

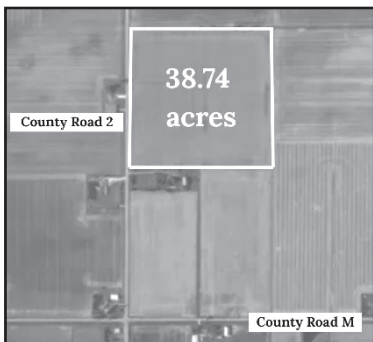
38.74+/- ACRES REAL ESTATE

FARMLAND AUCTION

THURSDAY, MARCH 5, 2026 @ 11AM

**Farm Located on County Road 2, Henry County
Just North of County Road M**

**Auction Held at Whalen Auction Bldg,
8020 Manore Rd, (Gps Grand Rapids OH, 43522)
Damascus Twp-Henry County-Napoleon Schools**



38.74+/- Acres of a Perfect square, well tiled, tiled 30' 5-6 years ago. Parcel #33-360006.0000. See whalenauction.com for more information.

Terms: Successful bidder requires \$15,000 non-refundable in certified funds on the day of the auction w/balance due at closing. Closing held on or before 45 days. Have finances ready, selling with immediate confirmation "as is where is". No Buyer's Premium. Possession upon receipt of down payments for farming purposes only. All information on this flyer was derived from sources believed to be correct but not guaranteed. Dimensions are approximate. Buyers need to rely entirely on their own judgement and inspections of property records. Announcements made on the day of the auction take precedence over printed materials.

Owners: David & Cynthia Kistner

WHALEN WHALEN
REALTY & AUCTION, LTD.

419-875-6317 419-337-7653

Auctioneers: John & Jason Whalen, Mike Murry

Information herein deemed reliable but not guaranteed