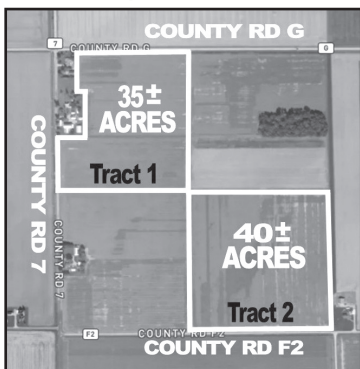


**75.997 ACRES REAL ESTATE  
FARMLAND AUCTION  
WEDNESDAY FEBRUARY 25, 2026 @ 11AM  
Farms Located on Co. Rd. G & F2, Hamler OH**

**Auction Held at Hamler American Legion  
350 Randolph, Hamler, OH 43524**



**Farms offered Multi Parcel Method  
Bartlow Twp-Henry County-Patrick Henry Schools**

**Hoytville Silty Clay Loam Soil and selling with new survey.  
See [whalenauction.com](http://whalenauction.com) for more information.**

-----  
**Tract #1- 35.199 Acres, located on County Road 7, with frontage on County Road G, parcel #39-060012.0100, Taxes \$1,679.58/yr.. Tract #2- 40.798 Acres, County Road F2, parcel #39-060016.0000, Taxes \$1,848.56yr.**

**Terms:** Successful bidder requires \$9,000 down on each tract, non-refundable in certified funds on the day of the auction w/balance due at closing. Closing held on or before 45 days. Have finances ready, selling with immediate confirmation "as is where is". No Buyer's Premium. Possession upon receipt of down payment for farming purposes. All information on this flyer was derived from sources believed to be correct but not guaranteed. Dimensions are approximate. Buyers need to rely entirely on their own judgement and inspections of property records. Announcements made the day of the auction take precedence over printed materials.

**Owners:** Daris Honemann Trustee  
Kevin Sonnenberg- POA for Carol Sonnenberg Trustee

**WHALEN WHALEN  
REALTY & AUCTION, LTD.**

**419-875-6317 419-337-7653**

**Auctioneers: John & Jason Whalen, Mike Murry  
Information herein deemed reliable but not guaranteed**