



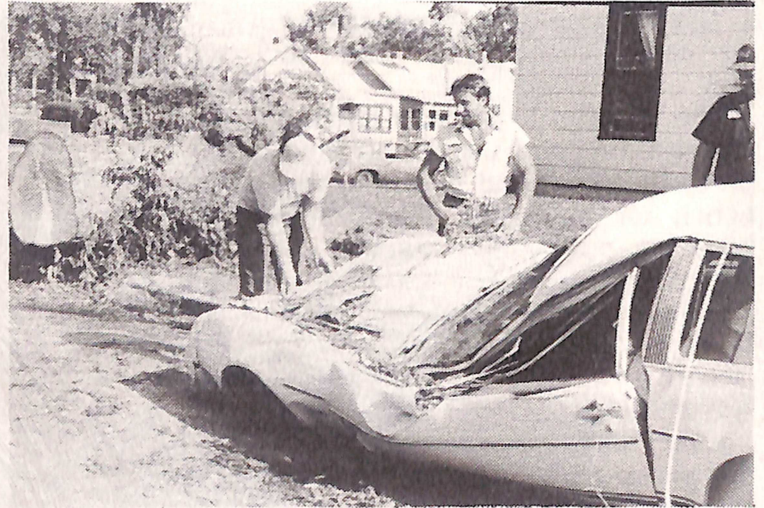
A bicycle rests in the rubble of the Nusser home, 2318 Ave. K, Friday evening moments after the storm hit. — Photo by Dan Koenig.



The Ginn Oil Co. station on Abbot Drive in nearby Carter Lake sustained major sign damage during the tornadoes and severe thunderstorms that hit the Omaha-Council Bluffs metropolitan area on July 15. Winds clocked at nearly 100 mph at nearby Eppler Airfield damaged or destroyed business signs throughout the area. — Photo by John Leu.



The comode in the Nusser residence at 2318 Ave. K remained bolted to the floor throughout the storm. — Photo by Steve Glowacki.



This car wasn't going anywhere. It was found parked after the storm near Ninth Street and Avenue D. Roger Boner checks to see if the hood will open. Jim Olsen, middle, and Dennis Haven joined him in checking the car out. All three are Council Bluffs Public Works employees. — Photo by Kevin McAndrews.



A Cadillac rests damaged under a carport located in the north 800 block of 25th Street, one of the hardest hit areas. — Photo by Kevin McAndrews.



One of the many cars to have trees fall on them was this one parked in front of 1825 Ave. F. — Photo by Steve Glowacki.