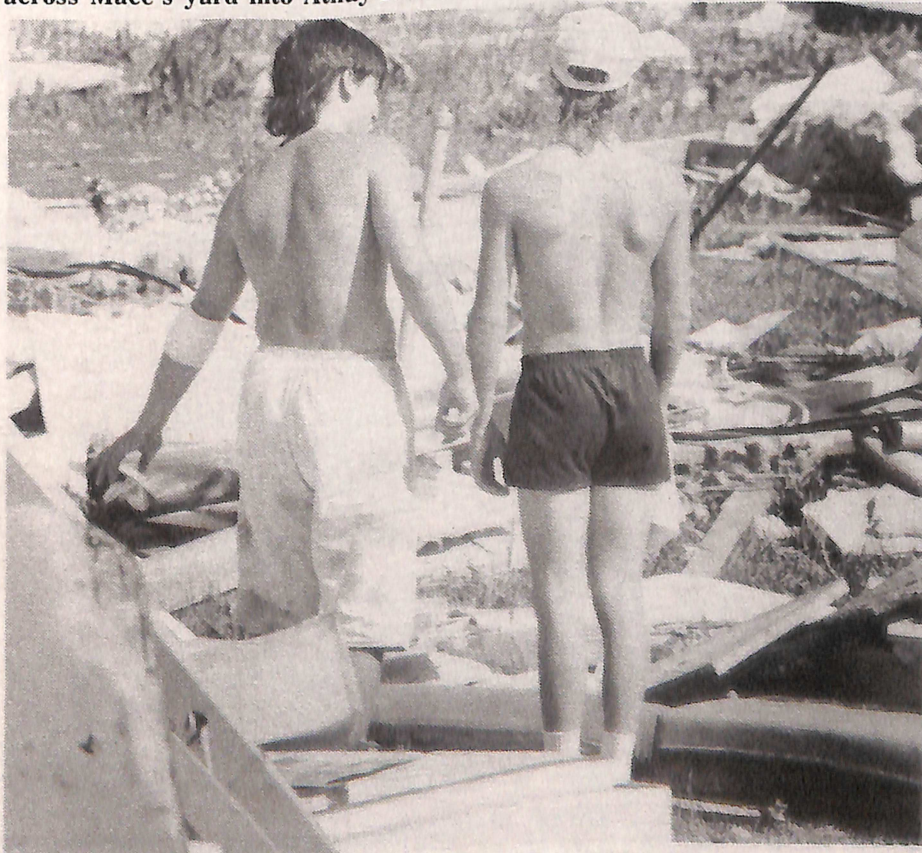




Don Mace, 1502 N. 22nd St., left, and his neighbor, Jim Athay, 1510 N. 22nd St., are dwarfed by the root system of an uprooted tree that fell across Mace's yard into Athay's. The

two took a refreshment break from their cleanup activities which would stretch into the following week. — Photo by Joe Arterburn.



Bobby Nusser walks with an unidentified friend through the rubble of his parent's home at 2318 Ave. K Saturday afternoon. — Photo by Dan Koenig.