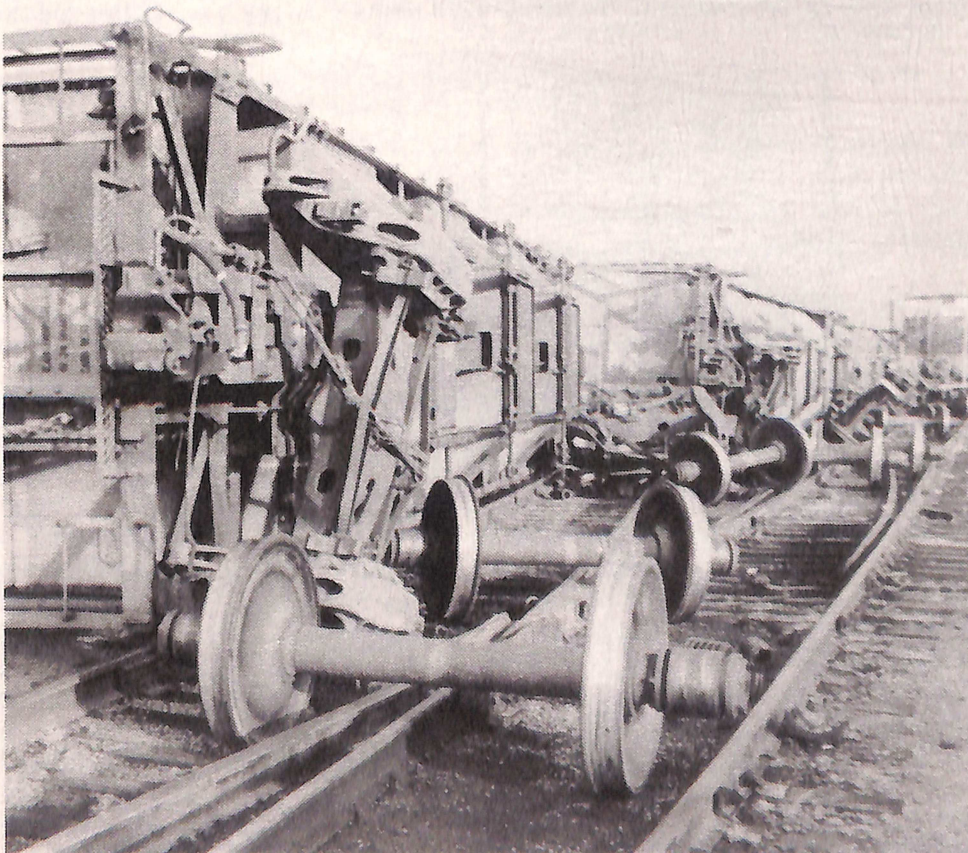




Richard Mowery, 829 Ave. M, looks at the damage done to his kitchen and the tree limb that fell into his house. His family, wife Claudia, and daughter Crystal, 5, were in the basement when the tornado hit. The couple's son Clinton, 7, was across

the street at his grandparents' home when the damage occurred. Their home never lost its electricity. Photo by Steve Glowacki.



Railroad cars were tossed over like so many model trains in the Union and Pacific Railroad yard in Council Bluffs. Photo by Steve Glowacki.

for reporters who flocked to the city.

Acting on the proclamation, Federal Emergency Management Agency teams began assessing the damage. President Reagan, acting on the FEMA assessments, followed with his own disaster declaration, opening the gate for federal assistance.

Curfews became the order of the night and the ravaged area was cordoned off, slowing but not stopping the flow of on-lookers — called "rubbernecks" and "gawkers" by the sweating workers.

Help poured in.

Cleanup crews came from Omaha with Sewer Maintenance Division trucks and front-end loaders. County road crews were ordered to converge on the city to clear streets. County conservation officers came with chainsaws. Ambulances and firefighters from outlying towns pulled in and cities, many far

(Continued)