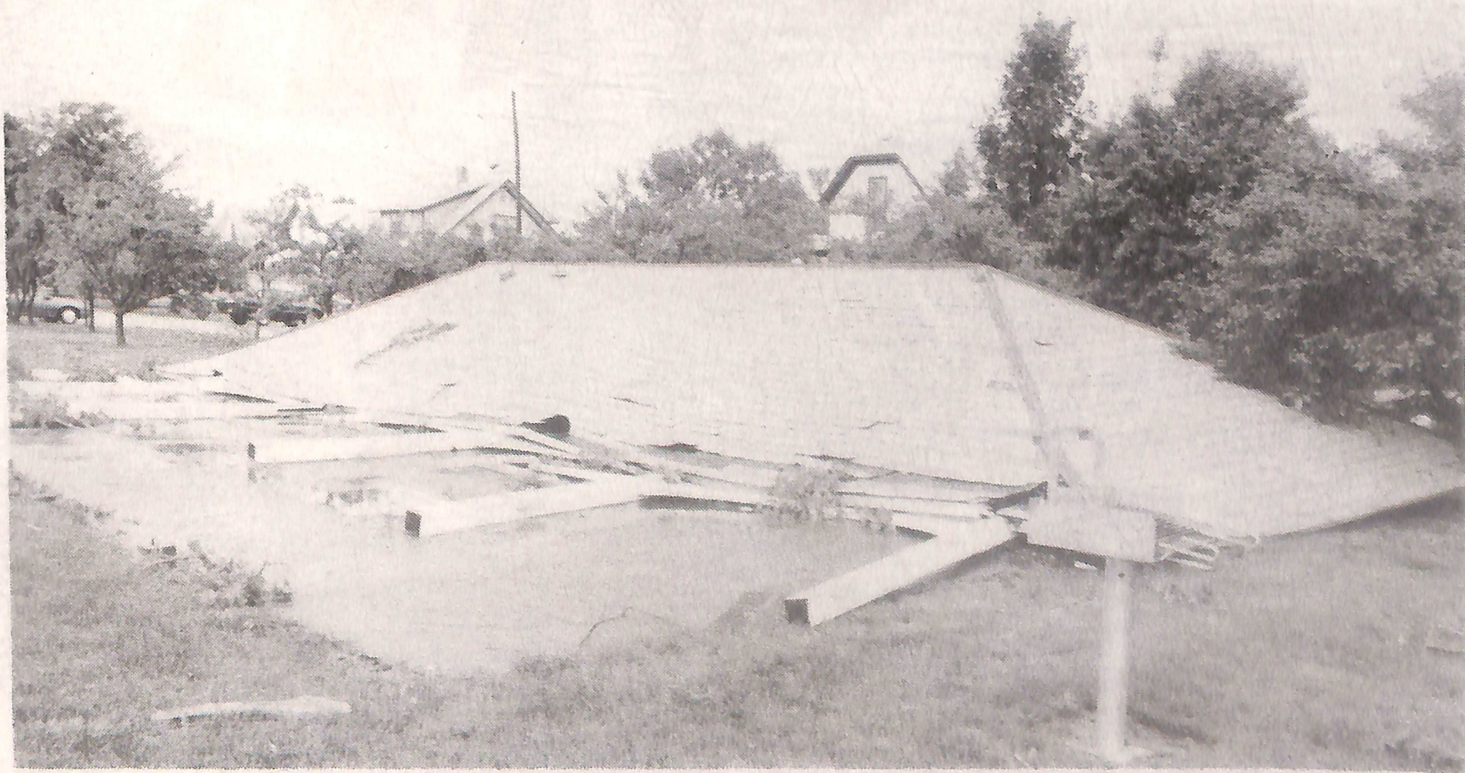




A continuous flow of trucks hauled broken branches, limbs and tree trunks to a hastily-opened tree dump north of Council Bluffs. By Monday, three days after the storm, the tree pile dwarfed bulldozers pushing the rubble dumped brought out by the truck, pickup and trailer load. But

officials estimated at this point only 20 percent of the downed trees and limbed had been removed. As many as 30 percent of the stricken 300-square block area's trees were estimated lost to the storm. — Photo by Joe Arterburn.



This open-sided picnic pavilion on the campus of Children's Square USA on North 7th Street in Council Bluffs was

knocked over. Luckily, no one was using it at the time. — Photo by Steve Glowacki.