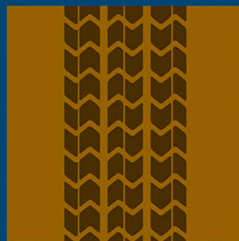


# Maximum land use required for solar in 2050 compared with other U.S. areas



Agriculture  
43% of contiguous U.S. surface area



Disturbed  
areas suitable  
for solar  
8%



Urban areas  
and paved  
roadways  
5%



Surface  
area of  
Great Lakes  
3%

Surface area required  
for solar development  
by 2050: ~0.05% of  
U.S. surface area



Contaminated land  
suitable for solar  
0.4%

Yellowstone  
National Park  
0.1%

Golf courses  
0.1%

Retail space  
0.0001%