

August 10, 2017

THE ESTATES OF *New Jersey*

Hidden Pond Farm
Delano & Aldrich, Georgian-style Colonial

*For further information contact the
Mendham Office of Turpin Real Estate at 973-543-7400*



NEW JERSEY HILLS MEDIA GROUP

www.newjerseyhills.com

www.newjerseyhills.com



COVER STORY



“HIDDEN POND FARM”

Delano & Aldrich, Georgian-style Colonial

HARDING TOWNSHIP, NEW JERSEY

Historicism, harmony, and grandeur delineate this pristine Georgian style Colonial set on over forty-three acres of idyllic farm-assessed property. The seemingly boundless grounds of rolling greenery that buttress the residence create a bucolic sanctuary that exudes tranquility and preserves the initial intentions for the home’s

inception. Built over a six-year period beginning in 1927 for Thomas M. Debevoise, the estate was intended as a haven for summer solitude away from the demands of his position as personal counsel to John D. Rockefeller Jr. Discerning eyes may recognize its stately lines and regal design as the work of renowned early twentieth century architects,

Delano and Aldrich. While a symmetrical blueprint pays homage to classical European architecture, today the home also strikes another chord—one of modernity and sophistication. Impeccably renovated and cared for by its current owners, the 24-room home boasts state-of-the-art amenities and modern conveniences, all while remaining true

to the manor’s inherent elegance.

Climbing hydrangea, roses, and wisteria garnish the brick façade, gracefully manicured to frame windows and doors. Windows are topped with lintels and bordered by broad, paneled shutters, while a rounded pediment with dentil molding and decorative pilasters

cont. on page 4

• WHAT’S INSIDE •

Hidden Pond Farm, Georgian-Style Colonial	2
Bucks County Charm	6
Coldwell Baker Global Luxury	7
Georgian Manor Aristocratic Grandeur	8
Two River Frontage Homes.....	10
Prime Land Opportunity at Skyview Estates.....	11

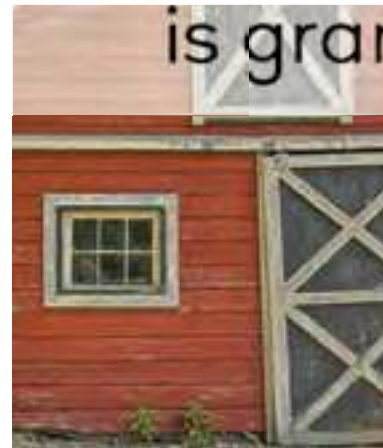
ESTATES OF NEW JERSEY

is published by New Jersey Hills Media Group
17-19 Morristown Road, Bernardsville, NJ 07924.

PUBLISHERS

Elizabeth K. Parker and Stephen W. Parker

Business Manager	Stephen W. Parker	Executive Editor	Elizabeth K. Parker
V.P. Sales and Marketing	Jerry O'Donnell	Assistant Executive Editor	Philip J. Nardone
Advertising Executive	George Shields	Advertising Designers	Toni Codd
	908-766-3900 x256		Sally Harris



life

here

is grand

At Turpin, we're as passionate about the communities we serve
as we are about the homes we sell.

877-788-7746



www.TurpinRealtors.com

EQUAL HOUSING OPPORTUNITY



Elegant 10,000 square foot home in Mendham Borough

Welcome home to this fifteen room Tuscan inspired estate nestled within the rolling hills and carefully preserved serenity of Mendham. Built in 2005 with quality custom finishes including coffered ceilings, extensive custom millwork, hardwood floors with inlaid details, floor to ceiling windows, French doors to multiple patios and decks. There is an open, natural flow from the grand marble foyer through the three levels of sophisticated living space accessible with a three-stop elevator.

The main floor provides an elegant setting with a formal living room open to an adjacent conservatory, a study, formal dining room with wet bar and butler's pantry. The well-appointed gourmet kitchen boasts beautiful custom Cabinets, a Viking stove, double ovens, two dishwashers, center island, flanked by a breakfast nook and an octagonal hearth room with ceiling to floor windows and access to a flagstone deck. A family room with fireplace, in-law/guest space with large bedroom, full bath and patio, laundry room and mudroom complete this level.

Tree top views and restful spaces can be enjoyed on the upper level. The expansive master suite is comprised of a sitting room, coffee nook, luxury bath, custom closets and Juliet balcony. Within the turret; a suite complete with a sitting room and private sundeck is sure to delight your guests. Uniting these spaces are two additional bedrooms with en suite baths and walk-in closets, oversized linen closets as well as laundry room and bonus room.

In the lower level, enjoy resort style entertaining with a 2000-bottle wine cellar, a family room with a stone fireplace that flows seamlessly to a complete wet bar, billiards area and cabana room with full bath. French doors accessing the stone patio area lead to an infinity pool with waterfall and Jacuzzi, Pergola with fully equipped stainless steel outdoor kitchen and a built-in fire pit surrounded by lush perennial gardens.

Just thirty five minutes to New York City, this home is conveniently located to shops, schools, dining and services.

Offered by Gloria Nilson & Co. Real Estate
Please contact Carol or Stephanie
to arrange a private showing.

Gloria
NILSON & co
REAL ESTATE
A Berkshire Hathaway Affiliate



Carol Mucerino
Broker/Sales Associate
732-735-4758



Stephanie Glickman
Sales Associate
973-879-0406



Mendham / Bernardsville Regional Office
21 East Main Street • Mendham, NJ 07945
973-543-1000 glorianilson.com



cont. from page 2

ornaments the front door. Once inside, a redolence of fresh lilac and other blossoms clipped from the property's magnificent Peony Pathway welcomes you into a marble-floored rotunda that opens into a grand foyer. A sweeping staircase and intricate shell and coral cornicing hint at the grandeur that awaits. The entryway gives way to a dining room, formal living room, garden room, and library that feature an array of striking elements such as eleven foot ceilings, eighteen inch poured concrete walls adorned with custom hand-painted wallpapers and textured fabrics, marble and limestone flooring, and ornate plaster crown moldings. French doors in the main rooms open onto a bluestone terrace that runs from the rich walnut-paneled library to the gourmet kitchen at the other end of the grand home. Chinese Gracie wallpaper, custom-painted in muted tones, re-

fines the dining room. An antique chandelier and carved mantel—one of ten working fireplaces in the home—also bedeck the space which flows seamlessly into a stunning breakfast room and overlooks the flawless grounds through three sets of French doors.

Take in the pastoral scenes of horse clad meadows that grace the walls as you pass through to the well-appointed butler's pantry, complete with a Subzero refrigerator, two warming drawers, and custom wood flooring stained in intricate geometrics. A kitchen fit for a gastronome features custom cabinetry by Smallbone of Devizes, Carrera marble counter-tops, Traulsen and Gaggenau appliances, and a floor garbed in reclaimed tiles brought in from France. Natural light floods the space through arched window work, and the kitchen dining area spills out onto the expansive

multi-tiered bluestone terrace through French doors. A handsome family room offers another staircase to the second floor and a mudroom offers additional organized storage space. The main floor is completed with two powder rooms and a flower room currently used as an office with its own private entrance.

Ascend one of the three staircases to the second floor which hosts a sewing room, a wrapping room with built-in cabinetry, and eight bedrooms—six of which feature en suite bathrooms. The master suite is a true retreat replete with soothing hues, fireplace with wood mantel and etched floral design, private balcony overlooking the perennial gardens and gracious inground pool, and a serene marble-tiled master bath with radiant heated floors, a multi-spray steam shower and soaking tub. An octagonal sitting room in soft blush, complete with yet another

fireplace, augments the space.

The home also features an impressive exercise room and walk-in cedar closet on the third floor, and a generous recreation room and 3,000 bottle temperature-controlled wine cellar on the lower level. The estate's grounds offer more still with a pumpkin patch, gardens outlined with stone walls, and various outbuildings.

Set in pastoral Harding Township, just 30 miles from Manhattan with Midtown Direct trains to Penn Station, New York, this home's locale is both prime and tucked away. Abound with both character and refinement, Hidden Pond Farm captures the essence of elegant living while offering a timelessness that's unmatched.

For more information, contact the Turpin Real Estate Office in Mendham 973-543-7400.



COLDWELL BANKER

RESIDENTIAL BROKERAGE



MENDHAM, NJ | \$4,495,000 *GLOBAL LUXURY PROPERTY*
This magnificent Estate home on ~10 ac offers 7BR, 8.2BA, pool, pool house, apt w/private entry & restored 1908 chapel. MLS 3398231
Nan Reil | C. 908.672.5076 & Vincenza Montrone | C. 908.305.2160 | Sales Associates



BASKING RIDGE, NJ | \$2,950,000
Allow yourself perfection! Classic elegance in estate neighborhood. 1st & 2nd level master suites. Finished lower level. MLS 3364473
Jane Devine | Sales Associate | C. 908.581.4694



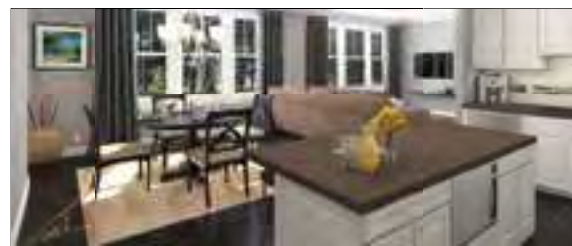
WARREN, NJ | \$1,999,000
Custom homes by CRC Communities. 10' ceilings on the 1st flr, 8' interior doors, gourmet kit, detailed moldings, 4 car gar. MLS 3354402
Nan Reil | C. 908.672.5076 & Vincenza Montrone | C. 908.305.2160 | Sales Associates



FAR HILLS, NJ | \$1,995,000
New Construction! Stately 5BR Col features both Classic & Transitional styling, making it an ideal home for a 21st Century lifestyle. MLS 3399449
Gale Sauchelli | Broker Sales Associate | C. 908.672.8931



BASKING RIDGE, NJ | \$1,499,000
The town, neighborhood and home you hoped to find. Bucks County col, 5 BR, solarium, library, walk-out fin lower level. MLS 3341601
Jane Devine | Sales Associate | C. 908.581.4694



BERNARDSVILLE, NJ | From \$729,900
Luxury 1 level, 2BR, 2.1BA residences close to shopping, dining & trains to NYC, in one of the most desired towns. MLS 3336232
Donald Philhower | Broker Sales Associate | C. 908.295.3201

COLDWELL BANKER RESIDENTIAL BROKERAGE | 39 OLCOTT SQUARE, BERNARDSVILLE, NJ 07924 | 908.766.2900

© 2017 Coldwell Banker Residential Brokerage. All Rights Reserved. Coldwell Banker Residential Brokerage fully supports the principles of the Fair Housing Act and the Equal Opportunity Act. Operated by a subsidiary of NRT LLC. Coldwell Banker® and the Coldwell Banker logo are registered service marks owned by Coldwell Banker Real Estate LLC. Real estate agents affiliated with Coldwell Banker Residential Brokerage are independent contractor sales associates and are not employees of Coldwell Banker Residential Brokerage.



GLOBAL LUXURY

WHERE EXCELLENCE LIVES



MENDHAM, NEW JERSEY | \$1,850,000
English Country 5 BR/6.2 bath Manor on 5.2 pvt acs. French doors open to an extravagant pool area & enchanting gardens. All BRs have ensuite baths & walk in closets. Lower Level offers wine cellar & more. MLS#3364296
Tawnya Kabnick C. 973.723.5700



MENDHAM, NEW JERSEY | \$2,350,000
Beautiful views! 6 bedroom/4.5 bath estate on 8 private acres with panoramic countryside views. Luxurious spaces, custom millwork & superior craftsmanship throughout. MLS#3382897
Flor de Maria Thomas C. 973.214.7553



MENDHAM TOWNSHIP, NEW JERSEY | \$2,495,000
Elegant formal events, poolside parties or fireplace gatherings, this pristine 6 BR/ 5.1bth New England Colonial is the perfect home. Details include full run HW flrs, period moldings & Cushwa brick. 5 acs on cul-de-sac. MLS#3341033
Kristin Gobbel-Swanson C. 973.229.7832 | Sally Mulcahy C. 201.787.4713



MENDHAM TOWNSHIP, NEW JERSEY | \$2,065,000
Stunning 6 bedroom, 7.2 bath manor on 4 sweeping acres. Library with fireplace, first floor au pair suite, master suite and gourmet cook's kitchen. Three full floors of flexible living to meet your everyday lifestyle. MLS#3399240
Pamela "Pam" Tishman C. 973.271.9079 | Pauline Derrick C. 973.723.4760



MENDHAM, NEW JERSEY | \$2,100,000
A personal oasis with gracious English style gardens, serene patios & pool. 5 BR/ 5.2 bth estate with Chef's kit, gracious family room and master suite with balcony. In-town living with country estate charm and privacy. MLS#3375027
Flor de Maria Thomas C. 973.214.7553



BEDMINSTER TOWNSHIP, NEW JERSEY | \$4,498,000
A lovely upscale ambiance comes with this luxurious 5BR/5+BA residence. Extraordinary home that is rich yet restrained. Space galore. 7 fireplaces. An elegant setting and so much more! MLS#3375538
Kristin Gobbel-Swanson C. 973.229.7832 | Sally Mulcahy C. 201.787.4713

COLDWELLBANKERLUXURY.COM

COLDWELL BANKER RESIDENTIAL BROKERAGE | 106 A EAST MAIN ST, MENDHAM NJ 07945 | 973.543.2552

The property information herein is derived from various sources that may include, but not be limited to, county records and the Multiple Listing Service, and it may include approximations. Although the information is believed to be accurate, it is not warranted and you should not rely upon it without personal verification. ©2017 Coldwell Banker Residential Brokerage. All Rights Reserved. Coldwell Banker Residential Brokerage fully supports the principles of the Fair Housing Act and the Equal Opportunity Act. Operated by a subsidiary of NRT LLC. Coldwell Banker, the Coldwell Banker Logo, Coldwell Banker Global Luxury and the Coldwell Banker Global Luxury logo are service marks registered or pending registration owned by Coldwell Banker Real Estate LLC. Real estate agents affiliated with Coldwell Banker Residential Brokerage are independent contractor sales associates and are not employees of Coldwell Banker Residential Brokerage.



**3 ROYAL OAK
BASKING RIDGE, NEW JERSEY**

BUCKS COUNTY CHARM *Meets 21st Century Sophistication*

A neighborhood of distinctive, estate homes provides the setting for this award-winning design by luxury builder Bocina Homes. Heralding the pastoral romance of 18th century Bucks County are the exterior's authentic Pennsylvania fieldstone, classically elegant trim and custom wood shutters. The columned portico with balustrade, soaring gable inset with Palladium window, long horizontal lines, and tier of covered porches, bestow a decided stateliness. Three acres of park-like grounds on a cul-de-sac provide the stage for this superb fifteen-room residence.

Architectural highlights of the three-level interior include Bocina's signature custom millwork, four-inch stained-oak flooring, high ceilings selectively including tray and coffered detailing. The Andersen divided-light windows are tinted for sun protection. And the carved-panel, solid core seven-foot doors are complemented with Emtek oil-rubbed hardware and decorative plates.

The two-story foyer introduces this builder's generous affinity for multilayered crown molding and

formal entrances trimmed with fluted casings and prominent detailed headers. The oak floor is inset with tumbled marble and the flared, oak staircase sports custom balusters.

Spacious rooms are beautifully scaled allowing for large gatherings as readily as the daily intimacy of family and friends. Get-togethers flow freely from the family room with coffered ceiling, fieldstone fireplace and wall of arched transom-covered French doors to the sizeable kitchen where the breakfast area is a panorama of light-filled windows. Step from this alluring space to the bluestone terrace framed with stone walls and the verdant grounds beyond.

The living room hosts yet another fireplace and a cherry wet bar with appliances. An octagonal tray ceiling crowns the dining room and the diagonally-installed oak floor is framed with a double border of walnut. Enjoy quiet moments in the glass-walled sun room or the covered porch. And taking care of business is a pleasure in the pine-paneled library with built-in bookcases and computer-ready desk.

On the second level, the master suite comes dressed in architectural drama including the bedroom with tray ceiling, enviable walk-in closets and a sitting room with access to the columned covered porch. The luxurious bath features marble countertops and heated floor, glazed custom cabinetry, tray ceiling, an arched window over the jetted tub, walk-in closet, large neo-angle shower, a full bath within this bath, and so much more. Further along are five additional bedrooms, three baths and a leisure room.

Wonderfully adding to this home's size and enjoyment is the daylight-bright finished lower. The recreation room features a cherry built-in wet bar with multi-level granite counter and an array of accommodating appliances. The media area is fitted with surround sound, 100" HDTV, Runco projector and Rotel theater receiver. There is an exercise/playroom and an area ideal for a pool table. The full bath, with steam shower, brings the home's total to five full and two half baths.

Providing all-season comfort are four Trane furnaces and four central air conditioning systems

serving seven zones. Nest ther mostats support internet based control for both heating and cooling. The two 50-gallon hot water heaters are accompanied by a recirculation pump with timer and the public water system is supplemented with filtration and softening units. There is seven-camera security including DVR and internet accessibility and an advanced alarm system with multiple protective features.

"Built by Bocina." Homeowners say it proudly. Professionals acknowledge the excellence. An environment of beauty, warmth and tradition redesigned for contemporary living awaits.

This exceptional offering is presented for \$2,699,000 by Coldwell Banker Residential Brokerage, Bernardsville 908.766.2900. For additional information contact listing agent, Jane Devine at 908.581.4694.



THERE IS A NEW SIGN IN TOWN!

Welcome Coldwell Banker Global Luxury



GLOBAL
LUXURY™

WHERE EXCELLENCE LIVES



The Coldwell Banker Residential Brokerage office in Mendham is pleased to introduce the Coldwell Banker Global Luxury™ program, reflecting the interconnected world of luxury real estate. Coldwell Banker Global Luxury showcases luxury properties to an international network in 49 countries and territories and effectively retires the Coldwell Banker Previews International name.

As part of the introduction of Coldwell Banker Global Luxury, a new logo, signage and website have been unveiled. The new sleek look of the Coldwell Banker Global Luxury sign can currently be seen on eight properties offered for sale through the Coldwell Banker Residential Brokerage office in Mendham.

The new website, ColdwellBanker-GlobalLuxury.com, connects 750,000 luxury agents across multiple international brands and syndicated listings globally to real estate portals around the world. Multiple language translations and currency conversion tools allow international buyers to tailor their experience. The website is mobil-friendly with an accompanying app.

Coldwell Banker has been a leader in luxury real estate for more than 110 years, representing and selling stately castles, remote islands,

mansions and estates around the world. The launch of a fresh global marketing program reinforces Coldwell Banker Residential Brokerage's leadership in luxury and strengthens the company's presence in the luxury market.

Every day, Coldwell Banker affiliated sales associates handle approximately \$130 million in million-dollar plus home sales. In 2016, sales associates affiliated with Coldwell Banker represented home buyers and sellers in nearly 25,000 plus home sale transactions priced at \$1 million or more.

Locally, Coldwell Banker Residen-



tial Brokerage in New Jersey and Rockland County, N.Y. participated in 934 transaction sales of homes priced at \$1 million or more in 2016, surpassing \$1.3 billion in sales volume.

"This exceptional track record of success comes from having an exclusive program designed specifically for luxury properties. Coldwell Banker luxury specialists use this program to craft customized strategies for marketing luxury properties to affluent buyers worldwide," said Hal Maxwell, president of Coldwell Banker Residential Brokerage in New Jersey and Rockland County, N.Y.

In Mendham, the sales activity of luxury homes continues to grow as well. "The activity in the luxury market in the Mendham area

market with homes realistically priced and mortgage interest rates at historic lows."

There is also good news for luxury sellers. According to Otteau Group, Inc., in Morris County in June 2017, the month's supply of homes over \$2.5 million compared to June 2016 have dropped by half, reflecting the promising increase of sales of homes in this price point. Homes priced between \$1,000,001 and \$2,500,000 had an 8 months' supply in Morris County and a 10 months' supply in Somerset County in June 2017.

The absorption rate, or months' of supply, indicates how many months it would take to deplete the current inventory at the current rate of sales.

"With these numbers, the outlook is good for luxury home sellers in our market and I'm excited to utilize the Coldwell Banker Global Luxury program to help our clients achieve all of their real estate goals," continued Laughlin.

If you are thinking of selling or buying a luxury home, call a Global Luxury specialist at the Coldwell Banker Residential Brokerage office in Mendham at 973-543-2552.



**5 COBBLEFIELD DRIVE
MENDHAM, NEW JERSEY**

LANDED GEORGIAN MANOR RECALLS ARISTOCRATIC GRANDEUR

Drive by the intriguing natural beauty of Jockey Hollow Park to arrive at this exceptional Georgian inspiration. Gates glide open to verdant lawn, formal gardens and a paradise of privilege and privacy. Beautifully integrated into the picture-book landscape is the 7000-square foot home with additional fully finished lower level. Commonly associated with the reigns of England's King Georges I through III, Georgian style is admired for its symmetrical design, classic proportions and decorative elements.

Grand columns, the brick exterior, mahogany entry doors and divided-light windows affirm the home's pleasing architectural pedigree. Indoors, high ceilings, majestic pilasters, intricately detailed crown molding, hardwood floors and arched entries prevail. In the foyer the ceiling rises 20-feet above the marble flooring. The living room hosts the first of

the home's four fireplaces. The library sports cherry wood flooring, mahogany wainscoting and bookcase cabinetry. The gallery, defined with arched entries and fluted columns, delivers a fully orchestrated wet bar.

The family room continues the foyer's 20' ceiling and soaring pilasters. A sunburst transom crowns the French doors opening to the considerable kitchen stocked with top rated appliances. The breakfast area is a surround of windows allowing views to the deck, magnificent gardens and pool. The main level also includes a guest/nanny suite.

Upstairs, the master bedroom shares a two-sided fireplace with the sitting room, the bath is awash in marble and the walk-in closet enviably sized. Of the four additional bedrooms, all have walk-in closets and two are en suite.

Wonderfully expanding the home's living area, the finished lower level commences with a foyer and views to the charming arched entries of sizeable designated spaces. Among them are recreation, media, billiard, exercise and wine rooms. The 28' x 18' Great Room is defined with 5 arches and includes a raised hearth fireplace and full bar.

All season comfort and security is provided by five gas-fired furnaces and five unit high-efficiency 12 Seer air conditioning system. Also, two 75-gallon hot water heaters, cyclonic central vacuum, irrigation system and hardwired security alarm.

The residence also incorporates a four-car garage.

Complementing this home's premiere location is its immediate proximity to the Morristown National Historic Park including leg-

endary Jockey Hollow, the Cross Estate Gardens and the Scherman-Hoffman Wildlife Sanctuary. While each has its unique attractions, combined they offer hundreds of acres of hiking trails and scenic discovery while town centers, major highways and public transit to the urban world beyond are readily nearby.

This excellent property is listed by Kienlen Lattmann Sotheby's International Realty. For additional information, contact sales agent, Megan Bonanno at 862.812.0634. The property can also be viewed online at www.5Cobblefield.com

Kienlen Lattmann Sotheby's International Realty is an affiliate of Sotheby's International Realty LLC and is independently owned and operated.



Kienlen
Lattmann

Sotheby's
INTERNATIONAL REALTY



BERNARDSVILLE \$1,999,000
Visit 5CobblefieldDrive.com



BERNARDSVILLE \$5,400,000
Visit MountainTopManor.com



CHATHAM \$2,229,000
Visit 49WoodmontDrive.com



HARDING \$5,490,000
Visit 30CherryLane.com



Kienlen
Lattmann

Sotheby's
INTERNATIONAL REALTY

AT THIS MOMENT

ALL ROADS LED HOME
CHESTER, NJ 10:39 HOURS

Visit KonkusFarm.com \$3,300,000



HARDING \$2,499,000
Visit 25FoxHunt.com



HARDING \$3,675,000
Visit 2HollyHillLane.com



MENDHAM \$2,250,000
Visit FoxwoodFarmNJ.com



MORRIS TOWNSHIP \$2,850,000
Visit 21Normandy.com

klsir.com | sothebysrealty.com

© MMXVII Sotheby's International Realty Affiliates LLC. All Rights Reserved. Sotheby's International Realty and the Sotheby's International Realty logo are registered service marks used with permission. Sotheby's International Realty® is a registered trademark licensed to Sotheby's International Realty Affiliates LLC. An Equal Opportunity Company. Equal Housing Opportunity (EHO). Each Office is Independently Owned and Operated.

68 North Finley Avenue, Basking Ridge, NJ | 908.696.8600
454 Main Street, Bedminster, NJ | 908.719.2500
223 Main Street, Madison, NJ | 973.377.7785

TWO RIVER FRONTAGE HOMES ON 14+ ACRES

It's a tale of two houses in Hunterdon County's Franklin Township. Two spacious, inviting homes are set on over 14 acres of park-like property with frontage on the South Branch of the Raritan River. The newer home, an exquisite stone front custom residence built in 2004, offers five bedrooms and five-and-one-half baths. The second home is a 1765 stone Colonial with four bedrooms, three baths and a barn/two-car garage.

Bucolic, natural and privately-situated, this property is ideal for an investor since both homes are currently rented. Opportunities exist for a residential compound, riverfront vacation home or weekend getaway with close proximity to New York City and Philadelphia, equestrian property, or a multi-generational living arrangement. Sub-division possibilities are another option.

The land has an historic pedigree since it was once part of the Captain Jacob Gearhart farmstead; the original owner was a Revolutionary War patriot who secured boats for Washington's Crossing

and wintered at Valley Forge. Today, special features on the acreage include a half-mile jogging track, a professional children's playground, an exercise work-out training station, a pair of resident bald eagles who have nested and raised their young here for the past seven years, lush landscapes and serene river views. While it is sited on the South Branch, this property has not flooded during the 20 year ownership of the current property owners.

The first home offers a beautifully detailed 5,600 square-foot open floor plan with generously-sized rooms and modern appointments. Highlights include wood and tile flooring, beamed ceilings, large windows, recessed lighting, built-ins, three fireplaces, French doors, and neutral paint colors. Gracious gathering spaces invite entertaining and everyday living. There is a kitchen with granite and high-end stainless steel appliances, a beamed ceiling family room with seating and billiards areas, and a fireside media room. The fabulous master suite adjoins a spa-like master bath. This lux-

ury home is currently rented and there are two years remaining on the lease.

Carefully expanded and updated with wing additions that respect its Early American heritage, the historic second home presents a character-filled layout containing three fireplaces, beamed ceilings, wood floors, a country kitchen, living room with fireplace flanked by built-ins, a firelit study and a huge master bedroom with dressing and sitting areas. This circa 1765 home is also currently rented.

Sited on a lightly traveled road yet close to a network of local and interstate highways including Route 31 and Interstate 78, this river-facing property is convenient to many local amenities including major retail stores, shopping outlets, fine restaurants, recreational opportunities and cultural events.

Originally a Quaker settlement, Franklin Township in Hunterdon County was established in 1845 when it was part of Kingwood Township. Just outside the village

of Pittstown in the township is Sky Manor Airport where a range of activities from hot air ballooning to sky diving take place. Franklin Township is equally distant--about 60 miles--from either New York City or Philadelphia. NJ Transit provides rail service to Newark and Manhattan from nearby train stations in Lebanon, High Bridge and Clinton Township, while rail service to Philadelphia is available from Trenton in neighboring Mercer County.

This unique new listing is offered at \$1,350,000. Contact Weichert, Realtors sales agents Bob Beatty at 908-303-8606, Pamela Beatty at 908-246-3477, or the Clinton Office at 908-735-8140 for more information. Additional listing information and photos can be found at www.156RiverRoad.info.



PRIME LAND OPPORTUNITY AT SKYVIEW ESTATES

**FRANKLIN TOWNSHIP
NEW JERSEY**



Aspectacular land opportunity is available at Sky View Estates in Franklin Township, arguably one of the most picturesque remaining building sites in all of Hunterdon County. Situated at the end of a gated cul de sac, the 8.58-acre estate property offers panoramic views of Round Valley and Spruce Run Reservoirs as well as distant mountains, rolling farmland and countryside vistas spanning 30 miles in all directions.

Sky View Estates is the only gated, private home community in the county; it is a regal collection of multi-million dollar homes with views to match. Located less than five miles from Interstate 78 and historic downtown Clinton, a variety of local amenities are close by including shops, restaurants, historic sites, recreational opportunities and cultural venues.

Approached by a boulevard entrance featuring elegant stone pillars and black fencing, this secure enclave has a remote-

controlled gate for residential access. Comprised of just eight impressive home sites, the intimate community is surrounded by natural beauty. The farm-assessed acreage for sale is comprised of cleared land and mowed grass edged by woodlands on two sides, making it an ideal spot for a lavish dream home with dramatic views from every room.

Underground utilities serve all of the residences at Sky View Estates, and the private road, the gate, and common area maintenance are overseen by a Homeowner's Association.

Originally a Quaker settlement, Franklin Township in Hunterdon County was established in 1845 when it was part of Kingwood Township. Just outside the village of Pittstown in the township is Sky Manor Airport where a range of activities from hot air ballooning to sky diving take place. Franklin Township is equally distant-about 60 miles-- from either New York City or Philadelphia. NJ Transit provides rail service

to Newark and Manhattan from nearby train stations in Lebanon, High Bridge and Clinton Township, while rail service to Philadelphia is available from Trenton in neighboring Mercer County.

This Sky View Estates property is offered subject to deed restrictions and architectural review. Due to its gated location, an appointment is required to view the home site. Truly a marvelous land offering in a coveted location, it is listed at \$850,000. Contact Weichert, Realtors sales agents Bob Beatty at 908-303-8606, Pamela Beatty at 908-246-3477, or the Clinton Office at 908-735-8140 for more information. Additional listing information and photos can be found at www.15TwinsCourt.info.

James Weichert, President and Founder of Weichert, Realtors, praised Bob and Pamela Beatty, a husband-and-wife sales team whose market area covers Hunterdon, Somerset, Warren and

Morris Counties. "Bob and Pam Beatty are two hard-working and dedicated agents who have stood the test of time and proven that they can be successful in any real estate market," said Weichert. "The Beattys are true professionals who have gained the trust of their clients and the respect of their colleagues and peers over the years." He stressed the importance of using experienced real estate sales professionals when buying or selling a home. "Regardless of market conditions, you can always rely on Bob and Pam's outstanding judgment and their commitment to meeting their customers' expectations and needs," added Weichert.

For more information, Weichert's customer service center can be reached at 1-800-USA-SOLD or at Weichert's Web site, www.weichert.com.



Weichert Realtors

*Two Large 4+ BR Homes With A Great Location
And An Incredible 14-Acre Park-Like Setting!*

Location! Location! Location!



Franklin, Hunterdon:

Two large and exquisitely complete separate homes with a GREAT location in a gorgeous and truly park-like setting on a spectacular 14.04 acre lot with river frontage on an exceptionally pretty and lightly traveled country road. The incredible one-of-a-kind setting also features a 1/2 mile jogging track, and for the past seven years, a pair of nesting bald eagles! The first house is a 5600 sq ft 5BR & 5-1/2 bath custom two-story home which was built in

2004. It is completely outfitted with high-end upgraded appliances, and features enormous room sizes including a 24x20 granite & stainless steel Kitchen, a 35x17 Family Room, a 35x23 Living Room, and a 36x24 Master Bedroom. The second home is a 4BR 3 bath updated & expanded 1765 stone colonial, with three fireplaces, and a detached barn/garage. Both have river views, and are currently rented. The owners have lived on site since 1994, and the property has not flooded in that time. 008-035964

**More Photos At www.156RiverRoad.Info
BUY IT NOW FOR ONLY \$1,350,000**

*Extraordinary Custom Quality & A Light, Bright,
& Airy Open Floor Plan On 3.6 Wooded Acres*

A Private End-Of-The-Road Location!



Tewksbury Twp:

A truly extraordinary custom built builder's home on a 3.64 acre landscaped wooded lot with a great location, totally secluded at the far end of a long private road. This superbly constructed home features a great Open Floor plan with a Gourmet Chef's Center Isle Granite Kitchen with maple cabinetry and upgraded appliances, and a spectacular, exceptionally-detailed 35x20 Great Room with a 12 ft high geometrically-patterned coffered ceiling.

Other highlights of this bright, sunny, and airy home include an 18x15 coffered ceiling Dining Room with a large adjacent butlers pantry, a 27x22 Living Room with a second stone fireplace, a high-ceilinged Piano Room, an expansive cathedral ceiling MBR Suite with two enormous walk-in closets, a private office suite with half-bath, an additional two-car detached garage with loft, and a two-bedroom lower level suite with its own Living Rm, full bath, & separate entrance. 008-035755

**More Photos At www.4StoneyRidgeLane.Info
BUY IT NOW FOR ONLY \$775,000**

*Spectacular End-Of-Cul-De-Sac Views From
Hunterdon's Only Private Gated Community!*

Franklin Twp in Hunterdon County:

Arguably the most spectacular remaining individual building site in all of Hunterdon County, this premier 8.58 acre end-of-cul-de-sac lot features dramatic 180-degree unobstructed panoramic views of both Round Valley and Spruce Run Reservoirs as well as 30 miles beyond. This truly amazing home site also features an equally spectacular location on a private road within Skyview Estates, the county's only private gated home community of multi-million dollar homes with a great location less than 5 miles from Rt 78 & the picturesque town of Clinton. This extraordinary building site is offered for sale subject to community deed restrictions and architectural review of proposed homes, and because of its gated location, will require an appointment to see. 008-036005

A Truly Amazing Building Site!



**More Photos At www.15TwinsCourt.Info
BUY IT NOW FOR ONLY \$850,000**

*A Spectacular 5,000 Sq. Ft. Home & Saltwater Pool
On 4.51 Acres Backing Up To Preserved Acreage*

Raritan Twp:

A truly magnificent 5000 sq ft brick-front Williamsburg Colonial complete with a 20x40 free-form in-ground saltwater pool, all on a gorgeously landscaped 4.51 acre wooded lot with a great Milestone Manor location and a completely private backyard which backs up to 40 acres of preserved acreage for additional privacy. The 4BR & 5-1/2 bath beauty features an enormous 24x15 granite & cherry Center Isle Kitchen with upgraded appliances and a huge 26x16 two-story Family Room with a floor-to-ceiling stone fireplace. Other highlights include a private Library with a fireplace and built-ins, an exquisitely detailed 19x15 Dining Room, an expansive MBR Suite with a Sitting Room & two large walk-ins, spacious secondary bedrooms, a back staircase which leads to two additional Bonus Rooms, a paved circular drive, a large full-length deck, and a finished daylight walk-out basement with a 30x15 Rec Rm, an Exercise Rm, an office, a full bath, and an accessory kitchen. 008-035717

A Truly Resort-like Backyard!



**More Photos At www.7KnollwoodCourt.Info
BUY IT NOW FOR ONLY \$799,900!**

Ask for Robert (Bob) Beatty 908-735-8140, ext. 2683 • Eves/Cell: 908-303-8606

Email: bob@bobbbeatty.net; Website: www.BobBeatty.net



**#1 TOTAL REVENUE UNITS, Clinton Office - 2016
#1 SOLD LISTINGS, Clinton Office - 2016
#1 HIGHEST NUMBER OF SALES, Clinton Office - 2016
#1 DOLLAR VOLUME - \$28.2 Million - 2016**

**Clinton Office
9 W. Main Street, Clinton, NJ**

908-735-8140



**33 Years Experience in Real Estate
NJAR "Circle of Excellence" PLATINUM Level 2004-2015
Weichert Realtors President's Club or Weichert
Chairman-Of-The-Board Club 1995-2015**

*The Weichert "Family of Companies" dollar volume includes the total of combined sales & marketed listings, mortgages, insurance, title insurance & home warranties.

