



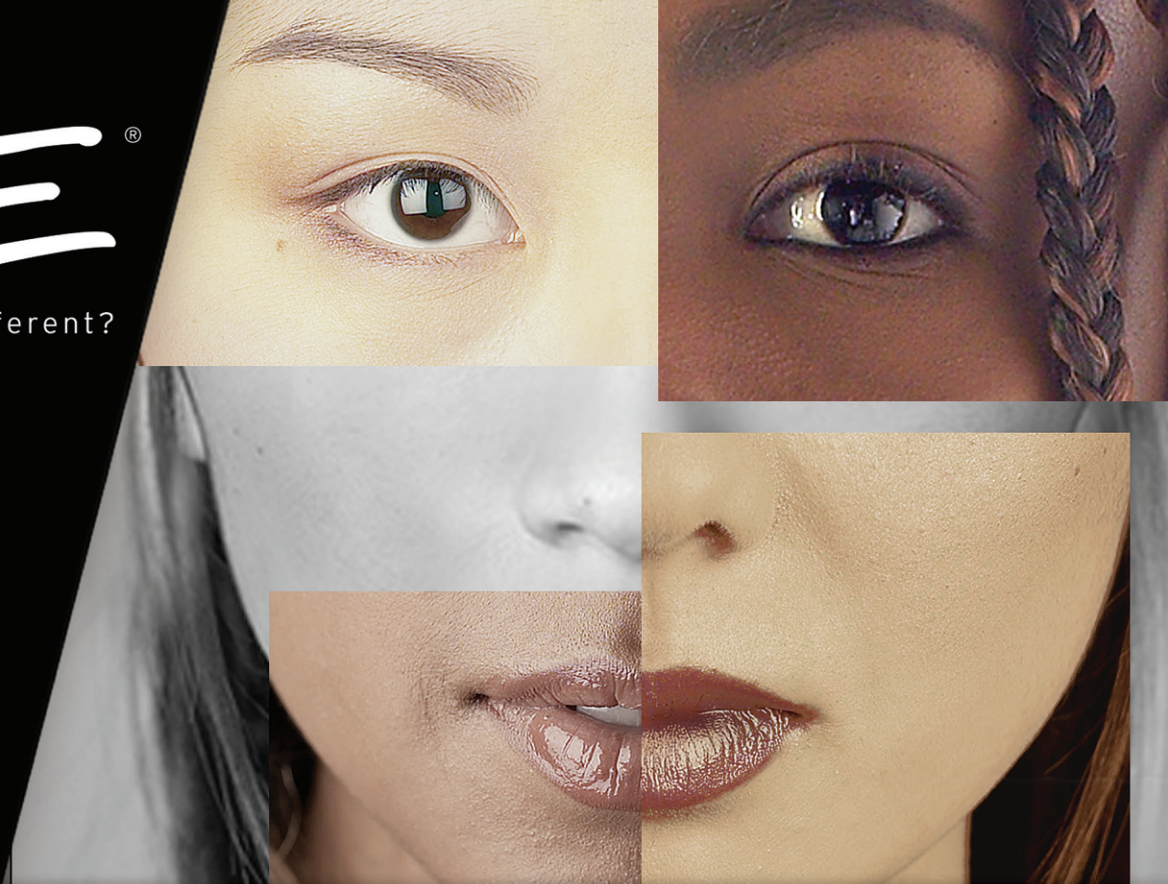
# RACE<sup>®</sup>

Are We So Different?

## EXHIBIT NOW OPEN!

### PUTNAM!

[www.putnam.org/RACE](http://www.putnam.org/RACE)



## You'll never see race the same way again.

- **Explore how views of human variation developed in our country** and what that means in your own life.
- **Learn the history of race**, with emphasis on the role of science in shaping what we think race is.
- **Understand the contemporary experience of race** in the United States, and the often-invisible ways race and racism have infiltrated laws, customs and institutions.

**Open 7 days a week!** Monday-Saturday: 10 a.m. - 5 p.m. / Sunday: Noon - 5 p.m.  
**Included with admission** • \$9 Adults; \$8 Youth/Senior/Student/Military; FREE Members

## Book your group's Discussion Circle!

Use the Putnam's new exhibit as a springboard for conversation within your business or small group!

[www.putnam.org/race](http://www.putnam.org/race)

