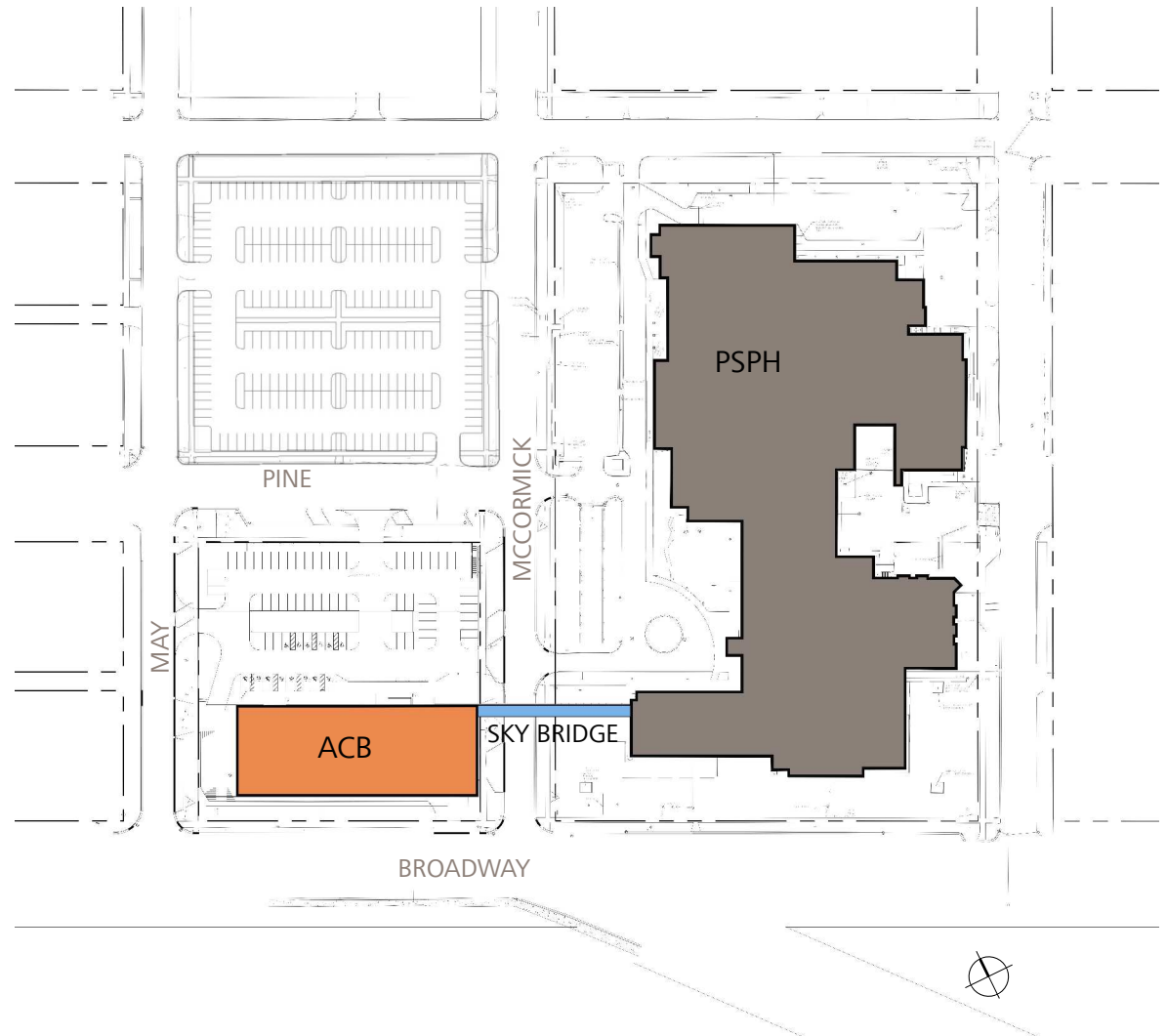


PROVIDENCE ST. PATRICK HOSPITAL - AMBULATORY CARE BUILDING

Site Plan



PROVIDENCE ST. PATRICK HOSPITAL - AMBULATORY CARE BUILDING

Aerial Perspective



PROVIDENCE ST. PATRICK HOSPITAL - AMBULATORY CARE BUILDING

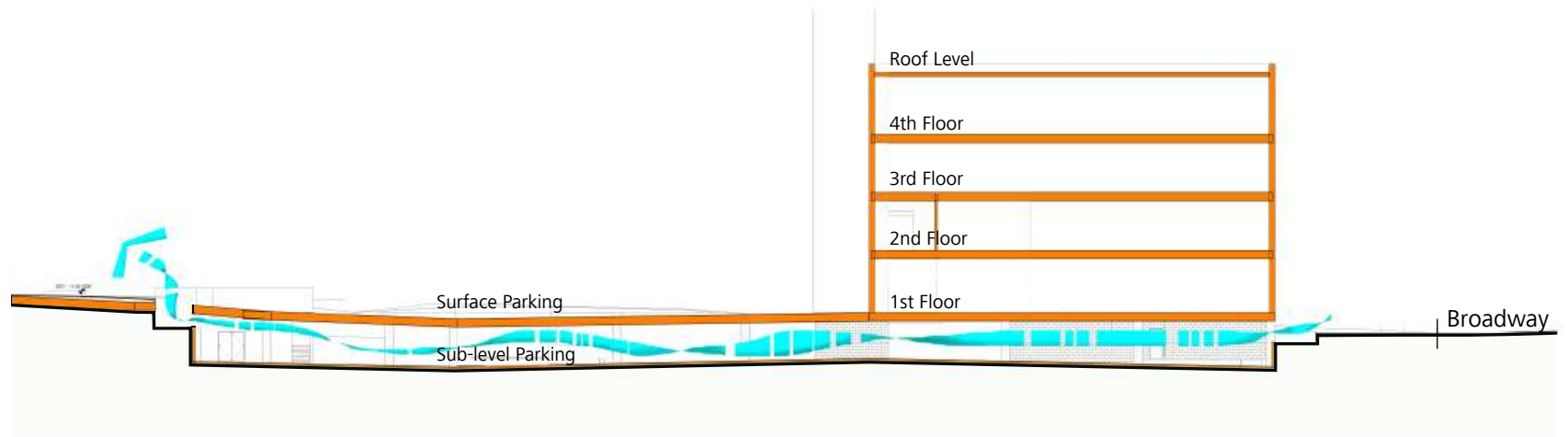
View East on Broadway



mahlum

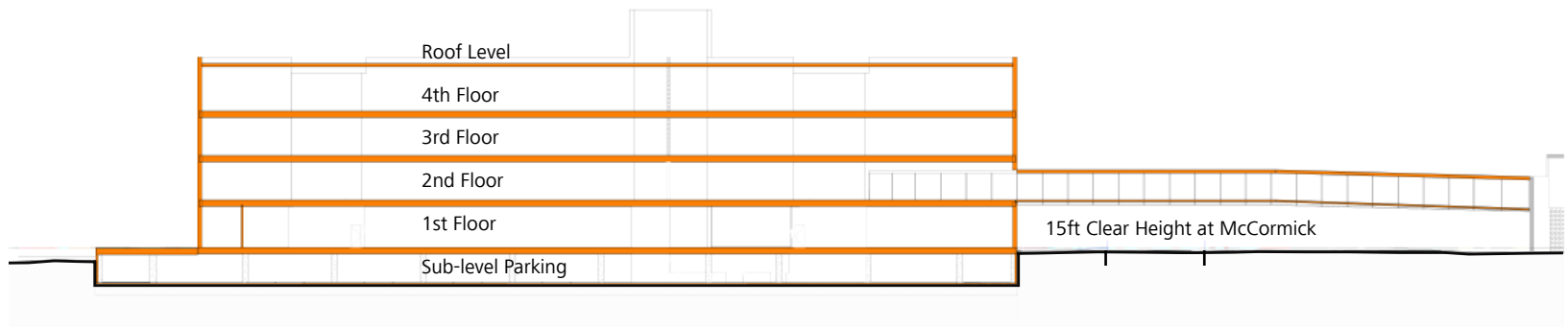
PROVIDENCE ST. PATRICK HOSPITAL - AMBULATORY CARE BUILDING

North-South Section



PROVIDENCE ST. PATRICK HOSPITAL - AMBULATORY CARE BUILDING

East-West Section at Sky Bridge





- LEGEND**
- PROPOSED CURB AND GUTTER
 - PROPOSED CURB AND GUTTER W/LAYDOWN
 - PROPOSED CONCRETE SIDEWALK
 - PROPOSED ASPHALT
 - PROPOSED LANDSCAPING
 - PROPOSED ADA TRUNCATED DOMES
 - PROPOSED ADA RAMP
 - PROPOSED SUMP

PARKING LOT DATA

NUMBER OF SPACE: 212

ACCESSIBLE PARKING SPACES REQUIRED: 7

ACCESSIBLE PARKING SPACES PROVIDED: 6

1111 EAST BROADWAY
MISSOULA, MONTANA 59802
TEL: 406-728-4611
FAX: 406-728-2476
WWW.WMGROUP.COM

BLOCK 40 - PARKING LOT LAYOUT

ST. PATRICKS HOSPITAL

MISSOULA, MONTANA

REVISIONS:

NO.	DESCRIPTION	DATE

PROJECT: 13-06-09
FILE No: 130609PARKINGLOT LAYOUTS.dwg
FILE PATH: W:\Projects\130609\CAD Data\Exhibits
LAYOUT: SITE PLAN
SURVEYED: ...
DESIGN: KB
DRAFT: EDI
APPROVE: ...
DATE: MARCH 2015

PRELIMINARY

PLOTTED: 4/2/2015
SAVED: 4/2/2015

SHEET 1 OF 1