

# Butte-Silver Bow Parks & Recreation Activity Guide 2025

Kids  
Summer Fun  
Events

Pg.27



Pg. 8-9

Brought  
to you by:



BUTTE-SILVER BOW

**PARKS &  
RECREATION**

The  
**MONTANA  
STANDARD**  
mtstandard.com



Intermountain  
Health



**BUTTE  
MONTANA**  
WILDLY HISTORIC



*Always here  
for your family's  
most important  
moments*



[TownPump.com](https://TownPump.com)





# YOUR LOCAL PRINTING PARTNER



FREE DELIVERY FOR  
BUSINESS ACCOUNTS



STATE OF THE ART  
DIGITAL PRINTERS



85+ YEARS OF COMBINED  
PRINTING EXPERIENCE



100% SATISFACTION  
GUARANTEE

**STOP IN AND SAY HELLO**

**SAME GREAT SHOP, NOW MORE LOCAL!**

## PRINT SERVICES

Letterhead • Envelopes • Forms  
Greeting Cards • Art Prints  
Promotional Products • Calendars  
Photography • Flyers • Posters  
Mailing Services • Postcards  
Banners • Checks • Design  
Bindery • Signs • Copying  
Wide Format Printing & Scanning  
Books • Adhesives • Magnets  
Acrylic Plastic and Metal Prints  
AND MORE!



**120 WEST PARK ST, BUTTE, MT**

**[www.parkstreetprinters.com](http://www.parkstreetprinters.com)**

**406 723 3363**

# OUR MISSION

The Butte-Silver Bow Parks and Recreation Department is committed to improving our community's health, stability, beauty, and quality of life by providing outstanding parks, trails, recreational facilities and leisure opportunities for all of our citizens.

Butte-Silver Bow Parks & Recreation at a glance:

- More than two dozen parks (many with pavilions that can be reserved), numerous playgrounds, a 9 hole regulation golf course, a par-3 golf course, a clubhouse with golf simulators, two disc golf courses, a splash pad, and a wading pool
- Ridge Waters: A family water park featuring two water slides, a lazy river, a zero depth entry children's area, a climbing wall, a diving board, swimming lanes, rentable cabanas, and a concession stand
- A new destination playground at Stodden Park
- An extensive urban and rural trail system
- Thompson Park: The only dually managed municipal/National Forest Service park in the nation
- Adult and youth programming, which include: volleyball, softball and pickleball and more
- Two historic mine yards that are now event facilities
- Community-wide special events



BUTTE-SILVER BOW

## PARKS & RECREATION

**We're on the web!**

[co.silverbow.mt.us/192/Parks-Recreation](https://co.silverbow.mt.us/192/Parks-Recreation)

[co.silverbow.mt.us/2092/Ridge-Waters-Waterpark](https://co.silverbow.mt.us/2092/Ridge-Waters-Waterpark)

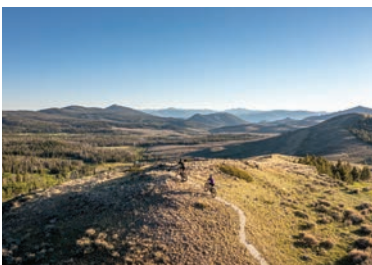
[co.silverbow.mt.us/452/Highland-View-Golf-Course](https://co.silverbow.mt.us/452/Highland-View-Golf-Course)

Find us on Facebook, X (Twitter) and Instagram!

Facebook: @BSB.Parks.Rec

X (Twitter): @ButteSilverBow

Instagram: @ButteParksandRec



On the cover:

Biking in Southwest Montana

Photo by:  
Jacque Garcia

This publication is brought to you in conjunction with

The **MONTANA STANDARD**  
[mtstandard.com](https://mtstandard.com)

## CONTENTS

*Parks & Recreation Fast Facts...* **Page 6**

*Urban Forestry...* **Page 7**

*Ridge Waters...* **Page 8**

*Popular Urban Parks...* **Page 10**

*Recreation Facilities...* **Page 16**

*Mine Yards...* **Page 18**

*Rural Parks & Recreation Near Butte...* **Page 20**

*Big Butte Open Space Trails...* **Page 21**

*Thompson Park Map...* **Page 22**

*Butte Urban Map...* **Page 23**

*Trail Etiquette and Safety...* **Page 24**

*Highland View Golf Course...* **Page 25**

*Summer Fun Youth Events...* **Page 27**

*Youth Clubs & Organizations...* **Page 28**

*Regional Outdoor Opportunities...* **Page 29**

*Rural Area Map...* **Page 33**

*Festivals & Special Events...* **Page 34**

*Parades...* **Page 37**

*Community Partners...* **Page 38**

*Winter Recreation...* **Page 44**

*\*Dates in book are listed as of print date and are subject to change.*





# A NOTE FROM THE DIRECTOR

Dear community members and visitors,

Welcome to the annual Butte-Silver Bow Parks & Recreation Guide. This publication has proven to be a go-to guide for those in our area as well as those who come to visit. We are proud to partner with our local schools to get the guide into the community and provide information on youth activities for this summer and all year round.

As I approach one year as your Parks and Recreation Director, this guide has given me the opportunity to reflect on the progress we have made within the department. One of the exciting developments was the unveiling of a brand-new logo and mission statement. The logo features Butte's iconic headframes — connecting our rich mining history with our deep love for outdoor spaces, historic mine yards, and our one-of-a-kind trail system. The mission at Butte-Silver Bow Parks and Recreation is: We enhance community life through parks, trails, aquatics, recreation,

and urban forestry, providing vibrant and accessible outdoor spaces for all. Whether you're exploring our trails, enjoying community festivals, or making a splash at our waterpark, this logo and mission statement reflects the spirit of fun, history, and adventure that makes Butte unique.

We have made important improvements this year to Mandan Park, Skyline Park, Clark Park Gazebos, and Rock Park, and we have begun to study the storm water challenges at Father Sheehan Park. We have also worked with our partners at Main Street Uptown Butte on the relighting of our beloved headframes.

For recreation, we are once again partnering with Skyhawks Sports Academy to offer a wide range of recreation programs at Stodden Park this summer. We now have lacrosse and volleyball camps, and for the first time, we are offering financial assistance for families who may not be able to afford the camp fees. We will continue to support adult volleyball, fitness classes, pickleball and explore other recreational opportunities for our community.

I am very proud of the work BSB Parks and Recreation staff have done throughout the year. I am equally proud of our community partners who continue to believe in our vision and offer support. One of our biggest supporters is the Butte Parks and Trails Foundation. If you love our parks and trails as much as we do, please consider providing a donation. 100% of these funds go back to improving our parks and trails.

What you can expect to see from Parks and Rec in the months ahead are opportunities to enhance our parks and recreation within in Butte. Enjoy this year's guide of all the recreation opportunities from Butte-Silver Bow and our partners in Southwest Montana.

Sincerely,

Shawn Fredrickson  
Butte-Silver Bow Parks & Recreation Director

## Thank you to the following

Butte Silver-Bow Parks and Recreation would like to thank the following for making this guide possible. It was a collaborative effort between the County Superintendent of Schools and their Summer Fun Flyer, Intermountain Health St. James Hospital, Butte Convention & Visitor Bureau and The Montana Standard.

### Butte-Silver Bow Parks and Recreation Department



[co.silverbow.mt.us/192/Parks-Recreation](https://co.silverbow.mt.us/192/Parks-Recreation)



Visit the Butte-Silver Bow Parks  
& Recreation website!

#### Parks and Recreation Director

Shawn Fredrickson  
406-497-6535  
[sfredrickson@bsb.mt.gov](mailto:sfredrickson@bsb.mt.gov)

#### Recreation & Events Coordinator

Ed Heard  
406-497-6571  
[ejheard@bsb.mt.gov](mailto:ejheard@bsb.mt.gov)

#### Parks Superintendent

Pete Schonsberg  
406-497-6408  
[pschonsberg@bsb.mt.gov](mailto:pschonsberg@bsb.mt.gov)

#### Cemetery Director

Susan Maloney  
406-497-6228  
[smaloney@bsb.mt.gov](mailto:smaloney@bsb.mt.gov)

#### Urban Forestry

Trevor Peterson  
406-497-6576  
[tpeterson@bsb.mt.gov](mailto:tpeterson@bsb.mt.gov)

#### Highland View Golf Course Manager

Keith Ogolin  
406-497-6578  
[kogolin@bsb.mt.gov](mailto:kogolin@bsb.mt.gov)

#### Ridge Waters Manager

Stacey Butler  
406-497-6585  
[sbutler@bsb.mt.gov](mailto:sbutler@bsb.mt.gov)



# Parks & Recreation Department **FAST FACTS**

## Recreation

- **20** Baseball/Softball Fields
- **20** Horseshoe Pits
- **14** Sports Courts
- **7** Soccer Fields
- **6** Ice Rinks
- **4** Volleyball Courts
- **3** Little Guy Football Fields
- **2** Folf Courses
- **1** Skating Ribbon
- **1** Nine Hole Golf Course
- **1** Par Three Golf Course

## Parks & Trails

**45**  
Developed Parks

**60**  
Miles of Trails  
App. 27.5 miles paved

**340**  
Acres of Developed  
Parkland

**4100**  
Acres of Open Space

**4200+**  
Trees  
boulevards, parks, golf courses

**103** Picnic Tables  
**24** Public Rest Rooms  
**24** Swing Sets  
**2** Fishing Pond

**1** Splash Pad  
**1** Wading Pool  
**1** Water Park

## Special Events

Art Walk	An Ri Ra
Butte Farmer's Market	Butte-Silver Bow County Fair
Lunch in the Park	Shakespeare in the Park
Music on Main	MICL Bike Race
Uptown Hoops	Civic Center Winter Bazaar
Colt Anderson's Dream Big Foundation	Christmas Stroll
Big Bang Freedom Festival	Ice Sculpting Contest
Butte 100 Mountain Bike Race	Snoflinga
Montana Folk Festival	Mai Wah Chinese New Year Parade
Big Brothers-Big Sisters	St. Patrick's Day
Rhythm & Brews	St. Patrick's Day Color Run

*In 2024, Ridge Waters served...*

**34,207**  
Guests Admitted

**3,635**  
Pretzels sold

**1,985**  
Pizzas sold

**2,212**  
Hotdogs sold

**179**  
Pizza Parties

**333**  
Cabana Rentals

*Ridge Waters requires 400,000 gallons of water heated at 85 degrees Fahrenheit to keep the awesomeness going!*

## Parks & Recreation Board Members

**Ristene Hall**  
**Anthony Laslovich**  
**Chuck Merrifield**  
**Michelle Shea**  
**Cathy Tutty**



*\*Above events are listed as of print date and are subject to change.*



# Urban Forestry



## Butte-Silver Bow Parks and Recreation Urban Forestry Trevor Peterson

Butte-Silver Bow's Urban Forestry mission is to manage and ensure urban forest infrastructure for current and future generations. Our urban forest consists of 3,300 street trees, 3,800 park trees (excluding



Thompson Park), and innumerable private property trees. Parks and Recreation is involved in managing or regulating these trees to differing degrees- creating and implementing the city's Urban Forest Management Plan, fostering community tree awareness and stewardship, developing tree policies and programs, monitoring and assessing the urban forest, documenting all trees in the Tree Inventory, and responding to tree emergencies.

I'm here as a resource for all tree related questions and advice. Privately owned trees play a pivotal role in the health and diversity of our urban forest. If you have any questions about tree care, proper planting techniques, species selection, or anything else, feel free to reach out.

You can contact me at [tpeterson@bsb.mt.gov](mailto:tpeterson@bsb.mt.gov), or connect with us on social media or the BSB website:

**Facebook:** Butte-Silver Bow Urban Forestry

**Instagram:** @bsb\_urban\_forestry

**Website:** [co.silverbow.mt.us/2076/Urban-Forestry](http://co.silverbow.mt.us/2076/Urban-Forestry)

## 8 Benefits of a Healthy Urban Forest in Butte

### 1. Soil Erosion Control

Tree roots stabilize the soil, reducing erosion, particularly vital in Butte's historically mined areas. Trees intercept rainfall, minimizing runoff and sedimentation into waterways.

### 2. Soil Quality Improvement

Certain trees absorb and neutralize soil contaminants like heavy metals. Leaf and organic matter decomposition enriches the soil and supports ecosystem health.

### 3. Air Quality Enhancement

Trees naturally filter airborne pollutants and particulates, essential in mitigating industrial and urban pollution. Additionally, trees capture carbon dioxide, aiding climate change mitigation.

### 4. Wildlife Habitat

Urban trees create essential habitats, supporting diverse wildlife and attracting vital pollinators like bees, birds, and butterflies, thus enhancing biodiversity.

### 5. Mining Waste Mitigation

Trees serve as natural barriers to mining contaminants, preventing harmful substances from spreading. Some species can neutralize soil and water acidity caused by mining.

### 6. Water Quality Protection

Trees filter stormwater runoff, reducing contaminants entering our streams and rivers. Riparian trees stabilize stream banks and buffer water bodies against pollutants.

### 7. Community Health

Green spaces lower stress, enhance mental health, and provide recreational and aesthetic value, positively impacting community well-being and property values.

### 8. Cultural and Historical Connection

Trees symbolize community resilience and recovery, reconnecting Butte residents with their cultural and environmental heritage, reflecting the city's historical journey.



# RIDGE WATERS

Photo by: The Montana Standard



**Ridge Waters** is Montana's best family water park. This state of the art facility features two water slides, lazy river, zero depth children's area with interactive play features, a diving board, climbing wall, swimming lanes, and more. The fun will extend out of the water as well with ample deck and green space, a concession stand with outdoor seating and cabanas.

- Address: 3103 South Utah.  
Phone: **406-497-6585**  
Website: [co.silverbow.mt.us/2092/Ridge-Waters-Waterpark](http://co.silverbow.mt.us/2092/Ridge-Waters-Waterpark)
- OPEN: 12pm - 3pm or 4pm - 7pm

- **No outside food, drinks, or coolers are allowed**
- When in the pool, children under 14 years old must be accompanied by an adult.
- No inflatables are allowed. Inner tubes are available at **no charge** for the Lazy River only.
- Call **406-497-6585** or [co.silverbow.mt.us/2092/Ridge-Waters-Waterpark](http://co.silverbow.mt.us/2092/Ridge-Waters-Waterpark) for more information. For questions or concerns email [sbutler@bsb.mt.gov](mailto:sbutler@bsb.mt.gov)



Provided Photo

- **Having a Party?** Cabana Rentals are available at **406-497-6585**. Go to [co.silverbow.mt.us/2092/Ridge-Waters-Waterpark](http://co.silverbow.mt.us/2092/Ridge-Waters-Waterpark) for more info. Cabanas can be only rented up to seven days prior to an event.  
Rental Hours: 12pm-3pm or 4pm-7pm for \$50





## Ridge Waters Prices

Prices	Daily Admission	10 Punch Pass
Child 0-2	FREE	FREE
Youth 3-17	\$5.00	\$40.00
Adult 18-60	\$7.00	\$60.00
Senior 61+	\$5.00	\$40.00
\$2.00 deck admission for non-swimmers		



**Butte Parks & Trails**  
FOUNDATION

Formerly Friends of Stodden Park

## Financial Assistance for Ridge Waters

Butte Parks and Trails Foundation and Ridge Waters will be offering sponsorship for low-income families that live in the City-County of Butte-Silver Bow. These sponsorships will be limited and will be awarded on a first-come first-serve policy. Applicants must meet income guidelines in order to be considered.

Go to [co.silverbow.mt.us/2092/Ridge-Waters-Waterpark](https://co.silverbow.mt.us/2092/Ridge-Waters-Waterpark) for a financial assistance form.

## Want to Sponsor a Child?

Your sponsorship will help provide financial assistance to ensure all children in Butte-Silver Bow have access to Ridge Waters.

Go to [friendsofstodden.com](https://friendsofstodden.com), call 406-497-6571 or scan the QR code below for more information.



Photo by: Ed Heard





# POPULAR URBAN PARKS

Photo by: Bob Lazzari



**Montana  
Resources**

**DENNIS & PHYLLIS  
WASHINGTON  
FOUNDATION**

## STODDEN PARK

Come see the new additions to **Stodden Park** and all of the wonderful features this park has to offer!

Thanks to a generous donation from the Dennis and Phyllis Washington Foundation and Montana Resources, Stodden Park has become Montana's destination playground.

No other park in Montana offers more entertainment and fun than Stodden Park.

This inclusive mining themed playground features a full size mine dump truck with slides, a 30 foot rope climber, a "Big M" replica with climbing wall, swings, zip line, and more. For the smaller ones, Stodden has a designated area surrounded with workout stations for the adults.

Stodden Park is home to Ridge Waters Water Park, Highland View Golf Course, the Spirit of Columbia

Gardens Carousel, a walking trail, three rentable pavilions, sports courts, softball fields with concessions, horseshoe pits, picnic pavilions, several playground areas and a common area between Ridge Waters and the carousel, an amphitheater, and Butte's Vietnam and Korea War memorials.

The **Spirit of Columbia Gardens Carousel** is built in memory of the Columbia Gardens and will help preserve and restore an important part of Butte's history. The carousel features 35 hand carved horses and 2 chariots as well as other decorative elements to make it reminiscent of the carousel once located at the historic Columbia Gardens in east Butte. **406-494-7775** or **buttecarousel.org**



Photo by: Meagan Thompson



Photo by: Steven Cordes



## CHESTER STEELE PARK



Provided Photo

Chester Steele Park features a wading pool, playground, picnic tables and is the location of Butte's Freedom Festival on July 3rd. Chester Steele Park is located on the corner of Silver & Alabama Streets below Intermountain Health St. James Hospital.

## CLARK PARK



Photo by: Tracy Thornton

Clark Park, one of Butte's most popular summer haunts, offering numerous recreational opportunities, including playgrounds with the original "cowboy swings" from Columbia Gardens, picnic areas with reservable pavilions, sand volleyball pit, basketball court, splash pad and more. Clark Park is located off Texas Avenue just a few blocks east of Harrison Avenue.

# BUTTE TROLLEY TOURS

The fastest and most colorful way to learn about Butte, learn about the characters, famous folks and much more.

### MEMORIAL DAY - SEPTEMBER

Monday - Saturday — 10:00 | 12:30 | 3:00

Sunday — 10:00 | 12:30 | 2:30

### WEDNESDAY NIGHTS: JUNE - AUGUST

Spooks & Spirits Tours — 6:00-8:00 p.m.

RESERVATIONS can be made at  
[WWW.BUTTECHAMBER.ORG](http://WWW.BUTTECHAMBER.ORG)



**BUTTE**  
**CHAMBER OF COMMERCE**  
1000 George St. | 406.723.3177  
[ButteChamber.org](http://ButteChamber.org)



## FATHER SHEEHAN PARK

Photo By: Jenean Kujawa



Father Sheehan, a popular downtown park, is the home of Mile High Little League, and includes covered reservable picnic areas and tennis/pickleball courts. Father Sheehan also serves as the trailhead for the Blacktail Creek urban walking trail. Father Sheehan Park is located off Holiday Park Drive.

## SKYLINE PARK

Photo by: Annie Pentilla



Skyline Park is Butte's newest outdoor space. It not only has an ADA-approved playground, but is home to Butte's only sanctioned dog park and kids' fishing pond. Nestled against the foothills, Skyline has a vast network of trails and secluded picnic areas for all to enjoy. Skyline Park is located on Bayard Street off of Continental Drive.

## FOREMAN'S PARK

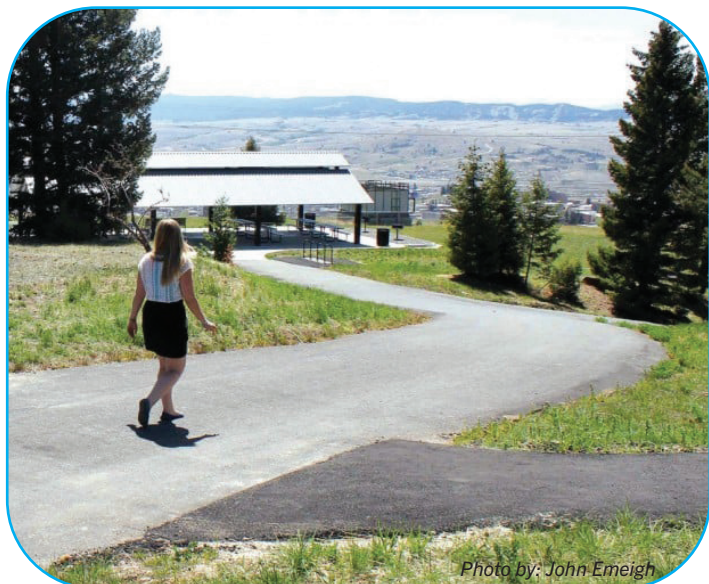


Photo by: John Emeigh

Foreman's Park offers one of Butte's best views. Foreman's Park sits at the site of the Mountain Con Mine: A mile high and a mile deep and is one of the trailheads for the BA&P trail. Foreman's park has Butte's largest reservable pavilion and is a great place to wander and explore the richest hill on earth. Foreman's Park is located one block east of Main Street on Pacific Street.

## COPPER MOUNTAIN SPORTS PARK

Photo by: Jenean Kujawa



Copper Mountain Sports Park is a 30-plus-acre site that includes playground equipment, disc golf course, youth baseball and football fields, volleyball courts, picnic areas, shelters, walking trails, and Butte's public golf driving range. Its newest addition is the Three Legends Field, home of the Butte Miners and Muckers baseball teams. This first-class baseball facility boasts a 500-seat covered grandstand and brick inlaid common area. Copper Mountain Park is located off Beef Trail Road under the shadow of Timber Butte.



# PARKS & RECREATION PROGRAMS

## Children's Programs

Contact the Parks and Recreation Department for our Summer Children's Program at **406-497-6571** or [co.silverbow.mt.us/192/Parks-Recreation](http://co.silverbow.mt.us/192/Parks-Recreation)

## Skyhawks Sports Academy

Butte-Silver Bow Parks and Recreation and Skyhawks Sports Academy are offering summer sports camp this summer at Stodden Park. Children are given a positive sports experience while promoting a healthy, active lifestyle. These camps are for ages 6-12 years old. If your game is soccer, football, baseball, tennis, volleyball or enjoying Ridge Waters, Skyhawks has you covered! Call **800-804-3509** or online at [skyhawks.com](http://skyhawks.com)



### Flag Football Camp

Dates	Day	Time	Ages	Location
6/16-20	M,T,W,F	9am-12pm	6-12	Stodden Park
6/16-20	M,T,W,F	9am-3pm	6-12	Stodden Park*

### Soccer Camp

Dates	Day	Time	Ages	Location
6/23-27	M-F	9am-12pm	6-12	Stodden Park
6/23-27	M-F	9am-3pm	6-12	Stodden Park*

### Lacrosse Camp

Dates	Day	Time	Ages	Location
6/30-7/3	M-Th	9am-12pm	6-12	Stodden Park
6/30-7/3	M-Th	9am-3pm	6-12	Stodden Park*

### Volleyball Camp

Dates	Day	Time	Ages	Location
7/7-11	M-F	9am-12pm	6-12	Stodden Park
7/7-11	7days	9am-3pm	6-12	Stodden Park*

### Tennis Camp

Dates	Day	Time	Ages	Location
7/14-18	M-F	9am-12pm	6-12	Stodden Park
7/14-18	M-F	9am-3pm	6-12	Stodden Park*

### Multi-Sport (Basketball, Soccer and Volleyball)

Dates	Day	Time	Ages	Location
7/21-25	M-F	9am-12pm	6-12	Stodden Park
7/21-25	M-F	9am-3pm	6-12	Stodden Park*

### Baseball Camp

Dates	Day	Time	Ages	Location
7/28-8/1	M-F	9am-12pm	6-12	Stodden Park
7/28-8/1	M-F	9am-3pm	6-12	Stodden Park*

### Multi-Sport (Capture the Flag, Dodgeball and Ultimate Frisbee)

Dates	Day	Time	Ages	Location
8/4-8	M-F	9am-12pm	6-12	Stodden Park
8/4-8	M-F	9am-3pm	6-12	Stodden Park*

\*All Day Camp with a Swim Combo

Photo by: Ed Heard



## Shakespeare in the Park

**September 1st:** Save the date! Montana Shakespeare in the Park presents "As You Like It" at Stodden Park on September 1st at 5:30pm.

## Adult Volleyball

Every autumn through early winter, Butte-Silver Bow Parks and Recreation offers league volleyball, which is played at the Civic Center Annex off of Harrison Avenue. There are both women and mixed leagues. **406-497-6571**

## Softball

The Butte Adult Softball Association offers league softball, which is played at Stodden Park off of Utah Avenue. There are mixed, men's, and women's leagues. Facebook: **Butte Adult Softball Association**

## Pickleball

Pickleball is a fun sport that combines many elements of tennis, badminton and ping-pong. It is played both indoors and outdoors on a badminton-sized court using a paddle and a plastic ball. There are two courts at Whittier School, four courts at Stodden Park. Open play is offered on three courts at the Civic Center Annex from October through May. **406-497-6571**

## Yoga in the Park

Join Parks and Recreation for Yoga in the Park. Yoga will be held at J.F.K. Park on Monday and Wednesday evenings. Times and start date to be determined. Contact Cassandra at [ccrnichyoga@yahoo.com](mailto:ccrnichyoga@yahoo.com) or call **406-497-6571**

## Outdoor Fitness Opportunities

This summer, join a variety of local instructors and BSB Parks and Recreation for a season of fun, FREE outdoor fitness classes! From high-energy workouts to restorative movement, there's something for everyone to enjoy. Make the most of Montana's sunshine by moving your body, enjoying our beautiful parks, and connecting with your community. Classes begin in June and run through August. For updates and class details, follow **@JoyUnlocked406** on social media or contact Quincy at **406-498-6411**. Let's make it a summer of movement and joy!

## HIKE THROUGH HISTORY

Photo by: Ed Heard



Thursday mornings at 9:00 AM. July 17th – September 4th. Experience the history of Butte's trail system. Join for a walk and talk with knowledgeable historians and professionals. For more information call: **406-782-3280**

### **July 17th: Maud S Canyon with Rotary Club**

Maud S Canyon is a favorite hiking destination on the East Ridge. Discover the new Mining Heritage Trail with a collapsed shaft, adit, and several small exploration sites that relate to the mining activity there.

**Meet at:** Maud S Canyon Trailhead  
(Moderate – Incline on dirt)

### **July 24th: St. Patrick's and Mount Moriah Cemetery Tour with Aubrey Jaap and Lindsay Mulcahy.**

Come for a walk through St. Patrick's and Mount Moriah cemeteries and learn about some of those interned there as well as the symbolism behind their intricate headstones.

**Meet at:** St. Patrick's Cemetery  
(Beginner—mostly flat terrain)

### **July 31st: Thompson Park with Jocelyn Dodge**

Get away from it all without getting too far away! Explore the Milwaukee Road and its fun and adventurous route through Thompson Park.

**Meet at:** Sagebrush Flats  
(Moderate – Incline on dirt)

### **August 7th: Ghost Sign Tour with Aubrey Jaap, Christine Martin, and BT Livermore**

Learn about Butte's historic ghost signs—the businesses and the art behind them!

**Meet at:** Butte Archives  
(Moderate—Paved, incline)

### **August 14th: Upper West Side with Mary McCormick**

Experience the upper "West Side" with its charming and one-of-a-kind houses, many with historical significance, as you navigate your way through this fascinating neighborhood.

**Meet at:** Parking at Excelsior and Caledonia by Anselmo Mine  
(Moderate—Paved, incline)

### **August 21st: Bell Diamond Tour with Abby Peltomaa**

Visit one of the oldest standing steel headframes on the Hill on the way to the overlook of the Berkeley Pit.

**Meet at:** Granite Mountain Memorial  
(Moderate – Incline on dirt)

### **August 28th: West Side Reservoir with Kate McCourt**

Water from the Big Hole pipeline flowed to the 14-million-gallon West Side Reservoir near Big Butte, from where it was sent to Centerville, the Uptown Business District, and the West Side. Learn more about this architectural resource!

**Meet at:** North Excelsior and Missoula Avenue  
(Beginner—mostly flat terrain)

### **September 4th: Highland City with Dave Stratton and Phyllis Hargrave**

Visit one of the area's historic mining ghost towns in this rare opportunity!

**Meet at:** Stodden Park  
(Moderate – Incline on dirt)



## WALK WITH EASE

Walk with Ease is a walking group specifically designed to help individuals start and maintain a safe walking routine. Participants meet Mon., Wed., and Fri. at 9am at Stodden Park, May 19th - July 3rd under the direct supervision of trained walking leaders. Each meeting begins with a pre-walk discussion covering a specific topic related to exercise and arthritis, followed by a 10 – 40 minute walk that includes warm-up and cool-down. Participants completing this program will experience improved functional ability, decreased depression, decreased pain, and increased confidence in one's ability to exercise. Contact Samantha Patrick for details **406-497-5085**.



## PARKS & FACILITY RESERVATIONS

Photo by: John Emeigh



Butte-Silver Bow has more than 450 acres of developed and undeveloped park land for all types of outdoor recreation opportunities. Many of our parks have amenities for any occasion, including picnic facilities, large events, the ability to host large athletic tournaments and more. Citizens are invited to rent and reserve park facilities at [co.silverbow.mt.us/192/Parks-Recreation](https://co.silverbow.mt.us/192/Parks-Recreation) or call **406-497-6571** for assistance.

### Facilities with pavilions that can be rented:

Basin Creek	Foreman's Park
Clark Park	The Original Mine Yard
Copper Mountain	Stodden Park
Emma Park	Father Sheehan

**Stix and Franz CARPET**

Call for your design appointment

**Shop LOCAL**

Flooring for every room in your home or business  
CARPET TILE HARDWOOD and more

926 S Arizona – Butte • 494-1313

## 2025 DREAM BIG MONTANA EXPERIENCE

# SAVE THE DATE

THURSDAY, JUNE 26TH & FRIDAY, JUNE 27TH

### THURSDAY

#### SUMMER KICK OFF

##### FAMILY FUN AREA

4PM - 6PM | GALENA ST. - BELOW PARKING GARAGE

##### KEITH SAYERS FMX SHOW AND CONCERT

PARK ST. | 6PM-10PM | HEADLINER ANNOUNCED SOON!



### FRIDAY

#### UPTOP SKILLS CAMP

NARANCHO STADIUM | REGISTRATION OPENS IN JUNE

9:00AM - K-4TH CHECK-IN

10:00AM - 11:00AM (CAMP FOR K-4TH)

10:30AM - 5TH-8TH CHECK-IN

11:30AM - 1:00PM (CAMP FOR 5TH-8TH)

#### COCKTAIL PARTY AND AUCTION

METALS BANK | 6PM | TICKETS ON SALE SOON

LESKOVAR HONDA, UPTOP CLOTHING CO, LANGLAS & ASSOCIATES, TDS FIBER, TOWN PUMP, SUMMIT BEVERAGE, NORTHWESTERN ENERGY, METALS SPORTS BAR & GRILL, OPPORTUNITY BANK, WENDY'S, BUTTE PHYSICAL THERAPY CENTER, DAVIDSON, MINER'S HOTEL, VALLEY BANK, BURKE ORIZOTTI REAL ESTATE, J&C BODY SHOP, ROCKY MOUNTAIN CREDIT UNION, JAKE LOWNY, MCDONALD'S, EXTRA SPRINKLES, JOSIE TRUDGEON PHOTOGRAPHY, STEELE'S, MONTANA ABSTRACT, FRED KREPPS, MILE HIGH BEVERAGE, HARRINGTON FLOORING, BUTTE CHAMBER OF COMMERCE, A1 AMBULANCE



# RECREATION FACILITIES



Courtesy Photo

## BUTTE HIGH - NARANCHE STADIUM



Photo by: Tracy Thornton

Home of the Butte High Bulldogs, located at 401 S. Wyoming St., Naranche Stadium was rebuilt and re-opened in 2011. It is Montana's premier high school football stadium.

## EAST MIDDLE SCHOOL

Located at 2600 Grand Avenue, Bulldog Memorial Stadium: Home of the Swede Dahlberg Invitational, Southwest Montana's largest high school track meet. East Middle School boasts one of Butte's best outdoor athletic facilities.

## THREE LEGENDS STADIUM

Home to Butte's American Legion brand new Miners' Field and Three Legends Stadium off S. Montana St. on Beef Trail Road. This is Montana's best place to watch baseball. Copper Mountain is also home to Butte Little Guy Football, Butte's only public golf driving range and an 18-hole disc golf course.

## MAC CENTER



Provided Photo

An all-purpose facility that hosts everything from basketball and volleyball games to community meetings and events. Home to the Butte Central Maroons Basketball and Volleyball teams, located at 550 E. Mercury St.

## JEREMY BULLOCK SOCCER COMPLEX



Photo by: Meagan Thompson

Jeremy Bullock Soccer Complex: Located on 1107 Four Mile Road, this field hosts soccer games and tournaments for all ages.



## MT TECH - BOB GREEN FIELD

Photo by: Meagan Thompson



Located on the West end of Park Street at Montana Tech. The field is named after the Montana Tech Orediggers' long-serving, outspoken and quick-witted football coach, Bob Green. This new state-of-the-art facility is home to the Montana Tech Orediggers.

## THE BUTTE CIVIC CENTER

Photo by Joseph Scheller



1340 Harrison Ave. is home to Southwest Montana's largest multipurpose indoor arena. It hosts multiple sporting events, concerts as well as political events. The Butte Civic Center has a capacity of 7,500.

## SWEDE DAHLBERG FIELD

Named after famed Butte athlete and coach Harry "Swede" Dahlberg. This field features a running track, all purpose sports fields and newly finished tennis courts located at West Elementary School, 1000 W. Steele St.

## MOTHER LODGE THEATRE

Photo by: Mother Lode Theatre



Built as the Temple Theatre in 1923, the Mother Lode has emerged, after a \$4 million renovation, as an opulent and fully equipped performing arts center. Resting at 316 W. Park, The Mother Lode is a popular venue for local, regional, and national touring productions as well as community events. **406-723-3602** or [buttearts.org](http://buttearts.org)

## BUTTE-SILVER BOW PUBLIC ARCHIVES

Photo by: Joseph Scheller



Located at 17 W. Quartz, the Archives maintain non-current government records of Butte-Silver Bow as well as historical photographs and manuscripts relating to Butte's history. Visit the Archives for tours, exhibits, research and our Brown Bag Lunch series. [buttearchives.org](http://buttearchives.org)



# MINE YARDS

Butte-Silver Bow Parks and Recreation maintains two former mine yards, The Original and Foreman's Park at the Mountain Con. **406-497-6571**.

## MOUNTAIN CON & FOREMAN'S PARK



*Photo by: Joseph Scheller*

Originally the site of the former mine foreman's house, Foreman's Park is built on the remediated ground of the historic Mountain Con mine yard. It features sweeping views of Butte's Summit Valley, the East Ridge, the Highlands Range, and the surrounding Anaconda-Pintler, Pioneer and Flint ranges. It also extends by two miles the paved Copperway and Butte, Anaconda & Pacific trails that snake through Uptown and the West Side from Montana Tech to the Granite Mountain Memorial further north. The Mountain Con is an easily identifiable landmark - it is the mine headframe that bears the slogan 'Mile High, Mile Deep' at its base, referring to Butte's elevation above sea level and the depth of the Mountain Con Mine itself.

Park amenities include a pavilion, rest rooms, picnic tables and benches, interpretive signs, barbecue grills and more. Historical features in the project area were preserved and interpreted through signage. The pavilion at the Mountain Con is available for rent. Go to [co.silverbow.mt.us/192/Parks-Recreation](https://co.silverbow.mt.us/192/Parks-Recreation) or **406-497-6571**.

The walking trails and park can be accessed via parking lots at these locations:

- On Wyoming Street, a block north of Woolman Street.
- On Pacific Street— turn east off of Main.
- On Center Street — turn east off of Main.

## ORIGINAL MINEYARD



*Photo by: Joseph Scheller*

The Original Mine Yard is one of Butte's signature historically preserved mining yards. The yard is home to a headframe (also called a "gallus" or "gallows" frame) that was used to lower men and mining equipment down into the mine and lift up Butte's gift to the United States: copper. The hoist house on site still houses the enormous gears that operated the lift to carry men and minerals up and down the shaft.

The Original Mine Yard has found new life as the world-class event location for the Montana Folk Festival, the An Ri Ra Irish Festival and BBBS Rhythm & Brews.

From the grassy lawn of the Original yard, watch world-famous musicians saw at their violins or pluck banjos during the Folk Festival. Enjoy the fast-kicking Irish step dancers during An Ri Ra.

The Original Mine Yard means entertainment in a city known for its original personality. If you are interested hosting an event at the Original Mine Yard, call **406-497-6571**.





# MAKE BUTTE YOUR MONTANA BASECAMP



[BASECAMPBUTTE.COM](https://basecampbutte.com)



# RURAL PARKS & RECREATION NEAR BUTTE



Photo by: Jacque Garcia

## THOMPSON PARK

Thompson Park is a Congressionally designated Municipal Recreation Area managed by Butte-Silver Bow and Beaverhead-Deerlodge National Forest. This 3,500 acre natural areas at the edge of town offers mountain biking, horseback riding, and hiking opportunities on more than 28 miles of trails that provide a connection to the Continental Divide National Scenic Trail (CDNST). Spend the day at one of three picnic areas or enjoy a round of disc golf at the Eagles Nest Disc Golf Course. The park boasts 4.5 of the Milwaukee Road Rail-Trail that travels through two tunnels and across a trestle that connects to the CDNST and serves as a backbone to top trail opportunities. During the winter Highlands Cycling Club grooms 14 miles of trails for fat-tire biking, backcountry skiing and snowshoeing with additional 17 miles of ungroomed trails for winter fun.

## JON'S GULCH WILDFLOWER WALK

**Coming in June** - Flowers are blooming at Thompson Park! Come join the Beaverhead-Deerlodge National Forest's botanist and pollinator exploring the colorful flowers in the park. Meet at Sagebrush Flats. **406-494-2147**

## BIG BUTTE OPEN SPACE

Big Butte offers hiking trails, a mountain bike skills park, and a disc golf course to recreation enthusiasts. Big Butte is home to the famous Montana Tech "M" and has an easy uphill climb to the top offering panoramic views of the entire valley.

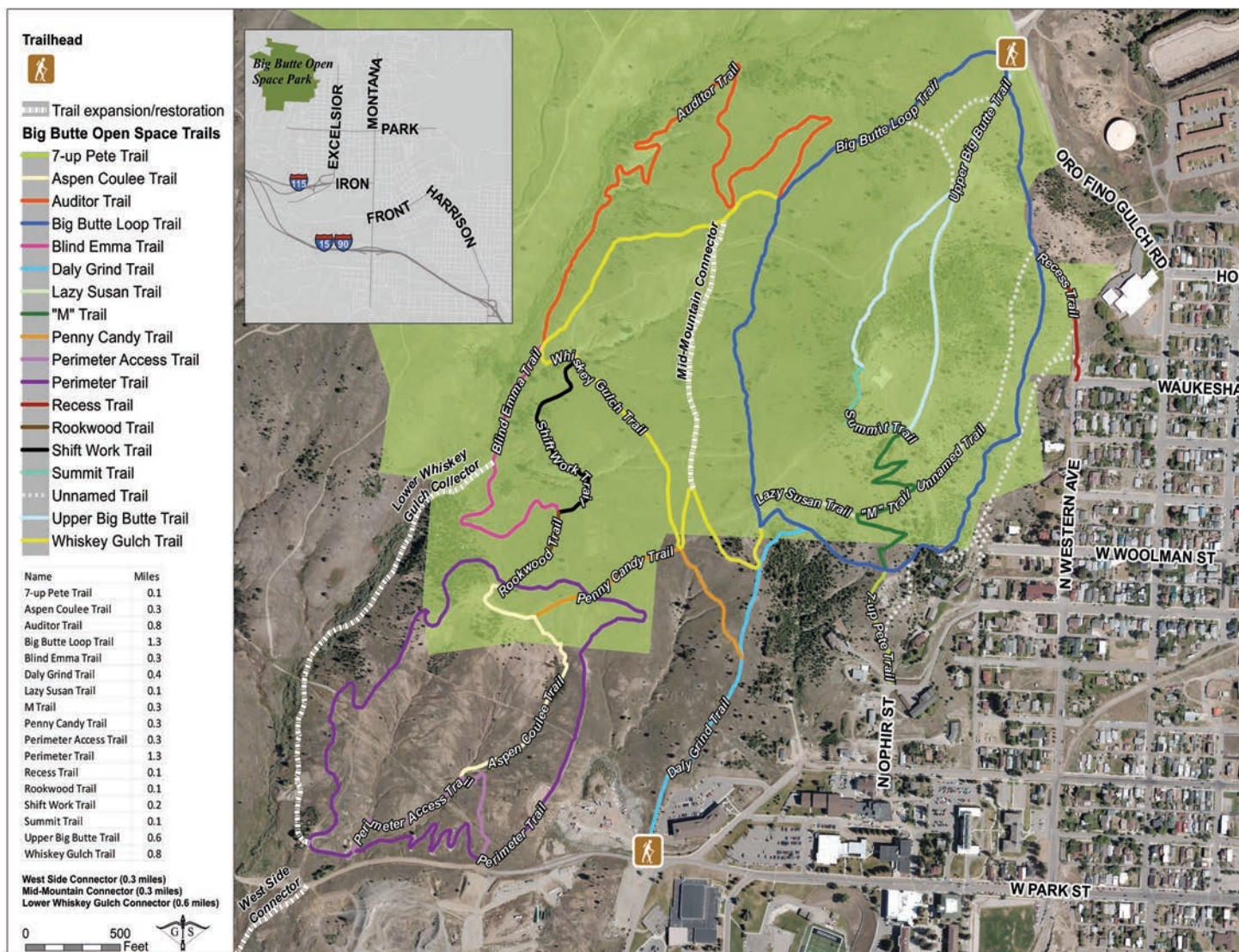
## BASIN CREEK

Located just outside Butte, Basin Creek is a quick and easy getaway from the urban hustle and bustle of Butte's famous Uptown. Basin Creek features a reservable gazebo as well as hiking opportunities.

## SHEEPSHEAD RECREATION AREA

Sheepshead Recreation Area is located 20 miles north of Butte. Pavilions can be rented for special events. Contact the Butte Ranger District at **406-494-2147**.





Go to [co.silverbow.mt.us/712/Big-Butte-Open-Space](https://co.silverbow.mt.us/712/Big-Butte-Open-Space) for the Big Butte Open Space Interactive Map

## POPULAR LOCAL TRAILS

**BA&P Trail** 4.1 miles

**Big Butte Open Space Trails** over 3 miles of usable trails

**Blacktail Creek Trail** 1.75 miles

**Civic Center Trail** 1.44 miles

**Maud S Canyon Trail** 4 miles

**Silver Bow Creek Greenway Trail** 6.1 miles

**Thompson Park Trails** over 25 miles of usable trails

For more extensive information on area trail, camping and hiking information please visit Butte-Silver Bow's Trails & Outdoor Recreation page at [co.silverbow.mt.us/454/Trails-Outdoor-Recreation](https://co.silverbow.mt.us/454/Trails-Outdoor-Recreation).

# Take A Hike!

Check out the hiking and biking opportunities that Butte and the surrounding area has to offer.

BSB Parks and Recreation understands the importance of physical outdoor activity. Follow CDC health guidelines and practice social distancing as you enjoy our trails and open spaces:

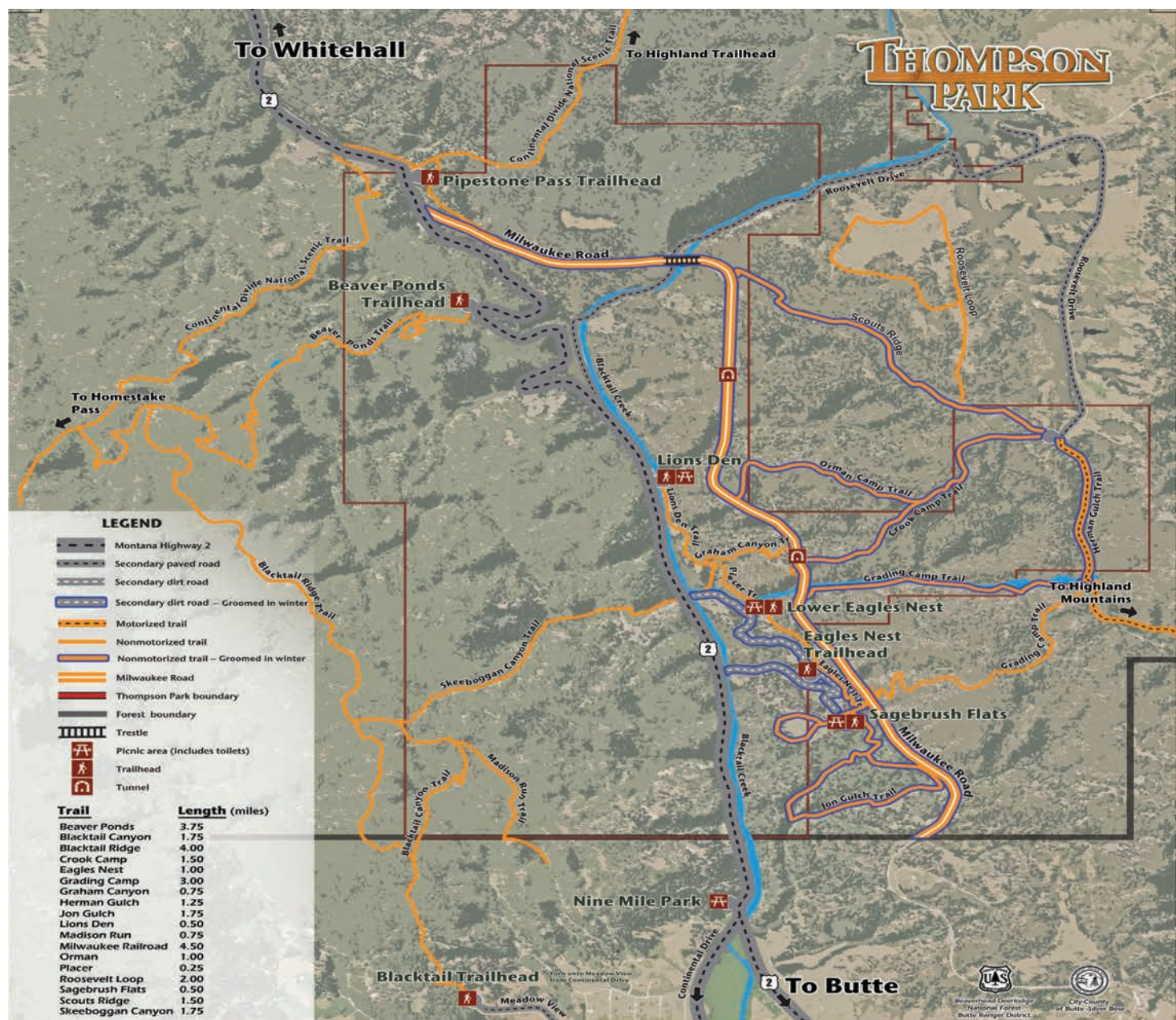
- Wash hands before and after visiting trails and open spaces
- Stay 6' or more from others
- Stay home if sick

Trails and conservation lands are open. Go to [butteparksandrec.com](https://butteparksandrec.com) and click on Trails & Outdoor Recreation for Trail Info & Maps.

Call 497-6571 or 497-6535 for more information

**BUTTE-SILVER BOW PARKS & RECREATION**





## OUTDOOR ADVENTURE JUST 15 MINUTES FROM BUTTE!

- The Milwaukee Road – a fun and adventurous route through the heart of the Park with beautiful vistas, cavernous tunnels and a breathtaking trestle.
- Trails – hikers, bikers and equestrians have numerous trails to explore with easy access to the Continental Divide National Scenic Trail. Look for interpretive signs to learn about the Park's history, geology, wildlife, and plants.
- Several trails are groomed for winter use.
- Picnic areas – several picnic areas are available for family outings and quiet getaways.
- Eagles Nest Disc Golf course – try your luck on the challenging 18-hole course at Sagebrush Flats.

**Butte-Silver Bow Parks and Recreation**  
 1340 Harrison Ave.  
 Butte, MT 59701  
 (406) 497-6571  
[www.co.silverbow.mt.us](http://www.co.silverbow.mt.us)

Please follow these simple rules:

- Thompson Park is a DAY-USE facility open daily May through October. No overnight camping.
- Fires are allowed ONLY at picnic-site grills. Camp stoves and portable barbecue grills are allowed.
- Discharging firearms, arrows, or other weapons is prohibited in the Park.
- Firewood cutting is not allowed.
- Help us keep the Park clean for all visitors, place garbage in designated trash containers.
- Share the trail and respect all trail users.

**Beaverhead-Deerlodge National Forest**  
 Butte Ranger District, 1820 Meadowlark Lane  
 Butte, MT 59701  
 (406) 494-2147  
[www.fs.usda.gov/bdnf](http://www.fs.usda.gov/bdnf)

The City-County of Butte-Silver Bow is an Equal Opportunity Employer (M/F/H/V)

Go to [co.silverbow.mt.us/454/Trails-Outdoor-Recreation](http://co.silverbow.mt.us/454/Trails-Outdoor-Recreation) for the Regional Trails interactive map



# Enjoy Butte's outdoor spaces.



## HEADFRAMES

- A Anselmo
- B Belmont
- L Lexington
- C Mtn. Con
- G Orphan Girl
- O The Original
- T Travona

## TRAILS

- 1 Alice Knob
- 2 BA&P Hill Trail
- 3 Kenneally-Poore/Wilde Trail
- 4 Maud S Canyon Trail
- 5 Silver Bow Greenway
- 6 Ulrich/Schotte Nature Trail

## PARKS

- 7 Anselmo Park
- 8 Big Butte Park
- 9 Chester-Steele Park
- 10 Clark Park
- 11 Copper Mountain Park
- 12 Father Sheehan Fields
- 13 Foreman's Park
- 14 High Altitude Park
- 15 Jeremy Bullock Field
- 16 Koprivica Park
- 17 Missoula Gulch Field
- 18 Skills Mtn Bike Park
- 19 Skyline Park
- 20 Stodden Park
- 20a Ridge Waters
- 20b Carousel
- 20c Highland View Golf
- 21 Swede Dahlberg Field
- 22 The Original Mineyard
- 23 Thompson Park



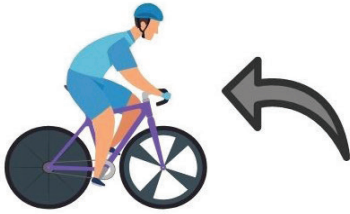
Go to [co.silverbow.mt.us/454/Trails-Outdoor-Recreation](https://co.silverbow.mt.us/454/Trails-Outdoor-Recreation) for the Regional Trails interactive map



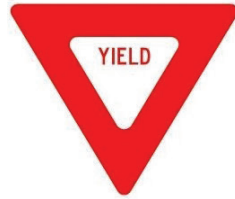


**BUTTE-SILVER BOW**

# **PARKS & RECREATION**



**ANNOUNCE  
"PASSING ON THE  
LEFT"**



**BIKERS YIELD TO  
PEDESTRIANS AND TRAVEL  
AT SAFE SPEED**



**KEEP DOGS ON SHORT  
LEASH**



**KEEP KIDS CLOSE**



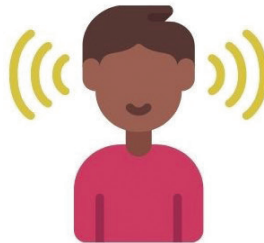
**REMAIN ON THE MAIN  
TRAILS**



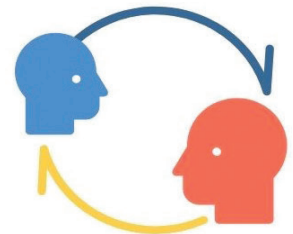
**UTILIZE THE BUDDY  
SYSTEM**



**UTILIZE WATER AND  
SUNSCREEN FOR  
YOURSELF AND OTHERS**



**BE AWARE OF  
SURROUNDINGS**



**TELL FRIENDS AND  
FAMILY WHERE YOU  
ARE GOING**



**TREAT THE TRAILS  
WITH RESPECT**



**EMERGENCY: 911  
NON-EMERGENCY:  
(406)497-1120**



**CARRY CHARGED CELL  
PHONE**



Photo by: Lindsay Alt

# HIGHLAND VIEW GOLF COURSE



**Highland View Golf Course** is located in Stodden Park at 3150 S. Utah. The entrances to Stodden Park is located off Dewey Boulevard and Rowe Road. Highland View offers a 9-Hole regulation course and a 9-Hole Par 3 course.

The regulation 9-Hole course was built in 1939. This par 35 course has 2 challenging Par-3s and a new green on Hole #6. The course is designed to challenge every aspect of the golfer's game. There is a different set of tees for the back nine. It takes around two hours to play nine holes. Once you are on the course, you will understand the course name, Highland View.

The par-3 course was built in 1980. The design of this course was to allow the golfer to have a full swing at each green. The greens have a lot of characteristics and challenge every golfer. The Par-3 is easy to walk and a lot of fun for the family.

The golf season at Highland View is from April 1st to October 31st. There is a driving range located at Copper Mountain Park.

For tee times, please call **406-497-6578** or [co.silverbow.mt.us/452/Highland-View-Golf-Course](https://co.silverbow.mt.us/452/Highland-View-Golf-Course). Tee times can be made 2 days in advance.

## LEAGUES

Men's – Thursday night 5:30 PM\*

Senior's – Tuesday morning 8:00 AM to 10:00 AM\*

Women's (Bonnie Highlanders) – Tuesday night 4:30 PM to 6:00 PM\* and Thursday morning 8:00 AM to 10:00 AM\*

Senior Scramble – 8:00 AM to 10:00 AM

## SIMULATOR LEAGUES

Winter League – 12 weeks beginning in the first week of November.

Spring League – 6 weeks beginning in the first week of March.

\*Non-Members are encouraged to participate and must pay Green Fees.

## JUNIOR GOLF CAMPS

**Session:** June 11th, 18th and 25th

**Ages:** 7-9, 9:00 AM to 10:15 AM  
10-12, 10:30 AM to 11:45 AM  
13-15, 12:00 PM to 1:15 PM

**Cost:** \$30 per the three week session

Register at Highland View Golf Course or call **406-497-6578** for more info.

## 2025 RATES

### 9 Hole Regulation

9 Holes - \$19 walking; \$32 with cart per golfer  
18 Holes - \$28 walking; \$47 with cart per golfer

### Par 3 Course

9 Holes - \$12 walking; \$25 with cart per golfer  
18 Holes - \$16 walking; \$35 with cart per golfer

### JUNIOR RATES

#### 9 Hole Regulation

9 Holes - \$10 or 18 Holes - \$15

#### Par 3 Course

9 Holes - \$5 or 18 Holes - \$8

\*Monday and Wednesday are \$2 on par 3 course for Juniors under age 18 years old until 4:00 pm



### Simulators

\$30 per hour

\$15 per hour - June through August

### 2025 SEASON PASS RATES

Single - \$350, Senior Single - \$260, Junior - \$130

Couple - \$475, Senior Couple - \$370

College Student (\*18-24) - \$250, Family \$600 (Kids must be under 25)

## CART FEES 2025

Annual Cart Trail Fee - \$125

Daily Trail Fee - \$5

Season Cart Usage - \$325 Season Cart Couple - \$525

## RENTALS

### RENTALS

Golf Club Rentals - \$15 / \$5 Junior Club Rentals

Pull Carts - \$3

## 2025 HIGHLAND VIEW GOLF TOURNAMENTS

May 30th - Highland College

July 26th - Men's Tournament

August 7th - Bonnies

August 20th - Jr City Championship

## OTHER GOLFING OPPORTUNITIES AROUND BUTTE

Butte Country Club, 3400 Elizabeth Warren, Butte MT.  
**406-494-7900**

Anaconda Country Club, 1521 Country Club Road,  
Anaconda MT. **406-797-3220**

Fairmont Hot Springs, 1500 Fairmont Road, Fairmont  
MT. **406-797-3000**

Old Works Golf Course, 1205 Pizzini Way, Anaconda MT.  
**406-563-5989**

Beaverhead Golf Course, 1260 Highway 41 N, Dillon MT.  
**406-683-9933**

Headwaters Golf Course, 225 N 7th Ave E, Three Forks  
MT. **406-285-3700**

Deer Lodge Golf Club, 838 Golf Course Road, Deer  
Lodge MT. **406-846-1625**

Madison Meadows Golf Course, 110 Golf Course Road,  
Ennis MT. **406-682-7468**

For more information, call **406-497-6578** or [co.silverbow.  
mt.us/452/Highland-View-Golf-Course](mailto:co.silverbow@mt.us/452/Highland-View-Golf-Course)



**HIGHLAND VIEW**  
— GOLF COURSE —

## HIGHLAND VIEW CLUB HOUSE



Photos by: Ed Heard

With the gracious donation from the Dennis and Phyllis Washington Foundation and Montana Resources. Butte-Silver Bow was able to build the new 5,300 sq.ft Highland View Club House. BSB reached out to the citizens of Butte to help in the naming of the new facility and with a overwhelming response, the final decision was the Jack Crowley Jr Club House. Jack Crowley was a long time Pro at Highland View and was a full time BSB employee.

Highland View has two Trackman Golf Simulators at a cost of \$30 per hour.

Back 9 Restaurant located in the Clubhouse is open 7 days a week. Call **406-497-6479** for more details.

Scan QR Code to view Back 9 Menu







# SUMMER FUN 2025

## CALENDAR OF YOUTH EVENTS



**Summer Meals for children 18 and under! Action Inc. will be providing breakfast and lunch at several sites in Butte during the summer months. For more information, [www.butteassistanceprograms.org](http://www.butteassistanceprograms.org) or call (406) 533-6855**

**Highland View Golf Course, \$2 golf on Monday and Wednesdays for kids 18 and under. Par 3 course only until 4:00 pm. For more information call (406) 497-6578**

### JUNE

- 8-13 Girl Scout Camp: Survival Scientists** (Grades: 2-6), **Mountain Expedition** (Grades: 4-8), **Mining Mania** (Grades: 6-12), [gsmw.org](http://gsmw.org) (252-0488)
- 9-13 YMCA Summer Camp: Core Value Week.** Grades: K-6: 7:30am-6pm, [butteymca.org](http://butteymca.org) (782-1266)
- 11 BSB Highland View Golf Course Junior Golf Camp: Intro to the Game (Hitting, Posture, Grip, Aim).** Ages: 7-9: 9-10:15am, Ages 10-12: 10:30-11:45am, Ages 13-15: 12-1:15pm. (497-6578)
- 15-20 Girl Scout Camp: Super Sleuths** (Grades: 2-6), **Mining Mania** (Grades: 4-8), **Extreme Exploration** (Grades: 6-12), **Leadership Programs** (Grades: 9-12) [gsmw.org](http://gsmw.org) (252-0488)
- 16-19 R.O.C.K.I.E.S.: Got Game** (Grades: K-3), **Rev Up Your STEAM** (Grades: 1-3), **Strong and Healthy Me** (Grades: K-4), **Little Spikers Volleyball Camp** (Grades: K-6). East Middle School, [bsd1.org](http://bsd1.org) (533-2548)
- 16-20 BSB Parks & Rec Skyhawks-Flag Football** M-W & F, Ages 6-12, 9am-12pm or **Flag Football/Swim Combo** 9am-3pm, Stodden Park, [skyhawks.com](http://skyhawks.com) (800-804-3509)
- 16-20 YMCA Summer Camp: Beat the Clock Week.** Grades K-6: 7:30am-6pm [butteymca.org](http://butteymca.org) (782-1266)
- 18 BSB Highland View Golf Course Junior Golf Camp: Posture, Grip, Aim, Putting, Chipping, Short Game.** Ages: 7-9: 9-10:15am, Ages 10-12: 10:30-11:45am, Ages 13-15: 12-1:15pm. (497-6578)
- 18-21 Journey Church: Adventure Camp.** Grades 3-6, [montanastudentministries.com](http://montanastudentministries.com)
- 23-26 R.O.C.K.I.E.S.: Adventures in Art** (Grades: K-2), **Fit and Fun** (Grades: K-6), **Full STEAM Ahead** (Grades: 4-6), **Flag Football** (Grades: K-6). East Middle School, [bsd1.org](http://bsd1.org) (533-2548)
- 23-27 BSB Parks & Rec Skyhawks-Soccer Camp** M-F, Ages 6-12, 9am-12pm or **Soccer/Swim Combo** 9am-3pm, Stodden Park, [skyhawks.com](http://skyhawks.com) (800-804-3509)

- 23-27 YMCA Summer Camp: Safari Week.** Grades: K-6: 7:30am-6pm, [butteymca.org](http://butteymca.org) (782-1266)
- 25 BSB Highland View Golf Course Junior Golf Camp: Irons and Full Swings on course play.** Ages: 7-9: 9-10:15am, Ages 10-12: 10:30-11:45am, Ages 13-15: 12-1:15pm. (497-6578)
- 30-2 YMCA Summer Camp: USA Week.** Grades: K-6: 7:30am-6pm, [butteymca.org](http://butteymca.org) (782-1266)
- 30-3 BSB Parks & Rec Skyhawks-Lacrosse** M-Th, Ages 6-12, 9am-12pm or **Lacrosse/Swim Combo** 9am-3pm, Stodden Park, [skyhawks.com](http://skyhawks.com) (800-804-3509)
- 30-3 R.O.C.K.I.E.S.: Playful Connections** (Grades: K-3), **Magic School AI** (Grades: 3-6), **Pickleball** (Grades: 4-6). East Middle School, [bsd1.org](http://bsd1.org) (533-2548)

### JULY

- 7-10 R.O.C.K.I.E.S.: STEM-tastic** (Grades: 1-3), **Unleash Your Imagination** (Grades: 3-6), **Happy Feelings** (Grades: 4-6). East Middle School, [bsd1.org](http://bsd1.org) (533-2548)
- 7-11 BSB Parks & Rec Skyhawks-Volleyball** M-F, Ages 6-12, 9am-12pm or **Volleyball/Swim Combo** 9am-3pm, Stodden Park, [skyhawks.com](http://skyhawks.com) (800-804-3509)
- 7-11 YMCA Summer Camp: Montana Week.** Grades K-6: 7:30am-6pm, [butteymca.org](http://butteymca.org) (782-1266)
- 14-17 R.O.C.K.I.E.S.: Art Explorers** (Grades: K-2), **Music FUNDamentals** (Grades: K-2), **Mindfulness Minds** (Grades: K-3), **Imagination Station Art** (Grades 3-4), **Tynkering Around: 3D Printing & Robotics** (Grades: 3-6), **Detective Discovery: CSI Edition** (Grades: 4-6). East Middle School, [bsd1.org](http://bsd1.org) (533-2548)
- 14-18 BSB Parks & Rec Skyhawks-Tennis** M-F, Ages 6-12, 9am-12pm or **Tennis/Swim Combo** 9am-3pm, Stodden Park, [skyhawks.com](http://skyhawks.com) (800-804-3509)
- 14-18 YMCA Summer Camp: Build Something Crazy Week.** Grades K-6: 7:30am-6pm, [butteymca.org](http://butteymca.org) (782-1266)

- 14-19 Journey Church: Youth Camp.** Grades 6-12, Glacier Bible Camp at Hungry Horse, MT [montanastudentministries.com](http://montanastudentministries.com)
- 21-24 R.O.C.K.I.E.S.: Music Exploration** (Grades: 2-4), **Art Through the Ages** (Grades: 3-6), **Level Up Minecraft** (Grades: 3-6), **Super Strikers Soccer Camp** (Grades: K-6). East Middle School, [bsd1.org](http://bsd1.org) (533-2548)
- 21-25 BSB Parks & Rec Skyhawks-Multi-Sport (Basketball, Soccer & Volleyball)** M-F, Ages 6-12, 9am-12pm or **Multi-Sport/Swim Combo** 9am-3pm, Stodden Park, [skyhawks.com](http://skyhawks.com) (800-804-3509)
- 21-25 YMCA Summer Camp: STREAMS Week.** Grades K-6: 7:30am-6pm, [butteymca.org](http://butteymca.org) (782-1266)
- 28-1 BSB Parks & Rec Skyhawks-Baseball** M-F, Ages 6-12, 9am-12pm or **Baseball/Swim Combo** 9am-3pm, Stodden Park, [skyhawks.com](http://skyhawks.com) (800-804-3509)
- 28-1 Journey Church: Kids Camp.** Grades 3-6, Glacier Bible Camp at Hungry Horse, MT [montanastudentministries.com](http://montanastudentministries.com)
- 28-1 YMCA Summer Camp: Fair Tale Week.** Grades K-6: 7:30am-6pm, [butteymca.org](http://butteymca.org) (782-1266)

### AUGUST

- 4-8 BSB Parks & Rec Skyhawks-Multi-Sport (Capture the Flag, Dodgeball, Ultimate Frisbee).** M-F, Ages 6-12, 9am-12pm or **Multi-Sport/Swim Combo** 9am-3pm, Stodden Park, [skyhawks.com](http://skyhawks.com) (800-804-3509)
- 4-8 YMCA Summer Camp: Yum Yum Week.** Grades K-6: 7:30am-6pm, [butteymca.org](http://butteymca.org) (782-1266)
- 11-15 YMCA Summer Camp: Challenge the Staff Week.** Grades K-6: 7:30am-6pm, [butteymca.org](http://butteymca.org) (782-1266)
- 18-22 YMCA Summer Camp: Beat the Heat Week.** Grades K-6: 7:30am-6pm, [butteymca.org](http://butteymca.org) (782-1266)



# SUMMER FUN 2025

## YOUTH CLUBS AND ORGANIZATIONS



### B'On The Edge Dance and Tumbling

DeeAnna Worley  
(406) 490-8143

### Colt Anderson Dream Big Foundation

(406) 565-6932  
www.dreambigmontana.com

### Orphan Girl Theater

(406) 782-5657  
www.orphangirl.org

### Big Brothers & Sisters

501 E Front St., Suite 502  
(406) 782-9644  
www.bbbsbutte.org

### Copper City Softball

(406) 490-9824  
www.coppercitysoftball.com

### Ridge Waters Water Park

(406) 497-6585  
www.co.silverbow.mt.us

### Boy Scouts of America-Montana Council

(406) 761-6000

### Copper Sprockets Youth Biking

teamcoppersprockets@gmail.com  
www.bikebutte.org

### Rocky Mountain Martial Arts

Sara Lightner  
(406) 494-2754  
www.rmma-butte.com

### Butte Blizzard LaCrosse

buttelax@gmail.com

### Dynamic Dance and Tumbling Academy (DD&TA)

(406) 498-6270

### Special Olympics

Sherry Rudolph  
(406) 868-9368

### Butte Education Foundation

Susanne Dauenhauer  
(406) 498-3471  
www.butteeducationfoundation.org

### Girl Scouts of Montana

(406) 253-0488  
judys@gsmw.org

### The LionPit of Butte

Bruce Nilson  
(406) 498-7419  
www.lionpitoftbutte.com

### Butte Family YMCA

2975 Washoe St.  
(406) 782-1266  
www.butteymca.org

### Grit Training Center

(406) 565-2873  
www.gritmartialarts.com

### Tiernan Irish Dancers

Cindy Powers or Kerry Powers Hall  
www.tiernanbutte.com

### Butte Miners Junior Baseball

www.facebook.com/  
groups/1719991288474523

### Kiwanis Club-Butte-Silver Bow

Dave Curry  
(406) 723-8067

### Mile High Little League

www.milehighlittleleague.com

### Butte Parks & Trails Foundation

1128 W. Diamond  
www.friendsofstodden.com

### Mining City Dance Company

(406) 491-8485  
www.miningcitydanceco.com

### Butte Soccer Club

Mike Maeser  
(406) 490-8151  
www.miningcityfc.com

### Mining City Little Guy Football

miningcitylittleguyfootball@gmail.com  
www.mclgf.com

### Butte Special Horse Riders

Joani Kissock  
1179 Beacon Rd.  
(406) 490-2612

### Montana Dance Works

(406) 299-2381

### Northwest Little League

Josh Bush  
(406) 240-3903  
www.buttelittleleague.com

### Butte Track and Cross-Country Club

www.facebook.com/buttetrackandcross  
countryclub

If you would like to add a youth and family friendly summer activity or youth club and organization please call (497-6215)





# REGIONAL OUTDOOR OPPORTUNITIES



*Photo by: Steven Cordes*

## BIG HOLE RIVER

Big Hole River – The Big Hole River, a quick 20 minutes south of Butte, is the first choice of any area angler. With its wide variety of hatches and abundance of public access, a skilled angler will have the opportunity to land rainbows, browns, cutties, brookies, Whitefish and the elusive Arctic Grayling.

## JEFFERSON RIVER

One of the three rivers that come together to form the mighty Missouri, the Jefferson River, 30 miles east of Butte is another local favorite. The river travels through one of Montana's most picturesque valleys and can produce some outstanding fishing under the right conditions.

## BEAVERHEAD RIVER

Southwest of Butte and easily accessible via I-15, the Beaverhead River produces more large trout than any other river in Montana.

## GEORGETOWN LAKE

Northwest of Anaconda on the way to Philipsburg, Georgetown Lake offers spectacular views and an abundance of recreation opportunities from water skiing to fishing. Nestled in the scenic Pintler Mountains, Georgetown Lake is a must experience for any visitor.

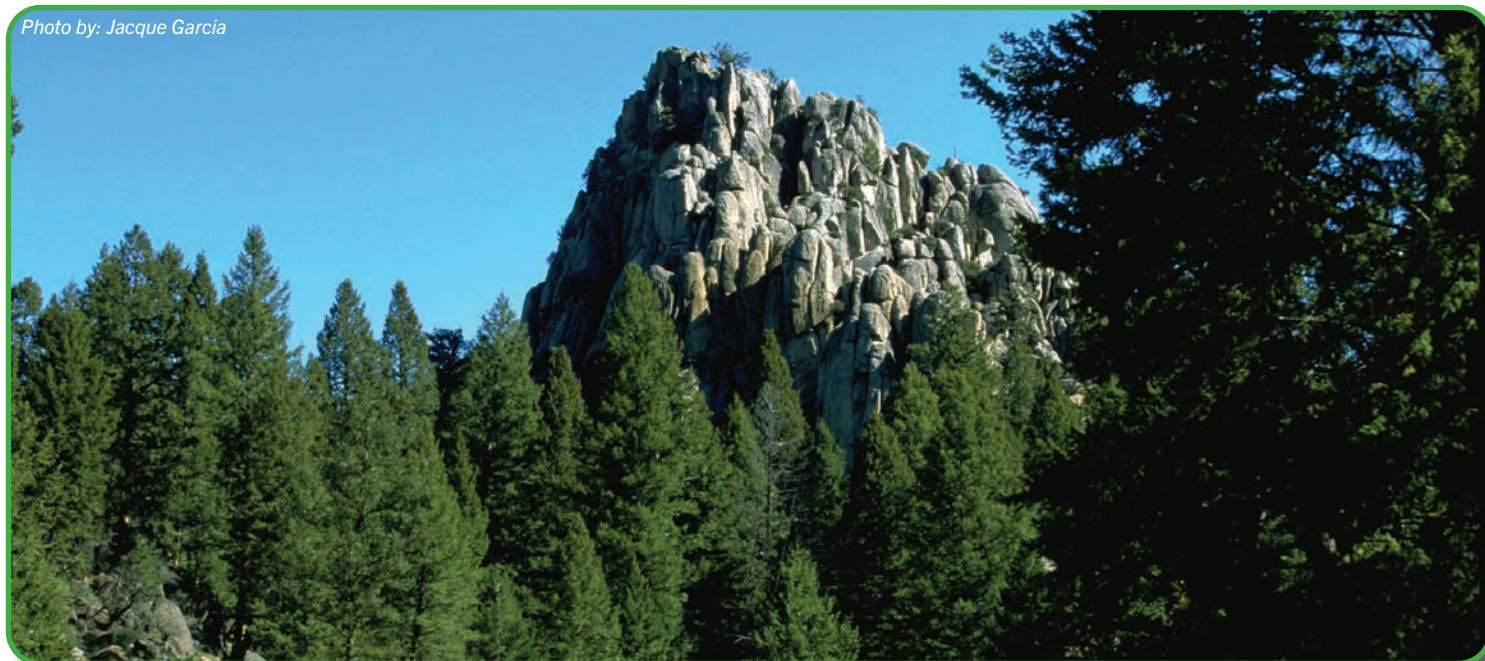
## EAST FORK RESERVOIR

Offers postcard level beauty and seclusion an hour from Butte. A perfect location for an outdoor enthusiast to fish, hike, camp or just revel in Montana's spectacular outdoors.

## FLINT CREEK

Flowing out of Georgetown Lake and located in the Philipsburg Valley, Flint Creek offers a range of fishing and camping opportunities. The fishery is dominated by brown trout, so make sure to swing your flies deep under the frequent cut banks.





## ROCK CREEK

World famous for its unmatched beauty and astounding stonefly hatches, Rock Creek is an anglers' paradise. Meandering between the Sapphire and John Long Mountains, the majority of Rock Creek flows through National Forest land and public access is plentiful. If you enjoy fishing, Rock Creek is a must for your visit.

## HOMESTAKE LAKE RECREATION AREA

Located at the top of Homestake Pass on I-90, just east of Butte, Homestake Lake area offers fishing and great access to trails for hiking, biking and motorized off-road vehicles. This area is designated day-use only and there is no overnight camping allowed.

## CLARK FORK RIVER

One of Montana's most well-known rivers, the Clark Fork was named for famed American explorer William Clark and is the Headwaters of the Columbia River. It flows from below Butte all the way to the Pacific Ocean. There are access opportunities from outside Anaconda stretching west to Missoula and beyond.

## SHEEPSHEAD/MANEY LAKE

20 miles north of Butte on I-15, offering picnicing, fishing, hiking, volleyball courts, horseshoe pits, a one stop shop for a perfect day out. The area is designated day-use only. Pavilion areas can be reserved through the Forest Service. [recreation.gov](http://recreation.gov).

## HUMBUG SPIRES

Located on BLM land in the Humbug Wilderness Study area. This is a popular area for climbers, so listen and look for people climbing. To get there, head south on I-15, take the Moose Creek exit. Turn left off the ramp and drive, under the highway and east, for approximately 3 miles. The trailhead is identified and has toilet facilities.

## SILVER BOW CREEK

After the State of Montana completed an internationally acclaimed environmental restoration of the Silver Bow Creek channel and floodplain, the area now boasts an abundance of recreation opportunities. As the headwaters of the Clark Fork River, the creek offers a rebounding fishery of Native West Slope Cutthroat Trout, a paved trail for walking and biking and numerous picnic facilities.

## BOULDER CREEK

20 minutes north of Butte on I-15, it flows 77 miles southeast to Cardwell where it meets the Jefferson River.



Great Golf under  
the Big Sky!

9 holes • 7 days week  
Sunrise to Sunset • Carts, driving  
range, bar, snack bar and Banquet  
room (available for rent)

**ANACONDA COUNTRY  
CLUB & GOLF COURSE**

1 Country Club Ln, Anaconda, MT • (406) 797-3220





## WARM SPRINGS PONDS

Wildlife Management Area/Warm Springs Creek – 21 miles west of Butte on I-90, this area features abundant hiking, biking, bird hunting, fishing and shooting opportunities. The many ponds are known to produce very large trout and one is designated just for children. Make sure to check your fishing regulations prior to casting a line for further information.

## LEWIS & CLARK CAVERNS

Open all year and offers tours of the cave from May 1 through September 30, with Holiday Tours in December. Activities and amenities include camping, biking, hiking, bird watching, fishing, camp host, RV hookups, and more. [stateparks.mt.gov](http://stateparks.mt.gov)

## LOST CREEK STATE PARK

Located 1.5 miles east of Anaconda on Montana 1, a short hike will allow you to view Lost Creek Falls, cascading over a 50-foot drop while scanning the cliffs above for bighorn sheep, mountain goats and golden eagles. Camping, fishing, picnicking, biking, and hiking are available. [stateparks.mt.gov](http://stateparks.mt.gov)

## SKALKAHO PASS

The Skalkaho Highway is a 45-mile drive that runs between the Bitterroot Valley and the Philipsburg Valley. Highlights of the drive include the Sapphire Mountains, Skalkaho Falls, great views of the Philipsburg Valley and excellent camping.

## HARRISON LAKE

Located one hour east of Butte, boating and fishing may be enjoyed. Harrison Lake Rainbow Trout average between 16" and 19" with larger fish common. With Willow Creek Canyon nearby, fishermen can combine fishing on the lake and great small-stream fly fishing on the same trip.

## PINTLER WILDERNESS AREA

Covering over 158,000 acres, the Anaconda-Pintler Wilderness Area is west of Anaconda and has access from major highways on the east, south and west. It is known for its high, rugged and beautiful mountain scenery, including dozens of alpine lakes, with elevations ranging from 5,100 feet to 10,700 feet. The diversity within the area is astounding, with a mix of cross-country skiing, backpacking, hiking, fishing, and horse packing.

## PIONEER SCENIC BYWAY

This 49-mile route runs from Wise River to Highway 278 west of Dillon transversing the West Pioneers and the East Pioneers and offers unparalleled access to mountain wilderness, remote lakes, hiking, camping, and fishing. Bike riders have the best of both worlds, with a well-paved road traversing mountain country and access to miles of mountain biking opportunities.



## THE COPPERWAY, GREENWAY & BUTTE HERITAGE PARK TRAILS

A network of non-motorized trails links a variety of cultural sites. Other trail networks include Thompson Park and Big Butte that provide natural area opportunities for bird watching and viewing wildlife while providing non-motorized hiking, mountain biking and horseback riding opportunities.

## CONTINENTAL DIVIDE NATIONAL SCENIC TRAILS (CDNST)

4 to 14-mile hikes, from moderate to difficult can be accessed within 30 miles of Butte on the CDNST. This trail, which travels around Butte like a horseshoe, provides panoramic views of distant mountain ranges, forested landscapes, and remnants of historic mining and logging activities that supported Butte's mines.

## WHITETAIL-PIPESTONE (BLM AND FOREST SERVICE)

Challenging trails and great vistas can be found in the Pipestone area between Butte and Whitehall. Off-highway vehicle enthusiasts can find fun and excitement in the 30,000-acre area which boasts more than 100 miles of trails that will provide challenges to novice and experienced riders.

## RINGING ROCKS

This unique geological formation is located in the Pipestone area (take exit 241 off I-90). The rocks in this area chime when tapped lightly with a hammer. However the unique tones of the rocks do not occur when removed from the site. This is an area of critical environmental concern and removing rocks is prohibited.



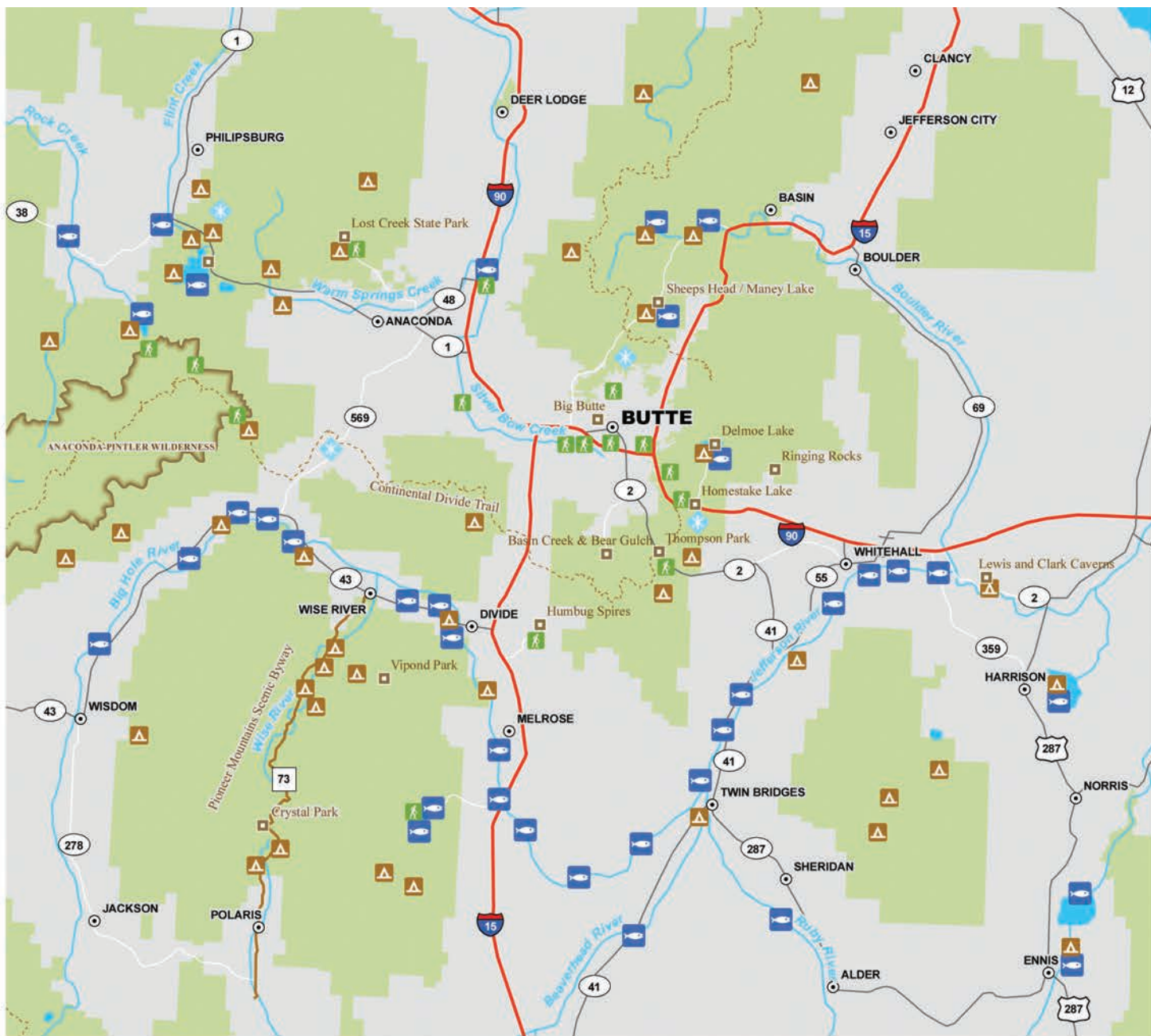
**BUTTE  
MONTANA**  
*WILDLY HISTORIC*

**DISCOVER YOURSELF IN BUTTE, MT —  
WHERE HISTORY, ADVENTURE, AND  
UNFORGETTABLE VIEWS AWAIT!**



#VisitButte [www.Visit.Butte.com](http://www.Visit.Butte.com) #WildlyHistoric





- ⊙ City or Town
- Point of Interest
- ❄ Winter Recreation
- 🐟 Fishing Access
- 🚶 Trailhead
- ⛺ Campground
- Continental Divide Trail
- Pioneer Mountain Scenic Byway
- ~ River
- 🌊 Lake
- 🌿 Federal Land

0 5 10 20 Miles



**Parks & Recreation:**  
[co.silverbow.mt.us/192/Parks-Recreation](https://co.silverbow.mt.us/192/Parks-Recreation)

**Trails & Outdoor Recreation:**  
[co.silverbow.mt.us/454/Trails-Outdoor-Recreation](https://co.silverbow.mt.us/454/Trails-Outdoor-Recreation)  
[avenzamaps.com](https://avenzamaps.com)

**Nearby Hiking & Walking Trails:**  
[visitbutte.com](https://visitbutte.com)

**FishMT:**  
[fwp.mt.gov](https://fwp.mt.gov)

**Butte Cycling Trails:**  
[mapmyride.com/us/butte-mt/](https://mapmyride.com/us/butte-mt/)

**Beaverhead-Deerlodge National Forest:**  
[fs.usda.gov/bdnf](https://fs.usda.gov/bdnf)

[blm.gov](https://blm.gov)  
[fs.fed.us](https://fs.fed.us)  
[stateparks.mt.gov](https://stateparks.mt.gov)  
[visitmontana.com](https://visitmontana.com)





# FESTIVALS & EVENTS

## LUNCH IN THE PARK

Photo by: Ed Heard



**July 2-30:** Butte Parks & Trails Foundation and Butte-Silver Bow Parks and Recreation will be hosting Lunch in the Park at uptown's Emma Park, located at the corner of Silver and Colorado streets. Lunch, music, and activities for the kids will be available from 11:30 AM to 1:30 PM, every Wednesday, from July 2nd through July 30th. As a special event on July 30th, we will host the Butte Symphony for Dinner in the Park from 5:30 PM to 8 PM.

Each event features live entertainment and local food vendors offering a variety of food and snack options. Guests are welcome to bring their own lunch, whether from home or one of the nearby restaurants, and enjoy the entertainment and the warmth of the park. Grab a lawn chair or picnic blanket and join us for a midweek break with coworkers, family, or friends in beautiful uptown Butte. Please visit [lunchinthepark.com](http://lunchinthepark.com) or [friendsofstodden.com](http://friendsofstodden.com) for more information, including a list of food vendors and our entertainment schedule.

## BIG BANG FREEDOM FESTIVAL

Photo by: Joseph Scheller



**July 3-4:** Each July 3, Butte boasts Montana's most spectacular fireworks display. The Big Bang Freedom Festival at Chester Steele Park is an ideal vantage for viewing the breathtaking pyrotechnics. Live music and a variety of vendors promise to keep things lively.

Starting at 10 AM on July 4th, Butte continues the celebration by hosting Montana's best attended parade. Join thousands of other revelers as the grand cavalcade travels south from the Civic Center to Elizabeth Warren Avenue. Last year the parade welcomed more than 100 entries. For more information on participating in this year's parade, contact [parades@butteamericafoundation.org](mailto:parades@butteamericafoundation.org).

## ARTWALK

**May-October:** The summer artwalks occur the first Friday of each month. Several Uptown stores and restaurants will join in the event and stay open on these evenings for the shopping convenience of their customers and to add to the festivities. Visit the facebook page [facebook.com/uptownbutteartwalk](https://facebook.com/uptownbutteartwalk)

## BUTTE FARMER'S MARKET

**May 17-October 4:** The Butte Farmers Market will return for its 24th summer on Saturdays from May 17 through October 4 from 8 am until 1 pm on West Park Street between Dakota and Main. [mainstreetbutte.org/see-do/butte-farmers-market/](http://mainstreetbutte.org/see-do/butte-farmers-market/)

## UPTOWN HOOPS

Photo by: Joseph Scheller



**June 20-22:** 3on3 basketball tournament on 10 different courts at the Original Mine Yard in uptown Butte. Several divisions starting at 4th-5th grade boys & girls to Adult, Co-Ed and Adaptive. Event will also feature a Three Point and Dunk Contest. Contact Keagan McCarthy at 406-498-5393 or visit the website [uptownhoops.com](http://uptownhoops.com)

## COLT ANDERSON DREAM BIG MT

**June 26-27:** Series of events over two days that will include skills camp, speaking engagement and more. There will also be a concert and freestyle motocross event performed by Keith Sayers & Company on June 26th on Park Street in uptown Butte starting at 6pm. [dreambigmontana.com](http://dreambigmontana.com)



## MONTANA FOLK FESTIVAL

Photo by: Joseph Scheller



**July 11-13:** The Montana Folk Festival returns to Uptown Butte for its 13th presentation this July 11, 12, and 13. After three years as the National Folk Festival from 2008-2010, this will be the 16th presentation of this much anticipated summer event.

The festival is a three-day celebration of traditional music, dance, arts and ethnic cuisine. Admission to all is free for all performances and exhibitions.

The festival is one of the largest free of admission outdoor events in the Northwest, attracting well over 150,000 attendees each year from throughout Montana and surrounding states and Canada.

This signature event in the summer season has grown to become a major economic and cultural magnet for Butte and Southwest Montana.

While admission to all performances is free of charge, attendees are encouraged to consider a suggested \$25 contribution each day of the festival weekend or \$35 for families each day to keep the festival free in future years.

In 2025, the festival will include multiple stages featuring the talents of more than 200 artists presenting music and dance performances and moderated talk/demonstration sessions, a Dance Pavilion, a Family Area, a Montana Folklife Area, regional and ethnic foods, and a festival folk arts market and the First Peoples' Market that features the creative works of the region's Native American artists.

The musical lineup, when fully announced, will be available at the festival web site at [montanafolkfestival.com](http://montanafolkfestival.com) and on facebook at [facebook.com/mtfolkfest](https://facebook.com/mtfolkfest). For more details visit: [montanafolkfestival.com](http://montanafolkfestival.com)

## BUTTE 100 MOUNTAIN BIKE RACE



Photo by: Joseph Scheller

**July 19th:** This year on July 19, 2025 will be the 19th Annual Butte 100 Mountain Bike Race.

The Butte 100 is deemed the most difficult mountain bike race in the country: The Butte 100 race consists of three individual races, a 100 mile, 50 mile and the Sorini 25, taking place atop the Continental Divide just outside of Butte, Montana. The race has grown from a small group of dedicated locals on a gravel road, to world-class athletes competing on world-class trails. With outstanding partnerships with the USFS, BLM, community of Butte, our generous sponsors, and the "neon army" of volunteers, the Butte 100 races continue to provide the best mountain bike racing experience possible.

This year we have racers from 20 states, Canada and Australia. Some include Alaska, Florida, West Virginia and Texas. To register or volunteer please go to [butte100.com](http://butte100.com) or call Stephanie at **406-490-7632**

## COUNTY FAIR



Photo provided by the Butte-Silver Bow County Fair

**July 29 - August 2:** "Catch the Fair Bug" at the Butte Civic Center July 29 - August 2! This year's fair will feature great vendors, music, a hypnotist, motorsports, and 4-H exhibits. We will also be adding a "Kids Zone" with different activities each day and "Kids Day at the Fair" on Saturday to highlight some amazing youth organizations and activities in Silver Bow County! Come join us for a fun atmosphere and lots of new activities and catch the fair bug!



## AN RI RA

Photo by: Steven Cordes



**August 9-11:** The 2025 An Rí Rá Montana Irish Festival will take place on August 8th – 10th at the Original Mine Yard. The An Rí Rá has gained recognition in the Irish world as a premier event of Irish culture, music, and dance. The festival features world-class entertainers from all over the United States and Ireland as well as regional Irish performance groups and dancers. The festival this year will be the 21st annual An Rí Rá Montana Irish Festival in Butte. The An Rí Rá Executive Committee and the Montana Gaelic Cultural Society are excited to showcase the world's best Irish music and dance, lectures, workshops, and activities. The festival provides a family-friendly atmosphere that has activities for all ages. There are also many cultural and educational activities that take place during the weekend. The entertainment scheduled for the festival will have performers coming from all over the world, and the festival brings four to five headliner acts each year. The festival grounds will have food vendors, arts & crafts vendors, and a beer garden and other amenities for festival attendees. Come and take part in the most prominent Irish festival in the western United States. The festival is a FREE admission event. For more information, please visit our website at [mtgaelic.org](http://mtgaelic.org) or call **406-498-3983**.

## BIG BROTHERS AND SISTERS OF BUTTE RHYTHM & BREWS



**August 16:** Join Big Brothers and Sisters of Butte at the Original Mine Yard for great music, local brews, car show, food vendors, raffles, 50/50, children's area and more. Admission is FREE! Contact Laci at **406-782-9644** for more information.

## MT SHAKESPEARE IN THE PARK

**September 1:** Montana Shakespeare in the park presents "As You Like It" at Stodden Park, September 1st at 5:30PM. Call for more details. **406-497-6571**.

## CIVIC CENTER EVENTS

The Butte Civic Center is southwest Montana's premier multi-purpose facility. The Butte Civic Center has hosted high profile events, many incredible concerts, and numerous local and national banquets and tradeshow. The arena also hosts events ranging from local high school basketball and wrestling tournaments to mixed martial arts and family shows. The Butte Civic Center's commitment to quality customer service allows the guest's experience to be memorable. Check the Civic Center Website for an updated list of events [butteciviccenter.com](http://butteciviccenter.com)

## SNOFLINGA

**January 30 - February 1, 2026:** Swedish for "snowflake," SNÖFLINGA is a community-sponsored festival and offers FREE and low-cost events for all ages that takes place in and around Butte every January. Participants and spectators alike are encouraged to: Get Outside, Be Active, Enjoy Winter, and Celebrate Community.

Fun winter opportunities during this festival include cross-country skiing, ice skating, fat tire biking, trail running, curling, speed skating, a kid-friendly SNöDay, hockey, Oula, and more! The SouthWestern Polar Plunge delivers another weekend highlight with wild costumes, big splashes, and fundraising for Special Olympians in the Butte, Anaconda, Dillon, and Deer Lodge areas. Watch blocks of ice come to life as ice sculptures and marvel at professional ski/snowboard films at one of our winter-specific cultural events. Visit [snoflinga.org](http://snoflinga.org) for more info.

## ST. PATRICK'S DAY COLOR RUN

Photo by: Meagan Thompson



**March 17, 2026:** Butte Cares in partnership with BSB Parks & Recreation is sponsoring a substance free alternative activity option for the community to participate in on St. Patrick's Day. The event will be held at Stodden Park, consisting of a short 1-mile (fun run), and a separate 5K course within the park. Collaboration with the Spirit of Columbia Gardens Carousel will take place, music, and other activities hosted by students and other community organizations will also be present



# PARADES



## ST. PATRICK'S DAY PARADE

Photo by: Joseph Scheller



St. Patrick's Day Parade, sponsored by the Butte America Foundation. Contact: Alysia Guzman, **406-422-9510**

## 4TH OF JULY PARADE



Photo by Steven Cordes

The Fourth of July Parade, sponsored by the Butte America Foundation Contact Alysia Guzman, **406-422-9510**

## THE CHRISTMAS STROLL

Photo by: Joseph Scheller



The Christmas Stroll on December 5, 2025 is the first activity of the Winter Blast. The Christmas Stroll features a children's light parade, a public appearance by Santa Claus and the official lighting of the uptown lights. Come Uptown for an evening of Christmas Cheer and shopping.

## THE MAI WAH CHINESE NEW YEAR

**February 6, 2026:** 2026 is the "Year of the Red Horse". Described as the shortest, loudest, and coldest parade in Montana, the Mai Wah Chinese New Year Parade snakes through uptown Butte. Follow the dragon as it stops to bless sponsor businesses along the route from the courthouse to the Mai Wah Museum. The parade starts at 3:00pm. Contact David Stonehocker if you would like to have your business blessed. **406-593-1614**



# COMMUNITY PARTNERS

Photo by Joseph Schiller



## COLT ANDERSON DREAM BIG

The Colt Anderson Dream Big Foundation is dedicated to creating positive change for our children by providing resources, innovative opportunities, and experiences that will empower them to “Dream Big” and succeed. Colt, Keelie, and the team motivate our youth to find passions and to “Dream Big”. For more information or to donate go to [dreambigmontana.com](http://dreambigmontana.com)

## BUTTE COMMUNITY FITNESS FOUNDATION

The Butte Community Fitness Foundation promotes accessible and affordable opportunities for everyday exercise and movement for all our citizens, regardless of age or economic status. Part of our mission is organizing Snoflinga, a free community sponsored event celebrating all winter activities available in our area. [Snoflinga.org](http://Snoflinga.org)



## BUTTE SPECIAL RIDERS

Since 1989 Butte Special Riders has provided a therapeutic horseback riding program for children with disabilities. The children are between the ages of 3 and 18, and come from Butte and surrounding counties. Our program serves between 35 to 40 children per year and we hold two riding sessions in June and July on Monday mornings. Volunteers are needed as side walkers or leaders of horses. Experience with horses is not required, and training is provided. Our program is accredited through the Professional Association of Therapeutic Horsemanship International (PATH). Contact Joani Kissock at 406-490-2612 or Barb Gray at 406-490-1715.

## HIGHLANDS CYCLING CLUB

Our mission is to connect the cycling community and sustain trails across South West Montana. Facebook at Highlands Cycling Club – Bike Butte.

Mission Statement: To promote Stodden Park and all parks, recreational lands, and forestry in the community of Butte, Montana and Silver Bow County. [bikebutte.org](http://bikebutte.org)

## BUTTE PARKS & TRAILS FOUNDATION

The Butte Parks and Trails Foundation, formerly the Friends of Stodden Park is a non-government entity of Butte residents that contribute to all of Butte-Silver Bow Parks and Recreation.

The group actively promotes improvements and use of Butte’s extensive parks and trails system. The Foundation was a critical part of the campaign that helped pass the bond that financed Ridge Waters. The group’s commitment to Ridge Waters continues through an annual campaign sponsoring swim passes for children in need to enjoy Ridge Waters on hot summer days.

Successful projects included securing grants to improve access, parking and trails in the Big Butte Open Space Park. The most recent project supported the building and installation of an arch at the Sioux Parks entrance to the Butte, Anaconda & Pacific Trail system. The group will be hosting Lunch in the Park, with live music and food vendors, this July at uptown’s Emma Park.

To help sponsor or donate to the Butte Parks and Trails Foundation, please visit [friendsofstodden.com](http://friendsofstodden.com)



**Butte Parks & Trails**  
FOUNDATION  
Formerly Friends of Stodden Park



## BUTTE-SILVER BOW ANIMAL SHELTER

Summer is the perfect time of year to enjoy the outdoors with your pets! The Butte-Silver Bow Animal Services Department has a few reminders to ensure you, your pet's, and the community's safety.

All dogs residing in Butte-Silver Bow are required to have a current rabies vaccination and county dog license. Licenses are sold at the Animal Shelter and rabies vaccinations can be given by your local veterinarian.

Butte-Silver Bow requires that all dogs be secured on a leash when out for a walk within the BSB fire district. There are trail systems throughout Butte that offer safe and scenic paths that can be enjoyed with your pups as long as they are secured on a leash.

However, if you would like to enjoy some off leash time with your dog, Skyline Park offers several secure "off leash" areas within the park. Please keep your dog leashed at the park until you are securely in the off leash area. Thompson Park is another beautiful space that allows dogs to be off leash under supervision. As for the other parks in Butte, dogs are not permitted to be in these parks.

Last, if you are attending the festivals in town, remember dogs are not allowed at these events, so please leave them home where they are comfortable and safe.

If you have any questions or concerns regarding animals, please contact the Butte-Silver Bow Animal Services Department at **406-497-6525**.

Thank you for keeping your pets safe and happy. Hope you have a great summer!

## BACK COUNTRY HORSEMEN OF MT



Photo by: Jacque Garcia

Mile High Back Country Horsemen is the local chapter in Butte. The club works to perpetuate the common sense use and enjoyment of horses in the backcountry. Members have worked with land management agencies to clear trails and assist with management of noxious weeds along with additional non-profit organizations. <https://bchmt.org/wp/mhbch/>

## BUTTE SCHOOL DISTRICT #1

Butte School District #1 is made up of six elementary schools, East Middle School, and Butte High School.

For information about any clubs or activities, whether during the school year or during the summer, contact the Butte School District #1 office at **406-533-2548**.

## BUTTE CENTRAL SCHOOLS

Butte Central Catholic Schools offers elementary, middle school and high school opportunities.

For high school athletics/activities, call **406-782-8084**.

For junior high athletics/activities, call **406-782-4500**.

## RAMSAY SCHOOL

Located 10 miles west of Butte, Ramsay School serves kindergarten through eighth grade students.

For information on programs, call **406-782-5470**.

## MONTANA TECHNOLOGICAL UNIVERSITY

Photo by: Joseph Scheller



Look no further than Montana Technological University for a great college atmosphere, and an education that the Princeton Review lists as one of the best among undergraduate institutions education. Wall Street Journal cites Montana Technological University as a Top 10 return on Investment for Public Colleges and SmartAsset ranks Montana Tech as the best value college in Montana, and number 18 in the country.

Montana Technological University has 13 campus buildings and offers over 70 undergraduate degrees along with 18 minors, 14 certification degrees and 10 professional career programs. Tech also offers 21 graduate degrees and a Ph. D. in Materials Science. [mtech.edu](http://mtech.edu)

## BUTTE-SILVER BOW PUBLIC LIBRARY

**June-July:** June-July: Summer Reading at the Library for 2025 is "Color Your World". Programs will run on Thursdays in June & July at 2pm! Please check our calendar for more details. This year we have Teen Summer Reading Bingo. We also have First Fridays, Memoir Writing, Chess Club, Loosely Knit club, Butte Seed Library, Friday Storytimes, Chess Club, Family movie matinees, and art in the Carle Gallery, and so much more! Call **406-792-1080** or visit [buttepubliclibrary.info](http://buttepubliclibrary.info) for more information!



## MINING CITY FC

Provided Photo



Mining City FC strives to:

- Develop skilled, confident, and creative players
- Make the game fun in practice and play
- Teach good sportsmanship and respect for all
- Value competition but not more than character & performance
- Provide a safe & educational experience through guided discovery coaching

The spring travel season starts the beginning of April and runs through the middle of June for ages 10-18. Younger players, 6-10, can join the Academy program which runs from May 1 to mid-June and does not involve travel. Fall travel and Academy seasons will run from Labor Day to Mid-October. Travel games are held around the state on Saturdays and wrap up with an end of the season tournament. Being a volunteer organization, we rely on volunteer coaches, referees, team managers, etc.

To register or for more information please contact: Mike Maesar at **406-490-8151** or [mimaesar@hotmail.com](mailto:mimaesar@hotmail.com). You can also visit our website at [miningcityfc.com](http://miningcityfc.com) or follow us on Facebook and Instagram at [minincityfc](https://www.instagram.com/minincityfc)

## WOMEN'S FLAT TRACT DERBY ASSOC.



Photo by: Joseph Scheller

The Copper City Queens is Butte's own Roller Derby team. We have been representing Butte, Whitehall, Anaconda and Deer Lodge for the past 10 years. We are about meeting new people, serving our community, learning to skate & to play roller derby. Most of all, having fun! At anytime you can stop by a practice and check us out. Please reach out & follow us. We would love to meet you!

For additional information go to: [coppercityqueens.com](http://coppercityqueens.com) or email them at: [coppercityqueensrollerderby@yahoo.com](mailto:coppercityqueensrollerderby@yahoo.com)

## ★★ SECOND EDITION BOOKS

Second Edition Books sells used and rare books in **Historic Uptown Butte**. We specialize in Montana, mining, Western Americana, children's books & more. Visit us at **112 S. Montana** or call the store at **406-723-5108**

"MONTANA'S BEST USED BOOKSTORE"

MON - SAT | 9:00 - 5:30

[SecondEditionBooksButte.com](http://SecondEditionBooksButte.com)



# WELCOME TO THE WORLD MUSEUM OF MINING

Where History Tells A Story

## 66+ EXHIBITS & UNDERGROUND MINE TOURS



## BUTTE MONTANA



## AN ENTIRE WORLD OF MINING HISTORY

TICKETS & MORE AT  
*MiningMuseum.org*



\*DATES & HOURS SUBJECT TO CHANGE. VISIT WEBSITE FOR CURRENT INFORMATION.



## BUTTE PICKLEBALL



Pickleball is the fastest growing sport in America. It has similarities to both tennis and table tennis. From spring to fall, play is offered at three outside locations, Whittier School, Father Sheehan, and Stodden Park. Winter play is available in the mornings and evenings at the Civic Center Annex. Visitors and beginners are always welcome and we offer to schedule lessons upon request. Go to our site for all Butte Pickleball action.

## CAR CLUBS



### Copper City Gear Jammers.

The mission of the Copper City Gear Jammers is to promote the sport and hobby of owning, altering and building classic cars, hot rods and custom cars. We encourage family participation, promote friendship and help fellow clubs and organizations by attending their functions. Brody Hackman,

**406-498-8840, bhfabrications1@gmail.com**

### Pioneer Street Rods

The purpose of the Pioneer Street Rods is to bring together people who own or are interested in owning, restoring and showing street rods and classic cars. The Pioneer Street Rods is a proud sponsor of Wednesday Night Cruise Nights which are hosted at different locations in the area throughout the summer. For information call Jim Ayers, **406-593-7817.**

## DANCE GROUPS & WORKSHOPS

### Mining City Dance Company

406-491-8485  
miningcitydanceco.com

### Dynamic Dance Company

406-498-6270  
dynamicdanceco.com

### 5678 Dance

406-490-4980  
5678dancebutte.com  
Adults Only

### Montana Dance Works

406-299-2381  
montanadanceworks.com

### B'On The Edge Dance and Tumbling

406-490-8143  
facebook.com/p/BOn-The-Edge-Dance-and-Tumbling-100063769951114/

### Tiernan Dance-Cindy Powers

406-494-1203  
tiernanbutte.com

## GEORGE GRANT CHAPTER OF TROUT UNLIMITED



The mission of the George Grant Chapter of Trout Unlimited is to preserve, protect and restore the wild trout fisheries of Southwest Montana. We are proud to call the Big Hole River, Beaverhead River, Jefferson River, and the upper Clark Fork River, along with Georgetown Lake our home waters. Headquartered in Butte, Montana, we pride ourselves on being a conservation organization representing the interests of anglers. We work closely with local Montana Fish, Wildlife and Parks Fisheries Biologists to improve fisheries throughout our area and to look for project opportunities. Roy Morris, **406-491-4255** Mark Thompson, **406-593-1058** or Forest Jay, **406-565-1623** or email at **president@ggtu.org**



## MILE HIGH NORDIC SKI EDUCATION FOUNDATION

The Mile High Nordic Ski Education Foundation is an all-volunteer group that maintains ski trails near Butte and Anaconda. The foundation and Homestake Lodge provides coaches for all levels and rental equipment is available at Homestake Lodge for the season.

Younger skiers focus on classic technique and getting comfortable on skis while playing games and learning basic skills. Older skiers add skate skiing to their practices. There are also opportunities for those who want to race.

For programs and events go to [milehighnordic.org](http://milehighnordic.org)

## MINING CITY DISC GOLF



Photo by: Lukas Prinos

Mining City Disc Golf Club represents the growing sport of disc golf in Butte. MCDG holds weekly league events as well as hosts tournaments and other competitive events that attract players from all over Montana. As MCDG continues into the future, we will further our mission of "Growing the Sport" with community involvement, improving existing courses, hosting benefit and fundraising events, and hosting special clinics that introduce new players to one of the fastest growing sports in the world.

Find Mining City Disc Golf Club on:

Facebook: [facebook.com/MiningCityDiscGolfClub](https://facebook.com/MiningCityDiscGolfClub)

Twitter: @MiningCityDGC

Email: [miningcitydgc@gmail.com](mailto:miningcitydgc@gmail.com)

Information 406-497-6535

## SILVER BOW COUNTY 4-H

4-H is the largest out-of-school youth organization in the country, and available right here in Butte-Silver Bow! With close to 100 members, 30 certified volunteers, and lots of projects, there is something for everyone. Our fastest growing project in the county include shooting sports, STEM, and the arts. Our clubs and county programs focus on community service, leadership, and recreation along with the learning components of the projects. We also host a 4-H camp each summer, participate in the Butte-Silver Bow County Fair, and provide lots of opportunities to get involved. For more information, contact MSU Extension agent Kellie Kahtani and 406-723-0217 or [kellie.kahtani@montana.edu](mailto:kellie.kahtani@montana.edu)

## RUNNING CLUBS



Photo by: Joseph Scheller

The P & M Runners are a loosely organized group of avid runners of all ages. The group maintains an e-mail list with more than 100 members, who receive updates on local races and group run opportunities. The group runs are generally on Tuesday evenings and Saturday mornings. Distances and terrain vary as the group incorporates trails and roads. The events the club hosts are organized entirely by volunteers, and the proceeds are returned to the Butte area trail system and various not for profit agencies.

The P and M Runners are pivotal in organizing the Wulfman's Continental Divide National Scenic Trail 14k trail race. The 14 "Butte-iful" kilometers are run along the CDNST between Montana's Homestake and Pipestone passes in Beaverhead-Deerlodge National Forest.

This race along that route celebrates the trail and the memory of one of its greatest local proponents – the late John Wulf, "the Wulfman," who was the godfather of Butte's Piss and Moan Runners. The race is run on Summer Solstice Saturday, the anniversary of the Wulfman's last group run. Race proceeds are used to help build and improve trails in Southwest Montana. This year's race is Saturday, June 21, 2025. Other events include the Wulfman's Frigid Digger Run held in February. For more information, visit [buttepissandmoanrunners.com](http://buttepissandmoanrunners.com) or contact the club on Facebook.



## WORLD MUSEUM OF MINING

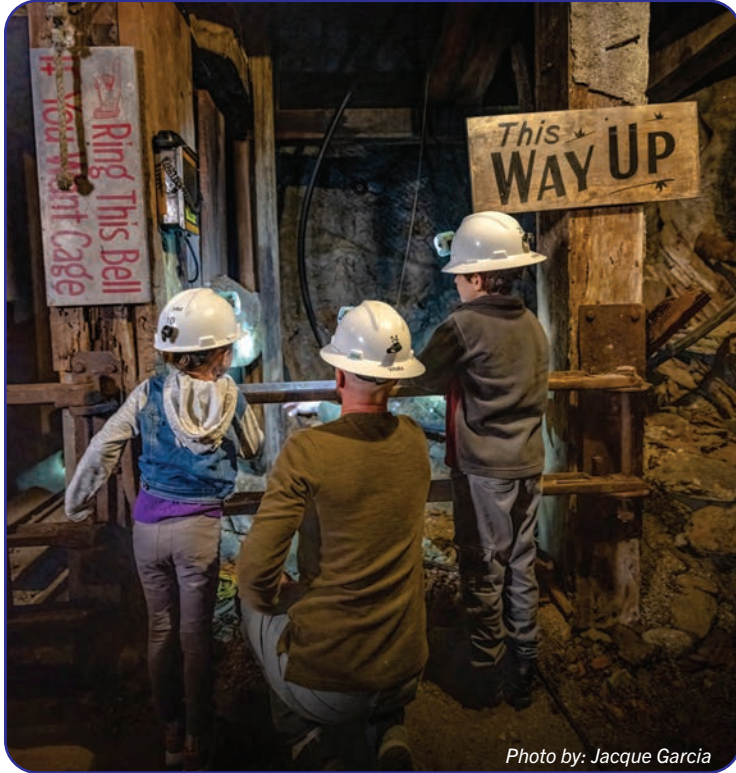


Photo by: Jacque Garcia

The World Museum of Mining was founded in 1963. Butte experienced a century of hard-rock mining and earned the reputation of being home to one of the world's most productive copper mines of all time. The Museum exists to preserve the enduring history of Butte and the legacy of its rich mining and cultural heritage.

The World Museum of Mining is one of the few museums in the world located on an actual mine yard, the Orphan Girl Mine. With 50 exhibit buildings, countless artifacts, and 66 primary exhibits in the mine yard.

By walking the streets of Hell Roarin' Gulch and venturing to the depths of the Orphan Girl Mine, you can almost see the miner's blackened faces and hear their exhausted sighs at the conclusion of the work day!

**406-723-7211** or [miningmuseum.org](http://miningmuseum.org)

## ABILITY MT

Ability MT is dedicated to providing inclusive and adaptive recreational services to individuals of all disabilities. We believe that everyone should have the opportunity to participate in recreational activities and enjoy the benefits of staying active and engaged. Our programs are designed to be accessible and accommodating, ensuring that all participants can fully enjoy and benefit from their experiences. If you or someone you know is interested in our adaptive recreation services, please don't hesitate to reach out to us for more information at [abilitymt.org](http://abilitymt.org).

## SCIENCE MINE



Photo by: Meagan Thompson

The Science Mine in Butte, Montana, is an interactive science center designed to spark curiosity and excitement about science, technology, engineering, and math (STEM). Located in historic Uptown Butte, it offers hands-on exhibits and activities for visitors of all ages, from exploring electricity and magnetism to learning about the unique geography of the region. The Science Mine also hosts Mining City Family Science Nights, special events that introduce families to some of the region's unique science assets, blending hands-on learning with the area's rich scientific and mining heritage. Housed in a historic building, it's a vibrant destination for families, students, and science enthusiasts alike. The Science Mine is open Saturdays 10am to 2pm. Contact the Science Mine at **406-992-4208** or [sciencemine.com](http://sciencemine.com)



**VOTED BEST GIFT STORE TWO YEARS IN A ROW!**

- Talavera Pottery From Mexico
- Unique Gifts
- Gourmet Items
- Seasonal Items
- Jewelry
- Clothing
- Candles
- African Baskets
- Refurbished Antiques
- Home Décor

22 W Park St, Butte, MT 59701

**Open daily • Mon-Sat 10am-5pm • Sundays 11am-4pm**



# COME RIDE THE CAROUSEL

Every Thursday This Summer

## KIDS RIDE FREE



**Schedule Your Event Here**

**Snack Bar & Gift Shop**

**406.494.7775**



# WINTER RECREATION

Photo by: Josie Trudgeon Photography



Butte and Silver Bow County is not just for summertime recreation. We also have unmatched winter recreation opportunities. From local parks being converted to ice rinks, to world-class downhill and cross country skiing, we get outside year round.

## SNOFLINGA

SnoFlinga: Montana's Winter Festival, is a celebration of everything winter. This community-sponsored event takes place in January. Events include Nordic skiing, ice skating, sledding, curling, snowshoeing, CrossFit, fat biking, a rail jam, skijoring and more. The festival takes advantage of the best facilities that Butte has to offer, such as Homestake Lodge, the High Altitude Skating Center, Foreman's Park, the Community Ice Center, Skyline Park and our extensive urban trail system. This is a free event and everyone is encouraged to participate. Live music, vendors and much more will be on hand throughout the weekend. Visit [snoflinga.org](http://snoflinga.org)



Photo by: Lyndsay Alt

## ICE RINKS

During the winter months, Parks and Recreation maintains ice skating rinks at the following locations:

- **Clark Park** (lighted): The Clark Park ice rink is at the intersection of Wall Street and Texas Avenue, just east of the Community Ice Center.
- **North Main at Mullin Street.**
- **Racetrack Park** (lighted): The Racetrack Park ice rink is just south of the Racetrack fire hall on Farragut and Grand avenues.
- **People's Park at Silver and Girard Streets** (lighted): The People's Park ice rink is at the intersection of Silver and Girard Streets, one block west of Excelsior Avenue.
- **Stodden Park Skating Ribbon**
- **High Altitude Oval:** This ice rink is on Olympic Way off of Continental Drive, a former High Altitude Olympics training site, rentals are available and there is a small fee of \$2. Contact Dave Silk at **406-494-4018** or [davidwsilk@hotmail.com](mailto:davidwsilk@hotmail.com)
- **Ramsay Skating Rink:** The Ramsay Rink is located on Laird Street.



## CROSS COUNTRY SKIING

**MT. Haggin:** Mile High Nordic Ski Club, in cooperation with the Montana Fish, Wildlife and Parks and the Bureau of Land Management, has established and maintains nearly 28 kilometers of groomed cross country ski trails. The Mount Haggin Trails are located on Mill Creek Highway (MT 569) 11 miles south of Highway 1, near Anaconda.

**Moulton:** Cross-country ski trails are located north of Butte in the Moulton area and are groomed for moderate and more difficult ski opportunities. 15 km of trails are open January 1 through April 1 and are groomed in cooperation with the Mile High Nordic Ski Club. Go to [milehighnordic.org](http://milehighnordic.org) for info on Mount Haggin and the Moulton trails. A map of the trails is available at the Butte Ranger District office.

**Homestake Lodge:** Located on I-90 on Homestake Pass, Homestake Lodge offers 35km of pristine fully groomed trails, as well of a 2km lighted ski loop. The lodge has a ski shop, kitchen, great room, couches, tables, bathrooms, and bunk rooms. [homestakelodge.com](http://homestakelodge.com)

**Thompson Park groomed fat tire bike trails:** Enjoy your fat bike on the groomed trails at the following Thompson Park Trails.

John Gulch Trail, Eagles Nest Trail, Milwaukee Road from Sagebrush Flats to the first tunnel, Grading Camp Trail from Herman Gulch to Milwaukee Road, Herman Gulch Trail to the junction of Grading Camp.

## SNOWMOBILE

The Mining City Trail Riders, in cooperation with the Forest Service and Montana Fish, Wildlife, and Parks, grooms approximately 35 miles of trails in the Elk Park area. The trail system connects with other groomed trails on the Pintler Ranger District. Maps of the trails are available at the Butte Ranger District office.

## WINTER BLAST

Montana Standard File Photo



The 2025 Winter Blast will run from December 5th (Christmas Stroll) through December 13th. There will be an Ice Sculpting Contest with other activities to be announced.

## DOWNHILL SKIING



Photo By: Tom Bauer

**Discovery Ski Area:** Discovery Ski Area is near Philipsburg on Highway 1, and is situated along the Pintler Scenic Route opposite of Georgetown Lake and is easily accessed from Butte, Missoula and Helena. Discovery's three faces offer different terrain for every skier. During the summer months enjoy Discovery Bike Park from June 18th through October. [skidiscovery.com](http://skidiscovery.com)

## SANTA'S CALLING

Photo by: Joseph Scheller



Coming in December: The Butte Silver-Bow Parks and Recreation Department and Candy Kane Communications have teamed up to connect a direct line to Santa Claus at the North Pole. Let Santa contact your little ones (ages 3-10 years) with a personal phone call. **406-497-6571**



# HOW CAN YOU AMPLIFY YOUR BUSINESS?

Working with a Marketing Agency has  
numerous benefits.

It allows you to prioritize what truly  
matters - **your clients.**



Partnering with Amplified enables you to maximize your marketing efforts  
and achieve results that propel your business to new heights of success.

**GET A FREE MARKETING ANALYSIS**

[amplifieddigitalagency.com](https://amplifieddigitalagency.com)







# Healthy Living For A Healthy Community

**Aquatics Center:** 8 lane lap pool, hot tub and zero depth entry leisure and family pool areas with water slide and other fun features.

Swim Lessons, Water Safety classes, Lap swim, Water Aerobics, Open Swim, Water Slide and Community swim days.

**Healthy Living:** Fitness center with treadmills, cross trainers, life cycles, circuit training, free weights, medical exercise support and personal training.

Group Exercise classes are included with membership! Just to name a few...

Water aerobics, Cross training, Yoga, Pilates, Core & Floor, Sit & Be Fit, Just Dance, Water Walking, Line Dancing, Easy Does It and many more.

**Youth Development:** Afterschool, Summer Camp, Active Teens. Sports programming: Basketball, Soccer, Volleyball, Lacrosse Camp, Flag Football and Riptides Swim Team.

**Social Responsibility:** Fritz Apostel 3rd Grade Water Safety, Active Teens, Healthy Kids Day, Pumpkin Swim & More! Volunteer opportunities: youth sports coaching and more!

**Butte Family YMCA**  
2975 Washoe Street  
Butte, MT 59701  
406.782.1266

**Hours**  
M-F 5:00a - 9:00p  
Sat. 8:00a - 6:00p  
Sun. 12:00p - 6:00p

Contact our Welcome Center or go to our website for more information about membership, daily fees or programs.



[www.butteymca.org](http://www.butteymca.org)





# For sudden sprains and peace of mind.

**Fast, expert, walk-in care.**

## Walk-in Care Available in Butte

**When care can't wait, visit us.**

The most common reasons to visit our Walk-in Clinic include:

- Sprains and strains
- Cuts and scrapes
- Earache or sinus pain
- Fevers, flu or cold symptoms



**Scan the code to learn more**



**Butte Flats Walk-in Care**  
3636 Harrison Avenue | Butte, MT 59701  
Monday - Saturday | 7:30 a.m. - 7:00 p.m.  
Holidays from 9:00 a.m. - 4:00 p.m.  
406-496-3600 | [intermountainhealth.org/walkin](https://intermountainhealth.org/walkin)