

Butte-Silver Bow Parks & Recreation Activity Guide 2019



Brought
to you by





TownPump.com



**MONTANA
COMMUNITIES
ARE THE HEART
OF WHO WE ARE**



The All-New 2019 RAV4

Leave your comfort zone
in comfort with a smooth ride.



\$25,500
Starting MSRP



CAPABLE PERFORMANCE

Underneath RAV4's rugged good looks is the potential of where you can go, on- or off-road.

INSPIRING DESIGN

One unmistakable spirit, multiple distinct versions. RAV4 brings a new level of refinement that's sure to impress wherever you go.



SMART SAFETY

RAV4's updated Toyota Safety Sense™ 2.0 (TSS 2.0) 42 plus Star Safety System™ work together to help protect you and your passengers.



The all-new 3-row
2019 Subaru Ascent™

THE SUBARU
MORE 2 LOVE

LAUNCH CELEBRATION

- Standard Symmetrical AWD + SUBARU BOXER® engine
- 8.7 Inches of Ground Clearance and X-MODE®
- 5,000-Lb. Towing Capacity
- High-Strength Steel Body Structure
- Panoramic Moonroof
- STARLINK™ Entertainment Anywhere



THE BIGGEST SUBARU EVER

With flexible seating for up to 8-passengers, the family-sized 2019 Ascent make every day an adventure.

SPACIOUS & COMFORTABLE

Extra-wide rear door openings let your passengers enter and exit with ease. Plus, you get ample underfloor cargo space.



POWER REAR GATE

The available Power Rear Gate can be opened or closed with the push of a button on your key fob, by controls on your dashboard or the gate itself.

Most Complete Service Inspections. All Makes- All Models • Oil Changes - No Appointment Needed!



Butte Toyota

5103 Harrison Ave., Butte, MT
(406) 782-9181 | ButteToyota.com



Butte Subaru

3801 Harrison Ave., Butte, MT
(406) 464-7076 | ButteSubaru.com

OUR MISSION

The Butte-Silver Bow Parks and Recreation Department is committed to improving our community's health, stability, beauty, and quality of life by providing outstanding parks, trails, recreational facilities and leisure opportunities for all of our citizens.

Butte-Silver Bow Parks & Recreation at a glance:

- More than two dozen parks (many with pavilions that can be reserved), numerous playgrounds, a 9 hole regulation golf course, a par-3 golf course, two disc golf courses, a splash pad, and a wading pool
- Ridge Waters: A family water park featuring two water slides, a lazy river, a zero depth entry children's area, a climbing wall, a diving board, swimming lanes, rentable cabanas, and a concession stand
- A new destination playground at Stodden Park
- An extensive urban and rural trail system
- Thompson Park: The only dually managed municipal/National Forest Service park in the nation
- Adult and youth programming, which include: volleyball, softball and pickleball and more
- Two historic mine yards that are now event facilities
- Community-wide special events



We're on the web!

butteparksandrec.com

ridgewaters.com

highlandviewgolf.com

Find us on Facebook, Twitter and Instagram!



@ButteParks @ButteSilverBow @ButteParksandRec



On the cover:

Kids Enjoy Ridge Waters in Stodden Park. Picture by Meagan Thompson

This publication is brought to you in conjunction with

The MONTANA STANDARD
mtstandard.com

CONTENTS

Parks & Recreation Fast Facts...	Page 6
Ridge Waters...	Page 8
Stodden Park...	Page 10
Popular Urban Parks...	Page 11
Recreation Facilities...	Page 14
Mine Yards...	Page 16
Rural Parks & Recreation Near Butte...	Page 18
Butte Open Space Map...	Page 18
Thompson Park Map...	Page 21
Butte Urban Map...	Page 22
Highland View Golf Course...	Page 23
Summer Fun Youth Events...	Page 25
Youth Organizations...	Page 26
Regional Outdoor Opportunities...	Page 27
Rural Area Map...	Page 31
Festivals & Special Events...	Page 32
Parades...	Page 36
Community Partners...	Page 37
Winter Recreation...	Page 43



A NOTE FROM THE DIRECTOR

Dear Friends, Neighbors and Visitors,

If you're already a part of our community, Thank You -- or simply thinking about a visit -- please do. You won't be disappointed!

Butte is in the heart of Montana, situated between Glacier and Yellowstone Park. Our Parks and Recreation Department is taking care of some world-class recreation amenities right here in Butte-Silver Bow. As we gear up for an exciting 2019 Spring, Summer & Fall, we invite you to explore our community. Our recreational opportunities continue to grow and the excitement around these facilities, festivals, parks and activities can be seen and felt throughout the community and state.

The Summer of 2019 will continue to have traditional summer fun and festivals, and we continue to add exciting new opportunities for the citizens of Butte-Silver Bow and visitors to our community.

The second season of Ridge Waters will be opening on June 8th of 2019, Butte's very own public water park located in Stodden Park. Stodden Park will also be showcasing the new additions to the Park. These include a new Plaza Area between Ridge Waters and the Spirit of the Columbia Gardens Carousel, a million-dollar all ability playground, a new pond on the golf course, new multi-purpose tennis court with basketball hoops and pickleball courts, a new pavilion, and an additional entry into Stodden Park off Rowe Road. Stodden will be open all summer with a Grand Opening Celebration slated for the third week of June.

Although we are extremely proud of the new addition to Stodden Park, it is just a drop in the bucket of the recreational opportunities we have in Butte -- Silver Bow and Southwestern Montana.

Recreation means something different to everyone, and luckily, we have something for everybody, from your arm chair quarterback to the most extreme athlete. The festival city will again host the Montana Folk Festival, An Ri Ra Irish Festival, Covellite Film Festival, Butte-toberfest, 3rd of July Fireworks and activities including a concert at the Original Mine Yard, the 4th of July Parade, Music on Main on Thursday Nights, and numerous other fun filled activities for the whole family.

Recreational opportunities are offered during every season. These year-round recreational activities include hiking, biking, rock climbing, fishing, camping, boating, skiing, snowmobiling, ice fishing, motorcycle and ATV riding, and so much more. These opportunities make Butte-Silver Bow and Southwest Montana a very diverse and unique community that distinguishes us from other communities.

If you love to fish, you have come to the right community. Children can learn to fish at our Skyline Park Children's Pond. Once the kids learn these skills you can take them to the many Blue-Ribbon Lakes, Rivers & Streams, that are only a short drive away from Butte.

It doesn't matter what you are looking for, we have it, walk for exercise, play sports, spectate at an event, or just socialize with friends at one of our amazing festivals.

Come out and enjoy our wonderful recreational opportunities. Butte-Silver Bow is an exciting place to stay and play.

Sincerely,
J.P. Gallagher
Butte-Silver Bow Parks and Recreation Director

Thank you to the following

Butte Silver-Bow Parks and Recreation would like to thank the following for making this guide possible. It was a collaborative effort between the County Superintendent of Schools and their Summer Fun Flyer, St. James Healthcare and The Montana Standard.

Butte-Silver Bow Parks and Recreation Department



butteparksandrec.com
ridgewaters.com
highlandviewgolf.com

Director

J.P. Gallagher
406-497-6571
jgallagher@bsb.mt.gov

Recreation Programming and Special Events Coordination

Bob Lazzari
406-497-6535
blazzari@bsb.mt.gov

Parks Superintendent

Pete Schonsberg
406-497-6408
pschonsberg@bsb.mt.gov

Cemetery Director

Susan Maloney
406-497-6228
smaloney@bsb.mt.gov

Highland View Golf Course and Ridge Waters Manager

Mark Fisher
Highland View:
406-497-6578
Ridge Waters:
406-497-6584
mfisher@bsb.mt.gov
highlandviewgolf.com
ridgewaters.com

Parks & Recreation Department **FAST FACTS**

Recreation

- **23** Baseball/Softball Fields
- **20** Horseshoe Pits
- **14** Sports Courts
- **8** Ice Rinks
- **7** Soccer Fields
- **4** Volleyball Courts
- **3** Little Guy Football Fields
- **2** Folf Courses
- **1** Skating Ribbon
- **1** Nine Hole Golf Course
- **1** Park Three Golf Course

- 99** Picnic Tables
- 24** Public Rest Rooms
- 24** Swing Sets
- 1** Fishing Pond

Parks & Trails

45
Developed Parks

60
Miles of Trails
App. 27.5 miles paved

340
Acres of Developed Parkland

4100
Acres of Open Space

4200+
Trees
boulevards, parks, golf courses

- 1** Splash Pad
- 1** Wading Pool
- 1** Water Park

Special Events

Art Walk	County Fair
Butte Farmer's Market	An Ri Ra
Outdoor Movies	Butte-toberfest
Music on Main	Civic Center Winter Bazaar
Covellite International	Christmas Stroll
Film Festival	Ice Sculpting Contest
Colt Anderson's Dream Big Foundation	Snoflinga
Big Bang Freedom Festival	EBP Bull Riding
Montana Folk Festival	Mai Wah Chinese New Year Parade
Butte 100 Mountain Bike Race	St. Patrick's Day

In 2018, Ridge Waters served....

270+
Cabana Rentals

Over 50% were people outside of Butte-Silver Bow

100+
Pizza Parties

37,000
Guests Admitted

6000
Beverages

5381
Pretzels

3030
Nachos

2500
Pizzas

2400
Slushies

1521
Hotdogs

Ridge Waters requires 400,000 gallons of water heated at 85 degrees Fahrenheit to keep the awesomeness going

Parks & Recreation Board Members

Philip Borup
Shawn Fredrickson
Chuck Merrifield
Zac Sexton
Cathy Tutty



Keeping your **TEETH IN LINE.**



ORTHODONTICS FOR CHILDREN & ADULTS

ANDREWS

Orthodontics

ORTHODONTIC SPECIALIST

Living & Practicing In Butte



*Child, Teen & Adult Orthodontics
Clear Porcelain Braces
Digital X-Rays TMJ Treatments
Certified Invisalign® Provider*

**Office Open
Monday-Friday
Accepting New Patients
No Referral Necessary**

1405 Dewey
Butte, MT 59701
406-494-8866
www.AndrewsOrthodontics.com

RIDGE WATERS



Ridge Waters is Montana's newest family water park. This state of the art facility features two water slides, lazy river, zero depth children's area with interactive play features, a diving board, climbing wall, swimming lanes, and more. The fun will extend out of the water as well with ample deck and green space, a concession stand with outdoor seating and cabanas.

- Address: 3103 South Utah.
Phone: **497-6584**
Website: **ridgewaters.com**
- Hours: Ridge Waters will be open from June 8th through Labor Day weekend, from 12pm- 6:45pm for the general public
Lap swimming and water walking in the lazy river will be open from June 10th through August 25th from 9:30am to 11:30am, 7 days and a week.

- When in the pool, children under 4 years old must be accompanied by an adult.
- **No outside food, drinks, or coolers are allowed**
- No inflatables are allowed. Inner tubes are available at **no charge** for the Lazy River only.
- Call **497-6584** or **ridgewaters.com** for more information. For questions or concerns email ridgewaters@bsb.mt.com or mfisher@bsb.mt.com



Cabanas at Ridge Waters

- **Having a Party?** Cabana Rentals are available at **497-6584**. Go to **ridgewaters.com** for more info. Cabanas can be only rented up to seven days prior to an event.
3 hours (12pm-3pm or 3pm-6pm) \$30
Full day (12pm-6pm)\$50



Kids enjoying the lazy river at Ridge Waters

Ridge Waters Prices

Prices	Daily Admission	10 Punch Pass	Season Pass
Child 0-2	FREE	FREE	FREE
Youth 3-17	\$4.00	\$30.00	\$55.00
Adult 18-60	\$6.00	\$50.00	\$95.00
Senior 61+	\$4.00	\$30.00	\$55.00

Family passes are also available - \$255
2 Adults & up to 4 kids, 3-17



Friends of
Stodden Park

Financial Assistance for Ridge Waters

The Friends of Stodden Park and Ridge Waters will be offering sponsorship for low-income families that live in the City-County of Butte-Silver Bow. These sponsorships will be limited and will be awarded on a first-come first-serve policy. Applicants must meet income guidelines in order to be considered.

Go to ridgewaters.com for a financial assistance form.

2019 Ridge Waters Season Pass & Golf Pass

	Golf	Add On	Total
Single	\$300.00	\$75.00	\$375.00
Senior 61+	\$220.00	\$45.00	\$265.00
Junior under 17	\$125.00	\$45.00	\$170.00
Couple	\$425.00	\$145.00	\$570.00
Senior Couple 61+	\$300.00	\$95.00	\$395.00
College	\$220.00	\$85.00	\$305.00
Family 17 under	\$525.00	\$185.00	\$710.00
Family college	\$575.00	\$195.00	\$770.00

***GOLF AND SWIM PASSES ARE NON-TRANSFERABLE**

Want to Sponsor a Child?

Your sponsorship will help provide financial assistance to ensure all children in Butte-Silver Bow have access to Ridge Waters.

Go to friendsofstodden.org or call **497-6578**.



Enjoying the water slide at Ridge Waters

STODDEN PARK

The new dump truck play equipment at Stodden Park



**DENNIS & PHYLLIS
WASHINGTON
FOUNDATION**

STODDEN PARK

Come see the new additions to **Stodden Park** and all of the wonderful features this park has to offer!

Thanks to a generous donation from the Dennis and Phyllis Washington Foundation and Montana Resources, Stodden Park has become Montana's destination playground.

No other park in Montana offers more entertainment and fun than Stodden Park.

This inclusive mining themed playground features a full size mine dump truck with slides, a 30 foot rope climber, a "Big M" replica with climbing wall, swings, zip line, and more. For the smaller ones, Stodden has a designated area surrounded with workout stations for the adults.



Kid's enjoying the new playground equipment at Stodden Park

Stodden Park is home to Ridge Waters Water Park, Highland View Golf Course, the Spirit of Columbia Gardens Carousel, a walking trail, three rentable pavilions, sports courts, softball fields with concessions, horseshoe pits, picnic pavilions, several playground areas and a common area between Ridge Waters and the carousel, an amphitheater, and Butte's Vietnam and Korea War memorials.

The ***Spirit of Columbia Gardens Carousel*** is built in memory of the Columbia Gardens and will help preserve and restore an important part of Butte's history. The carousel features 35 hand carved horses and 2 chariots as well as other decorative elements to make it reminiscent of the carousel once located at the historic Columbia Gardens in east Butte. **buttecarousel.com**



McKenzie English riding a horse at the Columbia Gardens Carousel

POPULAR URBAN PARKS



- Kids Enjoying Splash Pad at Clark Park

CHESTER STEELE PARK

Chester Steele Park features a wading pool, playground, picnic tables and is the location of Butte's Freedom Festival on July 3rd. Chester Steele Park is located on the corner of Silver & Alabama Streets below St. James Health Care.

CLARK PARK

Clark Park, one of Butte's most popular summer haunts, offering numerous recreational opportunities, including playgrounds with the original "cowboy swings" from Columbia Gardens, picnic areas with reservable pavilions, sand volleyball pit, basketball court, splash pad and more. Clark Park is located off Texas Avenue just a few blocks east of Harrison Avenue.



Chester Steele Park

LISAC'S TRI-STOP & GOOD TYMES CASINO

Play all the Latest Games! • Line Games- Keno - Poker

COME JOIN OUR NEW PLAYERS CLUB
More Rewards - More Chances to Win



2544 Harrison Butte 782-9359
locally owned & operated



Great breakfast, pizza, snacks & drinks.
Plus, the Best Car Wash in town!



COPPER MOUNTAIN SPORTS PARK

Copper Mountain Sports Park is a 30-plus-acre site that includes playground equipment, disc golf course, youth baseball and football fields, volleyball courts, picnic areas, shelters, walking trails, and Butte's public golf driving range. Its newest addition is the Three Legends Field, new home of the Butte Miners. This first-class baseball facility boasts a 500-seat covered grandstand and brick inlaid common area. Copper Mountain Park is located off Beef Trail Road under the shadow of Timber Butte.



Baseball and softball fields at Copper Mountain. Photo by Walter Hinick

FATHER SHEEHAN PARK

Father Sheehan, a popular downtown park, is the home of Mile High Little League, and includes covered reservable picnic areas and tennis/pickleball courts. Father Sheehan also serves as the trailhead for the Blacktail Creek urban walking trail. Father Sheehan Park is located off Holiday Park Drive.



Pavilion at Foreman's Park

FOREMAN'S PARK

Foreman's Park offers one of Butte's best views. Foreman's Park sits at the site of the Mountain Con Mine: A mile high and a mile deep and is one of the trailheads for the BA&P trail. Foreman's park has Butte's largest reservable pavilion and is a great place to wander and explore the richest hill on earth. Foreman's Park is located one block east of Main Street on Pacific Street.



Children's Fishing Pond at Skyline Park

SKYLINE PARK

Skyline Park is Butte's newest outdoor space. It not only has an ADA-approved playground, but is home to Butte's only sanctioned dog park and kids' fishing pond. Nestled against the foothills, Skyline has a vast network of trails and secluded picnic areas for all to enjoy. Skyline Park is located on Bayard Street off of Continental Drive.

PARKS & FACILITY RESERVATIONS

Butte-Silver Bow has more than 450 acres of developed and undeveloped park land for all types of outdoor recreation opportunities. Many of our parks have amenities for any occasion, including picnic facilities, large events, the ability to host large athletic tournaments and more. Citizens are invited to rent and reserve park facilities at butteparksandrec.com or call **497-6535** for assistance.

Facilities with pavilions that can be rented:

Basin Creek	Foreman's Park
Clark Park	The Original Mine Yard
Copper Mountain	Stodden Park
Emma Park	Ridge Waters
Father Sheehan	

Ridge Waters now offers cabanas for rent for your birthday parties and pool parties. **497-6584**

PARKS & RECREATION PROGRAMS

Children's Programs

Contact the Parks and Recreation Department for our Summer Children's Program at **497-6535**.

Adult Volleyball

Every autumn through early winter, Butte-Silver Bow Parks and Recreation offers league volleyball, which is played at the Civic Center Annex off of Harrison Avenue. There are both women and mixed leagues. **497-6535**.

Softball

The Butte Adult Softball Association offers league softball, which is played at Stodden Park off of Utah Avenue. There are mixed, men's, and women's leagues. Facebook: Butte Adult Softball Association

Pickleball

Pickleball is a fun sport that combines many elements of tennis, badminton and ping-pong. It is played both indoors and outdoors on a badminton-sized court using a paddle and a plastic ball. There are two courts at Whittier School, four courts at Father Sheehan Park, and four courts at Stodden Park. Open play is offered on three courts at the Civic Center Annex from October through June. **497-6535**.

WALK WITH EASE

Walk with Ease is a walking group specifically designed to help individuals start and maintain a safe walking routine. Participants meet 3X per week for 6 weeks under the direct supervision of trained walking leaders. Our next session begins on May 20th and runs to June 27th at 9:00 AM at Father Sheehan Park.

Each meeting begins with a pre-walk discussion covering a specific topic related to exercise and arthritis, followed by a 10 – 40 minute walk that includes warm-up and cool-down. Participants completing this program will experience improved functional ability, decreased depression, decreased pain, and increased confidence in one's ability to exercise. Theresa Dennehy or Lori Stenson, **497-5020**.

RECREATION FACILITIES



Three Legends Stadium

BUTTE HIGH - NARANCHE STADIUM



Naranche Stadium at Butte High. Picture provided by Chuck Merrifield

Home of the Butte High Bulldogs, located at 401 S. Wyoming St., Naranche Stadium was rebuilt and re-opened in 2011. It is Montana's premier high school football stadium.

EAST MIDDLE SCHOOL

Located at 2600 Grand Avenue, Bulldog Memorial Stadium: Home of the Swede Dahlberg Invitational, Southwest Montana's largest high school track meet. East Middle School boasts one of Butte's best outdoor athletic facilities.

MAC CENTER

An all-purpose facility that hosts everything from basketball and volleyball games to community meetings and events. Home to the Butte Central Maroons Basketball and Volleyball teams, located at 550 E. Mercury St.

COPPER MOUNTAIN SPORTS PARK

Home to Butte's American Legion brand new Miners' Field and Three Legends Stadium off S. Montana St. on Beef Trail Road. This is Montana's best place to watch baseball. Copper Mountain is also home to Butte Little Guy Football, Butte's only public golf driving range and an 18-hole disc golf course.

BUTTE-SILVER BOW PUBLIC ARCHIVES



Butte-Silver Bow Public Archives

Located at 17 W. Quartz, the Archives maintain non-current government records of Butte-Silver Bow as well as historical photographs and manuscripts relating to Butte's history. Visit the Archives for tours, exhibits, research and our Brown Bag Lunch series. buttearchives.org



MT TECH - BOB GREEN FIELD



Bob Green Field

Located on the West end of Park Street at Montana Tech University. The field is named after the Montana Tech Orediggers' long-serving, outspoken and quick-witted football coach, Bob Green. This new state-of-the-art facility is home to the Montana Tech Orediggers.

THE BUTTE CIVIC CENTER

1340 Harrison Ave. is home to Southwest Montana's largest multipurpose indoor arena. It hosts multiple sporting events, concerts as well as political events. The Butte Civic Center has a capacity of 7,500.



Butte Civic Center

SWEDE DAHLBERG FIELD

Named after famed Butte athlete and coach Harry "Swede" Dahlberg. This field features a running track, all purpose sports fields and newly finished tennis courts located at West Elementary School, 1000 W. Steele St.

MOTHER LODGE THEATER

Built as the Temple Theatre in 1923, the Mother Lode has emerged, after a \$4 million renovation, as an opulent and fully equipped performing arts center. Resting at 316 W. Park, The Mother Lode is a popular venue for local, regional, and national touring productions as well as community events. **723-3602** or buttearts.org

JEREMY BULLOCK SOCCER COMPLEX



Jeremy Bullock Soccer Complex

Jeremy Bullock Soccer Complex: Located on 1107 Four Mile Road, this field hosts soccer games and tournaments for all ages.

MINE YARDS

Butte-Silver Bow Parks and Recreation maintains two former mine yards, The Original and Foreman's Park at the Mountain Con. **497-6535**.

MOUNTAIN CON & FOREMAN'S PARK



Mountain Con Mine

Originally the site of the former mine foreman's house, Foreman's Park is built on the remediated ground of the historic Mountain Con mine yard. It features sweeping views of Butte's Summit Valley, the East Ridge, the Highlands Range, and the surrounding Anaconda-Pintler, Pioneer and Flint ranges. It also extends by two miles the paved Copperway and Butte, Anaconda & Pacific trails that snake through Uptown and the West Side from Montana Tech to the Granite Mountain Memorial further north. The Mountain Con is an easily identifiable landmark - it is the mine headframe that bears the slogan 'Mile High, Mile Deep' at its base, referring to Butte's elevation above sea level and the depth of the Mountain Con Mine itself.

Park amenities include a pavilion, rest rooms, picnic tables and benches, interpretive signs, barbecue grills and more. Historical features in the project area were preserved and interpreted through signage. The pavilion at the Mountain Con is available for rent. Go to **butteparksandrec.com** or **497-6535**.

The walking trails and park can be accessed via parking lots at these locations:

- On Wyoming Street, a block north of Woolman Street.
- On Pacific Street— turn east off of Main.
- On Center Street — turn east off of Main.

ORIGINAL MINE YARD

The Original Mine Yard is one of Butte's signature historically preserved mining yards. The yard is home to a headframe (also called a "gallus" or "gallows" frame) that was used to lower men and mining equipment down into the mine and lift up Butte's gift to the United States: copper. The hoist house on site still houses the enormous gears that operated the lift to carry men and minerals up and down the shaft.

The Original Mine Yard has found new life as the world-class event location for the Montana Folk Festival, the An Ri Ra Irish Festival and Butte-toberfest (Butte's Oktoberfest).

From the grassy lawn of the Original yard, watch world-famous musicians saw at their violins or pluck banjos during the Folk Festival. Enjoy the fast-kicking Irish step dancers during An Ri Ra.

The Original Mine Yard means entertainment in a city known for its original personality. If you are interested hosting an event at the Original Mine Yard, call **497-6535**.

Original Mine Yard



SAME-DAY APPOINTMENTS

Life has its sprains, strains, cuts, and minor dislocations. That's why we're excited to announce OrthoNow.

Conveniently located within the Montana Orthopedic Clinic, OrthoNow is your first choice for walk-in and same-day orthopedic care. It's staffed by a certified Nurse Practitioner and supported by Board Certified Orthopedic Surgeons.

To learn more visit MontanaOrthopedics.com/Now

OrthoNow is not for major emergencies. Patients with severe bleeding or open fractures should visit the emergency room.

orthoNOW
at Montana Orthopedics

435 S CRYSTAL • 496-3400 • MONTANAORTHOPEDICS.COM/NOW



Make this summer COUNT

WITH SUMMER LEARNING AT SYLVAN

Kids can lose up to 2 1/2 months of learning in the summer. Stay ahead of the curve with Sylvan's summer sessions!

Summer sessions are filling up fast. Call today!

Purchase 48 hours of summer instructional hours and receive a 5% discount. These instructional hours can apply to Reading, Writing, Math, Study Skills, College Prep Writing, or Advanced Reading Skills. Summer is a great time to catch up, keep up or get ahead.

Offer valid at the Butte and Helena Centers only. Expires 7/16/19.

Sylvan Learning
Butte
782-5700
sylvan@sylvanbutte.com

Sylvan Helena
443-9205
sylvanhelena@montana.com

SYLVANLEARNING.COM/Butte

RURAL PARKS & RECREATION NEAR BUTTE

BIG BUTTE OPEN SPACE

Big Butte offers hiking trails, a mountain bike skills park, and a disc golf course to recreation enthusiasts. Big Butte is home to the famous Montana Tech “M” and has an easy uphill climb to the top offering panoramic views of the entire valley

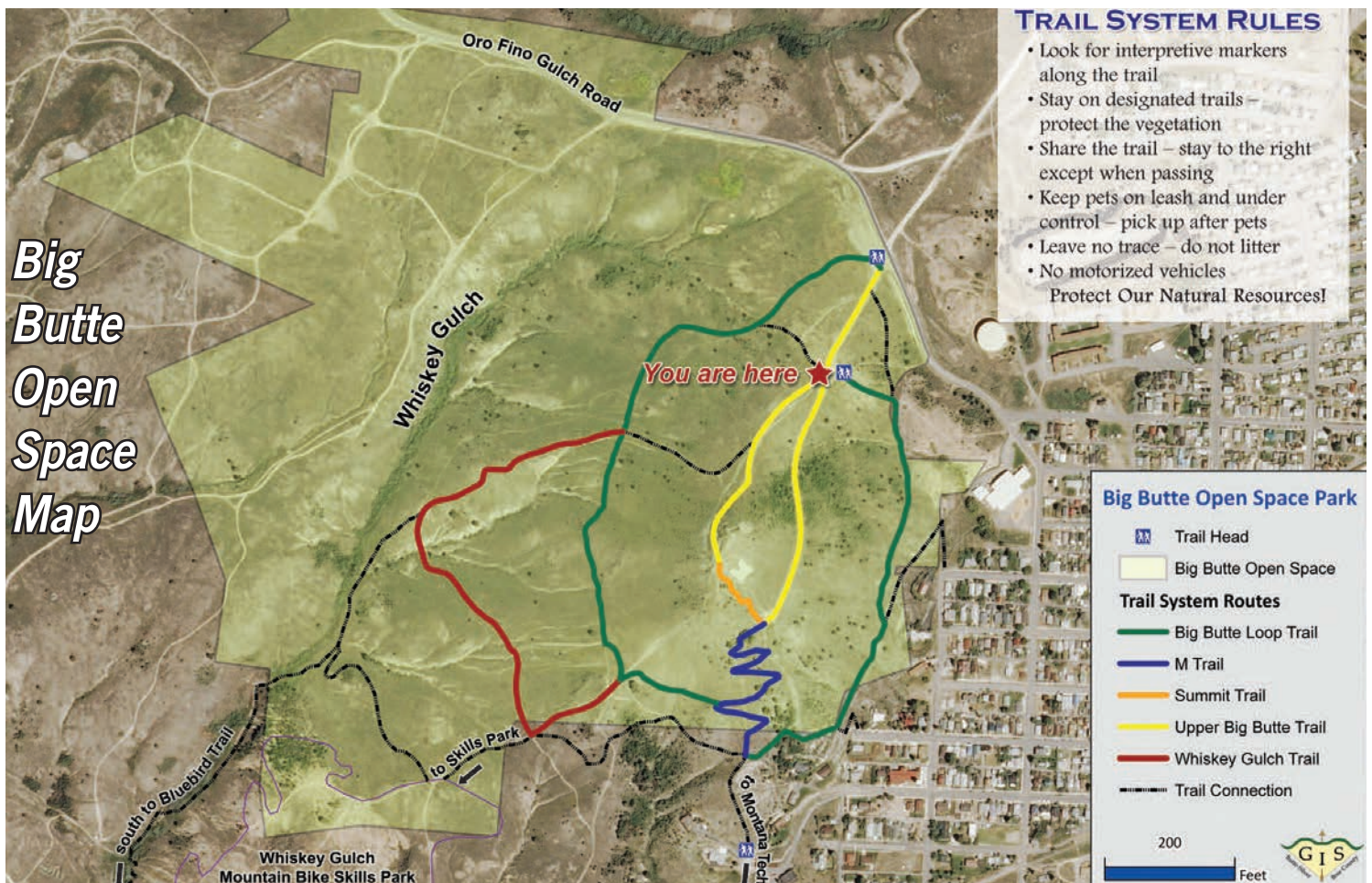
BASIN CREEK

Located just outside Butte, Basin Creek is home to the historic caretaker’s house and is a quick and easy getaway from the urban hustle and bustle of Butte’s famous Uptown. Basin Creek features a reservable gazebo as well as hiking opportunities.

SHEEPSHEAD RECREATION AREA

Sheepshead Recreation Area is located 20 miles north of Butte and offers visitors day use opportunities for picnicking and fishing at Maney Lake. There are two pavilions that can be rented for special events that includes volleyball, horseshoes, and picnic tables. Contact the Butte Ranger District at **494.2147**.

- Hiker on trail on Big Butte.



Popular Local Trails

See all area trails by visiting Butte-Silver Bow's interactive trail map co.silverbow.mt.us/454/Trails-Outdoor-Recreation

SILVER BOW CREEK GREENWAY TRAIL

BA&P Trail 4.1 miles

Big Butte Open Space Trails over 3 miles of usable trails

Blacktail Creek Trail 1.75 miles

Civic Center Trail 1.44 miles

Maud S Canyon Trail 4 miles

Silver Bow Creek Greenway Trail 6.1 miles

Thompson Park Trails over 25 miles of usable trails

For more extensive information on area trail, camping and hiking information please visit Butte-Silver Bow's Trails & Outdoor Recreation page at co.silverbow.mt.us/454/Trails-Outdoor-Recreation.



MONTANA PRECISION PRODUCTS

Montana Precision Products builds parts for jet engines!

We are a certified aerospace manufacturer based in Butte, MT, and a 50/50 joint venture between GE Aviation and SeaCast. We specialize in the manufacture of tube and duct assemblies and small structural castings for aerospace applications.

We look for employees committed to the growth and prosperity of this company through their contributions as constant learners, team players and their generalized and specialized skills.

We offer competitive wages plus benefits that include Medical/Dental/Vision Care, Paid Time Off (PTO), Parental Leave, Life Insurance, Employee Assistance Program, and 401k.

Join a dynamic and growing business!

We are hiring for TIG Welders, Maintenance Technicians, Production Technicians and Production Specialists.

Apply online at www.mtpp.com

Contact us:
Montana Precision Products
119800 Rick Jones Way
Butte, MT 59750
Telephone: 406-496-3331

ELEVATE YOUR FINANCIAL WELL-BEING.

Join today. Visit HZCU.ORG to learn more.


HORIZON
CREDIT UNION

Your Path. Our Purpose.

Federally Insured by NCUA



Hikers on one of many trails at Thompson Park.

THOMPSON PARK

Thompson Park is a Congressionally designated Municipal Recreation area managed by Butte-Silver Bow and Beaverhead-Deerlodge National Forest. This 3,500 acre natural area at the edge of town offers mountain biking, horse-back riding, and hiking opportunities on more than 25 miles of trails that provide a connection to the Continental Divide National Scenic Trail (CDNST). Spend the day at one of three picnic areas or enjoy a round of disc golf at the Eagles Nest Disc Golf Course. The 4.5 mile Milwaukee Road Rail-Trail that travels through two tunnels and across a trestle that connects to the CDNST and serves as a backbone to loop trail opportunities. During the winter many trails are now groomed for fat-biking. Enjoy other winter activities including backcountry skiing and snowshoeing.

JON'S GULCH WILDFLOWER WALK AT THOMPSON PARK

June 1st 2019 - Flowers are blooming at Thompson Park! Come join the Beaverhead-Deerlodge National Forest's botanist and pollinator exploring the colorful flowers in the park. Meet at Sagebrush Flats. **494-2147**



Homestake Lodge

Come Enjoy our Trails!
mountain biking, hiking & running free
summer trail use & open to the public

www.homestakelodge.com
E: mandy@homestakelodge.com P: 406-585-8052



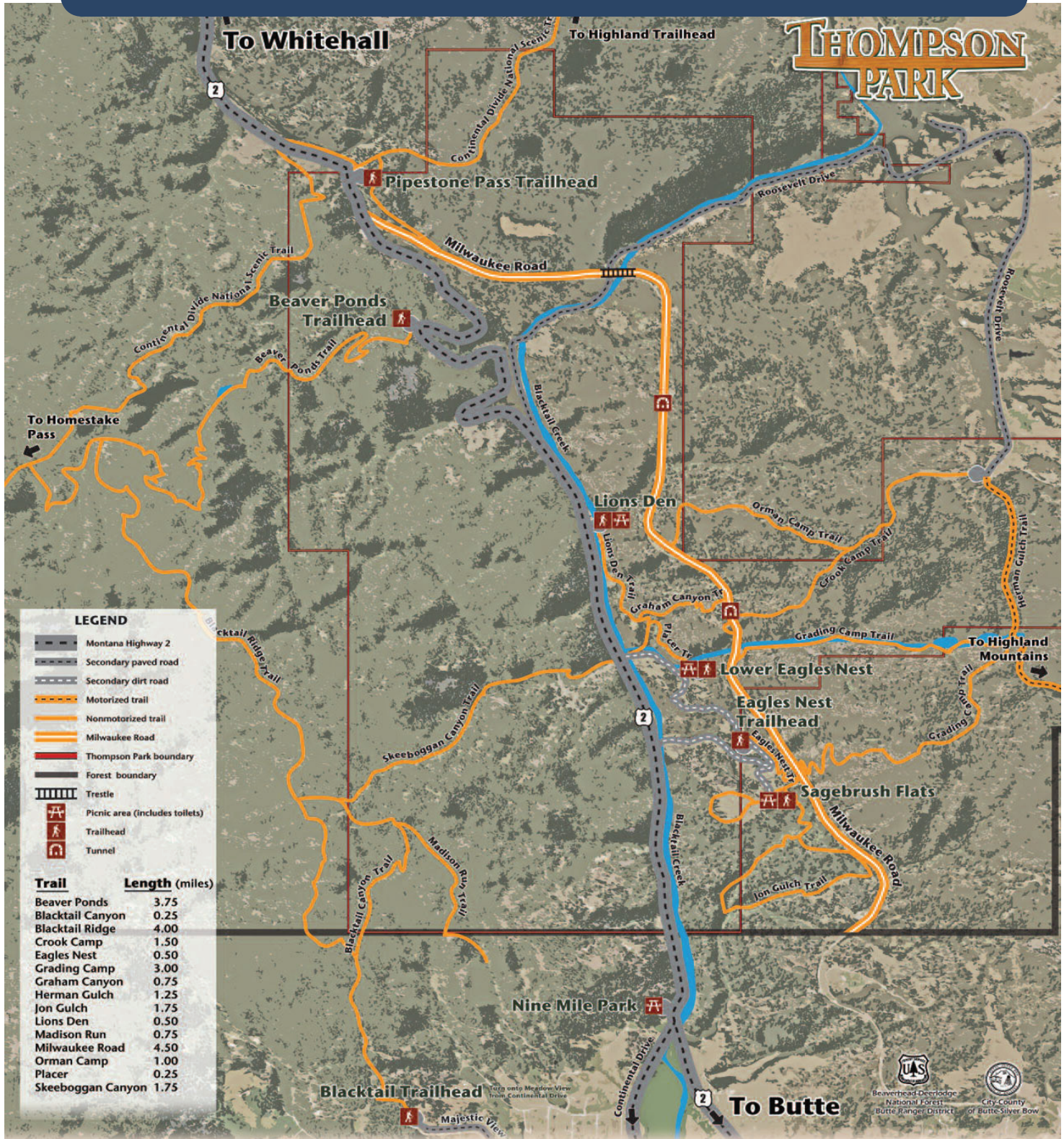
BUTTE CIVIC CENTER

SOUTHWEST MONTANA'S PREMIER MULTI-PURPOSE FACILITY
Concerts, Rodeos, Bull Riding, MMA Fights, Family Events,
Local Basketball & Wrestling, Trade Shows & Bazaars.

www.butteciviccenter.com
Butte Civic Center • 406-497-6400



THOMPSON PARK



Butte-Silver Bow Parks and Recreation
BSB Courthouse, 155 W. Granite Street
Butte, MT 59701
(406) 497-6200 or 497-6408
www.co.silverbow.mt.us

Beaverhead-Deerlodge National Forest
Butte Ranger District, 1820 Meadowlark Lane
Butte, MT 59701
(406) 494-2147
www.fs.usda.gov/bdnf

The City-County of Butte-Silver Bow is an Equal Opportunity Employer (M/F/H/V)

Enjoy Butte's outdoor spaces.



HEADFRAMES

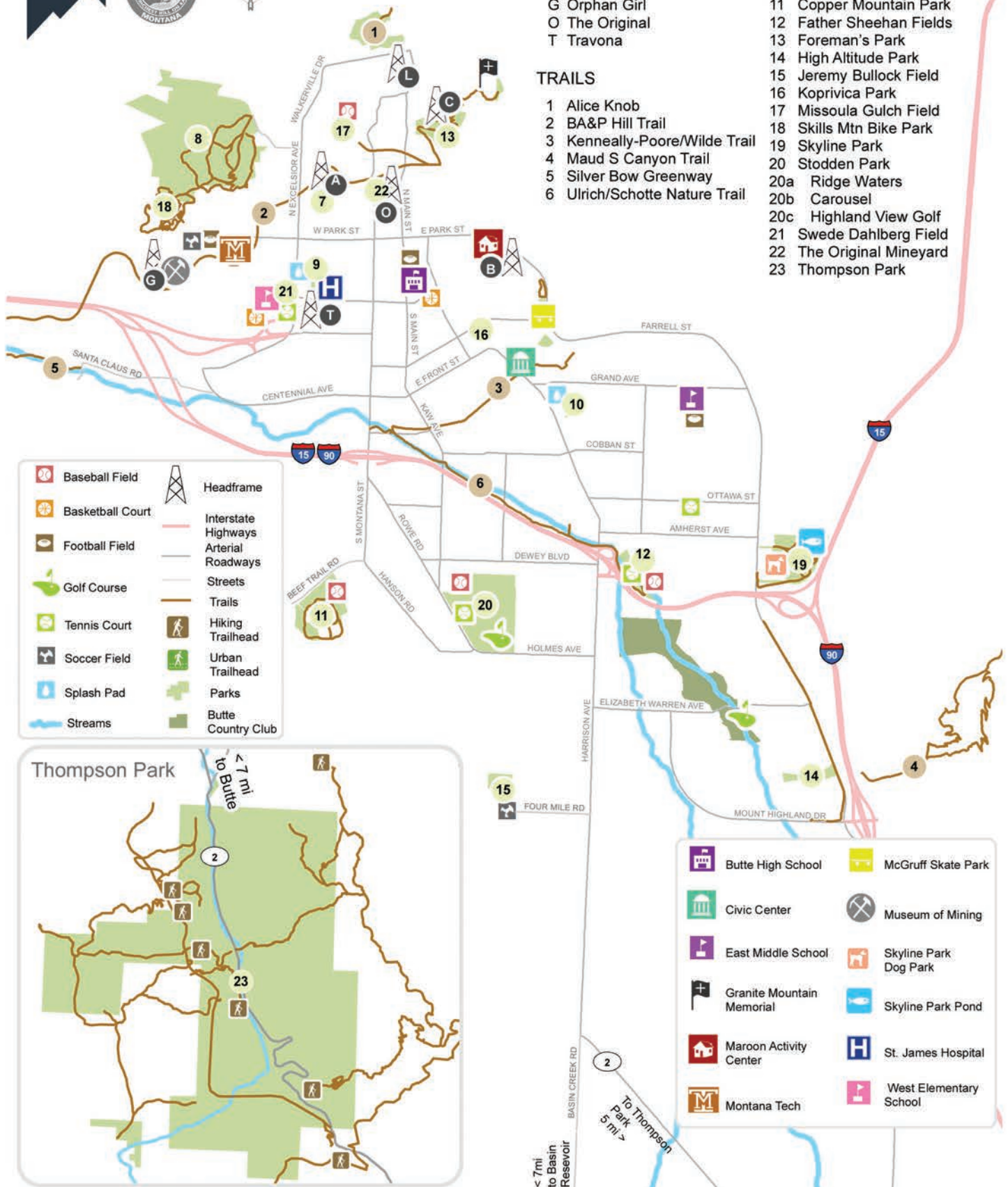
- A Anselmo
- B Belmont
- L Lexington
- C Mtn. Con
- G Orphan Girl
- O The Original
- T Travona

TRAILS

- 1 Alice Knob
- 2 BA&P Hill Trail
- 3 Kenneally-Poore/Wilde Trail
- 4 Maud S Canyon Trail
- 5 Silver Bow Greenway
- 6 Ulrich/Schotte Nature Trail

PARKS

- 7 Anselmo Park
- 8 Big Butte Park
- 9 Chester-Steele Park
- 10 Clark Park
- 11 Copper Mountain Park
- 12 Father Sheehan Fields
- 13 Foreman's Park
- 14 High Altitude Park
- 15 Jeremy Bullock Field
- 16 Koprivica Park
- 17 Missoula Gulch Field
- 18 Skills Mtn Bike Park
- 19 Skyline Park
- 20 Stodden Park
- 20a Ridge Waters
- 20b Carousel
- 20c Highland View Golf
- 21 Swede Dahlberg Field
- 22 The Original Mineyard
- 23 Thompson Park



HIGHLAND VIEW GOLF COURSE



Golfer taking a swing at Highland View Golf Course

Highland View Golf Course is located in Stodden Park at 3150 S. Utah. The entrances to Stodden Park is located off Dewey Boulevard and Rowe Road. Highland View offers a 9-Hole regulation course and a 9-Hole Par 3 course.

The regulation 9-Hole course was built in 1939. This par 35 course has 2 challenging Par-3s and a new green on Hole #6. The course is designed to challenge every aspect of the golfer's game. There is a different set of tees for the back nine. It takes around two hours to play nine holes. Once you are on the course, you will understand the course name, Highland View.

The par-3 course was built in 1980. The design of this course was to allow the golfer to have a full swing at each green. The greens have a lot of characteristics and challenge every golfer. The Par-3 is easy to walk and a lot of fun for the family.

The golf season at Highland View is from April 1st to October 31st. There is a warm-up net located at the course and a driving range located at Copper Mountain Park.

For tee times, please call **497-6578** or **highlandviewgolf.com**. Tee times can be made 2 days in advance.

LEAGUES

Men's – Thursday Night @ 6:00 PM*

Senior's – Tuesday morning 7:00 AM to 12:00 PM*

Women's (Bonnie Highlanders) – Tuesday night @5:30 and Thursday Morning.*

**Non-members are encouraged to participate and must pay Green Fees.*

JUNIOR GOLF CAMPS

SESSION 1 - June 12, 19, 26

SESSION 2 - July 10, 17, 24

Ages: 7-9, 8:30-9:45

10-12, 10:00-11:15

13-15, 11:30-12:45

Cost: \$25 per session

Register at Highland View Golf Course or email our Pro at mfisher@bsb.mt.gov or call **497-6578** or **highlandviewgolf.com** for more info.

2019 RATES

9 Hole Regulation

9 Holes - \$14 walking; \$24 with cart per golfer

18 Holes - \$23 walking; \$39 with cart per golfer

Par 3

9 Holes - \$10 walking; \$20 with cart per golfer

18 Holes - \$15 walking; \$31 with cart per golfer

JUNIOR RATES

9 Hole Regulation

9 Holes - \$8

18 Holes - \$13

Par 3

9 Holes - \$3

18 Holes - \$5

**Monday and Wednesday is \$1 on par 3 for juniors under the age of 18 years old until 4:00 PM*

RENTALS

Golf Club Rentals - \$6 / Junior Club Rentals - FREE
Pull Carts - \$3

2019 Highland View Golf Tournaments

June: SWMTJR - June 10th

July: Men's Inv. - July 6th - 7th

August:

- Highway Dept
- Bonnies
- Chamber/Digger Lee LaBreche Tourney - August 16
- BCC - August 13th
- Senior Scramble
- Bonnies Steak Fry
- East Side
- AOH
- Lee LaBreche Par Three Tournament

September:

- Uno's
- Streak Fry Highland VC
- Turkey Tourney

OTHER GOLFING OPPORTUNITIES AROUND BUTTE

Butte Country Club, 3400 Elizabeth Warren, Butte MT.
494-7900

Anaconda Country Club, 1521 Country Club Road,
Anaconda MT. **797-3220**

Fairmont Hot Springs, 1500 Fairmont Road, Fairmont
MT. **797-3000**

Old Works Golf Course, 1205 Pizzini Way, Anaconda MT.
563-5989

Beaverhead Golf Course, 1260 Highway 41 N, Dillon
MT. **683-9933**

Headwaters Golf Course, 225 N 7th Ave E, Three Forks
MT. **285-3700**

Deer Lodge Golf Club, 838 Golf Course Road, Deer
Lodge MT. **846-1625**

Madison Meadows Golf Course, 110 Golf Course Road,
Ennis MT. **682-7468**

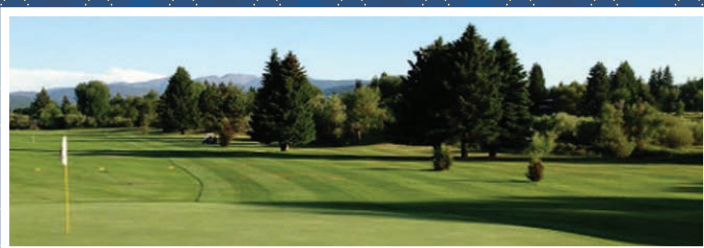
*For more information, call 497-6578 or
highlandviewgolf.com*

2019 SEASON GOLF PASS WITH RIDGE WATERS PASS

	Golf	Add On Ridge Waters	Total
Single	\$300.00	\$75.00	\$375.00
Senior 61+	\$220.00	\$45.00	\$265.00
Junior under 17	\$125.00	\$45.00	\$170.00
Couple	\$425.00	\$145.00	\$570.00
Senior Couple 61+	\$300.00	\$95.00	\$395.00
College	\$220.00	\$85.00	\$305.00
Family 17 under	\$525.00	\$185.00	\$710.00
Family college	\$575.00	\$195.00	\$770.00



***GOLF AND SWIM PASSES ARE
NON-TRANSFERABLE**



Call Today for Membership Information



406-494-2394

BUTTECOUNTRYCLUB.ORG
3400 Elizabeth Warren Ave Butte, MT



**Great Golf under
the Big Sky!**

9 holes • 7 days week
Sunrise to Sunset • Carts, driving
range, bar, snack bar and Banquet
room (available for rent)

**ANACONDA COUNTRY
CLUB & GOLF COURSE**
1 Country Club Ln, Anaconda, MT • (406) 797-3220



SUMMER FUN 2019

CALENDAR OF YOUTH EVENTS

Brought to you by Cathy Maloney, County Superintendent of Schools



JUNE

- 1 Wildflower Walk at Thompson Park, all ages, 9:30am., (464-2147)
- 1 Butte-Silver Bow Kiwanis Bike Rodeo – Civic Center north parking lot. 9am-2pm.
- 3-5 Butte High Athletics: Football Camp - grades 9-12 Arie Grey (498-1143)
- 5 Scavenger Hunt by Journey Church – grades 7-12 from 6pm to 8pm, meet at 2055 Florence Ave. (723-5543)
- 7 Uptown Art Walk 5pm-9pm. Judy, (431-0958)
- 7-9 MT Tech Football 6 & 8-Man Camp (496-4768)
- 10-13 MT Tech Girls' Sports Volleyball/Basketball Camp – grades 3-9 (496-4288)
- 10-13 Tennis Camp (490-7826)
- 10-14 YMCA Summer Camp: Aloha Summer-greet the summer with island fun. Camps run from 7:30am-6pm grades K-5. (782-1266)
- 10-20 YMCA Swim Lessons (782-1266)
- 11-13 MT Tech Football 11-Man Team Camp (496-4768)
- 12 Nerf Gun Wars by Journey Church – for grades 7-12 – from 6pm-8pm, meet at 2055 Florence Ave. (723-5543)
- 12-15 Boys Adventure Church Camp for grades 3-6 (Judith Gap) Info on cost and registration (723-5543)
- 13 Library Summer Reading Program 2pm-3pm (723-3361)
- 14-15 MT Tech Girls' Basketball Elite Camp – grades 9-12 (496-4288)
- 15 Miner's Union Day at World Museum of Mining 9am-6pm (723-7211)
- 17-19 MT Tech Youth Development Basketball Camp Boys & Girls, (grades K-3 from 9am-12pm) (Grades 4-8 from 1pm to 5pm) (496-4205)
- 17-21 R.O.C.K.I.E.S. Enrichment Summer Program – 4-6 Blow off some S.T.E.A.M. – 8:30am-11:30am (Mon. through Fri.), (533-2548)
- 17-21 R.O.C.K.I.E.S. Enrichment Summer Program – K-3 Bakery Boss – 12pm-2pm (Mon. through Fri.), (533-2548)
- 17-21 R.O.C.K.I.E.S. Enrichment Summer Program – 4-6 TECHinator Computer Camp – 12pm-2pm (Mon. through Fri.), (533-2548)
- 17-21 YMCA Summer Camp: Mystery Week – follow clues, figure out puzzles be a detective. Camps run from 7:30am-6pm for grades K-5 (782-1266)
- 17-21 Butte High Athletics: Girls' Basketball Camp - Maury Cook (560-4393)
- 17-28 R.O.C.K.I.E.S. Summer Program – Session I: grades K-3 Reading 8am to 12pm (Mon. through Fri.), (533-2548)
- 17-28 R.O.C.K.I.E.S. Summer Program – Kindergarten Jumpstart: Incoming K Readiness - 8am-11:30am (Mon. through Fri.), (533-2548)
- 17-30 Action Inc Summer Meals Program for youth 18 and younger. (Mon. through Fri.) BREAKFAST: East Middle School at 7:30am; Butte High Career Center at 8am and SWMTCH at 9am. LUNCH: East Middle School at 10:30am; Butte High Career Center at 11:15am; Clark's Park at 11:45am; SWMTCH, Butte Public Library, Chester Steele Park, Silver Bow Homes, Silver Bow Village and North American Indian Alliance at 12pm; and Legion Oasis at 12:15pm. (533-6855)
- 18-20 Sylvan Learning – Coding (Game Design) Workshop, 12:30pm-3pm (782-5700)

- 20 Spirit of Columbia Gardens Carousel: Children's Day (all children ride free)
- 20 Library Summer Reading Program 2pm- 3pm (723-3361)
- 21 MT Tech Elite (Individuals) Football Camp grades 9 - 12 (496-4768)
- 22-25 4-H Camp Loon Lake, Kellie (723-0217)
- 24-26 MT Tech Little Guy Football Champ Camp, grades K-8 (496-4768)
- 24-27 MT Tech High Potential I: Basketball Camp: grades 9-12 - 9am-8:30pm (496-4205)
- 24-28 R.O.C.K.I.E.S. Enrichment Summer Program – 4-6 Hoop it Up Basketball Camp – 8:30am-11:30am (Mon. through Fri.), (533-2548)
- 24-28 R.O.C.K.I.E.S. Enrichment Summer Program – K-3 Hoop it Up Basketball Camp – 12pm-2pm (Mon. through Fri.), (533-2548)
- 24-28 R.O.C.K.I.E.S. Enrichment Summer Program – 4-6 Apprentice Chefs – 12pm-2pm (Mon. through Fri.), (533-2548)
- 24-28 YMCA Summer Camp: Safari Week – Explore plants & animal kingdom/where they live. Camps run from 7:30am to 6pm for grades K-5 (782-1266)
- 24-Jul-2 YMCA Swim Lessons (782-1266)
- 26 Volleyball and Worship Night - Come join the fun at Clark's Park from 6pm-8pm for grades 7-12. (723-5543)
- 26-27 Sylvan Learning – Robotics Workshop, 10am-12pm (782-5700)
- 27 Library Summer Reading Program 2pm-3pm (723-3361)
- 27 Music on Main – 6pm-9pm – family fun and kid's activities, food and beverage vendors. Bring chairs. (299-3998)
- 28 Colt Anderson Dream Big Skills Camp, Naranche Stadium (am), Keelie (498-2306)
- 28 Colt Anderson Dream Big Family Fun Day, Civic Center (pm), Keelie (498-2306)

JULY

- 1-31 Action Inc Summer Meals Program for youth 18 and younger. (Mon. through Fri.) NO MEALS ON JULY 3RD OR 4TH. BREAKFAST: East Middle School at 7:30am; Butte High Career Center at 8am and SWMTCH at 9am. LUNCH: East Middle School at 10:30am; Butte High Career Center at 11:15am; Clark's Park at 11:45am; SWMTCH, Butte Public Library, Chester Steele Park, Silver Bow Homes, Silver Bow Village and North American Indian Alliance at 12pm; and Legion Oasis at 12:15pm. (533-6855)
- 1-3 YMCA Summer Camp: Have a ball week – indoor/outdoor sports. Learn to play team and individual sports. Camps run from 7:30am-6pm for grades K-5.(782-1266)
- 4 Music on Main – 6pm-9pm – family fun and kid's activities, food and beverage vendors. Bring chairs. (299-3998)
- 5 Uptown Art Walk 5pm-9pm. Judy, (431-0958)
- 7-12 Girl Scout Camp Castle Rock – (Nature of Art ALL girls in grades 2-6) (Survival Hacks ALL girls in grades 4-8) (Ultimate Outdoor Odyssey ALL girls grade 6-12) www.gsmw.org
- 8-10 Butte High Athletics: Football Grade School, Arie Grey (498-1143)
- 8-11 MT Tech High Potential II: Basketball Camp, grades 5-8 – 9am-8:30pm (496-4205)
- 8-11 Tennis Camp (490-7826)
- 8-12 YMCA Summer Camp: Imaginarium Week – Pirates, superheroes, princesses, & monsters,

if you can think it you can be it. Construct your own game, fort, invention, and crafts. Camps run from 7:30am-6pm for grades K-5 (782-1266)

- 8-12 R.O.C.K.I.E.S. Enrichment Summer Program – K-3 Wild at Art Camp – 12pm-2pm (Mon. through Fri.), (533-2548)
- 8-13 Teen Bible Camp for grades 9-12 (Hungry Horse Mt-Glacier Bible Camp) Info on cost and registration (723-5543)
- 8-18 YMCA Swim Lessons (782-1266)
- 8-19 R.O.C.K.I.E.S. Summer Program – Session II: K-3 Mathematics 8am-12pm (Mon. through Fri.), (533-2548)
- 8-19 R.O.C.K.I.E.S. Enrichment Summer Program – K-6 Outdoor FUNatics – 8:30am-11:30am (Mon. through Fri.), (533-2548)
- 11 Music on Main – 6pm-9pm – family fun and kid's activities, food and beverage vendors. Bring chairs. (299-3998)
- 11 Library Summer Reading Program 2pm- 3pm (723-3361)
- 14-18 Tennis – City Youth and Adult Tennis Tournament (490-7826)
- 14-19 Girl Scout Camp Castle Rock – (Ways of the Wild West ALL girls grade 2-6) (Digging History ALL girls grade 4-8) (The Green Scene ALL girls grade 4-12) www.gsmw.org
- 15-19 YMCA Summer Camp: Junior Safety Week – Learn how to be safe. Talk to safety experts. Camps run from 7:30am-6pm for grades K-5. (782-1266)
- 15-19 Kids Bible Camp for grades 3-6 (Hungry Horse Mt-Glacier Bible Camp) Info on cost and registration (723-5543)
- 15-19 R.O.C.K.I.E.S. Enrichment Summer Program – grades K-3 Techno Kids Camp – 12pm to 2pm (Mon. through Fri.), (533-2548)
- 15-19 R.O.C.K.I.E.S. Enrichment Summer Program – grades 4-6 Artist on campus – 12pm to 2pm (Mon. through Fri.), (533-2548)
- 17 Hike with Journey Church – for grades 7-12 – 10am, meet at 2055 Florence Ave. (723-5543)
- 18 Spirit of Columbia Gardens Carousel: Children's Day (all children ride free)
- 18 Music on Main – 6pm-9pm – family fun and kid's activities, food and beverage vendors. Bring chairs.(299-3998)
- 18 Library Summer Reading Program 2pm- 3pm (723-3361)
- 19-21 Girl Scout Camp Castle Rock – (Naturalist Specialty ALL girls K-8 with Adult) www.gsmw.org
- 21-23 Girl Scout Camp Castle Rock – (Girls Who Soar – Try-it Camp for grades 2-6) www.gsmw.org
- 21-25 Girl Scout Camp Castle Rock – (Girls Who Soar ALL girls in grades 2-6) (Adventure Quest ALL girls in grades 4-8) (Aces of Archery ALL girls grade 6-12) www.gsmw.org
- 22-25 Butte High Athletics: Girls High School Volleyball Camp - Jeni Hope (479-3211)
- 22-26 YMCA Summer Camp: Blast to the Past Week – Walk with dinosaurs, look for mummy's, make history fun! Camps run from 7:30am- 6pm for grades K-5 grade (782-1266)
- 22-26 R.O.C.K.I.E.S. Enrichment Summer Program – 4-6 Minecraft for Education – 8:30am-11:30am (Mon. through Fri.), (533-2548)
- 22-26 R.O.C.K.I.E.S. Enrichment Summer Program – K-3 Mad Scientists– 8:30am-11:30am (Mon. through Fri.), (533-2548)
- 22-26 R.O.C.K.I.E.S. Enrichment Summer Program –



- 4-6 Drama Club – 12pm-3pm (Mon. through Fri.), (533-2548) 1-9
- 22-26 R.O.C.K.I.E.S. Enrichment Summer Program – K-3 Krazy Kids – 12pm-2pm (Mon. through Fri.), (533-2548)
- 22-26 Butte High Athletics: Wrestling Camp – Cory Johnston (231-9725)
- 22-27 Teen Bible Camp for grades 7-8 (Hungry Horse Mt-Glacier Bible Camp) Info on cost and registration (723-5543)
- 22-Aug-1 YMCA Swim Lessons (782-1266) 2
- 23-25 Sylvan Learning – Robotics Workshop, 10am-12pm (782-5700) 5-8
- 24 MT Tech Digger 7 on 7 Shoot Out (496-4768) 5-9
- 25 National Carousel Day! In celebration all children ride free at the Spirit of Columbia Gardens Carousel
- 25 Music on Main – 6pm-9pm – family fun and kid's activities, food and beverage vendors. Bring chairs. (299-3998)
- 25 Library Summer Reading Program 2pm- 3pm (723-3361) 5-9
- 27 The Butte 100 Bike Race – butte100.com or Len Janson (775-224-9238) 5-15
- 29-Aug 2 International Soccer Camp at the Jeremy Bullock Soccer Complex. www.miningcityfc.com 6
- 2-Aug 2 YMCA Summer Camp: Around the World Week – Try food, games and crafts from places around the world. Camps run from 7:30am-6pm for grades K-5 (782-1266) 7

AUGUST

- 1 Music on Main – 6pm-9pm – family fun and kid's activities, food and beverage vendors. Bring chairs. (299-3998)
- 1-3 Butte-Silver Bow County Fair at the Butte Vigilante Saddle Club

- Action Inc Summer Meals Program for youth 18 and younger. (Mon. through Fri.) BREAKFAST: East Middle School at 7:30am; Butte High Career Center at 8am and SWMTCH at 9am. LUNCH: East Middle School at 10:30am; Butte High Career Center at 11:15am; Clark's Park at 11:45am; SWMTCH, Butte Public Library, Chester Steele Park, Silver Bow Homes, Silver Bow Village and North American Indian Alliance at 12pm; and Legion Oasis at 12:15pm. (533-6855)
- Uptown Art Walk 5pm-9pm. Judy, (431-0958) 13
- Tennis Camp (490-7826) 14
- Art Camp at the IBRC, children will have the chance to learn, explore and experiment with art and other creative projects. Options of morning (9am-12pm), afternoon (1pm-4pm) or all day (9am-4pm) all at the Imagine Butte Resource Center. Lunch included. Will be open to kids ages 7-14 info@phoenixartsalliance.org. 15
- YMCA Summer Camp: Oh, a camping we will go! – Take a camping trip to the Y Camps run from 7:30am-6pm for grades K-5 (782-1266) 15
- YMCA Swim Lessons (782-1266) 19-22
- National Night Out, McGruff/Manning Park, 6pm 19-23
- Water Park by Journey Church – for grades 7-12 – from 1pm-4pm, meet at 2055 Florence Ave. at 12:45pm Water Park entry fee will be charged. (723-5543) 21
- Music on Main – 6p-9pm – family fun and kid's activities, food and beverage vendors. Bring chairs. (299-3998) 22
- Tennis – City Mixed Doubles Tennis Tournament (490-7826) 22
- YMCA Summer Camp: Wacky Weird Science – Wacky science for us to play. Camps run from 7:30am-6pm for grades K-5 (782-1266) 22-24

- Sylvan Learning – Robotics Workshop, 10am-12pm (782-5700)
- Water Wars by Journey Church – for grades 7-12 – from 6pm-8pm, (723-5543)
- Spirit of Columbia Gardens Carousel: Children's Day (all children ride free).
- Music on Main – 6pm-9pm – family fun and kid's activities, food and beverage vendors. Bring chairs. (299-3998)
- Sylvan Learning – Organize & Time Management Camp, 12:30pm-2:30pm (782-5700)
- YMCA Summer Camp: Extreme Arts and Crafts – just like arts and crafts but EXTREME! Camps run from 7:30am-6pm for grades K-5 (782-1266)
- Frisbee Golf by Journey Church – for grades 7-12 – from 6pm-8pm, meet at 2055 Florence Ave. (723-5543)
- Music on Main – 6pm-9pm – family fun and kid's activities, food and beverage vendors. Bring chairs. (299-3998)
- Dress a Child United Way (782-1255)
- Mega Sports Camp by Journey Church: 6pm-8pm at Clarks Parks. This is a free mini training/skills camp for football, basketball, drama, cheerleading. grades 1-6. Troy, (723-5543)
- YMCA Summer Camp: Y I love summer – replay and redo all your favorite games and activities throughout the summer. Finish with Spartan Race. Camps run from 7:30am-6pm for grades K-5 (782-1266)
- Back to School Bash by Journey Church – for grades 7-12 – 5pm, meet at 2055 Florence Ave. (723-5543)
- Music on Main – 6pm-9pm – family fun and kid's activities, food and beverage vendors. Bring chairs. (299-3998)

YOUTH ORGANIZATIONS

American Legion Baseball
(406) 494-8054 / (406) 533-0939
Ron Davis

Big Brothers Big Sisters
(406) 782-9644
Mandy Kambic

Big Hole River Foundation
(406) 560-7089
Corky Logan

Bounce Off The Wall
(406) 299-2342
Joe and Melissa Wanacott

Boy Scouts
(406) 603-0904
Joe Toro

BSB Highland View Golf Course
(406) 494-7900
Mark Fisher

BSB Parks & Recreation
(406) 497-6535
JP Gallagher

Butte Amateur Hockey Assn.
(406) 498-1877
Zanae Bates

Butte Center for the Performing Arts
(406) 723-3602
Robin Busch

Butte Copper Kings
(406) 541-2629
Zanae Bates

Butte Country Club
(406) 494-3383

Butte Dae Myung Martial Arts Academy
(406) 491-1016
Tim Russell

Butte Gun Club
info@buttegunclub.org

Butte High Altitude Skating Center
(406) 494-4018
David Silk

Butte Horseshoe Club
(406) 498-4863
Mike Clark

Butte Blizzard Lacrosse
(406) 533-2215

Butte Soccer Club
(406) 496-6409
Rob Dwyer

Butte Special Riders
(406) 497-2612
Joanie Kissonck

Butte Tarpons Swim Team
(406) 723-4800
Susan Huckleby

Butte Trap & Skeet Club
(406) 444-1267
Tim Cassidy / James Jones

Butte Wrestling Club
(406) 498-9790
Matt Stepan

Butte Young Professionals
(406) 533-6781
Joe Willauer

B'on the Edge Dance
(406) 490-8143
Deeanna Worley

Challenger Sports Soccer
(406) 496-6409
Rob Dwyer

Copper City Gear Jammers
(406) 497-6535
Brody Hackman

Dynamic Dance
(406) 498-6270
Kim Harrington

Fuel Fitness
(406) 541-7500

Girl Scouts
(800) 736-5243 ext. 2307
Jennifer McFarland

High Altitude Ice Skating
(406) 494-4018
Dave Silk

Grit Training Center
(406) 565-2873
Sam Rauch

Homestake Lodge
(406) 585-8052
Mandy Axelson

Hunter's Safety (FWP)
(406) 490-8561

League Baseball, Mile High
(720) 220-5275
Keith Miller

Lion Pit Family Martial Arts
(406) 565-9183

Little League Baseball, Mile High
(505) 292-7810
Lance Bailey / Keith Miller

Little League Baseball, Northwest
(406) 533-8487
Greg McGillen

Little Steps Dance Troupe
(406) 593-2522
Jennifer Ricci

MAC Wrestling Club
(406) 723-1228
John Stillwagon

Marauders Soccer
(406) 498-5110
Kelly Howery

Mariah's Challenge
(406) 490-2739
Leo McCarthy

Marley's Paint & Party
(406) 491-2726
Linda Morley

Mile High Backcountry Horsemen
(406) 490-7478
Matt Pederson

Mile High Baseball
(406) 498-0727
Lance Bailey / Keith Miller

Mile High Horseshoe Club
(406) 498-4863
Mike Clark

Mining City Magic Softball
(406) 498-3487
Shane McCarthy

Mining City Dance Co
(406) 491-8485
Kathy Rowe

Montana Dance Works
(406) 299-2381
Shawna Hollow

Northwest Baseball
(406) 533-8487
Greg McGillen

Orphan Girl Children's Theatre
(406) 782-5657
Jacki Freeman

Rocky Mtn Martial Arts
(406) 494-2754
Sara Lightner

Science Mine
(406) 496-4124 / (406) 497-7777
Fred Hartline/Doug Coe/Lois Podobnik/Patrick Kujawa

Silver Bow Youth Leaders
(406) 490-5436
Don Berryman & Diana Widhalm

Special Olympics Montana, SW Area
(406) 723-6214
Cindy Ruffner

Teens Advocating a Safe Community (TASC)
(406) 498-4870
Josh Peck

Tiernan Irish Dance
(406) 475-3722
Cindy Powers

Wrestling, Mining City
(406) 498-6508
Levi Queer / Matt Stepan

Young Musicians of Butte
(406) 490-1537
Tom Patton



REGIONAL OUTDOOR OPPORTUNITIES



Brown Trout Caught on Jefferson River (pic provided by Bill Melvin)

BIG HOLE RIVER

Big Hole River – The Big Hole River, a quick 20 minutes south of Butte, is the first choice of any area angler. With its wide variety of hatches and abundance of public access, a skilled angler will have the opportunity to land rainbows, browns, cutties, brookies, Whitefish and the elusive Arctic Grayling.

JEFFERSON RIVER

One of the three rivers that come together to form the mighty Missouri, the Jefferson River, 30 miles east of Butte is another local favorite. The river travels through one of Montana's most picturesque valleys and can produce some outstanding fishing under the right conditions.

BEAVERHEAD RIVER

Southwest of Butte and easily accessible via I-15, the Beaverhead River produces more large trout than any other river in Montana.

GEORGETOWN LAKE

Northwest of Anaconda on the way to Philipsburg, Georgetown Lake offers spectacular views and an abundance of recreation opportunities from water skiing to fishing. Nestled in the scenic Pintler Mountains, Georgetown Lake is a must experience for any visitor.

EAST FORK RESERVOIR

Offers postcard level beauty and seclusion an hour from Butte. A perfect location for an outdoor enthusiast to fish, hike, camp or just revel in Montana's spectacular outdoors.

FLINT CREEK

Flowing out of Georgetown Lake and located in the Philipsburg Valley, Flint Creek offers a range of fishing and camping opportunities. The fishery is dominated by brown trout, so make sure to swing your flies deep under the frequent cut banks.

ROCK CREEK

World famous for its unmatched beauty and astounding stonefly hatches, Rock Creek is an anglers' paradise. Meandering between the Sapphire and John Long Mountains, the majority of Rock Creek flows through National Forest land and public access is plentiful. If you enjoy fishing, Rock Creek is a must for your visit.

HOMESTAKE LAKE RECREATION AREA

Located at the top of Homestake Pass on I-90, just east of Butte, Homestake Lake area offers fishing and great access to trails for hiking, biking and motorized off-road vehicles. This area is designated day-use only and there is no overnight camping allowed.

BOULDER RIVER

20 minutes north of Butte on I-15, it flows 77 miles southeast to Cardwell where it meets the Jefferson River.

CLARK FORK RIVER

One of Montana's most well-known rivers, the Clark Fork was named for famed American explorer William Clark and is the Headwaters of the Columbia River. It flows from below Butte all the way to the Pacific Ocean. There are access opportunities from outside Anaconda stretching west to Missoula and beyond.

WARM SPRINGS PONDS

Wildlife Management Area/Warm Springs Creek – 21 miles west of Butte on I-90, this area features abundant hiking, biking, bird hunting, fishing and shooting opportunities. The many ponds are known to produce very large trout and one is designated just for children. Make sure to check your fishing regulations prior to casting a line for further information.

SHEEPSHEAD/MANEY LAKE

20 miles north of Butte on I-15, offering picnicing, fishing, hiking, volleyball courts, horseshoe pits, a one stop shop for a perfect day out. The area is designated day-use only. Pavilion areas can be reserved through the Forest Service. www.recreation.gov.

HUMBUG SPIRES

Located on BLM land in the Humbug Wilderness Study area. This is a popular area for climbers, so listen and look for people climbing. To get there, head south on I-15, take the Moose Creek exit. Turn left off the ramp and drive, under the highway and east, for approximately 3 miles. The trailhead is identified and has toilet facilities.

SILVER BOW CREEK

After the State of Montana completed an internationally acclaimed environmental restoration of the Silver Bow Creek channel and floodplain, the area now boasts an abundance of recreation opportunities. As the headwaters of the Clark Fork River, the creek offers a rebounding fishery of Native West Slope Cutthroat Trout, a paved trail for walking and biking and numerous picnic facilities.

HARRISON LAKE

Located one hour east of Butte, boating and fishing may be enjoyed. Harrison Lake Rainbow Trout average between 16" and 19" with larger fish common. With Willow Creek Canyon nearby, fishermen can combine fishing on the lake and great small-stream fly fishing on the same trip.

WES-TECH VINYL FENCE



- VIRTUALLY MAINTENANCE FREE - NEVER NEEDS PAINTING
- LIFETIME LIMITED WARRANTY
- CHOICE OF STYLES & HEIGHTS
- SELECTION OF COLORS

XCEL ORNAMENTAL STEEL FENCE



- NON-WELDED • POWER COATED
- ZERO MAINTENANCE
- FAST ASSEMBLY
- COST EFFECTIVE
- LIMITED LIFETIME WARRANTY

Continental Fence

2601 Lexington • 782-4158 • FAX 782-1556 • 8am-5pm Mon.-Fri.

Sole Searching for Summer?



301 S. Arizona St.,
Butte, MT 59701

406.782.1306

LEWIS & CLARK CAVERNS

Open all year and offers tours of the cave from May 1 through September 30, with Holiday Tours in December. Activities and amenities include camping, biking, hiking, bird watching, fishing, camp host, RV hookups, and more. stateparks.mt.gov

LOST CREEK STATE PARK

Located 1.5 miles east of Anaconda on Montana 1, a short hike will allow you to view Lost Creek Falls, cascading over a 50-foot drop while scanning the cliffs above for bighorn sheep, mountain goats and golden eagles. Camping, fishing, picnicking, biking, and hiking are available. stateparks.mt.gov

SKALKAHO PASS

The Skalkaho Highway is a 45-mile drive that runs between the Bitterroot Valley and the Philipsburg Valley. Highlights of the drive include the Sapphire Mountains, Skalkaho Falls, great views of the Philipsburg Valley and excellent camping.

PINTLER WILDERNESS AREA

Covering over 158,000 acres, the Anaconda-Pintler Wilderness Area is west of Anaconda and has access from major highways on the east, south and west. It is known for its high, rugged and beautiful mountain scenery, including dozens of alpine lakes, with elevations ranging from 5,100 feet to 10,700 feet. The diversity within the area is astounding, with a mix of cross-country skiing, backpacking, hiking, fishing, and horse packing.

PIONEER SCENIC BYWAY

This 49-mile route runs from Wise River to Highway 278 west of Dillon transversing the West Pioneers and the East Pioneers and offers unparalleled access to mountain wilderness, remote lakes, hiking, camping, and fishing. Bike riders have the best of both worlds, with a well-paved road traversing mountain country and access to miles of mountain biking opportunities.

CARE FOR ALL GENERATIONS

Your greatest wealth?
Good health.



CHA COMMUNITY HOSPITAL
OF ANACONDA

401 W. Pennsylvania | Anaconda | (406) 563-8500 | www.communityhospitalofanaconda.org

TRIPLE CROWN
AWARD WINNING
CARE

TOP 100
CRITICAL ACCESS HOSPITAL
IVANTAGE HEALTHSTRONG

TOP 100
GREAT COMMUNITY HOSPITAL
BECKER'S HOSPITAL REVIEW

BEST PRACTICE
RECIPIENT-QUALITY
NATIONAL RURAL HEALTH ASSOCIATION



Bikers on Whiskey Gulch Trail

THE COPPERWAY & BUTTE HERITAGE PARK TRAILS

A network of non-motorized trails links a variety of cultural sites. Other trail networks include Thompson Park and Big Butte that provide natural area opportunities for bird watching and viewing wildlife while providing non-motorized hiking, mountain biking and horseback riding opportunities.

CONTINENTAL DIVIDE NATIONAL SCENIC TRAILS (CDNST)

4 to 14-mile hikes, from moderate to difficult can be accessed within 30 miles of Butte on the CDNST. This trail, which travels around Butte like a horseshoe, provides panoramic views of distant mountain ranges, forested landscapes, and remnants of historic mining and logging activities that supported Butte's mines.

WHITETAIL-PIPESTONE (BLM AND FOREST SERVICE)

Challenging trails and great vistas can be found in the Pipestone area between Butte and Whitehall. Off-highway vehicle enthusiasts can find fun and excitement in the 30,000-acre area which boasts more than 100 miles of trails that will provide challenges to novice and experienced riders.

RINGING ROCKS

This unique geological formation is located in the Pipestone area (take exit 241 off I-90). The rocks in this area chime when tapped lightly with a hammer. However the unique tones of the rocks do not occur when removed from the site. This is an area of critical environmental concern and removing rocks is prohibited.

For more information on regional outdoor opportunity, visit these sites.

blm.gov

fs.fed.us

stateparks.mt.gov

fwp.mt.gov

visitmontana.com

butteparksandrec.com

In Step With Your Healthcare Needs.



The Southwest Montana Community Health Center (SWMTCHC) has been serving southwest Montana by providing medical, dental, behavioral health and pharmacy services to people of all ages since 1986.

HOURS OF OPERATION

Butte Medical Clinic

Mon-Fri 8am to 7pm • Sat 8am to 5pm, closed 12-1pm on Thurs.

Butte Dental Clinic

Mon-Fri 8am to 5pm, closed 12-1pm on Thurs.

Butte Pharmacy

Mon-Fri 9am to 6pm • Sat 9am to 5pm, closed 12-1pm on Thurs.

Dillon Medical

Mon-Fri 8am to 5pm, closed for lunch hour.

Dillon Dental

Monday, Tuesdays and Thursdays 8 am to 5 pm

Mac's Pharmacy, located in Sheridan

Mon-Fri 9am – 5:30pm

Come Stay at one of Butte's Best Hotels

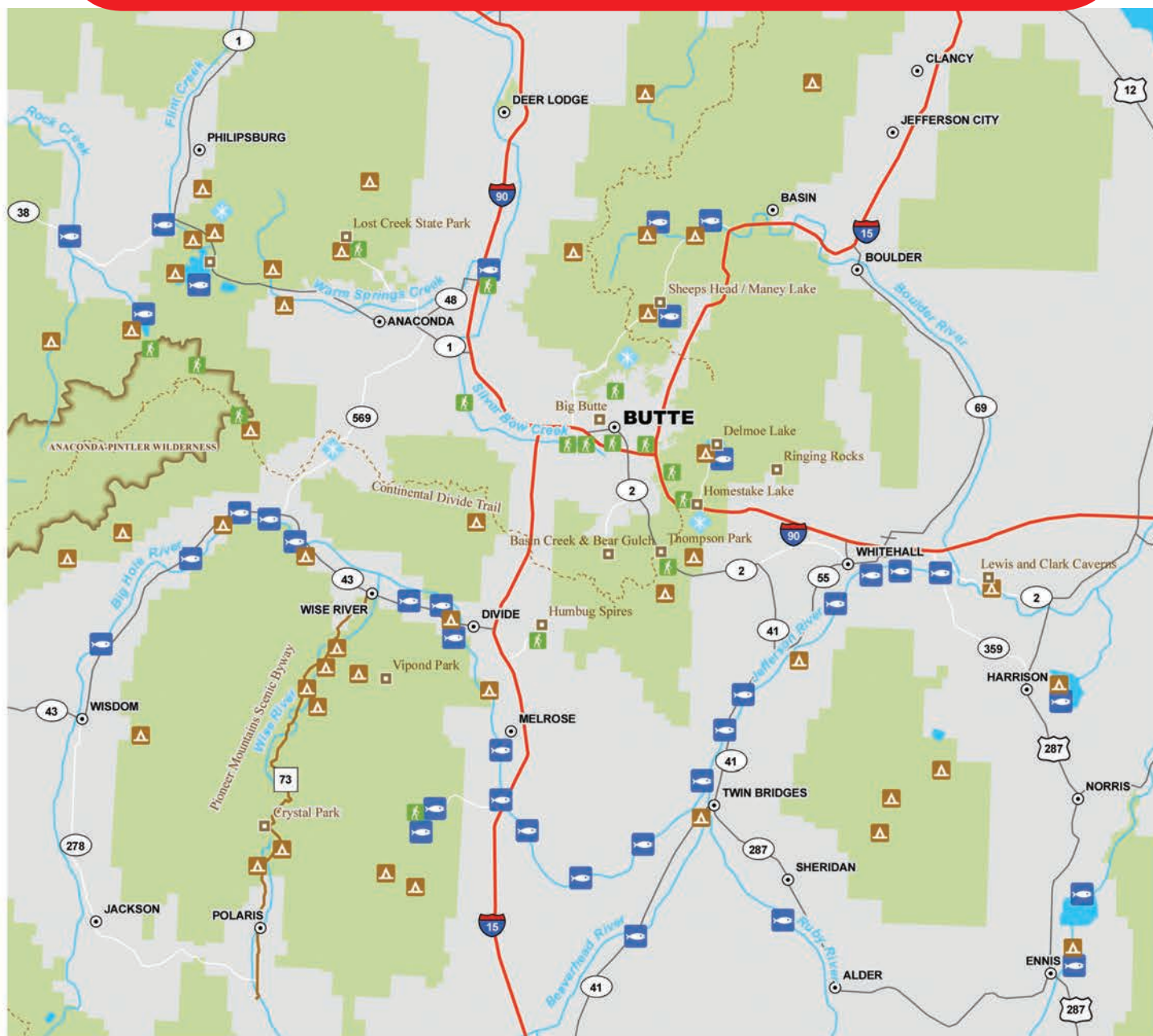


2609 Harrison Ave – Butte
Reservations 406-782-2000

Your Stay Includes:
Business Service
Health & Fitness Center
Indoor Pool and Spa
Free Breakfast



RURAL AREA MAP



- City or Town
- Point of Interest
- ❄ Winter Recreation
- 🐟 Fishing Access
- 🥾 Trailhead
- ⛺ Campground
- Continental Divide Trail
- Pioneer Mountain Scenic Byway
- 🌊 River
- 🌊 Lake
- 🌿 Federal Land



Parks & Recreation:
butteparksandrec.com

Trails & Outdoor Recreation:
butteparksandrec.com
avenzamaps.com

Nearby Hiking & Walking Trails:
fwp.mt.gov

FishMT:
fwp.mt.gov

FESTIVALS & SPECIAL EVENTS

ARTWALK

May-October: The summer artwalks occur the first Friday of each month. Several Uptown stores and restaurants will join in the event and stay open on these evenings for the shopping convenience of their customers and to add to the festivities. Visit the facebook page www.facebook.com/uptownbutteartwalk or contact Judy Funk Andrews, 431-0958.

BUTTE FARMER'S MARKET

May 18-October 5: The Butte Farmer's Market will return for 21 summer Saturdays from May 18th through October 5th from 8am-1pm. on Park street between Montana and Main. mainstreetbutte.org

JON'S GULCH WILDFLOWER WALK AT THOMPSON PARK

June 1, 9:30 AM: Join the Beaverhead-Deerlodge National Forest for a walk through the woods exploring the blooming colorful flowers. This year we are excited to have both a botanist and pollinator to guide this hike through Thompson Park. 494-2147

ROCK THIS CITY



Volunteers at Rock This City

June 17-23: What does it look like to love and serve right where we live? It Looks Like Rock This City! Last year citizens of our beautiful community came together to serve 897 hours in 7 days. This power-packed week is hosted by Fresh Life Church. We work with incredible local organizations already making a difference. Making a loud and resounding impact here at the Richest Hill on Earth. This creates a ripple effect into the year as we continue to intentionally serve, love, and build unity on our city.

Rock This City is family-friendly and there's something for everyone! If you are interested on joining us to clean our

neighborhoods, serve local non-profit organizations and make a lasting difference in our community, please visit us at outreach.freshlife.church or on facebook at Fresh Life Church-Butte

COVELLITE INTERNATIONAL FILM FESTIVAL

September 19-23: The fourth Covellite International Film Festival will be screening over 100 films from June 19th through June 23rd. Come enjoy films from all over the world, meet filmmakers, attend workshops, panels, and after-parties in some of Butte Montana's many historic venues. covellitefilmfest.com

MUSIC ON MAIN

June 27 - August 29: The M&M Bar, Metals Bank Sports Bar, Silver Bow Developmental Disabilities Council and NorthWestern Energy are proud to present the Music On Main concert series in Uptown Butte. Music On Main will be located on Main Street between Park and Broadway. The fun will last from 5pm-9pm on Thursday evenings from June 27-August 29.

COLT ANDERSON'S "DREAM BIG MONTANA EXPERIENCE"

June 27-28: The Colt Anderson Dream Big Foundation will host a series of events over a two-day period. Those events will include a skills camp, a speaking engagement, a free kid's day full of activities and experiences, and a gala with amazing live and silent auction items. These events are all planned and organized with the idea of providing resources and experiences that will encourage our youth to find passion to invest in their own future. Along with Colt, there will be other professional athletes and entertainers at each event to help inspire and motivate the kids to work hard and "DREAM BIG." dreambigmontana.com.

BIG BANG FREEDOM FESTIVAL

July 3-4: Butte is home to Montana's most spectacular fireworks display firing from the top of Big Butte, the evening of July 3rd. Watch the fireworks from Chester Steele Park at the Big Bang Freedom Festival and enjoy live music and vendors. mainstreetbutte.org

The celebration continues on July 4th with Montana's best attended 4th of July Parade which runs on Harrison Avenue beginning at 10:00 a.m. Get there early to claim your spot along the parade route! For information to participate in the parade go to butteamericafoundation.org

MONTANA FOLK FESTIVAL



July 12-14: The Montana Folk Festival returns to Uptown Butte for its ninth presentation this July 12, 13 and 14. After three years as the National Folk Festival from 2008-2010, this will be the 12th presentation of this much anticipated event.

The festival is a three-day celebration of traditional music, dance, arts and ethnic cuisine. Admission to all is free for all performances.

The festival is one of the largest free of admission outdoor events in the Northwest, attracting well over 150,000 attendees each year from throughout Montana and surrounding states.

While admission to all performances is free of charge, attendees are encouraged to consider a suggested \$20 contribution each day of the festival weekend or \$25 for families each day to keep the festival free in future years.

In 2019, the festival will include multiple stages featuring the talents of more than 200 artists presenting music and dance performances and moderated talk/demonstration sessions, a Dance Pavilion, a Family Area, a Montana Folklife Area, regional and ethnic foods, and a festival folk arts market and the First Peoples' Market that features the creative works of the region's Native American artists.

The musical lineup, when announced in the spring, will be available at the festival web site at montanafolkfestival.com and on facebook at facebook.com/mtfolkfest.

The festival will also feature the popular Montana Folklife Area with demonstrators to emphasize and interpret a selected theme that shines a light on an aspect of Montana's heritage and lifeways. In 2019 that theme is A Celebration of Women's Work -- The Feminine Influence on Montana and the West.

Anyone interested in sponsorship opportunities or

contributing in any way to ensure that the festival continues in this and coming years can visit the festival website for more information or they can send tax-deductible contributions large and small to Montana Folk Festival, P.O. Box 696, Butte, MT 59703 or through a festival Gofundme.com campaign page at gofundme.com/2019MFF. Look for details as they develop at montanafolkfestival.com or on the festival's Facebook page at [mtfolkfest](https://facebook.com/mtfolkfest).

BUTTE 100 MOUNTAIN BIKE RACE

July 27th: This nationally recognized Butte 100 mountain bike race includes 25-, 50- and 100-mile all off-road races that draw professionals and amateurs alike. It is described as "the most difficult mountain bike race in the country." The race starts and finishes at Homestake Pass and travels along the Continental Divide National Scenic Trail. For more information contact Len Janson at **775-224-9238** or butte100.com.

COUNTY FAIR

August 1-3: The 2019 Butte-Silver Bow County Fair will be held August 2nd thru August 4th at the Butte Rodeo Grounds. The Butte Vigilante Rodeo Club will sponsor a rodeo Friday and Saturday nights with music following both nights. We look forward to the always popular 4-H Auction along with other events. John Sorch, **491-7767**.

AN RÍ RÁ



August 9-11: August 9, 10, 11: The 2019 An Rí Rá Montana Irish Festival will take place on August 9 -11th at the Original Mine Yard. This will be the 17th annual An Rí Rá, and the event is FREE admission to the public. The An Rí Rá has gained recognition in the Irish world as a premier event of Irish culture, music, and dance. The festival features world-class entertainers from all over the United States and Ireland as well as regional Irish

performance groups and dancers.

The festival provides a family-friendly atmosphere that has activities for all ages. There are also many cultural and educational activities that take place during the weekend. The entertainment scheduled for the festival has performers coming from all over the world. A press release will be coming early spring with the list of confirmed performers for the festival.

The festival grounds will have food vendors, arts and crafts vendors, and a beer garden and other amenities for festival-goers. Come and take part in the most Irish weekend found anywhere in the Pacific Northwest in the most Irish city in America!

For more information and the upcoming release of performers for the 2019 festival, please visit our website at mtgaelic.org or call Brendan at **498-3983**.

MT SHAKESPEARE IN THE PARK

August 17th: Butte Parks and Recreation and Montana Shakespeare In the Park presents "Henry IV part 1 - The Merry Wives of Windsor @6pm at Stodden Park. Call **497-6535** for more information.

BIG BROTHERS AND SISTER OF BUTTE BREWFEST AND CAR SHOW



Car Show Display

August 24th: Join Big Brothers and Sisters of Butte and the Copper City Gear Jammers at the Original Mine Yard for great music, local brews, car show, food vendors, raffles, 50/50, children's area and more. Admission is FREE! Contact Mandi at **782-9644** or Brodie **498-8840** for more info.

BUTTE-TOBERFEST

September 14: The 11th annual Butte-Toberfest will be held Saturday, September 14th, at the Original Mine Yard. This year's Butte-toberfest features 15 breweries, each bringing multiple beers to taste, a kid's area, Stein races, ethnic food and live music, a best-dressed contest and more! All proceeds go to the Silver Bow Developmental Disabilities Council. Only 1500 glasses sold, **DON'T MISS IT!** Todd Hoar, **723-2070** or buttetoberfest.org.

CIVIC CENTER WINTER BAZAAR

November 23-24: The annual Winter Bazaar will be held at the Butte Civic Center Saturday, November 23rd 9:00am-5:00pm & Sunday, November 24th 11:00am-3:00pm.

Over 90 vendors pack the Civic Center to showcase their products. This event is open to all businesses, artists, crafters and bakers. butteciviccenter.com

ELITE PROFESSIONAL BULL RIDING

January 24-25: The Butte Civic Center will be rocking when the EPB Finals take place on January 24-25, 2019. The top-ranked bull riders in the area will compete during this 2-day event, riding some of the best stock in the area. butteciviccenter.com

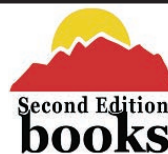
BUTTE'S BEST BREAKFAST?

Gamer's Got It
The Best Ham
The Best Bacon
The Best Sausage
The Best Chicken Fried Steak
Guaranteed
We got a pretty good burger, too.

Lunch
Mon-Sat 7-2 & Sunday 8-2

GOOD FOOD
GAMER'S
GOT IT!
15 West Park • 723-5453

Gamers
Cafe



MONTANA'S BEST USED BOOKSTORE

112 S. Montana | Butte, MT
406-723-5108 | 800-298-5108
Mon. - Sat. 9:00-5:30

Western and Native Americana, Music,
Mining & Geology, Children's Books & More

Something for everyone!

Family Owned Since 1985
in Historic Uptown Butte
www.secondeditionbooksbutte.com



YAMAHA,
ARCTIC CAT, CFMOTO,
KAWASAKI, SUZUKI, ROXOR,
SKIDOO AND HUSQVARVA.

STAACK'S MOTOR SPORTS

Butte MT • 406-782-2623



First Citizens
Bank of Butte

Your ONLY Locally
Owned and Operated bank

Get Out & Enjoy All
Butte Has To Offer

- Deposit and Loan Products
- Competitive Rates
- Online Banking App
- 24-Hour Customer Service
- Local Decisions
- Local Solutions

3220 Harrison Avenue • (406) 494-4400
www.fcbbob.com

SNOFLINGA

January 16-20: Celebrate everything winter! Snoflinga is Montana's winter festival and it's free to the public! Join us in Butte every January to celebrate winter, get outside, be active, and celebrate community. Explore the vast winter options in and around Butte during the festival weekend complete with music and local vendors. Check out events such as: ice skating, cross country skiing, a fun run, fat tire biking, hockey, snow-shoeing, ski-joring, avalanche classes, ski/snowboard skill sessions, and winter films. Contact snoflingamt@gmail.com or **Jenny at 208-221-1391**.



Bjorn the Bear at Snoflinga

*Your Bank,
Our Community*

*Help Each Other...
Understand Each Other...
Serve Each Other...*



**1880
Harrison Ave
Butte
497-7000**

**3701
Harrison Ave
Butte
494-3900**



www.glacierbank.com



An Rí Rá Montana Irish Festival 2019

**The Original Mine Butte
Montana**

August 9, 10, 11, 2019

FREE ADMISSION

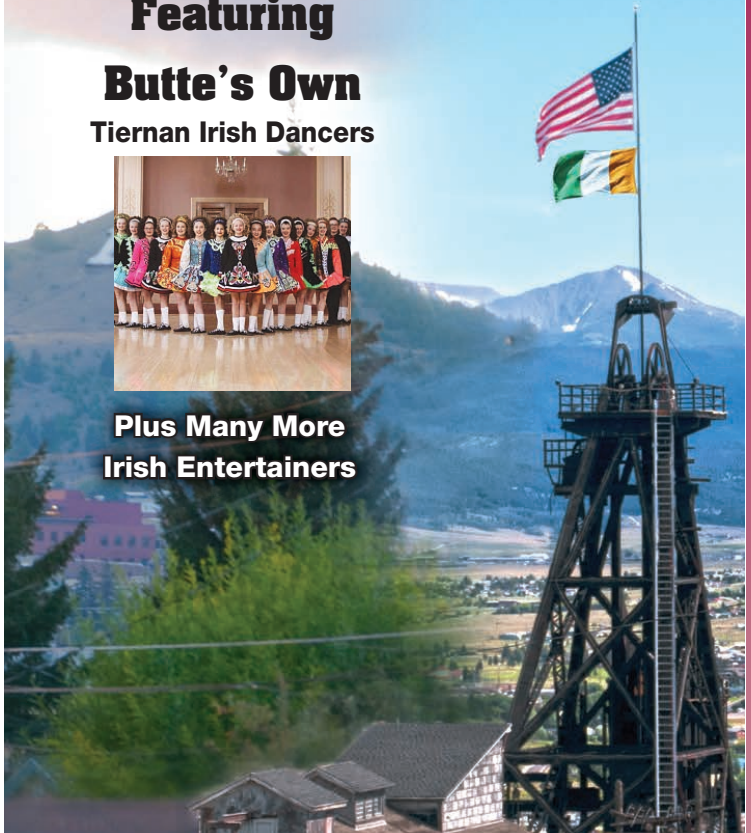
Featuring

Butte's Own

Tiernan Irish Dancers



**Plus Many More
Irish Entertainers**



The festival provides a family-friendly atmosphere that has activities for all ages. There are many cultural and educational activities that take place during the weekend. We have performers coming from all over the World. Come take part in the most Irish weekend found anywhere in the Pacific Northwest in the most Irish city in America.

Tickets are 1 for \$5 or 6 for \$25

Tickets sold at the Festival or Contact
Mary K. Maloney at 406-560-41011, or
email mkmaloney519@gmail.com

PARADES



Bagpipers marching in the St. Patrick's Day Parade.

ST. PATRICK'S DAY PARADE

St. Patrick's Day Parade, sponsored by the Butte America Foundation. Contact: Matt Boyle, **498-3549**

4TH OF JULY PARADE

The Fourth of July Parade, sponsored by the Butte America Foundation. Contact Matt Boyle **498-3549**

THE CHRISTMAS STROLL

The Christmas Stroll on December 6, 2019 is the first activity of the Winter Blast. The Christmas Stroll features a children's light parade, a public appearance by Santa Claus and the official lighting of the uptown lights. Come Uptown for an evening of Christmas Cheer and shopping. mainstreetbutte.org

THE MAI WAH CHINESE NEW YEAR

Saturday, January 25, 2020: 2020 is the "Year of the Rat". Described as the shortest, loudest, and coldest parade in Montana, the Mai Wah Chinese New Year Parade snakes through uptown Butte. Follow the dragon as it stops to bless sponsor businesses along the route from the courthouse to the Mai Wah Museum. The parade starts at 3:00 p.m. Contact Pat Munday if you would like to have your business blessed. **565-1826**



Chinese New Year Dragon

COMMUNITY PARTNERS



BUTTE 100

Saturday, July 27th, 2019: Welcome to the most difficult mountain bike race in the country: The Butte 100 race weekend consists of three individual races, a 100 mile, a 50 mile, and the Sorini 25 mile, taking place atop the Continental Divide just outside of Butte, Montana. The race has grown from a small group of dedicated locals on a gravel road, to world-class athletes competing on world-class trails. With outstanding partnerships with the USFS, BLM, community of Butte, our generous sponsors, and the “neon army” of volunteers, the Butte 100 race continues to provide the best mountain bike racing experience possible. Contact Len Janson **775-224-9238** Lenjanson@Butte10.com

BUTTE SPECIAL RIDERS

Since 1989 Butte Special Riders has provided a therapeutic horseback riding program for children with disabilities. The children are between the ages of 3 and 18, and come from Butte and surrounding counties. Our program serves between 35 to 40 children per year and we hold two riding sessions in June and July on Monday mornings. Volunteers are needed as side walkers or leaders of horses. Experience with horses is not required, and training is provided. Our program is accredited through the Professional Association of Therapeutic Horsemanship International (PATH). Contact Joani Kissock at **490-2612** or Barb Gray at **490-1715**.

HIGHLANDS CYCLING CLUB

Our mission is to connect the cycling community and sustain trails across South West Montana. Facebook at Highlands Cycling Club – Bike Butte.

Mission Statement: To promote Stodden Park and all parks, recreational lands, and forestry in the community of Butte, Montana and Silver Bow County.

FRIENDS OF STODDEN PARK

The “Friends of Stodden Park” is a non-government entity of Butte residents that contribute to all of Butte-Silver Bow Parks and Recreation’s amenities.

Butte residents have benefitted greatly with the generous time and commitment that the “Friends of Stodden” Park have demonstrated. The “Friends” successfully directed the campaign to help pass the bond in 2016 that financed Ridge Waters, Montana’s newest water park. This group believes every child in our community should be able to enjoy this wonderful facility. In 2018, the Friends sponsored over 400 youth passes that helped residents in low-income households enjoy Ridge Waters on hot summer days.

Since the “Friends of Stodden Park” is a 501(c)3, your donation is tax deductible.

If you would like to be a sponsor or donate to the “Friends of Stodden Park”, **497-6578** or friendsofstodden.org.



Friends of
Stodden Park

BACK COUNTRY HORSEMEN OF MT

The purpose of the Back Country Horsemen of Montana is to perpetuate the common sense use and enjoyment of horses in America’s back country and wilderness. To work to ensure that public lands remain open to recreational stock use. We assist various agencies responsible for the maintenance and management of public lands. To educate, encourage, and solicit active participation in the wise and sustained use of the back country resources by horsemen and the general public. bchmt.org

ROCK THIS CITY

Rock This City works with incredible local organizations already making a difference in our community. If you are interested in cleaning up our neighborhoods and making a lasting difference in Butte please visit us at **outreach.freshlife.church** or on facebook at Fresh Life Church-Butte

BUTTE-SILVER BOW ANIMAL SHELTER

Summer is the perfect time of year to enjoy the outdoors with your pets! The Butte-Silver Bow Animal Services Department has a few reminders to ensure you, your pet's, and the community's safety.

All dogs residing in Butte-Silver Bow are required to have a current rabies vaccination and county dog license. Licenses are sold at the Animal Shelter and rabies vaccinations can be given by your local veterinarian.

When your pets are at home be sure they are secured on your property with plenty of fresh clean drinking water and have a shelter to get out of the sun. If it is an extremely hot day, we recommend you leave your pet indoors where they can stay cool.

Animals should never be left in a vehicle for any length of time during warm or cold temperatures. This can cause serious health issues for your pet. Even with the windows open, a vehicle will still get dangerously hot for pets.

Butte-Silver Bow requires that all dogs be secured on a leash when out for a walk within the BSB fire district. There are trail systems throughout Butte that offer safe and scenic paths that can be enjoyed with your pups as long as they are secured on a leash.

However, if you would like to enjoy some off leash time with your dog, Skyline Park offers several secure "off leash" areas within the park. Please keep your dog leashed at the park until you are securely in the off leash area. Thompson Park is another beautiful space that allows dogs to be off leash under supervision. As for the other parks in Butte, dogs are not permitted to be in these parks.

Last, if you are attending the festivals in town, remember dogs are not allowed at these events, so please leave them home where they are comfortable and safe.

If you have any questions or concerns regarding animals, please contact the Butte-Silver Bow Animal Services Department at **497-6525**.

Thank you for keeping your pets safe and happy. Hope you have a great summer!

BUTTE SCHOOL DISTRICT #1

Butte School District #1 is made up of six elementary schools, East Middle School, and Butte High School.

For information about any clubs or activities, whether during the school year or during the summer, contact the Butte School District #1 office at **533-2548**.

BUTTE CENTRAL SCHOOLS

Butte Central Catholic Schools offers elementary, middle school and high school opportunities.

For high school athletics/activities, call **782-8084**.

For junior high athletics/activities, call **782-4500**.

RAMSAY SCHOOL

Located 10 miles west of Butte, Ramsay School serves kindergarten through eighth grade students.

For information on programs, call **782-5470**.

MONTANA TECH

Look no further than Montana Tech for a great college atmosphere, and an education that the Princeton Review lists as one of the best among undergraduate institutions education. Wall Street Journal cites Montana Tech as a Top 10 return on Investment for Public Colleges and SmartAsset ranks Montana Tech as the best value college in Montana, and number 18 in the country.

Montana Tech has 13 campus buildings and offers over 70 undergraduate degrees along with 18 minors, 14 certification degrees and 10 professional career programs. Tech also offers 21 graduate degrees and a Ph. D. in Materials Science. **mtech.edu**

BUTTE-SILVER BOW PUBLIC LIBRARY

The Butte Public Library provides a variety of suitable materials, services and programs to meet the informational needs of the community members of all ages.

The library offers Book Clubs, Fab Lab, Loosely Knit Club, Excel Series, Butte Garden Club, Butte Seed Library, Story Time, Coloring for Adults, Computer Classes, Mad Scrappers, Chess Club, Family Movie Matinee and more. Call **723-3361** or visit **buttepubliclibrary.info** for information and our event calendar.

BUTTE SOCCER CLUB



The Butte Soccer Club strives to:

- Develop skilled, confident and creative players
- Make the game fun in practice and play
- Teach good sportsmanship and respect for all
- Value competition but not more than character & performance
- Provide a safe & educational experience through guided discovery coaching

The spring season starts the beginning of April and runs through the middle of June. The games are held around the state on Saturdays and wrap up with tournaments held on weekends. Being a volunteer organization, we encourage parents to get involved with coaching, refereeing, concessions, etc.

Player Fees:

Ages 9-10 years is \$100 plus cost of uniform.

Ages 11-18 years is \$200 plus cost of uniform.

To register or for more information please contact:

Pam Sholey at **565-0873** or sholeypam@yahoo.com and visit miningcityfc.com

WOMEN'S FLAT TRACT DERBY ASSOC.

Butte is home to two roller derby teams that compete in the Women's Flat Track Derby Association.

The Copper City Queens, Inc., is Butte's non-profit Women's Flat Track Derby Association roller derby team. Though only women compete, men are invited to join the team to serve as referees. Men and women age 18 and older are invited to join the team for fitness, community service and fun. For information contact coppercityrollerqueensrollerderby@yahoo.com.

Butte - Silver Bow Trolley Tours



TO MAKE YOUR RESERVATIONS TODAY OR
FOR MORE INFORMATION PLEASE CONTACT

The Butte Chamber of Commerce

1000 George St. | 406.723.3177

TOURS ARE AVAILABLE

MAY - SEPTEMBER

Monday - Saturday

10:00 | 12:30 | 3:00

Sunday

10:00 | 12:30



BUTTE
CHAMBER OF COMMERCE
www.buttechamber.org

Quad City Misfits

The Quad City Misfits have members from Butte, Anaconda, Deer Lodge and Philipsburg. They are a non-profit roller derby team who donate their time and portions of their profits to local charities.

For information find us on facebook, Quad City Misfits or call Christina Bledsoe, **560-3233**.

BUTTE PICKLEBALL



Pickleball is the fastest growing sport in America. It has similarities to both tennis and table tennis. From spring to fall, play is offered at three outside locations, Whittier School, Father Sheehan, and Stodden Park. Winter play is available in the mornings and evenings at the Civic Center Annex. Visitors and beginners are always welcome and we offer to schedule lessons upon request. Go to our site for all Butte Pickleball action. **Buttepickleball.com**

CAR CLUBS

Copper City Gear Jammers. The mission of the Copper City Gear Jammers is to promote the sport and hobby of owning, altering and building classic cars, hot rods and custom cars. We encourage family participation, promote friendship and help fellow clubs and organizations by attending their functions. Our annual car show will be held at the Original Mine Yard on August 24th at the Original Mine Yard and all proceeds go to support our local communities and charities. Brody Hackman, **498-8840**, bhfabrications1@gmail.com

Pioneer Street Rods

The purpose of the Pioneer Street Rods is to bring together people who own or are interested in owning, restoring and showing street rods and classic cars. The Pioneer Street Rods is a proud sponsor of Wednesday Night Cruise Nights which are hosted at different locations in the area throughout the summer. For information call Tony Patrick, **494-5243**.

DANCE GROUPS & WORKSHOPS

Mining City Dance Company

491-8485
www.krowe31.wix.com/missksdance

Dynamic Dance Company

498-6270
dynamicdanxeco.com

5-6-7-8 Dance

490-4980
5-6-7-8dance.com
Adults Only

Montana Dance Works

299-2381
montanadanceworks.com

B'z On The Edge-Deanna Worley

490-8143

Little Steps Dance Troupe

593-2523
LittleStepsDanceTroupe@yahoo.com

Tiernan Dance-Cindy Powers

494-1203
tiernanbutte.com

GEORGE GRANT CHAPTER OF TROUT UNLIMITED

The mission of the George Grant Chapter of Trout Unlimited is to preserve, protect and restore the wild trout fisheries of Southwest Montana. We are proud to call the Big Hole River, Beaverhead River, Jefferson River, and the upper Clark Fork River, along with Georgetown Lake our home waters. Headquartered in Butte, Montana, we pride ourselves on being a conservation organization representing the interests of anglers. We work closely with local Montana Fish, Wildlife and Parks Fisheries Biologists to improve fisheries throughout our area and to look for project opportunities. Roy Morris, **491-4255** Mark Thompson, **593-1058**

**Call us for all your
EAR, NOSE, THROAT and
ALLERGY needs.**

Neal Rogers M.D.
202 South Montana Street | Butte, MT 59701
406-723-6526

DIVIDE CREEK P.C.

**PORK CHOP
JOHN'S**

Home of the original
pork chop sandwich

8 W. Mercury • 782-0812
2400 Harrison Ave • 782-1783

MILE HIGH NORDIC SKI EDUCATION FOUNDATION

The Mile High Nordic Ski Education Foundation is an all-volunteer group that maintains ski trails near Butte and Anaconda. The foundation and Homestake Lodge provides coaches for all levels and rental equipment is available at Homestake Lodge for the season.

Younger skiers focus on classic technique and getting comfortable on skis while playing games and learning basic skills. Older skiers add skate skiing to their practices. There are also opportunities for those who want to race.

For programs and events go to milehighnordic.com

MINING CITY DISC GOLF

Mining City Disc Golf Club represents the growing sport of disc golf in Butte. MCDG holds weekly league events as well as hosts tournaments and other competitive events that attract players from all over Montana. As MCDG continues into the future, we will further our mission of "Growing the Sport" with community involvement, improving existing courses, hosting benefit and fundraising events, and hosting special clinics that introduce new players to one of the fastest growing sports in the world.

Find Mining City Disc Golf Club on:

Facebook: www.facebook.com/MiningCityDiscGolfClub

Twitter: @MiningCityDGC

Email: miningcitydgc@gmail.com

Information **497-6535**

SILVER BOW COUNTY 4-H



We have two very active clubs in Silver Bow County, with members participating in lots of activities during the summer. During the summer, our 4-H program focuses on community service, hosting a 4-H camp in June, and finishes with the Butte-Silver Bow County Fair August 1-3. Kellie, **723-0217**

RUNNING CLUBS

The P & M Runners are a loosely organized group of avid runners of all ages. The group maintains an e-mail list with more than 100 members, who receive updates on local races and group run opportunities. The group runs are generally on Tuesday evenings and Saturday mornings. Distances and terrain vary as the group incorporates trails and roads. The events the club hosts are organized entirely by volunteers, and the proceeds are returned to the Butte area trail system and various not for profit agencies.

The P and M Runners are pivotal in organizing the Wulfman's Continental Divide National Scenic Trail 14k trail race. The 14 "Butte-iful" kilometers are run along the CDNST between Montana's Homestake and Pipestone passes in Beaverhead-Deerlodge National Forest.

This race along that route celebrates the trail and the memory of one of its greatest local proponents – the late John Wulf, "the Wulfman," who was the godfather of Butte's Piss and Moan Runners. The race is run on Summer Solstice Saturday, the anniversary of the Wulfman's last group run. Race proceeds are used to help build and improve trails in Southwest Montana. This year's race is Saturday, June 22, 2019. Other events include the Wulfman's Frigid Digger Run held in February. For more information, visit buttepiissandmoanrunners.com or contact the club on Facebook.

Our Service Makes the Difference
...YESTERDAY, TODAY AND TOMORROW



Call Today to Schedule
On Harrison Ave. Next to Wal-Mart
406.533.3634
www.MileHighCJD.com

MILE HIGH MOTORS
BUTTE • MONTANA

Gear up for summer with car care values from Mile High CJD service department.

WORLD MUSEUM OF MINING

The World Museum of Mining was founded in 1963 when the close of Butte's mining heyday was less than two decades away. In the end, Butte experienced a century of hard-rock mining and earned the reputation of being home to one of the most productive copper mines of all time. The Museum exists to preserve the enduring history of Butte and the legacy of its rich mining and cultural heritage.

The World Museum of Mining is one of the few museums in the world located on an actual mine yard, the Orphan Girl Mine. With fifty exhibit buildings, countless artifacts, and sixty-six primary exhibits in the mine yard, visitors can spend a couple hours to an entire day lost in the unfolding story. The Museum is a family-friendly environment with a little something for all ages. A scavenger hunt helps all ages explore the museum from a different perspective. People of all ages can also try their hand at garnet panning.

By walking the streets of Hell Roarin' Gulch and venturing to the depths of the Orphan Girl Mine, you can almost see the miners' blackened faces and hear their exhausted sighs at the conclusion of the work day.

We are excited to announce that we will be offering off site mine tours. Please call for more information!

Contact Jeanette Kopf, **723-7211** or miningmuseum.org



World Museum of Mining



WHERE HISTORY TELLS A STORY

Walk the streets of Hell Roarin' Gulch and venture into the depths of the Orphan Girl Mine.

See the equipment, touch the rock, and hear the stories of the miners who worked the mines of Butte, MT.

Open April – October

155 Museum Way, Butte, MT 59701

406-723-7211

Underground Tour Reservations available online at www.miningmuseum.org
CALL FOR MORE DETAILS

"The Mountains are Calling, and I Must Go."

-John Muir



Jacquie McAdam, MPT & Owner
3718 East Lake Street
Butte, MT 59701
406-299-2450
www.coppercitypt.com

WINTER RECREATION



Skijoring at SnoFlinga

Butte and Silver Bow County is not just for summertime recreation. We also have unmatched winter recreation opportunities. From local parks being converted to ice rinks, to world-class downhill and cross country skiing, we get outside year round.

SNOFLINGA

SnoFlinga: Montana's Winter Festival, is a celebration of everything winter. This community-sponsored event takes place in January. Events include Nordic skiing, ice skating, sledding, curling, snowshoeing, CrossFit, fat biking, a rail jam, skijoring and more. The festival takes advantage of the best facilities that Butte has to offer, such as Homestake Lodge, the High Altitude Skating Center, Foreman's Park, the Community Ice Center, Skyline Park and our extensive urban trail system. This is a free event and everyone is encouraged to participate. Live music, vendors and much more will be on hand throughout the weekend. Visit snoflinga.org



Kids Speedskating at the High Altitude Oval

ICE RINKS

During the winter months, Parks and Recreation maintains ice skating rinks at the following locations:

- **Clark Park** (lighted): The Clark Park ice rink is at the intersection of Wall Street and Texas Avenue, just east of the Community Ice Center.
- **North Main at Mullin Street.**
- **Racetrack Park** (lighted): The Racetrack Park ice rink is just south of the Racetrack fire hall on Farragut and Grand avenues.
- **People's Park at Silver and Girard Streets** (lighted): The People's Park ice rink is at the intersection of Silver and Girard Streets, one block west of Excelsior Avenue.
- **Sesame Street Park:** The Sesame Street ice rink is at the intersection of South Arizona Street and Sesame Street, a few blocks west of Harrison Avenue.

These ice rinks are open to the public at no charge. Butte-Silver Bow Parks and Recreation encourages ice skating and pond hockey on these rinks.

- **Stodden Park Skating Ribbon**
- **High Altitude Oval:** This ice rink is on Olympic Way off of Continental Drive, a former High Altitude Olympics training site, rentals are available and there is a small fee of \$2. Contact Dave Silk at **494-4018** or davidwsilk@hotmail.com
- **Ramsay Skating Rink:** The Ramsay Rink is located on Laird Street.



Enjoying one of Homestake Lodge's trails

CROSS COUNTRY SKIING

MT. Haggin: Mile High Nordic Ski Club, in cooperation with the Montana Fish, Wildlife and Parks and the Bureau of Land Management, has established and maintains nearly 28 kilometers of groomed cross country ski trails. The Mount Haggin Trails are located on Mill Creek Highway (MT 569) 11 miles south of Highway 1, near Anaconda.

Moulton: Cross-country ski trails are located north of Butte in the Moulton area and are groomed for moderate and more difficult ski opportunities. 15 km of trails are open January 1 through April 1 and are groomed in cooperation with the Mile High Nordic Ski Club. Go to milehighnordic.org for info on Mount Haggin and the Moulton trails. A map of the trails is available at the Butte Ranger District office.

Homestake Lodge: Located on I-90 on Homestake Pass, Homestake Lodge offers 35km of pristine fully groomed trails, as well of a 2km lighted ski loop. The lodge has a ski shop, kitchen, great room, couches, tables, bathrooms, and bunk rooms. homestakelodge.com

Thompson Park groomed fat tire bike trails: Enjoy your fat bike on the groomed trails at the following Thompson Park Trails.

John Gulch Trail, Eagles Nest Trail, Milwaukee Road from Sagebrush Flats to the first tunnel, Grading Camp Trail from Herman Gulch to Milwaukee Road, Herman Gulch Trail to the junction of Grading Camp.

WINTER BLAST

The 2019 Winter Blast will run from December 6th (Christmas Stroll) through December 14th. There will be an Ice Sculpting Contest with other activities to be announced. mainstreetbutte.org

**ACCEPTING
NEW
PATIENTS**

PINTLER
PHYSICAL THERAPY
& Sports Rehab

**CALL 406-563-0797
FOR AN APPOINTMENT
OR FREE CONSULTATION**

**LOCATED AT 110 MAIN ST.
ANACONDA, MT**

**40TH ANNUAL ART IN THE
WASHOE PARK IN ANACONDA!**
SPONSORED BY COPPER VILLAGE ART MUSEUM

Featuring new bands and artists.

July 19, 20 & 21

HOURS Friday - Noon to 10:00 P.M.
Saturday - 10:00 A.M. TO 9:30 P.M.
Sunday - 10:00 A.M. to 4:00 P.M.

Friday: 3-5:30 pm Ken Rich Band
6-10 pm Tim Montana
Saturday: Noon-3 pm Tom Catmull & Last Resort Band
3:30-6 pm Wane Brothers and Night Life Band
7-10 pm Steve Kelly & Cherry Cherry Band
Sunday: 1-4 pm Shodown

80 Art and Craft Booths | 20 Food Vendors

SNOWMOBILE

The Mining City Trail Riders, in cooperation with the Forest Service and Montana Fish, Wildlife, and Parks, grooms approximately 35 miles of trails in the Elk Park area. The trail system connects with other groomed trails on the Pintler Ranger District. Maps of the trails are available at the Butte Ranger District office.

DOWNHILL SKIING

Discovery Ski Area: Discovery Ski Area is near Philipsburg on Highway 1, and is situated along the Pintler Scenic Route opposite of Georgetown Lake and is easily accessed from Butte, Missoula and Helena. Discovery's three faces offer different terrain for every skier. During the summer months enjoy Discovery Bike Park from June 18th through October. skidiscovery.com

Broadway Cafe Pizzeria

Gourmet Pizzas • Only the Freshest Ingredients
Salads • Espresso • Beer & Wine
Great Views & Great Service

"Best Pizza West of the Mississippi"
302 East Broadway • Butte • Call for reservations & take out
(406) 723-8711
Monday-Friday 11PM-9PM
Saturday 12PM-9PM • Sun. Closed

Hello.
It's deliciousness
you're looking for



Joe's Pasty Shop 1641 Grand • 723-9071
Mon.-Fri. 7am-7pm
Sat. 8am-3pm

WET Water & Environmental TECHNOLOGIES

Full-Service Environmental & Engineering Consulting

Site Investigation & Remediation • Civil Engineering
Construction Management • Ground Water Studies
Storage Tank Services • Land Development
Surveying/UAV • IT Services • GIS/GPS
Environmental Permitting • Air Quality Services
Expert Witness Services • And More!

100% Employee Owned

Butte/Bozeman/Anaconda/Great Falls/Kalispell • 406.782.5220
info@waterenvtech.com • waterenvtech.com



DREAM BIG MONTANA

FRIDAY-JUNE 28, 2019

SKILLS CAMP

JUNE 28TH
10 AM-12 PM

NARANCHE STADIUM

FAMILY FUN DAY(FREE)

JUNE 28TH
12 PM-3 PM

BUTTE CIVIC CENTER

LIVE MUSIC

JUNE 28TH
6 PM-11 PM

UPTOWN BUTTE



ADVENTURE IS WAITING IN OUR BACKYARD.

Nestled a mile high in the Rocky Mountains, surrounded by the natural wonders of the Continental Divide and Montana's headwater streams, Butte serves as your base camp to boundless opportunity. High quality adventures are just minutes from the city, whether you have a few hours or several days. Bring your favorite gear and head outdoors, and then relax amid Butte's unique and vibrant history.

Visit butteelevated.com or basecampbutte.com for more information on how to #PlayElevated!





FOR YOUTH DEVELOPMENT®
FOR HEALTHY LIVING
FOR SOCIAL RESPONSIBILITY

HEALTHY LIVING IS FOR EVERYONE

BUTTE FAMILY YMCA



Aquatics Center with 8-lane lap pool, zero-depth entry leisure pool, hot tub, water slides and other fixtures.

- Swim Lessons - Water Fitness - Lap Swim - Open Swim & Slide

Fitness Center with cardio equipment like treadmills, cross trainers, life cycles, circuit training, free weights, and much more. Personal Training and Medical Exercise.

Group Exercise with the best instructors in the area. 90+ hours per week in two large classrooms. To name a few classes...

- Easy Does It - Oula - Yoga - Group Spin - Pilates - Silver Sneakers - Insanity - Build & Burn
- Self Defense - Zumba Gold - RIPPED - TRX - Cardio Kickboxing - Senior Strength

Youth Development includes programs like After School, Summer Camp, Active 6 and Youth Water Safety.

Youth Sports where kids learn the fundamental, teamwork, sportsmanship, and character development.

- Basketball - Soccer - Flag Football - Volleyball - Floor Hockey - Water Polo - Swim Team

HOURS: M-F 5:00a to 9:00p, Sat. 8:00a to 6:00p, Sun. 12:00p to 6:00p

RATES: Contact Welcome Center for Membership, Programs, and Daily Fees

WHERE: 2975 Washoe Street, Butte MT 59701 or call 406.782.1266

111237 04/12

**Sometimes when you
listen really close,
you can actually hear
Molly chasing her dreams.**



**POWER
— TO THE —
PATIENT**

There's more to quality healthcare than achieving a good outcome. Our approach starts with understanding what matters to you, so we can deliver the most personalized care possible. It's in these moments of listening and connecting that we're able to develop the right plan to help you and your family obtain and maintain your best health possible. From our network of compassionate primary care providers and top ranked hospitals to tools like easy online scheduling, we're working hard to empower you in ways that can help you take charge of your health.



POWERTOthepatient.COM

HOLY ROSARY

ST. JAMES

ST. VINCENT

MEDICAL GROUP