

# Alabama

## Labor Market Information News

### Table of Contents

Economic Brief	1
LMI Definitions	2
Consumer Price Index	6
Current Employment Statistics	
Employment	3-5, 7-14
Hours and Earnings	6
Local Area Unemployment Statistics	15-19
Release Schedule	20
Technical Support	20

January 2026  
Publication



### Economic Brief

Alabama's seasonally adjusted labor force participation rate, at 57.7 percent in December, was higher than 57.6 percent reported in November 2025 and December 2024. The civilian labor force was 2,381,356 in December, compared to 2,377,878 in November 2025 and 2,359,865 a year ago.

	Not Seasonally Adjusted			Seasonally Adjusted		
	Dec p 2025	Nov r 2025	Dec r 2024	Dec p 2025	Nov r 2025	Dec r 2024
Civilian Labor Force <sup>1</sup>	2,382,044	2,389,181	2,362,075	2,381,356	2,377,878	2,359,865
Employment	2,327,458	2,324,358	2,286,637	2,317,206	2,312,614	2,281,387
Unemployment	54,586	64,823	75,438	64,150	65,264	78,478
AL Unemployment Rate	2.3	2.7	3.2	2.7	2.7	3.3
AL Labor Force Participation Rate	57.7	57.9	57.6	57.7	57.6	57.6
U.S. Unemployment Rate	4.1	4.3	3.8	4.4	4.5	4.1
U.S. Labor Force Participation Rate	62.1	62.4	62.2	62.4	62.5	62.5
Wage and Salary Employment <sup>2</sup>	2,221,300	2,222,000	2,212,200	2,211,200	2,208,800	2,200,300

<sup>1</sup> Place of residence basis. <sup>2</sup> Place of work basis. <sup>3</sup> Preliminary. <sup>4</sup> Revised.

Estimates prepared by the Alabama Department of Workforce in cooperation with the Bureau of Labor Statistics, based on a 2024 benchmark.

The similar national labor force participation rate for December, at 62.4 percent, was lower than the 62.5 percent reported the prior month and lower than 62.5 from a year ago.

The State's seasonally adjusted unemployment rate, at 2.7 percent in December, was unchanged compared to 2.7 percent from the prior month and lower than 3.3 percent reported a year ago. December's rate represented 64,150 unemployed persons, compared to 65,264 in November 2025 and 78,478 in December 2024.

The comparable national unemployment rate for December, at 4.4 percent, was lower than 4.5 percent from the prior month and higher compared to the year ago rate of 4.1 percent.

Alabama's not seasonally adjusted wage and salary employment, totaling 2,221,300 in December, decreased by 700 jobs over the month. Losses were in manufacturing (-1,500), leisure and hospitality (-1,300), private education and health services (-1,200), construction (-800), financial activities (-400), and other services (-200). Employment gains occurred in trade, transportation, and utilities (+3,900); government (+500); information (+200); and mining and logging (+100). The employment level was unchanged over the month in professional and business services.

Over the past twelve months, total nonagricultural wage and salary employment increased by 9,100 jobs. Annual gains were in leisure and hospitality (+6,700), private education and health services (+4,900), construction (+3,400), government (+1,200), manufacturing (+800), mining and logging (+200), and information (+100). Annual losses were in trade, transportation, and utilities (-3,500); financial activities (-2,300); professional and business services (-1,500); and other services (-900).



# LMI Definitions

American Community Survey (ACS): The ACS is an ongoing survey that provides data every year by giving communities the current information they need to plan investments and services. Information from the survey generates data that help determine how more than \$400 billion in federal and state funds are distributed each year.

Bureau of Labor Statistics (BLS): The Bureau is a division of the U.S. Department of Labor and functions as the principal data gathering agency of the federal government in the field of labor economics. The BLS collects, processes, analyzes and disseminates data relating to employment, unemployment, the labor force, productivity, prices, family expenditures, wages, industrial relations, and occupational safety and health.

Census Tract: A small relatively permanent statistical subdivision of a county delineated by local committees of census data users for the purpose of collecting and presenting census data. It is worth noting that census tract conform to county lines (that is they are always sub-sets of a county), but may not follow zip code lines.

Civilian Labor Force: The civilian labor force comprises the total of all civilians age 16 and older classified as employed or unemployed, or seeking employment. This gives employers a measure of the labor pool.

Consumer Price Index (CPI): A measure of the average change in prices over time for a set group of goods and services. The Bureau of Labor Statistics publishes CPIs for two population groups: (1) for all urban consumers (CPI-U) which covers approximately 80 percent of the total population and (2) for all urban wage earners and clerical workers (CPI-W) which covers 32 percent of the total population. Among the CPI components are the costs of housing, food, transportation, and energy. While the CPI is not technically a cost of living index, it is often used to indicate changes in the cost-of-living.

Current Employment Statistics (CES) Survey: A monthly survey of nonfarm business establishments used to collect nonfarm payroll employment, and worker hours and earnings by industry and area. Through the Federal/State cooperative effort, these data are used to compute current monthly employment, and hours and earnings estimates, by industry, for the nation, the 50 states and the District of Columbia, and over 250 Metropolitan Statistical Areas (MSA's).

Current Population Survey (CPS): A monthly household survey of the civilian non-institutional population of the United States. This BLS survey provides labor market statistics (e.g., employment, unemployment and wages) by industry, occupation, and demographic characteristics. The Bureau of the Census collects data for this survey in cooperation with BLS.

CES Employment: A count of all persons who worked full or part time or received pay from a nonagricultural employer for any part of the pay period that included the 12th day of the month. Because this count comes from a survey of employers, persons who work for two different companies could be counted twice. Therefore, non-farm payroll employment is really a count of the number of jobs rather than the number of persons employed. This count is also based on where the jobs are located, regardless of where the workers reside. Non-farm payroll employment data are collected and compiled by Current Employment Statistics (CES) Survey.

Labor Force Participation Rate: The labor force participation rate represents the number of people in the labor force as a percentage of the civilian noninstitutional population. In other words, the participation rate is the percentage of the population that is either working or actively looking for work. The labor force participation rate is calculated as:  $(\text{Labor Force} \div \text{Civilian Noninstitutional Population}) \times 100$ .

Labor Market Information (LMI): A body of knowledge that includes a variety of economic, social, and demographic information. This information describes current conditions and forecasts employment conditions at a future date. LMI is comprised of population data, labor force data, industry data, occupational data, general economic trends, and career data.

Local Area Unemployment Statistics (LAUS): A federal-state cooperative program, which produces monthly estimates of total employment and unemployment for approximately 7,500 areas.

Metropolitan Area (MA): A Core Based Statistical Area associated with at least one urbanized area that has a population of at least 50,000. The Metropolitan Statistical Area comprises the central county or counties containing the core, plus adjacent outlying counties having a high degree of social and economic integration with the central county as measured through commuting.

North American Industrial Classification System (NAICS): A system of identifying industry activity, NAICS is replacing the U.S. Standard Industrial Classification (SIC) system. NAICS will reshape the way we track our industries. NAICS was developed jointly by the U.S., Canada, and Mexico to provide new comparability in statistics about business activity across North America.

Occupational Employment Statistics (OES): A federal state cooperative program, which collects detailed occupational data by industry in a three-year cycle. The OES survey is an annual mail survey measuring occupational employment and occupational wage rates for wage and salary workers in nonfarm establishments, by industry. On a national level, the survey samples approximately 400,000 establishments per year, taking 3 years to fully collect the sample of 1.2 million establishments.

Seasonal Adjustment: A statistical technique that eliminates the influences of weather, holidays, the opening and closing of schools, and other recurring seasonal events from economic time series. This permits easier observation and analysis of cyclical, trend, and other nonseasonal movements in the data.

Standard Occupational Classification (SOC): This is an occupational coding system that was presented by the Bureau of Labor Statistics (BLS) to replace and consolidate several previous coding systems used to classify occupations. The consolidated coding systems include the Occupational Employment Statistics (OES), the Dictionary of Occupational Titles (DOT), and the grouping of occupational titles used by the Census based on survey responses.

Workforce Regions: State specific geographical area, designated by the governor, within which employment and training services are provided under the Workforce Innovation and Opportunity Act (WIOA) in Alabama.

## EMPLOYEES IN NONAGRICULTURAL INDUSTRIES IN ALABAMA 1/

(in thousands)

INDUSTRY				NET CHANGE FROM:		PERCENT CHANGE FROM:	
	Dec p 2025	Nov r 2025	Dec r 2024	Nov r 2025	Dec r 2024	Nov r 2025	Dec r 2024
<b>Total Nonfarm</b>	<b>2221.3</b>	<b>2222.0</b>	<b>2212.2</b>	<b>-0.7</b>	<b>9.1</b>	<b>-0.03</b>	<b>0.41</b>
<b>Total Private</b>	<b>1796.7</b>	<b>1797.9</b>	<b>1788.8</b>	<b>-1.2</b>	<b>7.9</b>	<b>-0.07</b>	<b>0.44</b>
<b>Goods Producing</b>	<b>409.5</b>	<b>411.7</b>	<b>405.1</b>	<b>-2.2</b>	<b>4.4</b>	<b>-0.53</b>	<b>1.09</b>
<b>Mining and Logging</b>	<b>9.4</b>	<b>9.3</b>	<b>9.2</b>	<b>0.1</b>	<b>0.2</b>	<b>1.08</b>	<b>2.17</b>
Mining (except Oil and Gas)	4.8	4.8	4.7	0.0	0.1	0.00	2.13
<b>Construction</b>	<b>112.9</b>	<b>113.7</b>	<b>109.5</b>	<b>-0.8</b>	<b>3.4</b>	<b>-0.70</b>	<b>3.11</b>
Construction of Buildings	27.0	27.5	24.8	-0.5	2.2	-1.82	8.87
Heavy and Civil Engineering Construction	19.5	19.5	18.7	0.0	0.8	0.00	4.28
Specialty Trade Contractors	66.4	66.7	66.0	-0.3	0.4	-0.45	0.61
<b>Manufacturing</b>	<b>287.2</b>	<b>288.7</b>	<b>286.4</b>	<b>-1.5</b>	<b>0.8</b>	<b>-0.52</b>	<b>0.28</b>
<b>Durable Goods Manufacturing</b>	<b>195.1</b>	<b>195.9</b>	<b>193.8</b>	<b>-0.8</b>	<b>1.3</b>	<b>-0.41</b>	<b>0.67</b>
Wood Product Manufacturing	18.7	18.8	18.5	-0.1	0.2	-0.53	1.08
Primary Metal Manufacturing	18.7	18.8	18.4	-0.1	0.3	-0.53	1.63
Fabricated Metal Product Manufacturing	27.9	28.0	27.4	-0.1	0.5	-0.36	1.82
Machinery Manufacturing	10.6	10.6	10.6	0.0	0.0	0.00	0.00
Computer and Electronic Product Manufacturing	7.3	7.3	7.2	0.0	0.1	0.00	1.39
Elect.Equipment, Appliance & Component Manfng	6.8	6.8	6.7	0.0	0.1	0.00	1.49
Transportation Equipment Manufacturing	79.2	79.6	79.7	-0.4	-0.5	-0.50	-0.63
Motor Vehicle Manufacturing	23.1	23.2	23.0	-0.1	0.1	-0.43	0.43
Motor Vehicle Parts Manufacturing	29.8	30.0	30.2	-0.2	-0.4	-0.67	-1.32
Aerospace Products & Parts Manufacturing	14.8	14.9	14.9	-0.1	-0.1	-0.67	-0.67
Furniture and Related Product Manufacturing	8.7	8.7	8.6	0.0	0.1	0.00	1.16
<b>Non-Durable Goods Manufacturing</b>	<b>92.1</b>	<b>92.8</b>	<b>92.6</b>	<b>-0.7</b>	<b>-0.5</b>	<b>-0.75</b>	<b>-0.54</b>
Food Manufacturing	34.2	34.6	34.5	-0.4	-0.3	-1.16	-0.87
Animal Slaughtering and Processing	25.6	25.9	25.8	-0.3	-0.2	-1.16	-0.78
Textile Mills	3.7	3.7	3.8	0.0	-0.1	0.00	-2.63
Fiber, Yarn, and Thread Mills	1.3	1.3	1.4	0.0	-0.1	0.00	-7.14
Textile Product Mills	2.3	2.3	2.4	0.0	-0.1	0.00	-4.17
Textile Furnishings Mills	1.0	1.0	1.1	0.0	-0.1	0.00	-9.09
Paper Manufacturing	11.3	11.3	11.4	0.0	-0.1	0.00	-0.88
Pulp, Paper, and Paperboard Mills	6.5	6.5	6.7	0.0	-0.2	0.00	-2.99
Plastics and Rubber Products Manufacturing	18.0	18.1	18.3	-0.1	-0.3	-0.55	-1.64
<b>Service Providing</b>	<b>1811.8</b>	<b>1810.3</b>	<b>1807.1</b>	<b>1.5</b>	<b>4.7</b>	<b>0.08</b>	<b>0.26</b>
<b>Private Service Providing</b>	<b>1387.2</b>	<b>1386.2</b>	<b>1383.7</b>	<b>1.0</b>	<b>3.5</b>	<b>0.07</b>	<b>0.25</b>
<b>Trade, Transportation, and Utilities</b>	<b>416.5</b>	<b>412.6</b>	<b>420.0</b>	<b>3.9</b>	<b>-3.5</b>	<b>0.95</b>	<b>-0.83</b>
<b>Wholesale Trade</b>	<b>79.3</b>	<b>79.5</b>	<b>80.0</b>	<b>-0.2</b>	<b>-0.7</b>	<b>-0.25</b>	<b>-0.88</b>
Merchant Wholesalers, Durable Goods	41.8	42.1	41.8	-0.3	0.0	-0.71	0.00
Merchant Wholesalers, Nondurable Goods	22.8	22.8	23.1	0.0	-0.3	0.00	-1.30
Wholesale Trade Agents and Brokers	14.7	14.6	15.1	0.1	-0.4	0.68	-2.65

p = Preliminary r = Revised

1/ Data include, on a place of work basis, all full and part-time nonagricultural wage and salary employees who worked during or received pay for, any part of the pay period which included the 12th of the month. Proprietors, self-employed persons, workers in private households and unpaid family workers are excluded. Estimates adjusted to a 2024 benchmark, based on the North American Industry Classification System (NAICS), 2022. Totals may not add due to rounding.

# EMPLOYEES IN NONAGRICULTURAL INDUSTRIES IN ALABAMA <sup>1/</sup>

(in thousands)

INDUSTRY				NET CHANGE FROM:		PERCENT CHANGE FROM:	
	Dec p 2025	Nov r 2025	Dec r 2024	Nov r 2025	Dec r 2024	Nov r 2025	Dec r 2024
<b>Retail Trade</b>	<b>247.5</b>	<b>244.8</b>	<b>245.4</b>	<b>2.7</b>	<b>2.1</b>	<b>1.10</b>	<b>0.86</b>
Motor Vehicle and Parts Dealers	34.4	34.0	33.6	0.4	0.8	1.18	2.38
Building Mat. & Garden Equip. and Supplies Dealers	23.1	22.8	23.6	0.3	-0.5	1.32	-2.12
Food and Beverage Retailers	37.9	37.9	37.7	0.0	0.2	0.00	0.53
General Merchandise Retailers	65.5	64.5	65.5	1.0	0.0	1.55	0.00
Department Stores	15.7	15.1	15.7	0.6	0.0	3.97	0.00
Warehouse Clubs, Supercenters, and Other General	49.8	49.4	49.8	0.4	0.0	0.81	0.00
Health and Personal Care Retailers	15.9	15.8	16.2	0.1	-0.3	0.63	-1.85
<b>Trans, Warehousing, and Utilities</b>	<b>89.7</b>	<b>88.3</b>	<b>94.6</b>	<b>1.4</b>	<b>-4.9</b>	<b>1.59</b>	<b>-5.18</b>
Utilities	12.6	12.5	12.9	0.1	-0.3	0.80	-2.33
Elect. Power Gen., Transmission & Distribution	10.5	10.4	10.7	0.1	-0.2	0.96	-1.87
Transportation and Warehousing	77.1	75.8	81.7	1.3	-4.6	1.72	-5.63
Truck Transportation	25.5	25.5	26.6	0.0	-1.1	0.00	-4.14
General Freight Trucking	16.3	16.3	16.9	0.0	-0.6	0.00	-3.55
<b>Information</b>	<b>23.1</b>	<b>22.9</b>	<b>23.0</b>	<b>0.2</b>	<b>0.1</b>	<b>0.87</b>	<b>0.43</b>
Telecommunications	7.0	6.9	7.1	0.1	-0.1	1.45	-1.41
<b>Financial Activities</b>	<b>100.8</b>	<b>101.2</b>	<b>103.1</b>	<b>-0.4</b>	<b>-2.3</b>	<b>-0.40</b>	<b>-2.23</b>
Finance and Insurance	73.0	73.3	74.9	-0.3	-1.9	-0.41	-2.54
Credit Intermediation and Related Activities	37.1	36.9	37.2	0.2	-0.1	0.54	-0.27
Depository Credit Intermediation	29.4	29.3	29.4	0.1	0.0	0.34	0.00
Insurance Carriers and Related Activities	29.8	30.2	32.2	-0.4	-2.4	-1.32	-7.45
Insurance Carriers	13.1	13.2	13.7	-0.1	-0.6	-0.76	-4.38
Real Estate and Rental and Leasing	27.8	27.9	28.2	-0.1	-0.4	-0.36	-1.42
<b>Professional and Business Services</b>	<b>261.1</b>	<b>261.1</b>	<b>262.6</b>	<b>0.0</b>	<b>-1.5</b>	<b>0.00</b>	<b>-0.57</b>
Professional, Scientific and Technical Services	133.4	132.3	127.4	1.1	6.0	0.83	4.71
Architectural, Engineering, and Related Services	35.6	35.6	33.8	0.0	1.8	0.00	5.33
Computer Systems Design and Related Services	29.0	29.0	26.9	0.0	2.1	0.00	7.81
Management of Companies and Enterprises	17.7	17.6	17.3	0.1	0.4	0.57	2.31
Admin, Support & Waste Mngmt & Remediation Svcs.	110.0	111.2	117.9	-1.2	-7.9	-1.08	-6.70
<b>Private Education and Health Services</b>	<b>274.0</b>	<b>275.2</b>	<b>269.1</b>	<b>-1.2</b>	<b>4.9</b>	<b>-0.44</b>	<b>1.82</b>
Private Educational Services	31.0	32.1	33.3	-1.1	-2.3	-3.43	-6.91
Health Care and Social Assistance	243.0	243.1	235.8	-0.1	7.2	-0.04	3.05
Ambulatory Health Care Services	112.1	112.1	111.2	0.0	0.9	0.00	0.81
Offices of Physicians	44.4	44.4	43.8	0.0	0.6	0.00	1.37
Hospitals	46.6	46.6	45.3	0.0	1.3	0.00	2.87
Nursing and Residential Care Facilities	46.0	45.9	44.7	0.1	1.3	0.22	2.91
Social Assistance	38.3	38.5	34.6	-0.2	3.7	-0.52	10.69
<b>Leisure and Hospitality</b>	<b>213.5</b>	<b>214.8</b>	<b>206.8</b>	<b>-1.3</b>	<b>6.7</b>	<b>-0.61</b>	<b>3.24</b>
Arts, Entertainment, and Recreation	22.7	22.7	21.7	0.0	1.0	0.00	4.61
Amusements, Gambling, and Recreation	18.9	19.0	17.8	-0.1	1.1	-0.53	6.18
Accommodation and Food Services	190.8	192.1	185.1	-1.3	5.7	-0.68	3.08
Food Services and Drinking Places	175.5	177.0	168.4	-1.5	7.1	-0.85	4.22
Restaurants and Other Eating Places	163.7	164.8	156.9	-1.1	6.8	-0.67	4.33
Full-Service Restaurants	68.6	68.6	64.7	0.0	3.9	0.00	6.03
Limited-Services Eating Places	95.1	96.2	92.2	-1.1	2.9	-1.14	3.15
<b>Other Services</b>	<b>98.2</b>	<b>98.4</b>	<b>99.1</b>	<b>-0.2</b>	<b>-0.9</b>	<b>-0.20</b>	<b>-0.91</b>
<b>Government</b>	<b>424.6</b>	<b>424.1</b>	<b>423.4</b>	<b>0.5</b>	<b>1.2</b>	<b>0.12</b>	<b>0.28</b>
Federal Government	54.2	54.0	59.3	0.2	-5.1	0.37	-8.60
State Government	137.2	137.1	134.3	0.1	2.9	0.07	2.16
State Government Educational Services	78.8	78.8	77.2	0.0	1.6	0.00	2.07
State Government Excluding Educational Services	58.4	58.3	57.1	0.1	1.3	0.17	2.28
Local Government	233.2	233.0	229.8	0.2	3.4	0.09	1.48
Local Government Educational Services	104.9	105.2	104.0	-0.3	0.9	-0.29	0.87
Local Government Excluding Educational Services	128.3	127.8	125.8	0.5	2.5	0.39	1.99

p = Preliminary r = Revised

1/ Data include, on a place of work basis, all full and part-time nonagricultural wage and salary employees who worked during or received pay for, any part of the pay period which included the 12th of the month. Proprietors, self-employed persons, workers in private households and unpaid family workers are excluded. Estimates adjusted to a 2024 benchmark, based on the North American Industry Classification System (NAICS), 2022. Totals may not add due to rounding.

# NONAGRICULTURAL WAGE AND SALARY EMPLOYMENT IN ALABAMA 1/ (in thousands)

INDUSTRY	Not Seasonally Adjusted			Seasonally Adjusted <sup>3/</sup>		
	Dec p 2025	Nov r 2025	Dec r 2024	Dec p 2025	Nov r 2025	Dec r 2024
<b>Total Nonfarm<sup>2/</sup></b>	<b>2221.3</b>	<b>2222.0</b>	<b>2212.2</b>	<b>2211.2</b>	<b>2208.8</b>	<b>2200.3</b>
<b>Total Private</b>	<b>1796.7</b>	<b>1797.9</b>	<b>1788.8</b>	<b>1790.2</b>	<b>1788.1</b>	<b>1780.1</b>
<b>Goods Producing</b>	<b>409.5</b>	<b>411.7</b>	<b>405.1</b>	<b>408.6</b>	<b>409.8</b>	<b>403.7</b>
Mining and Logging	9.4	9.3	9.2	9.4	9.2	9.2
Construction	112.9	113.7	109.5	112.1	112.4	108.7
Manufacturing	287.2	288.7	286.4	287.1	288.2	285.8
<b>Service Providing</b>	<b>1811.8</b>	<b>1810.3</b>	<b>1807.1</b>	<b>1802.6</b>	<b>1799.0</b>	<b>1796.6</b>
<b>Private Service Providing</b>	<b>1387.2</b>	<b>1386.2</b>	<b>1383.7</b>	<b>1381.6</b>	<b>1378.3</b>	<b>1376.4</b>
Trade, Transportation, and Utilities	416.5	412.6	420.0	407.9	407.7	410.4
Wholesale Trade	79.3	79.5	80.0	79.2	79.2	80.0
Retail Trade	247.5	244.8	245.4	242.3	242.5	239.7
Transportation, Warehousing, and Utilities	89.7	88.3	94.6	86.4	86.0	90.7
Information	23.1	22.9	23.0	23.0	22.8	22.9
Financial Activities	100.8	101.2	103.1	101.0	100.6	103.3
Finance and Insurance	73.0	73.3	74.9	73.3	73.0	75.2
Real Estate and Rental and Leasing	27.8	27.9	28.2	27.7	27.6	28.1
<b>Professional and Business Services</b>	<b>261.1</b>	<b>261.1</b>	<b>262.6</b>	<b>260.7</b>	<b>258.6</b>	<b>262.3</b>
Professional, Scientific, and Tech Services	133.4	132.3	127.4	133.1	132.4	127.1
Management of Companies and Enterprises	17.7	17.6	17.3	17.7	17.8	17.3
Admin, Supp & Waste Manage & Remed Services	110.0	111.2	117.9	109.9	108.4	117.9
<b>Private Education and Health Services</b>	<b>274.0</b>	<b>275.2</b>	<b>269.1</b>	<b>273.1</b>	<b>273.5</b>	<b>267.5</b>
Private Educational Services	31.0	32.1	33.3	30.5	31.0	32.5
Health Care and Social Assistance	243.0	243.1	235.8	242.6	242.5	235.0
<b>Leisure and Hospitality</b>	<b>213.5</b>	<b>214.8</b>	<b>206.8</b>	<b>217.3</b>	<b>216.6</b>	<b>210.7</b>
Arts, Entertainment, and Recreation	22.7	22.7	21.7	23.6	23.3	22.5
Accommodation and Food Services	190.8	192.1	185.1	193.7	193.3	188.2
<b>Other Services</b>	<b>98.2</b>	<b>98.4</b>	<b>99.1</b>	<b>98.6</b>	<b>98.5</b>	<b>99.3</b>
<b>Government</b>	<b>424.6</b>	<b>424.1</b>	<b>423.4</b>	<b>421.0</b>	<b>420.7</b>	<b>420.2</b>
Federal Government	54.2	54.0	59.3	53.6	53.8	58.7
State Government	137.2	137.1	134.3	135.6	135.2	132.9
Local Government	233.2	233.0	229.8	231.8	231.7	228.6

METROPOLITAN STATISTICAL AREAS Total Nonfarm Employment	Not Seasonally Adjusted			Seasonally Adjusted		
	Dec p 2025	Nov r 2025	Dec r 2024	Dec p 2025	Nov r 2025	Dec r 2024
<b>Anniston-Oxford</b>	<b>47.8</b>	<b>47.8</b>	<b>47.7</b>	<b>47.5</b>	<b>47.6</b>	<b>47.4</b>
<b>Auburn-Opelika</b>	<b>81.2</b>	<b>81.5</b>	<b>80.6</b>	<b>80.9</b>	<b>80.8</b>	<b>80.3</b>
<b>Birmingham</b>	<b>576.3</b>	<b>575.3</b>	<b>572.8</b>	<b>572.3</b>	<b>571.1</b>	<b>568.9</b>
<b>Daphne-Fairhope-Foley</b>	<b>90.6</b>	<b>90.7</b>	<b>90.7</b>	<b>90.9</b>	<b>91.1</b>	<b>91.2</b>
<b>Decatur</b>	<b>63.4</b>	<b>63.3</b>	<b>62.9</b>	<b>63.1</b>	<b>63.1</b>	<b>62.5</b>
<b>Dothan</b>	<b>63.2</b>	<b>63.4</b>	<b>63.2</b>	<b>62.9</b>	<b>63.2</b>	<b>62.8</b>
<b>Florence-Muscle Shoals</b>	<b>60.9</b>	<b>60.8</b>	<b>60.7</b>	<b>60.5</b>	<b>60.3</b>	<b>60.3</b>
<b>Gadsden</b>	<b>35.5</b>	<b>35.8</b>	<b>35.3</b>	<b>35.3</b>	<b>35.5</b>	<b>35.0</b>
<b>Huntsville</b>	<b>292.8</b>	<b>293.6</b>	<b>290.8</b>	<b>291.7</b>	<b>292.0</b>	<b>289.4</b>
<b>Mobile</b>	<b>192.6</b>	<b>193.1</b>	<b>194.1</b>	<b>191.0</b>	<b>191.3</b>	<b>192.3</b>
<b>Montgomery</b>	<b>187.6</b>	<b>188.3</b>	<b>188.2</b>	<b>186.7</b>	<b>187.1</b>	<b>187.1</b>
<b>Tuscaloosa</b>	<b>119.3</b>	<b>119.6</b>	<b>118.8</b>	<b>118.6</b>	<b>118.5</b>	<b>118.0</b>

p= Preliminary      r= Revised

1/ Nonagricultural wage and salary employment estimates prepared by the United States Department of Labor. Data estimated on place of work basis and seasonally adjusted by use of the Bureau of Labor Statistics X-12 Seasonal Adjustment method.

2/ Total Nonfarm employment may not equal sum of data in seasonally adjusted columns due to some series not being seasonally adjusted.

3/ A 3-month average of seasonally adjusted over-the-month change is available at [www.bls.gov/sae/tables/state-news-](http://www.bls.gov/sae/tables/state-news-)



### HOURS AND EARNINGS DATA FOR SELECTED NONAGRICULTURAL INDUSTRIES IN ALABAMA<sup>1/</sup>

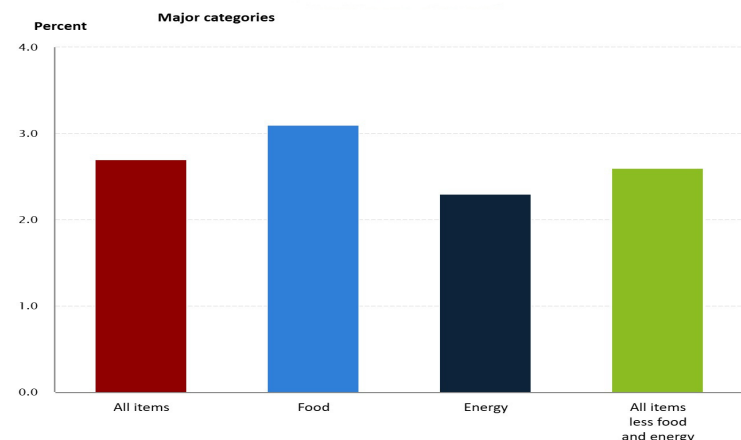
STATEWIDE INDUSTRY	All Employees (in thousands)			Average Weekly Earnings			Average Weekly Hours			Average Hourly Earnings		
	Dec p 2025	Nov r 2025	Dec r 2024	Dec p 2025	Nov r 2025	Dec r 2024	Dec p 2025	Nov r 2025	Dec r 2024	Dec p 2025	Nov r 2025	Dec r 2024
<b>Total Private</b>	<b>1,796.7</b>	<b>1,797.9</b>	<b>1,788.8</b>	<b>\$1,137.78</b>	<b>\$1,152.36</b>	<b>\$1,096.48</b>	<b>35.6</b>	<b>36.0</b>	<b>35.6</b>	<b>\$31.96</b>	<b>\$32.01</b>	<b>\$30.80</b>
<b>Goods Producing</b>	<b>409.5</b>	<b>411.7</b>	<b>405.1</b>	<b>\$1,393.45</b>	<b>\$1,389.53</b>	<b>\$1,315.66</b>	<b>42.6</b>	<b>42.9</b>	<b>41.9</b>	<b>\$32.71</b>	<b>\$32.39</b>	<b>\$31.40</b>
Construction	112.9	113.7	109.5	\$1,421.56	\$1,407.46	\$1,413.25	42.6	43.2	43.1	\$33.37	\$32.58	\$32.79
Manufacturing	287.2	288.7	286.4	\$1,358.15	\$1,368.25	\$1,303.69	42.1	42.4	41.4	\$32.26	\$32.27	\$31.49
<b>Private Service Providing</b>	<b>1,387.2</b>	<b>1,386.2</b>	<b>1,383.7</b>	<b>\$1,061.28</b>	<b>\$1,080.39</b>	<b>\$1,030.55</b>	<b>33.5</b>	<b>33.9</b>	<b>33.7</b>	<b>\$31.68</b>	<b>\$31.87</b>	<b>\$30.58</b>
Trade, Transportation, and Utilities	416.5	412.6	420.0	\$961.27	\$964.24	\$901.89	33.8	34.0	33.0	\$28.44	\$28.36	\$27.33
Financial Activities	100.8	101.2	103.1	\$1,339.92	\$1,335.70	\$1,310.64	36.5	37.0	38.1	\$36.71	\$36.10	\$34.40
Professional and Business Services	261.1	261.1	262.6	\$1,403.41	\$1,414.75	\$1,399.88	36.7	36.9	37.4	\$38.24	\$38.34	\$37.43
Private Education and Health Services	274.0	275.2	269.1	\$1,045.20	\$1,064.46	\$1,019.66	33.5	33.9	34.0	\$31.20	\$31.40	\$29.99
Leisure and Hospitality	213.5	214.8	206.8	\$438.99	\$449.05	\$419.66	24.2	24.7	24.3	\$18.14	\$18.18	\$17.27
Other Services	98.2	98.4	99.1	\$939.89	\$909.27	\$922.79	32.1	31.3	32.7	\$29.28	\$29.05	\$28.22
<b>MANUFACTURING: PRODUCTION WORKERS</b>	<b>Dec p 2025</b>	<b>Nov r 2025</b>	<b>Dec r 2024</b>	<b>Dec p 2025</b>	<b>Nov r 2025</b>	<b>Dec r 2024</b>	<b>Dec p 2025</b>	<b>Nov r 2025</b>	<b>Dec r 2024</b>	<b>Dec p 2025</b>	<b>Nov r 2025</b>	<b>Dec r 2024</b>
Manufacturing	212.1	212.1	201.1	\$1,153.25	\$1,160.17	\$1,071.27	43.9	44.4	41.7	\$26.27	\$26.13	\$25.69
Durable Goods	135.8	136.4	132.6	\$1,185.47	\$1,170.62	\$1,074.78	44.6	44.8	42.0	\$26.58	\$26.13	\$25.59
Non-Durable Goods	76.3	75.7	68.5	\$1,094.39	\$1,139.27	\$1,061.90	42.6	43.6	41.0	\$25.69	\$26.13	\$25.90
<b>METROPOLITAN STATISTICAL AREAS</b>	<b>Dec p 2025</b>	<b>Nov r 2025</b>	<b>Dec r 2024</b>	<b>Dec p 2025</b>	<b>Nov r 2025</b>	<b>Dec r 2024</b>	<b>Dec p 2025</b>	<b>Nov r 2025</b>	<b>Dec r 2024</b>	<b>Dec p 2025</b>	<b>Nov r 2025</b>	<b>Dec r 2024</b>
Anniston-Oxford	47.8	47.8	47.7	\$773.77	\$795.40	\$723.60	32.2	32.8	33.5	\$24.03	\$24.25	\$21.60
Auburn-Opelika	81.2	81.5	80.6	\$841.10	\$825.83	\$726.31	32.5	32.5	30.2	\$25.88	\$25.41	\$24.05
Birmingham	576.3	575.3	572.8	\$1,170.08	\$1,191.74	\$1,155.00	35.5	36.4	35.0	\$32.96	\$32.74	\$33.00
Daphne-Fairhope-Foley	90.6	90.7	90.7	\$926.28	\$942.52	\$849.55	33.5	34.1	32.5	\$27.65	\$27.64	\$26.14
Decatur	63.4	63.3	62.9	\$1,157.77	\$1,197.26	\$1,143.80	37.7	38.3	38.0	\$30.71	\$31.26	\$30.10
Dothan	63.2	63.4	63.2	\$818.30	\$841.46	\$778.81	33.8	34.5	33.7	\$24.21	\$24.39	\$23.11
Florence-Muscle Shoals	60.9	60.8	60.7	\$945.38	\$928.80	\$832.66	36.6	36.0	33.2	\$25.83	\$25.80	\$25.08
Gadsden	35.5	35.8	35.3	\$843.20	\$884.62	\$796.95	34.8	35.3	33.0	\$24.23	\$25.06	\$24.15
Huntsville	292.8	293.6	290.8	\$1,391.46	\$1,386.23	\$1,376.65	35.2	35.3	35.6	\$39.53	\$39.27	\$38.67
Mobile	192.6	193.1	194.1	\$1,129.13	\$1,152.00	\$1,093.72	35.8	36.0	36.3	\$31.54	\$32.00	\$30.13
Montgomery	187.6	188.3	188.2	\$1,152.36	\$1,131.39	\$1,053.72	36.0	35.5	36.0	\$32.01	\$31.87	\$29.27
Tuscaloosa	119.3	119.6	118.8	\$925.28	\$939.22	\$954.51	33.2	33.7	33.8	\$27.87	\$27.87	\$28.24

p = Preliminary r = Revised

<sup>1/</sup> Estimates, computed on a gross basis, do not represent straight time earnings or standard workweek.

## Consumer Price Index

12-month percentage change, Consumer Price Index, selected categories, December 2025, not seasonally adjusted

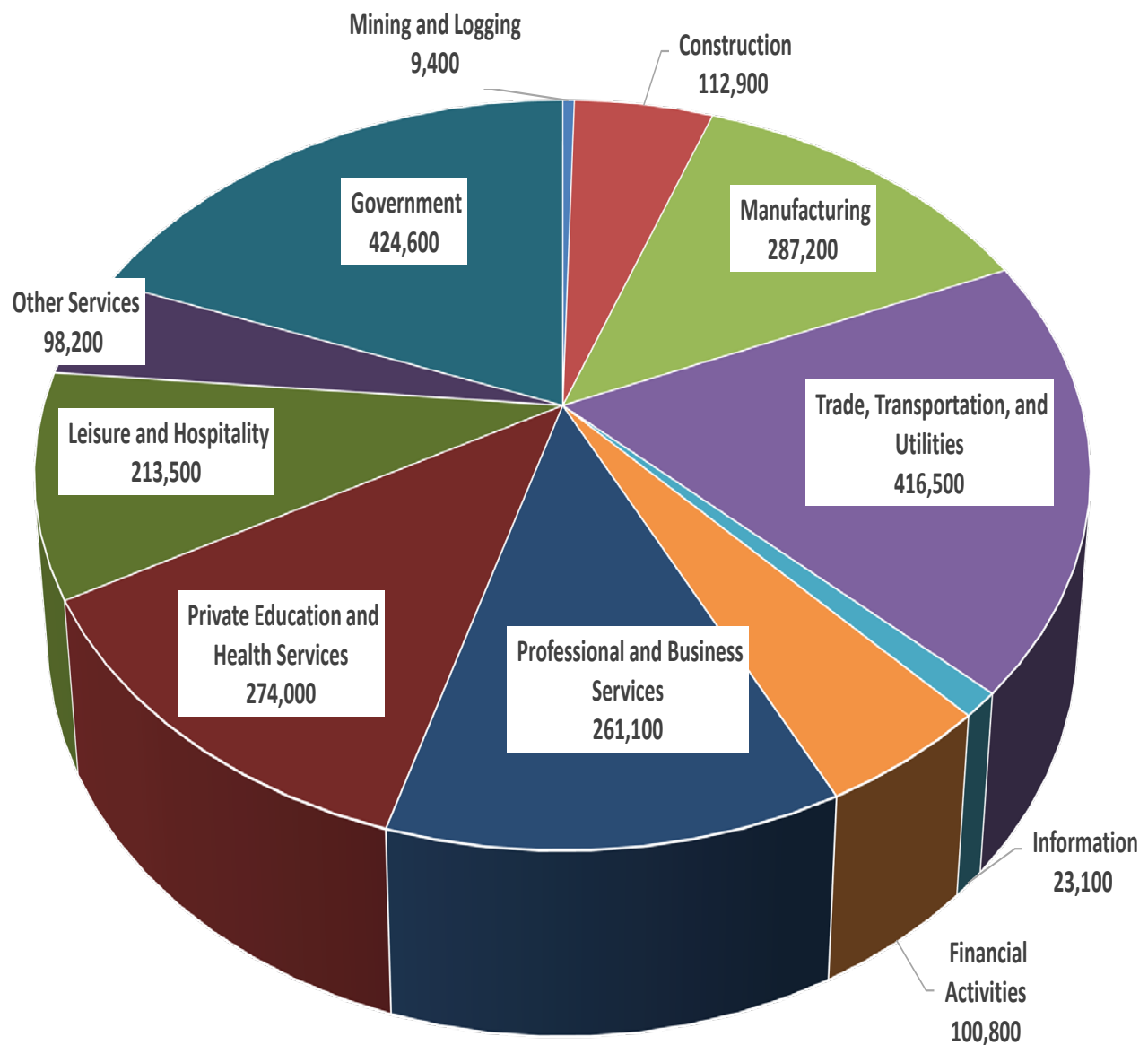


The Consumer Price Index for All Urban Consumers (CPI-U) increased 2.7 percent over the last 12 months to an index level of 324.054 (1982-84=100). For December, the index was unchanged prior to seasonal adjustment.

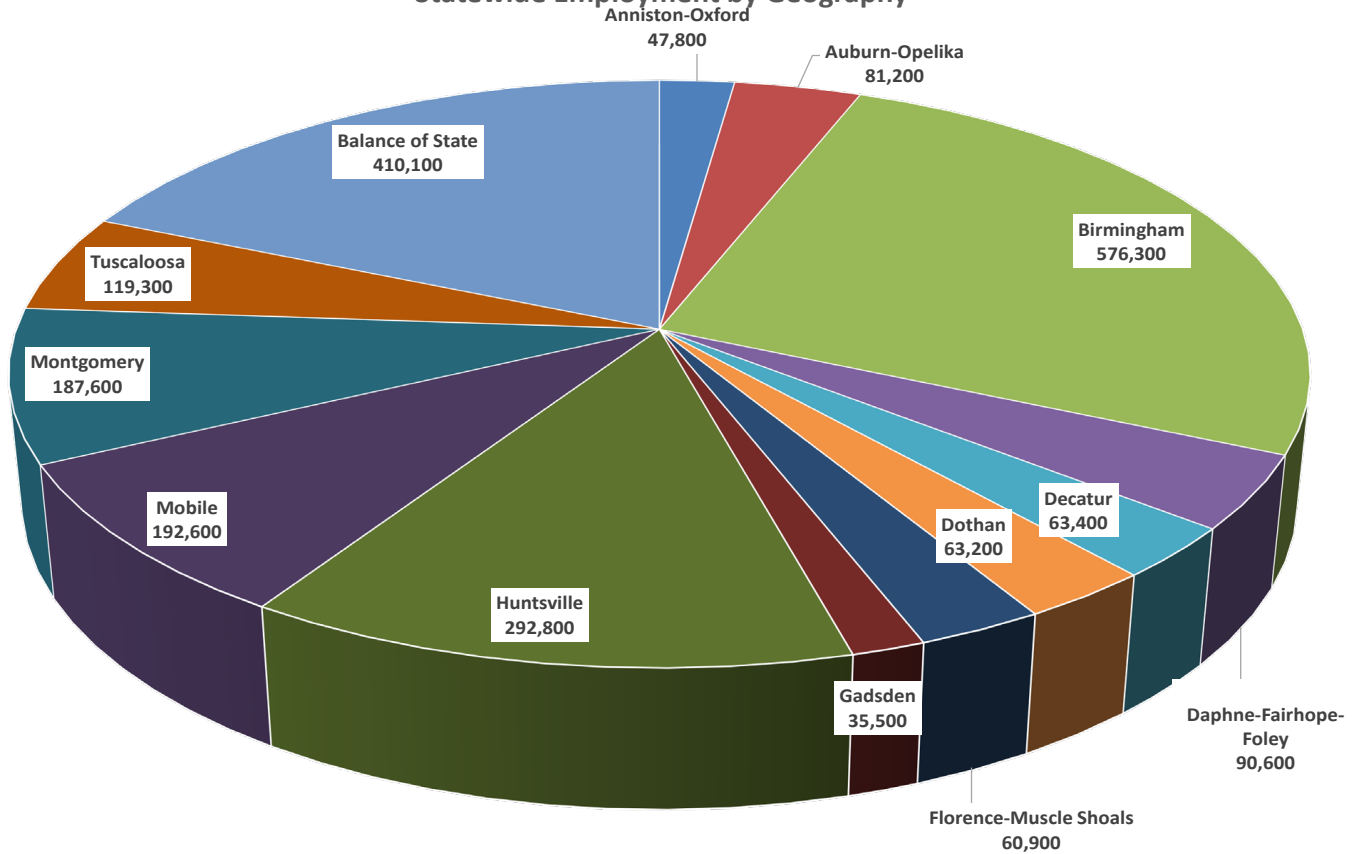
The Consumer Price Index for Urban Wage Earners and Clerical Workers (CPI-W) increased 2.6 percent over the last 12 months to an index level of 317.014 (1982-84=100). For December, the index decreased 0.1 percent prior to seasonal adjustment.

For further details visit the CPI homepage online at <http://www.bls.gov/cpi/> or contact the CPI Information Office at (202) 691-7000.

Alabama December 2025 Preliminary  
Current Employment Statistics  
Statewide Employment by Industry Sector



Alabama December 2025 Preliminary  
Current Employment Statistics  
Statewide Employment by Geography



Estimates prepared by the U.S. Department of Labor, Bureau of Labor Statistics and adjusted to a 2024 benchmark, based on the North American Industry Classification System (NAICS), 2022.



**NONAGRICULTURAL WAGE AND SALARY EMPLOYMENT  
FOR ALABAMA METROPOLITAN STATISTICAL AREAS (MSA'S)<sup>1/</sup>**

<b><u>ANNISTON-OXFORD MSA</u></b>	<b>Dec p 2025</b>	<b>Nov r 2025</b>	<b>Dec r 2024</b>	<b>Net Change From :</b>	
				<b>Nov r 2025</b>	<b>Dec r 2024</b>
<b>TOTAL NONAGRICULTURAL EMPLOYMENT</b>	<b>47,800</b>	<b>47,800</b>	<b>47,700</b>	<b>0</b>	<b>100</b>
<b>GOODS PRODUCING</b>	<b>8,300</b>	<b>8,300</b>	<b>8,200</b>	<b>0</b>	<b>100</b>
Mining, Logging, and Construction	1,400	1,500	1,400	-100	0
Manufacturing	6,900	6,800	6,800	100	100
<b>SERVICE PROVIDING</b>	<b>39,500</b>	<b>39,500</b>	<b>39,500</b>	<b>0</b>	<b>0</b>
Trade, Transportation, and Utilities	9,300	9,300	9,500	0	-200
Wholesale Trade	1,800	1,800	1,900	0	-100
Retail Trade	6,200	6,200	6,100	0	100
Transportation, Warehousing and Utilities	1,300	1,300	1,500	0	-200
Information	300	300	300	0	0
Financial Activities	1,400	1,400	1,400	0	0
Professional and Business Services	3,800	3,800	3,900	0	-100
Private Education and Health Services	4,700	4,700	4,600	0	100
Leisure and Hospitality	5,300	5,300	5,200	0	100
Other Services	1,800	1,800	1,800	0	0
Government	12,900	12,900	12,800	0	100
Federal	3,500	3,400	3,600	100	-100
State and Local	9,400	9,500	9,200	-100	200

<sup>1</sup> Place of work basis. p Preliminary. r Revised.

NOTE: Estimates prepared by the U.S. Department of Labor, Bureau of Labor Statistics.

Estimates adjusted to a 2024 benchmark. Based on the North American Industry Classification System (NAICS), 2022.

<b><u>AUBURN-OPELIKA MSA</u></b>	<b>Dec p 2025</b>	<b>Nov r 2025</b>	<b>Dec r 2024</b>	<b>Net Change From :</b>	
				<b>Nov r 2025</b>	<b>Dec r 2024</b>
<b>TOTAL NONAGRICULTURAL EMPLOYMENT</b>	<b>81,200</b>	<b>81,500</b>	<b>80,600</b>	<b>-300</b>	<b>600</b>
<b>GOODS PRODUCING</b>	<b>11,500</b>	<b>11,500</b>	<b>11,400</b>	<b>0</b>	<b>100</b>
Mining, Logging, and Construction	3,700	3,700	3,700	0	0
Manufacturing	7,800	7,800	7,700	0	100
<b>SERVICE PROVIDING</b>	<b>69,700</b>	<b>70,000</b>	<b>69,200</b>	<b>-300</b>	<b>500</b>
Trade, Transportation, and Utilities	13,300	13,200	13,800	100	-500
Wholesale Trade	1,500	1,500	1,500	0	0
Retail Trade	8,700	8,600	8,700	100	0
Transportation, Warehousing and Utilities	3,100	3,100	3,600	0	-500
Information	900	900	900	0	0
Financial Activities	2,600	2,600	2,600	0	0
Professional and Business Services	8,800	8,900	8,900	-100	-100
Private Education and Health Services	6,500	6,500	6,300	0	200
Leisure and Hospitality	10,500	10,800	10,300	-300	200
Other Services	2,700	2,700	2,700	0	0
Government	24,400	24,400	23,700	0	700
Federal	1,300	1,300	1,300	0	0
State and Local	23,100	23,100	22,400	0	700

<sup>1</sup> Place of work basis. p Preliminary. r Revised.

NOTE: Estimates prepared by the U.S. Department of Labor, Bureau of Labor Statistics.

Estimates adjusted to a 2024 benchmark. Based on the North American Industry Classification System (NAICS), 2022.

**NONAGRICULTURAL WAGE AND SALARY EMPLOYMENT  
FOR ALABAMA METROPOLITAN STATISTICAL AREAS (MSA'S)<sup>1/</sup>**

<b><u>BIRMINGHAM MSA</u></b>	<b>Dec p 2025</b>	<b>Nov r 2025</b>	<b>Dec r 2024</b>	<b>Net Change From :</b>	
				<b>Nov r 2025</b>	<b>Dec r 2024</b>
<b>TOTAL NONAGRICULTURAL EMPLOYMENT</b>	<b>576,300</b>	<b>575,300</b>	<b>572,800</b>	<b>1,000</b>	<b>3,500</b>
<b>GOODS PRODUCING</b>	<b>75,500</b>	<b>75,900</b>	<b>74,800</b>	<b>-400</b>	<b>700</b>
Mining and Logging	2,500	2,500	2,500	0	0
Construction	32,400	32,700	31,600	-300	800
Specialty Trade Contractors	18,800	19,000	18,400	-200	400
Manufacturing	40,600	40,700	40,700	-100	-100
Durable Goods	28,800	28,800	28,600	0	200
Primary Metal Manufacturing	5,300	5,200	5,200	100	100
Nondurable Goods	11,800	11,900	12,100	-100	-300
Food Manufacturing	4,000	4,100	4,200	-100	-200
<b>SERVICE PROVIDING</b>	<b>500,800</b>	<b>499,400</b>	<b>498,000</b>	<b>1,400</b>	<b>2,800</b>
Trade, Transportation, and Utilities	116,600	115,100	118,000	1,500	-1,400
Wholesale Trade	28,400	28,300	28,800	100	-400
Merchant Wholesalers	14,700	14,700	14,700	0	0
Retail Trade	60,500	59,500	59,800	1,000	700
General Merchandise Retailers	15,300	14,900	15,000	400	300
Transportation, Warehousing and Utilities	27,700	27,300	29,400	400	-1,700
Utilities	5,900	5,900	6,300	0	-400
Transportation and Warehousing	21,800	21,400	23,100	400	-1,300
Information	9,400	9,300	9,300	100	100
Telecommunication	2,900	2,800	2,900	100	0
Financial Activities	43,000	43,200	43,800	-200	-800
Finance and Insurance	34,900	35,000	35,500	-100	-600
Credit Intermediation and Related	14,200	14,200	14,300	0	-100
Insurance Carriers and Related	18,200	18,300	18,700	-100	-500
Professional and Business Services	74,300	73,700	74,200	600	100
Professional, Scientific and Technical Services	33,400	32,000	32,400	1,400	1,000
Management of Companies and Enterprises	9,300	9,300	9,200	0	100
Admin., Support and Waste Management	31,600	32,400	32,600	-800	-1,000
Private Education and Health Services	81,500	82,100	80,700	-600	800
Health Care and Social Assistance	73,900	74,500	72,200	-600	1,700
Ambulatory Healthcare	35,900	36,000	35,300	-100	600
Hospitals	17,700	17,700	17,100	0	600
Leisure and Hospitality	53,700	53,600	49,800	100	3,900
Food Service and Drinking Places	43,500	43,500	40,100	0	3,400
Other Services	30,700	30,800	30,900	-100	-200
Government	91,600	91,600	91,300	0	300
Federal	9,200	9,200	10,000	0	-800
State	36,300	36,400	35,700	-100	600
Local	46,100	46,000	45,600	100	500

<sup>1</sup> Place of work basis. p Preliminary. r Revised.

NOTE: Estimates prepared by the U.S. Department of Labor, Bureau of Labor Statistics.

Estimates adjusted to a 2024 benchmark. Based on the North American Industry Classification System (NAICS), 2022.

<b><u>DAPHNE-FAIRHOPE-FOLEY MSA</u></b>	<b>Dec p 2025</b>	<b>Nov r 2025</b>	<b>Dec r 2024</b>	<b>Net Change From :</b>	
				<b>Nov r 2025</b>	<b>Dec r 2024</b>
<b>TOTAL NONAGRICULTURAL EMPLOYMENT</b>	<b>90,600</b>	<b>90,700</b>	<b>90,700</b>	<b>-100</b>	<b>-100</b>
<b>GOODS PRODUCING</b>	<b>9,900</b>	<b>10,000</b>	<b>10,000</b>	<b>-100</b>	<b>-100</b>
<b>SERVICE PROVIDING</b>	<b>80,700</b>	<b>80,700</b>	<b>80,700</b>	<b>0</b>	<b>0</b>
Government	11,900	12,000	11,900	-100	0

<sup>1</sup> Place of work basis. p Preliminary. r Revised.

NOTE: Estimates prepared by the U.S. Department of Labor, Bureau of Labor Statistics.

Estimates adjusted to a 2024 benchmark. Based on the North American Industry Classification System (NAICS), 2022.

**NONAGRICULTURAL WAGE AND SALARY EMPLOYMENT  
FOR ALABAMA METROPOLITAN STATISTICAL AREAS (MSA'S)<sup>1/</sup>**

<b><u>DECATUR MSA</u></b>	<b>Dec p</b> <b>2025</b>	<b>Nov r</b> <b>2025</b>	<b>Dec r</b> <b>2024</b>	<b>Net Change From :</b>	
				<b>Nov r</b> <b>2025</b>	<b>Dec r</b> <b>2024</b>
<b>TOTAL NONAGRICULTURAL EMPLOYMENT</b>	<b>63,400</b>	<b>63,300</b>	<b>62,900</b>	<b>100</b>	<b>500</b>
<b>GOODS PRODUCING</b>	<b>19,600</b>	<b>19,600</b>	<b>19,700</b>	<b>0</b>	<b>-100</b>
Mining, Logging, and Construction	4,900	4,900	4,900	0	0
Manufacturing	14,700	14,700	14,800	0	-100
Durable Goods	8,500	8,500	8,400	0	100
Nondurable Goods	6,200	6,200	6,400	0	-200
<b>SERVICE PROVIDING</b>	<b>43,800</b>	<b>43,700</b>	<b>43,200</b>	<b>100</b>	<b>600</b>
Trade, Transportation, and Utilities	11,300	11,200	11,400	100	-100
Wholesale Trade	2,500	2,500	2,600	0	-100
Retail Trade	6,900	6,800	6,700	100	200
Transportation, Warehousing and Utilities	1,900	1,900	2,100	0	-200
Information	400	400	400	0	0
Financial Activities	2,300	2,300	2,300	0	0
Professional and Business Services	6,900	6,900	6,800	0	100
Private Education and Health Services	5,400	5,400	5,300	0	100
Leisure and Hospitality	5,300	5,300	5,200	0	100
Other Services	2,500	2,500	2,500	0	0
Government	9,700	9,700	9,300	0	400
Federal	400	400	400	0	0
State and Local	9,300	9,300	8,900	0	400

1 Place of work basis. p Preliminary. r Revised.

NOTE: Estimates prepared by the U.S. Department of Labor, Bureau of Labor Statistics.

Estimates adjusted to a 2024 benchmark. Based on the North American Industry Classification System (NAICS), 2022.

<b><u>DOTHAN MSA</u></b>	<b>Dec p</b> <b>2025</b>	<b>Nov r</b> <b>2025</b>	<b>Dec r</b> <b>2024</b>	<b>Net Change From :</b>	
				<b>Nov r</b> <b>2025</b>	<b>Dec r</b> <b>2024</b>
<b>TOTAL NONAGRICULTURAL EMPLOYMENT</b>	<b>63,200</b>	<b>63,400</b>	<b>63,200</b>	<b>-200</b>	<b>0</b>
<b>GOODS PRODUCING</b>	<b>8,700</b>	<b>8,800</b>	<b>8,700</b>	<b>-100</b>	<b>0</b>
Mining, Logging, and Construction	2,900	2,900	2,900	0	0
Manufacturing	5,800	5,900	5,800	-100	0
<b>SERVICE PROVIDING</b>	<b>54,500</b>	<b>54,600</b>	<b>54,500</b>	<b>-100</b>	<b>0</b>
Trade, Transportation, and Utilities	15,800	15,800	16,500	0	-700
Wholesale Trade	3,300	3,300	3,300	0	0
Retail Trade	9,300	9,300	9,600	0	-300
Transportation, Warehousing and Utilities	3,200	3,200	3,600	0	-400
Information	400	400	400	0	0
Financial Activities	2,100	2,100	2,100	0	0
Professional and Business Services	5,700	5,700	5,800	0	-100
Private Education and Health Services	9,900	10,000	9,600	-100	300
Leisure and Hospitality	6,600	6,600	6,400	0	200
Other Services	2,600	2,600	2,600	0	0
Government	11,400	11,400	11,100	0	300
Federal	400	400	400	0	0
State and Local	11,000	11,000	10,700	0	300

1 Place of work basis. p Preliminary. r Revised.

NOTE: Estimates prepared by the U.S. Department of Labor, Bureau of Labor Statistics.

Estimates adjusted to a 2024 benchmark. Based on the North American Industry Classification System (NAICS), 2022.

**NONAGRICULTURAL WAGE AND SALARY EMPLOYMENT  
FOR ALABAMA METROPOLITAN STATISTICAL AREAS (MSA'S)<sup>1/</sup>**

<b><u>FLORENCE - MUSCLE SHOALS MSA</u></b>	<b>Dec p 2025</b>	<b>Nov r 2025</b>	<b>Dec r 2024</b>	<b>Net Change From :</b>	
				<b>Nov r 2025</b>	<b>Dec r 2024</b>
<b>TOTAL NONAGRICULTURAL EMPLOYMENT</b>	<b>60,900</b>	<b>60,800</b>	<b>60,700</b>	<b>100</b>	<b>200</b>
<b>GOODS PRODUCING</b>	<b>13,200</b>	<b>13,200</b>	<b>13,100</b>	<b>0</b>	<b>100</b>
Mining, Logging, and Construction	4,400	4,400	4,300	0	100
Manufacturing	8,800	8,800	8,800	0	0
<b>SERVICE PROVIDING</b>	<b>47,700</b>	<b>47,600</b>	<b>47,600</b>	<b>100</b>	<b>100</b>
Trade, Transportation, and Utilities	12,100	11,800	12,200	300	-100
Wholesale Trade	2,300	2,300	2,400	0	-100
Retail Trade	8,500	8,300	8,400	200	100
Transportation, Warehousing and Utilities	1,300	1,200	1,400	100	-100
Information	500	500	500	0	0
Financial Activities	2,500	2,500	2,600	0	-100
Professional and Business Services	3,300	3,400	3,400	-100	-100
Private Education and Health Services	8,300	8,300	8,100	0	200
Leisure and Hospitality	7,100	7,200	7,000	-100	100
Other Services	2,400	2,400	2,400	0	0
Government	11,500	11,500	11,400	0	100
Federal	1,000	1,000	1,100	0	-100
State and Local	10,500	10,500	10,300	0	200

<sup>1</sup> Place of work basis. p Preliminary. r Revised.

NOTE: Estimates prepared by the U.S. Department of Labor, Bureau of Labor Statistics.

Estimates adjusted to a 2024 benchmark. Based on the North American Industry Classification System (NAICS), 2022.

<b><u>GADSDEN MSA</u></b>	<b>Dec p 2025</b>	<b>Nov r 2025</b>	<b>Dec r 2024</b>	<b>Net Change From :</b>	
				<b>Nov r 2025</b>	<b>Dec r 2024</b>
<b>TOTAL NONAGRICULTURAL EMPLOYMENT</b>	<b>35,500</b>	<b>35,800</b>	<b>35,300</b>	<b>-300</b>	<b>200</b>
<b>GOODS PRODUCING</b>	<b>5,800</b>	<b>5,900</b>	<b>5,800</b>	<b>-100</b>	<b>0</b>
Mining, Logging, and Construction	1,200	1,200	1,200	0	0
Manufacturing	4,600	4,700	4,600	-100	0
<b>SERVICE PROVIDING</b>	<b>29,700</b>	<b>29,900</b>	<b>29,500</b>	<b>-200</b>	<b>200</b>
Trade, Transportation, and Utilities	7,000	6,900	7,000	100	0
Wholesale Trade	1,000	1,000	1,000	0	0
Retail Trade	5,000	4,900	4,900	100	100
Transportation, Warehousing and Utilities	1,000	1,000	1,100	0	-100
Information	200	200	200	0	0
Financial Activities	1,300	1,300	1,300	0	0
Professional and Business Services	2,600	2,700	2,700	-100	-100
Private Education and Health Services	7,900	7,900	7,700	0	200
Leisure and Hospitality	4,000	4,100	3,900	-100	100
Other Services	1,500	1,500	1,500	0	0
Government	5,200	5,300	5,200	-100	0
Federal	300	300	300	0	0
State and Local	4,900	5,000	4,900	-100	0

<sup>1</sup> Place of work basis. p Preliminary. r Revised.

NOTE: Estimates prepared by the U.S. Department of Labor, Bureau of Labor Statistics.

Estimates adjusted to a 2024 benchmark. Based on the North American Industry Classification System (NAICS), 2022.

**NONAGRICULTURAL WAGE AND SALARY EMPLOYMENT  
FOR ALABAMA METROPOLITAN STATISTICAL AREAS (MSA'S)<sup>1/</sup>**

<b><u>HUNTSVILLE MSA</u></b>	<b>Dec p 2025</b>	<b>Nov r 2025</b>	<b>Dec r 2024</b>	<b>Net Change From :</b>	
				<b>Nov r 2025</b>	<b>Dec r 2024</b>
<b>TOTAL NONAGRICULTURAL EMPLOYMENT</b>	<b>292,800</b>	<b>293,600</b>	<b>290,800</b>	<b>-800</b>	<b>2,000</b>
<b>GOODS PRODUCING</b>	<b>47,600</b>	<b>47,900</b>	<b>47,700</b>	<b>-300</b>	<b>-100</b>
Mining, Logging, and Construction	12,300	12,400	11,700	-100	600
Manufacturing	35,300	35,500	36,000	-200	-700
Durable Goods	31,200	31,300	31,700	-100	-500
Computer and Electronic Prod. Manufacturing	3,400	3,500	3,500	-100	-100
Transportation Equipment Manufacturing	20,000	20,100	20,300	-100	-300
Nondurable Goods	4,100	4,200	4,300	-100	-200
<b>SERVICE PROVIDING</b>	<b>245,200</b>	<b>245,700</b>	<b>243,100</b>	<b>-500</b>	<b>2,100</b>
Trade, Transportation, and Utilities	42,200	41,800	42,300	400	-100
Wholesale Trade	7,200	7,200	7,200	0	0
Retail Trade	29,000	28,700	28,800	300	200
General Merchandise Retailers	8,600	8,400	8,600	200	0
Transportation, Warehousing and Utilities	6,000	5,900	6,300	100	-300
Information	2,800	2,800	2,800	0	0
Financial Activities	9,000	9,000	9,000	0	0
Professional and Business Services	69,800	70,300	68,600	-500	1,200
Professional, Scientific and Technical Services	52,600	52,800	51,500	-200	1,100
Private Education and Health Services	26,900	27,000	26,200	-100	700
Leisure and Hospitality	25,300	25,600	24,300	-300	1,000
Food Services and Drinking Places	20,200	20,400	19,500	-200	700
Other Services	9,400	9,500	9,500	-100	-100
Government	59,800	59,700	60,400	100	-600
Federal	20,000	20,000	21,700	0	-1,700
State	9,100	9,100	8,800	0	300
Local	30,700	30,600	29,900	100	800

<sup>1</sup> Place of work basis. p Preliminary. r Revised.

NOTE: Estimates prepared by the U.S. Department of Labor, Bureau of Labor Statistics.

Estimates adjusted to a 2024 benchmark. Based on the North American Industry Classification System (NAICS), 2022.

<b><u>MOBILE MSA</u></b>	<b>Dec p 2025</b>	<b>Nov r 2025</b>	<b>Dec r 2024</b>	<b>Net Change From :</b>	
				<b>Nov r 2025</b>	<b>Dec r 2024</b>
<b>TOTAL NONAGRICULTURAL EMPLOYMENT</b>	<b>192,600</b>	<b>193,100</b>	<b>194,100</b>	<b>-500</b>	<b>-1,500</b>
<b>GOODS PRODUCING</b>	<b>32,200</b>	<b>32,600</b>	<b>31,800</b>	<b>-400</b>	<b>400</b>
Mining, Logging, and Construction	14,900	15,200	14,700	-300	200
Manufacturing	17,300	17,400	17,100	-100	200
<b>SERVICE PROVIDING</b>	<b>160,400</b>	<b>160,500</b>	<b>162,300</b>	<b>-100</b>	<b>-1,900</b>
Trade, Transportation, and Utilities	40,100	39,600	41,000	500	-900
Wholesale Trade	8,500	8,500	8,600	0	-100
Retail Trade	20,500	20,300	20,400	200	100
General Merchandise Retailers	5,400	5,400	5,300	0	100
Transportation, Warehousing and Utilities	11,100	10,800	12,000	300	-900
Information	2,200	2,200	2,200	0	0
Financial Activities	7,000	7,200	8,300	-200	-1,300
Professional and Business Services	21,700	21,900	22,400	-200	-700
Private Education and Health Services	30,300	30,400	29,600	-100	700
Health Care and Social Assistance	26,700	26,800	26,100	-100	600
Leisure and Hospitality	17,400	17,500	17,200	-100	200
Food Services and Drinking Places	14,200	14,400	13,900	-200	300
Other Services	11,000	11,100	11,200	-100	-200
Government	30,700	30,600	30,400	100	300
Federal	2,800	2,800	3,000	0	-200
State	12,200	12,100	11,600	100	600
Local	15,700	15,700	15,800	0	-100

<sup>1</sup> Place of work basis. p Preliminary. r Revised.

NOTE: Estimates prepared by the U.S. Department of Labor, Bureau of Labor Statistics.

Estimates adjusted to a 2024 benchmark. Based on the North American Industry Classification System (NAICS), 2022.

**NONAGRICULTURAL WAGE AND SALARY EMPLOYMENT  
FOR ALABAMA METROPOLITAN STATISTICAL AREAS (MSA'S)<sup>1/</sup>**

<b><u>MONTGOMERY MSA</u></b>	<b>Dec p 2025</b>	<b>Nov r 2025</b>	<b>Dec r 2024</b>	<b>Net Change From :</b>	
				<b>Nov r 2025</b>	<b>Dec r 2024</b>
<b>TOTAL NONAGRICULTURAL EMPLOYMENT</b>	<b>187,600</b>	<b>188,300</b>	<b>188,200</b>	<b>-700</b>	<b>-600</b>
<b>GOODS PRODUCING</b>	<b>28,600</b>	<b>28,700</b>	<b>28,400</b>	<b>-100</b>	<b>200</b>
Mining, Logging, and Construction	7,700	7,700	7,700	0	0
Manufacturing	20,900	21,000	20,700	-100	200
<b>SERVICE PROVIDING</b>	<b>159,000</b>	<b>159,600</b>	<b>159,800</b>	<b>-600</b>	<b>-800</b>
Trade, Transportation, and Utilities	31,200	31,000	32,100	200	-900
Wholesale Trade	6,200	6,200	6,300	0	-100
Retail Trade	18,200	18,100	18,300	100	-100
General Merchandise Retailers	5,100	5,000	5,100	100	0
Transportation, Warehousing and Utilities	6,800	6,700	7,500	100	-700
Information	1,800	1,800	1,800	0	0
Financial Activities	8,600	8,700	8,800	-100	-200
Finance and Insurance	6,100	6,200	6,300	-100	-200
Professional and Business Services	20,900	21,300	21,500	-400	-600
Private Education and Health Services	22,000	22,000	21,500	0	500
Health Care and Social Assistance	17,200	17,200	16,700	0	500
Leisure and Hospitality	17,700	18,000	17,100	-300	600
Food Services and Drinking Places	13,500	13,700	13,200	-200	300
Other Services	9,300	9,400	9,500	-100	-200
Government	47,500	47,400	47,500	100	0
Federal	7,300	7,300	8,200	0	-900
State	25,500	25,400	25,000	100	500
Local	14,700	14,700	14,300	0	400

1 Place of work basis. p Preliminary. r Revised.

NOTE: Estimates prepared by the U.S. Department of Labor, Bureau of Labor Statistics.

Estimates adjusted to a 2024 benchmark. Based on the North American Industry Classification System (NAICS), 2022.

<b><u>TUSCALOOSA MSA</u></b>	<b>Dec p 2025</b>	<b>Nov r 2025</b>	<b>Dec r 2024</b>	<b>Net Change From :</b>	
				<b>Nov r 2025</b>	<b>Dec r 2024</b>
<b>TOTAL NONAGRICULTURAL EMPLOYMENT</b>	<b>119,300</b>	<b>119,600</b>	<b>118,800</b>	<b>-300</b>	<b>500</b>
<b>GOODS PRODUCING</b>	<b>27,400</b>	<b>27,600</b>	<b>27,400</b>	<b>-200</b>	<b>0</b>
Mining, Logging, and Construction	7,600	7,700	7,400	-100	200
Manufacturing	19,800	19,900	20,000	-100	-200
<b>SERVICE PROVIDING</b>	<b>91,900</b>	<b>92,000</b>	<b>91,400</b>	<b>-100</b>	<b>500</b>
Trade, Transportation, and Utilities	18,100	18,000	18,500	100	-400
Wholesale Trade	2,400	2,400	2,400	0	0
Retail Trade	12,200	12,100	12,300	100	-100
Transportation, Warehousing and Utilities	3,500	3,500	3,800	0	-300
Information	800	800	800	0	0
Financial Activities	3,900	3,900	4,000	0	-100
Professional and Business Services	9,900	9,900	10,000	0	-100
Private Education and Health Services	11,000	11,100	10,800	-100	200
Leisure and Hospitality	12,500	12,700	12,100	-200	400
Other Services	4,300	4,300	4,300	0	0
Government	31,400	31,300	30,900	100	500
Federal	2,000	2,000	2,300	0	-300
State	15,800	15,700	15,400	100	400
Local	13,600	13,600	13,200	0	400

1 Place of work basis. p Preliminary. r Revised.

NOTE: Estimates prepared by the U.S. Department of Labor, Bureau of Labor Statistics.

Estimates adjusted to a 2024 benchmark. Based on the North American Industry Classification System (NAICS), 2022.



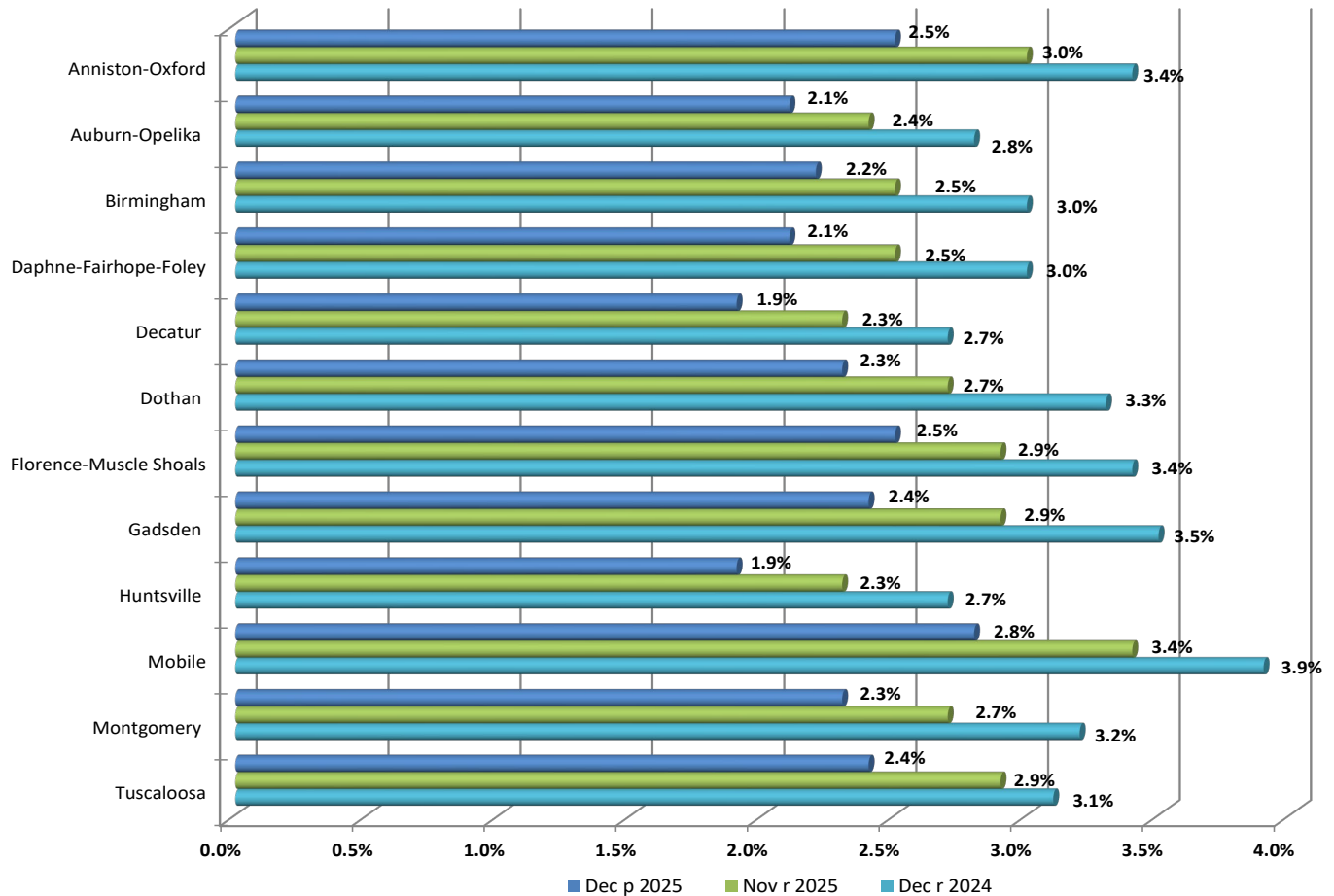
### ALABAMA, U.S., & COUNTY AREA CIVILIAN LABOR FORCE DATA

Area	Civilian Labor Force			Employment			Unemployment			Unemployment Rate		
	Dec p	Nov r	Dec r	Dec p	Nov r	Dec r	Dec p	Nov r	Dec r	Dec p	Nov r	Dec r
	2025	2025	2024	2025	2025	2024	2025	2025	2024	2025	2025	2024
Alabama (Seasonally Adjusted)	2,381,356	2,377,878	2,359,865	2,317,206	2,312,614	2,281,387	64,150	65,264	78,478	2.7%	2.7%	3.3%
Alabama (Not Seasonally Adjusted)	2,382,044	2,389,181	2,362,075	2,327,458	2,324,358	2,286,637	54,586	64,823	75,438	2.3%	2.7%	3.2%
Autauga	28,793	28,940	28,630	28,214	28,250	27,831	579	690	799	2.0%	2.4%	2.8%
Baldwin	117,419	117,464	117,329	114,942	114,564	113,866	2,477	2,900	3,463	2.1%	2.5%	3.0%
Barbour	8,792	8,675	8,893	8,531	8,373	8,518	261	302	375	3.0%	3.5%	4.2%
Bibb	8,807	8,823	8,715	8,617	8,595	8,437	190	228	278	2.2%	2.6%	3.2%
Blount	27,362	27,233	27,179	26,831	26,625	26,415	531	608	764	1.9%	2.2%	2.8%
Bullock	4,134	4,123	4,228	4,037	4,006	4,055	97	117	173	2.3%	2.8%	4.1%
Butler	8,107	8,065	8,077	7,875	7,799	7,748	232	266	329	2.9%	3.3%	4.1%
Calhoun	50,530	50,746	49,948	49,251	49,205	48,240	1,279	1,541	1,708	2.5%	3.0%	3.4%
Chambers	18,839	18,792	18,447	18,472	18,359	17,922	367	433	525	1.9%	2.3%	2.8%
Cherokee	10,633	10,603	10,382	10,404	10,319	10,066	229	284	316	2.2%	2.7%	3.0%
Chilton	20,354	20,319	20,179	19,953	19,847	19,607	401	472	572	2.0%	2.3%	2.8%
Choctaw	4,311	4,248	4,314	4,175	4,083	4,112	136	165	202	3.2%	3.9%	4.7%
Clarke	8,050	7,936	8,560	7,719	7,565	8,045	331	371	515	4.1%	4.7%	6.0%
Clay	6,044	6,046	5,975	5,897	5,893	5,775	147	153	200	2.4%	2.5%	3.3%
Cleburne	6,645	6,577	6,598	6,509	6,418	6,400	136	159	198	2.0%	2.4%	3.0%
Coffee	24,438	24,383	23,862	23,920	23,764	23,031	518	619	831	2.1%	2.5%	3.5%
Colbert	26,559	26,716	26,319	25,869	25,897	25,368	690	819	951	2.6%	3.1%	3.6%
Conecuh	4,081	4,053	4,020	3,938	3,885	3,836	143	168	184	3.5%	4.1%	4.6%
Coosa	4,399	4,411	4,393	4,290	4,276	4,216	109	135	177	2.5%	3.1%	4.0%
Covington	15,681	15,537	15,254	15,319	15,121	14,746	362	416	508	2.3%	2.7%	3.3%
Crenshaw	5,553	5,464	5,601	5,417	5,311	5,403	136	153	198	2.4%	2.8%	3.5%
Cullman	40,474	40,374	40,037	39,640	39,385	38,890	834	989	1,147	2.1%	2.4%	2.9%
Dale	19,309	19,321	19,065	18,830	18,734	18,361	479	587	704	2.5%	3.0%	3.7%
Dallas	14,573	14,677	14,664	14,056	13,978	13,831	517	699	833	3.5%	4.8%	5.7%
DeKalb	33,439	33,322	32,851	32,769	32,476	31,917	670	846	934	2.0%	2.5%	2.8%
Elmore	43,076	43,319	42,851	42,285	42,389	41,708	791	930	1,143	1.8%	2.1%	2.7%
Escambia	13,162	13,180	13,150	12,765	12,704	12,614	397	476	536	3.0%	3.6%	4.1%
Etowah	42,728	43,091	42,367	41,711	41,859	40,869	1,017	1,232	1,498	2.4%	2.9%	3.5%
Fayette	6,604	6,646	6,595	6,446	6,455	6,390	158	191	205	2.4%	2.9%	3.1%
Franklin	14,104	14,113	13,948	13,799	13,761	13,532	305	352	416	2.2%	2.5%	3.0%
Geneva	11,653	11,629	11,640	11,403	11,339	11,298	250	290	342	2.1%	2.5%	2.9%
Greene	2,383	2,399	2,426	2,271	2,267	2,240	112	132	186	4.7%	5.5%	7.7%
Hale	5,722	5,691	5,700	5,524	5,437	5,464	198	254	236	3.5%	4.5%	4.1%
Henry	8,037	8,003	8,070	7,854	7,785	7,787	183	218	283	2.3%	2.7%	3.5%
Houston	48,684	48,874	48,613	47,548	47,528	46,955	1,136	1,346	1,658	2.3%	2.8%	3.4%
Jackson	20,869	20,921	21,095	20,320	20,257	20,298	549	664	797	2.6%	3.2%	3.8%
Jefferson	324,004	325,097	319,824	316,408	316,083	309,544	7,596	9,014	10,280	2.3%	2.8%	3.2%
Lamar	5,334	5,337	5,420	5,198	5,184	5,239	136	153	181	2.5%	2.9%	3.3%
Lauderdale	44,384	44,602	43,877	43,290	43,343	42,417	1,094	1,259	1,460	2.5%	2.8%	3.3%
Lawrence	16,339	16,299	16,226	16,011	15,917	15,747	328	382	479	2.0%	2.3%	3.0%
Lee	90,184	90,655	89,065	88,398	88,595	86,639	1,786	2,060	2,426	2.0%	2.3%	2.7%
Limestone	58,246	58,418	57,560	57,130	57,097	56,014	1,116	1,321	1,546	1.9%	2.3%	2.7%
Lowndes	3,937	3,897	3,983	3,797	3,715	3,799	140	182	184	3.6%	4.7%	4.6%
Macon	7,786	7,805	7,760	7,547	7,511	7,433	239	294	327	3.1%	3.8%	4.2%
Madison	225,400	226,840	222,127	221,029	221,717	216,147	4,371	5,123	5,980	1.9%	2.3%	2.7%
Marengo	7,448	7,369	7,465	7,228	7,115	7,130	220	254	335	3.0%	3.4%	4.5%
Marion	12,169	12,147	12,312	11,872	11,788	11,850	297	359	462	2.4%	3.0%	3.8%
Marshall	45,681	45,637	45,065	44,798	44,597	43,865	883	1,040	1,200	1.9%	2.3%	2.7%
Mobile	188,135	189,511	188,783	182,822	183,105	181,369	5,313	6,406	7,414	2.8%	3.4%	3.9%
Monroe	6,847	6,788	6,906	6,521	6,396	6,537	326	392	369	4.8%	5.8%	5.3%
Montgomery	104,596	105,392	104,177	101,955	102,253	100,574	2,641	3,139	3,603	2.5%	3.0%	3.5%
Morgan	61,814	61,825	61,165	60,631	60,440	59,547	1,183	1,385	1,618	1.9%	2.2%	2.6%
Perry	2,411	2,412	2,455	2,289	2,269	2,297	122	143	158	5.1%	5.9%	6.4%
Pickens	7,000	6,997	6,976	6,796	6,745	6,704	204	252	272	2.9%	3.6%	3.9%
Pike	15,652	15,669	15,575	15,264	15,227	15,056	388	442	519	2.5%	2.8%	3.3%
Randolph	8,614	8,607	8,649	8,398	8,361	8,318	216	246	331	2.5%	2.9%	3.8%
Russell	23,149	23,256	22,904	22,528	22,494	22,048	621	762	856	2.7%	3.3%	3.7%
Shelby	124,451	124,717	122,693	122,224	122,082	119,658	2,227	2,635	3,035	1.8%	2.1%	2.5%
St. Clair	45,995	46,118	45,371	45,109	45,075	44,160	886	1,043	1,211	1.9%	2.3%	2.7%
Sumter	4,436	4,463	4,447	4,297	4,290	4,238	139	173	209	3.1%	3.9%	4.7%
Talladega	35,284	35,447	34,879	34,361	34,307	33,632	923	1,140	1,247	2.6%	3.2%	3.6%
Tallapoosa	16,445	16,516	16,383	16,012	16,001	15,799	433	515	584	2.6%	3.1%	3.6%
Tuscaloosa	113,497	114,177	111,938	110,891	111,126	108,692	2,606	3,051	3,246	2.3%	2.7%	2.9%
Walker	27,416	27,486	27,114	26,805	26,759	26,249	611	727	865	2.2%	2.6%	3.2%
Washington	7,638	7,588	7,544	7,441	7,364	7,242	197	224	302	2.6%	3.0%	4.0%
Wilcox	3,513	3,466	3,584	3,354	3,263	3,363	159	203	221	4.5%	5.9%	6.2%
Winston	9,892	9,929	9,873	9,656	9,632	9,540	236	297	333	2.4%	3.0%	3.4%
United States (Seasonally Adjusted)	171,495,000	171,541,000	168,506,000	163,992,000	163,760,000	161,586,000	7,503,000	7,781,000	6,920,000	4.4%	4.5%	4.1%
United States (Not Seasonally Adj.)	170,723,000	171,467,000	167,746,000	163,720,000	164,066,000	161,294,000	7,003,000	7,401,000	6,452,000	4.1%	4.3%	3.8%

Counties and Metropolitan Statistical Areas are comparable to the not seasonally adjusted labor force data.

Estimates prepared by the Alabama Department of Workforce in cooperation with the Bureau of Labor Statistics, based on a 2024 benchmark.

## ALABAMA METROPOLITAN STATISTICAL AREA UNEMPLOYMENT RATES



Estimates prepared by the Alabama Department of Workforce in Cooperation with the Bureau of Labor Statistics, based on 2024 benchmark.

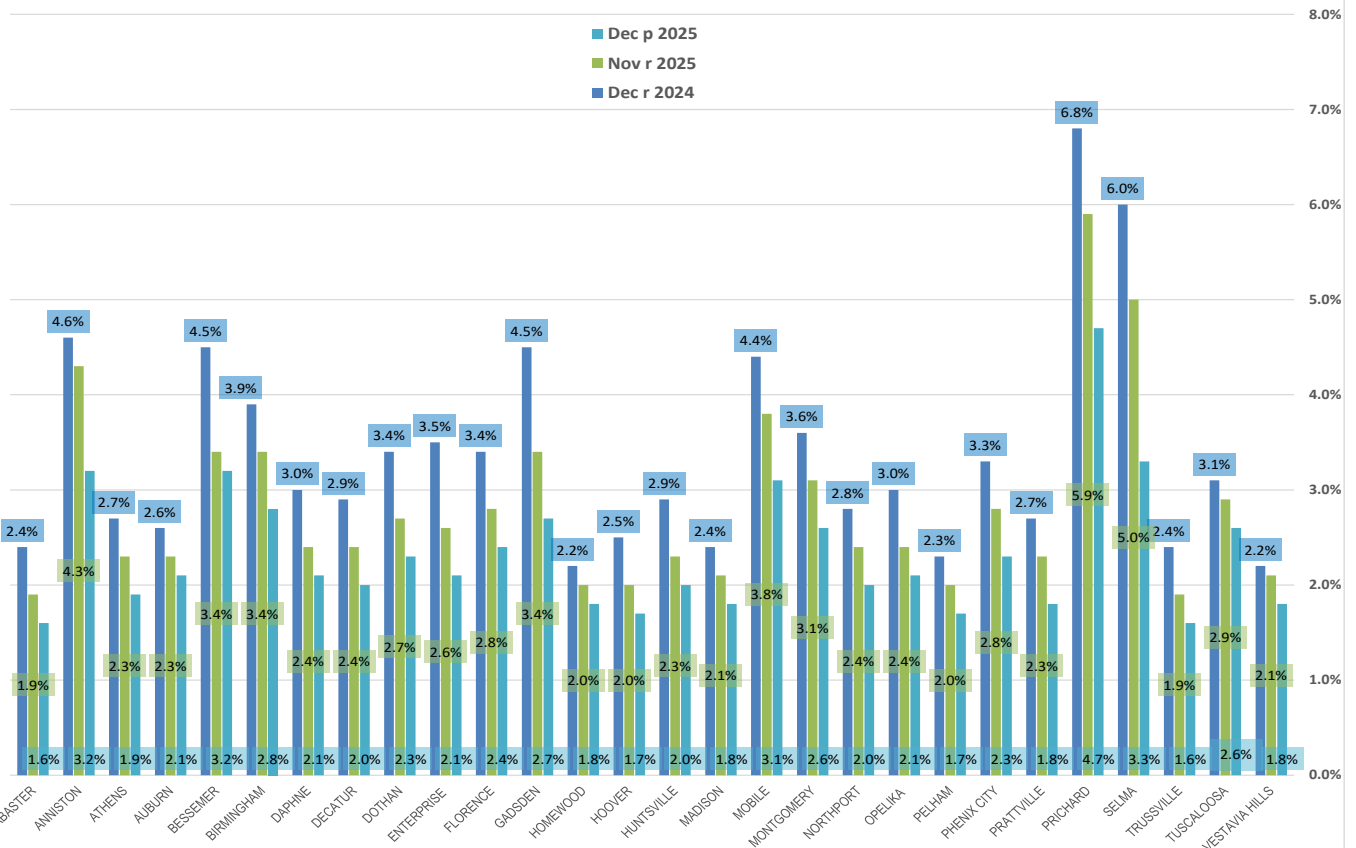
METROPOLITAN STATISTICAL AREAS  
CIVILIAN LABOR FORCE DATA

Area	Civilian Labor Force			Employment			Unemployment			Unemployment Rate		
	Dec p 2025	Nov r 2025	Dec r 2024	Dec p 2025	Nov r 2025	Dec r 2024	Dec p 2025	Nov r 2025	Dec r 2024	Dec p 2025	Nov r 2025	Dec r 2024
Anniston-Oxford MSA	50,530	50,746	49,948	49,251	49,205	48,240	1,279	1,541	1,708	2.5%	3.0%	3.4%
Auburn-Opelika MSA	97,970	98,460	96,825	95,945	96,106	94,072	2,025	2,354	2,753	2.1%	2.4%	2.8%
Birmingham MSA	578,389	579,793	571,075	565,947	565,066	554,070	12,442	14,727	17,005	2.2%	2.5%	3.0%
Daphne-Fairhope-Foley MSA	117,419	117,464	117,329	114,942	114,564	113,866	2,477	2,900	3,463	2.1%	2.5%	3.0%
Decatur MSA	78,153	78,124	77,391	76,642	76,357	75,294	1,511	1,767	2,097	1.9%	2.3%	2.7%
Dothan MSA	68,374	68,506	68,323	66,805	66,652	66,040	1,569	1,854	2,283	2.3%	2.7%	3.3%
Florence-Muscle Shoals MSA	70,943	71,318	70,196	69,159	69,240	67,785	1,784	2,078	2,411	2.5%	2.9%	3.4%
Gadsden MSA	42,728	43,091	42,367	41,711	41,859	40,869	1,017	1,232	1,498	2.4%	2.9%	3.5%
Huntsville MSA	283,646	285,258	279,687	278,159	278,814	272,161	5,487	6,444	7,526	1.9%	2.3%	2.7%
Mobile MSA	188,135	189,511	188,783	182,822	183,105	181,369	5,313	6,406	7,414	2.8%	3.4%	3.9%
Montgomery MSA	180,402	181,548	179,641	176,251	176,607	173,912	4,151	4,941	5,729	2.3%	2.7%	3.2%
Tuscaloosa MSA	128,602	129,264	127,040	125,482	125,575	123,100	3,120	3,689	3,940	2.4%	2.9%	3.1%

Counties and Metropolitan Statistical Areas are comparable to the not seasonally adjusted labor force data.

Estimates prepared by the Alabama Department of Workforce in cooperation with the Bureau of Labor Statistics, based on a 2024 benchmark.

## SELECTED CITY UNEMPLOYMENT RATES



Estimates prepared by the Alabama Department of Workforce in Cooperation with the Bureau of Labor Statistics, based on 2024 benchmark.

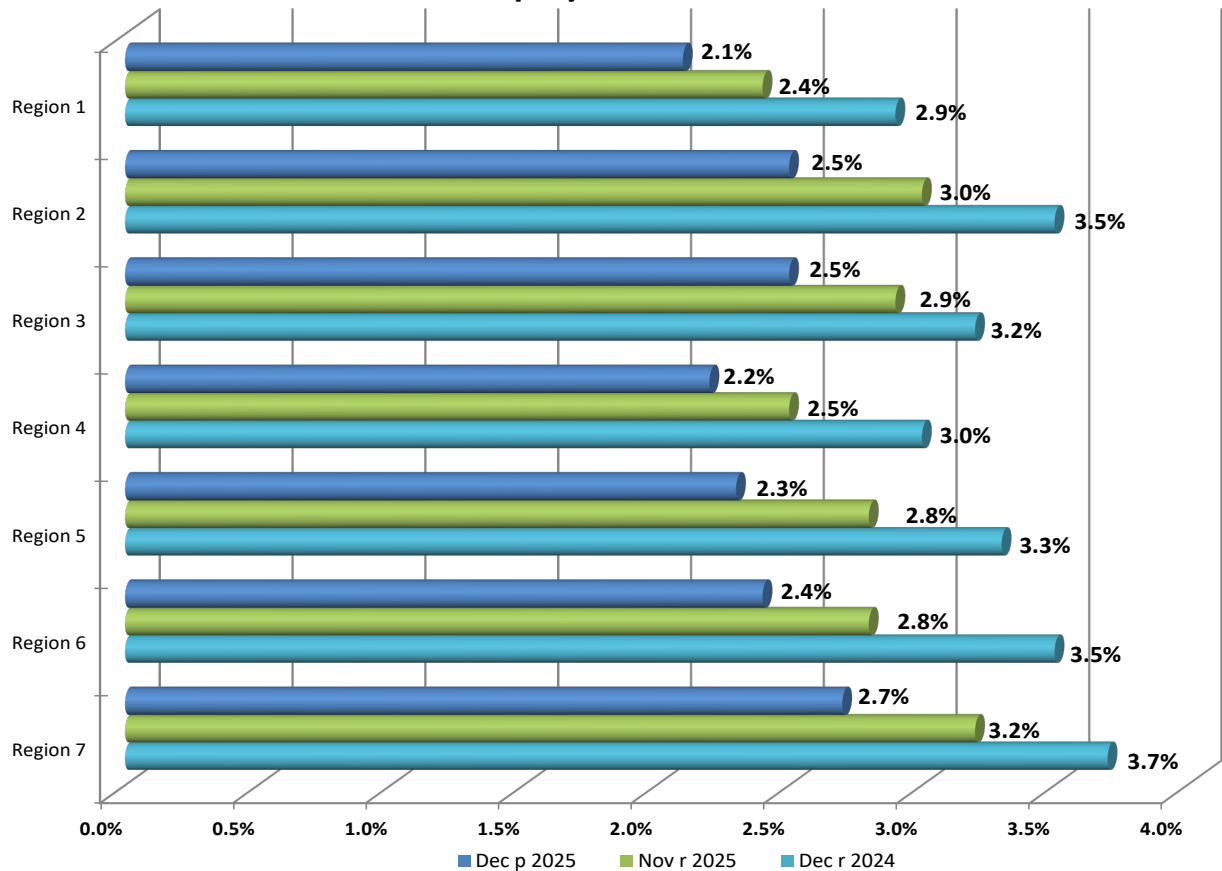
## CIVILIAN LABOR FORCE DATA

Area	Civilian Labor Force			Employment			Unemployment			Unemployment Rate		
	Dec p 2025	Nov r 2025	Dec r 2024	Dec p 2025	Nov r 2025	Dec r 2024	Dec p 2025	Nov r 2025	Dec r 2024	Dec p 2025	Nov r 2025	Dec r 2024
ALABASTER CITY	18,192	18,231	17,959	17,898	17,877	17,522	294	354	437	1.6%	1.9%	2.4%
ANNISTON CITY	8,371	8,459	8,321	8,107	8,099	7,940	264	360	381	3.2%	4.3%	4.6%
ATHENS CITY	15,703	15,749	15,525	15,401	15,392	15,100	302	357	425	1.9%	2.3%	2.7%
AUBURN CITY	40,468	40,634	39,866	39,629	39,718	38,841	839	916	1,025	2.1%	2.3%	2.6%
BESSEMER CITY	9,846	9,859	9,762	9,532	9,522	9,325	314	337	437	3.2%	3.4%	4.5%
BIRMINGHAM CITY	95,163	95,615	94,149	92,496	92,402	90,491	2,667	3,213	3,658	2.8%	3.4%	3.9%
DAPHNE CITY	14,639	14,638	14,631	14,332	14,284	14,197	307	354	434	2.1%	2.4%	3.0%
DECATUR CITY	28,794	28,816	28,525	28,212	28,123	27,708	582	693	817	2.0%	2.4%	2.9%
DOTHAN CITY	32,295	32,420	32,227	31,551	31,533	31,147	744	887	1,080	2.3%	2.7%	3.4%
ENTERPRISE CITY	12,751	12,733	12,459	12,480	12,399	12,018	271	334	441	2.1%	2.6%	3.5%
FLORENCE CITY	18,747	18,836	18,554	18,289	18,311	17,920	458	525	634	2.4%	2.8%	3.4%
GADSDEN CITY	12,713	12,841	12,686	12,366	12,410	12,117	347	431	569	2.7%	3.4%	4.5%
HOMESWOOD CITY	14,876	14,893	14,615	14,608	14,593	14,291	268	300	324	1.8%	2.0%	2.2%
HOOVER CITY	50,237	50,346	49,535	49,368	49,315	48,306	869	1,031	1,229	1.7%	2.0%	2.5%
HUNTSVILLE CITY	123,385	124,164	121,721	120,914	121,278	118,251	2,471	2,886	3,470	2.0%	2.3%	2.9%
MADISON CITY	32,692	32,872	32,198	32,116	32,191	31,423	576	681	775	1.8%	2.1%	2.4%
MOBILE CITY	86,826	87,556	87,340	84,125	84,256	83,457	2,701	3,300	3,883	3.1%	3.8%	4.4%
MONTGOMERY CITY	90,288	90,995	89,951	87,942	88,199	86,751	2,346	2,796	3,200	2.6%	3.1%	3.6%
NORTHPORT CITY	15,754	15,848	15,562	15,438	15,471	15,132	316	377	430	2.0%	2.4%	2.8%
OPELIKA CITY	16,466	16,559	16,298	16,125	16,161	15,804	341	398	494	2.1%	2.4%	3.0%
PELHAM CITY	14,604	14,636	14,389	14,363	14,346	14,061	241	290	328	1.7%	2.0%	2.3%
PHENIX CITY	17,195	17,260	16,996	16,791	16,777	16,438	404	483	558	2.3%	2.8%	3.3%
PRATTVILLE CITY	19,590	19,715	19,497	19,231	19,257	18,970	359	458	527	1.8%	2.3%	2.7%
PRICHARD CITY	6,375	6,469	6,465	6,075	6,085	6,027	300	384	438	4.7%	5.9%	6.8%
SELMA CITY	6,463	6,545	6,542	6,252	6,217	6,152	211	328	390	3.3%	5.0%	6.0%
TRUSSVILLE CITY	13,995	14,022	13,806	13,766	13,752	13,468	229	270	338	1.6%	1.9%	2.4%
TUSCALOOSA CITY	50,990	51,276	50,233	49,660	49,765	48,675	1,330	1,511	1,558	2.6%	2.9%	3.1%
VESTAVIA HILLS CITY	18,814	18,856	18,495	18,480	18,461	18,079	334	395	416	1.8%	2.1%	2.2%

City Areas are comparable to the not seasonally adjusted labor force data.

Estimates prepared by the Alabama Department of Workforce in cooperation with the Bureau of Labor Statistics, based on a 2024 benchmark.

### Alabama Workforce Regions Unemployment Rates



Areas are comparable to the not seasonally adjusted labor force data.

### WORKFORCE REGIONS CIVILIAN LABOR FORCE DATA

Area	Civilian Labor Force			Employment			Unemployment			Unemployment Rate		
	Dec p 2025	Nov r 2025	Dec r 2024	Dec p 2025	Nov r 2025	Dec r 2024	Dec p 2025	Nov r 2025	Dec r 2024	Dec p 2025	Nov r 2025	Dec r 2024
Region 1	609,370	611,143	602,455	596,814	596,307	585,132	12,556	14,836	17,323	2.1%	2.4%	2.9%
Region 2	160,478	161,117	158,798	156,531	156,362	153,300	3,947	4,755	5,498	2.5%	3.0%	3.5%
Region 3	161,231	161,902	159,682	157,268	157,214	154,534	3,963	4,688	5,148	2.5%	2.9%	3.2%
Region 4	569,582	570,970	562,360	557,330	556,471	545,633	12,252	14,499	16,727	2.2%	2.5%	3.0%
Region 5	362,322	364,195	359,940	353,880	354,096	348,152	8,442	10,099	11,788	2.3%	2.8%	3.3%
Region 6	165,906	165,620	164,650	161,961	160,981	158,903	3,945	4,639	5,747	2.4%	2.8%	3.5%
Region 7	353,156	354,234	354,190	343,677	342,929	340,984	9,479	11,305	13,206	2.7%	3.2%	3.7%

Areas are comparable to the not seasonally adjusted labor force data.

Estimates prepared by the Alabama Department of Workforce in cooperation with the Bureau of Labor Statistics, based on a 2024 benchmark.

## Alabama Counties Ranked in Descending Order Unemployment Rates

Current December 2025

2024 Annual Average

Rank	Area	Rate
1	Perry County, AL	5.1%
2	Monroe County, AL	4.8%
3	Greene County, AL	4.7%
4	Wilcox County, AL	4.5%
5	Clarke County, AL	4.1%
6	Lowndes County, AL	3.6%
7	Conecuh County, AL	3.5%
7	Dallas County, AL	3.5%
7	Hale County, AL	3.5%
10	Choctaw County, AL	3.2%
11	Macon County, AL	3.1%
11	Sumter County, AL	3.1%
13	Barbour County, AL	3.0%
13	Escambia County, AL	3.0%
13	Marengo County, AL	3.0%
16	Butler County, AL	2.9%
16	Pickens County, AL	2.9%
18	Mobile County, AL	2.8%
19	Russell County, AL	2.7%
20	Colbert County, AL	2.6%
20	Jackson County, AL	2.6%
20	Talladega County, AL	2.6%
20	Tallapoosa County, AL	2.6%
20	Washington County, AL	2.6%
25	Calhoun County, AL	2.5%
25	Coosa County, AL	2.5%
25	Dale County, AL	2.5%
25	Lamar County, AL	2.5%
25	Lauderdale County, AL	2.5%
25	Montgomery County, AL	2.5%
25	Pike County, AL	2.5%
25	Randolph County, AL	2.5%
33	Clay County, AL	2.4%
33	Crenshaw County, AL	2.4%
33	Etowah County, AL	2.4%
33	Fayette County, AL	2.4%
33	Marion County, AL	2.4%
33	Winston County, AL	2.4%
39	Bullock County, AL	2.3%
39	Covington County, AL	2.3%
39	Henry County, AL	2.3%
39	Houston County, AL	2.3%
39	Jefferson County, AL	2.3%
39	Tuscaloosa County, AL	2.3%
45	Bibb County, AL	2.2%
45	Cherokee County, AL	2.2%
45	Franklin County, AL	2.2%
45	Walker County, AL	2.2%
49	Baldwin County, AL	2.1%
49	Coffee County, AL	2.1%
49	Cullman County, AL	2.1%
49	Geneva County, AL	2.1%
53	Autauga County, AL	2.0%
53	Chilton County, AL	2.0%
53	Cleburne County, AL	2.0%
53	DeKalb County, AL	2.0%
53	Lawrence County, AL	2.0%
53	Lee County, AL	2.0%
59	Blount County, AL	1.9%
59	Chambers County, AL	1.9%
59	Limestone County, AL	1.9%
59	Madison County, AL	1.9%
59	Marshall County, AL	1.9%
59	Morgan County, AL	1.9%
59	St. Clair County, AL	1.9%
66	Elmore County, AL	1.8%
66	Shelby County, AL	1.8%

Rank	Area	Rate
1	Greene County, AL	6.7%
1	Perry County, AL	6.7%
3	Wilcox County, AL	6.2%
4	Dallas County, AL	5.5%
5	Clarke County, AL	5.2%
6	Monroe County, AL	5.0%
7	Lowndes County, AL	4.7%
7	Sumter County, AL	4.7%
9	Choctaw County, AL	4.5%
10	Macon County, AL	4.4%
11	Barbour County, AL	4.3%
11	Hale County, AL	4.3%
13	Conecuh County, AL	4.2%
14	Escambia County, AL	4.1%
15	Marengo County, AL	4.0%
16	Butler County, AL	3.9%
16	Pickens County, AL	3.9%
18	Mobile County, AL	3.8%
19	Bullock County, AL	3.7%
20	Randolph County, AL	3.6%
20	Russell County, AL	3.6%
20	Washington County, AL	3.6%
23	Dale County, AL	3.5%
23	Jackson County, AL	3.5%
23	Marion County, AL	3.5%
23	Pike County, AL	3.5%
27	Crenshaw County, AL	3.4%
27	Fayette County, AL	3.4%
27	Lamar County, AL	3.4%
27	Montgomery County, AL	3.4%
27	Talladega County, AL	3.4%
27	Tallapoosa County, AL	3.4%
33	Colbert County, AL	3.3%
33	Coosa County, AL	3.3%
33	Covington County, AL	3.3%
33	Etowah County, AL	3.3%
33	Winston County, AL	3.3%
38	Calhoun County, AL	3.2%
38	Henry County, AL	3.2%
38	Lauderdale County, AL	3.2%
41	Cherokee County, AL	3.1%
41	Coffee County, AL	3.1%
41	Houston County, AL	3.1%
41	Jefferson County, AL	3.1%
41	Tuscaloosa County, AL	3.1%
41	Walker County, AL	3.1%
47	Bibb County, AL	3.0%
47	Clay County, AL	3.0%
49	Franklin County, AL	2.9%
49	Geneva County, AL	2.9%
51	Chambers County, AL	2.8%
51	Chilton County, AL	2.8%
51	Cleburne County, AL	2.8%
51	Lee County, AL	2.8%
55	Autauga County, AL	2.7%
55	Baldwin County, AL	2.7%
55	Blount County, AL	2.7%
55	Cullman County, AL	2.7%
55	DeKalb County, AL	2.7%
55	Lawrence County, AL	2.7%
55	Marshall County, AL	2.7%
62	Elmore County, AL	2.6%
62	Madison County, AL	2.6%
62	Morgan County, AL	2.6%
62	St. Clair County, AL	2.6%
66	Limestone County, AL	2.5%
67	Shelby County, AL	2.4%

## Release Schedule

Local Area Unemployment Statistics (LAUS) & Current Employment Statistics 2025 Publication Schedule	
Reference Month	Publication Date
January	Monday, 3/17/2025, 8:00AM
February	Friday, 3/28/2025, 8:00AM
March	Friday, 4/18/2025, 8:00AM
April	Friday, 5/16/2025, 8:00AM <i>Southeastern States Map available Wednesday, 5/21/2025</i>
May	Friday, 6/20/2025, 8:00AM <i>Southeastern States Map available Tuesday, 6/24/2025</i>
June	Friday, 7/18/2025, 8:00AM
July	Friday, 8/15/2025, 8:00AM <i>Southeastern States Map available Tuesday, 8/19/2025</i>
August	Friday, 9/19/2025, 8:00AM
September	Friday, 12/5/2025, 8:00AM <i>Southeastern States Map available Thursday, 12/11/2025</i>
October	<i>LAUS data unavailable due to the 2025 lapse in federal appropriations.</i>
November	Wednesday, 1/7/2026, 8:00AM
December	Friday, 1/23/2026, 8:00AM <i>Southeastern States Map available Tuesday, 1/27/2026</i>



## Technical Support

Local Area Unemployment Statistics  
Labor Market Information Division  
Alabama Department of Workforce  
649 Monroe St, Room 4427  
Montgomery, AL 36131-2280

334-956-7485 phone/fax

<http://www2.labor.alabama.gov/Laus/Default.aspx> website

An Equal Opportunity Employer / Program  
Auxiliary aids and services available upon request to individuals with disabilities.  
Dial 711 for TTY accessibility.