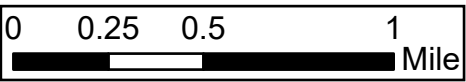
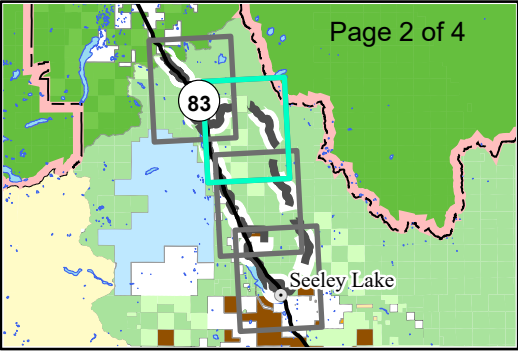




North Seeley Wildland Urban Interface - Highway 83 Project  
Scoping Map, Transportation  
Seeley Lake Ranger District, Lolo National Forest



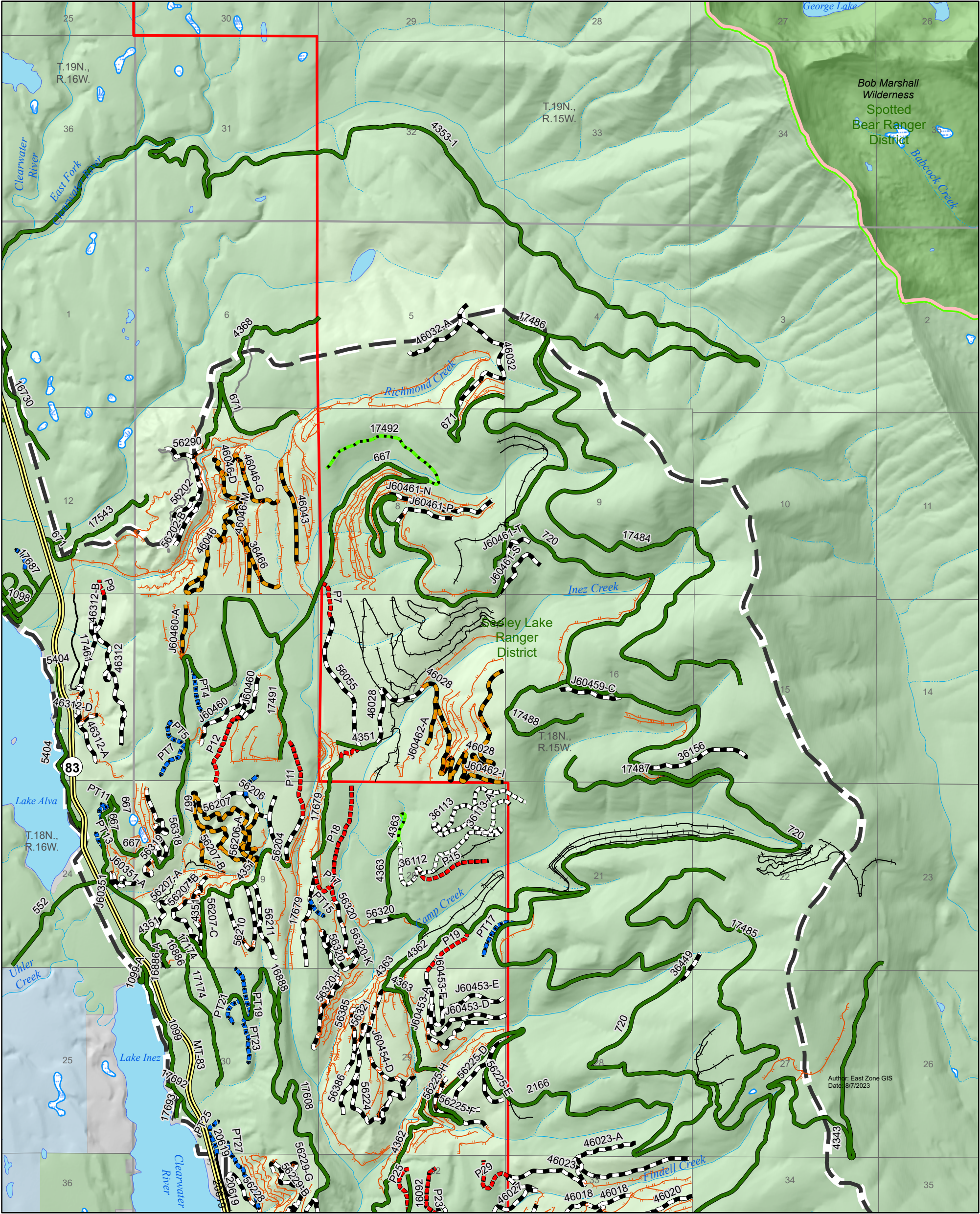
**USDA**

**FOREST SERVICE**  
**U.S.**  
DEPARTMENT OF AGRICULTURE

Disclaimer  
"This product is produced from information prepared by the USDA, Forest Service, or from other suppliers. The Forest Service can not assure the reliability or suitability of this information for a particular purpose. The data and product accuracy may vary due to compilation from various sources, including modeling and interpretation, and may not meet National Map Accuracy Standards. This information may be updated, corrected, or otherwise modified without notification. For more information contact: (Seeley Lake Ranger District, 406-677-2233). The USDA is an equal opportunity provider and employer."

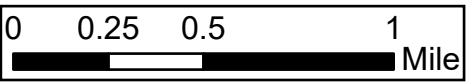
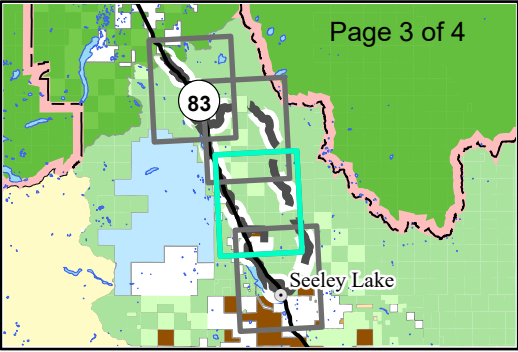
- Project Boundary
- Ranger District Boundary
- Wilderness Areas
- Seeley-Swan Wildland Urban Interface (2012/2018)
- Ownership**
- Lolo National Forest
- Lolo National Forest (Acq.)
- Flathead National Forest
- Montana Fish, Wildlife, and Parks
- Private
- Highway 83
- County Roads
- National Forest System Road

- Other Road
- Previously Decommissioned
- Undetermined
- Project Roads - Proposed Action**
- Add to National Forest System
- Add to National Forest System - Store
- Decommission Existing Road
- New Road Construction
- Temporary Road
- New Road Construction on Previously Decommissioned Prism - Store
- National Forest System Road - Store



Author: East Zone GIS  
Date: 8/7/2023

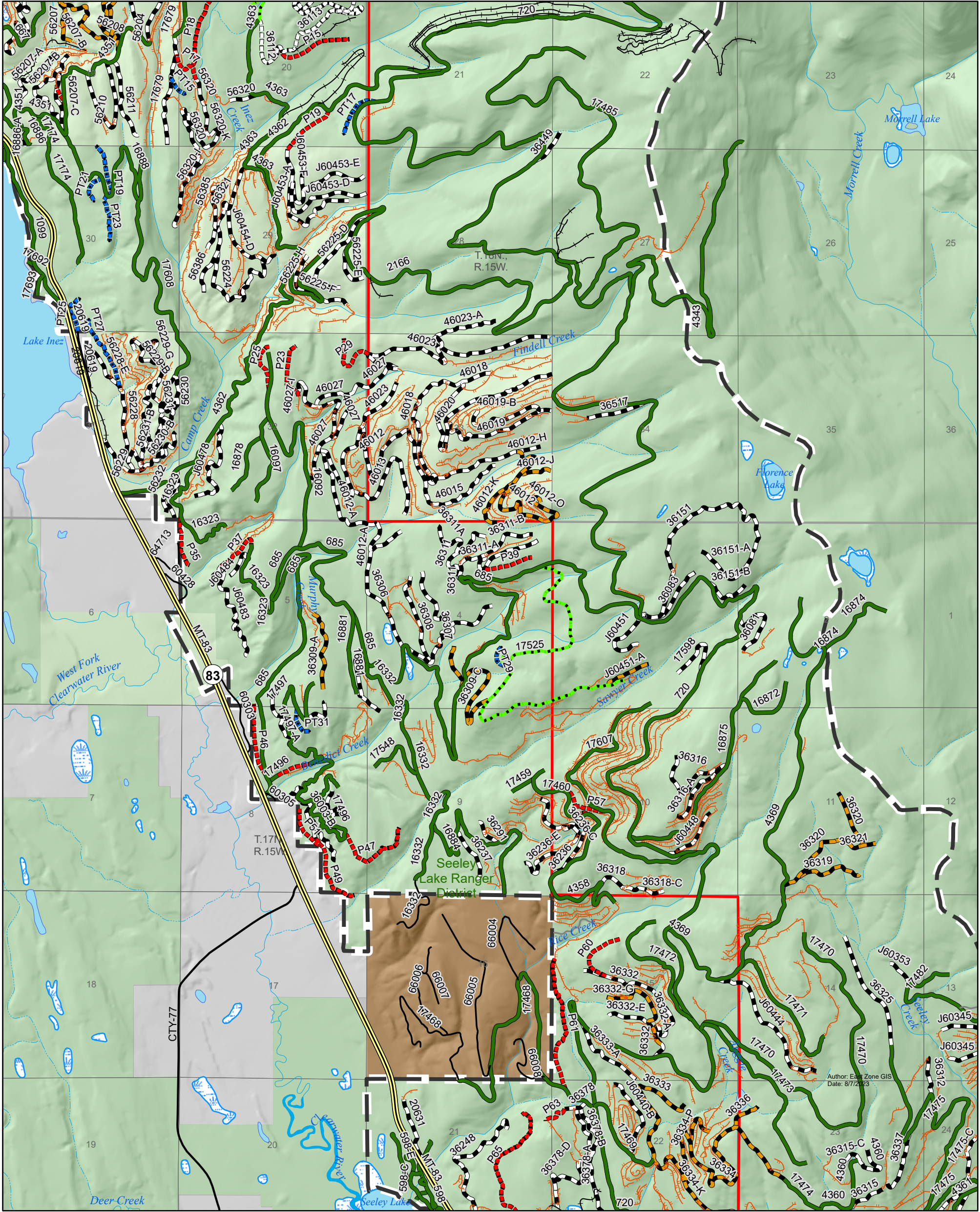
North Seeley Wildland Urban Interface - Highway 83 Project  
Scoping Map, Transportation  
Seeley Lake Ranger District, Lolo National Forest



Disclaimer  
"This product is produced from information prepared by the USDA, Forest Service, or from other suppliers. The Forest Service can not assure the reliability or suitability of this information for a particular purpose. The data and product accuracy may vary due to compilation from various sources, including modeling and interpretation, and may not meet National Map Accuracy Standards. This information may be updated, corrected, or otherwise modified without notification. For more information contact: (Seeley Lake Ranger District, 406-677-2233). The USDA is an equal opportunity provider and employer."

Author: Eastern GIS; Date: 8/7/2023

- Project Boundary
- Ranger District Boundary
- Wilderness Areas
- Seeley-Swan Wildland Urban Interface (2012/2018)
- Ownership
  - Lolo National Forest
  - Lolo National Forest (Acq.)
  - Flathead National Forest
  - Montana State Trust Lands
  - Private
- Highway 83
- County Roads
- National Forest System Road
- Other Road
- Previously Decommissioned
- Undetermined
- Project Roads - Proposed Action
  - Add to National Forest System
  - Add to National Forest System - Store
  - Decommission Existing Road
  - New Road Construction
  - Temporary Road
  - New Road Construction on Previously Decommissioned Prism - Store
  - National Forest System Road - Store



Author: Eastern GIS  
Date: 8/7/2023

