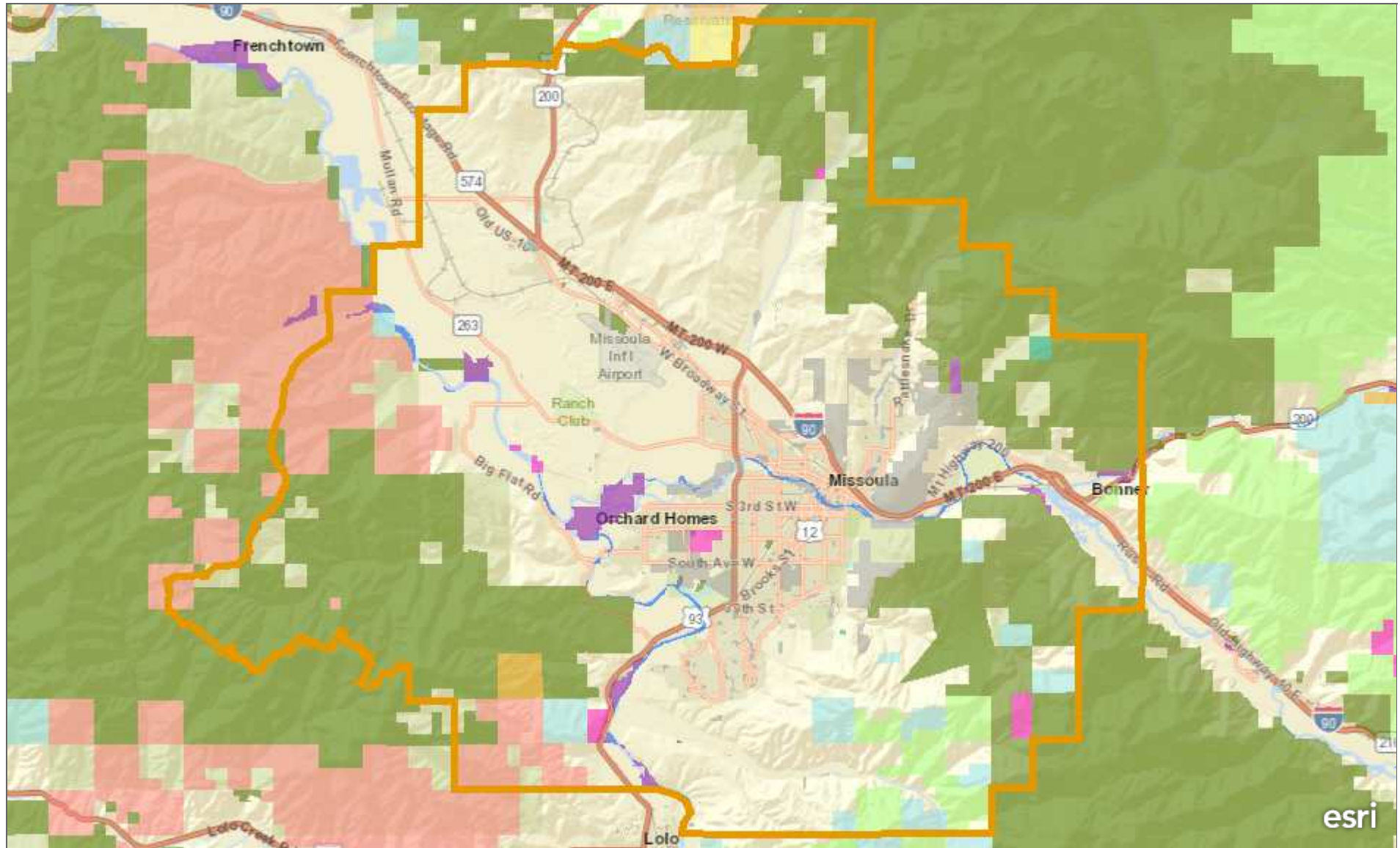


## 2017 Open Space Parks Trails Master Plan Discussion Map



This map contains parks, trails, and planning boundaries to support discussion of 2017 master plan efforts

City of Missoula, 435 Ryman St., Missoula, MT 59802, Ph: 406-552-6000, TTY: 406-552-6131 Missoula County, 199 West Pine Street, Missoula, MT 59802, (406) 721-5700, (406) 258-4700 fax | Bureau of Land Management, Esri, HERE, Garmin, NGA, USGS, NPS