

THE MEADE COUNTY

JANUARY 2022
FREE EDITION

Magazine

The future is on the horizon

**TAKE A PEAK INSIDE TO SEE
WHAT MAKES OUR SMALL
COMMUNITY STANDOUT!**

the Meade County
Messenger **MCM**
Serving Meade County Since 1882

**We've got
some history
here!**

**Meade County's
ONLY:**

**Locally Chartered
Locally Owned
Locally Managed
Local Bank
Since 1984**



Member
FDIC



MEADE COUNTY BANK

LOCALLY CHARTERED • LOCALLY OWNED • LOCALLY MANAGED • LOCAL BANK Since 1984

Brandenburg • Flaherty • Muldraugh • 270-422-4141 • meadecountybank.com

The Lost Cities of Meade County.....5
Today's Meade County Cities / Towns.....10
Map of Meade County.....14-15
Nucor still on track for late 2022 completion.....16
Happy New Year from Judge Executive Stith.....20
Directory of County Officials.....22
Directory of City Officials & City Halls.....24
Special Boards.....26
Changing Lives for almost 100 years.....27
Community Organizations & Services.....33-34
Community Charitable Organizations.....35
Where kids can unplug to connect.....37
Meade County Schools looking forward to 2022...40
Meade County School Info.....42-43
Powers Paper Plant.....48
Public Health Providers Directory.....56
Churches Directory.....52-54
Meade County Website Directory.....59

Table of Contents

ATTENTION PROPERTY OWNERS:
 Too many tenants to manage yourself?
 Call us to see how we can help!



Make an easy choice in a difficult market!

Call 270-980-9529 today!



PROPERTY MANAGEMENT LLC

138 Broadway Street, Suite B, Brandenburg, KY 40108
 Rentals • Property Management | www.270rent.com



EQUAL HOUSING
OPPORTUNITY

Welcome Hannah Meador, PT, DPT, to the HCH Therapy Team!



Iris Wiseman, PT, DPT (left)
and Hannah Meador, PT, DPT

The Harrison County Hospital Therapy Team welcomes **Hannah Meador, PT, DPT**. Hannah joins a diverse team of therapists who offer a variety of outpatient and inpatient rehabilitation services using a multidisciplinary approach. Our therapists are experienced in treating a variety of diagnoses to a wide range of patient

populations using state of the art treatment modalities and evidence-based strategies.

Learn more about Hannah and the Rehabilitation Services offered at Harrison County Hospital by visiting www.hchin.org/rehab or by calling **812-738-7888**.



An affiliate of
 NORTON HEALTHCARE

Where *Care*
Comes First

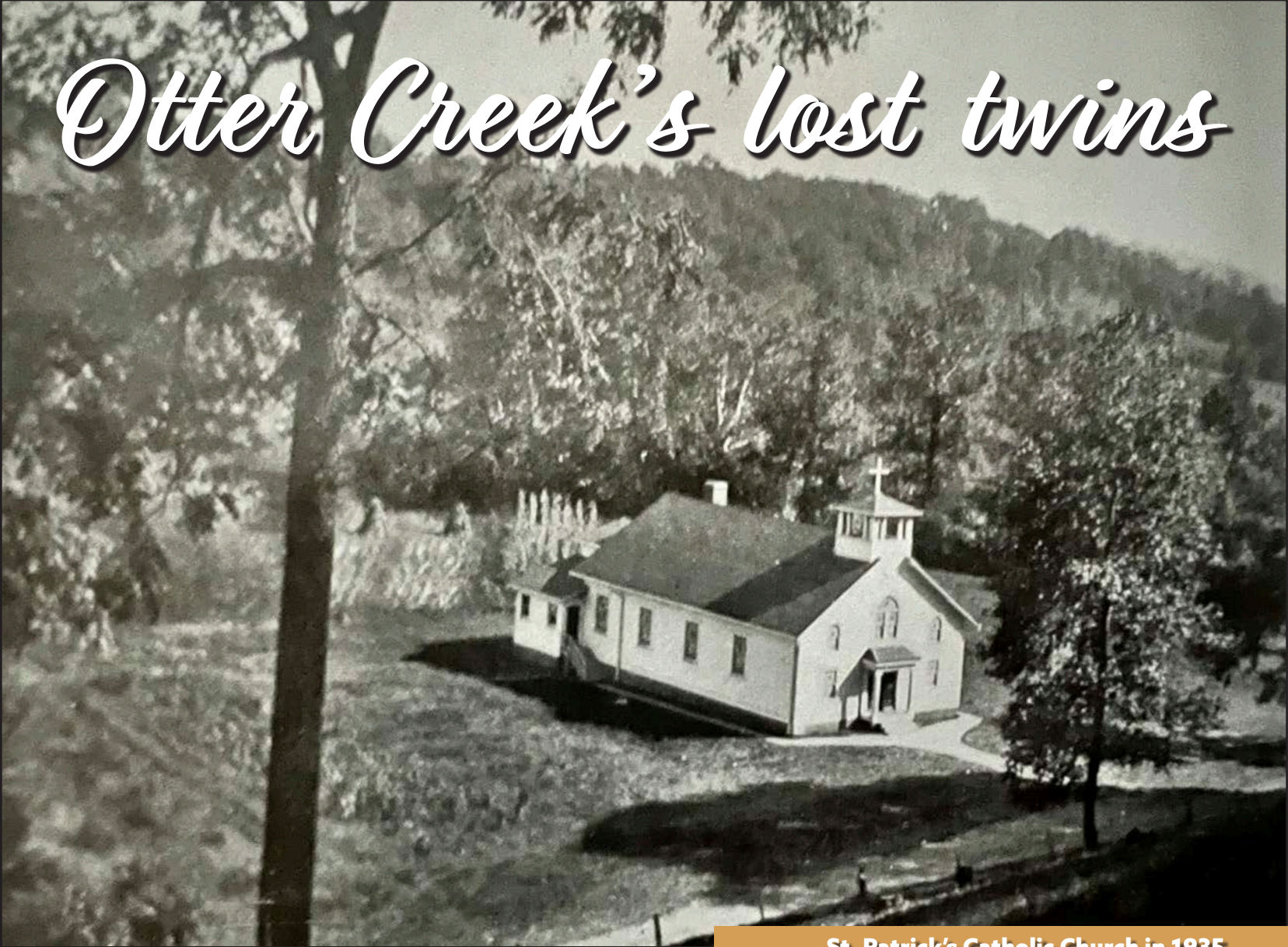
www.hchin.org

Sponsors Index

270 Rent.....	2
Air Evac.....	7
Allen's S&T Hardware.....	50
Baptist Health Hardin.....	55
Barr Automotive.....	59
Bim's Ready Mix & Trucking.....	58
Bluegrass Animal Care.....	58
Book Nook.....	39
Brandenburg Auto Clinic.....	52
Brandenburg Guns.....	8
Brandenburg Nursing and Rehab.....	53
Brandenburg Telephone/BBTel.....	34
Brandon Brinkley for Sheriff.....	26
Broadbent Wildlife Sanctuary.....	39
Bud's Pfeiffer Jewelers.....	26
Cathy Arnold for County Clerk.....	23
Chism Funeral Home.....	58
Chism Realty.....	18
Conrad's Music Service.....	43
Corvin's All Around Moving.....	36
Creature Comfort Inn.....	10
Doe Run Federal Credit Union.....	25
Doe Valley Association.....	back cover
Dutch Heritage.....	29
EXIT Realty Home Front.....	49
Farm Credit Mid America.....	6
Gabe Chapman for PVA.....	22
Greer Insurance.....	57
Hager Funeral Home.....	52
Harrison County Hospital.....	3
Irvington Gas.....	30
Knott's Supply.....	56
KORT Physical Therapy.....	57
Meade County Bank.....	inside front cover
Meade County Extension Office.....	29
Meade County Judge Leslie Stith.....	21
Meade County Messenger.....	61
Meade County Pediatrics.....	41
Meade County Public Library.....	46

Meade County Tourism.....	59
Meade Family Eye.....	42
Medley's HVAC.....	54
Midway Petroleum.....	60
Midway Rentals.....	60
Miguel's Restaurant.....	31
Momma Rob's Bakery.....	6
Monument Chemical.....	33
Nucor.....	32
Phillip Wimpee for Sheriff.....	39
Pike Electric.....	17
Pike Lawn & Garden.....	44
Planters Insurance.....	26
Rivertown Spirits/RTS.....	56
Robert's Family Farm.....	6
Ship N Print.....	35
Sidney Durham for County Attorney.....	22
Sinking Creek Lumber.....	35
The Cecilian Bank.....	inside back cover
Webb's Butcher Block.....	9

Otter Creek's lost twins



St. Patrick's Catholic Church in 1935.

by

CHAD HOBBS

In 1918, the winds of change were blowing into the eastern front of Meade County, but no one understood just how much change was coming. It was in that year that the United States Government first acquired land to create Camp Knox. The majority of the land was mainly in Hardin County with a small portion in Meade County. In doing so, the towns of Stithton, Pleasant View, Tip Top and Easy Gap in Hardin County became extinct. Well, except for Stithton. The residents just moved two miles to the southeast and started the town of New Stithton. This move would show just how

unprepared the communities were in understanding what the military's plans would be for Camp Knox.

In 1941, just 22 short years after the formation of Camp Knox, the installation would be called Fort Knox, and the government had returned for more of Hardin County and a much larger portion of Meade County to expand. New Stithton's move proved futile as these new land acquisitions would engulf it and render it permanently extinct.

Across the county line ran one of Meade County's most important creeks. Otter Creek was the only creek other than Doe Run Creek that was large enough to support mills, and as a result, played a big role in the development of this county from its earliest days.

Because of this, an important set of twin towns sprung up along the banks of the creek — Garnettsville and Grahampton. Despite enjoying a hay day in the 19th century, neither town would survive the 20th century. Fort Knox's expansion would wipe them both from the map, with only their graveyards left to mark that they ever existed.

Garnettsville

When you cross Otter Creek driving on HWY 1638 to Muldraugh, there is a paved one-lane road that climbs a slight hill on the left side of the highway that leads to the Garnettsville Cemetery. Prior to the Fort Knox land acquisition of 1941, the town was an important hub in Meade County. The town was founded in 1792 by James Garnett. A water-powered sawmill would make it a center of Meade County's saw milling industry. There was also a water powered gristmill. Garnett ran the mills and produced lumber and meal.



Grahampton in 1935 with old HWY 60 running through it and crossing Otter Creek.

The town that grew around it, Garnettsville, was originally in Hardin County. Then in 1824, it became part of Meade when the county was formed from parts of Hardin and Breckinridge. A school, churches, mercantile stores, saloons, and a stagecoach line ran through the town. Salem College was a renowned institution in

Proud to be Kentucky Proud.
Located here in Meade County.

125 KENNEDY RD, GUSTON, KY 40142 (270) 422-2361

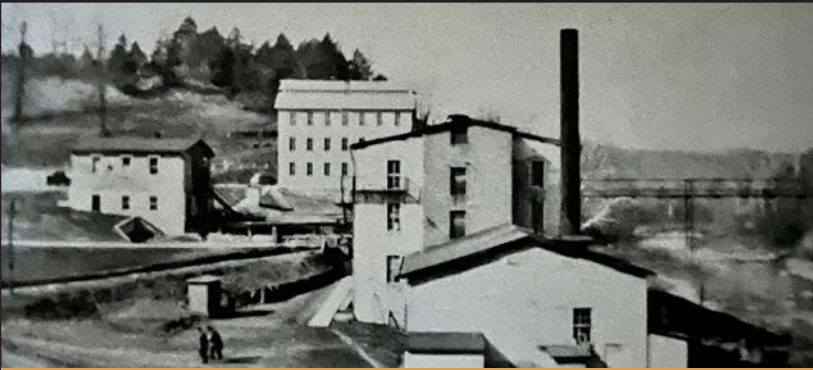
We give

FARMERS CREDIT

We help rural residents build,
farms grow and businesses expand.

HARDINSBURG OFFICE
1063 S Hwy 261
Hardinsburg, KY 40143
270-756-5268

800-444-FARM
Find us online at e-farmcredit.com.



The Grahampton textile mill with the second-generation bridge crossing Otter Creek in the background.

the town that was attended by students from all over Kentucky, Tennessee, and adjoining states.

Garnett would serve as one of the first justices of peace when Meade County was formed. The town thrived for many years, but in 1941, the town became extinct. There were approximately 300 people living in Garnettsville at that time.

One building did survive the Fort Knox expansion. A Methodist Church, made of stone taken from the hillsides of Otter Creek, was dismantled, and hauled to Muldraugh to be re-erected. The church still stands to

this day.

Grahampton

Just a few miles south, along Otter Creek's banks was the town of Grahampton. Like Garnettsville, nothing remains of the town except its cemetery. Locals still refer to the area, when traveling on US 60 as Grahampton Hill.

The town was named after Robert Graham. In 1835, Graham bought the land from David and Susannah



Grahampton in 1930 showing part of the textile mill and the third-generation bridge that crossed Otter Creek.



TWO MEMBERSHIPS COMBINED—FOR STRONGER PEACE OF MIND

In a medical emergency every second counts, especially when transporting patients who are far away from adequate medical treatment. No one knows that better than Air Evac Lifeteam.

WHEN YOU JOIN, YOU'RE COVERED

Air Evac Lifeteam is an AirMedCare Network participating provider—America's largest air medical membership network providing coverage across 320 locations in 38 states.

Expenses for emergency air medical transport can put stress on your finances. With an AMCN membership, you will have no out-of-pocket expenses if flown by an AMCN provider. Membership starts at just \$85 a year, with senior and multi-year discounts available.

ADD A FLY-U-HOME MEMBERSHIP FOR EVEN MORE PROTECTION

Fly-U-Home is a must must-have membership for those who travel more frequently. If you're hospitalized 150 nautical miles or more from home, AMCN Fly-U-Home can provide air medical transportation to your local hospital of choice. You don't have to drive or be stuck in a hospital far away away—and you'll have no out-of-pocket expenses in relation to your flight. Bundle an AMCN membership with Fly-U-Home to save!

Contact your local Membership Sales Manager to learn more or enroll today!

Annie Hynes | 270.617.4317 | anna.hynes@gmr.net | amcnrep.com/anna-hynes

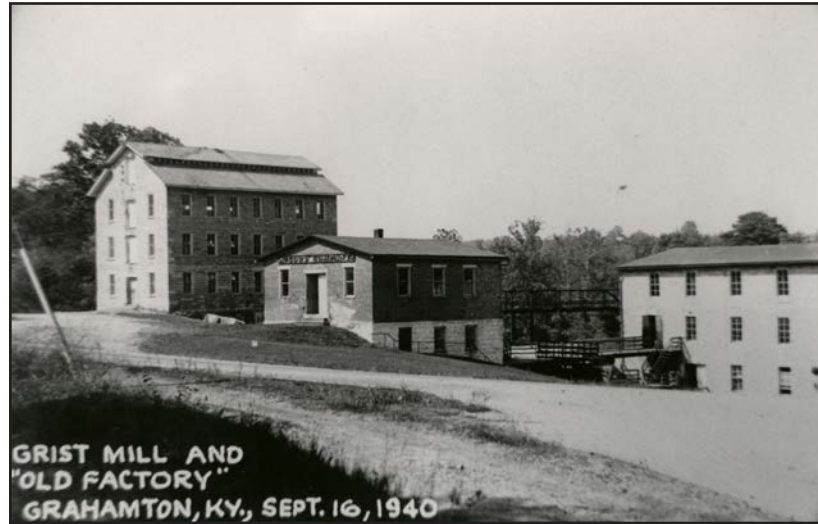


Brandenburg and moved his Louisville textile business there. The equipment was brought down the Ohio River by boat, then hauled by mule and ox cart along Otter Creek to Grahampton. Though the town was only a few miles down Otter Creek from Garnettsville, the two mill towns never competed as they produced totally different products.

The textile mill at Grahampton would thrive for over 100 years not just locally but nationally. During the Mexican War, much of the canvas for Army tents was produced there. The mill also produced jean cloth, grain bags, candle wicks, special cloths known as "Osanburg" and "Otter Creek Stripe" along with other textiles. The grist mill there never enjoyed the success of the textile mill and was eventually closed and used as storage for the textiles. The town itself had three churches—St. Patrick's Catholic Church, Trinity Episcopal Church, and the Grahampton Methodists Church. There were also stores and a two-room

schoolhouse located there.

Like Garnettsville, Grahampton would not survive the 1941 Fort Knox expansion. The businesses, houses and mill complex no longer stand, but traces of the old mill can still be found. At the bottom of Muldraugh hill on HWY 31W there is a monument for Fort Knox that is topped with an army tank. The stone base which the tank rests upon was built of stone taken from the Gra-



GRIST MILL AND "OLD FACTORY" GRAHAMPTON, KY, SEPT. 16, 1940



We buy, sell and trade firearms

Firearms • Ammo • Accessories

**BRANDENBURG
GUNS**

www.brandenburgguns.com

(270) 422-4867

636 BYPASS RD • BRANDENBURG, KY

hampton mill.

No one can argue that Fort Knox hasn't become a great asset to Meade County. The fact that it is the largest employer in the region alone has delivered prosperity to many families in our county through employment. Many soldiers and their families from all over the country have ultimately decided to stay in Meade County after their enlistment with the Army ended, and they have become great assets, neighbors, and contributors to our community. That "progress," however, came at a price. The eastern front of Meade County was forever changed, and for towns like the Otter Creek twins of Garnettsville and Grahampton, extinction was the price they paid.



Above: Men standing out the Casper Lane Store in Garnettsville in 1905.

Below: The Methodist church that was built in 1870 in Garnettsville was taken down and moved, stone by stone, to Muldraugh in 1928. It is the only surviving building from Garnettsville.



A group of Garnettsville citizens posed for a picture in 1890 at the Garnettsville stagecoach stop. The road ran from Louisville to Hardinsburg. Election banners hang on the wall behind them of the building that also served as a tavern.

Chad Hobbs is a Reporter for the Meade County Messenger. A Meade County native, he graduated from Meade County High School in 1997. Originally an English major at Bridgewater State University where he played football, he eventually transferred back to Kentucky and obtained a degree in Nursing. Hobbs resides with his family in Flaberty. He may be reached at: mcmreporter2@meadecountyky.com.



WEBB'S
The Spice is Right

We take deer every day of the year!

1910 Rhodelia Rd Payneville, KY 40157
(270) 496-4124 | webbsbutcherblock.com

TODAY'S CITIES WITHIN MEADE COUNTY

Brandenburg

Brandenburg remains the county seat for Meade County. On April 4, 1825, a county courthouse was donated by Solomon Brandenburg. As Brandenburg began to grow, Main Street sprung up from the river landing. The historic town center and century old courthouse stood as the town center until the Bypass Road was opened. There were several efforts launched by the Main Street Association to revive the area until 1974, when an F5 tornado destroyed most of the downtown area.

Ekron

Ekron was granted its name from Elizabeth Roberts, wife of Tom Roberts, the man who donated the land for the town in 1882. Soon after the city was chartered, the Louisville, Henderson and St. Louis Railroad was built through it. The Ekron Depot was established in 1884, assisting patrons along the six passenger trains and two freights that came through Ekron daily. In the early 1920s, a four room school was built for the students. The elementary school is still a fixture in the community and the trains still run through the town daily.

Flaherty

Thomas Boarman moved his family to settle near Big Spring and Bee Knob Hill. Other Roman Catholic families soon followed. When St. Martin of Tours was built in August of 1847, the town molded itself around the building, eventually encompassing it. In 1860, the original building was replaced by the brick structure that still stands today. In 1883, Michael Flaherty requested a post office, named St. Martin. The town received the post office, but through a clerical error, it was named Flaherty.

Guston

Guston is an unincorporated community that lies a few miles southwest of Brandenburg on KY 428, near its intersection with KY 710. Guston was named for area resident Gustavia "Gus" W. Richardson. A post office was established in the community in 1889. Guston is the home of Roberts Family Farm, which has been in their family for 100 years, and opened to the public in 2000. You can also find the Broadbent Wildlife Sanctuary in Guston, a 501(c)3 registered nonprofit organization, which is home to hundreds of sick, injured or misplaced wildlife.

Muldraugh

No one knows the origin of the word Muldraugh. The area was first homesteaded by a family of the name Muldrew. Muldraugh was a thriving railroad town. It was such a pivotal spot in Kentucky that Muldraugh served as the Central Post Office to Hardinsburg.



**Doggie
Daycare**

Dog Boarding

Cat Boarding

**Cuddle &
Playtime**

**YOUR PET'S HOME
AWAY FROM HOME**

**CREATURE COMFORT INN
BOARDING KENNEL**

**1910 Weldon Road
Brandenburg, KY (270) 422-1020**

UNINCORPORATED TOWNS WITHIN MEADE COUNTY

Andyville

Andyville is situated between Payneville and St. Theresa Church. Andyville is most well known for its general store, Stull's Country Store, which has been standing since 1972.

Battletown

Before Battletown was dubbed its current name, it was known as Staples. In 1885, Mack J. Bennett came up with the current name of Battletown after witnessing a fight in front of his general store. The little town has been put on the map because of its spooky history and less than ordinary stories.

Big Bend

Big Bend was established 45 years before Meade County was founded. John May bought 10,000 acres, which included the 3,000 that make up Big Bend, in 1787. The Booth family purchased the tip of Big Bend from the Virginia Land Company.

Big Spring

Big Spring is an unincorporated community in Breckinridge County, Meade County, and Hardin County. Big Spring takes its name from a spring which emerges near the town site, then sinks underground. A post office was established for the community in 1826.

Buck Grove

Supposedly named for a grove of oak trees there. Site of "one of the oldest Baptist churches in that section of Kentucky", which was built in 1857 according to Marie Coleman in an interview that took place on August 23, 1978. Allegedly, the church burned down and then was rebuilt. It is also said that Meade county's first court was organized at John Rush's home in Buck Grove.

Concordia

While most other towns have a story behind their name, Concordia's has been lost to the hands of time. Concordia was incorporated in 1869. A post office called Concordia was established in 1880, and remained in operation until it was discontinued in 1967. In 1937, the town was nearly destroyed in the Great Flood. Currently, there are no businesses located in Concordia; instead, the town boasts a huge park that is a hit for water sports enthusiasts, encompassing 14 acres, a boat ramp, picnic area, and camping options.

Doe Valley

Doe Valley is a 3,000-acre gated residential community nestled in the hills surrounding Doe Valley Lake. It is one of the most populous areas of the county and was carefully planned to provide property owners and their families with a variety of amenities and recreational opportunities such as golf, tennis, boating and swimming. Doe Valley has been developed in harmony with its natural surroundings, leaving much of the wooded land and surrounding countryside untouched.



Garnettsville

The town of Garnettsville, along with other towns, was consumed by the expansion of Fort Knox in 1942. Nothing remains of the town but the Garnettsville Cemetery. The history of the town is told through photographs, interview with former residents, newspaper articles and other documents. Listing of all those buried in the cemetery through 1974 are included – genealogical citations accompany many of the cemetery listings.

Garrett

The Rand McNally Atlas shows that Garrett had a population of 59 people in 1895 with a post office and no railroad service.

Lickskillet

“It’s just flat rocks there and they said it’s as flat as a lick skillet, but I don’t know if that’s right or not.” This is one of the long buried comments on how the unincorporated town of Lickskillet obtained its name.

Another version of how Lickskillet obtained its name according to one Juanita Padgett was that John Hunt Morgan’s camp stopped in this area in July of 1863 and that, “The raiders were not overburdened with food, so they ate what little they had and licked the skillets clean, wishing for more.” Afterwards, allegedly a community sprang up there in succeeding years and it was named Lickskillet.”

However, this is entirely a legend, not a properly documented fact, and cannot be conclusively proven with facts. At the time of her interview in 1985 Padgett stated she remembered Lickskillet when it was a community, before “the United States government came along in the 1930s and took acres and acres, of land in that area for Ft. Knox, wiping out, Garnettsville and isolating several small communities. Folks eventually moved away, and Lickskillet became, a memory.”

Midway

Midway is an unincorporated community in Meade County between Brandenburg and Irvington. It is at the crossroads of Old Richardson Landing Road and Highway 79, connecting Payneville and Ekron. Midway in Meade County should not be confused with another Midway in Kentucky, closer to Lexington. At one point, Midway was likely a major crossing hub for travelers to and from the area. Now it serves a passing point between Brandenburg and other Kentucky counties like Breckinridge and Ohio.

Payneville

In 1854, a man named Reuben Case purchased the land that is now known as Payneville and took to calling it Caseville. The town was then renamed to Payneville in honor of James M. Payne (1852-1933). On Oct. 21, 1871, the first school for Payneville was chartered. There is currently one elementary school in Payneville that serves children from kindergarten to sixth grade. It is a small community that lies a few miles northwest of Brandenburg on KY 144 at its intersection with KY 376. Located near here are the Payneville Petroglyphs, listed in the National Register of Historic Places. Payneville is also the home of family owned Webb’s Butcher Block where you can buy your meat, whether it be chicken or alligator, locally instead of going to the grocery store.

Rhodelia

Rhodelia was named by Elias Rhodes, who named the town with a portmanteau in honor of his daughter, Delia. The post office set up shop in 1888.

Rock Haven

Rock Haven is an unincorporated community in Meade County, in the U.S. state of Kentucky. A post

Meade County

County Seat:
Brandenburg

18 miles from
Corydon (I-64)

25 miles from
Elizabethtown (I-65)

45 miles from
Louisville

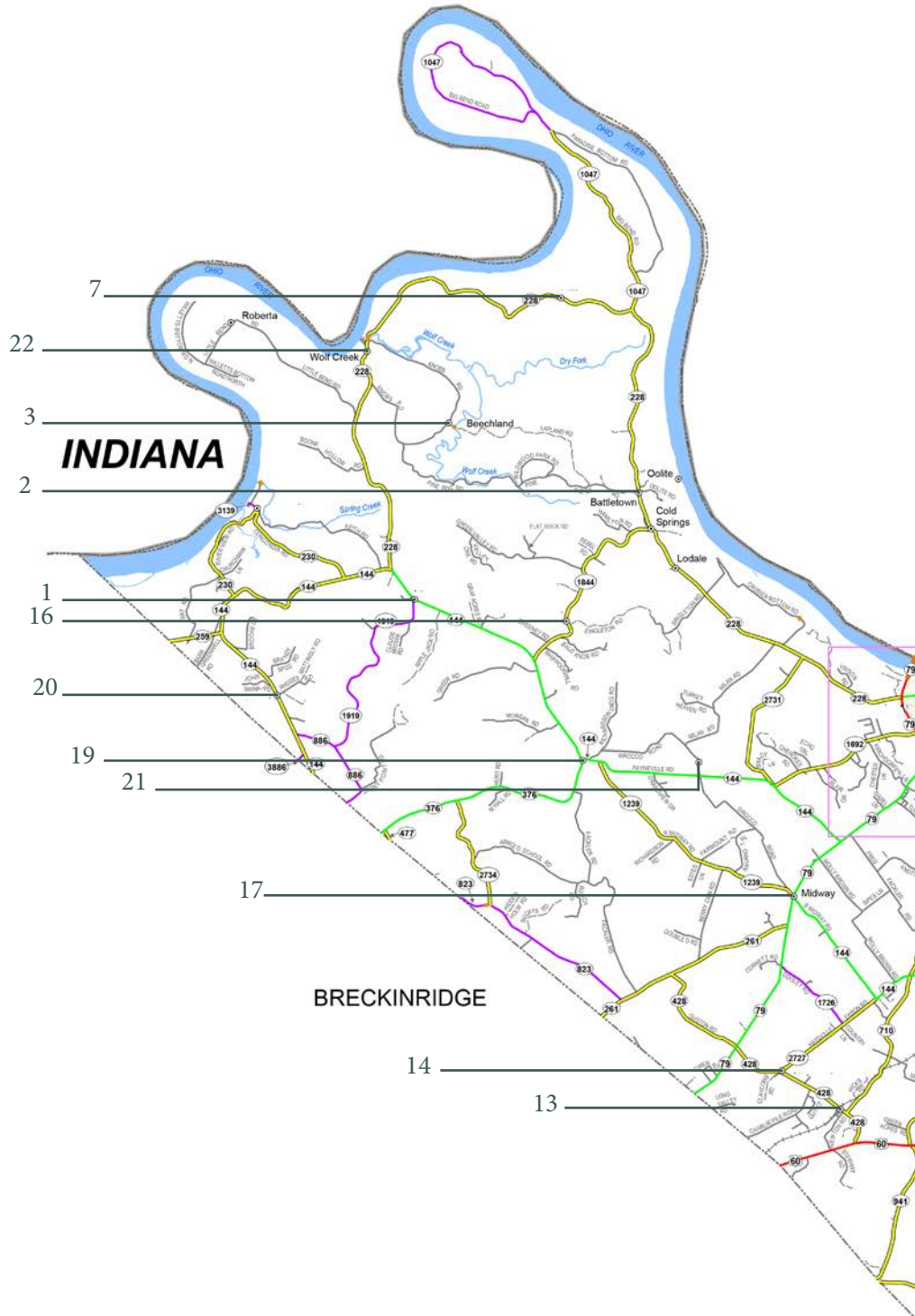
45 miles from
*Louisville
International Airport*

114 miles from
Lexington

114 miles from
Cincinnati, Ohio

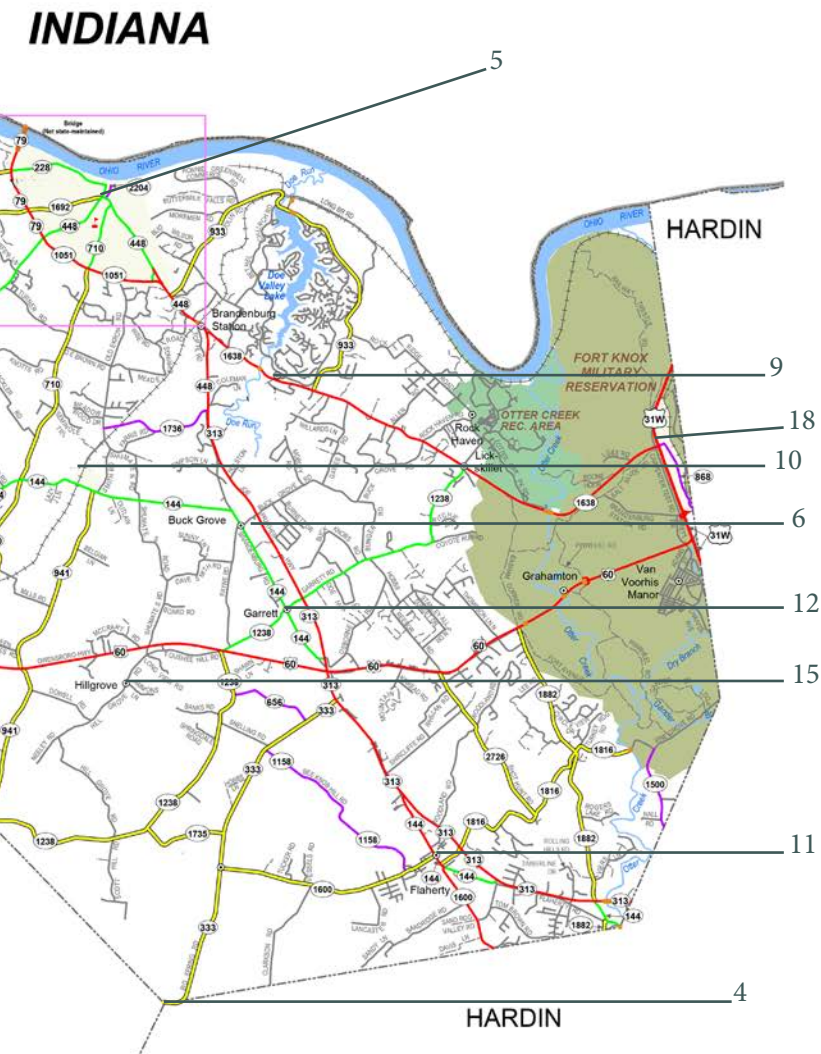
149 miles from
Indianapolis, Indiana

157 miles from
Nashville, Tennessee



Cities

- | | |
|----------------|----------------|
| 1. Andyville | 12. Garrett |
| 2. Battletown | 13. Guston |
| 3. Beechland | 14. Haysville |
| 4. Big Spring | 15. Hillgrove |
| 5. Brandenburg | 16. Liberty |
| 6. Buck Grove | 17. Midway |
| 7. Cedar Flat | 18. Muldraugh |
| 8. Concordia | 19. Payneville |
| 9. Doe Valley | 20. Rhodelia |
| 10. Ekron | 21. Sirocco |
| 11. Flaherty | 22. Wolf Creek |



office called Rock Haven was established in 1848, and remained in operation until 1956. The community most likely was named for nearby rock outcroppings.

Wolf Creek

Wolf Creek is a Meade county community on the Ohio River at the mouth of Wolf Creek about 15 miles northwest of Brandenburg. In the 19th century, it was an important river port and manufacturing town. The Wolf Creek post office opened in 1862 and closed in 1967.

MILITARY BASES

Fort Knox

Fort Knox is a United States Army installation in Kentucky, south of Louisville and north of Elizabethtown. It is adjacent to the United States Bullion Depository, which is used to house a large portion of the United States' official gold reserves. The 109,000 acre base covers parts of Bullitt, Hardin and Meade counties. It currently holds the Army Human Resources Center of Excellence, including the Army Human Resources Command. It is named in honor of Henry Knox, Chief of Artillery in the American Revolutionary War and the first United States Secretary of War.



Meade County Statistics

Population	30,003
Median Age	37.8
Median Household Income	\$56,603
High School Graduation Rate	95%

7th Best County for Outdoor Activities in Kentucky

14th Best County For the Best Public Schools in Kentucky

17th Best County For Families in Kentucky

OVERALL REPORT CARD:

Public Schools	A-
Housing	B+
Good For Families	B+
Jobs	A-
Cost of Living	B+
Outdoor Activities	B+
Crime and Safety	C-
Nightlife	B
Diversity	B-
Weather	B-
Health and Fitness	B-
Commute	C

- per niche.com & census.gov



NUCOR STILL ON TRACK FOR LATE 2022 COMPLETION

The view of the horizon from Lawrence Street in Brandenburg is beginning to change significantly.

by

SETH DUKES

Back in March of 2019, Meade County learned that Nucor, America's largest steel producer, would be building a \$1.7 billion steel plate mill facility on the banks of the Ohio River in Brandenburg. Since then, construction has begun, and the skeleton of the site has started to take shape.

Vice President and General Manager Johnny Jacobs says that, despite a worldwide pandemic complicating the year 2020, they're still on pace to have the facility up and operational by the end of 2022.

"As we get into 2022, we'll see a lot of equipment placement take place, and in the second half of 2022,

we'll start to see the commissioning of the facility, beginning with our melt shop and then, ultimately, carrying us through our rolling mill operations and out to our finished plate," Jacobs said.

Jacobs says his team has done a phenomenal job of working around the pandemic, and that they're fortunate no impacts have adversely affected their critical timeline. However, the pandemic did limit Nucor's visibility in the community, something Jacobs is hopeful they'll be able to reverse once normalcy returns.

"Over the last several months, we've had a few more of those outreach opportunities," he said. "We plan to continue that in the coming months and really

get out there and advertise the Nucor story and the opportunities here for careers.”

Nucor recently announced that a blast and prime line will be added to the Brandenburg plate mill. Jacobs says that they are extremely excited about what this addition will bring to the facility.

“It will support about 120,000 tons of our capacity off the line and will allow us to offer blast and prime capabilities to our customer base,” said Jacobs. “It will support key market segments like our Nation’s military, infrastructure, heavy equipment offshore wind and other energy products.”

Nucor currently has approximately 230 teammates on site, many of which live in the region. Hiring is currently underway, and Jacobs says it will continue through 2022.

“We’re onboarding about 20 to 30 new team members each month as we continue our ramp up to 400 teammates when the facility is up and operational,” he said.



Pike Electric
Wiring • Heating & Cooling • New Work & Repairs
3190 Payneville Road, Brandenburg, KY 40108
270-496-4504

**We service
all types of
furnaces and
air conditioners!**

**CALL TODAY
for service!**

HVAC License # M01660 • Electric License # CE4780

What part of the Nucor site looked like last year.





A view of the construction of Nucor's plate mill in Brandenburg from across the river in Indiana.

Chism Realty CO LLC

Residential | Land/Farm | Commercial

chismrealtyco.com

270-668-3247



Approximately 900 contractors are also working on site daily. Jacobs says they envision that number growing to more than 1,500 by the latter part of Q1.

Once Nucor's facility is up and operational, it will be responsible for approximately 5% of Nucor's total steel output across more than 300 operating facilities. An 2019 economic impact report projected that Nucor's total net annual economic impact on the state would be approximately 3,040 jobs and \$189 million in labor income. The report projected that Meade County would see an increase of 780 jobs and \$56 million in labor income.

Jacobs says that he and his teammates love being a part of Meade County, and they're hopeful that, as pandemic concerns ease, they'll be able to be more visible and participate in more community outreach efforts.



Seth Dukes is the Newsroom Coordinator for the Meade County Messenger and MCKY News. He graduated from Western Kentucky University in 2015 with a BA in English. He has been a journalist in five counties in western Kentucky and covered everything ranging from feature stories to breaking news. A native of Muhlenberg Co., Seth now resides in Brandenburg. He may be reached at mcmeditor@meadecountyky.com



A view of the Nucor construction from Buttermilk Falls.





Happy New Year

& greetings FROM the MEADE COUNTY JUDGE/EXECUTIVE

The Meade County Courthouse.

by
LESLIE STITH

As 2021 has come and gone but for many of us it will never be forgotten. We need to reflect on those that have lost family members and loved ones that have been affected by COVID-19 as we continue to battle this pandemic. We will continue to fight strong together as we are TEAM MEADE and we will stand together and work together as a team to get through any obstacles that might be in our way during the upcoming year.

Entering 2022, we will continue to see growth in Meade County. Nucor is on board and their goal is to be complete and running by the end of the year. We would like to welcome the addition of Eddie

Kane Steel this year. As for the County Government we have the following projects coming our way: construction of Meade County EMS Station 3 located in Payneville; Dispatch Expansion; with the help of Federal ARPA funds many miles of county water will be installed; and the grainary for the community will become more of a reality in 2022. The housing market never became a standstill in 2021 builders have continued to progress throughout the year which leads for a strong housing market and economic growth for our community in 2022.

In closing, it is an honor to serve you as your County Judge/Executive and along with Meade County

Fiscal Court we will continue to work on developing our community socially and economically. Together as a team we have a bright future ahead of us and we have an amazing community to live and work in. Please join me as we enjoy the journey together as TEAM MEADE!!!

Judge Stith speaks to County Road Department workers on "Stand Down for Safety Day" on December 13, 2021. Stith signed the Executive Order to create "Stand Down for Safety Day" in honor of Gene Hobbs, a County Road Department employee who was tragically killed in an on the job accident several years ago.



Leslie Stith

Meade County Judge Executive

Meade County Fiscal Court
516 Hillcrest Drive Suite 12
Brandenburg, KY 40108

Phone: 270-422-3967
Fax: 270-422-3262
judgeexecutive@meadeky.gov

WELCOME TO MEADE COUNTY

A GREAT PLACE
TO LIVE!

A GREAT PLACE
TO WORK!

LET'S KEEP

JUDGE EXECUTIVE LESLIE STITH

#TEAMMEADE

*Paid for by Leslie Stith for Judge Executive

CO. OFFICIALS

COUNTY OFFICIALS

Commonwealth Attorney

Rick Allen Hardin
270-287-0034

County Attorney

Jessica Brown-Roberts
270-422-2546

Judge Executive

Leslie Stith
519 Fairway Drive,
Brandenburg, Ky. 40108
270-422-3967

Meade County Circuit Court

Ellen F. Lindsey
270-422-4961

Meade County Clerk

Judy Jordan
270-422-2152

Meade County Sheriff

Phillip Wimpee
270-422-4937 or
emergency-24 hours, 911

Meade County Jailer

J. J. Scarborough
270-422-2546

Property Valuation Administrator

Rebecca Watts Richardson
270-422-2178

MAGISTRATES

District 1 (Muldraugh/ Grahamton)

Thomas J. Goddard
270-319-8843

District 2 (Weldon-Doe Run/Rock Haven-Doe Valley)

Donald Eli Dix JR.
270-422-3401

District 3 (Flaherty/Guston/Otter Creek)

Billy Sipes
270-668-8081

District 4 (Brandenburg West/ Ashcraft/ Brandenburg East)

Gary Chapman
270-422-4581

District 5 (Ekron/Buck Grove/ Garret)

Steve Wardrip
270-422-2366

District 6 (Wolf Creek/ Payneville/Battletown/ Sirocco-Midway)

Randall Hardesty
270-496-4241

IT'S TIME TO VOTE AGAIN IN MEADE COUNTY

*Ad paid for by Sidney Durham for County Attorney



VOTE FOR



IN 2022

★★★★★ VOTE ★★★★★

REPUBLICAN

Gabe Chapman

for Meade County PVA



A name you can trust.

PAID FOR BY GABE CHAPMAN

★★★★★ VOTE ★★★★★

BRANCHING OUT TO ★ MEADE COUNTY ★



“I have 23 years of experience, dedication, and knowledge. I’m qualified, honest, and would be proud to serve the citizens of Meade County. I am currently trained in all areas of the Clerk’s Office and I would continue the passport facility that is currently available in the County Clerk’s Office. I believe everyone should be treated equally regardless of their party affiliation. I humbly ask for your vote and support in the upcoming 2022 election.”



**Vote Cathy Arnold
in 2022 for
Meade County Clerk**



**ROOT FOR
SUCCESS!**

**Paid for by Cathy Arnold for Meade County Clerk*

CITY OFFICIALS & CITY HALLS

BRANDENBURG

Brandenburg City Officials

Mayor: Ronnie Joyner
City Clerk: Amy Haynes
Attorney for the city:
Racheal Brown

Brandenburg City Hall

P.O. Box 305,
Brandenburg, Ky 40108
270-422-4981
mayor@bbtel.com
www.brandenburgky.org

Water Works: 270-422-4981

City council persons

Bruce Fackler
Michael Kelly
Bradley Johnston
Bryan Claycomb
Bill Basham

Brandenburg City Council meets the 2nd Monday of each month at 7 p.m. at Brandenburg City Hall.

Board of Adjustments

John O'Bryan
John Proctor
Jeff Embrey

Planning and Zoning Board

Lee Klockow (*administrator*)
Harry Craycroft
Jerry Lancaster
James Morrison
James Jensen
Arrick Jones, Sr.

Brandenburg City Planning and Zoning meets the third Tuesday at 7 p.m. at Brandenburg City Hall.

EKRON

Ekron City Officials

Mayor: Gwynne Ison

MULDRAUGH

Muldraugh City Hall

202 Wendell St.
Muldraugh, KY 40155
502-942-2824
muldraugh@bbtel.com

Muldraugh City Officials

Mayor: Joseph Noon Sr.
City Clerk: Caroline Cline

City council persons

Curtis Kelley
Gary Scott
Karie Lykins
Kelly Zola
Judy Iden
Sam Iden

Planning and Zoning Commission

Karie Lykins (*chairman*)
Gary Scott
Yvonne Lee
Kelly Zola

Muldraugh Enforcement officer

Jim Heavrin

City council meets the second Monday of the month at 6:30 p.m. Planning and Zoning meets the third Thursday at 7 p.m. All meetings are at Muldraugh City Hall.

*"If these
United States can
be called a body,
then Kentucky
can be called
its heart."
— Jesse Stuart*



OFFICIALS CONTINUED

STATE

State Sen. Stephen Meredith

Capital Annex Room 228
Frankfort, Ky 40601
502-564-8100 Ext. 843
stephen.meredith@lrc.ky.gov

State Rep. Nancy Tate

702 Capitol Ave. Annex
Room 367C Frankfort Ky
40601
270-422-3704 or 502-564-8100
Nancy.Tate@lrc.ky.gov

FEDERAL

U.S. Sen. Mitch McConnell

317 Russell Senate Office
Building
Washington, DC 20510
202-224-2541
senator@mccconnell.senate.gov
www.mccconnell.senate.gov

U.S. Rep. Brett Guthrie

2434 Rayburn H.O.B.
Washington, DC 20515
202-225-3501
www.guthrie.house.gov

U.S. Sen. Rand Paul

600 Dr. MLK Jr.
Place Room 1072B
502-582-5341
senator@mccconnell.senate.gov
www.paul.senate.gov

*"Someone struggled
for your right to vote.
Use it."*

— Susan B. Anthony



A Small Credit Union Doing Big Things!

Low loan rates

Free checking

Investments



Doe Run

Federal Credit Union

www.doerunfcu.com

Serving Meade County since 1979

740 High Street
Brandenburg, KY
270-422-7745

SPECIAL BOARDS

Board of Health

270-422-3988

<http://lincolntrailhealth-department.com/meade-county>

Conservation

District Board

270-422-3183

Ethics Commission

<http://meadeky.com/meade-county-ethics-com-mision>

Extension Board

270-422-4958

<https://meade.ca.uky.edu>

Library Board

270-422-2094

www.meadereds.org

Industrial

Development Authority

270-422-5627

<http://mcbedky.org>



**Fair.
Honest.
Forward.**

ELECT 

 **BRANDON** 

BRINKLEY

SHERIFF

 **MEADE COUNTY**

*Ad paid for by Brandon Brinkley for Sheriff




**Adding
your own
personal touch
can make the
difference
between
mundane &
magical.**

**NOW OFFERING CUSTOM
JEWELRY DESIGN!**

**Bud's
Pfeiffer
Jewelers**

On the diamond corner
of Chestnut & Elm

109.5 N Elm St,
Corydon, IN 47112
(812) 225-5334
(812) 738-3181




**Insurance you can depend on
when you need it most!**

**PLANTERS CO-OP
INSURANCE COMPANY**

- SINCE 1904 -

Established in Breckinridge County
**517 S 1st Street
Irvington, KY 40146**

270.547.3921



Local Office Here
To Serve You!
Call Sharon at
270.547.8467

MEADE COUNTY EXTENSION OFFICE

2002

*Changing Lives for
Almost 100 Years!*

The front entrance of the Meade County Extension office.

by

JENNIFER BRIDGE

The Cooperative Extension system roots are deeply planted in our nation's history. Following the revolutionary war, farmers began meeting to share experiences to advance farming and food security through Agriculture clubs and societies. President Lincoln signed the first Morrill Act of 1862 which created land grant institutions in each state. The new law provided 30,000 acres of public land per each congressional leader from each state. The land was to be sold with proceeds to be used for creating and building a

Meade County Magazine

university focusing on Agriculture, Mechanic Arts, and Military instruction. In Kentucky, the University of Kentucky was formed, and agriculture research began. A second Morrill Act in 1890 provided public land with the same purpose for African Americans so they had the same opportunity without discrimination. Land grant institutions were the first public universities in our nation.

While important research was going on at the universities, it was difficult to get the information off campus and to the farm communities. Often, hands on demonstrations and trial plots were needed to convince farmers to adopt new practices. In Ohio, an

agent formed a corn club to work with youth to teach new recommendations since he couldn't get adults to adopt new practices. Once the farmers children started having higher crop yields after implementing the recommendations, the new practices were quickly adopted on the farm.

Congress passed the Smith Lever Act in 1914 which led to Agriculture and Home Demonstration Agents along with the 4-H program being added to the Cooperative Extension Service system, administered through land grant universities. The University of Kentucky and Kentucky State University are the only two land grant universities in our Commonwealth and share extension program areas. The purpose of the Cooperative Extension Service was and

still is, to bring university research and education to people throughout our Commonwealth in a non-formal setting.

Did you know the Cooperative Extension Service is a cooperative agreement between the United States Department of Agriculture, the University of Kentucky, and Meade County local government to provide researched based education and life changing programs to the county?

The history of the Meade County Extension Service started in 1929. Through a cooperative agreement between USDA, the University of Kentucky, and Meade County fiscal court, an office was established. Mr. Ray Hooper became the first agent in Meade County. As an Agriculture agent he worked closely



Left to right, front row: Alice Pile Kilpatrick (the first home economics extension agent), Ethel Bruner, Betty Woolfolk, Maggie Sherlock, Ina Rose Sipes, Mattie Secuskie, Viola Singleton. Middle row, left to right: Lora Bruington, Lois Hawksworth, Lucille Seymour, Vashti Miller, Evelyn Yates, Louise Dowell, Flora Wilson. Back row, left to right: Minnie Young, Frances Williams, Rosalie Ritchie, Minnie Lee Richardson, Allene Haynes.

with adults and youth to teach research-based information related to agriculture, especially with livestock and crop production. He also coordinated other programs of need in the county through the university such as food preservation, nutrition, home nursing, sewing and other essential skills for the household.

In 1948, a Home Demonstration agent (now called Family and Consumer Sciences) was hired for Meade County to teach advancements in food preservation and household quality. Miss Alice Pile was sent to the county as the first Home Demonstration agent, and she quickly formed extension homemaker groups who are still going strong today.

The 4-H program was formed nationally in 1902 and after passage of the Smith Lever Act was formally organized through the Cooperative Extension Service. Locally, Agriculture and Home Demonstration agents shared the role of the 4-H program. As the 4-H program grew, so did the need for a program agent.

In 1974 Joanne Jones became Meade County's first 4-H agent and the program has continued to grow, adapting to changes to meet the needs of youth in our county.

From the beginning of the program in the county, a portion of the county budget was allocated to fund the extension service and office space was in the county courthouse. In 1989, an extension tax was levied to provide adequate funding and expansion opportunities for the service. In 1991 the service moved out of the courthouse into a standalone facility on the Bypass where the VFW is currently located. After quickly outgrowing that facility, a new office was constructed on Old Ekron Road in 2002 and remains the current location. As the demand for services increases so has the need for additional space. A new addition has been added providing hands on and expanded learning opportunities.

Today, the service has over 50,000 contacts annu-



**The old way is not always the *best* way.
Contact us for the safe way.**



College of Agriculture,
Food and Environment
Cooperative Extension Service
Family & Consumer Sciences

1041 Old Ekron Rd
Brandenburg, KY 40108
(270) 422-4958



**Your one-stop shop
for quality furniture
& baked goods!**



Dutch Heritage
Furniture & Bakery

1300 OLD US 60 LOOP IRVINGTON, KY 40146 (270) 547-2999

Visit our website at dutchheritagefurniture.net

ally through educational programs, newsletters, online trainings, and person to person interaction. We are your trusted information source for nonbiased information. To learn more about our programs contact our office at 270-422-4958, email us at meade.Ext@uky.edu, visit our website at meade.ca.uky.edu or like our Facebook page Meade County Family and

Consumer Sciences, Meade County Agriculture and Natural Resources or Meade County 4H. We are here for you!

Jennifer Bridge is the Extension Agent for Family and Consumer Sciences Education – Meade County with the University of Kentucky, Cooperative Extension Service in the College of Agriculture, Food and Environment. She can be reached by phone at 270-422-4958 or by email at: jennifer.bridge@uky.edu



Front row, left to right: Sue Ellen Stull, Donna Curl, Teri King. Back row, left to right: Deana Reed, Andy Mills, Gina Markins, Forest Thompson, Jennifer Bridge.



**Clean, reliable
PROPANE**

**No matter
the season!**

Your neighbor for over 83 years!



**401 S. 1st Street
Irvington, Ky 40146
270-547-2455
www.irvingtongas.com**





MIGUEL'S



**201 Bypass Road
Brandenburg, KY 40108
(270) 422-3353**



BUILD A CAREER IN STEEL WHILE BUILDING THE GREEN ECONOMY

The green economy is being built on steel. At Nucor, that starts with a team that feels empowered to engage and innovate, while delivering the highest quality products and service for our customers. With a family-like culture that offers our teammates stability as well as freedom, it's easy to see why Nucor is named a Great Place To Work by Fortune.

Nucor Steel Brandenburg is currently hiring at our new state-of-the-art facility in Meade County. Apply today and join the best team in steel!



Discover why.
Visit nucor.com/careers

NUCOR[®]

COMMUNITY ORGANIZATIONS

Fraternal Order of Police
Otter Creek Lodge #67

Gamblers Anonymous
Lincoln Trail Behavioral Center 3909
South Wilson Rd.
Radcliff, KY 40160
270-351-9444

**Hosparus Health
of Central Kentucky**
800-686-9577

**KERAlot II Family
Resource Center**
270-422-7512

**Lincoln Trail Area
Agency on Aging**
800-264-0393

Lincoln Trail Career Center
233 Ring Rd., Suite 100
Elizabethtown, KY 42701
270-766-5115
kcc.ky.gov

**Lincoln Trail Antique
Power of the Past**
270-496-4268

Meade Activity Center (MAC)
493 Lawrence St.
Brandenburg, KY 40108
270-422-2227
www.meadeactivitycenter.org

**Meade County Civil War Heritage
Association**
www.brandenburgreenactment.com

Meade County Community Action
496 E. Broadway
Brandenburg, KY 40108
270-422-2545

**Meade County Extension
Homemakers**
270-422-4958

**Meade County
Senior Citizens Center**
270-945-3218

NAMI-Heartland Inc.
270-769-1304

**Springhaven Domestic
Violence Program**
502-827-1478
800-767-5838

**Meade County Area
Chamber of Commerce**
Box 483
Brandenburg, KY 40108
270-422-3626
chamber@bbtel.com
www.meadekychamber.org

Monument Chemical is proud to support

*Brandenburg,
Kentucky.*

We believe that businesses thrive in healthy, happy communities, and we enjoy doing our part to improve the wellness of the communities where we operate.



*From our Monument family to yours,
we are happy and honored to be your neighbor.*

2450 Olin Road, Brandenburg, KY 40108
www.monumentchemical.com

COMMUNITY SERVICES

Meade County Public Library
996 Old Ekron Rd.
Brandenburg, KY 40108
270-422-2094
www.meadereads.org

Meade County Animal Shelter
516 Hillcrest Dr.,
Brandenburg, KY 40108
270-422-2064

Meade County Solid Waste & Recycling
750 Ready Mix,
Brandenburg, KY 40108
270-422-2868
<http://meadeky.com/solid-waste>

Police
EMERGENCY CALL 911

Meade County Sheriff's Office
270-422-4937

Brandenburg Police Office
270-422-4981

Muldraugh Police Office
502-942-2824
Doe Valley Security
Manager Carl Frazier
270-422-3936

Emergency Dispatch Director
Jeremy Miller
270-422-4172

Volunteer Fire Departments

Battletown
Chief Rob Hubbard Jr.
270-497-4600

Ekron
Chief Philip Troutman
270-828-8338

Flaherty
Chief Alan Sipes
St. 50 (Flaherty)
270-828-2121

St. 51 (U.S. 60)
270-828-5555

Meade County Chief Terry Compton
Station 1 (Armory Place, Brandenburg)
270-422-4292

Station 2 (Doe Valley)
270-422-4608

Muldraugh Chief Daniel Dresel
502-942-2892

Payneville Chief Tim McMahan
270-496-4759

Rhodelia Chief Pat Barr
270-496-4759

Wolf Creek Chief Teddy Smith
270-497-4422



with
Superior Local Customer Service
and
One Local Company



270-422-2121

WWW.BBTEL.COM

CHARITABLE ORGANIZATIONS

**4-H Clubs and Affiliated
4-H Organizations**
1041 Old Ekron Rd.
Brandenburg, KY 40108
270-422-4958

Alcohol House
2254 Fairgrounds Rd.
Brandenburg, KY 40108
270-422-1050

**Brandenburg Chapter 499
Women of the Moose (WOTM)**
245 Main St.
Brandenburg, KY 40108
270-422-4814

**Brandenburg Moose Lodge
1177 Loyal Order of the Moose**
245 Main St.
Brandenburg, KY 40108
270-422-4814

**Daughters of the American Revolution
Ambrose Meador Chapter**
12 Howard Dr.
Brandenburg, KY 40108

**Ephraim Roseman
Foundation Inc.**
2025 Fred Fackler Rd.
Brandenburg, KY 40108

Harrison #122 Masonic Lodge
125 Broadway St.
Brandenburg, KY 40108
270-547-0728

**Meade County Habitat
for Humanity**
741 High St.
Brandenburg, KY 40108
270-422-5445
h4hmeadeco@bbtel.com

Haynes Cemetery Association
1346 Alex Willis Ln.
Guston, KY 40142

**International Association
Of Lions Clubs 104067**
1550 Fairground Rd.
Brandenburg, KY 40108

**The Knights of Columbus
St. Teresa Council #2282**
1200 High St.
Brandenburg, KY 40108

Meade County Angel Ministry
29 Doe Run Ekron Rd.
Brandenburg, KY 40108

**Meade County Golden Angel
Ministry**
Brandenburg, KY 40108
Linda Dee Ames at 619-838-9923
OR
Amy Boyer at 303-929-2238

**Ministerial Association Clothes
Closet & Food Pantry**
2320-5 By Pass Rd.
Brandenburg, KY 40108
270-422-2010

**The Macedonia Action Christian
Center Inc. (MACC)**
8900 Battletown Rd.
Battletown, KY 40104
270-497-4663

**The Meade County Cancer
Coalition (MCCC)**
270-945-6248

Military Order of the Cootie
520 Medley Dr.
Ekron, KY 40117

The Pets in Need Society
270-422-3838
petsinneedsociety.org

VFW Post 11404
770 Bypass Rd.
Brandenburg, KY 40108
270-422-5184

VFW Post 11404 Ladies Auxiliary
770 Bypass Rd.
Brandenburg, KY 40108
270-422-5184

*"Be the change you
want to see in the
world." – Mahatma*

Sinking Creek

LUMBER & HARDWARE



Doors • Windows • Garage doors • Vinyl siding
House packages • Barn packages • Eden pure heaters
Post frame buildings • Replacement windows
Treated lumber and posts • 40-year painted steel siding



REAL WORLD
WILDLIFE PRODUCTS
Wildlife Seeds and
Hunting Supplies
available



valspar
WALLS & FLOOR PAINT



Benthall Brothers, Inc.



Milwaukee
Cordless Tools



Everlast
Roofing, Inc.
OUR NAME SAYS IT ALL

Call us for all your roofing needs!

10443 E. Hwy 60, 3 miles west of Irvington
270-547-2900 • Fax 270-547-2903

Delivery in Meade and Breckinridge counties!

Mon.-Fri. 7:30 a.m.-5 p.m.; Sat. 7:30-noon EST
Closed Dec., Jan., Feb. on Saturdays






SIGN PRINTING

POSTERS & BANNERS

POST CARDS & INVITATIONS

VINYL DECALS & STICKERS

UPS, FEDEX, & DHL SHIPPING SERVICES

PROFESSIONAL PACKING SERVICES

270-422-SHIP

838 OLD EKRON ROAD • BRANDENBURG, KY 40108

WWW.SHIPNPRINTBBURG.COM



Corvin's IN TOWN
AND ALL AROUND
MOVING
ON SITE STORAGE

“WE MOVE YOU!”

We understand time is of the essence when buying or selling your home. We will move you in town or all around. We offer moving and packing services and on-site mobile storage units for all your real estate needs.



Now Featuring
Nationwide Moving

Delivery Fee: \$75.00*
Pick Up Fee: \$75.00*
Delivery fee, pickup fee, and 1st month's rent charge must be paid in advance. Loaded & uploading storage unit is offered.

*Delivery & Pick up fee applies to Hardin County. Call us at 270.352.0601 for rates outside of Hardin County

10' to 26' Storage Units
Monthly Rental Starting at only **\$150.00** per month or **\$9.00** per day

- In-House Packing Services
- Professional Movers
- On-site Storage

**NEED FURNITURE?
LET US HELP!**

and
furniture
OF RADCLIFF, KENTUCKY
270-352-0601

With a wide variety of new/used furniture and appliances, you'll always find a good deal! Check out our furniture selection before you miss out!



310 South Dixie Blvd.
Radcliff, Kentucky 40160
270.352.0601
www.corvinsofradcliff.com
corvinsmoving@gmail.com

YMCA CAMP PIOMINGO:

Where Kids Can Unplug to Connect

Smiles and fun are easy to be found at Camp Piomingo.

by

YMCA CAMP PIOMINGO

For more than 80 years, YMCA Camp Piomingo has welcomed youth from all walks of life to experience the magic of overnight camp. From the first moment campers arrive, they are greeted and enveloped into a safe, loving environment where they're encouraged to try new things, make lifelong friendships, spread their wings, and most of all—have fun!

“We love that children leave with memories that will last throughout their life. To turn off the electronics and engage in the world around them. I also love that they get to develop their independence.”

YMCA Camp Piomingo is just the place to Unplug to Connect! Now more than ever, kids need a tech-

free environment to experience nature, be physically active, and socialize.

- Connect with nature and LOWER STRESS by walking endless hiking trails, rock climbing and rap-



elling in the quarry, exploring caves, swimming in creeks, and breathing in plenty of fresh air!

- Connect with activities and **BOOST CONFIDENCE** while trying new things such as archery, swimming, high ropes, zip line, horseback riding and more!

- Connect with each other and **BUILD SELF-ESTEEM** while making friends, living in a cabin, singing songs together, participating in group activities, creating art, and sharing meals!

- Connect with new experiences and **INCREASE INDEPENDENCE** while spending time away from home and making choices during free time.

- Connect with other campers and **IMPROVE COMMUNICATIONS SKILLS**, such as letter writing, while enjoying real “face time” with other campers.

“My daughter comes home from Camp Piomingo with a heart full of joy, confidence, and self-respect. She always forms a bond with a camper or two that lasts throughout the years. She develops skills in clinics, and she develops a love for fellowship and nature.”

YMCA Camp Piomingo is accredited by the American Camp Association and follows their health, safety, and program standards. Well-trained staff are passionate about camp and are committed to ensuring your child’s safety is their top priority. More than



Fresh air and good company are a great way to relax.

75% of our staff are former campers themselves and are ready to make this an unforgettable summer.

Campers will learn the Y’s core values of **CARING, HONESTY, RESPECT, and RESPONSIBILITY** in a loving and inclusive space. YMCA Camp Piomingo is a safe space for kids to be themselves without fear of judgment or bullying.

“Camp gives my kiddo a boost of confidence every year. It’s a place he can truly be himself, and I appreciate that so much.”

Campers (ages 6-16) can choose between one, two or three week programs and are welcome to stay all summer. The Y is for everyone: ask about financial assistance. Visit ymcacamppiomingo.org for more information and to register for summer camp 2022!



Nature, friends and memories to last a lifetime.

**BROADBENT
WILDLIFE SANCTUARY**

www.Broadbentwildlife.org

100 Guston Bewleyville Rd
Guston, KY, KY 40142
(270) 547-4200

Broadbent Wildlife Sanctuary relies on donations from the public to continue to provide life-saving care to our precious wildlife. If you wish to donate, please remember that all donations, no matter how large or small, are needed and appreciated. Broadbent is a 501(c)3 charity, and all donations are tax-deductible. We do not receive government funding.

THANK YOU MEADE COUNTY

I love my job and am grateful for the opportunity you have given me to serve as Sheriff of Meade county.

I'm a Dad, husband, and Grandpa, still residing in Battletown, where I grew up with seven siblings, across the creek from a lot of cousins. Family flanked all sides. My Mom and Dad still live in the same house right down the road. A lot of it is still the same. Most of my brothers and sisters are still in Meade, along with a bunch of extended family. My heart is here. It always will be.

I'm an avid hunter, fisherman, and family man. I was Superintendent of a quarry for several years before becoming a Sheriff's Deputy. I continued to do both jobs for awhile, before transitioning into a full-time Meade County Deputy position.

It was then that I saw things that needed to be changed in our county. I really wanted to make a difference. I wanted to attack our drug epidemic by increasing our drug force, implementing community policing, and figuring out a way to help addicts in crisis. I wanted the community to have the opportunity to be involved. My passion for this county and wanting to keep our kids and families safe, led me to run for Sheriff.

A Sheriff has many duties, including tax collection, service to the courts, and law enforcement, all while being a peace-keeper. My deputies and I accomplish all of those things and more to the best of our abilities, while having incorporated the changes I wanted to see. I added more drug detectives. I started a community policing program, which includes town-hall meetings and neighborhood policing. I work with churches and county leaders to help provide resources for recovering addicts, while taking a hard line with drug dealers. I am not in any way, shape or form, part of a "good ol' boy" system. I'm in nobody's pockets. I treat everyone the same, regardless of their stature in the community.

All of the things I believed in during my first campaign, still hold true. I believe that TOGETHER we are making a difference. The Sheriff's office is not mine, it's ours. Our door is always open. I love the job you've entrusted me with. I am humbly asking once again, for your vote in May. We still have work to do. I will always believe in Meade county. I hope Meade County will always believe in me. Thank you!



Ad. paid for by Phillip Wimpee for Sheriff



I BELIEVE that we can better protect our children, by working with our schools, who are the frontline in safeguarding our kids, and giving them the additional tools they need to do the job.

I BELIEVE that drugs account for the MAJORITY of the problems in America, and **I BELIEVE** and with your continued help, we will keep standing in front of kids and families in Meade County to fight back against the ones who mean harm.

I BELIEVE that just because something has never been done, doesn't mean it **CAN'T** be done.

I BELIEVE that **TOGETHER**, we **ARE** making a difference in Meade County.

I BELIEVE in Meade County, and I am humbly asking for Meade County to keep believing in me as Meade County Sheriff.





Meade County Schools

LOOKING FORWARD TO SERVING IN 2022

by
MARK MARTIN

The Meade County School District is a system of over 5000 students whose academic offerings, extra-curricular activities, and employees reflect our belief in providing a quality educational experience for all students, preschool through grade 12. This past year has featured great accomplishments for our school district, even through the continued challenges associated with the Covid-19 pandemic. During the 2021-2022 school year, Meade County Schools has remained committed to serving our communities. Meade County students have continued to excel in all areas.

During the Summer of 2021, our Board of Edu-
Meade County Magazine

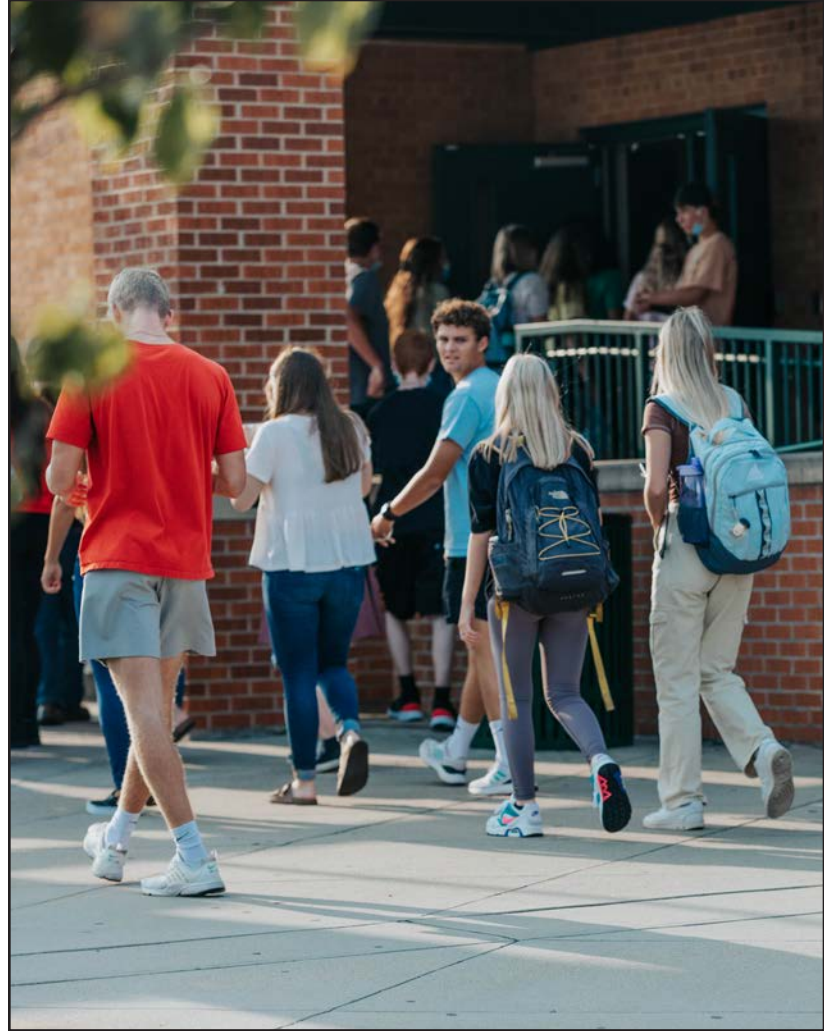
cation, adopted a new Strategic Plan to guide our District's work. This plan was developed using a process of deep inclusivity and voice for all stakeholders within the school community as well as external stakeholders across our community. The elements of our plan will position our school district and community to provide a learning environment that honors our traditions, while cultivating character, pursuing excellence, and delivering comprehensive experiences that prepare our students for a quality life.

The Meade County Schools youth basketball league for 5th and 6th grade girls and boys was initiated recently in November. This new opportunity has positioned students to learn about the game of basketball in a fun environment while representing their elementary school community with pride. Meade

County Schools will also initiate a new elementary afterschool music program later this semester for our 4th-6th grade students. Promoting extracurricular opportunities and after-school connections for our students is a goal of the Meade County Board of Education.

Meade County Schools will continue to strive to be the school district of choice for our students, parents and community. We are committed to our work and decisions being guided by continuous improvement, innovation, equitable access, and service.

As we progress through the third school year impacted by the COVID-19 pandemic, I celebrate the work of our team members. In March of 2020, we committed to educating our students through a balanced response to the uncharted waters the pandemic would bring. We will continue to navigate the remainder of the Covid-19 pandemic in a manner that is safe for students, employees, and all community



“The world is a book, and those who do not travel read only a page.”

Robert L. Kupper, M.D. & Staff

Meade County Pediatrics

**1010 Lawrence Street
Brandenburg, KY 40108
270-422-3400
Monday - Friday
8:00 am - 4:30 pm**

stakeholders, while focusing on quality class instruction and opportunities for our students.

My commitment to our community continues to be that our teams will work hard each day to ensure all students are prepared for a quality life. We will accomplish this by providing a balanced educational experience and being intentional in everything we offer to students. We will continue to invest in our students, cultivate our team, be intentional with our classrooms and finally, collaborate hand-in-hand with our community. Meade County Schools looks forward to serving in 2022.

Mark Martin is the Superintendent of Meade County Schools. Martin graduated from Western Kentucky University and spent 12 years as a special education teacher and administrator. He joined Meade County schools in 2014. He can be reached by phone at 270-422-5494.



SCHOOL BOARD MEMBERS

Steve Orr
District 1

Alison Allen
District 2

Bryan Honaker,
Chairperson
District 3

Dana Flaherty
District 4

Nathan Beavin
District 5

SCHOOL BOARD MEETINGS

Meade County Board of Education
1155 Old Ekron Rd.,
Brandenburg, KY 40108
270-422-7500

Meade County Board of Education holds regular monthly meetings on the second Tuesday of each month at 7:30 p.m. at 1155 Old Ekron Road, Brandenburg, Kentucky 40108. Regular meeting dates beginning posted for 2022 so far are:

January 11, 2022

February 8, 2022

March 8, 2022

April 12, 2022

May 10, 2022

June 14, 2022

Please note that the School Board may change meeting dates and times as needed.



Thorough Eye Exams are just the beginning...

GET BETTER VISION
For a brighter future!

Eye Care Services

- Comprehensive Eye Exams
- Pediatric Eye Exams
- Management of Ocular Diseases • Cataract Co-Management
- Emergencies (Pink/Red Eyes) • Dry Eye Treatment
- LASIK & Refractive Surgery Co-Management • InfantSEE®
- Sports and Specialty Eyewear Fitting



Dr. Mary Beth Emmick

Call to Schedule an Eye Exam & Visit Our Website
270-422-7766 | www.meadefamilyeye.com
2195 Brandenburg Rd, Brandenburg, KY 40108

MEADE COUNTY SCHOOLS

Barry Hahn Primary School

750 Broadway,
Brandenburg, KY 40108
270-422-7545

PRINCIPAL: Gloria Bertrand
<http://brandenburg.ky.mcp.schoolinsites.com>

David T. Wilson Elementary

1075 Old Ekron Rd.,
Brandenburg, KY 40108
270-422-7540

PRINCIPAL: Annette Fackler
<http://wilson.ky.mce.schoolinsites.com>

Ekron Elementary

2500 Haysville Rd.,
Ekron, KY 40117
270-422-7570

PRINCIPAL: Travis Scott
<http://ekron.ky.mce.schoolinsites.com>

Flaherty Elementary

2615 Flaherty Rd.,
Ekron, KY 40117
270-422-7565

PRINCIPAL: Kellianne Wilson
<http://flaherty.ky.mce.schoolinsites.com>

Flaherty Primary School

2635 Flaherty Rd.,
Ekron, KY 40117
270-422-7575

PRINCIPAL: Ryan Dixon
<http://flaherty.ky.mcp.schoolinsites.com>

Meade County High School

938 Old State Rd.,
Brandenburg, KY 40108
270-422-7515

PRINCIPAL: Janette Schmidt
<http://meade.ky.mch.schoolinsites.com>

Payneville Elementary

520 Rhodelia Rd.,
Payneville, KY 40157
270-422-7550

PRINCIPAL: Whitney Jenkins
<http://payneville.ky.mce.schoolinsites.com>

Stuart Pepper Middle School

1085 Old Ekron Rd.,
Brandenburg, KY 40108
270-422-7530

PRINCIPAL: David Phillips
<http://stuartpepper.ky.mcm.schoolinsites.com>



Your trusted music store since 1890.

CONRAD MUSIC SERVICE (800) 264-3408
220 N Elm St, Corydon, IN 47112

Now proudly serving over 100 schools in the Kentucky & Indiana area





**GET THE LATEST LAWN CARE TOOLS
FROM THE EXPERTS YOU TRUST!**



(270) 422-4646

M-F 8AM TO 6PM, SAT 8AM TO 2PM

1427 Highway 79 | Brandenburg, KY 40108

*WE SELL NEW GRAVELLY, STIHL, ARIENS, BRIGGS & STRATTON,
FERRIS, KAWASAKI ENGINES, KOHLER ENGINES AND CUB
CADET PRODUCTS IN ADDITION TO PROVIDING SERVICE AND
PARTS FOR MOST LAWN EQUIPMENT!*

SHEFFIELD FINANCING

Financing for Ariens, Gravely, And Cub Cadet

Get Pre-Approved Today!

www.pikelawnandgarden.com

OUT OF THIS...



...World

Geraldine and Chris Stith pose above a legion of troopers in their basement full of Star Wars figures.

by

SETH DUKES

A match made in heaven, or maybe even a match made in a galaxy far, far away? That's what I asked myself when I entered the basement of Chris and Geraldine Stith's home in Brandenburg. The entire space is filled – and I mean filled – with Star Wars toys and figures. Chris's collection, which he started at just 6 years old after seeing the first Star Wars movie, has reached massive proportions. The 3.75-inch figures make up the bulk of his collection, and he estimates that there are about 10,000 of them.

“As of right now, I pretty much have everything in this scale made,” Chris said.

He still buys them today, as they come out. He buys so many that he has a wholesale account with his favorite source, buying figures by the case.

Shelves, placed with just enough room between



Star Wars Figures arranged inside the Millennium Falcon in a famous scene from A New Hope.



**The Khetanna (Jabba's Sail Barge)
from Return of the Jedi.**

them to allow you to carefully walk, fill the approximately 1,000 square-foot basement. Figures fill every free inch of the shelves, often situated in reenactments of scenes from the movies. Other toys and collectibles fill the remaining space, including hanging on the walls.

Chris still has his original Luke Skywalker toy that he bought when he was a child.

Geraldine and Chris gave me, a fellow Star Wars fan, a tour and educated me on the nuances of the Star Wars collectible universe.

I couldn't help but comment that the two of them had remarkably unique and similar interests in extra-terrestrial endeavors. The reason I knew Geraldine was because I had interviewed her about her family's experience with the Kelly Green Men, or Hopkinsville Goblins.



- **Free Programs for All Ages**
- **Free Wifi & Library Cards**
- **Movies, Games, Music and MORE!**
- **Online Resources**

www.meadereads.org

270-422-2094

996 Old Ekron Rd. Brandenburg, KY 40108



Darth Vader commands an army of Storm Troopers.



Jabba smokes a hookah in his palace.

In 1955, a shootout took place between a family of farmers and what they called “little green men.” According to a newspaper clipping, at approximately 7:30 p.m., a “little green man” approached the Sutton house in Kelly, Ky in Christian County. The creature was described as being about 3 feet tall “with eyes like saucers and set about 6 inches apart, hands like claws and glowing all over.”

“He fled when they fired a shotgun, but returned later with several similar companions who clambered all over the roof and neighboring trees,” the clipping said.

This was a story that Geraldine didn’t hear from her father until she was eight years old. It was he and her other relatives that had been the family of farmers in the story. Though at first, it scared Geraldine, she has now embraced her family’s UFO tale, and even written books about it. She also has an Etsy shop, aliensandgoblins, where she sells her books, plushies, and even hard resin figures made by her brother based on what the Kelly Green Men might have looked like. An event is held annually on the third weekend in August in the community of Kelly, commemorating the alleged landing of the “little green men.” The event promises “earth-bound fun for the whole family.”

Though the collection belongs to Chris, Geraldine is a Star Wars fan herself.

“I have always liked Star Wars,” Geraldine said. “I went to see the first movie three times when it came out.”

The two had known each other for years, having worked together at the same factory in Princeton. Their paths collided again later in life, and they got married. They are also big horror movie fans, frequently going to conventions and meeting cast members from their favorite movies.

The two now reside in Brandenburg, but it’s fair to say that they’re out of this world.

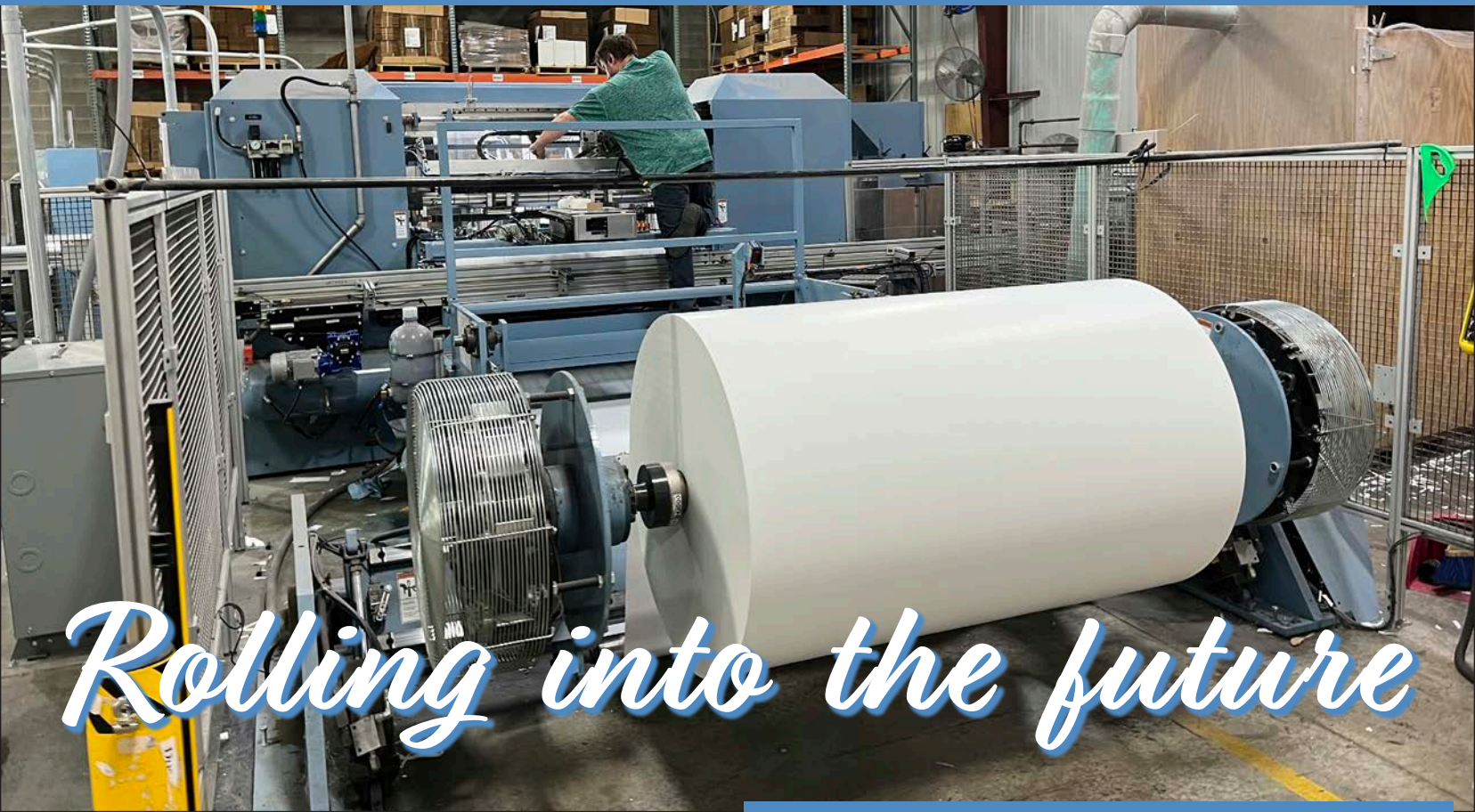


Custom-made zombie Storm Troopers.

Seth Dukes is the Newsroom Coordinator for the Meade County Messenger and MCKY News. He graduated from Western Kentucky University in 2015 with a BA in English. He has been a journalist in five counties in western Kentucky and covered everything ranging from feature stories to breaking news. A native of Muhlenberg Co., Seth now resides with his family in Brandenburg. He can be reached at mceditor@meadecountyky.com.



POWERS PAPER COMPANY:



Rolling into the future

Employee at PPC sets up his converter machine.

by
CHAD HOBBS

Back in 1989, Martin Powers could have never foreseen what Powers Paper Company (PPC) would become, but that is when the journey would begin building one of the most dominant companies in its field. Prior to that he had been finishing up college at Bellarmine University and helping his father run Power's Five Star Food Mart on US 60. While pursuing the woman, Tara, who would eventually become his wife, he stumbled on an old single slitting machine for paper collecting dust in the corner of a warehouse.

Powers would tune up the machine and put it back into service, which would lay the foundation for PPC.

Armed with his business background from school and the store, he began a one-man operation, running the machine, working as the salesman and delivering the product.

After outgrowing a small warehouse in Elizabethtown and facing a boom in the city that made finding workers difficult, Martin and Tara made the decision to move the business back to where his roots were in Meade County.

"Being from here, from the farm, I said I'm moving back to Meade County," Powers said. "Half my employees were from Meade County anyways, and I was tired of driving to E-town."

So, in 1996, PPC opened a new, 20,000 square foot facility in the new Brandenburg Industrial Park across

from the middle school. A lot has changed from those early days, however.

At first, the company was supplying paper products to OEM's (original equipment manufacturers) in the automotive sector such as Ford Motor Company. Back then, robots weren't painting cars; men and women were. Martin says he realized that there was an even bigger market in the body shop trade. There were only so many OEM's around the country, but body shops were everywhere. Soon, the company wasn't just supplying paper products for automotive paint jobs but other products that go along with the paper—paint stirring sticks, paint cans, plastic, and body stands just to name a few.

3M was the major company in the field and PPC took them head on. Despite 3M's huge multinational footprint, Powers used it against them and began to outcompete them using customer service and the small-town values that he holds so dear. Unlike with

3M, the customers weren't just a number to PPC, and their business model began to quickly overtake 3M's share of the market. In fact, 8 out of every 10 cars that are painted today are covered by PPC products.

After about 10 to 15, though, Powers says he realized they had to start diversifying outside of automotive. Anti-lock brakes and back alarms/cameras, though great inventions he says, were having serious effects on decreasing fender benders which meant less cars were getting body work done.

As a result, the company began to start diversifying into paper converting and other things, such as cash register rolls and void fill papers. Since COVID, they have really begun ramping up doing stuff for the building industry again—products for applications such as masking off windows and floor paper for drywallers. He also says that the rise of Amazon and online purchases has greatly increased the need for packaging paper as well. Many companies' focus on the environment has

How Real Estate Gets Real!

Call us today!

270-422-7945

520 Broadway Street Suite #3, Brandenburg, KY



also led them to shy more and more away from bubble wrap and styrofoam, choosing to use paper instead.

This diversification would lead to three separate expansions of PPC between 1999 and 2014, increasing the Brandenburg facility to 68,000 sq. ft. It would also steadily increase the workforce to about 60 employees.

To better serve the west coast, the company acquired two manufacturing facilities in Vancouver, WA that also added sheeted products to their line. With that acquisition, PPC now sells products to all 50 states and other countries such as Mexico, Canada, and New Zealand.

“We’re looking to grow as a company. The company is expanding,” Powers said. “We are perfectly centralized in the eastern United States. Within six hours, I can serve 80 percent of the population in the eastern US. That’s what’s helping us, and as transportation is becoming a big cost and a big factor, that’s going to help us in our growth.

To that end, PPC is currently wrapping up its fourth expansion. This new wing which will be bulk warehouse storage will free up room in other parts of the facility to add new machinery. Powers estimates the expansion to be about a \$3-4 million dollar reinvestment in the company, and it will allow them to add at least 10 new positions at their Brandenburg headquarters. Like so many businesses right now, it’s been difficult to find people to fill the positions. Supply issues, especially with paper shortages, have also hindered the company. PPC brings in paper from three different countries—Germany, Korea and the thermal paper stock used for cash register receipts was only made by one company in the US, and they were recently bought out by a Malaysian company.

“Business is good, but supply chain issues and finding help are the limiting factors right now,” Powers explained. “We’re looking for people in qualified maintenance positions and skilled labor with these

**IN BUSINESS
SINCE 1942.**

**ALLEN'S
S&T
HARDWARE**

Come in today!

We have hardware, lumber, doors, windows, siding, BP shingles, insulation, laminate flooring, commodes, etc.

**344 E Broadway, Brandenburg, KY 40108
(270) 422-2824**

Martin Powers directs one of his workers to move a roll of paper to be converted into smaller rolls.



new machines we are installing.”

Powers says the company has a long history of offering tuition reimbursement to employees, especially if they want to go somewhere like ECTC and go into a trade. He added that they have great respect for the employees who have joined the team for the long haul, but unlike many companies, he doesn't mind having employees that come work for a while until they are ready to move on to whatever they are going to school for.

“We are planning on adding more equipment—reinvesting in ourselves. We are not going away,” Powers said. “My second generation is in my business—my daughter and two of my son-in-laws all work here.”

Martin says he jokes with Tara sometimes about “Did you ever think we would make a living off rolling paper?” Considering they already roll enough paper

in one day in Brandenburg to more than wrap around the world and ship out a million rolls a month of just cash register rolls, not considering the whole plethora of products they offer from floor coverings to specialty paper for Boeing to use when painting jumbo jets, it looks like it's safe to say that the Powers Paper Company is set up to roll right into the future.

Chad Hobbs is a Reporter for the Meade County Messenger and MCKY News. A Meade County native, he graduated from Meade County High School in 1997. Originally an English major at Bridgewater State University where he played football, he eventually transferred back to Kentucky and obtained a degree in Nursing. Hobbs resides in Flaherty with his family. He may be reached at: mcmreporter2@meadecountyky.com.



Martin Powers stands with Brian Love, Drew Sanders and Dana Vanover, in the shell of what is now the completed new bulk storage edition at PPC Brandenburg.



CHURCHES

Bethel United Methodist Church
120 Bethel Church Rd.
Brandenburg, KY 40108
270-422-4229

Big Spring Corners United Methodist Church
6341 Big Spring Rd.
Vine Grove, KY 40175
270-828-4343

Blue River Island Baptist Church
595 Big Bend Rd.
Battletown, KY 40104
270-497-4877

Brandenburg Church of Christ
612 Brandenburg Rd.
Brandenburg, KY 40108
270-422-3878

Brandenburg Church of God
1 Howard Dr.
Brandenburg, KY 40108
270-422-5488

Brandenburg United Methodist Church
215 Broadway St.
Brandenburg, KY 40108
270-422-2810

Buck Grove Baptist Church
255 Buck Grove Rd.
Ekron, KY 40117
270-828-2717

Calvary Independent Baptist Church
3770 Old Mill Rd.
Brandenburg, KY 40108
270-828-3553

Cedar Grove Bible Methodist Church
600 Old Mill Rd.
Brandenburg, KY 40108
270-422-2901

Church of God of the Mountain Assembly
2246 Old State Rd.
Brandenburg, KY 40108

Church of Jesus Christ of Latter Day Saints
1412 Old Ekron Rd.
Brandenburg, KY 40108
270-422-3656

Cold Spring Baptist Church
7997 Battletown Rd.
Battletown, KY 40104
270-497-4500

Community Baptist Church
3770 Old Mill Rd.
Brandenburg, KY 40108
270-828-6500

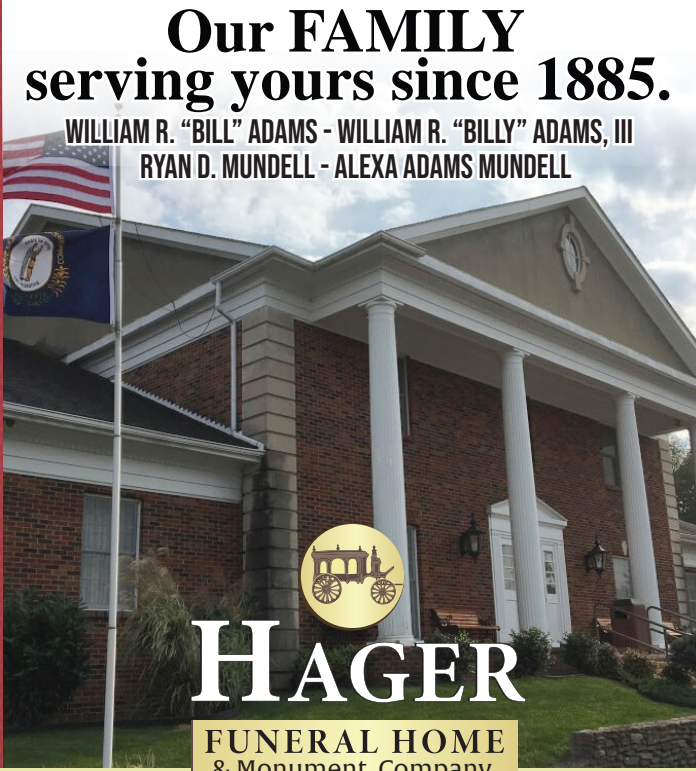
Ekron Baptist Church
2775 Haysville Rd.
Ekron, KY 40117
270-828-3454

First Baptist Church
149 Lawrence St.
Brandenburg, KY 40108
270-422-3355

First Church of God
10885 Hwy 60 West
Guston, KY 40142

Full Gospel Church of God
303 Smith Rd.
Ekron, KY 40117
270-828-8107

Our FAMILY serving yours since 1885.
WILLIAM R. "BILL" ADAMS - WILLIAM R. "BILLY" ADAMS, III
RYAN D. MUNDELL - ALEXA ADAMS MUNDELL



HAGER
FUNERAL HOME
& Monument Company

633 Bland Street | Brandenburg, KY 40108
Tel: 1-270-422-2132 | Fax: 1-270-422-2236
www.hagerfuneralhome.com

Expert Service From People You Know And Trust!

BRANDENBURG AUTO CLINIC LLP

270-422-4600 270-422-1600



- Master and certified ASE technicians
- Factory GM and Ford training • Dealership quality at affordable pricing.

- ✓ Diagnostics ✓ Diesel service
- ✓ All major brand tires ✓ Fuel injection cleaning
- ✓ Radiator and transmission flushes.
- ✓ Commercial Tire Services on & off site.
- ✓ Free alignment check with 4 tire purchase!

KELLY TIRES BFGoodrich UNIROVAL MICHELIN BRIDGESTONE
Firestone HERCULES TIRES Motorcraft ACDelco KOOL

1919 Armory Place,
Brandenburg, Ky.
Mon. - Fri. 8 a.m. - 5 p.m.; Sat. 8 a.m. - noon
www.brandenburgautoclinic.com

 "like" us on facebook

CHURCHES

CHURCHES CONTD.

Gospel Fellowship
1794 Rhodelia Rd.
Payneville, KY 40108
270-496-4311

Gospel of Peace
482 E. Broadway
Brandenburg, KY 40108
812-267-4503

Grace Awakening
1794 Rhodelia Rd.
Payneville, KY 40108
270-828-4673

Grace Baptist Church
7691 US-60
Ekron, KY 40117
270-828-2333

Grace Freewill Baptist Church
13490 Rineyville Rd.
Vine Grove, KY 40175
270-828-3120

Guston Baptist Church
838 Guston Rd.
Guston, KY 40142
270-319-2245

Guston Missionary Baptist Church
14110 Hwy 60
Guston, KY 40142

Heartland Christian Center
124 Ditto Ln.
Vine Grove, KY
270-877-5683

Higher Encounter Ministries
5280 Old Mill Rd.
Brandenburg, KY 40108
270-828-5443

Hill Grove Baptist Church
55 Ammons Ln.
Guston, KY 40142
270-828-3155

Hill Grove Church of Christ
1110 Foushee Hill Rd.
Guston, KY 40142
270-828-2110

Hill Grove Church of God of Prophecy
4005 Shumate Rd.
Ekron, KY 40117

Holy Trinity Episcopal Church
319 Oakland Rd.
Brandenburg, KY 40108

Journey Church
515 Bypass Rd.
Brandenburg, KY 40108
270-422-2020

Payneville Community Church
1275 Fackler Rd.
Webster, KY 40176
270-497-4511

Radiant Church
1400 Old State Rd.
Brandenburg, KY 40108
270-422-2810
info@radiantchurchky.com
radiantchurchky.com

Raymond Baptist Church
7955 Hwy 77
Webster, KY 40176
270-877-7242

Revelation Missionary Baptist Church
617 E. Main
Vine Grove, KY 40175
270-877-0770



Getting the
right care is
important.

We specialize
in skilled
nursing care,
rehabilitation
care, short and
long term care,
and hospice care.

Get the care you
deserve.

814 Old Ekron Road, Brandenburg, KY 40108 • 270-551-3900

CHURCHES

CHURCHES CONTD.

Rock Haven Baptist Church

4444 Old Mill Road Hwy 1638
Brandenburg, KY
270-828-2555
rkhvn@mw.twcbc.com

Rough River Baptist Church

Highway 259 S.
Payneville, KY 40108

Salem Baptist Church

5286 Old State Rd.
Brandenburg, KY 40108
270-422-1399

St. John the Apostle Catholic Church

515 Broadway
Brandenburg, KY 40108
270-422-2196

St. Martin of Tours Catholic Church

440 St Martin Rd.
Vine Grove, KY
270-828-2552

St. Mary Magdalen of Pazzi

110 KY-376
Payneville, KY 40157
270-496-4333

St. Theresa of Avila

9245 Rhodelia Rd.
Payneville, KY 40157
270-496-4362

Tabernacle of Worship

1900 KY-79
Brandenburg, KY 40108
270-422-7188

Valley View Baptist Church

501 Valley View Dr.
Vine Grove, KY 40175
270-877-2150
info@valleyview-ky.org
www.vvbc.church

Weldon Christian Church

1595 Christian Church Rd.
Brandenburg, KY 40108
270-422-5947

Wolf Creek Baptist Church

2791 Wolf Creek Rd.
Battletown, KY 40104
270-497-4248

Zion Grove Church

7050 Brandenburg Rd.
Ekron, KY 40117
270-828-2700



**Make a New Year's Resolution
to stay warm this winter with**



MEDLEY'S
270-422-4281

Heating • Air Conditioning • Plumbing

OVER 25 YEARS OF SERVICE

**1737 FRED FACKLER ROAD,
BRANDENBURG, KY, 40108**



YOUR LIFE REVOLVES AROUND FAMILY. OUR HEART CARE REVOLVES AROUND YOU.

MORE PEOPLE CHOOSE BAPTIST HEALTH FOR THEIR HEARTS. And you can be confident, too, that our skilled team will bring you advanced cardiac technology and treatments. But there's more to caring for patients with heart disease than just technical expertise. Baptist Health Hardin puts you at the center of everything we do. That means delivering care that focuses on your unique needs, your comfort and peace of mind as we help you get back to the things your life revolves around. This is heart care centered on you. Learn more at [BaptistHealth.com/HeartCare](https://www.BaptistHealth.com/HeartCare).

Corbin | Floyd | Hardin | La Grange | Lexington | Louisville | Madisonville | Paducah | Richmond



[BaptistHealth.com](https://www.BaptistHealth.com)



BAPTIST HEALTH[®]

HEART CARE

PUBLIC HEALTH PROVIDERS

PUBLIC HEALTH

Meade County Community Health Center, 520 Hillcrest Dr.
Brandenburg, KY 40108
Clinic Services 270-422-3988
Environmental Services
270-422-5919

Community Health Clinic
1113 Woodland Dr.
Elizabethtown, Ky 42701
270-763-9589
www.thecommunityhealthclinic.com

HOSPITALS

Baptist Health Hardin
913 N Dixie Ave.
Elizabethtown, KY 42701
270-706-1212
www.baptisthealth.com

Breckinridge Memorial Hospital
1011 Old Hwy 60
Hardinsburg, KY 40143
270-756-7000
www.mybreckhealth.org

Harrison County Hospital
1141 Hospital Dr. N W
Corydon, IN 47112
812-738-4251
<http://hchin.org>

MEADE COUNTY EMS

Station 1
530 Hillcrest Dr.
Brandenburg, KY 40108
270-422-5131

Station 2
27 Emergency Dr.
Vine Grove, KY 40175
270-828-8593

Station 3
5326 Payneville Rd.
Payneville, KY 40157
270-496-4703



Good Drinks for Good Moments

R T S

RIVER-TOWN-SPIRITS
155 BY PASS RD,
BRANDENBURG, KY 40108
(270) 422-2177



Knott's Supply is the place for all your hardware needs!

COMPLETE INVENTORY:

**LUMBER - TRIM - DOORS - WINDOWS
DRYWALL SUPPLIES - INSULATION**

FREE DELIVERY on most orders

Everything for the do-it-yourselfer or contractor

KNOTT'S SUPPLY, INC.
11070 Rhodelia Road, Rhodelia, Ky. 40161
270-496-4358 • 270- 547-4358

UTILITIES

WATER/SEWER

Brandenburg Water Works
737 High St.
Brandenburg, KY 40108
270-422-4981

Meade County Water District
1003 Armory Place
Brandenburg, KY 40108
270-422-5006
meadecountywater.com

TELEPHONE

Brandenburg Telephone Company
200 Telco Dr.
Brandenburg, KY 40108
270-422-2121
home.bbtl.com

ELECTRICITY/GAS

Meade County RECC
1351 Hwy 79
Brandenburg, KY 40108
270-422-2162
www.mcrecc.com

LG&E
820 W Broadway
Louisville, KY 40202
502-589-1444
lge-ku.com

Irvington Gas
P.O. Box 55
Irvington, KY 40146
270-547-2455

TRASH
Republic Waste Management Services
270-234-9278
<https://www.republicservices.com>



**GREER
INSURANCE**

270-422-5100

1110 High St • Brandenburg, KY 40108

**Serving Meade County needs for
30 years
with local insurance that
you can count on.**

KENTUCKY ORTHOPEDIC REHAB TEAM
KORT
The Best In Rehab.
815 Hillcrest Drive, Suite C
Brandenburg, KY 40108
270-422-3366

**We partner with you to heal, relieve pain and get
back to the things that are important to you.**



Animal Care Center
Bluegrass
Brandenburg

CALL TODAY!
(270) 422-3395
www.bgaccbrandenburg.com



Our wellness visits come with big, happy SMILES

We recommend regular wellness exams for the same reason your physician and dentist recommend them – if you can detect a problem in its early stages, it's more likely to be treated and resolved with less expense, less difficulty and better success!

Located at: 455 A By Pass Rd, Brandenburg, KY 40108



Respect. Honor. Remember.

CHISM FAMILY FUNERAL HOME

769 Highland Ave (270) 877-2245
Vine Grove, KY 40175



You always get on-time delivery and the convenience of us being there for you.

Bim's Ready Mix & Trucking
120 Shamrock Rd
Brandenburg, KY 40108 **270-422-7744**

MEADE COUNTY ONLINE

meadecountyky.com

Keep up to date on all of Meade County's news, events and more with the Meade County Messenger's official website. Regular news articles are free, however, an online subscription is required to see e-editions, special sections and archives of the paper.

meadeky.com

This is the hub for all information pertaining to the local county government including: local government office listings, tourism information, and events on the community calendar.

visitmeadecounty.org

The Meade County Tourism's website, which has the history of the county, a list activities, and an interactive visitors map!

meadekychamber.org

The Meade County Area Chamber of Commerce website includes a membership directory, updated calendar of events, and a list of the current officers and board members.

meadehistory.org

The Meade County History Museum website includes information about upcoming history programs, photos of the artifacts housed in the museum, and updated hours of operation.

meadecountyclerk.com

The Meade County Clerk's website gives viewers access to records, motor vehicle registration, and voter registration, and local election information.

lincolntrailhealth department.com

There you can find info about health programs, health inspection information, and various statistic and research reports.

ltadd.org

The Lincoln Trail Area Development District site covers Meade County and surrounding areas. View information on local economic development, zip code listings, and aging and disability resources for the are.



You take pride in your ride,
We take pride in our work.



Barr automotive
Auto & Diesel Repair

3340 Bypass Rd.
Brandenburg, KY
barrautomotive@bbtel.com
270-422-7442



MEADE COUNTY



www.visitmeadecounty.org
On the River but Not Out of the Way

Your Connection for...

- Lewis & Clark Trail
- Mountain Biking
- Ghosts & Outdoors
- *And much more!*



Meade County
TOURISM

79 Broadway St., Brandenburg, Kentucky 40108 • 270-422-3626

Now Available on 



MIDWAY RENTS LLC

OPEN FOR BUSINESS!



Equipment Rental Available!
 Skid Steers, Excavators, Trenchers, Tillers, Power Seeders & more!
Daily, Weekly, & Weekend Rates Available!

FILL UP WITH MIDWAY PETROLEUM FUEL & OIL



Midway Petroleum offers bulk fuel delivery options for farm & construction company fuel



Fuel tank lease and purchase options available. We deliver directly to your farm, business or construction site.

Whether you're running in to town, or need a fuel delivery straight to site we can help you with all your fuel and oil needs.

midway@keystops.com

CALL NOW! 270-422-2992 5140 Highway 79 • Brandenburg, KY 40108

YOUR ONE STOP NEWS SPOT!

The Meade County Messenger has been a strongly supported weekly newspaper in Meade County since 1882. For 140 years we have planted deep roots in the community, and plan to continue to provide Meade Countians with the most accurate and up-to-date happenings and news. In 2022 the Meade County Messenger, and its affiliate MCKY News, will continue to create more multi-themed fascinating magazines while expanding into multimedia news. Stay tuned for all the traditional and new ventures we have in store to share with Meade County!

You can contact us at:

270-422-2155

138 Broadway St, Suite A, Brandenburg, KY 40108

www.meadecountyky.com

Or email our General Manager at: mcmsales2@meadecountyky.com



Real Places, Real Faces
Real Banking

The Cecilian Bank aims to be community-based, community-minded and alive in the best interests of the communities in which we serve. It is because of this commitment, we have worked hard to understand and serve the banking needs of our local communities for over 118 years. From business checking to personal checking, savings to lending, and everything in between, our knowledgeable and personal bankers are real people who understand what you need, when you need it.



The Cecilian Bank



The Cecilian Bank



BRANDENBURG

302 By-Pass Road
Brandenburg, KY 40108
P: (270) 422-2265

Get on the ball and eat at the 19th Hole!

Enjoy delicious food
conveniently located in Doe Valley!



Open to the public!

f **doevalley19**



**Call ahead and carry out
or stay and enjoy
the scenery!**

270-422-3959