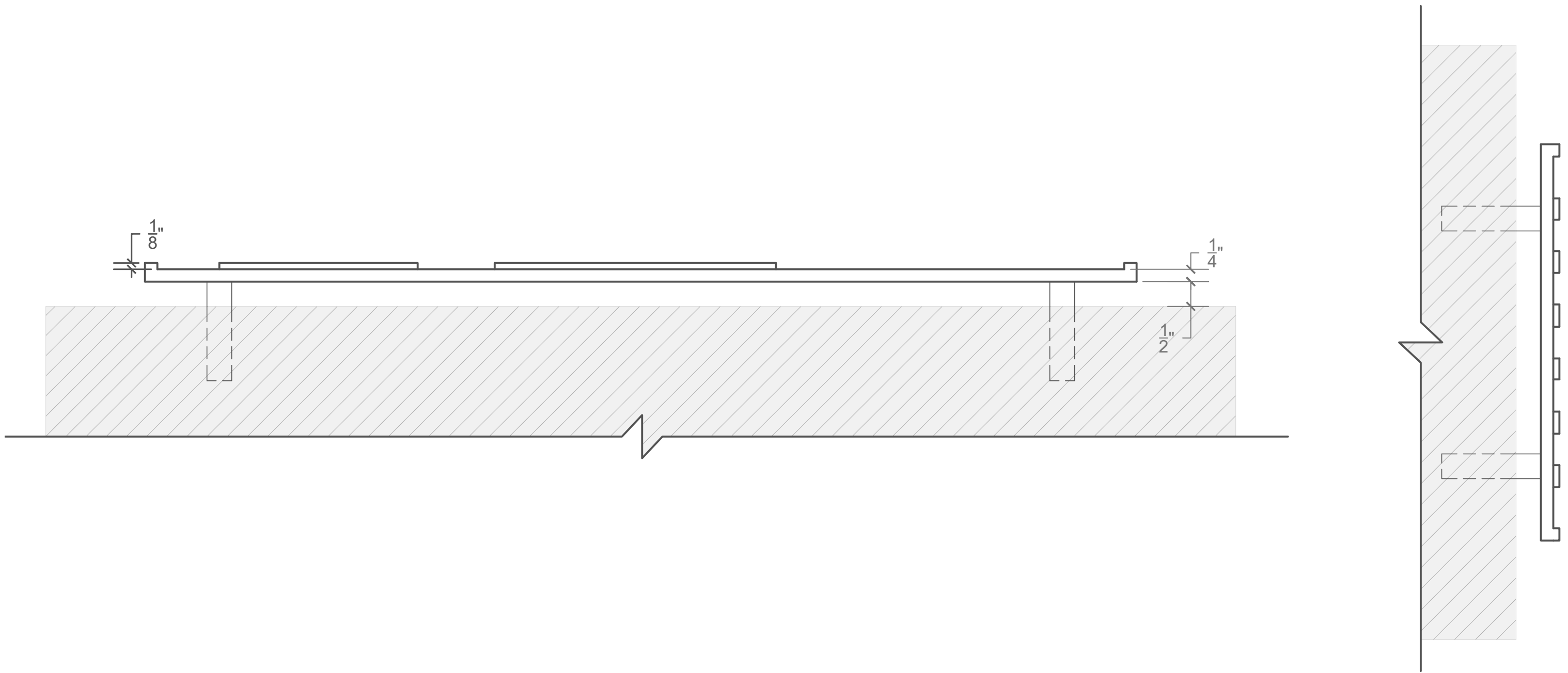


PLAQUE SIZE ON BLOCK ELEVATION - SCALE: 6" = 1'-0"



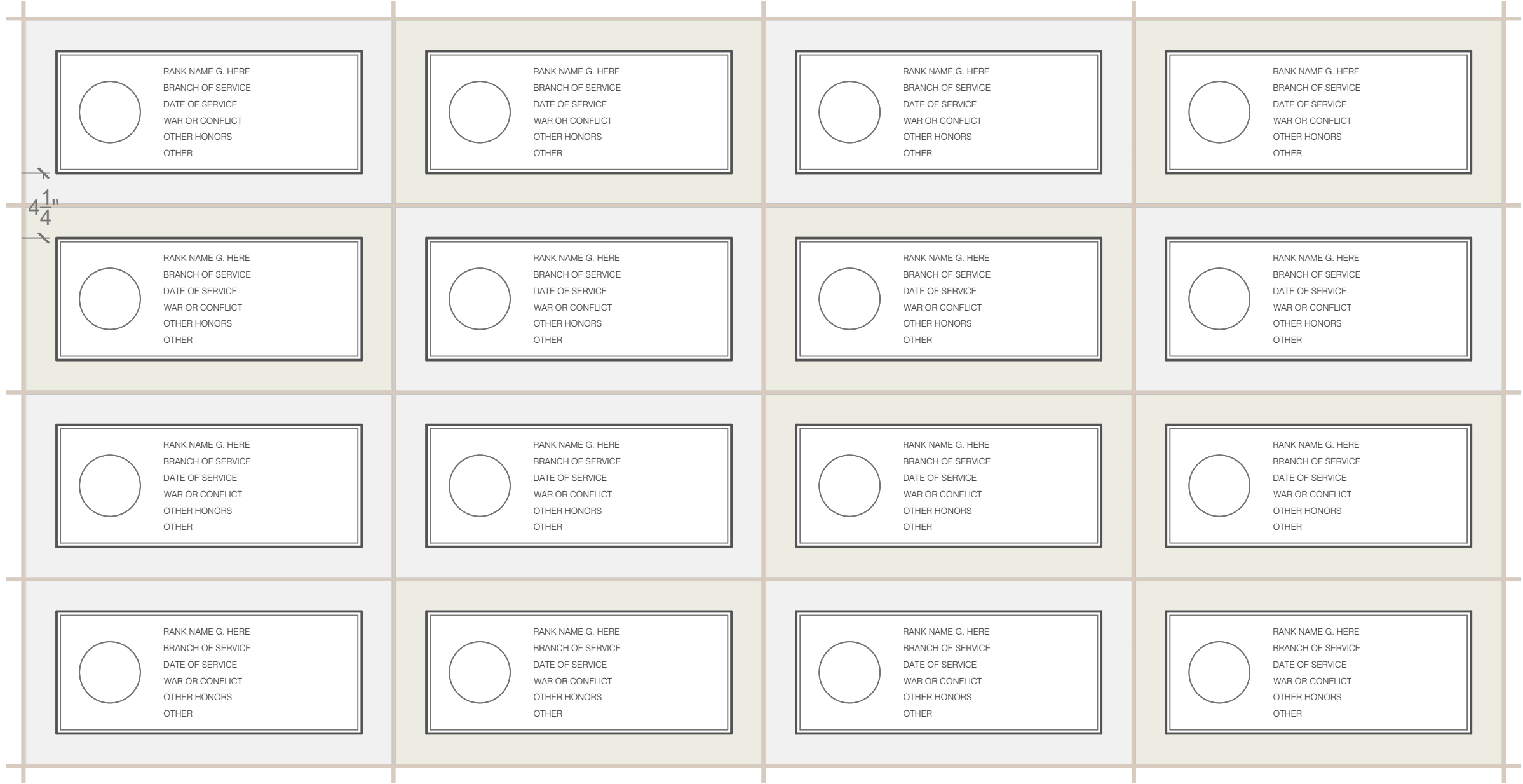


PLAQUE SIZE ON BLOCK SECTION - SCALE: 6" = 1'-0"

VETERANS WALL



PIVOT NORTH  
architecture



PLAQUE ARRANGEMENT - SCALE: 1-1/2" = 1'-0"

VETERANS WALL



WALL RENDERING

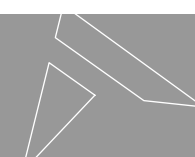
# VETERANS WALL





BRONZE PLAQUE PRECEDENTS

VETERANS WALL



PIVOT NORTH  
architecture