

DESTINATION

FREE - Take one!

Southern Idaho

THE OFFICIAL 2025 SOUTHERN IDAHO VISITOR GUIDE

Mini-Cassia
Chamber of Commerce
Grow With Us

STAY • EAT • SHOP • EXPLORE • CONNECT

Acequia • Albion • Almo • Burley • Declo • Elba • Heyburn • Malta • Minidoka • Oakley • Paul • Rupert

www.minicassiachamber.com

Our **Community's** Choice for Connecting One Another

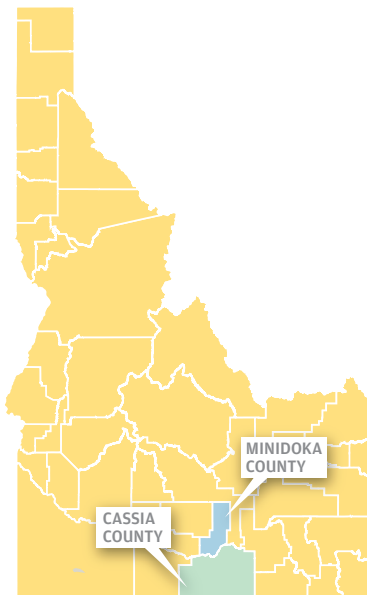


Connecting Residents. **Moving Businesses Forward.**

BURLEY
(208) 878-7151
1458 Overland Ave

RUPERT
(208) 436-7151
507 G Street

TWIN FALLS
(208) 933-7151
308 Shoshone St. E.



Experience DESTINATION *Southern* **IDAHO** MINI-CASSIA REGION

FROM THE
MINI-CASSIA CHAMBER OF COMMERCE

Welcome

From the Mini-Cassia Chamber of Commerce, welcome!
For those of us who live here, this is our playground,
our home.... but we are more than happy to share it
with YOU!

From the sheer majesty of the mountains, to the breathtaking
sunrises & sunsets, to the “magic” of the mighty Snake River – we
simply love it here. We hope you do too!

The Mini-Cassia area is comprised of 2 counties. Among them
sit 12 towns, each unique to what they contribute to this area. From
our deep roots in agriculture stemmed by generations of history
to our amazing tourism & recreation experiences, we continue to
grow & thrive.

Thank you for making Southern Idaho
& especially the Mini-Cassia area – your
destination!

Penne Y. Main

Penne Y. Main
President & CEO
Mini-Cassia Chamber of Commerce



EXECUTIVE BOARD OF DIRECTORS 2025

ANDREW GIBBY
CHAIRMAN

The Gibby Group
andrew@gibbygroup.com

TRISHA MOULTRIE
1ST VICE CHAIR

United Electric Co-op Inc.
tmoultrie@uec.coop

AMY DURFEE
2ND VICE CHAIR

D.L. Evans Bank/Rupert
adurfee@dlevans.com

HEIDI SMITH
PAST CHAIR

Impact Athletic
heidi@impactathletic.com

BOARD OF DIRECTORS 2025

BROCK BUTTARS

Burley Soft Water
buttarsbrock@gmail.com

BRICE BECK

Butte Irrigation
buttebeck@pmt.org

TY CAHOON

Performix Nutrition Systems
Ty.cahoon@performixnutrition.com

DINA ERLING

Lee Family Broadcasting
dinasvoice@gmail.com

TAMMY HANKS

Minidoka Memorial Hospital
thanks@minidokamemorial.com

JULI JAIME

Project Mutual Telephone
jj Jaime@pmt.coop

KAMBREE WATSON

Koyle's Classic Construction
Kcc.kambree.watson@gmail.com

JESSIE WILLIAMS

Boys & Girls Club
jwilliams@bgcmv.com

DAVE WESTFALL - FINANCIAL ADVISOR

Westfall & Westfall CPA's
wwtax@westfallcpa.com

MINI-CASSIA CHAMBER OF COMMERCE STAFF

PENNE Y. MAIN
PRESIDENT & CEO

president@minicassiachamber.com

MEGAN REYNOLDS

ADMINISTRATIVE ASSISTANT
MEMBER SUPPORT

membership@minicassiachamber.com

AMELIA LUSK

ADMINISTRATIVE ASSISTANT
FRONT OFFICE & VISITOR CENTER
Info@minicassiachamber.com

**PUBLISHED BY: TIMES-NEWS,
MAGICVALLEY.COM, THE VOICE,
AMPLIFIED DIGITAL AGENCY**

In cooperation with the
Mini-Cassia Chamber of Commerce

Publisher: Matt Sandberg
Project Manager: Debi Perkins
Executive Editor: Mychel Matthews
Project Art Design: Lee Design Center

CONTENTS

LEARN ABOUT RUPERT & MINIDOKA COUNTY	6-7
LEARN ABOUT BURLEY & CASSIA COUNTY	8-9
ECONOMY AND AGRICULTURE	10
DEEP ROOTS – MINIDOKA, CASSIA & OAKLEY HISTORICAL MUSEUMS	11-12
SUMMER RECREATION	13 & 16
MINI-CASSIA MAP	14-15
WINTER RECREATION	17
CASSIA & MINIDOKA COUNTY LABOR FORCE	18-21



Mt. Harrison
Fire Lookout
PHOTO COURTESY
OF TIMES-NEWS

ECONOMIC GROWTH	22-23
CALENDAR OF LOCAL EVENTS	24-30
HOW TO BE A CHAMBER MEMBER	31
MINI-CASSIA CHAMBER MEMBER BUSINESS DIRECTORY	32-42




**Over 30 Years
of Great Service
& HAPPY
Customers!**

**Outside seating during
the summer months**

Famous Fresh Idaho Fries

**Order To Go on our App!
Available on the
App Store and Google Play**

Dine-In or Take-Out

On the Burley/Paul Highway
208-679-3887

New Location:

**Stevo's Bar and Grill
in Kimberly**
208-421-1517

The Mini-Cassia area, encompassing Minidoka and Cassia Counties in south-central Idaho, offers a blend of natural beauty, agricultural richness, and small-town charm. Here are a few top picks for visiting or relocating.

1. OUTDOOR RECREATION

- Many lakes and the river offer great fishing, boating, kayaking, and birdwatching experiences.
- City of Rocks National Reserve: A renowned destination for rock climbing, hiking, and camping.
- Pomerelle Mountain Resort: Offers skiing and snowboarding in winter, and scenic chairlift rides or mountain biking in summer.
- Minidoka National Wildlife Refuge: Ideal for nature lovers and photographers.

2. SMALL-TOWN LIVING WITH A STRONG COMMUNITY FEEL

- Friendly communities with a slower pace of life and a family-oriented atmosphere.
- Active civic engagement and local events like county fairs, parades, and farmers markets.

3. AFFORDABLE COST OF LIVING

- Lower home prices and property taxes compared to larger metro areas.
- Attractive to retirees, young families, and remote workers looking for more space and affordability.

4. AGRICULTURAL ECONOMY AND JOB OPPORTUNITIES

- Strong agri-business presence: potatoes, sugar beets, dairies, and food processing plants.
- Employment opportunities in agriculture, education, healthcare, and light industry.

5. CENTRAL LOCATION

- Positioned along I-84 with easy access to Twin Falls, Boise, and Salt Lake City.
- Close enough to urban amenities while offering rural peace and privacy.

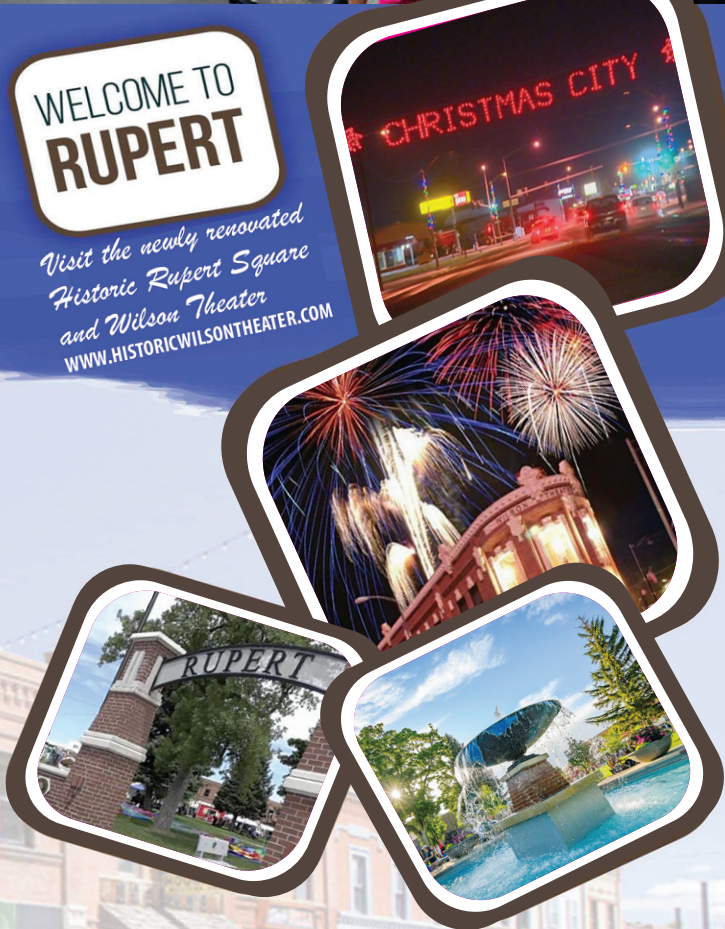
6. GOOD SCHOOLS AND FAMILY RESOURCES

- Local school districts are community-supported, with programs in sports, arts, and ag education.
- Community colleges and training centers nearby for workforce development.

7. HERITAGE AND CULTURE

- Rich agricultural history with a mix of cultures.
- Local museums, rodeos, and traditional events preserve and celebrate the region's heritage.

If you haven't experienced the Mini-Cassia area, we encourage you to come!



Winter: "Christmas City, USA" festivities, fireworks, festival of trees, Christmas market, Little Miss Christmas Pageant, and ice skating at the Historic Rupert Square.

Spring: Easter Egg Hunt, Annual Roll Call Monument Ceremony.

Summer: Patriotic Car Show, Independence Day Celebration and Fireworks, Magic Valley Folk Festival, Matilda the Musical, Smithsonian's Museum on Main Street.

Fall: The Wilson Wizarding Experience, Harvest Haunt, Princess Tea Party, Farm Girl Market, Western Music/Cowboy Poetry Gathering.

Year-round shopping, dining, recreation,
and entertainment!

Welcome to Rupert

THE GATEWAY TO LAKE WALCOTT AND THE MINIDOKA WILDLIFE REFUGE

Not every community has a park in the middle of its business district, but Rupert offers just such an attraction for shoppers and their families with the historic Rupert Square. The square features a gazebo, fountain, and playground.

July is a very busy month in Rupert, beginning with the Rupert Fourth of July Celebration. Residents celebrate for days with events including food, rodeos, carnivals, live concerts, a parade, and fireworks.

A Christmas in July Breakfast is held each year to raise money to refurbish and replace the spectacular holiday decorations that adorn the square during the holiday season and to help pay for the wonderful fireworks.

The day after Thanksgiving, Santa Claus flips the switch on the lights in the square which is followed by a wonderful firework display. There is also a chili feed that evening while Santa visits with youngsters. Caring and Sharing, a tree festival, is held in the Rupert Civic Center on Friday, Saturday, Sunday and Monday of Thanksgiving weekend.

Shoppers on and around the square can find a variety of restaurants and specialty shops, including a quilting shop, bookstore, and flower shop. Many of the shops are located in historic buildings listed on the National Register of Historic Places. The Drift Inn and Restaurant has restored their beautiful building to include a small boutique hotel, a lounge, and a fine dining establishment. Tours of the buildings are offered during community celebrations or by appointment.

A building of particular note is the Wilson Theatre, which has seen a major transformation that began in January 2000.



Built in 1920, the theatre fell into disrepair after closing in the mid-1980s and was purchased by the city in late 1999. The Renaissance Arts Center Inc. was created to pursue restoration. The theatre has completed renovations and restored to its original magnificence. This historic theatre remains the cornerstone of Rupert. The building is on the National Register of Historic Places and features a convention/community center on the second floor. Four offices are located on the southwest side. Tours and meeting space are available by calling 208-436-2787.

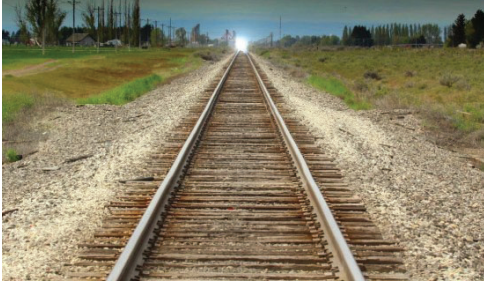
Besides community events, history and shopping, Rupert offers many recreational opportunities for visitors. Thanks to the work of various service groups, there are miles of paths for walkers, joggers, bicyclists, and in-line skating enthusiasts.



Minidoka County

Acequia

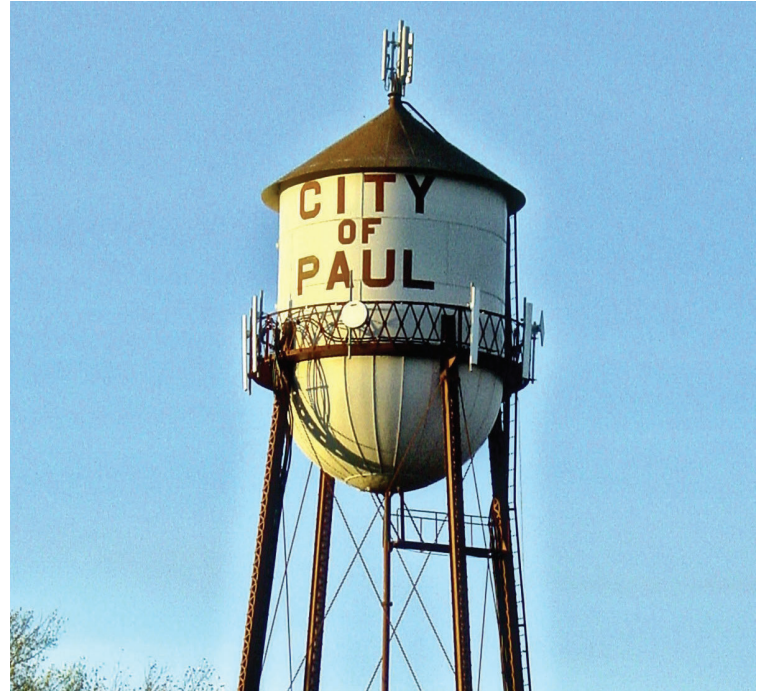
Located northeast of Rupert along State Highway 24, the city of Acequia was originally known as Scherrer. The name changed to Acequia in 1907. Acequia started in 1904 as a railroad siding for unloading settlers' livestock, machinery and supplies when land was opened up as part of the Minidoka Irrigation Project. There are no services available, but you will pass close to Acequia when traveling to Lake Walcott State Park and Minidoka Dam.



The railroad unloaded settlers' livestock, machinery, and supplies to the area for Minidoka Dam and other necessities.

Heyburn

Located on the north shore of the Snake River, the city of Heyburn is accessed by Interstate 84 Exit 211. The Mini-Cassia Chamber of Commerce and Visitors Center is housed in Heyburn and the staff can help direct visitors to many of the area's interesting sights and attractions. The visitors' center has lots of maps, brochures and other information for travelers. Adjoining the visitors' center is Riverside Park, featuring an amphitheater, full-service RV sites, a day park, boat docks and a walking path along the river. Nearby Emerald Lake offers activities such as swimming, picnicking, fishing and nonmotorized boating. To get to Emerald Lake take Interstate 84, Exit 208 and head north on Highway 27. At 300 S. turn right and go two miles to the second stop sign and turn right.

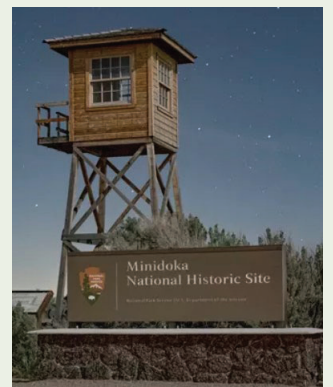


Paul

The city of Paul is located north of Burley and west of Rupert at the junction of State Highways 27 and 25. It was laid out by the U.S. Bureau of Reclamation as part of the Minidoka Irrigation project. The town is the hub of a vast farming area to the north and offers full services, groceries and restaurants and a new city park that features a snowtubing hill and has a great jet water fountain splash park.

Minidoka

Minidoka County's oldest community, the city of Minidoka, is a small town about 13 miles northeast of Rupert on State Highway 24. The city was established in 1884 as a mainline railroad siding. There is one restaurant in Minidoka. The town has several parks, playgrounds, a baseball field, picnic tables and benches. Minidoka is the southern entrance to the Great Rift area, with access roads for anyone who likes to go on desert explorations or ride recreational vehicles. Minidoka is a small, friendly community and welcomes visitors.



Welcome to Burley

THE BEST PLACE TO LIVE, WORK AND PLAY

Nestled in a bend along the Snake River midway between the metropolitan areas of Boise and Salt Lake City, Burley provides the same oasis for travelers today as it did for the wagons travelling the Oregon and California trails in the mid-1800s. The city of Burley, founded in 1905, has a rich history. Its location, next to the river in the shadows of the mountains, has been a strategic place for centuries.

With a population just over 10,000, Burley is the county seat for Cassia. This picturesque community offers countless opportunities for recreation and entertainment. The wonderful Robert Leathers-designed playground at Storybook Park, was built by more than 1,000 volunteers. This park, only the second of its kind in all of Idaho, was truly a community project.

Agriculture is the life blood of Burley. The combination of good soil, favorable topography, an

average irrigation season of about 200 days, and available irrigation water makes the surrounding lands highly productive. Burley is a farm, marketing and distribution center.

Burley enjoys outdoor activities year round. In the summer the beautiful Snake River is a haven for boaters and personal water craft. The mountains surrounding Burley are full of intense mountain bike and hiking trails, pristine lakes and hidden hot springs. Nearby City of Rocks offers world-class rock climbing with camping available as well. In the winter, Pomerelle Ski Resort offers 24 amazing runs. There are also many perfect getaways for snowmobiling and four-wheeling.

Burley offers many great amenities and has wonderful recreation opportunities in the area surrounding the city. Burley offers a business friendly environment and welcoming and friendly atmosphere.



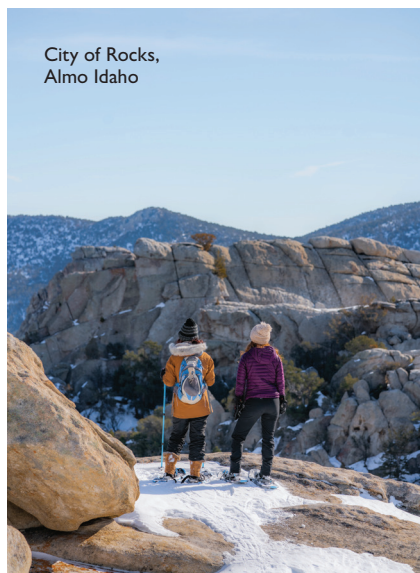
Rivers Edge Golf Course,
Burley Idaho

Cassia County

Albion

Nestled in the foothills along State Highway 77 southeast of Burley, Albion is the gateway to recreational areas in the mountains of southern Cassia County, including Mt. Harrison, Pomerelle Mountain Resort and the City of Rocks National Reserve. Albion was the original county seat of Cassia County and is rich with both history and natural beauty. On the historic campus of what once was the Albion State Normal School from 1893 to 1951, you will find a museum with memorabilia from the college as well as the famous trial of Diamondfield Jack. This museum is open on Saturdays from mid-May through mid-September or by appointment. The remainder of the campus -Campus Grove, is used for events, reunions and boasts the largest haunted mansion in Idaho. A popular tourist destination, Albion has a service station with mini-market, a motel, a bed-and-breakfast and restaurant that features a full bar.

Almo & Elba



City of Rocks,
Almo Idaho

PHOTO COURTESY OF SARAH ROHRBACH

Cache Peak rises above the small rural communities of Almo and Elba. The picturesque valleys were settled in the 1870's and many families still operate the original family ranches and farms. Even before these valleys were settled, pioneers traveling the California Trail knew of this region. Its unique granite rock formations were significant landmarks along the trail and still bear messages left by those early travelers. The City of Rocks National Reserve and the Castle Rocks State Park were created to preserve the history and natural beauty of the area.

Declo

East of Burley, at the junction of State Highways 77 and 81, is the city of Declo, originally known as Marshfield. A thriving agricultural settlement, Declo began in the early 1900's when the Minidoka Dam began providing irrigation water. Declo is famous for its agriculture, with farms producing sugar beets, beans, grains and the famous "Idaho Potato." Be sure to visit Declo during the Declo Day Celebration on the second Saturday in July. Festivities kick off with a fun run followed by the pancake breakfast, a parade and continue throughout the day with events at Kiwanis Park on Main Street.

Malta

Southeast of Declo near Raft River is the small city of Malta. The settlement started in about 1868, when cattlemen were drawn to the area because of the lush grass growing along Raft River. Gas, convenience items and meals are available in Malta. East of Malta, about 20 miles on Forest Road, is Sublett, popular for its fishing and camping recreation.

Oakley

Located on State Highway 27 between Burley and the City of Rocks, the quaint town of Oakley is the western gateway to the City of Rocks. Oakley has been designated a National Historical District because of its turn-of-the-century architecture. The streets are dotted with Victorian homes and other buildings, including the renovated Howells Opera House, where The Oakley Valley Arts Council stages theatrical productions. The Oakley Museum, on Main Street, is open May through Labor Day. The Oakley Dam creates Goosecreek Reservoir, a great place for fishing and boating. When the dam was constructed between 1909 and 1912 it was the largest earth-filled dam in the world. Oakley is also known for its Oakley stone, quarried from the South Hills and shipped worldwide. The town has access to camping, fishing and hunting within an hour's drive. Oakley is truly "a town for all seasons."

SEAN DOLAN

SEAN.DOLAN@MAGICVALLEY.COM

Idaho figured out long ago how to deliver a potato to anywhere in the country.

That expertise in logistics is one of the reasons the economy of the Mini-Cassia area continues to flourish, said Rupert City Administrator Kelly Anthon.

"The Magic Valley continues to be one of the premier places in the United States for companies to invest and find a home," Anthon, who also serves as a state senator, said.

If a company is looking for a central location, reliable employees, low taxes, supportive local government and cheap energy, there's no better place than southern Idaho.

Cities like Rupert, Heyburn and Burley continue to see economic growth and new jobs.

"Burley has been discovered over the last few years," Burley City Administrator Brett Boyer



Construction workers use boats to set up new equipment Wednesday, April 16, 2025, at the Sewage Disposal Plant in Rupert.

DREW NASH, TIMES-NEWS

said. "Anything related to agriculture, folks have been interested in Burley and with that comes other commercial enterprises and growth for the community."

To keep up with the demand for new industries — particularly wet industries like food processing, which require water and wastewater connections — cities in

Mini-Cassia are doubling down and investing in local infrastructure.

Burley is investing in the East Gate Project, a plan to widen the popular 16th Street corridor, which cuts through the middle of the town of 12,100, to provide easy access for folks coming in from nearby Heyburn and Declo.

The \$10 million road project is expected to begin in 2027, Boyer said, and is one of many infrastructure projects underway to create a more welcoming environment for industries. The city is also expanding its industrial sewer treatment plant.

"It's always infrastructure," Boyer said. "You know, having enough money to do roads, sewer, water."

The same goes for Rupert. Anthon said the city is currently working on a \$44 million project to expand its sewer treatment plant. Rupert has seen a new wet industry come to town about every two years.

"The wastewater capacity we need is for food processing," Anthon said. "Same for Burley. Same for Heyburn."

The area has not seen this level of economic growth since Chobani came to the Magic Valley in 2012.

"The economy has not slowed down at all," Anthon said.

Agriculture

ERIC GOODELL

ERIC.GOODELL@MAGICVALLEY.COM

RUPERT — An official of a company building a plant to produce pipeline for various infrastructure needs says it's more than a factory.

"It's a commitment to excellence and a testament to the impact we aim to make in the industry," explained Jordan Latham, vice president of production at Pipeline Plastics. "We're excited to bring our state-of-the-art manufacturing capabilities to Rupert and deliver solutions built for the future."

The facility, on which groundbreaking took place in January, will manufacture high-performance HDPE pressure pipes for water, energy, and industrial applications, capable of producing up to 65-inch-diameter pipe.

It is expected to be completed in late fall.

Pipeline Plastics to give Mini-Cassia an economic boost



COURTESY PHOTO

Officials gathered Friday, Jan. 17, 2025, for the groundbreaking ceremony of a Pipeline Plastics plant in Rupert. "It's a commitment to excellence and a testament to the impact we aim to make in the industry," said Jordan Latham, vice president of production at Pipeline Plastics.

It was designed with sustainability at its core, featuring energy-efficient operations and waste-reduction initiatives, ensuring that every pipe is built to last while minimizing environmental impact, officials say.

The new facility, strategically located in Rupert where it is in reach of western markets, will be built on more than 30 acres and be the fifth such plant for the Texas-based Pipeline Plastics.

"Pipeline Plastics is proud to partner with Rupert in building a brighter future for the local economy and the industries we serve," said Franck Irene, chief financial officer of Pipeline Plastics.

The facility is expected to create 50 jobs.

Some residents of the area pounced on the idea when the company expressed an interest in building here.

"When we were first contacted by Pipeline Plastics about building a facility in the Mini-Cassia area, we immediately recognized the potential benefits for the local

community," said Cade Jones of Gary D. Jones Construction, who played a key role in bringing the project together and is constructing the plant.

The plant is on track for an October completion date.

New Markets Tax Credit financing helped make the project a reality.

Financial backing for the initial construction of the facility was secured through a public-private partnership with D.L. Evans Bank and MoFi, a nonprofit community development financial institution in Boise that provides financial resources to rural communities and entrepreneurs across the western United States.

Eric Goodell reports for the Times-News. Reach him at Eric.goodell@magicvalley.com.

Deep Roots

MYCHEL MATTHEWS
MMATTHEWS@MAGICVALLEY.COM

Minidoka Museum-Offers New Children's Area Fort Minidoka

History abounds in Mini-Cassia and residents take pride in showing off their historical museums. Docents are looking forward to welcoming back visitors at the many museums in the area after two years of practicing pandemic protocols.

The tiny town of Albion has some of the deepest roots in the Magic Valley, dating back to cattlemen in the 1860s, back when Owyhee County engulfed most of southern Idaho. Cassia County was created in 1879 from the eastern half of Owyhee County and included what is now Twin Falls County.

Albion was the seat of Cassia County for 40 years — from 1879 until 1919 — and saw the county through infamous murders, trials and confessions in the late 19th century, and the development of the Twin Falls irrigation system in the early 20th century. Oakley, a pre-irrigation-era Mormon settlement close to the Utah border, also has an active historical society and museum.

A large photo in the Oakley Valley Historical Museum shows the family of Mormon pioneer Hector C. Haight, including sons David B. Haight — an elder in The Church of Jesus Christ of Latter-day Saints, father-in-law of billionaire philanthropist Jon Huntsman and grandfather of Utah Gov. Jon Huntsman Jr. — and Horton Granville Haight, husband of I.B. Perrine's daughter Stella.

The Haight/Perrine union was the "marriage of the century," joining the "royal families" of Oakley and Twin Falls, the Oakley Valley



Fort Minidoka PHOTOS COURTESY OF MINIDOKA MUSEUM



Historical Association former volunteer Robert Fehlman told the *Times-News* a few years ago.

IRRIGATION PROJECTS USHER IN NEW TOWNS

Burley, an irrigation town 20 miles north of Oakley, and Rupert, Burley's neighbor across the Snake River, became the seats of Cassia and Minidoka counties. Farmland in the combined area drinks from the Bureau of Reclamation's 1906 Minidoka Dam project.

The Cassia County Historical Museum reflects the struggles and triumphs of those on the land, from American Indians to cowboys and sheepmen, to farmers and businessmen.

Historic outbuildings — a log

store, a log schoolhouse and a one-room, sod-roofed log cabin built by Oakley pioneer Andrew Gustave Larson — were moved to the museum grounds and are used to show what life was like in 19th-century southern Idaho.

The museum building is chock full of interpretive displays showcasing pioneers and more recent dignitaries. The Cassia County museum complex also has a metal outbuilding with several rooms full of old firetrucks, covered wagons and Basque sheep camps and another dedicated to World War II veterans.

The Minidoka County Historical Museum is the only historical museum in the Magic Valley that — under normal circumstances

— is open year-round.

The museum complex also holds an impressive expanse of artifacts from the area, including American Indian tools, World War II military memorabilia and more than a century of digitized local newspapers. The site also houses the county seat's original jail cell.

A Union Pacific caboose and rail cars sit near Rupert's 1906 railroad depot, which was moved to the museum site in 1985. The town was named after a man named Rupert who hooked the mailbag from the train as it went by.

"So people 'went to Rupert' to get their mail," volunteer Gary Schorzman once told the *Times-News*. "If he missed it, everyone was mad."

MINIDOKA COUNTY HISTORICAL MUSEUM

Be sure to look for these interesting items:

- **AN 1898 WIRE FENCER** — the Kitselman Duplex Automatic Ball Bearing Woven Wire Fence Machine — that weaves wire into a fence on site. A three-man crew could construct a mile of fencing across hilly terrain in five days.
- **AN EXTENSIVE COLLECTION OF ICE AGE MAMMAL FOSSILS** found near Acequia.
- **A MASSIVE FIREARMS COLLECTION** donated by resident Wayne Birch.

MUSEUM INFORMATION

Where: 99 E. Baseline Road, Rupert
When: 10 a.m. to 3 p.m., Tuesdays through Fridays
Cost: Free admission
 Donations appreciated
Contact: 208-436-0336

CASSIA COUNTY HISTORICAL MUSEUM

Be sure to look for these interesting items:

- **THE LUXURY PULLMAN RAIL CAR** that once displayed what was said to be the mummy of John Wilkes Booth. William Evans, "Carnival King of the Southwest," paid a \$40,000 bond, plus a fee of more than \$2,000 a year, to display the mummy in what he called the greatest freak-animal show in the country.
- **A 1903 PHOTO OF ANNA HANSEN** acting in a play presented by the Albion Normal School. Hansen, daughter of Swedish pioneer John Hansen, later married surveyor John E. Hayes, who laid out many of the towns and canal systems in the area. Anna Hayes became influential in the Magic Valley, and the Shoshone Falls View Point is dedicated to her.
- **A GOLDEN EAGLE** electrocuted when a rabbit it carried in its talons touched a power line as it flew over. The museum went through the proper channels in order to have it stuffed and displayed in the World War II room.

MUSEUM INFORMATION

Where: East Main Street and Hiland Avenue in Burley
When: Summer Hours: April 15th to October 15th 10 a.m. to 5 p.m. Tuesdays through Saturdays Winter Hours: October 16th, 2025 through April 10th, 2026 10 a.m. to 5 p.m. Tuesdays, Thursdays, & Fridays

Cost: Free admission, Donations appreciated

Book your tour today visit during times below
 call (208) 678-7172
 email us at: cassiamuseum@cassia.gov

OAKLEY VALLEY HISTORICAL MUSEUM

Be sure to look for these interesting items:

At the museum, be sure to look for these:

- **A CEDAR POST** that marked the Idaho border at the northwest corner of Utah and the northeast corner of Nevada, about 20 miles south of Oakley
- **A CRAZY QUILT** made in 1906 by Marion resident Esther Frost, an English convert to the Mormon Church who worked as a seamstress in the home of Henry Wadsworth Longfellow after she came to America
- **A COLLECTION** of *Anabrus simplex*, commonly known as Mormon crickets, preserved in resin. Mormon crickets, actually shield-backed katydids, attacked Mormon settlers' crops in Utah during the mid-1800s

MUSEUM INFORMATION

Where: 140 W. Main St. in Oakley
When: 1 p.m. - 4 p.m. Fridays & Saturdays, Memorial Day to Labor Day
Cost: Free admission
 Donations appreciated

Village of Trees RV Resort



At Travel Stop 216 on the Snake River



Come rest, relax and renew with us!
 208.654.2133



Interstate 84 Exit 216
 Declo, Idaho 83323
www.villageoftreesrvresort.com
nancy@villageoftreesrvresort.com

Your Health Away From Home



Minidoka
 Memorial Hospital

(208) 436-0481
 1224 8th St, Rupert, ID 83350

Exploring Mini-Cassia Summer Destinations

The Lifeblood of the Region: The Snake River winds through Minidoka and Cassia counties, nourishing farmland and fueling the spirit of adventure for locals and visitors alike.

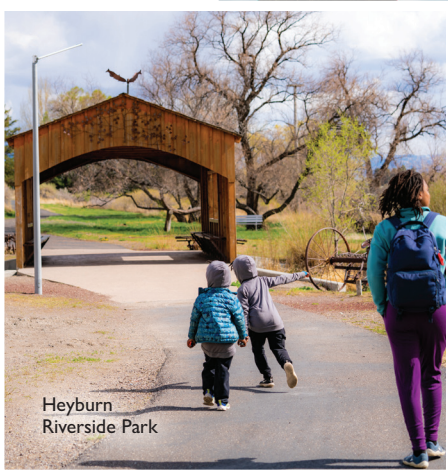
Fed annually by mountain snowmelt, the river supports a broad range of recreational activities, from boating and fishing to hiking and camping.

Near Rupert, **Lake Walcott and Minidoka Dam** serve as both the irrigation headwaters and a recreation hub. **Lake Walcott State Park**, just 12 miles northeast of Rupert, is surrounded by mature trees and encircled by the 24,000-acre Minidoka National Wildlife Refuge. A \$7 entrance fee grants access to a day of disc golf, birdwatching, picnicking, and swimming. The park also features basketball and horseshoe courts, ADA-accessible areas with spotting scopes, playgrounds, and more than 2.5 miles of paved trails for walking and biking. ATVs and motorbikes must stay on established roadways or in parking lots. If used in the park they must pay the \$5 motor vehicle entry fee or display an MVEF sticker or Idaho State Parks Passport. Boaters, wakeboarders, and kayakers can launch from ramps and docks, while anglers try their luck with trout, bluegill, perch, bass, and crappie. Campers can choose from 22 RV sites, 15 tent sites, and two cabins, with full amenities including restrooms and a shower house. Reservations are available at parksandrec-recreation.idaho.gov.

As the Snake flows westward, it reaches **Burley**, where the **Burley Golf Course Marina** draws kayakers, anglers, and skiers. From here, visitors can follow the **Burley Greenbelt Trail to Scholer Park**, then cross the **Burley-Heyburn Bridge** to **Heyburn's Riverside RV Park** and Arboretum. These interconnected parks offer playgrounds, picnic shelters, and even a summer amphitheater hosting local concerts. Public river access is also available near the Overland Bridge, and several local restaurants offer riverside dining with boat dock access.

Lake Walcott Kayaking

PHOTO COURTESY OF SARAH ROHRBACH



Heyburn Riverside Park

PHOTO COURTESY OF SARAH ROHRBACH



TO CRATERS OF THE MOON,
SAWTOOTH NATIONAL FOREST

MINIDOKA COUNTY

UNIMPROVED
PUBLIC ACCESS RAMP

ACEQUIA

"THE TREE"
PUBLIC ACCESS RAMP

RUPERT

FREEDOM PARK & POND

LEX KUNAU PARK

PAUL

LUCKY LAKE
208 RV PARK



EXIT
84

HEYBURN
RIVERSIDE PARK
MINI-CASSIA
CHAMBER OF COMMERCE
VIITOR CENTER

HEYBURN

EXIT
216

VILLAGE OF
RV RESORT

KOA
ACCES

DECLO

GRANNY'S PAD/
PETERSON'S ISLAND
PUBLIC ACCESS

BURLEY

BEDKE BLVD.
PUBLIC RAMP

EMERALD
LAKE

GOLF COURSE
PUBLIC BOAT RAMP

SCHOLER PARK

MILNER
RECREATION AREA

OAKLEY RESERVOIR

OAKLEY

GOOSE CREEK RESERVOIR



MINIDOKA

PUBLIC LAND
(RIVER ADJACENT)

MINIDOKA
BOAT RAMP

SMITH SPRINGS
ACCESS RAMP

LAKE WALCOTT
STATE PARK BOAT RAMP

BISHOP'S HOLE
RIVER ACCESS

MINIDOKA SPILLWAY
FISHING ACCESS

RAFT RIVER

TO POCA TELLO

OF TREES
PORT

OA PUBLIC
ACCESS RAMP

CASSIA COUNTY

INDEPENDENCE LAKES

ALBION

ALMO/MALTA

CITY OF ROCKS

TO POMERELLE
MOUNTAIN RESORT,
LAKE CLEVELAND

TO SALT LAKE,
SUBLETT RESERVOIR



Fishing Access



Boat Access



Park
(Pedestrian Access)



Recreation Area



Public Access



Hiking



Biking



PHOTO COURTESY OF WALLACE KECK

CASTLE ROCKS AND CITY OF ROCKS: ICONIC HIKING AND CLIMBING DESTINATIONS

In Almo, the breathtaking **City of Rocks National Reserve** and **Castle Rocks State Park** offer world-renowned climbing, plus 22 miles of maintained hiking and biking trails. While the parks are known for their rock formations, hiking is the most popular activity. Trails range from short, family-friendly routes like **Creekside Towers** and **Backyard Boulders**. Both are fairly level and relatively safe for beginners.

For the experienced hikers, explore the challenging treks like the nearly seven-mile **North Fork Circle Creek Trail** and the trail to 8,867-foot **Graham Peak Trail**.

Bikers can ride intermediate loops like the **Castle Rocks Trail**, which passes scenic meadows and ascends toward Cache Peak, or explore adventurous single-track descents on trails like **Tea Kettle** via **Breadloaves Trail**. While off-road motorized vehicles are not permitted on trails, they are allowed on public roads through the reserve with proper registration.

Wildlife enthusiasts may spot ground squirrels, jackrabbits, mule deer, and even moose or mountain lions—especially on backcountry trails in the early morning or evening hours. Fishing is available at the Castle Rocks trout pond, and backcountry camping is offered in designated areas like Indian Grove.

City of Rocks, there are 64 campsites to choose from and all campsites have a fire-ring/ground grill and a picnic table. Vault toilets located in central areas. For those seeking comfort, Castle Rocks offers glamping yurts and lodge rentals, complete with modern amenities and scenic views. Book at reserveamerica.com or call 888-922-6743. City of Rocks offers designated backcountry camping in the Indian Grove area. Permits are required for backcountry camping, please contact the Visitor Center at 208-824-5519.

UNIQUE ATTRACTIONS AND LOCAL LORE

Almo and the surrounding region offer more than recreation—they are steeped in history. Emigrants once etched their names in axle grease on the granite monoliths of the **City of Rocks**, leaving behind a tangible link to the Oregon and California Trails. The region's geological, cultural, and historical significance is on display throughout parks, trails, and visitor centers.

Whether you're following the path of pioneers, casting a line into alpine waters, or watching a sunset over the Snake River, Mini-Cassia's rugged beauty and diverse recreation opportunities make it an unforgettable destination.

Nine miles west of Burley, the **Recreational Area and Milner Dam** stretches into Cassia, Jerome, and Twin Falls counties. Four miles of Snake River shoreline, Milner is ideal for fishing by boat or from the shore for trout, bass, perch, catfish and carp is popular. Visitors can also enjoy camping and wildlife viewing. Interpretive displays educate visitors on the region's volcanic past, Native American history, and Oregon Trail emigrants. The landscape, marked by basalt cliffs and wide sagebrush plains, is home to birds and mule deer year-round.

HIGH-ALTITUDE ESCAPES

Nestled in the Albion Mountains of the **Sawtooth National Forest**, **Lake Cleveland** is a serene alpine retreat open from July through October. It offers kayaking, hiking, and two campground areas: reservable sites on the east side and rustic, tent-friendly options on the west.

Nearby trails, including the **Skyline Trail**, connect hikers to **City of Rocks** and offer panoramic views of Mount Harrison. Shorter shoreline hikes make the area perfect for casual explorers and photographers.

OTHER CAMPING AND OUTDOOR OPPORTUNITIES

- **McClendon Spring Campground**, managed by the BLM, offers a historical California Trail stop with semi-developed camping south of Burley.

- **Diamondfield Jack Campground**, located in Rock Creek Canyon, offers full amenities and access to over 60 miles of groomed trails for snow play, hiking, and OHV use. Nearby trails like **Eagle Trail** and **Middle Fork Shoshone Creek Trail** cater to all levels.

- **Durfee Hot Springs** offers a relaxing experience soaking in the natural springs. 2798 S. Elba-Almo Road Almo, ID.

2025 PARK PROGRAMS

City of Rocks National Reserve
& Castle Rocks State Park

Weekly Programs: (June 1 - September 6)

- **Mon-** 9am-11am Ranger Led Hike - City of Rocks
- **Tue-** 2pm-3p Cultural Demonstration Activities- Castle Rocks State Park
7pm-8pm Ranger Talk- Visitor Center
- **Wed-** 10am-11am 1st Adventures Program- City of Rocks
2pm-3pm Junior Ranger Program-City of Rocks
- **Thu-** 9am-11am Ranger Led Hike- Castle Rocks State Park
- **Fri-** 9am-11am Fishing Friday- Castle Rocks Pond (June only)
2pm-3pm Cultural Demonstration Activities- City of Rocks
7pm-8pm Ranger Talk- City of Rocks
- **Sat-** 10am-11am 1st Adventures Program- Castle Rocks State Park
2pm-3pm Junior Ranger Program- Castle Rocks State Park

EVENTS:

June 2-3: Birding Blitz

June 28: California Trail Day

July 12: Butterfly Count

July 25-26: CSI Astronomical Society Star Party- Castle Rocks State Park

September 27: Hispanic Heritage Event- Castle Rocks State Park

October 25: Ghosts of Pioneers Past- Visitor Center

December 13: Holidays at the Ol' Ranch- Castle Rocks State Park

'Insanity makes it fun':

Slush Cup highlight of Pomerelle Mountain Resort

ADAM ENGEL
ADAM.ENGEL@MAGICVALLEY.COM

Kelton Williams kept his description brief and accurate.

"Basically, you are skiing in water when it is snowing outside which is basically insane," Williams told the *Times-News*. "Insanity makes it fun. It is why people do it."

Insanity like folks dressed in costumes from Homer Simpson to a rainbow unicorn speeding down Pomerelle Mountain Resort to glide across a temporary pond.

Some crash immediately. Others sail across the pond and enjoy the applause.

Costumes mixed with fun and sunny skies the scene at the annual Slush Cup on April 5 — the season-closing marquee event at the Pomerelle Mountain Resort near Albion, where more than 40 skiers competed in the event.

"Some people don't make it across," Williams said. "A lot of people just sink right in. Lot of people crash. It is very chaotic."

Samson Milam, who resides in Twin Falls, visits the resort yearly for the Slush Cup and knows the challenge awaiting him.

"I saw ice in it (the pond) this morning so it is pretty cold," Milam told the *Times-News*.

He sported a unicorn costume and then became one of many who skied across the water unscathed.

"I think the whole point in the event is getting up here for the last day of the season," Milam said. "Hoorah. And seeing all the great costumes everyone is wearing and having a great time. Hopefully I will make it across this year because it is pretty cold."

The resort, traditionally open from late November to early April, features 24 groomed runs, two lifts, a magic carpet and a vertical drop of 1,002 feet.

"It is just so family friendly," Carol Warr told the *Times-News*. "For me, I like the pristine groomed runs. They do just such a spectacular job taking care of the grooming and the mountain."

In season, the resort operates seven days and five nights (excluding Sunday and Monday) each week.

"We like to do fun, outlandish things," Warr said. "The event — it is just such a good family event. It brings a lot of people out. They have



DREW NASH PHOTOS, TIMES-NEWS
John Reiber, 23, goes inverted during the Slush Cup on Saturday, April 5, 2025, at Pomerelle Mountain Resort near Albion.



McKay Christensen successfully crosses the pond during the Slush Cup on Saturday, April 5, 2025, at Pomerelle Mountain Resort near Albion.

Southern Idaho's Mini-Cassia area offers year-round outdoor recreation, including snowshoeing, skiing, and snowmobiling. Here are some great spots to enjoy winter activities:

WHERE CAN I SNOWSHOE?

Castle Rocks State Park & City of Rocks National Reserve offers winter activities including snowshoeing, cross-country skiing, ice climbing, and snowmobiling. Snowshoers enjoy the Creekside Towers Trail, while ice climbers head to Bath Rock. Snowmobilers can explore the county road, which is closed to vehicles in winter.

The Visitor Center rents snowshoes and poles from December to March, depending on snow levels. Many roads in the reserve aren't maintained in winter; but snowmobiling can provide access to these areas, though it's limited to established roads.

Lake Walcott State Park is another spot for easy snowshoeing, with wildlife sightings like deer and native birds. It's also a popular spot for ice fishing and cross-country skiing.

Cassia County boasts a 120-mile groomed trail system in the Sublett Range. Access it via Yale Road off I-84, or from Howell Canyon near Pomerelle Mountain Resort. The trailhead offers a large riding area and facilities, including a warming hut.

such good food and it is a big kickoff to the end of the season."

Pomerelle's summit elevation is 8,762 feet above sea level with a vertical drop of 1,002 feet. There are two chairlifts (both triple) and a magic carpet for the beginner area. The average annual snowfall is 500 inches.

One of the oldest ski areas in the western U.S., Pomerelle began its operations in 1940.

Pomerelle features a spacious lodge at the base of the mountain, offering foods and beverages. The Slope Side Grill outside the lodge, on the deck, offers hamburgers, hot dogs and cold drinks. The basement offers restrooms, lockers, a full line of accessories and rentals.

Day passes range from \$53 (pre-purchased) for adults to \$68 at the window. Youth 6 and younger are free with a pre-purchased day passes.

Season passes vary from \$599 for 13 and older or \$10 for 6 and younger.

"It is very cheap and very close actually so it makes it very convenient," Williams said.

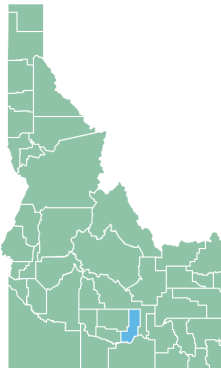
The resort, family-owned since 1972, sits about 13 miles south of Albion, 21 miles south of Declo and 30 miles southeast of Burley.



Minidoka County Labor Force And Economic Profile

Minidoka County Economic Overview

Civilian Labor Force (Mar 2025)	11,713
Unemployment Rate (Mar 2025)	3.4%
Population (2024)	22,691
Median Household Income (2023)	\$70,060
Per Capita Personal Income (2023)	\$49,862
Poverty Rate (2023)	14.9%



10. Top 10 Cities Where People Who Live in Minidoka County Work, 2022

City of Employment	Count of All Jobs	Percentage of Total Jobs
Burley	2,132	21.2%
Rupert	1,303	13.0%
Twin Falls	744	7.4%
Boise	433	4.3%
Heyburn	422	4.2%
Paul	267	2.7%
Acequia	167	1.7%
Meridian	120	1.2%
Nampa	110	1.1%
Pocatello	110	1.1%

Note: "All Jobs" includes private and public sector jobs. It also includes a count of workers with multiple jobs. Source: US Census Bureau-Longitudinal Employer-Household Dynamics (LEHD)

1. Minidoka County Demographic Characteristics, 2023 5-Year ACS

	Minidoka County	Minidoka County (%)	State of Idaho (%)	United States (%)
Total Population	21,922	100.0%	1,893,296	332,387,540
Race and Ethnicity				
White alone, not hispanic	15,808	72.1%	83.3%	63.4%
Black or African American alone, not hispanic	67	0.3%	0.7%	12.4%
Native American alone, not hispanic	226	1.0%	1.1%	0.9%
Asian alone, not hispanic	86	0.4%	1.3%	5.8%
Hispanic, or Latino (of any race)	8,042	36.7%	13.3%	19.0%
Gender				
Male	11,236	51.3%	50.3%	49.5%
Female	10,686	48.7%	49.7%	50.5%
Age				
Median age	34.5	-	37.1	38.7
Under 18 years	6,407	29.2%	24.5%	22.2%
Over 18 years	15,515	70.8%	75.5%	77.8%
21 years and over	13,620	62.1%	65.7%	68.7%
Over 65 years	3,443	15.7%	16.6%	16.8%
Educational Attainment (Population 25 years and over)				
Less than 9th grade	1,219	5.6%	2.1%	3.2%
High school graduate (with equivalencies)	4,723	21.5%	17.0%	18.0%
Some college, no degree	2,942	13.4%	16.3%	13.3%
Associate's degree	1,220	5.6%	6.4%	6.0%
Bachelor's degree	1,326	6.0%	13.7%	14.6%
Graduate or professional degree	967	4.4%	6.8%	9.4%
Median Household Income	\$70,060	-	\$74,636	\$78,538

Source: US Census Bureau, American Community Survey 5-Year Estimates

2. Labor Force Growth, March 2024 to March 2025

	Labor Force	Employment	Unemployed	Unemployment Rate
March 2025	11,713	11,315	398	3.4%
March 2024	11,810	11,437	373	3.2%
YoY % Change	-0.8%	-1.1%	6.7%	0.2%

Source: Idaho Department of Labor-Local Area Unemployment Statistics (LAUS)

Idaho Department of Labor

labor.idaho.gov

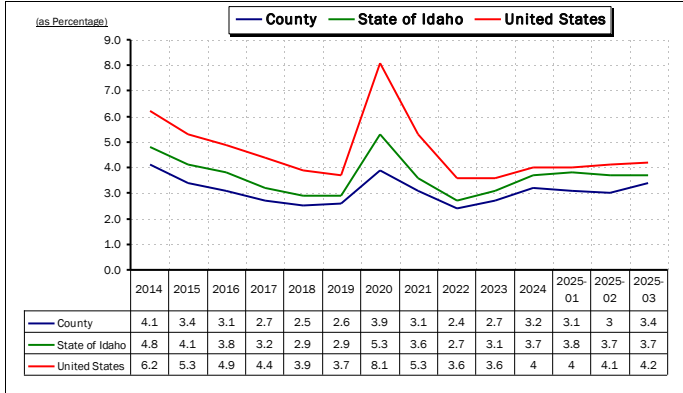


A proud partner of the
americanjobcenter
network

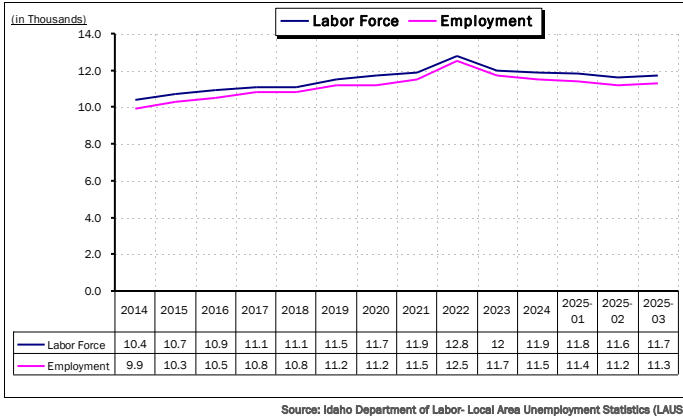
The Idaho Department of Labor is an equal opportunity employer and service provider. Reasonable accommodations are available upon request. Dial 711 for Idaho Relay Service.

Minidoka County Labor Force And Economic Profile

3. Seasonally-Adjusted Unemployment Rate, 2014 to March 2025



4. Seasonally-Adjusted Labor Force and Employment, 2014 to March 2025



5. Industry Employment and Wages, 2013, 2022, and 2023

Supersector	2013		2022		2023	
	Average Employment	Average Wages	Average Employment	Average Wages	Average Employment	Average Wages
Total Covered Wages	6,827	\$33,651	8,558	\$45,314	9,032	\$48,388
Natural Resources and Mining	1,355	\$31,494	1,391	\$45,996	1,396	\$48,925
Construction	356	\$38,624	510	\$54,454	559	\$61,593
Manufacturing	1,055	\$52,136	1,285	\$56,066	1,339	\$58,840
Trade, Transportation, and Utilities	1,633	\$35,794	1,948	\$48,824	2,205	\$50,307
Information	146	\$34,153	211	\$48,557	195	\$53,461
Financial Activities	122	\$34,128	139	\$44,273	151	\$50,828
Professional and Business Services	140	\$26,689	241	\$38,929	254	\$66,135
Education and Health Services	1,019	\$26,343	1,670	\$41,323	1,699	\$42,218
Leisure and Hospitality	403	\$11,255	464	\$19,605	521	\$20,799
Other Services	163	\$23,041	264	\$34,002	272	\$36,051
Public Administration	435	\$27,209	435	\$36,841	441	\$39,281

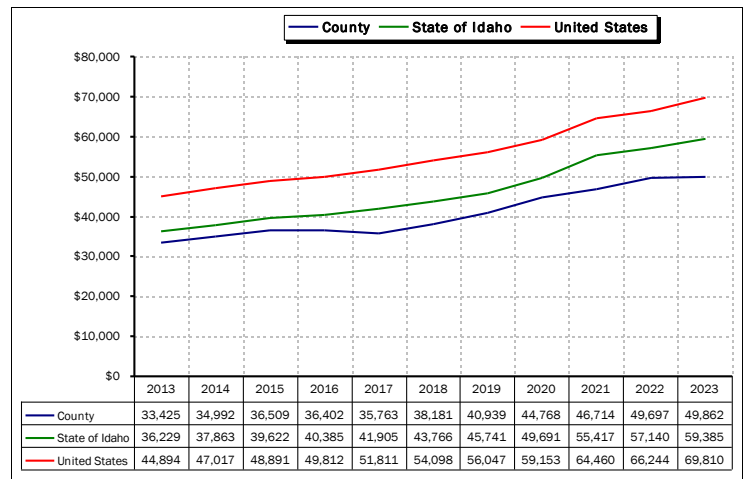
Source: Idaho Department of Labor- Quarterly Census of Employment Wages (QCEW)

6. Top Employers, 2023

Employer	Ownership	Employment Range
Amalgamated Sugar Company	Private	500 - 999
Minidoka County Joint School District	Local Government	500 - 999
Progressive Behavior Systems	Private	250 - 499
Minidoka Memorial County Hospital	Local Government	250 - 499
Wal-mart	Private	250 - 499
Loves Travel Stops And Country Store	Private	100 - 249
Minidoka County	Local Government	100 - 249
Altitude Supported Living	Private	100 - 249
City Of Rupert	Local Government	100 - 249
Best Western/perkins-burley	Private	050 - 099

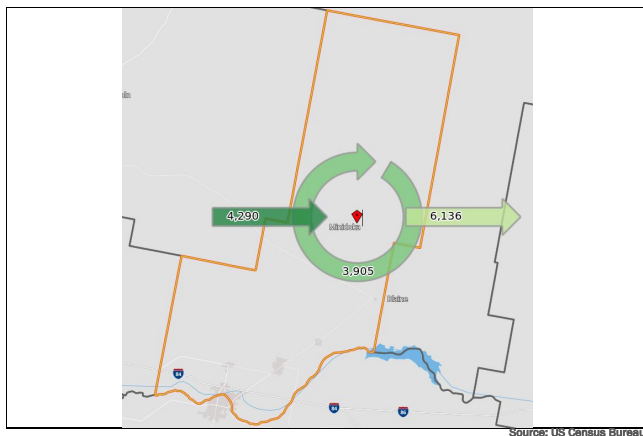
NOTE: Only employers that have given the Department permission to release employment range data are listed.
Source: Idaho Department of Labor- Quarterly Census of Employment Wages (QCEW)

7. Real Per Capita Income, 2013 to 2023



8. Labor Force Commuting Patterns, 2022

It is estimated that 3,905 workers lived and worked in Minidoka County in 2022. Another 4,290 workers were employed in Minidoka County but lived outside, while 6,136 workers commuted to other counties for work.

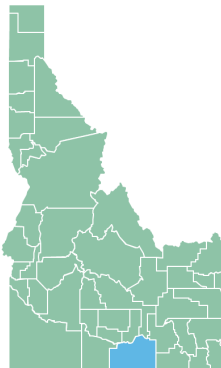




Cassia County Labor Force And Economic Profile

Cassia County Economic Overview

Civilian Labor Force (Mar 2025)	12,437
Unemployment Rate (Mar 2025)	3.2%
Population (2024)	25,976
Median Household Income (2023)	\$67,042
Per Capita Personal Income (2023)	\$54,685
Poverty Rate (2023)	10.3%



10. Top 10 Cities Where People Who Live in Cassia County Work, 2022

City of Employment	Count of All Jobs	Percentage of Total Jobs
Burley	3,275	29.3%
Twin Falls	769	6.9%
Rupert	546	4.9%
Boise	495	4.4%
Heyburn	281	2.5%
Pocatello	157	1.4%
Nampa	149	1.3%
Paul	142	1.3%
Meridian	127	1.1%
Idaho Falls	126	1.1%

Note: "All Jobs" includes private and public sector jobs. It also includes a count of workers with multiple jobs. Source: US Census Bureau- Longitudinal Employer-Household Dynamics (LEHD)

1. Cassia County Demographic Characteristics, 2023 5-Year ACS

	Cassia County	Cassia County (%)	State of Idaho (%)	United States (%)
Total Population	25,165	100.0%	1,893,296	332,387,540
Race and Ethnicity				
White alone, not hispanic	18,194	72.3%	83.3%	63.4%
Black or African American alone, not hispanic	21	0.1%	0.7%	12.4%
Native American alone, not hispanic	254	1.0%	1.1%	0.9%
Asian alone, not hispanic	74	0.3%	1.3%	5.8%
Hispanic, or Latino (of any race)	7,408	29.4%	13.3%	19.0%
Gender				
Male	12,928	51.4%	50.3%	49.5%
Female	12,237	48.6%	49.7%	50.5%
Age				
Median age	33.1	-	37.1	38.7
Under 18 years	7,858	31.2%	24.5%	22.2%
Over 18 years	17,307	68.8%	75.5%	77.8%
21 years and over	14,977	59.5%	65.7%	68.7%
Over 65 years	3,450	13.7%	16.6%	16.8%
Educational Attainment (Population 25 years and over)				
Less than 9th grade	981	3.9%	2.1%	3.2%
High school graduate (with equivalencies)	4,060	16.1%	17.0%	18.0%
Some college, no degree	4,055	16.1%	16.3%	13.3%
Associate's degree	1,542	6.1%	6.4%	6.0%
Bachelor's degree	2,086	8.3%	13.7%	14.6%
Graduate or professional degree	1,044	4.1%	6.8%	9.4%
Median Household Income	\$67,042	-	\$74,636	\$78,538

Source: US Census Bureau, American Community Survey 5-Year Estimates

2. Labor Force Growth, March 2024 to March 2025

	Labor Force	Employment	Unemployed	Unemployment Rate
March 2025	12,437	12,041	396	3.2%
March 2024	12,320	11,955	365	3.0%
YoY % Change	0.9%	0.7%	8.5%	0.2%

Source: Idaho Department of Labor- Local Area Unemployment Statistics (LAUS)

Idaho Department of Labor

labor.idaho.gov

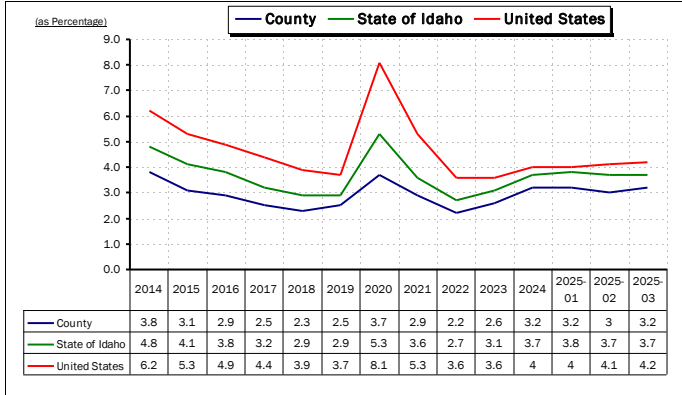


A proud partner of the
americanjobcenter
network

The Idaho Department of Labor is an equal opportunity employer and service provider. Reasonable accommodations are available upon request. Dial 711 for Idaho Relay Service.

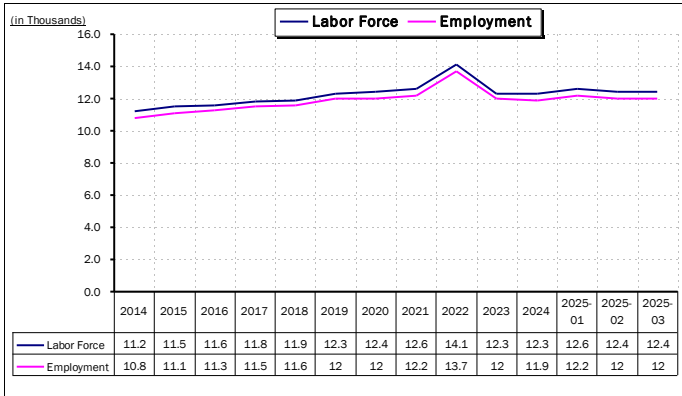
Cassia County Labor Force And Economic Profile

3. Seasonally-Adjusted Unemployment Rate, 2014 to March 2025



Source: Idaho Department of Labor- Local Area Unemployment Statistics (LAUS)

4. Seasonally-Adjusted Labor Force and Employment, 2014 to March 2025



Source: Idaho Department of Labor- Local Area Unemployment Statistics (LAUS)

5. Industry Employment and Wages, 2013, 2022, and 2023

Supersector	2013		2022		2023	
	Average Employment	Average Wages	Average Employment	Average Wages	Average Employment	Average Wages
Total Covered Wages	10,381	\$31,137	12,446	\$44,753	12,446	\$44,753
Natural Resources and Mining	1,660	\$31,815	2,065	\$43,769	2,065	\$43,769
Construction	427	\$35,012	649	\$49,200	649	\$49,200
Manufacturing	1,391	\$41,165	1,717	\$54,279	1,717	\$54,279
Trade, Transportation, and Utilities	2,670	\$31,994	3,006	\$50,857	3,006	\$50,857
Information	90	\$46,547	88	\$64,913	88	\$64,913
Financial Activities	241	\$39,516	327	\$61,168	327	\$61,168
Professional and Business Services	497	\$27,786	639	\$45,111	639	\$45,111
Education and Health Services	1,998	\$26,254	2,147	\$39,023	2,147	\$39,023
Leisure and Hospitality	644	\$11,210	1,036	\$16,071	1,036	\$16,071
Other Services	216	\$16,683	230	\$31,399	230	\$31,399
Public Administration	547	\$40,197	542	\$48,735	542	\$48,735

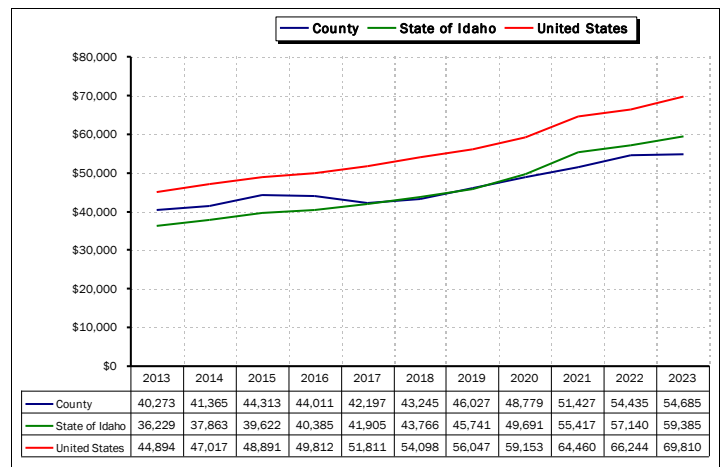
Source: Idaho Department of Labor- Quarterly Census of Employment Wages (QCEW)

6. Top Employers, 2023

Employer	Ownership	Employment Range
Cassia County Joint School District	Local Government	500 - 999
Mccain Foods	Private	500 - 999
Wal-mart	Private	250 - 499
Dot Transportation	Private	100 - 249
Moo Mountain Milk	Private	100 - 249
Idaho Milk Transport	Private	100 - 249
Cassia County	Local Government	100 - 249
Goode Auto Group	Private	100 - 249
Smith's Food And Drug	Private	100 - 249
Ag Express	Private	100 - 249

NOTE: Only employers that have given the Department permission to release employment range data are listed.
Source: Idaho Department of Labor- Quarterly Census of Employment Wages (QCEW)

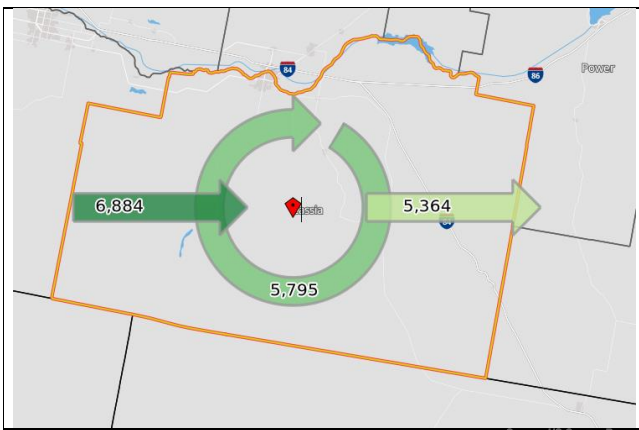
7. Real Per Capita Income, 2013 to 2023



Source: U.S. Bureau of Economic Analysis

8. Labor Force Commuting Patterns, 2022

It is estimated that 5,795 workers lived and worked in Cassia County in 2022. Another 6,884 workers were employed in Cassia County but lived outside, while 5,364 workers commuted to other counties for work.



Source: US Census Bureau



DREW NASH, TIMES-NEWS

Duane Grant, chairman of the board for Mart Group, speaks during a dedication and ribbon-cutting ceremony for Mart Frozen Foods on October 2, 2024 in Rupert.

New potato: Rupert company reinvents the baked potato

TIMES-NEWS

RUPERT — Mike Larsen has access to as many potatoes as almost anyone he knows.

He's the chief marketing officer for the Mart Group, a company that specializes in delivering sustainably farmed potato products to grocers, distributors, and wholesalers.

But getting a perfectly baked potato can take time, something a lot of people don't seem to have much of these days.

A microwave oven might be an easy solution, but many dislike the less-than-crispy potato skin that can result, and prefer the taste of an oven-baked potato.

That's when a new product by the Mart Group comes in handy.

Mart Produce has launched the OH!Tatoes

fully baked Idaho potatoes that are flash-frozen so people with a hankering for a tater can enjoy a baked potato in four minutes by popping one in the microwave, or about 25 minutes in an air fryer.

It brings convenience to the — "I certainly eat a lot more baked potatoes now," Larsen said, adding that the taste is great, like a good, oven-roasted potato.

In October, Mart Produce, based in Rupert, held a ribbon cutting on its 100,000-square-foot, \$65 million plant that has oven technology to bakes the tubers to perfection, taking about 40 minutes, similar to how people would cook a raw potato at home.

Then they are flash frozen with the skin on and packaged in resealable bags.

"They eat very well," Larsen said. "The skin

turns out really nice."

No preservatives are added to the potatoes, Larsen said.

"The one and only ingredient is the Idaho potato," Larsen said. "After they are heated you can add whatever you want, butter and heavy whipping cream."

And these potatoes aren't just for people living in the Intermountain West.

In addition to many Associated Food stores, OH!Tatoes will be sold in Japan, Mart Frozen Foods' largest food service consumer.

In fact, another company found success selling similar potatoes in Japan as a way to get around a ban on fresh potatoes in the country. That company was World Wide Foods in Burley, which Mart Group purchased a couple of years ago.

World Wide Foods had been selling a similar product overseas.

Mart Produce says it aims to produce other potato products.

While Idaho is globally known for having the highest quality potatoes, Mart Group chairman of the board Duane Grant said the downside is that fresh potatoes have a certain shelf life, while the frozen OH!Tatoes can stay good much longer.

President and CEO of The Mart Group Julian Critchfield said he has received positive feedback from consumers, who said they valued the convenience of having a baked potato in just four minutes rather than baking the potato in the oven for an hour.



Critchfield

The new product has gotten good input locally, Larsen said.

"I think a lot of people who know us are using it," he said, and are excited to see another food option in Magic Valley.

And the plant is expected to have a significant financial impact on Magic Valley, creating 80 full-time jobs in Rupert. Total financial impact is estimated at \$11.3 million annually.



A bag on OH!Tatoes is pictured.
PHOTO COURTESY OF MART GROUP

Jon Searle
INSURANCE AGENCY, Inc.
Health | Medicare | Life

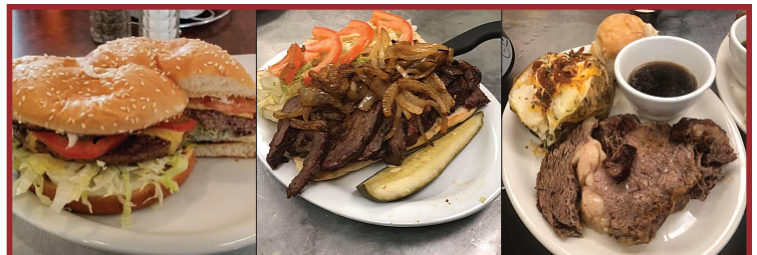


Call Jon and Amanda Today!

(208) 678-9056

JON SEARLE INSURANCE AGENCY INC

1711 Overland • Burley, ID



**Burgers • BBQ • Steak
Steak Sandwiches • Prime Rib**

Check out full menu on
Facebook

Indoor & Outdoor Dining
Catering

Edith's Cafe

Best Burgers in Town

144 E Hwy 81 Burley
208-878-2248

Tues. – Sat.
11 am – 8/9 pm

Mini-Cassia Events Calendar

Check more fun things to do off your list using our detailed Calendar of Events with dates at www.minicassiachamber.com.

Find upcoming events, attractions, festivals, shows, concerts, classes, and more.

CALENDAR

JANUARY

POWDER PLAY

It's a snow lovers' paradise in the higher elevations! Southern Idaho is surrounded by excellent sledder country. Snowmobiling, snowshoeing, snow kiting (or kite skiing), downhill skiing, and snowboarding are all an easy drive away. Sled heads can enjoy great terrain up at Pomerelle Ski Resort or north to the Stanley basin area. Snowshoe adventurers can explore more than 22 miles of area in the City of Rocks and 12 miles in Castle Rocks State Park.

MARCH

MAR
17

ST. PATRICK'S DAY AT POMERELLE MOUNTAIN RESORT

Shamrocks are hidden on or around the slopes. Find a green, silver or gold shamrock, take it to Pomerelle's ticket office, and collect your prize! Take the "Pot of Gold" Challenge!

www.pomerelle.com

APRIL

GEOCACHING SOUTHERN IDAHO

Break out the GPS global positioning system and head to the Mini-Cassia area! Explore the off-beaten path and see where it leads. Similar to treasure hunting, participants search for a cache, usually an old film canister containing a pencil and notebook to record you found it! Sometimes it contains a toy or keepsake but be sure to bring something small to replace any treasure you take from the canister. One great geocache in our area takes adventurers out to where the Oregon and California trails split. Checkout geocaching.com for tips & tricks.

MAY

GET YOUR BLOOM ON

Springtime is the best time to head to the Albion Mountains by Pomerelle Ski Resort and Mt. Harrison Lookout (9,265 ft. elev.) The hills are alive with a variety of wildflower blossoms. White, pink, yellow, blue, red blossoms can be seen throughout the hills. Look closely and you may find a Mountain Bluebird, the Idaho State Bird. 208.679.4793



BE A PART OF SOMETHING BIG.
HELP US BUILD HOPE — AND MAYBE EVEN
WIN BIG WHILE YOU'RE AT IT!

Why Enter?

- ✓ Drive away in a stunning new Bronco
- ✓ Invest in the future of our youth
- ✓ Help us build a safe and welcoming center for families

✶ Proceeds go directly to the Simply Hope Building Fund

Live Drawing December 5th 2025

*See simply-hope.com for rules and details

*MUST be 18 years of age

*Employees and Spouses of Simply Hope ineligible to participate

www.simply-hope.com

Win!

2025 Ford Bronco Outer Banks

Don't miss your chance to drive off in style!—limited tickets available for our 2025 Ford Bronco raffle!

www.simply-hope.com



Simply Hope

Family Outreach

BRONCO GENEROUSLY
DONATED BY

GOODE MOTOR



MOUNTAIN HIGH

Mt. Harrison is the northernmost major mountain in the compact Albion Mountain Range. Mt. Harrison holds an alpine lake and a glacial cirque, rare for the region. There road from Lake Cleveland to the summit, which make route finding and summiting a more casual hike. Enjoy a 360-degree view of the entire region from the Mt. Harrison Fire Lookout. Bring a windbreaker!

208.679.4793

JUNE

JUN
7 & 8

MINI-CASSIA CAR SHOW

Hundreds of classic cars cruise to the Cassia County Fairgrounds in Burley for this annual event that draws collectors

from around the Pacific Northwest.

208.670.5055 or 208.312.2469

**BURGERS
THAT MEAN
BUSINESS.**



© 2016 DFO, LLC. At participating restaurants for a limited time only. Selection and prices may vary.

Visit your local Denny's at 611 N. Overland Ave. • Burley, ID

20% OFF

ENTIRE GUEST CHECK*

*You must print and present this coupon to receive 20% off your entire check. One coupon, per table, per visit. Not valid with any other coupons, promotional offers or AARP 15% off entire check discount. This offer can be redeemed only once by the original recipient. Coupon has no cash value. No change returned. Taxes and gratuity not included. Alcoholic beverages not included. Valid at participating restaurants only. Selection and prices may vary. No substitutions. Dine-in only. © 2016 DFO, LLC. Offer ends August 31, 2025



Idaho Regatta
PHOTO COURTESY OF
TIMES-NEWS FILE PHOTO

CALENDAR

JUN
12

FREE FISHING DAY

The one day a year when all Idaho residents & non-residents can celebrate the day fishing Idaho's waters without a license!

www.fishandgame.idaho.gov

JUN
25

MINI CASSIA SCRAMBLE FOR COMMERCE GOLF TOURNEY

River's Edge Golf Course in Burley
www.minicassiachamber.com/golf-scramble.html

JUN
26-29

IDAHO REGATTA

The Snake River roars to life with this annual family friendly boat race! Show & Shine Boat Show takes place Friday on the Rupert

Square. Jet powered boats race at speeds up to 130 mph Saturday & Sunday at the Burley Boat Docks.

www.idahoregatta.org

JULY

JUN JUL
28-4

RUPERT 4TH OF JULY

Rupert celebrates for SIX days of awesome events starting on June 28 – July 4. Fireworks, horse races, hometown parade, lawn mower races, carnival, live entertainment & so much more make the City of Rupert THE place to be to celebrate the Fourth of July!
www.rupert4th.com

JUL
12

WAKE IN THE SNAKE

Catch intense wakeboard action on the Snake River at Burley hosted by Idaho Water Sports! Watch wave riders compete to see who will go big or go home!
www.idahowatersports.com



Wake in the Snake

PAT SUTPHIN, TIMES-NEWS FILE PHOTO

JUL
11-12

DECLO DAYS

Enter the Hammer 5K run or come for the food, fun, live entertainment, dunk tank, friendly family competitions & a parade celebrating small town life in picturesque Declo, just east of Burley.

JUL
11-19

OAKLEY PIONEER DAYS

Travel back in time with a visit to Oakley Pioneer Days! Enjoy a fantastic hometown rodeo, food, dancing, live entertainment, bumper car races July 11-19 and fireworks! 208.862.331

JUL
26

SPUDMAN TRIATHLON

Always the last Saturday in July! Hundreds of athletes from around the globe descend on the Mini-Cassia area to swim, bike & race in a competition that draws world-class competition.
www.spudman.org

AUGUST

JUL AUG
28-2

MINIDOKA COUNTY FAIR & RODEO

Great family fun for all ages takes place the first week in August with live entertainment, lawnmower races, Dutch Oven Cobbler & Ice Cream Social, western rodeo, 4-H and FFA competitions. No gate charge & free parking!
www.minidokacountyfair.org



Hruza Insurance Agency

723 South 3rd Street Rupert • 208-436-4420



We Care About People
Providing a full line of insurance & financial services.

Se Habla Español

208-436-4420

723 South 3rd Street Rupert



PHOTO COURTESY OF
CASSIACOUNTYFAIR.COM



PHOTO COURTESY OF CASSIACOUNTYFAIR.COM



PHOTO COURTESY OF CASSIACOUNTYFAIR.COM

AUG
9-16

CASSIA COUNTY FAIR & RODEO

So much to see & do during the week of the Annual Cassia County Fair & Rodeo in Burley! Parade begins Wednesday at 10:30 a.m. followed by three nights of rodeo action Thursday, Friday & Saturday. Carnival rides, farm, garden, animals, Saturday night concert, live entertainment & other exhibits make this one of the county's most cherished events.
www.cassiacountyfair.com

AUG
23

PAUL PALOOZA

Greased watermelons, candy cannons,

snow cones, face painting, great food, games for the kids, splash park, fun & fellowship make this an awesome event for the entire family! 11 a.m. to 3 p.m. at Paul City Park. 208.438.4101



PHOTO COURTESY OF CITYOFPAUL.ORG



- Indoor Pool & Hot Tub
- Business Center
- Free Wifi
- Hot Breakfast
- Meeting Room



Fairfield
BY MARRIOTT

Just off I-84 Exit 208
Burley, Idaho 83318
208.677.5000
WWW.BURLEYFAIRFIELD.COM



PHOTO COURTESY OF STEPHEN REISS, TIMES-NEWS FILE PHOTO

SEPTEMBER

S E P
13

DRY CREEK OUTFITTERS OPEN BASS TOURNAMENT

Please head to the Burley Golf Course Boat Ramp @ 6 a.m. for the Annual Veteran's Tribute Fireworks show! Then you can enjoy (current text) The perfect end of the year celebration with food, fun & friends! Bass fishing on the beautiful Snake River.
www.drycreekoutfitters.com



OCTOBER

O C T N O V
2-1

HAUNTED MANSIONS OF ALBION HALLOWEEN

Come see the largest haunted attraction in the Northwest! Located at the abandoned Albion State Normal School, the haunted mansions feature tours through several of the old college buildings! Zombies, clowns, and rumors of paranormal activity have made this an attraction that brings thousands to Albion every fall.
Open: Thursdays, Fridays, Saturdays 7 p.m. to midnight.
www.hauntedmansionsofalbion.com

NOVEMBER



PHOTO COURTESY OF LAURIE WELCH, TIMES-NEWS FILE PHOTO

N O V
19-22

CASSIA FESTIVAL OF TREES

This event is held the week before Thanksgiving. The Gala kicks off the event on Wednesday evening. All proceeds help to provide scholarship opportunities for local high school & college students who are planning to earn a degree in the medical field. Grants to local quick response units, to aid in the purchase of needed supplies & equipment, as well as a local school endowment programs to assist schools with the purchase of needed medical supplies.



The Best Vet Care for Your Pet

- Preventive Care • Vaccines
- Spay/Neuter • Illness & Injury
- Dental Care • Surgery • Nutrition



Dr. Jordan Nesbit, D.V.M.
2190 H Street, Heyburn
208-678-1177

arkidvet@gmail.com | arkvethospital.com



PHOTO COURTESY
OF FACEBOOK.COM/
MINICASSIATURKEYTROT

DECEMBER

DEC
1

LIGHTED CHRISTMAS PARADE

One of the most exciting holiday parades to watch! Enjoy the Lighted Christmas Parade in downtown Burley the 1st Monday in December. Floats and vehicles are breathtaking to view adorned in Christmas lights!
208.670.2408



Rupert Square
Lighting

PHOTO COURTESY OF
SUGAR BEET DROP
FACEBOOK PAGE

NOV
27

MINI-CASSIA TURKEY TROT

One of the Best Thanksgiving Day traditions! Run-Walk-Waddle or Trot for this awesome 5K event! Proceeds raised from the race go to local community groups. 9 a.m.

www.minicassiatrout.com

NOV
28

RUPERT SQUARE CHRISTMAS LIGHTING

Santa Claus arrives to light up the Rupert Square & ignite the holiday spirit! A time honored tradition of savoring chili and a delicious cup

of hot chocolate while watching Santa parade around the square! An amazing fireworks show lights up the night sky to cap a wonderful holiday tradition. Little ones will have an opportunity to sit on Santa's lap and tell him what they wish for Christmas!

DEC
31

THE SUGAR BEET DROP ON RUPERT SQUARE

Ring in the New Year with the Sugar Beet Drop on the Rupert Square!



PHOTO COURTESY OF
TIMES-NEWS FILE PHOTO
Rupert Square Beet Drop

We Keep You Running
Agriculture and Industrial
Parts • Tools • Chain • Cable
Nuts & Bolts • Hard-to-find-parts

A.M.I. SUPPLY
Ag. Mfg. & Ind. Supply

719 Overland Ave, Burley • 208-678-4632

MEMORIAL MONUMENTS

2001
E 16TH ST
BURLEY
208-678-2540

Serving Mini Cassia Since 1979

CHAMBER EVENTS

The Chamber is actively inviting everyone to come and join us in our activities. Check out our upcoming events and learn more about the Chamber's activities and plans.

JANUARY

The Celebration of Business Banquet

held third week in January. Honoring volunteers, chamber member of the year awards and community heroes.

Celebration of Business Banquet

February

The Salute to Agriculture Luncheon

From the fields to our tables, local farmers play an indispensable role in sustaining our environment, supporting local businesses and promoting food security. This event honors the hard work, innovation, and dedication of our local farmers who contribute to the growth of our local economy.

Salute to Agriculture

June

Mini-Cassia Scramble for Commerce.

Community event with 4-person team scramble includes a full day of fun on the golf course, building relationships and supporting your local Chamber. River's Edge Golf Course. Burley. Information: 208-679-4793



September

Development Training Seminar offers community members to learn about cultivating leadership skills and community involvement. Speakers cover many different topics from customer service, recruiting techniques, communication, innovative thinking, and much more.

MONTHLY

Leadership Program offers 8-month program (Sept. through May) with series of one-day seminars that provide participants with insights into the community's inner workings and build leadership skills. Participants also have the chance to network with local business and community leaders and learn from experts in various fields. Contact Mini-Cassia Chamber of Commerce for details on the application process. One week camp.

Luncheons

Networking benefit lunch for members of the Mini-Cassia Chamber of Commerce featuring a different speaker each time. Held in various locations on the second Thursday of the month in both Cassia & Minidoka counties. Join us!

Ambassador Monthly Luncheons

Ambassador's monthly luncheons and meetings are held at noon on the second Wednesday of every month. Come be an ambassador for the Mini-Cassia Chamber of Commerce.



ABOUT US

WHY SHOULD YOU JOIN THE CHAMBER?

The best way to spread the word about your business is by making connections. Whether you're new to the local community or a veteran company that has been around for decades, your reputation grows as you engage in other influential entities within your community. Being a part of the Chamber helps you grow your professional network, help the community, and build life-long friendships.

Consider these statistics from *American Business Magazine*:

- 44% of consumers are more likely to think favorably of businesses who are members of their local chamber
- 63% of consumers are more likely to buy products or services from businesses who are members of their local chamber
- Consumers view chamber of commerce members as trustworthy and are 12% more likely to believe their products or services are better than competitors

WE SERVE 13 COMMUNITIES IN TWO COUNTIES

Acequia • Albion • Almo • Burley • Declo • Elba
Heyburn • Malta • Minidoka • Oakley • Paul • Rupert • Sublett

OUR VISION

To create a vibrant, thriving and successful business community in the Mini-Cassia area.

OUR MISSION

To advocate for and on behalf of common business interests. To encourage and promote business development. To communicate business information, ideas and interests.

Yearly Membership Investment

CHAMBER MEMBER BENEFITS	Members with 20+ employees may not join at these levels.			Members with ANY number of employees may join at these levels.		
	GROW \$350	CULTIVATE \$450	YIELD \$650	THRIVE \$850	HARVEST \$1,250	TRUSTEE \$1,500
Member Recognition Plaque	✓	✓	✓	✓	✓	✓
Business Referral Service	✓	✓	✓	✓	✓	✓
Monday Motivator e-Newsletter	✓	✓	✓	✓	✓	✓
Ribbon Cutting / Grand Opening/Open House	✓	✓	✓	✓	✓	✓
Chamber Business After Hours Events	✓	✓	✓	✓	✓	✓
Events on Chamber Online Calendar	✓	✓	✓	✓	✓	✓
Chamber Committee Membership Eligibility	✓	✓	✓	✓	✓	✓
Chamber Board of Directors Eligibility	✓	✓	✓	✓	✓	✓
Chamber Website Landing Page	✓	✓	✓	✓	✓	✓
Chamber Website Directory Listing	ONE LISTING	UP TO 2	UP TO 3	UP TO 4	UP TO 5	UNLIMITED
Destination So Ida Magazine Directory Listing	ONE LISTING	UP TO 2	UP TO 3	UP TO 4	UP TO 5	UNLIMITED
Idaho Chamber Alliance (ICA)	✓	✓	✓	✓	✓	✓
U.S. Chamber Federation Partnership	✓	✓	✓	✓	✓	✓
Leadership MC Tuition	\$520	\$500	\$480	\$460	\$400	\$350
Use of Industry Conference Room*	1/Year	1/Year	1/Semi-Annual	FREE	FREE	FREE
Use of Riverside Conference Room*	1/Semi-Annual	1/Semi-Annual	1/Quarter	FREE	FREE	FREE
Certificate of Origin Stamp (each)	\$60	\$50	\$40	\$30	\$20	UNLIMITED
Member Monthly Luncheon	\$15/person	1 Person	1 Person	2 People	3 People	4 People
Community Marketing Support	✓	✓	✓	✓	✓	✓
Southern Idaho Tourism Membership (SIT)	✓	✓	✓	✓	✓	✓
Business Materials in Relocation Packets		✓	✓	✓	✓	✓
Relocation Packets Available Upon Request		✓	✓	✓	✓	✓
MC Chamber Cash Program Participant		✓	✓	✓	✓	✓
Job Listing Submissions			✓	✓	✓	✓
Mailing List of Chamber Members			✓	✓	✓	✓
Annual Chamber Banquet Tickets				2	4	6
Priority Website Placement of Business						✓
Preferred Job Postings Placement						✓
Photo of Business In Trustee Conference Room at Mini-Cassia Chamber of Commerce						✓

Mini-Cassia Business Directory

ACCOUNTING

Condle, Stoker & Associates, CPA's
506 6th St. Rupert, ID 83350
(208) 436-9911

Garald Price & Associates, P.A.
2058 Overland Ave. Burley, ID 83318
(208) 878-9000

**Phillips Oakes Goodwin
Crane & Co, PLLC**
1710 Overland Ave. Burley, ID 83318
(208) 878-7000

**Phillips Oakes Goodwin
Crane & Co, PLLC**
620 5th St. Rupert, ID 83350
(208) 436-5607

**Poulsen, VanLeuven
& Catmull, CPA's**
1408 Pomerelle Ave. Burley, ID 83318
(208) 678-1300

Westfall & Westfall, CPA's
1329 Albion Ave. Burley, ID 83318
(208) 878-0466

AESTHETICS

Resilience Medical Spa
617 5th St. Rupert, ID 83350
(208) 670-3393

AGRICULTURE

Ag West Farm Credit
1408 Pomerelle Ave. Suite B,
Burley, ID 83318
(208) 678-6650

C-A-L Ranch
226 N. Overland Ave. Burley, ID 83318
(208) 678-7610

Gibby Group
134 E. Hwy 81 Burley, ID 83318
(208) 654-2733

High Desert Milk
1033 Idaho Ave. Burley, ID 83318
(208) 878-6455

Intermountain New Holland
1042 Hwy 30 N. Heyburn, ID 83336
(208) 733-8687

K & R Rental & Sales
256 A-S. 600 W. Heyburn, ID 83336
(208) 678-3122

Kelley Bean Co.
106 Read Ave. Rupert, ID 83350
(208) 436-3611

Mart Produce
70 N. 100 E. Rupert, ID 83350
(208) 436-0611

**Mini-Cassia Soil & Water
Conservation Districts**
85 East Baseline Rd. Rupert, ID 83350
(208) 436-4202

Minidoka County Fair Board
85 E. Baseline Rd. Rupert, ID 83350
(208) 436-9748

Pickett Ranch & Sheep Co.
568 W. 1650 S. Oakley, ID 83346
(208) 862-3482

Snake River Farmers' Association
406 W. 400 S. Heyburn, ID 83336
(208) 436-9737

Tessengerlo Kerley, Inc.
480 S. 260 W. Burley, ID 83318
(208) 678-9565

Western Seeds
1631 Highway 30, Heyburn, ID 83336
(208) 678-2268

Yankum Ropes
915 Overland Ave. Suite A
Burley, ID 83318
(208) 572-0257

ALARM SYSTEMS

System Tech, Inc.
2854 S. Featherly Way, Boise, ID 83709
(208) 362-6493

ALTERATIONS

Babbels Cleaners, Inc.
649 N. Overland Ave. Burley, ID 83318
(208) 733-2258

AMERICAN FOOD

AC Drive-In
601 E. Main St. Burley, ID 83318
(208) 678-0141

Burger King (HB LLC)
114 W. 5th St. N. Burley, ID 83318
(208) 678-7779

Burgers Etc.
700 Overland Ave. Burley, ID 83318
(208) 678-4189

Burgers Etc.
124 S. Oneida St. Rupert, ID 83350
(208) 436-0600

Denny's
611 N. Overland Ave. Burley, ID 83318
(208) 678-8786

McDonald's of Burley
394 N. Overland Ave. Burley, ID 83318
(208) 678-2230

Morey's Steakhouse
219 E. 3rd St. Burley, ID 83318
(208) 679-1166

Perkins Family Restaurant
800 N. Overland Ave. Burley, ID 83318
(208) 678-1304

Wayside Cafe
325 S. Hwy 24, Rupert, ID 83350
(208) 436-4800

ANIMALS

Burley Veterinary Hospital
2869 Overland Ave. Burley, ID 83318
(208) 678-5509

Doggy DoJo
507 Highway 27, Burley, ID 83318
(208) 670-8161

Four Paws Bed and Bath
370 W. 200 S. Rupert, ID 83350
(208) 438-4444

Performix Nutrition Systems
235 W. 71 Lane S. Rupert, ID 83350
(208) 436-1724

Pickett Ranch & Sheep Co.
568 W. 1650 S. Oakley, ID 83346
(208) 862-3482

APPLIANCE

Redder's Showkase
2611 Overland Ave. Burley, ID 83318
(208) 878-2000

ATHLETIC TRAINING

Fan Zone Athletics
1238 Overland Ave. Burley, ID 83318
(208) 530-4446

ATTORNEY

**Parsons, Loveland, Shirley
& Miller LLP**
137 W. 13th St. Burley, ID 83318
(208) 878-8382

AUDIOLOGY

**Mt. Harrison Audiology
& Hearing Aid LLC**
1218 9th St. Unit #2, Rupert, ID 83350
(208) 312-0957

AUTO

Barclay Mechanical / Crane Service
490 W. 100 S. Hwy 25, Paul, ID 83347
(208) 438-8108

Budget Truck Sales
251 Nevada Ave. Heyburn, ID 83336
(208) 878-8874

Gaylon's Auto Body
709 2nd St. S. Rupert, ID 83350
(208) 436-9716

Greer Truck & Trailer Parts
128 S. 600 W. Paul, ID 83347
(208) 438-7278

Kim Hansen Chevrolet
1221 W. Main St. Burley, ID 83318
(208) 678-2221

Lease End LLC
411 Overland Burley, ID 83318
(844) 902-2842

Les Schwab Tires - Burley
2555 S. Overland Ave. Burley, ID 83318
(208) 678-4400

NAPA Auto Parts
413 F St. Rupert, ID 83350
(208) 436-3747

NAPA Auto Parts
501 Overland Ave. Burley, ID 83318
(208) 678-8311

**Novus Auto Glass/Durutec
Auto Accessories**
659 Overland Ave. Burley, ID 83318
(208) 678-3309

Tommy's Express
450 Overland Ave. Burley, ID 83318
(208) 878-1020

Yankum Ropes

915 Overland Ave. Suite A
Burley, ID 83318
(208) 572-0257

Young Automotive Group

259 Overland Ave. Burley, ID 83318
(208) 647-0503

AUTO LEASE SOLUTIONS**Lease End LLC**

411 Overland Burley, ID 83318
(844) 902-2842

BAKERY**Fizz Farm**

1333 E. Main St. Burley, ID 83318
(208) 647-1075

Jil's Flower Haus

1541 J St. Heyburn, ID 83336
(208) 678-2131

BANKING**Ag West Farm Credit**

1408 Pomerelle Ave. Suite B,
Burley, ID 83318
(208) 678-6650

The Bank of Commerce

P.O. Box 1702 Idaho Falls, ID 83403
(208) 670-4105

Connections Credit Union

510 21st St. Heyburn, ID 83336
(208) 677-4519

D.L. Evans Bank Albion

200 W. Market St. Albion, ID 83311
(208) 673-5301

D.L. Evans Bank North Burley

397 N. Overland Ave. Burley, ID 83318
(208) 678-9076

D.L. Evans Bank Paul

108 Ellis St. Paul, ID 83347
(208) 438-8400

D.L. Evans Bank Rupert

318 S. Oneida St. Rupert, ID 83350
(208) 436-2265

D.L. Evans Bank South Overland

2281 Overland Ave. Burley, ID 83318
(208) 678-6000

First Federal - Burley

2059 Overland Ave. Burley, ID 83318
(208) 878-8302

First Federal - East Main

1095 E. Main St. Burley, ID 83318
(208) 878-9900

First Federal - Rupert

701 7th St. Rupert, ID 83350
(208) 436-0505

Idaho Central Credit Union

110 Overland Ave. Burley, ID 83318
(208) 678-2046

KeyBank

1301 Overland Ave. Burley, ID 83318
(208) 677-8630

Lookout Federal Credit Union

1041 E. Main St. Burley, ID 83318
(208) 878-7100

Zions Bank

102 W. Main St. Burley, ID 83318
(208) 572-3291

BAR**The Boathouse in Burley**

197 W. Hwy 30, Burley, ID 83318
(208) 431-8218

Drift Inn

545 F St. Rupert, ID 83350
(208) 436-1300

Morey's Steakhouse

219 E. 3rd St. Burley, ID 83318
(208) 679-1166

Portside Pizza and Pub

197 W. Hwy 30, Burley, ID 83318
(208) 431-8274

Rough Riders Tavern

515 5th Street Rupert, ID 83350
(208) 434-2001

Spud Cellar

800 N. Overland Ave. Burley, ID 83318
(208) 678-3500

Wingers Alehouse

769 North Overland Burley, ID 83318
(801) 935-0416

BIOFUEL PRODUCTION**Advanced Biofuels of Idaho**

1000 J St. Heyburn, ID 83336
(208) 593-3312

BOARDING HOUSE**Greystone Crossing**

1221 21st St. Heyburn, ID 83336
(208) 650-4979

BOWLING**Snake River Bowl**

725 Minidoka Ave. Burley, ID 83318
(208) 679-2695

BUILDING SUPPLIES**Starrs Ferry Building Supplies, Inc.**

20 S. 300 W. Burley, ID 83318
(208) 678-5562

BUSINESS FINANCIAL**Guild Mortgage Company**

1650 Overland Ave. Suite 3
Burley, ID 83318
(208) 831-2234

BUSINESS SERVICES**Business Plus**

P.O. Box 929 Twin Falls, ID 83303
(208) 539-6470

DEX Imaging

320 Jefferson Ave. Pocatello, ID 83202
(208) 233-2777

**Idaho Association of
Commerce and Industry**

816 W. Bannock St. Suite 5B
Boise, ID 83701
(208) 543-1049

Solv Group

1650 Overland Ave. #11,
Burley, ID 83318
(208) 678-3355

BUSINESS SUPPLIES**Burley Reminder**

1220 Albion Ave. Burley, ID 83318
(208) 878-2233

CANDLES**Smell Pretty Candles**

40 S. 600 W. Burley, ID 83318
(209) 814-6586

CAR DEALER**Goode Motor Ford**

1096 E. Main St. Burley, ID 83318
(208) 878-5611

Kim Hansen Chevrolet

1221 W. Main St. Burley, ID 83318
(208) 678-2221

Young Automotive Group

259 Overland Ave. Burley, ID 83318
(208) 647-0503

CAR WASH**360 Auto Center LLC**

517 2nd St. Rupert, ID 83350
(208) 436-9247

Hill Oil Co. & Car Wash

723 S. Oneida St. Hwy 24
Rupert, ID 83350
(208) 436-3148

Tommy's Express

450 Overland Ave. Burley, ID 83318
(208) 878-1020

CATERING**The Burley Inn & Convention Center**

800 N. Overland Ave. Burley, ID 83318
(208) 678-3501

Costa Vida

170 E. 5th Street N. Burley, ID 83318
(708) 572-7200

Drift Inn

545 F St. Rupert, ID 83350
(208) 436-1300

Edith's Cafe

144 E. Hwy 81, Burley, ID 83318
(208) 878-2248

Fizz Farm

1333 E. Main St. Burley, ID 83318
(208) 647-1075

Jersey Mike's - Burley

208 East 5th, Burley, ID 83318
(208) 650-4317

Morey's Steakhouse

219 E. 3rd St. Burley, ID 83318
(208) 679-1166

Stokes Market, Inc.

1310 Pomerelle Ave. Burley, ID 83318
(208) 678-0425

Top Notch Events

2500 Washington Ave. Burley, ID 83318
(208) 878-2248

CHURCH**First Presbyterian Church**

2100 Burton Ave. Burley, ID 83318
(208) 678-5131

Grace Church

100 Meridian Rd. Rupert, ID 83350
(208) 431-8666

Rupert United Methodist Church

605 H St. Rupert, ID 83350
(208) 436-3354

St. Nicholas Catholic School

806 F St. Rupert, ID 83350
(208) 436-6320

Trinity Evangelical Lutheran Church

909 8th St. Rupert, ID 83350
(208) 436-3413

CLEANING**C.K. Window Cleaning LLC**

595 West Sunnyslope Paul, ID 83347
(208) 312-1240

Elite Restoration

495 E. 5th St. Burley, ID 83318
(208) 677-3473

Sweepco, Inc.

165 W. 200 S. Burley, ID 83318
(208) 670-4298

COFFEE

OnPoint Coffee Roasters

294 S. 734 Ln W. Heyburn, ID 83336
(208) 260-1600

COLLEGES

College of Southern Idaho, Mini-Cassia

1600 Parke Ave. Burley, ID 83318
(208) 678-1400

COMMERCIAL PROPERTY

Colliers

205 Shoshone St. Suite 201
Twin Falls, ID 83301
(208) 345-9000

TOK Commercial Real Estate

195 River Vista Place
Twin Falls, ID 83301
(208) 944-9694

COMMERCIAL REAL ESTATE

Colliers

205 Shoshone St. Suite 201
Twin Falls, ID 83301
(208) 345-9000

TOK Commercial Real Estate

195 River Vista Place
Twin Falls, ID 83301
(208) 944-9694

COMMUNICATIONS

ATC Communications

225 W. North St. Albion, ID 83311
(208) 673-5335

Dalton Direct Digital

122 N. Meridian Rupert, ID 83350
(909) 736-9868

Harris Electronics and Communication (HEC)

1287 W. Main St. Burley, ID 83318
(208) 678-8789

KMVT

1100 Blue Lakes Blvd. N.
Twin Falls, ID 83301
(208) 733-1100

Lee Family Broadcasting

120 S. 300 W. Rupert, ID
83350 (208) 436-4757

Project Mutual Telephone

507 G St. Rupert, ID 83350
(208) 436-7151

KSAW Idaho TV News 6

690 Blue Lakes Blvd. N.
Twin Falls, ID 83301
(208) 734-6022

Project Mutual Telephone

1458 Overland Ave. Burley, ID 83318
(208) 878-7151

The Voice & Times-News Amplified Digital Agency

Serving Mini-Cassia Area
(208) 735-3208

COMMUNITY AND ECONOMIC DEVELOPMENT

Frontier Community Resources

202 Falls Ave. Twin Falls, ID 83301
(208) 732-5727

CONSTRUCTION

ABC Seamless Siding Super Store

445 S. Liberty Lane Suite 2
Jerome, ID 83338
(208) 678-9598

Doss Homes

2159 Overland Ave. Burley, ID 83318
(208) 691-9920

Elite Restoration

495 E. 5th St. Burley, ID 83318
(208) 677-3473

Gary Jones Construction

247 W. HWY 30, Burley, ID 83318
(208) 678-1118

Koyle's Classic Construction

69 E. 200 S. Burley, ID 83318
(208) 678-2846

Omega Roofing LLC

1305 D St. Rupert, ID 83350
(208) 243-8016

Streamline Precision

120 S. 100 W. Burley, ID 83318
(208) 678-9204

CONSULTING

Keller Williams Sun Valley Southern Idaho

515 5th St. Rupert, ID 83350
(208) 431-4584

COPIERS

Burley Reminder

1220 Albion Ave. Burley, ID 83318
(208) 878-2233

DEX Imaging

320 Jefferson Ave. Pocatello, ID 83202
(208) 233-2777

Integrated Technologies

393 Eastland Drive S.
Twin Falls, ID 83301
(208) 734-6181

COSMETOLOGY

Cosmetology School of Arts and Science

485 E. 5th St. N. Burley, ID 83318
(208) 678-4454

DENTAL

All Smiles Dental

515 E. 5th St. N. Burley, ID 83318
(208) 679-3000

Burley Kids Dental

859 Oakley Ave. Burley, ID 83318
(208) 677-4531

Family Health Services

402 6th St. Rupert, ID 83350
(208) 650-7941

Smiles 4 kids

1408 Pomerelle Ave. Suite D,
Burley, ID 83318
(208) 678-7415

DRY CLEANING

Babbels Cleaners, Inc.

1544 Overland Ave. Burley, ID 83318
(208) 733-2258

EDUCATION

Children's Museum of The Magic Valley

P.O. Box 2139, Twin Falls, ID 83301
(208) 536-3455

Rise Up and Sing Inc.

981 N. 800 E. Rupert, ID 83350
(208) 431-4665

Top Gun Truck Driving Academy

520 E. 5th Street, Burley, ID 83318
(208) 358-3103

ELECTRICAL

Columbia Electric Supply

23 E. Ellis St. Paul, ID 83347
(208) 878-9040

Electrical Wholesale Supply Co. Inc.

3260 Oregon Ave.
Heyburn, ID 83336
(208) 734-2882

Five Star Electric, Inc.

4 N 1050 E Declo, ID 83323
(208) 312-5325

Ramsey Heating & Electric, Inc.

2600 Overland Ave. Burley, ID 83318
(208) 678-0459

United Electric Co-op, Inc.

1330 21st St. Heyburn, ID 83336
(208) 679-2222

EMBROIDERY

Accurate Imprints

504 6th St. Rupert, ID 83350
(208) 434-2757

EMPLOYMENT SERVICES

American Staffing

1711 Overland Ave. Suite B
Burley, ID 83318
(208) 678-9445

BBSI

1502 Locust St. N. Suite 500A,
Twin Falls, ID 83301
(208) 735-5002

Gem State Staffing

641 N Overland Ave. Burley, ID 83318
(208) 677-9999

Idaho Division of Vocational Rehabilitation

127 W. 5th St. Suite B, Burley, ID 83318
(208) 678-3838

Personnel Plus, Inc.

735 Overland Ave. Burley, ID 83318
(208) 678-4040

Snake River Farmers' Association

406 W. 400 S. Heyburn, ID 83336
(208) 436-9737

ENTERTAINMENT

Arcadia Burley LLC

759 Overland Ave. Burley, ID 83318
(208) 654-1200

Burley Idaho Regatta

1941 Grandview Lane Burley, ID 83318
760-831-2325

Cassia Festival of Trees

P.O. Box 726, Burley, ID 83338

Century Cinema 5

464 E. 5th St. Burley, ID 83318
(208) 678-3131

Mt. Harrison Heritage Foundation

111 W. 15th St. Burley, ID 83318
(208) 878-6801

Puttin' Around & Stuff

560 E. 5th St. N. Burley, ID 83318
(208) 670-1206

Rise Up and Sing Inc.
981 N. 800 E. Rupert, ID 83350
(208) 431-4665

EQUIPMENT DEALER

Intermountain New Holland
1042 Hwy 30 N. Heyburn, ID 83336
(208) 733-8687

EQUIPMENT RENTALS

K & R Rental & Sales
256 A-S. 600 W. Heyburn, ID 83336
(208) 678-3122

ESTHETICIAN

Roots Salon & Plants
1518 Overland Burley, ID 83318
(385) 381-1398

EVENT CENTER

Albion Campus Retreat
437 W. North St. Albion, ID 83311
(208) 312-8484

Arcadia Burley LLC
759 Overland Ave. Burley, ID 83318
(208) 654-1200

The Boathouse in Burley
197 W. Hwy 30, Burley, ID 83318
(208) 431-8218

Greystone Crossing
1221 21st St., Heyburn, ID 83336
(208) 650-4979

Hampton Inn Burley
560 Hampton Dr. Burley, ID 83318
(208) 878-7040

The Historic Wilson Theatre
610 Fremont Ave. Rupert, ID 83350
(208) 436-2787

Top Notch Events
2500 Washington Ave. Burley, ID 83318
(208) 878-2248

EVENTS

Cassia County Fair & Rodeo
1101 Elba Ave. Burley, ID 83318
(208) 678-9150

Portside Pizza and Pub
197 W. Hwy 30, Burley, ID 83318
(208) 431-8274

The Snow Shoppe
113 E. Ellis St. Paul, ID 83347
(208) 431-0899

EXERCISE

Burley Physical Therapy and Rehabilitation
1263 Bennett Ave. #2, Burley, ID 83318
(208) 678-1191

Impact Athletic
1150 E. 16th St. Burley, ID 83318
(208) 678-5011

Pomerelle Mountain Resort
961 E. Howell Canyon Rd.
Albion, ID 83311
(208) 673-5599

FARM AND RANCH

Ag West Farm Credit
1408 Pomerelle Ave. Suite B
Burley, ID 83318
(208) 678-6650

C-A-L Ranch
226 N. Overland Ave. Burley, ID 83318
(208) 678-7610

Flying S Title & Escrow
235 E. 3rd St. N. Suite. 1
Burley, ID 83318
(208) 878-4772

High Desert Milk
1033 Idaho Ave. Burley, ID 83318
(208) 878-6455

Intermountain New Holland
1042 Hwy 30 N. Heyburn, ID 83336
(208) 733-8687

K & R Rental & Sales
256 A-S. 600 W. Heyburn, ID 83336
(208) 678-3122

Kelley Bean Co.
106 Read Ave. Rupert, ID 83350
(208) 436-3611

Mart Produce
70 N. 100 E. Rupert, ID 83350
(208) 436-0611

Minidoka County Fair Board
85 E. Baseline Rd. Rupert, ID 83350
(208) 436-9748

Performix Nutrition Systems
235 W. 71 Lane S. Rupert, ID 83350
(208) 436-1724

Pickett Ranch & Sheep Co.
568 W. 1650 S. Oakley, ID 83346
(208) 862-3482

Snake River Farmers' Association
406 W. 400 S. Heyburn, ID 83336
(208) 436-9737

Tessenderlo Kerley, Inc.
480 S. 260 W. Burley, ID 83318
(208) 678-9565

Western Seeds
1631 Highway 30, Heyburn, ID 83336
(208) 678-2268

FAST FOOD

AC Drive-In
601 E. Main St. Burley, ID 83318
(208) 678-0141

Bobcat Corner
1337 W. Main St. Burley, ID 83318
(208) 678-1231

Burger King (HB LLC)
114 W. 5th St. N. Burley, ID 83318
(208) 678-7779

Burgers Etc.
700 Overland Ave. Burley, ID 83318
(208) 678-4189

Burgers Etc.
124 S. Oneida St. Rupert, ID 83350
(208) 436-0600

McDonald's of Burley
394 N. Overland Ave. Burley, ID 83318
(208) 678-2230

FERTILIZER/CHEMICAL

Tessenderlo Kerley, Inc.
480 S. 260 W. Burley, ID
83318 (208) 678-9565

FIBER OPTICS

Fybercom LLC
3780 N. Yellowstone Hwy,
Idaho Falls, ID 83401
(208) 403-0505

FINANCE

Ag West Farm Credit
1408 Pomerelle Ave. Suite B,
Burley, ID 83318
(208) 678-6650

Avera Capital
1526 Overland Ave. Burley, ID 83318
(208) 678-0420

The Bank of Commerce
P.O. Box 1702 Idaho Falls, ID 83403
(208) 670-4105

Brahma Lending
915 Overland Ave. Suite A
Burley, ID 83318
(208) 650-7030

D.L. Evans Bank Albion
200 W. Market St. Albion, ID 83311
(208) 673-5301

D.L. Evans Bank North Burley
397 N. Overland Ave. Burley, ID 83318
(208) 678-9076

D.L. Evans Bank Paul
108 Ellis St. Paul, ID 83347
(208) 438-8400

D.L. Evans Bank Rupert
318 S. Oneida St. Rupert, ID 83350
(208) 436-2265

D.L. Evans Bank South Overland
2281 Overland Ave. Burley, ID 83318
(208) 678-6000

First Federal - Burley
2059 Overland Ave. Burley, ID 83318
(208) 878-8302

First Federal - East Main
1095 E. Main St. Burley, ID 83318
(208) 878-9900

First Federal - Rupert
701 7th St. Rupert, ID 83350
(208) 436-0505

Frontier Community Resources
202 Falls Ave. Twin Falls, ID 83301
(208) 732-5727

Idaho Housing & Finance
565 W. Myrtle Boise, ID 83707
(208) 331-4743

KeyBank
1301 Overland Ave. Burley, ID 83318
(208) 677-8630

Lookout Federal Credit Union
1041 E. Main St. Burley, ID 83318
(208) 878-7100

Zions Bank
102 W. Main St. Burley, ID 83318
(208) 572-3291

FINANCIAL INVESTMENTS

Justin Persell-Edward Jones
210 East Ellis St. Paul, ID 83347-5009
(208) 572-9172

FINANCIAL PLANNING

Justin Persell-Edward Jones
210 East Ellis St. Paul, ID 83347-5009
(208) 572-9172

FLOWER SHOP

Hello Flowers
508 6th St. Rupert, ID 83350
(208) 436-5335

Mary Lou's Greenhouse & Flower Cart
1550 Oriental Ave. Burley, ID 83313
(208) 878-3566

FOOD PRODUCTION

Americold Logistics
280 W. Hwy 30, Burley, ID 83318
(208) 677-3000

Bare Beans Co. LLC

114 Bare Beans Way Rupert, ID 83350
(208) 436-2326

Dot Foods

1541 W. 27th St. Burley, ID 83318
(208) 678-6063

Gibby Group

134 E. Hwy 81, Burley, ID 83318
(208) 654-2733

Idahoan Foods LLC

823 S. Oneida St. Rupert, ID 83350
(208) 436-4104

Mart Produce

70 N. 100 E. Rupert, ID 83350
(208) 436-0611

McCain Foods USA, Inc.

218 W. Hwy 30, Burley, ID 83318
(208) 678-9431

OnPoint Coffee Roasters

294 S. 734 Ln W. Heyburn, ID 83336
(208) 260-1600

FOOD VENDOR

Jersey Mike's - Burley

208 East 5th, Burley, ID 83318
(208) 650-4317

OnPoint Coffee Roasters

294 S. 734 Ln W. Heyburn, ID 83336
(208) 260-1600

RollJoy Cinnamon Rolls

1322 Meadow Lane
Rupert, ID 83350
(208) 572-0322

FORMAL WEAR

Southern Idaho Formal Wear

122 N. Meridian Rupert, ID 83350
(208) 431-6325

FUEL/OIL

Dickson Oil

602 S. 2nd St. Rupert, ID 83350
(208) 436-6609

Hill Oil Co. & Car Wash

723 S. Oneida St. Hwy 24
Rupert, ID 83350
(208) 436-3148

Intermountain Gas Company

451 Alan Dr. Jerome, ID 83338
(208) 737-6300

Unit 54

174 E. 27th St. Burley, ID 83318
(208) 678-1101

FURNITURE

Lee's Furniture

459 Overland Ave. Burley, ID 83318
(208) 878-2341

Redder's Showkase

2611 Overland Ave. Burley, ID 83318
(208) 878-2000

Skaggs Furniture

149 E. 23rd Dr. Burley, ID 83318
(208) 878-5100

Wilson Bates

246 E. 5th St. N. Burley, ID 83318
(208) 678-1133

GAS STATION

Adams Petroleum

210 E. 27th St. Burley, ID 83318
(208) 678-1101

Bobcat Corner

1337 W. Main St. Burley, ID 83318
(208) 678-1231

Dickson Oil

602 S. 2nd St. Rupert, ID 83350
(208) 436-6609

Unit 54

174 E. 27th St. Burley, ID 83318
(208) 678-1101

GIFT SHOP

Hello Flowers

508 6th St. Rupert, ID 83350
(208) 436-5335

Mini Cassia Chamber of Commerce

1177 7th St. Heyburn, ID, 83336
(208) 679-4793

GLASS

BURLY Glass

1029 Overland Ave. Burley, ID 83318
(208) 678-1459

Novus Auto Glass/ Durutec Auto Accessories

659 Overland Ave. Burley, ID 83318
(208) 678-3309

Nu-Vu Glass

1601 Overland Ave. Burley, ID 83318
(208) 678-2229

GOVERNMENT

Congressman Mike Simpson

802 Bannock St. Boise, ID 83702
(208) 334-1953

Minidoka County

715 G St. Rupert, ID 83350
(208) 436-7111

U.S. Senator James E. Risch

1411 Falls Ave. Suite 20
Twin Falls, ID 83301
(208) 734-6780

U.S. Senator Mike Crapo

410 Memorial Dr. Idaho Falls, ID 83402
(208) 522-9779

GREEN HOUSE

Mary Lou's Greenhouse & Flower Cart

1550 Oriental Ave. Burley, ID 83313
(208) 878-3566

GROCERY STORE

Stokes Market, Inc.

1310 Pomerelle Ave. Burley, ID 83318
(208) 678-0425

HAIR SALON

Roots Salon & Plants

1518 Overland Burley, ID 83318
(385) 381-1398

HARDWARE

Starrs Ferry Building Supplies, Inc.

20 S. 300 W. Burley, ID 83318
(208) 678-5562

Haun's Hardware

23 E. Ellis St. Paul, ID 83347
(208) 438-5544

HEALTH & FITNESS

Burley Physical Therapy and Rehabilitation

1263 Bennett Ave. #2, Burley, ID 83318
(208) 678-1191

HEALTHCARE

Burley Physical Therapy and Rehabilitation

1263 Bennett Ave. #2, Burley, ID 83318
(208) 678-1191

Cassia Family Medicine

1501 Hiland Ave. Suite A
Burley, ID 83318
(208) 677-6091

Cassia Family Practice and WorkMED

1501 Hiland Ave. Suite F
Burley, ID 83318
(208) 677-6070

Cassia General Surgery Clinic

1501 Hiland Ave. Suite H
Burley, ID 83318
(208) 677-6266

Cassia Internal Medicine Clinic

1501 Hiland Ave. Burley, ID 83318
(208) 677-6212

Cassia Orthopedic Clinic

1501 Hiland Ave. Suite C
Burley, ID 83318
(208) 677-6080

Cassia Rehabilitation Services

1501 Hiland Ave. Burley, ID 83318
(208) 677-6530

Family Practice with Obstetrics

1501 Hiland Ave. Burley, ID 83318
(208) 678-2283

Family Vision & Eye Care

714 G St. Rupert, ID 83350
(208) 436-3455

Horizon Home Health & Hospice

1411 Falls Ave E. Suite 615
Twin Falls, ID 83301
(208) 733-2840

Intermountain Cassia Regional Hospital

1501 Hiland Ave. Burley, ID 83318
(208) 678-4444

Life Flight Network

1050 Airport Way Burley, ID 83318
(208) 869-0708

Minidoka Memorial Hospital

1224 8th St. Rupert, ID 83350
(208) 436-0481

Mt. Harrison Audiology & Hearing Aid LLC

1218 9th St. Unit #2, Rupert, ID 83350
(208) 312-0957

Physicians Immediate Care Center

1252 Bennett Ave Ste B
Burley, ID 83318
(208) 647-0656

Pomerelle Place

1301 Bennett Ave. Burley, ID 83318
(208) 677-8212

Renaissance Ranch

1275 N. 400 E. Building F
Rupert, ID 83350
(208) 271-4363

Riverview Eye Specialists

1320 Bennett Ave. Burley, ID 83318
(208) 678-2173

River Valley Orthodontics

1365 E. Main Street Burley, ID 83318
(208) 678-3265

South Central Public Health District

485 22nd St. Heyburn, ID 83336
(208) 678-8221

Spring Creek Women's Healthcare
1408 Pomerelle Suite H
Burley, ID 83318
(208) 677-6170

Urgent Care of Idaho - Burley Clinic
382 N. Overland Ave. Burley, ID 83318
(208) 678-6996

HIGH SPEED INTERNET

Fybercom LLC
3780 N. Yellowstone Hwy.
Idaho Falls, ID 83401
(208) 403-0505

Sparklight
261 Eastland Dr. Twin Falls, ID 83301
(208) 733-6877

TDS Fiber
240 Eastland Dr. Unit 1-Suite 6
Twin Falls, ID 83301
(208) 816-9188

HOME CARE

Runix Home Services
216 Countryside Dr. Rupert, ID 83350
(208) 219-5001

HOME CONSTRUCTION

First Federal - East Main
1095 E. Main St. Burley, ID 83318
(208) 878-9900

Flying S Title & Escrow
235 E. 3rd St. N. Suite. 1
Burley, ID 83318
(208) 878-4772

**Keller Williams Sun Valley
Southern Idaho**
515 5th St. Rupert, ID 83350
(208) 431-4584

MRC Baths
915 Oakley Ave. Burley, ID 83318
(208) 430-5505

Nu-Vu Glass
1601 Overland Ave. Burley, ID 83318
(208) 678-2229

Ramsey Heating & Electric, Inc.
2600 Overland Ave. Burley, ID 83318
(208) 678-0459

HOME HEALTH CARE

Horizon Home Health & Hospice
1411 Falls Ave E. Suite 615
Twin Falls, ID 83301
(208) 733-2840

Mini-Cassia Hearts 4 Seniors
2450 Overland Ave. Burley, ID 83318
(208) 312-5715

HOME REMODEL

MRC Baths
915 Oakley Ave. Burley, ID 83318
(208) 430-5505

HOSPICE

Horizon Home Health & Hospice
1411 Falls Ave E. Suite 615
Twin Falls, ID 83301
(208) 733-2840

HOSPITAL

**Intermountain Cassia
Regional Hospital**
1501 Hiland Ave. Burley, ID 83318
(208) 678-4444

Minidoka Memorial Hospital
1224 8th St. Rupert, ID 83350
(208) 436-0481

HOT SPRINGS

Durfee Hot Springs
2798 Elba-Almo Rd. Almo, ID 83312
(208) 824-5701

HOTEL

**The Burley Inn &
Convention Center**
800 N. Overland Ave. Burley, ID 83318
(208) 678-3501

Fairfield Inn & Suites Marriot
230 W. 7th St. N. Burley, ID 83318
(208) 677-5000

Greystone Crossing
1221 21st St. Heyburn, ID 83336
(208) 650-4979

Hampton Inn Burley
560 Hampton Dr. Burley, ID 83318
(208) 878-7040

**Holiday Inn Express
& Suites Burley**
801 N. Overland Dr. Burley, ID 83318
(208) 678-0885

HOTEL HOSPITALITY

**Holiday Inn Express
& Suites Burley**
801 N. Overland Dr. Burley, ID 83318
(208) 678-0885

HOUSING

Greystone Crossing
1221 21st St. Heyburn, ID 83336
(208) 650-4979

HUMAN RESOURCES

BBSI
1502 Locust St. N. Suite 500A
Twin Falls, ID 83301
(208) 735-5002

Gem State Staffing
641 N Overland Ave. Burley, ID 83318
(208) 677-9999

Personnel Plus, Inc.
735 Overland Ave. Burley, ID 83318
(208) 678-4040

**Idaho Division of
Vocational Rehabilitation**
127 W. 5th St. Suite B, Burley, ID 83318
(208) 678-3838

HVAC

Element Heating and Cooling
504 E. Main St. Burley, ID 83318
(208) 647-0652

Mountainland Supply
839 Albion Ave. Burley, ID 83318
(208) 670-6200

INSURANCE

Blue Cross of Idaho
428 Cheney Dr. W. Suite. 101
Twin Falls, ID 83301
(208) 733-7258

Cameron & Seamons, Inc.
906 S. Oneida Rupert, ID 83350
(208) 436-4424

Darby Hawkes Farmers Insurance
1711 Overland Ave. Burley, ID 83318
(208) 678-4022

Hruza Insurance Agency
723 S. 3rd St. Rupert, ID 83350
(208) 436-4420

Jon Searle Insurance
1711 Overland Ave. Burley, ID 83318
(208) 678-4022

Magic Valley FIG Insurance
629 Fremont St. Rupert, ID 83350
(208) 436-4141

**Rachel Hansen - Farm Bureau
Insurance**
153 West Hwy 30 Burley, ID 83318
(208) 678-1665

**Starley-Leavitt Insurance
Agency, Inc.**
1701 Overland Ave. Burley, ID 83318
(208) 678-9063

Wrangler Insurance, Inc.
111 E. Ellis Paul, ID 83347
(208) 436-9026

INVESTMENTS

Hruza Insurance Agency
723 S. 3rd St. Rupert, ID 83350
(208) 436-4420

**Keller Williams Sun Valley
Southern Idaho**
515 5th St. Rupert, ID 83350
(208) 431-4584

IRRIGATION

Butte Irrigation, Inc.
116 S. 600 W. Paul, ID 83347
(208) 438-8103

LANDSCAPING

**Kimberly Nurseries Landscape
& Irrigation**
2862 Addison Ave. E.
Twin Falls, ID 83301
(208) 733-2717

Platinum Landscaping & Dirtworx
80 South 350 West Burley, ID 83318
(208) 219-1869

RPB Excavation & Landscaping
1014 S. Highway 77
Albion, ID 83311
(208) 260-2329

Sweepco, Inc.
165 W. 200 S. Burley, ID 83318
(208) 670-4298

LASER ENGRAVING

Accurate Imprints
504 6th St. Rupert, ID 83350
(208) 434-2757

Speedcraft Printing & Awards
1337 Albion Ave. Burley, ID 83318
(208) 678-0151

LENDING

Brahma Lending
915 Overland Ave. Suite A
Burley, ID 83318
(208) 650-7030



**Minidoka County
Historical Society
Museum**

99 E. Baseline Rd., Rupert, ID
Tues—Fri 10am—3pm

208-436-0336

minidokam@outlook.com • museum-mchs.org

First Federal - East Main
1095 E. Main St. Burley, ID 83318
(208) 878-9900

Flying S Title & Escrow
235 E. 3rd St. N. Suite. 1
Burley, ID 83318
(208) 878-4772

Lookout Federal Credit Union
1041 E. Main St. Burley, ID 83318
(208) 878-7100

LIVESTOCK FEED

Performix Nutrition Systems
235 W. 71 Lane S. Rupert, ID 83350
(208) 436-1724

LUBE SERVICE SHOP

360 Auto Center LLC
517 2nd St. Rupert ID 83350
(208) 436-9247

MACHINE PARTS

Badger Bearing
230 W. 20 S. Burley, ID 83318
(208) 878-0010

Barclay Mechanical / Crane Service
490 W. 100 S. Hwy 25, Paul, ID 83347
(208) 438-8108

Greer Truck & Trailer Parts
128 S. 600 W. Paul, ID 83347
(208) 438-7278

Haun's Hardware
23 E. Ellis St. Paul, ID 83347
(208) 438-5544

NAPA Auto Parts
413 F St. Rupert, ID 83350
(208) 436-3747

NAPA Auto Parts
501 Overland Ave. Burley, ID 83318
(208) 678-8311

MANICURES

Roots Salon & Plants
1518 Overland Burley, ID 83318
(385) 381-1398

MANUFACTURING

Advanced Biofuels of Idaho
1000 J St. Heyburn, ID 83336
(208) 593-3312

Gossner Foods
1201 7th Street Heyburn, ID 83336
(435) 752-9365

Gibby Group
134 E. Hwy 81, Burley, ID 83318
(208) 654-2733

Idahoan Foods LLC
823 S. Oneida St. Rupert, ID 83350
(208) 436-4104

Packaging Corporation of America (PCA)
1544 W. 27th St. Burley, ID 83318
(208) 678-3531

Packaging Specialties of Idaho, Inc.
2758 Washington Ave. Burley, ID 83318
(208) 878-4801

Pactiv Evergreen
2457 Washington Ave. Burley, ID 83318
(208) 677-1406

Pipeline Plastics, LLC
1301 Solana Blvd Bldg 1 Ste 1440
Westlake, TX 76262
(817) 693-4100

Saleen Crane Company
204 N. 5th St. West Paul, ID 83347
(208) 670-2901

Snake River Hydraulics Inc
530 16th Street Heyburn, ID 83336
(208) 678-9100

Standridge Color Corporation
1250 E. Railroad Ave. Burley, ID 83318
(208) 647-0040

Streamline Precision
120 S. 100 W. Burley, ID 83318
(208) 678-9204

Tessengerlo Kerley, Inc.
480 S. 260 W. Burley, ID 83318
(208) 678-9565

MARKETING

Dalton Direct Digital
122 N. Meridian Rupert, ID 83350
(909) 736-986

Redfish Design Studio
1811 J St. Unit #2, Heyburn, ID 83336
(208) 572-0144

Meadow Outdoor Advertising
12109 Honey Dew Dr.
Boise, ID 83709
(415) 244-0939

The Voice & Times-News Amplified Digital Agency
Serving Mini-Cassia Area
(208) 735-3208

Waymore Sales Solutions, LLC
39 E. 220 S. Burley, ID 83318
(208) 647-1951

MASSAGE THERAPY

Roots Salon & Plants
1518 Overland Burley, ID 83318
(385) 381-1398

MECHANICS

High Desert Mechanical LLC
1230 J. St. Heyburn, ID 83336
(208) 300-0260

MEDIA

KMVT
1100 Blue Lakes Blvd. N.,
Twin Falls, ID 83301
(208) 733-1100

The Voice & Times-News Amplified Digital Agency
Serving Mini-Cassia Area
(208) 735-3208

KSAW-Idaho News 6
690 Blue Lakes Blvd. N.,
Twin Falls, ID 83301
(208) 734-6022

MEDICAL

Family Health Services
402 6th St. Rupert, ID 83350
(208) 650-7941

Life Flight Network
1050 Airport Way Burley, ID 83318
(208) 869-0708

Urgent Care of Idaho - Burley Clinic
382 N. Overland Ave. Burley, ID 83318
(208) 678-6996

Wright Physical Therapy
1945 Hiland Ave. Burley, ID 83318
(208) 647-0224

MEDICAL SPA

Resilience Medical Spa
617 5th St. Rupert, ID 83350
(208) 670-3393

MORTGAGES

Guild Mortgage Company
1650 Overland Ave. Suite 3
Burley, ID 83318
(208) 831-2234

Lookout Federal Credit Union
1041 E. Main St. Burley, ID 83318
(208) 878-7100

MOTELS

Budget Motel
900 N. Overland Ave. Burley, ID 83318
(208) 678-2200

Drift Inn
545 F St. Rupert, ID 83350
(208) 436-1300

Greystone Crossing
1221 21st St. Heyburn, ID 83336
(208) 650-4979

Super 8 Motel
336 S. 600 W. Heyburn, ID 83336
(208) 678-7000

MUNICIPALITY

City of Albion
225 S. Main St. Albion, ID 83311
(208) 647-4644

City of Burley
1401 Overland Ave. Burley, ID 83318
(208) 878-2224

City of Declo
8 N. Clark Declo, ID 83323
(208) 654-2124

City of Heyburn
941 18th St. Heyburn, ID 83336
(208) 679-8158

City of Oakley
105 N. Center Oakley, ID 83346
(208) 862-3313

City of Paul
152 S. 600 W. Paul, ID 83347
(208) 438-4101

City of Rupert
624 F St. Rupert, ID 83350
(208) 436-9600

MUSEUM

Minidoka County Historical Society & Museum
99 E. Baseline Rupert, ID 83350
208-436-0336

Cassia County Historical Society & Museum
1142 Hiland Ave. Burley, ID 83318
208-678-7172

NEWS

KMVT
1100 Blue Lakes Blvd. N.,
Twin Falls, ID 83301
(208) 733-1100

KSAW-Idaho News 6
690 Blue Lakes Blvd. N.,
Twin Falls, ID 83301
(208) 734-6022

NEWSPAPERS

The Voice & Times-News Amplified Digital Agency
Serving Mini-Cassia Area
(208) 735-3208

NON-PROFIT

The American Legion

565 S. 100 W. Rupert, ID 83350
(208) 312-0655

Burley Farmers Market

1101 Elba Ave. Burley, ID 83318
(208) 918-0587

Burley Senior Center

2421 Overland Ave. Burley, ID 83318
(208) 878-8646

Cassia County Historical Society and Museum

1142 Hiland Ave. Burley, ID 83318
(208) 678-7172

Cassia Festival of Trees

P.O. Box 726, Burley, ID 83338

Children's Museum of The Magic Valley

P.O. Box 2139, Twin Falls, ID 83301
(208) 536-3455

Friends of the DeMary Library

630 5th St. Rupert, ID 83350
(208) 490-4022

Lookout Federal Credit Union

1041 E. Main St. Burley, ID 83318
(208) 878-7100

Mini Cassia PAuSe

P.O. Box 464, Heyburn, ID 83336
(208) 431-7156

Minidoka County Historical Society Museum

99 E. Baseline Rupert, ID 83350
(208) 436-0336

Oakley Valley Arts Council, Inc.

160 N. Blaine Ave. Oakley, ID 83346
(208) 677-2787

Rise Up and Sing Inc.

981 N. 800 E. Rupert, ID 83350
(208) 431-4665

Rupert Elks

85 S. 200 W. Rupert, ID 83350
(208) 436-6852

Rupert United Methodist Church

605 H St. Rupert ID, 83350
(208) 436-3354

Simply Hope

1323 Oakley Ave. Suite 20,
Burley, ID 83318
(208) 679-9401

South Central Community Action Partnership

314 E. 5th St. Burley, ID 83318
(208) 678-3514

United Way of South Central Idaho

253 4th Ave. N. Twin Falls, ID 83301
(208) 733-4922

Voices Against Violence

115 W. 100th S. Rupert, ID 83350
(208) 733-0100

NURSERY

Kimberly Nurseries Landscape & Irrigation

2862 Addison Ave. E.
Twin Falls, ID 83301
(208) 733-2717

Mary Lou's Greenhouse & Flower Cart

1550 Oriental Ave. Burley, ID 83313
(208) 878-3566

NURSING HOME

Pomerelle Place

1301 Bennett Ave. Burley, ID 83318
(208) 677-8212

OPTICAL

Family Vision & Eye Care

714 G St. Rupert, ID 83350
(208) 436-3455

ORGANIZATION

Oakley Valley Arts Council, Inc.

160 N. Blaine Ave. Oakley, ID 83346
(208) 677-2787

OUT DOOR HOSPITALITY

Rock Wren Hideaway

2371 S. Elba Almo Rd. Elba, ID 83342
(208) 749-0560

PAINT

Aim High Painting

1410 Filer Ave. E. Twin Falls, ID 83301
(208) 329-4037

Pro Paint Inc

1116 Overland Ave Burley, ID 83318
(208) 878-0856

Stars Ferry Building Supplies, Inc.

20 S. 300 W. Burley, ID 83318
(208) 678-5562

PARTY CENTER

Albion Campus Retreat

437 W. North St. Albion, ID 83311
(208) 312-8484

The Burley Inn & Convention Center

800 N. Overland Ave.
Burley, ID 83318
(208) 678-3501

The Historic Wilson Theatre

610 Fremont Ave. Rupert, ID 83350
(208) 436-2787

PAYROLL

BBSI

1502 Locust St. N. Suite 500A
Twin Falls, ID 83301
(208) 735-5002

Gem State Staffing

641 N Overland Ave. Burley, ID 83318
(208) 677-9999

PEDIATRIC DENTIST

Burley Kids Dental

859 Oakley Ave. Burley, ID 83318
(208) 677-4531

PEST CONTROL

Vertex Pest Control

534 W. 100 S. Paul, ID 83347
(208) 308-1188

PHOTOGRAPHY

Studio K Portrait Gallery

713 N. 300 W. Rupert, ID 83350
(208) 431-7689

PHYSICAL FITNESS

Impact Athletic

1150 E. 16th St. Burley, ID 83318
(208) 678-5011

Burley Physical Therapy and Rehabilitation

1263 Bennett Ave. #2, Burley, ID 83318
(208) 678-1191

Southern Idaho Therapy Services

1224 8th St. Suite A, Rupert, ID 83350
(208) 436-9016

Wright Physical Therapy

1945 Hiland Ave. Burley, ID 83318
(208) 647-0224

PIZZA

Portside Pizza and Pub

197 W. Hwy 30, Burley, ID 83318
(208) 431-8274

Puder's Pizza

725 Minidoka Ave. Burley, ID 83318
(208) 679-2695

POOL

Aqua Advantage Pool & Spa Services

334 E. Main Burley, ID 83318
208-727-7909

Durfee Hot Springs

2798 Elba-Almo Rd. Almo, ID 83312
(208) 824-5701

Hampton Inn Burley

560 Hampton Dr. Burley, ID 83318
(208) 878-7040

Impact Athletic

1150 E. 16th St. Burley, ID 83318
(208) 678-5011

PORTRAIT ARTIST

Studio K Portrait Gallery

713 N. 300 W. Rupert, ID 83350
(208) 431-7689

POWER COMPANY

Idaho Power Company

243 Blue Lakes Blvd. S.,
Twin Falls, ID 83301
(208) 736-3210

PRE SCHOOL

Trinity Evangelical Lutheran Church

909 8th St. Rupert, ID 83350
(208) 436-3413

PRE-OWNED DEALERSHIP

Goode Motor Ford

1096 E. Main St. Burley, ID 83318
(208) 878-5611

PRINTING

Burley Reminder

1220 Albion Ave. Burley, ID 83318
(208) 878-2233

Speedcraft Printing & Awards

1337 Albion Ave. Burley, ID 83318
(208) 678-0151

**Visit The
Historic**

CITY OF RUPERT

PROPERTY MANAGEMENT

Direct Realty LLC

2147 Albion Ave. Burley, ID 83318
(208) 677-2055

Keller Williams Sun Valley Southern Idaho

515 5th St. Rupert, ID 83350
(208) 431-4584

Turn Key Realty

1341 Overland Ave. Burley, ID 83318
(208) 678-2055

REALTORS

Direct Realty LLC

2147 Albion Ave. Burley, ID 83318
(208) 677-2055

Flying S Title & Escrow

235 E. 3rd St. N. Suite 1,
Burley, ID 83318
(208) 878-4772

Homesmart Premier Realty

1321 Oakley Ave. Burley, ID 83318
(208) 598-0433

Keller Williams Sun Valley Southern Idaho

515 5th St. Rupert, ID 83350
(208) 431-4584

Keystone Realty

1200 Overland Ave. Burley, ID 83318
(208) 721-1733

Mini-Cassia Association of Realtors

132 W. 13th St. Burley, ID 83318
(208) 878-9170

Norman Real Estate LLC - Westerra Real Estate Group

2550 Overland Ave. Burley, ID 83318
(208) 420-1885

River Bridge Realty, Inc

629 Fremont Ave. Rupert, ID 83350
(208) 312-1243

Rocky Mountain Real Estate Brokerage

530 Oneida St. Rupert, ID 83350
(208) 436-9429

Turn Key Realty

1341 Overland Ave. Burley, ID 83318
(208) 678-2055

Westerra Real Estate Group

634 5th St. Rupert, ID 83350
(208) 436-7653

RECREATION

Arcadia Burley LLC

759 Overland Ave. Burley, ID 83318
(208) 654-1200

Boys & Girls Club of Magic Valley- Rupert

323 1st St. Rupert, ID 83350
(208) 647-4757

Castle Rocks State Park

748 E. 2800 S. Almo, ID 83312
(208) 824-5901

Durfee Hot Springs

2798 Elba-Almo Rd. Almo, ID 83312
(208) 824-5701

Epic Ride

2267 Overland Ave. Burley, ID 83318
(208) 647-0090

Hampton Inn Burley

560 Hampton Dr. Burley, ID 83318
(208) 878-7040

Idaho Water Sports

2165 Overland Ave. Burley, ID 83318
(208) 678-5869

Lake Walcott State Park

959 E. Minidoka Dam Rd.
Rupert, ID 83350
(208) 436-1258

Minidoka County

715 G St. Rupert, ID 83350
(208) 436-7111

Minidoka County Fair Board

85 E. Baseline Rd. Rupert, ID 83350
(208) 436-9748

Pomerelle Mountain Resort

961 E. Howell Canyon Rd.
Albio, ID 83311
(208) 673-5599

Puttin' Around & Stuff

560 E. 5th St. N. Burley, ID 83318
(208) 670-1206

Rock Wren Hideaway

2371 S. Elba Almo Rd. Elba, ID 83342
(208) 749-0560

Snake River Bowl

725 Minidoka Ave. Burley, ID 83318
(208) 679-2695

Travel Stop 216 & Village of Trees RV Resort

274 N. Hwy 25, Exit 216
Declo, ID 83323
(208) 654-9550

Yankum Ropes

915 Overland Ave. Suite A
Burley, ID 83318
(208) 572-0257

Young Power Sports

333 Overland Ave. Burley, ID 83318
(208) 678-5111

REPAIR

Gaylon's Auto Body

709 2nd St. S. Rupert, ID 83350
(208) 436-9716

Goode Motor Ford

1096 E. Main St., Burley, ID 83318
(208) 878-5611

Haun's Hardware

23 E. Ellis St. Paul, ID 83347
(208) 438-5544

Idaho Water Sports

2165 Overland Ave. Burley, ID 83318
(208) 678-5869

Kim Hansen Chevrolet

1221 W. Main St. Burley, ID 83318
(208) 678-2221

Kimberly Nurseries Landscape & Irrigation

2862 Addison Ave. E.
Twin Falls, ID 83301
(208) 733-2717

Les Schwab Tires - Burley

2555 S. Overland Ave. Burley, ID 83318
(208) 678-4400

NAPA Auto Parts

413 F St. Rupert, ID 83350
(208) 436-3747

NAPA Auto Parts

501 Overland Ave. Burley, ID 83318
(208) 678-8311

Novus Auto Glass/Durutec Auto Accessories

659 Overland Ave. Burley, ID 83318
(208) 678-3309

Nu-Vu Glass

1601 Overland Ave. Burley, ID 83318
(208) 678-2229

Ramsey Heating & Electric, Inc.

2600 Overland Ave. Burley, ID 83318
(208) 678-0459

Young Automotive Group

259 Overland Ave. Burley, ID 83318
(208) 647-0503

Young Power Sports

333 Overland Ave. Burley, ID 83318
(208) 678-5111

RESTAURANT

The 208 Grill

2359 Overland Ave. Burley, ID 83318

AC Drive-In

601 E. Main St. Burley, ID 83318
(208) 678-0141

The Boathouse in Burley

197 W. Hwy 30, Burley, ID 83318
(208) 431-8218

Burger King (HB LLC)

114 W. 5th St. N. Burley, ID 83318
(208) 678-7779

Burgers Etc.

700 Overland Ave. Burley, ID 83318
(208) 678-4189

Burgers Etc.

124 S. Oneida St. Rupert, ID 83350
(208) 436-0600

The Burley Inn & Convention Center

800 N. Overland Ave. Burley, ID 83318
(208) 678-3501

Costa Vida

170 E. 5th Street N. Burley, ID 83318
(708) 572-7200

Denny's

611 N. Overland Ave. Burley, ID 83318
(208) 678-8786

Drift Inn

545 F St. Rupert, ID 83350
(208) 436-1300

Edgewater Dining and Spirits

530 Hampton Dr. Burley, ID 83318
(208) 878-0040

Edith's Cafe

144 E. Hwy 81, Burley, ID 83318
(208) 878-2248

Jersey Mike's - Burley

208 East 5th, Burley, ID 83318
(208) 650-4317

McDonald's of Burley

394 N. Overland Ave. Burley, ID 83318
(208) 678-2230

Morey's Steakhouse

219 E. 3rd St. Burley, ID 83318
(208) 679-1166

Outpost Steakhouse

3020 Elba-Almo Rd. Almo, ID 83312
(208) 824-5578

Perkins Family Restaurant

800 N. Overland Ave. Burley, ID 83318
(208) 678-1304

Portside Pizza and Pub

197 W. Hwy 30, Burley, ID 83318
(208) 431-8274

Puder's Pizza

725 Minidoka Ave. Burley, ID 83318
(208) 679-2695

Spud Cellar

800 N. Overland Ave. Burley, ID 83318
(208) 678-3500

Tank Hill Pizza & Pottery

247 W. North St. Albion, ID 83311
(208) 673-4000

Teedies Ice Cream, Coffee, & Sundries

515 5th St. Rupert, ID 83350
(208) 434-2001

Wayside Cafe

325 S. Hwy 24, Rupert, ID 83350
(208) 436-4800

Winger's Ale House

769 N. Overland, Burley, ID
(208) 878-9464

RESTORATION

Elite Restoration

495 E. 5th St. Burley, ID 83318
(208) 677-3473

RETAIL

Bedke's

1558 Normal Burley, ID 83318
(208) 431-2993

Burley Soft Water LLC

1243 Hansen Ave. Burley, ID 83318
(208) 678-5476

C-A-L Ranch

226 N. Overland Ave. Burley, ID 83318
(208) 678-7610

Haun's Hardware

23 E. Ellis St. Paul, ID 83347
(208) 438-5544

Idaho Water Sports

2165 Overland Ave. Burley, ID 83318
(208) 678-5869

K & R Rental & Sales

256 A-S. 600 W. Heyburn, ID 83336
(208) 678-3122

Lee's Furniture

459 Overland Ave. Burley, ID 83318
(208) 878-2341

Redder's Showkase

2611 Overland Ave. Burley, ID 83318
(208) 878-2000

Skaggs Furniture

149 E. 23rd Dr. Burley, ID 83318
(208) 878-5100

Stokes Market, Inc.

1310 Pomerelle Ave. Burley, ID 83318
(208) 678-0425

Wilson Bates

246 E. 5th St. N. Burley, ID 83318
(208) 678-1133

RETIREMENT PLANNING

Five Rings Financial

751 Schodde Ave. Burley, ID 83318
(208) 219-6208

ROOFING

Omega Roofing LLC

1305 D St. Rupert, ID 83350
(208) 243-8016

SCHOOL TRAINING

Cosmetology School of Arts and Science

485 E. 5th St. N. Burley, ID 83318
(208) 678-4454

SCHOOLS

Cassia County School District #151

3650 Overland Ave. Burley, ID 83318
(208) 878-6600

College of Southern Idaho, Mini-Cassia

1600 Parke Ave. Burley, ID 83318
(208) 678-1400

Minidoka County School District #331

310 10th St. Rupert, ID 83350
(208) 436-4727

St. Nicholas Catholic School

806 F St. Rupert, ID 83350
(208) 436-6320

Trinity Evangelical Lutheran Church

909 8th St. Rupert, ID 83350
(208) 436-3413

SCREEN PRINTING

Accurate Imprints

504 6th St. Rupert, ID 83350
(208) 434-2757

SEASONAL MAINTENANCE

C.K. Window Cleaning LLC

595 West Sunnyslope Paul, ID 83347
(208) 312-1240

SEED

Kelley Bean Co.

106 Read Ave. Rupert, ID 83350
(208) 436-3611

Western Seed

1531 W. US 30 Heyburn, ID 83336
(208) 678-2268

SENIOR CENTER / SERVICES

Burley Senior Center

2421 Overland Ave. Burley, ID 83318
(208) 878-8646

Senior Solutions

2040 Yale Burley, ID 83318
(208) 219-9932

SERVICE SHOP

Goode Motor Ford

1096 E. Main St. Burley, ID 83318
(208) 878-5611

SHAVED ICE

The Snow Shoppe

113 E. Ellis St. Paul, ID 83347
(208) 431-0899

SHOPPING

Stokes Market, Inc.

1310 Pomerelle Ave. Burley, ID 83318
(208) 678-0425

Wilson Bates

246 E. 5th St. N. Burley, ID 83318
(208) 678-1133

SOCIAL MEDIA

Dalton Direct Digital

122 N. Meridian Rupert, ID 83350
(909) 736-9868

SOCIAL SERVICES

Idaho Division of Vocational Rehabilitation

127 W. 5th St. Suite B, Burley, ID 83318
(208) 678-3838

South Central Community Action Partnership

314 E. 5th St. Burley, ID 83318
(208) 678-3514

SPORTING GOODS

Fan Zone Athletics

1238 Overland Ave. Burley, ID 83318
(208) 530-4446

STAFFING

American Staffing

1711 Overland Ave. Suite B
Burley, ID 83318
(208) 678-9445

Gem State Staffing

641 N Overland Ave. Burley, ID 83318
(208) 677-9999

Personnel Plus, Inc.

735 Overland Ave. Burley, ID 83318
(208) 678-4040

STEAKHOUSE

Outpost Steakhouse

3020 Elba-Almo Rd. Almo, ID 83312
(208) 824-5578

Edgewater Dining & Spirits

530 Hampton Dr. Burley, ID 83318
(208) 878-0040

STORAGE UNITS/ BOATS & RV'S

Mr. Storage

411 Overland Ave. Burley, ID 83318
(208) 219-5211

STORAGE WAREHOUSE

Americold Logistics

280 W. Hwy 30, Burley, ID 83318
(208) 677-3000

Mr. Storage

411 Overland Ave. Burley, ID 83318
(208) 219-5211

SUPPORT GROUP

Simply Hope

1323 Oakley Ave. Suite 20
Burley, ID 83318
(208) 679-9401

TAX PREPARATION

Condie, Stoker & Associates, CPA's

506 6th St. Rupert, ID 83350
(208) 436-9911

Garald Price & Associates, P.A.

2058 Overland Ave. Burley, ID 83318
(208) 878-9000

Liberty Tax & Loans

959 Overland Ave. Burley, ID 83318
(208) 878-9999

Phillips Oakes Goodwin Crane & Co, PLLC

1710 Overland Ave. Burley, ID 83318
(208) 878-7000

Phillips Oakes Goodwin Crane & Co, PLLC

620 5th St. Rupert, ID 83350
(208) 436-5607

Poulsen, VanLeuven & Catmull, CPA's

1408 Pomerelle Ave. Burley, ID 83318
(208) 678-1300

Solv Group

1650 Overland Ave. #11
Burley, ID 83318
(208) 678-3355

Westfall & Westfall, CPA's
1329 Albion Ave. Burley, ID 83318
(208) 878-0466

TECHNOLOGY SYSTEMS

Express Tech Inc
1334 Albion Ave, Burley, ID 83318
(208) 650-8984

System Tech, Inc.
2854 S. Featherly Way Boise, ID 83709
(208) 362-6493

TELEPHONE

ATC Communications
225 W. North St. Albion, ID 83311
(208) 673-5335

Eminent Technical Solutions LLC
1103 N. 1600 W. Layton, UT 84041
(208) 647-7156

Harris Electronics and Communication (HEC)
1287 W. Main St. Burley, ID 83318
(208) 678-8789

Project Mutual Telephone
507 G St. Rupert, ID 83350
(208) 436-7151

Project Mutual Telephone
1458 Overland Ave. Burley, ID 83318
(208) 878-7151

TDS Fiber
240 Eastland Dr. Unit 1-Suite 6
Twin Falls, ID 83301
(208) 816-9188

Integrated Technologies
393 Eastland Drive S.
Twin Falls, ID 83301
(208) 734-6181

THEATRE

Century Cinema 5
464 E. 5th St. Burley, ID 83318
(208) 678-3131

The Historic Wilson Theatre
610 Fremont Ave. Rupert, ID 83350
(208) 436-2787

Mt. Harrison Heritage Foundation
111 W. 15th St. Burley, ID 83318
(208) 878-6801

Oakley Valley Arts Council, Inc.
160 N. Blaine Ave. Oakley, ID 83346
(208) 677-2787

TIERS

Les Schwab Tires - Burley
2555 S. Overland Ave. Burley, ID 83318
(208) 678-4400

TITLE COMPANY

Flying S Title & Escrow
235 E. 3rd St. N. Suite.1
Burley, ID 83318
(208) 878-4772

TitleOne
710 G St. Rupert, ID 83350
(208) 436-0606

TitleOne
211 W. 13th St. Burley, ID 83318
(208) 878-3524

TRAVEL

Castle Rocks State Park
748 E. 2800 S. Almo, ID 83312
(208) 824-5901

City of Albion
225 S. Main St. Albion, ID 83311
(208) 647-4644

City of Burley
1401 Overland Ave. Burley, ID 83318
(208) 878-2224

City of Declo
8 N. Clark Declo, ID 83323
(208) 654-2124

City of Heyburn
941 18th St. Heyburn, ID 83336
(208) 679-8158

City of Oakley
105 N. Center Oakley, ID 83346
(208) 862-3313

City of Paul
152 S. 600 W., Paul, ID 83347
(208) 438-4101

City of Rupert
624 F St. Rupert, ID 83350
(208) 436-9600

Hampton Inn Burley
560 Hampton Dr. Burley, ID 83318
(208) 878-7040

Lake Walcott State Park
959 E. Minidoka Dam Rd.
Rupert, ID 83350
(208) 436-1258

Minidoka County
715 G St. Rupert, ID 83350
(208) 436-7111

Minidoka County Fair Board
85 E. Baseline Rd. Rupert, ID 83350
(208) 436-9748

Pomerelle Mountain Resort
961 E. Howell Canyon Rd.
Albion, ID 83311
(208) 673-5599

Rock Wren Hideaway
2371 S. Elba Almo Rd. Elba, ID 83342
(208) 749-0560

Southern Idaho Tourism
2015 Neilsen Point Pl. Suite 200
Twin Falls, ID 83301
(208) 732-5569

Travel Stop 216 & Village of Trees RV Resort
274 N. Hwy 25, Exit 216
Declo, ID 83323
(208) 654-9550

Young Power Sports
333 Overland Ave. Burley, ID 83318
(208) 678-5111

TRUCKING

Trucking Americold Logistics
280 W. Hwy 30, Burley, ID 83318
(208) 677-3000

Barclay Mechanical / Crane Service
490 W. 100 S. Hwy 25, Paul, ID 83347
(208) 438-8108

Budget Truck Sales
251 Nevada Ave. Heyburn, ID 83336
(208) 878-8874

Dot Foods
1541 W. 27th St. Burley, ID 83318
(208) 678-6063

Greer Truck & Trailer Parts
128 S. 600 W. Paul, ID 83347
(208) 438-7278

Handy Truck Lines, Inc.
100 S. 400 W. Paul, ID 83347
(208) 438-5071

High Desert Milk
1033 Idaho Ave. Burley, ID 83318
(208) 878-6455

McCain Foods USA, Inc.
218 W. Hwy 30, Burley, ID 83318
(208) 678-9431

TV

TDS Fiber
240 Eastland Dr. Unit 1-Suite 6,
Twin Falls, ID 83301
(208) 816-9188

UTILITIES

Idaho Power Company
243 Blue Lakes Blvd. S.
Twin Falls, ID 83301
(208) 736-3210

Intermountain Gas Company
451 Alan Dr. Jerome, ID 83338
(208) 737-6300

Project Mutual Telephone
507 G St. Rupert, ID 83350
(208) 436-7151

Project Mutual Telephone
1458 Overland Ave. Burley, ID 83318
(208) 878-7151

United Electric Co-op, Inc.
1330 21st St. Heyburn, ID 83336
(208) 679-2222

VETERINARY

Burley Veterinary Hospital
2869 Overland Ave. Burley, ID 83318
(208) 678-5509

WATER TREATMENT

Burley Soft Water LLC
1243 Hansen Ave. Burley, ID 83318
(208) 678-5476

WATER WORKS

Mountainland Supply
839 Albion Ave. Burley, ID 83318
(208) 670-6200

WEB DESIGN DEVELOPMENT

Redfish Design Studio
1811 J St. Unit #2, Heyburn, ID 83336
(208) 572-0144

WHOLESALE DISTRIBUTION

Mountainland Supply
839 Albion Ave. Burley, ID 83318,
(208) 670-6200

Visit Our Website
To Learn More
About Our Local
Economy & Chamber
Information!

minicassiachamber.com



No matter what you're looking for in your professional career,
Dot Foods and Dot Transportation, Inc. can help you get there.

Since Dot's founding in 1960, our focus has been on giving our employees the resources they need in order to grow and succeed. And that's been our ongoing mission here in Burley since joining the community in 2008.

Whether you spend your days in our warehouse, our office, or over the road, we are proud to offer advancement opportunities as well as great benefits, job flexibility, performance bonuses, and the pay you deserve.

Dot Foods & Dot Transportation , Inc. (DTI) **By the Numbers**

15 North American distribution centers
(including Burley)

44 terminal locations
(including Boise, Caldwell, Salt Lake City, and Yakima)

125,000 products

1,730 trucks

4.9 million square feet of warehouse space

Zero layoffs in company history

View current employment opportunities at **Careers.DotFoods.com**

STANLEY

TRAILHEAD to IDAHO ADVENTURE

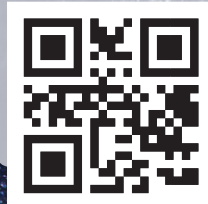


VISIT STANLEY

Your year-round destination...

Nestled in the Sawtooth Valley, Stanley is truly the trailhead to Idaho adventure. Along with the unmatched outdoor recreation opportunities, this bustling city is jam-packed with year-round events!

- Memorial Day Run
- Sawtooth Valley Gathering
- Live Music Every Weekend
- 4th of July Fireworks
- Dark Sky Reserve Star Gazing
- Thursday Night Street Dances
- Educational Events & Lectures
- Sawtooth Salmon Festival
- Sawtooth Festival for Arts, Crafts & Food
- Stanley Winterfest
- Stanley Pond Hockey Tournament
- Snowmobile Fun Run



SCAN NOW!



stanleycc.org

