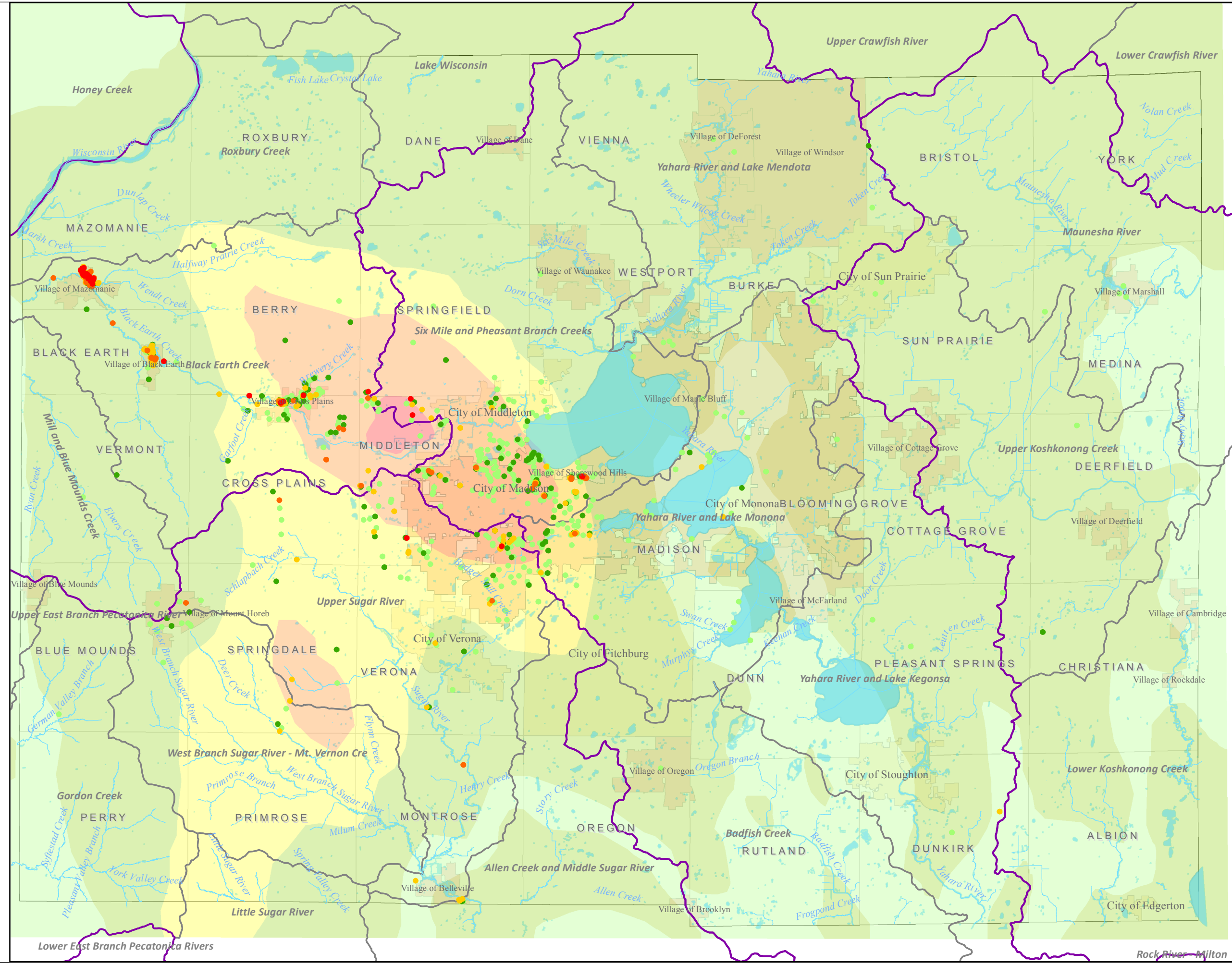


Dane County
August - September
2018

Residential
Flood Damage

For
Discussion
Only



Legend

12 Hour Rainfall: August 20, 2018
(National Weather Service)

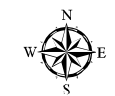
- Less than 1 inch
- 1 to 3 inches
- 3 to 6 inches
- 6 to 8 inches
- 8 to 12 inches

FEMA Individual and Household
Assistance Program Payments

Household Assistance Total

- \$0 *
- \$1 - \$1,000
- \$1001 - \$5,000
- \$5001 - \$10,000
- \$10,000 - \$20,000
- \$20,001 - \$37,537

- River Basins
- Watershed Boundary
- City
- Village
- Town
- Lakes, Rivers and Streams



Prepared by Dane County Emergency Management
 August 2018

This map produced by Dane County Emergency Management in conjunction with Dane County Planning and Development. Map information is believed to be accurate but it is not guaranteed to be without error. Source data used to compile this map is dynamic and in a constant state of maintenance, correction and update.

This map does not represent a field survey and is not intended to be used as one.

For general cartographic and reference purposes only.