

Join Heartland Credit Union, where
your dollar supports family farms
that produce food for your tables.

Learn more at heartlandcu.org/eatlocal

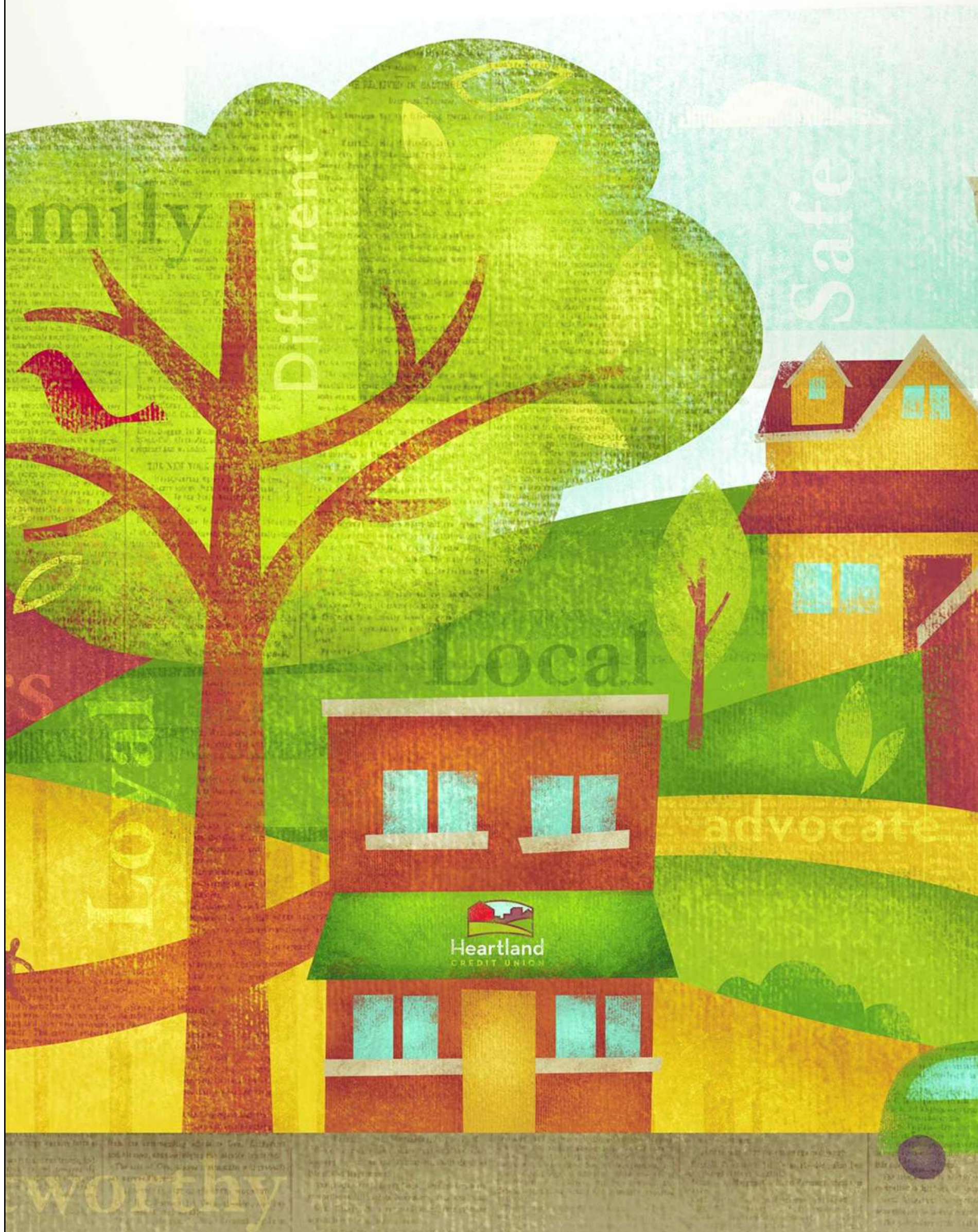


Heartland

CREDIT UNION

It's different in the heartland.

800.362.3944 >



Madison: High Crossing Boulevard & Williamson (Willy) Street
DeForest • Verona • Dodgeville • Lancaster • Platteville

Federally insured by NCUA.