

GOT A SCREW LOOSE?

WE CAN FIX THAT! REGARDLESS OF YOUR BRAND OR WHERE YOU BOUGHT, SEI WAUPACA WILL PROVIDE EXCEPTIONAL SERVICE AND PARTS SUPPORT FOR YOUR EQUIPMENT. 715-258-3266

IN STOCK NEW MANURE SPREADERS



New Meyer 9524W Crop Max Spreader
S-200 Vertical Beater Attachment w/Swing Arm Tailgate; High Flotation Tandem Axle Trailer w/3000lb Spring Axles; Slider System; Hydraulic Controlled Brakes; 710/50x26.5 18 Ply Heavy Duty Radial Flotation Tires Mounted on 26.5x24 Wheels. E39629 **\$75,999**



New Meyer M3280 Manure Spreader
tandem axle; 540 PTO; hydraulic endgate; top beatgear; hydraulic apron; 100HP and up; tires: 425/65; light kit. E39371 **\$21,599**



New Kuhn Pro Push 2054 Manure Spreader
vertical beaters, 540 cu ft, 160 HP min, small 1000 PTO, manual flow control, sequencing valve. E39791 **CALL**



New H&S HPV4155 Manure Spreader
550 BU; 1-3/8" small 1000 PTO; over-running torque limited clutch; hydro-push manure spreader w/vertical beaters; Tires: 425 x 22.5. E40119 **\$8,966**



New Kuhn SLC126T Manure Spreader
front left side discharge, splash guards, 1 3/8 1000PTO, light kit, clevis hitch, 2600 gallon capacity, 8 bolt bogie, 191-16.1. E39737 **CALL**



New H&S S3143 box type manure spreader; 430 bushel capacity; 540 rpm PTO drive; dual cylinder hyd end gate; top beater kit is installed; tandem axles; poly board floor and sides; splash guards; E39548 **\$18,999**

USED COMBINES



Case IH Combine 2366; Axial-Flow, CHA, Hydro, Instructor seat, 6 Cyl Turbo Diesel, Block Heater, 240Hp, 180 Bu. Grain Tank, Straw Spreader, 2wd. E40234 **\$33,884**

JD Combine 9400; 2WD, CHA, Mauer Grain Bin Extension, Green star Yield and Moisture Brown box, Straw chopper and Spreader, 24.5x32 Drive Tires, 14.9x24 rear tires. Last Year of the 100 series. E40018 **\$27,999**

SKIDSTEER USED SNOW PUSHERS



Snow Pusher Skidsteer mount; 7'8" wide, Poly Bolt on cutting edge. E39905 **\$1,399**

CID Snow Pusher SSL Quick Tach; 72" Working Width, Rubber Edge. E40633 **\$1,995**

USED GRAIN TRUCK



Ford Grain Truck 7000; 2wd, 16' X 7'4", 4'6" inside height of box, Cat Diesel Engine, 11R22.5 Tires. E39904 **\$5,998**

GRAVITY BOXES



Killbros Gravity Box 1065; 625 Bu. Left Side Unload, Side and Rear Windows, Work Light, Transport Lights, Rear Hitch, 4 Wheel Drum Brakes, 425/65R22.5 10 Bolt. E40594 **\$13,665**



Unverferth Wagon 430; 430 Bushel, Left side Discharge, Two Left side windows, Rear Hitch, Lights, Rear Wheel Brakes, 16.5-22.5, 8 Bolt Wheels. E40526 **\$8,999**

J&M Gravity 385; W/Top Extensions, Left side discharge, Rear Hitch, Lights, Rear plug in, J&M Gear, 425/65R22.5 8 bolt. E39830 **\$6,999**

Brent Gravity Box 365; Left side Unload, Rear Hitch, 365 Bu., 16.5L-16.1 8 Bolt. E39853 **\$4,775**

EZ Trail Gravity Box 3400; 300 Bu., Left Side Discharge, Rear Hitch, Lights, 1384 EZ Trail gear, 10.00-20 8 Bolt Wheels. E40495 **\$4,459**

Parker Gravity Box 2600; Lift Side Discharge, Center Divider in Box, Tarp, Lights, Rear Hitch, Telescoping tongue, Approx. 400 BU., 16.5L-16.1, 8 bolt. E39903 **\$5,445**

EZ Trail Gravity Box 3400; 300 Bu. Capacity, Tarp, Rear Hitch, EZ Trail 1074 Gear, Subaru 9.0 EX27 Motor Hyd Power, 6"x14" Auger, Flex spout, 12.5L-15 6 bolt. E40476 **\$6,655**

J&M Gravity Box 350; 15 Ton Gear, Spring assist quick Hitch, Rear Hitch, 16.5x16.1, 8 bolt wheels. EX0701 **\$4,900**

NEW GREAT PLAINS



New Great Plains Turbo Max 1200TM Vertical Tillage; 20"x.256" turbo blades on 71/2" spacing; extra heavy duty C shank; wing flex 10"; walking tandem on center transport; dual wing tires; constant level hitch; single tang case hitch; single point depth adjustment; safety light kit; 12 ft tillage width; rolling harrow and heavy duty reel; 10-12 hp/ft E39825

New Great Plains Turbo Max 1800TM Vertical Tillage; 20"x.256" turbo blades on 71/2" spacing; extra heavy duty C shank; wing flex 10"; walking tandem on center transport; dual wing tires; constant level hitch; single tang case hitch; single point depth adjustment; safety light kit; 18ft tillage width; rolling harrow and heavy duty reel; E39826

New Great Plains 2400 turbo max; vertical tillage tool, 24" width, adjustable turn buckle, hydraulically controlled disc gang angle 0 to 6 degrees, rolling rear spikes rear reel finisher. E39827

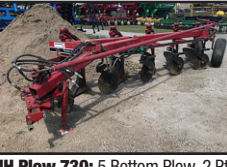
JUST IN



Case IH Tractor Magnum 340; Luxury Cab, Leather, Inst. Seat, 19F Spd PS, 50kph, Factory Guidance Ready, Hyd Trailer Brake, Cok Hitch, Big 1000, Four Elec Rmets, Pwr Beyond motor return Valve, Class 5 Susp, Axle 10 Ft Weights, 1500lb per side in rear, 6Cyl Turbo, 340HP, 360HD work Lamps, Frt Fenders, 480/80R50. E40695 **CALL**

Case IH Tractor 190; Luxury Cab, Performance Instrument Cluster, Frt/Rear HID Work Lamps, 19F/6R PS, Econo-40KPH, Quick Hitch, 4 Elec. Rmets, 540/1000pto, Class 4 Axle, Cab Suspension, Frt Weights, 119" Bar Axle, Nav Controller, 190HP, 480/80R46 W/Duals. E40710 **CALL**

USED PLOW



IH Plow 730; 5 Bottom Plow, 2 Pt Mt, Trash Wips, 18" Coulters, 9.5L-14 Tail Wheel and 11L-15 Toggle Trip, Depth Wheel. E40493 **\$2,499**

USED GRAIN CARTS



J&M Grain 810 Extended Reach; 875 Bu. Cap., Tarp, Hyd Chute, lights, Big 1000 pto, 30.5L-32 Firestone, 10 bolt, Like New! E39667 **\$29,988**

J&M Grain Cart 750-16; 750Bu, Lights, Tarp, Spout Light, Big 1000 pto, 24.5-32 Ag Tires. E40016 **\$14,999**

Parker Grain 710; Small 1000 pto, Lights, 710 Bu., 24.5-32 12 ply 10 Bolt Diamond Tread. E39478 **\$9,999**

USED GRINDER/MIXER



NH Grinder 355; 540pto, 17" Auger, Hammers have not been turned, No Screens. 31x13.50-15 E39444 **\$7,599**

BALE PROCESSORS

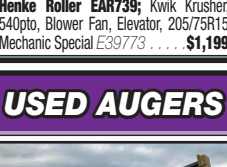


Vermeer Bale Processor BPX 9000; Small 1000 pto, Lights, 85 Hp Min, Self Loading, Right hand Discharge, 15.5L-16.1 Tires. E40772 **\$18,999**

Vermeer Bale Processor Catapult CPX9000; Lights, Control Box, Small 1000 pto, Throws 60' to 100', 110HP Needed, 2500lb bale Cap, Blower spout, Rear Hyd Bale Lift, 16.5L-16.1 E40608 **\$32,999**

Haybuster 2650; Small 1000 pto, Self Loading Two Bale Capacity, Lights, Right Side Discharge, 65HP Min., 12.5L-15 E38843 **\$10,999**

MECHANIC SPECIAL ROLLER MILL



Henke Roller EAR739; Kwik Krusher, 540pto, Blower Fan, Elevator, 205/75R15 Mechanic Special E39773 **\$1,199**

USED AUGERS



Westfield Auger WR80x26EMD; 5HP Motor, Dbl Clevis Hitch, 205/75R15 E40809 **\$2,495**

Hutchinson Auger 1061 with Swing out Hopper; Hydraulic lift, 540 pto, 225-75D15 E40760 **\$6,495**

CHOP CHOP USED CHOPPERS



2013 NH Pull Type Forage FP240; Metal III, Big 1000 pto, Lights, Rear Hyd Hitch, 12 Knives, NH 29P Hay Head, 14L-16.1 One Owner! Local Trade! E38431 **\$17,999**

2002 NH Pull Type Forage FP230; Metalert III, Crop Processor, Big 1000pto, Lights, NH 27P Hay Head Auger Feed. 31x13.50-15 E39812 **\$10,999**

Gehl Pull Type Forage 1085 Auto Max; Small 1000 pto, MetalStop, Rear Hitch, Lights, Gehl 1240 Hay Head, two Pick up Gauge Wheels, 16.5L-16.1. E40653 **\$7,995**

NH Pull Type Forage 790; Metalert II, Small 1000 pto, Control Box, NH 824N Corn Head, NH 890W Hay Head, 11L-14. E40797 **\$7,900**

USED TILLAGE



JD Disc 2720 5 Shank Disc Ripper Soil Management System; Dbl Spring Reset, Lights, Approx 22 1/2" disc's, scrapers front and rear, Round Bar Rolling Basket, 12'6" working width, 12.5L-15 Off Set Duals. E40771 **\$26,999**



Summers Super Coulter 20' Vertical Till/Disk Rock Flex Disk Gang; 3 Bar Coil Tine Harrow, Flat Bar Rolling Basket, Lights, 12 Weights, 12.5L-15 Duals. E40603 **\$29,500**



White Disk 271; 18Ft, Rock Flex, Front/Rear Scrapers, Rear Stand, Hyd Hoses & Cylinder, 9.5L-15 duals. E40147 **\$3,999**



Krause Chisel 4800-9; 9 Shank, 4" Twisted Shovelers, 10.00-15 Single Axle. E39783 **\$8,999**

Landoli Ripper 1550; 3pt mt, Five Shank, Single Spring Reset, 20.5x8.0-10. E39900 **\$6,690**

Landoli Soil 875-13D; 13 Ft Tilloll, Front Disc's, Single Spring Reset Shanks, Rear Roller and 3 Bar Spike Drag, 11L-15 Off Set Duals. E39441 **\$5,999**

JD Field Cultivator 960; 24Ft Working width, Single Spring Reset, 5 Bar Spike Drag, 9.5L-15 Off Set Duals on Main, Singles on Wings. EX0564 **\$1,995**

USED MANURE SPREADERS



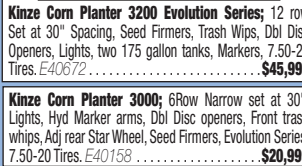
Meyer Manure Spreader 8865; Big 1000 1 3/4 pto shaft, Third Auger, Self Oiler, 4200 Gallons, 26Lx26 Tires. E40454 **\$11,380**

Kuhn/Knight Spreader SLC132; Side Slinger Spreader, Protwin, Hydraulic lid, Small 1000 pto, 3200 Gal, 385/65R22.5 Tires. EX0536 **\$39,500**

Knight Manure Spdr 1040; 540 pto, Rear Top Beater, Two Rear Lift Cylinders, Frt Splash Guard, Black Poly Floor, Diverter Valve, 10.00-20 Tandem Axle, 8 Bolt. EX0696 **\$6,995**

Meyer Manure Spreader 8720; Big 1000 pto, Lights, Frt/Rear Splash guard, Self Oiler, Tongue Jack, Vertical Rear Beater, 550/45-22.5 tires. E40643 **\$17,299**

USED PLANTERS



Kinze Corn Planter 3200 Evolution Series; 12 row Set at 30" Spacing, Seed Firmers, Trash Wips, Dbl Disc Openers, Lights, two 175 gallon tanks, Markers, 7.50-20 Tires. E40672 **\$45,999**

Kinze Corn Planter 3000; 6Row Narrow set at 30", Lights, Hyd Marker arms, Dbl Disc openers, Front trash whips, Adj rear Star Wheel, Seed Firmers, Evolution Series, 7.50-20 Tires. E40158 **\$20,999**

Kinze Planter 3700; 24 row, 30" Spacing, Liquid 2x2, Electric shut off every unit, 20/20 Seed Sense, Wave vision Seed Tubes, Finger Planter, Chain Drive, Precision Plant Row Flow, Row Cleaners, Dbl Disc Openers, Press Wheels, Rear Hitch, 36x16.00-17.5 E40181 **\$46,889**

Case IH 1235 Early Riser; 12RN set at 30", Stack Fold, 2x2 Fertilizer, Vacuum, Pro 700 Monitor, 3 Pt Mt, Dbl Disc Openers, 9.5-14 Two Tail wheels, 7.60-15. One Owner! E39668 **\$37,999**

SPECIAL



NH Big Square Baler BB9060; Standard Baler, Auto Oiler, Both 1000 pto Shafts, Roller Windguard, Two P/up Gauge Wheels, Light Package, Bale Eject, Manual Roller Chute, Intervis Monitor, 500/50-17 Tandem Steerable. E39024 **\$29,900**

USED ROUND BALERS



NH Round Baler Belt 460 Crop Cutter; Net only, 2.07 p/up, Endless Belts, Bale Ramp, 540 pto, 5 Bar p/up reel, Drop Floor, 18L-16.1. E40770 **\$27,999**

Case IH Round Baler RB464; 4x6 Bale, Net, 540pto, 6 Belts, Two Pick up Wheel, Hyd Pick up lift, Bale Ramp, Lights, Harvestec Liquid Applicator, 31x13.50-15. E40503 **\$18,995**

NH Round Baler BR780; 5x6 Bale, Lights, Bale Command, Twine, Net, Bale Ramp, Hyd P/up, Endless Belts Some Belts Replaced, 540 pto, Two Pick up Wheels, 31x13.50-15 E40470 **\$9,999**

NH Round Baler 658; 4x6 Bale, 1650 lb bale, 540pto, Net, Twine, Bale Command Monitor Plus, Lights, Two P/up Gauge Wheels, 31x13.50-15 Tires. EX0575 **\$11,495**

USED SKIDLOADERS



Bobcat SSL S650; Two Speed, Open Station, Hand/FT Controls, Fr Rmts, Manual Tach, Kubota 4 cyl engine, 74Hp, 6 Rear Weights, 12-16.5 Tires. E40463 **\$22,854**

NH SSL L225; CHA, Two Spd, Cloth Seat, Radio, Hyd Ock Tach, Frt Rmets, Hd/FT Controls, Turn Signals, Std Flow, Blk Htr, 2500lb Lift, 82hp, 12x16.5. E39772 **\$25,360**

NH SSL L230; CHA, 2 Spd, EH Controls, Aux Hyd, Radio, Horn, 90Hp, 3000lb lift, 78" Bkt, Manual Ock tach, Arm Rests, DEF, 14-17.5 E40054 **\$32,500**

NH SSL LS190.B; CHA, 2 Speed, Aux Hyd, 80 HP, 2800lb lift Cap, No Door, horn, Hyd Ock Tach, Hd/FT Controls, 12x16.5 Tires. E40600 **\$17,259**

USED EXCAVATORS



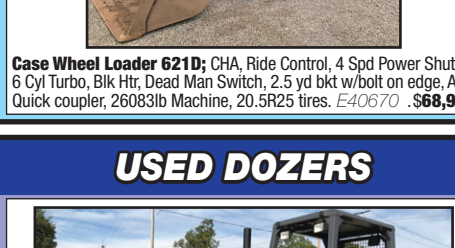
Kubota Excavator KX040-4 ECO Plus; 5'6" Float Angle Blade, CHA, 14" Tracks, 35" Bucket, 6 Teeth, Manual Thumb, Front Hyd, 3 Cylinder Kubota Diesel Engine 40hp, 9480lb Operating weight. E40466 **\$46,799**

Case Excavator CX57C; CHA, Stereo, Front Wiper, 16" Tracks, 6'3" Front Blade, 17" Bucket, 4 Teeth Frot Hyd Rmts, 4Cyl Turbo, 67Hp, 12268lb Operating weight. E40459 **\$56,900**

Bobcat Excavator E42; Open Station, Single Speed, 43HP, 6' Front Push Blade, 14" Tracks, 24" Bucket, Manual Quick Tach, Hyd Boom Swing, 9246lb Operating weight, 10.5" Digging Depth, 17.3" Reach. E40456 **\$28,849**

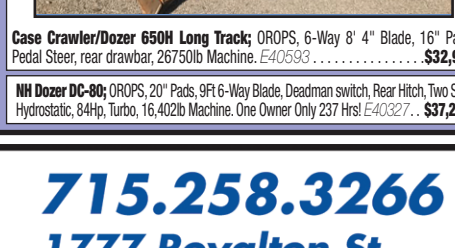
Cat Mini Excavator 302.7D CR; Open Station, 12" Rubber Tracks, 5' Push Blade, Frt Rmts, 17" Bkt, 4 Teeth, 3 Cyl Yanmar, 24.3Hp, 5890lb Machine. E39510 **\$18,899**

JUST IN



Case Wheel Loader 621D; CHA, Ride Control, 4 Spd Power Shuttle, 6 Cyl Turbo, Blk Htr, Dead Man Switch, 2.5 yd bkt w/bolt on edge, ACS Quick coupler, 26083lb Machine, 20.5R25 tires. E40670 **\$68,999**

USED DOZERS



Case Crawler/Dozer 650H Long Track; OROPS, 6-Way 8" 4" Blade, 16" Pads, Pedal Steer, rear drawbar, 26750lb Machine. E40593 **\$32,950**

NH Dozer DC-80; OROPS, 20" Pads, 9F 6-Way Blade, Deadman switch, Rear Hitch, Two Spd Hydrostatic, 84Hp, Turbo, 16,402lb Machine. One Owner Only 237 Hrs! E40327 **\$37,200**