

**FRESH TRADES**



**MF TO 35 DELUXE TRACTOR;** 6 Speed Forward / 2 Speed Reverse; 3 Point; 540 PTO; Work Lights; 12.4-28 R1 Tires; This Nicely Redone Tractor Will Look Great With Your Collection D09377 ..... **\$4,995**



**MF 1754 COMPACT TRACTOR;** 3 Range Hydro; DL 135 Loader; 72" Skid Steer Bucket; Quick Attach; Rear Hydraulic remote; Grill Guard; FT-10-16.5 6P RA; RT-17.5L-24 6P RA; One Owner W/ Only 250 Hours! Won't Find One Cleaner. Warranty Remaining Until September 2021! D09379 ..... **\$26,900**

**DOOSAN DL200 HIGH LIFT;** Cab W/ AC; 4 Speed Powershift; Rear Camera; LED Work Lights; JRB Coupler; Heated Mirrors; Auto and Manual Mode Transmission; 20.5-25 Tires; D09374 ..... **\$44,995**



**CLARK GC25E FORK LIFT;** LP Gas; 188" Lift; Side Shift; Solid tires; D09347 ..... **CALL**



**LULL 844C-42 HIGHLANDER EXTENDA BOOM FORKLIFT;** Cab W/ Heat; 4X4; Lull Omni Quick Attach; W/ 96" 1.25 CY Lull Bucket; Lull 8T50 48" Pallet Fork With Hydraulic Side Shift; 13.00-24 L2 Tires; 24,400 LBs; 42" Lift Height; 8000 LB Lift Capacity; 31.9' Reach D09346 ..... **CALL**

**CLEARING LAND? SEI ANTIGO HAS YOU COVERED!**

**TRACTOR LOADER BACKHOE**



**JD 5100 TRACTOR LOADER BACKHOE;** Cab W/ Heat; 8 Speed Powershift; 2WD; 96" Front Loader Bucket; 24" Dirt Bucket & 36" Dirt Bucket; Dirt Pads; Block Heater; Front Work Lights; 14L-16 Front Tires; 18.4-28 Rear R4 Tires; 16,000LB; 20.9" Dig Depth; 20" Reach; Nice Unit Service History Records! D09369 ..... **\$16,900**



**CAT D6M LGP;** 6 Way Blade; Cab W/AC; 3 Speed Powershift; Finger Tip Controls; 38" Pads; 13" Blade; 36,400 LB; Great Undercarriage! D09288 ..... **\$59,995**



**CASE 850M WT LGP;** Cab W/ AC; 10' 4" 6 Way Blade; 28" Pads; Only 1270 Hours; 22,830 lbs; Completely Rebuilt Undercarriage; Powertrain Plus Hydraulics Extended Warranty Until 4/30/2020 or 2268 Total Machine Hours D08936 ..... **\$92,900**



**KOMATSU D21A-5 BULLDOZER;** Open Station W/ Canopy; 6 Way 7" Blade; 2F/2R Transmission; 11" Steel Pads; 7980 LBS.; D 09310 ..... **\$14,995**

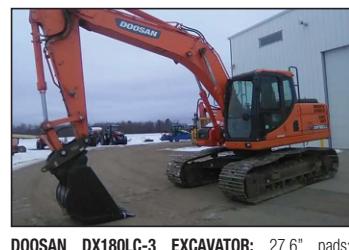
**COMPACT TRACK LOADER**



**TAKEUCHI TL250 TRACK LOADER;** EH Pilot controls; 2 Speed; Cab W/ A; Front Electric; Hydraulic Quick Attach; Mechanical Suspended Seat; Radio; Work Lights; 11905 Operating Weight; 3748 Lift Capacity; D09157 ..... **\$33,900**



**USED HITACHI ZX350-5N COMPACT EXCAVATOR;** Cab W/ AC; Eco & Power Mode; 2 Speed; 17" Bucket; Quick Coupler; Aux Hydraulics; Work Lights; Back Up Alarm; 68" Front Blade; 11.5" Rubber Tracks; 7760 LB; 17'1" Max Reach; 10' Max Depth; D09343 ..... **\$29,995**



**DOOSAN DX180LC-3 EXCAVATOR;** 27.6" pads; 17' boom; 8'6" stick; Secondary Aux Hydraulics; 40" bucket; heated air seat; 7" LCD Color monitor; radio; pattern changer; work lights; 41,248 LBS D08308 ..... **\$83,900**



**CAT 307 SSR;** Cab W/ Heat; Stick Controls; Radio; Work Lights; 18" Rubber Tracks; 24" Bucket; 92" Blade; 16,760lbs D08701 ..... **\$20,995**

**EXCAVATORS**

**USED SKID STEERS**



**CAT 262C-2 SKID STEER;** Cab W/ AC; EH Pilot Controls; Switchable between Pilot & H Pattern; 2 Speed; Hydraulic Quick Attach; Aux Hydraulics; Front & Rear Work Lights; 4 Rear Ballast Weights; 12X16.5 Tires D09340 ..... **\$26,900**



**NH L218 SKID STEER;** Cab W/ AC; Hand & Foot Controls; Single Speed; Aux Hydraulic; Hydraulic Coupler; Radio; 10X16.5 Tires; D09051 ..... **\$23,900**



**NH L218 SKID STEER;** Cab W/ heat; Hand and Foot Controls; Air Seat; Heated Seat; Deluxe Radio; Manual Attach; Aux Hydraulics; 10X16.5 Tires; No Bucket D08504 ..... **\$22,450**



**NH L220 SKID STEER;** Cab W/ AC; Hand & Foot Controls; Performance Package; Front Electric; Hydraulic Coupler; 2 Speed; Heated Air Seat; New 12X16.5 Tires; Local One Owner Trade! D09050 ..... **\$21,900**



**NH L228 SKID STEER;** Cab W/ Heat & AC; Mechanical Hand & foot Controls; Aux Hydraulics; 2 Speed; Hydraulic Coupler; Mechanical Seat Suspension; 14 X 16.5 Tires; D08690 ..... **\$20,900**



**BOBCAT 863 SKIDSTEER;** Enclosure With Out Front Door; Hand & Foot Controls; Aux Hydraulics; Manual Quick Attach; 72" Bucket; Nearly New 12-16.5 Tires; 7046 LBS Operating Weight; DX9332 ..... **\$11,995**

**TRACTORS**



**JD 6125R;** MT Transmission; GreenStar Command Center; 3 Electronic SCVs; LED Work Lights; Beacon; Buddy Seat; Fender PTO & 3 Point Controls; 540/1000 PTO; Toolbox; Front Fenders; 340/85R28 Front Tires; 420/85R38 Rear Tires; CLEAN ONE OWNER MACHINE W/ 1250 HOURS! D09234 ..... **\$82,995**



**WHITE 6175 WORKHORSE TRACTOR;** MFWD; Cab W/AC; 18 Speed Powershift; 3 Rear Remotes; 13/4" 1000 PTO; Block Heater; 15 Front Suitcase weights; Electronic Lift Control; Front Fenders; Tool Box; 420/85R30 Front Tires; 20.8R42 Rear Tires W/ Clamp on Duals; D09301 ..... **\$39,900**



**BUHLER VERSATILE 2210 TRACTOR;** MFWD; Cab W/AC; 16 Speed Powershift; 4 SCVs; 1 3/8" 1000 PTO; Front & Rear Work Lights; 12 Front Weights; 16.9R30 Front Tires; 20.8R42 Rear Duals D09093 ..... **\$36,995**



**JD 4650 TRACTOR;** MFWD; Cab W/ AC; 15 Speed Powershift; 3 Remotes; 1 3/4" 1000 PTO Shaft; Front Fenders; 18.4-26 Front Tires; 20.8R38 Rear Dual Tires; 861 Hours on Rebuilt Rear End; D09239 ..... **\$32,995**



**JD 2955 2WD TRACTOR;** Open Station; 8X2 Transmission W/ High-Low Shift; JD 148 Loader W/ 84" Pin On Bucket; 2 Remotes; Bar Axle; 18.4X34" Rear Tires D09171 ..... **\$19,900**



**CASE IH JX90U TRACTOR;** 24X24 Transmission W/ Power Reverser; 2WD; Cab W/ AC; Air Seat; 540/1000 PTO; 2 Rear Remotes; Front weight Carrier; Front & Rear Remotes; 1834-34 Rear Tires D09303 ..... **\$13,995**



**IH 5288 TRACTOR;** 3 Range 18 Speed Trans; 2WD; Cab W/ Heat & AC; Work Lights; Mirrors; Radio; 3 SCV; Return to Sump; 1 3/8" 1000 PTO; Extendable 3 PT Arms; 20.8R38 Clamp on Duals; D08764 ..... **\$14,500**

**CHOPPER SEASON SPECIALS**



**NH FP230 PULL TYPE CHOPPER;** Includes 29P Hay Head serial 41604; Metal Alert; Electric Spout Positioning; Single Axle; 31X13.50-15 D08680 ..... **\$15,900**



**JD 7800 SELF PROPELLED FORAGE HARVESTER;** PRWD; 3 Speed Hydro; Kernel Processor; Harvestec Applicator; Auto Lube; High Arch Spout; Corn Extension; 28 Rear Counter Weights; Work Lights; 900/55R32 Front Drive Tires; 480/80R26 Rear Tires; w/ heads D08577 ..... **\$75,000**



**NH FR9060 SPFH;** MFWD; Dohrmann Applicator; Intelliview II Monitor; Buddy Seat; Spout Camera; Dual Beacons; Kernel Processor; 7 Pin; 900/60R32 Drive Tires; 500/85R24 Rear Tires w/hay head D08882 ..... **\$89,900**

**AROUND THE LOT**

**BUSH HOG 176 3 POINT BLADE;** 69" Width; Hydraulic Angle & Hydraulic Tilt; D08885 ..... **\$2,995**

**HOME MADE LOG SPLITTER;** Mounted On Trailer; 5 HP Briggs Engine; Hydraulic Ram; Pintle Hitch D08973 ..... **\$495**

**NOTCH HV96 96" BUCKET** D09153 ..... **\$1,495**

**USED PULL TYPE HOME MADE SPRAYER;** 500 Gal Tank; 45' Booms; Electric Control Box For Unfold; D08511 ..... **\$1,499**

**BUSH HOG 3008 ROTARY CUTTER;** 8' Width; Twin Spindles; Front Chain Shield; Twin Laminated Casters D08886 ..... **\$5,495**

**HONDA BIG RED 700 MUV UTV;** 675cc liquid-cooled engine; Electric Winch; Manual Dump Box; 4WD; Diff Lock; Front Poly windshield; Rear Wind Screen; Head Rests; 2" Reciever; 5" Moose Plow; Snow Markers; Steel Edge; 25X10.00-12 Tires; D08618 ..... **\$6,995**

**CID QTSS EURO TO UNIVERSAL SSL CONVERSION BRACKET.** Only Used Once! D09000 ..... **\$495**

**JRB IT28 COUPLER;** off Doosan DL200-3; used on doosan wheel loaders to fit CAT 200/300/500 attachments; D08464 ..... **\$1,999**

**N-TECH 12' FOLDING MANURE SCRAPER;** sectional fold; rubber edge; skid steer mount D08261 ..... **\$1,195**

**PLOWS - TIME TO GO!**

**JD A2700 4 BOTTOM PLOW;** 20" Blades; Spring Reset; Transport Wheels; Hydraulic Lift D08800 ..... **\$2,500**

**OLIVER 3 BOTTOM ROLLOVER PLOW;** Three 18" Moldboards D08750 ..... **\$1,999**

**JD A2700 5 BOTTOM PLOW;** coulters disks, 11L-14 tire D07997 ..... **\$1,699**

**OLIVER 546 5 BOTTOM PLOW W/BUSTER BAR;** 24" Moldboards; Coulters; Hydraulic Offset; Transport Wheels; D08887 ..... **\$1,295**

**OLIVER 588 4 BOTTOM PLOW;** Coulters; Transport Wheel; Spring Resets; D08780 ..... **\$2,500**

**ROCKPICKERS**



**RITE WAY ROCK PICKER;** Hydraulic Pick Up Tines; 3 Tines; Hydraulic Dump Box; Rock Deflector; Hard Surfaced Teeth; Hydraulic Swing Hitch; 3.2 Cubic Yard Capacity; 16.5L-16.1SL Tires D09229 ..... **\$16,995**



**RITEWAY RR900 ROCK PICKER;** Hydraulic Reel; Hydraulic Dump; Hydraulic Hitch; 3 Bar Reel; 16.5L-16.1SL Tires D09324 ..... **\$10,995**

**DOOSAN**

**THE FUEL ONLY DOOSAN WHEEL LOADER LEASE SPECIAL! UNDER \$20 AN HOUR!!!!!!**



**COVERS EVERYTHING BUT FUEL! MONTHLY LEASE PAYMENT COVERS ALL MAINTENANCE AND WARRANTY!**

**DOOSAN DL220-5 HIGH LIFT WHEEL LOADER, CAB AIR HEAT, RIDE CONTROL, 3 YARD BUCKET, JRB HYD QUICK COUPLER, HYD LOCKING FRONT DIFF, REAR CAMERA AND MUCH MORE!**

**\*TO QUALIFIED CREDIT. 36 MONTH/4,500 HOUR LEASE. INCLUDES FULL COVERAGE 36 MONTH EXTENDED WARRANTY AND SEI FULL MAINTENANCE PACKAGE.**

**\*SEE DEALER FOR DETAILS.**



**SPRAYER**



**WILLMAR EAGLE 8100 SPRAYER;** 90' boom' 3 nozzle body's; 5 section boom; MFWD; cab w/heat, AC, and radio; 800 gal stainless steel tank; 30 gal aux tank; chemical educator; foam markers; 380/90R46 Tires; includes JD Star Fire 300 Reciever D08020 ..... **\$28,495**

**SCHULTE BATWING MOWER**



**NEW SCHULTE FX-1800 BATWING MOWER;** 15' Cut Width; 540 PTO; Trailing Hitch; Front & Rear Chains; Super Suction 4" Blades; Duals Wheels; 6.5X10 Tires; D08842 ..... **CALL**

**NEW TIRES THAT NEED A NEW HOME!**

**ALLIANCE 420/85R28 ON NH RIMS** D08805 ..... **\$2,195**

**MICHELIN 12.4R24 ON NH RIMS** D08804 ..... **\$1,895**

**MICHELIN 18.4R30 ON NH RIMS** D08803 ..... **\$2,995**

**TRELLEBORG 420/85R38 ON NH RIMS** D08709 ..... **\$3,995**

**PTO GENERATOR**



**WINCO 50K AMP GENERATOR;** 540 PTO; On Trailer D09152 ..... **\$4,995**