

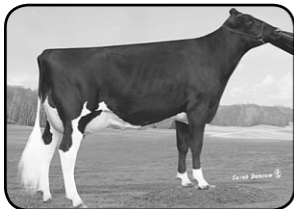
FOND DU LAC HOLSTEIN CLASSIC

Tuesday, September 24TH • 7:30 PM

At the Great Northern Sales Arena, Fond du Lac, WI

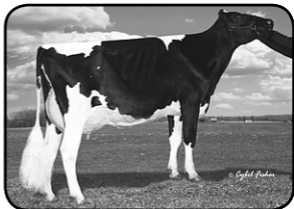
60+ High Producing Young Cows & Springing Heifers

AFFORDABLE YOUNG COWS ... LOTS & LOTS OF MILK!



Ms Apples Annesa-ET 2E-92

4-07 3x 349 42,640 4.5 1934 3.4 1450
Integral w/ 107 lbs. first test sells from
Annesa's VG-86 32,080 4.6 1480 dtr!



T&L-Haven Windbrook Trina EX-91

4-02 353 40,830 4.0 1628 3.0 1222
Trina's 30,310 Golden Dreams dtr sells
fresh with 130 lbs. first test!

The list of high producers goes on & on!

136 lbs. - DOORMAN

105 lbs. - BRADNICK

91 lbs. - MCCUTCHEN

146 lbs. - MERIDIAN

135lbs. - MOGUL

93 lbs. - MAVEN

139 lbs. - PETY

122 lbs. - ATWOOD

114 lbs. - MCCUTCHEN

116 lbs. - DUSK

103 lbs. - UNO

117 lbs. - VERSATILE

109 lbs. - HANGTIME

93 lbs. - MCCUTCHEN

83 lbs. - CORVETTE 2y

107 lbs. - HALOGEN

110 lbs. - WHISKEY

MANY FRESH 2 yr olds

Many Adapted to Freestalls

BRED HEIFERS: Beemer due to Denver from an EX 43,640 dam; Brady due to Doorman from an EX-94 28,532 dam; Sam-Red due to Josuper from VG 28,280 Durham; Crush due to Tatoo frm a VG-87 31,643 dam

Special Sale Feature:

MAHONEY HOLSTEINS MILKING HERD DISPERSAL

Outstanding Homebred Herd ... A True Breeder's Herd



Mahoney Sid Porsha *RC EX-93

3-04 347 31,850 3.8 1207 3.1 979
4 EX dams behind her Doorman 2 yr old
selling! Porsha's 2y full sister sells too!



Mahoney Destry Rae-Red EX-91

3-01 365 35,507 3.7 1306 3.1 1092
Rae's VG-86, 36,300 Impression sells
with 119 lbs. last test!

MORE HERD HIGHLIGHTS:

RED VG-89 EX-MS Olympian 31,180 at 3y & just fresh; 2 yr olds by Doorman, High Octane, McCutchen, Avalanche, Meridian & Union; Goldwyn from EX-92 & EX-94 dams over 40,000M; VG-87 32,340 Mogul with 105 lbs; EX-90 33,090 Olympian due this winter to Unstopabull-Red; and an EX 27,270 Goldsun with 96 lbs.

Profit-Minded Dairymen will

Appreciate these Cows & Affordable Prices

*Come fill your trailers with High Producing,
Low SCC cows! Don't be that person that says
"Oh, I should have been there"*

GREAT NORTHERN LAND & CATTLE CO., INC.

W4226 St. Rd. 23 E, Fond du Lac, WI 54937 • PH: 920-923-6991

Catalog online: www.greatnorthernsalesarena.com