

# What if You Could Relieve Neuropathy Pain without drugs, shots or surgery?

MIDWEST SPINE & NERVE CENTER

## Advances in Technology are bringing Hope to Diabetic & Peripheral Neuropathy Pain Sufferers

The Midwest Spine and Nerve Center utilizes multiple therapeutic modalities and techniques to provide long lasting pain relief. Our focus is to provide a nonsurgical drug free method for those suffering from pain associated with diabetic and peripheral neuropathy.

Patients who have been diagnosed with Peripheral Neuropathy, have experienced severe and chronic pain or any of the symptoms listed, may benefit from one of our pain relieving protocols utilizing red and near infrared light as well as other adjunct therapies offered at our clinic - all put together in a strategic care program designed specifically for you.

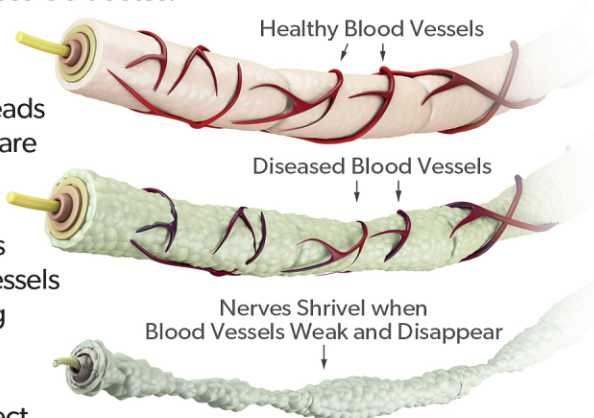
Low Level Light Therapy (LLLT) is an emerging treatment modality for management of neuropathic pain. There have been multiple studies published that focused on finding evidence on the effectiveness of LLLT for treatment of painful diabetic neuropathy. The evidence obtained through these studies shows LLLT has a positive effect in controlling diabetic neuropathic pain.

\*These studies may be accessed thru the search engine PubMed.\*

## Neuropathy Nerve Damage

Peripheral neuropathy can result from problems such as traumatic injuries, infections, metabolic problems and exposure to toxins. One of the most common causes is diabetes.

Poor blood circulation may also be a major contributing factor that leads to neuropathy. Diabetics are especially susceptible to neuropathy due to the damage high sugar levels may inflict on the small vessels responsible for delivering blood to the nerves. High glucose levels are believed to adversely affect the amount of oxygen provided to the nerves thus leading to neuropathy.



## Neuropathy is a progressive condition. Early treatment is critical.

Neuropathy is a progressive condition, meaning it tends to get worse with time. If left untreated for too long, the nerve damage can reach a point where there is simply nothing that can be done. This is why early detection and treatment of peripheral neuropathy is critical to getting the best results.

## Know the Neuropathy Symptoms

- ☒ Numbness in feet
- ☒ Burning or pain in feet
- ☒ Leg cramping
- ☒ Sharp electrical-like pain
- ☒ Pain or difficulty walking
- ☒ Lack of coordination
- ☒ Difficulty sleeping from leg & foot discomfort
- ☒ Prickling or tingling feeling in feet
- ☒ Extreme sensitivity to touch, even light touch
- ☒ Muscle weakness or paralysis if motor nerves are affected

**Call 608-338-0621 to Schedule a No Obligation Consultation**

Space is limited to first 20 callers- Call today

At Midwest Spine and Nerve Center, we are committed to getting you well and getting your life back on track again. So that you can learn more about our facility and our procedures, we invite you to call us at **608-338-0621** to schedule an appointment to see if you are a candidate for this procedure.

**Chris Sekanick, D.C. | Sam Sekanick, D.C.**  
**midwestspineandnerve.com**

Respondents in this promotional offer are under no obligation to participate or purchase further services after use of promotion. Offer void or restricted when prohibited by law, deemed medically unnecessary or inappropriate by attending clinicians. Max redeemable offer: one per person per year. Offer details: 1 complimentary consultation.



## What our patients are saying...

"I have been going to Midwest Spine and Nerve Center for over one year for various treatments of peripheral neuropathy in my feet and legs. Although my doctor told me I would have to live with peripheral neuropathy for the rest of my life and had no solutions for me, I did not accept that answer and have found relief in the treatment at MSNC. Dr. Sekanick and Jen have been great to work with. I look forward to my treatment sessions." - *Karla - Verona, WI*

"I had been having problems with tingling in the bottom of both feet for over a year. I would experience this sensation when I would put my feet up at night to watch TV. At first it was just the occasional tingle and wouldn't last very long. However, as time went by these sensations would last longer and I also started to feel this when I went to bed at night. It would often keep me awake. Our daughter recommended Midwest Spine and Nerve Center to me as she and her husband had both been patients there and had good results. I started going and completed 20 sessions. I experienced some relief pretty quickly. The staff are friendly, professional and explain what they are doing every step of the way. I would highly recommend Midwest Spine and Nerve Center to anyone who needs this kind of treatment." - *Margaret C. - Waunakee, WI*

## A number of factors can cause Peripheral Neuropathies

It's not always easy to pinpoint the cause of Peripheral Neuropathy. A number of factors can contribute. Please call today to learn if this therapy will help you.

### Diabetes

Diabetes is the most common cause of Peripheral Neuropathy and can occur even in Diabetics who keep their blood sugar levels under control.

### Trauma or pressure on the nerve

Neuropathy commonly occurs after injury to nerves in the legs, and in patients diagnosed with Reflex Sympathetic Dystrophy due to trauma.

### Circulation disorders

Poor circulation leading to foot ulcers, and blockage of blood supply to the leg can also cause Neuropathy.

### Chemotherapy

Patients undergoing chemotherapy often develop Neuropathy during or after the treatment.

### Alcoholism

Many alcoholics develop Peripheral Neuropathy due to nerve ending damage.

### Restless legs syndrome

Peripheral Neuropathy can be an associated medical condition for patients diagnosed with RLS

### Diseases

Autoimmune diseases, kidney disease, liver disease and thyroid conditions can also cause Peripheral Neuropathy, as can certain viral or bacterial infections, including Hepatitis C and HIV/AIDS.



**MSNC**  
MIDWEST SPINE & NERVE CENTER

Midwest Spine and Nerve Center offers Neuropathy Therapy at convenient Eastside and Westside Madison locations.



### Now With Two Convenient Locations!

**West Clinic** - Just off the Beltline near Greenway  
1111 Deming Way Suite 201  
Madison, WI 53717

**East Clinic** - just off I-39/I-90  
4602 S. Biltmore Lane Suite 100  
Madison, WI 53718