

## GRAB ONE OF THESE HOPPING GOOD DEALS!!



**2013 NH T8.330**, Power Shift, 30 mph, Front and rear duals, 5 Hyd remote, 540-1000 PTO, cab and front axle suspension, C18740..... **\$90,999**  
3.90% For 48 Months to Qualified Buyers



**2011 NH T8.390**, Power Shift, 30 mph, cab and front axle suspension, Rear Duals, Front 3pt and PTO ready, 540-1000 PTO, 5 Hyd remotes, C18748..... **\$107,595**  
3.90% For 48 Months to Qualified Buyers



**2011 NH T8.390**, Power Shift, 30 mph, cab and front axle suspension, Rear Duals, Front 3pt and PTO ready, 540-1000 PTO, 5 Hyd remotes, C18749..... **\$104,995**  
3.90% For 48 Months to Qualified Buyers



**NH BB940A**, roto cutter, Single axle, Bale eject, applicator, C16374..... **\$25,995**  
0% For 3 Years to Qualified Buyers



**ARTSWAY 475 GRINDER MIXER**, 15 ft unload Auger, scale, 3 Screens, 105 B.U., 540 PTO..... **\$7,945**



**2004 CASE IH LBX 332**, Packer, Cutter, Single axle, applicator, Last bale eject, C16981 . **\$27,500**  
WITH 0% FOR 36 MONTHS TO QUALIFIED BUYERS



**AULICK INDUSTRIES 48**, Ultimate belt trailer, Tandem axle with rear tag axle, roll tarp..... **\$22,500**



**CASE IH 900**, 3pt mount, 12 row planter, 30 inch row, twin seed box, Bean and Corn drums, 1000 PTO pump, IT'S CLEAN!..... **\$6,395**



**IH735**, Variable width, 5 bottom, Auto reset, C17266..... **\$995**



**JD 2600**, 4x18 Plow, auto reset, 3pt mount, C18223..... **\$895**



**WASTE HANDLER 5600**, Manure tanker, Tandem axle, 23.1x16 tires, Top discharge, C18476... **\$6,995** NEEDS WORK



**JD 3700**, 10x18 bottom, on land hitch, auto reset, cover boards, coulters, split tandem transport, C18544..... **\$12,450**



**JD 630**, 30ft disk, 24 inch blades, extra clean, C18316..... **\$14,850**



**JD 750**, No till drill, 15ft wide, front dolly wheels, 7 inch spacing, 24 units, C18828..... **\$10,995**



**22ft Spring Tooth Drag**, walking tandems, Hyd Lift and fold.... **\$2,995**



**LEON Ft Wide**, 540 PTO, Drive Rock Picker..... **\$2,995**



**SUNFLOWER 4010**, 7 Shank ripper, Rock plex, Front gang, Hyd depth control..... **\$5,995**



**TYLER 4300 FERTILIZER TRUCK**, Stainless steel box, 3208 diesel eng, Allison 5 speed auto trans, C18018.... **\$5,995**



**2016 NH RB450**, oto cutter, wide pickup, Silage Special, caster wheels, 6192 bales, C17672..... **\$24,850**  
0% 36 FOR MONTHS TO QUALIFIED BUYERS



**2015 NH 330**, packer/cutter, Tandem axle, last bale eject, 22,000 bales, Harvestech applic., C17769... **\$62,500**  
0% FOR 36 MONTHS TO QUALIFIED BUYERS



**2015 NH RB460**, Roto Cutter, wide pickup, Silage Special, crop roller, Hyd header pickup, 13,260 bales, C17935..... **\$22,500**  
0% FOR 36 MONTHS TO QUALIFIED BUYERS



**2014 NH H7230**, 10' 4" cut, rubber rolls, Hyd pole swing, draw bar swivel hitch, 540 PTO, 1 owner, extra nice, C18712. **\$17,995**  
0% FOR 36 MONTHS TO QUALIFIED BUYERS

## JUST IN

## ON HAND NOW AT SEI THORP



**J&M TF212-336**, 33ft Torsion Flex soil crumbler, twin rollers, Hyd Fold, Rock plex, Front gang, Hyd depth control..... **\$6,995**



**Used CAT Track Challenger 75**, C/H/A, 75 CHA, 10 speed power shift, 325 HP, 4 Hyd remotes, 10779 HK runs and drives good, good undercarriage..... **\$27,500**



**2016 MEYER 3245 V MAX SPREADER**, 450 B.U., third Auger, side ext, tandem axle, 14L tires, 1000 PTO.... **\$19,450**



**GREAT PLAINS UD2600**, Ultra disk, 24in concave blades, Maintenance free, tapered bearings, 7in max depth with rear caster rollers..... **CALL**



**GREAT PLAINS 1006NT**, 10ft, no till drill, electronic acre meter, 4 speed gear box with grass seed..... **SAVE**



**GREAT PLAINS 1800 TURBO MAX**, vertical tillage, 18ft, 0 to 6 degree, Hyd control gauge, angle rear rolling spike basket, Hyd control rear reel finisher, Hyd tongue..... **CALL**

## USED TILLAGE

## AROUND THE LOT



**BRILLION 25ft CULTIMULCHER**, 20 rollers, scrapers front and back, w/center teeth..... **\$27,995**



**JD 724**, 21ft, Field finisher, 9in sweeps, front disk, 5 bar spike tooth harrow..... **\$5,950**



**LANDOLL 850**, 14ft Field Finisher, Front rock flex gangs, 5 bar finisher..... **\$8,250**



**JD 215**, 15ft disk, 20in blades with scrapers..... **\$3,750**



**H&S 235 Box SPREADER**, Single axle, 22.5 tires, HYD end gate, dual cylinders..... **\$7,850**



**HYDRO ENGINEERING HOSE REEL**, tandem axle, will hold 1 mile of 6" hose..... **\$11,500**



**JD 235**, 25' rock flex disk, needs work..... **\$2,450**



**IH 770**, 14ft offset disk, good blades..... **\$3,650**



**KRAUSE TL 24ft FIELD FINISHER**, 24ft Hyd Control on front disk, knock off sweeps, 5 bar rear finisher, rear hitch..... **\$21,850**



**CASE IH 3950**, 29ft rock flex disk, 7 1/2 inch spacing, 3 bar rear finisher..... **\$14,250**



**NEW HOLLAND T8.410**, 2015, 19 Spd. Powershift, 50 KPH, Nav II receiver. **ONLY 1,052 HOURS.....\$196,500**



**NUHN 6000 MANURE TANK**, tandem axle, 30.5L x R32 tires, Tank is in very good condition..... **\$32,500**



**SUNFLOWER 6220**, 18ft soil finisher, Hyd depth control on front disk, 6 bar spike tooth, rear finisher..... **\$13,995**



**BRILLION 15ft PULL TYPE PACKER**, C18627..... **\$1,575**



**MF 424 14ft GRAIN DRILL**, Double disc, rear grass with press wheels..... **\$4,995**



**McCORMICK GRAIN DRILL**, 10ft, grass seed, rope pull lift..... **\$1,675**



**BRILLION 12ft SEEDER**, Single box hyd. lift..... **\$8,000**



**LOFTNESS 20 FT STALK CHOPPER**, 1000 PTO, Rear Road lights, Very good condition..... **\$10,500**

## NEED A USED TRACTOR - CHECK THESE OUT!!



**NEW HOLLAND T9.450**, 2013, with only 823 hours, Good tires, 4 remotes, diff lock..... **\$166,500**

**MF 35 SPECIAL UTILITY TRACTOR**, 4 cyl. Gas, 3 point, 540 PTO, loader, has good tires..... **\$3,795**  
**NEW HOLLAND T8.380**, 50KPH, power shift, luxury performance cab, Front 3 point and PTO, 5 remotes, 540 and 1000 PTO, only 1,730 hrs..... **\$172,500**  
**FARMALL 560**, gas, wide front end, straight drawbar, flat top fenders..... **\$1,695**

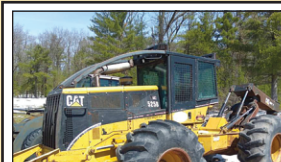
**WHITE 6175 WORKHORSE**, FWD, Cab, heat & air, 18 speed power shift, 3 remotes..... **\$39,995**  
**ALLIS CHALMERS 8050**, 2 wheel drive, cab, heat & air, 6 speed pwr shift..... **\$13,989**  
**CASE IH 9330**, Row Crop articulating tractor, PTO & 3 point, 4 sets of remotes..... **\$34,995**  
**FENDT VARIO 824**, 50 kph, front PTO & 3 point, 540 & 1000 PTO, 4 sets remotes..... **\$139,500**

**NEW HOLLAND 8670**, 2000, super steer, 4 hyd remotes, 540 & 1000 PTO, Tires 95%..... **\$52,900**  
**NEW HOLLAND T8.275**, 2012, 19 speed power shift, rear duals, front weights, only 1552 hours..... **\$94,500**  
**NEW HOLLAND T8.320**, CVT Transmission, front PTO and 3 Point, Luxury cab..... **\$165,000**

## WHEN IT COMES TO CONSTRUCTION COME TO SEI THORP!!



**FABTEK 133 TRACK TREE HARVESTER**, new injector & fuel lines, 4 roller head, 3rd measuring wheel..... **\$52,000**



**'05 CAT 525B GRAPPLE SKIDDER**, new front rubber, C/H/AC, air ride seat..... **\$39,995**



**JD 550G DOZER**, open station, Brand New undercarriage, 18" pads, Single owner municipality owned... **\$29,000**



**CAT 312 B**, 24" dirt bucket, 36" ditching Bucket, Hydraulic Quick Coupler, 24" wide pads, Work lights, Aux Hydraulics down the boom, straight travel..... **\$35,995**

## DOOSAN



Looking to upgrade? Perfect timing. Check out how our special offers can help you buy your newest machine with confidence.

**SWIDERSKI SEI EQUIPMENT INC**

CONTACT **DARREN MERTENS**  
**715-370-2707**  
For A Demo Today

# SEI

**SALES  
PARTS  
SERVICE**

# THORP

**715.669.5255**  
**201 S Financial St.**  
**Thorp, WI 54771**

Franchised Dealer for: New Holland • Massey Ferguson • White • Sunflower • Gleaner • H&S • Meyer • Bobcat  
Brillion • Westfield • J&M • Kelly Ryan • Hesston • Haybuster • Doosan • Meyers • Kioti • Schulte • EZ Trail • Maxxd Trailers

**www.swiderskiequipment.com**  
Hours: Monday - Friday 7:30am to 5:00 pm. Saturday 7:30 am to 1:00 pm.  
Models, years and hours shown on all equipment are estimated.