



Coffeeshouse takes "local" to a new level with local...

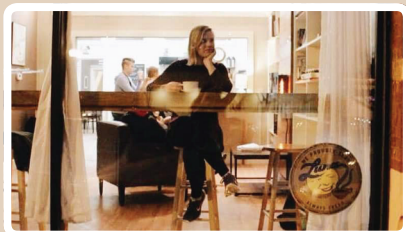
**OWNERS • COFFEE • ARTISTS • AUTHORS
FOOD • MUSICIANS**

"The Open Door Coffeeshouse is the home away from home for local residents and those visiting. Its passion is to feature local brands and give back to the community. Its warm smells, friendly baristas, and welcoming environment hold a sophisticated-rustic feel, while holding a cup of delicious comfort in your hands.

The comfort in your hands is Luna Coffee, a local roaster that is fair trade, with organic options. In their newly renovated location, you'll find artwork, books, and food by members of the community.

Enjoy a day in downtown Mayville, exploring the unique shops, eating at one of the impressive restaurants, walking along the river and ending your walk with an espresso (or non-coffee drink) at The Open Door".

We look forward to meeting you!



Hours: M-Th 7am-7pm, Fri 7am-9pm, Sat 7am-7pm, Sun 8am-4pm • 20 S Main St, Mayville, WI 53050