

GLEAM INSTALLATIONS

COLOR CURRENTS

ARTIST—CORY BARR, OAKLAND, CA

Color Currents allows participants to create a constantly changing mural using their bodies and its motion. Quick motions create currents that cause streams of color to emerge. Slower, smooth motions let visitors paint with their bodies while altering the color currents. Visitors can work together to discover hidden collaborative features.

FUN FACT: THE PIECE WORKS WITH A SINGLE PARTICIPANT. HOWEVER, SOME OF THE ASPECTS OF THE PIECE CAN ONLY BE EXPERIENCED BY COLLABORATING WITH OTHER VISITORS.



ATOMIC FOREST

ARTISTS—KATHERINE CANNISTRA & GEOFF LANDRUM, HALES CORNERS, WI

The Atomic Forest is comprised of free-standing “trees,” each with floral attributes at the top of a “stem.” A canopy of networked LEDs animates patterns that visualize the nano-processes of our digital interconnectedness. These representations of unbridled technology are juxtaposed in a form that resembles a blooming flower with stamen poised for reproduction.

FUN FACT: MOST OF ATOMIC FOREST WAS CREATED WITH THE ASSISTANCE OF TEN MAKERS AT THE MILWAUKEE MAKERSPACE WHERE MEMBERS CONCEIVE, COLLABORATE, AND CREATE TOGETHER.



DOUBLE HELIX II

ARTISTS—KEVIN JORDAN & GEORGE NEIL, WILLIAMSBURG, VA

Double Helix II is a kinetic light sculpture featuring an interactive torsional wave machine allowing visitors to launch waves which travel in slow motion down the 90-foot artwork. Simultaneously, thousands of programmed LEDs provide a mesmerizing active display in waves of color on the 64 transverse ribs suspended 20 feet above the Great Lawn.

FUN FACT: THIS WORK INVOLVED ALMOST HALF A YEAR OF EFFORT TO COMPLETE AND IS THE SECOND MAJOR ITERATION OF THE TORSIONAL WAVE DISPLAY.



SWF(LIGHT)

ARTIST—JEN FULLER, PORTLAND, OR

Bridging technology and nature, SWF(Light) is a kinetic mobile composed of 100 handmade glass birds, digitally projected with video and an audio landscape to create an uplifting and provocative experience housed within Olbrich Botanical Gardens’ iconic Thai Pavilion. Inspired by the Vaux swift bird flight murmuration that transpires yearly next to the artist’s studio, memories of painted Thai umbrellas from the artists childhood living in Thailand.

FUN FACT: THIS INSTALLATION IS INSPIRED BY THE VAUX SWIFTS ANNUAL ROOSTING IN THE CHIMNEY AT THE CHAPMAN SCHOOL IN PORTLAND LOCATED ACROSS FROM THE ARTIST’S STUDIO.



BIFRÖST

ARTISTS—WISCONSIN COMMUNITY BURNERS, MADISON, WI

Norse myth and legends tell of a burning rainbow bridge that connects the realms of man and the gods. This shimmering path will transport you from this mortal world to a heavenly place.

FUN FACT: THE PEX MATERIAL DIFFUSES THE LIGHT OF THE LEDS AND ILLUMINATES THE WHOLE TUBING AMPLIFYING ITS EFFECT.

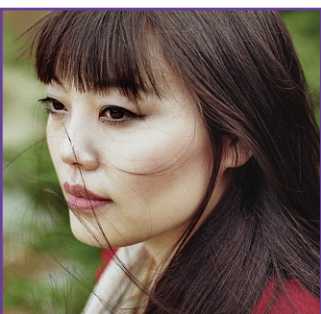


BREATHE

ARTIST—JOHN E. BANNON, CHICAGO, IL

Breathe. A perspective based neon light installation whose imagery depicts an image of a young girl blowing the seeds off of a dandelion when seen from the West and looking southeast. When viewed from the North and facing southwest, the tubes will align to depict a mature woman smelling a rose.

FUN FACT: THE IMAGERY IS BASED ON THE ARTISTS’ SISTER AND HER DAUGHTER.



To afar the water flows

ARTIST—YUGE ZHOU, CHICAGO, IL

To afar the water flows reconstructs the city into a high-rise garden utopia, emphasizing a genuine harmony between man-made structures and their natural surroundings. A decade ago, I left my home in Beijing and came to America to begin an immigrant’s journey. To afar the water flows is both a visual diary of this experience and a loving portrait of American cities.

FUN FACT: THE SCENES IN THE WORK WERE COMPOSED BY FOOTAGE FROM THE ARTIST’S EVERYDAY WALKS IN CHICAGO AFTER RELOCATING TO THE CITY. IT’S LIKE A VISUAL DIARY.



SPHERE OF INFLUENCE

ARTIST—PAUL HAYDEN, STONE BANK, WI

Push the button. Did you influence the sphere or did it influence you with its response? Or did somebody really want to make a dome with lights on it and influenced you into thinking it had a higher purpose? Such is the silliness with social media influencers...

FUN FACT: THE DOME CONTAINS 250 PIPES AND 1,500 INDIVIDUALLY CONTROLLABLE LED LIGHTS.