

**City of Osage Beach**  
**Agenda Item Summary**

**Date of Meeting:** March 20, 2025  
**Originator:** Andrew Bowman, City Engineer  
**Presenter:** Andrew Bowman, City Engineer

---

**Agenda Item:**  
Presentation - Airport Master Plans for Lee C. Fine and Grand Glaize Airports

**Requested Action:**  
Presentation

**Ordinance Referenced for Action:**  
Not Applicable

**Deadline for Action:**  
Not Applicable

**Budgeted Item:**  
Not Applicable

**Budget Line Information (if applicable):**  
Not Applicable

**Department Comments and Recommendation:**  
Not Applicable

**City Attorney Comments:**  
Not Applicable

**City Administrator Comments:**

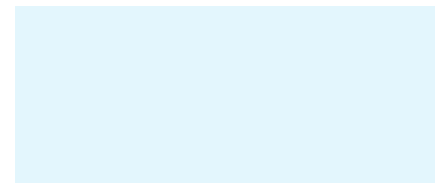


# Master Plan Update

Lee. C. Fine (AIZ) & Grand Glaize (K15)  
Airports

---

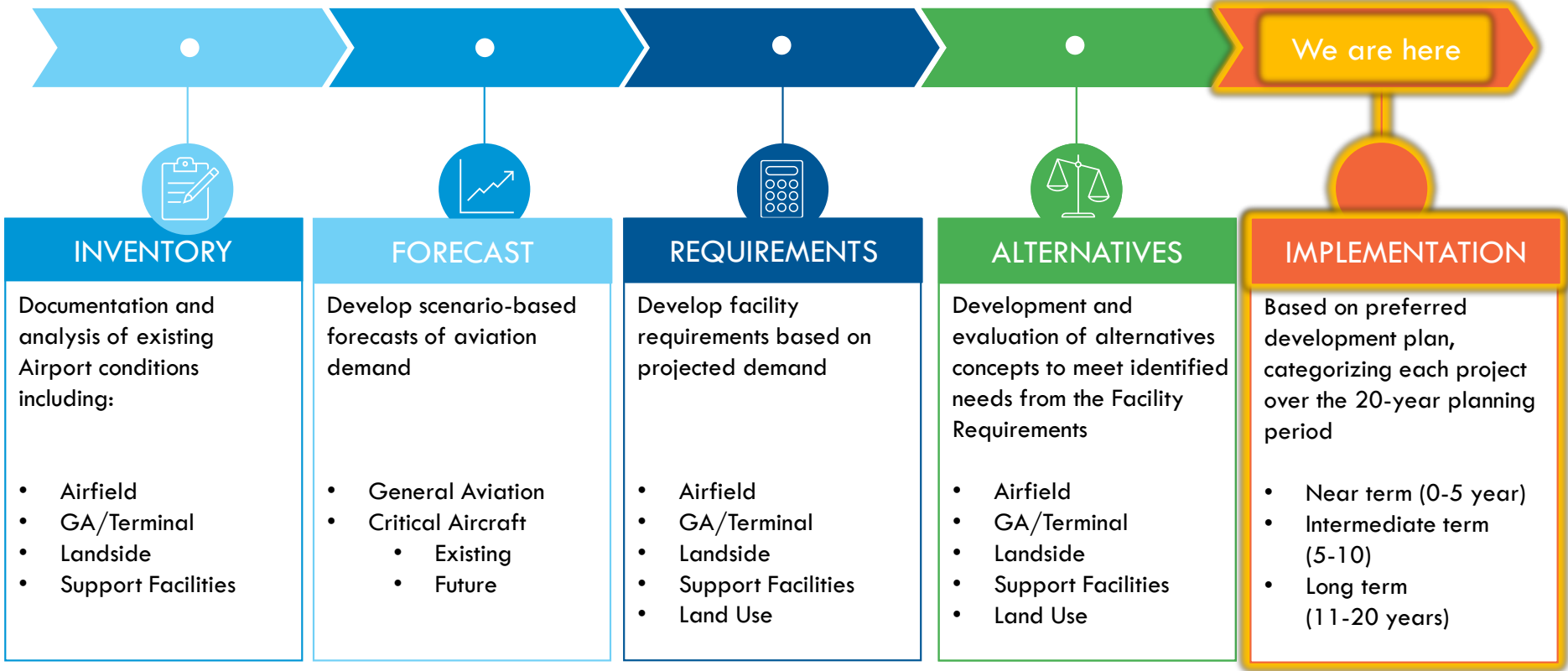
March 20, 2025 - **DRAFT**



# Agenda

- Master Plan Project Progress
- Summary of Forecast Projections
- Summary of Master Plan Recommendations
- Implementation Plan
- Next Steps

# Master Plan Project Progress



## Summary of Grand Glaize (K15) Forecast Projections

- Total operations are projected to grow from **3,028** to **3,376 (+10%)** over the 20-year planning horizon
- Based aircraft are projected to grow from **10** to **18 (+44%)**
- Up-gauge Runway Design Code (RDC) from **AI** to **All**



## Summary of Lee C. Fine (AIZ) Forecast Projections

- Total operations are projected to grow from **5,410** to **6,278 (+14%)** over the 20-year planning horizon
- Based aircraft are projected to grow from **7** to **12 (+42%)**
- Up-gauge Runway Design Code (RDC) from **CII** to **CIII**



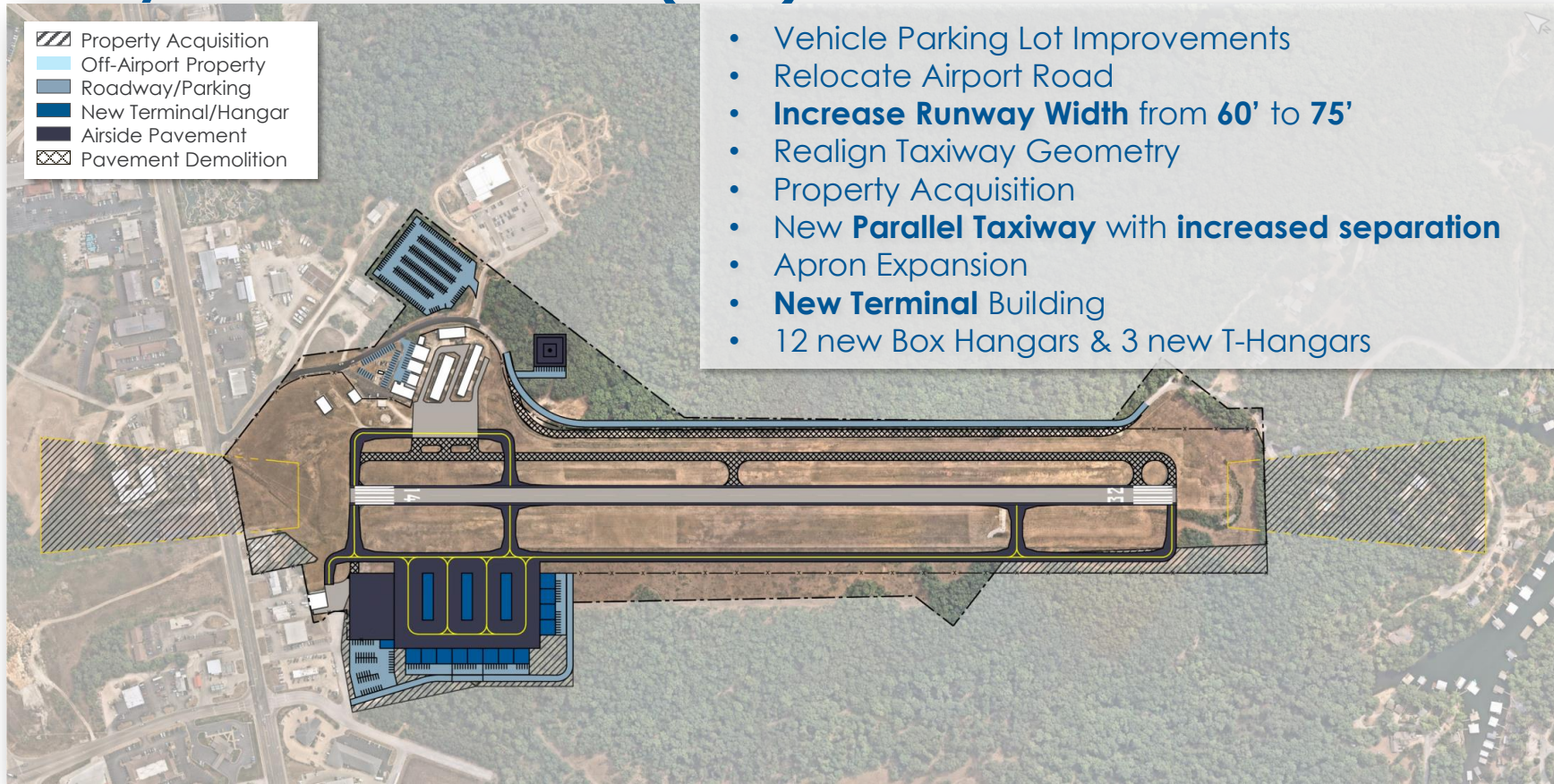
# Summary of Grand Glaize (K15) Recommendations

- 1 Increase runway width from **60** to **75** feet
- 2 New full-length parallel taxiway (**increased separation**)
- 3 New hangar **development**
- 4 **Additional apron space** for itinerant aircraft
- 5 **New terminal** building
- 6 Vehicle parking lot **improvements**

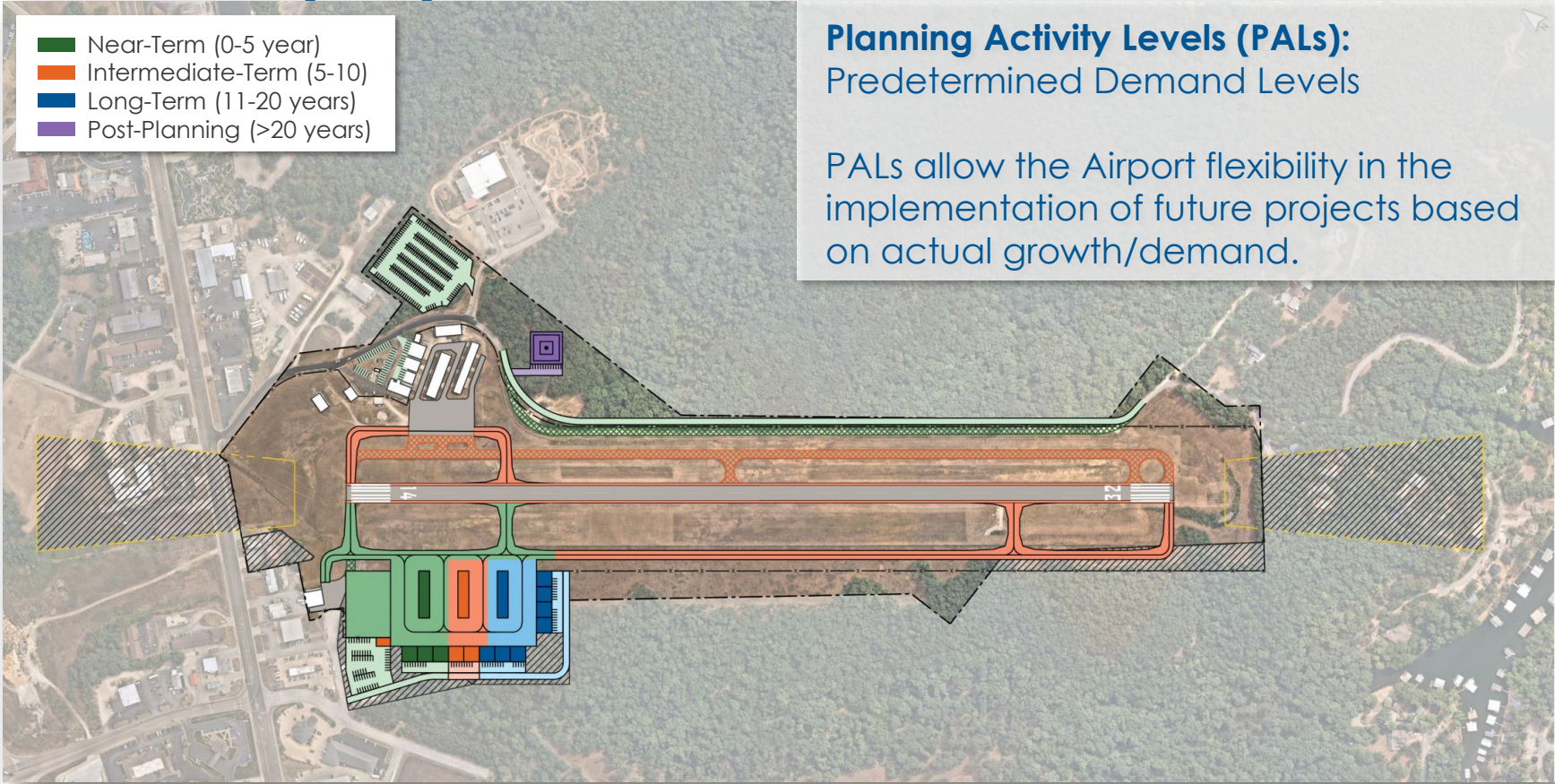
# Grand Glaize (K15) Existing Conditions



# Summary of Grand Glaize (K15) Recommendations



# Grand Glaize (K15) Implementation Plan



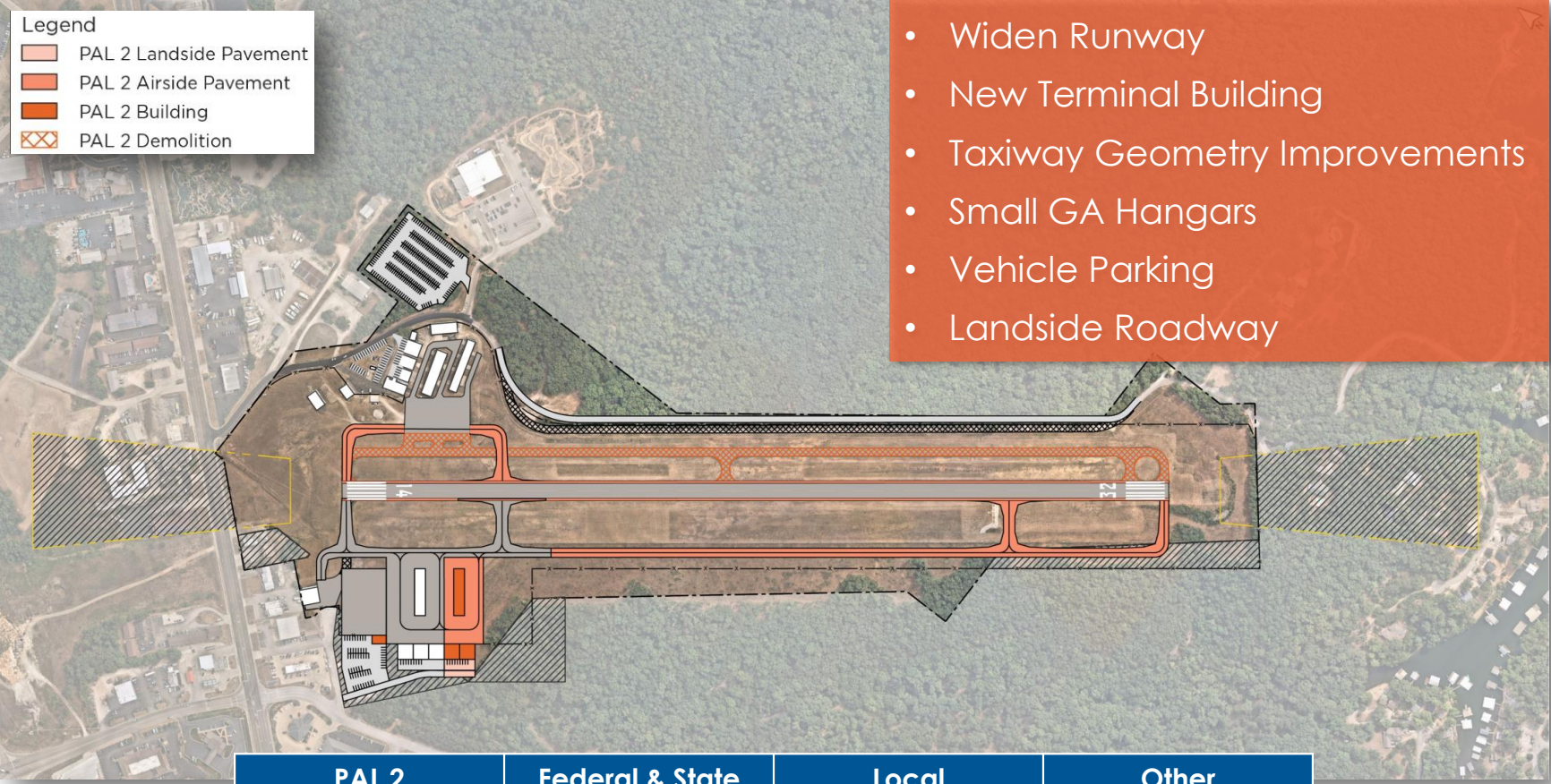
# Grand Glaize (K15) Implementation Plan



- Vehicle Parking Lot Improvements
- Taxiway Geometry Improvements
- One New T-Hangar
- Three Small Box Hangars
- Apron Expansion
- Road Relocation

PAL 1	Federal & State	Local	Other
\$0.0 million	\$0.0 million	\$0.0 million	\$0.0 million

# Grand Glaize (K15) Implementation Plan



- Widen Runway
- New Terminal Building
- Taxiway Geometry Improvements
- Small GA Hangars
- Vehicle Parking
- Landside Roadway

PAL 2	Federal & State	Local	Other
\$0.0 million	\$0.0 million	\$0.0 million	\$0.0 million

# Grand Glaize (K15) Implementation Plan



PAL 3	Federal & State	Local	Other
\$0.0 million	\$0.0 million	\$0.0 million	\$0.0 million

# Grand Glaize (K15) Implementation Plan



- EVTOL Vertiport
- Vehicle Parking

Post-Planning	Federal & State	Local	Other
\$0.0 million	\$0.0 million	\$0.0 million	\$0.0 million

# Summary of Lee C. Fine (AIZ) Master Plan Recommendations

1

Additional apron space for itinerant aircraft

2

Additional hangar development

3

Hangar access developments

4

Vehicle parking lot improvements

# Lee C. Fine (AIZ) Existing Conditions

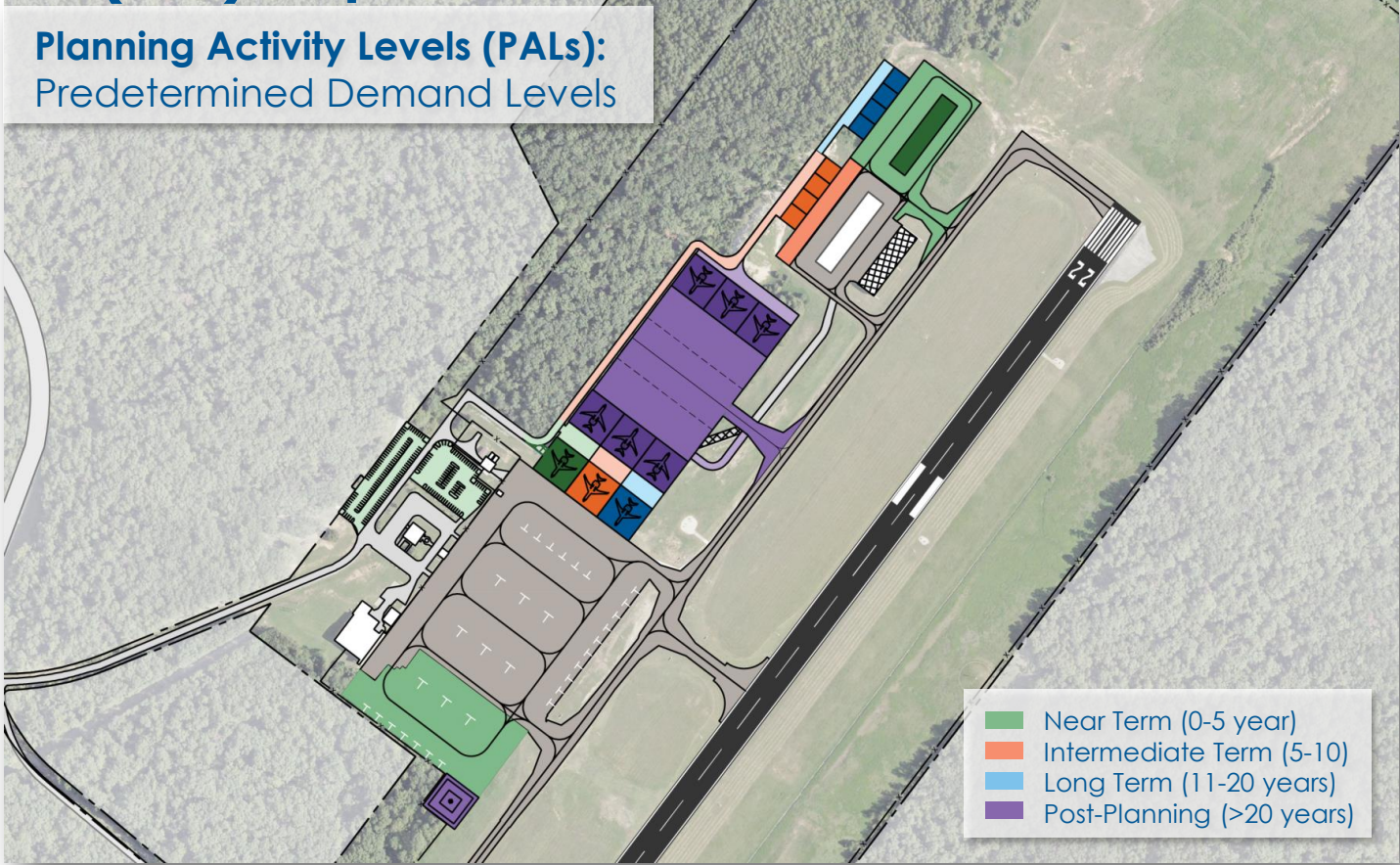


# Summary of Lee C. Fine (AIZ) Master Plan Recommendations

- Vehicle Parking Lot Improvements
- Apron Expansion
- 3 Corporate Hangars
- 8 Box Hangars
- 1 T-Hangar (7 units)
- Post-Planning Development

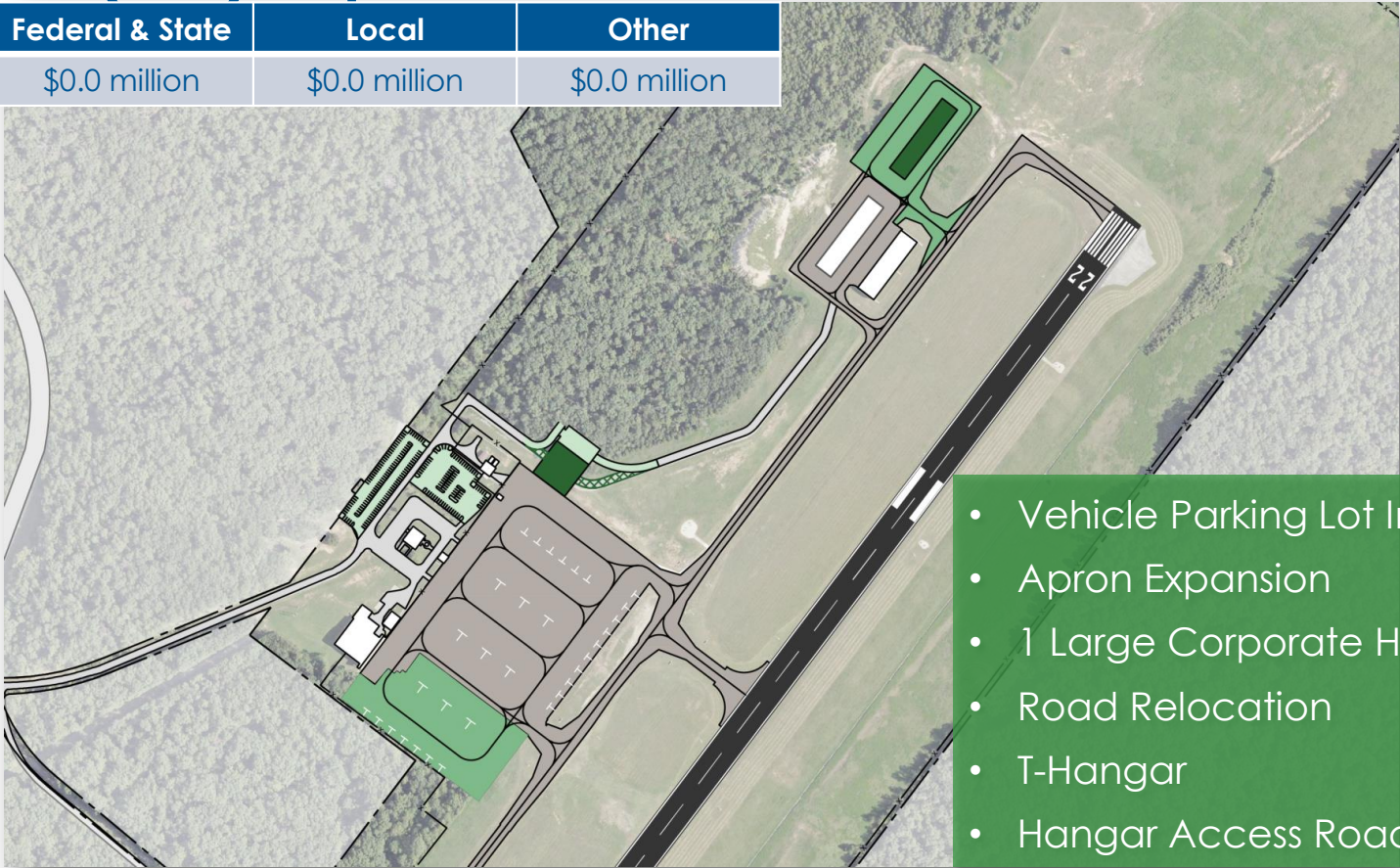


# Lee C. Fine (AIZ) Implementation Plan



# Lee C. Fine (AIZ) Implementation Plan

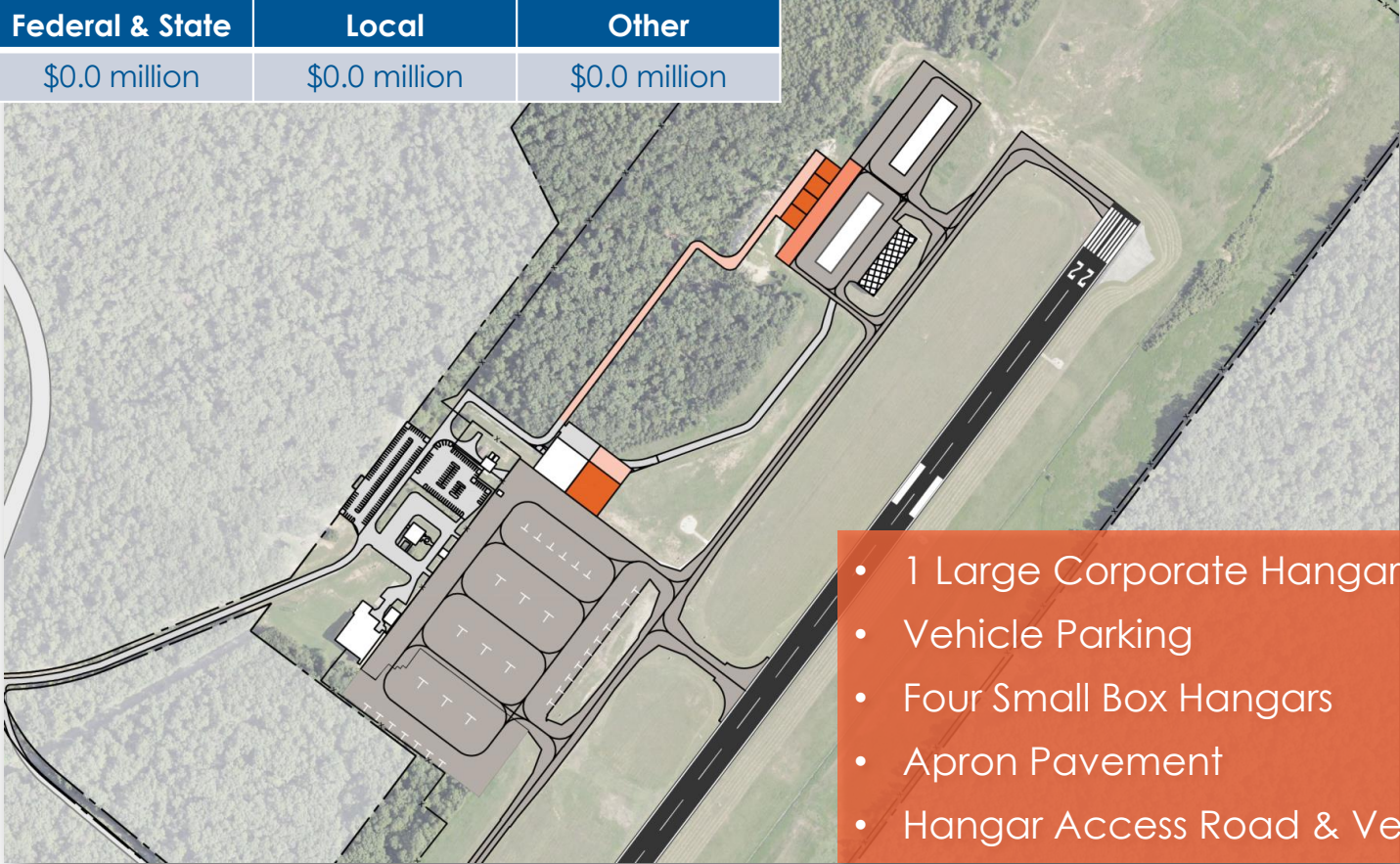
PAL 1	Federal & State	Local	Other
\$0.0 million	\$0.0 million	\$0.0 million	\$0.0 million



- Vehicle Parking Lot Improvements
- Apron Expansion
- 1 Large Corporate Hangar
- Road Relocation
- T-Hangar
- Hangar Access Road

# Lee C. Fine (AIZ) Implementation Plan

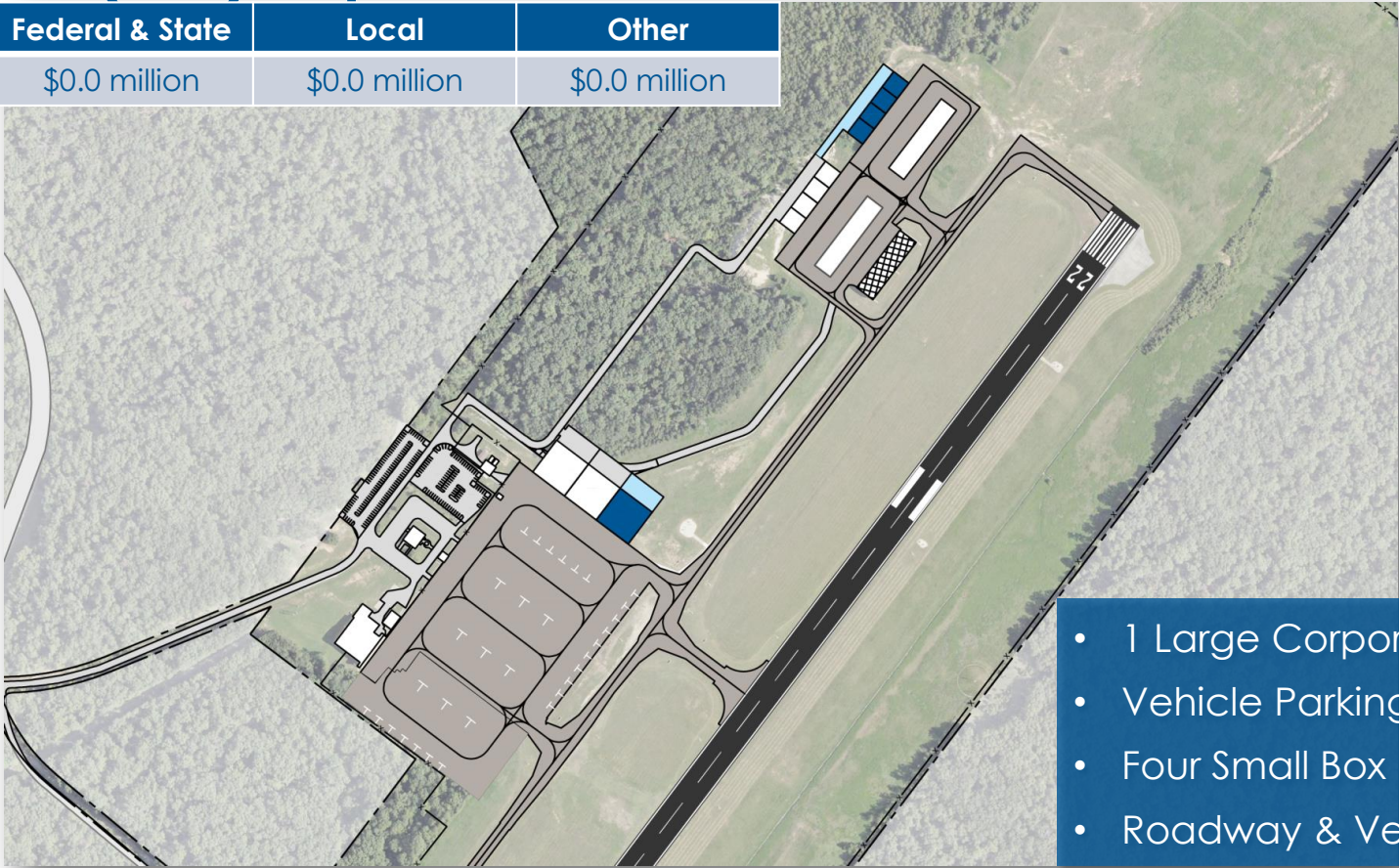
PAL 2	Federal & State	Local	Other
\$0.0 million	\$0.0 million	\$0.0 million	\$0.0 million



- 1 Large Corporate Hangar
- Vehicle Parking
- Four Small Box Hangars
- Apron Pavement
- Hangar Access Road & Vehicle Parking

# Lee C. Fine (AIZ) Implementation Plan

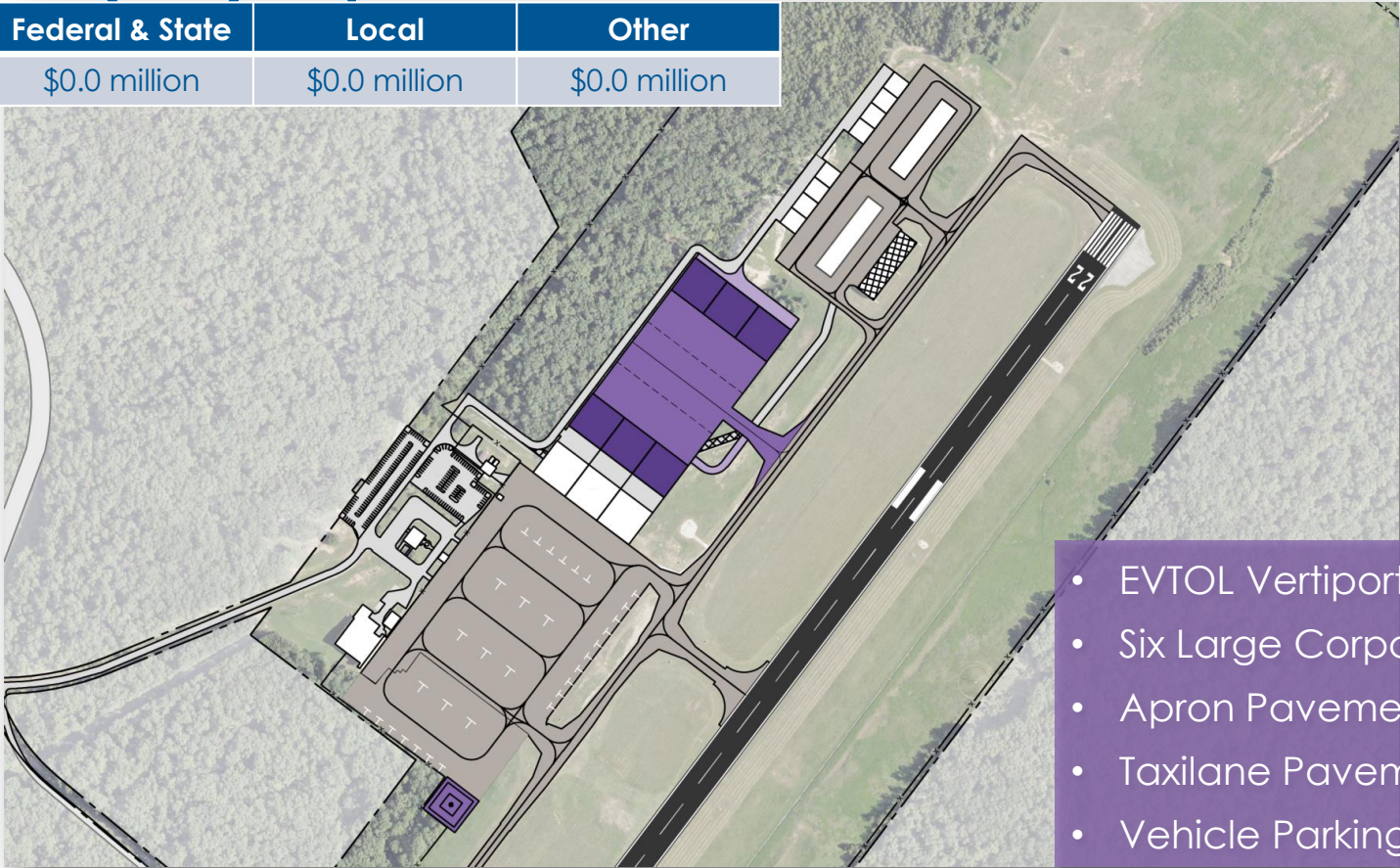
PAL 3	Federal & State	Local	Other
\$0.0 million	\$0.0 million	\$0.0 million	\$0.0 million



- 1 Large Corporate Hangar
- Vehicle Parking
- Four Small Box Hangars
- Roadway & Vehicle Parking

# Lee C. Fine (AIZ) Implementation Plan

Post-Planning	Federal & State	Local	Other
\$0.0 million	\$0.0 million	\$0.0 million	\$0.0 million



- EVTOL Vertiport
- Six Large Corporate Hangars
- Apron Pavement
- Taxiway Pavement
- Vehicle Parking

## Next Steps

- Cost Estimates
- Complete Master Plan Report
- Submit Airport Layout Plan (ALP) for MoDOT Approval
- Submit Exhibit A Property Map for MoDOT Approval