



# Derby Fire Rescue

715 E Madison Ave, Derby, KS 67037

Phone: 316-788-3773

11/4/2025

## One Learning Academy

201 N DERBY Ave

Derby, KS 67037

**Inspection #** 16049

**Inspection Type:** Annual \ Periodic

**Property #:** 107

**Occupancy Type:** School

**Survey #:** IR 0494

## BUILDING SERVICES AND SYSTEMS

Regulation	Violation	Due Date
1) 603.2.2	Open electrical terminations - Open junction boxes and open-wiring splices shall be prohibited. Approved covers shall be provided for all switch and electrical outlet boxes.	11/18/25

### Compliance

**Inspector Remark:** Basement teacher lounge.

2) 603.5.2	Application and use - Relocatable power taps and current taps shall be directly connected to a permanently installed receptacle. Exceptions: 1.Where approved for use in a Group A occupancy or in a meeting room in a Group B occupancy, not more than five relocatable power taps shall be permitted to be connected together or connected to an extension cord for temporary use to supply power to electronic equipment. 2.Current taps and relocatable power taps shall not be required to connect directly to a permanently installed receptacle outlet where used for 90 days or less for the purpose of testing the performance of such devices.	11/18/25
------------	--	----------

### Compliance

**Inspector Remark:** Daisy chain powering fridge in basement teacher lounge.

## FIRE PROTECTION AND LIFE SAFETY SYSTEMS

Regulation	Violation	Due Date
3) 901.6	Inspection, testing and maintenance - Fire protection and life safety systems shall be maintained in an operative condition at all times, and shall be replaced or repaired where defective. Nonrequired fire protection and life safety systems and equipment shall be inspected, tested and maintained or removed in accordance with Section 901.8.	11/18/25

### Compliance

**Inspector Remark:** No fire alarm or sprinkler system present in the building.

## MEANS OF EGRESS

Regulation	Violation	Due Date
4) 1013.3	Illumination - Exit signs shall be internally or externally illuminated. Exception: Tactile signs required by Section 1013.4 need not be provided with illumination.	11/18/25

### Compliance

**Inspector Remark:** Exit sign missing, basement hallway.

5) 1032.10.2	Power test - Battery-powered emergency lighting equipment shall be tested annually by operating the equipment on battery power for not less than 90 minutes.	11/18/25
--------------	--	----------

### Compliance

**Inspector Remark:** West main exit, west basement exit

6) 1032.2	Reliability - Required exit accesses, exits and exit discharges shall be continuously maintained free from obstructions or impediments to full instant use in the case of fire or other emergency where the building area served by the means of egress is occupied. An exit or exit passageway shall not be used for any purpose that interferes with a means of egress.	11/18/25
-----------	---	----------

### Compliance

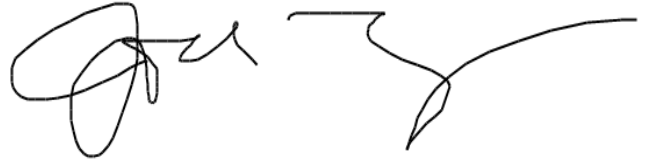
## Inspection History

Inspection Date	Status	Inspected By
11/4/2025	Violations Found	Inspector Marr

### Inspection Remarks

Occupant states they're operating a micro-school. Classrooms are below level of discharge with no fire protection or notification systems.

### Customer



Inspector Marr

## Attachments

11/4/2025

Violation # 1

Open electrical terminations - Open junction boxes and open-wiring splices shall be prohibited. Approved covers shall be provided for all switch and electrical outlet boxes.



11/4/2025

Violation # 1

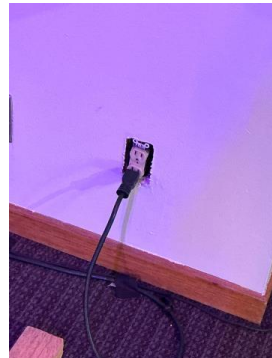
Open electrical terminations - Open junction boxes and open-wiring splices shall be prohibited. Approved covers shall be provided for all switch and electrical outlet boxes.



11/4/2025

Violation # 1

Open electrical terminations - Open junction boxes and open-wiring splices shall be prohibited. Approved covers shall be provided for all switch and electrical outlet boxes.



11/4/2025

Violation # 2

Application and use - Relocatable power taps and current taps shall be directly connected to a permanently installed receptacle. Exceptions: 1. Where approved for use in a Group A occupancy or in



11/4/2025

Violation # 2

Application and use - Relocatable power taps and current taps shall be directly connected to a permanently installed receptacle. Exceptions: 1.Where approved for use in a Group A occupancy or in



11/4/2025

Violation # 2

Application and use - Relocatable power taps and current taps shall be directly connected to a permanently installed receptacle. Exceptions: 1.Where approved for use in a Group A occupancy or in



11/4/2025

Violation # 2

Application and use - Relocatable power taps and current taps shall be directly connected to a permanently installed receptacle. Exceptions: 1.Where approved for use in a Group A occupancy or in



11/4/2025

Violation # 2

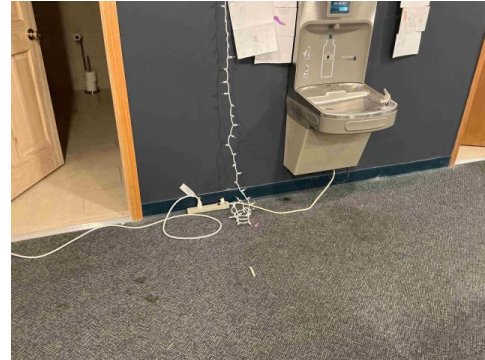
Application and use - Relocatable power taps and current taps shall be directly connected to a permanently installed receptacle. Exceptions: 1. Where approved for use in a Group A occupancy or in



11/4/2025

Violation # 2

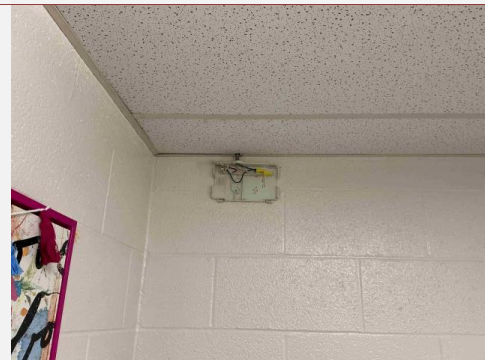
Application and use - Relocatable power taps and current taps shall be directly connected to a permanently installed receptacle. Exceptions: 1. Where approved for use in a Group A occupancy or in



11/4/2025

Violation # 4

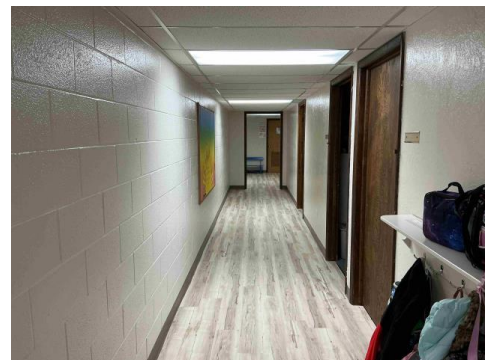
Illumination - Exit signs shall be internally or externally illuminated. Exception: Tactile signs required by Section 1013.4 need not be provided with illumination.



11/4/2025

Violation # 4

Illumination - Exit signs shall be internally or externally illuminated. Exception: Tactile signs required by Section 1013.4 need not be provided with illumination.





11/4/2025

Violation # 4

Illumination - Exit signs shall be internally or externally illuminated. Exception: Tactile signs required by Section 1013.4 need not be provided with illumination.



11/4/2025

Violation # 5

Power test - Battery-powered emergency lighting equipment shall be tested annually by operating the equipment on battery power for not less than 90 minutes.



11/4/2025

Violation # 5

Power test - Battery-powered emergency lighting equipment shall be tested annually by operating the equipment on battery power for not less than 90 minutes.



11/4/2025

Violation # 5

Power test - Battery-powered emergency lighting equipment shall be tested annually by operating the equipment on battery power for not less than 90 minutes.



11/4/2025

Violation # 5

Power test - Battery-powered emergency lighting equipment shall be tested annually by operating the equipment on battery power for not less than 90 minutes.



11/4/2025

Violation # 5

Power test - Battery-powered emergency lighting equipment shall be tested annually by operating the equipment on battery power for not less than 90 minutes.



11/4/2025

Violation # 6

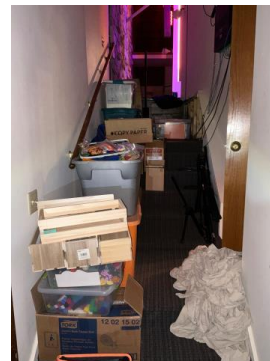
Reliability - Required exit accesses, exits and exit discharges shall be continuously maintained free from obstructions or impediments to full instant use in the case of fire or other emergency where



11/4/2025

Violation # 6

Reliability - Required exit accesses, exits and exit discharges shall be continuously maintained free from obstructions or impediments to full instant use in the case of fire or other emergency where

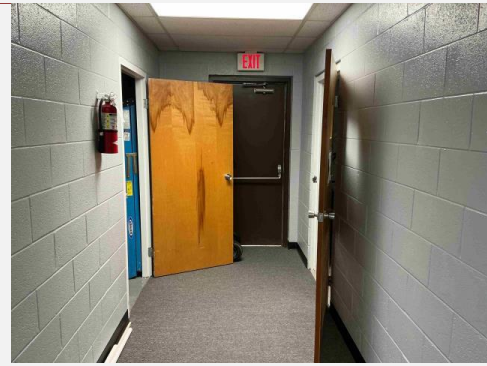




11/4/2025

Violation # 6

Reliability - Required exit accesses, exits and exit discharges shall be continuously maintained free from obstructions or impediments to full instant use in the case of fire or other emergency where



11/4/2025

Violation # 6

Reliability - Required exit accesses, exits and exit discharges shall be continuously maintained free from obstructions or impediments to full instant use in the case of fire or other emergency where



11/4/2025

Violation # 6

Reliability - Required exit accesses, exits and exit discharges shall be continuously maintained free from obstructions or impediments to full instant use in the case of fire or other emergency where



11/4/2025

Violation # 6

Reliability - Required exit accesses, exits and exit discharges shall be continuously maintained free from obstructions or impediments to full instant use in the case of fire or other emergency where

