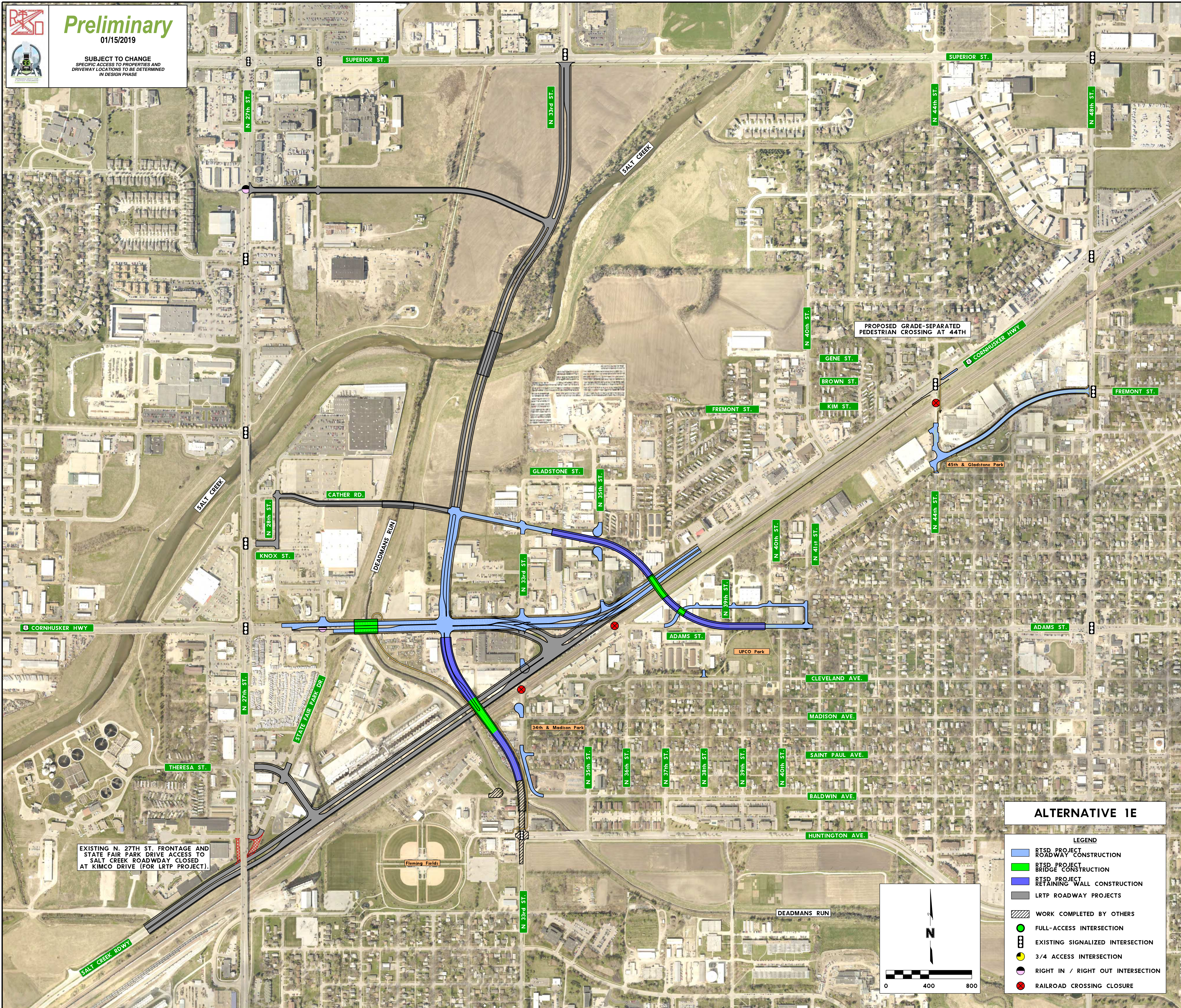




Preliminary

01/15/2019

SUBJECT TO CHANGE
SPECIFIC ACCESS TO PROPERTIES AND
DRIVEWAY LOCATIONS TO BE DETERMINED
IN DESIGN PHASE



PROPOSED GRADE-SEPARATED
PEDESTRIAN CROSSING AT 44TH

EXISTING N. 27TH ST. FRONTAGE AND
STATE FAIR PARK DRIVE ACCESS TO
SALT CREEK ROADWAY CLOSED
AT KIMCO DRIVE (FOR LRTP PROJECT).

ALTERNATIVE 1E

- LEGEND**
- RTSD PROJECT ROADWAY CONSTRUCTION
 - RTSD PROJECT BRIDGE CONSTRUCTION
 - RTSD PROJECT RETAINING WALL CONSTRUCTION
 - LRTP ROADWAY PROJECTS
 - WORK COMPLETED BY OTHERS
 - FULL-ACCESS INTERSECTION
 - EXISTING SIGNALIZED INTERSECTION
 - 3/4 ACCESS INTERSECTION
 - RIGHT IN / RIGHT OUT INTERSECTION
 - RAILROAD CROSSING CLOSURE

