






103°35'W 103°33.5'W 103°32'W 103°30.5'W 103°29'W 103°27.5'W 103°26'W 103°24.5'W 103°23'W 103°21.5'W 103°20'W 103°18.5'W

42°42.5'N 42°41.5'N 42°40.5'N 42°39.5'N 42°38.5'N 42°37.5'N 42°36.5'N 42°35.5'N 42°34.5'N 42°33.5'N 42°32.5'N 42°31.49'N 42°30.5'N 42°29.5'N 42°28.5'N 42°27.5'N 42°26.5'N

# Public Information

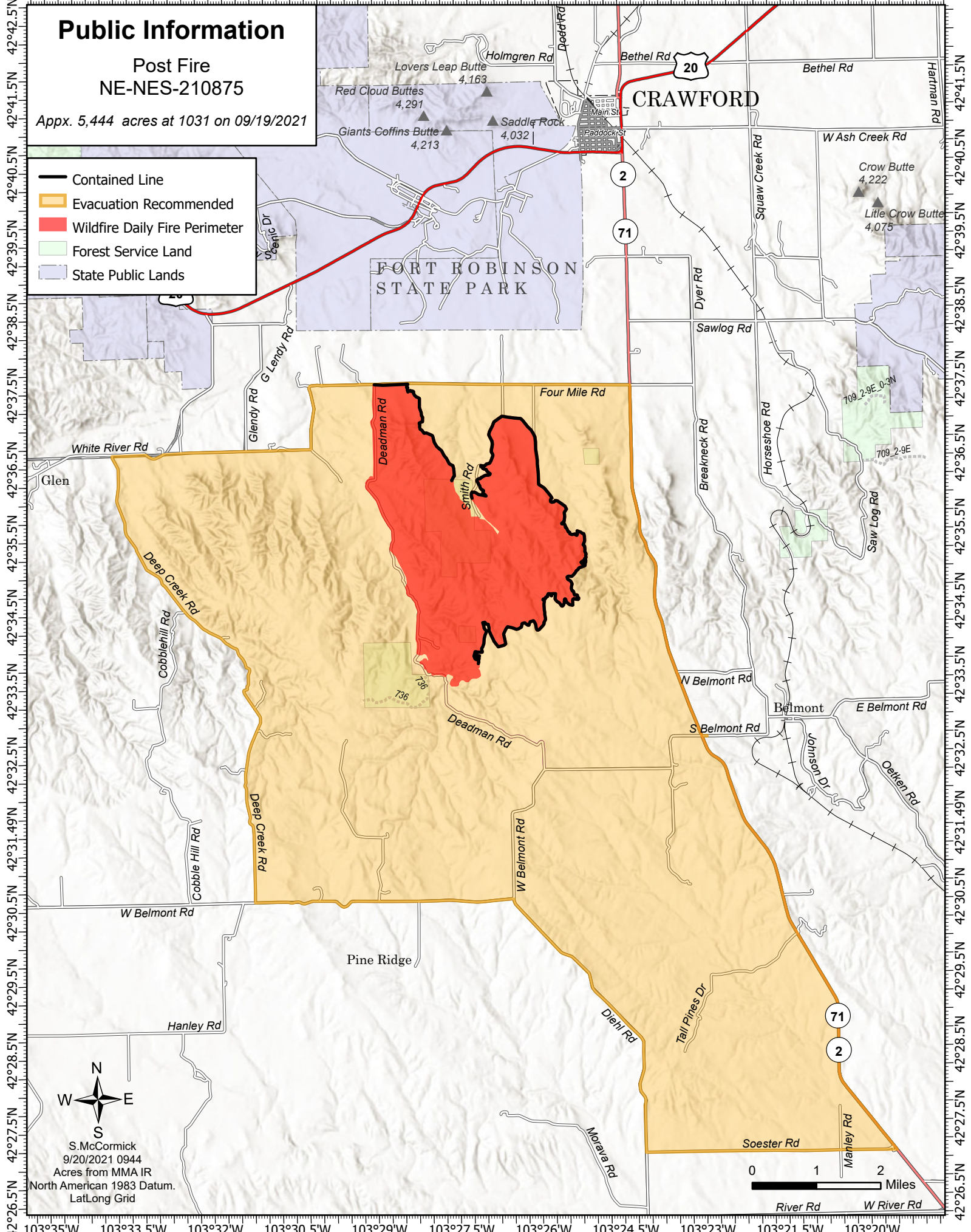
## Post Fire NE-NES-210875

Appx. 5,444 acres at 1031 on 09/19/2021

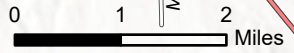
-  Contained Line
-  Evacuation Recommended
-  Wildfire Daily Fire Perimeter
-  Forest Service Land
-  State Public Lands

### FORT ROBINSON STATE PARK

## CRAWFORD



S. McCormick  
9/20/2021 0944  
Acres from MMA IR  
North American 1983 Datum.  
LatLong Grid



103°35'W 103°33.5'W 103°32'W 103°30.5'W 103°29'W 103°27.5'W 103°26'W 103°24.5'W 103°23'W 103°21.5'W 103°20'W