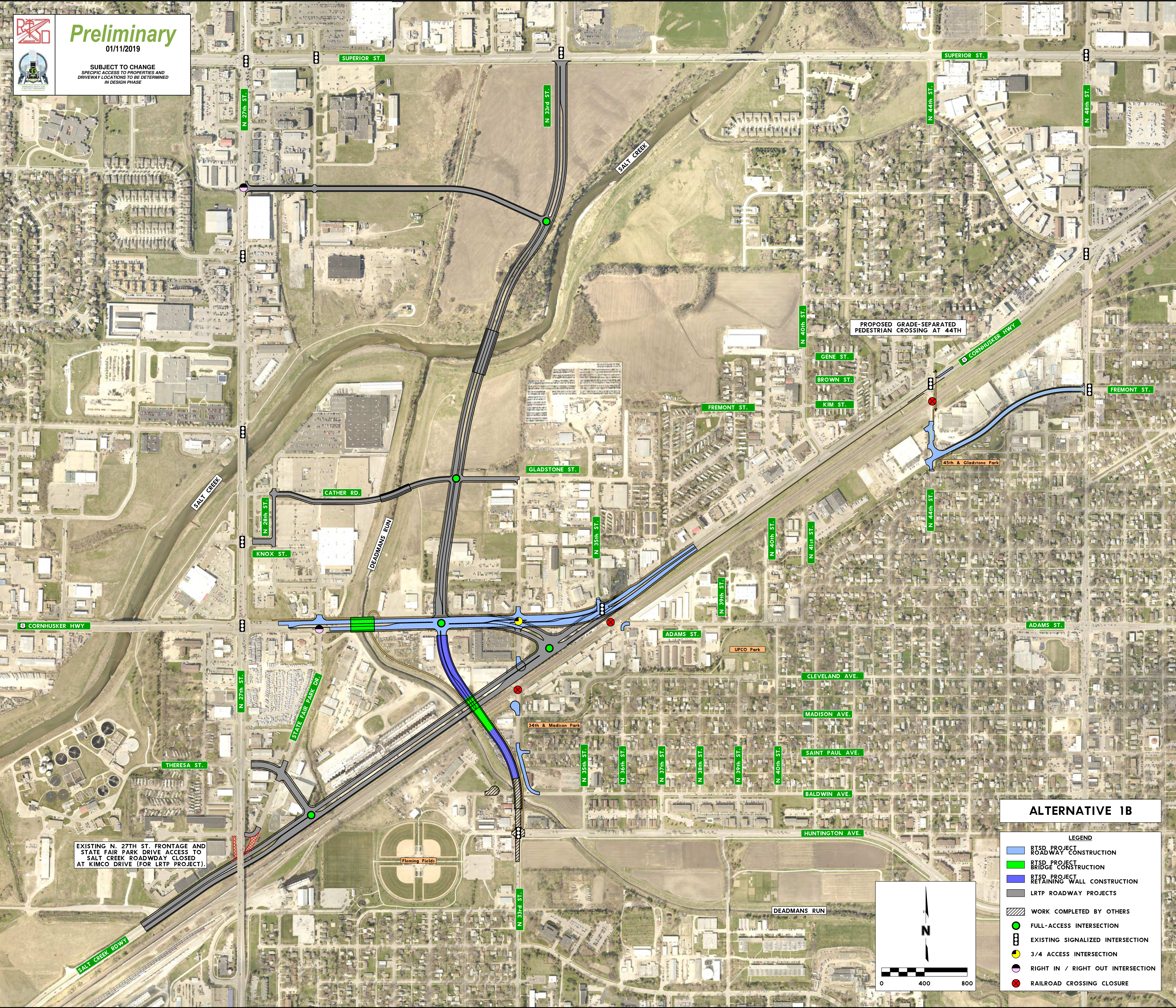




Preliminary

01/11/2019

SUBJECT TO CHANGE
SPECIFIC ACCESS TO PROPERTIES AND
DRIVEWAY LOCATIONS TO BE DETERMINED
IN DESIGN PHASE



EXISTING N. 27TH ST. FRONTAGE AND
STATE FAIR PARK DRIVE ACCESS TO
SALT CREEK ROADWAY CLOSED
AT KIMCO DRIVE (FOR LRTP PROJECT).

PROPOSED GRADE-SEPARATED
PEDESTRIAN CROSSING AT 44TH

ALTERNATIVE 1B

- LEGEND**
- RTSD PROJECT ROADWAY CONSTRUCTION
 - RTSD PROJECT BRIDGE CONSTRUCTION
 - RTSD PROJECT RETAINING WALL CONSTRUCTION
 - LRTP ROADWAY PROJECTS
 - WORK COMPLETED BY OTHERS
 - FULL-ACCESS INTERSECTION
 - EXISTING SIGNALIZED INTERSECTION
 - 3/4 ACCESS INTERSECTION
 - RIGHT IN / RIGHT OUT INTERSECTION
 - RAILROAD CROSSING CLOSURE

