

Psst! I'm free

2020 Visitors & Newcomers Guide

Wharton, Texas
whartonchamber.com



WHARTON
Chamber of Commerce

Welcome to Wharton!

You're very special. We love having you here, and Wharton wants to make you feel welcome.

Whether you're spending a few hours, a few days or a lifetime, Wharton is excited you're here. We are a community-oriented town where no one is a stranger. It's a great place in which to live, work, visit, learn and do business.

We're known far and wide for our famous barbecue, for our native sons like Horton Foote and Dan Rather, for the thousands who have attended our Wharton County Junior College, and for our renowned medical facilities. We've restored our courthouse and charming Monterey Square, our downtown.

You'll be delighted by what you find in our shops, restaurants and attractions. If you've never been here before, let us show you around. Our little guide will help you. We feel sure the people you meet will make you feel right at home.

Ron Sanders

Executive Director

Wharton Chamber of Commerce



Visitors & Newcomers Guide 2020

Contributors

Wharton Chamber of Commerce & Agriculture

Ron Sanders

Kim Peikert

Wharton Journal-Spectator

Bill Wallace • Jessica Hartman • Manny Sosa

Wharton Visitors & Newcomers Guide is an annual publication of the Wharton Chamber of Commerce produced in conjunction with the *Wharton Journal-Spectator*. The guide includes information on what to see and do in

Wharton, Texas, along with a map, calendar of events and a business directory of Wharton Chamber of Commerce members.

For additional information, contact the

Wharton Chamber of Commerce
at 979-532-1862.

Wharton Chamber of Commerce & Agriculture

225 N. Richmond Road

Wharton, TX 77488

Phone: 979-532-1862

Fax: 979-532-0102

Email: admin@whartonchamber.com

www.whartonchamber.com

Wharton Journal-Spectator

115 W. Burleson St.

Wharton, TX 77488

Phone: 979-532-8840

Fax: 979-532-8845

Email: jhartman@journal-spectator.com

www.journal-spectator.com

For information about advertising in next year's edition, contact the

Wharton Journal-Spectator at 979-532-8840.



*Wharton County
Junior College*

Success Begins With **One Step**



- > CHOOSE YOUR **PROGRAM**
- > CHOOSE YOUR **CAMPUS**
- > START YOUR **PATH**

40+ PROGRAM PATHWAYS

Small Class Sizes • Personal Attention
Services to Help You Complete Your Path

Plan. Achieve. Transfer or Work.

wcjc.edu | 1.800.561.WCJC

WHARTON | SUGAR LAND | RICHMOND | BAY CITY

TABLE OF CONTENTS

Antiquing	20
Brahman Country	8-9
City, county, school information.....	28-29
Chamber Events.....	35
Cops & Rodders Car Show	31
Dan Rather	11
Day Trip to Wharton	5
Historic Homes of Wharton.....	16-19
Horton Foote	14
Map of Downtown Wharton.....	24-25
Monterey Square Wine Festival.....	15
Morris Carriage House.....	6
Parks and Recreation.....	26
Party Under the Bridge	23
Pecan Picking	32-33
Snow on the Square.....	22
Texas Salsa Showdown	30
Utility Information.....	36
WCJC: Higher Education in Wharton.....	34
Wharton Chamber of Commerce Business Directory	37
Wharton Civic Center	27
Wharton County Courthouse	10
Wharton Economic Development Corp.	35
Wharton Downtown Legends	7
Wharton's Plaza Theatre	12-13
Wharton's Pick and Flip	21

Our beautiful cover photo is provided by Wharton supporter and business owner, Michael Roberson.



RATH PLUMBING CO.

**PARTS
&
SERVICE**

New Construction
Repairs
Water Heater Sales
Service
Installation

**216 N. Richmond Rd.
Wharton, TX 77488**

(979) 532-0223

Residential • Commercial • Industrial
A Full Service Plumbing Company Since 1968
www.RathPlumbingWharton.com

A. J. Rath, owner LIC.# M-5188

A Day Trip to Wharton, Texas

We can help you have quite a memorable day in Wharton, Texas! Bring your camera along, because the beauty in this city is picture worthy!

- Morning -

Whether you're waking from an overnight stay at one of our hotels or driving into town, breakfast can be found at many of this city's unique restaurants. At Freddie's you will find the comforts of "home-style" cooking in an inviting, diner-style atmosphere with lots of smiling faces and extra-large food portions. Freddie's is located at 2111 North Richmond Road.

Once you've gotten your fill of bacon, eggs and stories from the locals, a retail therapy trip within Wharton's Historic Downtown Monterey Square will be just what the doctor ordered.

Retail merchandise ranges from unique, antique finds at JT's This & That, to high end fashion like that at K&D Design. Just park your car at the courthouse and pick a corner to start.

The charm of the historic buildings and brick sidewalks is better appreciated while strolling.

- Afternoon -

Once 11 o'clock hits, the smell of food hitting the grill at the area's Tex-Mex restaurants will have your tummy rumbling. Los Cucos, Larry's Mexican Restaurant, Taqueria Las Regias and Cuevas Mexican Restaurant are each within walking distance from the courthouse and offer menus containing some of the best Tex-Mex dishes, cold cervezas and margaritas. If you're in the mood for something other than Tex-Mex, Provisions Bistro and Market on Milam Street offers sandwiches, salads and more with their organic

and locally sourced ingredients.

Grab a sweet tea to-go because your next stop will be at one of Wharton's city parks. Located at Colorado Street and North Richmond Road, Dinosaur Park offers a quiet, shaded setting with a life-size dinosaur! Perfect for taking selfies and maybe an outdoor snooze.

- Evening -

The Plaza Theatre, located at 120 South Houston Street, may have a production that evening. A live play within the recently restored theater is a great way to end the evening. The glowing neon of the exterior Plaza lights are absolutely breathtaking. To check the schedule and purchase tickets, visit www.whartonplazatheatre.org.

The Plaza Theatre isn't your only evening venue that will have the glow of neon. At the corner of Fulton Street and Boling Highway, 9ers Grill offers game viewing, loaded spuds, steaks, burgers and more! Next door to 9ers is Yara Bakery & Café. You can grab a cup of joe and a sweet treat to end the night.



Pekar's
BODY SHOP, INC.

www.pekarsautobody.com

2720 N. Richmond Rd.

Wharton, TX 77488

(979) 532-5805



One of the largest and varied collection of carriages is gathered in the Morris Carriage House just east of Wharton on CR 117.

The love for the gentle and quiet means of transportation before the invention of the automobile is ingrained in carriage collectors Stewart Morris Sr. and his son Stewart Morris Jr.

Their interests go beyond collecting, each piece in their collection is cared for and completely restored.

As the collection grew, they had to have a place to store them, so the Morris Carriage House was built to house their massive personal collection.

Carriages in the facility span several hundred years of history and include carriages from around the world as well as from the U.S. Each carriage and wagon is collected and shown for its historical significance and the craftsmanship of those who built them.

But what is in the carriage house is only a small portion of those collected by the father and son over the years.

In their restored, pristine condition they look like and could go from the showroom to roadway at any time, which some of them sometimes do.

But it takes horses for this means of transportation, so there are trained carriage horses stabled at the facility.

The carriage horses are cared for at the site and all the tack needed is there also. Carriage horses are worked with and groomed daily and all tack is hung with fittings polished and leather oiled ready for use.

When being taken out for special occasions, the drivers and passengers often don period costumes which go along with the years the vehicles were in use.

Interesting pieces in the collection include the carriage used by Vivien Leigh in the movie *Gone With the Wind*.



Vivien Leigh.

The 1939 film adapted from Margaret Mitchell's 1936 novel of the same name won 10 Academy Awards. It has been named the fourth in the top 100 American films of the 20th Century. The cast also included Clark Gable, Leslie Howard and Olivia De Havilland.

Another of the historical pieces in the collection is the carriage known as "The Traveling Government of Mexico." It was used by then popular Mexican President Benito Juarez.

Juarez is still considered Mexico's greatest and most beloved leader of Mexico. He helped bring in a number of liberal reforms in the nation's constitution of 1857.

During the French occupation of Mexico he refused to accept the rule of any foreign government. For six years the government of Mexico became mobile in the carriage, changing sites as Juarez stayed ahead of the invading French army.

To arrange tours, call Kim at (979) 532-1862.

Wharton Downtown Legends



Bonnie and Clyde

In 1932, a sheriff's deputy stationed at the Colorado River bridge encountered the notorious bank robbers Bonnie and Clyde, who had been spotted in Louise, south of

Wharton, and were headed toward Wharton. He fired several shots at their vehicle, but apparently missed.



Dickson Monument

Sheriff Hamilton Dickson was shot and killed in the line of duty while trying to capture an escapee from the county jail. His funeral was

the largest ever held at the time in Wharton County. The statue on the courthouse lawn was erected by his family. His descendants recently had it restored.



Sniper's Nest

In 1898 Hope Adams ran for sheriff of Wharton County. He ran on the independent ticket against the candidate running on the White Man's Union party. In those

days a candidate needed the approval of the White Man's Union in order to seek public office. After filing for office, Adams crossed from the courthouse at the Milam and Fulton street intersection. A shot rang out. Adams fell dead. Someone had fired the fatal shot from the original courthouse clock tower. It is said that everyone knew who did it, but charges were never filed.



Lucky Shot

In 1917 City Marshal W.W. Pitman was given an arrest warrant for F. Lopez. As

the sheriff approached a Mexican restaurant at the corner of Burleson and Fulton streets in downtown Wharton, Lopez emerged from the restaurant. Both drew their pistols and fired at the same time. The bullet from Pitman's gun entered the cylinder of Lopez's gun. Lopez's gun jammed and saved both Lopez's and Pitman's lives. Pitman sent Lopez's gun to Ripley's Believe It or Not. He won fourth place in Ripley's annual contest. The gun remains in Ripley's possession and was last seen in their facility in downtown San Antonio.



Ghost Story

Wharton County wanted to honor its Confederate Army veterans, members of Buchel Camp. In their memory a monument was placed on the northwest corner

of the county courthouse lawn. To this day, a circular patch can be seen around the monument. It appeared shortly after the dedication and remains there. Legend has it that ghosts of the Confederate soldiers march around the statue every night guarding it and creating a path that defies all explanation.



Pecans vs. Sycamores

One of Wharton County's greatest controversies was what trees should be planted around the

county courthouse. Sycamores were native timber and thus were originally chosen for four sides of the county courthouse. However, in 1922, the county agricultural extension agent planted pecan trees between the sycamores to prove that pecans could be a viable cash crop for Wharton County. But the courthouse square was not big enough for both of them. As the pecan trees grew, it became clear that there was not room enough both for the pecans and the sycamores. The problem was resolved one night, after midnight, when an unknown woodsman came to the courthouse square and cut down all the sycamores. The pecan trees continue to flourish there to this day.

Brahman Country **History of Brahman Cattle in Wharton County.**



Cattle raising replaced the plantation system as Wharton County's major industry after the Civil War and drew significant numbers of Mexicans into the area to serve as herdsman. Herds were formed as residents bought cattle and rounded up strays that had multiplied on the prairies when access to markets was limited. Abel Head (Shanghai) Pierce acquired vast acreage on the west side of the Colorado, with a cattle empire that stretched over three counties, encompassing a half-million acres, of which 30,000 were in Wharton County. He saw the potential impact that the Brahman cattle breed could have on the cattle industry in the south, but his death in December 1900 left his nephew, A. P. Borden, to facilitate the first major importation of Brahmans to the United States, specifically Wharton County, in 1906. J. D. Hudgins had purchased some Brahman cattle prior to 1900 and later purchased some from the Pierce Ranch herd and imported Brazilian bulls via Mexico. The J. D. Hudgins Ranch in Hungerford eventually established the largest American Grey Brahman herd in the world. Wharton County became the second largest cattle producing area in the state.

J. D. HUDGINS, INC.

The J. D. Hudgins Ranch was established in 1882 by Rachel Ann Northington McKenzie Hudgins and her four sons in Wharton County with main operations in Hungerford, six miles northeast of Wharton, Texas.

After the death of Joel Hudgins in 1873, Rachel asked their son Josiah Dawson (J. D.) to take over the family interests. The family began purchasing land in Wharton County; acquiring over 10,000 acres, in addition to their other holdings.

In 1897 the four brothers divided the property between themselves and operated independently.

In 1908 J. D. and his wife Mollie (McKin-

ney), formed a partnership with their four children, to be known as the J. D. Hudgins Ranch. J. D. took over ranch management and was in charge until his death in 1928, when his son, Walter J. Hudgins, directed ranch operations until his death in 1943. His son, Edgar H. Hudgins, supervised it until 1962.

The ranch is still operating under the Hudgins, Leslie W. Hudgins, Mangum, Locke, Forgason, Koonce and Goudeau divisions.

Originally the ranch maintained herds of slick-haired Louisiana cattle with a small amount of Brahman blood in them.

In 1915 Hudgins purchased the ranch's first purebred Brahman cows from A. P. Borden; these animals were descendants of the herd brought from India by Borden in 1906. In 1924, they were able to purchase a group of bulls which had been imported from Brazil. These, and other breeders' humped cattle, formed the basis of the first breed to be developed in the United States – the American Brahman. The registry for the American Brahman breed was organized in that same year.

In 1933 the Hudgins Ranch purchased the gray Brahman bull Manso, a descendant of a pureblood Brazilian Brahma bred by the Sartwelle Brothers of Palacios, Texas. Manso sired 316 offspring in ten years, and today an estimated 75 percent of all the Brahman cattle registered by the American Brahman Breeders Association can trace their lineage directly back to this gentle, very beefy bull. Before Manso, Brahman cattle generally were wild, thin, and leggy. The half-circle "L" brand on the right hip of each animal is the registered J. D. Hudgins Ranch firebrand. Formerly the brand was used by J. D. Hudgins's nephew; it was chosen and bought by Hudgins because it was almost impossible for rustlers to alter. In addition to the ranch brand, each division has its own firebrand on the right forearm of each animal.

The office of J.D. Hudgins Inc. is 214 E Railroad St. Hungerford, Texas.



Manso
picture courtesy of J.D. Hudgins, Inc.

V8 RANCH.

In 1994 V8 Ranch was founded by Howard Parker of Center, Texas. The original cattle were acquired from Dr. William States Jacobs, a pioneer Brahman breeder who established his herd with cattle imported directly from India in 1924 and 1925.

Parker was a Ford automobile dealer and named his cattle ranch V8, after the engine. Over time, his herd became well-known throughout the country for its outstanding cow families with gentle dispositions.

The foundation herd came first from Jacobs' bloodlines, then later with the addition of some Manso breeding, and even later with Imperator influence. The Optimus bull—descended from the great Hattie Cleo—was deeply influential in the early V8 herd. More than 70 years later, the guiding force behind V8 breeding is still its legendary cow families.

In 1971, Parker announced plans to sell the V8 herd, brand, and ranch in Center, Texas. One week before Christmas that year, Sloan Williams heard the news.

Parker wanted the sale to close before the New Year (1972). Sloan was on his first (and only) Williams family ski trip when he negotiated the million-dollar deal via a pay phone in Red River, New Mexico.

Sloan recruited investors to purchase the real estate from the ranch, but acquired the registered cattle herd and V8 brand himself. Sloan relocated the herd to Wharton County, where it remains today.

Sloan and Mollie Williams both come from deeply rooted Texas ranching families. Sloan's family has been in the cattle business in Millican, Texas for over 100 years.

Mollie's great-great-grandmother was Rachel Ann Hudgins. Mollie grew up on J.D. Hudgins Ranch.

In 1976, Jim Williams, Sloan and Mollie's son, graduated from Texas A&M University with a degree in animal science, and he and his wife Luann returned to the ranch. Jim began work as

manager of the purebred Brahman herd, and Luann took over ranch office duties.

The V8 Ranch hosted their first ranch production sale in 1981: "The Golden Gate Sale", which broke 6 Brahman sale world records and still holds the record for the highest-averaging Brahman sale of all-time, with an average of \$14,357 per head.

The Machine, +Mr. V8 380/6, emerged in the 2010s. He was recognized by The Brahman Journal as the #1 Sire of Champions from 2011 to 2018, making him the most winning Brahman sire of champions in USA in modern history.

He produced the 2014, 2015, 2016, and 2018 U.S. National Champion Females. In September 2018, his semen sold for over \$18,000 per unit at auction — the highest-valued U.S. semen at the time.

Currently "The Machine", +Mr. V8 380/6, is ranked as the #3 bull of the Brahman breed for the ABBA Register of Renown and climbing. He passed away in 2019 and remains relevant and in high demand to this day, most recently siring the 2019 International Grand Champion Female.



"The Machine", +Mr. V8 380/6
picture courtesy of V8 Ranch.

When Sloan purchased the herd, all the cattle carried the V8 brand on their left hip and this tradition still holds true today.

Jim was older when the herd was purchased and his cattle are branded the same as Sloan's, using the same V8 brand.

Sloan and Mollie gave each child and grandchild the best heifer calf of that year's calf crop and decided on shoulder brands for each of their granddaughters and great-grandchildren.

The shoulder brands can now be seen on a number of the ranch's cattle: C, established 1983, signifies cattle owned by Catherine Sloan Williams; P, established 1997, signifies cattle owned by Payton Sloan Powell; K, established 2017, signifies cattle owned by Knox Harrison Neumayr.

The office of V8 Ranch is 6329 FM 1096 Boling, Texas.

Wharton County Courthouse

The Wharton County Courthouse does not resemble what people remember from the 1950s. In the 1930s and 1940s, the courthouse was remodeled to gain needed space. Wings were added on each side. The bell, clock tower and mansard roof had been removed. Its original red bricks covered in stucco and painted yellow. It was re-designed in an art deco look of the time period.

Famous playwright Horton Foote, who was a Wharton native, was upset with the changes and he referred to it as “the Sulphur Block” because it was painted yellow.

By the 1980s the added wings were pulling on the center structure and causing major engineering concerns. The question was, “Do we raze it or save it through restoration?”

For a while it looked like the 1889 Wharton County Courthouse would be no more. Structural issues became the focal points of the emotional issue. Restoration of the courthouse caused divisions among residents of the county.

Preservationists said save it at all cost; others were for replacing with a more modern structure. A third group thought it could not be restored. Local preservationists quickly organized and looked for ways to save the building. They considered the courthouse to be “the heart and soul of Wharton County.”

The preservationists won, and courthouse history was researched by Wharton native and architect David Bucek Jr.

After four years of planning, trips to Austin’s Texas Historical Commission and fundraising, the task of restoring the historic courthouse began — and it would be restored to its Victorian style.

The courthouse was designed by Eugene T. Heiner, who arrived in Houston from Dallas in

1878. Between 1878 and his death in 1901, he designed 12 courthouses - only six survive.

The courthouse was built in a classic Victorian design. Its design was a combination of two popular Victorian styles of the 1880s — the Second Empire style and the Italianate style. It was a three-story masonry building with limestone trimmings topped with a mansard roof and a central clock tower. Its bricks were made from clay gleaned from the Colorado River.

By the 1950s, the Heiner-designed courthouse looked nothing like it originally did.

But cost and time to restore the structure were underestimated. The courthouse had an original estimate of \$2.9 million but ended up costing \$7.4 million. The

restoration began in July 2003 and was completed in July 2007. It was the most extensively restored courthouse in the state’s history.

Finally, in August 2005, Wharton residents gathered on the courthouse square to watch as the massive clock tower was lifted to the top of the building. The tower is an exact replica of the original. The courthouse bell, which had been saved by First Baptist Church, was returned to the county and placed in the tower.

Today, with the restoration complete, the courthouse as it looked in its 1889 glory is the gem of Wharton’s downtown Monterey Square. It joins Hallettsville as the only two Heiner works that are as the architect originally designed them.

The courthouse is featured in the PBS television documentary, *The Golden Age of Texas Courthouses*.

The Wharton County Courthouse is at 100 S. Fulton St. in downtown Wharton. Visit whartoncountycourthouse.com.



Dan Rather

Dan Rather, the former news anchor for the CBS Evening News in the 1980s, is another native son of Wharton. Today, you can watch him on his show, *The Big Interview* with Dan Rather on the cable channel AXS TV. He has thought-provoking, in-depth interviews with some of the most talented artists from across the entertainment industry.

Daniel Irvin “Dan” Rather Jr. was born here on Oct. 31, 1931 to Daniel Irvin Rather Sr. and his wife, the former Byrl Veda Page. His father worked here in “the oil patch” when he was born. Dan spent the first six months of his life here and refers to Wharton as his hometown. The home where Rather spent the first days of his life has been saved and restored. It sits on the grounds of the Wharton County Historical Museum, 3615 N. Richmond Road, and is available for tours.

Rather began his career in 1950 as an Associated Press reporter in Huntsville. In 1959, he entered television as a reporter for KTRK-TV in Houston and was later promoted to director for KHOU-TV.

In September 1961, Rather reported live from the Galveston Seawall as Hurricane Carla threatened the Texas coastline. He was hired as a CBS News correspon-



Dan Rather visited with Whartonians at the Wharton County Historical Museum.

dent in 1962. He was the White House correspondent during the Richard Nixon presidency.

There is also an exhibit set at the museum which recounts events in his life.

In January, 2018 he began hosting an online newscast called *The News with Dan Rather* on *The Young Turks* YouTube channel. Rather is active on social media and reacts to events through his Twitter, Instagram and Facebook accounts.

For more about Dan Rather, visit danrather.com.

- ✓ **NO WAIT**
- ✓ **EMERGENCY ROOM**
- ✓ **IMAGING**
- ✓ **ENDOSCOPY**
- ✓ **DAY SURGERY**
- ✓ **INPATIENTS**



www.oakbendmedcenter.org





The Plaza Theatre

History of the Plaza:

The Plaza began life in 1904 as the Plaza Hotel, a two-story brick structure on Monterey Square across from the Wharton County Courthouse. Owned and operated by R.B. Huston and his wife Lula Merriwether Huston, the hotel had a large dining room on the first floor and 20 rooms to let upstairs. It was the site of many community activities, conventions, and civic and club banquets. A third floor added in 1929 expanded the number of rooms and included a small opera house that housed Wharton's first radio station, which first went on the air in July, 1933. Wharton was one of many cities that participated in the World Bridge Olympics in 1934, and the local tournament was conducted at the Plaza.

The lot on which the hotel stood was sold in 1941 to Long-Griffith Theaters. The hotel was gutted and extended to create a Streamline Moderne Art Deco movie theater that opened in March, 1942. One of three movie theaters in Wharton, the Plaza Theatre operated until the 1980s, when it was closed and abandoned. In 1995, the Community Theatre of Wharton, now known as the Plaza Theatre, restored and reopened it as a regional performing arts center.

The Plaza Theatre on Monterey Square in downtown Wharton will begin the 2020 season with "Driving Miss Daisy".

The beginning of the 2020 season is Friday, Feb. 7. Performances are normally at 7:30 p.m. Fridays and Saturdays and 2:30 p.m. Sundays.

Here's information on the productions:

Driving Miss Daisy

a drama

by Alfred Uhry

presented through special arrangement
with Dramatists Play Service, Inc., New York
directed by Russell Kacer

Performances: February 7-16, 2020

General Admission: \$15

Recommended for general audiences

The place is the Deep South, the time 1948, just prior to the civil rights movement. Having recently demolished another car, Daisy Werthan, a rich, sharp-tongued Jewish widow of seventy-two, is informed by her son, Boolie, that henceforth she must rely on the services of a chauffeur. The person he hires for the job is a thoughtful, unemployed black man, Hoke, whom Miss Daisy immediately regards with disdain and who, in turn, is not impressed with his employer's patronizing tone and, he believes, her latent prejudice. But, in a series of absorbing scenes spanning twenty-five years, the two, despite their mutual differences, grow ever closer to, and more dependent on, each other; until, eventually, they become almost a couple.

Red, White and Tuna

a comedy

by Ed Howard, Joe Sears, and Jaston Williams
presented through special arrangement
with Samuel French, Inc.
directed by Burke Wilkins

Performances: April 17-26, 2020

General Admission: \$15

Recommended for mature audiences due
to mild language and adult themes

The much anticipated third installment in the Tuna trilogy takes the audience through another satirical ride into the hearts and minds of the polyester-clad citizens of Texas' third smallest town.

Along with Tuna's perennial favorites, some new Tuna denizens burst into the 4th of July Tuna High School Class Reunion. This sets the stage for a show full of fireworks and fun from the land where the Lion's Club is too liberal and Patsy Cline never dies.

It's been several years since we left Bertha and Arles dancing at the end of A Tuna Christmas...Did the romance blossom? Has Didi Snavley received any "cosmic" communications from R.R.'s UFO? Did Stanley make his fortune in the Albuquerque taxidermy business? These and other burning questions will be asked and answered in the side-splitting spoof of life in rural America.

**Litefooter Summer Youth Workshop
& Production**
Disney's Frozen JR.

music & lyrics by Kristen Anderson-Lopez
& Robert Lopez

book by Jennifer Lee

Based on the Disney film

written by Jennifer Lee

and directed by Chris Buck

and Jennifer Lee

presented through special arrangement
with Music Theatre International (MTI)
directed by Hailey Roberson

Auditions & Registration:

May 17 & 19, 2020

Program details to be announced.

Performances: June 25-28, 2020

Thursday & Friday at 7:30pm,

Saturday & Sunday at 2:30pm

General Admission: \$15

Recommended for general audiences

Frozen JR. is based on the 2018 Broadway musical, and brings Elsa, Anna, and the magical land of Arendelle to life, onstage. The show features all of the memorable songs from the animated film, with music and lyrics by Kristen Anderson-Lopez and Robert Lopez, plus five new songs written for the Broadway production.

A story of true love and acceptance between sisters, Frozen JR. expands upon the emotional relationship and journey between Princesses Anna and Elsa. When faced with danger, the two discover their hidden potential and the powerful bond of sisterhood. With a cast of beloved characters and loaded with magic, adventure, and plenty of humor, Frozen JR. is sure to thaw even the coldest heart!

The Addams Family

a new musical comedy

book by Marshall Brickman & Rick Elice

music & lyrics by Andrew Lippa

based on characters created

by Charles Addams
presented through special arrangement
with Theatrical Rights Worldwide
directed by Rachel Helmick

Auditions: May 24 & 26, 2020

Performances: July 31 – August 16, 2020

Fridays and Saturdays at 7:30pm,

Sundays at 2:30pm

General Admission: \$20

Recommended for general audiences

The Addams Family features an original story, and it's every father's nightmare. Wednesday Addams, the ultimate princess of darkness, has grown up and fallen in love with a sweet, smart young man from a respectable family – a man her parents have never met. And if that weren't upsetting enough, Wednesday confides in her father and begs him not to tell her mother. Now, Gomez Addams must do something he's never done before – keep a secret from his beloved wife, Morticia. Everything will change for the whole family on the fateful night they host a dinner for Wednesday's 'normal' boyfriend and his parents.

*For more, information, call 979-282-2226 or
visit whartonplazatheatre.org*



Horton Foote

An Academy Award winner and Pulitzer Prize recipient, Horton Foote immortalized Wharton and loved the community until the day he died on March 7, 2009 at age 92. He is buried in Wharton City Cemetery.

Foote is the dramatist who won Oscars for “To Kill a Mockingbird” and “Tender Mercies” and a Pulitzer Prize for his stage play “The Young Man From Atlanta.”

Known to work best during the night, he wrote his plays with a pencil on notebook paper to be transcribed later. The playwright left a legacy and body of works which may never be duplicated.

Foote was raised in a middle class, hard-working family. He was born here on March 14, 1916, the son of Wharton haberdasher Albert Horton Foote and the former Hallie Brooks.

His writing captures a unique era in the life of a small Texas town. His subject matter is those in that era trying to cope with everyday life and the twists and turns life brings.

Writers, it is said, are supposed to write about what they know. Foote drew upon everyday occurrences he heard as a child listening to his parents and grandparents talk.

When asked about his writing style, Foote is quoted to have said, “But I don’t really write to honor the past. I write to investigate, to try to figure out what happened and why it happened, knowing I’ll never really know. I think all the writers that I admire have this same desire, the desire to bring order out of chaos.”

Foote left Wharton by train and headed for Dallas at age 16 to pursue an acting career, but he carried with him the memories of his home. Wharton, with its pecan trees, its Victorian homes and the character of its residents, would become part of his plays and films.

He spent two years studying acting at Pasadena Playhouse in California. Then he headed to New York City “to make a name for himself as a Broadway star.” He continued his studies there with Tamara Daykaranova and joined Mary Hunter’s American Actors Company.

One of his assignments was to perform a

one-act improvisational play based on the actor’s hometown. After performing his, Agnes DeMille, a choreographer, asked if he had ever written anything.

His response was “no, what on earth would I write about?”

DeMille, who would become a lifelong friend, then gave him his best advice: “Write what you know about.”

The budding playwright went home and wrote a one-act play called “Wharton Dance” that night. It was about the Friday-night dances in his hometown. He wrote himself into the lead. The company performed the play in an evening of one-acts. Foote appeared in other plays he wrote and pursued his acting career.

During a visit home, he wrote another play. This time it was a three-act play, a drama set in a small-town drugstore. It was called “Texas Town.” The American Actors Company staged it in 1941. Foote again played the lead.

Brooks Atkinson, a critic for the New York Times, came to see it. He called it an “engrossing portrait of small-town life.”

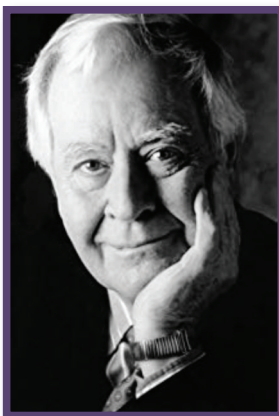
His “The Trip to Bountiful” starred his friend Lillian Gish in live theater. In 1985, the movie was made and Geraldine Page received an Academy Award for best actress and Foote was nominated for the screenplay.

Another film success was “Baby, the Rain Must Fall” (1965), a reworking of Foote’s play “The Traveling Lady.” The film starred Steve McQueen, and much of it was shot in and around Wharton.

Foote wrote more than 60 plays, most of which are set in the fictional Texas town called Harrison. It’s a place where everybody knows everybody else’s name and business — just as they did when Foote was growing up in Wharton. His career spanned six decades.

He wrote “The Young Man From Atlanta” in the 1950s. It won him the Pulitzer Prize in 1995.

His home in Wharton still stands at 505 N. Houston St. It is part of the driving home tour offered in Wharton.





Monterey Square Wine & Arts Fair

One of Wharton's popular events provides culture and is on every corner of downtown Wharton at the Monterey Square Wine and Arts Fair, held each year in October.

The event is a fantastic night to sip, shop and stroll. The 2019 event — the 11th annual — was in downtown Wharton and

was deemed a success by wine and arts fair officials.

Begun in 2008, the event was sponsored by the Wharton Chamber of Commerce & Agriculture and the Monterey Square Merchants Committee and is a wonderful way to highlight stores while offering some unique opportunities to the public.

Each year, different Texas wineries provide the samples, in both whites and reds. Wine is also for sale by the glass or bottle. Participating merchants offer the various vintages to sample.

In addition, there is craft beer sampling and boutique sodas.

Art is another feature of the festival. Local artists display their work in several sites.

No festival is complete without music, and there's a full venue to check out at the fair. Musicians set up shop in front of several businesses, playing acoustic favorites.

Visit montereysquarewinefair.com for more information.



Marketing
Consulting



Web Design &
Social Media



Graphic
Design



VOTED BEST MARKETING
& BEST WEB DESIGN

KAPEESH
MARKETING, LLC

247 W. Milam Street
Downtown Wharton
(713) 570-6603
kapeeshllc.com



@kapeeshteam

Historic Homes of Wharton

EDITOR'S NOTE: The historic homes driving tour is designed to give those staying in Wharton some views of early architecture around the city. The homes have been grouped for ease of finding them on the map. Many of the homes are private residences and not accessible for tours.



E. Clyde and Mary Elliott House, 707 N. Walnut St.

E. Clyde and Mary Elliott acquired three lots in 1919 from W.B. Barbee in the Barbee subdivision. The Elliotts erected a one-story bungalow home for \$2,697. Mr. Elliott was a farmer with land near the small community of Glen Flora. The couple owned the house until 1960. The E. Clyde and Mary Elliott House is a one-and one-half story frame bungalow facing east. The Elliott house is one of the best examples of the bungalow form and the only example of the “airplane” subtype in Wharton.

Nettie Elkins House, 109 E. Alabama St.

The Elkins House was built for Nettie Elkins after receiving the undivided land from the heirs of Mrs. D.A. Hobbs. The house was built in 1874. The Elkins House is significant as the best extant example of the pyramid roof house in its most basic form in Wharton. A full-width open porch supported by three evenly-spaced columns dominates the principal façade.



Bolton-Outlar House, 517 N. Richmond Road

The Bolton-Outlar House, built in 1893, is a two-story frame Pyramidal-roof dwelling Queen Anne influence modified around 1910 with a classical Revival pediment portico and porches. It rests on brick piers and is covered by an asphalt shingle tripped roof with lower cross gable on the principal and side elevations. An exterior brick chimney with a corbeled cap rises from the top ridge of the hipped roof.

It is one of Wharton's most impressive late-19th and early-20th century residential dwellings. It was substantially remodeled around 1910 and again recently by the current owners.

H.J. Bolton acquired this property in 1893 from A.H. Purviance for \$300 and probably built the house soon afterwards. Bolton was a local merchant and first president of the newly organized Wharton National Bank in 1903. In 1919, Dr. L.B. Outlar purchased the dwelling for \$7,500. Dr. Outlar established a clinic in partnership with Dr. William Blair called the Outlar-Blair Clinic. The Outlar family owned the





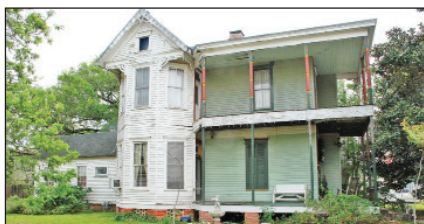
Merrill-Roten House,
520 Avenue A

James F. and Lena Merrill had this brick veneer house built soon after their acquisition of the property in 1930. In 1932, John L. Roten purchased the house. Roten was one of Wharton's most successful businessmen during the mid-20th century. He began his career in 1922 when he opened a dry goods store in the community. The Tudor Revival style was popular among professionals in the community during the late 1920s and 1930s. Its full brick veneer exterior was rarely seen on local dwellings.



John and Sophie Garrett House,
401 E. Alabama St.

The John G. and Sophie Garrett House is a one-and-one-half story frame dwelling facing south on East Alabama Street. Its appearance is typical of the late 19th century dwellings in a modified L-plan form. Jig sawn balusters and brackets, and turned columns and frieze indicate a strong Victorian Queen Anne influence.



Wiley J. Croom House,
205 E Milam St.

This is a two-story frame house designed by Eugene T. Heiner, who also designed the 1888 jail and courthouse in Wharton. It was built in typical Victorian Queen Anne style with heavy use of decorative embellishments. Wiley J. Croom came to Wharton in 1868 to practice law and sell real estate. He was elected county judge in 1886 and met Heiner during the construction of the courthouse which led him to select the architect as designer of his new home.

The house is a two-story frame dwelling facing south on East Milam Street. The house retains a high degree of integrity and is the best example in Wharton of the Queen Anne style.

Marshall's

CAR WASH

979
532-3823

808 N. Richmond Rd., Wharton, TX

Need Space?

CITY-WIDE STORAGE

Climate Controlled
979-532-3823

808 N. Richmond Rd., Wharton, TX

SELF-SERVE

DOG WASH

GENERAL SALES CO.

Eagle Carports Dealer • Lyfe Tyme Pits



**Judge Edwin Hawes House,
309 N. Resident St.**

Rosa E. McCamly had this home built in 1896. In 1897 she sold it to Edwin Hawes (b. 1852), Wharton County judge in the 1870s and 1880s. Hawes had returned to this area after a temporary residency in Kerrville where he was mayor. Here he was a large landowner and a political leader. The double galleried home was purchased in 1944 by George Rust Hawes and his wife Emily Prasifka Hawes, the son and daughter-in-law of Edwin and Uzzie Milburn Rust Hawes. This two-story frame house is an example of center-passage, with Victorian and Classical Revival features.



**O. Brooks-Foote House,
505 N. Houston St.**

Located directly behind the Tom Brooks home on Houston street is the Brooks-Foote home. Tom, son of P.C. and Daisy Speed Brooks, built this house in 1917 and gave it to their daughter, Harriet and her husband A.H. Foote. It is a good example of 20th Century bungalow style, with two-bay L-shaped porch. The house is owned by the children of the late Horton Foote, who grew up in the house behind his grandparents' home on Richmond Road.

**J.H. Speaker House,
414 E. Alabama St.**

Susan Speaker purchased this lot and the adjoining lot in 1893 for \$550. This low cost indicates that the house was not present at that time. In 1907, J.H. Speaker acquired the western lot and is believed to have built the house. The property remained in the Speaker family until 1976. J.H. Speaker was a local black educator who taught in the segregated school in Wharton. At the time of construction, this house was in one of the two primary African-American neighborhoods. The J.H. Speaker House is a one-story frame L-plan dwelling.



**Hamilton House,
325 N. Richmond Road**

A native of Ohio, Joseph Andrew Hamilton served in the Union army during the Civil War. In 1866 he settled in Wharton and held a variety of local political offices. Hamilton purchased this property in 1885 and moved his family into the existing one-story frame house. In 1907 the home was enlarged by raising the original structure and building a new addition underneath. The house features influences of the neo-classical style of architecture. The new addition is brick, and upper wooden floor is thought to have been constructed circa 1875.





**T.M. Neal Home,
225 N. Richmond Road**

Now the site housing the Wharton Chamber of Commerce and Agriculture, the home was built in 1912 by Dr. Thurman McCloud (T.M.) Neal and Mae Vineyard Neal. A doctor, farmer and rancher and civic leader and philanthropist, as a tribute to his wife, he donated the home when he died in 1962.



**Tom N. Brooks Home,
516 N. Richmond Road**

This eclectic dwelling with five-bay porch was constructed circa 1915 by Tom Brooks, dry goods merchant. The house faces Richmond Road which carried traffic between Houston and Victoria through Wharton. The home, its residents and the daily events inspired the writings of Brooks' grandson, Horton Foote. The house sold in 1948 to the Brandl family. In 1998, Charles E. and Paulette Brandl-Roades restored the home to its former grandeur.



**Egypt Plantation,
11914 FM 102, Egypt**

An eight generation long legacy of Scottish and English ancestry can be felt at the Egypt Plantation in Egypt, Texas. established in 1830, when W.J.E. Heard purchased 2,200 acres from John C. Clark for \$111 in gold coins. Heard constructed a double pen, a log home for his family, slave housing, sugar cane, corn and cotton mills.

Sitting on the crossroad of commerce by river and road, the Northington family crossed the Heards' trails often. After becoming good family friends, the families merged in marriage as Heards' eldest daughter, Elizabeth married Mentor Northington. Producers of sugar cane, corn, cotton and pecans, the Heard-Northington plantation kept up with the market and even ventured into both the cattle and horse businesses. In a constantly changing world, the Egypt Plantation has been preserved under the management and ownership of Bud and Mary Margaret Northington. The couple maintains the facility for tours and events.



**Mattress Discounters
of Texas**

**204 West Milam Street
Wharton, Texas 77488**

210-326-3177

mattressdiscounterstexas.com

[facebook.com/
Mattress-Discounters-of-Texas](https://facebook.com/Mattress-Discounters-of-Texas)



Texas Gulf Coast **Antique & Junkin' Trail**

Bohemian Rhapsody II

134 W. Milam St., Wharton, 832-434-8374.

Email: Boh_rhap2@att.net

Over 32 vendors! Everything from rustic, metal décor, painted furniture to chalk paints and knobs for your next project. Vintage & upcycled! Candles, jewelry and more. Open 10 a.m.- 5:30 p.m. Mon.-Sat., 1 p.m. - 5 p.m. Sun.

JT's This & That

232 W. Milam St., Wharton, 979-532-0977.

Vintage salt/pepper shakers, doors and windows, furniture, knik-knaks and more! Open 8:30 a.m.-6 p.m. Tues.-Sat., by chance on Mon.

Milam Emporium

238 W. Milam St., Wharton, 979-531-3103.

Open 10 a.m. - 5 p.m. Mon.-Sat. Closed on Sundays.

Antiques, collectibles, crafts, jewelry, clothing, furniture, and so much more!

Accepting New Vendors!

sylviaacastillo9394@gmail.com

Montgomery Gallery and Frame

110 S. Houston St., Wharton, 979-532-3929.

Website: Montgomerygalleryandframe.net.

Email: mogie@sbcglobal.net.

Vintage look, ready made, and custom made frames. Oil paintings restoration. Photo restoration. Frame restoration. Open 9 a.m.- 6 p.m. Mon.-Fri. 9 a.m.- 3 p.m. Sat., closed on Sun.

Country Duck ReSale Shop

209 E. Milam St., Wharton, 832-628-2310

Plants, Collectibles, Clothing, Piñatas, Salvaged Repurposed Goods

Collector's Alley

210 N. Houston St., Wharton, 979-531-3180

Website: collectorsalley.net

Open 10 a.m. - 5 p.m. Mon-Sat.

1 p.m.- 5 p.m Sun.

Pedal Cars, Coins, Chimes, Collectibles, Antiques, Candles, and More!

Glen Flora Emporium

103 S. Bridge Ave. Glen Flora, 979-677-3249.

Email: emporium@glenflora.com.

Dealers who rent space to sell their merchandise and consignments. On Facebook as "The Glen Flora Emporium." Open 10 a.m.-5:30 p.m. Wed.-Sat., 12 p.m.-5 p.m. Sun.

Burr Trading Company

411 CR 123, Wharton, 979-453-0860.

Buying, selling and repurposing old things. We are in Wharton's Bohemian Rhapsody II, the Glen Flora Emporium, Bar W Field and Warrenton. Personal picks by appointment! Find us on Facebook as Burr Trading Co.



Chad Odom

Executive Director
chad@whartonedc.com

979)532-0999

**1944 N. Fulton St.
Wharton, Texas**

www.whartonedc.com



Wharton's Pick & Flip to Kick Off in 2020!

Makers, flippers and junkers will be the center of attention when the inaugural Pick & Flip happens later this year.

You are invited for a one-of-a-kind event that will be held in conjunction with the 11th Annual Citywide Garage Sale. Participants and you will gather at Monterey Square to see judges decide who has the best DIY skills.

Participants will be given a set amount of time to shop downtown and find their perfect “pick” before rushing back to a DIY station to begin transforming the piece into a “flip.”

Judges will name a winner, and all finished pieces will be up for sale the same day.

Again, the first-ever Pick & Flip will be held in conjunction with the garage sale, which will be Friday, June 5 and Saturday, June 6.

Times of contestant participation will be announced.

Email Pick & Flip organizer Amy Morales at amy@kapeeshllc.com for more information.

Hear Better in 2020!

VOTED BEST HEARING CARE!

Monday - Friday 9 a.m. - 5 p.m.
Call Today for an Appointment

241 W. Milam St. Wharton, TX 77488 979-532-8300	2806 N. Navarro, Ste. #L Victoria, TX 77901 361-575-9911
--------------------------------------------------------------	-----------------------------------------------------------------------

Snow on the Square



Snow on the Square

Snow is not a usual occurrence in this part of Texas, but the Wharton Chamber of Commerce ensures that the Wharton County Courthouse lawn will see the powdery white snow again this year.

Snow on the Square is an event full of fun with snow, food trucks, vendors and a DJ. The big man in red, Santa Claus, himself, will be making an appearance again this year, much to the delight of visitors.

Along with literal tons of snow, characters Elsa, Anna and Olaf will join in on the frozen fun.

Throughout the evening you will hear Christmas caroling by locals merchants, smell the hot cocoa and see the community of

Wharton joining in fellowship... and a few snowball fights.

The Wharton Chamber of Commerce invites you to join in. Through the generosity of local businesses, this event is FREE to the public!

Mark your calendars. The reports are in and there will be snow falling in Wharton on Friday, December 18, 2020!

For more information contact the Wharton Chamber of Commerce office at 979-532-1862 or track the snow by following them on Facebook.



City of

Wharton
TEXAS

120 East Caney Street
Wharton, Texas 77488
Phone: (979) 532-2491
www.cityofwharton.com

Party Under the Bridge



Whartonians and visitors will have the chance to party under the Colorado River Bridge once again this year.

In 2018 the Wharton Chamber of Commerce held the inaugural Party Under the Bridge - Wharton's dedication of the fully restored Colorado river bridge.

"This is a celebration of a historic bridge. The bridge is saved and it's been restored and reopened," said-Executive Director of the Wharton Chamber of Commerce Ron Sanders. "Wharton very much values its history, so just like the courthouse we need to celebrate this as well."

The second annual Party Under the Bridge was held in October 2019. In lieu of a dedication, the community joined together in celebration of Wharton.

"The celebration will bring people together and that's why we want to do it up," Sanders said.

The fun party spirit of the event will remain the same with food and beverage vendors, music and entertainment, face painting and activities for the entire family.

"The Wharton tourism committee felt like the event was a great success and it's different than other Wharton

events," Sanders said. "It uses a different park and it was something unique. Even though we won't be dedicating the bridge we will be thinking of some new things to do there."

The Party Under the Bridge will be under the Colorado River Bridge at Dinosaur Park. Families are encouraged to come play at Dinosaur Park's recently renovated playground and admire the big dinosaur.

The third annual Party Under the Bridge will be on Thursday, October 15, 2020.



TNT Western Wear

*Biggest Selection
Best Prices*

**3030 N. RICHMOND RD.
WHARTON, TX 77488
979-531-8623**

www.TNTwestern.com



find us on
Facebook



Instagram



This map is proudly sponsored by

WHARTON

ECONOMIC DEVELOPMENT

1944 NORTH FULTON STREET
WHARTON, TEXAS 77488

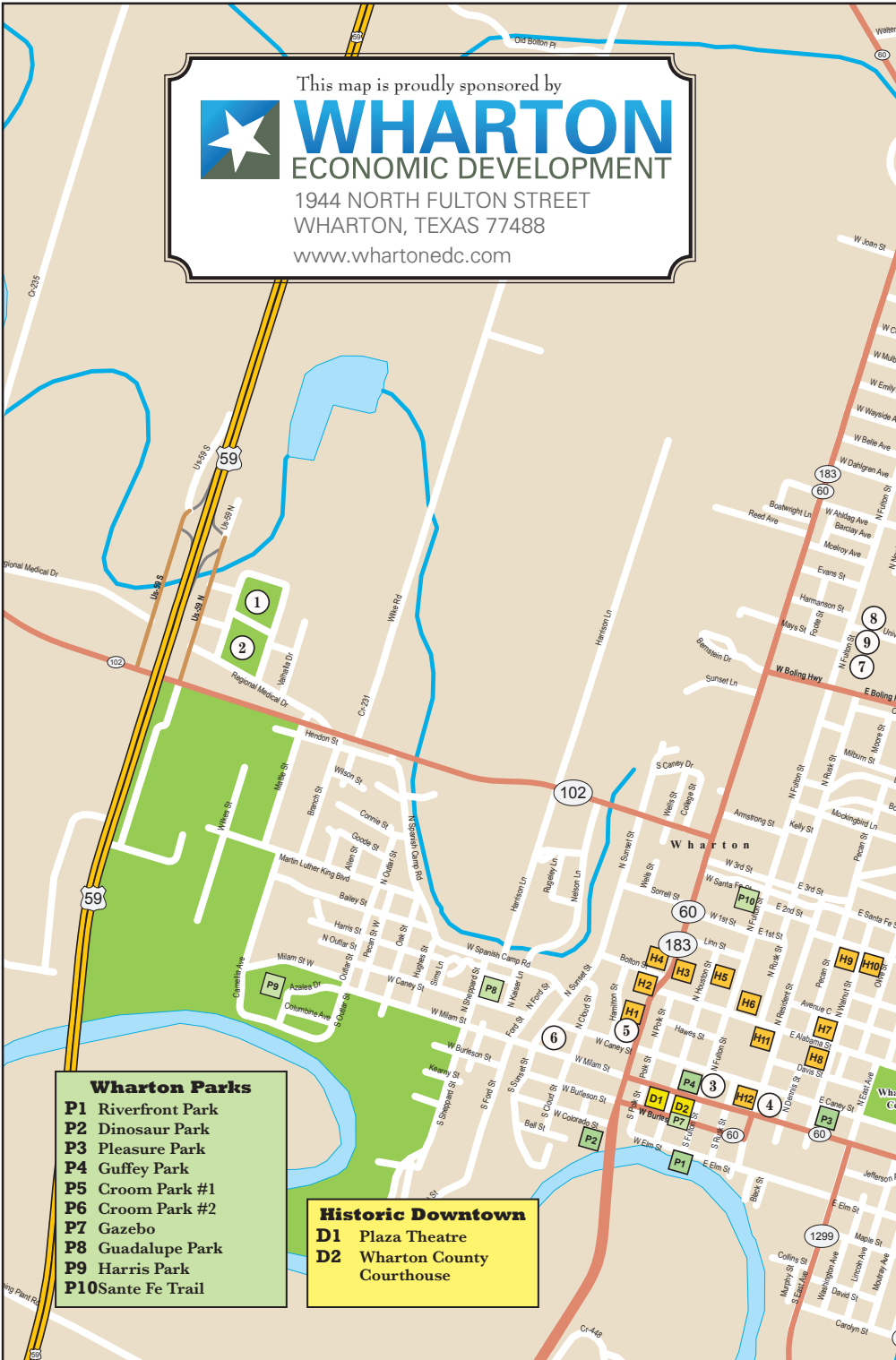
www.whartonedc.com

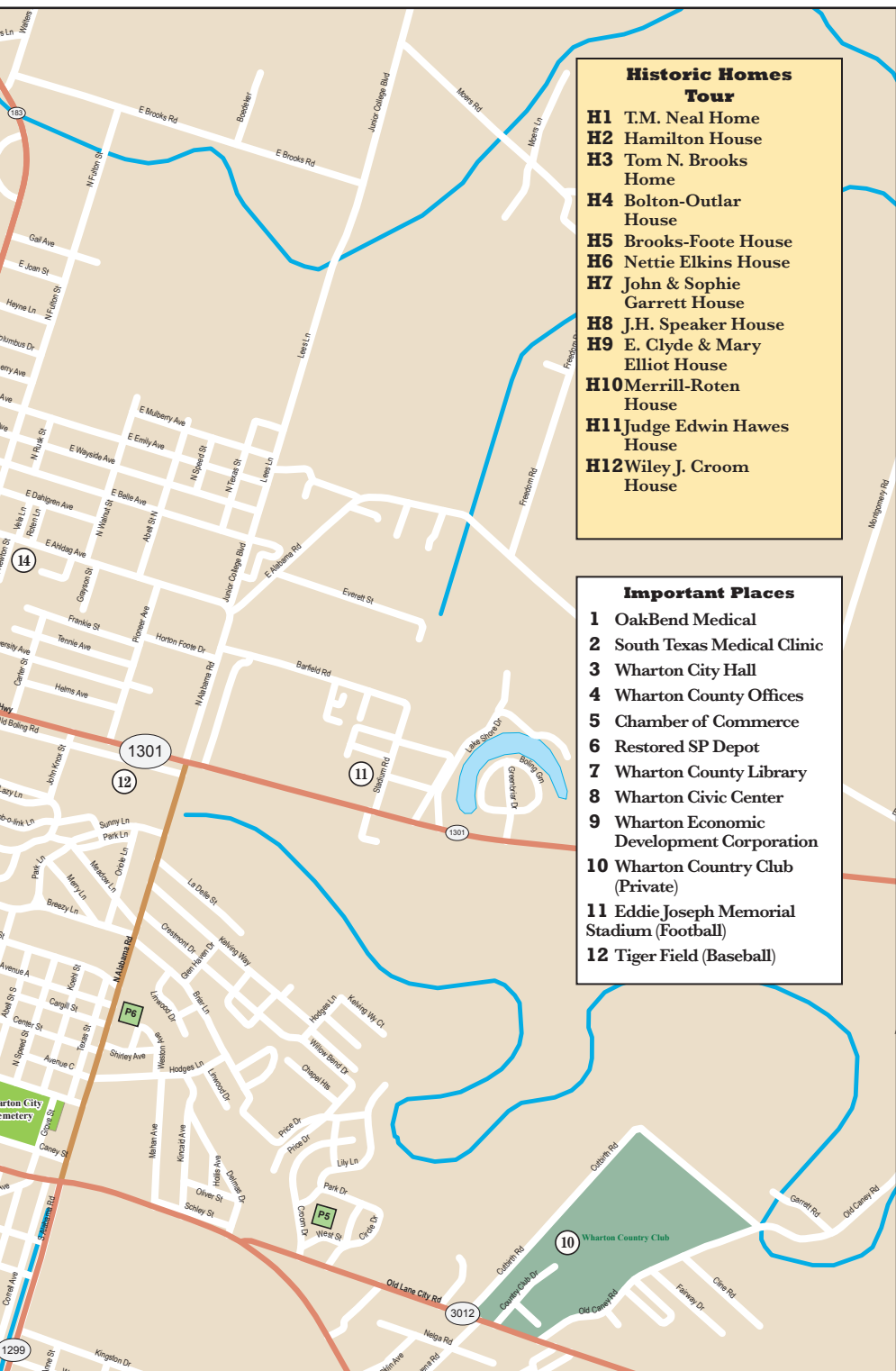
Wharton Parks

- P1** Riverfront Park
- P2** Dinosaur Park
- P3** Pleasure Park
- P4** Guffey Park
- P5** Croom Park #1
- P6** Croom Park #2
- P7** Gazebo
- P8** Guadalupe Park
- P9** Harris Park
- P10** Sante Fe Trail

Historic Downtown

- D1** Plaza Theatre
- D2** Wharton County Courthouse





Historic Homes Tour

- H1** T.M. Neal Home
- H2** Hamilton House
- H3** Tom N. Brooks Home
- H4** Bolton-Outlar House
- H5** Brooks-Foote House
- H6** Nettie Elkins House
- H7** John & Sophie Garrett House
- H8** J.H. Speaker House
- H9** E. Clyde & Mary Elliot House
- H10** Merrill-Roten House
- H11** Judge Edwin Hawes House
- H12** Wiley J. Croom House

Important Places

- 1** OakBend Medical
- 2** South Texas Medical Clinic
- 3** Wharton City Hall
- 4** Wharton County Offices
- 5** Chamber of Commerce
- 6** Restored SP Depot
- 7** Wharton County Library
- 8** Wharton Civic Center
- 9** Wharton Economic Development Corporation
- 10** Wharton Country Club (Private)
- 11** Eddie Joseph Memorial Stadium (Football)
- 12** Tiger Field (Baseball)

Parks and Recreation

The City of Wharton continues to make improvements at its park facilities to enhance the quality of life for residents and visitors.

The Facilities Maintenance Department responsibilities include maintaining approximately 100 acres of City Parks and 65 pieces of park equipment.

“We have around 100 acres throughout the city dedicated for outdoor fun,” said the City of Wharton’s Director of Facility Maintenance and Parks, Bob Baker.

In 2019 the city installed restroom facilities along with new playground equipment at the park locations that had been missing those accommodations.

“I’m really proud of how the city is represented in our parks,” said Baker. He continued, “We have

some pretty neat, new playground equipment and now almost all of our parks have restroom facilities.”

“It just makes it so much more inviting to families and young adults to utilize them,” said Baker.

Other accommodations found at some of the city’s parks include:

- Pavilions with electrical hookups
- Basketball courts
- Soccer fields
- Baseball/Softball fields
- Volleyball sand courts
- Picnic benches
- Shading trees
- Piers
- Benches

If you wish to reserve the pavilions or have a function at any of the parks, contact Wharton City Hall at 979-532-2491.

For locations of the parks, see the map on Pages 24-25.

City of Wharton Parks & Recreational Facilities

- Croom Park#2, North Alabama Street and Shirley Avenue
- Croom Park#1, FM 3012
- Dinosaur Park, West Colorado and Bell Street
- Gazebo, West Burleson Street and South Fulton Street
- Guadalupe Park, North Sheppard Street and West Caney Street
- Guffey Park, Houston and Caney Streets
- Harris Park, South Outlar Street and Harris Street
- Pleasure Park, North Walnut Street and East Mulberry Street
- Railroad Depot, Sunset Street and West Milam Street
- Riverfront Park, Elm and Fulton
- Santa Fe Trail, North Fulton Street and East Santa Fe Street
- Wharton Municipal Pool, Junior College Boulevard and East Belle Avenue

Wharton Civic Center

The Wharton Civic Center is the hub for many of the community's special moments — award banquets, seminars, training sessions, business meetings, wedding receptions, rehearsal dinners, baby showers, parties and celebrations, philanthropic events, private classes, job fairs and so much more.

Located 50 miles outside of Houston, the Wharton Civic Center is the perfect location to host your event without the traffic and high fees of the big city.

The Civic Center is an adaptable, dynamic event space that was built on southern hospitality. Whether you're throwing a large event or an intimate gathering, you will be in good hands.

When the facility was given to the city in 1990, Jo Knezek took the director's position and for 25 years she developed the Civic Center into a reputable venue known throughout the area. She hosted events for celebrities such as Frank Sina-

tra, Jr. and Nancy Sinatra, even George W. Bush when he was governor.

The Wharton Civic Center is located at 1924 North Fulton Street in Wharton. For information call 979-532-2491 ext. 603



Banking...Only Better!

TE★ASGULF

FEDERAL CREDIT UNION

Wharton County's Credit Union

2101 N. Fulton St.
Wharton, TX 77488
(979) 282-2300

1313 West Loop
El Campo, TX 77437
(979) 578-9000

www.texasgulffcu.org
(800) 647-8428



County, city, school Information

(all area codes 979 unless otherwise indicated)

EMERGENCY NUMBERS

All emergencies: Dial 9-1-1

Wharton County Sheriff's Dept.: 532-1550

Wharton Police Dept.: 532-3131

Wharton Fire Dept.: 532-4811, Ext. 400

Wharton EMS: 532-4811, Ext. 700

Department of Public Safety (Pierce): 532-1700

• Other helpful numbers

The Crisis Center: 531-1300

Family and Protective Services: 532-5310

The Share Center: 282-2021

Salvation Army: 532-1550

Red Cross: 531-1128

Wharton Chamber of Commerce: 532-1862

WHARTON COUNTY

co.wharton.tx.us

Wharton County Annex

309 E. Milam St.

Wharton, TX 77488

Phone: 532-4612

• Wharton County commissioners court

County Judge: Philip Spenrath, 532-4612

Commissioners

Precinct 1: Richard Zahn, 532-1991

Precinct 2: Rusty Graves, 335-6210

Precinct 3: Steven Goetsch, 543-0091

Precinct 4: Doug Mathews, 543-3561

• Other county officials

Sheriff: Shannon Srubar, 532-1550

District Attorney: Dawn Allison, 532-8051

County Attorney: Trey Maffett, 532-2591

County Clerk: Barbara Svatek, 532-2381

District Clerk: Kendra Charbula, 532-5542

County Treasurer: Donna Thornton, 532-2971

County Tax Assessor-Collector: Grace Utey, 532-3312

County Auditor: Barbara Starling, 532-2640

Elections administrator: Cindy Richter, 532-0193

Emergency management coordinator:

Andy Kirkland, 532-1123

Veteran Services Officer:

Mike Harbaugh, 532-1311

DINING • TAKE OUT • CATERING

HINZE'S

BAR-B-QUE

**GENUINE PECAN
SMOKED BAR-B-QUE**

**1917 N. Richmond Rd.
Wharton, TX 77488**

979-532-2710

HINZESBARBQUE.COM

HINZE'S

Country Kitchen

**1512 E. Milam St.
Wharton, TX 77488
979-532-1799**

Daily Specials • Dining • Take Out

- Constables
Precinct 1: Michael Hubenak, 532-3941
Precinct 2: John Szymanski, 335-6210
Precinct 3: Robert Holder, 648-2022
Precinct 4: Shawn Ferguson, 543-1147
- Justices of the Peace
Precinct 1: Jared Cullar, 532-3941
Precinct 2: Glenn Russell, 335-6210
Precinct 3: Donna Wessels, 648-2363
Precinct 4: Timmy Drapela, 543-4322
329th District Court Judge: Randy Clapp, 532-1514
23rd District Court Judge: Ben Hardin, 864-1205

CITY OF WHARTON

cityofwharton.com

City Hall
120 E. Caney St.
Wharton, TX 77488
Phone: 532-2491
Fax: 532-0181

• City officials

City Manager: Andres Garza, Jr.
City Finance Director: Joan Anel
City Secretary: Paula Favors
Director of Facilities Maintenance: Bob Baker
Public Works Director: Wade Wendt
Police Chief: Terry David Lynch
Fire Chief: Anthony Abbott
EMS Director: John Kowalik

• Other city departments

Wharton Economic Development Corp. Director: Chad Odom, 532-0999
Wharton Civic Center: 532-4811, Ext. 600
Municipal Court: 532-4811, Ext. 532

WHARTON COUNTY JR. COLLEGE

wcjc.edu

• Wharton campus

911 Boling Highway
Wharton, TX 77488
Phone: 532-4560
President: Betty McCrohan
Vice President of Administrative Services: Bryce Kocian
Vice President of Technology and Institutional Research: Pam Youngblood
VP of Student Services: David Leenhouts
Dean of Financial and Business Services: Gus Wessels, Jr.
Vice President of Instruction: Leigh Ann Collins
Dean of Vocational Instruction: Megan E. Costanza

WHARTON ISD

whartonisd.net

Education Support Center
(Administration Building)
2100 N. Fulton St.
Wharton, TX 77488
Phone: 532-3612
Superintendent: Tina Herrington

• Wharton High School

(Grades 9-12)
No. 1 Tiger Ave.
Wharton, TX 77488
Phone: 532-6800
Principal: Olatunji Oduwole
Associate principal: Efrem Pierce
Assistant principal: Alan Black
Assistant principal: Yemi Oduwole

• Wharton Junior High School

(Grades 7-8)
1120 N. Rusk St.
Wharton, TX 77488
Phone: 532-6840

• Wharton Elementary School

(Grades 3-6)
2030 E. Boling Hwy.
Wharton, TX 77488
Phone: 532-6882

• Sivells Elementary School

(Grades PreK-2)
1605 Alabama Road
Wharton, TX 77488
Phone: 532-6866

FAITH CHRISTIAN ACADEMY

wharton-fca.org

(infants to Grade 12)
Faith Christian Academy of Wharton
5227 FM 1301
Wharton, TX 77488
Phone: 531-1000
Email: fcawharton@gmail.org
Administrator: Sandra Allen
Assistant Administrator: Diana Gajewsky



TEXAS SALSA SHOWDOWN WHARTON, TX

The weather will be hot and the Texas Salsa Showdown promises to be even hotter when the event takes place Friday, March 27 and Saturday, March 28 at the Wharton Civic Center, 1924 N. Fulton Street.

This will be a celebration of salsa with a South Texas flavor and flair. And, if Tex-Mex is your thing and you frequently wish for bottomless chips and salsa, this festival and the cook-off is for you.

Plans are to have a beef fajita cook-off and brisket cook-off. You will be able to view participants with various experiences compete in salsa categories like home chef, restaurant and commercial.

Friday night will have a Tejano or Cajun concert.

A hot pepper eating contest will also be held on Saturday, beginning at 3 p.m. If you have what it takes to be a contestant, you would be required to chew and swallow up to 8 increasingly spicy peppers, starting with a "simple" jalapeno.

On Saturday, you may sample all of the salsas, vote for your favorite, then enjoy entertainment by local country artists.

Admission to the Texas Salsa

Showdown is \$10. You may find more information on Texas Salsa Showdown on Facebook.

Kapeesh Cares, Inc. invites you to dip right in on the spicy good time.

Call Kapeesh Marketing at 713-570-6603 with any questions. You may also email at hello@kapeeshllc.com.

Amy Morales, founder of Kapeesh Cares, Inc., is the event organizer.



**139 S Dill Street
East Bernard, TX**

Phone: 979-335-7921

**1-800-844-MEAT
(6328)**



This Spring the Wharton Chief of Police Terry David Lynch, and the Wharton Police Department will host its 3rd Annual Cops n' Rodders Car Show. This will take place in the front parking area of the Wharton Civic Center, 1924 N. Fulton St, Wharton TX 77488.

This is an open car show and community event, free to all spectators.

Categories for awards are to be announced but there will be nearly 30 awards. Bring your Oldies, Classics, Muscle, Rat-Rods or Trucks and enjoy the day with us.

A \$20.00 entry fee will be charged for entries.

Participants can pre-register at the following locations:

- Wharton Police Department
1407 N. Richmond Rd
Wharton TX 77488
(979) 532-3131
- Pekar's Body Shop
2720 N. Richmond Rd
Wharton TX 77488
(979) 532-5805

Registration will be available on the day of event starting at 8:00 a.m. Judging begins at 12:00 Noon, with

winners announced at 2:00 p.m.

The event is sponsored in part by Pekar's Body Shop, The Trailer Place, and Relentless Defender Apparel. Car Show T-Shirts will be sold at event.

The tentative category list includes close to 30 awards, some of which include: Mayor's Choice, Best Of Show, People's Choice, Chief of Police's Choice and Relentless Defender Choice.

Event date tentatively set for April 25, 2020.

For more information look for the Cops 'n Rodders event on Facebook or contact the WPD at 979-532-3131.

★ **NEWFIRST** | National Bank

**For Generations,
We've Made it Personal ...
118 years, to be exact.**

Wharton
101 E. Milam
979-532-1650

El Campo
202 E. Jackson
979-543-3349



FDIC



Wharton's Tallest Cash Crop

The pecan is the only commercially grown nut in Texas and is native to most of the state's river valleys. The tree, one of the most widely distributed trees in the state, is native to 152 counties and is grown commercially in some thirty additional counties. It is also widely used as a dual-purpose yard tree. The size and quality of pecans are influenced by the number of leaves per nut. More leaves are needed for large nuts.

Pecan is Algonquian for "hard-shelled nut." The first recorded description of pecans is from 1533. As every Texas schoolchild learns, the Spaniard Cabeza de Vaca was shipwrecked near Galveston in 1528, was captured by Karankawas, and wandered with them in Texas for seven years. In his diary, he writes about tribes congregating every other winter along certain river valleys to subsist on flavorful nuts. He called them, simply, *nueces* (nuts), or *nogales*, meaning walnuts. In the Texas/Mexican borderlands even today, *nueces* remains the most common term for pecans.

The pecan tree was adopted as the official state tree of Texas on March 20, 1919 by Governor William Pettus Hobby. The choice of the Pecan tree as the official state tree of Texas was said to have been influenced by popular former Governor James Hogg's love of the pecan tree and his request to have one planted at his grave site.

Records indicate that the nut was exported from the state before 1860. Exports from Galveston alone amounted to 1,525 bushels in 1850 and 13,224 in 1854. In 1866, 8,962 barrels were shipped from Indianola, and 1,500 barrels from Port Lavaca.

The value of the pecan, however, was apparently not fully recognized for many decades, for many trees were cut to make way for cotton, and the wood was used for making

wagon parts and farm implements.

Immediately after the Civil War and into the 20th century, gathering wild pecans provided a necessary livelihood for many people, who had few other economic options.

By 1904 pecan trees had been cut to such an extent that laws to prevent their complete destruction were considered. The financial value of the crop was soon recognized, and pecans became one of the leading money crops in the state.

Texas pecan production in 1910 was 5,832,267 pounds. In 1914 all but eight counties reported pecan trees growing within their boundaries.

Exports from Texas during the 1920s ranged from twenty-five to 500 carloads a year. During the years of light production practically the entire crop was used in the state, but during the years of heavy production about 75 percent of the crop was exported to northern and eastern markets, principally to shellers and candy makers. The pecan crop in 1932 totaled 19,500,000 pounds and was valued at \$975,000. The average annual production for the 1936–46 period was 26,815,000 pounds. The 1948 pecan crop, the third largest on record, totaled 43,000,000 pounds and was valued at \$4,860,000, or 11.3 cents a pound. The 1949 crop was estimated at 36,000,000 pounds. The 1945 census estimated that there were 3,212,633 pecan trees in Texas.

The Lone Star State produced about 30 percent of the nation's crop during these years and usually led the states in pecan production.

Pecans were shelled on a commercial basis before 1900 by G. A. Duerler of San Antonio, who used railroad spikes for cracking the pecans and sacking needles for picking out the meat. The pecan-shelling industry grew



gradually, and more mechanical devices were used in the plants.

During the Great Depression an increase in cheap labor encouraged hand shelling, and many home shelling plants emerged. These small plants soon became a threat to the mechanized plants and forced them also to employ hand labor in order to compete. During the depression period 12,000 to 15,000 people were employed in the shelling industry in San Antonio alone, where several hundred plants were operating. In 1938, when wage increases were required by the Fair Labor Standards Act, unskilled labor became unprofitable, and the use of machinery again became necessary.

A few fully mechanized modern plants soon replaced the hundreds of home shelling plants. By the 1950s shelling plants were located at San Antonio, Tyler, Comanche, Clarksville, Taylor, Denison, Fort Worth, Dallas, and San Angelo. A plant at Weatherford in Parker County processed shell and other pecan wastes into oil and tannin for use in tannic acid.

By the 1950s pecans were being divided into two general kinds, natives and improved varieties. Most Texas-grown pecans were native and were often shelled commercially before marketing, while the improved varieties were more often sold in the shell. In the 1950s Texas led the nation in total number of pecan trees and was usually first in annual production. The 1954 crop totaled 22 million pounds and was valued at \$5,886,000. The 1960 crop comprised more than 21 percent of the nation's total crop. That year 2,000,000 trees on nearly 16,000 farms produced over 8½ million pounds of pecans valued at \$8,600,000.

The state's pecan industry continued to develop during the 1960s due to the increased cultivation of improved varieties, the increased use of irrigation, and the development of a mechanical harvester. The 1964 census reported a total of 1,875,906 pecan trees (one-third improved varieties) on 11,074 farms. The 1965 crop was a record 62 million pounds valued at \$11,000,000.

Two factors that greatly increased yields

in these years were the development and use of new pecan varieties and many county and regional pecan-grading demonstrations. Texas varieties include Western, Desirable, Wichita, Choctaw, Cheyenne, Kiowa, Sioux, Caddo, Burkett, and a number of others. In 1972 the state production was a huge 75,000,000 pounds valued at \$30,780,000. Texas ranked second in the nation in production in 1978, producing 22,000,000 pounds valued at \$20,160,000, or 91.6 cents a pound.

In 1984 Texas ranked second nationally in pecan production; 25,000,000 pounds were produced that year, valued at \$22,500,000. Leading Texas counties in production in 1984 were Hood, El Paso, Pecos, San Saba, Mills, Comanche, Wharton, and Gonzales. By the early 1990s a Texas Pecan Producers Board existed, and a Texas Pecan Growers Association, organized in 1921, ran annual pecan meetings at the state level.

In Wharton, Texas pecan trees can be found all along the Colorado River and throughout the city's parks and pastures. Pecan trees can even be found surrounding the Wharton County Courthouse.

Pecan picking can be profitable commercially, as well as added household income for families and a whole lot of fun too!

From the months of October through February, Wharton residents can sell their pecan loot to pecan houses. Two of which are Bagley Pecan House and Atkinson Pecans.

Even though the individual participation of pecan picking has dropped over the last 15 years, Whartonians have been known to sell 2,500 to 3,000 pounds of pecans each day. Native pecans are the most popular and fetch the bigger payout with about 65 to 75 cents per pound.

The recreation that pays also saves. Not only can individuals and families profit from pecan picking, but the abundance of pecans can also save a pretty penny. Average retail price for shelled pecans in 2019 was \$9 per pound.

Wharton County Junior College



By BETTY A. MC-CROHAN

Wharton County JC President

Wharton County Junior College has provided an affordable, high-quality education to the Gulf Coast Region of Texas for more than 70 years.

Since its founding in 1946, the college has grown dramatically. Beginning as a single campus servicing 200 students, WCJC today serves the educational needs of more than 7,400 students at four campuses: Wharton, Sugar Land, Richmond and Bay City.

Whether your goal is to complete coursework and transfer to a four-year university or obtain a certificate and find a rewarding career, WCJC can help you achieve that goal. The college offers more than 40 programs including associate of applied science degrees, associate of arts degrees, certificates, dual credit programs and a host of continuing education courses that include everything from aerobics to tax preparation.

WCJC further serves as a cultural haven to the surrounding communities, offering drama performances, choir and band concerts and art shows throughout the year. Our sports programs – baseball, rodeo and volleyball – also provide a great source of entertainment while allowing alumni to come out and cheer on the new generation of Pioneers.

Check out the college's website – www.wcjc.edu – for ongoing announcements and updates on calendar events. If you have any questions, give us a call at one of the numbers listed on the website. I hope to see you on campus!

WCJC: HIGHER EDUCATION IN WHARTON



From completing several large scale projects to achieving reaccreditation, Wharton County Junior College has continued to upgrade its services in an ongoing effort to provide affordable, high quality education to residents of Texas' Gulf Coast Region.

In February, the college officially celebrated the completion of the newly renovated Johnson Health Occupations Center on the Wharton campus. The \$6.5 million project – made possible through contributions from the Johnson Foundation and Gulf Coast Medical Foundation – included the construction of a new 18,000 square foot addition and the renovation of the existing 34,000 square foot structure. The building houses the bulk of the college's Allied Health programs.

In April, the college dedicated the Gene Bahnsen Gymnasium on the Wharton campus. The facility was named in honor of longtime athletic director and coach Gene Bahnsen, who retired this past summer after 60 years of service to the college.

In June, the college received reaccreditation from the Southern Association of Colleges and Schools' Commission on Colleges (SCSAC). This reaccreditation ensures the degrees and course credits awarded by WCJC are viable and worthy of transfer to other educational institutions. The accreditation process is completed every 10 years and requires extensive work on the part of administration and staff.

The college has also implemented several security upgrades at its campuses in Wharton, Bay City and Richmond. These include the installation of surveillance cameras, an access card system and an intercom system in the Presidential Suite on the Wharton campus. A project to install digital monitors for emergency notifications is currently ongoing.

This fall, the college also completed a \$1.5 million ballpark on the northeast side of the Wharton campus. Funding by a generous donation from Houston resident Duncan Corbett, the park features batting cages, an irrigated field, an air-conditioned press box and seating for 440 spectators.

WCJC is a Texas public, two-year, comprehensive community college offering a wide range of postsecondary educational programs and services including associate degrees, certificates, continuing education courses, cultural affairs and leisure-time activities for the benefit of the community and a population of students that varies in age, background and ability. The college operates campuses in Wharton, Bay City, Sugar Land and Richmond. For more information, visit the website at www.wcjc.com

Wharton Chamber of Commerce & Agriculture

2020 Calendar of Events

Friday, February 28

Winter Lunch & Learn

Thursday, March 19101st Annual Chamber Banquet**Friday, May 15**

Spring Lunch & Learn

Friday & Saturday, June 5-612th Annual Citywide Garage Sale**Saturday, June 27**

Fireworks Show

Friday, July 17

Summer Lunch & Learn

Saturday, September 1213th Annual Golf Tournament**Thursday, October 15**3rd Annual Party Under the Bridge**Friday, November 6**

Fall Lunch & Learn

Tuesday, November 2440th Annual Christmas Holiday Parade**Friday, December 18**3rd Annual Snow on the Square

Utility Information

If you're a newcomer here, welcome to Wharton!

If you're moving into a new home, you will need to get your utilities set up. Read the information below.

New water and sewer customers within the Wharton city limits must provide a copy of a lease agreement or proof of ownership for the property, a valid U.S. identification and a deposit in the amount of \$100.

Senior citizens are eligible for a reduced deposit. This service also includes garbage pickup.

For more information, call 979-532-2491.

For residential customers outside of the Wharton city limits, contact a water well drilling provider.

Centerpoint Energy is the area's

natural gas provider.

Applications can be filled out online at centerpointenergy.com or by calling 713-659-2111.

Texas electricity customers can visit Power to Choose, the official and unbiased electric choice website of the Public Utility Commission of Texas. Compare offers and choose the electric plan at powertochoose.org.

Chamber members can find highly-competitive rates through the chamber's Excite Energy Power Alliance. See more information about the alliance at whartonchamber.com.

We Mean Business

- Networking
- Referrals
- Continuing Education
- Governmental Affairs
- Traveler Services
- Convention Services
- Business Promotion
- Tourism Marketing



225 N. Richmond Road
Wharton, Texas 77488

Tel. 979-532-1862

Fax 979-532-0102

whartonchamber.com



BUSINESS DIRECTORY

Accountants- Certified Public

Dobbins & Sheek, CPAs, LLC
300 W. Burleson St., Wharton
(979) 532-4852

Stephenson-LeGrand, PLLC.
1609 N. Richmond Rd.,
Wharton
(979) 532-5964

Accounting & Tax Service

Dobbins & Sheek, CPAs, LLC
300 W. Burleson St., Wharton
(979) 532-4852

Stephenson-LeGrand, PLLC.
1609 N. Richmond Rd.,
Wharton
(979) 532-5964

Security Finance
412 N. Alabama Rd.
Wharton
(979) 532-8003

Agriculture

Bagley Pecan House
902 N. Richmond Rd., Wharton,
(979) 532-4020

Caney Valley Cotton Company
2203 N Richmond Rd.,
Wharton
(979) 532-5210

Coastal Warehouse
602 N. Sunset, Wharton
(979) 532-8550

Hawes Company
614 E. Milam, Wharton
(979) 532-1321

Maxim Production Company, Inc.
580 Maxim Dr., Boling
(979) 657-2891

Moses Gin Inc.
209 N. Cloud, Wharton
(979) 532-3522

Northington Ranch Corp.
P.O. Box 222, Egypt
(832) 338-5855

Wharton Feed & Supply
1105 N. Fulton St., Wharton
(979) 532-8533

Wharton Tractor Company
1007 N. Richmond Rd.,
Wharton
(979) 532-3172

Aircraft Charter-Rental & Leasing

Silver Star Helicopters LLC
1201 Chapel Ln. El Campo
(979) 541-9823

Alterations

Denise's Alterations & Things
223 W. Milam St., Wharton
(979) 532-0816

Animal Rescue

Friends of Wharton TX Animal
Control
1390 CR 467, Wharton
(979) 533-2081

Antiques

Bohemian Rhapsody II
134 W. Milam St., Wharton
(979) 532-5577

Glen Flora Emporium
103 S. Bridge Ave., Glen Flora
(979) 677-3249

J.T.'s This & That
232 W. Milam St., Wharton
(979) 532-0977

Montgomery Gallery & Frame
110 S. Houston St., Wharton
(979) 532-3929

Apartments

Morning Star Apartments
1520 Barfield Rd., Wharton
(979) 532-4007

Sweetwater Apartments/SETH
200 McElroy Avenue #8,
Wharton
(979) 532-2001

Architects & Architectural Illustrators/Planners

Stern and Bucek Architects
1610 Commerce St., Houston
(713) 527-0186

Art Galleries/Graphic Arts

Montgomery Gallery & Frame
110 S. Houston St., Wharton
(979) 532-3929

Assisted Living

Elmcroft
1930 Briar Ln., Wharton
(979) 532-5800

Attorneys

Howard H. Singleton, P.C.
109 E. Milam St., Wharton
(979) 532-9800

John Roades, Attorney at Law
1201 N. Alabama Rd., Wharton
(979) 532-5320

Law Office of James Perez
105 W Burleson St., Wharton
(979) 532-5500

Paul Webb, Attorney at Law
221 N Houston St., Wharton
(979) 532-5331

Wadler, Perches, Hundl &
Kerlick, Attys at Law
101 West Burleson St., Wharton
(979) 532-3871

Automobile Dealers

Don Davis Motor Company,
Inc.
2011 N. Mechanic St., El
Campo
(979) 543-3291

Don Elliott Autoworld
1225 N. Richmond Rd.,
Wharton
(979) 532-2150

Von-Wil Ford
316 N. Richmond Rd., Wharton
(979) 532-4360

Automobile Parts

Richmond Road Truck & Auto
Parts Company (NAPA)
1739 N. Richmond Rd.,
Wharton
(979) 532-4510

Star Parts
1119 E. Milam St., Wharton
(979) 532-1500

Von-Wil Ford
316 N. Richmond Rd., Wharton
(979) 532-4360

Automobile Repairs & Service

Big G Auto
2313 N. Richmond Rd.,
Wharton
(979) 532-2080

Caney Auto Service
607 FM 102, Wharton
(979) 532-4160

Don Davis Motor Company, Inc.
2011 N Mechanic St., El Campo
(979) 543-3291

Don Elliott Autoworld
1225 N. Richmond Rd.,
Wharton
(979) 532-2150

Macek's Garage LLC
4920 FM 3012, Wharton
(979) 532-5139

Pekar's Body Shop
2720 N. Richmond Rd.,
Wharton
(979) 532-5805

Von-Wil Ford
316 N. Richmond Rd., Wharton
(979) 532-4360

Bakeries

H.E.B. Grocery Company
1616 N. Alabama Rd., Wharton
(979) 282-2773

Banks & Banking Associations

Prosperity Bank - Wharton
143 W. Burleson St., Wharton
(979) 282-2000

Texasgulf Federal Credit Union
2101 N. Fulton St., Wharton
(979) 282-2300

The First State Bank
505 E. Boling Hwy., Wharton
(979) 532-0404

Barber Shop

Clean Cuts
620 Richmond Rd., Wharton
(832) 603-7121

Baseball Training Equipment

Muhl Tech Gatekey Mfg.
503 Ogden St., Wharton
(979) 532-8155

Beauty Salons

Alicia's Beauty Salon
1501 N. Fulton St., Wharton
(979) 531-0678

Hair on the Square
212 W. Milam St, Wharton
(979) 531-3133

The Cut Studio
217N. Richmond Rd, Wharton
(979) 877-1721

Boutiques & Specialty Shops

Denise's Alterations & Things
223 W. Milam St., Wharton
(979) 532-0816

K&D Design
206 W. Milam St., Wharton
(979) 532-3250

Milam Emporium
238 W. Milam St., Wharton
(979) 559-1200

TNT Western Wear Inc.
3030 N Richmond Rd. Wharton
(979) 531-8623

Cafeteria

Great Western Dining
911 Boling Hwy., Wharton
(903) 327-5189

Car Wash

City-Wide Storage
808 N. Richmond Rd., Wharton
(979) 532-3823

Carpet & Rug Dealers/ Cleaning

Duraclean
17108 CR 278, East Bernard
(979) 335-4375

Caterers

Great Western Dining
911 Boling Hwy., Wharton
(903) 327-5189

Hinze's Bar-B-Que
1917 N. Richmond Rd., Whar-
ton
(979) 532-2710

Mrs. T's Kitchen
608 CR 243, Wharton
(979) 532-5798

Reyna's Cafe
7902 US 59, Hungerford
(979) 531-0880

Vincek's Smokehouse
139 S. Dill, East Bernard
(979) 335-7921

Child Development & Day Care

Small Blessings Child Care Center
1717 Pioneer Ave., Wharton
(979) 488-2818

Creative Care Children's School
909 Olive Street
Wharton
(979) 532-0830

Churches

Caney Creek Church
128 W. Milam St., Wharton
(979) 532-2533

First Baptist Church
507 N. Fulton St., Wharton
(979) 532-4295

First Presbyterian Church
1602 John Knox St., Wharton
(979) 532-3375

First United Methodist Church
1717 Pioneer Ave., Wharton
(979) 532-1100

Grace Community Fellowship
1900 E. Boling Hwy., Wharton
(979) 532-3999

Holy Family Catholic Church
2011 Briar Ln., Wharton
(979) 532-3593

Rescue Church
915 FM1299, Wharton
(979) 531-3051

St. John's Lutheran Church
614 Pecan St., Wharton
(979) 532-2336

St. Johns Catholic Church
101 Church St., Hungerford
(979) 532-4747

St. Paul Lutheran Church
325 N. East Ave., Wharton
(979) 532-2315

St. Thomas Episcopal Church
207 Bob-O-Link Dr., Wharton
(979) 532-2123

Cleaners

Lone Star Cleaners
1309 N. Alabama Rd., Wharton
(979) 532-8500

Clinics & Medical Groups

AccessHealth
1720 B F Terry Blvd. Suite A,
Rosenberg
(281) 238-2303

Gulf Coast Family Medicine
10119 US 59 Hwy, Wharton
(979) 532-1159

Memorial Hermann Medical
Group
2100 Regional Medical Dr.,
Wharton
(979) 532-1700

Nephrology Leaders and Assoc.,
PLLC
205 N. Alabama Rd., Wharton
(979) 531-1822

Clubs

Pilot Club of Wharton
P.O. Box 963, Wharton

Rotary Club of Wharton
P.O. Box 303, Wharton

Wharton Lions Club
P.O. Box 106, Wharton

Coffee Shops

Milam Street Coffee
200 W. Milam St., Wharton
(979) 282-9771

Collection Agencies

McCreary, Veselka, Bragg & Allen
PC
P.O. Box 469, Wharton
(979) 282-8089

Communications and Telecommunication Consultants

Computer Center & Radio Shack
119 N. Mechanic St., El Campo
(979) 543-1949

Tec-Tronic Systems
423 E. Boling Hwy., Wharton
(979) 532-0011

Computer Services

Computer Center & Radio Shack
119 N. Mechanic St., El Campo
(979) 543-1949

Computers-Computer Products

Computer Center & Radio Shack
119 N. Mechanic St., El Campo
(979) 543-1949

Concrete

Alamo Concrete
7169 US 59 Rd., Wharton
(979) 532-1962

Total Outdoor Solutions, LLC
1825 Foote St., Wharton
(979) 559-6027

Consultants

Kapeesh
247 W. Milam., Wharton
(713) 570-6603

Construction

Dream Maker Construction
523 Charlene St., El Campo
(979) 543-6800

Contractors-Electrical, Plumbing & Mechanical

Rath Plumbing
216 N. Richmond Rd., Wharton
(979) 532-0223

Roberson Air Conditioning &
Refrig., Inc.
200 E. Milam St., Wharton
(979) 532-5101

Convenience Stores

Circle K / Corner Store
405 East Boling Hwy., Wharton
(979) 532-1144

Cracker Barrel Partnership, LTD
PO Box 18289, Sugarland
(361) 655-5900

Love's Travel Stops
US 59@FM 1161/Walnut St.,
Hungerford
(405) 463-8069

Counseling

Bay Area Council on Drugs &
Alcohol
2911 South Shore Blvd. STE
150, League City, TX 77573
(800) 510-3111

Crisis Center
Wharton 116 E. Burleson,
Wharton
3010 6th St., Bay City
(979) 245-9109

StraightWay, Inc.
FM 1161 W., Hungerford
(979) 532-5613

TEXANA Center
4910 Airport Ave. Bldg. B,
Rosenberg
(281) 239-1300

Therapy Solutions 4U, PLLC
1114 N. Fulton St., Wharton
(979) 282-8100

Victory in Jesus Recovery Center
218 N. Houston St., Wharton
(979) 532-2319

Dancing

Taps & Mats Dance Studio
1109 N. Fulton St., Wharton
(979) 532-0602

Dentists/Dental Labs/ Dental Care

Boehm Dental, PLLC
808 North Fulton St., Wharton
(979) 532-4400

David Tripulas, DDS
1016 Sunny Ln., Wharton
(979) 532-4663

Travis Scott Pinkston, D.D.S.
1506-E N. Alabama Rd.,
Wharton
(979) 532-8110

J.R. Kieler, Jr., DDS
1016 Sunny Ln., Wharton
(979) 532-3636

Disc Jockey

Angel Wings Wharton
119 S. Fulton St., Wharton
(979) 531-9202

JP Express Mobile DJ Service
126 CR 231, Wharton
(979) 533-1852

Dialysis Center

Wharton Kidney Center Davita
103 W. Ahldag, Wharton
(979) 282-8484

Dog Training

Mic & Mac Dog Training & Grooming
6203 West Creek Rd., East Bernard
(979) 253-2303

Drug Store/Pharmacy

Savon Drugs
123 Leveridge Rd., East Bernard
(979) 335-4810

Electrical Equipment & Supplies

Barbee Services
401 E. Caney St., Wharton
(979) 532-4570

Tec-Tronic Systems
423 E. Boling Hwy., Wharton
(979) 532-0011

Electricians

Barbee Services
401 E. Caney St., Wharton
(979) 532-4570

Emergency Medical Services

OakBend Medical Center
Jackson Street Hospital Campus
1705 Jackson St., Richmond
(281) 341-3000

OakBend Medical Center
10141 US Hwy 59, Wharton
(281) 344-6960

St. Christina's EMS
222 W. Burleson St., Wharton
(979) 559-2961

Employment Agencies

Workforce Solutions
1506 N. Alabama Rd., Wharton
(979) 531-0730 X2809

Engineers-Civil, Environmental, Mechanical & Consulting

Terracon
11555 Clay Rd., Houston
(713) 690-8989

Entertainment

Angel Wings Wharton
119 S. Fulton, Wharton
(979) 531-9202

Estate Services

Bohemian Rhapsody II
134 W. Milam St., Wharton
(979) 532-5577

Event Facilities

Jefferson at Peach Creek
2222 CR 129, Wharton
281-499-4855

Wharton Civic Center
1924 N. Fulton St., Wharton
(979) 532-4811 x600

The Pierce Ranch House
1232 Ranch House Rd., Pierce
(979) 559-0204

Events

James Simmons Jr. Juneteenth Committee
1709 Forrest Dr., Wharton
(979) 282-1070

Wharton County Freedom Fest, Inc.
1225 N. Alabama Rd., Wharton
(979) 532-0927

Farms & Ranches

Tractor Supply Co.
105 E. Boling HWY, Wharton

Farms & Ranches, Commercial & Residential

Central Turf
1238 CR 107, Wharton
(979) 657-1122

Foggy Hollow Ranch
5911 CR 225, East Bernard
(281) 381-4311

Hawes Company
614 E. Milam St., Wharton
(979) 532-1321

Festivals

James Simmons Jr. Juneteenth Committee
1709 Forrest Dr., Wharton
(979) 282-1070

Wharton County Freedom Fest, Inc.
1225 N. Alabama Rd., Wharton
(979) 532-0927

Wharton County Youth Fair
6036 FM 961 Rd., Wharton
(979) 677-3350

Financial & Financial Advisors

Edward Jones Investments
128 S. Houston St., Wharton
(979) 532-1282

Hollub Financial Services
727 N. Alabama RD. Suite A
Wharton, TX 77488
(979) 488-9453

Fire Departments

Hungerford Vol. Fire Dept.
P.O. Box 416, Hungerford
(979) 532-0539

Wharton Volunteer Fire Dept.
319 N. Fulton St., Wharton
(979) 532-4811 x401

Flooring

On The Square Floor Coverings
114 S. Houston St., Wharton
(979) 532-1040

Florist

Flower Shoppe
420 N. Alabama Rd., Wharton
(979) 532-8620

Flowers It Is
2521 CR 132, Wharton
(979) 533-3449

Milam Emporium
238 W. Milam St., Wharton
(979) 531-3103

Foster Care & Adoption

Houston Serenity Place Child Placement & Adoption Agcy.
303 Chimney Rock Rd. Ste 400
Houston, TX 77056
(832) 834-6152

Foundations

Mary Louise Dobson
Foundation
Wharton
(979) 282-7000

Framing

Montgomery Gallery & Frame
110 S. Houston St. , Wharton
(979) 532-3929

Funeral Homes & Memorial Parks

Gooden Hatton Funeral Home
110 N. East Ave., Wharton
(979) 532-3602

Wharton Funeral Home
515 E. Boling Highway,
Wharton
(979) 532-3410

Furniture

Mattress Discounters of Texas
228 W. Milam St., Wharton
(210) 326-3177

Glass

Roberson Air Conditioning &
Refrig., Inc.
200 E. Milam St. Wharton
(979) 532-5101

Grocery

H.E.B. Grocery Company
1616 N. Alabama Rd., Wharton
(979) 282-2773

Hall Rental

Egypt Plantation Enterprises,
LLC
P.O. Box 219, Egypt
(979) 533-0096

Hungerford Community
Center
235 Cypress, Hungerford
(979) 453-0060

The Orchard at Caney Creek
923 County Road 235, Wharton
(979) 532-5856

Wharton Knights of Columbus
2820 N. Fulton, Wharton
(979) 532-2218

Hardware

Star Parts
1119 E. Milam, Wharton
(979)532-1500

Zarsky Lumber Company, Inc.
1106 N. Richmond Rd., Wharton
(979) 532-2574

Health Centers/ Equipment

Angels Care Home Health
315 N. Alabama Road Ste. A
Wharton, TX 77488
(979) 282-2629

Beltone Hearing Care Center
241. W. Milam St., Wharton
(979) 532-8300

MEHOP
101 Ave. F, Bay City, TX
10141 HWY 59 Suite A,
Wharton
(979) 559-3550

TEXANA Center
4910 Airport Ave. Bldg. B,
Rosenberg
(281) 239-1300

Wharton Nursing &
Rehabilitation
1220 Sunny Lane, Wharton
(979) 532-5020

Heating & Air Conditioning Distributors, Eqpt & Repairs

Roberson Air Conditioning &
Refrig., Inc.
200 E. Milam St., Wharton
(979) 532-5101

Home Health

Angels Care Home Health
315 N. Alabama Road Ste. A
Wharton, TX 77488
(979) 282-2629

Senior Helpers
14090 Southwest Freeway, Ste
300, Sugarland.
(281) 316-6006

Hospice Services/ Healthcare

Altus Hospice
11352 Sugar Park Lane, Sugar
Land
(832) 526-7665

Hospitals

El Campo Memorial Hospital
303 Sandy Corner Road, El
Campo
(979) 543-6251

Memorial Hermann Sugar
Land
17500 W. Grand Parkway South
Sugar Land, TX 77479
(281) 725-5296

OakBend Medical Center
Jackson Street Hospital Campus
1705 Jackson St., Richmond
(281) 341-3000

OakBend Medical Center
Wharton, TX 77488
10141 US Hwy 59, Wharton
(281) 344-6960

Hotels/Motels

Countryside Inn
1808 FM 102, Wharton
(979) 282-8300

Holiday Inn Express & Suites
10248 HWY 59, Wharton
(979) 282-8300

Travelers Inn & Suites
1527 N. Richmond, Wharton
(979) 532-0740

Humane Society

Wharton County S.P.O.T.
P.O. Box 584, Wharton
(979) 253-3446

Insurance

Bremser Insurance Agency
211 W. Milam St. , Wharton
(979) 532-1586

Cody Sweat -
State Farm Insurance
415 E. Boling Hwy., Wharton
(979) 532-4572

Hank Hall State Farm
727 N. Alabama Rd. , Wharton
(979) 532-5151

InsuranceNet, Inc.
101 W. Caney St., Wharton
(979) 532-1011

S. Cochrane Insurance Agency -
Farmers Insurance
140 W. Milam St., Wharton
(979) 532-3885

Schulz Insurance Agency
1327 N. Alabama Rd., Wharton
(979) 532-0021

Siska Life & Health Insurance
4519 CR 155, Wharton
(979) 282-1350

Wharton County Farm Bureau
120 N. Houston St., Wharton
(979) 532-2852

Interior Decorators & Designers

Jamie Feyen Designs, LLC
3533 FM 1299 Rd., Wharton
(979) 533-8920

Investment Counselors

Edward Jones Investments
128 S. Houston St., Wharton
(979) 532-1282

Hollub Financial Services
727 N. Alabama Rd. Suite A,
Wharton
(979) 488-9453

K-Mana, Inc.
P.O. Box 588, Wharton
(979) 282-7000

Jewelers

Tyler's Jewelry & Pawn
2310 N. Richmond Rd., Wharton
(979) 532-0971

Landscape Architects, Contractors & Designers

El Campo Spraying Inc.
2601 N. Mechanic St., El
Campo
(979) 543-7811

Lawn & Garden Services

El Campo Spraying Inc.
2601 N. Mechanic St., El Campo
(979) 543-7811

Liquor Stores

Louie's Package Store
2005 Hwy. 60 South, Wharton
(979) 532-2378

Lodging

Countryside Inn
1808 FM 102, Wharton
(979) 532-1152

Holiday Inn Express Hotel &
Suites
10247 Hwy. 59, Wharton
(979) 282-8300

Motel 6
9985 US 59 Rd., Wharton
(979) 532-0301

The Pierce Ranch House
1232 Ranch House Road, Pierce
(979) 559-0204

Lumber

Zarsky Lumber Company, Inc.
1106 N. Richmond Rd.,
Wharton
(979) 532-2574

Machine Shops

Koenig Welding Service, Inc.
2305 N. Richmond Rd.,
Wharton
(979) 532-4161

Mailing Services

Pamela Printing Company
505 Julie Rivers Drive Suite 310
Sugar Land, TX 77478
(281) 240-1313

Manufacturing/Manufacturers Representatives

Dorian Tool International, Inc.
615 CR 219, East Bernard
(979) 282-2861

Drawworks, L.P.
10555 FM 1301, Boling
(979) 657-1216

J-M Manufacturing
10807 US 59 Rd., Wharton
(979) 532-5640

Lamberti USA, Inc.
PO Box 1000, Hungerford
(281) 342-5675

Prime Eco Group, Inc.
2933 S. State Hwy. 60, Wharton
(979) 531-1100

Marketing Research & Marketing Companies

Kapeesh Marketing, LLC
414 Blanche St., Wharton
(713) 570-6603

Massage Therapy

Healthy Touch Knead to Relax
110 S. Resident St., Wharton
(979) 282-8881

Meat Markets

H.E.B. Grocery Company
1616 N. Alabama Rd., Wharton
(979) 282-2773

Jr.'s Texas Best Smokehouse
164 CR 467, Wharton
(979) 531-0888

Vincek's Smokehouse
139 S. Dill, East Bernard
(979) 335-7921

Medical Laboratory

Clinical Pathology Laboratories,
Inc.
10141 US HWY 59 Rd.
(979) 488-4917

Mortgage Services

Hancock Mortgage Partners
1605 7th St., Bay City
(979) 824-6761

Motorcycle Dealers

El Campo Cycle Center
28268 US Highway 59, El
Campo
(979) 543-8442

Museums

20th Century Technology
Museum
3615 N. Richmond Rd.,
Wharton
(979) 282-8810

Egypt Plantation Enterprises,
LLC
11914 FM 102, Egypt
(979) 533-0096

Wharton County Historical
Museum
3615 N. Richmond Rd.,
Wharton
(979) 532-2600

Newspapers

Wharton Journal-Spectator
115 W. Burleson St., Wharton
(979) 532-8840

Nursing Homes

Caney Creek Nursing & Rehab
1405 Valhalla Dr., Wharton
(979) 532-1244

Elmcroft
1930 Briar Ln., Wharton
(979) 532-5800

Wharton Nursing & Rehabilitation
1220 Sunny Ln., Wharton
(979) 532-5020

Oil Distributors

South Texas Oil & Distributing
409 W. Loop St., El Campo
(979) 543-1791

Optical Shop

Lifestyle Vision
10119 US Hwy. 59 South,
Wharto
(979) 488-2781

Optical, Optometrists, Opticians & Optical Labs

Berkeley Eye Center-Wharton
1120 N. Fulton St., Wharton
(979) 532-0805

Exceptional Eye Care
202 E. Boling Hwy., Wharton
(979) 532-4500

Wharton Eye Associates P.A.
10119 US Hwy 59 South #4
Wharton, TX 77488
(979) 533-7337

Organizations

100 Club of Wharton County
P.O. Box 46, El Campo
(979) 543-1040

Boys & Girls Club of Wharton
2120 N. Newton, Wharton
(979) 282-9660

Caney Creek Cons. Foundation
1416 Barfield Rd., Wharton
(979) 533-2447

East Wharton County Crime
Stoppers
P.O. Box 145, Wharton
(979) 533-3262

Edwards Ministerial Assoc., Inc.
8003 Manassas Dr., Austin
(210) 274-5841

Fraternal Order of Eagles #4507
P.O. Box 386, Wharton
(979) 533-2835

Friends of Wharton, Texas Animal
Control
Wharton
(979) 533-2081

Habitat for Humanity East Wharton
County
P.O. Box 451, Wharton
(979) 532-4850

Hospice Support, Inc.
1102 N. Mechanic St., El
Campo
(979) 578-0314

Hungerford Community Center
235 Cypress, Hungerford
(979) 453-0060

James Simmons Jr. Juneteenth
1709 Forrest Dr., Wharton
(979) 282-1070

Just Do It Now, Inc.
1619 Martin Luther King Blvd.
Wharton, TX 77488
(979) 531-1975

Pilot Club of Wharton
P.O. Box 963, Wharton

Rotary Club of Wharton
P.O. Box 303, Wharton
(979) 532-2636

StraightWay, Inc.
FM 1161 W., Hungerford
(979) 532-5613

Team Wharton, Inc.
P.O. Box 588, Wharton
(979) 282-7000

United Way
2417 Avenue G, Bay City
(979) 245-5852

Wharton Babe Ruth Baseball, Inc.
Old Boling Hwy. (Tiger Park)

Wharton, TX 77488
(979) 533-0148

Wharton Citizens Police Acad-
emy Alumni Assoc.
P.O. Box 127, Wharton
(979) 453-0990

Wharton County Freedom Fest,
Inc.
1225 N. Alabama Rd., Whar-
ton
(979) 532-0927

Wharton County Interfaith Coali-
tion Inc. dba SHARE
229 W. Milam St.
P.O. Box 101, Wharton
(979) 282-2021

Wharton County Recovery
Team
P.O. Box 641, Wharton
(979) 531-3170

Wharton County Youth Fair
6036 FM 961 Rd, Wharton
(979) 677-3350

Wharton Garden Club
P.O. Box 397, Boling

Wharton Knights of Columbus
2820 N. Fulton St., Wharton
(979) 532-2218

Wharton Lions Club
P.O. Box 106, Wharton
(979) 532-4532

Wharton Little League
P.O. Box 1106, Wharton
(979) 533-1323

Wharton Training High School
& Ex-Students Association
PO Box 1131, Wharton
(979) 532-0916

Pawn Shops

Tyler's Jewelry & Pawn
2310 N. Richmond Road,
Wharton
(979) 532-0971

Pecans

Bagley Pecan House
902 N. Richmond Rd., Wharton
(979) 532-4020

Pest Control Services

Bricker Pest Control
875 Nichols Ave., Bay City,
(979) 244-5811

BUGABUG

1117 Tobola, Rosenberg
(281) 344-8266

Photographers

Sharon Joines Photographs
822 Caney Trail Dr., Wharton
(979) 532-2636

Kristy Quijas Photography
1242 CR 231, Wharton
(979) 533-9404

Physicians & Surgeons

Memorial Hermann Medical
Group
2100 Regional Medical Dr.
Wharton, TX 77488
(979) 532-1700

Plastic Molding

Nan Ya Plastics Corporation.
USA
2081 FM 102 Rd., Wharton
(281) 727-7300

Plumbing

Mason's Plumbing Co.
213 N. Richmond Rd., Wharton
(832) 888-5500

Rath Plumbing
216 N. Richmond Rd., Wharton
(979) 532-0223

Portable Toilets

ALLStar
4828 South State Highway 71
El Campo, TX 77437
(979) 543-1500

Printers, Publishers, Type-setters & Graphics

J & M Printing
813 E. Alabama St., Wharton
(979) 532-5240

Radio Stations

Wharton County Radio-KULP
515 E. Jackson St, El Campo
(979) 542-3303

Real Estate

C.E. Muegge Real Estate
213 N. Richmond Rd., Wharton
(979) 532-5252

The Ron Brown Company
2618 N. Richmond Rd.,
Wharton
(979) 532-1013

Hudgins Groover Real Estate
2103 N. Richmond Rd.,
Wharton
(979) 532-0007

R.C. Harrison, Jr., Realtors
108 Santa Fe
Wharton, TX 77488
(979) 532-8000

Wied Realty
1506 N. Alabama Suite B, Wharton
(979) 532-0334

Real Estate Appraisers

Gary Ward Appraisal Services
1120 Linwood, Wharton
(979) 531-8190

Hudgins-Groover Real Estate
13403 TX-36., Needville, TX
77461
(979) 793-4100

R.C. Harrison, Jr., Realtors
108 Santa Fe, Wharton
(979) 532-8000

Real Estate Developers & Investors

Wharton Industrial Foundation
1610 North Alabama, Wharton
(979) 532-2631

Real Estate-Commercial & Residential

Century 21 Olympian-Wharton
702 N. Richmond Td. Suite G
Wharton, TX 77488
(979) 332-0753

RE/MAX Professionals
1707 West Loop, El Campo
(979) 543-7006

Recreation

Plaza Theatre
120 S. Houston St., Wharton
(979) 282-2226

Showplace 3 Cinema, Inc.
820 W. Loop, El Campo
(979) 543-8182

Restaurants

9ers Grill
112 W Boling Hwy, Wharton8
(979) 532-2025

Grand Buffet
125 E. Boling Hwy., Wharton
(979) 531-1998

Hinze's Country Kitchen
1512 E. Milam St., Wharton
(979) 532-1799

Hinze's Bar-B-Que
1917 N. Richmond Rd.,
Wharton
(979) 532-2710

Jr.'s Texas Best Smokehouse
164 CR 467, Wharton
(979) 531-0888

McDonald's
1404 Richmond Rd., Wharton
(979) 532-8884

Pizza Hut
2302 N. Richmond Rd.,
Wharton
(979) 532-1692

Prasek's Hillje Smokehouse, Inc.
29714 US 59 Hwy., El Campo
(979) 543-8312

Reyna's Cafe
7902 US 59, Hungerford
(979) 531-0880

Sonic Drive In-Wharton
217 N. Richmond Rd., Wharton
(979) 532-1611

Vincek's Smokehouse
139 S. Dill, East Barnard
(979) 335-7921

Whataburger
10319 US 59, Wharton
(979) 532-1208

Zapata's Mex Bar & Grill
1406 N. Richmond, Wharton
(979) 531-3014

Roofing

Priority Roofing and Construction
2030 Ranchero Dr., East

Bernard
(979) 559-7281
Houser Roofing
201 2nd St., Sealy
(979) 472-9176

Weather Guard Roofing
708 E. Milam St., Wharton
(979) 532-0928

RV Parks

RV Village-Wharton LLC
2601 N. Richmond Rd.,
Wharton
(713) 690-0791

Schools, Colleges & Education

Faith Christian Academy of
Wharton
5227 FM 1301, Wharton
(979) 531-1000

Taps & Mats Dance Studio
1109 N. Fulton St., Wharton
(979) 532-0602

Wharton County Junior College
911 E. Boling Hwy., Wharton
(979) 532-4560

Wharton I.S.D.
2100 N. Fulton St., Wharton
(979) 532-6201

Septic System Pumping

ALLStar
4828 South State Hwy. 71
El Campo, TX 77437
(979) 543-1500

Signs

Custom Creations
202 N. Houston St., Wharton
(979) 531-0000

Social Service Agencies

1-Absolute Care HCS
1330 North Richmond Rd.
Wharton, TX 77488
(979) 677-3511

Crisis Center
Wharton 116 E. Burleson
3010 6th St., Bay City
(979) 245-9109

Hospice Support, Inc.
1102 N. Mechanic St., El
Campo
(979) 578-0314

Just Do It Now, Inc.
1619 Martin Luther King Blvd.

Wharton, TX 77488
(979) 531-1975
TEXANA Center
4910 Airport Ave. Bldg. B
Rosenberg, TX 77471-5759
(281) 239-1300

Stocks & Bonds Brokers

Edward Jones Investments
128 S. Houston St., Wharton
(979) 532-1282

K-Mana, Inc.
PO Box 588, Wharton
(979) 282-7000

Storage Facilities - Rentals

City Wide Storage
808 N. Richmond Rd., Wharton
(979) 532-3823

General Sales Company
808 N. Richmond Rd., Wharton
(979) 532-3823

MFS Storage, Inc. East Bernard
9031 Hwy. 60 & Hwy. 90 108
Old Wharton Rd., Wharton
(979) 532-2451

My Storehouse Mini Storage
P.O. Box 827
1827 Stadium Rd., Wharton
(979) 532-4422

Substance Abuse Treatment Facility

Bay Area Council on Drugs &
Alcohol
2911 South Shore Blvd., STE 150
League City, TX 77573
(800) 510-3111

Surveyors

Robert Kolacny & Assoc. LLC
140 S. Houston St.
Wharton, TX 77488
(979) 532-8056

Television-Cable

Cable One
1302 Wisteria Way, Wharton
(979) 532-3920

Theaters

Plaza Theatre
120 S. Houston, Wharton
(979) 282-2226

Showplace 3 Cinema, Inc.
820 W. Loop, El Campo

(979) 543-8182

Tire Dealers

Kross Wholesale Tire Co.
102 CR 140 at Hwy. 60,
Wharton
(979) 532-4800

Title Companies

Mid-Coast Title Company
111 N. Fulton St., Wharton
(979) 532-1512

Trophies & Plaques

Custom Creations
202 N. Houston St., Wharton
(979) 531-0000

Turfgrass / Farming

Central Turf
1238 CR 107, Wharton
(979) 657-1122

Utilities

CenterPoint Energy Houston
4011 Ave. H
Rosenberg, TX 77471
(281) 561-3202

Exelon Colorado Bend Power Plant
3863 South State Hwy. 60
Wharton, TX 77488
(979) 358-3027

Wharton County Electric
Cooperative
1815 East Jackson St., El
Campo
(979) 543-6271

Wharton County Generation
New Gulf Power Plant
206 Vat Rd., Boling, TX 77420
(979) 657-0343 x 102

Veterinarians

Alamont Veterinary Clinic
1907 E. Boling Hwy., Wharton
(979) 532-5569

Wharton Veterinary Clinic
1518 Hwy. 60 South, Wharton
(979) 532-1431

Western Wear

TNT Western Wear Inc.
3030 N. Richmond Rd.,
Wharton
(979) 531-8623

**Wheelchair Manufacturer
& Repairs**

Box Wheelchairs
918 Pecan Valley Dr., Wharton
(951) 283-2977

Window Replacement

Replacement Windows of Katy
2900 Katy Hockley Cutoff Rd.
C 305
(281) 392-5353

Woodworking

Metcalfe Design Co.
210 W Mulberry, Wharton
*Why become a member of
the Chamber of Commerce?*

The Wharton Chamber of Commerce connects businesses with customers. We are the go-to place. The Wharton Chamber of Commerce gives great references.

The Wharton Chamber of Commerce supports the businesses who employ the people who are your customers.

The Wharton Chamber of Commerce helps promote your business. We offer affordable advertising rates on whartontexas.com and our weekly email newsletter. New members get discounts on advertisements in the Wharton Journal-Spectator.

The Wharton Chamber of Commerce helps solve business problems. You don't have the time to lobby. We do. We fight for less red tape and lower business taxes.

The Wharton Chamber of Commerce enhances business activity through the tourism and convention department, as well as collaboration with the City of Wharton, Wharton Economic Development Corp. and other organizations.



WHARTON
Chamber of Commerce

The Wharton Chamber of Commerce & Agriculture is a non-profit corporation in the business of helping businesses do business.

With some 310 members, the chamber has a wide spectrum of members with numerous products and services that are used locally, in our nation, nation and globe.

The chamber, in addition to helping members, spends considerable effort promoting our town to visitors.

Chamber's Mission Statement

The Wharton Chamber of Commerce & Agriculture is an advocate for the prosperity of Wharton, making it a better place to live, work, learn, visit and do business.

The chamber office is located at 225 N. Richmond Road, Wharton, TX 77488. Business hours are weekdays from 9 a.m. to 5 p.m. You can contact the chamber during these hours at 979-532-1862 or by emailing helpdesk@whartonchamber.com.

Wharton Journal Spectator

Your local and county wide news, delivered twice a week!

Call today to subscribe!

979-532-8840



Or, visit us online at
www.journal-spectator.com

115 W. Burleson St.
P.O. Box 111
Wharton, TX 77488



HEALTHY HOME

A healthy home begins with the air
you breathe, pure and simple.



Trusted Solutions to Control Your Home.



TEMPERATURE



AIR PURITY



HUMIDITY



VENTILATION

Roberson
AIR CONDITIONING

Aprilaire®

Call ❄️ Text 979-532-5101 ❄️ RobersonAC.com