

PUBLIC NOTICES

CAMBRIDGE DRINKING WATER REPORT

CITY OF CAMBRIDGE CONSUMER CONFIDENCE REPORT

Cambridge 2021 Drinking Water Report Making Safe Drinking Water

Your drinking water comes from a groundwater source: three wells ranging from 410 to 427 feet deep, that draw water from the Mt. Simon aquifer.

Cambridge works hard to provide you with safe and reliable drinking water that meets federal and state water quality requirements. The purpose of this report is to provide you with information on your drinking water and how to protect our precious water resources.

Contact Todd Schwab, Director of Public Works, at 763-689-1800 or tschwab@ci.cambridge.mn.us if you have questions about Cambridge's drinking water. You can also ask for information about how you can take part in decisions that may affect water quality.

The U.S. Environmental Protection Agency sets safe drinking water standards. These standards limit the amounts of specific contaminants allowed in drinking water. This ensures that tap water is safe to drink for most people. The U.S. Food and Drug Administration regulates the amount of certain contaminants in bottled water. Bottled water must provide the same public health protection as public tap water.

Drinking water, including bottled water, may reasonably be expected to contain at least small amounts of some contaminants. The presence of contaminants does not necessarily indicate that water poses a health risk. More information about contaminants and potential health effects can be obtained by calling the Environmental Protection Agency's Safe Drinking Water Hotline at 1-800-426-4791.

Cambridge Monitoring Results

This report contains our monitoring results from January 1 to December 31, 2021.

We work with the Minnesota Department of Health to test drinking water for more than 100 contaminants. It is not unusual to detect contaminants in small amounts. No water supply is ever completely free of contaminants. Drinking water standards protect Minnesotans from substances that may be harmful to their health.

Learn more by visiting the Minnesota Department of Health's webpage Basics of Monitoring and Testing of Drinking Water in Minnesota (<https://www.health.state.mn.us/communities/environment/water/factsheet/sampling.html>).

How to Read the Water Quality Data Tables

The tables below show the contaminants we found last year or the most recent time we sampled for that contaminant. They also show the levels of those contaminants and the Environmental Protection Agency's limits. Substances that we tested for but did not find are not included in the tables.

We sample for some contaminants less than once a year because their levels in water are not expected to change from year to year. If we found any of these contaminants the last time we sampled for them, we included them in the tables below with the detection date.

We may have done additional monitoring for contaminants that are not included in the Safe Drinking Water Act. To request a copy of these results, call the Minnesota Department of Health at 651-201-4700 or 1-800-818-9318 between 8:00 a.m. and 4:30 p.m., Monday through Friday.

Some contaminants are monitored regularly throughout the year, and rolling (or moving) annual averages are used to manage compliance. Because of this averaging, there are times where the Range of Detected Test Results for the calendar year is lower than the Highest Average or Highest Single Test Result, because it occurred in the previous calendar year.

Definitions

- **AL (Action Level):** The concentration of a contaminant which, if exceeded, triggers treatment or other requirements which a water system must follow.

- **EPA:** Environmental Protection Agency

- **MCL (Maximum contaminant level):** The highest level of a contaminant that is allowed in drinking water. MCLs are set as close to the MCLGs as feasible using the best available treatment technology.

- **MCLG (Maximum contaminant level goal):** The level of a contaminant in drinking water below which there is no known or expected risk to health. MCLGs allow for a margin of safety.

- **MRDL (Maximum residual disinfectant level):** The highest level of a disinfectant allowed in drinking water. There is convincing evidence that addition of a disinfectant is necessary for control of microbial contaminants.

- **MRDLG (Maximum residual disinfectant level goal):** The level of a drinking water disinfectant below which there is no known or expected risk to health. MRDLGs do not reflect the benefits of the use of disinfectants to control microbial contaminants.

- **N/A (Not applicable):** Does not apply.

- **pCi/l (picocuries per liter):** A measure of radioactivity.

- **ppb (parts per billion):** One part per billion in water is like one drop in one billion drops of water, or about one drop in a swimming pool. ppb is the same as micrograms per liter ($\mu\text{g/l}$).

- **ppm (parts per million):** One part per million is like one drop in one million drops of water, or about one cup in a swimming pool. ppm is the same as milligrams per liter (mg/l).

- **PWSID:** Public water system identification.

Monitoring Results – Regulated Substances

LEAD AND COPPER – Tested at customer taps.						
Contaminant (Date, if sampled in previous year)	EPA's Ideal Goal (MCLG)	EPA's Action Level	90% of Results Were Less Than	Number of Homes with High Levels	Violation	Typical Sources
Lead (09/07/17)	0 ppb	90% of homes less than 15 ppb	6.5 ppb	0 out of 20	NO	Corrosion of household plumbing.
Copper (09/07/17)	0 ppm	90% of homes less than 1.3 ppm	0.21 ppm	0 out of 20	NO	Corrosion of household plumbing.

INORGANIC & ORGANIC CONTAMINANTS – Tested in drinking water.						
Contaminant (Date, if sampled in previous year)	EPA's Ideal Goal (MCLG)	EPA's Limit (MCL)	Highest Average or Highest Single Test Result	Range of Detected Test Results	Violation	Typical Sources
Nitrate	10 ppm	10.4 ppm	8.2 ppm	0.00-8.20	NO	Discharge of drilling wastes; Discharge from metal refineries; Erosion of natural deposit.
Gross Alpha	0 pCi/l	15.4 pCi/l	5.7 pCi/l	N/A	NO	Erosion of natural deposits.
Combined Radium	0 pCi/l	5.4 pCi/l	4.2 pCi/l	N/A	NO	Erosion of natural deposits

Potential Health Effects and Corrective Actions (If Applicable)

Nitrate: Nitrate in drinking water at levels above 10 parts per million is a health risk for infants of less than six months of age. High nitrate levels in drinking water can cause blue baby syndrome. Nitrate levels may rise quickly for short periods of time because of rainfall or agricultural activity. If you are caring for an infant, you should ask advice from your health care provider.

CONTAMINANTS RELATED TO DISINFECTION – Tested in drinking water.						
Substance (Date, if sampled in previous year)	EPA's Ideal Goal (MCLG or MRDLG)	EPA's Limit (MCL or MRDL)	Highest Average or Highest Single Test Result	Range of Detected Test Results	Violation	Typical Sources
Total Trihalomethanes (TTHMs)	N/A	80 ppb	19.1 ppb	N/A	NO	By-product of drinking water disinfection.
Total Haloacetic Acids (HAA)	N/A	60 ppb	5.5 ppb	N/A	NO	By-product of drinking water disinfection.

CONTAMINANTS RELATED TO DISINFECTION – Tested in drinking water.						
Substance (Date, if sampled in previous year)	EPA's Ideal Goal (MCLG or MRDLG)	EPA's Limit (MCL or MRDL)	Highest Average or Highest Single Test Result	Range of Detected Test Results	Violation	Typical Sources
Total Chlorine	4.0 ppm	4.0 ppm	0.56 ppm	0.23 - 0.72 ppm	NO	Water additive used to control microbes.

Total HAA refers to HAA5

OTHER SUBSTANCES – Tested in drinking water.						
Substance (Date, if sampled in previous year)	EPA's Ideal Goal (MCLG)	EPA's Limit (MCL)	Highest Average or Highest Single Test Result	Range of Detected Test Results	Violation	Typical Sources
Fluoride	4.0 ppm	4.0 ppm	0.7 ppm	0.68 - 0.73 ppm	NO	Erosion of natural deposits; Water additive to promote strong teeth.

Potential Health Effects and Corrective Actions (If Applicable)

Fluoride: Fluoride is nature's cavity fighter, with small amounts present naturally in many drinking water sources. There is an overwhelming weight of credible, peer-reviewed, scientific evidence that fluoridation reduces tooth decay and cavities in children and adults, even when there is availability of fluoride from other sources, such as fluoride toothpaste and mouth rinses. Since studies show that optimal fluoride levels in drinking water benefit public health, municipal community water systems adjust the level of fluoride in the water to an optimal concentration between 0.5 to 0.9 parts per million (ppm) to protect your teeth. Fluoride levels below 2.0 ppm are not expected to increase the risk of a cosmetic condition known as enamel fluorosis.

Some People Are More Vulnerable to Contaminants in Drinking Water

Some people may be more vulnerable to contaminants in drinking water than the general population. Immunocompromised persons such as persons with cancer undergoing chemotherapy, persons who have undergone organ transplants, people with HIV/AIDS or other immune system disorders, some elderly, and infants can be particularly at risk from infections. The developing fetus and therefore pregnant women may also be more vulnerable to contaminants in drinking water. These people or their caregivers should seek advice about drinking water from their health care providers. EPA/Centers for Disease Control (CDC) guidelines on appropriate means to lessen the risk of infection by Cryptosporidium and other microbial contaminants are available from the Safe Drinking Water Hotline at 1-800-426-4791.

Learn More about Your Drinking Water

Drinking Water Sources

Minnesota's primary drinking water sources are groundwater and surface water. Groundwater is the water found in aquifers beneath the surface of the land. Groundwater supplies 75 percent of Minnesota's drinking water. Surface water is the water in lakes, rivers, and streams above the surface of the land. Surface water supplies 25 percent of Minnesota's drinking water.

Contaminants can get in drinking water sources from the natural environment and from people's daily activities. There are five main types of contaminants in drinking water sources.

Contaminants can get in drinking water sources from the natural environment and from people's daily activities. There are five main types of contaminants in drinking water sources.

- **Microbial contaminants**, such as viruses, bacteria, and parasites. Sources include sewage treatment plants, septic systems, agricultural livestock operations, pets, and wildlife.

- **Inorganic contaminants** include salts and metals from natural sources (e.g. rock and soil), oil and gas production, mining and farming operations, urban stormwater runoff, and wastewater discharges.

- **Pesticides and herbicides** are chemicals used to reduce or kill unwanted plants and pests. Sources include agriculture, urban stormwater runoff, and commercial and residential properties.

- **Organic chemical contaminants** include synthetic and volatile organic compounds. Sources include industrial processes and petroleum production, gas stations, urban stormwater runoff, and septic systems.

- **Radioactive contaminants** such as radium, thorium, and uranium isotopes come from natural sources (e.g. radon gas from soils and rock), mining operations, and oil and gas production.

The Minnesota Department of Health provides information about your drinking water source(s) in a source water assessment, including:

- How Cambridge is protecting your drinking water source(s);
- Nearby threats to your drinking water sources;
- How easily water and pollution can move from the surface of the land into drinking water sources, based on natural geology and the way wells are constructed.

Find your source water assessment at Source Water Assessments (<https://www.health.state.mn.us/communities/environment/water/swp/swa>) or call 651-201-4700 between 8:00 a.m. and 4:30 p.m., Monday through Friday.

Lead in Drinking Water

You may be in contact with lead through paint, water, dust, soil, food, hobbies, or your job. Coming in contact with lead can cause serious health problems for everyone. There is no safe level of lead. Babies, children under six years, and pregnant women are at the highest risk.

Lead is rarely in a drinking water source, but it can get in your drinking water as it passes through lead service lines and your household plumbing system. Isanti is responsible for providing high quality drinking water, but it cannot control the plumbing materials used in private buildings.

Read below to learn how you can protect yourself from lead in drinking water.

1. **Let the water run** for 30-60 seconds before using it for drinking or cooking if the water has not been turned on in over six hours. If you have a lead service line, you may need to let the water run longer. A service line is the underground pipe that brings water from the main water pipe under the street to your home.

- You can find out if you have a lead service line by contacting your public water system, or you can check by following the steps at: <https://www.mprnews.org/story/2016/06/24/npr-find-lead-pipes-in-your-home>

- The only way to know if lead has been reduced by letting it run is to check with a test. If letting the water run does not reduce lead, consider other options to reduce your exposure.

2. **Use cold water** for drinking, making food, and making baby formula. Hot water releases more lead from pipes than cold water.

3. **Test your water.** In most cases, letting the water run and using cold water for drinking and cooking should keep lead levels low in your drinking water. If you are still concerned about lead, arrange with a laboratory to test your tap water. Testing your water is important if young children or pregnant women drink your tap water.

- Contact a Minnesota Department of Health accredited laboratory to get a sample container and instructions on how to submit a sample: Environmental Laboratory Accreditation Program (<https://eldo.web.health.state.mn.us/public/accreditedlabs/labsearch.seam>)

The Minnesota Department of Health can help you understand your test results.

4. **Treat your water** if a test shows your water has high levels of lead after you let the water run.

- Read about water treatment units: Point-of-Use Water Treatment Units for Lead Reduction (<https://www.health.state.mn.us/communities/environment/water/factsheet/poulead.html>)

Learn more:
- Visit Lead in Drinking Water (<https://www.health.state.mn.us/communities/environment/water/contaminants/lead.html>)

- Visit Basic Information about Lead in Drinking Water (<http://www.epa.gov/safewater/lead>)

- Call the EPA Safe Drinking Water Hotline at 1-800-426-4791. To learn about how to reduce your contact with lead from sources other than your drinking water, visit Lead Poisoning Prevention: Common Sources (<https://www.health.state.mn.us/communities/environment/lead/sources.html>).

Help Protect Our Most Precious Resource – Water Conservation

Conservation is essential, even in the land of 10,000 lakes. For example, in parts of the metropolitan area, groundwater is being used faster than it can be replaced. Some agricultural regions in Minnesota are vulnerable to drought, which can affect crop yields and municipal water supplies.

We must use our water wisely. Below are some tips to help you and your family conserve – and save money in the process.

Fix running toilets—they can waste hundreds of gallons of water.

Turn off the tap while shaving or brushing your teeth.

Shower instead of bathe. Bathing uses more water than showering, on average.

Only run full loads of laundry, and set the washing machine to the correct water level.

Only run the dishwasher when it's full.

Use water-efficient appliances (look for the WaterSense label).

Use water-friendly landscaping, such as native plants.

FROM PUBLIC NOTICES, PAGE 20

When you do water your yard, water slowly, deeply, and less frequently. Water early in the morning and close to the ground.

Learn more Minnesota Pollution Control Agency's Conserving Water webpage (https://www.pca.state.mn.us/living-green/conserving-water)

U.S. Environmental Protection Agency's WaterSense webpage (https://www.epa.gov/watersense) You Can Prevent Pollution

Many of our daily activities contribute to the pollution of Minnesota's surface water and groundwater. You can help protect these drinking water sources by taking the following actions:

Lawn and property: Limit use of herbicides, pesticides, and fertilizers on your property. Keep soil in place with plants, grass, or rocks.

Cover temporary piles of dirt with a tarp or burlap sack. Keep leaves and grass off of streets and sidewalks.

Maintain any septic systems, private wells, and storage tanks to prevent leaks. Seal any unused wells.

Out-of-date medications: Never flush unwanted or out-of-date medications down the toilet or sink. Always take them to a waste disposal or prescription medication drop-off site. More information is available at Managing unwanted medications (www.pca.state.mn.us/living-green/managing-unwanted-medications)

Hazardous materials: Safety store hazardous materials such as paint, batteries, herbicides, pesticides, and pool chemicals. Dispose of them at a proper waste disposal facility or drop-off event. Do not dump down storm drains, sink or onto your land. Learn more at: Keep hazardous waste out of the garbage (http://www.pca.state.mn.us/featured/keep-hazardous-waste-out-garbage).

Pet waste: Pick up after your pet and put waste in the trash.

Trash: Seal trash bags and keep litter out of the street.

Winter ice removal: Chemicals used to break up the ice are called deicers or anti-icers. They can be harmful to the environment, corrosive to driveways and sidewalks and harmful to plants, pets and humans. Always shovel first, and then only apply deicers/anti-icers lightly if needed. Learn more at 10 smart salting tips to protect Minnesota waters (https://www.pca.state.mn.us/featured/10-smart-salting-tips-protect-minnesota-waters).

Keep an eye out for car and motor fluids: Seal or repair any fluid leaks that could run off onto streets and into storm drains. Take used motor oil or other fluids to a neighborhood drop-off site.

Be a water advocate: Spread the word; get involved. There are many groups and individuals working to protect water across Minnesota.

This report is not being directly mailed to all customers but a copy is available upon request.

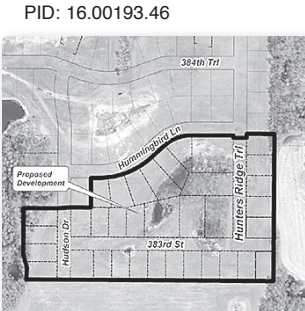
www.ci.cambridge.mn.us
Published in the Isanti-Chisago County STAR on June 9, 2022

PUBLIC HEARING

NORTH BRANCH PLANNING COMMISSION PUBLIC HEARING NOTICE

NOTICE IS HEREBY GIVEN that the North Branch Planning Commission will hold a Meeting for a PUBLIC HEARING on Monday June 20, 2022, 2020 at 6:00 p.m. or as soon thereafter as the matter may be heard, at the North Branch City Hall, 6408 Elm Street, North Branch, Minnesota. The purpose of this public hearing is to allow the public to give testimony regarding a request to approve a Preliminary Plat and Conditional Use Permit (Planned Unit Development) to be called "Lucht's Crossing 4th Addition" creating approximately 37 lots and 1 outlet. The hearing shall continue until all evidence and testimony have been received.

Applicant: Graphic Homes, Inc
Property Owners: Graphic Homes, Inc
Parcel ID: PID: 16.00193.46



Legal Description: Outlot A, Lucht's Crossing 3rd Addition, Chisago County, Minnesota.

Pertinent information about this request is on file at City Hall. Interested parties are encouraged to submit written or oral comments on this matter at or before the Public Hearing.

For the Planning Agency
Renaef Fry, City Administrator
renaef@ci.north-branch.mn.us
651.674.8113

Published in the Isanti-Chisago County STAR on June 9, 2022

NORTH BRANCH COUNCIL PUBLIC HEARING NOTICE

NOTICE IS HEREBY GIVEN that the North Branch Council will hold a public hearing on Tuesday, June 28, 2022 at 7 p.m. or as soon thereafter as the matter may be heard, at the North Branch City Hall, 6408 Elm Street, North Branch, Minnesota. The purpose of this public hearing is to allow the public to give testimony regarding the new tobacco ordinance and repeal Article V (18-126 through 18-135) and replace. Pertinent information about this request is on file at City Hall. Interested parties are encouraged to submit written or oral comments on this matter at or before the Public Hearing.

For the Council
Ragini Varma, City Clerk/IT Director
raginiv@ci.north-branch.mn.us
651.674.8113

Published in the Isanti-Chisago County STAR on June 9, 2022

NORTH BRANCH COUNCIL PUBLIC HEARING NOTICE

NOTICE IS HEREBY GIVEN that the North Branch Council will hold a public hearing on Tuesday, June 28, 2022 at 7 p.m. or as soon thereafter as the matter may be heard, at the North Branch City Hall, 6408 Elm Street, North Branch, Minnesota. The purpose of this public hearing is to allow the public to give testimony regarding the new addition of ATV ordinance to our current Chapter 62 - vehicles and traffic and add ARTICLE V. Pertinent information about this request is on file at City Hall. Interested parties are encouraged to submit written or oral comments on this matter at or before the Public Hearing.

For the Council
Ragini Varma, City Clerk/IT Director
raginiv@ci.north-branch.mn.us
651.674.8113

Published in the Isanti-Chisago County STAR on June 9, 2022

CITY OF NORTH BRANCH NOTICE OF PUBLIC HEARING FOR DECLARATION OF PUBLIC NUISANCE MAJOR ABATEMENT

NOTICE IS HEREBY GIVEN that the North Branch City Council will hold a meeting for a PUBLIC HEARING on Tuesday, June 28, 2022 at 7:00 p.m. or as soon thereafter as the matter may be heard, at the North Branch City Hall, 6408 Elm Street, North Branch, Minnesota. The purpose of this public hearing is to allow the public to give testimony regarding declaring the code violations at the property at 38555 9th Ave as a major abatement public nuisance, within Chapter 30 (Environment) of the City Code.

Pertinent information about this request is on file at City Hall. Interested parties are encouraged to submit written or oral comments on this matter at or before the Public Hearing.

Nate Sondrol, GIS/Parks Director, nathans@ci.north-branch.mn.us, 651.674.8113

Published in the Isanti-Chisago County STAR on June 9, 2022

CITY OF ISANTI PLANNING COMMISSION PUBLIC HEARING ON JUNE 21, 2022

Notice is hereby given that on **Tuesday, June 21, 2022, at 7:00 p.m. or shortly thereafter following the City Council Meeting, at the Isanti City Hall located at 110 First Avenue NW;** the Planning Commission will hold a Public Hearing on the following items:

1. Request by RK Unlimited Properties, LLC for Site Plan Approval under City Ordinance 445, Section 18, said request is for a manufacturing facility located in the I-1 Industrial Park District at 605 E Dual Blvd NE for Unlimited Welding.
2. Request by State Storage Shafer, LLC for approval of a Conditional Use Permit under City Ordinance 445, Section 21, Article 2 and Site Plan approval under City Ordinance 445, Section 18, said request is for a Self-Storage Facility located in the I-1 Industrial Park District at 501 W Dual Blvd NE.

BY ORDER OF THE CITY OF ISANTI, MINNESOTA.
Stephanie Hillesheim
Community Development Director
Published in the Isanti-Chisago County STAR on June 9, 2022

NOTICES

CAMBRIDGE-ISANTI SCHOOL DISTRICT DESTRUCTION OF SPECIAL EDUCATION RECORDS

According to the Individuals with Disabilities Education Act (IDEA), 34CFR300.573, school districts must notify parents when the information contained in their child's special education record is no longer needed to provide public educational services to the child. This is public notification to parents or eligible students (students who are of legal age except where guardianship or conservatorship has been established) of the District's intent to destroy all special education records, except for archival information such as name, grades, attendance records, classes attended, grades completed and number of years completed for its own records based upon federal law, for those students ages 24 and older at the end of the 2021-22 school year.

Published in the Isanti-Chisago County STAR on June 2, 9, 2022

STATE OF MINNESOTA DISTRICT COURT ISANTI COUNTY TENTH JUDICIAL DISTRICT

Case Type: Harassment
Court File Number: 30-CV-22-272
Nolvin Antonio Portillo Pinto
Petitioner

vs
Ever Omar Rivera Sanchez
Respondent

Notice of Issuance of Harassment Restraining Order by Publication

To Respondent:
YOU ARE NOTIFIED that a Harassment Restraining Order has been issued on 5-10-22.

A hearing has not been scheduled. You may request a hearing on this matter by filing a Request for Hearing HAR301 with the Court within twenty (20) days of the date this Notice is published. You may get a copy of the HRO from the court administrator's office at the following address: 555 18th Avenue SW, Cambridge, MN 55008

Failure to appear at a scheduled hearing or to get a copy of the Harassment Restraining Order will not be a defense to prosecution for violation of the Court's order.

Date May 27, 2022
Teresa Cheever
Deputy

Published in the Isanti-Chisago County STAR on June 9, 2022

CITY OF CAMBRIDGE PUBLIC NOTICE

Notice of Public Meeting on Stormwater Program
The City of Cambridge will hold a public meeting on its Stormwater Pollution Prevention Program (SWPPP) at approximately 6:00 p.m., Monday, June 20, 2022 at City Hall. The public meeting will be held as part of the regularly scheduled Council Meeting.

The SWPPP is part of the City's permit that was prepared to meet requirements of a federally mandated storm water permit program administered by the Minnesota Pollution Control Agency (MPCA). The overall goal of the program is to reduce the amount of sediment and pollution that enters surface waters.

Staff will present the draft annual report which addresses each of the best management practices that make up the City's SWPPP. Residents may submit written comments or questions to Cambridge City Hall, Attn: Todd Schwab, 300 3rd Avenue Northeast, Cambridge, MN 55008 and also have the opportunity to provide written or oral comments on the City's SWPPP plan at this meeting. The City will consider all comments and may make reasonable adjustments to the SWPPP as part of the final annual report submitted to the MPCA.

Published in the Isanti-Chisago County STAR on June 9, 2022

OFFICE OF THE MINNESOTA SECRETARY OF STATE MINNESOTA LIMITED LIABILITY COMPANY/ARTICLES OF ORGANIZATION MINNESOTA STATUTES, CHAPTER 322C

The individual(s) listed below who is (are each) 18 years of age or older, hereby adopt(s) the following Articles of Organization:
ARTICLE 1 - LIMITED LIABILITY COMPANY NAME:
Northern Care & Comfort Services LLC

ARTICLE 2 - REGISTERED OFFICE AND AGENT(S), IF ANY AT THAT OFFICE:

Name: Zachary Fielder
Address: 208 Broadway St SW Isanti MN 55040 US

ARTICLE 3 - DURATION: PERPETUAL

ARTICLE 4 - ORGANIZERS:
Name: Zachary Fielder
Address: 208 Broadway St SW Isanti MN 55040 US

By typing my name, I, the undersigned, certify that I am signing this document as the person whose signature is required, or as agent of the person(s) whose signature would be required who has authorized me to sign this document on his/her behalf, or in both capacities. I further certify that I have completed all required fields, and that the information in this document is true and correct and in compliance with the applicable chapter of Minnesota Statutes. I understand that by signing this document I am subject to the penalties of perjury as set forth in Section 609.48 as if I had signed this document under oath.

SIGNED BY: Zachary L Fielder
MAILING ADDRESS: None Provided

EMAIL FOR OFFICIAL NOTICES: ZLFielder@gmail.com
Work Item 1312805400027

Original File Number 1312805400027

STATE OF MINNESOTA
OFFICE OF THE SECRETARY OF STATE

FILED
05/06/2022 11:59 PM
Steve Simon
Secretary of State

Published in the Isanti-Chisago County STAR on June 9, 16, 2022

STATE OF MINNESOTA COUNTY OF ISANTI DISTRICT COURT 10 JUDICIAL DISTRICT

Case Number: 30-CV-21-696

In the matter of the Petition of Blaisdell Enterprises LLC

For a New Certificate of Title after Mortgage Foreclosure

AMENDED ORDER TO SHOW CAUSE

TO: Colleen A. Johnson, Bank America, N.A., Isanti County Examiner of Titles, and Blaisdell Enterprises LLC

Upon receiving and filing Plaintiffs Motion to Continue Hearing comes before the court and the Court having considered the Motion finds that the Motion should be granted.

IT IS therefore ORDERED that the hearing scheduled for May 16, 2022, shall be continued until the 6th day of July, 2022 at 1:30 p.m. that you, and all persons interested, appear before this Court, and then, or as soon thereafter as the matter can be heard, show cause, if there is any, why this Court should not enter an Order as follows:

That the Registrar of Titles, upon the filing with the Registrar of a certified copy of this order, cancel Certificate of Title No. CPT67.0 and enter a new Certificate of Title for the land therein described in favor of Blaisdell Enterprises LLC c/o PNC Mortgage, a Division of PNC Bank, N.A., 2215 Stark Road, Harris, MN 55032 free from all memorials now appearing on the present Certificate of Title, the last of which is Document No. T1901, and free also from the memorial of this Order.

Attendance is required only by those who wish to object to the entry of the above described Order.

IT IS FURTHER ORDERED that this Amended Order to Show Cause shall be served:

(a) at least 10 days before the hearing upon the above-named parties residing in this State in the manner provided by law for the service of Summons in a civil action;

(b) at least 14 days before the hearing upon each of the above-named nonresidents by sending a copy of this Order to the nonresident's post office address, by registered or certified mail, return receipt requested;

(c) upon each of the above-named parties who cannot be found by two weeks published notice and by sending a copy of this Order at least 14 days before the hearing by first class mail to the last known address of the party and by sending another copy of this Order at least 14 days before the hearing by first class mail to the address of such party as stated on the Certificate of Title if an address is so stated.

Dated May 11, 2022
Amy R. Brosnahan
Judge of District Court
Published in the Isanti-Chisago County STAR on June 9, 16, 2022

REQUEST FOR BID

2022 LOCAL STREET OVERLAY FOR THE CITY OF NORTH BRANCH CHISAGO COUNTY, MINNESOTA

NOTICE IS HEREBY GIVEN that Bids for the construction of 2022 Local Street Overlay will be received online through QuestCDN vBid™ until Tuesday, June 21, at 11:00 a.m. Central Standard Time. Immediately following expiration of the time for receiving bids, representatives of the City of North Branch will publicly view Bids at an online Bid opening meeting. Those interested in viewing the online Bid opening are welcome to join the meeting by logging on to https://zoom.us/join or calling 1 312 626 6799 and entering Meeting ID 913 6537 1954 and Passcode 717717. The as-read online Bid results will be available at www.questcdn.com following the Bid opening.

The Project includes the furnishing of all labor and materials for the construction complete in-place, of the following approximate quantities:
1,600 SY Remove and Replace Bituminous Pavement
1,000 LF Remove and Replace Concrete Curb and Gutter
13,340 SY Mill Bituminous Pavement (Special)
6,900 TON Type SP 9.5 Wearing Course Mix (2,C)
3,000 SY Site Restoration

The provisions of MINN. STAT. 16C.285 Responsible Contractor are imposed as a requirement of this contract. All bidders and persons or companies providing a response/submission to the Advertisement for Bids of the City of North Branch shall comply with the provisions of the statute.

Information and Bidding Documents for the Project can be found at www.questcdn.com. Documents may be downloaded from the website for a nonrefundable fee of \$45 by inputting Quest project #8219334 on the website's Project Search page.

The website will be updated periodically with addenda, lists of registered plan holders, reports, and other information relevant to submitting a Bid for the Project. All official notifications, addenda, and other Bidding Documents will be offered only through the website www.questcdn.com. Neither Owner nor Engineer will be responsible for Bidding Documents, including addenda, if any, obtained from other sources.

Bids will only be accepted via the electronic bidding service through QuestCDN.

The City Council reserves the right to reject any and all Bids and to waive any Bids received without explanation. No Bid may be withdrawn for a period of 60 days.

For all further requirements regarding Bid submittal, qualifications, procedures, and contract award, refer to the Instructions to Bidders that are included in the Bidding Documents.

DATED: May 24, 2022

BY ORDER OF THE CITY COUNCIL

s/s Renae Fry
City Administrator
North Branch, MN

Published in the Isanti-Chisago County STAR on June 2, 9, 2022

PROBATE

STATE OF MINNESOTA ISANTI COUNTY DISTRICT COURT 10TH JUDICIAL DISTRICT

Court File Number 30-PR-22-40
Case Type: Informal Probate
In re the Estate of DAN EUGENE ELLEFSON, Deceased

NOTICE OF INFORMAL APPOINTMENT OF PERSONAL REPRESENTATIVE AND NOTICE TO CREDITORS (WITHOUT A WILL)
To All Interested Persons and Creditors:

Notice is hereby given that an application for appointment of personal representative has been filed with the Probate Registrar. No will has been presented for probate. The application has been granted.

Notice is also given that the Probate Registrar has informally appointed the following:
Karianna Onshus Ellefson
4640 287th Court NW
Isanti MN 55040

as Personal Representative of the Estate of the Decedent. Any heir, devisee or other interested person may be entitled to appointment as Personal Representative, or may object to the appointment of the Personal Representative. Unless objections are filed pursuant to Minn. Stat. § 524.3-607, and the court otherwise orders, the Personal Representative has full power to administer the Estate, including, after 30 days from the date of issuances of letters, the power to sell, encumber, lease or distribute real estate.

Notice is also given that, subject to Minn Stat. § 524.3.801, all creditors having claims against the Estate are required to present the claims to the Personal Representative or to the

Court Administrator within four (4) months after the date of this Notice, or the claims will be barred.

Dated May 9, 2022
Pamela Kreier, Probate Registrar
Heather Mickelson, Court Administrator

Isanti County District Court
Published in the Isanti-Chisago County STAR on June 9, 16, 2022

FORECLOSURES

NOTICE OF MORTGAGE FORECLOSURE SALE

THE RIGHT TO VERIFICATION OF THE DEBT AND IDENTITY OF THE ORIGINAL CREDITOR WITHIN THE TIME PROVIDED BY LAW IS NOT AFFECTED BY THIS ACTION. NOTICE IS HEREBY GIVEN: That default has occurred in the conditions of the following described mortgage: DATE OF MORTGAGE: July 19, 2019 ORIGINAL PRINCIPAL AMOUNT OF MORTGAGE: \$196,377.00 MORTGAGOR(S): Lisa Ehlen and Jeremy Ehlen, wife and husband MORTGAGEE: Mortgage Electronic Registration Systems, Inc. acting solely as a nominee for LeaderOne Financial Corporation TRANSACTION AGENT: Mortgage Electronic Registration Systems, Inc. MIN#: 1007212-1200188590-1 DATE AND PLACE OF FILING: Isanti County Minnesota, Recorder, on October 4, 2019, as Document No. A486861. ASSIGNED TO: PLAZA HOME MORTGAGE, INC. by an Assignment of Mortgage dated 03/20/2020 and recorded on 03/20/2020 as Document No. A491047. Freedom Mortgage Corporation by an Assignment of Mortgage dated 04/06/2021 and recorded on 04/13/2021 as Document No. A503289. U.S. Bank National Association, not in its individual capacity but solely as trustee for RMTP Trust, Series 2021 Cottage-TT-V by an Assignment of Mortgage dated 02/08/2022 and recorded on 04/04/2022 as Document No. A514638. LEGAL DESCRIPTION OF PROPERTY: Lot 9, Block 4, North Ridge 3rd Addition, Isanti County, Minnesota

PROPERTY ADDRESS: 1435 MARIGOLD DR, CAMBRIDGE, MN 55008 PROPERTY I.D.: 15.141.0330 COUNTY IN WHICH PROPERTY IS LOCATED: Isanti THE AMOUNT CLAIMED TO BE DUE ON THE MORTGAGE ON THE DATE OF THE NOTICE: Two Hundred Thirty-Four Thousand One Hundred Sixty and 64/100 (\$234,160.64) THAT no action or proceeding has been instituted at law to recover the debt secured by said mortgage, or any part thereof; that there has been compliance with all pre-foreclosure notice and acceleration requirements of said mortgage, and/or applicable statutes; PURSUANT, to the power of sale contained in said mortgage, the above described property will be sold by the Sheriff of said county as follows: DATE AND TIME OF SALE: 10:00AM on July 28, 2022 PLACE OF SALE: Isanti County Sheriff's Office, 2440 Main Street South, Cambridge MN 55008 to pay the debt then secured by said mortgage and taxes, if any actually paid by the mortgagee, on the premises and the costs and disbursements allowed by law. The time allowed by law for redemption by said mortgagor(s), their personal representatives or assigns is 6.00 months from the date of sale. If Mortgage is not reinstated under Minn. Stat. Section 580.30 or the property is not redeemed under Minn. Stat. Section 580.23, the Mortgagor must vacate the property on or before 11:59 p.m. on January 28, 2023, or the next business day if January 28, 2023 falls on a Saturday, Sunday or legal holiday. "THE TIME ALLOWED BY LAW FOR REDEMPTION BY THE MORTGAGOR, THE MORTGAGOR'S PERSONAL REPRESENTATIVES OR ASSIGNS, MAY BE REDUCED TO FIVE WEEKS IF A JUDICIAL ORDER IS ENTERED UNDER MINNESOTA STATUTES, SECTION 582.032, DETERMINING, AMONG OTHER THINGS, THAT THE MORTGAGED PREMISES ARE IMPROVED WITH A RESIDENTIAL DWELLING OF LESS THAN FIVE UNITS, ARE NOT PROPERTY USED IN AGRICULTURAL PRODUCTION, AND ARE ABANDONED." Dated: May 26, 2022 U.S. Bank National Association, not in its individual capacity but solely as trustee for RMTP Trust, Series 2021 Cottage-TT-V Randall S. Miller and Associates, PLLC Attorneys for Assignee of Mortgage/Mortgagee Edinburg Executive Office Center, 8525 Edinbrook Crossing North Suite #210 Brooklyn Park, MN 55443 Phone: 952-232-0052 Ur File No. 22MN00130-1 A-4749870 05/26/2022, 06/02/2022, 06/09/2022, 06/16/2022, 06/23/2022, 06/30/2022

Published in the Isanti-Chisago County STAR on May 26, June 2, 9, 16, 23, 30, 2022