

ACTION PACKED: Winter sports teams face full schedules to make up for weather. **PAGES 9 - 10**

Cambridge-Isanti Schools figures out ‘hardest’ school calendar

BY BILL STICKELS III
 EDITOR@COUNTYSTAR.COM

Despite unusual calendar anomalies for the next two years, Cambridge-Isanti Schools has figured out a way to maintain district families’ summertime traditions immediately before the school year begins and after it concludes.

During a typical Minnesota school year calendar, the first day of school is the Tuesday after Labor Day. This is actually by state statute, with exceptions only given to districts with extenuating circumstances, such as construction projects set to begin as soon as school lets out the following spring. This year, however, since Labor Day isn’t until Sept. 7 — the latest date it can fall on, the state has allowed districts to start the 2026 - 2027 school year on Tuesday before Labor Day, Sept. 1.

That option, according to Assistant Superintendent of Teaching and Learning Dr. Jason Bodey, wasn’t too popular since it would mean being in school during such summertime staples as the State Fair.

On the flip side, starting school the Tuesday after Labor Day like usual, would mean school would be in session an extra week in June, resulting in a June 11 graduation day. Bodey said this, too, wasn’t appealing to many on the calendar committee.

“This was the hardest calendar I have ever been a part of trying to put together,” Bodey said.

Bodey explained the committee started by doing two rough schedules: one that started school before Labor Day and one that started

school after Labor Day. From that, they made adjustments to each calendar to see what might work better.

“I think we had about seven or eight versions of the calendar, and what we started running into is there were no good answers on either one of them,” Bodey said. “We really started thinking about how this impacts the community, how this impacts the families and the more we thought about it, the more complicated it got.”

Somehow, the committee managed to finally work out a calendar that both starts after Labor Day and finishes with graduation on June 4.

“I don’t know how we got there,” Bodey admitted, “but it meets all our student/staff day requirements. We’ve done the math over and over again. It balances nicely our trimesters and our instructional time.”

A couple of the highlighted adjustments to make the calendar work were to remove a professional learning day on Nov. 6 and make that a student learning day.

Another professional learning day was moved to Martin Luther King Day, which the students would have had off anyway.

“It is a common practice other districts do,” Bodey said.

Another adjustment is Spring Break will be the week prior to Easter Sunday, March 28, with students returning on March 29. Normally, Spring Break is during a separate week, and students have Good Friday and the Monday after

‘This was the hardest calendar I have ever been a part of trying to put together.’

Dr. Jason Bodey
 Assistant Superintendent of Teaching and Learning

SEE **CALENDAR**, PAGE 8



BILL STICKELS III | COUNTY STAR

The future is here

Junior Jacket gymnast Iyla Kotila executes a back tuck during the group’s performance while scores are being tabulated during the Bluejacket All-Around Invite.



CONTRIBUTED

Coyote Wild will kick off Isanti’s 2026 street dances with a performance on June 13.

Isanti street dances set, with possible fourth concert

BY BILL STICKELS III
 EDITOR@COUNTYSTAR.COM

As the area shivers through the latest cold winter blast, thoughts of warmer weather and Isanti street dances help keep spirits high.

This year, there will be the typical three Isanti street dances, held downtown. However, a fourth

concert, which would be labeled as “Amp it Up” and held in the Bluebird Park amphitheater, might be added. Additionally, the city of Isanti is looking into either an alternative site or dates in case of inclement weather.

The first of the concerts is June 13, featuring the band Coyote Wild. On their website, they describe

themselves as “a fearless team of musicians and singers who perform country and rock the way they were meant to be played!”

The second street dance is July 25, featuring Legacy Of The Loud — another band making its inaugural appearance on Main Street Isanti.

SEE **STREET DANCES**, PAGE 2

NHH ROOFING PLUS
 Call for a free estimate!
763.444.0405

THE **HOMETOWN ROOFER** SINCE 2001

STORM DAMAGE REPAIR
ROOFING • WINDOWS
SIDING • DOORS • DECKS

BEST of the Star Award Winner

VOTED **ONE OF THE BEST ROOFING COMPANIES OF 2023**

MARVIN

AUTHORIZED REPLACEMENT CONTRACTOR

NHH Roofing Plus is the Marvin Authorized Replacement Contractor for Central Minnesota

NHHROOFINGPLUS.COM





SKITZOFONIK.COM

Skitzo Fonik is scheduled to perform at the Isanti Street Dance in 2026.



FACEBOOK

Legacy of the Loud is scheduled to perform at the Isanti Street Dance in 2026.

STREET DANCES: Possible alternatives to canceling on rainy days sought

FROM PAGE I

This band touts itself as “covering history’s top selling artists such as: Journey, Led Zeppelin, AC/DC, Guns N’ Roses, Bon Jovi,” among others. Finally, Aug. 8 is the return of Skotzo Fonik, an Isanti street dance regular, to the stage. The fourth concert, which doesn’t have a specific date nailed down yet,

hopes to feature former Isanti resident and current Nashville artist Troy Castellano. In the past, if the street dances were rained out, the city had to eat the costs and go with one fewer concerts. Because of that, the city is searching for possible alternatives to canceling. According to City Administrator Josi Wood, the Isanti Fire District has agreed to let the city use the rodeo

grounds as a same-day alternative site. She added the three scheduled bands all indicated they were fine with that as long as they were given advanced notice of the move. However, Wood added the city still needs to get the go-ahead from the League of Minnesota Cities insurance company since the rodeo grounds are technically not on city property. The other alternative would be to

select a later date that could be determined at any time. According to Wood, the band scheduled to perform at the time of the rain-out would be given first right of refusal for the alternative date. If that didn’t work for that band, the city would seek out other bands who might be available. Either way, the city indicated it was bound and determined to find some way to hold three street dances in 2026.

North Branch public works building damaged in fire

BY MOLLY WHELAN
NEWS@COUNTYSTAR.COM

North Branch firefighters responded to a fire call at a familiar address Sunday night – 6388 Maple St., one of the city’s public works buildings, which contains several of its electrical generators. The generators, in addition to bearing the brunt of the damage, also appear to be the culprit, although the investigation is in the early stages. During the weekend cold snap, the city began running them to fuel the power grid on Friday night, due in part to other generators on the SMMPA grid having been damaged in recent winter storms. By about 8 p.m. Sunday, Jan. 25, it appears the unusual demand for energy took its toll, according to City Administrator Matthew Hill. “They estimate that the ceiling caught fire from the exhaust system,” Hill said during the Jan. 27 North Branch City Council meeting. Hill said the damage from the fire and

its suppression was extensive, and two generators are no longer operational after being submerged in water and fire suppression foam. “The equipment is likely to be a total loss,” Hill told the council. Witnesses reported seeing smoke blowing through the mortar of the bricks, Hill said, which may indicate that pressure inside the building did enough damage that the building will need to be replaced, too. However, the fire department worked quickly to contain and stop the blaze, and the loss is covered by the city’s insurance, he said. Additionally, the city will be able to meet its power generation responsibilities using three other generators attached to the main public works building, Hill said. Once investigations are completed, the work needed will almost definitely exceed the \$175,000 threshold requiring the city collect bids to repair, replace and rebuild, Hill said.

‘The equipment is likely to be a total loss.’

Matthew Hill
North Branch
City Administrator



BILL STICKELS III | COUNTY STAR ARCHIVES

A youngster participated in the 2025 Anoka-Ramsey Community College Candlelight Ski and Fruiluftsliv Festival.

Ski, hike and sled at campus candlelight event

Anoka-Ramsey Community College will host its Candlelight Ski and Fruiluftsliv Festival Feb. 21 at the Cambridge Campus. The free event invites the public to explore two miles of candlelit trails along the Rum River for skiing or hiking. Trails wind through the campus and the Spirit River Nature Area, with skiing starting from the Campus Center on the east side of County Road 70. Attendees are encouraged to bring sleds, and free parking is available next to the Campus Center. Afterward, participants can warm up at campfires, make s’mores, drink

hot cocoa, play outdoor winter games, and sled on nearby hills. Live music will be provided by Drew Peterson on the heated patio. Peterson, an Americana artist with more than 20 years of touring experience, is known for his clever songwriting and heartfelt performances. The campus café will offer soups and other food items. The event runs from 5:30 to 8 p.m. Saturday, Feb. 21. Weather updates and additional information are available on the college’s Facebook event page. ~ Anoka-Ramsey Community College



Check out our online jobs board!





WE MEAN BUSINESS.

Talk to us about strategic local advertising solutions for your small business!



MON & THUR
Alcoholics Anonymous
7p.m. Main Street
Church 6500 Main
Street, North Branch,
MN. Enter east door.
Informational Hotline is
763-312-1088

MON - FRI
Senior Dining
North Branch, Chisago
County Senior Center
11:45 a.m. Diners need to
pre-register at least one
day in advance call 651-
674-1956 between 10 a.m.
and 1 p.m. An annual
registration form is re-
quired before dining.

MONDAYS
Women's only Adult
Children of Alcoholics and
Dysfunctional Families
7 p.m. at Cambridge
Lutheran Church ,
621 Old Main St N,
Cambridge Mn 55008
For more information
contact Rebecca at 612-
702-2844 or CoraJayne
612-210-1605

Fresh Beginnings Alanon
Family Groups meets
Monday's 7 - 8 p.m. at
Access Church, 4359 -
392nd St., North Branch.
Visit minnesotan-
orth-al-anon.org

Book Club
Third Monday 11 a.m.
to noon at Isanti SAC,
140 Buchanan St., N.
#164 Cambridge. Isanti
County Library lends
the books and there is
no cost to participate.
For info: sacs@midco-
network.com

TUES & THURS
Boxing for Those
w/Parkinson's
Tuesdays and Thurs-
days at 10:15 a.m. and 5
p.m. at 115 Adams Street

South, Cambridge. For
more information, call
763-221-6883.

TUESDAYS
Braham Parkinson's
Support
7 p.m. third Tuesday
of the month. Braham
Evangelical Lutheran
Church, 905 Central
Drive W., Braham. For
info. call Lonnie Ander-
son at 612-423-1863.

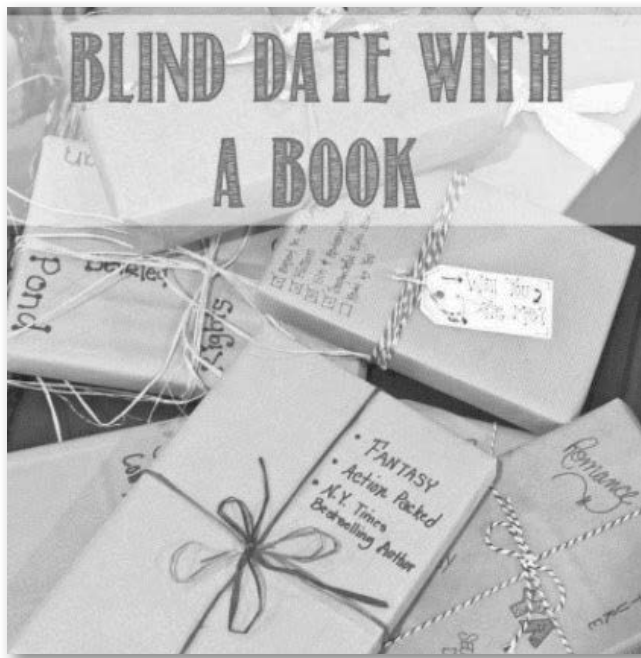
Alzheimer's Support
Third Tuesday of each
month from 10-11 a.m.
at GracePointe Heritage
Center, 322 River Hills
Place North, Cambridge.
For info call Lyndsey
Larson 763-691-6172.

Memory Cafe
First Tuesday of every
month, 10 - 11:30 a.m. at
GracePointe Crossing
Heritage Center, 322
River Hills Place North,
Cambridge. Contact Julie
at 763-306-5066 for info.

PrimeTime Singers
Cambridge Lutheran
Church, 1:30 p.m. A
community choir for
ages 60+, no audition or
fee required. Fellowship
follows rehearsal. Info:
612-619-2111.

Grief Share
Faith Lutheran
Church, 109 2nd Ave.
NW, Isanti. Meets 2nd
and 4th Tuesday of each
month at 2 p.m. 763-444-
9201.

Celebrate Recovery
At First Baptist in
Cambridge(304 Main St
S.) every Tuesday. There
is a light meal at 5:45
p.m., large group at 6:30
p.m., and small groups at
7:30 p.m. Visit Celebra-
terecover.com for more
info.



Cambridge Library is hosting a Blind Date with a Book event starting Feb. 1 thru Feb. 28.

WEDNESDAYS
Alanon
7 p.m. at the Isanti
Alano Club, 790 Heritage
Blvd. Isanti. 763-444-4605

Chisago County Drop-In
Center
Open 10 a.m.-2 p.m.
at Main Street Church,
6500 Main Street, North
Branch. For individuals
18 yrs or older living
with mental illness. Info:
651-213-5600 or Adult-
mentalhealth.org.

THURSDAYS
East Central Baby Cafe
Free drop-in breast-
feeding support from
11 a.m. to 12:30 p.m. at
the Adult Enrichment
Center, 540 5th Ave NW,
Cambridge, MN. For info.
call 763-689-1711.

Cambridge-Edgewood AFG
Cambridge-Edgewood
Al-Anon Family Group

meets from 7-8 p.m. at
Cambridge Lutheran
Church, 621 Old Main
Street N. Visit minneso-
tanorth-al-anon.org for
info.

Parkinson's Support Group
Third Thursday of the
month - 1-2:30 p.m. The
Levande, 2011 6th Lane
SE, Cambridge, MN for
info call 763-325-0100

ACA Adult Children of
Alcoholics/ Dysfunctional
Families Meeting
7 p.m. at Access
Church, 4359 392nd St,
North Branch. For info.
call 612-251-6556 or email
acanorthbranch@gmail.
com

Fresh Beginnings Alanon
Family Group
From 7-8 p.m. at Access
Church, 4359 392nd
Street, North Branch.
Visit minnesota-al-anon.
org for info.

Medicare and Medicaid 101 Open House

Third Thursday of the
month from 1-3 p.m. Get
your questions answered
by trained agents. (763)
689-7390 or ecrlib.org for
info.

SATURDAY GriefShare

At Joy Lutheran
Church, from 9-10:30
a.m. each Saturday, ex-
cept for the 1st Saturday
of each month. Contact
Mary Schuett, 561-222-
3347, for more informa-
tion.

Joyful Walking Club
The 1st Saturday of
each month, from 9-10
a.m., around the perim-
eter of Joy Lutheran's
ball field in Cambridge.
Contact Mary Schuett,
561-222-3347, for more
information.

JAN 31
Walk by Faith Gala
5:30 p.m. at Union De-
pot 214 4th St. E, St. Paul.
All proceeds benefit the
Maddy Nelson Memorial
Foundation. For more
information visit: Walk-
ByFaithGala.com

FEB 1
Blind Date with a Book
Pick up a wrapped book
at the Cambridge Pub-
lic Library and return
rating slips by Feb. 28 for
prize drawings. Ages 14
and up.

FEB 5
Book Club
At 5:30pm we will be
meeting at Dana's Book-
store in Isanti to discuss
The God of the Woods
by Liz Moore. Join us!
Dana's Bookstore, 120
Heritage Blvd NE #3,
Isanti.

SENIOR CENTER WEEKLY EVENTS

CAMBRIDGE
140 Buchanan Street
Mondays
Bridge - 1 to 3 p.m.
Scrabble 10 a.m. to
noon (second Monday of
month)
Mahjong - noon to 3
p.m.
Tuesdays
Dominoes - 10 a.m. to
noon
Wednesdays
Cribbage - 9 to 11 a.m.
Wizard 11 a.m. to noon
Pinochle 12:30 to 3 p.m.
Mahjong 12:30 to 2:30
p.m.
Thursdays
500 - 12:30 to 3 p.m.
Bunco - 10 a.m. to noon
(Third Thursday of
month)

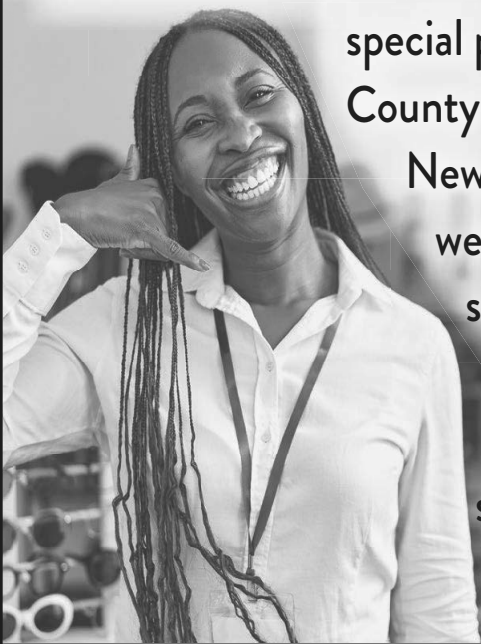
CHISAGO COUNTY
38790 6th Avenue,
North Branch
Mon, Wed, Fri.
Exercise with Connie -
10:30 to 11:30 a.m.
Monday & Wednesday
500 - starting at 12:45
p.m.

Tuesdays
Music - provided before
the meal - 11:15 a.m.
Dominoes - starting at
10 a.m.
Thursdays
Bingo - starting at 10
a.m.
Hand and Foot - start-
ing at 12:30 p.m.
Fridays
Cribbage - starting at
12:45 p.m.

 **LIKE US ON FACEBOOK!**
Isanti-Chisago County Star

Inside Sales Representative

Northstar Media is looking for a motivated person who likes to work with customers over the phone as an Inside Sales Rep. Mon, Tue, Wed, 20-25 hours per week in the Cambridge office. Responsibilities include classified ad sales, service and church directory ad sales, and special page/section ad sales in the Isanti-Chisago County Star, Pine City Pioneer, North Pine County News, Kanabec County Times and Advertiser as well as being able to sell into other newspapers, shoppers and online. Must have strong phone skills, be able to multitask, be good with computers and have strong organizational skills. Wage is \$16-18/hour. Possible full time position for the right candidate.



If interested, please submit resume to Jeff Andres, Publisher jeff@northstarmedia.net



Are You Getting Enough Fiber in Your Work Day?

Sign up today and
get a \$100 gift card!*

*Terms and conditions apply



Reliable Internet **NOW!**

844-453-6983

BOGO
40% OFF
Minimum purchase of 4
+ \$200 OFF
Your Entire Purchase
Minimum purchase of 4
ENDS 3/31



RENEWAL
by ANDERSEN
FULL-SERVICE WINDOW & DOOR REPLACEMENT

 **877-917-1515**

BECOME A
Hero
Donate blood

Video didn't completely kill the radio star

Last week I was invited to be a guest on Happy Productions' "The Local Lowdown." For those who don't know what that is, Happy Productions is a web-based radio station here in Cambridge. It is pretty much identical to an over-the-air radio station, but it isn't regulated by the FCC. As they say on their Facebook page, they "stream local artists, indie music, jazz bands, jam bands, classic rock and everything in between."

Leading up to the interview, I started to recall what I think was the only other time I was "interviewed" on a radio station,

wondering if this setup is anything like I remember. It is, complete with the cliché microphones and headphones worn by the DJ. It's just more advanced, with digital recordings rather than records.

Longtime residents might recall Cambridge used to have a radio station of its own. It was based just north of where the Highway Department Facilities currently sit. The antenna is still there, but I think it now is a cell phone tower.

Back then, the call letters were KABG, which I guess is as close as they could get to call letters sounding like Cambridge. Either the station itself or one of the shows was known as "the KABG Patch" — obviously before the famous dolls came into existence. If I remember correctly, it later changed to WLOL once those call letters became available following the previous station losing the Twin Cities' Top 40 radio ratings battle to KDWB.

At some point, it was purchased by some bigger radio conglomerate and turned into a fully automated station. Finally, the station itself went off the air and the antenna was used to magnify the signal of a Twin Cities station.

Getting back to my on-air debut, it might have been part of a Cub Scouts tour of the station. Or maybe a class trip, I don't recall that part. Anyway, we were gathered in the booth and the DJ had each of us say our names. And, well, that was it. The other thing I recall is off the air, the DJ offered to let us choose the next song he would play. I don't remember anyone else's choices, but I said "The Coward of the County" by Kenny Rogers.

I know that sounds very strange, knowing me now. But it was before I — or anyone for that matter — was introduced to the awesomeness that is 80s Rock.

Obviously, my "Local Lowdown" interview involved more than saying my name. The segment lasted 20 minutes, but it felt like only five. Shawn Sullivan, the owner/DJ/Mr. Everything fired off a bunch of questions about me and the newspaper business in general. I had no advanced knowledge of any of the questions, so I had to think quickly, which I think made me more at ease and the whole experience even more enjoyable.

At the end of the time, Shawn suggested I make more appearances, which I am inclined to take him up on. Who knows, maybe it could turn into a regular monthly thing. And knowing Shawn, I wouldn't be surprised if he played a certain song as a lead-in to it.

BILL STICKELS III is editor of the Isanti-Chisago County Star. He can be directly reached at 651-407-1245, through our main office number at 763-689-1181, ext. 156 or editor@countystar.com.

LETTER GUIDELINES

The Isanti-Chisago County Star encourages readers to share their viewpoints of community issues by writing Letters to the Editor. Publishing decisions are made on questions of free speech, good taste, public interest and public sensitivity.

The Star reserves the right to edit for accuracy, clarity, libel and civility and reserves the right not to publish a letter or to hold a letter to a later edition. Personal complaints or attacks, plagiarized material, religious treatises or submissions from organized letter-writing campaigns will not be published.

GUIDELINES FOR ALL SUBMISSIONS

- Letters must be submitted by noon on Tuesdays to editor@countystar.com or via mail to 930 S. Cleveland St., Cambridge MN 55008. The Star reserves the right to extend its deadline in the interest of timeliness of letters and/or space availability.
- Letters to the editor must be 400 words or less.
- Each letter writer may have one letter published every 30 days, or four print cycles.
- Anonymous letters will not be published. Letter signatures must include the writer's first and last name,

community of residence and phone number. Phone numbers will not be published. Only letters originating from writers who live, work or have some other relevance to the Star circulation area will be published.

- An identification line may be added to the writer's letter identifying his or her occupation or title as it applies to the topic of the letter.
- Special rules apply during election season.

For questions about the Star's policies on letters contact the editor at 763-689-1181 ext. 107 or editor@countystar.com.

LETTERS TO THE EDITOR

Observations from former ICE staff member

To the editor,

I served in the federal government for 15 years, first as an ICE Mission Support Specialist in Minneapolis and later as a Counter-Terrorism Analyst for the FBI. I know federal law enforcement in Minnesota, and I know that Operation Metro Surge is not immigration enforcement. It is political retaliation, wrapped in fear and executed with impunity.

When I worked for ICE from 2008 to 2014, our Minneapolis office was small but effective. We upheld the law while preserving human dignity — a balance that is both possible and necessary. During my tenure, the Obama administration deported three million people, yet it managed these actions without murdering U.S. citizens in the streets.

The current administration has deployed 3,000 agents to Minnesota — a state where undocumented residents make up only 1.5% of the population. Contrast this with Texas or Florida, where that figure is 7%, yet neither faces a similar "surge." Minnesota is being targeted for its politics. This was confirmed by Attorney General Pam Bondi's letter to Governor Walz, offering to withdraw federal agents only if the state surrenders our voter registration files. When the price of withdrawing lethal force is the surrender of Minnesota's voter data, then the mission isn't public safety — it's election subversion.

Two American citizens are dead at the hands of our government. Renée Good was shot after uttering her final words, "I'm not mad at you." Alex Pretti was tackled and shot ten times while trying to help a woman who had been pepper-sprayed. He was legally carrying a firearm but was fully disarmed before being executed.

As a gun owner and supporter of law enforcement, I am utterly appalled and outraged.

If you support the Second Amendment, you should oppose agents killing a disarmed citizen. If you support the First Amendment, you should protect the right to free speech and assembly. If you support small government, you should oppose federal agents violently entering homes, shutting down businesses, and costing local taxpayers \$18 million per week.

Every citizen with a conscience must demand an end to this operation. Call Representative Pete Stauber's office at 218-481-6396 every day. Insist he uphold his commitment as a former police officer and call for an independent investigation into the deaths of Renee and Alex. Every American should expect professional, constitutional law enforcement — not political revenge wrapped in brutality.

As a federal employee, I took an oath to "support and defend the Constitution against all enemies, foreign and domestic." I'm calling on every resident of Minnesota's 8th Congressional District to do the same.

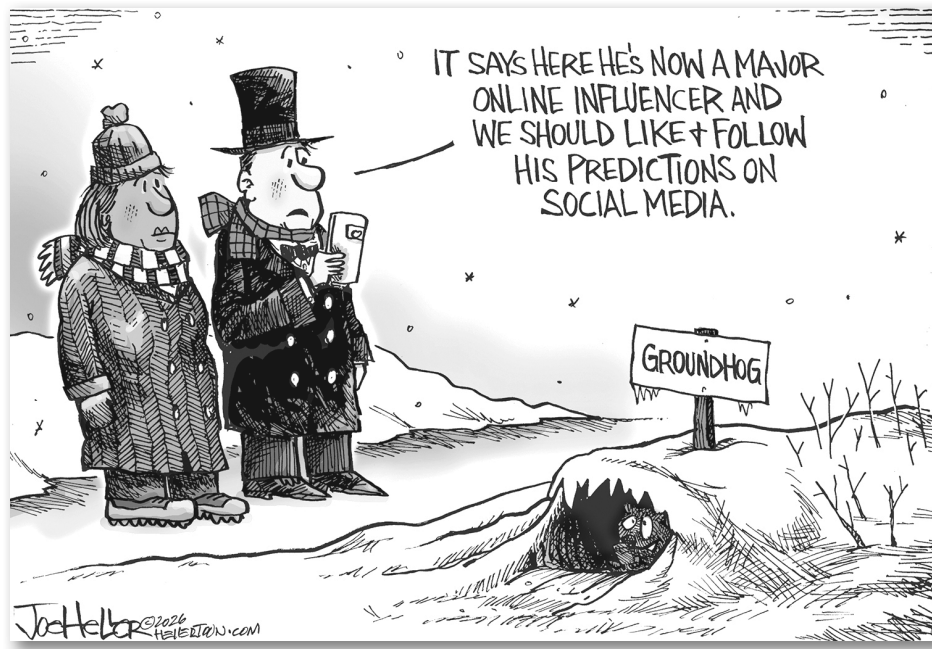
Leah Phifer
Formerly of Isanti

Teaching current events should be balanced

To the editor,

The January 22, 2026 edition of the County Star newspaper featured a front page photo of what appeared to be 30 or more local high school students with posters on the side of a city street. They all purported to be opposed to the immigration laws of this country (anti-ICE). To be fair, the school district counted the absence

SEE LETTERS TO EDITOR, PAGE 5



Your Best Source for Community Information

Isanti-Chisago County Star is published every Thursday by Northstar Media, Inc., 930 Cleveland St. S., Cambridge, MN 55008. Periodicals postage paid at Cambridge, MN 55008. POSTMASTER: Send address changes to Isanti-Chisago County Star, 930 Cleveland St. S., Cambridge, MN 55008

Editor..... Bill Stickels III
editor@countystar.com
Editor Assistant..... Stacy Verdick Case
news@countystar.com
Publisher..... Jeff Andres
jeff@northstarmedia.net
Advertising/Classifieds..... Kellie Champion
sales@countystar.com
Graphic Designer..... Kassie Lex
starcomp@countystar.com
Circulation..... Scott Kittelson
circulation@countystar.com

ISANTI-CHISAGO
COUNTY STAR



Published by
Northstar Media, Inc.
PRINTERS • PUBLISHERS
930 South Cleveland, Cambridge, MN 55008



AN EDITION OF
ISANTI-CHISAGO COUNTY STAR
NEWS DEADLINE:
Noon Tuesday

ADVERTISING DEADLINE:
4 p.m. Tuesday

CLASSIFIED DEADLINE:
4 p.m. Tuesday

LEGALS DEADLINE:
Noon Monday



LIABILITY DISCLAIMER INDEMNIFICATION
The Newspaper shall not be liable for slight changes or typographical errors that do not lessen the value of the advertisement. The Newspaper shall not be liable or responsible for any error in any advertisement except to give the Advertiser credit for so much of the space occupied by the advertisement as is materially affected by the error; credit shall be by refund or republication of the advertisement at the election of Newspaper. Such credit shall not be given for more than one incorrect insertion unless the Publisher is notified in writing of the error before the repetition of the insertion. When the Advertiser wishes to correct or change copy submitted as a "proof," the Newspaper shall not be liable for the changes or corrections unless they are received by the Newspaper within a reasonable length of time before the deadline for publication. If an advertisement is requested to run after copy deadline, the Newspaper will not honor an adjustment request if an error occurs. No specific page or position shall be guaranteed. The Advertiser or Agency shall indemnify the Newspaper for any attorney's fees incurred in defending against claims, pay any judgments against the Newspaper, and pay associated expenses and losses that are caused by the publication of any advertisement submitted by or published at the direction of the Advertiser or Agency, including claims for libel, copyright infringement, and invasion of privacy.

countystar.com • Phone: (763) 689-1181

Copyright © 2026 by
Northstar Media, Inc.

The Role of Reliable Technology

How Infrastructure Supports Learning and Safety

Technology plays an essential role in learning, safety, and communication at North Branch Area Public Schools (NBAPS).

Every day, Viking students and staff rely on technology systems to support instruction, maintain safe school environments, and stay connected with families. Reliable technology helps ensure learning stays on track, communication remains consistent, and schools can focus on what matters most, supporting students.

That is why planning ahead for technology infrastructure is so important, allowing us to be strategic and ensure our systems perform as expected.

In 2017, our community demonstrated strong support for NBAPS by approving three ballot questions that made significant investments in our schools. Questions 1 and 2 focused on building updates, essential repairs, and learning spaces. Question 3 established a Capital Projects Levy dedicated to technology infrastructure, data security, and systems that support safe school buildings.

Following last year's districtwide facilities study, we can confidently share that the investments from Questions 1 and 2 have positioned our schools well. Our buildings are in good condition, we are able to

serve a growing student population, and we are maintaining desired class-size ranges. Most importantly, North Branch Area Public Schools does not need to ask voters to fund new school construction.

The remaining need is the continued support of reliable technology systems. On February 10, 2026, North Branch Area Public Schools will hold a special election asking voters to renew the existing Capital Projects Levy established in 2017.

Since its approval, the Capital Projects Levy has supported cybersecurity and network protections that safeguard student and staff information, technology that contributes to safer school environments, and the infrastructure our classrooms rely on each day. It has also helped reduce long-term maintenance costs through building automation and ensured students and staff have access to reliable, well-maintained devices that minimize disruptions to teaching and learning.

It is also important to share what this renewal means for taxpayers. The Capital Projects Levy is a renewal at the same tax rate. A homeowner with a \$350,000 home currently pays about \$107 per year and would continue paying that same amount under the renewal. The only change would come from a change in the value of the home itself. For example, if a home's value increased from \$350,000 to \$400,000 over time, the levy cost would adjust by approximately \$17 annually as a result of the increased value of the property.

At North Branch Area Public Schools, we value every dollar our voters provide. We take seriously the responsibility that comes with community support. Over the past five years, NBAPS has earned four credit rating upgrades, reflecting improved financial health, strong budget management, and responsible long-term planning. These improvements have also eliminated the need for cash-flow borrowing, allowing more resources to go directly to teaching and learning. Our stewardship reflects a shared belief in responsible planning, trust, and long-term care for our schools. Our community has invested wisely, and those investments are paying off for students today while positioning our schools well for the future.

The renewal vote will take place on February 10 at Main Street Church. More information about the special election can be found at www.isd138.org/page/notice-of-special-election.

Strong schools are built through trust and conversation. Thank you to the many people who participated at our recent community conversations and have contacted me with questions, ideas, and simply to share their Viking pride. I welcome the chance to connect with you. I can be reached at spaul@isd138.org or 651-674-1011.

SKOL! Vikings!
SARA PAUL is superintendent of North Branch Area Public Schools. She can be reached at 651-674-1000 or spaul@isd138.org.

LETTERS TO THE EDITOR CONTINUED FROM PAGE 4

during school hours as uncensored. What hurts is seeing all taking one point of view.

Consider what it means to be educated about the issues past and present from a balanced point of view. The classroom teacher does their level best at posturing no personal point of view. Instead, they present (not always) the liberal and conservative talking points with equal vigor and conviction. Maybe even a couple spokespersons from the community would take opposing views and openly and respectfully debate in the classroom.

At the conclusion, the classroom teachers calls on the students to decide; points to the posters and placards to be marked up and says, "you are going to the city streets to stand and promote your positions... opposing views take opposite sides of the street."

The foregoing was the kind of education I received 55-plus years ago. Today our taxes are paying for the advancement of mostly one point of view; a kind of indoctrination that is going off the cliff and will not end well. Frankly, our freedoms and liberties are at stake.

**Al Budde
Cambridge**

Lies, lies, lies

To the editor,
Lies, Lies, Lies – 30,753 lies. An average of 21-plus per day during Trump's first term in office. He's set for more than that this term. Imagine someone keeping track of your lies – that means you tell a lot of lies, doesn't it? How can anyone believe a word he says when that many lies are told daily?

He keeps repeating lies so his followers believe the untruths. Who wants to associate with anyone who lies to you that much every day? Weren't you raised to not lie? We need a President not an Authoritarian.

"Domestic terrorists" seem to be the ICE agents — 3,000 now inhabiting Minnesota. Its not Renee Good, who was shot by them. And, not Alex

Pretti, shot by ICE this weekend – tackling him to the ground and then shooting him just because he was helping a woman they pepper sprayed. The video is clear what they did to him.

Kristi Noem with DHS lies as much as Trump. ICE agents seem to be Trump's own personal military, doing his bidding. He says they are immune from being prosecuted. The brutal way they detain people is horrendous. They don't ask for documentation, just knock them down, handcuff them and drag them off. It takes days, weeks or months for them to get the help they need if detained illegally.

You hear horror stories every day about ICE detention centers. They sound like concentration camps to me. People are afraid to leave their homes not knowing if they'll be abducted. Racial profiling is happening.

Tom Emmer seems to applaud the ICE violence. I'm with the ICE protesters in Minneapolis. Minnesota seems to be on Trump's agenda for retribution. ICE needs to leave our state. They've done enough damage. Trump thinks no laws apply to him. A set of laws for him and another for those he doesn't like. He doesn't obey any court orders, just appeals them when they go against him. He's destroying everything good about America. Nothing he's done since taking office has helped Americans. He only thinks of himself and cares very little about the American people. The economy is suffering, healthcare costs have risen, he's alienated most of our allies, he talks about sending the military everywhere and the way things are going he will probably start World War III. He's out of touch with every-day Americans. Trump's not happy if he's not causing chaos on a daily basis and there's three more years of this chaos.

**Cathy Nelson
East Cambridge**

2025 fatal crash numbers lower

Question: I listened to your radio show the other day and you were talking about fatal crashes were lower last year, what was the break down on the numbers?

Answer: In 2025, Minnesota saw a significant improvement in road safety, recording 370 traffic-related deaths. This marks the lowest fatality count since 2019 and reflects a 22% decrease from 2024 and 8% percent less than in 2023.

While the overall trend is positive, specific categories show where our roads are getting safer and where challenges remain:

Speed-related fatalities (98) were 29 percent less than in 2024 (138), 43 percent less than in 2021 (171) and the lowest since 2019. Unbelted deaths (70) were 31 percent less than in 2024 (101) and the lowest

in the past seven years. Distraction-related deaths (21) were 30 percent less than in 2024 (30), 34 percent less than in 2020 (32) and the lowest in the past seven years. Bicycle fatalities (14) were twice as high as in 2024 (7). The next highest count since 2019 was in 2020 (10). Motorcycle deaths (57) were 25 percent less than in 2024 (76) and the lowest since 2019.

The Minnesota State Patrol remains committed to a dual-pronged approach for 2026. While public education on the dangers of speeding, impairment, and distraction is vital, it must be supported by extra enforcement.

Let's work together to make 2026 the safest year yet. Buckle up, put the phone away, and drive for the conditions.

A portion of state statutes were used with permission from the Office of the Revisor of Statutes. If you have any questions concerning traffic related laws or issues in Minnesota, send your questions to Trp. Jesse Grabow – Minnesota State Patrol at 1000 Highway 10 West, Detroit Lakes, MN 56501-2205. (You can follow him on "X" @MSPPPIO_NW or reach him at, jesse.grabow@state.mn.us).



Ask A Trooper
Jesse Grabow

Call-A-Specialist

Attorneys

**JOSLIN & MOORE
LAW OFFICES P.A.**
Clark A. Joslin
221 NW 2nd Ave., Cambridge
763-689-4101

Equipment

USED PARTS
Tractors • Haybines • Balers
Combines • Choppers
LARSON IMP.
6 Miles East on Hwy. 95
Cambridge, MN
(763) 689-1179
*Used Tires • New Tires
Tire Chains*

Your Local Specialists Resource



Dentists

South Main Dental
FAMILY FRIENDLY DENTISTRY
EST 2003
Experienced Dentists and Friendly Staff
**Melissa J Pierson, DDS
Adon E Crook, DDS**
(763) 552-1616
Cambridge, MN

Veterinarians

East Central VETERINARIANS
Your Elderly Family Doctor
Serving the Community for 40 years.
Your comprehensive veterinary service.
OPEN 6 DAYS A WEEK!
Cambridge • 763-689-4604
807 Main St. N
Mora • 320-679-4197
2004 Mahogany St.
www.ecv.vet

Your Business HERE!

Pick your category and your business will be listed under it!
Call Kellie to advertise
651-407-1237
sales@countystar.com

OBITUARIES

MILESTONES

Dixie Leah Randall

Dixie Leah Randall, of Braham, passed away peacefully on Wednesday, January 21, 2026, at Grace-Pointe Crossing in Cambridge. She was 89 years old.

Dixie, the daughter of Richard and Leona (Hahn) Sando, was born on January 20, 1937, in Edgeley, North Dakota. The family resided in North Dakota and Iowa, but later settled in Ogilvie, Minnesota and it was there that she attended school. She graduated high school at Ogilvie in 1955. After high school, she attended St. Cloud State University and graduated with a teaching and speech therapy degree in 1959.

Not long after graduating, Dixie married Waldo Randall and they moved to Rochester where they lived for six years, where Dixie worked as an elementary school teacher and speech therapist. Later, they moved to Braham, started a family and were blessed with three children. Waldo and Dixie later bought and operated the funeral home in Braham.

Dixie donated a lot of her time and made a difference in her community through her passion for public service by volunteering. She was a founding member of Braham's Dollars for Scholars program, was a Red Cross volunteer for many years as chair of local blood drives and for disaster relief. She served as a FEMA board representative, volunteered for the Friends of the Library, election judging, and many other groups to help the Braham community. She was always willing to help for any cause at Braham Lutheran Church.

Dixie loved to cook, was an avid quilter, and enjoyed knitting (she stayed busy, knitting about 50 caps per year to donate to children in need). She led a fun and interesting life, full of activities she loved, such as going to the state fair, berry picking, and camping. She and Waldo traveled extensively for leisure and for purpose with trips to China, Romania, Norway, Hudson Bay, northern Canada, Alaska, Zaire, and many national and state parks. She adored flowers, birds, and reading every historical marker that she ran across.

But, more than anything, Dixie loved her children and her grandkids. She made a point to follow up on and enable every child's activities and interests. She had a passion to try to help them along in education and in life. When travel had become harder for Waldo, the family would instead rent a cabin on Woman Lake for a week every summer, where all the grandchildren could fish, swim, and compete in the Longville turtle races. Holidays and gatherings were loaded with traditional foods and activities. She raised a family of lefsa and potato dumpling makers who all loved spending time together.

Braham is a tight and wonderful community where Dixie thrived with a great number of friends and connections. She was grateful for her friends in the schools, at church, the Park Café, Elmhurst, sewing, knitting and book clubs. If she was allowed to converse with enough time, Dixie could find a connection with anyone in the world, within six degrees of Braham Minnesota.

Dixie was preceded in death by her parents, husband Waldo, grandson Logan, and brother Rod Sando.

She is survived by her children, Heidi (Troy) Wilson, Eric (Amy) Randall, and Jed (Elisa) Randall; grandchildren, Isaiah, Luke, Ben, Axel, Aria, Tia, Cade, and Evan; sisters, Cathy (Maynard) Berland and Marilyn Lindquist; sister-in-law Janice Sando; many nieces, nephews, other relatives and friends.

A Funeral Service was held on Monday, January 26, 2026, at the Braham Ev. Lutheran Church with Pastor Suzanne Begin officiating. Interment was in the Rice Lake Cemetery in Braham. Memorial are preferred to the Braham Ev. Lutheran church. Arrangements were entrusted to the Hamilton Funeral Homes – Rock Chapel in Braham. Condolences may be posted at www.hamiltonfhs.com.

We Buy Houses For Cash!

Liz Buys Houses Connects Home Sellers with Legitimate Cash Buyers Nationwide! No Repairs. No Fuss.

Liz Buys Houses • Fair Cash Offer • No House Repairs • Quick Closing • Simple Home Sale • No Realtor Fees • Convenient Closing Date

Call (844) 978-0683

Raymond H. Renstrom

Raymond H. Renstrom, 89, of Cambridge, MN, passed away on Thursday, January 22, 2026, at his farm in rural Hinckley.

He was born on October 11, 1936, to John and Mathilda (Jensen) Renstrom. Ray was raised in



Mora, attended and graduated from Mora High School in 1954. He later pursued a degree from the University of Minnesota, which set him on the path to a successful career in engineering. Ray began his career at Blawnox Milk Distribution, with time spent working in their New York location. Returning to Minnesota, Ray moved on to work at CE Rogers in Mora before settling into his role at RTD Companies in Cambridge, where he would remain for 17 years until retiring in 1997. Dedicated to serving his community, Ray was involved in various organizations, including Toastmasters for 10 years. Ray also drove for the Heartland Express and taught 55 Alive classes through community education for 24 years.

Ray was a devout member of First Baptist Church in Cambridge, where he served as an usher and was actively involved in the Boys Brigade for many years. As a Gideon, he was passionate about sharing the Word of God with the world. Throughout his life, Ray remained intellectually curious and devoted to his faith. He enjoyed reading Louis L'Amour novels, absorbing historical accounts of WW1 and WW2, and local history from the Kanabec and Isanti County families. Ray's love of machinery manifested itself in his vast collection of machinery manuals which he tended to read cover to cover. He was known for his analytical mind and his love of sharing, in detail, the great knowledge he found such joy from.

Quality time with friends over coffee at Herman's Bakery and McDonald's was a highlight of his days. Ray found solace in playing Solitaire, word finds, and basking in the beauty of his hunting land in Hinckley since 1964. Many of his favorite days were filled with appreciating the view of the fields and creek from his second home.

He was preceded in death by his parents; daughters-in-law, Denise Renstrom and Karen Renstrom; siblings, Marie Anderson, Lloyd Renstrom, Gloria Soderstrom, Esther Mueller, and Patty Larsen.

Ray will be deeply missed by his wife of 65 years, Lila; son, Michael Renstrom (Marla Maurer); daughters, Sharlyn Schedlbauer (Morey Borchardt), Rebecca (Ryan) Nelson; grandchildren, Kendra (Cody) Trenary, Sam Raymakers (Mandy Reuter), Kelsi (Dan) Poster, Brittney Raymakers, Jacob (Kaiya) Nelson, AnnaGrace Nelson, AJ Nelson; great-grandchildren, Addi Thomas, Landon Thomas, Odin and Aksel Poster, Lainey Lynne Raymakers; sister, Edna McLain; sisters-in-law, Yvonne (Jack) Quiggle, Arlene (Gary Greenwald) Gabrielson; brother-in-law, Loren Nelson; nieces, nephews, other relatives and friends.

Celebration of Life Service 11 a.m., Friday, February 13, 2026 at First Baptist Church in Cambridge. Visitation one hour prior to the service. Private interment in Isanti Union Cemetery. Condolences at www.carlsonlillemoen.com Arrangements by Carlson-Lillemoen Funeral Home and Cremation Services of Cambridge.



ELMHURST COMMONS
— ASSISTED LIVING —

400 SW 3rd St., Braham, MN 55006

320-396-0440

Call today to schedule your tour

Dorothy Helen (Jansen) Hagfors

Dorothy Helen (Jansen) Hagfors, of Stanchfield, peacefully passed away on Tuesday, January 20, 2026, at her home. She was 92 years old.

Dorothy was born on February 26, 1933, in Robbinsdale, Minnesota, to Lloyd and Myrtle (Bjork) Jansen. She was the oldest of four children and graduated from high school in Robbinsdale. Dorothy met and married Harold Hagfors. They first lived in the Twin Cities before moving to their farm in Stanchfield in 1969. Together, they raised five children: Rick, Ted, Tom, Will, and Mary Jo.



She devoted herself to raising her children and started the first mothers' group in Fridley. After moving to the country, she

worked in the office at the original Dennis Kirk in Rush City and co-owned Hagfors Electric. She was an active member of St. Phillips in Fridley and Braham Evangelical Lutheran Church. Dorothy also belonged to The Order of the Eastern Star, Job's Daughters International, Sons of Norway, and Meals on Wheels. She and Harold enjoyed traveling to Alaska, Hawaii, and Norway, and camping with their children. Dorothy had a heartfelt passion for sewing, pouring her love into creating special outfits, doll clothes, and quilts for her daughter, granddaughters, and great-granddaughters. She not only made beautiful pieces but also shared her talent with the girls. Faith was central in her life, and she deeply loved her husband Harold, her children, grandchildren, and great-grandchildren. She will be missed by everyone who knew and loved her.

Dorothy was preceded in death by her parents, her husband of 70 years, Harold, her brothers Edward and Charles, and her sister Carol.

She is survived by her children: Rick (Kim), Ted (Debi), Tom (Cheryl), Will (Cindy), and Mary Jo; 12 grandchildren: Kristen (Kevin), Adam (Jennifer), Ryan, Michael (Brittany), William Jr (Emeri), Tim, Jennifer (Joel), Laura (Matt), David (Dallas), Brian (Rikki), Marsha, and Michelle (Mike); 20 great-grandchildren: Andersen, Jensen, Blake, Reagan, Rhett, Scarlett, Jake, Nora, Bella, Liam, Alex, Elias, Ezra, Addison, Andrew, Lynnea, Easton, Lewis, Stetson, and Frankie; as well as many nieces, nephews, other relatives, and friends.

In lieu of flowers, memorial contributions may be made to St. Croix Hospice and Braham Evangelical Lutheran Church in honor of Dorothy's lifelong dedication.

A Memorial Service will be held on Saturday, March 28, 2026, at Braham Evangelical Lutheran Church, with Rev. Dr. Suzanne Begin officiating. The service will also be live-streamed on the church's Facebook page. Inurnment will take place at Rice Lake Cemetery in Braham. Arrangements are entrusted to the Hamilton Funeral Homes – Rock Chapel in Braham. Condolences may be posted at www.hamiltonfhs.com.



East Central Livestock Sales
Mora, MN

HAY & CATTLE AUCTIONS
EVERY MONDAY

SALE SCHEDULE

HAY SALE- 10AM CATTLE SALE- NOON
STARTING WITH SQUARE BALES STARTING WITH CALVES

HAY & CATTLE DROP OFF ON SUNDAY FROM 7AM-7PM
OVERNIGHT HAY & WATER PENS AVAILABLE
CONTACT THE BARN FOR ON-SITE CATTLE EVALUATION
GET YOUR HAY AND CATTLE CONSIGNED - TRUCKING AVAILABLE
SELLING ALL CLASSES OF LIVESTOCK

www.salebarninfo.com 320-679-4333
LOCATED ONE MILE EAST OF MORA - COMPLIMENTARY COFFEE & COOKIES EVERY MONDAY
CURRENT CATTLE MARKET PRICES CONTACT JOE 320-679-4333
CURRENT HAY MARKET PRICES CONTACT RAY 651-252-5115

Indoor seed starting tips from favorite greenhouses

I receive emails with gardening tips from a few of my favorite nurseries. The following information on seed starting came from Gertens' who utilized information from the UMN Extension link: <https://extension.umn.edu/planting-and-growing-guides/starting-seeds-indoors> This site provides much more detailed information that can be put in this article.

When to start the seeds varies by plant. The number of weeks is based on the average last frost date. This varies depending on where you live in the state. Generally, seed starting takes place between Early February and Early April. An extensive list of plant varieties and starting date ranges can be found at the UMN Extension link listed above.

The following items are essential equipment to grow seeds indoors.

- Sterile containers. A wide variety of options are available. What's

used is based on preference and price. My sister (also a Master Gardener) utilizes individual peat pellets/peat pots, while I tend to recycle plastic containers like those that originally had yogurt or lettuce/winter greens (size depends on the number of plants wanted).

- A tray to hold the containers and keep them from direct contact with a heat mat.
- Soil-less seed starting mix: look for a light, fluffy, fertilizer free blend.
- Lights: Fluorescent or LED lights (grow lights or shop lights as long as they provide a full spectrum of light).
- Heat mat: available in multiple sizes-choose one that fits your space.
- A fan: used to create strong seedlings.

- Seeds (read the back of the seed packet for details like planting depth, germination time, light requirements, days to maturity & transplanting tips).
- Vermiculite: for lightly covering seeds and retaining moisture.
- Plant Labels: write the type, variety and name of the company the seed was purchased from on the label and insert it into the container as soon as possible. Trust me, sprouted seeds look VERY similar. (The company name & variety can be useful if the seed performs poorly.)

- Chemical free water: (melted snow or tap water that has sat for 24 hours or more).

Supplemental light, heat and fans are non-negotiable for indoor seed starting in Minnesota. Natural daylight is not strong enough or long enough. Even south facing windows will produce leggy, spindly seedlings. Use adjustable lighting fixtures that can be raised as the plants grow. Keep the lights 2-4 inches above the top of the plants and provide the light for 12-16 hours per day. Turn the lights off at night. Plants need a rest period just like people.

Heat mats serve a dual purpose by speeding up germination (especially for peppers, tomatoes & egg-plants) and bottom heat helps prevent damping off, a fungal disease. Once seeds have sprouted, remove the heat mat. The best heat mats have thermostats/temperature settings which allow the mat to be set at the optimal temperature for each type of seed.

Once the sprouts graduate to seedlings (have more than the initial 2 leaves), start a fan at a low setting to create a gentle breeze that blows across them for about an hour a day to strengthen stems and prepare the plants for outdoor conditions.

Water the seedlings from the bottom if possible and add a diluted liquid fertilizer (1/4 strength) to the water once multiple sets of true leaves appear.

As the plants grow it may become necessary to



transplant them into larger individual containers, so they aren't crowded and to encourage healthy root growth. When transplanting, grab the plant by a true leaf, not the stem. Stems can be easily damaged. A damaged stem will kill the plant.

Finally, before planting outside, be sure to harden the plants off by gradually introducing them to wind, sun and cooler temperatures. This will take at least a week's time; daily increasing the number of hours kept outside.

Planting the seeds and watching them grow gives me something green to enjoy while winter lingers outside.

Chisago County Master Gardeners is part of a collaboration between Chisago County and The University of Minnesota Extension to deliver practical education and research you can use at home, at work and in your community. You can reach Chisago County Extension services by email at mnext-chisago@umn.edu or by phone at 651-277-0151.

New 4-H club launches winter clothing drive

Rum Riverside, a new 4-H club in Isanti County, has launched its first service project with a Winter Clothing Drive to help people in need.

The idea came after a friend of the club volunteered at a homeless shelter in the Twin Cities and noticed a shortage of warm clothing. Club members decided to collect winter items to help meet that need.

The group's goal is to collect 100 items or more, including coats, hats, gloves, snow pants and boots — anything that can help people stay warm during Minnesota winters.

Community members are invited to participate. A donation drop box is located at the Cambridge Library. Items may be new or used in good, working condition, preferably adult sizes. Donations will be accepted



through Feb. 5.

In its first year, the club said it hopes the project will bless many people and allow members to take part in the community in a meaningful way. ~ Isanti County 4H

STUDENT NAMES IN THE NEWS

Student Achievement Lists

Kaija Ann Olson of Cambridge (Chancellor's) from UMN Crookston

Tony Lee, and **Haley Lynn Piecek** of Cambridge; **Chong Her**, and **Mal Miller** of North Branch (Dean's) from The University of Minnesota Crookston

Mac Nelson of Braham; **Emily Hurlbert**, **Gavin Huuki**, **Ethan Roddy**, and **Ninjai Vang** of Cambridge; **Nokomis Carlson**, and **Allison Cattell** of Isanti; **Waylon Fairbanks**, and **Lexi Knoblach** of North Branch (Dean's) from St. Cloud State University

Logan Bender of North Branch (Dean's) from Northern Illinois University

Olivia Johnson, of Braham; **Heather Wilson**, of Isanti; **Melanie Anderson**, **Dominick DiPaolo**, **Bekah Fish**, **Jeremy Johnson**, **Paige Peaslee** and **Amanda Pedersen**, of North Branch; and **Natalie Berg**, **Mikayla Ertz**, **Elizabeth Groen** and **Veronica Hemming**, of Rush City (Dean's) from Winona State University.

Katie Piehl, of North Branch (Dean's) from Southern New Hampshire University.

Krysjen Staab, of Stacy; **Alana Yang**, of Stacy; **Ryan Thunstrom**, of Isanti; and **Kalista Hanser**, of Chisago City (President's) from Southern New Hampshire University.

Hailey Bistodeau, of North Branch (Dean's) from Buena Vista University.

Helen Pust, of North Branch (Dean's) from Elmhurst University.

Logan Westman, of Stanchfield (Dean's) from Carthage College.

Elinor Tetzlaff, of North Branch (Dean's) from Central Lakes College

Winry McCourt of Cambridge, and **Ashley Schintz** of Isanti, (Dean's) from The University of Wisconsin-Superior

Ashley Bistodeau, of North Branch

(Dean's) from Baldwin Wallace University

Jade Fauver and **Grace Gabler**, of Cambridge; **Hailey Reiter** and **Kayleigh Tobias**, of Isanti; and **Josie Parrucci**, of North Branch (Dean's) from Bemidji State University.

Laci Leverty, **Trevor Thompson** and **Reese Wilking**, of Isanti; and **Hunter Raml**, of Stacy (Dean's) from South Dakota State University.

Garrett Korkowski, of North Branch (President's) from Iowa State University.

Timothy Steven Jakoblich, **Garrett Korkowski** and **Cynthia Peterson**, of North Branch (Dean's) from Iowa State University.

Sara Kathryn Piatz, **Rhett Brian Hudoba** and **Beau Oliver Hudoba**, of Braham; **Tucker Kolb**, **Anthony Espitia-Gregorio**, **Colten Deitz**, **Anna Katelyn Cain**, **Eli Schurbon**, **Ashley Rusthoven** and **Jacob Meyer**, of Cambridge; **Lucas Joel Wike Jr.** and **Lucas Hoglund**, of Dalbo; **Cash James Rohman**, of Harris; **Sydney Elizabeth Lorsung**, of Isanti; and **Hunter Gruba** and **Alexandra Renee Cran**, of Stacy (Dean's) from North Dakota State University.

John Challander, **Brandon Montag** and **Maraya Wilttrout**, of Cambridge; **Jon Parsons**, of Isanti; **Adam Shoberg** and **Natalie Tveit**, of North Branch; and **Madison Jeske**, of Rush City (Dean's) from University of Wisconsin-Stout.

Degrees

Garrett Korkowski (Bachelor of Science, Geology, B.S., Magna Cum Laude) and **Al-Ghazaali Golden Touray** (Bachelor of Science, Aerospace Engineering, B.S.) of North Branch from Iowa State University

Lukasz Andrews (Bachelor of Arts, Business Administration), of Isanti, from the University of Jamestown.

Tucker Kolb (Bachelor of Science, Mechanical Engineering), of Cambridge, from North Dakota State University.

Your New Lake Home in Cambridge



575 Eleins Lake Rd, Cambridge, MN
New Build 2024 w/ 3 large bedrooms, 3 bathrooms, custom built hickory kitchen cabinets & floors

\$550,000 REDUCED to \$530,000
For sale or rent

Designed Homes & Remodeling

■ \$30,000 Seller Credit

Create the backyard you've always dreamed of!

■ Call Today: 612-751-2600

■ Learn More: mndesignedhomes.com

■ Features Your Family Will Love:

- Bright, open-concept layout
- Quality finishes and thoughtful design
- Great neighborhood close to schools & parks

Visit us online at

CountyStar.com

Cambridge-Isanti Schools School Calendar 2026-27						
July 2026						
Su	M	Tu	W	Th	F	Sa
			1	2	3	4
5	6	7	8	9	10	11
12	13	14	15	16	17	18
19	20	21	22	23	24	25
26	27	28	29	30	31	
August 2026						
Su	M	Tu	W	Th	F	Sa
						1
2	3	4	5	6	7	8
9	10	11	12	13	14	15
16	17	18	19	20	21	22
23	24	25	26	27	28	29
30	31					
September 2026						
Su	M	Tu	W	Th	F	Sa
						1
2	3	4	5	6	7	8
9	10	11	12	13	14	15
16	17	18	19	20	21	22
23	24	25	26	27	28	29
30						
October 2026						
Su	M	Tu	W	Th	F	Sa
						1
2	3	4	5	6	7	8
9	10	11	12	13	14	15
16	17	18	19	20	21	22
23	24	25	26	27	28	29
30	31					
November 2026						
Su	M	Tu	W	Th	F	Sa
						1
2	3	4	5	6	7	8
9	10	11	12	13	14	15
16	17	18	19	20	21	22
23	24	25	26	27	28	29
30						
December 2026						
Su	M	Tu	W	Th	F	Sa
						1
2	3	4	5	6	7	8
9	10	11	12	13	14	15
16	17	18	19	20	21	22
23	24	25	26	27	28	29
30	31					
January 2027						
Su	M	Tu	W	Th	F	Sa
						1
2	3	4	5	6	7	8
9	10	11	12	13	14	15
16	17	18	19	20	21	22
23	24	25	26	27	28	29
30	31					
February 2027						
Su	M	Tu	W	Th	F	Sa
						1
2	3	4	5	6	7	8
9	10	11	12	13	14	15
16	17	18	19	20	21	22
23	24	25	26	27	28	29
30						
March 2027						
Su	M	Tu	W	Th	F	Sa
						1
2	3	4	5	6	7	8
9	10	11	12	13	14	15
16	17	18	19	20	21	22
23	24	25	26	27	28	29
30	31					
April 2027						
Su	M	Tu	W	Th	F	Sa
						1
2	3	4	5	6	7	8
9	10	11	12	13	14	15
16	17	18	19	20	21	22
23	24	25	26	27	28	29
30						
May 2027						
Su	M	Tu	W	Th	F	Sa
						1
2	3	4	5	6	7	8
9	10	11	12	13	14	15
16	17	18	19	20	21	22
23	24	25	26	27	28	29
30	31					
June 2027						
Su	M	Tu	W	Th	F	Sa
						1
2	3	4	5	6	7	8
9	10	11	12	13	14	15
16	17	18	19	20	21	22
23	24	25	26	27	28	29
30						

No School

School in Session

Teacher PD/Grading & Planning

Holiday, Buildings Closed

First/Last Day of School

All Staff Prof Development

FINAL 1/22/26

Cambridge-Isanti Schools School Calendar 2026-27

August 2026
31 All Staff Back-to-School Workshop

September 2026
1-3 Teacher Professional Development
7 No School: Labor Day (Buildings Closed)
8-11 Kindergarten Entrance Week
8-11 Preschool Entrance Week
8 First Day of School (Grades 1-5, 6 & 9)
9 First Day of School (Grades 7-8 & 10-12)

October 2026
9 No School: Teacher PD/Grading & Planning
14 No School: Parent/Teacher Conferences
15-16 No School: Professional Conventions

November 2026
26-27 No School: Thanksgiving (Buildings Closed)

December 2026
3 End of Trimester 1 (57 Days)
4 No School: Teacher PD/Grading & Planning
7 Start of Trimester 2
24-31 No School: Winter Break (Buildings Closed 24,25,31)

January 2027
1 No School: New Year's Holiday (Buildings Closed)
18 No School: All Staff Professional Development/ MLK Jr Day

February 2027
12 No School: All Staff Professional Development
15 No School: Presidents' Day (Buildings Closed)

March 2027
4 End of Trimester 2 (54 Days)
5 No School: Teacher PD/Grading & Planning
22-25 No School: Spring Break
26 No School: Holiday (Buildings Closed)

April 2027

May 2027
14 No School: Teacher Grading & Planning/ Weather Make-Up Day
31 No School: Memorial Day (Buildings Closed)

June 2027
4 End of Trimester 3 (58 days)- Last Day of School/Graduation
7 Teacher Grading & Planning
19 Holiday (Buildings Closed)

2026-2027 NBAPS Calendar						
North Branch Area Public Schools Adopted 11-13-2025 38705 Grand Avenue 651-674-1000 North Branch, MN, 55056						
July 2026						
S	M	T	W	T	F	S
			1	2	3	4
5	6	7	8	9	10	11
12	13	14	15	16	17	18
19	20	21	22	23	24	25
26	27	28	29	30	31	
August 2026						
S	M	T	W	T	F	S
						1
2	3	4	5	6	7	8
9	10	11	12	13	14	15
16	17	18	19	20	21	22
23	24	25	26	27	28	29
30	31					
September 2026						
S	M	T	W	T	F	S
						1
2	3	4	5	6	7	8
9	10	11	12	13	14	15
16	17	18	19	20	21	22
23	24	25	26	27	28	29
30	31					
October 2026						
S	M	T	W	T	F	S
						1
2	3	4	5	6	7	8
9	10	11	12	13	14	15
16	17	18	19	20	21	22
23	24	25	26	27	28	29
30	31					
November 2026						
S	M	T	W	T	F	S
						1
2	3	4	5	6	7	8
9	10	11	12	13	14	15
16	17	18	19	20	21	22
23	24	25	26	27	28	29
30	31					
December 2026						
S	M	T	W	T	F	S
						1
2	3	4	5	6	7	8
9	10	11	12	13	14	15
16	17	18	19	20	21	22
23	24	25	26	27	28	29
30	31					
January 2027						
S	M	T	W	T	F	S
						1
2	3	4	5	6	7	8
9	10	11	12	13	14	15
16	17	18	19	20	21	22
23	24	25	26	27	28	29
30	31					
February 2027						
S	M	T	W	T	F	S
						1
2	3	4	5	6	7	8
9	10	11	12	13	14	15
16	17	18	19	20	21	22
23	24	25	26	27	28	29
30						
March 2027						
S	M	T	W	T	F	S
						1
2	3	4	5	6	7	8
9	10	11	12	13	14	15
16	17	18	19	20	21	22
23	24	25	26	27	28	29
30	31					
April 2027						
S	M	T	W	T	F	S
						1
2	3	4	5	6	7	8
9	10	11	12	13	14	15
16	17	18	19	20	21	22
23	24	25	26	27	28	29
30	31					
May 2027						
S	M	T	W	T	F	S
						1
2	3	4	5	6	7	8
9	10	11	12	13	14	15
16	17	18	19	20	21	22
23	24	25	26	27	28	29
30	31					
June 2027						
S	M	T	W	T	F	S
						1
2	3	4	5	6	7	8
9	10	11	12	13	14	15
16	17	18	19	20	21	22
23	24	25	26	27	28	29
30	31					

School closed/holiday

New teacher PD

New and 2nd year teacher PD

No school - PD

Welcome Conferences K-8

NBAHS Welcome Events

ALC/DLA Welcome Events

CCSLWC all students in session

Last day for seniors

First/last day of school

Graduation

Targeted Services / ESY begins and ends

BUZZ

Want to Create a Buzz About Your Business?

The right advertising strategy can take your business to the next level. We help retailers advertise effectively, we have the marketing expertise and resources to help your business succeed. From print and online advertising to special events, coupon campaigns, inserts and direct mail, find out which marketing tools can maximize your exposure to your target audience.

Call today, and let's get started!

COUNTY STAR

930 S. Cleveland • Cambridge, MN 55008
763-689-1181

Recycling one ton of paper conserves 7000 gallons of water.

Learn more about how and why to recycle at home.
recyclemoreminnesota.org

The Star is now on Instagram!
@isantichisagocountystar

COUNTY STAR

CALENDAR: Some schools opt for pre-Labor Day start

FROM PAGE 1

Easter off. This year, the Monday after Easter is a staff development day.

The only downside to this adjustment is it creates six consecutive weeks of classes, Monday through Friday, from the last week of March through the first week of May.

Bodey also noted the same difficulties will be experienced for the 2027 - 2028 school calendar, as Labor Day will be on Sept. 6.

NORTH BRANCH, BRAHAM OPTS FOR PRE LABOR DAY START

By contrast, North Branch Area Schools will begin on Tuesday, Sept. 1, with the last day for seniors

scheduled for May 21 and graduation day on May 23. The remaining grades will still have classes May 24 through 28.

Since Braham Area Schools traditionally hold their graduation ceremony on the Friday before Memorial Day, they will also start the school year on Sept. 1.

RUM RIVER ISANTI VFW POST 2735

410 Railroad Ave South, Isanti, MN 55040
(763) 444-9787

Non Profit

Kids Events for Easter & Fall Festival
Celebrations of Life • Benefits • Bike Rodeo

Open Mic

First Sunday of the month
Live Entertainment

Friday & Saturday 8pm
Check Facebook for dates & times

Feb 6th. The Gents, 7th.. Badjack, 12th. Kurt Bearinger,
13th Sam Kuusisto Band, 15th.. Silver Thunder,
20th.. Bad Behavior, 21st.. Ledfoot Larry,
27th.. Naked Cowboys, 28th Drop Tailgate

Bingo

Mon. & Wed. 6pm
Sat. 2pm
(two coveralls)

Meat Raffle

Mon., Wed. & Fri.
5:30pm
LIC #00291

Full Menu with Daily Features

Taco Tuesday • Fish Fry Fridays • Desserts
First Saturday of the Month - Prime Rib

Etabs Available!

Lottery & Pull Tab Booth!

LIC #00291

Happy Hours

11am - 1pm • 3pm - 5pm 10pm - 12am

Breakfast

Wed. - Fri. 7:30am - 11am
Sat. & Sun. 7:30am - 2pm

NORTHBOUND LIQUOR

\$21.99
Busch Light 24 pk, 16 oz cans

\$15.99
Blue Moon NA 12 can

\$34.99
Pendleton 1.75

\$27.99
Jack Daniels Original, Apple, Fire, Honey & Blackberry L

\$9.99
Serena NA Wines Sauvignon Blanc & Rose 750ml

\$8.99
Barefoot Wines All flavors 1.5

FEBRUARY SPECIALS

Beer of the Month
Hamm's 30 pk, cans **\$17.99**

Liquor of the Month

Wine of the Month

Fresca 8 pk, cans \$17.99

NO SPRITZ FRESCA MIXED \$17.99

RESERVA SERENA \$9.99

<

C-I, NB SCOREBOARD: JANUARY 21 - 27

January 21
NB gymnastics x, Princeton x

January 22
C-I girls basketball 45, Big Lake 50
C-I boys basketball 73, Big Lake 76
Northern Tier girls hockey @ Armstrong - ppd
C-I boys hockey vs. Northern Edge - ppd to Feb. 12

January 23
C-I girls wrestling @ Simley - canceled
C-I boys swimming & diving x, Princeton x
*First place finishers: Taylor Larkin (200 freestyle), Andrew Wilson (200 individual medley), Eddie Steman (diving)
C-I boys wrestling 66, Big Lake 5

January 24
C-I gymnastics - Bluejacket All-Around Invite
*Top finisher: Aubrey Wilson (36.0)
C-I boys swimming & diving - Bluejacket Invite - 3rd/4 teams
*Top finishers: 1st place - Ethan Rock (50 freestyle), 200 freestyle relay; 2nd place - 200 medley relay, Eddie Steman (diving), Joshua Clinkenbeard (100 backstroke), 400 freestyle relay
C-I boys wrestling 52, St. Paul Johnson 24

C-I boys wrestling 26, St. Peter 26
C-I boys wrestling 30, Centennial 30
C-I boys wrestling 36, Cannon Falls 28
NB boys basketball 72, Rock Ridge 64
NB girls basketball 24, Cloquet 72
Northern Edge boys hockey @ Spring Lake Park - ppd to Feb. 14

January 26
C-I girls basketball 65, North Branch 35

January 27
C-I boys swimming & diving 83, Tartan 103
*First place finishers: Andrew Wilson (200 individual medley), Eddie Steman (diving), Gabe Ludwig (100 butterfly), C-I girls basketball 63, Princeton 83
C-I boys basketball 71, Princeton 81
Northern Tier girls hockey x, Princeton/Becker/Big Lake x
C-I boys hockey 4, Becker/Big Lake 3 (OT)
*Blake Wotacheck - game-winning overtime goal
NB girls basketball 30, Big Lake 91
NB boys basketball 71, Big Lake 81
Northern Edge boys hockey 8, Luck 2



BILL STICKELS III | COUNTY STAR

Cambridge-Isanti's Tate Lines battles Princeton's Jaxson Olson for a rebound during the Bluejackets' game against the Tigers.



BILL STICKELS III | COUNTY STAR

Cambridge-Isanti's Paislie Guenther executes a full twist during her floor routine at the Bluejacket All-Around Invite.

Can you hear the moments that matter most?

Open 5 days a week with quick and easy scheduling to see our Doctor of Audiology for hearing assessments, hearing aid fittings and services. Call us today to schedule!



Alana Kennedy, Au.D.
Doctor of Audiology



Jessica Creasy
Hearing Instrument Specialist



Lori Lindstrom
Patient Care Coordinator

AUDIOLOGY
CONCEPTS
— You'll love what you hear

(763) 314-4832

HOME SCHEDULES: JAN. 29 - FEB. 7

To see both schools' full schedules, go to www.mississippi8.org. Schedules are subject to change with minimal advanced notice based on weather, availability of officials, or other reasons. Note: Northern Tier girls hockey is a co-op between Cambridge-Isanti, St. Francis, and North Branch. Northern Edge boys hockey is a co-op between North Branch and St. Francis. Their home games are at East Bethel.

Thursday, January 29
•C-I boys swimming & diving vs. Monticello (5:30 p.m.)
•C-I wrestling vs. Becker (6 p.m.)
•Northern Tier girls hockey vs. Forest Lake @ East Bethel (7 p.m.)
•NB boys basketball vs. St. Francis (5:15 p.m.)
•NB gymnastics vs. Chisago Lakes (6 p.m.)
•NB girls basketball vs. St. Francis (7 p.m.)

Friday, January 30
•C-I girls basketball vs. Minneapolis Southwest (7 p.m.)
•NB wrestling home invite (5 p.m.)

Saturday, January 31
•C-I girls basketball vs. Forest Lake (2:30 p.m.)

Monday, February 2
•C-I gymnastics vs. Becker (6 p.m.)
•C-I boys hockey vs. Osseo (7 p.m.)
•NB gymnastics vs. Monticello (6 p.m.)

Wednesday, February 4
•Northern Edge boys hockey vs. Monticello (7 p.m.)

Thursday, February 5
•C-I girls basketball vs. North Branch (7 p.m.)
•NB boys basketball vs. C-I (7 p.m.)
•Northern Edge boys hockey vs. Becker/Big Lake (7 p.m.)

Friday, February 6
•C-I wrestling vs. St. Francis (6 p.m.)

Saturday, February 7
•NB girls basketball vs. Grand Rapids (noon)

Winter wonderland: How trees survive the cold

Minnesota is well known for frigid cold and lots of snow, and this winter is no different. According to climate data, average 24-hour temperatures for December through February in the state are around 10 degrees Fahrenheit in the north and 18 degrees Fahrenheit in the south. But temperatures can plunge well below zero, as much of the state will experience over the next few days.

How do trees survive such cold? Like Minnesota's wildlife (and Minnesotans themselves) trees have adapted to survive this cold. Here are four ways the forests survive those deep winter days and nights.

TREES' CELLS HAVE NATURAL "ANTI-FREEZE"

Living trees are full of water – but since water expands when it freezes, what keeps trees from bursting open in winter? The water inside their cells contains dissolved substances, like sugar and other compounds, that lower the freezing point and prevent damage. This helps native trees like quaking aspen, which can survive temperatures colder than 50 below zero. Despite this natural protection, trees can get "frost cracks," which are vertical cracks in the wood caused by rapid

temperature drops when the water and sap inside the tree freeze and expand. Those cracks tend to happen at a weak spot in the bark. Native trees can get frost cracks, but non-native trees are more susceptible if they're not adapted to the weather. Frost cracks aren't fatal, but they make a tree more prone to decay, insects, and disease.

WINTER DORMANCY CONSERVES ENERGY

Hibernation isn't unique to animal species. As day length shortens in fall, many tree species such as birch and maple enter dormancy, a resting state similar to hibernation. Their metabolism slows, above-ground growth stops, and energy use drops, allowing them to conserve resources until spring.

TREES DROP OR KEEP THEIR LEAVES

Deciduous trees, like maples, birches and aspen, have leaves that aren't very cold hardy. To conserve energy and water contained in their leaves, deciduous trees move nutrients from leaves into their hardier woody tissues in the fall, then drop their leaves. Coniferous trees, on the other hand, hold less water in their leaves (or needles), which also have a protective wax-like coating that reduces their risk of freez-



Minnesota trees have adapted to the state's cold winters.

By keeping their leaves through the winter, coniferous trees also continue to produce energy through photosynthesis.

TREES ARE SHAPED FOR SHEDDING SNOW AND MAXIMIZING SUNLIGHT

Conifer species dominate the coldest forests on the globe. There are a few reasons, but one is their shape. The traditional, conical shape of a pine or spruce helps the snow slide off their branches, and their limbs are shorter and more flexible, reducing risk of breaking. The relatively longer lower branches of conifers, as compared to the more umbrella-like shape of some deciduous trees, also help the tree absorb more sunlight and photosynthesize when the sun is lower on the horizon, as it is during Minnesota winters. Minnesota's native trees have evolved strategies like these to survive and thrive in harsh winter conditions. These adaptations set them up for success come spring and highlight the importance of native species in building resilient ecosystems. The DNR offers resources, seedlings and forestry services to help landowners learn more about trees, forests, and what species would grow well on their land through the DNR Woodland Landowner Handbooks (mndnr.gov/woodlands) or by working with a professional forester to develop a woodland stewardship plan (mndnr.gov/foreststewardship/plan-writers.html). The DNR also offers native conifer seedlings through the Minnesota State Forest Nursery (mndnr.gov/forestry/nursery). - MN DNR

Join in on the fun!

UNIVERSITY OF MINNESOTA EXTENSION

Isanti & Chisago County 4-H!

4-H is a hands-on learning program for anyone in kindergarten through one year past high school (grade 13). Youth choose a project that's interesting to them and explore it with peers and caring adults. 4-H clubs are groups of youth who want to learn together and meet in every part of Minnesota.

Call with questions!

Isanti County 4-H Extension Educator, Cora Rost
mnext-isanti@umn.edu • 763-689-1810
<https://extension.umn.edu/local/isanti>

Chisago County 4-H Extension Educator, Josiah Cole
colex300@umn.edu • 651-401-3325
<https://extension.umn.edu/local/chisago>

Plus many, many more projects for grades K through 13 (one year past high school)

This page is proudly sponsored by the following businesses

Some of Our Events

Project Workshop Day	Competitions	Project Knowledge Bowls
B-BOP (Animal Overnight)	County Fair	Residential Camp
Summer Day Camps	State Fair	
Regional	Share the Fun (group performance)	

Some of Our Projects

Aerospace	Crafts & Fine Arts	Veterinary Science	Drones
Clothing & Textiles	Engineering Design	Leadership	Shooting Sports & Wildlife
Dog Training	Photography	Animal Science	Indoor Gardening

Rush City Car/Truck Wash

"VOTED BEST CAR WASH IN OUR AREA"

We are featuring a Touch-free wash Est. in 1976

North on Fairfield Avenue, Rush City, MN 320-358-3828

Call for discount offers.

DALE'S HEATING & APPLIANCE

Est. 2002

When it comes to heating and air conditioning systems, we're your solution.

815 Main St. S., Pine City

Call Us Today! 320-629-3531

dalesheatingandappliance.com

Like us on:

Amy Lamb

763-333-4490

Houses & Horses are my two passions!

amylambrealtor@outlook.com

EMBRACE ORTHODONTICS

Schedule a FREE consultation today to see how Invisalign® or braces could transform your smile!

embracemn.com

763.689.3134

Cambridge, MN | Lindstrom, MN | Pine City, MN

EST 2003

SOUTH MAIN DENTAL

FAMILY DENTISTRY

Melissa J. Pierson D.D.S.
Adon E. Crook D.D.S.

538 S MAIN ST, SUITE 130
CAMBRIDGE

763-552-1616

Office@MyCambridgeDentist.com
www.MyCambridgeDentist.com

Mickman Brothers

Christmas Wreath Fundraisers

Online & In Person Fundraising

An Official 4-H Partner

763-434-4047

HolidayFundraiser.com

CREATING SMILES FOR A LIFETIME!

CAMBRIDGE DENTAL CENTER

Now Accepting New Patients
SERVING CAMBRIDGE SINCE 1970

- ✓ PREVENTIVE & RESTORATIVE DENTISTRY
- ✓ COSMETIC & LASER DENTISTRY
- ✓ NOW OFFERING INVISALIGN & BOTOX
- ✓ CEREC® SAME DAY CROWNS
- ✓ 3D GUIDED DENTAL IMPLANTS

763-689-1554

DR. LUISA CISNEROS, DDS
DR. ALEX CISNEROS, DDS
DR. BRIAN CHRISTENSEN, DDS
DR. MATTHEW J. PETERSON, DDS, PA

CAMBRIDGE DENTAL CENTER, 135 OPPORTUNITY BLVD S CAMBRIDGE, MN 55008

ACJ CONSTRUCTION, LLC

Landscaping & Outdoor Construction

Now scheduling for the 2026 season!

Mention this ad for 10% OFF

763-587-8107

www.acjconstructionllc.com

Landscaping • Snow Removal
Property Maintenance

ANDERSON & KOCH

North Branch, MN

651-674-4465

DEAN'S

Heating & Air Conditioning

Call Dean's today to schedule an appointment

763-444-3517

DeansHeatingandAC.com

Talking winter skin health with University of Minnesota

The winter months bring fun activities for those willing to brave the outdoors, but time outside in the dry and cold air can be harsh on our skin. David Pearson, MD, FAAD, with the University of Minnesota Medical School and M Health Fairview talks about how to keep your skin healthy during the winter.

Q: What unique challenges does our skin face in the winter?

Dr. Pearson: Our skin is our interface with the environment. As temperatures and humidity levels drop, one of the first places we experience this is on our skin — particularly in places like Minnesota, where it gets very cold and dry. Unsurprisingly, a number of studies show that skin and fingernail moisture content is much lower during the winter months. When our skin dries out, its barrier function is compromised and we become more susceptible to external allergens, irritants and even infections. The effects of cold can range from being a nuisance to quite dangerous. Frostbite can occur when the skin temperature gets to 28 F — this only takes about 30 minutes when the thermometer reads 0 F. Our skin isn't physiologically equipped for unprotected, prolonged exposure to these temperatures, so be sure to wear warm coats, hats and gloves when you're going outside.



Q: What common skin issues do you see during the winter?

Dr. Pearson: We see lots of dry skin, even incidentally, in people who come in for other skin concerns. Winter is often a more difficult time for people with eczema — especially on their hands. Winter itch is a common rash resulting from excessive dryness that resembles a dried-up riverbed, with red, itchy, cracked skin. This is most common on the legs and usually spares body folds and the face, and we treat it with moisturizers and sometimes prescription topical anti-inflammatory medications. We also see many irritant reactions, such as frequent tissue use during respiratory virus season or rashes from licking your lips. I specialize in autoimmune connective tissue diseases and see a lot of Ray-

naud's and pernio (chilblains). Raynaud's is the rapid onset of white or blue discoloration of the fingers and/or toes from cold exposure due to constriction of blood vessels. Perno is the delayed onset of tender pink bumps on the fingers and toes one to two days after cold exposure.

Q: What are your go-to recommendations for those suffering from dry winter skin?

Dr. Pearson: Moisturize, moisturize, moisturize! It's pretty intuitive, but it bears repeating. The environment treats our skin differently in the winter, and we may have to change our behaviors to acclimate. I recommend a thick moisturizing cream that you have to scoop out of a jar or squeeze out of a tube over those with a pump handle, which tend to be used for thinner

products, but these recommendations vary based on a person's skin type (e.g. oily versus dry). I don't like a lot of additives, perfumes or scents — keep it simple. Ceramides are a good ingredient to look for and may help restore the skin barrier, and hyaluronic acid helps to retain water. I also recommend a gentle soap that doesn't have perfumes or scents, as these can irritate the skin. Some data suggests humidifiers can be helpful in certain circumstances, but probably less so than moisturizers.

Q: Should people still wear sunscreen/SPF in the winter?

Dr. Pearson: In short, yes. Getting into a routine with sunscreen improves the consistency of use, so I often recommend working in a combined moisturizer/SPF product every day. The long answer is a little more nuanced. In Minnesota, our UV index — how much ultraviolet light reaches us — is pretty low in the winter. People's skin is usually covered up in the winter, but there's actually a fair amount of reflection of UV light from the snow. Prolonged exposure through outdoor activities (or long drives) can add up. If you're lucky enough to travel south or upwards in elevation, I would definitely recommend applying sunscreen like you would during the summer months.

Q: What are you doing to ad-

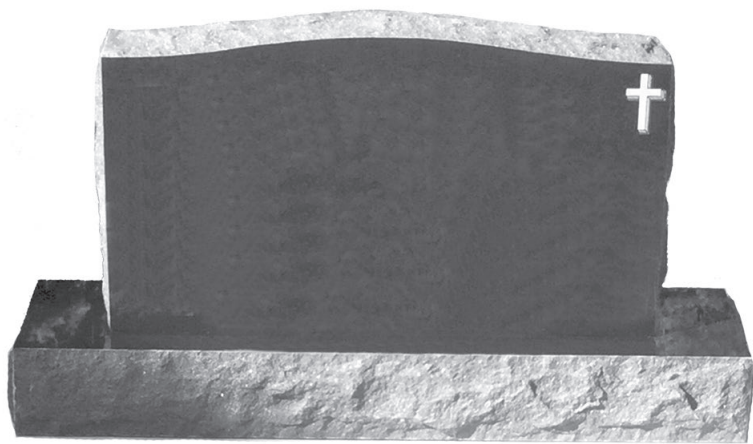
vance research in the dermatology field?

Dr. Pearson: As the director of the Autoimmune Connective Tissue Diseases Specialty Clinic, my interests are focused on lupus, dermatomyositis, scleroderma, morphea and vasculitis, among others. Our group is involved in several industry-sponsored clinical trials aimed at developing new and better therapies for these diseases, which currently have limited treatments and can be devastating to people who suffer from them. I'm particularly interested in the environmental triggers of these skin diseases and how to improve quality of life for people who suffer from them. Like many autoimmune diseases, the conditions I study are characterized by periods of both increased and decreased activity, and we still have a lot to learn about why and when flares will happen.

Dr. David Pearson is an associate professor of dermatology at the University of Minnesota Medical School, a dermatologist with M Health Fairview and the director of the Autoimmune Connective Tissue Diseases Specialty Clinic. His research interests include environmental triggers of autoimmune connective tissue diseases, effects on quality of life and development of novel therapies for these conditions.
- The University of Minnesota Medical School

INVENTORY REDUCTION SALE

We have an abundance of upright monuments!
WE'VE DECIDED TO DISCOUNT OUR PRICES!



20% OFF IN-STOCK UPRIGHT MONUMENTS

or 50% OFF a Concrete Foundation with the Purchase of a Flat Marker

GOOD FOR THE MONTH OF FEBRUARY

Stop by our showroom, give us a call, or check us out online.

Retail orders only, other restrictions may apply.



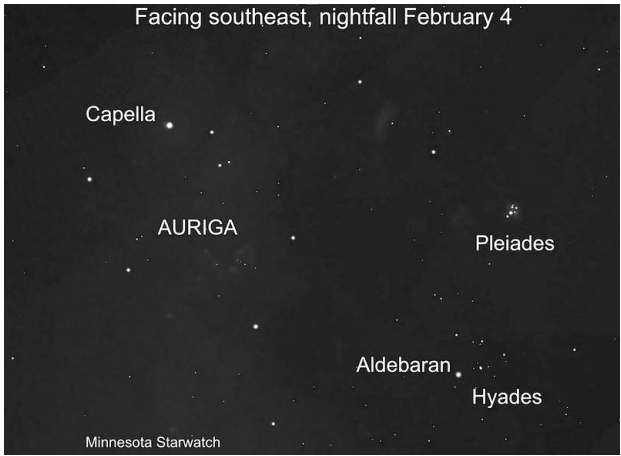
1-800-247-0748, 320-396-2938
Box 226 204 Main Ave. South, Braham, MN 55006
www.brahammonument.com

February Star Watch

February opens with the rising of a full moon close to sunset on the 1st. This won't be a supermoon, but it will be on the large side and almost perfectly round as it clears the eastern horizon.

As the moon wanes, it leaves more of the evening hours to the array of bright winter constellations and Jupiter, which outshines every star. All these objects will be up in the southeast to south at nightfall, including Sirius—the brightest of stars and the latest-rising member of the assembly.

Highest in the group is brilliant Capella, the beacon in the pentagon of stars that form the constellation Auriga, the charioteer. Through powerful telescopes, Capella resolves into four stars—two classified as yellow giant stars and two as red dwarfs. Next to Capella is a narrow isosceles triangle of stars. The two smaller ones, called the Kids, represent young goats



held by the charioteer. From anywhere above latitude 44 degrees north, Capella is high enough in the sky to be a circumpolar star, like Polaris and the stars of the Big and Little Dippers. That is, it never sets, but continually circles the point in the sky directly over the North Pole. Seen from Minnesota, it's sort of a borderline case, as the lower part of its path "scrapes the horizon." West of Auriga, look for the Pleiades star cluster, which marks the shoulder of Taurus, the bull. Below the Pleiades

is the V-shaped Hyades cluster, which outlines the face of Taurus. The bull's eye is Aldebaran, a giant star unrelated to the Hyades. Aldebaran's name comes from the Arabic for "the follower," because it appears to follow the Pleiades across the night sky. This year February is what's sometimes called a perfect month: one that starts on a Sunday and ends on a Saturday. Of course, February is the only month that can perform this feat. - The University of Minnesota

Minnesota DNR urges snowmobile riders to prioritize safety

In areas with rideable snow, snowmobiling is a common activity on Minnesota's trails, frozen lakes, and road ditches. The Minnesota Department of Natural Resources reminds riders to be safe when they head out.

Small amounts of snow hiding dangerous obstructions, and pressure ridges or areas of thin ice can be particularly troublesome for riders who aren't keenly aware of their surroundings.

"Snowmobiling is a great way to enjoy the winter, and we're seeing lots of people taking advantage of the opportunities that exist right now," said Capt. Jon Paurus, DNR Enforcement education program coordinator. "We're just reminding everyone to brush up on the basics of snowmobile safety before they start their sleds."

The following tips can help ensure a safe ride: Know where you can ride. Riders who stay on marked trails are less likely to strike an obstacle or trespass onto private property. Riders should also check trail conditions (mndnr.gov/snow_depth) before heading out.

Avoid alcohol before and during a ride. Drinking plays a role in about 60% of fatal snowmobile crashes. Watch your speed. Going too fast is another main factor in crashes. Many serious and fatal crashes occur when a speeding snowmobiler loses control or strikes an object.

Ride on the right. This is an important factor in helping prevent head-on crashes on trails. Be careful on the ice. Obstacles such as pressure ridges have been common this year. Also, be aware of ice thickness — there must be at least 5 to 7 inches of new, clear ice to support the weight of a snowmobile and rider.

Take a snowmobile safety course. It's required for anyone born after 1976 and recommended for everyone. People with a snowmobile safety certification (mndnr.gov/safety/vehicle/snowmobile) are less likely to be involved in serious or fatal crashes. The DNR has more safety tips on its snowmobiling safety webpage (mndnr.gov/snowmobiling/safety.html) and its ice safety webpage (mndnr.gov/safety/ice/index.html). - MN DNR

The Star is now on Instagram!
@isantichisagocountystar

See what's happening today!

Read Local

Keep up with your community!

ISANTI-CHISAGO

COUNTY STAR

930 South Cleveland,
Cambridge, MN 55008
763-689-1181

NEED A TREE DROPPED BUT,
NOT HAULED? SAVE BIG \$\$\$

Tree Removal / Trimming • Stump Grinding

Limb Removal • Emergency Service • Full Service Haul Away

MATT'S

TREE SERVICE

Certified Arborist • Owner Operated • Locally owned

Bonded, Insured and Licensed • 30+ years of experience

mattstreeservice.us

Call Now

612-706-8210

Must mention this ad to receive a 5% discount
through the end of March

Moraloppet this weekend, Vasaloppet next

BY HOPE MURRAY
EDITOR@MORAMINN.COM

The Moraloppet, the annual fund-raising event benefiting the Tom Giese Skier Development Fund, will be held this Saturday, Jan. 31 at the Nordic Center.

The event starts at 10:30 a.m. and will feature three distance options: 20km, 10km, and 5km tour.

Dala horse trophies will be handed out for the top male and female finishers in the 10km and 20km races.

Prizes will be given for second- and third-place male and female finishers in the 10km and 20km races.

A 5km ski tour option, fun for all levels, will also be part of the event. The tour option is an untimed event.

Skiers of all capabilities ranging from beginners to elite athletes take part

in the Moraloppet, which organizers call “a great opportunity to explore the trails at the Nordic Center in preparation for the upcoming Vasaloppet ski races the following week.”

Tom Giese Skier Development Fund was formed after the death of its namesake in August 2021. Giese’s family established the fund as a way to keep his legacy alive. The fund supports local skiers by offsetting the costs of the sport. Giese was active as a parent and as a coach of skiers.

The Tom Giese Skier Development Fund was created under the umbrella of Vasaloppet USA, as it is already developed as a non-profit.

VASALOPPET

Cross country skiers will flock to Mora next weekend for the annual Vasaloppet USA ski races. Eight races

for a variety of skill levels will be spread across two days.

This year, skiers will be happy to note that the start and finish of all the races will take place in downtown Mora. Last year’s event bypassed the Union Street location — where starts and finishes have been held since 2016 — and moved to the Vasaloppet Nordic Center, due to lack of snow.

OTHER EVENTS

As in previous years, the Vasaloppet will have a few extra side events.

- Vasaloppet Bingo is again set to be played at Kev’s Depot. The fundraiser will be at 6:30 p.m., Wednesday, Feb. 4.
- The Mora Area Youth Recreation Associations That’s Italian Pasta Dinner will be from 4:30 to 7 p.m. on Friday, Feb 6, at Kev’s Depot. A delicious pasta dinner will be served with

proceeds helping to fund local youth sports activities.

- The Vasa Radio Hour, a contemporary radio variety show, will be at 7 p.m., Saturday, Feb. 7, at the Paradise Theatre. A story on the event is on page 1 of the Times this week.

- The annual Vasaloppet Art Show will begin on Friday and continue through the weekend in the basement of the Mora Library. Visitors are encouraged to check out the works of local artist on display.

- The Masons’ Swedish Pancake Breakfast will be from 8 a.m. to noon, Saturday and Sunday. Stop into the Mora Masonic Lodge for a delicious Swedish pancake breakfast!

For a complete schedule of Vasaloppet events, see this week’s Kanabek County Times.

W O R S H I P *guide*

Baptist		Lutheran		Joy Lutheran Church (Missouri Synod)		St. John Lutheran Church (Missouri Synod)		Non-Denominational
First Baptist Church 304 S. Main St., Cambridge, 763-689-1173. Call the church office or visit our website for current service times and programs. firstbaptistcambridge.org	Sunday School for All Ages (school year only): 9-10 a.m. Sunday Worship (in person & online): 10:30-11:30 a.m. Wednesday Programming (school year only): Family meal at 5:30 p.m. with AWANA and Youth Group from 6:30-8 p.m.	Braham Evangelical Lutheran Church (ELCA) Dr. Suzanne Begin, Minister 905 Central Drive West 320-396-2755 www.brahamlutheran.org 9:30 a.m. Worship Service In-person & Live on Facebook 9:00 - 9:45 Sunday School Children may join worship service or be picked up by an adult All Are Welcome!	Joy Lutheran Church (Missouri Synod) 33525 Jefferson Street NE, Cambridge 763-689-4355 www.joylutheran.net Pastor James Ritter 8:30 a.m. Traditional Service 10:30 a.m. Contemporary Service	St. John's Lutheran Church (Missouri Synod) 28168 Jodrell St. NE, North Branch Located 6 mi. E. of Isanti on Co. Rd. 5; (or 7 mi. W. of North Branch on Co. Rd. 5); then 1-1/2 mi. S. on Co. Rd. 12. 763-444-5988, Paul Anderson, Pastor; Sunday 9am Worship; 10:20am Adult Bible Study; Thursday 6:30pm Bible study. Email: stjohnlutheran@att.net	Grace Gospel Church 37126 MN-65, Stanchfield, MN 55080 763-308-5618 Coffee fellowship: 9:45am Service: 10:00am Pastor: Tim Miller www.gracegospelmn.org info@gracegospelchurchmn.com Located just north of Grandy on 65, across from East Central Diesel, with three large crosses near the road. We look forward to having you!			
North Isanti Baptist Church Lead Pastor: Travis Blake 2248 313th Ave. NE, Cambridge, MN 55008. www.nibchurch.com Email: nibchurch@msn.com 763-689-3576. 8:30am Worship Service (traditional style) 10:45am Worship Service (contemporary style)	Evangelical Free Dale Evangelical Free Church 45268 Brunswick Rd, Harris, MN 763-689-5817 Pastor/Teacher Dr. Harvey Martin. Sunday School – all ages 9am. Sunday Service 10:25am. www.daleefc.com	Calvary Evangelical Lutheran Church Of Rush Point (ELCA) Pastor Vicki Vandervegt. 320-358-4829, 600 Rush Point Dr. 10:30am Worship with Fellowship following my.calvaryofrushpoint.org. Office: calvaryrushpoint@gmail.com	Living Branch Lutheran Church (LCMS) 6486 Elm St (PO Box 335), North Branch 651-674-5576 Pastor Glen Kleppe Sunday Worship 10am Sunday School 9am Sunday Adult Bible Study 9am www.livingbranch.org email: office@livingbranch.org	St. John's Lutheran Church (Missouri Synod) 980 West 4th Street, Rush City 320-358-3623 Sunday 8:45am Worship Monday 10am Longer Look Bible Study stjohnsrushcity.org	Journey of Faith Bible based worship. 651-600-9878. faiththroughaction777@gmail.com Sunday fellowship 9am Worship & Youth Ministry 10am Come as you are. All welcome. Junction Bowl. 123 Cajima Street, NE, Isanti. Refreshments served.			
Sunrise Bible Church 41300 Second St., North Branch, Pastor David Stertz. Sunday school for all ages 9:30am, Sunday morning Worship 10:30am, Sunday evening 6pm, Wed. Kids 4 Truth & Bible studies for all ages 6:30pm. More info at sunrisebiblechurch.org or 651-674-4107.	Kost Evangelical Free Church 37405 Kost Trail, North Branch, MN – Jct. of CR 11 & CR 72 651-583-3281 • Kostchurch.org Pastor Josh Jensen Sunday worship service 9:30 am followed by fellowship & Sunday School Youth group Wednesdays 7 pm Respawn Gaming Ministry for teen boys – 2 Fridays per month.	Cambridge Lutheran Church (ELCA) 621 Old North Main Street, Cambridge 763-689-1211 Traditional service: 8:30 a.m. Contemp service: 9:15 & 10:30 a.m. KidZone 9:15 & 10:30 a.m. www.cambridgelutheran.org Facebook: fb.com/Cambridgelutheran YouTube: tinyurl.com/Cambridgelutheran	Long Lake Lutheran Church (ELCA) 3921 277th Ave NW Isanti, MN 55040 763-444-5315 Pastor Sue Olson & Pastor Rebecca Holland All Are Welcome! Sundays 9 am Worship & 10 am Sunday School Holy Communion: 1st and 3rd Sundays Wednesdays 6 pm Confirmation	St. Stephen's Lutheran Church (Missouri Synod) 400 SE 8th St., (Isanti #4 E.), PO Box 37, Braham 320-396-3103 9:30am Sunday School & Adult Bible Study. 10:30am Worship. ststephensbraham.org	JustPassinthru IHS Ministries Becoming Agape – Allowing the Holy Spirit to transform lives 763-228-0883 Meeting at Crossroads Commons 1001 1st Ave. E., Suite 100, Cambridge MN justpassinihs@gmail.com Justpassinthru.net Pastor Tom Bakke Sunday mornings at 10 am Sunday nights and Wednesdays			
Catholic	Oxlip Evangelical Free Church 29237 Roanoke St NW, Isanti (1 mile West of Cty 5 and Hwy 47) 763-444-5134 oxlip.org 9am Worship Service 10:45am Christian Education Awana children's ministry Wednesdays 6 to 7:30pm	Christ Ev. Lutheran Church (WELS) 32962 Vickers St. NE, Cambridge, 763-689-5333 Pastor Samuel L. Biebert. Sunday Worship 9am, Sunday School/ Bible Class 10:30am www.christcambridge.com	Salem Lutheran Church 4638 381st Ave. NW, Dalbo, MN 55017. 763-689-1687 Join us for worship every Sunday at 10:30 Sunday School 11:00 resuming in the Fall Coffee fellowship after worship www.salemlutherandalbo.com	Trinity Lutheran Church (ELCA) 38460 Lincoln Trail, North Branch 651-674-7047 Pastor Paul Cannon In person and online worship 8 & 10 am Worship 9 am Coffee Hour 9 am Sunday School www.trinitynorthbranch.org office@trinitynorthbranch.org	Pentecostal			
Christ the King 305 Fern Street N Cambridge, MN 55008 763-689-1221 Friday 8:30am Saturday 4pm email brigitte@isantiacc.org Website: isantiacc.org	Wyanett Evangelical Free Church 12 Miles West of Cambridge on Hwy 95 www.wyanettevangelicalfree.org Pastor Bruce Talso 763-221-4469 Sunday School 9:30 am Morning Worship 10:30 am Mondays - Women's Evening Bible Study 6:00 pm Tuesdays - Men's Bible Study 5:00 pm Wednesdays - Midweek Bible Study/ Prayer 2:00 pm Thursdays - Women's Morning Bible Study 9:30 a.m. at Heart Matters Ministry, 403 1st St. Princeton A LOVING CHURCH PROCLAIMING A LIVING MESSAGE!	First Lutheran Church (ELCA) 43779 Gates Ave., Harris. 651-674-4498. Handicapped accessible. Pastor Vicki VanderVegt Sunday Worship 9:20am Coffee & fellowship following service Email: firstlutheran@q.com www.firstlutheranharris.org	Spring Lake Lutheran Church (ELCA) 8440 Erickson Road, PO Box 958, North Branch, MN 55056 (9 mi. E. of Cambridge on Hwy. 95, North one block on Erickson Road). 651-674-4606. Pastor Vicki VanderVegt.slchurch.org Email: slchurch@gmail.com 8:15am Worship with fellowship following	Common Ground - A United Methodist Community 404 Cypress St. North, Cambridge. 763-689-2071. Pastors Amelia & Andrew Buschena. Sunday 9:30am Worship. Livestream of services and more info at commongroundumc.org. Everyone Counts!	The Journey New Life Church 601 Heritage Blvd NE, Isanti Pastor David L. Willis. Sunday 10am Worship & the Word & Kids' Church. Sunday 6pm Family Worship. Wednesday 7pm Family Breakout Classes. 763-689-4471 Thejourneynlc.org			
St. Elizabeth Ann Seton 207 Whiskey Rd NW, Isanti, MN. 763-444-4035 Email: brigitte@isantiacc.org Mass: Tues. & Wed. 8:30am. Sun. 8:30am. isantiaac.org								
Evangelical Covenant								
Karmel Covenant Church 5799 County Road 6, Princeton MN 763-389-3169 Lead Pastor: Jason Hovis Pastor of Youth: Kohl Hanson								

This directory is paid for and made possible by the participating churches listed. Proud to sponsor and salute our local churches

This directory is paid for and made possible by the participating churches listed. Proud to sponsor and salute our local churches



MINNESOTA
EQUIPMENT

**JOHN DEERE**

Hwy. 65 N, Isanti, MN
www.MinnesotaEquipment.com

763-444-8873



763-689-3360

Specialists In Auto Collision Repair



Since 1978

1-320-358-4211
875 So. Bremer Ave., Rush City

To Advertise in this Spot, Contact:

Kellie Champion
Classified Ad Consultant
651-407-1237
Email: sales@countystar.com

NOTICES

PUBLIC NOTICE:
The warranty deed recorded on June 23, 1971, for Lot 17, Block 2, Goldenwood, also known as 2940 Ivy Street South, Cambridge, Minnesota, was never executed by the named grantors and no lawful conveyance ever occurred. Because the deed was unsigned, no party ever acquired title, no valid mortgage was ever created, and all actions based on that defective instrument, including any foreclosure or sheriff's sale, are void. The only lawful execution of the original deed occurred on October 10, 2023, and the property was transferred into the LeRoy Family Private Land Trust on October 31, 2023. No other person or entity has authority to sell, transfer, convey, or encumber this property, and any attempted action by an unauthorized party is void. This notice is provided to clarify the record and confirm that all actions based on the unsigned 1971 instrument are void and without legal effect. Devin M. LeRoy, Successor Trustee and Legal Title Holder, LeRoy Family Private Land Trust.
Published in the Isanti-Chisago County STAR on January 22, 29, 2026

PUBLIC NOTICE
Notice is hereby given that the undersigned will sell at a Public Auction on
February 3, 2026 at 10:00 am at: The Storehouse 37200 Highway 65 Grandy, MN 55029
The personal property heretofore with the undersigned by:
Unit # **112**
Martin "Marty" John Mulvany
23226 Yucca St. NW
St. Francis, MN 55070-9795
Published in the STAR
1/22/26 & 1/29/26
Published in the Isanti-Chisago County STAR on January 22, 29, 2026

SUMMARY PUBLICATION OF THE PROCEEDINGS OF THE CAMBRIDGE CITY COUNCIL REGULAR MEETING – JANUARY 20, 2026
The complete minutes are available for public inspection at the office of the City Administrator, 300 3rd Ave. NE, Cambridge, Minnesota.
Members Present: Mayor James Godfrey; Councilmembers Aaron Berg, Bob Shogren, Molly Christian, and Mark Ziebarth.
• Called meeting to order at 6:00 pm
• Approved consent agenda items A-F
• Held a 2026 Visioning Session
• Discussed City Building Maintenance
• Discussed the ICPOET Grant process
• Approved Resolution R26-005 Approving a Variance for a driveway at 523 1st Ave W
• Approved Resolution R26-002 Approving a Preliminary Plat for Benk Retail Addition Phase 2
• Approved Resolution R26-003 Approving a Final Plat for Benk Retail Addition Phase 2
• Reviewed Planning Commission Applicants and Appointed Three Seats
• Reviewed Parks, Trails, and Recreation Commission Applicants

ISANTI COUNTY COURT REPORT

The following felony charges were filed in Isanti County Court on Jan. 18 - 24. All individuals are presumed innocent until proven guilty.

Aaron Michael McNamara (DOB 01/21/1992) of Minneapolis, was charged Jan. 20 with Theft-Take/Drive Motor Vehicle-No Owner Consent.
Jesse Lee Satter (DOB 03/09/1981) of Anoka, was charged with Threats of Violence -Reckless Disregard Risk.

CHISAGO COUNTY COURT REPORT

The following felony charges were filed in Chisago County Court on Jan. 18 - 24. All individuals are presumed innocent until proven guilty.

Andrew Edward Scherff (DOB 08/25/1982) of Blaine, was charged Jan. 22 with one count of Possess Ammo/Any Firearm - Conviction or Adjudicated Delinquent for Crime of Violence; and one count of Burglary - 3rd Degree - Enters w/out consent with intent to Steal/Commit Felony or Gross Misdemeanor.
Jaidyn Wayne Langley (DOB 02/26/2003) of Stillwater, was charged Jan. 22 with one count of Assault-3rd Degree-Substantial Bodily Harm; one count of Assault-4th Deg-Correctional Employee; Probation Officer; Prosecutor; or Judge; and one count of Assault-4th Deg-Correctional Employee; Probation Officer; Prosecutor; or Judge.

and Appointed Two Seats
• Approved BNSF Crossing Surface Agreement
Published in the Isanti-Chisago County STAR on January 29, 2026

FORECLOSURES

NOTICE OF MORTGAGE FORECLOSURE SALE
State of Minnesota, County of Isanti, Tenth Judicial District, Civil No. 30-CV-25-756, First National Bank, Plaintiff vs. Dylan Investments LLC; D.B. Graphics, Inc.; Dennis George Buchana; Tammy Jane Buchanan; Platinum Bank; and John Doe, Mary Roe, and XYZ Corporation, whose correct names are unknown to Plaintiff, Defendants.
NOTICE IS HEREBY GIVEN that under and by virtue of the Findings of Fact, Conclusions of Law, and Order for Judgment dated December 15, 2025, and entered December 19, 2025, in the above-cited action, a certified copy of which has been delivered directing the sale of the premises hereinafter described to satisfy the amount found and adjudged due to said Plaintiff in the above- cited action from said Defendants, the Sheriff of Pipestone County will sell at public auction to the highest bidder for cash, the premises described in said Judgment to pay the debt secured by the following described mortgage:
DATE OF MORTGAGE: May 26, 2021

ORIGINAL PRINCIPAL AMOUNT OF MORTGAGE: \$709,000.00 MORTGAGOR(S): Dylan Investments LLC, a Minnesota limited liability company MORTGAGEE: First National Bank
DATE AND PLACE OF RECORDING:
Recorded on May 27, 2021, as Document Number A504965 in the Office of the County Recorder of Isanti County, Minnesota.
COUNTY IN WHICH PROPERTY IS LOCATED: Isanti
Common Street Address(es): 801 Highway 65 NE, Isanti, MN 55040 Tax Parcel ID No: 16.020.1100
LEGAL DESCRIPTION OF PROPERTY:
That part of the Southeast Quarter of the Southwest Quarter (SE1/4 of SW1/4) of Section Twenty (20), Township Thirty-five (35), Range Twenty-three (23), described by metes and bounds as follows: Commencing at the Southeast corner of the SE1/4 of SW1/4 of Section 20, Township 35, Range 23, thence north along the north and south quarter line a distance of 440 feet; thence west and parallel with the south line of said SE1/4 of SW1/4 a distance of 600 feet; thence south and parallel with the east line of said SE1/4 of SW1/4 a distance of 440 feet to the South line of SE1/4 of SW1/4; thence east along the south line of said SE1/4 of SW1/4 a distance of 600 feet to the point of commencement, subject to highway easements of record and mineral reservations of record, Isanti County, Minnesota.
AMOUNT DUE UNDER JUDGMENT: As December 19, 2025, the amount due under the Judgment entered in the above-cited action on December 19, 2025, is no less than \$673,009.81, consisting of the judgment amount of \$673,009.81 plus interest accrued and accruing

at a rate of \$69.11 per day since October 21, 2025, together with accrued and accruing fees and costs and the costs and expenses of sale.
PURSUANT the said judgment, the above-described property will be sold by sheriff of said county as follows:
DATE AND TIME OF SALE: March 5, 2026, at 10 AM
PLACE OF SALE: Isanti County Sheriff's Office, 2440 Main Street S., Cambridge, MN 55008 to pay the debt by said mortgage and taxes, if any, on said premises and the costs and disbursements, including attorneys' fees allowed by law, subject to redemption within six months from the date of said sale by the mortgagor(s), their personal representatives or assigns.
THIS COMMUNICATION IS FROM A DEBT COLLECTOR ATTEMPTING TO COLLECT A DEBT. ANY INFORMATION OBTAINED WILL BE USED FOR THAT PURPOSE. THE RIGHT TO VERIFICATION OF THE DEBT AND IDENTITY OF THE ORIGINAL CREDITOR WITHIN THE TIME PROVIDED BY LAW IS NOT AFFECTED BY THIS ACTION.
DATED: January 20, 2026 MORTGAGEE: First National Bank DeWitt LLP
By: /s/ Zachary P. Armstrong Name: Zachary P. Armstrong Attorneys for Plaintiff/Mortgagee 901 Marquette Avenue, Suite 2100 Minneapolis, MN 55402 (612) 305-1400
Published in the Isanti-Chisago County STAR on January 22, 29, February 5, 12, 19, 26, 2026

ASSUMED NAME
OFFICE OF THE MINNESOTA SECRETARY OF STATE CERTIFICATE OF ASSUMED NAME
Minnesota Statutes, Chapter 333
The filing of an assumed name does not provide a user with exclusive rights to that name. The filing is required for consumer protection in order to enable customers to be able to identify the true owner of a business.
ASSUMED NAME: **Knot Just Pine MN**
PRINCIPAL PLACE OF BUSINESS: **1272 340th Ct. NW, Cambridge, MN 55008**
APPLICANT(S):
Name: **Jeff Olson and Dawn Olson**
Address: **1272 340th Ct. NW, Cambridge, MN 55008**
If you submit an attachment, it will be incorporated into this document. If the attachment conflicts with the information specifically set forth in this document, this document supersedes the data referenced in the attachment.
By typing my name, I, the undersigned, certify that I am signing this document as the person whose signature is required, or as agent of the person(s) whose signature would be required who has authorized me to sign this document on his/ her behalf, or in both capacities. I further certify that I have completed all required fields, and that the information in this document is true and correct and in compliance with the applicable chapter of Minnesota Statutes. I

understand that by signing this document I am subject to the penalties of perjury as set forth in Section 609.48 as if I had signed this document under oath.
SIGNED BY: Jeff Olson
MAILING ADDRESS: 1272 340th Ct. NW, Cambridge, MN 55008
EMAIL FOR OFFICIAL NOTICES: Knot.Just.Pine.MN@gmail.com
Work Item **1621970600030**
Original File Number **1621970600030**
STATE OF MINNESOTA OFFICE OF THE SECRETARY OF STATE FILED 1/16/2026 11:59 PM
Published in the Isanti-Chisago County STAR on January 29; February 5, 2026

PROBATE

STATE OF MINNESOTA COUNTY OF: ISANTI JUDICIAL DISTRICT: 10TH DISTRICT COURT
Court File Number: 13-PR-26-11
Case Type: Probate
In Re the Estate of Richard Alan LaValle Decedent (Deceased Person)
Notice and Order for Hearing on Petition for Formal Adjudication of Intestacy, Determination of Heirship, and Appointment of Personal Representative and Notice to Creditors
It is ordered and notice is given that a hearing will be held as follows:
Date: March 19, 2026 Time: 2:00 p.m.
Location: 313 North Main St. Center City, MN 55012 -via zoom for the formal adjudication of intestacy and determination of heirship of the Decedent, and for the appointment of:
Name: Robert J. Ryan
Address:23800 Pickett Ave, N Scandia, MN 55073
as Personal Representative of the Estate of the Decedent in: an unsupervised administration.
Any objections to the petition should be filed with the Court before, or raised at, the hearing.
If proper and if no objections are filed or raised, the personal representative will be appointed with full power to administer the Estate including the power to collect all assets; to pay all legal debts, claims, taxes, and expenses; to sell real and personal property; and to do all necessary acts for the Estate.
Notice is also given that (subject to Minn. Stat. § 524.3-801) all creditors having claims against the Estate are required to present the claims to the personal representative or to the Court Administrator within four months after the date of this Notice or the claims will be barred.
Date:
BY THE COURT: Catherine Trevino (Judge)
District Court Judge OR Court Administrator
Attorney for Personal Representative: Name: Kirsten J. Libby
Firm: Libby Law Office, P.A
Address: 855 Rice St, STE. 100 St. Paul, MN 55117
Attorney License No.: 0326227 Telephone: 651-487-1208
Email: kirsten@libbylawoffice.com
Published in the Isanti-Chisago County STAR on January 29; February 5, 2026

SCHOOL BOARD

SUMMARY PUBLICATION OF THE PROCEEDINGS OF THE CAMBRIDGE-ISANTI SCHOOLS BOARD OF EDUCATION.
Complete minutes are available for public inspection at the District Office (625 Main St N., Cambridge, MN) or at www.c-ischools.org.
Regular School Board Meeting – December 18, 2025
With Chair Heidi Sprandel, Vice Chair DeEtta Moos (present until at 7:05 p.m.), Clerk Mark Solberg, and Directors Kevin Gross, Brette Halverson, and Becky Roby; and Ex Officio, Superintendent Dr. Nate Rudolph. Absent: Treasurer Nikki Johnson
• Chair Sprandel called the meeting to order at 6:00 p.m.
• Motion to approve the revised meeting agenda was made by Moos, seconded by Roby. Motion carried.
• Motion to adjourn the public hearing for Truth in Taxation made by Solberg, seconded by Gross. Motion carried.
• Motion to approve the consent agenda made by Gross, seconded by Halverson. Motion carried.
• Motion to approve the treasurer's report subject to audit made by Solberg, seconded by Halverson. Motion carried.
• Motion to adopt the resolution to accept gifts, grants or devise of real or personal property made by Roby, seconded by Sprandel. Roll Call Vote: Roby, yes; Johnson, absent; Moos, absent; Sprandel, yes; Solberg, yes; Gross, yes; Halverson, yes. Whereupon said resolution was declared duly passed and adopted.
• Motion to approve the Final 2025 Payable 2026 Property Tax Levy made by Gross, seconded by Solberg. Motion carried.
• Motion to approve the 2026-2027 Cambridge-Isanti High School Course Guide made by Halverson, seconded by Gross. Motion carried, with one dissenting vote.
• Motion to approve the 2026 Truancy Contract between C-I Schools and Isanti County Family Services made by Solberg, seconded by Roby. Motion carried.
• Motion to approve the 2026 Chemical Health Services Contract between C-I Schools and Isanti County Family Services made by Gross, seconded by Halverson. Motion carried.
• Motion to approve the 2025-2027 Administrative Assistant Contract made by Roby, seconded by Gross. Motion carried.
• Motion to approve the 2025-2027 Food Service Employees collective bargaining agreement made by Solberg, seconded by Halverson. Motion carried.
• Motion to approve Policy 501, 520, 534, 621, and 723 as presented made by Gross, seconded by Roby. Motion carried.
• Motion to adjourn meeting at 7:58 PM made by Gross, seconded by Sprandel. Motion carried.
Published in the Isanti-Chisago County STAR on January 29, 2026

SUMMARY PUBLICATION OF THE PROCEEDINGS OF THE CAMBRIDGE-ISANTI SCHOOLS BOARD OF EDUCATION
Complete minutes are available for public inspection at the District Office (625 Main St N., Cambridge, MN) or at www.c-ischools.org.


Organizational School Board Meeting – January 5, 2026
With Chair Heidi Sprandel, Vice Chair DeEtta Moos, Clerk Mark Solberg, Treasurer Nikki Johnson, and Directors Kevin Gross and Brette Halverson; and Ex Officio, Superintendent Dr. Nate Rudolph. Absent: Director Becky Roby
• Chair Sprandel called the meeting to order at 5:30 p.m.
• Motion to approve the meeting agenda was made by Nikki Johnson, seconded by Kevin Gross. Motion carried.
• Motion to elect Heidi Sprandel as Board Chair was made by Mark Solberg. Motion carried by acclamation.
• Motion to elect DeEtta Moos as Board Vice Chair was made by Nikki Johnson. Motion carried by acclamation.
• Motion to elect Mark Solberg as Board Clerk was made by DeEtta Moos. Motion carried by acclamation.
• Motion to elect Nikki Johnson as Board Treasurer was made by Mark Solberg. Motion carried by acclamation.
• Motion to approve the designated time and place for Regular Board Meetings & Study Sessions for 2026 was made by DeEtta Moos, seconded by Nikki Johnson. Motion carried.
• Motion to approve Policy 203.7 – School Board Compensation as is was made by Kevin Gross, seconded by Mark Solberg. Motion carried.
• Motion to approve Squires, Waldspurger, & Mace P.A. as the School District Attorney for 2026 was made by Nikki Johnson, seconded by Heidi Sprandel. Motion carried.
• Motion to approve the Isanti-Chisago County Star as the Official Newspaper for 2026 was made by DeEtta Moos, seconded by Brette Halverson. Motion carried.
• Motion to approve First Bank & Trust as the Designated Official Depository for 2026 was made by Mark Solberg, seconded by Kevin Gross. Motion carried.
• Motion to approve the Authority with Official Depositories as listed for 2026 was made by Nikki Johnson, seconded by DeEtta Moos. Motion carried.
• Motion to adopt Resolution Authorizing Use of Facsimile Signatures for 2026 was made by Brette Halverson, seconded by Nikki Johnson. Motion carried.
• Motion to adopt Resolution Authorizing Superintendent/Director of Finance and Operations to Sign Purchase Agreements for 2026 was made by Kevin Gross, seconded by DeEtta Moos. Motion carried.
• Motion to adopt Resolution Authorizing Administration to Develop Specifications to Solicit Bids for 2026 was made by Mark Solberg, seconded by Brette Halverson. Motion carried.
• Motion to approve Policy 721 – Uniform Grant Guidance Policy Regarding Federal Revenue Sources as presented was made by Nikki Johnson, seconded by DeEtta Moos. Motion carried.
• Motion to adjourn the meeting at 5:52 PM was made by Kevin Gross, seconded by Nikki Johnson. Motion carried.
Published in the Isanti-Chisago County STAR on January 29, 2026



WE MEAN BUSINESS.

Talk to us about strategic local advertising solutions for your small business!

COUNTY STAR



MUST BOOK BY 3/31

Grand Alaskan Cruise & Tour

12 DAYS INSIDE CABIN STARTING AT \$3,549 \$3,299*

BASED ON JUL 8, 2026 DEPARTURE

- Marvel at Alaska's natural beauty in Denali National Park
- Visit Alaska's the Alaska Wildlife Conservation Center
- Cruise Glacier Bay and Wrangell St. Elias National Park
- Travel through the legendary Inside Passage

CALL US: 1-844-270-2455

*Per person based on double occupancy & includes tax service/gov't fees. Ask your Travel Consultant for terms & conditions. Add-on airfare with transfers available for most major gateways.

Strategic Farming: Let’s talk crops! session talks soil compaction

On Jan. 6, Jodi DeJong-Hughes, a UMN Extension educator that specializes in tillage, soil compaction and soil health joined UMN Extension crops educator Angie Peltier to talk about soil compaction: what causes it, how it impacts crop production and how to remediate compacted soil. This was the inaugural episode of the 2026 Strategic Farming: Let’s talk crops! webinar series.

A healthy soil is a well aggregated soil with good soil structure. Soil aggregates are sand, silt, and clay soil particles and organic matter held together by dead and living soil microbes and the sugary compounds that roots exude into the soil. The magic of aggregates is in the area that sur-

rounds and is between them called pore space. Pore spaces provide room for both water infiltration and gas/oxygen exchange, both of which are critical for plant growth and development. Any time we use a tillage implement in soil it breaks up the larger pores responsible for ~70% of water and air infiltration. Therefore, compacted soils with fewer pore spaces than would naturally occur, tend to be wetter soils. DeJong-Hughes summarized the importance of soil compaction to Minnesota farmers’ field operations, “As air warms almost 10,000 times faster than water, compacted soils tend to be slower to warm and dry than uncompacted soils.”

Compacted soil can limit a crop yield

potential by up to 60% by slowing the rate of photosynthesis, stunting plants both above- and below-ground and nutrient deficiencies and other stresses resulting from poor soil air and water infiltration.

Every time that we travel across a production field with a piece of equipment such as a combine, sprayer, or planter there is a compaction risk. This risk is heightened when soil is too wet and is not fit for such operations. Other factors that can increase compaction risk include poor soil structure, axle load (weight/axel), using greater than the recommended tire pressure, and the number of passes across the field.

The session discussed how to reduce the risk of soil compaction and pre-

serve soil pores such as making adjustments to one’s tillage regime. Says DeJong-Hughes, “I’m not telling you to go no- till or strip-till, to start, use your own equipment and try to make it less aggressive.”

The benefit to attending Strategic Farming webinars live is that the presenters answer audience questions. For those that missed this session, a recording is now available to watch at z.umn.edu/StrategicFarmingRecordings. For more information and to register to attend other weekly sessions through the end of March, visit <https://z.umn.edu/strategic-farming>. ~UofM Extension

CLASSIFIEDS & EMPLOYMENT

102

Services

Alterations and clothing repairs, 25 years experience. 320-396-4152 Contact Rosemary. Braham

CHIMNEY/ROOFING INSULATION SERVICES 612-845-0289 **WANTED FORD TRUCK 97-08 REPAIRABLE** 612-845-0289.

Designs by Jeff: Custom airbrushing, vehicle wraps, fleet graphics, signs, logo designs. Over 35 years of experience. DesignsByJeff.com 763-443-3135

115

Heating & Cooling

Central Boilers. Classic Edge Titanium HDX EPA certified OUTDOOR WOOD FURNACE. \$2,000 Tax Credit. Prices as low as \$230 per month! Call Rasmussen Construction Inc. 612-805-2362.

150

Help Wanted

ACCOUNTANT III - Plastech Corporation, Rush City, MN. 1st shift, Monday-Friday. Prepare, review, and publish monthly and year-end financial statements per GAAP. Handle day-to-day accounting operations, A/P and A/R questions. Requirements: Two-year accounting degree, two years experience in general ledger accounting and financial statement preparation. Pre-employment background check and drug screening required. \$27.00-\$29.00/hour. Apply at plastechcorporation.com or call/text 651-407-5700. Find this ad and others at www.applylocal.jobs.

150

Help Wanted

ASSISTANT HS SOFTBALL COACH - School District of Clear Lake, Jr./Sr. High School. Assist Varsity coach and responsible for JV games. Practices start March 16th. Send letter of interest, experience, and qualifications to Mr. Dale Rosen at drosen@clwarriors.org or call 263-2117. Application materials at www.clwarriors.org or District Office. Deadline: Feb. 6th or until filled. EOE. Find this ad and others at www.applylocal.jobs.

150

Help Wanted

ASSISTANT HS TRACK COACH - School District of Clear Lake, Jr./Sr. High School. Assist Head Coaches for both boys' and girls' programs. Practices start March 9th. Send letter of interest, experience, and qualifications to Mr. Dale Rosen at drosen@clwarriors.org or call 263-2117. Application materials at www.clwarriors.org or District Office. Deadline: Feb. 6th or until filled. EOE. Find this ad and others at www.applylocal.jobs.

150

Help Wanted

EXPERIENCED PROCESS TECHNICIANS - Plastech Corporation, Frederic, WI. 2nd shift. \$29.00-\$31.00/hour. Apply at plastechcorporation.com, call/text 651-407-5700, or email hr@plastechcorporation.com. Find this ad and others at www.applylocal.jobs.

150

Help Wanted

International Paper hiring Maintenance Mechanic in Arden Hills, 11pm – 7am \$32.45/hr - \$42/hr Boiler licence required ipworkforme.com

150

Help Wanted

MS ASSISTANT VOLLEYBALL COACH - Prairie Farm and Clayton School Districts seeking qualified, student-centered coach for PFC MS Volleyball Co-op starting Fall 2026. Season runs mid-August through mid-October. Submit letter of interest to Alethea Seeger at aseeger@prairiefarm.k12.wi.us. Find this ad and others at www.applylocal.jobs.

150

Help Wanted

MS FOOTBALL COACH - Prairie Farm and Clayton School Districts seeking qualified, student-centered Middle School Football Coach for PFC MS Football Co-op starting Fall 2026. Season runs mid-August through mid-October. Submit letter of interest to Scott Mateski at mateskis@claytonsd.k12.wi.us. Find this ad and others at www.applylocal.jobs.

362

Miscellaneous

Buying sports card collections call Tom 612-701-7396

452

Rentals/Residential

Individual remote worker, looking to rent private residence starting fall 2026. Requires reliable internet. Call or text 302-778-5690

452

Rentals/Residential

Whispering Pines 2 bedroom apartment available with washer in unit. Rent is \$975. Please call 320-203-7771 for further information.

501

Real Estate Wanted

Recently married Army Veteran looking to buy 10+ acres to build a home or purchase an existing home to raise a family. Preferred location Isanti or Chisago County. Call or text 651-278-5882

501

Real Estate Wanted

You’ve Got It! Somebody Wants It!

TIRED OF SEARCHING FOR BUYERS? Placing a classified ad is an easy and affordable way to make your wares the focus of attention among potential buyers. What are you waiting for? Contact us today! Isanti-Chisago County Star 763.689.1181 sales@countystar.com

501

Real Estate Wanted

You’ve Got It! Somebody Wants It!

Sell it in the classifieds - 651-407-1237 or email sales@countystar.com

501

Real Estate Wanted

16-Inch seasoned, mixed hardwood. Two cord loads \$475. 20-inch outdoor stove wood, mixed hardwoods. Two cord loads \$450. Two cord loads 16" birch or oak \$475. Delivery charge over 25 miles. 320-679-1815.

501

Real Estate Wanted

358 Firewood

501

Real Estate Wanted

16-Inch seasoned, mixed hardwood. Two cord loads \$475. 20-inch outdoor stove wood, mixed hardwoods. Two cord loads \$450. Two cord loads 16" birch or oak \$475. Delivery charge over 25 miles. 320-679-1815.

501

Real Estate Wanted

16-Inch seasoned, mixed hardwood. Two cord loads \$475. 20-inch outdoor stove wood, mixed hardwoods. Two cord loads \$450. Two cord loads 16" birch or oak \$475. Delivery charge over 25 miles. 320-679-1815.

501

Real Estate Wanted

16-Inch seasoned, mixed hardwood. Two cord loads \$475. 20-inch outdoor stove wood, mixed hardwoods. Two cord loads \$450. Two cord loads 16" birch or oak \$475. Delivery charge over 25 miles. 320-679-1815.

501

Real Estate Wanted

16-Inch seasoned, mixed hardwood. Two cord loads \$475. 20-inch outdoor stove wood, mixed hardwoods. Two cord loads \$450. Two cord loads 16" birch or oak \$475. Delivery charge over 25 miles. 320-679-1815.

501

Real Estate Wanted

16-Inch seasoned, mixed hardwood. Two cord loads \$475. 20-inch outdoor stove wood, mixed hardwoods. Two cord loads \$450. Two cord loads 16" birch or oak \$475. Delivery charge over 25 miles. 320-679-1815.

501

Real Estate Wanted

16-Inch seasoned, mixed hardwood. Two cord loads \$475. 20-inch outdoor stove wood, mixed hardwoods. Two cord loads \$450. Two cord loads 16" birch or oak \$475. Delivery charge over 25 miles. 320-679-1815.

501

Real Estate Wanted

16-Inch seasoned, mixed hardwood. Two cord loads \$475. 20-inch outdoor stove wood, mixed hardwoods. Two cord loads \$450. Two cord loads 16" birch or oak \$475. Delivery charge over 25 miles. 320-679-1815.

501

Real Estate Wanted

16-Inch seasoned, mixed hardwood. Two cord loads \$475. 20-inch outdoor stove wood, mixed hardwoods. Two cord loads \$450. Two cord loads 16" birch or oak \$475. Delivery charge over 25 miles. 320-679-1815.

501

Real Estate Wanted

16-Inch seasoned, mixed hardwood. Two cord loads \$475. 20-inch outdoor stove wood, mixed hardwoods. Two cord loads \$450. Two cord loads 16" birch or oak \$475. Delivery charge over 25 miles. 320-679-1815.

501

Real Estate Wanted

16-Inch seasoned, mixed hardwood. Two cord loads \$475. 20-inch outdoor stove wood, mixed hardwoods. Two cord loads \$450. Two cord loads 16" birch or oak \$475. Delivery charge over 25 miles. 320-679-1815.

501

Real Estate Wanted

16-Inch seasoned, mixed hardwood. Two cord loads \$475. 20-inch outdoor stove wood, mixed hardwoods. Two cord loads \$450. Two cord loads 16" birch or oak \$475. Delivery charge over 25 miles. 320-679-1815.

501

Real Estate Wanted

16-Inch seasoned, mixed hardwood. Two cord loads \$475. 20-inch outdoor stove wood, mixed hardwoods. Two cord loads \$450. Two cord loads 16" birch or oak \$475. Delivery charge over 25 miles. 320-679-1815.

501

Real Estate Wanted

16-Inch seasoned, mixed hardwood. Two cord loads \$475. 20-inch outdoor stove wood, mixed hardwoods. Two cord loads \$450. Two cord loads 16" birch or oak \$475. Delivery charge over 25 miles. 320-679-1815.

501

Real Estate Wanted

16-Inch seasoned, mixed hardwood. Two cord loads \$475. 20-inch outdoor stove wood, mixed hardwoods. Two cord loads \$450. Two cord loads 16" birch or oak \$475. Delivery charge over 25 miles. 320-679-1815.

501

Real Estate Wanted

16-Inch seasoned, mixed hardwood. Two cord loads \$475. 20-inch outdoor stove wood, mixed hardwoods. Two cord loads \$450. Two cord loads 16" birch or oak \$475. Delivery charge over 25 miles. 320-679-1815.

501

Real Estate Wanted

16-Inch seasoned, mixed hardwood. Two cord loads \$475. 20-inch outdoor stove wood, mixed hardwoods. Two cord loads \$450. Two cord loads 16" birch or oak \$475. Delivery charge over 25 miles. 320-679-1815.

501

Real Estate Wanted

16-Inch seasoned, mixed hardwood. Two cord loads \$475. 20-inch outdoor stove wood, mixed hardwoods. Two cord loads \$450. Two cord loads 16" birch or oak \$475. Delivery charge over 25 miles. 320-679-1815.

501

Real Estate Wanted

16-Inch seasoned, mixed hardwood. Two cord loads \$475. 20-inch outdoor stove wood, mixed hardwoods. Two cord loads \$450. Two cord loads 16" birch or oak \$475. Delivery charge over 25 miles. 320-679-1815.

501

Real Estate Wanted

16-Inch seasoned, mixed hardwood. Two cord loads \$475. 20-inch outdoor stove wood, mixed hardwoods. Two cord loads \$450. Two cord loads 16" birch or oak \$475. Delivery charge over 25 miles. 320-679-1815.

501

Real Estate Wanted

16-Inch seasoned, mixed hardwood. Two cord loads \$475. 20-inch outdoor stove wood, mixed hardwoods. Two cord loads \$450. Two cord loads 16" birch or oak \$475. Delivery charge over 25 miles. 320-679-1815.

501

Real Estate Wanted

16-Inch seasoned, mixed hardwood. Two cord loads \$475. 20-inch outdoor stove wood, mixed hardwoods. Two cord loads \$450. Two cord loads 16" birch or oak \$475. Delivery charge over 25 miles. 320-679-1815.

501

Real Estate Wanted

16-Inch seasoned, mixed hardwood. Two cord loads \$475. 20-inch outdoor stove wood, mixed hardwoods. Two cord loads \$450. Two cord loads 16" birch or oak \$475. Delivery charge over 25 miles. 320-679-1815.

501

Real Estate Wanted

16-Inch seasoned, mixed hardwood. Two cord loads \$475. 20-inch outdoor stove wood, mixed hardwoods. Two cord loads \$450. Two cord loads 16" birch or oak \$475. Delivery charge over 25 miles. 320-679-1815.

501

Real Estate Wanted

16-Inch seasoned, mixed hardwood. Two cord loads \$475. 20-inch outdoor stove wood, mixed hardwoods. Two cord loads \$450. Two cord loads 16" birch or oak \$475. Delivery charge over 25 miles. 320-679-1815.

501

Real Estate Wanted

16-Inch seasoned, mixed hardwood. Two cord loads \$475. 20-inch outdoor stove wood, mixed hardwoods. Two cord loads \$450. Two cord loads 16" birch or oak \$475. Delivery charge over 25 miles. 320-679-1815.

501

Real Estate Wanted

16-Inch seasoned, mixed hardwood. Two cord loads \$475. 20-inch outdoor stove wood, mixed hardwoods. Two cord loads \$450. Two cord loads 16" birch or oak \$475. Delivery charge over 25 miles. 320-679-1815.

501

Real Estate Wanted

16-Inch seasoned, mixed hardwood. Two cord loads \$475. 20-inch outdoor stove wood, mixed hardwoods. Two cord loads \$450. Two cord loads 16" birch or oak \$475. Delivery charge over 25 miles. 320-679-1815.

501

Real Estate Wanted

16-Inch seasoned, mixed hardwood. Two cord loads \$475. 20-inch outdoor stove wood, mixed hardwoods. Two cord loads \$450. Two cord loads 16" birch or oak \$475. Delivery charge over 25 miles. 320-679-1815.

501

Real Estate Wanted

16-Inch seasoned, mixed hardwood. Two cord loads \$475. 20-inch outdoor stove wood, mixed hardwoods. Two cord loads \$450. Two cord loads 16" birch or oak \$475. Delivery charge over 25 miles. 320-679-1815.

501

Real Estate Wanted

16-Inch seasoned, mixed hardwood. Two cord loads \$475. 20-inch outdoor stove wood, mixed hardwoods. Two cord loads \$450. Two cord loads 16" birch or oak \$475. Delivery charge over 25 miles. 320-679-1815.

501

Real Estate Wanted

16-Inch seasoned, mixed hardwood. Two cord loads \$475. 20-inch outdoor stove wood, mixed hardwoods. Two cord loads \$450. Two cord loads 16" birch or oak \$475. Delivery charge over 25 miles. 320-679-1815.

501

Real Estate Wanted

16-Inch seasoned, mixed hardwood. Two cord loads \$475. 20-inch outdoor stove wood, mixed hardwoods. Two cord loads \$450. Two cord loads 16" birch or oak \$475. Delivery charge over 25 miles. 320-679-1815.

501

Real Estate Wanted

16-Inch seasoned, mixed hardwood. Two cord loads \$475. 20-inch outdoor stove wood, mixed hardwoods. Two cord loads \$450. Two cord loads 16" birch or oak \$475. Delivery charge over 25 miles. 320-679-1815.

501

Real Estate Wanted

16-Inch seasoned, mixed hardwood. Two cord loads \$475. 20-inch outdoor stove wood, mixed hardwoods. Two cord loads \$450. Two cord loads 16" birch or oak \$475. Delivery charge over 25 miles. 320-679-1815.

501

Real Estate Wanted

16-Inch seasoned, mixed hardwood. Two cord loads \$475. 20-inch outdoor stove wood, mixed hardwoods. Two cord loads \$450. Two cord loads 16" birch or oak \$475. Delivery charge over 25 miles. 320-679-1815.

501

Real Estate Wanted

16-Inch seasoned, mixed hardwood. Two cord loads \$475. 20-inch outdoor stove wood, mixed hardwoods. Two cord loads \$450. Two cord loads 16" birch or oak \$475. Delivery charge over 25 miles. 320-679-1815.

501

Real Estate Wanted

16-Inch seasoned, mixed hardwood. Two cord loads \$475. 20-inch outdoor stove wood, mixed hardwoods. Two cord loads \$450. Two cord loads 16" birch or oak \$475. Delivery charge over 25 miles. 320-679-1815.

501

Real Estate Wanted

16-Inch seasoned, mixed hardwood. Two cord loads \$475. 20-inch outdoor stove wood, mixed hardwoods. Two cord loads \$450. Two cord loads 16" birch or oak \$475. Delivery charge over 25 miles. 320-679-1815.

501

Real Estate Wanted

16-Inch seasoned, mixed hardwood. Two cord loads \$475. 20-inch outdoor stove wood, mixed hardwoods. Two cord loads \$450. Two cord loads 16" birch or oak \$475. Delivery charge over 25 miles. 320-679-1815.

501

Real Estate Wanted

16-Inch seasoned, mixed hardwood. Two cord loads \$475. 20-inch outdoor stove wood, mixed hardwoods. Two cord loads \$450. Two cord loads 16" birch or oak \$475. Delivery charge over 25 miles. 320-679-1815.

501

Real Estate Wanted

16-Inch seasoned, mixed hardwood. Two cord loads \$475. 20-inch outdoor stove wood, mixed hardwoods. Two cord loads \$450. Two cord loads 16" birch or oak \$475. Delivery charge over 25 miles. 320-679-1815.

501

Real Estate Wanted

16-Inch seasoned, mixed hardwood. Two cord loads \$475. 20-inch outdoor stove wood, mixed hardwoods. Two cord loads \$450. Two cord loads 16" birch or oak \$475. Delivery charge over 25 miles. 320-679-1815.

501

Real Estate Wanted

16-Inch seasoned, mixed hardwood. Two cord loads \$475. 20-inch outdoor stove wood, mixed hardwoods. Two cord loads \$450. Two cord loads 16" birch or oak \$475. Delivery charge over 25 miles. 320-679-1815.

501

Real Estate Wanted

16-Inch seasoned, mixed hardwood. Two cord loads \$475. 20-inch outdoor stove wood, mixed hardwoods. Two cord loads \$450. Two cord loads 16" birch or oak \$475. Delivery charge over 25 miles. 320-679-1815.

501

Real Estate Wanted

16-Inch seasoned, mixed hardwood. Two cord loads \$475. 20-inch outdoor stove wood, mixed hardwoods. Two cord loads \$450. Two cord loads 16" birch or oak \$475. Delivery charge over 25 miles. 320-679-1815.

501

Real Estate Wanted

16-Inch seasoned, mixed hardwood. Two cord loads \$475. 20-inch outdoor stove wood, mixed hardwoods. Two cord loads \$450. Two cord loads 16" birch or oak \$475. Delivery charge over 25 miles. 320-679-1815.

501

Real Estate Wanted

16-Inch seasoned, mixed hardwood. Two cord loads \$475. 20-inch outdoor stove wood, mixed hardwoods. Two cord loads \$450. Two cord loads 16" birch or oak \$475. Delivery charge over 25 miles. 320-679-1815.

501

Real Estate Wanted

16-Inch seasoned, mixed hardwood. Two cord loads \$475. 20-inch outdoor stove wood, mixed hardwoods. Two cord loads \$450. Two cord loads 16" birch or oak \$475. Delivery charge over 25 miles. 320-679-1815.

501

Real Estate Wanted

16-Inch seasoned, mixed hardwood. Two cord loads \$475. 20-inch outdoor stove wood, mixed hardwoods. Two cord loads \$450. Two cord loads 16" birch or oak \$475. Delivery charge over 25 miles. 320-679-1815.

501

Real Estate Wanted

16-Inch seasoned, mixed hardwood. Two cord loads \$475. 20-inch outdoor stove wood, mixed hardwoods. Two cord loads \$450. Two cord loads 16" birch or oak \$475. Delivery charge over 25 miles. 320-679-1815.

501

Real Estate Wanted

16-Inch seasoned, mixed hardwood. Two cord loads \$475. 20-inch outdoor stove wood, mixed hardwoods. Two cord loads \$450. Two cord loads 16" birch or oak \$475. Delivery charge over 25 miles. 320-679-1815.

501

Real Estate Wanted

16-Inch seasoned, mixed hardwood. Two cord loads \$475. 20-inch outdoor stove wood, mixed hardwoods. Two cord loads \$450. Two cord loads 16" birch or oak \$475. Delivery charge over 25 miles. 320-679-1815.

501

Real Estate Wanted

16-Inch seasoned, mixed hardwood. Two cord loads \$475. 20-inch outdoor stove wood, mixed hardwoods. Two cord loads \$450. Two cord loads 16" birch or oak \$475. Delivery charge over 25 miles. 320-679-1815.

501

Real Estate Wanted

16-Inch seasoned, mixed hardwood. Two cord loads \$475. 20-inch outdoor stove wood, mixed hardwoods. Two cord loads \$450. Two cord loads 16" birch or oak \$475. Delivery charge over 25 miles. 320-679-1815.

501

Real Estate Wanted

16-Inch seasoned, mixed hardwood. Two cord loads \$475. 20-inch outdoor stove wood, mixed hardwoods. Two cord loads \$450. Two cord loads 16" birch or oak \$475. Delivery charge over 25 miles. 320-679-1815.

501

Real Estate Wanted

16-Inch seasoned, mixed hardwood. Two cord loads \$475. 20-inch outdoor stove wood, mixed hardwoods. Two cord loads \$450. Two cord loads 16" birch or oak \$475. Delivery charge over 25 miles. 320-679-1815.

501

Real Estate Wanted

16-Inch seasoned, mixed hardwood. Two cord loads \$475. 20-inch outdoor stove wood, mixed hardwoods. Two cord loads \$450. Two cord loads 16" birch or oak \$475. Delivery charge over 25 miles. 320-679-1815.

501

Real Estate Wanted

16-Inch seasoned, mixed hardwood. Two cord loads \$475. 20-inch outdoor stove wood, mixed hardwoods. Two cord loads \$450. Two cord loads 16" birch or oak \$475. Delivery charge over 25 miles. 320-679-1815.

501

Real Estate Wanted

16-Inch seasoned, mixed hardwood. Two cord loads \$475. 20-inch outdoor stove wood, mixed hardwoods. Two cord loads \$450. Two cord loads 16" birch or oak \$475. Delivery charge over 25 miles. 320-679-1815.

501

Real Estate Wanted

16-Inch seasoned, mixed hardwood. Two cord loads \$475. 20-inch outdoor stove wood, mixed hardwoods. Two cord loads \$450. Two cord loads 16" birch or oak \$475. Delivery charge over 25 miles. 320-679-1815.

501

Real Estate Wanted

16-Inch seasoned, mixed hardwood. Two cord loads \$475. 20-inch outdoor stove wood, mixed hardwoods. Two cord loads \$450. Two cord loads 16" birch or oak \$475. Delivery charge over 25 miles. 320-679-1815.

501

Real Estate Wanted

16-Inch seasoned, mixed hardwood. Two cord loads \$475. 20-inch outdoor stove wood, mixed hardwoods. Two cord loads \$450. Two cord loads 16" birch or oak \$475. Delivery charge over 25 miles. 320-679-1815.

501

Real Estate Wanted

16-Inch seasoned, mixed hardwood. Two cord loads \$475. 20-inch outdoor stove wood, mixed hardwoods. Two cord loads \$450. Two cord loads 16" birch or oak \$475. Delivery charge over 25 miles. 320-679-1815.

501

Real Estate Wanted

16-Inch seasoned, mixed hardwood. Two cord loads \$475. 20-inch outdoor stove wood, mixed hardwoods. Two cord loads \$450. Two cord loads 16" birch or oak \$475. Delivery charge over 25 miles. 320-679-1815.

501

Real Estate Wanted

16-Inch seasoned, mixed hardwood. Two cord loads \$475. 20-inch outdoor stove wood, mixed hardwoods. Two cord loads \$450. Two cord loads 16" birch or oak \$475. Delivery charge over 25 miles. 320-679-1815.

501

Real Estate Wanted

16-Inch seasoned, mixed hardwood. Two cord loads \$475. 20-inch outdoor stove wood, mixed hardwoods. Two cord loads \$450. Two cord loads 16" birch or oak \$475. Delivery charge over 25 miles. 320-679-1815.

501

Real Estate Wanted

16-Inch seasoned, mixed hardwood. Two cord loads \$475. 20-inch outdoor stove wood, mixed hardwoods. Two cord loads \$450. Two cord loads 16" birch or oak \$475. Delivery charge over 25 miles. 320-679-1815.

501

Real Estate Wanted

16-Inch seasoned, mixed hardwood. Two cord loads \$475. 20-inch outdoor stove wood, mixed hardwoods. Two cord loads \$450. Two cord loads 16" birch or oak \$475. Delivery charge over 25 miles. 320-679-1815.

501

Real Estate Wanted

16-Inch seasoned, mixed hardwood. Two cord loads \$475. 20-inch outdoor stove wood, mixed hardwoods. Two cord loads \$450. Two cord loads 16" birch or oak \$475. Delivery charge over 25 miles. 320-679-1815.

501

Real Estate Wanted

16-Inch seasoned, mixed hardwood. Two cord loads \$475. 20-inch outdoor stove wood, mixed hardwoods. Two cord loads \$450. Two cord loads 16" birch or oak \$475. Delivery charge over 25 miles. 320-679-1815.

501

Real Estate Wanted

16-Inch seasoned, mixed hardwood. Two cord loads \$475. 20-inch outdoor stove wood, mixed hardwoods. Two cord loads \$450. Two cord loads 16" birch or oak \$475. Delivery charge over 25 miles. 320-679-1815.

501

Real Estate Wanted

16-Inch seasoned, mixed hardwood. Two cord loads \$475. 20-inch outdoor stove wood, mixed hardwoods. Two cord loads \$450. Two cord loads 16" birch or oak \$475. Delivery charge over 25 miles. 320-679-1815.

501

Real Estate Wanted

16-Inch seasoned, mixed hardwood. Two cord loads \$475. 20-inch outdoor stove wood, mixed hardwoods. Two cord loads \$450. Two cord loads 16" birch or oak \$475. Delivery charge over 25 miles. 320-679-1815.

501

Real Estate Wanted

16-Inch seasoned, mixed hardwood. Two cord loads \$475. 20-inch outdoor stove wood, mixed hardwoods. Two cord loads \$450. Two cord loads 16" birch or oak \$475. Delivery charge over 25 miles. 320-679-1815.

501

Real Estate Wanted

16-Inch seasoned, mixed hardwood. Two cord loads \$475. 20-inch outdoor stove wood, mixed hardwoods. Two cord loads \$450. Two cord loads 16" birch or oak \$475. Delivery charge over 25 miles. 320-679-1815.

501

Real Estate Wanted

16-Inch seasoned, mixed hardwood. Two cord loads \$475. 20-inch outdoor stove wood, mixed hardwoods. Two cord loads \$450. Two cord loads 16" birch or oak \$475. Delivery charge over 25 miles. 320-679-1815.

501

Real Estate Wanted

16-Inch seasoned, mixed hardwood. Two cord loads \$475. 20-inch outdoor stove wood, mixed hardwoods. Two cord loads \$450. Two cord loads 16" birch or oak \$475. Delivery charge over 25 miles. 320-679-1815.

501

Real Estate Wanted

16-Inch seasoned, mixed hardwood. Two cord loads \$475. 20-inch outdoor stove wood, mixed hardwoods. Two cord loads \$450. Two cord loads 16" birch or oak \$475. Delivery charge over 25 miles. 320-679-1815.

501

Real Estate Wanted

16-Inch seasoned, mixed hardwood. Two cord loads \$475. 20-inch outdoor stove wood, mixed hardwoods. Two cord loads \$450. Two cord loads 16" birch or oak \$475. Delivery charge over 25 miles. 320-679-1815.

501

Real Estate Wanted

16-Inch seasoned, mixed hardwood. Two cord loads \$475. 20-inch outdoor stove wood, mixed hardwoods. Two cord loads \$450. Two cord loads 16" birch or oak \$475. Delivery charge over 25 miles. 320-679-1815.

501

Real Estate Wanted

16-Inch seasoned, mixed hardwood. Two cord loads \$475. 20-inch outdoor stove wood, mixed hardwoods. Two cord loads \$450. Two cord loads 16" birch or oak \$475. Delivery charge over 25 miles. 320-679-1815.

501

Real Estate Wanted

16-Inch seasoned, mixed hardwood. Two cord loads \$475. 20-inch outdoor stove wood, mixed hardwoods. Two cord loads \$450. Two cord loads 16" birch or oak \$475. Delivery charge over 25 miles. 320-679-1815.

501

Real Estate Wanted

16-Inch seasoned, mixed hardwood. Two cord loads \$475. 20-inch outdoor stove wood, mixed hardwoods. Two cord loads \$450. Two cord loads 16" birch or oak \$475. Delivery charge over 25 miles. 320-679-1815.

501

Real Estate Wanted

16-Inch seasoned, mixed hardwood. Two cord loads \$475. 20-inch outdoor stove wood, mixed hardwoods. Two cord loads \$450. Two cord loads 16" birch or oak \$475. Delivery charge over 25 miles. 320-679-1815.

501

Real Estate Wanted

16-Inch seasoned, mixed hardwood. Two cord loads \$475. 20-inch outdoor stove wood, mixed hardwoods. Two cord loads \$450. Two cord loads 16" birch or oak \$475. Delivery charge over 25 miles. 320-679-1815.

501

Real Estate Wanted

16-Inch seasoned, mixed hardwood. Two cord loads \$475. 20-inch outdoor stove wood, mixed hardwoods. Two cord loads \$450. Two cord loads 16" birch or oak \$475. Delivery charge over 25 miles. 320-679-1815.

501

Real Estate Wanted

16-Inch seasoned, mixed hardwood. Two cord loads \$475. 20-inch outdoor stove wood, mixed hardwoods. Two cord loads \$450. Two cord loads 16" birch or oak \$475. Delivery charge over 25 miles. 320-679-1815.

501

Real Estate Wanted

16-Inch seasoned, mixed hardwood. Two cord loads \$475. 20-inch outdoor stove wood, mixed hardwoods. Two cord loads \$450. Two cord loads 16" birch or oak \$475. Delivery charge over 25 miles. 320-679-1815.

<

EMPLOYMENT

Public Safety 911 Emergency Dispatcher

PT Casual Less Than 20 hrs Per Week

Performs difficult work receiving, recording, and responding to emergency and non-emergency calls; dispatching and coordinating law enforcement, fire, and medical personnel to caller locations, operating multi-line phone systems and enters data into a database; monitors and transmits on local, regional, and statewide radio resources; completes required reports. \$26.83 to \$35.34.

Apply online at www.chisagocountymn.gov by February 9, 2026, at 4:30 p.m.

CAMBRIDGE BUILDING MAINTENANCE SUPERVISOR

The City of Cambridge is accepting applications for a **full-time Building Maintenance Supervisor position**. Responsibilities include maintaining City owned properties, planning for future maintenance projects, and supervising custodial staff. Maintenance work includes plumbing repairs, HVAC system maintenance, painting, and fixing building/equipment. Position also supervises contractors for certain projects, as needed. Minimum qualifications include a high school diploma and equivalent two years moderate experience in building maintenance. Applicants must possess a valid driver's license and boiler's license. Starting salary ranges from \$34.02-\$37.74 per hour. Position is eligible for full benefits including health insurance, retirement plan and paid leave. Applications, as well as a complete job description, can be obtained at Cambridge City Hall, 300 3rd Avenue NE, Cambridge, MN 55008 or at <https://www.ci.cambridge.mn.us/your-government/employment>.

Application deadline is 4:30pm on February 11, 2026.

Case Manager/Assessor – Aging & Disability Services

North Branch, MN

Supports individuals through person-centered planning by assessing needs, determining eligibility for long-term services and supports, and developing service delivery plans that address environmental, social, safety, physical, rehabilitative, and health-related needs. Conducts MnCHOICES assessments in accordance with state and federal requirements. \$35.91 to \$47.29 DOQ.

Apply online at Minnesota Merit System by February 12, 2026:
<https://www.governmentjobs.com/careers/mnmeritsystem>

Need a Legal Published?

Call 763.689.1181

Emergency Preparedness Coordinator

Providing leadership, planning, and implementation expertise to ensure a coordinated approach to prepare for, mitigate, respond to, and recover from an all-hazard event or incident with public health implications, gathering data and assisting with annual reports, working collaboratively with other departments and community partners in the County on All Hazards planning, Zoning collaboratives or advisory committees. \$38.07 to \$50.13 DOQ.

Apply online at www.chisagocountymn.gov by February 9, 2026.

CAMBRIDGE PART-TIME CUSTODIAN

The City of Cambridge is accepting applications for a **part-time Custodian position**. Responsibilities include cleaning and maintaining grounds at Cambridge City Hall, City Center Mall and other City owned properties. Normal hours for the position are expected to be 6 am-10 am on Monday-Friday. Minimum qualifications include a high school diploma or GED with considerable experience with custodial work. Applicants must also possess and maintain a valid driver's license. Starting salary will range from \$21.71-\$23.26 per hour depending on qualifications. While the position is not eligible for health insurance benefits, the position does include vacation, sick and holiday pay as defined in personnel policies. Applications, as well as a complete job description, can be obtained at Cambridge City Hall, 300 3rd Avenue NE, Cambridge, MN 55008 or at <https://www.ci.cambridge.mn.us/your-government/employment>.

Application deadline is 4:30pm on February 11, 2026.

Inside Sales Representative

Northstar Media is looking for a motivated person who likes to work with customers over the phone as an Inside Sales Rep. Mon, Tue, Wed, 20-25 hours per week in the Cambridge office. Responsibilities include classified ad sales, service and church directory ad sales, and special page/section ad sales in the Isanti-Chisago County Star, Pine City Pioneer, North Pine County News, Kanabec County Times and Advertiser as well as being able to sell into other newspapers, shoppers and online. Must have strong phone skills, be able to multitask, be good with computers and have strong organizational skills. Wage is \$16-18/hour. Possible full time position for the right candidate.

If interested, please submit resume to Jeff Andres, Publisher jeff@northstarmedia.net.

Reuse.
Repurpose.
Really Save!

Take a fresh look at the Classifieds, the original way to shop green!

ISANTI-CHISAGO
COUNTY STAR

In Print & Online!
www.isanti-chisagocountystar.com

To place an ad, call 763.689.1181 or go online today.