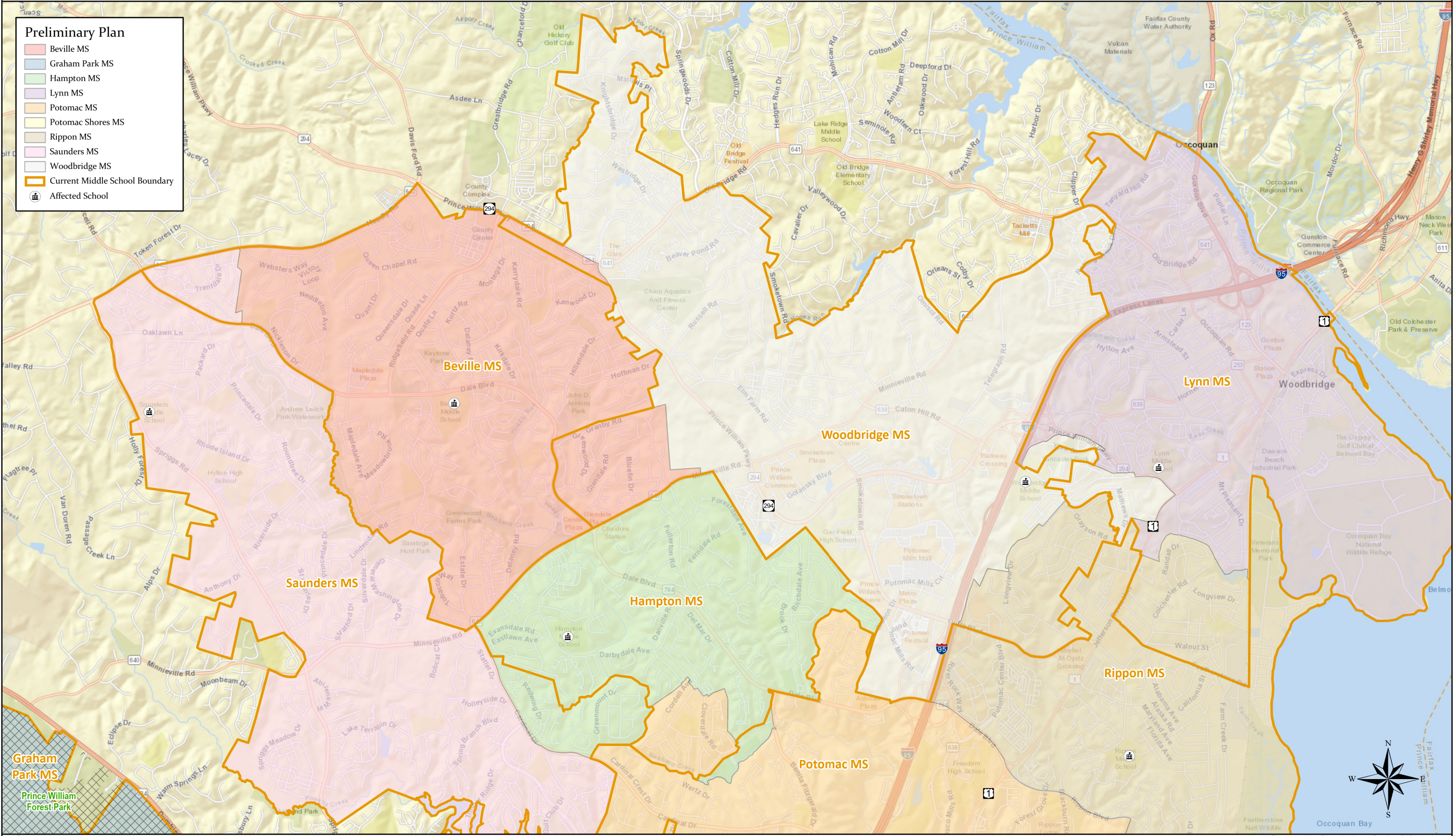


# Potomac Shores Preliminary Plan (North)

**Preliminary Plan**

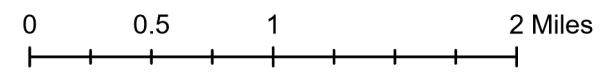
- Beville MS
- Graham Park MS
- Hampton MS
- Lynn MS
- Potomac MS
- Potomac Shores MS
- Rippon MS
- Saunders MS
- Woodbridge MS
- Current Middle School Boundary
- Affected School



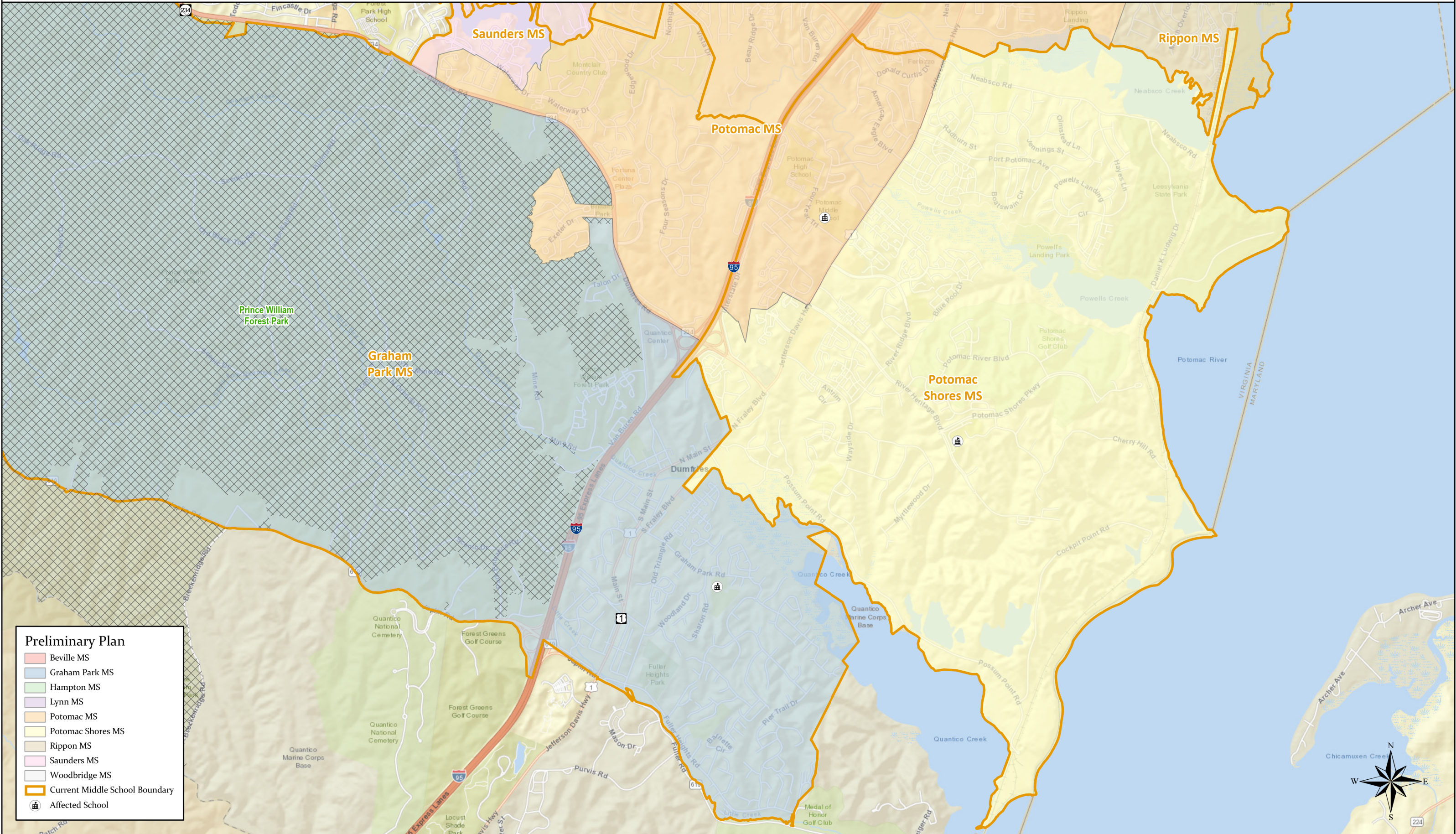
**Graham Park MS**  
Prince William Forest Park



Data:  
MS18b  
Prelim\_Plan



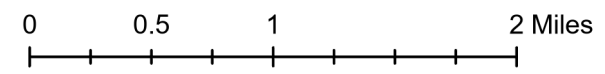
# Potomac Shores Preliminary Plan (South)



**Preliminary Plan**

- Beville MS
- Graham Park MS
- Hampton MS
- Lynn MS
- Potomac MS
- Potomac Shores MS
- Rippon MS
- Saunders MS
- Woodbridge MS
- Current Middle School Boundary
- Ⓜ Affected School

Data:  
MS18b  
Prelim\_Plan



Prepared by Scott Halsey, Senior GIS Analyst  
Prince William County Public Schools  
Office of Facilities Services  
February 2020



# 'Potomac Shores' Middle School - Student Enrollment Data

Opening School Year: 2021-22

## Current Boundaries

Middle School	Facility Data		Students Residing in Attendance Area (9/30/2019)					2021-22		2022-23		2023-24		2025-26		2027-28		Demographics of Attending Students (9/30/2019) <sup>4</sup>		
	School Capacity	Portable Classrooms	Total Students		Demographics <sup>6</sup>			Total Students	Pct. of Capacity	Total Students	Pct. of Capacity	Total Students	Pct. of Capacity	Total Students	Pct. of Capacity	Total Students	Pct. of Capacity	Pct. LEP	Pct. Econ. Disadvantaged	Pct. Minority
			Number	Pct. of Capacity	Pct. LEP	Pct. Econ. Disadvantaged	Pct. Minority													
Potomac Shores MS																				
Beville MS	1,256		1,230	97.9%	35.6%	51.7%	84.9%	1,076	85.7%	1,092	86.9%	1,079	85.9%	1,060	84.4%	1,034	82.3%	17.4%	57.1%	86.9%
Graham Park MS	863	8	975	113.0%	27.8%	52.1%	82.5%	1,074	124.4%	1,092	126.5%	1,133	131.3%	1,198	138.8%	1,265	146.6%	10.9%	52.3%	81.5%
Hampton MS	1,039	2	1,042	100.3%	47.6%	72.5%	90.5%	1,018	98.0%	1,033	99.4%	1,007	96.9%	1,044	100.5%	1,066	102.6%	17.5%	72.0%	91.2%
Lynn MS	1,139	10	1,416	124.3%	55.7%	72.8%	91.9%	1,352	118.7%	1,354	118.9%	1,421	124.8%	1,576	138.4%	1,657	145.5%	23.8%	74.7%	93.0%
Potomac MS	1,409		1,607	114.1%	21.0%	45.7%	87.7%	1,365	96.9%	1,393	98.9%	1,464	103.9%	1,543	109.5%	1,525	108.2%	11.1%	51.3%	90.3%
Rippon MS	1,394	2	1,306	93.7%	30.8%	58.7%	91.5%	1,402	100.6%	1,429	102.5%	1,482	106.3%	1,511	108.4%	1,534	110.0%	10.8%	56.4%	90.4%
Saunders MS	1,244		1,327	106.7%	17.4%	31.2%	70.1%	1,165	93.6%	1,138	91.5%	1,108	89.1%	1,099	88.3%	1,086	87.3%	5.6%	32.0%	71.0%
Woodbridge MS	1,081	9	1,232	114.0%	33.0%	50.4%	81.2%	1,286	119.0%	1,272	117.7%	1,269	117.4%	1,275	117.9%	1,268	117.3%	11.4%	49.0%	82.2%
<b>Total</b>	<b>9,425</b>	<b>31</b>	<b>10,135</b>	<b>107.5%</b>	<b>33.3%</b>	<b>54.0%</b>	<b>85.2%</b>	<b>9,738</b>	<b>103.3%</b>	<b>9,803</b>	<b>104.0%</b>	<b>9,963</b>	<b>105.7%</b>	<b>10,306</b>	<b>109.3%</b>	<b>10,435</b>	<b>110.7%</b>	<b>13.6%</b>	<b>55.6%</b>	<b>86.0%</b>

## Preliminary Plan

Middle School	Facility Data		Students Residing in Attendance Area (9/30/2019)					Time Period during which Student Enrollment Balancing Required by S.B. Regulation 264-2 <sup>2</sup>						Long-Range Student Enrollment Forecasts <sup>3</sup>				Demographics of Attending Students (2021-22) <sup>5</sup>		
	School Capacity	Portable Classrooms	Total Students		Demographics <sup>7</sup>			2021-22		2022-23		2023-24		2025-26		2027-28		Pct. LEP	Pct. Econ. Disadvantaged	Pct. Minority
			Number	Pct. of Capacity	Pct. LEP	Pct. Econ. Disadvantaged	Pct. Minority	Total Students <sup>1</sup>	Pct. of Capacity	Total Students	Pct. of Capacity	Total Students	Pct. of Capacity	Total Students	Pct. of Capacity	Total Students	Pct. of Capacity			
Potomac Shores MS	1,462		1,224	83.7%	20.4%	46.5%	86.8%	1,035	70.8%	1,061	72.6%	1,161	79.4%	1,299	88.9%	1,285	87.9%			
Beville MS	1,256		1,311	104.4%	36.6%	54.0%	85.4%	1,168	93.0%	1,161	92.4%	1,146	91.2%	1,162	92.5%	1,131	90.0%			
Graham Park MS	863		742	86.0%	33.7%	60.5%	91.5%	815	94.4%	822	95.2%	838	97.1%	910	105.4%	988	114.5%			
Hampton MS	1,039		1,091	105.0%	45.1%	69.7%	90.5%	1,047	100.8%	1,049	101.0%	1,013	97.5%	1,091	105.0%	1,117	107.5%			
Lynn MS	1,139		1,059	93.0%	53.6%	72.0%	91.3%	1,034	90.8%	1,046	91.8%	1,099	96.5%	1,236	108.5%	1,305	114.6%			
Potomac MS	1,409		1,249	88.6%	23.6%	47.4%	84.4%	1,307	92.8%	1,344	95.4%	1,380	97.9%	1,297	92.1%	1,244	88.3%			
Rippon MS	1,394		1,161	83.3%	45.4%	65.3%	92.3%	1,142	81.9%	1,151	82.6%	1,179	84.6%	1,219	87.4%	1,290	92.5%			
Saunders MS	1,244		1,294	104.0%	17.3%	30.8%	69.3%	1,138	91.5%	1,126	90.5%	1,092	87.8%	1,051	84.5%	1,054	84.7%			
Woodbridge MS	1,081		1,004	92.9%	28.7%	47.1%	79.1%	1,052	97.3%	1,043	96.5%	1,055	97.6%	1,041	96.3%	1,021	94.4%			
<b>Total</b>	<b>10,887</b>		<b>10,135</b>	<b>93.1%</b>	<b>33.3%</b>	<b>54.0%</b>	<b>85.2%</b>	<b>9,738</b>	<b>89.4%</b>	<b>9,803</b>	<b>90.0%</b>	<b>9,963</b>	<b>91.5%</b>	<b>10,306</b>	<b>94.7%</b>	<b>10,435</b>	<b>95.8%</b>			

Notes:

<sup>1</sup> Potomac Shores' MS is scheduled to open for the 2021-22 School Year.

<sup>2</sup> School Board Regulation 264-2 states that each plan will attempt to balance the enrollments at the affected schools within 15% of the overall capacity utilization of the affected schools over the subsequent three years (i.e., ± 15% of 91.5%, resulting compliant range is 76.5% to 106.5%)

<sup>3</sup> Student enrollment forecasts further into the future are inherently more susceptible to increases in margin of error.

<sup>4/5</sup> The demographic composition of attending students reflects students enrolled in a school. These percentages are influenced by student transfers. LEP students designated as 'Level 6 - Reaching First Year' or 'Level 6 - Reaching Second Year' are not counted in 'Attending' statistic.

<sup>6/7</sup> The demographic composition of residing students indicates a school's demographic composition based on the demographics of enrolled students on September 30, 2019, residing within the school's attendance area.