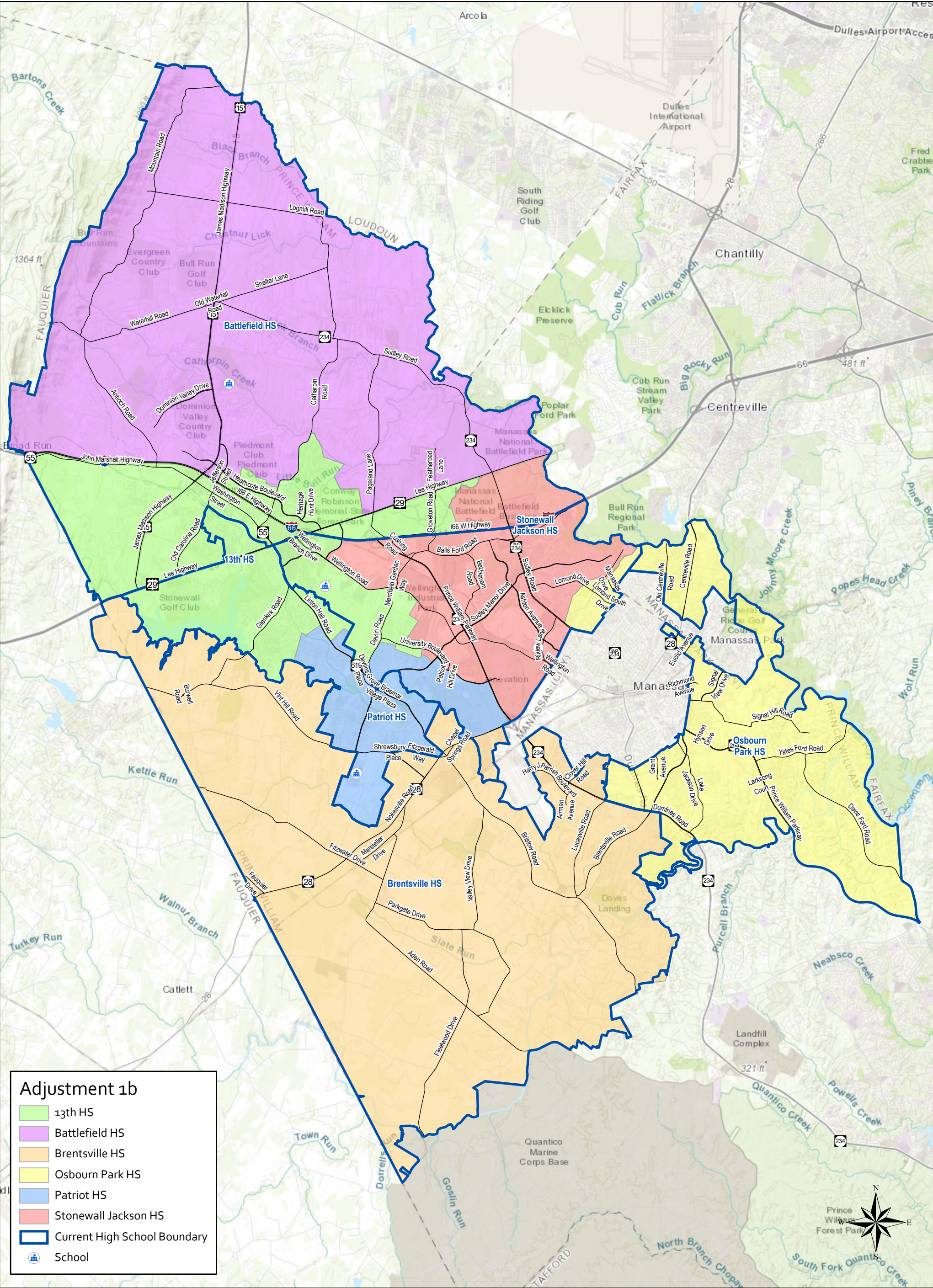


Brentsville District School Board Member  
Adjustment 1b

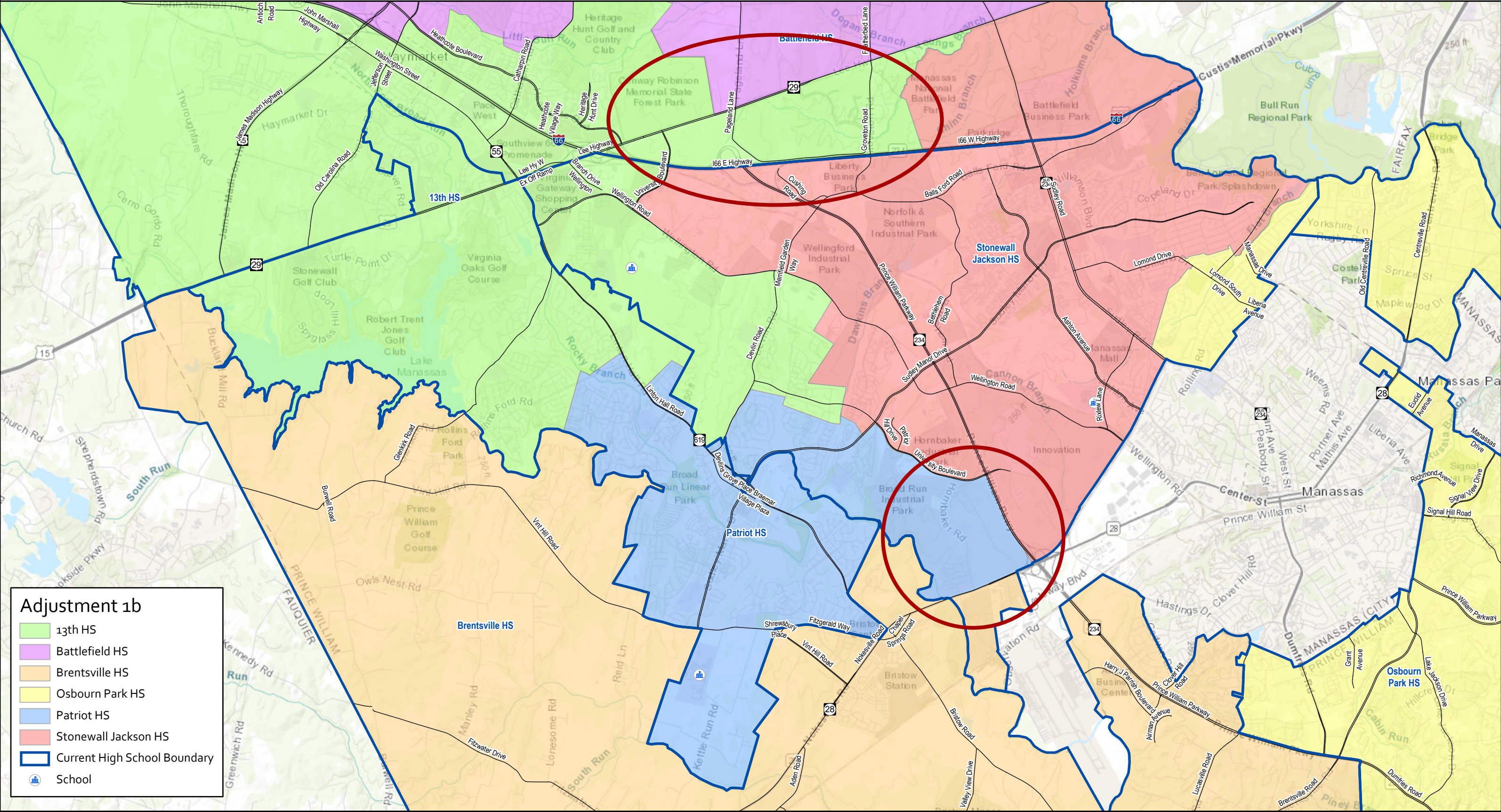


**Adjustment 1b**

- 13th HS
- Battlefield HS
- Brentsville HS
- Osbourn Park HS
- Patriot HS
- Stonewall Jackson HS
- Current High School Boundary
- School



Brentsville District School Board Member  
Adjustment 1b





# 13th High School - Enrollment Projections

Opening School Year: 2021-22

## Current Boundaries

High School	Facility Data		Students Residing in Attendance Area (9/30/2018)					2021-22		2022-23		2023-24		2025-26		2027-28		Demographics of Attending Students (9/30/2018) <sup>4</sup>		
	School Capacity	Portable Classrooms	Total Students		Demographics <sup>6</sup>			Total Students	Pct. of Capacity	Total Students	Pct. of Capacity	Total Students	Pct. of Capacity	Total Students	Pct. of Capacity	Total Students	Pct. of Capacity	Pct. LEP	Pct. Econ. Disadvantaged	Pct. Minority
			Number	Pct. of Capacity	Pct. LEP	Pct. Econ. Disadvantaged	Pct. Minority													
13th HS																				
Battlefield HS	2,053	18	2,887	140.6%	1.7%	9.9%	41.0%	3,059	149.0%	3,046	148.4%	3,058	149.0%	2,910	141.7%	2,949	143.6%	1.7%	10.5%	42.2%
Brentsville HS	1,110		880	79.3%	4.3%	14.4%	37.5%	1,070	96.4%	1,066	96.0%	1,061	95.6%	1,108	99.8%	1,101	99.2%	2.7%	11.7%	27.5%
Osborn Park HS	2,430		1,405	57.8%	12.3%	31.5%	62.3%	2,854	117.4%	2,889	118.9%	2,862	117.8%	2,451	100.9%	2,037	83.8%	8.3%	32.0%	69.7%
Patriot HS	2,053	20	2,965	144.4%	2.6%	12.1%	47.4%	2,735	133.2%	2,698	131.4%	2,669	130.0%	2,607	127.0%	2,655	129.3%	2.9%	12.4%	48.0%
Stonewall Jackson HS	2,409	7	2,964	123.0%	18.7%	50.7%	80.8%	2,822	117.1%	2,899	120.3%	3,081	127.9%	3,290	136.6%	3,528	146.5%	21.9%	55.7%	85.6%
Total	10,055	45	11,101	110.4%	8.0%	24.5%	55.8%	12,540	124.7%	12,598	125.3%	12,731	126.6%	12,366	123.0%	12,270	122.0%	7.8%	25.2%	57.2%

## Brentsville District School Board Member Adjustment 1b

High School	Facility Data		Students Residing in Attendance Area (9/30/2018)					Time Period during which Student Enrollment Balancing Required by S.B. Regulation 264-2. <sup>2</sup>						Long-Range Student Enrollment Forecasts <sup>3</sup>				Demographics of Attending Students (2021-22) <sup>5</sup>		
	School Capacity	Portable Classrooms	Total Students		Demographics <sup>7</sup>			2021-22		2022-23		2023-24		2025-26		2027-28		Pct. LEP	Pct. Econ. Disadvantaged	Pct. Minority
			Number	Pct. of Capacity	Pct. LEP	Pct. Econ. Disadvantaged	Pct. Minority	Total Students <sup>1</sup>	Pct. of Capacity	Total Students	Pct. of Capacity	Total Students	Pct. of Capacity	Total Students	Pct. of Capacity	Total Students	Pct. of Capacity			
13th HS	2,557		2,446	95.7%	3.1%	16.8%	53.0%	1,911	74.7%	2,520	98.6%	2,582	101.0%	2,568	100.4%	2,660	104.0%			
Battlefield HS	2,053		2,021	98.4%	1.0%	5.3%	35.1%	2,279	111.0%	2,024	98.6%	1,993	97.1%	1,834	89.3%	1,824	88.8%			
Brentsville HS	1,110		880	79.3%	4.3%	14.4%	37.5%	1,070	96.4%	1,066	96.0%	1,061	95.6%	1,108	99.8%	1,101	99.2%			
Osborn Park HS	2,430		1,725	71.0%	15.7%	36.5%	67.0%	3,063	126.0%	3,163	130.2%	3,157	129.9%	2,743	112.9%	2,350	96.7%			
Patriot HS	2,053		2,052	100.0%	2.4%	12.7%	46.2%	2,092	101.9%	1,859	90.6%	1,809	88.1%	1,821	88.7%	1,876	91.4%			
Stonewall Jackson HS	2,409		1,977	82.1%	22.1%	59.9%	88.6%	2,125	88.2%	1,966	81.6%	2,129	88.4%	2,292	95.1%	2,459	102.1%			
Total	12,612		11,101	88.0%	8.0%	24.5%	55.8%	12,540	99.4%	12,598	99.9%	12,731	100.9%	12,366	98.0%	12,270	97.3%			

Notes:

<sup>1</sup> 13th High School will not have a Senior Class (12th grade) in School Year 2021-22. Student enrollment projections based on assumption that 9th and 10th grade students in redistricted areas will attend the newly assigned school in SY 2021-22.

<sup>2</sup> School Board (S.B.) Regulation 264-2 states that each plan will attempt to balance the enrollments at the affected schools within 15% of the overall capacity utilization of the affected schools over the subsequent three years (i.e., ± 15% of 100.9%, resulting compliant range is 85.9% to 115.9%)

<sup>3</sup> Student enrollment forecasts further into the future are inherently more susceptible to increases in margin of error.

<sup>4/5</sup> The demographic composition of attending students reflects students enrolled in a school. These percentages are influenced by student transfers.

<sup>6/7</sup> The demographic composition of residing students indicates a school's demographic composition based on the demographics of enrolled students on September 30, 2018, residing within the school's attendance area.