

EMMETT CHERRY FESTIVAL

JUNE 12-15
2019

85TH ANNUAL



Emmett Messenger Index
EmmettMessenger-Index.com



Gem County
Chamber of Commerce

www.emmettcherryfestival.com

Call The Evans Realty Team For
All Your Real Estate Needs!

EVANS
REALTY LLC

1302 S. WASHINGTON
OFFICE 208-365-4495
1-800-275-4495
Fax 208-365-5022



Proud sponsor of the 85th
annual Cherry Festival
Picking Kindness!
What's Your Super Power?

WELCOME TO EMMETT

Specializing in all types of property.....



"Our Experience Makes the Difference"
"Professional & Caring Service"

1802002



Santiago Monte Vista

*From the moment you walk in, you'll know that you are home.
And you'll have peace of mind that you've selected a home
backed by the solid reputation of Santiago Sales.*

*We are a proud sponsor of this years
85th Annual Cherry Festival
Picking Kindness! What's Your Super Power?*



*We offer beautiful 3 bed, 2 bath homes!
Spacious layouts, on large lots,
in a great community!*



701 Monte Vista Drive Emmett, ID 83617

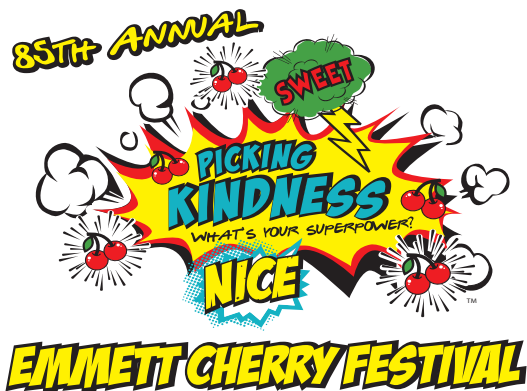


TABLE OF CONTENTS

Welcome to the Cherry Festival.....	4
Cherry Festival Schedule of Events	5
More Community Events.....	6 & 7
Everybody Loves A Carnival	8
Parade Grand Marshals	9
Cherry Festival Parade	10
Main Parade Route Map	11-12
Children's Parade.....	12
Food Court Menu Ideas	14 & 15
Cherry Festival Poster	16 & 17
Night Bands Schedule	18, 19, 20
Local U-Pick Cherries	21
Kiwanis Pancake Breakfast & Art Show.....	22
Car Show and Gem County Museum.....	23
Firehose Competition and Quilter Show ...	24
Thank You Sponsors & Supporters.....	25
Cherry Festival Vendor Map.....	26
Louie Gorrone Fun Run Walk	27
Pie Eating, Pit Spit and Train Show	28
Thank You Volunteers.....	29
FAQs & Emergency Contacts.....	30

A product of the Messenger Index, 2019



EMBRACING THE SEASONS OF LIFE

\$500 OFF
PER MONTH
THE FIRST
6 MONTHS
OF RESIDENCY

Offer Good Thru July 2019



1013 S Johns Ave.
Emmett, ID
(208) 365-1122
meadowviewal.com





HOSPITAL

1202 E Locust Street
Emmett, Idaho 83617
(208) 365-3561

URGENT CARE

Open 7 Days a Week, 8am-8pm
1102 E Locust Street
Emmett, Idaho 83617
(208) 365-6004

Valor Health

Emmett Medical Center

1102 E Locust Street
Emmett, Idaho 83617
(208) 365-6004

Family Medicine, including
Obstetrics, Geriatrics, Sports
Physicals, Immunizations,
and More.

**CARE FOR THE ENTIRE FAMILY
NOW ACCEPTING NEW PATIENTS**

Specialty Medicine & Surgical Clinic

1024 E Locust Street
Emmett, Idaho 83617
(208) 365-2338

General Surgery - Zachary Bastian, MD FACS
Gynecology - John Fox, MD
Foot & Ankle / Wound Care - TJ Martin, DPM

Orthopedics & Sports Medicine

1202 E Locust Street
Emmett, Idaho 83617
(208) 365-3563

Orthopedic Surgeon - Jerod Hines, MD

Welcome to the 85th Emmett Cherry Festival

By Krista Cole

GCCC Executive Director

"Picking Kindness. What's Your SuperPower?"

Welcome to the 85th Annual Emmett Cherry Festival and the longest running hometown event in Idaho! Each year we have offered more and more family-friendly entertainment throughout the community and 2019 is no exception. Cherry Festival activities run through the big event-packed week of June 12-15.

Our 2019 theme is "Picking Kindness. What's Your SuperPower?". We are so excited to see all the great floats and parade entries depicting the themes of "kindness" and "superpower". Watch for Bing, our Cherry Festival Mascot, who will be handing out "Kindness Coins" to folks throughout the festival.

We love sharing 'The Valley of Plenty' with visitors and promise to deliver an amazing experience with a cherry-on-top throughout the festivities. Enjoy Fresh-picked Cherries, a trip to the U-Pick Cherry Orchards, Cherry Ice Cream, Cherry Pie Eating Contests, Cherry Pit Spitting Contests, Old-Fashioned Black Cherry Soda, Cherry Floats, Cherry Lemonade, Cherry & Black Cherry Shaved Ice, Cherry Cokes, Cherry-topped Mini Do-



nuts, Cherry-delight Indian Frybread, Cherry Festival T-Shirts, Cherry-themed crafts, trinkets & treasures and of course, a huge slice of delicious Cherry Pie.

Cherries are the star of this show but many other stars shine on stage in the old fashioned band shell each day with nightly concerts featuring two headliners each evening you won't want to miss. All entertainment in the band shell is free and fabulous. Bring your blanket, grab some scrumptious festival food from one of our 19 food vendors and enjoy a free open air concert every night.

We are truly happy to have you as our guest in The Valley of Plenty. And we have plenty to offer this June during Cherry Festival season. Bring the family, meet old friends and make new ones... **We welcome you and thank you for being a part of our celebration.**

Visit valorhealth.org to see how we are evolving



85th EMMETT CHERRY FESTIVAL JUNE 2019

1765519



Cherry Festival Schedule of Events

Festival Hours:

11 a.m. – 10 p.m. Wednesday & Thursday
11 a.m. – 11 p.m. Friday & Saturday

Since the 1930s, the community of Emmett and Gem County has gathered each June to celebrate the region's longest continually running festival, "The Emmett Cherry Festival."

The Cherry Festival is always held during the second full week of June. The traditional events, concerts and carnival all happen in the Emmett City Park starting on Wednesday and through Saturday. Other celebrations and events take place throughout the community during the week of the festival.

Families gather, friends reunite and over 50,000 folks get together over the four days for the greatest family-friendly event in Idaho!

There is an abundance of FREE and FAMILY FRIENDLY activities. No cost to enter, no admission or gate fees; free daily entertainment and nightly concerts, parade and children's parade, free entry into all contests, and of course ... FUN is always FREE!

WEDNESDAY, JUNE 12

Valor Health Day!

11a.m. - 11:15a.m. GCRD Cheer
11:15 a.m. - 11:45 a.m. Gem Tumblers
11:45 a.m. - 12 p.m. Riot Xtreme
12 p.m. - 12:30 p.m. Veteran K-9 Training
12:30 p.m. - 12:45 p.m. EHS Talent Show Winners
1 - 2 p.m. Phil Berglund
2 p.m. - 3:30 p.m. Pine St. Blues Band
3:30 p.m. - 4:30 p.m. Josephine Spicer
5 p.m. - 6 p.m. Mekayla's Dance

6 p.m. - 6:45 p.m. OPENING CEREMONIES

"Picking Kindness. What's Your Superpower"
Pledge of Allegiance – National Guard
National Anthem – Kelyssa Montoya
Invocation – Pastor Mike Hughes
Introduction of Bing
Introduction of Mayor Gordon Petrie
Introduction of Gem. Co. Commissioners
Jr. Miss Cherry Festival – Rikki Hamley

6:45 p.m. - 7:30 p.m. Rock Academy

7:30 p.m. - 8:30 p.m. Merchants of Groove



8:30 p.m. - 9:30 p.m. Red Light Challenge
9:30 p.m. - 11 p.m. Guess When Celtic Rock

THURSDAY, JUNE 13

Idaho Pizza Day!

12 p.m. - 1 p.m. Leilani Carlson
1 p.m. - 2 p.m. Nancy Kelly
2 p.m. - 3 p.m. Debbie Mills
3 - 3:30 p.m. - Victoria Eades
4 p.m. - 5 p.m. Buckshot Crazy
5 p.m. - 6:30 p.m. Lake Dance Steps
6:30 p.m. - 7:30 p.m. Bravehearts Band
7:30 p.m. - 8:30 p.m. Buddy DeVore & the Faded Cowboys
8:30 p.m. - 9:30 p.m. Tribudours
9:30 p.m. - 11 p.m. Buckin' Country



FRIDAY, JUNE 14

Idaho Army National Guard Day!

11 a.m. - 1 p.m. Sharon Reikard
1 p.m. - 3 p.m. Sista Sarah & Pocket of Bones
3 p.m. - 4 p.m. Half-Fast Hillbillies
4 p.m. - 5 p.m. Lake Dance Steps
5 p.m. - 6 p.m. Lisa Bittick
6 p.m. - 6:30 p.m. Sarah Hanchey
6:30 p.m. - 7:30 p.m. Invisible Swordsman
7:30 p.m. - 8:30 p.m. Retreads
8:30 p.m. - 9:30 p.m. The Foothillbillies
9:30 p.m. - 11 p.m. Steve Fulton Music



SATURDAY, JUNE 15

Evans Realty Day!

11 a.m. - 12 p.m. Star Performers
12 p.m. - 1 p.m. Veteran K-9 Training
1 p.m. - 2 p.m. Ballet Folklorico
2 p.m. - 3 p.m. Cherry Pie Eating Contest
3 p.m. - 4:30 p.m. Gem Cloggers
4:30 p.m. - 5 p.m. Killarney Irish Dancers
5 - 6 p.m. - Dan Adkins
6 p.m. Cherry Festival PARADE
6:30 p.m. - 7:30 p.m. Doug Armento & the Iron Mules
7:30 p.m. - 8:30 p.m. Cliff Miller Music
8:30 p.m. - 9:30 p.m. Jay Statham & the Tokie Show
9:30 p.m. - 11 p.m. Grant Webb Band





www.emmettcherryfestival.com

Cherry Festival

MORE Community Events!

Cherry Festival Kickoff

Wed, June 5 at 12 noon
D&B Supply

Gem County Community Rodeo

Sat, June 1 at 11am
Registration starts at 10am
Gem County Fairgrounds

Jr. Miss Cherry Festival Pageant

Sat, June 8 at 2pm & 6pm
Emmett Middle School, 301 E. 4th St.
\$7 per person (3 and under free)

Gem County Village Museum

Wed - Sat, June 12 - 15 from 10am - 5pm
501 E. 1st St., Emmett

ECAC Art Show & Competition

Entries can be submitted Mon, June 10,
12pm - 6:30pm Thurs - Sat, June 12 - 15
from 10am - 7pm City Hall, 501 E. Main St.



WALLACE FAMILY DENTISTRY

Complete dental care for your family.

Darren Wallace, D.M.D.

Andrea Wallace, D.M.D.



EMERGENCIES SEEN SAME DAY!

- | | |
|--|---|
| <input type="checkbox"/> Bleaching / Tooth Whitening | <input type="checkbox"/> Laser Treatment for Periodontal Disease and Cold Sores |
| <input type="checkbox"/> Endodontics (Root Canals) | <input type="checkbox"/> Implants & Implant Supported Dentures |
| <input type="checkbox"/> Laser Cavity Diagnosis | <input type="checkbox"/> Digital X-Ray & Intra-Oral Camera |
| <input type="checkbox"/> 3D Conebeam Imaging | |



Call Office For Participating Provider Insurance Information
www.wallace-dentistry.com

NEW! Your crowns
made SAME DAY as your appointment



208-365-3534

NEW PATIENTS WELCOME

2003 E. Quail Run Rd, Emmett, Idaho



85th EMMETT CHERRY FESTIVAL JUNE 2019

1402336

Cherry Festival

www.emmettcherryfestival.com



36th Annual Quilt Show

"Valley of Plenty Quilters"

Thurs - Sat, June, 13, 14 & 15 10am - 5pm

Emmett Middle School, 301 E. 4th St.

Admission \$4.00 - Under 12 FREE

Cherry-Tastic Fundraising Yard Sale

Emmett Public Library,

275 S. Hayes

Fri, June 14 from 9am - 4pm, Sat, June 15 from 9am - 3pm

Emmett Cherry Festival Train Show

Lookout Junction Model Railroad Display

Fri, June 14 from 1pm - 7pm Sat, June 15 from Noon - 7pm

Gem County Rec. District,

107 E. Main St.

Cherry Festival Children's Parade

Fri, June 14 at 6:30pm

Registration begins at 5:20pm Blaser Park -

Theme is "Wild West"

Kiwanis Pancake Breakfast

Sat, June 15 from 7:10am - Noon

Gem County Senior Center, 719 S. Johns Ave.

Louie Gorrone Memorial Kiwanis-Cherry

Festival 5k Fun Run & Walk

Sat, June 15 at 8:00am Emmett City Park,

400 E Main St

Emmett Lions Car Show

Sat, June 15 from 8am - 3pm Main St. (McKinley to Johns Ave.)

Fireman Hose Competition

Sat, June 15 from 9am - 1pm

Corner of Main St. & McKinley Ave.

Bowman Memorial Park Bazaar

Sat, June 15, 11:00am - 9:00pm

Corner of Main St & Washington Ave

Cherry Pit Spit

Sat, June 15 at 12:00pm

On the Court House front steps

Cherry Pie Eating Contest

Sat, June 15 at 2:00pm

On the Entertainment Stage

Cherry Festival Parade

Sat, June 15 at 6pm

Hwy 16 to Washington Ave. & Main St.



JOHNS PLUMBING & HEATING SERVICES INC.

Certified, Licensed, Bonded, Insured

Residential & Commercial

Complete Plumbing Installation & Repair

Water & Sewer Lines • Plumbing Fixtures

365-4168

24 Hour Emergency Service

Milton & Levi Johns - owners

141 E. Enterprise • Emmett





www.emmettcherryfestival.com

Cherry Festival

Everybody Loves a Carnival!

Carnival Rides begin at 1p.m., Wednesday – Friday, and 12 Noon on Saturday

Rainier Amusements is family owned and operated company and has 60+ years of midway experience. They have been at the Cherry Festival for many years and provide a midway filled with exciting amusement rides, rewarding and fun games and food concessions at 30 events every year in the Pacific Northwest.



Ride the Rides All Day!

Get your tickets early

All-day carnival passes are on sale at D & B Supply, Evans Realty, First Interstate Bank, Amazing Idaho Real Estate, B&W

Fuels/Wild Willy's, Clarity Credit Union, Idaho Pizza, Gem County Recreation District and the Gem County Chamber of Commerce.

The discounted presale passes will only be sold until noon, Wednesday, June 12, so plan ahead and get your tickets early. All-day passes are available in the park afterwards at regular prices.

Some rides have height restrictions: No pregnant women; Must be at least 2 years old to ride; Everyone needs tickets to ride. For more information on Ride restrictions visit Rainier Amusements website.


FARMERS
INSURANCE



**MICHAEL R.
GURNEY**

365-4150

**HOME • AUTOMOTIVE
LIFE • BUSINESS INSURANCE**

1500 S WASHINGTON, STE.A, EMMETT, ID

1903807



85th EMMETT CHERRY FESTIVAL JUNE 2019



Parade Grand Marshals

Idaho Governor Brad Little and First Lady Teresa

Governor Brad Little and First Lady Teresa were chosen to be the 85th Emmett Cherry Festival Parade Marshals. Little is Idaho's 33rd Governor and Emmett is their hometown.

"Growing up in Emmett, the Cherry Festival was a signal that summer had officially arrived. Every year the festival brings back warm memories of family and friends. Each year of the festival is unique, but this year



it is a special honor for Teresa and me to serve as parade marshals. This is

a wonderful opportunity for us to welcome others to the town we love and

shine a light on the beauty and bounty of Emmett and Gem County."



**All you can eat lunch
buffet 11-2
Monday – Friday**

**Come visit us during
the Cherry Festival!**



TAKE-OUT AVAILABLE Call In Your Order
208-365-1567
517 N Washington Ave





www.emmettcherryfestival.com

Cherry Festival

Cherry Festival Parade

A Community Tradition for 85 years!

The Cherry Festival Parade will run down Washington Avenue and turn right on Main Street in front of the Emmett City Park at 6 p.m., Saturday, June 15. There will be NO water section again this year. The Idaho Army National Guard is the 2019 Parade Organizers.

Get Ready Early for the Parade.

You know the parade will begin soon when you see hundred of chairs lining downtown Emmett. Put out your chairs or blankets early for a great view of the parade. Look for BING & "Kindness Coins." For more information contact the Gem County Chamber of Commerce, 208-365-3485.



Locally Owned and Operated

*Let us "Recycle" your driveway!
We Specialize in New Paving,
Grading & Seal Coating.*

Driveway Paving
& Seal Coating
Recycled Asphalt & Gravel

Honest & Dependable
Fast Service

Free Estimates - Call Bob
(208) 369-0583



85th EMMETT CHERRY FESTIVAL JUNE 2019



www.emmettcherryfestival.com

Cherry Festival

Cherry Festival Children's Parade

Friday, June 14 at 6:30 p.m.

Children's Parade Route is on Main Street from Commercial to Johns Avenue.

The THEME for the Children's Parade is **"WILD WEST"**

Have fun decorating for the Children's Parade!

The Cherry Festival Children's Parade will be held at 6:30 p.m., Friday, June 14. Floats are to check in at 5:20 p.m. at Blaser Park, North Washington Avenue by the Idaho Northern Railroad Depot.

There is no entry fee to be in the parade. Those who register in the parade are entered into a drawing for a FREE carnival wrist band.

Children's Parade Route is on Main Street from Commercial to Johns Avenue.

Parade entries can be completed at the Gem County Recreation District, 107 East Main St, Emmett.

For more information, call 208-365-5748 or go online to www.gemcountyrecreation.com.



**Blue Ribbon
CAFE &
BAKERY**

FINE QUALITY BAKED GOODS ★ CAFE



**YOUR CHERRY PIE
HEADQUARTERS!**

**STOP IN FOR A SLICE OR CALL
AHEAD FOR A WHOLE PIE.**

**COME & WATCH THE
PARADE WITH US,
WE'LL BE OPEN!**

OPEN

**MON-SAT 6am to 8pm
SUNDAY closed**

515 S WASHINGTON 365-3290



Up Close with Animals at the Petting Zoo

Mountain View Livestock 4-H Petting Zoo is located near the children's playground in the Emmett City Park Saturday, June 15.





GEM

Veterinary + Clinic

We treat small pets & livestock

Mark Howlett, D.V.M.
Jaime Paeschke, D.V.M.
(Large/Small Animals)



**WE DO
HOUSE CALLS**

703 S. Washington Ave.
 Emmett, ID 83617
365-6008
www.gemvet.com



1765103

CUSTOM PUMP SERVICES



LARGE
OR SMALL
WE DO IT ALL!

WATER PUMP SALES & SERVICE
 (208) 369-0859
custompumpservices.com

YOUR FIRST
CH₂OICE



for all your water
pump needs

1765079



www.emmettcherryfestival.com

Cherry Festival

Food Court Menu Items

++ carries cherry related items

Big Papa Concessions #1

- Old Fashioned Soda
- Orange Cream • Cream
- Huckleberry • Root beer
- **Black Cherry ++**
- Add Ice Cream to any soda for floats
- Shake-Up Lemonade

Party Pups #2

- Party Pups • Long Party Pups
- Lemonade • **Cherry Lemonade ++**
- Bottled Water

Aaron's Dippin Dots #3

- Cookies n Creme • Cookie Dough
- Rainbow Ice • Mint Chocolate
- Brownie Batter • Cotton Candy
- Banana Split

Quick Shave Ice #4

- All flavors of Shaved Ice including:
- **Cherry ++ • Black Cherry ++**
- Italian Soda • Bottled Water
- Pepsi Products- Fountain Drinks

Idaho Pizza Company #5

- Pizza by the slice
- Pepperoni, Ham/pineapple, Cheese
- Idaho Pizza Twists
- **Cherry Pie with ice cream ++**
- All Coke products • Water
- **Cherry Cokes ++**

Ranch Concessions #6

- Chicken Cheese Pita w/ranch-BBQ- Mayo
- Rueben Pita w/sauerkraut
- Coke products/ Water • **Cherry Coke ++**

Lind's Concession #7

- A&W Root beer Floats
- Frozen Chocolate Dipped Bananas
- Granny Smith Apples Caramel'D
- **Frozen Cheesecake on a Stick w/ Cherries or Raspberries ++**
- **Fountain Drinks, Cherry Coke ++**
- **Cherry Coke Float ++**

Oriental Express #8

- Crab Pops • Sweet & Sour Chicken
- Teriyaki Chicken

- General Tso's Chicken
- Mandarin Hot Chicken
- Chicken Skewers • Korean BBQ
- Chicken and Rice Bento
- Egg Rolls – meat or vegetable
- Lg/ Sm Pork Fried Rice
- Thai Iced Tea • Water
- Chinese Lemonade
- Gatorade/Powerade
- Pepsi/Coke Products

B's Lemonade #9

- Fresh Squeezed Lemonade in 4 flavors Strawberry, Raspberry, Peach, **Cherry ++**
- All on Ice or blended as a slushy
- Water

Buffalo Grill #10

- Smoked Prime Rib sandwich
- Beef Hamburgers w/wo Cheese Single, Double, Triple w/wo Cheese
- Buffalo Burger w/wo Cheese, Single, Double, Triple

- Elk Burgers, Single, Double, Triple
- Pulled Pork Beef Sandwich
- BBQ Beef Sandwich • ¼ lb. All Beef Polish Dog
- Smoked Turkey Legs • Smoked BBQ Pork Ribs
- Fountain Drinks • Gatorade • Fresh Lemonade
- Bottled Water • Sun Tea

Somethin' Sweet #11

- Funnel Cakes • Elephant Ears
- Deep Fried: Oreos, Twinkies, Candy Bar, PB&J • Churros
- Whip Cream Topping
- Strawberry Topping
- Chocolate Topping
- Caramel Topping
- Ice Cream • Soda / Water

Corn Shack #12

- Roasted Corn • Baked Potatoes
- Nacho Chips
- Lemonade • Iced Tea
- Bottled Water • Sodas
- Gatorade

B&W FUELS, INC.

1900 N. Washington Ave. Emmett, ID 83617

FARM, HOME & COMMERCIAL DELIVERY

- Dyed Farm Diesel
- Clear Highway Diesel
- Gasoline With or Without Ethanol
- Stove Oil & Furnace Diesel
- High Octane Premium Gasolines

208-365-2291

MOTOR & HYDRAULIC OILS

- 55 Gallon Drums
- 5 Gallon Buckets
- Quart Bottles (by the case)
- Gallon Jugs (by the case)

COMPETITIVE PRICES



WILD WILLY'S
Convenience Store

ON THE BENCH... ON THE WAY!

1902828



- Tires
- Wheels
- Shocks
- Brakes
- Batteries
- Alignment
- Tire Siping



FREE PEACE OF MIND TIRE PROTECTION

Whatever the road throws at you - from potholes to nails - if your tire is damaged from any road hazard, we will replace the value of your tire.

FREE LIFETIME TIRE AND MILEAGE CARE

To help you get more miles out of your tires and more miles per gallon of gas.

- **FREE FLAT TIRE REPAIRS**
- **FREE TIRE ROTATIONS**
- **FREE TIRE REBALANCING**
- **FREE AIR CHECKS**
- **FREE BRAKE & ALIGNMENT CHECKS**

Hundreds of Les Schwab Locations to Serve You!

(208) 365-3548

419 N Washington • Emmett, ID 83617 • www.LesSchwab.com



1902830



85th EMMETT CHERRY FESTIVAL JUNE 2019

Cherry Festival

www.emmettcherryfestival.com



Colossal Onion Blossom #13

- Onion Blossom
- Chicken Strips and Fries
- Finger Steaks and Fries
- Deep Fried Pollock and Fries
- French Fries • Sweet Potato Fries
- Deep Fried Catfish and Fries
- Deep Fried Shrimp and Fries
- Volcanic Spuds
- Apple Fries • Meatball Sub
- Chocolate Covered Pickles
- Pork Fritter Sandwich
- Philly Cheese Steak Sandwich
- Deep Fried: Pickle on a Stick, Pickle Dog, Cheese on a Stick, Pineapple, Watermelon
- Deep Fried Treats: Moon Pies, Snickers, Milky Way, Idaho Spud Bars, Captain Crunch, Reese's Peanut Butter Cups, Baby Ruth, York Peppermint Patty, M&Ms, Fruit Loops, Apple Jacks, Trix, Cocoa Puffs, Payday, Butterfinger, Mounds, Almond Joy, Kitkat, Skittles, Oreos, Rollos, Nutter Butters, 3 Musketeers, Twinkies, PB&J Sandwiches, Honeycomb, Rice Krispie Treats
- Fountain Drinks • Bottled Water
- Sun Tea and Lemonade

Eve's Espresso #14

- Coffee of the Day • Hot Chocolate
- Iced/ Hot Tea • Chai Tea • Water
- Latte/ Mocha/ White Chocolate Mocha
- Frappe's/ Italian Soda • Espresso/ Cappuccino
- Espresso Shot/ Breve (Half & Half)/ Flavors
- Donuts/ Muffins Cinnamon rolls

Sweet Classics #15

- Freshly Popped Popcorn
- **Cherry Popcorn ++**
- Cotton Candy • Sno Cones
- Caramel Apples, Sliced and Traditional
- **Cherry Candied Apples ++**
- **Cherry Frozen Bananas ++**
- Frozen Chocolate Covered Bananas
- Pepsi Products • Water

Summer Salads #16

- Chicken Club Salad
- Caesar Salad • Cobb Salad
- Jumbo Soft Pretzels
- Friend Chicken Sandwich
- Chicken Fried Steak Sandwich
- Garlic Fries
- Curly Fries
- Cheese Dipping Sauce

- Coke Products Cans
- Water • Mini Donuts
- Bucket of Minis, 2 Doz.
- **Cherry Topping ++**

Mustard's #17

- State Fair Corn Dog
- Foot Long Hot Dog
- Spicy German Sausage
- Chorizo Sausage • Cheeseburger
- Curly Fries • Jumbo Soft Pretzel
- Cheese Dipping Sauce
- Can Soda/ Bottled Water

Papa Murphy's #18

- Pizza by the Slice • Combo Pizza
- Cheese Pizza • Pepperoni Pizza
- Bottles of Soda • Water

Cool Intentions #19

- **Cherry Soft Serve Ice Cream Cone ++**
- **Vanilla/Cherry Soft Serve Ice Cream Cone ++**
- **Hot Fudge Sundae with Cherries on top ++**
- **Cherry Floats ++**
- **Cherry Milk Shakes ++**
- **Cherry Malts ++**
- **Cherry Smoothie w/whip cream & Cherry Topping ++**
- **Cherry Italian Ice ++**

- **Cherry Gelato ++**
- Ice Cream Sandwich
- Iced Coffee (Blended) • Soda/ Water • Gatorade

MLS Enterprises #20

- Fry Bread: Honey Butter, Powder Sugar & Honey, Cinnamon Sugar, Chocolate Strips, Sweet Tooth, **Cherry Delight ++**
- Fry Bread: Maple Bacon, Beans & Cheese, Chili Meat & Cheese, Beans Chili Meat & Cheese, Chef Taco, Chicken Wrap
- Drinks: **Fresh Lemonade – Cherry, ++ Strawberry, Regular**

Basilios #21

- Tacos Al Pator • Gringas • Alambre
- Burritas • Torta
- Enchiladas: Chicken w/ Rice and Beans
- Cheese Enchiladas w/ Rice and Beans
- Tacos: Beef, Chicken, Carnitas, Tripa, Lengua, Fish
- Panbazo • Burrito Supreme
- Quesadilla: with meat / cheese only
- Bean and Cheese Burrito
- Rice and Beans • Vegetarian Burrito
- Vegetarian Tacos • Mexican Fruit Cups
- Mexican Aguas Frescas

"Let's find the perfect canvas for your life."



Michelle Welch

Realtor



John L. Scott
REAL ESTATE

208.350.0888
mwelch@johnlscott.com
mwelch.johnlscott.com

1902080

SQUAW BUTTE

SIGNS

- **Signs**
- **Banners**
- **Vehicle Lettering**



Gem Trophy

AND AWARDS

- ★ **Trophies**
- ★ **Plaques**
- ★ **Custom Printed T-Shirts**

208-365-2285



Presented by:

D & B SUPPLY



Main Stage Sponsor:

Corwin | Ford

Wednesday, June 12

Valor Health Day!

11:00am-11:15am GCRD Cheer
11:15am-11:45am Gem Tumblers
11:45am-12:00pm Riot Xtreme
12:00pm-12:30pm Veteran K-9 Training
1:00pm-2:00pm Phil Berglund
2:00pm-3:30pm Pine St. Blues Band
3:30pm-4:30pm Josephine Spicer
5:00pm-6:00pm McKayla's Dance

6:00pm-6:45pm OPENING CEREMONIES

"Picking Kindness. What's Your Superpower?"
Pledge of Allegiance - National Guard
National Anthem - Kalyssa Montoya
Invocation - Pastor Mike Hughes
Introduction of Bing

Cherry Festival

June 12-15, 2019

85TH ANNUAL



EMMETT CHERRY FESTIVAL



Saturday, June 15

Evans Realty Day!

11:00am-12:00pm Star Performers
12:00pm-1:00pm Veteran K-9 Training
1:00pm-2:00pm Ballet Folklorico
2:00pm-3:00pm **Cherry Pie Eating Contest**
3:00pm-4:30pm Gem Cloggers
4:30pm-5:00pm Killamey Irish Dancers
5:00pm-6:30pm Dan Adkins
6:00pm **Cherry Festival PARADE**
6:30pm-7:30pm Doug Armento & the Iron Mules
7:30pm-8:30pm Cliff Miller Music
8:30pm-9:30pm Jay Statham & the Tokie Show
9:30pm-11:00pm Grant Webb Band

MORE COMMUNITY EVENTS!

Cherry Festival Kickoff

Wed, June 5 at 12pm
D&B Supply

Gem County Community Rodeo

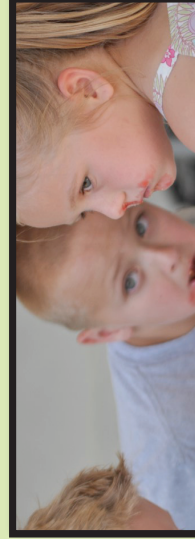
Sat, June 1st at 11am
Registration starts at 10am
Gem County Fairgrounds

Jr. Miss Cherry Festival Pageant

Sat, June 8 at 2pm & 6pm
Emmett Middle School Auditorium
\$7 per person (3 and under free)

Gem County Village Museum

Wed - Sat, June 12 - 15 from 10am - 5pm



Introduction of Mayor Gordon Petrie

Introduction of Gem. Co. Commissioners

Jr. Miss Cherry Festival - Rikki Hamley

6:45pm-7:30pm
7:30pm-8:30pm
8:30pm-9:30pm
9:30pm-11:00pm

Rock Academy
Merchants of Groove
Red Light Challenge
Guess When Celtic Rock

Thursday, June 13

Idaho Pizza Day!

12:00pm-1:00pm
1:00pm-2:00pm
2:00pm-3:00pm
3:00pm-3:30pm
4:00pm-5:00pm
5:00pm-6:30pm
6:30pm-7:30pm
7:30pm-8:30pm
8:30pm-9:30pm
9:30pm-11:00pm

Leilani Carlson
Nancy Kelly
Debbie Mills
Victoria Eades
Buckshot Crazy
Lake Dance Steps
Bravehearts Band
Buddy Devore & the Faded Cowboys
Tribudours
Bucking Country



Friday, June 14

Idaho Army National Guard Day!

11:00am-1:00pm
1:00pm-3:00pm
3:00pm-4:00pm
4:00pm-5:00pm
5:00pm-6:00pm
6:00pm-6:30pm
6:30pm-7:30pm
7:30pm-8:30pm
8:30pm-9:30pm
9:30pm-11:00pm

Sharon Reikard
Sista Sarah & Pocket of Bones
Half-Fast Hillbillies
Lake Dance Steps
Lisa Blitick
Sarah Hanchey
Invisible Swordsman
Retreads
The Foothillbillies
Steve Fulton Music



SCAN ME
to visit the
Cherry Festival
Website!

ALL DAY WRISTBANDS EARLYBIRD SALE!
UNTIL WEDNESDAY, JUNE 12 AT NOON!
(*All-Day Wristbands sell for \$45 onsite after 6/12 @ noon)



www.EmmettCherryFestival.com
CARNIVAL
ONLY \$30*



501 E. 1st St., Emmett

ECAC Art Show & Competition

Entries can be submitted Mon, June 10 12pm-7:30pm
Thurs - Sat, June 12-15 from 10am - 7pm
City Hall, 501 E. Main St.

36th Annual Quilt Show

"Valley of Plenty Quilters"
Thurs - Sat, June 13, 14 & 15 from 10am-5pm
Middle School, 301 E. 4th St.
Admission \$4.00 - Under 12 FREE

Cherry-Tastic Fundraising Yard Sale

Emmett Public Library, 275 S. Hayes
Fri, June 14 from 9am - 4pm
Sat, June 15 from 9am - 3pm

Emmett Cherry Festival Train Show

Lookout Junction Model Railroad Display
Fri, June 14 from 1pm - 7pm
Sat, June 15 from Noon - 7pm
Gem County Rec. District, 107 E. Main St.

Cherry Festival Children's Parade

Fri, June 14 from 6:30pm
Registration begins at 5:20pm
Blazer Park—Theme is "Wild West"

Kiwanis Pancake Breakfast

Sat, June 15 from 7:10am - 12pm
Gem County Senior Center, 719 S. Johns Ave.

Louie Gorrono Memorial Kiwanis—Cherry Festival

5K Fun Run & Walk

Sat, June 15 from 8am - 3pm
City Park

Emmett Lions Car Show

Sat, June 15 from 8am-3pm
Main St. (McKinley to Johns Ave.)

Fireman Hose Competition

Sat, June 15 from 9am - 1pm
Corner of Main St. & McKinley Ave.

Bowman Memorial Park Bazaar

Sat, June 15 from 11am - 9pm
Corner of Main St. & Washington Ave.

Cherry Pit Spit

Sat, June 15 at 12:00pm
On the Court House front steps

Cherry Pie Eating Contest

Sat, June 15 at 2:00pm
On the Entertainment Stage

Cherry Festival Parade

Sat, June 15 at 6pm
Hwy 16 to Washington Ave. & Main St.

Gem County Chamber of Commerce 1022 S. Washington Ave, Emmett, ID 83617 (208) 365-3485

 www.EmmettCherryFestival.com



www.emmettcherryfestival.com

Cherry Festival

Bandshell Night Bands

Wednesday

Rock Academy
Merchants of Groove
Red Light Challenge
Guess When
Celtic Rock

Thursday

Bravehearts Band
Buddy DeVore & the Faded
Cowboys
Tribudours
Buckin' Country

Friday

Invisible Swordsman
The Retreads
The Foothillbillies
Steve Fulton
Music

Saturday

Doug Armento and the
Iron Mules
Cliff Miller Music
Jay Statham & the Tokie Show
Grant Webb Band

Cherry Festival Comes Alive at Night

ROCK ACADEMY



Rock Academy is a local Youth Program designed to teach music in a contemporary group environment. It provides an outlet for youth to explore their musical creativity, develop camaraderie and make friends with similar interests and talents. Rock Academy Instructors: Greg Goodell - Primary Instructor; Aaron Lorcher - Coach; Bill Monti - Coach; Grant Webb - Assistant Coach. Current Members: Darrell Wade - Vocals, Guitar, Drums; Xanthus Wade - Guitar, Vocals; Bethlehem Hayes - Bass Guitar, Vocals; Zeke Hayes - Vocals, Guitar Zeke McClary - Drums; Kyle Hayes - Guitar; Luke Wester - Lead Guitar; Tanner Burlile - Lead Guitar.

MERCHANTS OF GROOVE

The Merchants of Groove is a professional rock and jazz band that has entertained at



annual concerts, such as the Doobie Brothers and Kool & the Gang. They combine talents to make a standard jazz song soar to the rooftops or offer a show-stopping solo. The Merchants will treat you to a trip down memory lane with something soft and sentimental. Let Jeff Parnett, Dan Miller, Bill Monti, Rob Dodge and Alex Gray show you how the Merchants of Groove will produce melodies to move your soul.

RED LIGHT CHALLENGE

Red Light Challenge is a fun, high-energy pop rock band filled with harmonies made up of core members Sean and Kyle Luster, multi-instrumental brothers who were born and raised in Hawaii. With influences from The Beatles, Imagine Dragons and Bruno Mars, their high-energy, harmony-filled original songs have been exciting audiences all over the Pacific Northwest, making them a "Best Local



Band" Top 5 nominee in Boise Weekly's 2018 Best of Boise poll and winners of the Idaho Next2Rock Battle of the Bands 2018 competition.

GUESS WHEN CELTIC ROCK



Guess When started in Emmett, as a traditional Celtic music group — with bagpipes, fiddle, bodhran and drums — over 10 years ago. Guess When Celtic Rock is now a full-fledged rock band featuring drums, bass guitar, electric and acoustic guitar, Irish Bouzouki, and the Great Highland bagpipes. Guess When is currently working on their third studio album which they hope to make available soon.

BRAVEHEARTS BAND



Idahoan, Jim Kern is lead singer and rhythm guitarist for his current band, Bravehearts Band, and plays Country, Country

Gospel and Old Time Rock and Roll. Jim is a Navy Vietnam Era Veteran. His love and concern for his fellow comrades led him to the founding of Brave Hearts Idaho in 2008. The ultimate mission of Brave Hearts is to "provide emergency funding for Idaho Veterans and their families who are experiencing critical need." Jim has shared the stage with notables such as George Hamilton IV, Tommy Cash, the younger brother of Johnny Cash and renowned singer-writer-composer Dottie Rambo.

BUDDY DEVORE & THE FADED COWBOYS



Mixing great Country classics with strong original material, Buddy sings with unbridled passion and authority He is currently working on a new album which will be available later in the summer. The Faded Cowboys consist of some of the finest musicians

Continued on **Page 19**

Cherry Festival

www.emmettcherryfestival.com



Continued from page 18

in the Northwest: Bernie Reilly, Dave Manion, and Louis McFarland. This band is as tight, energetic and entertaining as it gets. Expect to hear true Western Music at its very best when Buddy Devore and the Faded Cowboys hit the stage Thursday night!

TRIBUDOURS



The Tribudours perform your favorite Classic and Prime country favorites! On lead vocals Fred Buttram has been singing for 40 of his 48 years! He cut his teeth on all the greats Merle, George, Buck, Waylon. Lead Guitar- Mike

Trail is respected as the "go to" lead player in the area. He is a master at most every genre and can play country guitar at a Nashville level. Bass - Aaron Cambell plays Bass and guitar. Aaron is the sets the groove and feel that give the band that legit country sound. Bill Reichard plays steel guitar. Bill has a classic but unique sound that is both "purty" and powerful to add that sound that only a steel can ad. Drums - Brian Patterson is a veteran drum professional respected through the area in several genres of music.

BUCKIN' COUNTRY

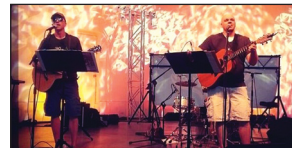


During the day, Butch Mowdy owns and Runs

Equine Kindergarten Facility in Emmett. Butch plays lead guitar and has done so for many years. Fred Romero is the Stud of the band and The Blues Man of the band. Fred plays bass guitar. He sounds like Freddy Fender. Craig Windom on drums is one of the greatest guys to ever hold a set of drum sticks. Craig is a full-time drummer, but he also can play the guitar and he can play most anything put in front of him. Kevin Hensen on rhythm guitar. Kevin is also a Horse Farrier and Jr Stock Contractor who owns and runs Rodeo Fever with his wife Sheila.

INVISIBLESWORDSMAN

Clark and Russell Elkins are only 18 months apart in age and have always been as tight as twins. With the two brothers at attending the



same university, they played their first acoustic shows, accompanied by older brother, Bryan, on bongos.

They won an acoustic band competition on their college campus, and hosted the weekly "acoustic night" for acoustic performers join in and play. The borhters continued to write music together. The two finished recording their second and third albums as the Invisible Swordsmen. By 2008, they both moved to Idaho. Sometimes accompanied

Continued on Page 20



jiffy lube
multicareSM
PROUD SUPPORTER OF
THE CHERRY FESTIVAL!



Your Jiffy Lube[®] is locally
owned and operated.
Please accept these coupons
and come see us soon!

\$24.99
*Synthetics & High Mileage
Blends additional charge

**JIFFY LUBE SIGNATURE
SERVICE[®] OIL CHANGE**



EXP: 7/31/19 CODE: CF175

**10%
OFF**

BRAKE SERVICES



EXP: 7/31/19 CODE: CF178R

Up to 5 qts. oil. Most Vehicles. Offer applies only to standard signature oil change, all other oil change services subject to additional charges. Must present coupon at time of service. Not valid with any other offer for same service. Valid only at participating locations. Jiffy Lube, the Jiffy Lube design mark and Jiffy Lube Signature Service[®] are registered trademarks of Jiffy Lube International, Inc. © 2019 Jiffy Lube International, Inc.

Up to 5 qts. oil. Most Vehicles. Must present coupon at time of service. Not valid with any other offer for same service. Valid only at participating locations. Jiffy Lube, the Jiffy Lube design mark and Jiffy Lube Signature Service[®] are registered trademarks of Jiffy Lube International, Inc. © 2019 Jiffy Lube International, Inc.

Offers valid at:

- 8018 Fairview Ave, Boise ID • (208) 375-7010
- 1484 S. Weidemen Ave, Boise ID • (208-378-8714)
- 1130 Caldwell Blvd, Nampa ID • (208) 467-7310
- 824 12th Ave. Rd, Nampa ID • (208-465-4431)
- 3606 W State St, Boise ID • (208) 344-8824





Continued from **page 19**

by younger brother, Ellis, on hand percussion.

THE RETREADS



The Retreads are a four-piece fun, dynamic and energetic band from Boise and Meridian whose niche is "playing between the lines." The Retreads offer a great selection of classic to modern rock and dance songs you're sure to know and blend in a unique mix of b-sides and less well-known tracks that are always crowd favorites. Their eclectic set and performance features variety that's sure to please even the most discriminating audiences. Also available in "Half-Plugged" version.

THE FOOTHILLBILLIES

The musical stylings of Brook Faulk are varied in range. Sometimes the maverick outlaw in her black felt cowboy hat, belting out a rowdy mix of blues, classic and indie rock, and honky tonk; and sometimes the innocent, sweet country girl, softly strumming her tenor guitar in her blue jeans and boots, with her Celtic lilting original songs of heartache and hope with Americana and alt country phrasing of lyrics bittersweet. She hails from Eastern Oregon, but has played and traveled the US. Brook is also a member of the board of directors of the Idaho Songwriters Association, and the founder and director of Idaho's only female Songwriting organization, Sisters in Songwriting.



STEVE FULTON MUSIC



Steve Fulton is a singer/songwriter from Boise, who performs under the stage name, SFM - Steve Fulton Music. He has performed all over the country for 20 years touring with his band and as a solo artist. His musical persona includes full band funky-rock-reggae and stripped down Americana. As well as being a singer-songwriter. Steve is also a producer and recording engineer. He is a household name in his hometown of Boise, where he also owns and operates one of the state's finest recording studios; The Audio Lab. Fulton also served as singer and guitarist in the group House of Hoi Polloi, which has recorded five albums and toured extensively throughout the Northwest solo and has released three solo CDs on his Uncommon Records label.

DOUG ARMENTO AND THE IRON MULES



With one foot in traditional country music and another exploring new sonic frontiers, Doug Armento and the Iron Mules are steadily breaking trail with their own gritty brand of what many would label "Outlaw Country." What originally started out as a father/son duo has quickly morphed into a hard-driving, alternative country band. Bassist, Dane Snow, and veteran drummer, Todd Sprague, provide a solid rhythm section and excellent backing vocals.

Frontman, Doug Armento, along with his sideman son, Doug Armento Jr., on lead guitar, bring a very dynamic and powerful chemistry to the stage. Doug Sr's bold, "old school" country vocal style, coupled with Doug Jr's highly innovative country/rock/blues guitar licks are a combination that give this band their own distinct sound.

As a performing songwriter, Doug Armento takes his craft seriously. Doug Armento and the Iron Mules are set to release their debut album in the spring of 2019, sporting thirteen original tunes. Many of the tracks have regional themes including "Salmon River Caveman," "Mountains of Idaho," "Damn Desert Town" and "Montello Rose." One of Doug's newest compositions, "58 GMC," is a song about bonding with his youngest son while building a classic truck. The band can be seen performing regularly at several local Treasure Valley venues such as Pengilly's Saloon, The Ranch Club and Indian Creek Steakhouse/Saloon.

CLIFF MILLER MUSIC

Born and raised in Horseshoe Bend, Cliff Miller was surrounded by music growing up. From listening to his mom sing in the church choir to watching his dad play town hall dances. Cliff started playing in bands at the age of 15 and began writing and recording music shortly after. His latest release, "Ground Blind" draws inspiration from family and small town life.



JAY STATHAM & THE TOKIE SHOW

Jay Statham & The Tokie Show is a southern rock band based out of West Texas.



The front man Jay has been up and down the interstate playing Honky Tonks all over the state since his junior year of high school. Over the past two years, Jay has taken the time to form a new project that is catching a lot of attention from fans, and other musicians in the scene. A highly electrifying show, and an interesting personality to boot, Jay Statham & The Tokie Show is a must see show.

THE GRANT WEBB BAND



The Grant Webb Band has a great sound with a mix of Country, Southern Rock and Blues.

Born and raised in Emmett, Grant Webb played music in church and with his dad in a country band on weekends. He and his older brother Scott played in a western country band with their dad Brad.

Learning to play the bass and guitar, at seventeen, Grant played with a Boise rock band. He eventually became the lead singer playing the guitar adding harmonica and mandolin to his country/southern rock sound. Boise drummer Kendall Shew was added to the band.

Grant now has two kids, and his musical career goal is to teach his kids to play one day and begin helping with music in church again. His shows are family oriented and good for all ages to watch.



Local CHERRIES you can pick and eat!

Cherry Varieties

Bing — Fruit almost black when fully ripe. Very large, excellent quality, firm, juicy, and sweet.

Rainier — Very attractive yellow cherry with a red blush similar to Royal Ann. Fruit sizes well even with a full set, and a distinct flavor superior to most varieties.

Lapins — Large, highly split-resistant, self-fertile Lambert type. Gaining widespread popularity in Canada and the US. Commercial testing to date has been promising. An excellent pollinator.

Cherry U-Pick Orchards
Please call ahead for hours

1. Crimson Gem Orchard
2571 W. South Slope Rd.
208-421-1950

2. Frozen Dog Fruit Stand,
3990 Fuller Rd. 208-365-8801

3. Grandma Jo's 2850 N.
Plaza Rd. 208-365-7255

4. Laney Orchards 787 W.
South Slope Rd. 208-369-6923

5. Rancho Pinard 4300
South Mill Rd. 208-365-6127

6. Shaw Orchards 802 S.
Plaza Rd. 208-365-3496

7. South Slope Tiny Farm
4920 S. Slope Rd. 208-866-4447

8. Tyler Rocky Point Orchard
145 E. South Slope Rd.
208-365-6160

9. Williams Fruit Ranch
2455 W. South Slope Rd.
208-365-7757



New Leaf Thrift

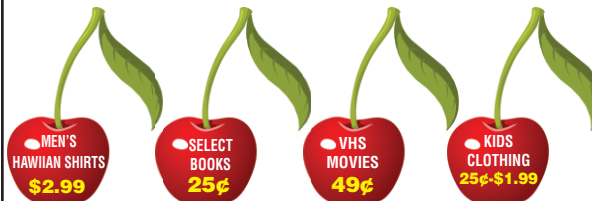
Making Lives Brighter



CHERRY FESTIVAL & FATHER'S DAY SPECIALS

SIDEWALK SALE

WEDNESDAY - SATURDAY 12TH-15TH



SOME EXCLUSIONS

CAMPING & PICNIC ITEMS SUPER CHEAP

(208) 369-4215

116 E MAIN ST, EMMETT, ID 83617



www.emmettcherryfestival.com

Cherry Festival

Don't Miss the Cherry Festival Art Show

15th Annual Cherry Festival Art Competition

The Emmett Community Arts Commission was initiated in an effort to promote the arts in Gem County and to bring awareness of the very talented artisans within the area.

One of their projects is the annual Cherry Festival

Art Competition. They will host the 15th Annual Show during Cherry Festival, June 12 – 15. It will be held in the foyer of City Hall, just across the street from the City Park.

It's open to artist from 16 years and up dealing in design, drawing, painting,

printmaking, photography and mixed media. Artist are welcome to enter three pieces into the show for just \$5 per piece. Entries will be accepted June 10 from noon to 6:30 p.m.

If you are interested or know of anyone who is please visit the



Emmett Community Arts Commission Facebook page to download the prospectus.

All You Can Eat Breakfast!

Emmett Kiwanis Pancake Breakfast 7 a.m. – 12 noon,
Saturday, June 15 At the Gem County Senior Center

The Kiwanis will serve pancakes, sausage links,
eggs, biscuits and gravy and a beverage. *

Prices are: Ages 12 & Under \$5 for All You Can Eat;
Adult 13 & Up \$8 for All You Can Eat

The Gem County Senior Center, 719 S. Johns Ave.
Contact Denise Sorenson 208-781-2148.

* Breakfast food items were donated by the Emmett Albertsons



STILLWATER
— HOMES & INTERIORS LLC —

**New Construction
Remodels
Siding
Custom Cabinetry
&
Woodwork**

208-477-7173



**Animal Medical Center
of Emmett**

Daniel Dombroski, DVM

2588 Waterwheel Rd
Emmett, ID
208-365-5396

Hours:
7am- 6pm Mon-Fri
8am-Noon Sat
**Emergency Care
Available**
Large & Small
Animal Services!



Welcoming New Clients!



85th EMMETT CHERRY FESTIVAL JUNE 2019



Emmett Lions Car Show

**Saturday, June 15,
8 a.m. – 3 p.m.**

Look for over 100 Classic Cars lining Main Street in front of the Gem County Courthouse.

The Emmett Lions Cherry Festival Car Show is a favorite tradition.

There is no entry fee for vehicles to enter the show.



Kids pick their favorite car!

Kids will have the opportunity to choose their favorite car for the “Kid’s Choice” award

Organizers will sell T-shirts for the annual July “Show & Shine” Emmett Car Show.

The July show will have over 1,000 classic and vintage vehicles at Emmett City Park.

Contact Mike Kreiter at 208-369-1110.



Gem County Historical Museum

The Gem County Historical Museum
Cherry Festival Hours: 10 a.m. to 5 p.m., Wednesday, June 12 through Saturday, June 15.

See indoor and outdoor displays of Gem County’s history and Cherry Orchard History from the Valley of Plenty.

The museum is at 501 E. First St. Across from the police station.

For information contact Meg Davis 208-365-9530 or 208-365-4340.





www.emmettcherryfestival.com

Cherry Festival

Fireman Hose Competition

Watch Local Teams and Individuals Compete

9 a.m. to 1 p.m., Saturday, June 15

Corner of Main St. and McKinley Ave.

The local Fireman's Fire-hose Competition will take place at Cherry Festival Saturday morning. The hose competition are local teams and individuals who com-

pete in this one-of-a-kind event. The timed event will require strength, accuracy and teamwork using firemen's equipment and skills.

The Fireman Hose Competition is coordinated by the Gem County Fire Department.

For information contact Gem County Fire Chief Rick Welch at 208-365-2012 or email rwelch@gemfireems.org



36th Annual Quilt Show

Thursday

Friday

Saturday

10 a.m. to 5 p.m.

Valley of Plenty Quilters

The Valley of Plenty Quilters will hold their Annual Quilt Show from 10 a.m. to 5 p.m., Thursday through Saturday, June 13, 14, 15 at the Emmett Middle School, 301 E. Fourth St.

Admission is \$4 per person. Under 12 years old, free.

Guests will be treated to over 150 quilts, vendors, raffles, general store and so much more. There will also be a chance to purchase tickets to win the 2019 raffle quilt. The raffle quilt will be displayed at various locations around Emmett.



Net profits from the General Store and a third of all admissions are designated to benefit Gem

County and local organizations.

For questions about Cherry Festival quilt en-

tries, contact Sharon Boatman, 208-284-4610, or Londa DeMasters at 208-365-5228.



Thank You

Cherry Festival 2019 Sponsors & Supporters!

Presenting Sponsor

D & B Supply; Day Sponsor (Wed.)
Valor Health; Day Sponsor (Thurs.)
Idaho Pizza Co.; Day Advertiser (Fri.)
Idaho Army National Guard; Day Sponsor (Sat.)
Evans Realty; Main Stage Sponsor
Corwin Ford; Stage Sponsor
Albertsons; Stage Sponsor
Committed Events; Entertainment Sponsor
Idaho Power; Media Sponsor
Messenger Index; Media Sponsor
Cumulus; Media Sponsor
Tom Scott Communication Shop; Media Sponsor

Gem County Gazette; Pie Eating Contest
River's Edge Rehabilitation; Pit Spit
Albertsons; Parade Sponsor
Idaho Army National Guard; Golf Cart Sponsor
Alliance Title; Golf Cart Sponsor
Rodda Paint; Contributing Sponsor
Emmett Sanitation; Contributing Sponsor
Goff's Plumbing; Contributing Sponsor
Mackey Electric; Contributing Sponsor
Squaw Butte Signs; Contributing Sponsor
Gem County Rec District; Contributing Sponsor
D&S; Contributing Sponsor
City of Emmett and Contributing Sponsor Gem County





www.emmettcherryfestival.com

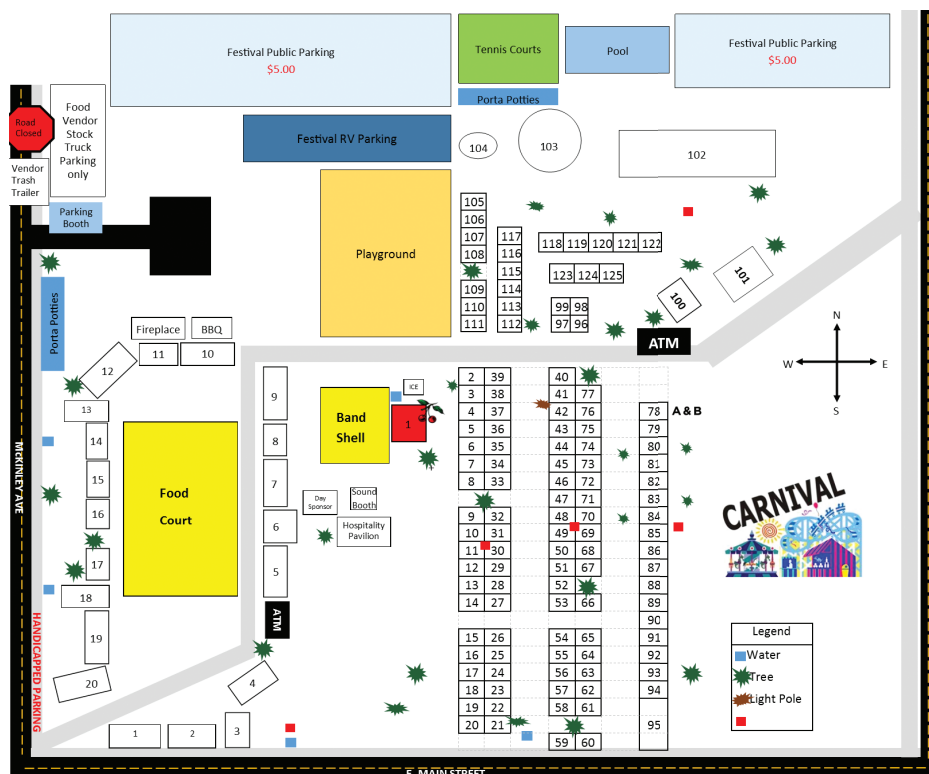
Cherry Festival

Cherry Festival Vendor Map

Find exactly who you are looking for!

Vendor Booth Listings

- 1** – Gem County Chamber
- 2 & 3** – Glamor
- 4** – The Arrow Head
- 5** – Vicci Moto Cherry Festival Merchandise
- 6 & 7** – Tie Dye Sweetie Pie
- 8** – Scentys
- 9 & 10** – Webb's Home Store
- 11 – 14** – Finish Line
- 15** – Flagpole Farm
- 16** – Simply Stained Shop
- 17** – Paparazzi Accessories
- 18** – Renewable Energy NW, LLC
- 19 & 20** – Community Bible Church
- 21 & 22** – Bad Metals, LLC
- 23** – Medicare Solutions of Idaho
- 24** – Alpha Home Pest Control
- 25** – Joski Insurance Inc.
- 26** – Designed For You Face Painting
- 27 & 28** – Bliss by Bling
- 29** – Digi-Comm/Tech-Finity
- 30** – Color Street
- 31** – Alpha Home Systems
- 32** – Mama Cielas
- 33** – Humble Home
- 34** – Absolutely Marvelous Treasures
- 35** – Country Strong Ammo Jewelry
- 36** – Sixpence Sweets-Habitat for Humanity
- 37** – Orgami Owl
- 38 & 39** – Young's Store
- 40 & 41** – Calvary Chapel of Emmett
- 42** – Save the Day Seasonings
- 43** – Branding Iron Foods
- 44** – Valley Family Health
- 45** – Foundation Support-works of Idaho
- 46** – Rodda Paint
- 47 & 48** – Ecologic Arts, LLC
- 49** – Crochet by Stacie
- 50 & 51** – New Life Christian Center
- 52 & 53** – Robbins & Neth Sunglasses



- 54 & 55** – Click Heat
- 56 – 58** – Gemstar Jewelry
- 59 & 60** – Bears Knight Out
- 61 & 62** – Idaho Blade Runner
- 63** – Bathfitter
- 64** – Infinite Oil Bar
- 65** – Santiago Monte Vista Estates
- 66** – Moonlight Mystics
- 67 & 68** – Bella Dree Marketing
- 69** – Ty Smith Arts
- 70 & 71** – JC Products
- 72** – Waterdaddy Inc.
- 73** – Cutco Cutlery
- 74** – Costco
- 75** – Amy's Glass
- 76** – Tuttles Old Fashioned Kettle Corn
- 77** – Papa Styles Leather
- 78** – Miguel's Airbrushing
- 78B** – Messenger Index
- 79 & 80** – Champion Windows of Boise
- 81** – Crack a Smile Face Painting

- 82 & 83** – Colors and Origins
- 84** – Reed's Dairy Boise
- 85** – Millcreek Wireless
- 86 & 87** – Idaho Hat Company
- 88** – Gideon International
- 89 & 90** – Toppers & Tats
- 91 & 92** – G&L Sales
- 93** – Modern Windows, LLC
- 94** – I Feel Good Today
- 95 a,b,c** – Idaho Army National Guard
- 96 & 97** – Crystal Rose Hobby/Henna Tattoos
- 98** – Hempworx
- 99** – LeafGuard of Idaho
- 100** – Hearing Connection
- 101** – Double Jump, LLC
- 102** – Pagano's Pony Rides
- 103** – Bobble Bay (water balls)
- 104** – Petting Zoo
- 105 & 106** – Jehovah's Witnesses
- 107** – USDA Forest Service Emmett Ranger District

- 108** – Idaho Kids Dentistry & Orthodontics
- 109** – Third District Guardian
- 110 & 111** – Pacari
- 112** – The Real Estate Shop
- 113 & 114** – Awakening Eye
- 115** – Lilla Rose Hair Jewelry
- 116** – LM Wildlife Carvings
- 117** – Repurposed Fabric Creations
- 118** – Star Firefighters Local 4716
- 119** – Riverside Church
- 120** – Center Stage Puppets & Toys
- 121 & 122** – Pacari 2
- 123** – Windy's Whip & Drizzle
- 124** – Exclusive Wireless - T-Mobile
- 125** – Senegence (Lipsense)

Cherry Festival Fun Run Walk

40th year of the Kiwanis sponsored event



Saturday, June 15 at 8 a.m.

The Louie Gorrone Memorial Kiwanis-Cherry Festival 5K Fun Run & Walk begins at 8 a.m., Saturday, June 15 at the Emmett City Park. The run is hosted by the Kiwanis Club of Emmett. The fun run has been in memory of long-time past Kiwanis member Louie Gorrone.



NEW LIFE CHRISTIAN CENTER

Sunday Morning 8:30 and 10:30

Fridays at 6:30 pm

(the 10:30 include full staff nursery and Sunday School for the kids)

New Life Ministry Institute meets

Sunday at 4:00

Wednesday Family Night at 6:30

(adult Bible study and Kings kids)

We also offer many home group Bible studies throughout the week!

Youth group meets Sunday at 6:00 pm

212 S. Boise Ave.
365-2918

ROCKY MOUNTAIN

True Value®
HARDWARE STORE

**Help is Just
Around The Corner**

Bill & Angie Kurta
Owners

**132 S. Washington Ave.,
Emmett**

208-365-3135

**Rocky Mountain
Mechanical Inc.**

**A/C • Plumbing
Heating • Boilers**

RESIDENTIAL • COMMERCIAL • INDUSTRIAL

208-365-PIPE
(7473)

ID State License #C10618

Bill Kurta

License, Bonded & Insured



1902081



www.emmettcherryfestival.com

Cherry Festival

Pie faces and spitting pits!

Pie Eating Contest and Cherry Pit Spit Contest



How quick can you eat a cherry pie?

Saturday, June 15 at 2 p.m., on the Entertainment Stage. Children and adults can step up and compete with their age group. This is a fun competition,

especially for those who love a lot of cherry pie.

The Cherry Pie Eating Contest is sponsored by River's Edge Rehabilitation.

How far can you spit your cherry pit?

Eat the cherry and spit the pit. The pit that measures the longest is the winner by age group. It's easy for all ages.

Saturday, June 15 at 12 Noon, on the Courthouse front steps.

The Cherry Pit Spit Contest, sponsored by Albertsons.

Who doesn't love trains?

Free event especially suited for children and families. Smiles are guaranteed!

Show hours: 1-7 p.m., Friday, June 14 and 12 Noon to 7 p.m., Saturday, June 15

The 6th Emmett Cherry Festival Train Show, June 14-15, in the Gem County Recreation District building, 107 E. Main St.

The Caldwell Model Railroad Club & Historical Society will display their two portable layouts: one N scale and one HO scale.

Learn about model trains, railroading in Idaho, and the club's permanent layouts in their building in Caldwell. The two portables are perfect examples of a small home layout utilizing 4x8 plywood and even a bedroom door. While the club's permanent layouts measure 12x15 feet and 25x50 feet..

For info, contact Coordinator Rob Saunders at 208-615-1668.



Thank You Volunteers!

Volunteers may work many long hours or just do a few small tasks, but every one of them is what makes the Emmett Cherry Festival the oldest continuous festival in Gem County!

Every year at festival time, volunteers ask "What can I do?" Your dedicated volunteerism effort, even the smallest of tasks, do not go unnoticed.

Thank you for making the 2019 Emmett Cherry Festival successful!



Steaks * Prime Rib * Salmon
Ale * Cocktails
Creative Sides * Decadent Desserts

NOW OPEN
Monday through Saturday
3 to 11 p.m.

Reservations Recommended
208-369-4740

101 East Main Street - Emmett

*Serving Gem County And Surrounding
Area Families Since 1906*

POTTER
Funeral Chapel



MONUCARE

Yearly headstone cleaning, made simple.

The simple solution to keeping a loved one's
headstone cared for and presentable,
year after year.

John L. Buck 365-4491 Tom Buck

228 E. Main St., P.O. Box 697, Emmett, Idaho 83617

1903830



www.emmettcherryfestival.com

Cherry Festival

FAQs & Emergency Contacts

85th Emmett Cherry Festival Wednesday, June 12 to Saturday, June 15, 2019

Frequently asked questions

84th Emmett Cherry Festival
Wednesday, June 14 to
Saturday, June 15, 2019

Festival Hours

11a.m. – 10 p.m.
Wednesday and Thursday
11a.m. – 11p.m. Friday
and Saturday

Carnival Rides begin at 1
p.m. Wednesday through
Friday and 12 Noon on
Saturday

How Do I Get to the Festival?

Emmett City Park, 501 E.
Main St., is at East Main
Street and South Johns
Avenue. Take Hwy 16 or Hwy
52 to Emmett Turn north on
South Johns Avenue (near
Albertsons) Drive straight to
Emmett City Park

NO DOGS in the Emmett City Park during Cherry Festival

(service dogs are allowed)

ATM Machines

Main Food Court
Carnival Area

Wheelchair Parking

On the SW corner of
McKinley & Main St.

Found or Missing Children

Idaho National Guard Booth
95 will serve as the central
location for found or missing
children

Emergency Medical Services

Urgent Care at Valor Health,
1102 E. Locust, Emmett
Call 208-365-6004
Hours: 8 a.m. to 8 p.m.,
7 Days a Week

Security

In order to provide a
safe, secure and pleasant
environment, we ask for your
cooperation by complying
with these Rules of Conduct.

Cherry Festival is policed by the Emmett Police Department 365-6055

501 E. Main St.
(across the street from the
park)

24-hour Dispatch:

(208) 365-3521,
Emergency: 911
Security

Possession of any article
defined as a weapon will
not be allowed. Clothing
inappropriate to a family
environment which causes
alarm to guests will not be
allowed (i.e. gang related
clothing, attire, or the flying

of any colors)

Standing or walking in
large groups that block the
movement of park patrons
or cause inconvenience to
others will not be allowed.
Use of unduly, loud,
obscene, or threatening
language or gestures or
other unreasonable, noisy
behavior will not be allowed.
No pets allowed (Service
Dogs Are Permitted).
No bicycles, skateboards,
rollerblades, mopeds, etc.

We appreciate your cooperation. Enjoy your visit!

Office - Gem County Chamber
& Emmett Cherry Festival
1022 S. Washington Ave.,
Emmett, 208-365-3485.

PRINTING - ADVERTISING SPECIALTIES

Your Name On This

Advertising Specialties & Promotional Products





208.631-5830
1105 S. Washington Ave.

**Reliable Service
with a Smile!**

Services

- Custom Embroidery
- Screen Printing
- Dye Sublimation
- Vinyl • Copies & Faxes
- Notary Services
- Large Format Printing

Products

- Shirts, Hats, Bags, Mugs, Glasses
- Balls, Plaques, Pens
- Personalized Gifts
- Business Cards
- HUSKIE Gear
- Buttons & More!

Come In & Check Us Out!
You can't be everywhere... but YOUR NAME can!

www.ynotadvertising.net



85th EMMETT CHERRY FESTIVAL JUNE 2019



Cherry Festival Sale

June 12th-15th

HUGE SAVINGS!



**Idaho
Central**
CREDIT UNION

SPECIAL INTEREST RATES

Hurry, offers expire June 15, 2019!

SALES INFO: 208-365-5050

www.haniganautosales.com

ADDRESS

1550 S. Washington, Emmett, Id 83617

SERVICE HOURS

Mon-Fri 8:00 am – 5:30 pm • Sat-Sun Close

SHOP: 208-365-0107



like us on Facebook

1765581

Know who
loves the
Emmett
Cherry
Festival?

D&B knows.

We do. Celebrate the Festival with us by purchasing a
souvenir **20-ounce** bucket of cherries for **\$8**.

Available while supplies last at the Chamber of
Commerce booth on the east side of the band shell.



D&B SUPPLY. PROUD SPONSORS OF THE EMMETT CHERRY FESTIVAL.

D & B SUPPLY

myDBsupply.com