



**Gem County**  
Chamber of Commerce

## *2018-2019 Directory & Visitor's Guide*



**AMAZING  
Idaho  
Real Estate**

*Here for all your  
Real Estate needs!  
Visit us on page 28*

510 S. Washington Ave, Emmett | [AmazingIdahoRealEstate.com](http://AmazingIdahoRealEstate.com) | 208-365-9500







*Call The Evans Realty Team For  
All Your Real Estate Needs!*

# EVANS REALTY LLC

**1302 S. WASHINGTON  
OFFICE 208-365-4495  
1-800-275-4495  
Fax 208-365-5022**



- Current #1 Producing Real Estate Company in Gem County
- Servicing Gem County and the surrounding areas for over 33 years
- Specialized in all types of properties
- Active participants within the community:  
Cherry Festival Day Sponsor, Gem County Chamber of Commerce  
Emmett Valley Friendship Coalition, EHS Sports Booster Club Sponsors  
Adopt a Highway, Emmett Rotary Club

## WELCOME TO EMMETT

*Specializing in all types of property.....*



***“Our Experience Makes the Difference”  
“Professional & Caring Service”***

Teena Evans-Turner, Broker, Owner .....	208-861-9090	Tawnya Stallions .....	208-830-9652
John Evans, Assoc. Broker, Owner .....	208-365-8545	Kyle Stratton .....	208-870-8075
Debbie Anderson .....	208-631-8809	John Turner .....	208-365-9099
Gina Banister, Assoc. Broker.....	208-283-2946	Valerie Wilson .....	208-365-8020
Sherri Darnell .....	208-365-8449	Travis Whittemore .....	208-899-6149
Matt Heath.....	208-365-7573	Brenda Wilson Moran .....	208-800-1202
Mickie Park .....	208-284-7071	Sharon Bullock .....	208-369-1237
Jon Powell, Assoc. Broker.....	208-369-1200	Kassedy Elsberry.....	208-369-1324
Ryan Welch.....	208-880-9974		





## **Santiago Monte Vista**

*From the moment you walk in, you'll know that you are home.  
And you'll have peace of mind that you've selected a home  
backed by the solid reputation of Santiago Sales.*

*We are a proud member of  
Gem County's Chamber of Commerce*

**701 Monte Vista Drive Emmett, ID 83617**





# **Tires** **LES SCHWAB**

TIRES | WHEELS | SHOCKS | BRAKES | BATTERIES | ALIGNMENT | TIRE SIPING

**FREE**  
PEACE OF  
MIND  
**TIRE**  
PROTECTION

WHATEVER THE ROAD THROWS AT YOU -  
FROM POTHOLES TO NAILS -  
IF YOUR TIRE IS DAMAGED FROM ANY ROAD HAZARD,  
WE WILL REPLACE THE VALUE OF YOUR TIRE.

## **FREE** LIFETIME TIRE AND MILEAGE CARE

TO HELP YOU GET MORE MILES OUT OF YOUR  
TIRES AND MORE MILES PER GALLON OF GAS.

- **FREE** FLAT TIRE REPAIRS
- **FREE** TIRE ROTATIONS
- **FREE** TIRE REBALANCING
- **FREE** AIR CHECKS
- **FREE** BRAKE & ALIGNMENT CHECKS

**HUNDREDS OF LES SCHWAB LOCATIONS TO SERVE YOU!**



**(208) 365-3548**

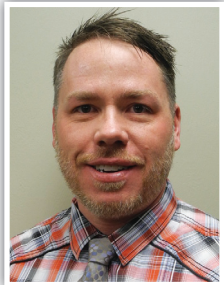
419 N Washington  
Emmett, ID 83617  
[www.LesSchwab.com](http://www.LesSchwab.com)





# GEM COUNTY CHAMBER DIRECTORY & VISITOR GUIDE

## Welcome to Gem County!



Named in representation of our Great State of Idaho — the “Gem State” — Gem County was established in 1915. Trappers came through the area in the early 1800’s. Prospectors and miners traveled through on way to the gold rush in the Boise Basin area some 50-years later. Irrigation was then developed along the Payette River, which flows through the heart of our community at present day. Black Canyon Dam

and Recreation Area on the Payette River was constructed in the early 1920s and is just east of Emmett — the primary city within Gem County. In the early 1900’s, fruit packing operations adopted the moniker “Valley of Plenty” due to the crop fertility of the valley. During the mining era the valley was known as the “garden.” To present day, the Gem Community maintains this spirit for cultivation. It is the torch to which our local Chamber — the Gem County Chamber of Commerce — carries for our current member base. The members are the life blood of our community, along with the youth and our work forces. It truly is an evolving business landscape. It will continue to be the building block to our future. Gem County has many Economic Development opportunities before it with consideration to growth and the further cultivation-and-development of our natural resources — our youth, our work forces, the foothills and the contour of the landscape which surrounds us, the back-country opportunities by land and through the air and our unfolding scenic-river pathways, just to name a few. As a Chamber, we have established our strategic goals to continue down a path which represents our members to the fullest through networking opportunities, relationship building and flourishing unique historical traditions which are a direct connection to the past and the promise for our future. The business and community landscape will continue to evolve and change as it has over the past two-hundred years. Change is a constant and something we must grow accustomed to, welcome and incorporate into our daily lives. Progressing the right way is key to long-term community and individual success. Hop on board with us — get involved — and help us cultivate-and-grow the businesses and relationships in our community in the most insightful and intelligent ways possible so that all may benefit!

For more information, please visit us at: <http://emmettidaho.com>

Best regards,

**Jefferson M. Jenkins**

Past President, Chamber Board of Directors



**Gem County**  
Chamber of Commerce

## Table of Contents

Dedicated to Serving the	
Gem County Business Community.....	6
Chamber Ambassadors .....	8
2019 Ambassador Program.....	10
Why Gem County? .....	11
Gem County Chamber Of Commerce	
Gem Economic Development .....	13
Gem County Economic Development	
Specialist .....	14
Education.....	16 & 17
Post Secondary Education	
Opportunities .....	18
Emmett Cherry Festival .....	19
Annual Events .....	20 & 21
Attractions.....	22, 23 & 24
Emmett Business in 1893.....	25
Annual Events in Gem County .....	26 & 27

## Member Listings

Accountant - Assisted Living .....	29
Attorneys - Building Supplies .....	30
Business - Coal Sales .....	31
Coffee Shop - Counseling .....	34
Dental - Entertainment .....	35
Equipment - Farm .....	40
Farm & Ranch - Florist .....	43
Food - Health .....	46
Health/Fitness - Hospice .....	48
Hospital - Liquor.....	50
Livestock - Medical & Health Services ....	51
Medical Management - Pest Control .....	52
Photographer - Real Estate .....	53
Realtor - Residential .....	54
Restaurant - Service Organization ....	55
Siding - Wireless Communication .....	56



## DEDICATED TO SERVING THE GEM COUNTY BUSINESS COMMUNITY

### Gem County Chamber Staff



**Krista Cole**  
Executive Director



**Tina Hefley**  
Administrative Assistant



**Jack**  
Office Greeter

### Gem County Chamber of Commerce Board of Directors 2019



**Pam Beattie**  
Beattie Photography  
Term: 2018-2019



**1st Sgt Thomas Butler**  
Idaho Army National Guard  
Term: 2018-2019



**Toni Buzzard**  
Edward Jones Investments  
Term: 2019-2020



**Candy Coltrin**  
Idaho Pizza Company  
Term: 2019-2020



**Stacy Gulley**  
Term: 2018-2019



**Amy Helmick**  
Emmett Floral Company  
Term: 2019-2020



**Cassie Hope**  
The Cottages  
Term: 2019-2020



**Stuart Jensen**  
Payette River Natural Beef  
Term: 2018-2019

### Gem County Chamber of Commerce Board of Directors

Contact us: 1022 S. Washington Ave., Emmett, ID • Phone 208-365-3485 Web: [www.emmettidaho.com](http://www.emmettidaho.com)



# CUSTOM PUMP SERVICES



**LARGE  
OR SMALL  
WE DO IT ALL!**

**WATER PUMP SALES & SERVICE**  
**(208) 369-0859**  
**custompumpservices.com**

**YOUR FIRST  
CH<sub>2</sub>OICE**



for all your water  
pump needs

**A Local Family Owned and  
Operated Business!**

- New System Installation
- Service & Repair
- Residential & Irrigation
- Well & Pump Inspections
- Pumps & Tanks
- Mechanical Hand Pumps
- Solar & Wind Systems
- Water Treatment Systems





## CHAMBER AMBASSADORS

### 2018 Ambassador of the Year



The Gem County Chamber of Commerce has named Lori Carrillo, Financial Representative at First Interstate Bank, as the 2018 Ambassador of the Year.

Lori has been an ambassador with the Gem County Chamber since 2015. As an Ambassador, she has been at GCCC Ribbon Cuttings, helped at MidDay Mingles, volunteered at the Cherry Festival and so much more. Lori helps deliver new and returning GCCC member packets and has frequent contact with member businesses and serves as a mentor to both new and returning Chamber members.

Celebrating 13 years at First Interstate Bank, she helps people achieve financial needs and goals, open accounts (personal and business), personal loans, home equity loans and lines, auto loans, etc.

Being born and raised in Emmett, Lori has had the opportunity to really get to know the people of the town that she has always been a part of. She says, "I truly enjoy being an Ambassador. I like the interaction with fellow members and helping new members. It is an opportunity to make a difference in the community."

"Lori is the absolute best!" says Krista Cole, GCCC Executive Director. "We can always count on Lori to be the first to volunteer to help at events with her warm and inviting smile. She is an invaluable part of the GCCC and is very much appreciated. This award is well-deserved."

## HOW AMBASSADORS HELP THE GCCC & COMMUNITY

- Actively promote the GCCC in the community
- Refer prospective members to the GCCC for follow-up
- Provide assistance to new GCCC members
- Connect new members to the GCCC
- Help existing GCCC members remain active and involved
- Act as Hosts at GCCC events and activities
- Greet and introduce new members and guests to GCCC members
- Answer questions about GCCC membership and participation
- Assist with registration and activities at events and meetings
- Welcome new businesses and organizations at their place of business
- Represent the GCCC at events: Ribbon Cuttings, Grand Openings, Community Events
- Attend GCCC meetings and events when able to do so, no mandatory required events

## AMBASSADORS MEETINGS

The Ambassadors meet at the GCCC office on the third (3rd) Tuesday of every month from 2:00 p.m. to 3:30 p.m. The location may change, with notice, from time to time. Participation in monthly meetings is encouraged. The purpose of the monthly meeting is to have fun, network and discuss opportunities and upcoming events.



**Come In & Check Out our Great Selection of Used Cars & Trucks.**

**WE ARE ALSO YOUR LOCAL  
FULL SERVICE REPAIR SHOP**

- Engine Diagnostic • Tune-ups • Clutches
- Brakes • Air Conditioning • Timing Belts
- Fuel Injection • Transmission Flush
- We Turn Brake Rotors & Flywheels
- 30K-60K-90K Maintenance Services



**FULL SERVICE REPAIR SHOP • ALL MAKES AND MODELS • FOREIGN AND DOMESTIC**

**CALL: 208-365-5050**

*Hanigan Auto Sales is founded on trust, integrity, and respect. We are proud to offer these values in our sales and business practices so our customers keep coming back.*

**[www.haniganautosales.com](http://www.haniganautosales.com)**

**ADDRESS:**

1550 S. Washington  
Emmett, Id 83617



like us on  
facebook

**SERVICE HOURS**

Mon-Fri 8:00 am – 5:30 pm  
Sat-Sun Close

1842471



## 2019 AMBASSADOR PROGRAM

### THE GCCC AMBASSADOR COMMITTEE

The Gem County Chamber of Commerce Ambassadors are the “Welcome Wagon” of the GCCC. Members are business and organizational leaders who volunteer to act as an extension of the Chamber team. Ambassadors are committed to helping the Gem County Chamber of Commerce fulfill its mission of building a strong, vital business environment and an exceptional community. The Ambassador program is a premier business-networking program and the Ambassadors are the pillars of the Chamber’s volunteer activities.



**Allan Perren**  
Heart 'n Home Hospice



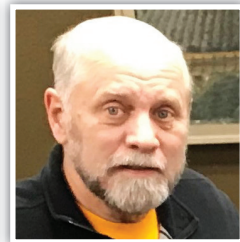
**Ben Holmes**  
The Insurance Group



**Colleen Ohran**  
Volunteer



**Dallas Downing**  
Sawtooth Land Surveying



**Dave Fisher**  
Wildsage Publishing



**Donald Azevedo**  
New York Life



**Fleda Bennie**  
Amazing Idaho Real Estate



**Gordon Petrie**  
Mayor



**Jen Frieboes**  
Meadow View Senior Living



**Kari Marsh**  
Community Partnerships



**Laura Pratt**  
Community Partnerships



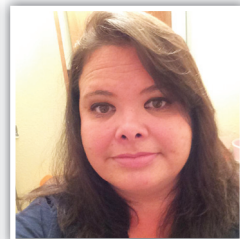
**Lori Carrillo**  
First Interstate Bank



**Melissa Conklin**  
Idaho Dept. of Labor



**Nancy Puccio**  
Valley of Plenty Quilters



**Nikki Rollins**  
Gem Recovery Center



**Susan Ness**  
Signature Hospice



**Teena Turner**  
Evans Realty LLC



**Tempe McFarlane**  
Coldwell Banker Tomlinson



**Wendi Kern**  
First Interstate Bank

## WHY GEM COUNTY?



### Gem County, Idaho

Population: 17,379

Labor Force: 50.4%

Bachelor's degree or higher: 15.3%

Household median income: \$40,767

Owner occupied 72%

Average Commute Travel Time: 27.2 minutes

### History

In the early 1900s fruit packers adopted the label of "Valley of Plenty" because of the fertility of the Valley. During the mining era the valley was known as the "garden" for the mining region. In 1883 James Wardwell had the town platted, and in 1900 the town was incorporated as Emmett. After the closing of the Pearl mines in 1906, the power lines were extended to Emmett. A series of irrigation projects made it possible for more rapid expansion of the town as the major service center for a farming and fruit growing valley. The period from 1900 to 1909 was a time of rapid growth and development for the Emmett area. During this period, the town was incorporated and outlying additions were taken into the city. A city hall which housed the fire department was built. Coal oil lamps gave way to the twentieth century electric lights, telephones were installed, a waterworks and sewer system were laid out, and a new bridge

spanned the river. (Contact the Historical Museum for your schedules and information 208-365-9530)

### Why Gem County?

- Known as the "Valley of Plenty"
- Emmett ranked No. 29 in 100 small U.S. Cities, From America's Top 100 list, population 45,000 and under.
- Close to Boise & the Treasure Valley
- Affordable to live and raise a family
- Neighbors know neighbors
- Rich harvest for farmers and shoppers alike
- Businesses of all shapes and sizes
- Hometown friendly lifestyle

### Gem County's Community Profiles

- **Emmett** is the only incorporated city in Gem County and the most populated.
- **Letha** is located west of Emmett in the Valley.
- **Montour** once vied for prominence in the area but was flooded and today is an important Wildfire area.
- **Sweet** is located above Black Canyon Reservoir near the base of Squaw Butte.
- **Ola** is a mountain community rich in farming and ranching ways of life.

### Agriculture

- Number of farms 830
- Land in Farms 178,984 acres
- Average size farm 216 acres

### Climate

Emmett enjoys a moderate climate

- Approximately 12" of rain per year
- Approximately 22" of snow per year
- Approximately 44 days of precipitation
- Approximately 210 sunny days per year
- July: Average - 91 degrees / High — 92 degrees
- January: Low temperatures around 22 degrees
- Elevation, Emmett: 2,362 above sea level



Group One

Sotheby's  
INTERNATIONAL REALTY



# REAL ESTATE AT ITS BEST



[BOISEANDBEYOND.COM](http://BOISEANDBEYOND.COM)

**Patti Bowman, Asso Broker**  
**208-365-0210**

**Lisa Bowman Zeiter Asso Broker**  
**208-365-7506**

[Lisa@LisaZeiter.com](mailto:Lisa@LisaZeiter.com)

## GEM COUNTY CHAMBER OF COMMERCE GEM ECONOMIC DEVELOPMENT



We are The Valley of Plenty! The Gem Community is where you want to live and be in business. There are “Plenty” of opportunities, “Plenty” of land and “Plenty” of friendly folks you will be proud to call your neighbors, co-workers and friends. Our quality of life, low crime, and ready workforce makes the Gem Community a great choice in establishing or relocating a business. We are nestled in our own valley, surrounded by foothills with fabulous views of the Butte. Located just minutes from Boise and the Treasure Valley, we are a gateway to the Idaho backcountry. The majestic Payette River running through downtown Emmett provides ample opportunities for recreation enthusiasts and our many parks provide relaxation for young and old alike. Our Cherry Festival, Cruise Night and other annual events are regional attractions, so come enjoy yourself and see our vision for the future — walkable and sustainable communities that embrace industry and technology while maintaining simplicity and quietness for one and all. Agriculture Gem County is home to an undeniable abundance of agricultural activity. Together with our local farmers, we work to promote the expansion of agricultural production throughout the region, while simultaneously drawing attention to the high-quality foods our local residents create. Small farms are on the rise and unique selling propositions and partnerships

have emerged. Food Processing Gem County is an ideal location for food processing companies, thanks to our proximity to the fields and farmers who produce thousands of metric tons of meat, produce, and dairy products. Farmers create working relationships with food processors, either directly or via a third party proxy. In turn, food destined for supermarket shelves across the globe heads to the processing facilities. Home Based Businesses Entrepreneurs and small businesses serve as an important and growing part of our local economy. Home based workers partner with clients and other businesses across the globe. Revenue earned from these sources benefits Gem County, and allows residents to remain and draw an income in the Valley of Plenty. Industrial/ Manufacturing We are experiencing growth with the manufacturing sector. As manufacturers are established and expand within the region, the small producers of raw products in Gem County are able to forge mutually-beneficial trade relationships with the manufacturers. Our local airport offers yet another opportunity for related expansion. Recreation With its lush forests, exquisite waterways, and beautiful mountains, it comes as no surprise that Idaho, and Gem County, is a popular recreation destination. The Gem Community is encouraging the development of recreational opportunities including nonmotorized pathways.



## GEM COUNTY ECONOMIC DEVELOPMENT SPECIALIST

### Welcome to the Valley of Plenty!

**By Krista Cole**

*Gem Community Economic  
Development Specialist*

This is the Place to Make Home and Business. If 'where you live' is important to you, look no further than Gem County, The Valley of Plenty. From the first time you gaze over the valley from Freezeout Hill, you know you are home and this is where you want to start or move your business. Opportunities are plentiful and we are happy to have you here.

Our county includes the county seat of Emmett and communities of Ola, Sweet, Letha and Montour. In Gem County you will find verdant agricultural land, manufacturing and industrial opportunities, recreation from the river to the mountains and a vibrant historic downtown. Lower taxes, expansive available land, cooperative government leaders and a ready workforce make the City of Emmett and Gem County the ideal community for your established business to relocate or an entrepreneur looking where to establish their dream.

Our Historic Downtown has seen exciting revitalization and is a quaint destination for locals and tourism. The Shadow Butte Industrial Park has highway frontage with space still available to start or expand your business. Our airport is yet another gem with loads of potential for growth and related industries to explore. Agricultural opportunities are abundant and include farm land, processing, orchards and pasture acreages.

Tourism and recreation in Idaho are bountiful. In Gem County we have the Payette River, Black Canyon Reservoir, Little Gem Cycle Park, Squaw Butte, and Gem Sports Island among the existing 'playgrounds' in the county. Day trips and extended stays are on the rise and the potential for industries revolving around tourism and recreation are endless here.



Our community boasts the longest running Idaho community event, the Emmett Cherry Festival, which is held each June and draws over 50,000 people over 4 days. Ever popular events like Cruise Night Show & Shine, Emmett Harvest Street Fair, The River through Time, Gem/Boise County Fair all attract visitors and showcase our community.

We continue to plan for smart growth with a vision of respecting our heritage while welcoming new and expanding business. Give us a call or drop us a line, this is your place to call home.

**Krista Cole**  
**Economic Development Specialist,**  
**Gem Community**  
**Gem County Chamber of Commerce**  
1022 S Washington Ave Emmett, ID 83617  
208-365-3485 Director@EmmettIdaho.com



# FARMERS<sup>SM</sup> INSURANCE



A. RALPH  
GURNEY

365-4150

Home – Automotive – Life – Annuities  
Business – Medical Insurance,  
Blue Cross-Regence & Select Health

1500 S WASHINGTON, STE.A, EMMETT, ID





## EDUCATION

### The Emmett School District

Committed to developing and supporting our instructional leaders.

#### We provide:

- In-district coaching and support for new staff.
- Funding for educational credits.
- Opportunities for growth both locally and, when possible, at national conferences.
- Collaboration opportunities are scheduled to ensure a culture of excellence in teaching and learning is maintained.

### Public Schools

#### 2 Elementary

- Kenneth Carberry Elementary School  
1950 E. 12th St.  
208-365-0839
- Shadow Butte Elementary School  
3900 W. Idaho Blvd.  
208-365-0877
- Ola Elementary School  
208-584-3589



- Sweet/Montour Elementary  
6600 Sweet Hwy  
208-584-3378

#### 3 Secondary

- Emmett Middle School  
301 E 4th St.  
208-365-2921
- Emmett High School  
721 W. 12th St.  
208-365-6323
- Black Canyon Alternative High School,  
400 S. Pine Ave. Ste. 2  
208-365-5552

#### 1 Professional Technical

- Payette River Technical Academy  
721 W. 12th St.  
208-365-0985





## **PRRTA** **Payette River Regional Technical Academy**

Professional Technical Education school authorized by the State of Idaho to deliver relevant and rigorous career training. PRRTA is a school of choice that Offers education to kids 7th through 12th grade. Help students become self-motivated, competent, lifelong learners that are equipped with the proper academic standards as well as the technological and problem solving skills necessary to become contributing members of society.

The school has three fundamental areas:

- 1) Career Development
- 2) Using technology to provide student choice
- 3) Providing advanced academic opportunities.

Accredited by the Northwest Accreditation Commission as an Idaho Public High School. Students may choose Payette River Regional Technical Academy to fulfill all of their academic needs to acquire a High School Diploma.

### ***Private School***

Calvary Christian Academy  
498 W. Idaho Blvd.  
208-365-2485







## POST SECONDARY EDUCATION OPPORTUNITIES

Whether you're looking for a certificate program or a Ph.D., Gem County is affluent with a well-educated workforce. Within a 45 minute drive of Emmett, you will find 11 different higher educational institutions.

### **Brown Mackie College**

9050 W. Overland Rd. Ste. 100, Boise, ID 83709  
— Located in Idaho's hub for commerce, banking, and government, Boise provides an ideal backdrop for a career-focused college.  
[brownmackie.edu/boise.aspx](http://brownmackie.edu/boise.aspx)

### **Boise State University**

1910 University Dr., Boise, ID 83725  
— Public, metropolitan research university offering an array of undergraduate degrees for more than 20,000 students.  
[boisestate.edu](http://boisestate.edu)

### **Stevens Henager College**

16819 N. Marketplace Blvd., Nampa, ID 83687  
[stevenshenager.edu](http://stevenshenager.edu)

### **College of Western Idaho**

5500 Opportunity Dr., Nampa, ID 83687  
— Open access, and comprehensive community college committed to providing affordable access to quality teaching and learning opportunities.  
[cwidaho.cc](http://cwidaho.cc)

### **Idaho State University-Meridian Campus**

1311 E. Central Dr., Meridian, ID 83642  
— Designated by the Idaho State Board of Education as having a primary state wide mission in the health sciences.  
[isu.edu/meridian](http://isu.edu/meridian)

### **Boise Bible College**

8695 W. Marigold St., Boise, ID 83714  
— Boise Bible College is theologically conservative.  
[boisebible.edu](http://boisebible.edu)

### **College of Idaho**

2112 Cleveland Blvd., Caldwell, ID 83605  
— The College of Idaho is the state's oldest private college.  
The college's PEAK curriculum challenges students to attain competencies in the four knowledge peaks, fine arts and humanities, natural sciences and mathematics, social sciences and history, and a professional field.  
[collegeofidaho.edu](http://collegeofidaho.edu)

### **Northwest Nazarene University**

623 S. University Blvd., Nampa, ID 83686  
— Nonprofit Christian university, offering more than 60 areas of study, master's degree programs in 11 disciplines, accelerated degree programs, concurrent credit for high school students, and a variety of continuing education credits.  
[nnu.edu](http://nnu.edu)

### **ITT Technical Institute**

12302 West Explorer Dr., Boise, ID 83713-1529  
[2.itt-tech.edu](http://2.itt-tech.edu)

### **Treasure Valley Community College**

650 College Rd., Ontario, OR 97914  
— Small class sizes and a wide variety of certificates and degrees, as well as locations in Ontario and Caldwell, we know how to help get you where you want to go. You are just starting, coming back, or starting over, TVCC can help you reach your goals.  
[tvcc.cc](http://tvcc.cc)

### **University of Phoenix-Idaho Campus**

1422 S. Tech Ln., Meridian, ID 83642  
— Boise, Idaho offers a variety of undergraduate and graduate degrees in Meridian including business, education, and criminal justice. This location also enrolls for a variety of programs in education, nursing, human services and technology.  
[phoenix.edu](http://phoenix.edu)

## EMMETT CHERRY FESTIVAL



### **Emmett Cherry Festival is Idaho's longest continually running Family-Friendly Festival!**

Since the 1930's, the community of Emmett and all of Gem County has gathered each June to celebrate the abundance of our valley. The year 2018 will be the 85th anniversary Cherry Festival celebration. The Emmett Cherry Festival is always held during the second full week of June. Events run throughout the community over eight days of celebration and fun. The

traditional Cherry Festival events, concerts and carnival all happen in the Emmett City Park starting on Wednesday through Saturday. Of the many, many things that sets the Emmett Cherry Festival apart from other events, most notably is the abundance of free entertainment and family friendly entertainment. There is no cost to enter, no admission or gate fees.

Many activities around the town include:

- Miss Gem County Pageant/  
Jr. Miss Pageant
- Cherry Festival Parade
- Cherry Pie Eating Contest
- Cherry Pit Spit
- Emmett Arts Commission  
Show & Competition
- Emmett Lions Car Show
- Fireman Hose Competition
- Cherry Festival Fun Run/Walk
- Valley of Plenty Quilters Quilt Show





## ANNUAL EVENTS



### Emmett Show and Shine

The Emmett Show and Shine is the most anticipated and has become the largest car show in the region. The third Saturday of July every year you will find over one thousand classic cars, muscle cars, hot rods, rat rods and any other type of car the owners want to show off, all in the Emmett City Park. Whether you have a car to show off or just want to look and remember or dream this show is free to spectators and car owners alike. You will also find a swap meet where that elusive item you have been looking for might be hidden and vendors selling everything from purses to jewelry and other must haves. We also have the famous Emmett Lions Club pancake breakfast. Between 7am and 11am we will serve thirteen hundred breakfasts of pancakes, scrambled eggs, ham, juice, coffee or milk. Then starting at 11am a BBQ lunch of hamburgers or hotdogs, chips and a drink is available. You can also find artists that will pinstripe your car or even a pair of high heels or a purse. They will stripe or letter just about anything. There is also a free concert in the band shell starting at 11am. And last but, definitely, not least is our cruise that evening from 6 to 9 p.m. Open to 1979 and older cars only they will cruise the main drag through town where the hot rod scene in Emmett all started.

### Harvest Festival

The Annual Harvest Festival Street fair is held the last weekend in September. This is a FREE event to attend full of wonderful food vendors, arts and craft vendors, and entertainment! Local orchards are available for picking too! This event includes over 50 arts and crafts, dancing, drawings, good food, music, kids activities including pumpkin decorating, sidewalk sales, a hay ride, farmers market and much

### more. River Through Time

The River Through Time is a free annual event sponsored by the Gem County Historical Society to celebrate the people who settled the Payette River between 1859 and 1946. Historical characters are portrayed by re-enactors from the area and many from right here in Gem County. There are mountain men, overland trail emigrants, sheep herders, cowboys, miners and Civil War soldiers demonstrating their part in history. This is a great place to get up close and interact with living history. The Civil War soldiers re-enact skirmishes between the Union and the Confederacy and hourly fire two Napoleon cannons. Learn to send flag signals to army troops, talk to pioneers in their encampment, or try your hand at a miner's sluice box. Dress in costume if you have one, pack a picnic and bring the whole family out for an enjoyable day at River Through Time.







### Wings and Wheels

Wings and Wheels April will be the 13th year of the Wings and Wheels at the Emmett City Airport. Sawyer Field will be packed with about 150 classic cars, and other vehicles and 50 vintage planes. The event runs from 8 a.m. to 2 p.m. with breakfast served by the Idaho Aviation Association of the Treasure Valley. Aviation and auto enthusiasts love this event which includes radio controlled helicopters and model aircraft with wing spans to six feet. Aviator competitions include spot-landing competition, flour bombing, short-field takeoff and usually skydivers.

### Youth Appreciation Day

Youth Appreciation is held in April and began in the early 1970s. This one day free event is held at the Gem Island Sports Complex. The 54 acre island becomes a playground for kids of all ages and their families featuring archery, license-free fishing, gold panning, face painting, rock climbing, bounce houses and much more. This event calls importance to the children in the community. A full day of fun is available and all is free except hot dogs and hamburgers from the Emmett Rotary Club which sell for \$1 each. Free snow cones and cotton candy are a big hit. Also during the month, the mayor will proclaim Youth Appreciation Day, a coloring contest will be held and the Rotary will hold their annual Youth Auction in which proceeds will be donated to local youth groups. This event is held by the Emmett Rotary Club, committed community volunteers, local organizations and businesses.





## ATTRACTIONS



**The Payette River** runs through the valley supplying precious water to the many acres of farmland and also provides water activities like tubing, fishing, and kayaking. The Payette River is just an hour's drive from Boise, but still leaves civilization far behind. Visitors float a clean mountain river with forested banks, hawks, or osprey flying overhead. Different groups enjoy different stretches of the river.

**Gem County Golf Course** is a regulation 9-hole golf course that has been challenging Idaho golfers with its meandering fairways, sand bunkers and water hazards since 1952. The course rewards good shots, meanwhile offering a fun place for golfers of all abilities. It is a 36 par at 2,910 yards with a course rating of 67.6 and a slope of 115. Great prices, small-town friendly service, cart rental, and clubhouse café make this a great after-work or weekend golfing destination. Call for hours and prices at 208-365-2675.

**Little Gem Cycle Park** has acres of hills and miles of trails for motorcycling and 4-wheeling. Providing abundant recreational opportunities.

**Gem Island Sports Complex** is a 57 acres island facility and includes a skateboard park, basketball courts, volleyball courts, eight baseball fields, and an amphitheater, paved walking paths, ADA accessible fire pit, and a stocked fishing pond.

**Black Canyon Reservoir** offers a plethora of summer water activities where you can take the family for picnics or a day at the "beach." There are docks and ramps for boating, fishing, and water skiing enthusiasts. Black Canyon Reservoir is located between Emmett and Horseshoe Bend along Hwy 52.

**Sage Hen Reservoir** features boat ramps and 47 developed campsites and enjoys the distinction of being one the best fishing lakes in Southwestern Idaho.





**Roystone Hot Springs** is a natural hot springs 10 miles north of Emmett. It was built in the early 1900s as a resort and health spa. The newly remodeled Roystone offers private or non-private pool and hot tub sessions plus water aerobics. It also includes an event center, party room and RV park. Call 208-584-3371 for reservations all year around or visit [RoystoneHotSprings.com](http://RoystoneHotSprings.com).

**Squaw Butte** dominates the valley, the lady watches over her people and lands. The mountain was so named by the American Indians that once lived in the valley because the profile of an Indian maiden can be seen. Boise National Forest offers year-round activities within 113 square miles of pristine public-access lands.







**Big Game Hunting** No other state in the lower 48 has much big game hunting variety and quality as Idaho. Our state is sparsely populated with huge areas of forests, canyon lands, and mountain wildernesses. Idaho's elk herds are renowned and an elk or big game hunt offers you the opportunity to experience real nature and wilderness, spend time with family or friends, and harvest a nice animal. Idaho's non-wilderness areas are accessed by back country roads, while wilderness areas are accessed by horseback or on foot. Idaho outfitters offer archery, rifle, and muzzleloader hunts. Customized services range from drop camps to fully guided trips.

**Deer and Elk Tags Hunters** who book through an Idaho outfitter will find their deer and elk tags easy to get. Each year the Fish and Game Commission sets aside and/or allocates a number of elk and deer tags for non-resident hunters who book with licensed outfitters. This system means that Idaho outfitters have tags long after surrounding states, such as Montana and Wyoming, have sold out.

**Bird Hunting & Fishing Idaho** river outfitters will often combine chukar hunting with steelhead and sturgeon fishing on "cast and blast" trips. Forest Grouse hunting can be an option while hunting big game. There's also fishing at Sawyer's Pond, Ed's Pond at the Gem Island Sports Complex along the Payette River.





## EMMETT BUSINESSES IN 1893

**Henry Riggs Jr.**, is the popular proprietor of the only other saloon in Emmett, and a right pleasant resort he keeps, too. Henry is one of the rustlers and always stands in for every new enterprise or proposition in the leastwise beneficial to the community. His courteous demeanor makes friends of all who come his way.

**Tommy Wilkerson** is Emmett's only barber and the butt of all good natured fun. He has one of the neatest shops in the country and does good work. He has been thinking some of disposing of his property here and going east but we believe is on the eve of abandoning the idea altogether, and his numerous friends hope he will.

**P. Abney** is a house and sign painter whose work can not be excelled anywhere in the west. He is a professional landscape and fresco painter but has very little to do in that line. He learned his trade in the Pullman car shops at Elmira, New York. His sign painting for the Index was most satisfactory.

**Theodore Womack** and son run the blacksmith shop opposite the lumber yard and the old gentleman has been pounding iron right in that one spot for twenty two years. They appear to enjoy a good trade.

**Hardy Phillips and Jacob Hamm** run the other blacksmith shop and are thorough workman. Hardy has only been here eight or nine years but Jake has been blacksmithing at Caldwell, Boise and Emmett for the past twenty years. Both of them are among the most substantial citizens of Emmett.

**D. W. C. Brown** is Emmett's warm hearted and obliging undertaker and is all together too sympathetic to make much of a success of the undertaking business. Mr. Brown has been right in Emmett for about twenty years. He is a practical and experienced wood workman and has worked on nearly every house in Emmett. His plain cabinet work is of an excellent character and speaks for itself. His stock of caskets is complete and ranges in quality from \$10 to \$100, any kind of produce taken in exchange for goods.

**Wm. Fowler** is the local photographer and the excellent character of his work speaks for itself. He is also teacher of the Emmett coronet band and as such has given universal satisfaction. He has been in the west the past thirteen years and in Emmett for half as many months. He is a gentleman whom it is a real pleasure to meet.

**Steve Dempsey** is the precise yet congenial postmaster at this place and also proprietor of the only drugstore in town. He received his appointment as postmaster the first of last July and is filling the position in a capable and satisfactory manner, with his amiable and courteous wife as an able assistant. Mr. Dempsey was twice elected to the Territorial legislature and was a member of the Senate in our first state legislature, from Boise county, where he resided continuously for thirty-two years and up until he located in Emmett about one year ago. His stock of drugs and medicine is much larger than might be expected in a small place like this. Mr. Dempsey' public life has been fraught with honor and uprightness without so much as even a rumor of crookedness.



**Dr. Eugene Clymer** is a competent and trustworthy physician and no better can be found in the state. He enjoys an extensive practice and is held in high esteem by all who know him.

**J. S. Smith and A. Meachen** are two excellent attorneys who get their mail at the Emmett post office. Two more congenial and pleasant gentlemen can not be found in a year's travel. While they are of the same profession they are not partners. Mr. Meachen has only recently arrived from Oregon. He is a graduate of Laval University and has practiced law in a number of western states. Mr. Smith practiced law in Illinois for 10 years and in Oregon and Idaho for the past six. His ability as a lawyer is first-class and he is an honorable, upright gentleman.

**Mrs. John Carter** is proprietor of the only millinery store in town and a better lady cannot be found.

*\* The above descriptions are "as was written" in the 1893 Index newspaper.*



# ANNUAL EVENTS

## JANUARY

- New Years Day Annual Collectible Auction
- Freezeout Challenge: Gem County Fairgrounds
- Sadie Hawkins Dance: Emmett High

## FEBRUARY

- Diabetes 101: Southwest District Health
- Hunters education
- Gem County Historical Museum Ladie's Social

## MARCH

- Boat Safety Class: Gem County Emergency Services Building
- Dr. Seuss Birthday Party: Emmett Public Library
- Gem Community Business Expo: Butte View Complex
- Junior Miss Cherry Festival Pageant Registration: Emmett Junior High
- Mr. Marvelous: Emmett High
- Sweet/Montour Annual Flea Market: Sweet Syringa Hall

## APRIL

- National Walking Day Emmett City Park
- Cowboy Ball: Gem County Fairgrounds
- Community Easter Egg Hunt: Emmett City Park
- Motorcycle Dirt Drags and Barrel Races: Gem County Fairgrounds
- Youth Appreciation Day: Gem Island Sports Complex
- Wings and Wheels: Emmett Airport
- Rose Bowl Soup Bowl Fundraiser

## MAY

- Annual Rotary Youth Benefit Dinner and Auction
- Black Canyon High graduation
- Cherry Festival Kickoff
- Emmett High Graduation
- Truck pull: Gem County Fairgrounds
- Women's Choir Spring Benefit Concert: Emmett High
- Love at First Walk
- Gem County Chamber of Commerce Golf Tournament

## JUNE

- Cherry Festival: Emmett City Park
- Cherry Festival Children's Parade: Downtown Emmett Cherry Festival Demolition Derby
- Cherry Festival Emmett Kiwanis Breakfast: Gem County Senior Center
- Cherry Festival Spit Pit and Pie Eating Contest
- Cherry Festival Train Show: Gem County Recreation District
- Emmett Community Arts Commission Show and Competition
- Emmett Farmers Market
- Emmett Lions Club Show and Shine: Emmett City Park
- Emmett Public Library yard sale
- Fireman Hose Competition: Downtown Emmett
- Miss Gem County and Gem County Outstanding Teen contest: Emmett Middle School
- Truck pull: Gem County Fairgrounds
- Valley of Plenty Quilters Quilt Show: Emmett Middle School



## JULY

- Cruise Night: Downtown Emmett
- Emmett Show and Shine: Emmett City Park
- Kids Sloppy Sprint Mud: Gem Island Sports Complex
- Independence Day fireworks show: Gem Island Sports Complex
- Rodeo Royalty Ice Cream Social

## AUGUST

- Buckaroo Breakfast: Emmett City Park
- Gem/Boise County Fair and Rodeo: Gem County Fair grounds
- Truck and Tractor pull: Gem County Fairgrounds
- Tea Party Fundraiser for Fuzzy Paws/Emmett Cat Division

## SEPTEMBER

- 9/11 Remembrance Ceremony
- Emmett High School Homecoming
- Fit and Fall Proof Class: Gem County Recreation District
- Huskie Blue Bash: Emmett Middle School
- Annual Glow Run Gem Island Sports Complex
- Crab Feed
- Harvest Festival Street Fair
- Hay Ride & Pumpkin Painting

## OCTOBER

- A River Through Time Civil War Encampment and Reenactment: Gem Island Sports Complex
- Emmett High haunted house
- Emmett Multi-Church Choir rehearsals
- Gem County / Emmett Emergency Services Halloween Trunk-or-Treat
- Harvest Festival and Street Fair
- Hay ride and pumpkin painting
- Squaw Butte Chapter of Idaho Back County Horsemen fundraiser Yard Sale
- Valor Health Auxiliary Fall Fling Luncheon

## NOVEMBER

- Stuff the Ambulance

# IN GEM COUNTY

- Cupcake Wars / Basket Auction: Emmett Public Library Fundraiser
- Emmett High School Fall Concert
- Holiday Magic on Main Street Parade
- Community Tree Lighting
- Santa's One Stop Shop: Gem County Recreation District
- Veteran's Day Program Emmett High School  
\* \$2 bills Shop Local
- Fill the Truck

## DECEMBER

- Christmas Cheer Baskets
- Christmas Eve Community Candlelight Service
- Christmas in New York: Emmett High
- Emmett Multi-Church Choir
- Emmett Women's Choir Benefit Christmas Concert
- Holiday dinner VFW 4900
- Santa's Workshop: Gem County Recovery Center
- Annual Cherry Rise Downtown Emmett



## REGULAR OR MONTHLY ACTIVITIES

- Bunco
- Chamber of Commerce Mid Day Mingle
- Clogging dance classes
- Emmett Valley Friendship Coalition: Weekly Dinner and Pantry
- Entertainment at Cherry Ridge Rehab
- Emmett Women's Choir
- Family History Center of the LDS Church
- First Wednesday
- Freezeout Bowmen shoot
- Little League
- Parent — Teacher Conference at area schools
- Gem County Recreation District
- Tumbling Class
- Summertime Youth Lunch at the Park: Emmett City Park

## REGULAR MEETINGS

- Al-Anon
- Alcoholics Anonymous
- Alzheimer's Support
- American Legion Post 49 and Ladies Auxiliary
- Black Canyon Bowmen
- Boy Scouts
- Celebrate Recovery and The Landing
- Clogging Dance Classes
- Dementia Support Group
- Electa Chapter 22 O.E.S.
- Emmett Area Crime Prevention Council
- Emmett Amateur Radio Society
- Emmett Art Group • Emmett Book Club
- Emmett Farmers Market
- Emmett Kiwanis Club
- Emmett Lions Club
- Emmett Rotary Club
- Emmett Roughriders ATV Club
- Emmett Women's Choir
- Family Support Group
- Friends of the Emmett Library
- Gardening Gems
- Gem County Chamber of Commerce Mid-Day Mingle
- Gem County Christian Home Schoolers
- Gem County Democrats
- Gem County Health Connections
- Gem County Historical Society
- Gem County Narcotics Anonymous
- Gem County Republican Central Committee
- Gem County Rock and Mineral Society
- Gem County Sheriff's Posse
- Gem Lions Club
- Grief and Loss Support Group
- Interact/Junior Chamber of Commerce
- Pet Adoption League
- Shooting Star: Beginning cheer leading
- Silverleaf Square Dance Club
- Squaw Butte Ramblers RV Club
- Squaw Butte Back Country Horsemen
- Squaw Butte Retired Educators Association
- Squaw Creek Soil Conservation
- Sweet-Montour Syringa Club
- TOPS (Take Off Pounds Sensibly)
- Valor Health Auxiliary
- Veterans of Foreign Wars
- Veteran's services
- We All Matter
- Write your own life story





# AMAZING *Idaho* Real Estate



*Amazing Homes...  
Amazing Clients...  
Amazing Agents...*

*Here to Meet All of Your  
Real Estate Needs!  
208-365-9500*

**CONNIE DOWNS**

Broker/Owner .....208-880-0828

**THOMAS HELZER**

Associate Broker/Owner ....208-573-1481

**VICKY CHURCHFIELD**

Realtor/Owner.....208-830-2050

**SANDI SWANSON**

Associate Broker/Realtor ...208-869-7460

**TONI HOLMBERG**

Realtor.....208-740-0110

**STEVE NEBEKER**

.....208-365-6224

**LUCINDA MCCLAIN**

Associate Broker/Realtor ..208-371-5717

**TONI JUDY**

Realtor.....208-477-4266

**LACEY MCKINNEY**

Realtor.....208-369-6455

**SUSIE JEWELL**

Realtor.....208-860-0140

**CIARA WARNER**

Realtor.....208-949-7298

**JIM BAKER**

.....208-407-1602

MULTIPLE LISTING SERVICE

**MLS**



**510 S Washington Ave, Emmett**  
**AmazingIdahoRealEstate.com**

1499356



## ACCOUNTANT

**Gibbs & Company, CPA's**  
709 S. Washington Ave. Ste. A  
Emmett, ID 83617  
(208) 365-7117

**Perin, Reisse CPA**  
7721 W. Settlers Ave.  
Boise, ID 83704  
(208) 322-0188  
<http://www.ripcca.com>

**Schaal, Penny L. CPA**  
316 E. Main St.  
Emmett, ID 83617  
(208) 365-2817

## AGENCIES

**Gem County Recovery Community Center**  
115 S. McKinley  
Emmett, ID 83617  
(208) 398-5151  
<http://emmettrecovery.com>

**Idaho Army National Guard**  
2175 S. Johns Ave.  
Emmett, ID 83617  
(208) 272-7077  
<http://state.nationalguard.com/idaho>

## AGRICULTURE

**7 Oaks Orchards, LLC**  
2563 W. South Slope Rd.  
Emmett, ID 83617  
(208) 940-7104  
<http://7oaksllc.com>

**B & W Fuels, Inc.**  
1900 N. Washington Ave.  
Emmett, ID 83617  
(208) 365-2291  
<https://bwfuelsinc.business.site/>

**Candy Apple Orchard**  
1871 W. South Slope Rd.  
Emmett, ID 83617  
(208) 365-1413  
<http://www.candyappleorchard.com>

**Emmett Floral Co**  
132 & 134 W. Main St.  
Emmett, ID 83617  
(208) 369-7886  
<http://www.emmettfloralco.com>

**Flowerland Floral**  
201 W. Main St. Ste. B  
Emmett, ID 83617  
(208) 365-2222

**KL Farms**

3620 Bishop Rd  
Emmett, ID 83617  
(208) 243-2963

**Payette River Natural Beef**  
6110 W. Black Canyon Hwy  
Emmett, ID 83617  
(208) 570-4408

**Tyler's Rocky Point Orchard**  
145 E. South Slope  
Emmett, ID 83617  
365-6160

**Williams Fruit Ranch**  
2455 W. South Slope Rd.  
Emmett, ID 83617  
(208) 365-7757

## AIR CONDITIONING

**Rocky Mountain True Value**  
132 S. Washington Ave.  
Emmett, ID 83617  
TV (208) 365-3135 RMM 365-7473  
<https://www.truevalue.com/rockymtn/Home.aspx>

## ANIMAL SERVICES

**Animal Medical Center of Emmett**  
2588 Waterwheel Rd.  
Emmett, ID 83617  
(208) 365-5396  
<https://animalmedicalcenteremmett.com/>

**Gem Veterinary Clinic**  
703 S. Washington Ave.  
Emmett, ID 83617  
(208) 365-6008  
<http://www.GemVet.com>

**Pet Adoption League of Gem County, Inc.**  
1526 N. Washington Ave.  
Emmett, ID 83617  
(208) 365-1359  
<http://www.petadoptionleague.net>

**Pet Palace**  
1615 Star Lane  
Emmett, ID 83617  
(208) 365-2363

**Veteran K-9 Training**  
veterank9training@gmail.com  
Emmett, ID 83617  
(208) 810-9808

## ANTIQUES

**Emmett Floral Co.**  
124 W. Main St.  
Emmett, ID 83617  
(208) 369-7886

**Hen House Home & Gift**  
137 W. Main St.  
Emmett, ID 83617  
(208) 398-8300

## APPLIANCE SERVICES

**The Home Store**  
824 S. Washington Ave  
Emmett, ID 83617  
(208) 365-5700  
<http://www.thehomestoreonline.com>

## ARTS

**Beattie Photography**  
3619 Beacon Ave  
Emmett, ID 83617  
(208) 867-0317  
<http://www.beattiephotography.smug-mug.com>

**Emmett Community Arts Commission**  
No Physical Address  
Emmett, ID 83617  
<https://www.facebook.com/EmmettCommunityArtsCommission/>

**Emmett Community Playhouse**  
PO Box 883  
Emmett, ID 83617  
<http://www.emmettcommunityplayhouse.org>

## ASPHALT

**Gem Asphalt LLC**  
4777 Cascade Rd  
Emmett, ID 83617  
(208) 559-5241

**Inline Asphalt Inc**  
9300 N. Hwy 52  
Sweet, ID 83670  
(208) 369-0583  
<http://www.inlineasphalt.com>

## ASSISTED LIVING

**Heart 'n Home Hospice & Palliative Care**  
306 S. Washington Ave.  
Emmett, ID 83617  
(208) 365-2099  
<http://www.gohospice.com>

**Home Helpers Home Care**  
106 W Main St. Ste H  
Middleton, ID 83644  
(208) 963-5655  
<http://www.homehelpershomecare.com/nampa>



**Horizon Home Health & Hospice**

312 E. Main St.  
Emmett, ID 83617  
(208) 365-1693  
<http://www.horizonhh.com>

**Meadow View Assisted Living**

1013 S. Johns Ave.  
Emmett, ID 83617  
(208) 365-1122  
<http://www.meadowviewal.com>

**River's Edge Rehabilitation**

714 N. Butte Ave.  
Emmett, ID 83617  
(208) 365-4425  
<http://www.riversedgerehab.com>

**Signature Home Health and Hospice**

3904 E. Flamingo  
Ste 100  
Nampa, ID 83687  
(208) 465-7121  
<http://www.4signatureservice.com/>

**The Cottages of Emmett**

411 E. 12th St.  
Emmett, ID 83617  
(208) 365-9490  
<http://www.thecottages.biz>

**ATTORNEYS****Capitol Law Group, PLLC**

109 N. Hayes Avenue  
Emmett, ID 83617  
(208) 365-4136  
<http://www.capitollawgroup.com>

**Fleming Law Offices, PLLC**

1312 S. Washington Ave. Suite F  
Emmett, ID 83617  
(208) 365-9400  
<http://www.fleminglawofidaho.com>

**High Rock Law**

127 E Main St  
Emmett, ID 83617  
(208) 369-4149

**Issachar Law / Immigration lawyer**

119 W Main St. #1  
Emmett, ID 83617  
(208) 398-4969  
<http://www.issachrlaw.com>

**Linville, Richard**

P.O. Box 671  
Emmett, ID 83617  
(208) 365-2106

**AUTO SALES****Hanigan Auto Sales**

1550 S. Washington Ave  
Emmett, ID 83617  
(208) 365-5050  
<http://www.haniganautosales.com>

**AUTOMOTIVE REPAIR****Commercial Tire**

309 N. Washington Ave.  
Emmett, ID 83617  
(208) 365-5066

<http://www.commercialtire.com>

**Emmett Automotive Repair**

101 E. Enterprise Dr.  
Emmett, ID 83617  
(208) 365-2933

**Kim's Paint Center**

110 N. Wardwell  
Emmett, ID 83617  
(208) 365-5211

**Les Schwab Tire Center**

419 N. Washington Ave.  
Emmett, ID 83617  
(208) 365-3548  
<https://www.lesschwab.com/store/id/emmett/104>

**Master Lock and Key, LLC**

Ryan Karrer  
Emmett, ID 83617  
(208) 365-5625  
<http://masterlockandkey.com>

**BAIL BOND****Kenny Keene's Bail Bonds**

3146 Laurel Way  
Emmett, ID 83617  
(208) 398-8877

**BAKERY****Blue Ribbon Bakery**

515 S. Washington Ave.  
Emmett, ID 83617  
(208) 365-3290  
<http://www.facebook.com/home.php#!/pages/Blue-Ribbon-Cafe-Bakery/161337514950>

**BANKS****Clarity Credit Union**

415 S. Washington Ave.  
Emmett, ID 83617  
(208) 467-6583  
<http://www.claritycu.com>

**First Interstate Bank**

250 S. Washington Ave.  
Emmett, ID 83617  
(208) 468-4675  
<https://www.fib.com/>

**KeyBank**

1024 S. Washington Ave.  
Emmett, ID 83617  
(208) 365-5026  
<http://www.keybank.com>

**US Bank**

200 S. Washington  
Emmett, ID 83617  
(208) 365-4452  
<http://www.usbank.com>

**US Bank — In Albertsons**

640 HWY 16  
Emmett, ID 83617  
(208) 365-7095  
<http://www.usbank.com>

**Wells Fargo Bank**

102 W. Main St.  
Emmett, ID 83617  
(208) 365-4422  
<http://www.wellsfargo.com>

**BAR/LOUNGE****Gem Lounge**

209 W. Main St  
Emmett, ID 83617  
(208) 365-2934

**Huck-n-Finns**

108 E. Main St.  
Emmett, ID 83617  
(208) 365-3048  
<http://www.hucknfinns.com>

**BEAUTY SALON****Epic Day Spa**

133 E. Main St.  
Emmett, ID 83617  
(208) 365-NAIL (6245)  
<http://www.epicdayspa.net/>

**Rocking S Salon**

108 N. Washington Ave  
Emmett, ID 83617  
(208) 961-0214

**BOARDING SCHOOL****Cherry Gulch/Novitas Academy**

3770 E. Black Canyon Hwy  
Emmett, ID 83617  
(208) 365-3437  
<http://www.cherrygulch.org>

**BOWLING****KT's Lanes**

1501 S. Washington Ave.  
Emmett, ID 83617  
(208) 365-1227  
<http://www.ktslanes.com>

**BUILDING****Affordable Plumbing Inc.**

889 Sunset Dr.  
Emmett, ID 83617  
(208) 365-6737  
<http://affordableplumbinginc.yolasite.com/>

**Foundation Supportworks of Idaho**  
132 E. State St.  
Eagle, ID 83616  
(208) 908-1014  
<http://www.foundationrepairidaho.com>

## BUILDING SUPPLIES

**Gem Supply & Building Co-op, Inc**  
402 N. Washington Ave.  
Emmett, ID 83617  
(208) 365-4444

**Idaho Materials and Construction**  
1333 W. Salesyard Rd.  
Emmett, ID 83617  
(208) 365-7121

**Mountain West Building Supply**  
2449 HWY 52  
Emmett, ID 83617  
(208) 365-7580

## BUSINESS

**D&S Specialties, Inc.**  
132 E. Main St  
Emmett, ID 83617  
(208) 365-5684  
<http://www.dands.biz>

**Master Lock and Key, LLC**  
Ryan Karrer  
Emmett, ID 83617  
(208) 365-5625  
<http://masterlockandkey.com>

## BUSINESS SERVICES

**Beattie Photography**  
3619 Beacon Ave  
Emmett, ID 83617  
(208) 867-0317  
<http://www.beattiephotography.smugmug.com>

**Better Business Bureau**  
125 E. 50th St.  
Boise, ID 83711  
(208) 947-2115  
<http://bbb.org>

**Cherry Creek Events**  
680 E. Central Rd  
Emmett, ID 83617  
(208) 369-0640  
<http://www.cherrycreekevents.com>

**Emmett Connections Directory**  
P.O. Box 311,  
(208) 278-5099  
<http://www.emmettconnections.com>

**Gem County Gazette**  
800 E. Locust  
Emmett, ID 83617  
(208) 365-1005

**Idaho Web Printers**  
800 E. Locust  
Emmett, ID 83617  
(208) 365-1005

**Master Lock and Key, LLC**  
Ryan Karrer  
Emmett, ID 83617  
(208) 365-5625  
<http://masterlockandkey.com>

**Messenger Index**  
120 N. Washington Ave.  
Emmett, ID 83617  
(208) 365-6066  
<http://www.messenger-index.com>

**Squaw Butte Signs**  
615 S. Washington Ave.  
Emmett, ID 83617  
(208) 365-2285  
<http://www.squawbuttesigns.com>

**Western Alliance for Economic Development**  
20523 Whittier Dr.  
Greenleaf, ID 83626  
(208) 615-6083  
<http://www.westernallianceed.org>

**Your Name On This**  
1105 S. Washington Avenue  
Emmett, ID 83617  
(208) 631-5830  
<http://www.ynotadvertising.net>

## CARPET CLEANING

**M&M Carpet Cleaning**  
1877 Fenton Dr.  
Emmett, ID 83617  
(208) 398-8770  
<http://www.mmc carpet.net>

**Multi Clean, Inc.**  
3154 Shellrock St.  
Emmett, ID 83617  
(208) 365-4316  
<https://idahomulticlean.com>

## CATERING

**Cold Mountain Creek Restaurant**  
1825 Hwy 16  
Emmett, ID 83617  
(208) 365-1570  
<https://www.facebook.com/coldmountaincreek>

**Huck-n-Finns**  
108 E. Main St.  
Emmett, ID 83617  
(208) 365-3048  
<http://www.hucknfinns.com>

**Seven Springs Ranch**  
3800 E. Black Canyon Hwy  
Emmett, ID 83617  
(208) 817-0224  
<http://sevenspringsranch.org>

## CHIMNEY SWEEP

**A Fireman's Chimney Sweep**  
3629 Gem Ave  
Emmett, ID 83617  
(208) 890-4588  
<http://www.firemanchimney.com>

## CHIROPRACTOR

**Schreck Chiropractic and Wellness**  
701 S. Washington Ave.  
Emmett, ID 83617  
(208) 365-1392  
<http://www.schreckchiro.com>

## CHURCHES

**Community Bible Church**  
120 E. 3rd St.  
Emmett, ID 83617  
(208) 365-3712  
<http://www.emmettcbc.org>

**Emmett Nazarene Church**  
1144 N. Washington Ave.  
Emmett, ID 83617  
(208) 365-2215  
<http://www.emmettnaz.org/>  
Emmett United Methodist Church

**1500 E. Locust**  
Emmett, ID 83617  
(208) 365-3242  
<http://www.emmettumc.org/>

**Sacred Heart Catholic Church**  
211 E. 1st St.  
Emmett, ID 83617  
(208) 365-4320

**St. Mary's Episcopal Church**  
219 E. 1st Street  
Emmett, ID 83617  
(208) 365-2309  
<http://www.stmarys.episcopalidaho.org>

**The Orchard Christian Church**  
1469 W. 12th St  
Emmett, ID 83617  
(208) 505-7947

## CLINIC

**River's Edge Rehabilitation**  
714 N. Butte Ave.  
Emmett, ID 83617  
(208) 365-4425  
<http://www.riversedgerehab.com>

**Valley Family Health Care**  
207 E. 12th St.  
Emmett, ID 83617  
(208) 365-1065  
<http://www.vfhc.org>

## CLOTHING STORE

**New Leaf Thrift Store**  
116 E Main St  
Emmett, ID 83617  
(208) 369-4215  
<http://www.newleafministriesthrift.org>

**Young's Store**  
1508 Elm Place  
Meridian, ID 83642  
(208) 869-2313



# Emmett Automotive Repair & Exhaust

Foreign • Domestic • Equipment • Trucks



Visit Us At  
[emmettauto.com](http://emmettauto.com)



**Hitches & Accessories**  
Specializing in All Hitches including  
5th Wheel & Gooseneck Hitches

We are your  
EMMETT AREA



Call 208-365-6937

*"We take pride  
in our work!"*

- Comprehensive Computer Diagnostics
- Electrical Troubleshooting
- Runability
- Air Conditioning
- Tune-up
- Fuel Injection
- Asian Imports
- Coolant System
- Transmission Flush
- Complete exhaust Repairs.

**101 Enterprise 208-365-2933**

1692543



*Emmett, Idaho*

**Pastor Jonathon Phillips**

The mission of Community Bible Church is uniting people to Christ through worshiping God, sharing the gospel with others, growing in grace, encouraging each other, and serving people in need.

---

## **Service Times**

### **Sunday:**

8:30 am	Worship Service I	10:15 am	Sunday School	11:15 am	Kids' Church
9:45 am	Coffee & Friends	11:15 am	Worship Service II	6:00 pm	Evening Worship

### **Tuesday:**

6:30 pm Life4ce Teens

---

### **Wednesday:**


7:00 pm Bible Study  
7:00 pm Kingdom Kids (ages 5-12)

---

### **Thursday:**

6:00 pm Celebrate Recovery

---

**120 E Third St.**  
**208-365-3712 • emmettcbc.org**  
**EmmettCBC at Facebook** 





**COAL SALES**

**Salskov Transfer, Inc.**  
412 W. 1st St.  
Emmett, ID 83617  
(208) 365-3191

**COFFEE SHOP**

**HeBrews Coffee**  
118 W. Main St.  
Emmett, ID 83617  
(208) 365-7756

**COMMERCIAL**

**Evans Realty — John & Teena Turner**  
1302 S. Washington Ave.  
Emmett, ID 83617  
(208) 365-4495  
<http://www.EvansRealtyLLC.com>

**Evans Realty - John Evans**  
1302 S. Washington Ave.  
Emmett, ID 83617  
(208) 365-4495  
<http://www.johnevans.cc>

**Evans Realty LLC**  
1302 S. Washington Ave.  
Emmett, ID 83617  
(208) 365-4495  
<http://www.EvansRealtyLLC.com>

**Group One | Sotheby's International Realty - Bowman Group**  
225 E. South Slope  
Emmett, ID 83617  
(208) 365-0210 (Patti)  
<http://www.PattiBowman.com>

**COMMERCIAL AND INDUSTRIAL STORAGE AND BUILDINGS**

**Downtown Storage**  
301 W. Main St. Ste. B  
Emmett, ID 83617  
(208) 398-8580

**Salskov Transfer, Inc.**  
412 W. 1st St.  
Emmett, ID 83617  
(208) 365-3191

**COMMUNITY CENTER**

**Gem County Senior Citizens, Inc.**  
719 S. Johns Ave  
Emmett, ID 83617  
(208) 365-4343

**COMPUTER NETWORKING**

**7th Dimension LLC**  
116 N. Commercial Ave.  
Emmett, ID 83617  
(208) 477-1222  
<http://www.7thdi.com>

**COMPUTER REPAIR**

**7th Dimension LLC**  
116 N. Commercial Ave.  
Emmett, ID 83617  
(208) 477-1222  
<http://www.7thdi.com>

**Computaters**  
117 E. Main St.  
Emmett, ID 83617  
(208) 365-3632  
<http://www.computaters.com>

**CONCESSIONS**

**Brown Bag Concessions, Inc**  
PO Box 1334  
Meridian, Idaho 83680  
(208) 941-7033

**Lazy D Enterprises**  
2361 Scenic Dr.  
Emmett, ID 83617  
(208) 371-2202

**CONCRETE SERVICES**

**Idaho Materials and Construction**  
1333 W. Salesyard Rd.  
Emmett, ID 83617  
(208) 365-7121

**Smalley Construction, LLC**  
1849 N. Substation Rd.  
Emmett, ID 83617  
(208) 365-3940  
<http://www.emmettconcrete.com/>

**CONSTRUCTION**

**Affordable Plumbing Inc.**  
889 Sunset Dr.  
Emmett, ID 83617  
(208) 365-6737  
<http://affordableplumbinginc.yolasite.com/>

**Avalanche Glass & Doors**  
402 N. Washington Ave  
Emmett, ID 83617  
(208) 365-5444

**Foundation Supportworks of Idaho**  
132 E. State St.  
Eagle, ID 83616  
(208) 908-1014  
<http://www.foundationrepairidaho.com>

**Gem Asphalt LLC**  
4777 Cascade Rd  
Emmett, ID 83617  
(208) 559-5241

**Goff's Plumbing**  
1235 Allen Ln.  
Emmett, ID 83617  
(208) 365-4257

**Gragg Home Improvement**  
1660 Thomas Ln.  
Emmett, ID 83617  
(208) 365-0108

**Idaho Materials and Construction**  
1333 W. Salesyard Rd.  
Emmett, ID 83617  
(208) 365-7121

**Inline Asphalt Inc**  
9300 N. Hwy 52  
Sweet, ID 83670  
(208) 369-0583  
<http://www.inlineasphalt.com>

**Mackey Electric**  
405 N. Washington Ave.  
Emmett, ID 83617  
(208) 365-4228  
<http://mackeyelectricidaho.com>

**Mountain West Building Supply**  
2449 HWY 52  
Emmett, ID 83617  
(208) 365-7580

**Salskov Transfer, Inc.**  
412 W. 1st St.  
Emmett, ID 83617  
(208) 365-3191

**Sawtooth Land Surveying, LLC**  
2030 S. Washington Ave.  
Emmett, ID 83617  
(208) 398-8104  
<http://www.sawtoothls.com>

**Smalley Construction, LLC**  
1849 N. Substation Rd.  
Emmett, ID 83617  
(208) 365-3940  
<http://www.emmettconcrete.com/>

**Treasure Valley Electric**  
3800 W. Central Rd.  
Emmett, ID 83617  
(208) 739-3460

**CONVENIENCE STORE**

**B & W Fuels, Inc.**  
1900 N. Washington Ave.  
Emmett, ID 83617  
(208) 365-2291  
<https://bwfuelsinc.business.site/>

**Main Street Beverage**  
212 W. Main St.  
Emmett, ID 83617  
(208) 365-3864

**COUNSELING**

**Cherry Gulch/Novitas Academy**  
3770 E. Black Canyon Hwy  
Emmett, ID 83617  
(208) 365-3437  
<http://www.cherrygulch.org>

**Community Partnerships of Idaho, Inc.**  
608 S. Washington Ave.  
Emmett, ID 83617  
(208) 365-5781  
<http://www.mycpid.com>

**Dean Doering & Associates**  
PO Box 58788  
Seattle, WA 98138  
(206) 324-3344  
<http://www.deandoering.com>

**Uncommon Counseling**  
2660 S. Substation Road  
Emmett, ID 83617  
(208) 631-1530  
<http://www.uncommoncounseling.com>

## DENTAL

**Elkins Dental**  
1110 S. Washington Ave.  
Emmett, ID 83617  
(208) 369-4532  
<http://www.elkinsdental.com>

**Emmett Dental & Orthodontics**  
314 S. Washington Ave.  
Emmett, ID 83617  
(208) 365-6313

**Peterson Orthodontics**  
1312 S. Washington Ave, Ste C  
Emmett, ID 83617  
(208) 365-6800  
<http://www.petersonorthodontics.com>

## DESIGN BUILD

**Iron Angel Metalworks LLC**  
2599 W. Success Way  
Ste. 2  
Emmett, ID 83617  
(208) 519-1793  
<http://www.ironangelmetalworks.com>

## DEVELOPMENTAL THERAPY

**Patriot Center / Summit Youth Academy**  
330 W. Main St.  
Emmett, ID 83617  
(208) 365-3642  
<http://www.youththerapy.com>

## DOG OBEDIENCE TRAINING

**Veteran K-9 Training**  
[veterank9training@gmail.com](mailto:veterank9training@gmail.com)  
Emmett, ID 83617  
(208) 810-9808

## DRIVERS EDUCATION

**Dusti Rose Driving School**  
2599 W Success Way, Ste 2  
Emmett, ID 83617  
(208) 398-0620  
<http://www.dustirosedrivingsschool.com>

## DUST CONTROL ON DIRT ROADS/ PARKING AREAS

**North American Dust Control**  
2211 Schiller Rd.  
Emmett, ID 83617  
(208) 365-2930  
<http://northamericandustcontrol.com>

## EDUCATION

**Abilities, LLC**  
1638 N. Washington Ave.  
Emmett, ID 83617  
(208) 365-3183

**Advanced Services LLC**  
1648 Washington Ave. Suite 100  
Emmett, ID 83617  
(208) 365-1531

**Cherry Gulch/Novitas Academy**  
3770 E. Black Canyon Hwy  
Emmett, ID 83617  
(208) 365-3437  
<http://www.cherrygulch.org>

**Christian Education Release Time (CERT)**  
619 W. 12th Street  
Emmett, ID 83617  
(208) 365-3969  
<https://www.facebook.com/pages/Christian-Education-Release-Time/159285507436247>

**Community Partnerships of Idaho, Inc.**  
608 S. Washington Ave.  
Emmett, ID 83617  
(208) 365-5781  
<http://www.mycpid.com>

**Dean Doering & Associates**  
PO Box 58788  
Seattle, WA 98138  
(206) 324-3344  
<http://www.deandoering.com>

**Dusti Rose Driving School**  
2599 W Success Way, Ste 2  
Emmett, ID 83617  
(208) 398-0620  
<http://www.dustirosedrivingsschool.com>

**Emmett Independent School District**  
#221  
400 S. Pine St. Suite 1  
Emmett, ID 83617  
(208) 365-6301  
<http://www.emmettschools.org>

**Forge International School**  
1223 W. Main St.  
Middleton, ID 83644  
(208) 614-0665  
<http://www.forgeintl.org/>

**Patriot Center / Summit Youth Academy**  
330 W. Main St.  
Emmett, ID 83617  
(208) 365-3642  
<http://www.youththerapy.com>

**Payette River Regional Technical Academy**  
721 W. 12th St.  
Emmett, ID 83617  
(208) 365-0985  
<http://www.pr2ta.com>

## ELECTRICAL CONTRACTORS

**Mackey Electric**  
405 N. Washington Ave.  
Emmett, ID 83617  
(208) 365-4228  
<http://mackeylelectricidaho.com>

**Treasure Valley Electric**  
3800 W. Central Rd.  
Emmett, ID 83617  
(208) 739-3460

## EMPLOYMENT SERVICES

**Idaho Department of Labor**  
288 Hwy 16 Ste. 107  
Emmett, ID 83617  
(208) 364-7780 x3044  
<http://www.labor.idaho.gov>

## ENTERTAINMENT

**Babby Farms**  
5900 El Paso Rd  
Caldwell, ID 83607  
(208) 455-4487  
<http://www.babbyfarms.net>

**Emmett Community Playhouse**  
PO Box 883  
Emmett, ID 83617  
<http://www.emmettcommunityplayhouse.org>

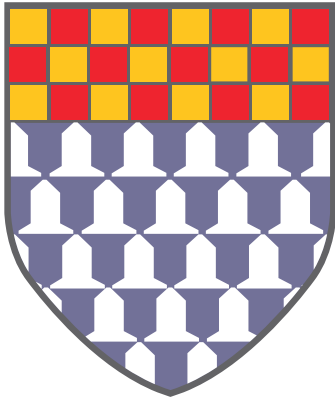
**Fourth Street Gardens**  
1723 E. 4th St.  
Emmett, ID 83617  
(208) 398-8273  
<http://www.FourthStreetGardens.com>

**Frontier Cinema**  
127 W. Main St.  
Emmett, ID 83617  
(208) 365-4393  
<http://www.frontiercinema.com>

**Gem County Golf Association**  
2102 W. Salesyard Rd.  
Emmett, ID 83617(208) 365-2675  
<http://www.emmettcitygolf.com>

**Gem County Historical Society Museum**  
501 E. 1st St.  
Emmett, ID 83617  
(208) 365-9530  
<http://www.gemcountymuseum.org>





# *Fleming*

## **LAW OFFICES**

*Timothy L. Fleming • Kent W. Day*

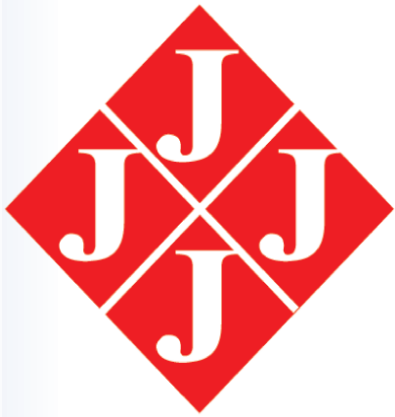
- **CRIMINAL  
DEFENSE**
- **FAMILY LAW &  
ESTATE PLANNING**
- **GENERAL  
PRACTICE**

Offering residents of Gem County and  
all of southern Idaho sound advice and  
quality legal representation.

# **208.365.9400**

**1312 S Washington, Ste E • Emmett, Idaho 83617**

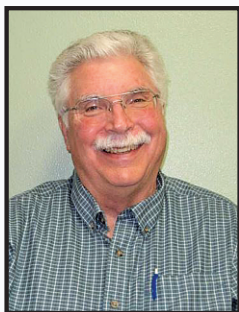
[www.fleminglawofidaho.com](http://www.fleminglawofidaho.com)  
[timfleminglaw@gmail.com](mailto:timfleminglaw@gmail.com)



# JENKINS INSURANCE SERVICES

*Comprehensive protection for your automobile or truck*

**HOME • AUTO • BUSINESS • FARM • HEALTH**



**Perry F. Jenkins**

807 S. Washington Ave.  
**208-365-4488**  
Emmett, ID



**PROGRESSIVE**

**Farmers  
Alliance**

1693745



# *Mackey Electric*

Residential • Commercial  
Industrial

**208-412-6796**

***Always Reliable. Always Dependable.***



Licensed • Insured • Bonded  
Electrical Contractor Lic.# C-31413-RCE 35201

See us at [mackeyelectricidaho.com](http://mackeyelectricidaho.com)

**24 HOUR EMERGENCY SERVICE**

1541640

# **YOUR NEIGHBORHOOD LUMBER YARD!**

## **FAMILY OWNED AND OPERATED!**

PLANNING ON GIVING YOUR HOME A  
FACE LIFT WITH A FRESH COAT OF PAINT?  
WE HAVE WHAT YOU NEED!



**Do it  
Best**



**WE HAVE WHAT YOU  
NEED FOR YOUR  
DO-IT YOURSELF,  
HOME IMPROVEMENT  
PROJECTS!**

**BIG OR SMALL, WE'VE  
GOT IT ALL**

**MOUNTAIN WEST**  
**BUILDING SUPPLY**

**BUILDING YOUR OWN  
STORAGE SHED?**

**BUILDING A NEW HOME?**

**REPAIRING AND  
STAINING YOUR DECK?**

**NEED NEW DOORS?**

**COUPON**

**FREE KEY!**

Buy one key get one of equal or  
lesser value FREE!

Key styles may vary.

Offer does not include transponder  
or electronic key blanks

Limited to stock on hand.

One Coupon per household.



**2449 W. Highway 52, Emmett, Idaho 83617 365-7580**  
**[www.mountainwest.doitbest.com](http://www.mountainwest.doitbest.com)**



**Gem County Senior Citizens, Inc.**  
719 S. Johns Ave  
Emmett, ID 83617  
(208) 365-4343

**Gem Lounge**  
209 W. Main St  
Emmett, ID 83617  
(208) 365-2934

**Holiday Motel & RV Park**  
1111 S. Washington Ave.  
Emmett, ID 83617  
(208) 365-4479  
<http://holidaymotelandriv.com/>

**Huck-n-Finns**  
108 E. Main St.  
Emmett, ID 83617  
(208) 365-3048  
<http://www.hucknfinns.com>

**KT's Lanes**  
1501 S. Washington Ave.  
Emmett, ID 83617  
(208) 365-1227  
<http://www.ktlanes.com>

**Roystone Hot Springs**  
7882 N. Hwy 52  
Sweet, ID 83670  
(208) 584-3371  
<http://www.roystonehotsprings.com>

## EQUIPMENT

**Gem Supply & Building Co-op, Inc**  
402 N. Washington Ave.  
Emmett, ID 83617  
(208) 365-4444

**Mountain West Building Supply**  
2449 HWY 52  
Emmett, ID 83617  
(208) 365-7580

**Salskov Transfer, Inc.**  
412 W. 1st St.  
Emmett, ID 83617  
(208) 365-3191

**Sawtooth Land Surveying, LLC**  
2030 S. Washington Ave.  
Emmett, ID 83617  
(208) 398-8104  
<http://www.sawtoothls.com>

## ESTHETICIAN

**Epic Day Spa**  
133 E. Main St.  
Emmett, ID 83617  
(208) 365-NAIL (6245)  
<http://www.epicdayspa.net/>

**Cherry Creek Events**  
680 E. Central Rd  
Emmett, ID 83617  
(208) 369-0640  
<http://www.cherrycreekevents.com>

**Fourth Street Gardens**  
1723 E. 4th St.  
Emmett, ID 83617  
(208) 398-8273  
<http://www.FourthStreetGardens.com>

**Gem County Fairgrounds**  
2199 S. Johns Ave.  
Emmett, ID 83617  
(208) 365-6828  
<http://www.gemcounty.org/fairgrounds>

**Gem County Recreation District**  
107 E. Main St.  
Emmett, ID 83617  
(208) 365-5748  
<http://www.gemcountyrecreation.com>

**Gem County Senior Citizens, Inc.**  
719 S. Johns Ave  
Emmett, ID 83617  
(208) 365-4343

**Idaho Army National Guard**  
2175 S. Johns Ave.  
Emmett, ID 83617  
(208) 272-7077  
<http://state.nationalguard.com/idaho>

**Pine Hollow Ranch**  
Geri Sharp  
2170 Waterwheel  
Emmett, ID 83617  
(208) 369-3827  
<http://pinehollowranch.com>

**Roystone Hot Springs**  
7882 N. Hwy 52  
Sweet, ID 83670  
(208) 584-3371  
<http://www.roystonehotsprings.com>

**Seven Springs Ranch**  
3800 E. Black Canyon Hwy  
Emmett, ID 83617  
(208) 817-0224  
<http://sevenspringsranch.org>

**Veteran's Memorial Hall**  
120 N. Hayes  
Emmett, ID 83617  
(208) 695-8916  
<http://www.americanlegionpost49.org>

**Willow Grove Events**  
4131 W. Central Rd  
Emmett, ID 83617  
(208) 577-8933

## EVENT PLANNER

**Cherry Creek Events**  
680 E. Central Rd  
Emmett, ID 83617  
(208) 369-0640  
<http://www.cherrycreekevents.com>

**Willow Grove Events**  
4131 W. Central Rd  
Emmett, ID 83617  
(208) 577-8933

## EVENT SUPPLIES

**Cherry Creek Events**  
680 E. Central Rd  
Emmett, ID 83617  
(208) 369-0640  
<http://www.cherrycreekevents.com>

**Gem County Recreation District**  
107 E. Main St.  
Emmett, ID 83617  
(208) 365-5748  
<http://www.gemcountyrecreation.com>

**I rentals**  
Emmett, ID 83617  
(208) 369-1381  
<http://isaacsonrentals.com>

## FACIALS

**Epic Day Spa**  
133 E. Main St.  
Emmett, ID 83617  
(208) 365-NAIL (6245)  
<http://www.epicdayspa.net/>

## FAMILY ENTERTAINMENT

**Emmett Community Playhouse**  
PO Box 883  
Emmett, ID 83617  
<http://www.emmettcommunityplayhouse.org>

**Frontier Cinema**  
127 W. Main St.  
Emmett, ID 83617  
(208) 365-4393  
<http://www.frontiercinema.com>

**Gem County Historical Society Museum**  
501 E. 1st St.  
Emmett, ID 83617  
(208) 365-9530  
<http://www.gemcountymuseum.org>

**KL Farms**  
3620 Bishop Rd  
Emmett, ID 83617  
(208) 243-2963

**KT's Lanes**  
1501 S. Washington Ave.  
Emmett, ID 83617  
(208) 365-1227  
<http://www.ktlanes.com>

**Roystone Hot Springs**  
7882 N. Hwy 52  
Sweet, ID 83670  
(208) 584-3371  
<http://www.roystonehotsprings.com>

110 N Wardwell  
Emmett, ID

# Kim's Paint Center & Collision Repair

Kim Hartnett

(208) 365-5211



1542933





# *Make yourself at home*

Everything we do—from our social activities to our amazing food—is designed to provide a warm and enriching experience. Come in and make yourself at home.

***Ask about our respite care options.***

- Independent Living
- Assisted Living • Memory Care

**Call today  
208-365-1122  
to schedule  
a tour!**



1013 So. Johns Ave., Emmett



**Phone** 208-365-1122  
**Web** meadowviewal.com



1544888

**FARM**

**Payette River Natural Beef**  
6110 W. Black Canyon Hwy  
Emmett, ID 83617  
(208) 570-4408

**Williams Fruit Ranch**  
2455 W. South Slope Rd.  
Emmett, ID 83617  
(208) 365-7757

**FARM & RANCH**

**Babby Farms**  
5900 El Paso Rd  
Caldwell, ID 83607  
(208) 455-4487  
<http://www.babbyfarms.net>

**D&B Supply**  
111 Hwy 16  
Emmett, ID 83617  
(208) 963-7040  
<http://www.mydbsupply.com>

**Evans Realty LLC**  
1302 S. Washington Ave.  
Emmett, ID 83617  
(208) 365-4495  
<http://www.EvansRealtyLLC.com>

**Gem Supply & Building Co-op, Inc**  
402 N. Washington Ave.  
Emmett, ID 83617  
(208) 365-4444

**Highland Livestock and Land, Inc.**  
PO Box 488  
Emmett, ID 83617  
(208) 365-4611  
<http://www.littlecattleco.com>

**Payette River Natural Beef**  
6110 W. Black Canyon Hwy  
Emmett, ID 83617  
(208) 570-4408

**Tractor Supply Company**  
1019 S. Washington Ave.  
Emmett, ID 83617  
(208) 365-2088  
<http://www.tractorsupply.com>

**Waterwheel Gardens**  
Frozen Dog Fruit Stand  
3700 Waterwheel Rd.  
Emmett, ID 83617  
(208) 365-1156

**FARMING**

**Candy Apple Orchard**  
1871 W. South Slope Rd.  
Emmett, ID 83617  
(208) 365-1413  
<http://www.candyappleorchard.com>

**Gem Supply & Building Co-op, Inc**  
402 N. Washington Ave.  
Emmett, ID 83617  
(208) 365-4444

**FINANCIAL SERVICES**

**A. Ralph Gurney Agency**  
1500 S. Washington Ave. Ste A  
Emmett, ID 83617  
(208) 365-4150  
<http://www.farmers.com>

**Adalant**  
2005 E. Quail Run Rd. Ste. 2  
Emmett, ID 83617  
(208) 724-2291  
<http://www.myadalant.com>  
**Buck Insurance Group, Inc.**  
602 S. Washington Ave.  
Emmett, ID 83617  
(208) 365-2160

**Clarity Credit Union**  
415 S. Washington Ave.  
Emmett, ID 83617  
(208) 467-6583  
<http://www.claritycu.com>

**Edward Jones**  
404 S. Washington Ave.  
Emmett, ID 83617  
(208) 365-3177  
<http://www.edwardjones.com>

**First Interstate Bank**  
250 S. Washington Ave.  
Emmett, ID 83617  
(208) 468-4675  
<https://www.fib.com/>

**Gibbs & Company, CPA's**  
709 S. Washington Ave. Ste. A  
Emmett, ID 83617  
(208) 365-7117

**H & R Block**  
288 Highway 16 Ste. 106  
Emmett, ID 83617  
(208) 888-6090  
<http://www.hrblock.com>

**Horizon Home Health & Hospice**  
312 E. Main St.  
Emmett, ID 83617  
(208) 365-1693  
<http://www.horizonhh.com>

**Jenkins Insurance Services**  
807 S. Washington Ave.  
Emmett, ID 83617  
(208) 365-4488

**Joski Insurance**  
65 N. Plummer Rd.  
Star, ID 83669  
(208) 995-2892  
<http://www.joskiinsurance.com>

**KeyBank**  
1024 S. Washington Ave.  
Emmett, ID 83617  
(208) 365-5026  
<http://www.keybank.com>

**Mike Taylor Insurance Agency, Inc.**  
820 S. Washington Ave

Emmett, ID 83617  
(208) 365-2472  
<http://www.MikeTaylorInsurance.com>

**New York Life**  
Donald Azevedo  
1009 W Myrtle, Suite 300  
Boise, ID 83702  
(208) 860-8988

**People's Financial Services, Inc.**  
119 E. Main St.  
Emmett, ID 83617  
(208) 365-4414  
**Perin, Reisse CPA**  
7721 W. Settlers Ave.  
Boise, ID 83704  
(208) 322-0188  
<http://www.ripcca.com>

**Pioneer Title Company**  
1500 S. Washington Ave. Ste A  
Emmett, ID 83617  
(208) 365-5343  
<http://www.pioneertitleco.com>

**Schaal, Penny L. CPA**  
316 E. Main St.  
Emmett, ID 83617  
(208) 365-2817

**The Insurance Group**  
444 Highway 16, Ste 102  
Emmett, ID 83617  
(208) 365-0115  
<http://www.treasurevalleyinsurance.com>

**US Bank**  
200 S. Washington  
Emmett, ID 83617  
(208) 365-4452  
<http://www.usbank.com>

**Wells Fargo Bank**  
102 W. Main St.  
Emmett, ID 83617  
(208) 365-4422  
<http://www.wellsfargo.com>

**World Finance and Tax Service**  
817 S. Washington Ave.  
Emmett, ID 83617  
(208) 365-1682  
<http://www.worldacceptance.com>

**FISHING**

**Character Lures, LLC**  
PO Box 1043  
Emmett, ID 83617  
(208) 398-6189  
<http://www.characterlures.com>

**FITNESS CENTER**

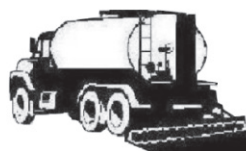
**Raw Iron Gym**  
121 S. Commercial Ave.  
Emmett, ID 83617  
(208) 447-9540  
<http://www.rawirongym.com>



**It Doesn't Have**

**To Be This Way!**

**NORTH  
AMERICAN**



**Dust**  
**CONTROL, LLC**

◆ Dust Control  
Products & Services

◆ De-Icing Products  
Liquid and Solid

◆ Asphalt  
Treatments

**208- 365-2930**

**Fax: 208- 365-1421**

**2211 Schiller Rd. • Emmett**



# **MSB**

## **MAIN STREET BEVERAGE EMMETT'S BEST BEVERAGE & TOBACCO VALUES**

**LARGEST SELECTION & LOWEST  
BEVERAGE PRICES IN GEM COUNTY**

**We Have It All! Ice Cold Beer • Kegs To Go  
Liquor • Mixers • Wines • State Liquor Store**

### **LIQUOR STORE**

**ALL YOUR TOBACCO NEEDS  
IN ONE PLACE**

**Name Brand Cartons at Great Values  
Pipes • Cigars • Lighters • Snuff  
Roll-Your-Own Cigarettes**

**COLD DRINKS, GROCERIES  
& MUNCHIES**

**Cold Pop • Waters & Juices • Bread & Milk  
Chips, Candy & More!**

### **SPORTING GOODS**

**Fishing Tackle • Live Bait • Rods & Reels**

212 W. Main St., Emmett, ID

**208-365-3864**

Open

Mon.-Sat. 7am - 8pm

Sunday 9am - 6pm





## FLORIST

**Emmett Floral Co**  
132 & 134 W. Main St.  
Emmett, ID 83617  
(208) 369-7886  
<http://www.emmettfloralco.com>

**Flowerland Floral**  
201 W. Main St. Ste. B  
Emmett, ID 83617  
(208) 365-2222

## FOOD

**Beijing Restaurant & RV Park**  
1203 S. Washington Ave.  
Emmett, ID 83617  
(208) 365-3400 Restaurant

**Blue Ribbon Bakery**  
515 S. Washington Ave.  
Emmett, ID 83617  
(208) 365-3290  
<http://www.facebook.com/home.php#!/pages/Blue-Ribbon-Cafe-Bakery/161337514950>

**Brown Bag Concessions, Inc**  
PO Box 1334  
Meridian, Idaho 83680  
(208) 941-7033

**Cold Mountain Creek Restaurant**  
1825 Hwy 16  
Emmett, ID 83617  
(208) 365-1570  
<https://www.facebook.com/coldmountaincreek>

**Gem Valley Arctic Circle**  
1205 S. Washington Ave  
Emmett, ID 83617  
(208) 365-1172  
<http://www.acburger.com>

**Idaho Pizza Company**  
1312 S. Washington Ave.  
Emmett, ID 83617  
(208) 365-3550  
<http://www.idahopizzacompany.com>

**La Costa Mexican Restaurant**  
517 N. Washington Ave.  
Emmett, ID 83617  
(208) 365-1567

**Lazy D Enterprises**  
2361 Scenic Dr.  
Emmett, ID 83617  
(208) 371-2202

**Papa Murphy's**  
Leslie McMillian  
412 E. Parkcenter Blvd  
Boise, ID 83706  
(208) 398-8811  
<http://www.papamurphys.com>

**Pizza Factory**  
102 W. 5th St.  
Emmett, ID 83617  
(208) 398-7777

## FOUNDATION REPAIR

**Foundation Supportworks of Idaho**  
132 E. State St.  
Eagle, ID 83616  
(208) 908-1014  
<http://www.foundationrepairidaho.com>

## GALLERIES

**Emmett Community Arts Commission**  
No Physical Address  
Emmett, ID 83617  
<https://www.facebook.com/EmmettCommunityArtsCommission/>

## GAS STATION

**B & W Fuels, Inc.**  
1900 N. Washington Ave.  
Emmett, ID 83617  
(208) 365-2291  
<https://bwfuelsinc.business.site/>

## GIFTS

**Bears Knight Out**  
1120 Royalty Ave.  
Emmett, ID 83617  
(208) 859-4526

## GLASS REPAIR

**Avalanche Glass & Doors**  
402 N. Washington Ave  
Emmett, ID 83617  
(208) 365-5444

## GOLF COURSE

**Gem County Golf Association**  
2102 W. Salesyard Rd.  
Emmett, ID 83617  
(208) 365-2675  
<http://www.emmettcitygolf.com>

## GOVERNMENT

**City of Emmett**  
501 E. Main St.  
Emmett, ID 83617  
(208) 365-6050  
<http://www.cityofemmett.org/>

**Gem County**  
415 E. Main St.  
Emmett, ID 83617  
(208) 365-4561  
<http://www.co.gem.id.us>

**Idaho Army National Guard**  
2175 S. Johns Ave.  
Emmett, ID 83617  
(208) 272-7077  
<http://state.nationalguard.com/idaho>

**Idaho Department of Labor**  
288 Hwy 16 Ste. 107  
Emmett, ID 83617  
(208) 364-7780 x3044  
<http://www.labor.idaho.gov>

## GROCERY

**Albertsons**  
640 HWY 16  
Emmett, ID 83617  
(208) 365-4420  
<http://www.albertsons.com>

## HAIR

**Epic Day Spa**  
133 E. Main St.  
Emmett, ID 83617  
(208) 365-NAIL (6245)  
<http://www.epicdayspa.net/>

## HARDWARE STORE

**Gem Supply & Building Co-op, Inc**  
402 N. Washington Ave.  
Emmett, ID 83617  
(208) 365-4444

**Mountain West Building Supply**  
2449 HWY 52  
Emmett, ID 83617  
(208) 365-7580

**Rocky Mountain True Value**  
132 S. Washington Ave.  
Emmett, ID 83617  
TV (208) 365-3135 RMM 365-7473  
<https://www3.truevalue.com/rockymtn/Home.aspx>

## HEALTH

**Elkins Dental**  
1110 S. Washington Ave.  
Emmett, ID 83617  
(208) 369-4532  
<http://www.elkinsdental.com>

**Gem Express Care**  
829B S. Washington Ave  
Emmett, ID 83617  
(208) 963-1190  
<http://gemexpresscare.buisness.site>

**Patriot Center / Summit Youth Academy**  
330 W. Main St.  
Emmett, ID 83617  
(208) 365-3642  
<http://www.youththerapy.com>



## River's Edge

Rehabilitation and Living Center



We gladly accept Medicaid and are ***now contracted with Select Health and United Health (includes AARP Complete!)***

5-star quality nursing care and rehabilitation right here in Emmett! River's Edge is equipped to provide the personalized care your family deserves.

If you have a loved one currently residing in a nursing home or long term care facility in another city, they can easily be transferred to Emmett to be closer to you. We will gladly take care of the leg work and ensure an easy transition. Come to River's Edge and let our family take care of your family!

Schedule a tour today!  
**208.365.4425**

714 North Butte Avenue,  
Emmett, ID 83617  
[www.riversedgerehab.com](http://www.riversedgerehab.com)

1841984



**Raw Iron Gym**

121 S. Commercial Ave.  
Emmett, ID 83617  
(208) 447-9540  
<http://www.rawirongym.com>

**The Body's Energy**

119 W. Main St.  
Emmett, ID 83617  
(208) 917-9888  
<http://www.thebodysenergy.com>

**HEALTH/FITNESS****Raw Iron Gym**

121 S. Commercial Ave.  
Emmett, ID 83617  
(208) 447-9540  
<http://www.rawirongym.com>

**HEALTHCARE****Abilities, LLC**

1638 N. Washington Ave.  
Emmett, ID 83617  
(208) 365-3183

**Community Partnerships of Idaho, Inc.**

608 S. Washington Ave.  
Emmett, ID 83617  
(208) 365-5781  
<http://www.mycpid.com>

**Elkins Dental**

1110 S. Washington Ave.  
Emmett, ID 83617  
(208) 369-4532  
<http://www.elkinsdental.com>

**Emmett Dental & Orthodontics**

314 S. Washington Ave.  
Emmett, ID 83617  
(208) 365-6313

**Emmett Eye Center**

1108 S. Washington Ave.  
Emmett, ID 83617  
(208) 365-2020  
<http://emmetteyecenter.com>

**Emmett Family Medicine & Direct Primary Care**

2001 E. Quail Run Rd.  
Emmett, ID 83617  
(208) 365-7131  
<http://www.emmettfamilymedicine.com>

**Gem Express Care**

829B S. Washington Ave  
Emmett, ID 83617  
(208) 963-1190  
<http://gemexpresscare.buisness.site>

**Heart 'n Home Hospice & Palliative Care**

306 S. Washington Ave.  
Emmett, ID 83617  
(208) 365-2099  
<http://www.gohospice.com>

**Meadow View Senior Living**

1013 S. Johns Ave.  
Emmett, ID 83617  
(208) 365-1122  
<http://www.meadowviewal.com>

**Peterson Orthodontics**

1312 S. Washington Ave, Ste C  
Emmett, ID 83617  
(208) 365-6800  
<http://www.petersonorthodontics.com>

**River's Edge Rehabilitation**

714 N. Butte Ave.  
Emmett, ID 83617  
(208) 365-4425  
<http://www.riversedgerehab.com>

**Schreck Chiropractic and Wellness**

701 S. Washington Ave.  
Emmett, ID 83617  
(208) 365-1392  
<http://www.schreckchiro.com>

**Signature Home Health and Hospice**

3904 E. Flamingo  
Ste 100  
Nampa, ID 83687  
(208) 465-7121  
<http://www.4signatureservice.com/>

**The Cottages of Emmett**

411 E. 12th St.  
Emmett, ID 83617  
(208) 365-9490  
<http://www.thecottages.biz>

**Valley Family Health Care**

207 E. 12th St.  
Emmett, ID 83617  
(208) 365-1065  
<http://www.vfhc.org>

**Valor Health**

1202 E. Locust  
Emmett, ID 83617  
(208) 365-3561  
<http://www.valorhealth.org/>

**HEATING****Rocky Mountain True Value**

132 S. Washington Ave.  
Emmett, ID 83617  
TV (208) 365-3135 RMM 365-7473  
<https://ww3.truevalue.com/rockymtn/Home.aspx>

**HOME FURNISHINGS/DECOR****Hen House Home & Gift**

137 W. Main St.  
Emmett, ID 83617  
(208) 398-8300

**HOME HEALTH CARE****Heart 'n Home Hospice & Palliative Care**

306 S. Washington Ave.  
Emmett, ID 83617  
(208) 365-2099  
<http://www.gohospice.com>

**Home Helpers Home Care**

106 W Main St. Ste H  
Middleton, ID 83644  
(208) 963-5655  
<http://www.homehelpershomecare.com/nampa>

**Horizon Home Health & Hospice**

312 E. Main St.  
Emmett, ID 83617  
(208) 365-1693  
<http://www.horizonhh.com>

**Meadow View Assisted Living**

1013 S. Johns Ave.  
Emmett, ID 83617  
(208) 365-1122  
<http://www.meadowviewal.com>

**Signature Home Health and Hospice**

3904 E. Flamingo  
Ste 100  
Nampa, ID 83687  
(208) 465-7121  
<http://www.4signatureservice.com/>

**The Cottages of Emmett**

411 E. 12th St.  
Emmett, ID 83617  
(208) 365-9490  
<http://www.thecottages.biz>

**HOME/GARDEN****Emmett Floral Co**

132 & 134 W. Main St.  
Emmett, ID 83617  
(208) 369-7886  
<http://www.emmettfloralco.com>

**Flowerland Floral**

201 W. Main St. Ste. B  
Emmett, ID 83617  
(208) 365-2222

**Fourth Street Gardens**

1723 E. 4th St.  
Emmett, ID 83617  
(208) 398-8273  
<http://www.FourthStreetGardens.com>

**Gem Butte Greenhouses**

2424 W. Idaho Blvd  
Emmett, ID 83617  
(208) 365-2834  
<http://www.edwardsgreenhouse.com>

**Get Lost Pest Control**

9032 Jordan Ln  
Middleton, ID 83644  
(208) 949-1003  
<http://www.getlostpest.com>

**ROCKY MOUNTAIN**

**True Value®**

**HARDWARE STORE**

**Help is Just Around The Corner**



**Angie & Bill Kurta**  
*Owners*

**132 S. Washington Ave., Emmett**  
**208-365-3135**

**Rocky Mountain  
Mechanical Inc.**

**A/C • Plumbing • Heating • Boilers**

**RESIDENTIAL • COMMERCIAL • INDUSTRIAL**

**208-365-PIPE**  
**(7473)**



ID State License #C10618

Bill Kurta

License, Bonded & Insured

1692514



**Northwest Landscape, LLC**  
P.O. Box 868  
Emmett, ID 83617  
(208) 695-7618  
<http://www.nw-landscape.com>

**Tree Maintenance**  
Emmett, ID 83617  
(208) 695-4026  
<http://www.treemaintenance.biz>

## HOSPICE

**Heart 'n Home Hospice & Palliative Care**  
306 S. Washington Ave.  
Emmett, ID 83617  
(208) 365-2099  
<http://www.gohospice.com>

**Lighthouse Hospice**  
827 S. Commercial Ave.  
Emmett, ID 83617  
(208) 576-6383  
<http://www.lighthousehospiceidaho.com>

**Signature Home Health and Hospice**  
3904 E. Flamingo  
Ste 100  
Nampa, ID 83687  
(208) 465-7121  
<http://www.signatureservice.com/>

## HOSPITAL

**Valor Health**  
1202 E. Locust  
Emmett, ID 83617  
(208) 365-3561  
<http://www.valorhealth.org/>

## INDIVIDUAL

**Dennis Colgan**  
1214 W Main St  
Emmett, ID 83617  
(208) 602-2754

**Dimmick, Al & Sue**  
2517 Monarch St.  
Emmett, ID 83617  
(208) 695-9333

**Stacy Gulley**  
1884 E. Main st  
Emmett, ID 83617  
(208) 860-9674

**Waters, Jim**  
812 Terry Dr.  
Emmett, ID 83617  
(208) 365-2188

## INSURANCE

**A. Ralph Gurney Agency**  
1500 S. Washington Ave. Ste A  
Emmett, ID 83617  
(208) 365-4150  
<http://www.farmers.com>

**Adalant**  
2005 E. Quail Run Rd. Ste. 2  
Emmett, ID 83617  
(208) 724-2291  
<http://www.myadalant.com>

**Buck Insurance Group, Inc.**  
602 S. Washington Ave.  
Emmett, ID 83617  
(208) 365-2160

**Farm Bureau Insurance**  
1312 S. Washington Ave Suite D  
Emmett, ID 83617  
(208) 365-5382

**Jenkins Insurance Services**  
807 S. Washington Ave.  
Emmett, ID 83617  
(208) 365-4488

**Joski Insurance**  
65 N. Plummer Rd.  
Star, ID 83669  
(208) 995-2892  
<http://www.joskiinsurance.com>

**Mike Taylor Insurance Agency, Inc.**  
820 S. Washington Ave  
Emmett, ID 83617  
(208) 365-2472  
<http://www.MikeTaylorInsurance.com>

**People's Financial Services, Inc.**  
119 E. Main St.  
Emmett, ID 83617  
(208) 365-4414

**The Insurance Group**  
444 Highway 16, Ste 102  
Emmett, ID 83617  
(208) 365-0115  
<http://www.treasurevalleyinsurance.com>

## INTERNET SERVICES

**Digi-Comm Home and Office**  
126 N. Washington Ave.  
Emmett, ID 83617  
(208) 398-7000  
<http://www.digi-comm-homeandoffice.com>

**Mettler Technology Consulting**  
119 W. Main St.  
Emmett, ID 83617  
(208) 369-2740  
<http://www.mettler.ws>

**Speedy Quick Networks, Inc**  
357 E. Watertower St. Suite E  
Meridian, ID 83642  
(208) 344-3837  
<http://speedyquick.net>

## INVESTING

**Adalant**  
2005 E. Quail Run Rd. Ste. 2  
Emmett, ID 83617  
(208) 724-2291  
<http://www.myadalant.com>

**Edward Jones**  
404 S. Washington Ave.  
Emmett, ID 83617  
(208) 365-3177  
<http://www.edwardjones.com>

## KIDS RECREATION

**Gem County Recreation District**  
107 E. Main St.  
Emmett, ID 83617  
(208) 365-5748  
<http://www.gemcountyrecreation.com>

**Patriot Center / Summit Youth Academy**  
330 W. Main St.  
Emmett, ID 83617  
(208) 365-3642  
<http://www.youththerapy.com>

## LAND SURVEYING

**Sawtooth Land Surveying, LLC**  
2030 S. Washington Ave.  
Emmett, ID 83617  
(208) 398-8104  
<http://www.sawtoothls.com>

## LANDSCAPING

**Emmett Landscape and Design**  
1322 E. Park St.  
Emmett, ID 83617  
(208) 369-1657  
<http://emmettlandscape.com>

**Meyers Lawn Service and Landscape**  
1897 Marsh Creek Rd  
Emmett, ID 83617  
(208) 440-4160

**Northwest Landscape, LLC**  
P.O. Box 868  
Emmett, ID 83617  
(208) 695-7618  
<http://www.nw-landscape.com>

**RNR Property Preservation & Landscaping**  
2345 Waterwheel  
Emmett, ID 83617  
(208) 985-4112

**Tree Maintenance**  
Emmett, ID 83617  
(208) 695-4026  
<http://www.treemaintenance.biz>

**LAUNDRY****Laundry Bag**

143 S. Washington Ave.  
Emmett, ID 83617  
(208) 557-8054  
<http://laundrybag.biz>

**Lily Pad Laundromat**

115 N. Hayes Ave.  
Emmett, ID 83617  
(208) 398-7321

**LIQUOR****Main Street Beverage**

212 W. Main St.  
Emmett, ID 83617  
(208) 365-3864

**LIVESTOCK****Highland Livestock and Land, Inc.**

PO Box 488  
Emmett, ID 83617  
(208) 365-4611  
<http://www.littlecattleco.com>

**Payette River Natural Beef**

6110 W. Black Canyon Hwy  
Emmett, ID 83617  
(208) 570-4408

**LOCKSMITH****Master Lock and Key, LLC**

Ryan Karrer  
Emmett, ID 83617  
(208) 365-5625  
<http://masterlockandkey.com>

**LODGING****Beijing Restaurant & RV Park**

1203 S. Washington Ave.  
Emmett, ID 83617  
(208) 365-3400 Restaurant

**Frozen Dog Digs Bed and Breakfast**

4325 Frozen Dog Rd.  
Emmett, ID 83617  
(208) 365-7372  
<http://frozendogdigs.com>

**Holiday Motel & RV Park**

1111 S. Washington Ave.  
Emmett, ID 83617  
(208) 365-4479  
<http://holidaymotelandrv.com/>

**Roystone Hot Springs**

7882 N. Hwy 52  
Sweet, ID 83670  
(208) 584-3371  
<http://www.roystonehotsprings.com>

**Seven Springs Ranch**

3800 E. Black Canyon Hwy  
Emmett, ID 83617  
(208) 817-0224  
<http://sevenspringsranch.org>

**MAINTENANCE SERVICES****M&M Carpet Cleaning**

1877 Fenton Dr.  
Emmett, ID 83617  
(208) 398-8770  
<http://www.mmmcarpet.net>

**Multi Clean, Inc.**

3154 Shellrock St.  
Emmett, ID 83617  
(208) 365-4316  
<https://idahomulticlean.com>

**MANUFACTURED HOMES****Santiago Monte Vista Estates**

701 Monte Vista Dr  
Emmett, ID 83617  
(208) 365-5309  
<http://www.santiagocorp.com>

**Santiago Sales**

Joanna Camarena  
591 W. La Cadena Dr.  
Riverside, CA 92501  
(951) 779-1765  
<http://www.santiagocorp.com>

**MANUFACTURER****ATTCO Inc. DBA Syclone ATTCO Service & Sky Hook**

8395 W Idaho Blvd  
Letha, ID 83636  
(208) 365-5770  
<http://www.skyhook.cc>

**MARKETING****Messenger Index**

120 N. Washington Ave.  
Emmett, ID 83617  
(208) 365-6066  
<http://www.messenger-index.com>

**Copy Plus**

120 E. Main St.  
Emmett, ID 83617  
(208) 365-0102  
<https://www.facebook.com/copy.plus.5?fref=ts>

**D&S Specialties, Inc.**

132 E. Main St  
Emmett, ID 83617  
(208) 365-5684  
<http://www.dands.biz>

**Emmett Connections Directory**

P.O. Box 311,  
(208) 278-5099  
<http://www.emmettconnections.com>

**Idaho Web Printers**

800 E. Locust  
Emmett, ID 83617  
(208) 365-1005

**MarketingNomads.com, Inc.**

378 E. Black Canyon Hwy.  
Emmett, ID 83617  
(310) 591-5587  
<http://marketingnomads.com>

**Names & Numbers**

450 Thain Rd.  
Lewiston, ID 83501  
(208) 791-7617  
<http://www.namesandnumbers.com>

**OpenPotion Website Design**

29681 Crest View Ln.  
Highland, CA 92346  
(208) 678-1667  
<http://www.openpotion.com>

**Smart Shoppers of Gem County**

Emmett, ID 83617  
(208) 365-2995

**Squaw Butte Signs**

615 S. Washington Ave.  
Emmett, ID 83617  
(208) 365-2285  
<http://www.squawbuttesigns.com>

**Your Name On This**

1105 S. Washington Avenue  
Emmett, ID 83617  
(208) 631-5830  
<http://www.ynotadvertising.net>

**MEDICAL & HEALTH SERVICES****Emmett Family Medicine & Direct Primary Care**

2001 E. Quail Run Rd.  
Emmett, ID 83617  
(208) 365-7131  
<http://www.emmettfamilymedicine.com>

**Heart 'n Home Hospice & Palliative Care**

306 S. Washington Ave.  
Emmett, ID 83617  
(208) 365-2099  
<http://www.gohospice.com>

**Horizon Home Health & Hospice**

312 E. Main St.  
Emmett, ID 83617  
(208) 365-1693  
<http://www.horizonhh.com>

**Meadow View Senior Living**

1013 S. Johns Ave.  
Emmett, ID 83617  
(208) 365-1122  
<http://www.meadowviewal.com>

**River's Edge Rehabilitation**

714 N. Butte Ave.  
Emmett, ID 83617  
(208) 365-4425  
<http://www.riversedgerehab.com>



**Schreck Chiropractic and Wellness**  
701 S. Washington Ave.  
Emmett, ID 83617  
(208) 365-1392  
<http://www.schreckchiro.com>

**Signature Home Health and Hospice**  
3904 E. Flamingo  
Ste 100  
Nampa, ID 83687  
(208) 465-7121  
<http://www.4signatureservice.com/>

**The Cottages of Emmett**  
411 E. 12th St.  
Emmett, ID 83617  
(208) 365-9490  
<http://www.thecottages.biz>

**Valley Family Health Care**  
207 E. 12th St.  
Emmett, ID 83617  
(208) 365-1065  
<http://www.vfhc.org>

**Valor Health**  
1202 E. Locust  
Emmett, ID 83617  
(208) 365-3561  
<http://www.valorhealth.org/>

## MEDICAL MANAGEMENT

**Heart 'n Home Hospice & Palliative Care**  
306 S. Washington Ave.  
Emmett, ID 83617  
(208) 365-2099  
<http://www.gohospice.com>

## NAILS

**Epic Day Spa**  
133 E. Main St.  
Emmett, ID 83617  
(208) 365-NAIL (6245)  
<http://www.epicdayspa.net/>

## NEWSPAPERS

**Messenger Index**  
120 N. Washington Ave.  
Emmett, ID 83617  
(208) 365-6066  
<http://www.messenger-index.com>

**Gem County Gazette**  
800 E. Locust  
Emmett, ID 83617  
(208) 365-1005

## NON-PROFIT ORGANIZATION

**Seven Springs Ranch**  
3800 E. Black Canyon Hwy  
Emmett, ID 83617  
(208) 817-0224  
<http://sevenspringsranch.org>

**Third District Guardian**  
1104 Blaine St  
Caldwell, ID 83606  
(208) 459-9969  
<http://3rddistrictguardian.org>

## NOTARY

**Sawtooth Land Surveying, LLC**  
2030 S. Washington Ave.  
Emmett, ID 83617  
(208) 398-8104  
<http://www.sawtoothls.com>

## NURSERY & LANDSCAPING

**Gem Butte Greenhouses**  
2424 W. Idaho Blvd  
Emmett, ID 83617  
(208) 365-2834  
<http://www.edwardsgreenhouse.com>

## NUTRITION

**Raw Iron Gym**  
121 S. Commercial Ave.  
Emmett, ID 83617  
(208) 447-9540  
<http://www.rawirongym.com>

## ORCHARDS

**7 Oaks Orchards, LLC**  
2563 W. South Slope Rd.  
Emmett, ID 83617  
(208) 940-7104  
<http://7oakslife.com>

**Candy Apple Orchard**  
1871 W. South Slope Rd.  
Emmett, ID 83617  
(208) 365-1413  
<http://www.candyappleorchard.com>

**Crimson Gem Orchard**  
2571 W. South Slope Rd.  
Emmett, ID 83617  
(208) 421-1950

**KL Farms**  
3620 Bishop Rd  
Emmett, ID 83617  
(208) 243-2963

**Tyler's Rocky Point Orchard**  
145 E. South Slope  
Emmett, ID 83617  
365-6160

**Waterwheel Gardens/  
Frozen Dog Fruit Stand**  
3700 Waterwheel road  
Emmett, ID 83617  
(208) 365-1156  
<http://www.waterwheelgardens.com>

**Williams Fruit Ranch**  
2455 W. South Slope Rd.  
Emmett, ID 83617  
(208) 365-7757

## ORGANIZATION

**Canyon County Habitat for Humanity**  
1404 1st St S.  
Nampa, ID 83652  
(208) 463-0864  
<http://canyonhabitat.org>

**Community Bible Church**  
120 E. 3rd St.  
Emmett, ID 83617  
(208) 365-3712  
<http://www.emmettcbc.org>

**Elderly Opportunity Agency, Inc**  
134 N. Washington Ave  
Emmett, ID 83617  
(208) 365-4461  
<http://www.eoaidaho.org>

**Emmett Community Arts Commission**  
No Physical Address  
Emmett, ID 83617  
<https://www.facebook.com/EmmettCommunityArtsCommission/>

**Emmett Rotary Club**  
301 W. Main St. Ste B  
Emmett, ID 83617  
(208) 859-5579  
<http://www.emmettrotary.org/>

**Emmett United Methodist Church**  
1500 E. Locust  
Emmett, ID 83617  
(208) 365-3242  
<http://www.emmettumc.org/>

**Gem County Sheriff's Posse**  
3730 Bishop Rd.  
Emmett, ID 83617  
(208) 477-8799  
<http://www.gemcountysheriffposse.org>

**Sacred Heart Catholic Church**  
211 E. 1st St.  
Emmett, ID 83617  
(208) 365-4320

## PAINT

**Rocky Mountain True Value**  
132 S. Washington Ave.  
Emmett, ID 83617  
TV (208) 365-3135 RMM 365-7473  
<https://ww3.truevalue.com/rockymtn/Home.aspx>

**Rodda Paint**  
1010 S Washington Ave  
Emmett, ID 83617  
(208) 365-3771  
<http://www.rodgapaint.com>

## PAINT SUPPLIES

**Rodda Paint**  
1010 S Washington Ave  
Emmett, ID 83617  
(208) 365-3771  
<http://www.rodgapaint.com>

## PARTY SUPPLIES

### I rentals

Emmett, ID 83617  
(208) 369-1381  
<http://isaacsonrentals.com>

## PAVEMENT REJUVENATORS

### North American Dust Control

2211 Schiller Rd.  
Emmett, ID 83617  
(208) 365-2930  
<http://northamericandustcontrol.com>

## PEST CONTROL

### Armis Pest Management

4914 Asbury Way  
Caldwell, ID 83607  
(208) 401-5350

### Get Lost Pest Control

9032 Jordan Ln  
Middleton, ID 83644  
(208) 949-1003  
<http://www.getlostpest.com>

## PHOTOGRAPHER

### Beattie Photography

3619 Beacon Ave  
Emmett, ID 83617  
(208) 867-0317  
<http://www.beattiephotography.smugmug.com>

### Leap Photography

2675 W. Main St. #205  
Boise, ID 83702  
(208) 703-7360  
<http://www.leapphotography.com>

## PLANNING SERVICES

### Cherry Creek Events

680 E. Central Rd  
Emmett, ID 83617  
(208) 369-0640  
<http://www.cherrycreekevents.com>

## PLUMBING

### Affordable Plumbing Inc.

889 Sunset Dr.  
Emmett, ID 83617  
(208) 365-6737  
<http://affordableplumbinginc.yolasite.com/>

### Custom Pump Services

1802 W. Idaho Blvd.  
Emmett, ID 83617  
(208) 369-0859  
<http://custompumpservices.com/>

### Goff's Plumbing

1235 Allen Ln.  
Emmett, ID 83617  
(208) 365-4257

### Rocky Mountain True Value

132 S. Washington Ave.  
Emmett, ID 83617  
TV (208) 365-3135 RMM 365-7473  
<https://www.truevalue.com/rockymtn/Home.aspx>

## PRINT SERVICES

### Copy Plus

120 E. Main St.  
Emmett, ID 83617  
(208) 365-0102  
<https://www.facebook.com/copy.plus.5?ref=ts>

### Emmett Connections Directory

P.O. Box 311,  
(208) 278-5099  
<http://www.emmettconnections.com>

### Idaho Web Printers

800 E. Locust  
Emmett, ID 83617  
(208) 365-1005

### Valley Office Systems

5461 W Kendall  
Boise, ID 83706  
(208) 384-5954  
<http://valleyofficesystems.com>

## PROFESSIONAL SERVICES

### Cherry Creek Events

680 E. Central Rd  
Emmett, ID 83617  
(208) 369-0640  
<http://www.cherrycreekevents.com>

### Elkins Dental

1110 S. Washington Ave.  
Emmett, ID 83617  
(208) 369-4532  
<http://www.elkinsdental.com>

### Leavitt, Laura

2300 Haw Creek Blvd  
Emmett, ID 83617  
(208) 695-7229

### Linville, Richard

P.O. Box 671  
Emmett, ID 83617  
(208) 365-2106

### RABCO

2459 E. Black Canyon Hwy  
Emmett, ID 83617  
(208) 365-4831

## PROMOTIONAL ITEMS

### D&S Specialties, Inc.

132 E. Main St  
Emmett, ID 83617  
(208) 365-5684  
<http://www.dands.biz>

### Names & Numbers

450 Thain Rd.  
Lewiston, ID 83501  
(208) 791-7617  
<http://www.namesandnumbers.com>

### Squaw Butte Signs

615 S. Washington Ave.  
Emmett, ID 83617  
(208) 365-2285  
<http://www.squawbuttesigns.com>

### Your Name On This

1105 S. Washington Avenue  
Emmett, ID 83617  
(208) 631-5830  
<http://www.ynotadvertising.net>

## PROPERTY MANAGEMENT

### Evans Realty LLC

1302 S. Washington Ave.  
Emmett, ID 83617  
(208) 365-4495  
<http://www.EvansRealtyLLC.com>

### Orchard Valley Apartments

1000 Fernlee St.  
Emmett, ID 83617  
(208) 559-3954  
<http://syringaproperties.com>

### Ross Island Apartments

561 N. Moffatt Ave.  
Emmett, ID 83617  
(208) 649-1470

## PUBLISHING

### Oregon Trail Publications

Lisa Mathews  
4371 Grandview Lane  
Ontario, OR 97914  
(541)212-0914

## REAL ESTATE

### Alliance Title & Escrow

1312 S. Washington Ave, Ste F  
Emmett, ID 83617  
(208) 365-4486  
<http://www.alliancetitle.com>

### Amazing Idaho Real Estate

510 S. Washington Ave  
Emmett, ID 83617  
(208) 365-9500  
<http://www.amazingidahorealestate.com>

### Amazing Idaho Real Estate — Ciara Warner

519 S. Washington Ave  
Emmett, ID 83617  
(208) 949-7298

### Amazing Idaho Real Estate — Lucinda McClain

510 S. Washington Ave.  
Emmett, ID 83617  
(208) 365-9500  
<http://www.amazingidahorealestate.com>

### Amazing Idaho Real Estate — Vicky Churchfield

510 S. Washington Ave.  
Emmett, ID 83617  
(208) 830-2050  
<http://vickychurchfieldrealtor.com>



### Boise Regional Realtors

9550 W. Bethel Ct  
Boise, ID 83709  
(208) 376-0363  
<http://boirealtors.com/>

### Coldwell Banker Tomlinson Group

Tempe McFarlane  
408 S. Eagle Rd, Suite 103  
Eagle, ID 83616  
(208) 880-8254  
<http://tempelovesidaho.listingbook.com/>

### Dennis Colgan

1214 W Main St  
Emmett, ID 83617  
(208) 602-2754

### Evans Realty — John & Teena Turner

1302 S. Washington Ave.  
Emmett, ID 83617  
(208) 365-4495  
<http://www.EvansRealtyLLC.com>

### Evans Realty — John Evans

1302 S. Washington Ave.  
Emmett, ID 83617  
(208) 365-4495  
<http://www.johnevans.cc>

### Evans Realty LLC

1302 S. Washington Ave.  
Emmett, ID 83617  
(208) 365-4495  
<http://www.EvansRealtyLLC.com>

### Group One | Sotheby's International Realty — Bowman Group

225 E. South Slope  
Emmett, ID 83617  
(208) 365-0210 (Patti)  
<http://www.PattiBowman.com>

### John L. Scott — Michelle Welch

Emmett, ID 83617  
(208) 350-0888  
<http://mwelch.johnlscott.com>

### Pioneer Title Company

1500 S. Washington Ave. Ste A  
Emmett, ID 83617  
(208) 365-5343  
<http://www.pioneertitleco.com>

### Property Management Services

1302 S. Washington Ave.  
Emmett, ID 83617  
(208) 861-9090  
<http://www.EvansRealtyLLC.com>

### The Real Estate Shop, LLC

13965 W. Chinden Blvd. #108  
Boise, ID 83713  
(208) 968-1473  
<http://idahorealestateshop.com>

## REALTOR

### Amazing Idaho Real Estate

510 S. Washington Ave  
Emmett, ID 83617  
(208) 365-9500  
<http://www.amazingidahorealestate.com>

### Amazing Idaho Real Estate — Vicky Churchfield

510 S. Washington Ave.  
Emmett, ID 83617  
(208) 830-2050  
<http://vickychurchfieldrealtor.com>

### Coldwell Banker Tomlinson Group

Tempe McFarlane  
408 S. Eagle Rd, Suite 103  
Eagle, ID 83616  
(208) 880-8254  
<http://tempelovesidaho.listingbook.com/>

### Evans Realty — John & Teena Turner

1302 S. Washington Ave.  
Emmett, ID 83617  
(208) 365-4495  
<http://www.EvansRealtyLLC.com>

### Evans Realty — John Evans

1302 S. Washington Ave.  
Emmett, ID 83617  
(208) 365-4495  
<http://www.johnevans.cc>

### Evans Realty LLC

1302 S. Washington Ave.  
Emmett, ID 83617  
(208) 365-4495  
<http://www.EvansRealtyLLC.com>

### Group One | Sotheby's International Realty — Bowman Group

225 E. South Slope  
Emmett, ID 83617  
(208) 365-0210 (Patti)  
<http://www.PattiBowman.com>

### John L. Scott - Michelle Welch

Emmett, ID 83617  
(208) 350-0888  
<http://mwelch.johnlscott.com>

## RECREATION

### Gem County Golf Association

2102 W. Salesyard Rd.  
Emmett, ID 83617  
(208) 365-2675  
<http://www.emmettcitygolf.com>

### Gem County Recreation District

107 E. Main St.  
Emmett, ID 83617  
(208) 365-5748  
<http://www.gemcountyrecreation.com>

## REHABILITATION

### Community Partnerships of Idaho, Inc.

608 S. Washington Ave.  
Emmett, ID 83617  
(208) 365-5781  
<http://www.mycpid.com>

### Gem County Recovery Community Center

115 S. McKinley  
Emmett, ID 83617  
(208) 398-5151  
<http://emmettrecovery.com>

### River's Edge Rehabilitation

714 N. Butte Ave.  
Emmett, ID 83617  
(208) 365-4425  
<http://www.riversedgerehab.com>

### Rose Advocates Gem Family

**Resource Center**  
**Gem Co Family Resource Center**  
Dolores Larsen  
Weiser, ID 83672  
(208) 365-1615  
<http://roseadvocates.org>

## RENTALS

### Evans Realty LLC

1302 S. Washington Ave.  
Emmett, ID 83617  
(208) 365-4495  
<http://www.EvansRealtyLLC.com>

### I rentals

Emmett, ID 83617  
(208) 369-1381  
<http://isaacsonrentals.com>

### John L. Scott — Michelle Welch

Emmett, ID 83617  
(208) 350-0888  
<http://mwelch.johnlscott.com>

### Property Management Services

1302 S. Washington Ave.  
Emmett, ID 83617  
(208) 861-9090  
<http://www.EvansRealtyLLC.com>

## RESIDENTIAL

### Evans Realty — John & Teena Turner

1302 S. Washington Ave.  
Emmett, ID 83617  
(208) 365-4495  
<http://www.EvansRealtyLLC.com>

### Evans Realty — John Evans

1302 S. Washington Ave.  
Emmett, ID 83617  
(208) 365-4495  
<http://www.johnevans.cc>

**Evans Realty LLC**  
1302 S. Washington Ave.  
Emmett, ID 83617  
(208) 365-4495  
<http://www.EvansRealtyLLC.com>

**Group One | Sotheby's International Realty — Bowman Group**  
225 E. South Slope  
Emmett, ID 83617  
(208) 365-0210 (Patti)  
<http://www.PattiBowman.com>

**John L. Scott — Michelle Welch**  
Emmett, ID 83617  
(208) 350-0888  
<http://mwelch.johnlscott.com>

**Santiago Monte Vista Estates**  
701 Monte Vista Dr  
Emmett, ID 83617  
(208) 365-5309  
<http://www.santiagocorp.com>

**Santiago Sales**  
Joanna Camarena  
591 W. La Cadena Dr.  
Riverside, CA 92501  
(951) 779-1765  
<http://www.santiagocorp.com>

## RESTAURANT

**Beijing Restaurant & RV Park**  
1203 S. Washington Ave.  
Emmett, ID 83617  
(208) 365-3400 Restaurant

**Blue Ribbon Bakery**  
515 S. Washington Ave.  
Emmett, ID 83617  
(208) 365-3290  
<http://www.facebook.com/home.php#!/pages/Blue-Ribbon-Cafe-Bakery/161337514950>

**Cold Mountain Creek Restaurant**  
1825 Hwy 16  
Emmett, ID 83617  
(208) 365-1570  
<https://www.facebook.com/coldmountaincreek>

**Cowboys Chophouse**  
101 E. Main St.  
Emmett, ID 83617  
(208) 369-4740  
<https://cowboyschophouse.com/>

**Emmett Yacht Club**  
Marty Huguenin  
117 W Main St  
Emmett, ID 83617  
(208) 365-2995

**Gem Valley Arctic Circle**  
1205 S. Washington Ave  
Emmett, ID 83617  
(208) 365-1172  
<http://www.acburger.com>

**Idaho Pizza Company**  
1312 S. Washington Ave.  
Emmett, ID 83617  
(208) 365-3550  
<http://www.idahopizzacompany.com>

**La Costa Mexican Restaurant**  
517 N. Washington Ave.  
Emmett, ID 83617  
(208) 365-1567

**Ola Inn Cafe**  
22001 Sweet Ola Hwy  
Ola, ID 83657  
(208) 584-3737

**Papa Murphy's**  
Leslie McMillian  
412 E. Parkcenter Blvd  
Boise, ID 83706  
(208) 398-8811  
<http://www.papamurphys.com>

**Pizza Factory**  
102 W. 5th St.  
Emmett, ID 83617  
(208) 398-7777

## RETAIL

**Albertsons**  
640 HWY 16  
Emmett, ID 83617  
(208) 365-4420  
<http://www.albertsons.com>

**Bears Knight Out**  
1120 Royalty Ave.  
Emmett, ID 83617  
(208) 859-4526

**Costco Wholesale**  
16700 N. Marketplace  
Nampa, ID 83687  
(208) 465-3818  
<http://www.costco.com>

**D&B Supply**  
111 Hwy 16  
Emmett, ID 83617  
(208) 963-7040  
<http://www.mydbsupply.com>

**Hen House Home & Gift**  
137 W. Main St.  
Emmett, ID 83617  
(208) 398-8300

**Main Street Beverage**  
212 W. Main St.  
Emmett, ID 83617  
(208) 365-3864

**Rodda Paint**  
1010 S Washington Ave  
Emmett, ID 83617  
(208) 365-3771  
<http://www.rodgapaint.com>

**Snake River Pool & Spa, Inc.**  
3036 N. Eagle Rd.  
Meridian, ID 83646  
(208) 468-8827

<http://www.thespateam.com>  
**The Barn Door**  
140 W. Main St  
Emmett, ID 83617  
(208) 365-0662  
<http://shoptkwalker.com>

**Tractor Supply Company**  
1019 S. Washington Ave.  
Emmett, ID 83617  
(208) 365-2088  
<http://www.tractorsupply.com>

**Young's Store**  
1508 Elm Place  
Meridian, ID 83642  
(208) 869-2313

## SERVICE ORGANIZATION

**Cherry Creek Events**  
680 E. Central Rd  
Emmett, ID 83617  
(208) 369-0640  
<http://www.cherrycreekevents.com>

**Community Partnerships of Idaho, Inc.**  
608 S. Washington Ave.  
Emmett, ID 83617  
(208) 365-5781  
<http://www.mycpid.com>

**Emmett Rotary Club**  
301 W. Main St. Ste B  
Emmett, ID 83617  
(208) 859-5579  
<http://www.emmettrotary.org/>

**Gem County Fairgrounds**  
2199 S. Johns Ave.  
Emmett, ID 83617  
(208) 365-6828  
<http://www.gemcounty.org/fairgrounds>

**Gem County Sheriff's Posse**  
3730 Bishop Rd.  
Emmett, ID 83617  
(208) 477-8799  
<http://www.gemcountysheriffposse.org>

**Rose Advocates Gem Family Resource Center**  
**Gem Co Family Resource Center**  
Dolores Larsen  
Weiser, ID 83672  
(208) 365-1615  
<http://roseadvocates.org>

**Valley of Plenty Quilters**  
PO Box 804  
Emmett, ID 83617



**Veteran's Memorial Hall**

120 N. Hayes  
Emmett, ID 83617  
(208) 695-8916  
<http://www.americanlegionpost49.org>

**SIDING****Foundation Supportworks of Idaho**

132 E. State St.  
Eagle, ID 83616  
(208) 908-1014  
<http://www.foundationrepairidaho.com>

**SPA****Epic Day Spa**

133 E. Main St.  
Emmett, ID 83617  
(208) 365-NAIL (6245)  
<http://www.epicdayspa.net/>

**Snake River Pool & Spa, Inc.**

3036 N. Eagle Rd.  
Meridian, ID 83646  
(208) 468-8827  
<http://www.thespateam.com>

**SPORTING GOODS****Character Lures, LLC**

PO Box 1043  
Emmett, ID 83617  
(208) 398-6189  
<http://www.characterlures.com>

**STORAGE UNITS****Downtown Storage**

301 W. Main St. Ste. B  
Emmett, ID 83617  
(208) 398-8580

**TANNING****Epic Day Spa**

133 E. Main St.  
Emmett, ID 83617  
(208) 365-NAIL (6245)  
<http://www.epicdayspa.net/>

**TECHNOLOGY****7th Dimension LLC**

116 N. Commercial Ave.  
Emmett, ID 83617  
(208) 477-1222  
<http://www.7thdi.com>

**Computaters**

117 E. Main St.  
Emmett, ID 83617  
(208) 365-3632  
<http://www.computaters.com>

**Digi-Comm Home and Office**

126 N. Washington Ave.  
Emmett, ID 83617  
(208) 398-7000  
<http://www.digi-comm-homeandoffice.com>

**Mettler Technology Consulting**

119 W. Main St.  
Emmett, ID 83617  
(208) 369-2740  
<http://www.mettler.ws>

**OpenPotion Website Design**

29681 Crest View Ln.  
Highland, CA 92346  
(208) 678-1667  
<http://www.openpotion.com>

**THRIFT STORE****New Leaf Thrift Store**

116 E Main St  
Emmett, ID 83617  
(208) 369-4215  
<http://www.newleafministriesthrift.org>

**TIRES****Commercial Tire**

309 N. Washington Ave.  
Emmett, ID 83617  
(208) 365-5066  
<http://www.commercialtire.com>

**Les Schwab Tire Center**

419 N. Washington Ave.  
Emmett, ID 83617  
(208) 365-3548  
<https://www.lesschwab.com/store/id/emmett/104>

**TITLE COMPANY****Alliance Title & Escrow**

1312 S. Washington Ave, Ste F  
Emmett, ID 83617  
(208) 365-4486  
<http://www.alliancetitle.com>

**Pioneer Title Company**

1500 S. Washington Ave. Ste A  
Emmett, ID 83617  
(208) 365-5343  
<http://www.pioneertitleco.com>

**TRANSLATOR****Leavitt, Laura**

2300 Haw Creek Blvd  
Emmett, ID 83617  
(208) 695-7229

**TV SERVICES****Digi-Comm Home and Office**

126 N. Washington Ave.  
Emmett, ID 83617  
(208) 398-7000  
<http://www.digi-comm-homeandoffice.com>

**UTILITY****City of Emmett**

501 E. Main St.  
Emmett, ID 83617  
(208) 365-6050  
<http://www.cityofemmett.org/>  
**Emmett Sanitation**  
2200 S. Boise Ave  
Emmett, ID 83617  
(208) 365-6103  
<http://www.idwaste.com>

**Idaho Power**

P.O. Box 70  
Boise, ID 83707  
(208) 388-2323  
<http://www.idahopower.com>

**Intermountain Gas Company**

2921 Caldwell Blvd.  
Nampa, ID 83651  
(208) 468-6722  
<http://www.intgas.com>

**Mackey Electric**

405 N. Washington Ave.  
Emmett, ID 83617  
(208) 365-4228  
<http://mackeyelectricidaho.com>

**VETERINARY****Animal Medical Center of Emmett**

2588 Waterwheel Rd.  
Emmett, ID 83617  
(208) 365-5396  
<https://animalmedicalcenteremmett.com/>

**Gem Veterinary Clinic**

703 S. Washington Ave.  
Emmett, ID 83617  
(208) 365-6008  
<http://www.GemVet.com>

**WEB SERVICES****OpenPotion Website Design**

29681 Crest View Ln.  
Highland, CA 92346  
(208) 678-1667  
<http://www.openpotion.com>

**WELDING****Iron Angel Metalworks LLC**

2599 W. Success Way  
Ste. 2  
Emmett, ID 83617  
(208) 519-1793  
<http://www.ironangelmetalworks.com>

**WINDOW CLEANING****Butler's Window Cleaning**

1103 Royalty Ave.  
Emmett, ID 83617  
(208) 695-8916

**Multi Clean, Inc.**

3154 Shellrock St.  
Emmett, ID 83617  
(208) 365-4316  
<https://idahomulticlean.com>

**WIRELESS COMMUNICATION****Digi-Comm Home and Office**

126 N. Washington Ave.  
Emmett, ID 83617  
(208) 398-7000  
<http://www.digi-comm-homeandoffice.com>



“Let’s find the perfect canvas for your life”.

**John L. Scott®**  
REAL ESTATE



**Michelle Welch**

real estate professional

208.350.0888

[mwelch.johnlscott.com](http://mwelch.johnlscott.com)

[mwelch@johnlscott.com](mailto:mwelch@johnlscott.com)



# Santiago Monte Vista

*Together with*



*Beautiful Family Community*

New Homes Coming Soon!

Vacant Lots Available

Financing Available

Affordable Down Payment

*From the moment you walk in, you'll know that you are home.*

*And you'll have peace of mind that you've selected a home  
backed by the solid reputation of Santiago Sales.*

*We are a proud member of  
Gem County's Chamber of Commerce*

701 Monte Vista Drive Emmett, ID 83617



**DEPENDABLE and  
KNOWLEDGEABLE**  
agent seeks customers  
looking for real  
**PROTECTION** and long  
term **RELATIONSHIP.**

## Mike Taylor Ins Agcy Inc

Mike Taylor, Agent

820 S Washington Ave

[www.miketaylorinsurance.com](http://www.miketaylorinsurance.com)

Bus: 208-365-2472

## Look no further.

Having one special person for your car, home and life insurance lets you get down to business with the rest of your life. It's what I do.

**GET TO A BETTER STATE™.**  
**CALL ME TODAY.**



State Farm Mutual Automobile Insurance Company,  
State Farm Indemnity Company, State Farm Fire and Casualty Company,  
1101201.1 State Farm General Insurance Company, Bloomington, IL



# WALLACE FAMILY DENTISTRY

Complete dental care for your family.

Darren Wallace, D.M.D.

Andrea Wallace, D.M.D.

**OFFICE HOURS:**

MON 8:00 - 5:00  
TUE 8:00 - 5:00  
WED 7:00 - 4:00  
THUR 7:00 - 2:00



**EMERGENCIES SEEN  
SAME DAY!**

- ☐ Bleaching / Tooth Whitening
- ☐ Endodontics (Root Canal)
- ☐ Laser Cavity Diagnosis
- ☐ Implants & Implant Supported Dentures

Digital X-Ray & Intra-Oral Camera

 **CareCredit**<sup>SM</sup>

**NEW!** Your crowns  
made SAME DAY as your appointment

**CEREC**  
One-visit dentistry

*No dental insurance?  
Call us to learn about  
our membership  
discount program!*

**208-365-3534** NEW PATIENTS WELCOME  
**2003 E Quail Run Rd, Emmett Idaho**  
**[www.wallace-dentistry.com](http://www.wallace-dentistry.com)**

1840715

**"AS GOOD AS THE GREAT OUTDOORS!"**



**Pizza**  
Lunch  
Specials



**Sandwiches**

**HOST YOUR BIRTHDAY PARTIES AND SPECIAL OCCASIONS  
IN OUR BANQUET ROOM!  
ALSO GREAT FOR OFFICE PARTIES AND BUSINESS MEETINGS!  
CALL FOR MORE INFORMATION ON OUR LARGE BANQUET ROOM.**



**Starters**



**Dine in  
Delivery or  
Pick Up!**

**Salad Bar**

**1312 S. WASHINGTON AVE., EMMETT, ID 83617 • 208-365-3550**





# GEM

Veterinary+Clinic

**We treat small pets & livestock**

***Mark Howlett, D.V.M.***  
***Jaime Paeschke, D.V.M.***  
***(Large/Small Animals)***



**WE DO  
HOUSE CALLS**

**703 S. Washington Ave.**  
**Emmett, ID 83617**  
**208-365-6008**  
**[www.gemvet.com](http://www.gemvet.com)**





**Emmett Messenger Index**

EmmettMessenger-Index.com



**LIKE US ON  
FACEBOOK!**



**FOLLOW US ON  
TWITTER!**

**120 N. Washington Ave.  
Emmett, Idaho 83617  
208-365-6066**



## **ADVERTISING DISPLAY**

**Advertising Executive – Ext. 3**

*ads@messenger-index.com*

**Classifieds – Ext. 4**

*ads@messenger-index.com*

**Subscriptions – Ext. 1**

*customerservice@messenger-index.com*

**Display Advertising deadline – Thursday 5 p.m.**

**Classified deadline – Monday 10:30 a.m.**

**Legals deadline – Thursday 10 a.m.**

## **EDITORIAL**

**GM/Managing Editor, Diana Baird, Ext. 7**

*dbaird@messenger-index.com*

**Reporter, Del Gray – Ext. 6**

*dgray@messenger-index.com*



For only  
**\$10**  
you can own this  
commemorative magazine.

### **EDITORIAL DEADLINES**

**Editorial content – Thursday noon**

**Obituaries – Monday 9 a.m.**

### **BREAKING NEWS BLASTS**

*Sign up at [www.messenger-index.com](http://www.messenger-index.com)*

### **FULL ONLINE VERSION**

Available at

*[www.messenger-index.com](http://www.messenger-index.com)*

**Pick up a free County & City  
map at our office**





# Tempe McFarlane

REALTOR

208-880-8254

Full-Service. Specializing in  
**HELPING PEOPLE.**

**COLDWELL  
BANKER** 

**TOMLINSON GROUP**

*Raised in Idaho...  
Experienced in Idaho  
Real Estate.*

- *Residential & vacation homes,  
land, ranch, farm,  
commercial, etc.*

*2013 Humanitarian  
Award Recipient*

**ACTIVE IN:** \_\_\_\_\_

**My community, 4-H, Gem County Chamber,  
Red Cross, Realtor Outreach &  
Payette River Cattlemans's Association.**

**[Tempe@TempeLovesIdaho.com](mailto:Tempe@TempeLovesIdaho.com)**



**SERVING IDAHO AND BEYOND, FOR OVER 14 YEARS.  
WE CAN HELP YOU RE-LOCATE WORLD-WIDE**