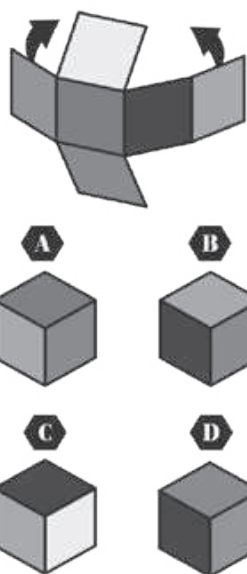


CUBE IT!

The six-sided shape below can be folded to form a cube. Only two of the cubes below can be made by it. Which are they?



SPOT THE DIFFERENCE

Can you spot all 20 differences between these two carnival-themed illustrations?

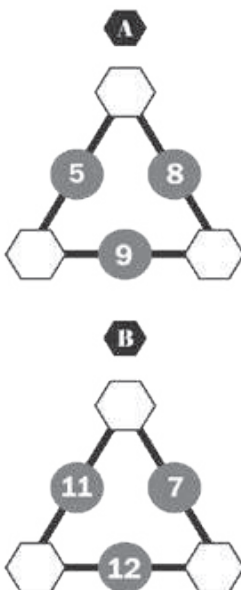


NUMBER TRIANGLES

In the triangles below, the numbers inside the red circles are the sums of the two numbers in the connected white hexagons. For example:

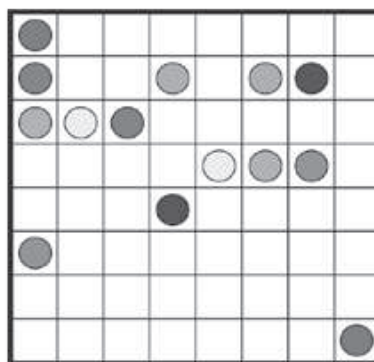


Can you figure out which number should appear in each of the hexagons? All the numbers in the hexagons are between 1 and 10, and a number can only be used once in each of the triangles.



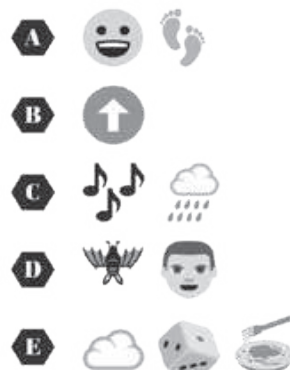
CONNECT THE DOTS

Draw a line to connect each pair of dots. You can't use diagonal lines and the lines can't cross or touch each other. You must fill the whole grid with lines but only one line is allowed in each square.



EMOJI IDIOMS

Each of these emoji sequences represents the title of a popular film. Can you figure out the name of the movie in each case?



SUDOKU

Fill all the empty squares so that every row, column, and 3x2 box contains each of the numbers 1 to 6.

6	2				1
	3	1	6		
	6	3		4	
	4	5	2		
4	1			3	6
		6			2

PUZZLES & GAMES!

Test your family's brainpower by tackling these mind-boggling challenges. If you get stuck, you can find the answers at: whatonearthmag.com/answers

QUICK QUIZ

1 Elephants and sloths are among the types of animals that cannot do what?

- a. Jump
- b. Run
- c. Climb
- d. Sleep

2 From what height could a squirrel fall without being killed when it lands on the ground?

- a. 10 feet
- b. 100 feet
- c. 1,000 feet
- d. Any height

3 What was the first mammal to be cloned?

- a. Fruit fly
- b. Rat
- c. Sheep
- d. Dog

4 What is a name for a group of dolphins?

- a. A leap
- b. A shoal
- c. A swim
- d. A pod



5 Beneath its white fur, what color is a polar bear's skin?

- a. Black
- b. Brown
- c. White
- d. Pink

6 According to paleontologists' research into the fossil record, which of the following living organisms have been alive on Earth for the longest period of time?

- a. Worms
- b. Sponges
- c. Jellyfish
- d. Bees



7 What is the name for a baby elephant?

- a. Calf
- b. Whelp
- c. Pup
- d. Cub

8 How long can an emperor penguin hold its breath underwater?

- a. 10 minutes
- b. 15 minutes
- c. 20 minutes
- d. 30 minutes

9 Which of these animals has fingerprints that are nearly identical to those of humans?

- a. Dog
- b. Koala
- c. Gorilla
- d. Chameleon

10 The closest living relative of the fearsome dinosaur *Tyrannosaurus rex* is...

- a. A mammal
- b. A bird
- c. A reptile
- d. A fish

11 How many individual toes does a typical housecat have in total on



its four paws? (Hint: if you have a pet cat, you could try counting its toes for yourself!)

- a. 12
- b. 16
- c. 18
- d. 20

12 Which of these four insects produces the loudest sound?

- a. Cricket
- b. Grasshopper
- c. Cicada
- d. Hornet

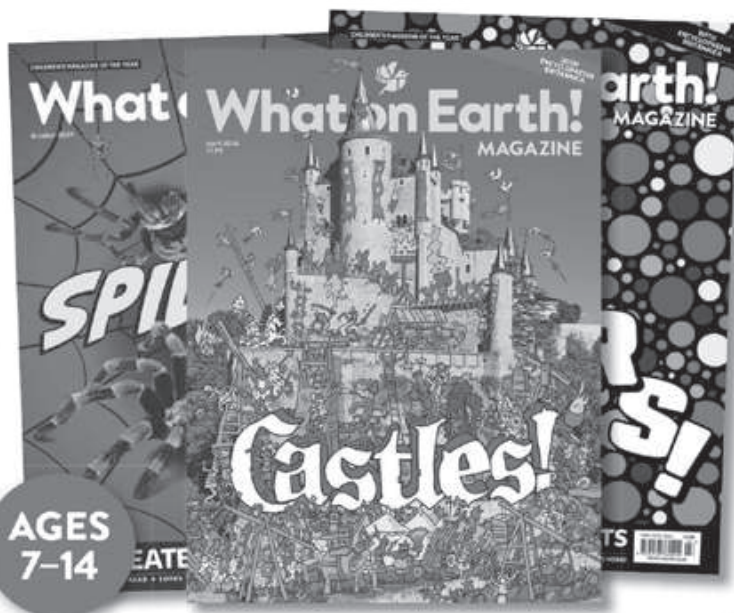


What on Earth! Magazine

Welcome to **What on Earth! Magazine**, the fun and fascinating way to help curious kids ages 7-14 fall in love with reading and learning. From animals and space to history and sports, each issue is bursting with engaging topics — and is created in partnership with Encyclopaedia Britannica.

FREE GIFT WORTH \$30

New subscribers will also receive a fantastic free gift — a hardcover copy of the brilliant "America As It Happened" worth \$30*.



SUBSCRIBE FOR \$69.99 AND RECEIVE A YEAR'S WORTH OF MAGAZINES — PLUS A FREE HISTORY BOOK WORTH \$30*



FREE GIFT WORTH \$30!

