



A spike used on the old Logan trolley tracks is seen after being unearthed this week during excavation work on Center Street. At left, a work crew is seen installing the tracks for the depot-to-college line in 1909, just around the corner, on the 100 block of North Main Street.

UNEARTHED

A worker with Legrand Johnson Construction cuts through early 20th century trolley rails unearthed on Center Street in Logan this week.



Center St. project exposes long-buried Logan trolley tracks

Excitement was high this week as work crews broke up century-old pavement on Center Street in Logan as part of a downtown improvement project. The reason: Engineers knew that tracks from the city's first trolley line were buried underneath.

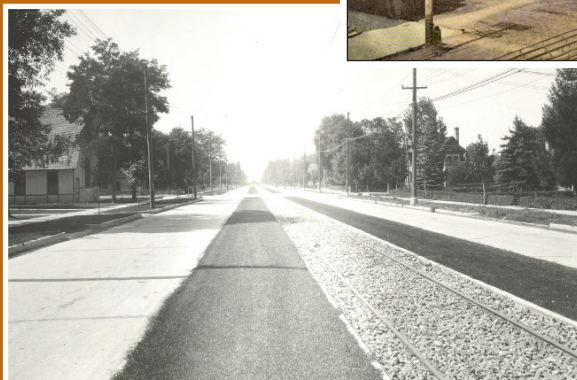
What was originally called the Logan Transit Company inaugurated the line running from the train depot at 600 W. Center St. to the Agricultural College of Utah (now Utah State University) on Dec. 30, 1909. By the time the trolley service was shut down in 1947, it had grown to cover much of Cache Valley and included a connection to the Wasatch Front.

This week's demolition and salvage project was done by LeGrand Johnson Construction under a contract with the city of Logan. Assistant City Engineer Tom Dickinson, who is in charge of the entire Center Street project, was contacted by residents wanting to search the rubble for artifacts or obtain pieces of the track as mementos, but he noted LeGrand Johnson has the salvage contract and singling out individuals would likely violate surplus regulations.

Mayor Holly Daines said she has asked to company to save some of the rail for the city. "At some point, as we make more mid-block pedestrian connections and walkways, I envision maybe setting them in a section of sidewalk and adding some sort of historical marker — maybe a historical walk with a variety of markers," she said.



Trolley token



A painted black-and-white photo, above, decorates a postcard showing the Logan trolley at Center and Main (circa 1910-11), before the streets were paved. At left is a view of the trolley tracks along Center Street in 1919 with strips of grass and concrete on either side. And at far left, a worker cuts away a section of the track after it was exposed during road work in 1990.