



Decatur - Macon County, Illinois



Decatur is home to **76,140** people living in **31,287** households with a median household income of **\$40,679**. In 2010, **24.3%** of the people lived at or below the poverty level. Macon County has a population of **110,768** people, including the people that live in Decatur¹.

The unemployment rate for the Decatur Metropolitan Area was **6.4%** in December 2016 and has not fallen below the U.S. unemployment rate since 2006 or under the Illinois unemployment rate since early 2012². The Cost of Living in Decatur is **18.1%** below the national average³.

Global Manufacturing Hub

Macon County is home to 7,229 businesses, 5,042 in Decatur⁴. Production and operations facilities for prominent companies are located in Decatur and include:

- ADM, 4th largest Illinois company and 41st on the list of *Fortune 500* companies⁵
- Caterpillar, 5th largest Illinois company and 59th on the list of *Fortune 500* companies⁶
- London-based Tate and Lyle, a FTSE 250 company on the London Stock exchange⁷
- Akorn, Inc., a global niche pharmaceutical company that develops, manufactures and markets generic and branded prescription pharmaceuticals as well as animal and consumer health products⁸
- Norfolk Southern Railroad with its only downstate intermodal facility located in Decatur



1 <http://www.census.gov/quickfacts/table/PST045215/17115,1718823>

2 http://www.bls.gov/eag/eag.il_decatur_msa.htm

3 <http://www.forbes.com/places/il/decatur/>

4 <http://www.census.gov/quickfacts/table/BZA010214/17115,1718823>

5 <http://fortune.com/fortune500/list/filtered?hqstate=IL>

6 Ibid

7 <http://www.ftse.com/products/indices/uk>

8 <http://akorn.com/>

Decatur is 36th on *Forbes* Cost of Doing Business List⁹



Locally-based Businesses Laying the Foundation for Growth

Thousands of jobs are provided by businesses that thrive regionally and locally. Large employers that are based in the area include:

- Decatur Memorial Hospital, recognized as a 2015 50 Top Cardiovascular Hospital from Truven Health Analytics and was named one of the nation's 100 Top Hospitals® by Thomson Reuters in 2011¹⁰
- The Kelly Group, provides general construction and metal fabrication services for industrial markets in the Midwest¹¹
- St. Mary's Hospital, offers a broad spectrum of comprehensive health services, including the latest diagnostic equipment, interventional cardiology, surgical and medical intervention, emergency medical care, outpatient radiation therapy, pain management and a sleep center¹²
- Ameren Illinois, a regulated electric and gas delivery company
- The Dunn Company, a leader in the paving, milling and stabilization business¹³
- Mueller Co., known for innovative Water Distribution Products that are used throughout the water system from source to customer¹⁴
- Bodine Electric, providing electrical contracting, electrical wholesale, electro-mechanical service and repair, electrical system repair, communications systems and repair, signage, and traffic control serving a multistate market including Illinois, Indiana, Iowa, Missouri and Tennessee¹⁵

Higher Education Provides Economic Opportunities

9 <http://www.forbes.com/places/il/decaturn/>

10 <https://www.dmhcares.com/about-us/>

11 <http://www.thekelly-group.com/index.php>

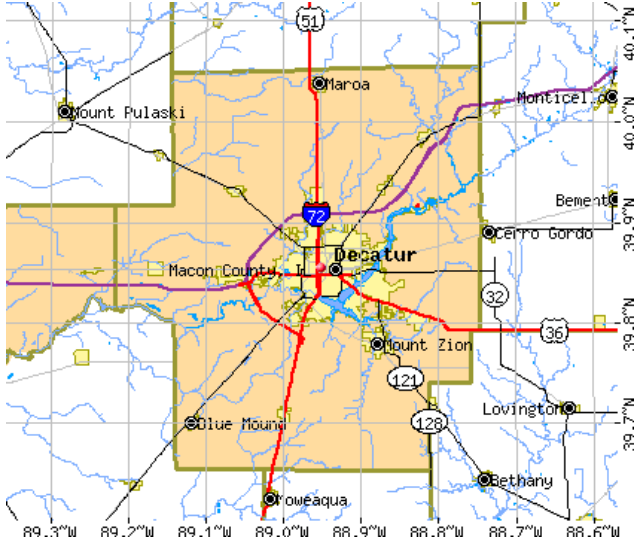
12 <https://www.stmarysdecaturn.com/Hospital-Information/About.aspx>

13 <http://www.dunnco.com/about-us/history.html>

14 <http://www.muellercompany.com/about/company-overview.aspx>

15 <http://www.bodinedecatur.com/default.aspx>

In Macon County, **23.1%** of residents over the age of 25 have a bachelor's degree or higher and enrollment at the local community college approaches 7,600 each year.



- Millikin University is an independent, privately supported four-year university with undergraduate studies in Arts & Sciences, Business, Fine Arts and Professional Studies and graduate studies in Business Administration and Nursing with 2,200 undergraduate and 80 graduate students

environments, opportunities and experiences that enable individuals, communities and region to grow, thrive and prosper.

- Richland Community College provides innovative educational

Transportation Assets

Decatur Macon County is served by a robust transportation system that connects the area to over **95 million people within 500 miles for same day delivery service** to places that include Chicago, Milwaukee, Detroit, Columbus, Atlanta, Nashville, Memphis, Wichita, Omaha and Minneapolis.

Highway Connections

Interstate 72 connects the region east west and is conveniently located between **Interstate 55** to the West and **Interstate 57** to the East. **U.S. Route 36** provides an alternative East bound connection and **Illinois Route 121** connects the area Northwest to Southeast. **U.S. Route 51** is a major North-South connection, which to the north connects seamlessly into **Interstate 39** at Bloomington, Illinois.



Class I Railroad Service Options

Shortline Support



Class I RR within 40 Miles of Decatur



Air



Service

The Decatur Airport has an 8,400 foot lighted runway with private aircraft storage and maintenance conveniently available. There is a customs office. The facility is located in a designated foreign trade zone.



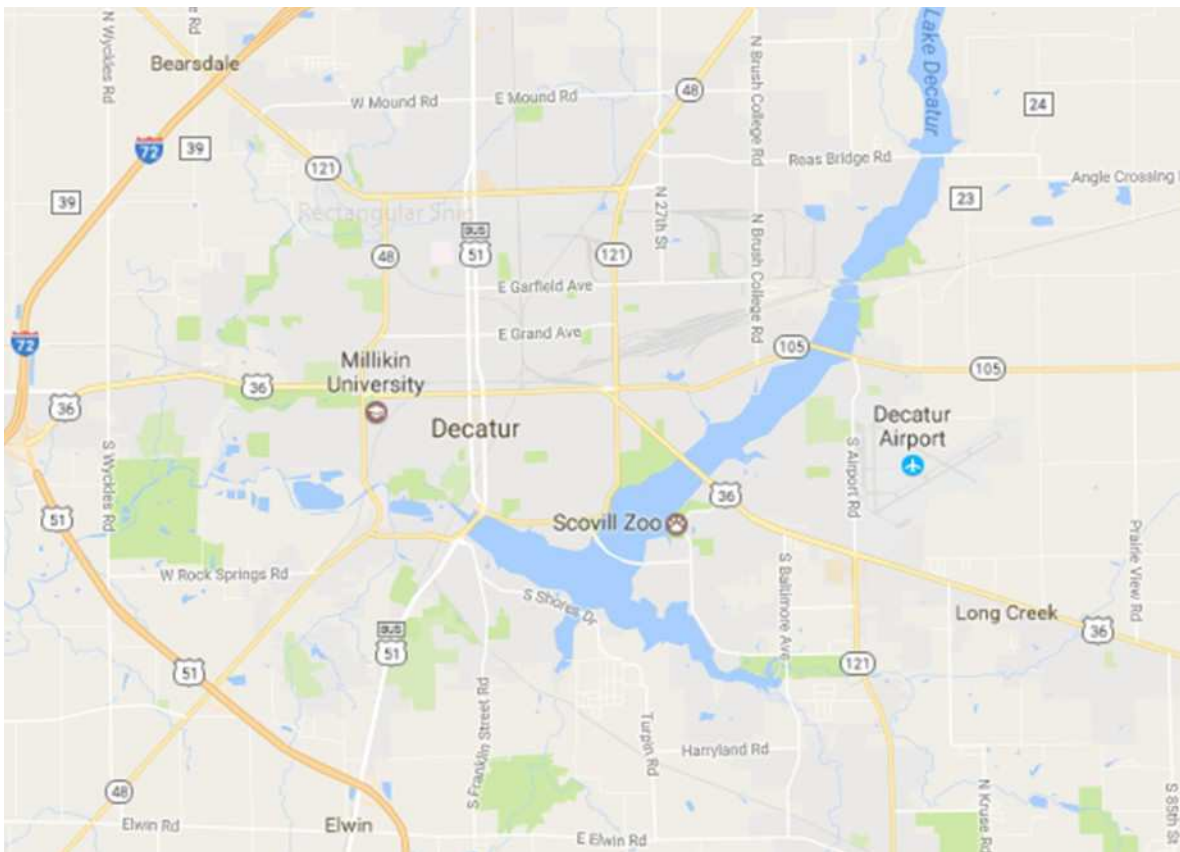
Priority Transportation Projects and Initiatives

**Northeast Connector
East Beltway
6.8 miles of 22.5 Beltway miles
FASTLANE 2 Application**

**Brush College Road – Faries Parkway
Grade Separation & Interchange
Brush College Road
One Segment of a 4 Segment Corridor Project
TIGER VIII Application 2016
Upcoming TIGER IX Application 2017**

**Midwest Inland Port
Intermodal Hub
Expandable Domestic and International Flexibility**

Connecting the Midwest to the East, West and Gulf Coasts



Project Overview

- Construction of the Route 48 Connector for the Beltway, which ties the Beltway into Interstate 72. (Segment 11)
- Construct 6.2 miles of the East Beltway to connect Route 48 to Route 105/Williams Street including reconstruction of Reas Bridge. (Segment 10)
- Construct the intersection of the Beltway at Route 105/Williams Street. (Segment 9)

Project Benefits

- Improves connectivity to the eastern portion of the metropolitan area supporting existing businesses and new economic development opportunities.
- Enhances freight mobility and reliability through region and mitigates congestion.
- Increases service reliability and schedule certainty for Decatur Public Transportation System.
- Improves safety of the region's transportation system for all users by segregating heavy truck traffic away from residential and commercial areas.
- Provides fewer grade crossing conflicts for heavy trucks.

Estimated Project Costs

\$140 million

Project Updates

1. Route 48 Connector ready to let 2017
2. Reas Bridge design engineering underway and will be ready begin land acquisition in 2017 and letting for construction whenever funding identified
3. Property required for Right of Way for the first 4 segments has been identified
4. Added to the functional classification of federal routes as a principal arterial and approved by the FHWA Illinois Division office. Once the project has funding available or approval the IDOT intends to submit a request to FHWA for NHS designation.
5. Public Private Partnership opportunities are being discussed with Decatur area businesses
6. County maximized transportation levy with \$400,000 annual increase dedicated to the project.





Corridor Segments (south to north)

- Widen Brush College Road between William Street and Faries Parkway
- Replace current functionally obsolete underpass at NS Rail Yard with Overpass
- **Grade Separate NS Crossing at Faries Parkway**
- Brush College Road Grade Separation at Brenaman Road (projected 48 blockages per week and 19 hours of delay)

Project Overview

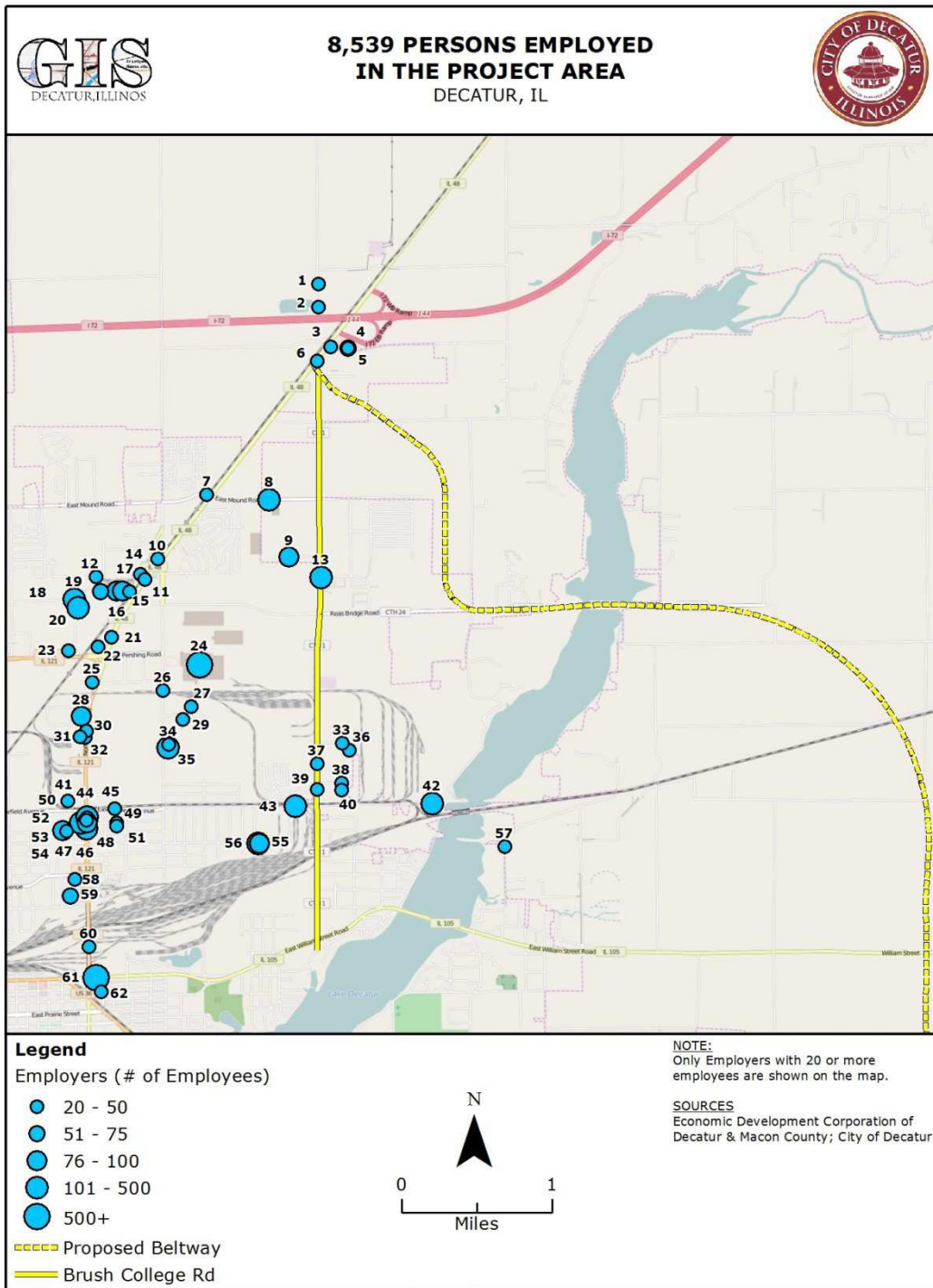
- Grade separation/overpass will carry Brush College Road over the Norfolk Southern Railroad track and Faries Parkway
- Construction of an interchange ramp connecting Brush College Road and Faries Parkway.

Project Benefits

- Grade separation/overpass will relieve blocking and delays of the crossing at Faries Parkway. Per the *Decatur Area Transportation Efficiency Study*, trains block the crossing at Faries Parkway 17.2 hours per week. **The blockage time is more than that of any other crossing in Decatur.**
- Eliminate 2 grade crossings.
- Improve schedule reliability for Decatur Public Transportation System bus routes, increasing community access to jobs and education opportunities at Richland Community College. There are 4,352 jobs within 1 mile of the 3.8 mile long Brush College Road Corridor.
- Increase safety and access for emergency vehicles accessing industrial areas and businesses and promote industrial development along the Brush College Road corridor.
- Increase safety of the regional transportation system by eliminating a high crash grade crossing (52 crashes between 2011-2015).

Estimated Project Costs: \$37.5 million

Businesses and Employment Benefitting from East Beltway Construction and Brush College Corridor Improvements





MIDWEST INLAND PORT

DECATUR AND MACON COUNTY, ILLINOIS

Benefits¹⁶

- Strategically located, this logistics complex offers **non-congested**, toll-free access to one of the country's heaviest trucking and railway traffic flows
- Direct access to **3 Class 1 Railroads** connecting to all North American rail networks
- A quick channel to coastal and export markets (Fastest route from China to the Midwest!)
- An abundance of competitively priced labor and an available workforce
- An airport equipped with a U.S. Customs Office, a Fixed-Based Operator (FBO) and runways measuring 8,400' long and 150' wide to handle large aircrafts. Daily passenger service provided to St. Louis and Chicago. One of only 86 airports with gateway status (DASSP) to Ronald Reagan Washington National Airport
- A diverse community of importers and exporters in the area creates opportunities for **intermodal container match-back shipments**
- Environmentally respectful and **privately owned intermodal yard**
- Railserve LEAF Gen-Set locomotives, which reduce Nitrogen Oxide emissions by 84% compared to conventional locomotives and operate using 45-60% less fuel
- Third Party Logistics providers offering freight forwarding, transloading, warehousing, stock management, temperature-controlled storage and more
- Possible **reduced supply chain logistics costs**.

In the News . . .

CN Joins Midwest Inland Port Strategic Development Coalition!

¹⁶ <http://www.midwestinlandport.com/overview/>

The Midwest Inland Port was recently named one of the top 10 intermodal sites to watch by AreaDevelopment.com