

## Appendix 1. Proposed Action Maps-Chapter Nine

The maps included in this appendix are maps associated with the proposed action for the Lolo National Forest Land Management Plan, Saint Regis River Geographic Area.

Forest wide maps are displayed first, followed by the geographic areas. Each set of geographic area maps includes a land ownership map. This map displays topographic features, roads, and other reference points that are not displayed on the rest of the maps.

See Grizzly and Lynx appendices for grizzly bear management units and lynx analysis unit maps.

Map Name	Map Number
<b>Chapter Nine: Saint Regis River (GA) Maps</b>	
Land Ownership and Management Areas	<a href="#">SR-01</a>
Conservation Watershed Network, Watershed Condition Framework and Municipal Watersheds	<a href="#">SR-02</a>
Designated and Emphasis Areas (Inventoried Roadless Areas, Research Natural Areas, Special Areas, Wild Scenic Rivers, National Trails, National Recreation Areas, Scenic Byway, Ski Areas, Seeley Lake Wildlife Refuge, Chain of Lakes Recreation Area, and Acquired Lands)	<a href="#">SR-03</a>
Desired Summer Recreation Opportunity Spectrum	<a href="#">SR-04</a>
Desired Winter Recreation Opportunity Spectrum	<a href="#">SR-05</a>
Desired Scenic Integrity Objectives	<a href="#">SR-06</a>
Lands Suitable for Timber Production and Where Harvest Could Occur	<a href="#">SR-07</a>

**Data Disclaimer:** The USDA Forest Service makes no warranty, expressed or implied, including the warranties of merchantability and fitness for a particular purpose, nor assumes any legal liability or responsibility for the accuracy, reliability, completeness, or utility of these geospatial data, or for the improper or incorrect use of these geospatial data. These geospatial data and related maps or graphics are not legal documents and are not intended to be used as such. The data and maps may not be used to determine title, ownership, legal descriptions or boundaries, legal jurisdiction, or restrictions that may be in place on either public or private land. Natural hazards may or may not be depicted on the data and maps, and land users should exercise due caution. The data are dynamic and may change over time. The user is responsible to verify the limitations of the geospatial data and to use the data accordingly.

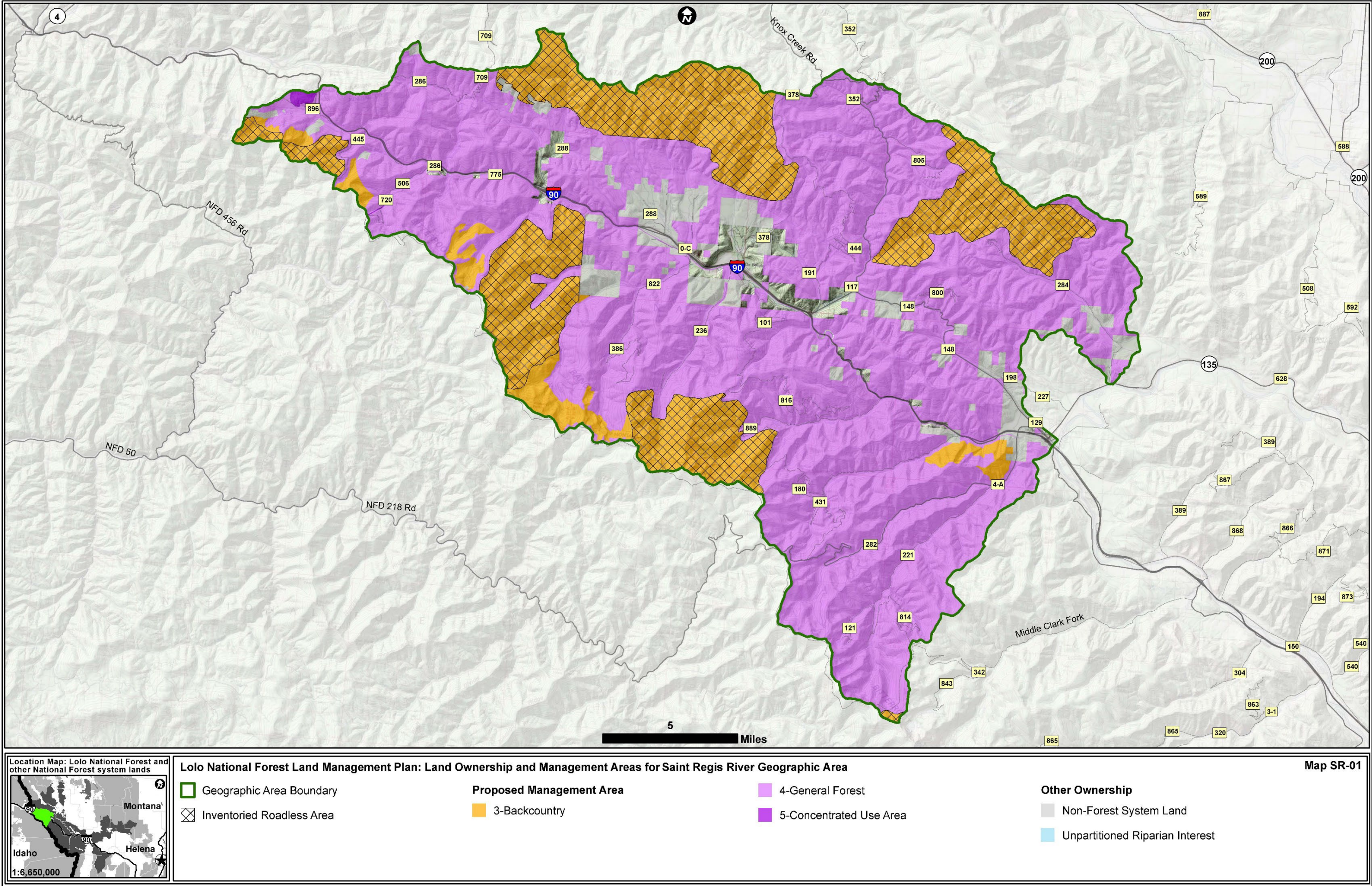
**Map Disclaimer:** This map is intended to depict physical features as they generally appear on the ground and may not be used to determine title, ownership, legal boundaries, legal jurisdiction, including jurisdiction over roads or trails, or access restrictions that may be in place on either public or private land. Obtain permission before entering private lands and check with appropriate government offices for restrictions that may apply to public lands. Lands, roads, and trails within the boundaries of the National Forest may be subject to restrictions on motor vehicle use. Obtain a Motor Vehicle Use Map or inquire at the local Forest Service Office for motor vehicle access information. Natural hazards may or may not be depicted on the map, and land users should exercise due caution. This map may not be suitable for navigation.

As of the publication of the proposed action, there is a known error in the National Forest System geospatial layer that excludes approximately 6,000 acres of recently acquired lands northwest of Missoula on the south side of I-90. This error will be corrected as soon as updated data is available.

**Map package completed:** February 6, 2024

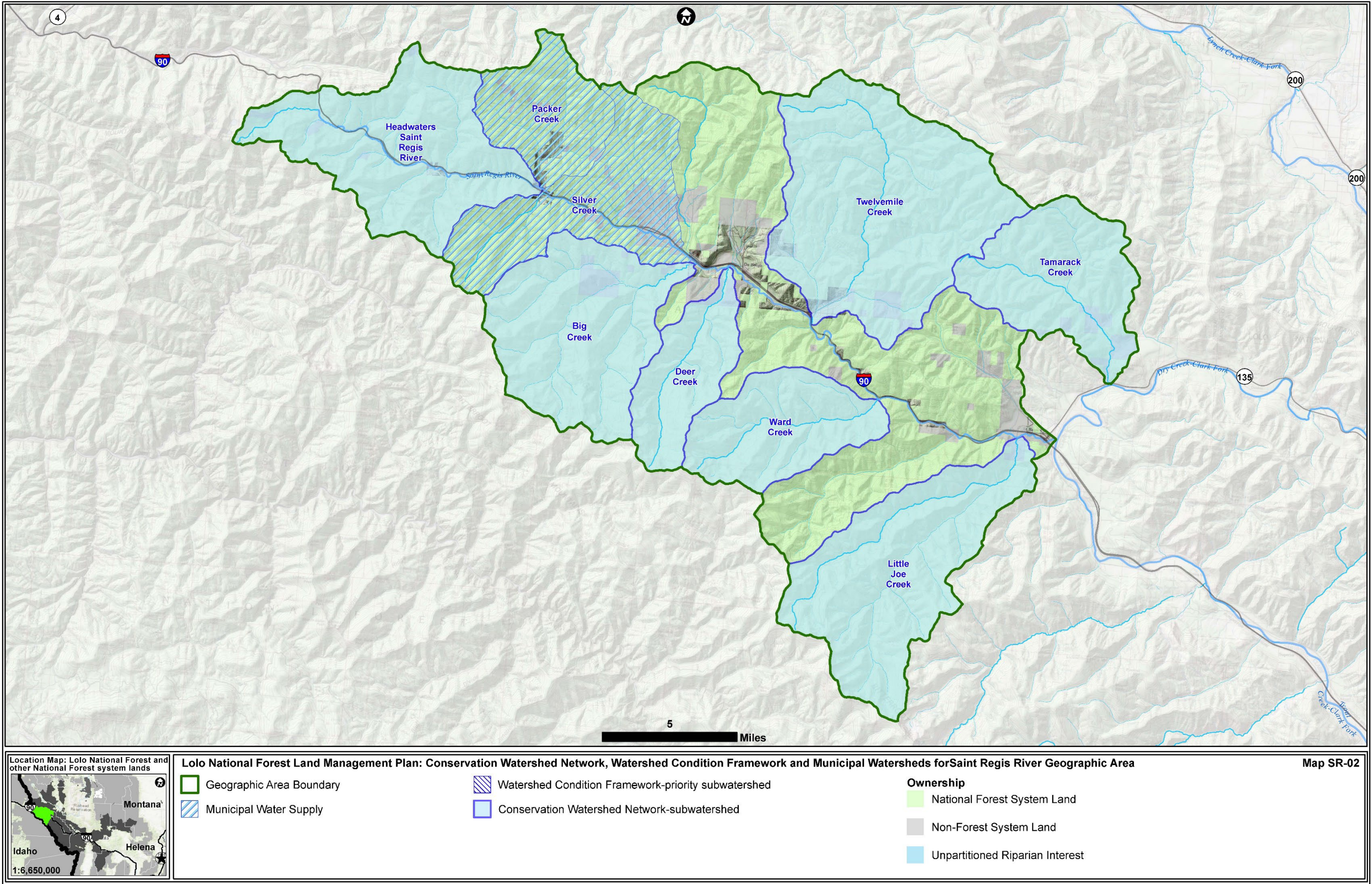


Map SR-01: Saint Regis Land Ownership and Management Areas ([back to map list](#))



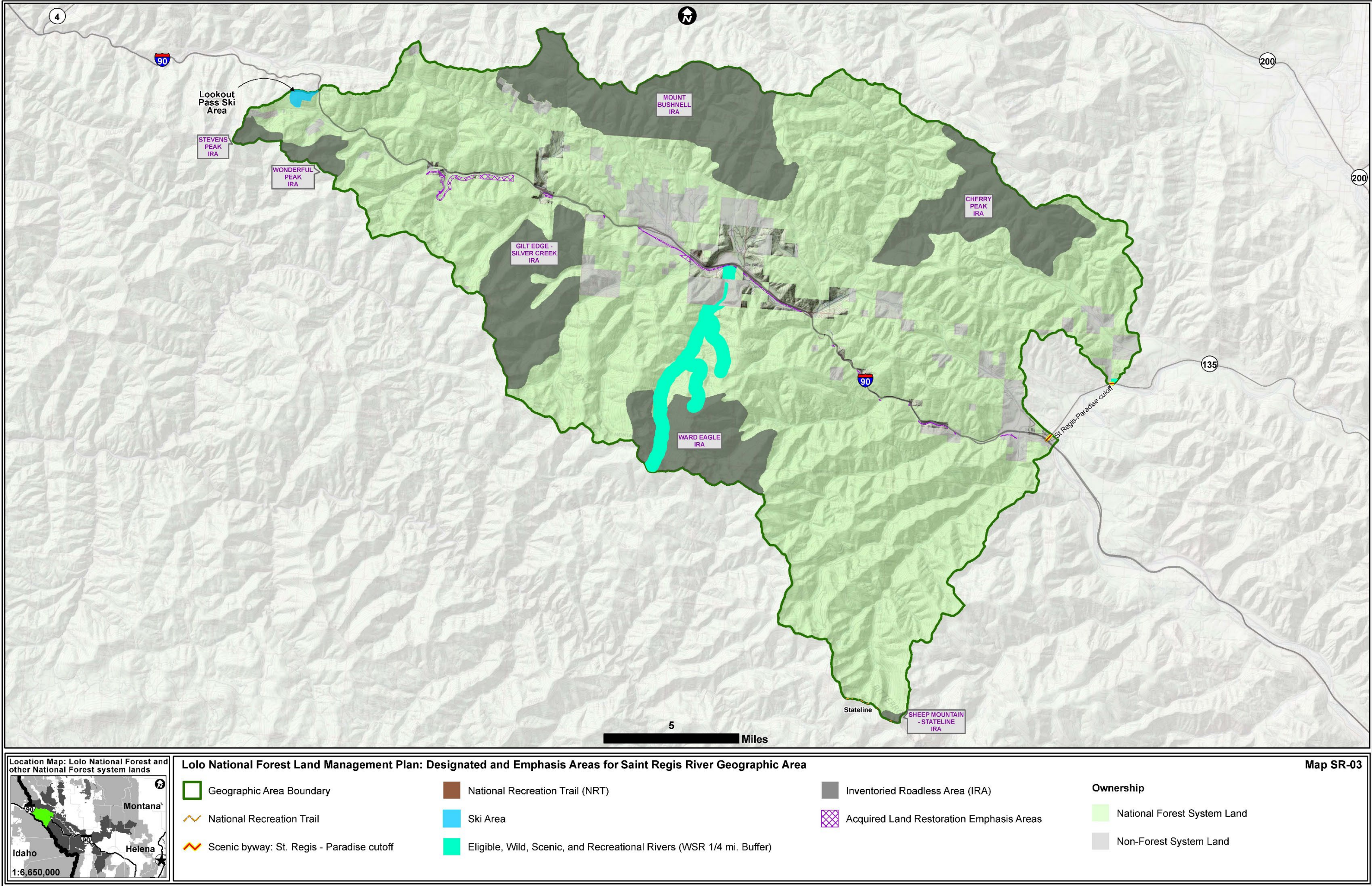


Map SR-02: Saint Regis Conservation Watershed Network, Watershed Condition Framework and Municipal Watersheds (back to map list)



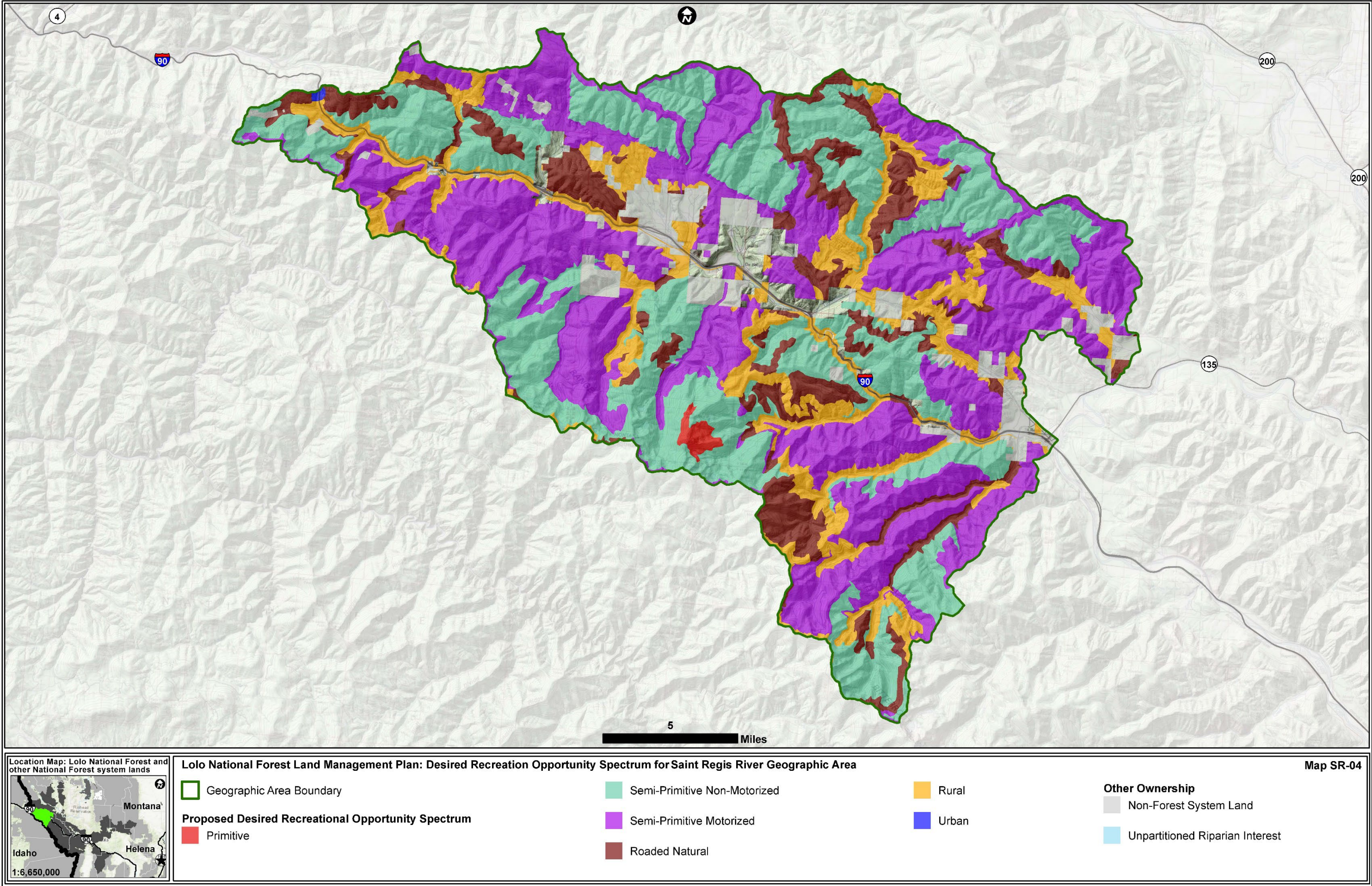


Map SR-03: Saint Regis Designated and Emphasis Areas ([back to map list](#))



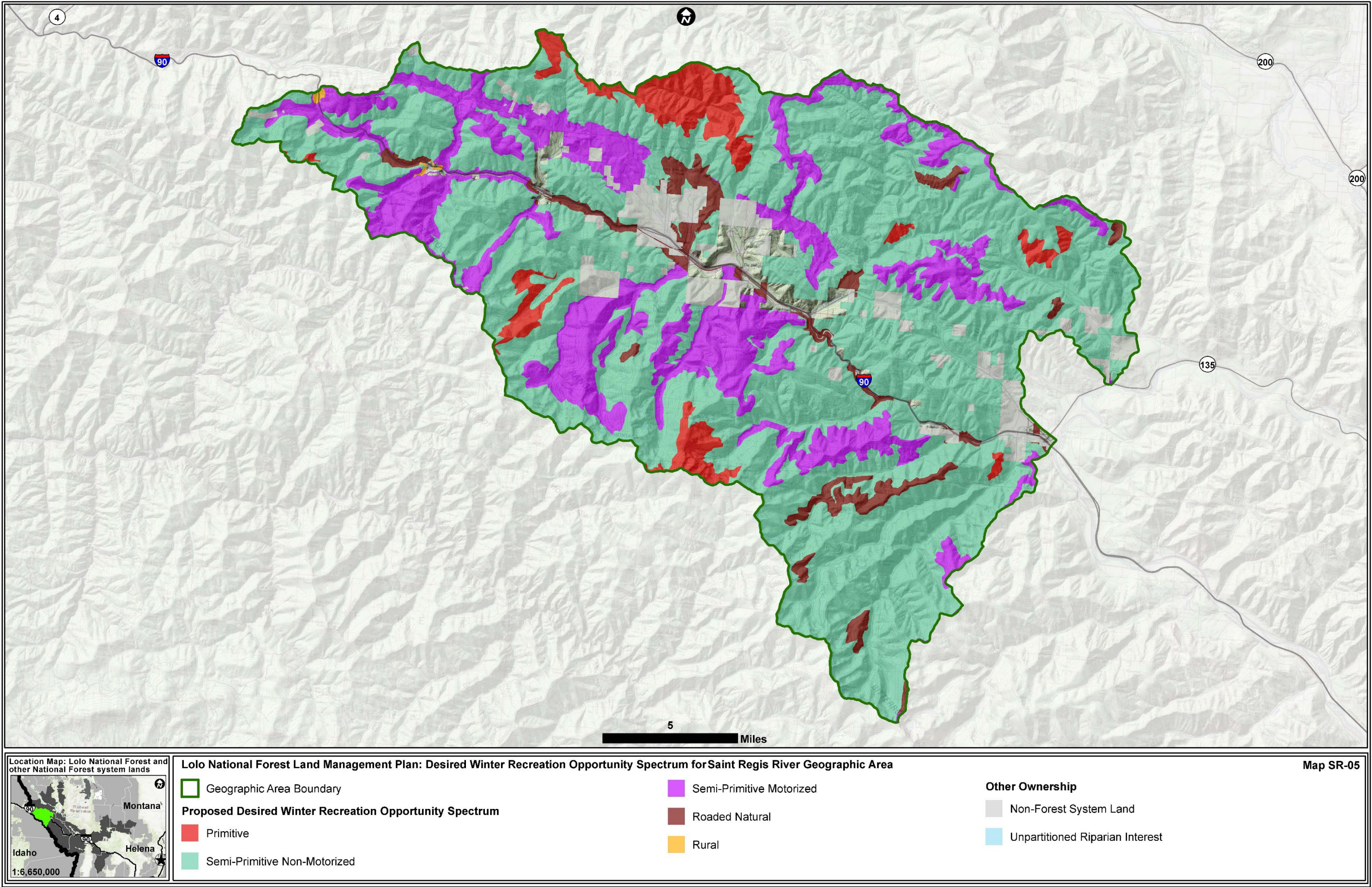


Map SR-04: Saint Regis Desired Summer Recreation Opportunity Spectrum ([back to map list](#))

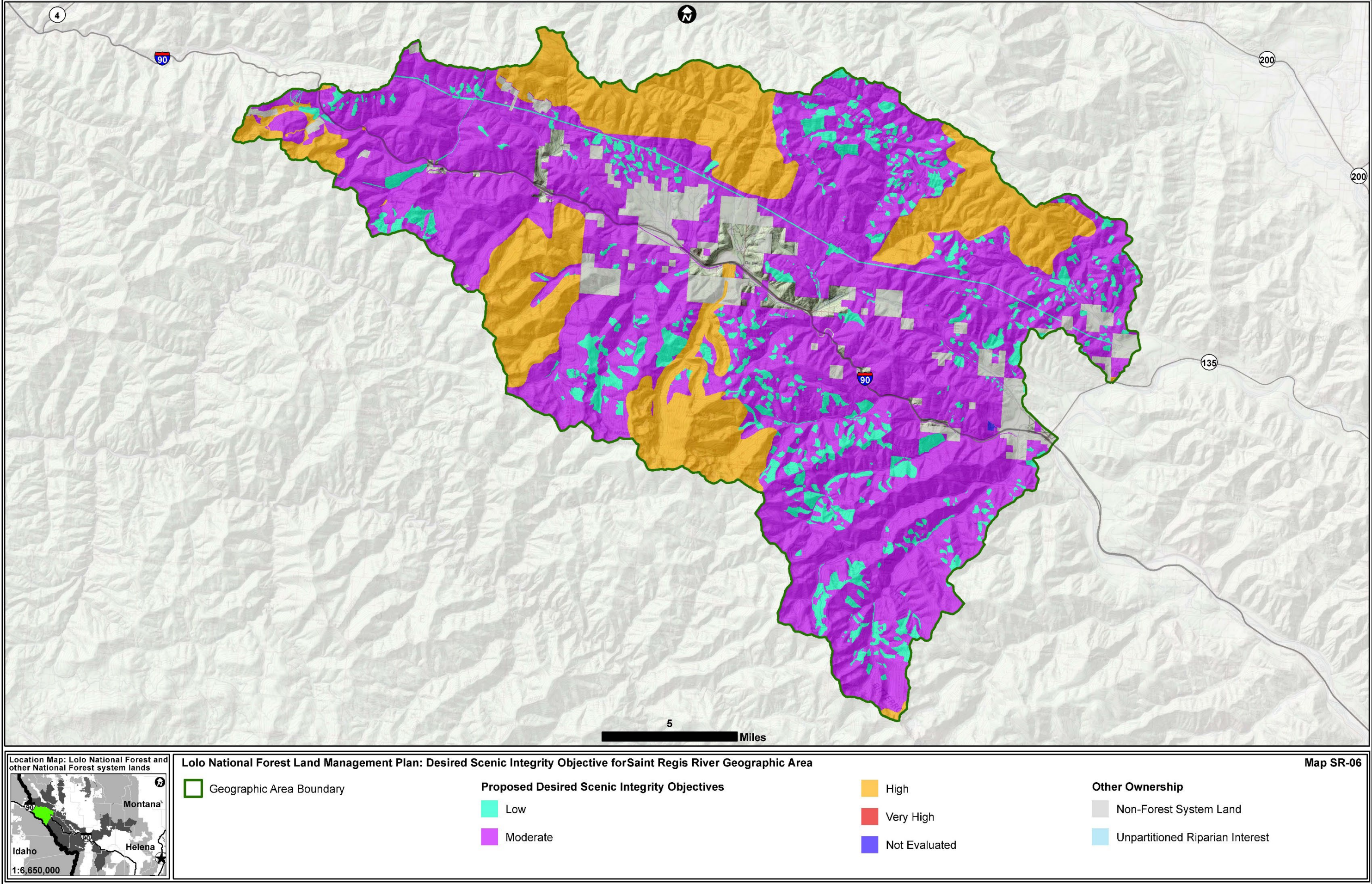




Map SR-05: Saint Regis Desired Winter Recreation Opportunity Spectrum ([back to map list](#))









Map SR-07: Saint Regis Lands Suitable for Timber Production and Where Harvest Could Occur ([back to map list](#))

