

40 Kw SOLAR
ARRAY ON TOP
OF BUILDING B

EV CHARGING
PARA & FIXED

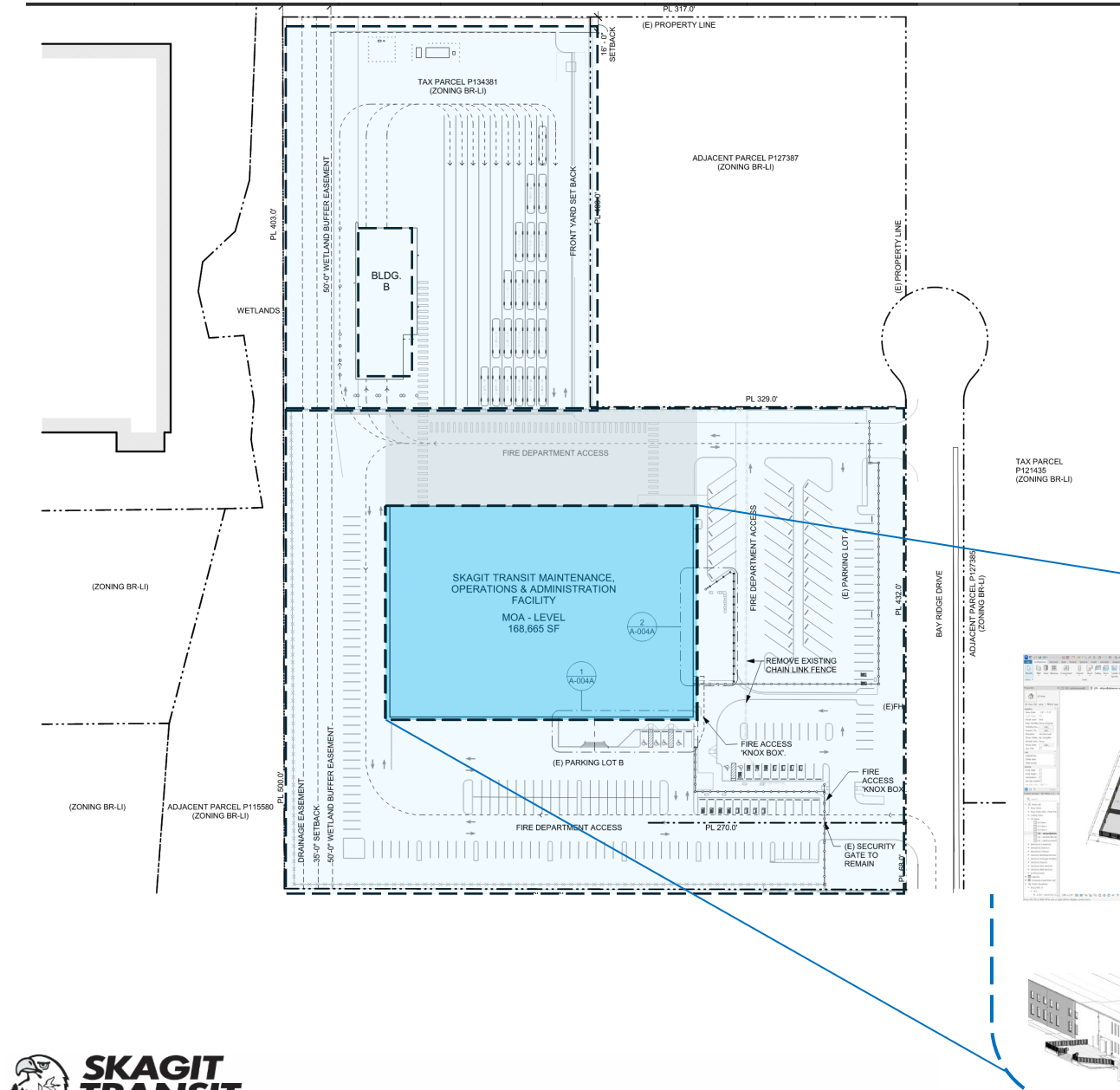
POTENTIAL LAND EXPANSION
FOR FUTURE ZERO EMISSIONS
ENERGY PRODUCTION
MICRO-GRID / BATTERIES &
HYDROGEN FUELING

EV CHARGING
ADA EMPLOYEES

EV CHARGING
PARA TRANSIT

EV CHARGING
EMPLOYEES

EV CHARGING
PUBLIC SPACES

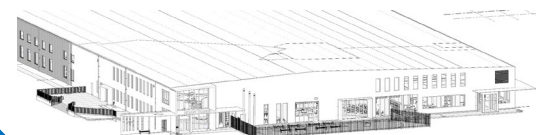


90% DESIGN PERMIT SUBMITTED AUGUST 2024

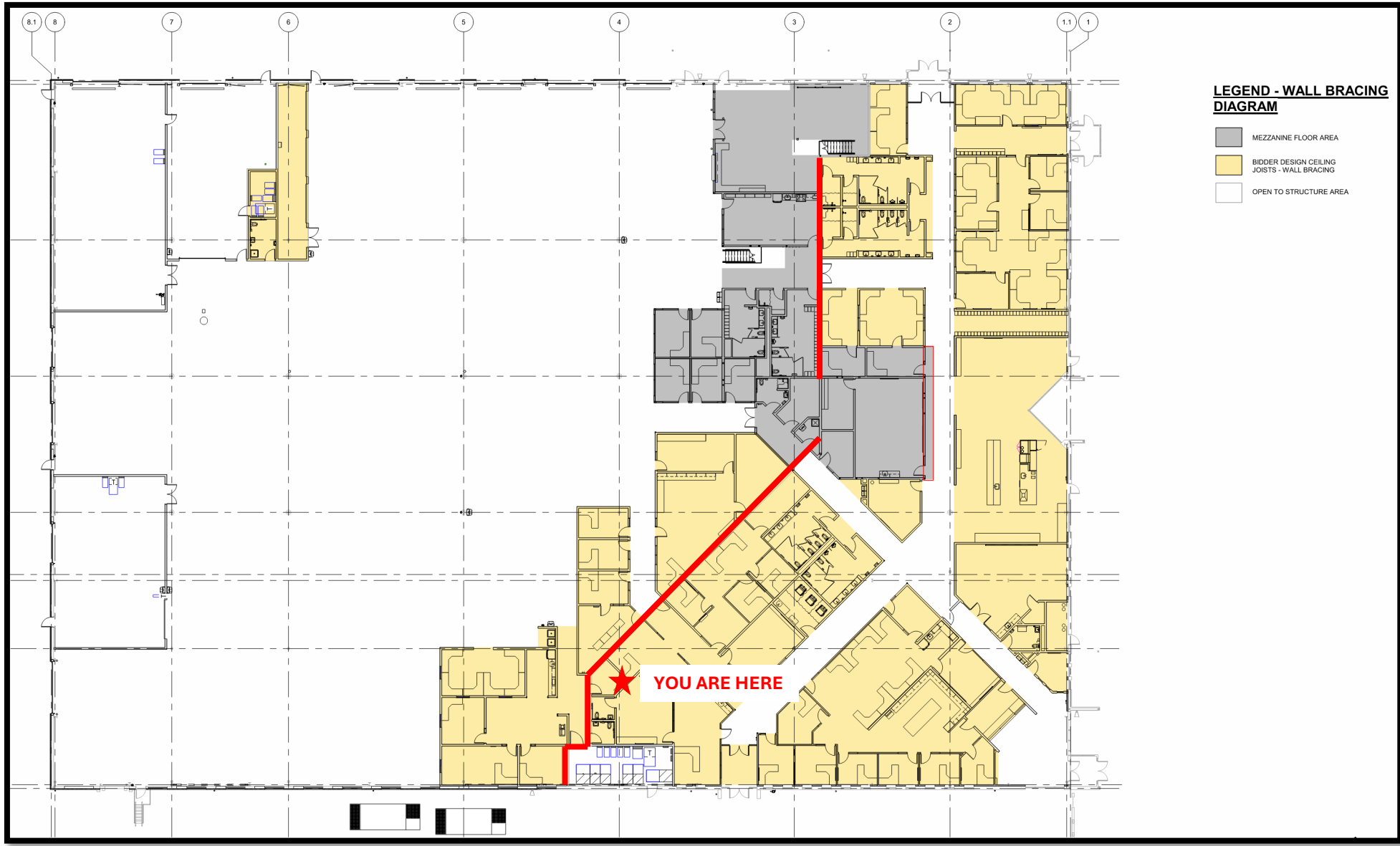
(\$14.6 M CONSTRUCTION) (90% Estimate)

- **NEW OFFICES (3000amp Service) (Critical Utilities)**

-



MOA2 PHASE 1 – COMPLETE



MOA2 PHASE 3

90% DESIGN PERMIT SUBMITTED AUGUST 2024

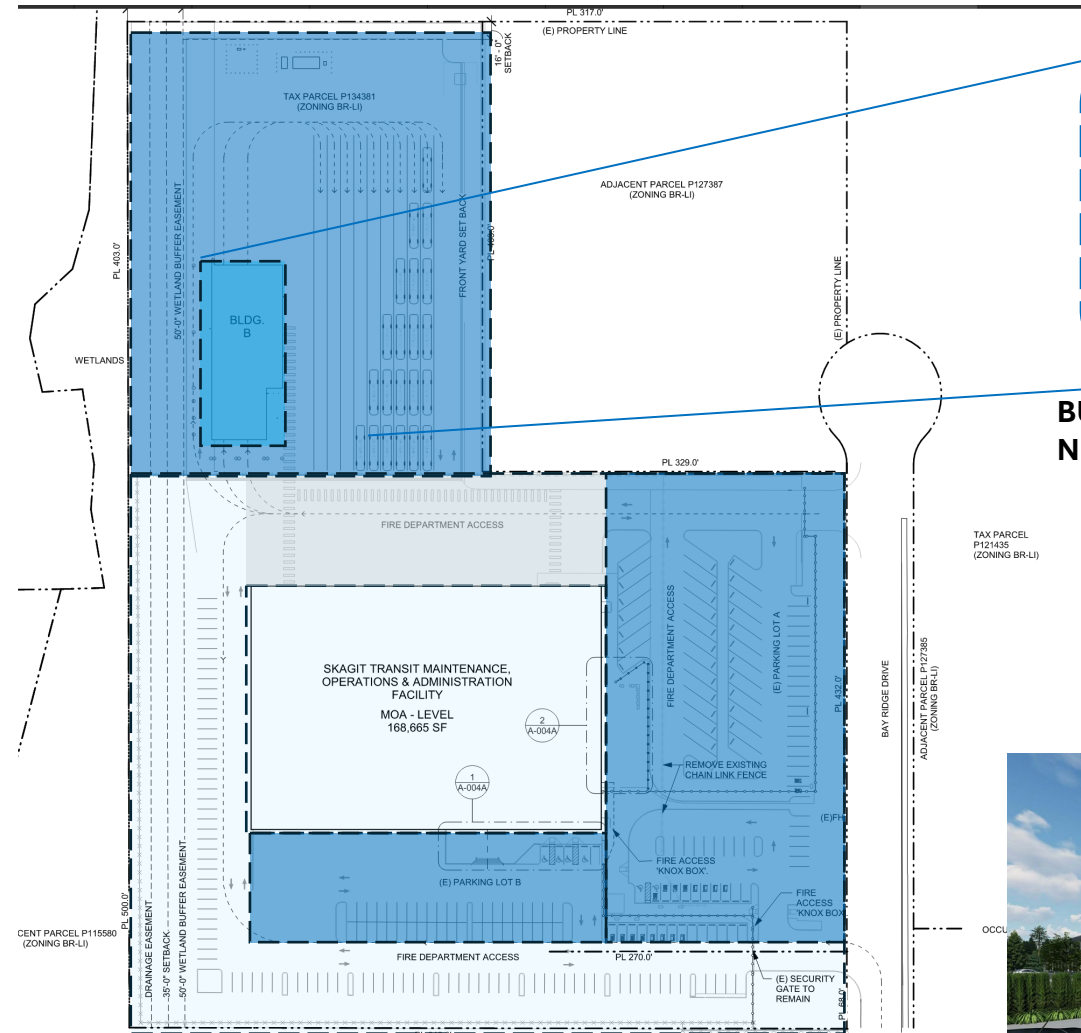
PHASE 3 SCOPE INCLUDES:

(\$16.4M CONSTRUCTION) (90% Estimate)

BUILDING B / FUELING STATIONS / EV CHARGING

NORTH PARCEL & BUILDING FULL SITE DEVELOPMENT

- PARKING AREA PAVING / STRIPING / FENCING
 - STAFF - EV CHARGING - ADA
 - PUBLIC - EV - ADA
 - PARA TRANSIT - EV
 - BUS - EV / FC
- UTILITIES
 - STORMWATER
 - ELECTRICAL
 - 40kW SOLAR ARRAY
 - LIGHTING / COMMS
 - LANDSCAPING
 - 4000amp ELECTRICAL TRANSFORMER
- BUS WASH w/ FUELING STATIONS
 - EQUIPMENT
 - Automated Transit Wash System / Lift
 - HW - High Pressure Wash
 - SAFE / TILL
 - DIESEL / LUBE CENTER
- INFRASTRUCTURE TO SUPPORT ZERO EMISSIONS
 - 2 EV CHARGERS
 - NORTH END OF PROPERTY Tanks
 - PROPANE
 - DIESEL
 - GAS



**BUS WASH w/ FUELING STATIONS AT
NEW NORTH PACEL / BUS PARKING**



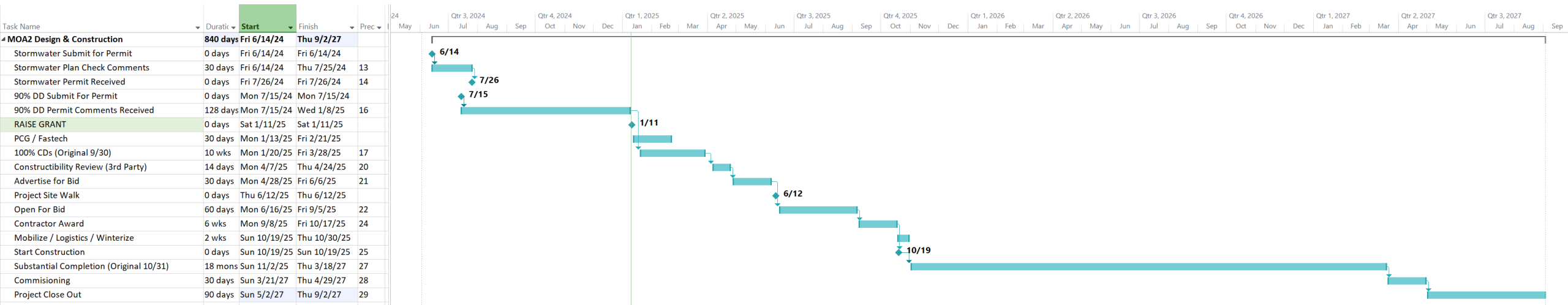
MOA2 PHASE 1 - COMPLETE



**40Kw SOLAR
ARRAY ON TOP
OF BUILDING B**

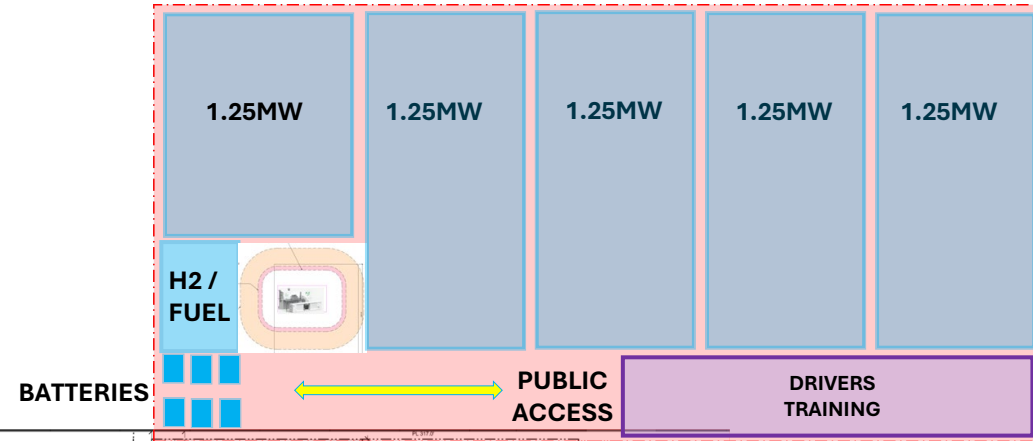
**NORTH LOT
EV CHARGING
PARA & FIXED**

PRELIMINARY SCHEDULE

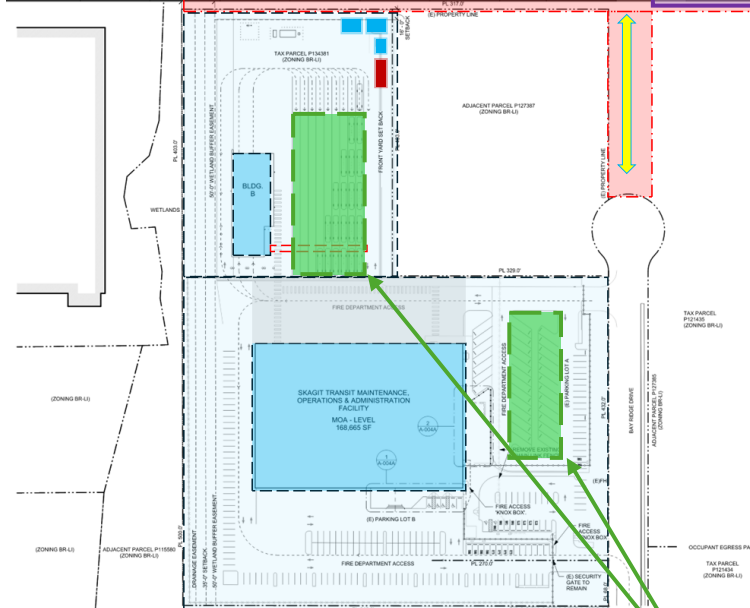


MOA2 PHASE 5 SOLAR / H2 FUELING

Land Acquisition
Potential



SINGLE TRACK SOLAR ARRAY PSE – MICROGRID POWER FOR H2 FUELING



MOA2 PHASE 4 SOLAR CANOPY

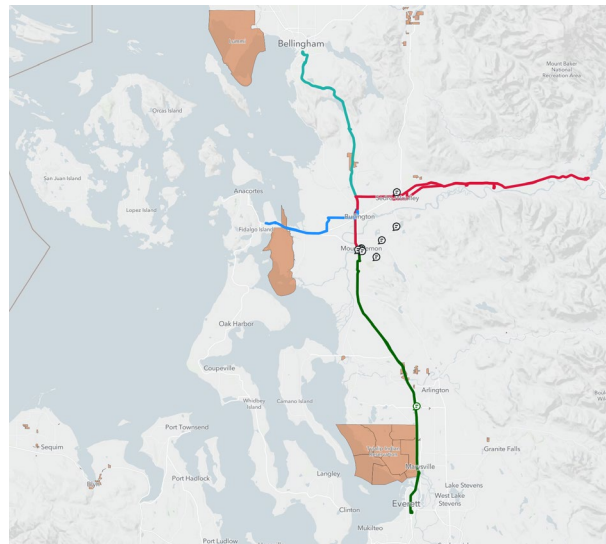


Swinomish Climate Change Initiative Climate Adaptation Action Plan



**Swinomish
Indian
Tribal
Community**

Office of Planning
and Community
Development
La Conner, WA 98257
October 2010



DEP Strategic Planning

A Guiding Strategic Plan to Approach Future Climate Adaptation Actions

OBJECTIVE		ACTIVITY	CLIMATE CHANGE IMPACT	ACTION
1	ENVIRONMENTAL EDUCATION Outreach to Community, visibility/ communications; inter- departmental collaborations	DEP EE program (wildfire info, PME, recycling, waste reduction)	General CC outreach across DEP Sections and projects and general response and outreach for Community regarding climate change	Outreach

8.2 Upland Resources Adaptation Actions

Upland resources consist of forest lands, wildlife habitat, upland wetlands, and upland water resources. These water resources include four small streams and the Swinomish Reservation's groundwater (SITC, 2010). Several private wells and Tribal wells have access to the Reservation groundwater (SITC, 2010). With no true old growth remaining, most of the Reservation uplands is covered with a mix of forest stands, ranging in their age classes and regrowth. The wildland-urban interface, which is the area where houses are within or near forested areas, is located in the southern and western areas of the Reservation (SITC, 2010).

Climate change poses significant impacts to forest species, wildlife, and human development within the uplands. With warmer temperatures and drier conditions, wildfire poses the most significant impact due to the number and density of residences within the wildland-urban interface (SITC, 2010). Almost 30% of the uplands is located within the wildland-urban interface (SITC, 2010). The SITC has focused on reducing or eliminating the amount of combustible sources where possible (SITC, 2010). Heat stress will also affect forest species as warmer temperatures increase the survival of invasive plants and pests. Invasive plants and pests can kill off native plants, resulting in a shift in wildlife foraging conditions. Additional impacts from heat stress include decreases in the wetland and freshwater resources, stream flows, and groundwater recharge (SITC, 2010). The SITC has pursued adaptation strategies such as forest management, wildlife habitat enhancement, and water/stream management.

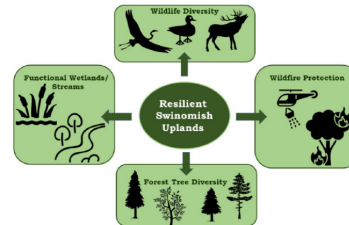
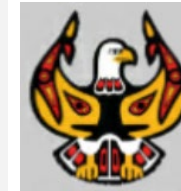


Figure 14. Graphic illustrating four environmental factors that increase the uplands flora and fauna resiliency (Source: WWU Disaster Risk Reduction Studio, 2021).

THE RENEWABLE ENERGY VEHICLE & INFRASTRUCTURE TECHNICIAN TRAINING PROGRAM



LEVERAGE LEARNINGS FROM LCT WORKFORCE DEVELOPMENT LOCALLY, TECHNICAL COLLEGES



PEOPLE OF THE SALMON



PHASE 1

Complete
Architecture – TCF
GC – HBH

Phases 2 - 4
Engineer - KPFF
Architect – Dykman

PHASES 2 & 3

WSDOT
Buses & Bus Facilities
Phase 2
\$9.1M 15% Match
Due 09.12.24
Award June 2025
Access Fall 2025

WSDOT Green Trans
Cap Grant - Phase 3
\$7.9M 15% Match
Due 09.12.24
Award June 2025
Access Fall 2025

RAISE 2025
Phase 2 & 3
\$19.5M 20% Match
Due Date 1.30.25
Access Spring 2025

FTA
Buses & Bus Facilities
Phase 3
\$5M 20% Match
Access Spring 2025

WSDOT Consolidated
Skagit Station Enroute
BEB Induct Charging
\$1.26 Million 10% Match
Due Date TBD
Award Date TBD

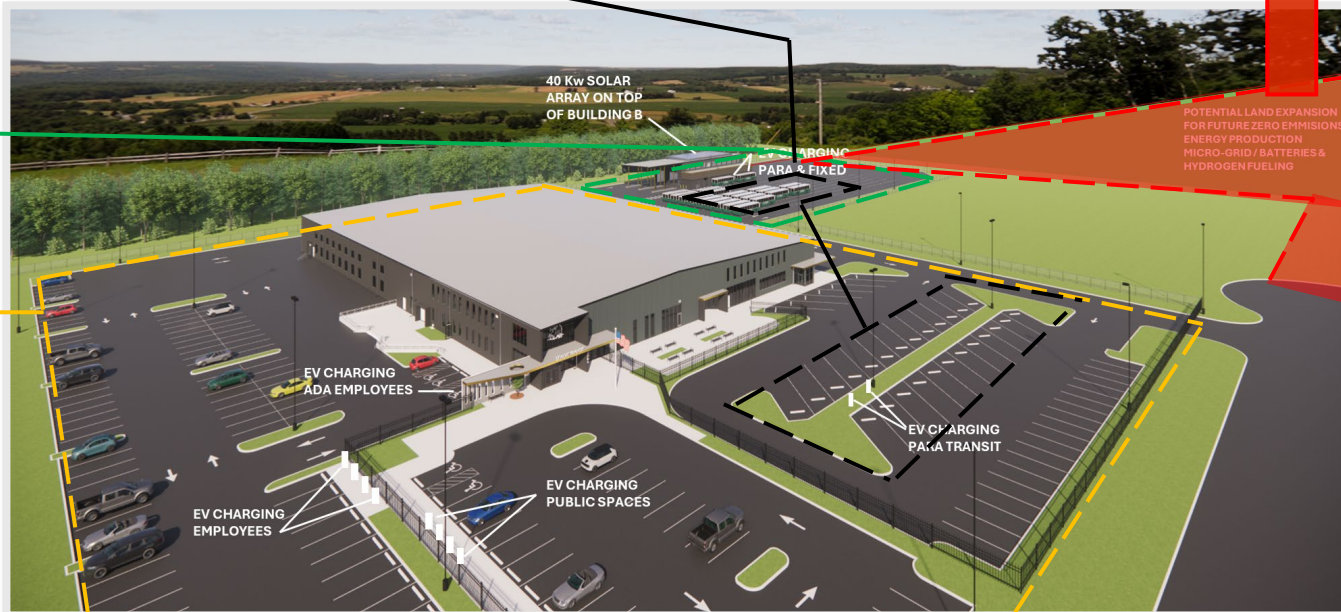
PRIORITY 1 BEB
Charging Canopies
Water Reclamation
Bus Wash
Phase 4
\$8 Million

PHASE 4

PHASE 5

PRIORITY 1 Property H2
Energy Resources
\$7.5M Estimated

PRIORITY 1 Interim H2
Fueling / Storage
Open Partner
\$14.5M Estimated



GRANT SECURED
GRANT PENDING

GRANTS EXPLORING
GRANT PRIORITY

BEB Induct Charging
Training Area
\$1.2M Estimated

Battery Storage
PSE Partner
\$8.5M Estimated

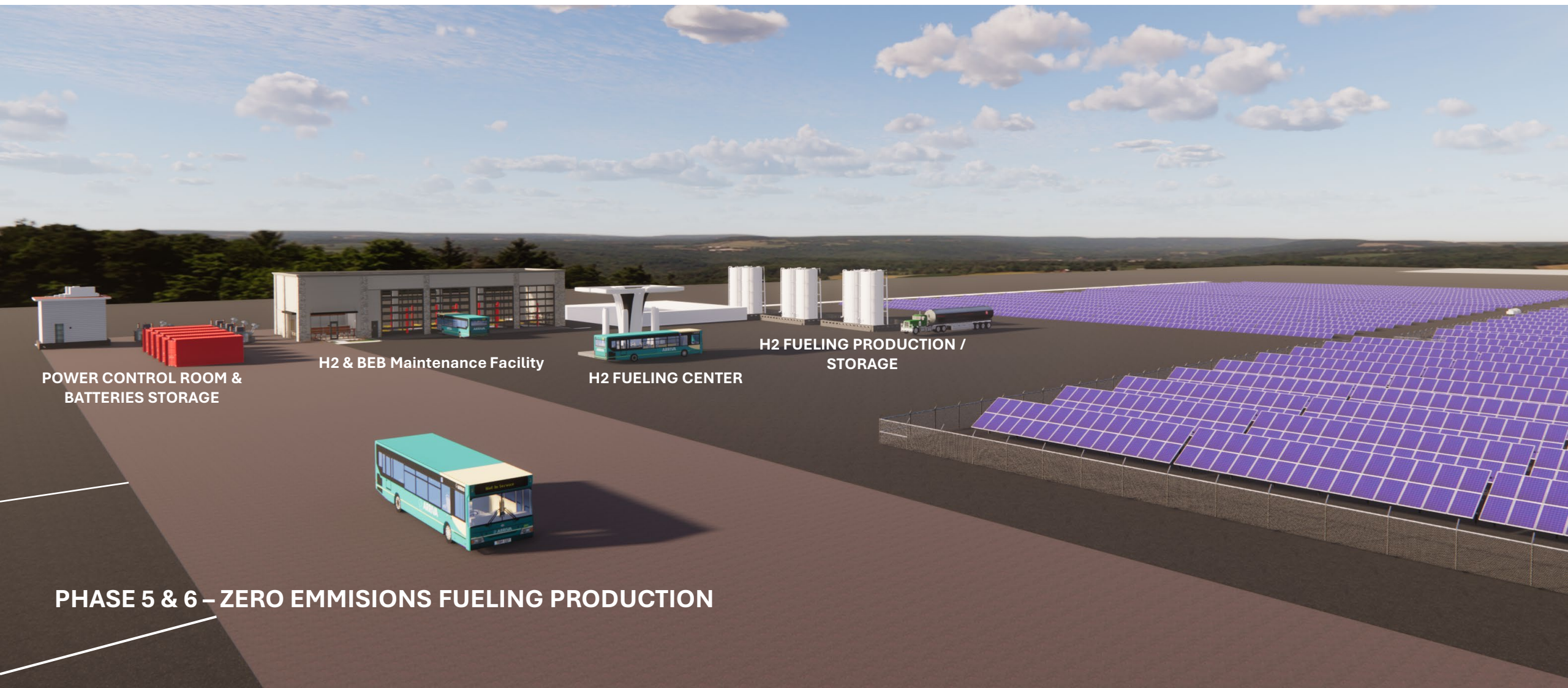
Solar Mico-Grid
PSE Partner /
Alpha Struxure
\$11.5M Estimated

PHASE 6

PHASE 7

H2 Production /
Maintenance FAC
\$22.5 Million

Phases 5 - 7
PDB - Ameresco TBD
WA State Contract



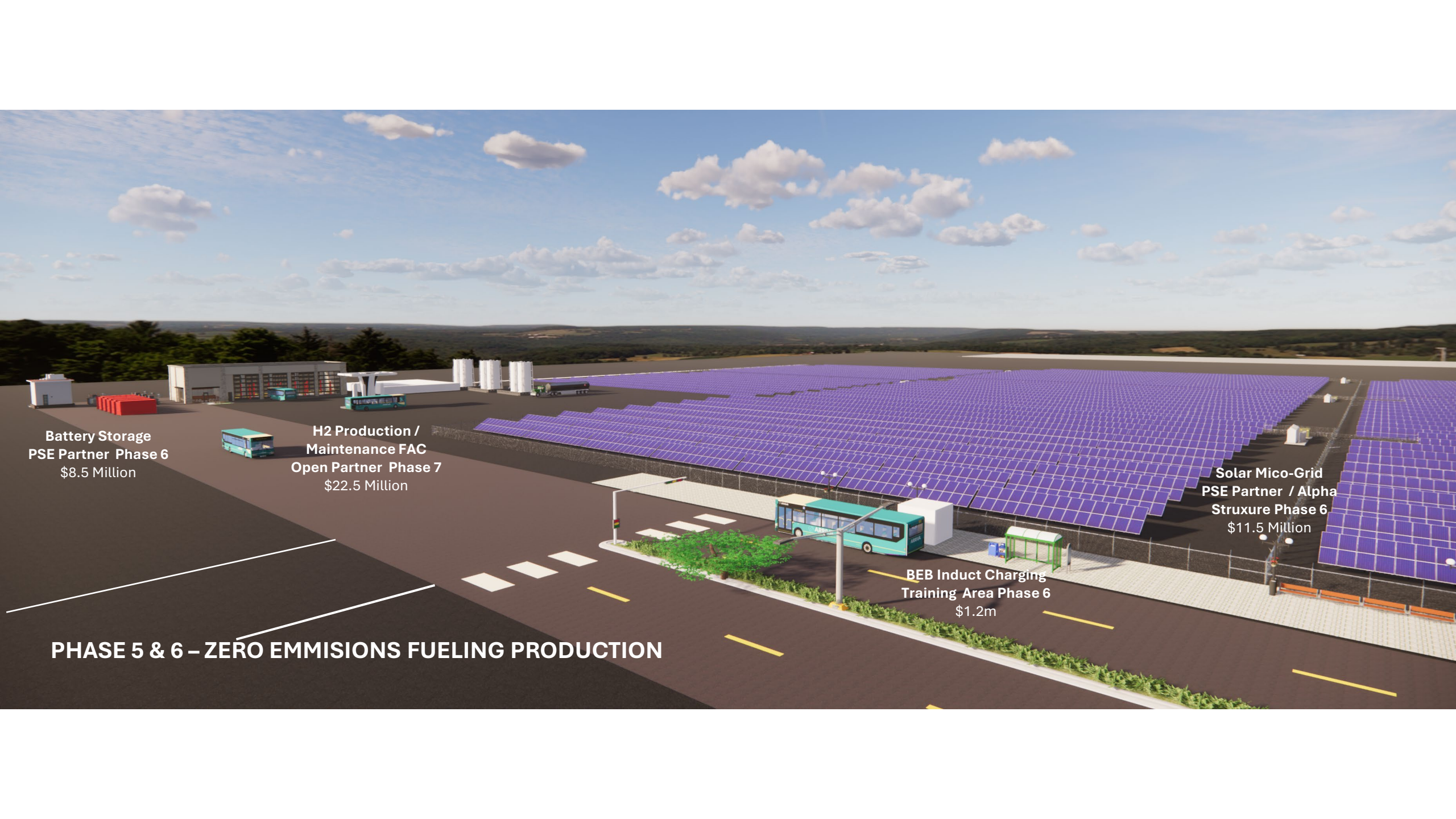
POWER CONTROL ROOM &
BATTERIES STORAGE

H2 & BEB Maintenance Facility

H2 FUELING CENTER

H2 FUELING PRODUCTION /
STORAGE

PHASE 5 & 6 – ZERO EMISSIONS FUELING PRODUCTION



Battery Storage
PSE Partner Phase 6
\$8.5 Million

H2 Production /
Maintenance FAC
Open Partner Phase 7
\$22.5 Million

Solar Micro-Grid
PSE Partner / Alpha
Struxure Phase 6
\$11.5 Million

BEB Induct Charging
Training Area Phase 6
\$1.2m

PHASE 5 & 6 – ZERO EMISSIONS FUELING PRODUCTION



PHASE 5 & 6 – ZERO EMISSIONS FUELING PRODUCTION

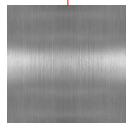








SAFETY / ADA WAYFINDING EXAMPLE DEPARTMENT PALETTES



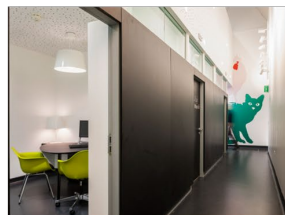
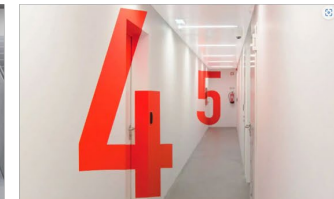
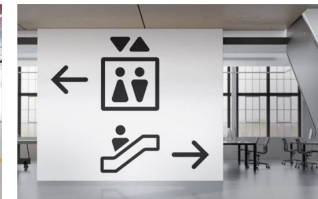
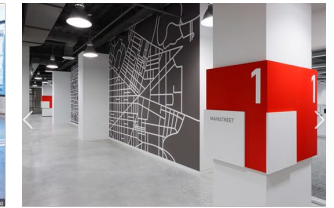
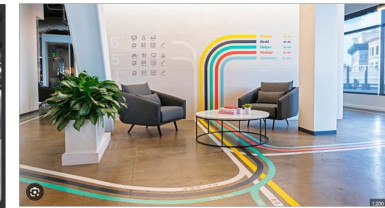
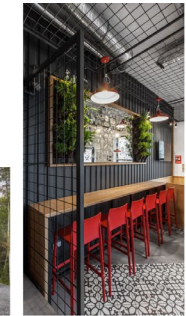
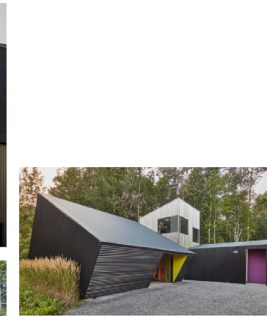
IT



CEO



HR





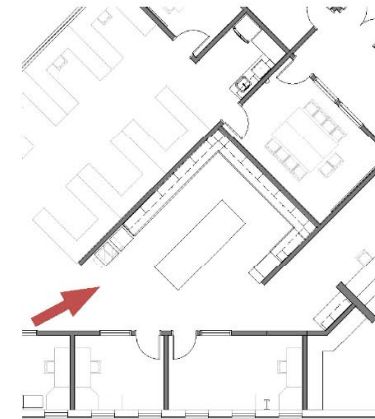
WORK ROOM

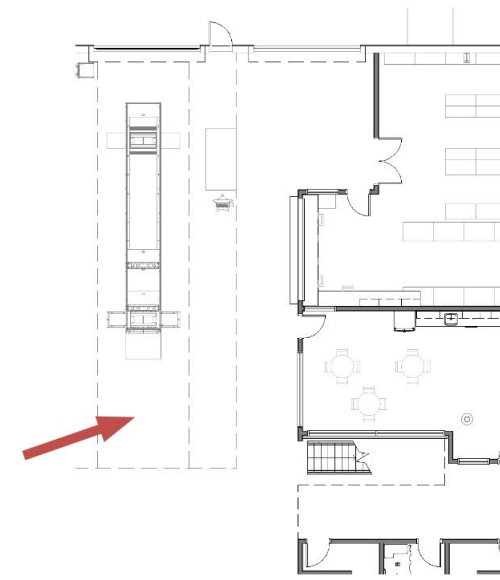
LOOKING NORTHEAST

Functional and efficient providing a variety of spaces for storage needs.

A large island with open shelving for supplies supports many different work activities.

Openness to the reception provides a visual connection.





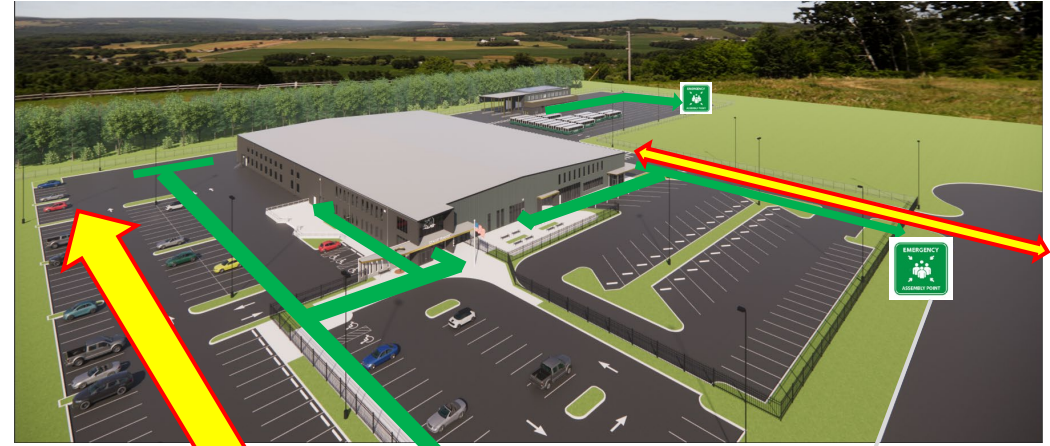
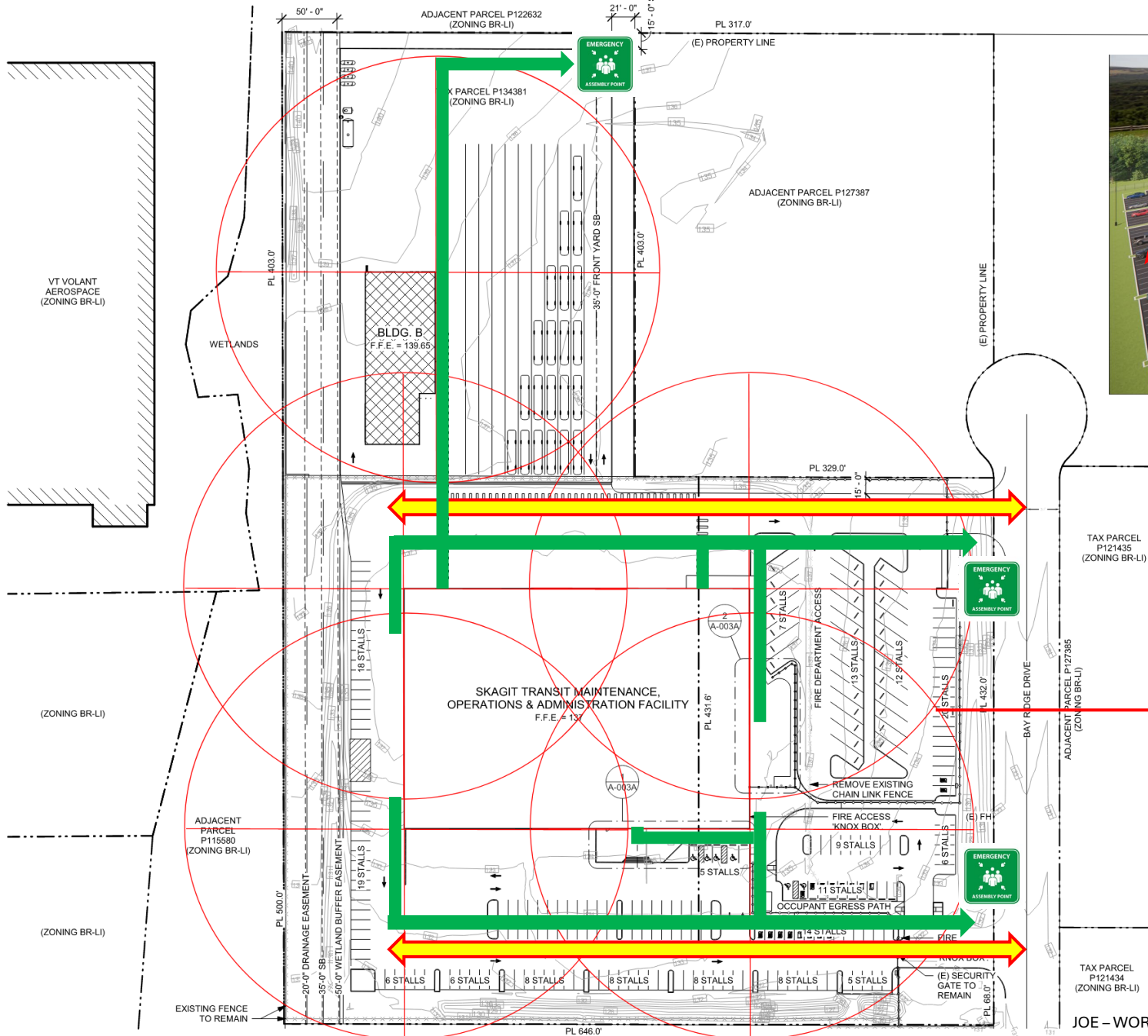
MAINTENANCE BAYS

LOOKING NORTHEAST TOWARD PARTS
OFFICE

The industrial side of the facility.

Sealed concrete floors and corrugated metal walls resist abuse and are easily cleaned.

Bright colors are used to indicate potential safety hazards.



200' R



JOE - WORKING ON CONNECTING HOMELAND & FIRE MARSHALL