

# Project Overview



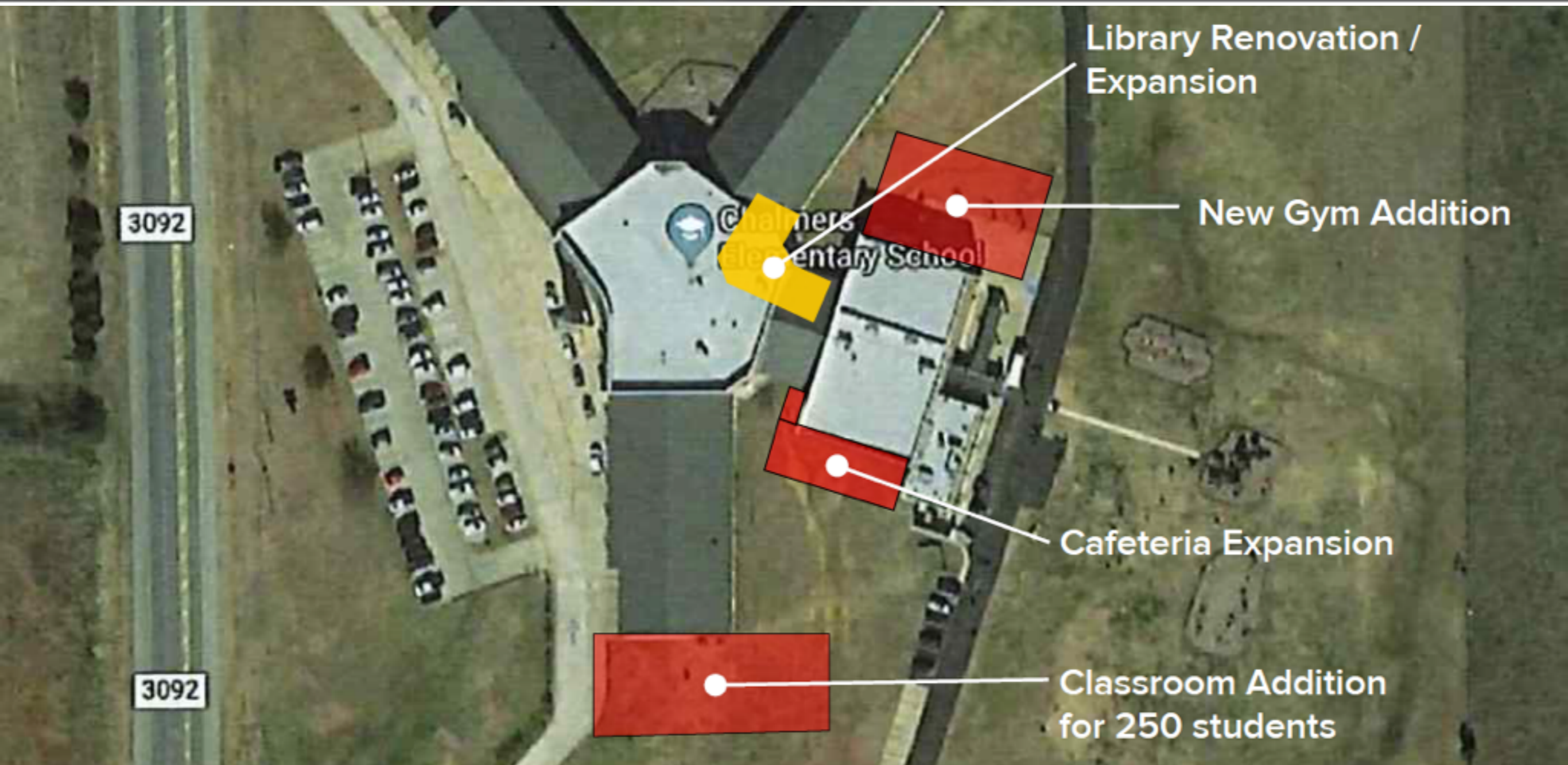
## Chalmers Elementary School

Additions/Renovations include:

- **Expansion to accommodate 257-286 students.**
  - 22,862 sq. ft.
  - Expanded gym, library, cafeteria, parking and instructional space.
- Tornado Shelter (gym)



Conceptual Site Plan for Chalmers



Library Renovation / Expansion

New Gym Addition

Cafeteria Expansion

Classroom Addition for 250 students

3092

3092

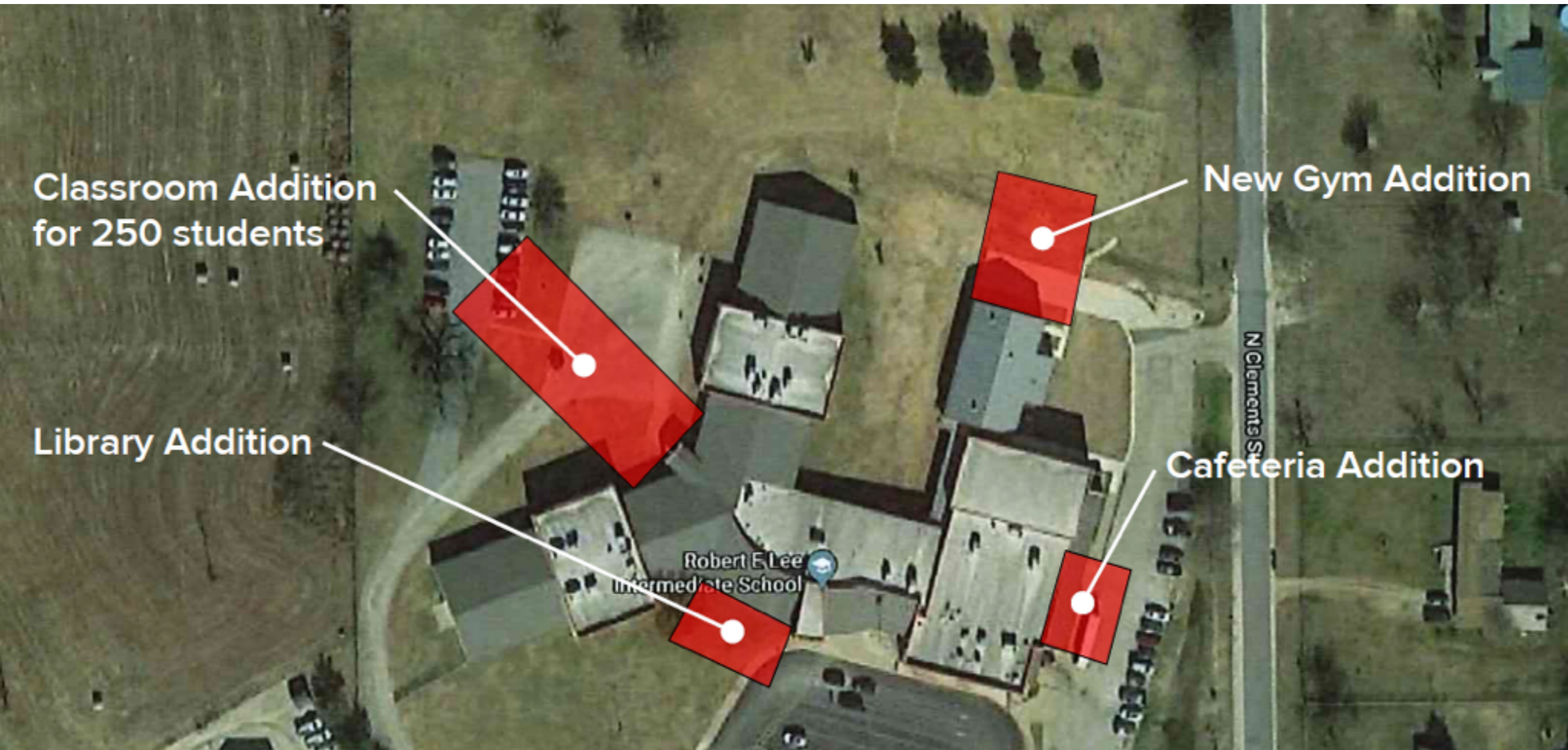


Additions/Renovations include:

- **Expansion to accommodate 257-286 students.**
  - 23,605 sq. ft.
  - Expanded gym, library, cafeteria, parking and instructional space.
- Tornado Shelter (gym)



Conceptual Site Plan for Lee



Classroom Addition  
for 250 students

Library Addition

New Gym Addition

Cafeteria Addition

Robert E Lee  
Intermediate School

N Clements St

**The FSC recommends that the Board of Trustees call for a  
May 2, 2020 Bond Election comprised of the following items:**

**Expansion of Lee Intermediate - \$13,013,400**

**Expansion of Chalmers Elementary - \$12,781,954**

**Capital Improvements - \$9,263,176**

**Total - \$35,058,530**

**Bond Amount - \$35,100,00**