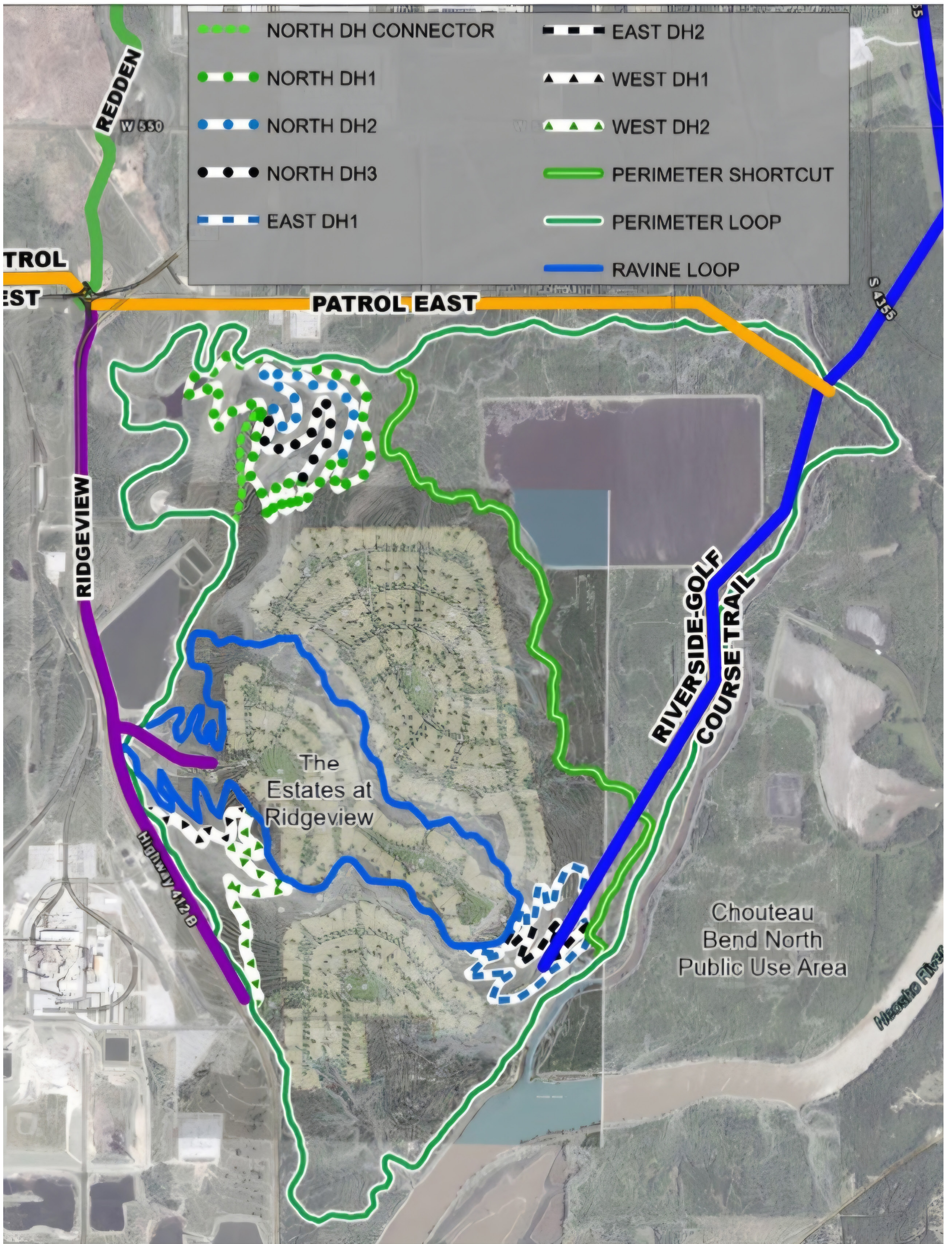


MIDAMERICA CONNECTIVITY PROJECT TRAILS MASTER PLAN



RIDGEVIEW TRAILS AT MIDAMERICA MASTER PLAN



HIKE. BIKE. RUN.



This project was made possible through funding from the Oklahoma Tobacco Settlement Endowment Trust (TSET)



Soft surface trails using sustainable practices to mitigate erosion



Purpose built for mountain biking, hiking and trail running



Rolling contour design resulting in gradual ascents/descents



Combination of machine and hand-built trails, approximately 30" wide



Rock reinforcement to improve drainage and trail durability



Natural rock formations incorporated to enhance user experience