

# OKLAHOMA COVID-19 WEEKLY REPORT

Weekly Epidemiology and Surveillance Report  
August 7– August 13, 2020



**PURPOSE** To provide up-to-date weekly epidemiological data on COVID-19 in Oklahoma.

## SNAPSHOT

	Aug 7– Aug 13	Change <sup>1</sup>	Total
Confirmed cases	4,702	-16.9%	46,103
Recovered cases <sup>2</sup>	4,335	-26.6%	38,655
Deaths	45	-23.7%	638

1. Change from the week of Jul 31-Aug 6, 2020.

2. Currently not hospitalized or deceased and 14 days after onset/report.

Cases		Deaths	
Persons aged 50 and over	Females	Persons aged 50 and over	Males
<b>32%</b>	<b>52%</b>	<b>96%</b>	<b>54%</b>
of <u>cases</u>	of <u>cases</u>	of <u>deaths</u>	of <u>deaths</u>

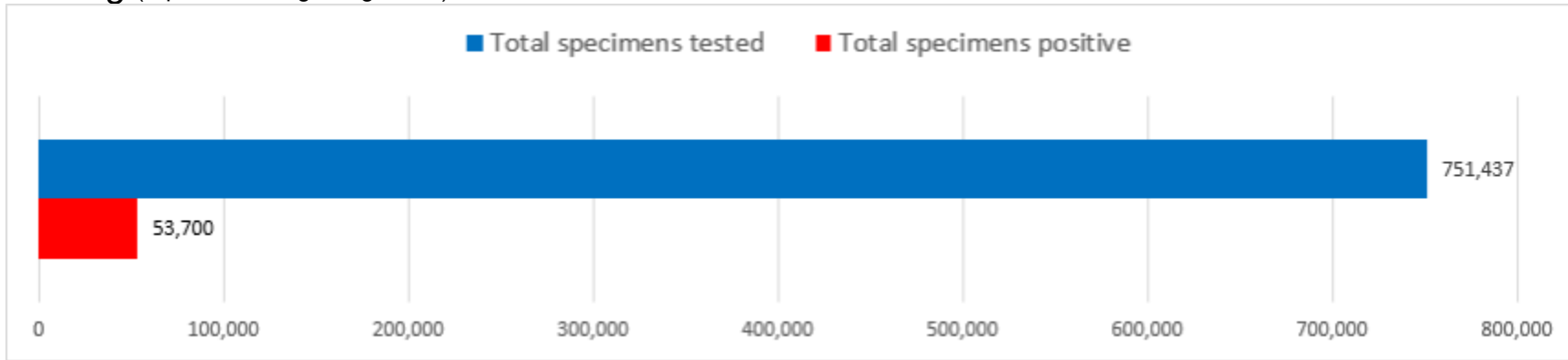
The average age of cases was **40** years.

The youngest case was **less than a year old** and the oldest case was **100+ years**.

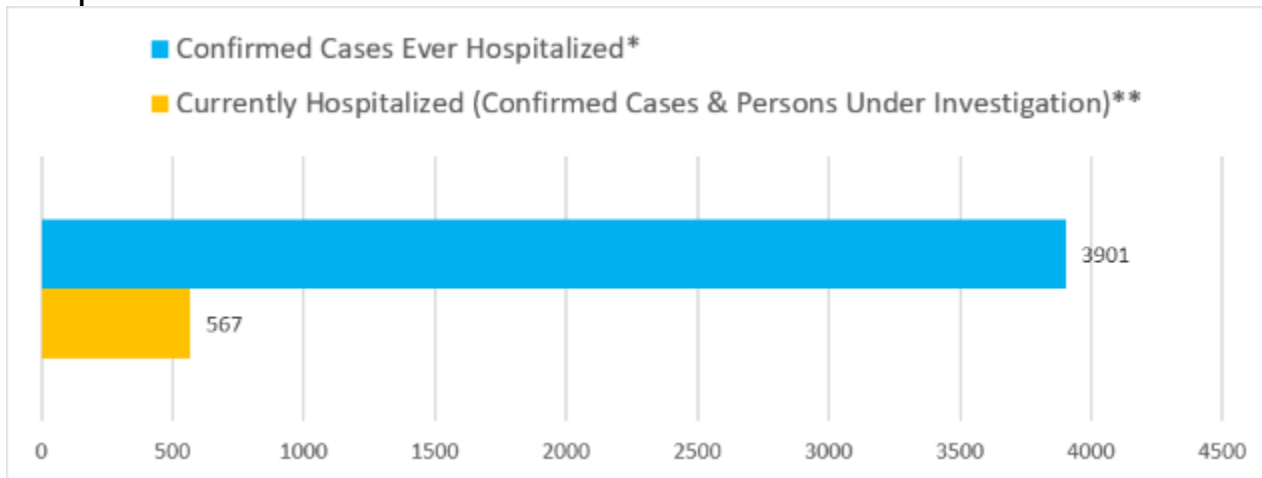
The average age of individuals who died was **74** years.

The youngest individual to die from COVID-19 was **less than 15 years** and the oldest was **100+ years**.

## Testing (reported through August 13)



## Hospitalizations



\*Ever hospitalized includes discharged, deceased, currently hospitalized and recovered as of 8/13/2020.

\*\*Source OSDH Beds Survey. Note, facility response rate of 99% on 8/13/2020.

---

## KEY POINTS

- **4,702** confirmed cases in the past week  
16.9% decrease from the week before (Jul 31-Aug 6).
  - **45** deaths occurred in the past week  
23.7% decrease from the week before (Jul 31-Aug 6).
  - **3,901 (8.5%)** confirmed cases have been hospitalized
  - **404** confirmed cases were reported to OSDH as hospitalized in the past week  
2.8% increase from the week before (Jul 31-Aug 6)
  - 751,437 specimens have been tested in total
  - **77** counties (out of 77) have had at least one confirmed case of COVID-19
- 

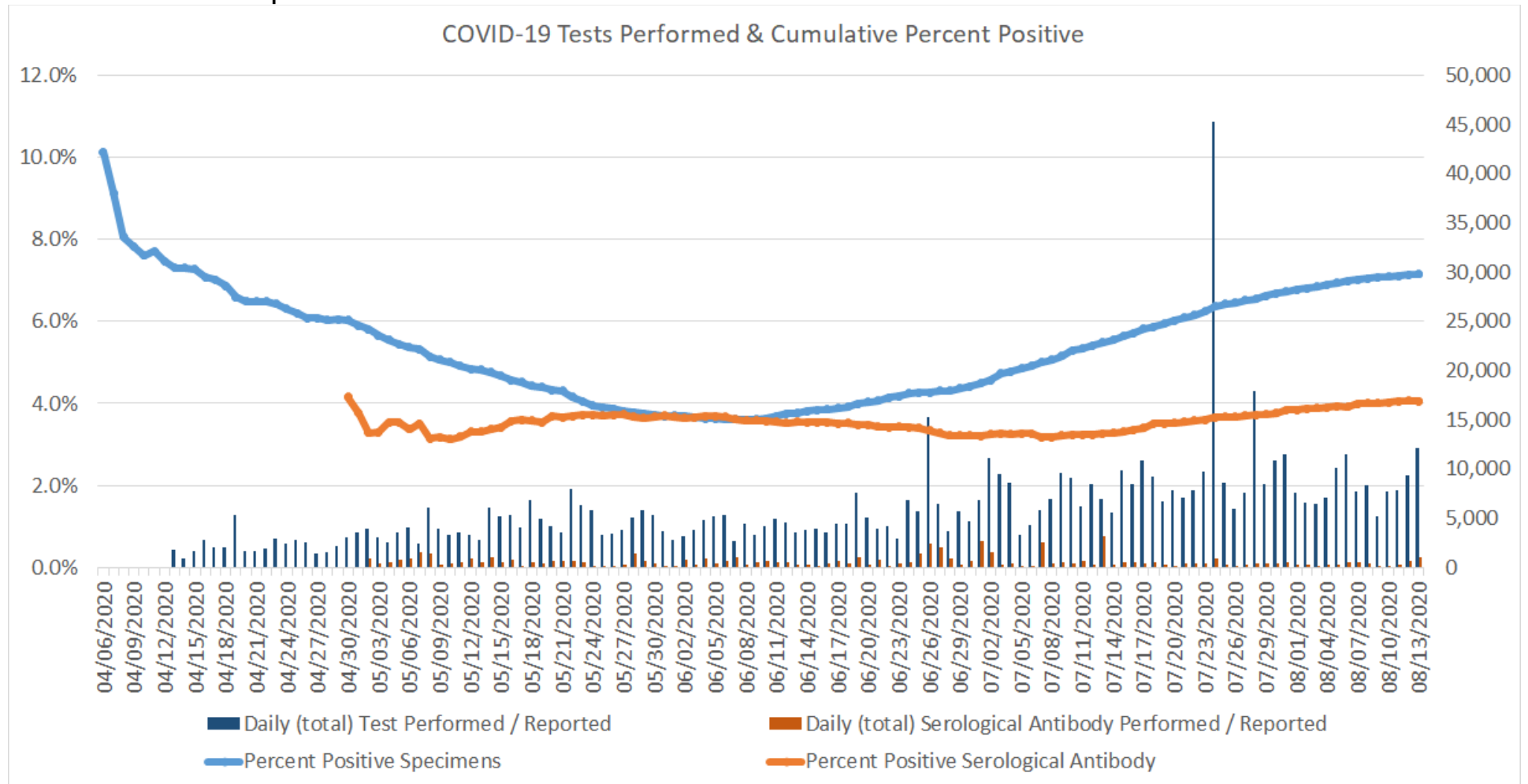
## DISEASE TESTING

	Aug 7 – Aug 13	Total Number
Specimens tested <sup>1</sup> , count	58,128	751,437
Specimens positive, count (%)	5,239 (9.0%)	53,700 (7.1%)
Antibody tested, count	2,973	65,475
Antibody positive, count (%)	203 (6.8%)	2,649 (4.0%)

1. Includes state and private laboratories.

Note: Specimen counts may not reflect unique individuals.

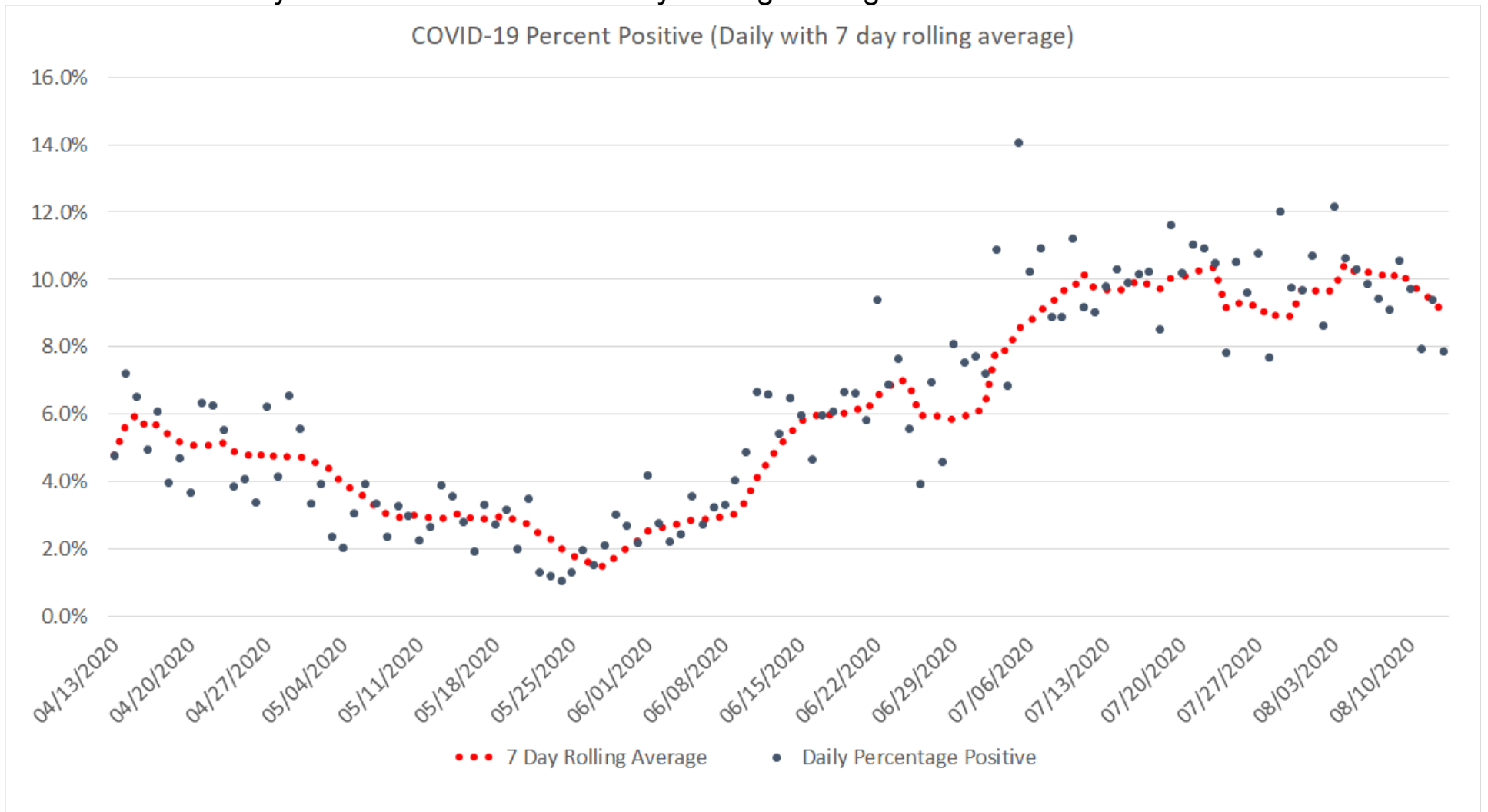
# Positive tests as a percent of total tests



Oklahoma, August 13, 2020

Note: On July 24, 2020 fourteen labs began reporting to OSDH that had been testing since May 18, 2020.

# Covid-19 Tests Daily Percent Positive with 7 Day Rolling Average



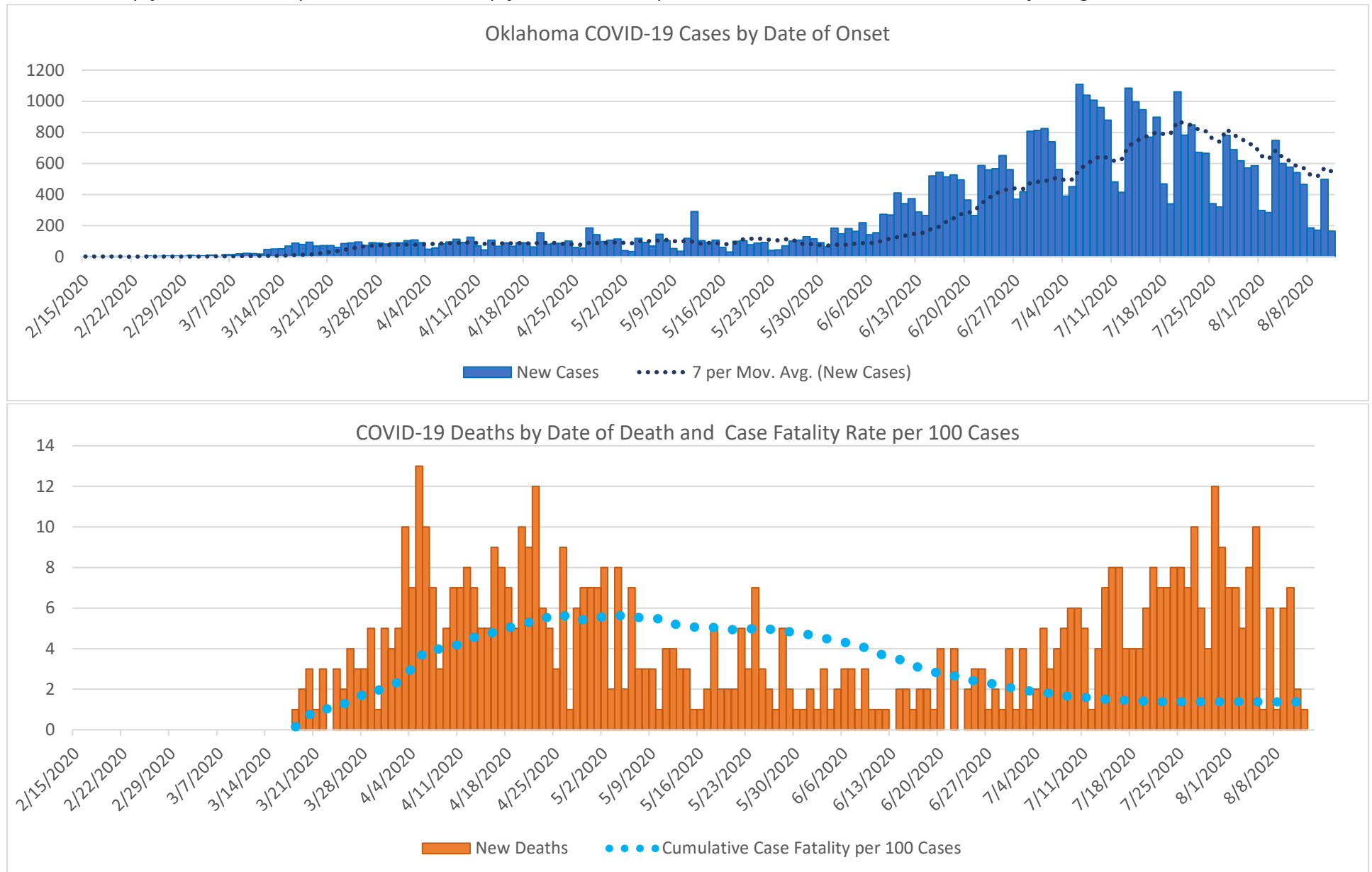
Oklahoma, August 13, 2020

## EPIDEMIOLOGICAL ESTIMATES

	Estimate	Notes / Interpretation
<b>Cases</b>		
Cumulative incidence*	1,169.2 (per 100,000 persons)	From July 31 to August 13, there were about 1,169 per 100,000) new cases of COVID-19 in Oklahoma.
Absolute change in cumulative incidence from previous week	-24.3 (per 100,000 persons)	Compared to July 31 – August 6 there were 24 (per 100,000) fewer cases of COVID-19 reported in Oklahoma during the past week (Aug 7 – Aug 13).
<b>Disease Severity</b>		
Case-fatality risk (crude)	1.4%	The estimate is not adjusted for the lag time from reporting to death (i.e., delay between the time someone dies and the time their death is reported). The fatality estimate could be lower due to cases that were undiagnosed or had milder symptoms.
Cumulative Hospitalization rate (overall)	98.9 (per 100,000 persons)	About 98 people per 100,000 have ever been hospitalized for COVID-19 during this outbreak.

# CASES AND DEATHS

New cases (by date of onset) and new deaths (by date of death) of COVID-19 in Oklahoma, February–August 2020



Data as of August 13, 2020.

Please note the different axes for new cases (top—from 0 to 1,200 for new cases) and new deaths (bottom—from 0 to 14 for new deaths). Additionally, a 7 day lag has been applied to the trend line based on information collected to-date for 7/19 and 7/25 where within 7 days of onset date approximately 80% of the cases had been reported.

## Oklahoma Excess Death Analysis

- + indicates observed count above threshold
- Predicted number of deaths from all causes
- threshold for excess deaths

Weekly number of deaths (from all causes)

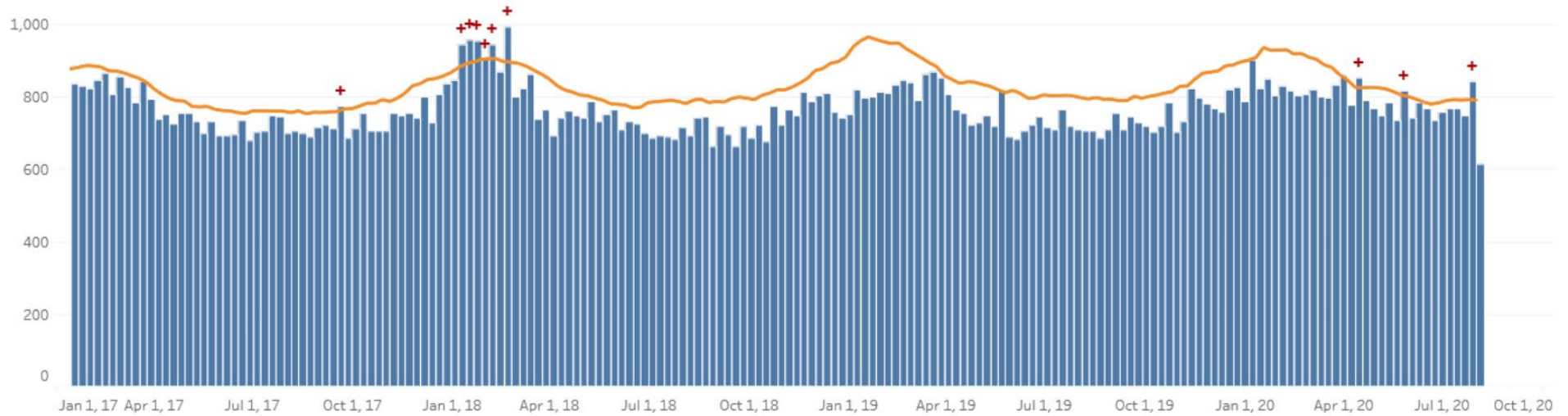
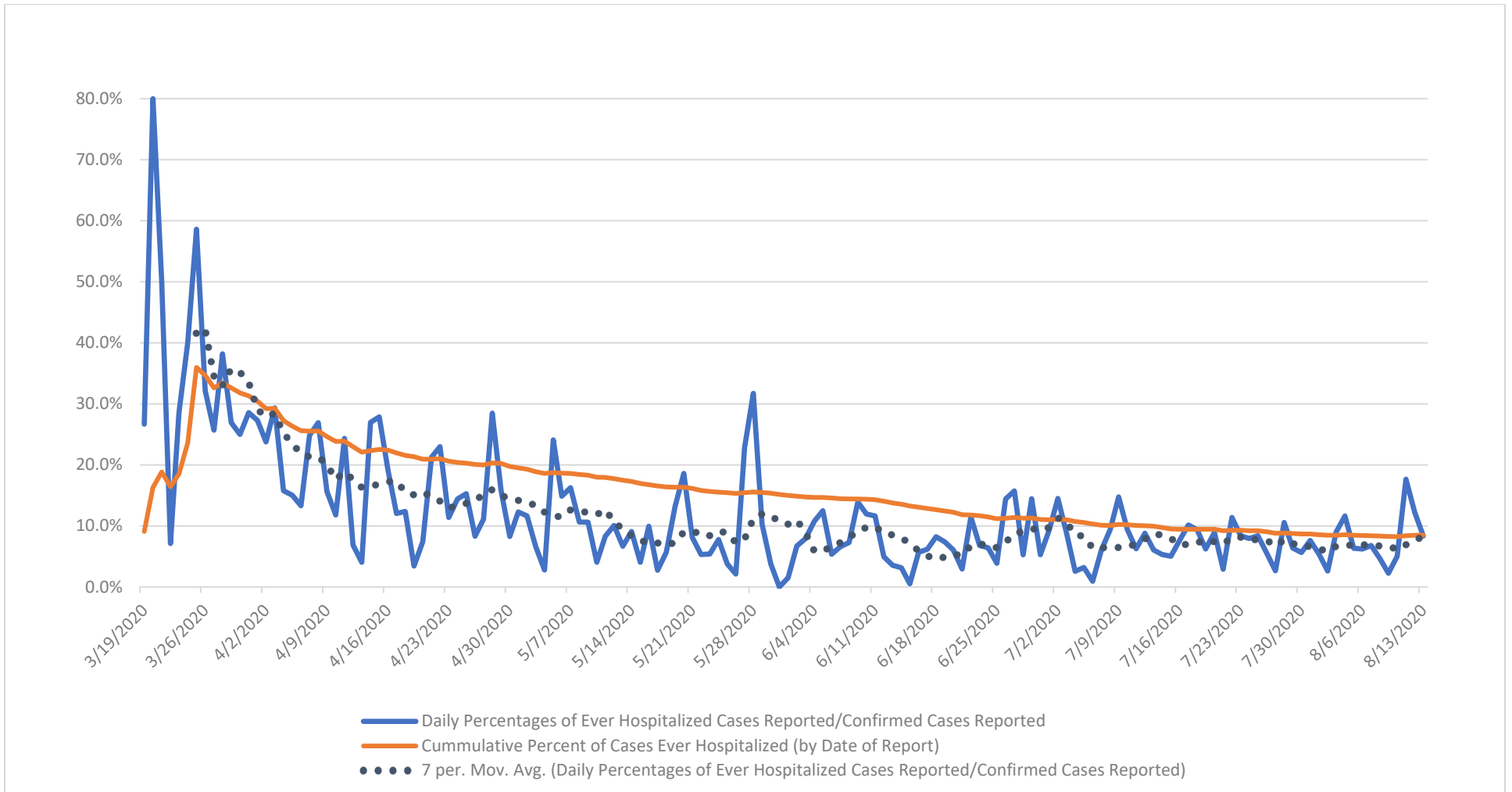


Figure notes: Contains data up to the week-ending date of August 1 2020. Data in recent weeks are incomplete. Only 60% of the death records are submitted to NCHS within 1-days of the date of death, and completeness varies by jurisdiction.

Source: CDC, National Center for Health Statistics, [https://www.cdc.gov/nchs/nvss/vsrr/covid19/excess\\_deaths.htm#dashboard](https://www.cdc.gov/nchs/nvss/vsrr/covid19/excess_deaths.htm#dashboard), Aug 13, 2020 10:30am



### PERCENT OF CASES EVER HOSPITALIZED (by date of report)



Source: OSDH Acute Disease Registry

**TIME TO EVENT\***

	<b>N</b>	<b>Median</b>	<b>10<sup>th</sup> to 90<sup>th</sup> Percentile</b>
Time from Symptom Onset to Test (Specimen Collection) <sup>1,2</sup>	20,721	3 days	0-10 days
Time from Symptom Onset to Hospitalization <sup>1,3</sup>	2,392	6 days	0-14 days
Length of Hospitalization Discharged Alive <sup>4</sup>	1,888	5 days	1-15 days
Length of Hospitalization Deceased <sup>4</sup>	462	9 days	2-24 days
Time from Symptom Onset to Death <sup>1,5</sup>	390	14 days	5-32 days

\*Data as of August 6, 2020.

1. Limited to cases with a known date of symptom onset.
  2. Limited to cases with a known date of a test (specimen collection) on or after the date of symptom onset.
  3. Limited to cases with a known hospital admission date on or after the date of symptom onset.
  4. Limited to cases with a known admission and discharge date from the hospital.
  5. Limited to cases who are deceased.
- .....

## DEMOGRAPHIC INFORMATION as of August 13, 2020

	Cases count (%) <sup>1</sup>		Deaths count (%) <sup>1</sup>		Cumulative Incidence Rate <sup>2</sup>	Cumulative Mortality Rate <sup>2</sup>
<b>Oklahoma</b>	46,103		638		1169.2	16.2
<b>Gender</b>						
	Male	21,965 (47.6)	347 (54.4)		1,124.7	17.8
	Female	24,138 (52.4)	291 (45.6)		1,212.9	14.6
<b>Age group</b>						
	Under 1- 4	1,052 (2.3)	0 (0.0)		403.9	0.0
	5-14	2,514 (5.5)	1 (0.2)		467.4	0.2
	15-24	8,467 (18.4)	1 (0.2)		1,574.3	0.2
	25-34	8,561 (18.6)	7 (1.1)		1,576.0	1.3
	35-44	7,494 (16.3)	8 (1.3)		1,528.2	1.6
	45-54	6,433 (14.0)	29 (4.5)		1,397.5	6.3
	55-64	5,254 (11.4)	88 (13.8)		1,064.8	17.8
	65-74	3,406 (7.4)	172 (27.0)		949.7	48.0
	75-84	1,916 (4.2)	167 (26.2)		1020.7	89.0
	85+	1,006 (2.2)	165 (25.9)		1,374.4	225.4
<b>Race</b>						
	American Indian or Alaska Native	4,204 (9.1)	62 (9.7)		1,368.6	20.2
	Asian or Pacific Islander	1,910 (4.1)	15 (2.4)		2,156.9	16.9
	Black or African American	3,184 (6.9)	39 (6.1)		1106.8	13.6
	Multiracial/Other	1,841 (4.0)	22 (3.4)		444.9	5.3
	White	25,188 (54.6)	463 (72.6)		885.1	16.3
	Unknown	9,776 (21.2)	37 (5.8)			
<b>Ethnicity</b>						
	Hispanic or Latino	9,256 (20.1)	46 (7.2)		2,157.2	10.7
	Not Hispanic or Latino	26,300 (57.0)	526 (82.4)		748.4	15.0
	Unknown	10,547 (22.9)	66 (10.3)			

1. Percentages may not add up to 100 due to rounding.

2. Rate per 100,000 population

## HEALTHCARE & NON-HEALTHCARE

Status <sup>1</sup>	Non-Healthcare Worker count (%) <sup>*</sup>	Healthcare Worker count (%) <sup>*</sup>
Active	6,603 (15.2)	207 (8.1)
Deceased	629 (1.4)	9 (0.4)
Recovered	36,319 (83.4)	2,336 (91.5)
<b>Total</b>	<b>43,551</b>	<b>2,552</b>

<sup>\*</sup> Percentages may not add up to 100 due to rounding.

1. Data as of August 13, 2020

## CASES & DEATHS BY LONG-TERM CARE AND CORRECTIONAL FACILITIES

	Cases	Deaths
<b>LTCF<sup>1,2</sup></b>		
Residents	1,676	267
Staff	981	3
<b>Total</b>	<b>2,656</b>	<b>270</b>
<b>Correctional Facilities<sup>2,3</sup></b>		
Inmates	645	4
Staff	193	1
<b>Total</b>	<b>838</b>	<b>5</b>

1. Long term care facility or nursing home

2. Data as of August 13, 2020.

3. Correctional facilities include prisons, jails, and juvenile detention centers.

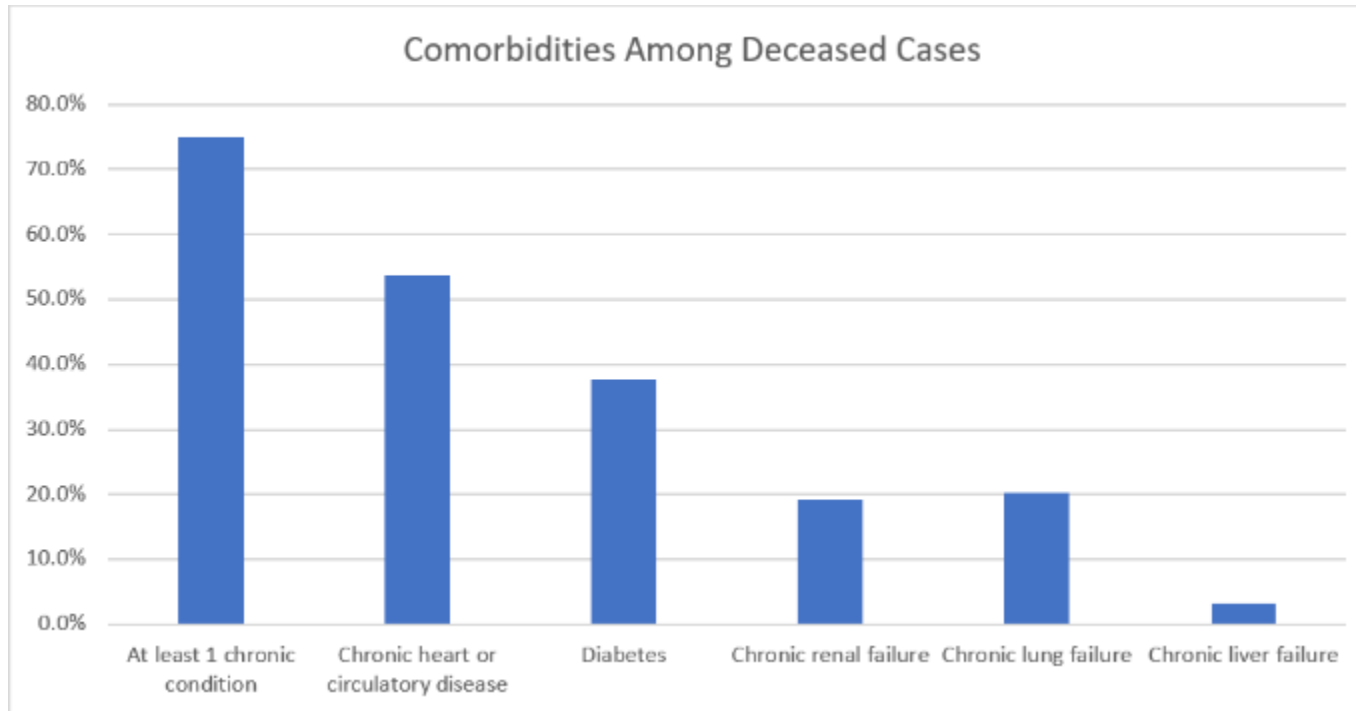
## AGE DISTRIBUTION OF NEW CASES/DEATHS CONFIRMED FROM AUGUST 6– AUGUST 13

Age group	New Cases	Percentage	New Deaths	Percentage
Under 1- 4	118	2.5%	0	0.0%
5-14	299	6.3%	0	0.0%
15-24	876	18.5%	0	0.0%
25-34	740	15.6%	0	0.0%
35-44	776	16.4%	0	0.0%
45-54	697	14.7%	2	4.4%
55-64	534	11.3%	7	15.6%
65-74	391	8.3%	14	31.1%
75-84	195	4.1%	12	26.7%
85+	108	2.3%	10	22.2%

## COMORBIDITIES AMONG DECEASED CASES

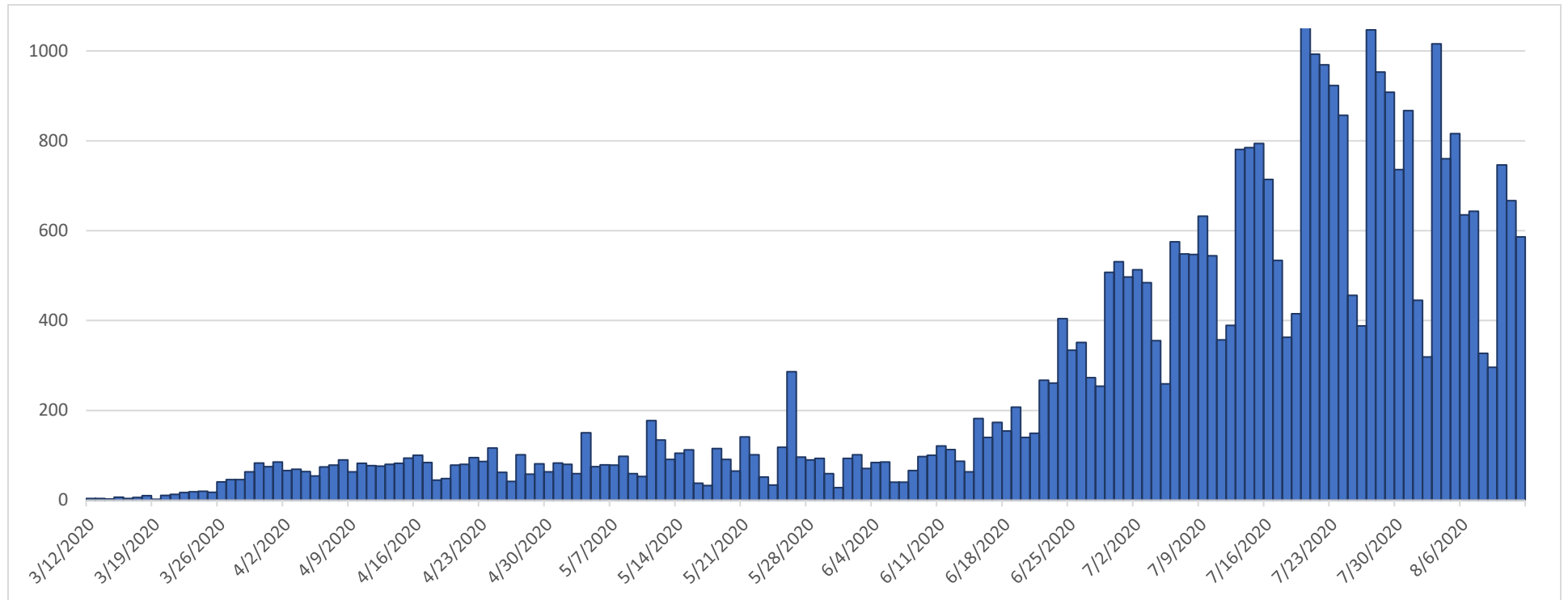
Comorbidities	Number(%)
At least 1 chronic condition*	479 (75.1)
Chronic heart or circulatory disease	342 (53.6)
Diabetes	240 (37.6)
Chronic renal failure	123 (19.3)
Chronic lung failure	129 (20.2)
Chronic liver failure	21 (3.3)

\*Chronic conditions include; chronic heart or circulatory disease, diabetes, chronic lung failure, chronic liver failure and renal failure



# RECOVERED CASES

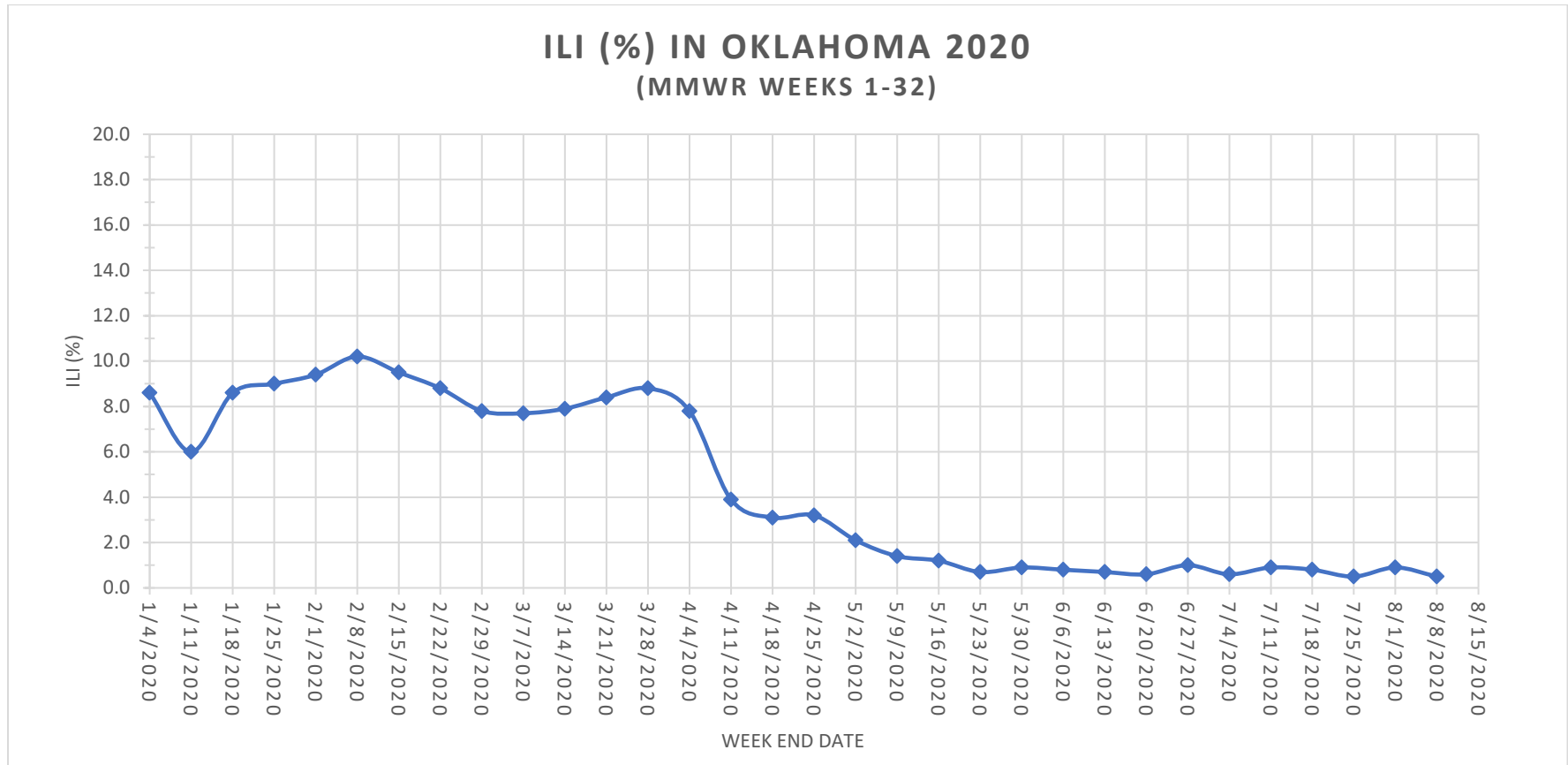
Distribution of **recovered cases of COVID-19**, March-August 2020, Oklahoma



Note: A recovered case is an individual currently not hospitalized or deceased AND 14 days after the onset of symptoms

## Symptoms Criteria

Weekly percentage of **Influenza-Like Illness (ILI)** (%), Morbidity and Mortality Weekly Report, Oklahoma, Jan–Aug 2020

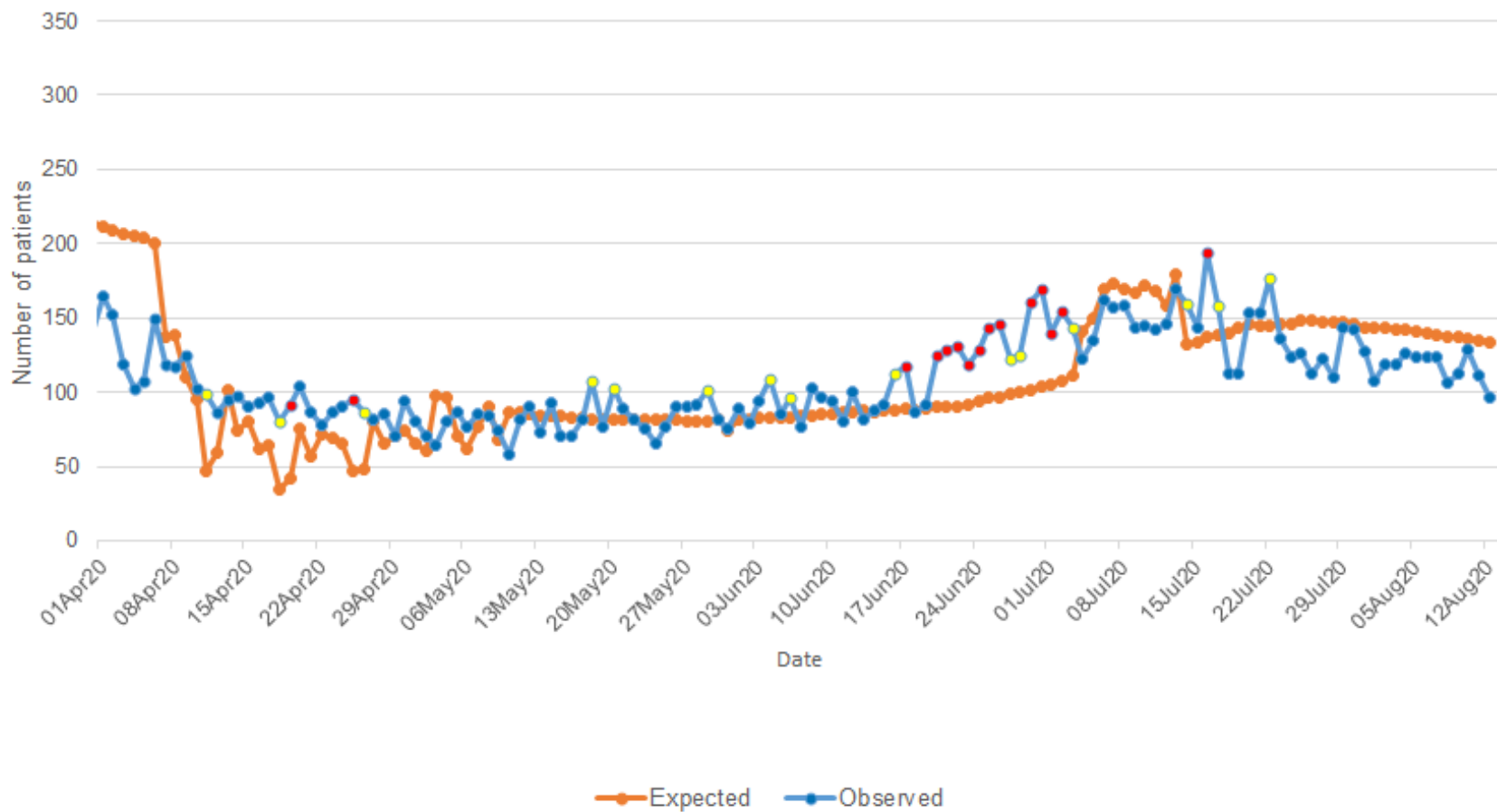


**Interpretation:** Data on Influenza-Like Illness has decreased slightly in the daily number and weekly percentage of influenza-like illness cases in the past week.

---

## COVID-19 Related Emergency Department Visits

### Oklahoma State Syndromic Surveillance of COVID-19 related ED Visits April 1-August 12, 2020



**Interpretation:** Data from syndromic surveillance shows that the number of COVID-19 related emergency department visits has been in the expected range for in the past 2 weeks as indicated by the blue dots on the observed line.

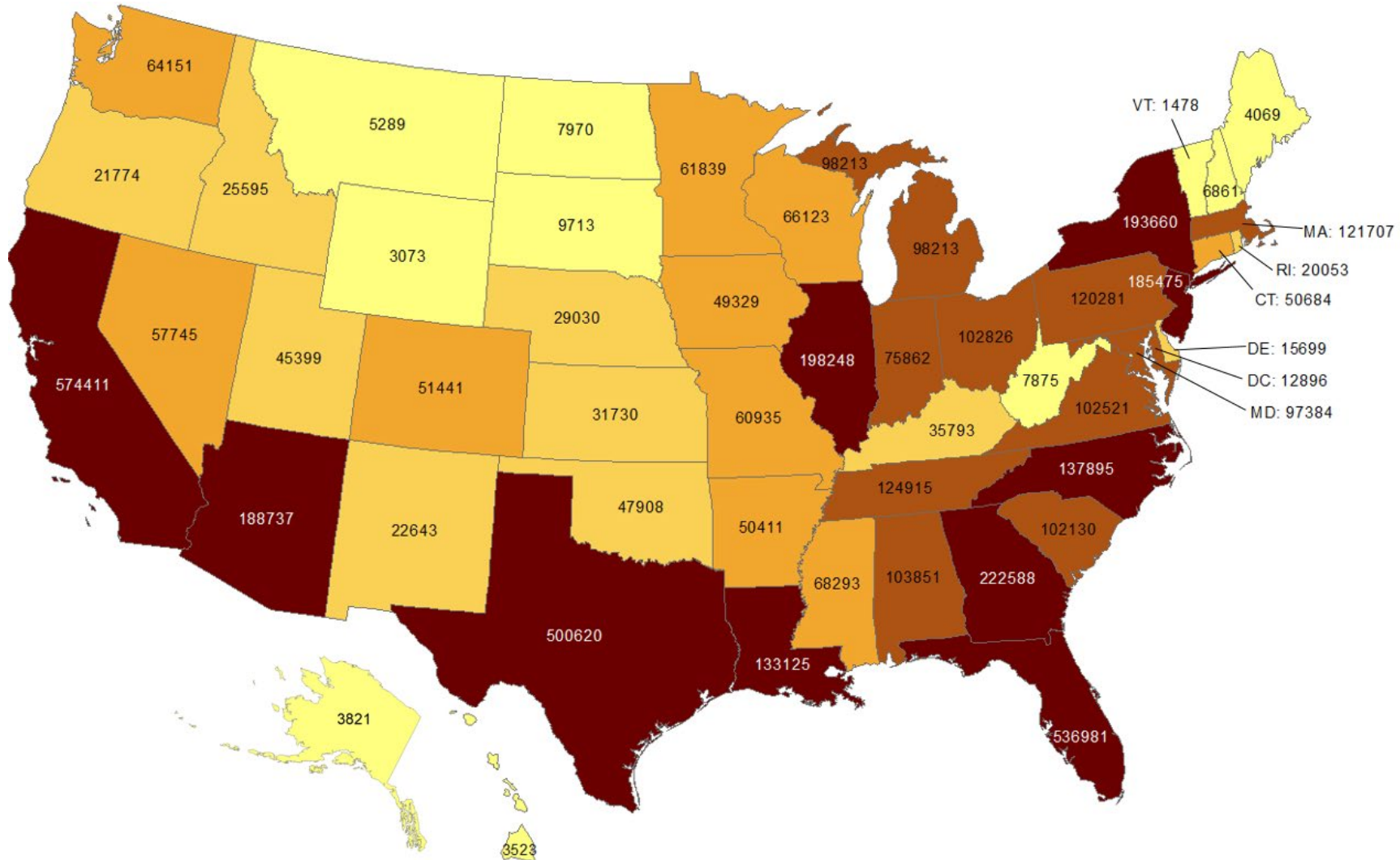


---

## OKLAHOMA IN COMPARISON

### Total number of reported COVID-19 cases

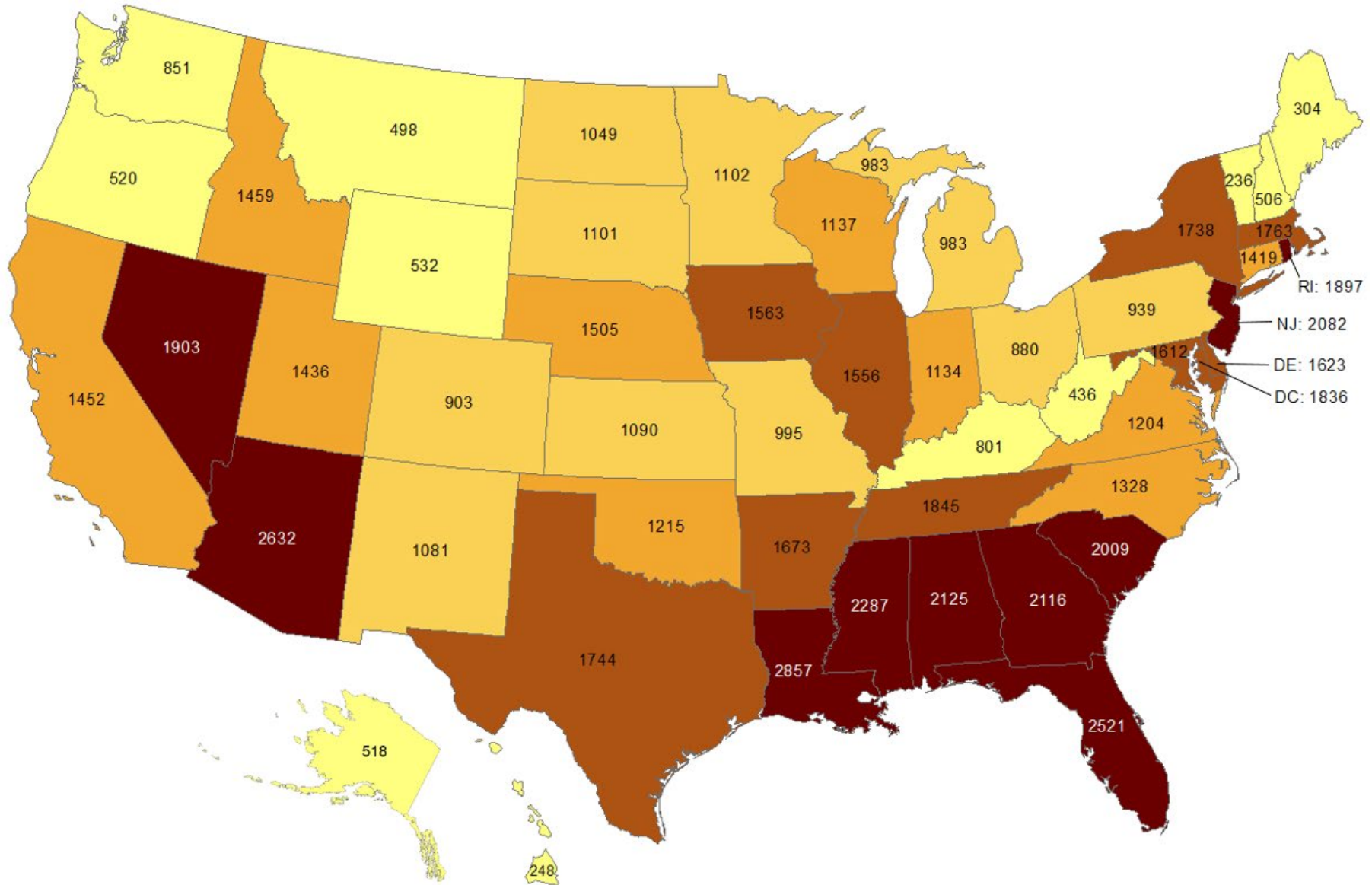
Oklahoma ranks **31** (out of all States and DC) in the total number of reported COVID-19 cases in the US.



Data from CDC. Available at <https://www.cdc.gov/covid-data-tracker/index.html>  
Data as of August 12, 2020

## Cumulative incidence of reported COVID-19 cases

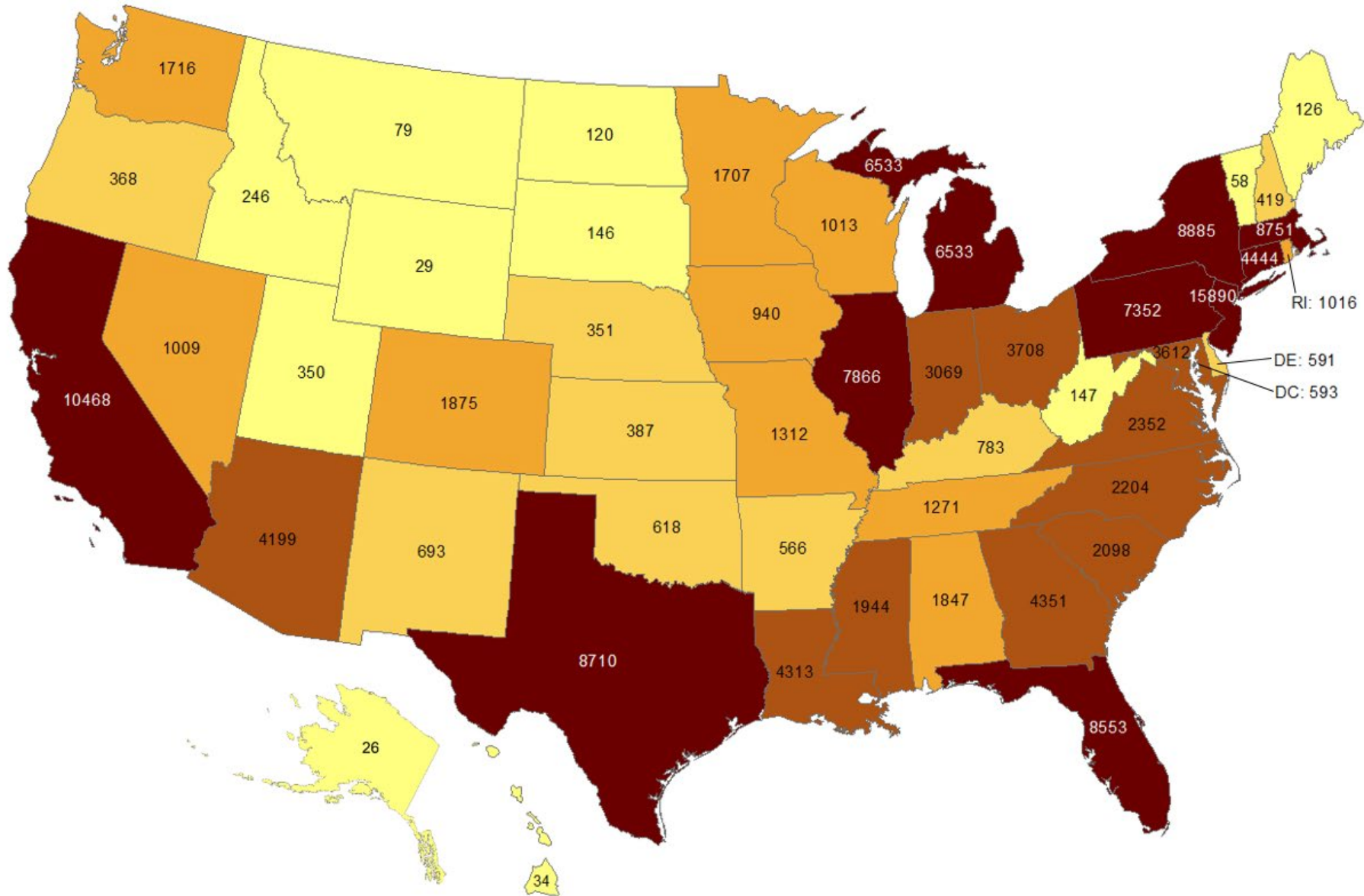
Oklahoma ranks **27** (out of all States and DC) in the cumulative incidence (per 100,000 persons) of reported COVID-19 cases in the US.



Data from CDC. Available at <https://www.cdc.gov/covid-data-tracker/index.html>  
Data as of August 12, 2020

## Total number of reported COVID-19 deaths

Oklahoma ranks **33** (out of all States and DC) in the total number of reported COVID-19 deaths in the US.



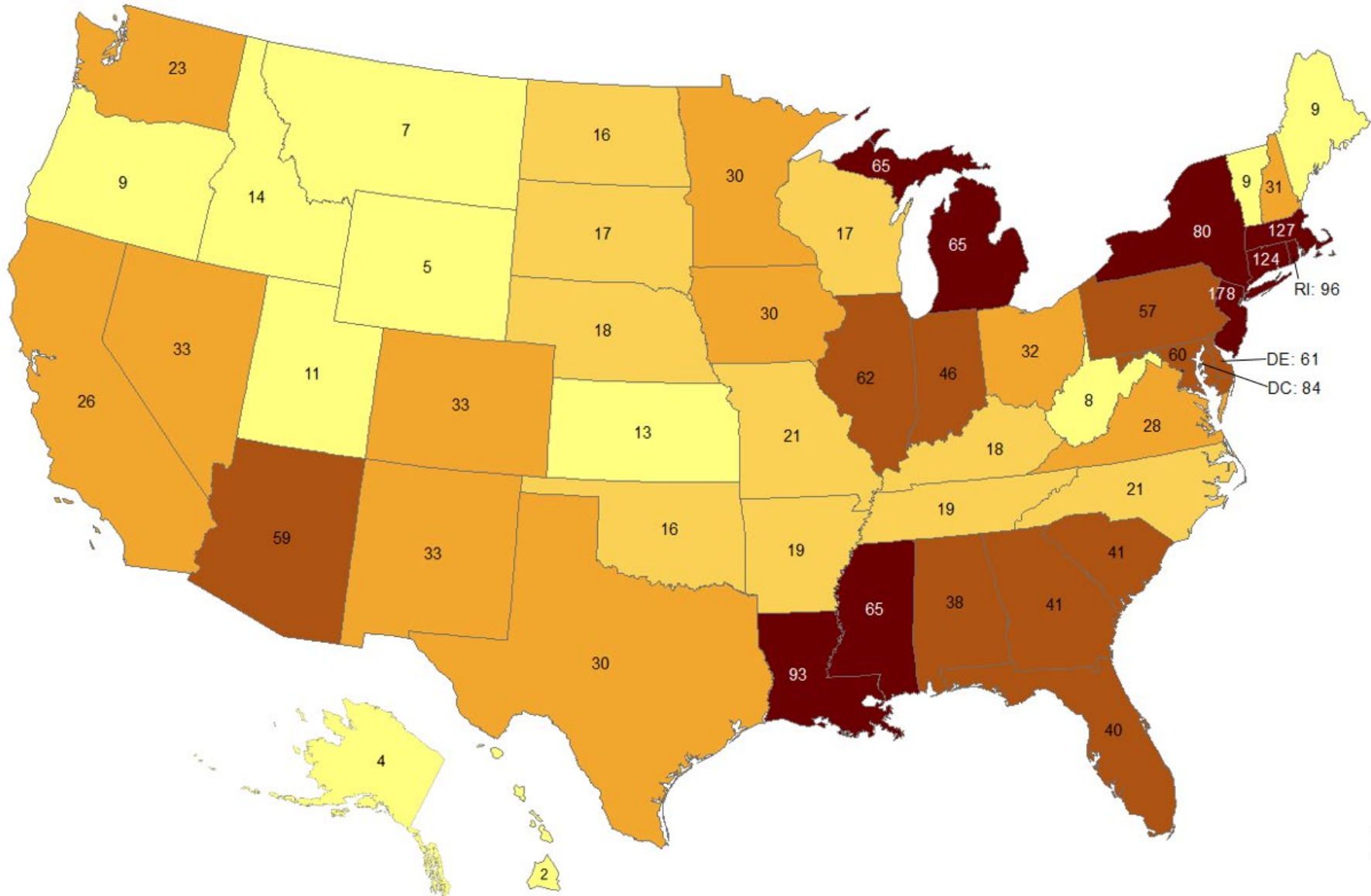
Data from CDC. Available at <https://www.cdc.gov/covid-data-tracker/index.html>

Data as of August 12, 2020

NOTE: CDC numbers include both Confirmed and Probable cases whereas the OSDH counts are limited to Confirmed cases.

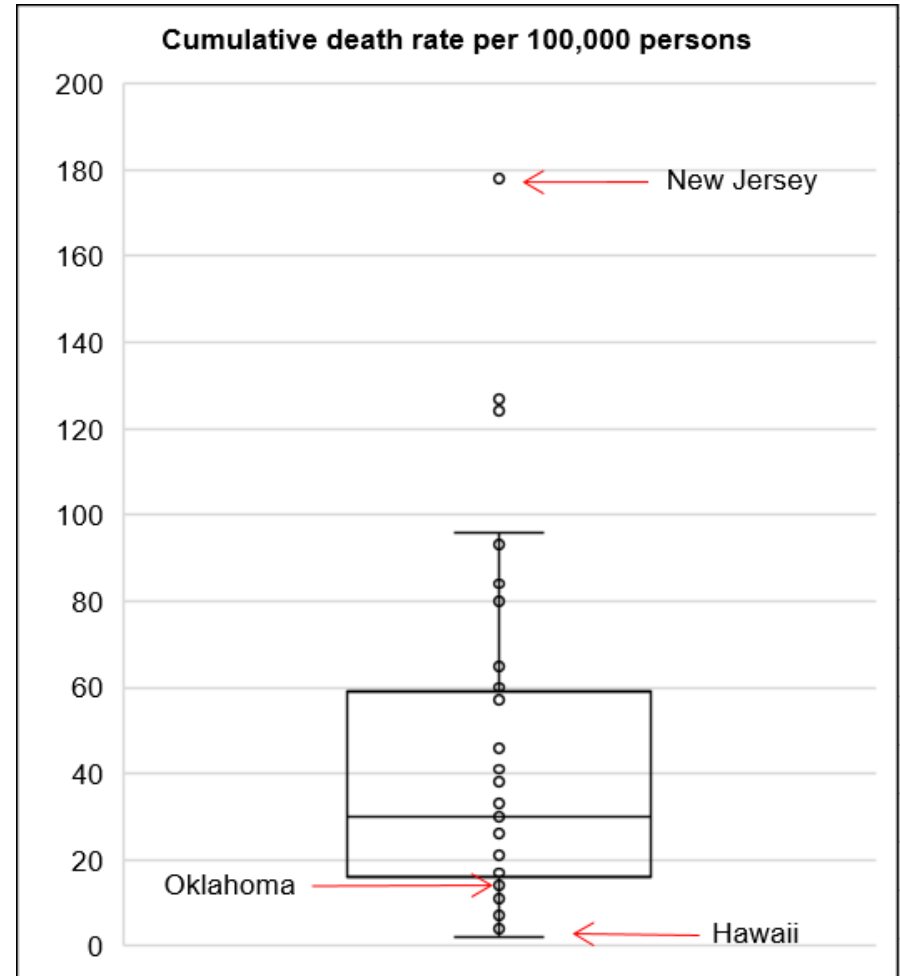
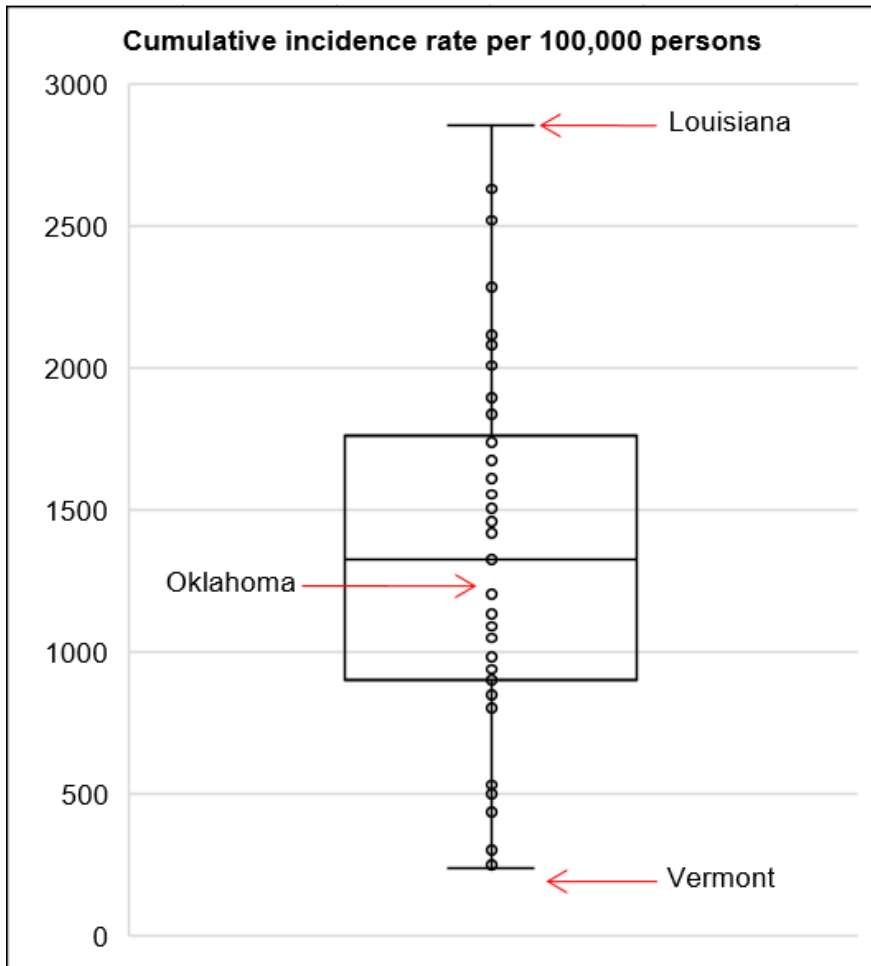
## Cumulative death rate of reported COVID-19 cases

Oklahoma ranks **39** (out of all States and DC) in the cumulative death rate (per 100,000 persons) of reported COVID-19 cases in the US.



Data from CDC. Available at <https://www.cdc.gov/covid-data-tracker/index.html>  
Data as of August 12, 2020

## Cumulative incidence and cumulative death rate of reported COVID-19 cases



**Interpretation:** Oklahoma has cumulative incidence and cumulative death rate **below the median** of the US.

---

---

## **ACKNOWLEDGEMENT**

The weekly report is made by possible through the efforts of county and city public health and healthcare professionals.

---

## **NOTES**

Every effort is made to ensure accuracy and the data is up-to-date for the time period reported.  
For daily updates on COVID-19, please visit <https://coronavirus.health.ok.gov/>

---

## **DISCLAIMER**

The purpose of publishing aggregated statistical COVID-19 data through the OSDH Dashboard, the Executive Order Report, and the Weekly Epidemiology and Surveillance Report is to support the needs of the general public in receiving important and necessary information regarding the state of the health and safety of the citizens of Oklahoma. These resources may be used only for statistical purposes and may not be used in any way that would determine the identity of any reported cases.