

OKLAHOMA COVID-19 WEEKLY REPORT

Weekly Epidemiology and Surveillance Report
October 9 – October 15, 2020



PURPOSE To provide up-to-date weekly epidemiological data on COVID-19 in Oklahoma.

SNAPSHOT

	Oct 9-15	Change ¹	Total
Cases	8,272	15.0%	103,836
Recovered cases ²	7,491	10.1%	88,780
Deaths	58	16%	1,143

1. Change from the week of Oct 2-8, 2020.

2. Currently not hospitalized or deceased and 14 days after onset/report.

Cases		Deaths	
Persons aged 50 and over	Females	Persons aged 50 and over	Males
32%	52%	96%	56%
of <u>cases</u>	of <u>cases</u>	of <u>deaths</u>	of <u>deaths</u>

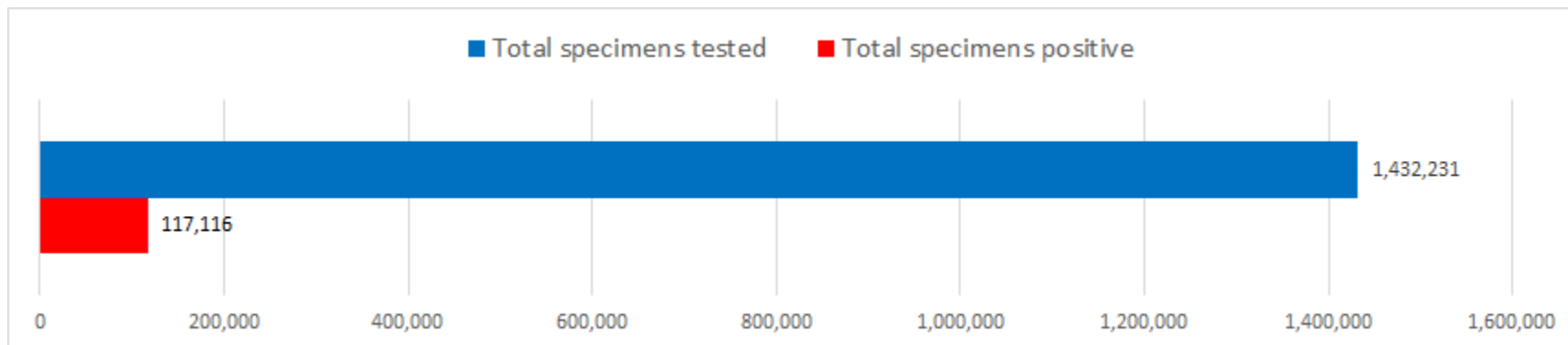
The average age of cases was **40** years.

The youngest case was **less than a year old** and the oldest case was **100+ years**.

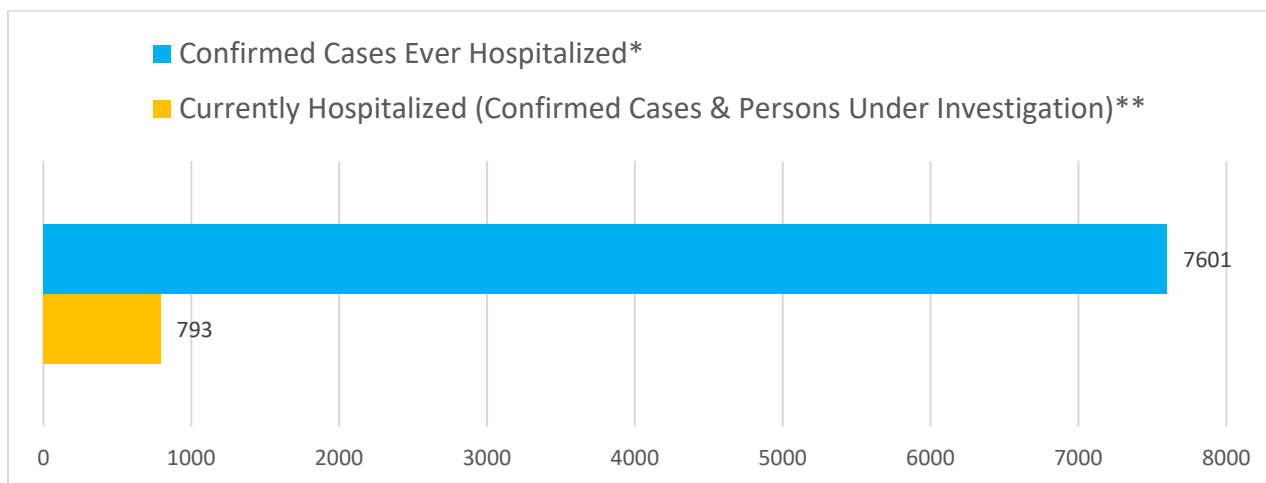
The average age of individuals who died was **75** years.

The youngest individual to die from COVID-19 was **less than 15 years** and the oldest was **100+ years**.

Testing (reported through October 15)



Hospitalizations



*Ever hospitalized includes discharged, deceased, currently hospitalized and recovered as of 10/15/2020.

**Source OSDH Beds Survey. Note, facility response rate of 96% on 10/15/2020.

KEY POINTS

- **8,272** confirmed cases were reported in the past week
15.0% increase from the week before (Oct 2-8).
 - **58** deaths were reported in the past week
16.0% increase from the week before (Oct 2-8).
 - **7,601 (7.3%)** confirmed cases have been hospitalized
 - **579** confirmed cases were reported to OSDH as hospitalized in the past week
13.1% increase from the week before (Oct 2-8)
 - **1,432,231** specimens have been tested in total
 - **77** counties (out of 77) have had at least one confirmed case of COVID-19
-

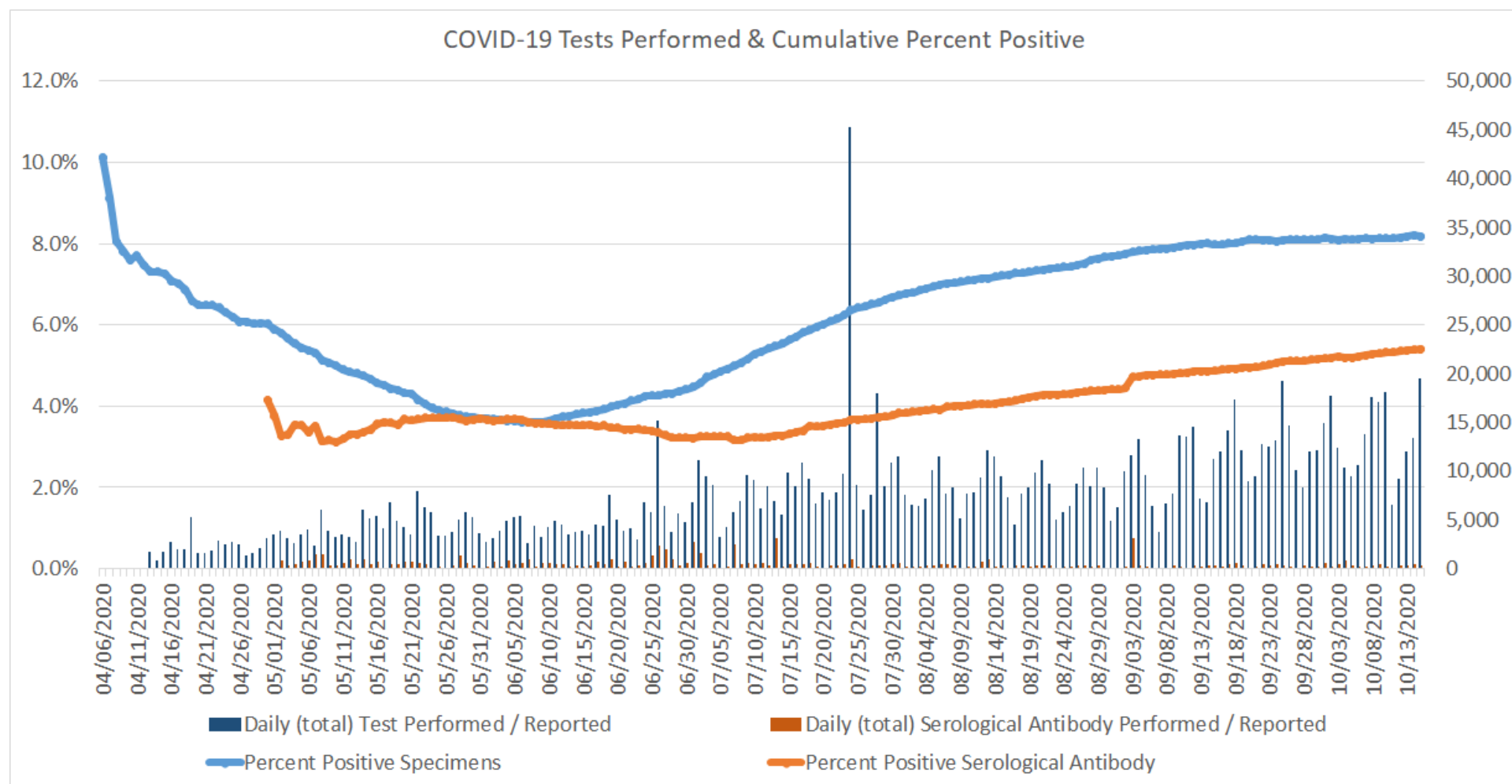
DISEASE TESTING

	Oct 9 – Oct 15	Total Number
Specimens tested ¹ , count	95,669	1,432,231
Specimens positive, count (%)	8,576 (9.0%)	117,116 (8.2%)
Johns Hopkins positivity %	8.6%	7.3%
Antibody tested, count	2,155	85,717
Antibody positive, count (%)	224 (10.4%)	4,635 (5.4%)

1. Includes state and private laboratories.

Note: Specimen counts may not reflect unique individuals.

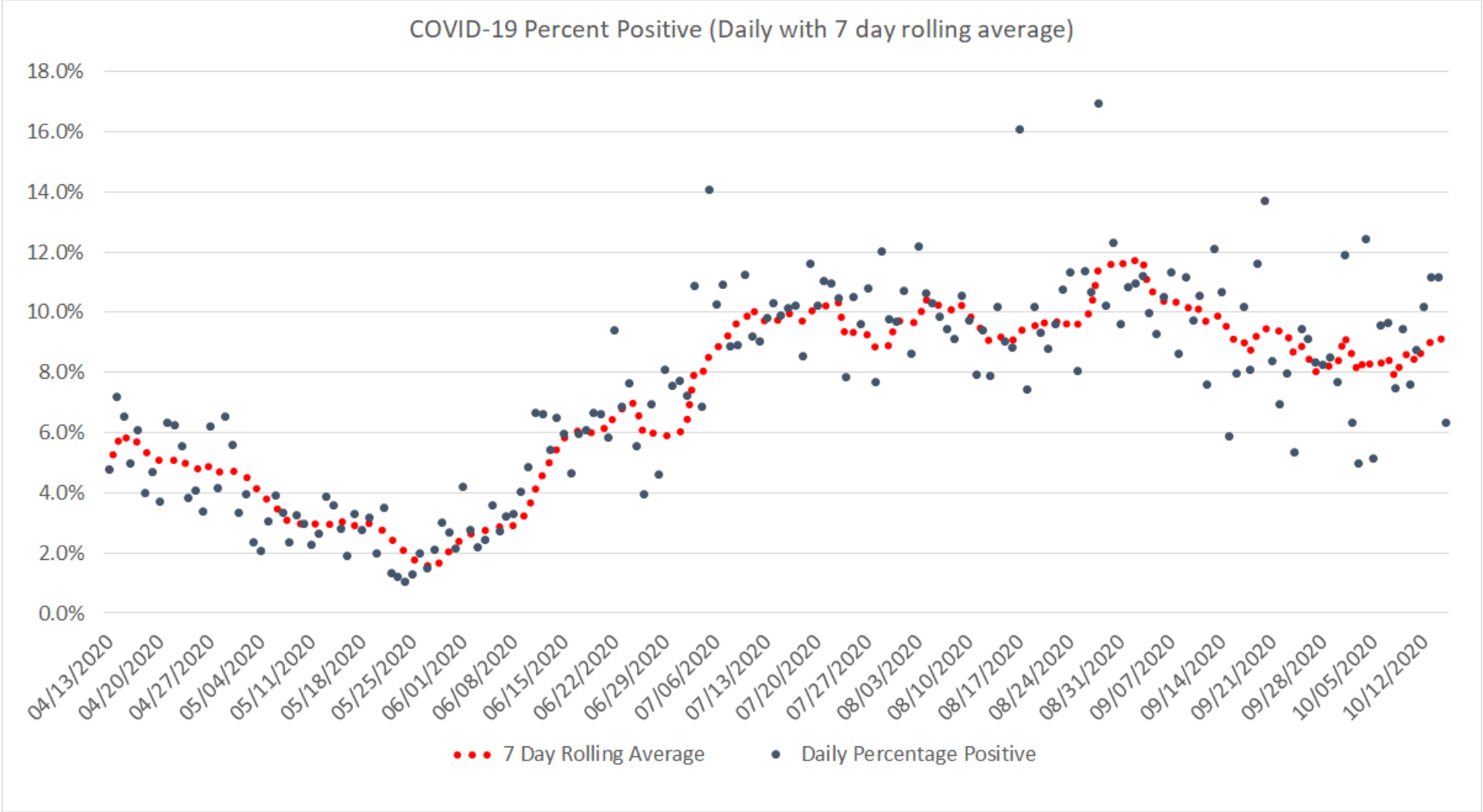
Positive tests as a percent of total tests



Oklahoma, October 15, 2020

Note: On July 24, 2020 fourteen labs began reporting to OSDH that had been testing since May 18, 2020.

Covid-19 Tests Daily Percent Positive with 7 Day Rolling Average



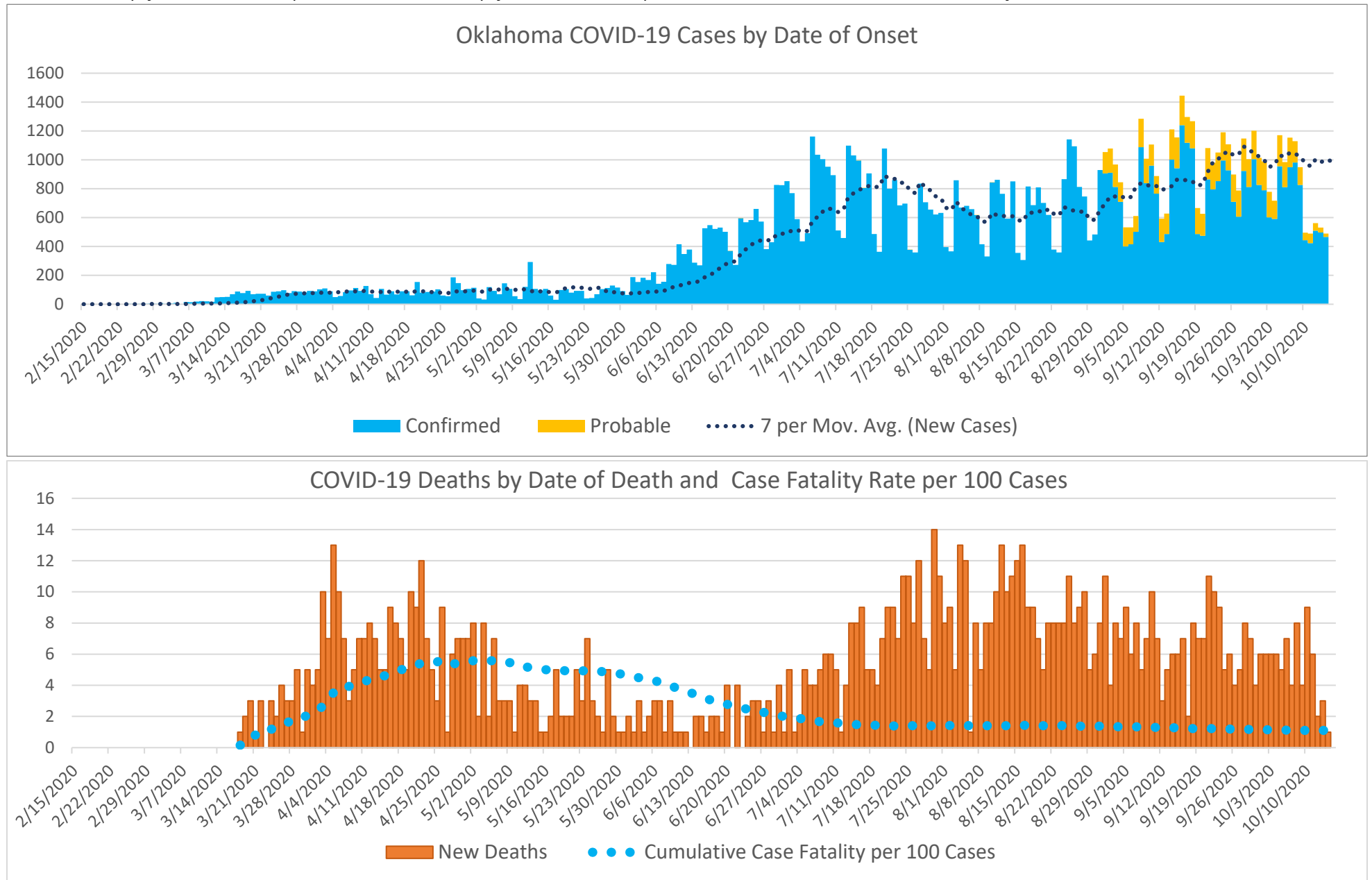
Oklahoma, October 15, 2020

EPIDEMIOLOGICAL ESTIMATES

	Estimate	Notes / Interpretation
Cases		
Cumulative incidence*	2,633.4 (per 100,000 persons)	From March 7 to October 15, there were about 2,633 (per 100,000) new cases of COVID-19 in Oklahoma.
Absolute change in cumulative incidence from previous week	27.3 (per 100,000 persons)	Compared to October 2 – October 8 there were 27 (per 100,000) more cases of COVID-19 reported in Oklahoma during the past week (Oct 9– Oct 15).
Disease Severity		
Case-fatality risk (crude)	1.1%	The estimate is not adjusted for the lag time from reporting to death (i.e., delay between the time someone dies and the time their death is reported). The fatality estimate could be lower due to cases that were undiagnosed or had milder symptoms.
Cumulative Hospitalization rate (overall)	192.8 (per 100,000 persons)	About 192 people per 100,000 have ever been hospitalized for COVID-19 during this outbreak.

CASES AND DEATHS

New cases (by date of onset) and **new deaths** (by date of death) of COVID-19 in Oklahoma, February–October 2020



Please note the different axes for new cases (top—from 0 to 1,600 for new cases) and new deaths (bottom—from 0 to 16 for new deaths). Additionally, a 7 day lag has been applied to the trend line based on information collected to-date for 7/19 and 7/25 where within 7 days of onset date approximately 80% of the cases had been reported.

Oklahoma Excess Death Analysis

- + indicates observed count above threshold
- Predicted number of deaths from all causes
- threshold for excess deaths

Weekly number of deaths (from all causes)

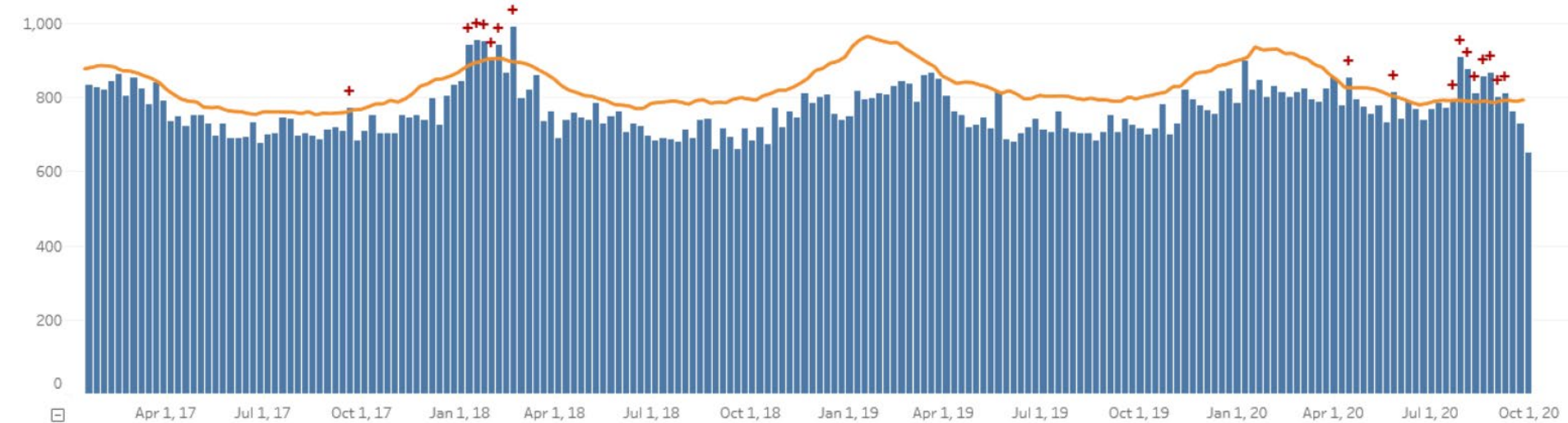
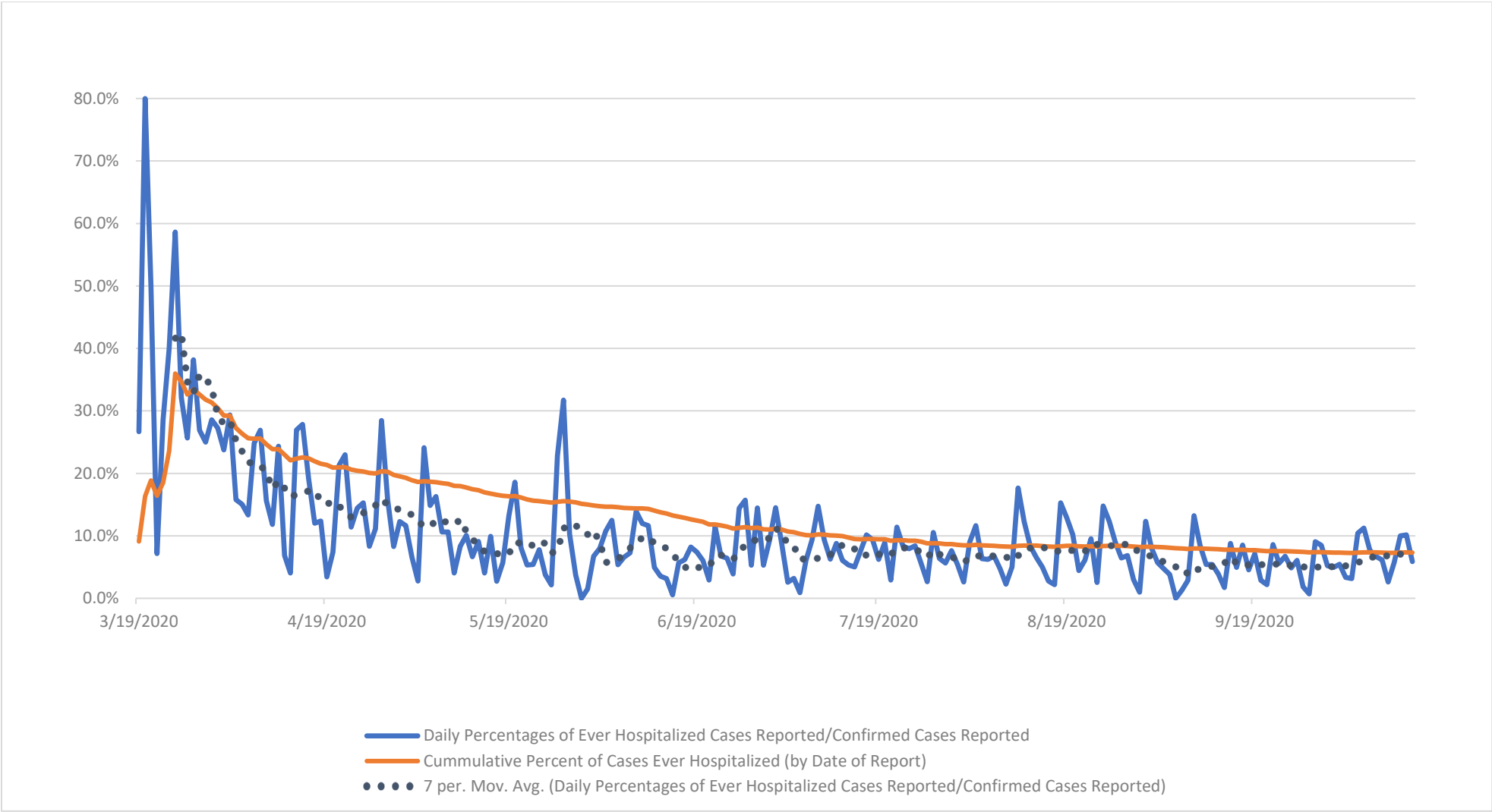


Figure notes: Contains data up to the week-ending date of October 3, 2020. Data in recent weeks are incomplete. Only 60% of the death records are submitted to NCHS within 1-days of the date of death, and completeness varies by jurisdiction.

Source: CDC, National Center for Health Statistics, https://www.cdc.gov/nchs/nvss/vsrr/covid19/excess_deaths.htm#dashboard, Oct 15, 2020 11am

.....

PERCENT OF CASES EVER HOSPITALIZED (by date of report)



Source: OSDH Acute Disease Registry

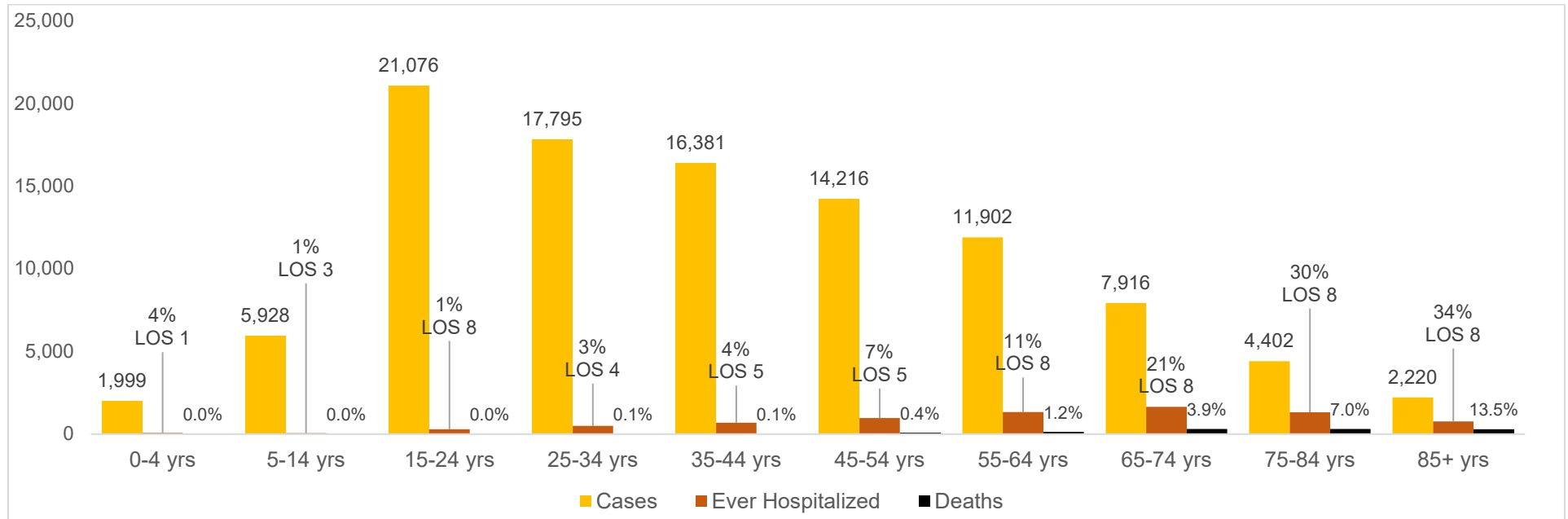
.....

TIME TO EVENT*

	N	Median	10 th to 90 th Percentile
Time from Symptom Onset to Test (Specimen Collection) ^{1,2}	48,259	2 days	0-9 days
Time from Symptom Onset to Hospitalization ^{1,3}	4,598	6 days	0-14 days
Length of Hospitalization Discharged Alive ⁴	3,446	4 days	1-15 days
Length of Hospitalization Deceased ⁴	891	10 days	2-26 days
Time from Symptom Onset to Death ^{1,5}	707	15 days	5-34 days

1. Limited to cases with a known date of symptom onset.
2. Limited to cases with a known date of a test (specimen collection) on or after the date of symptom onset.
3. Limited to cases with a known hospital admission date on or after the date of symptom onset.
4. Limited to cases with a known admission and discharge date from the hospital.
5. Limited to cases who are deceased.

CUMULATIVE CASES, PERCENT HOSPITALIZED, AVERAGE LENGTH OF STAY (AUGUST CASES) AND DEATHS BY AGE GROUP



DEMOGRAPHIC INFORMATION as of October 15, 2020

		Cases count (%) ¹		Deaths count (%) ¹		Cumulative Incidence Rate ²	Cumulative Mortality Rate ²
Oklahoma		103,836		1085		2,633.4	27.5
Gender							
	Male	49,642	(47.8)	637	(55.7)	2,541.8	32.6
	Female	54,194	(52.2)	506	(44.3)	2,723.3	25.4
Age group							
	Under 1- 4	1,999	(1.9)	0	(0.0)	767.6	0.0
	5-14	5,928	(5.7)	1	(0.1)	1,102.0	0.2
	15-24	21,076	(20.3)	2	(0.2)	3,918.7	0.4
	25-34	17,795	(17.1)	11	(1.0)	3,275.8	2.0
	35-44	16,381	(15.8)	19	(1.7)	3,340.4	3.9
	45-54	14,216	(13.7)	51	(4.5)	3,088.4	11.1
	55-64	11,902	(11.5)	142	(12.4)	2,412.0	28.8
	65-74	7,916	(7.6)	309	(27.0)	2,207.2	86.2
	75-84	4,402	(4.2)	309	(27.0)	2,345.1	164.6
	85+	2,220	(2.1)	299	(26.2)	3,033.0	408.5
	Unknown	1	(0.0)				
Race							
	American Indian or Alaska Native	10,194	(9.8)	109	(9.5)	3,318.5	35.5
	Asian or Pacific Islander	3,107	(3.0)	25	(2.2)	3,508.6	28.2
	Black or African American	7,246	(7.0)	74	(6.5)	2,518.8	25.7
	Multiracial/Other	4,109	(4.0)	35	(3.1)	993.1	8.5
	White	60,050	(57.8)	818	(71.6)	2,110.0	28.7
	Unknown	19,130	(18.4)	82	(7.2)		
Ethnicity							
	Hispanic or Latino	16,553	(15.9)	71	(6.2)	3,857.8	16.5
	Not Hispanic or Latino	65,288	(62.9)	935	(81.8)	1,857.9	26.6
	Unknown	21,995	(21.2)	137	(12.0)		

1. Percentages may not add up to 100 due to rounding.

2. Rate per 100,000 population

HEALTHCARE & NON-HEALTHCARE

Status	Non-Healthcare Worker count (%)*	Healthcare Worker count (%)*
Active	13,397 (13.6)	516 (9.7)
Deceased	1,132 (1.2)	11 (0.2)
Recovered	84,008 (85.3)	4,772 (90.1)
Total	98,537	5,299

* Percentages may not add up to 100 due to rounding.

CASES & DEATHS BY LONG-TERM CARE AND CORRECTIONAL FACILITIES

	Cases	Deaths
LTCF¹		
Residents	3,232	429
Staff	1,852	4
Total	5,084	433
Correctional Facilities²		
Inmates	2,672	17
Staff	539	2
Total	3,211	19

1. Long term care facility or nursing home

2. Correctional facilities include prisons, jails, and juvenile detention centers.

AGE DISTRIBUTION OF NEW CASES/DEATHS CONFIRMED FROM OCTOBER 9 - 15

Age group	New Cases*	Percentage	New Deaths	Percentage
Under 1- 4	144	1.7%	0	0.0%
5-14	500	6.0%	0	0.0%
15-24	1354	16.4%	1	1.7%
25-34	1356	16.4%	0	0.0%
35-44	1257	15.2%	2	3.4%
45-54	1221	14.8%	5	8.6%
55-64	1077	13.0%	6	10.3%
65-74	740	8.9%	12	20.7%
75-84	424	5.1%	13	22.4%
85+	199	2.4%	19	32.8%

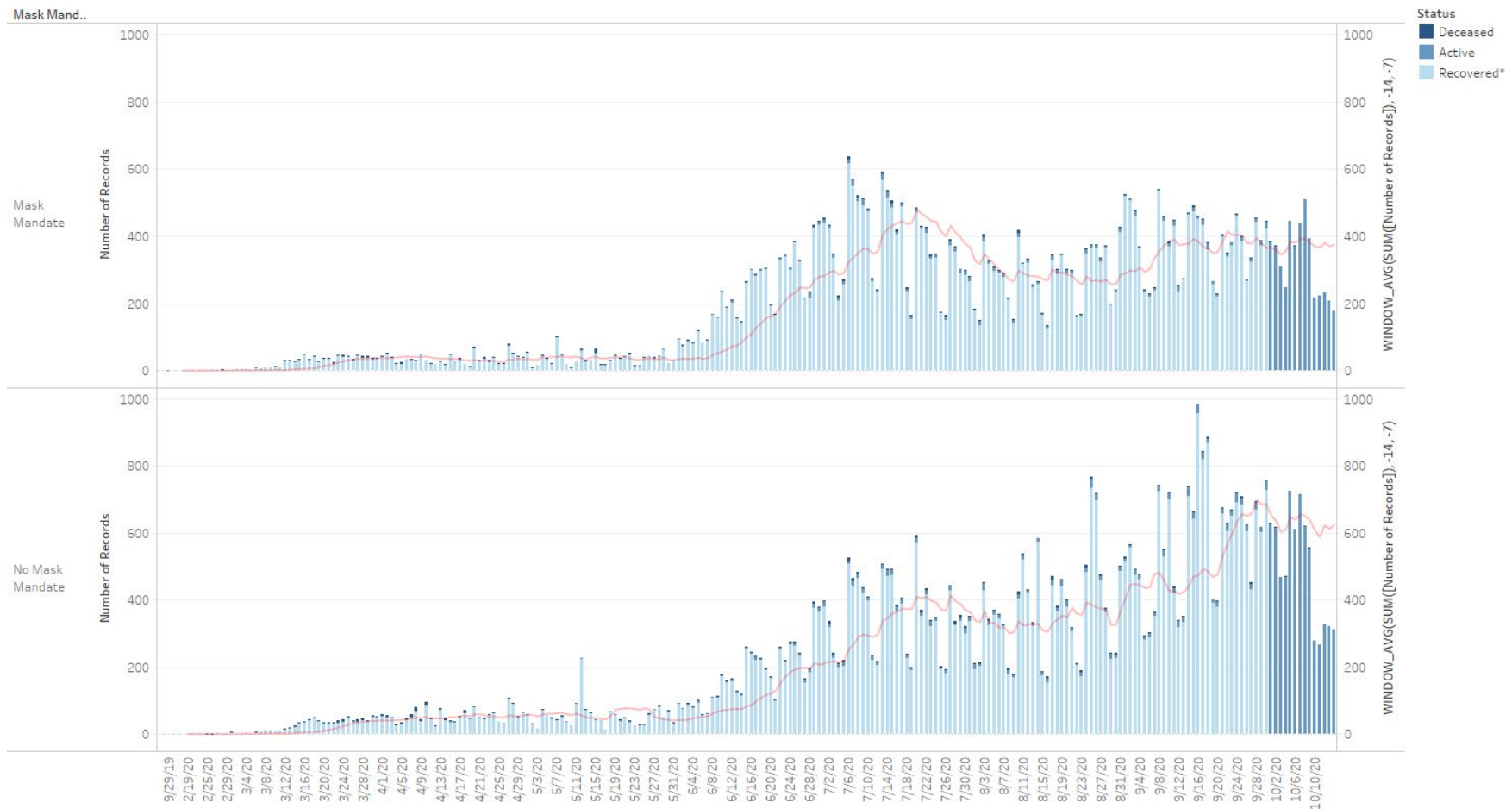
*One case has an unknown age.

IMPACT OF MASK MANDATES

As of 10/15/2020

	7 Day Average Number of Cases by date of Onset* with 7 day lag						Percent Change	Percent Change
	1-Aug	15-Aug	1-Sep	15-Sep	1-Oct	14-Oct	8/1 to 10/14	9/1 to 10/14
Mask	327.9	273	290.1	392.3	366.5	376.5	15%	30%
per 100,000 Pop'l	20.3	16.9	18.0	24.3	22.7	23.4		
No Mask	340.5	309.9	404.9	471	653.8	624.8	83%	54%
per 100,000 Pop'l	14.5	13.2	17.3	20.1	27.9	26.6		

Status by Date of Onset as of 10/15/2020

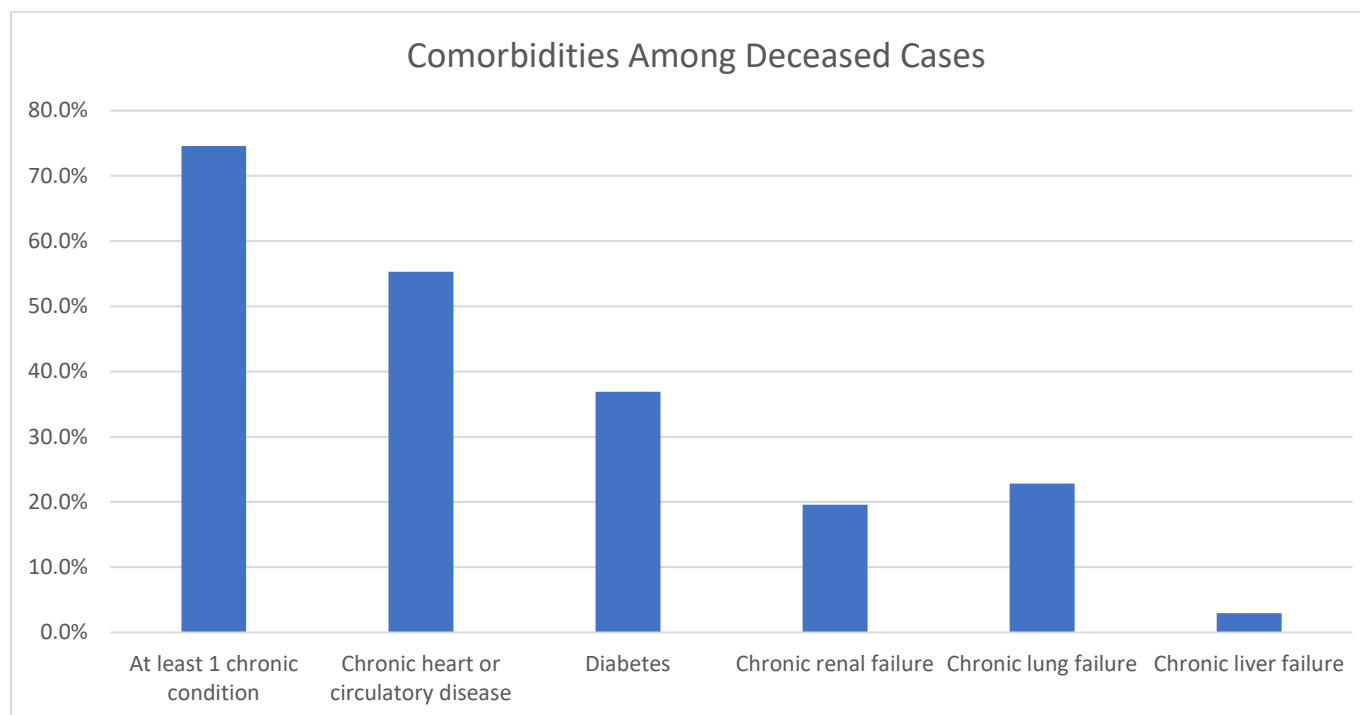


The trends of sum of Number of Records and WINDOW_AVG(SUM([Number of Records]), -14, -7) for Event Dt Day broken down by Mask Mandate. For pane Sum of Number of Records: Color shows details about Status. The view is filtered on Status, which keeps Active, Deceased and Recovered*.

COMORBIDITIES AMONG DECEASED CASES

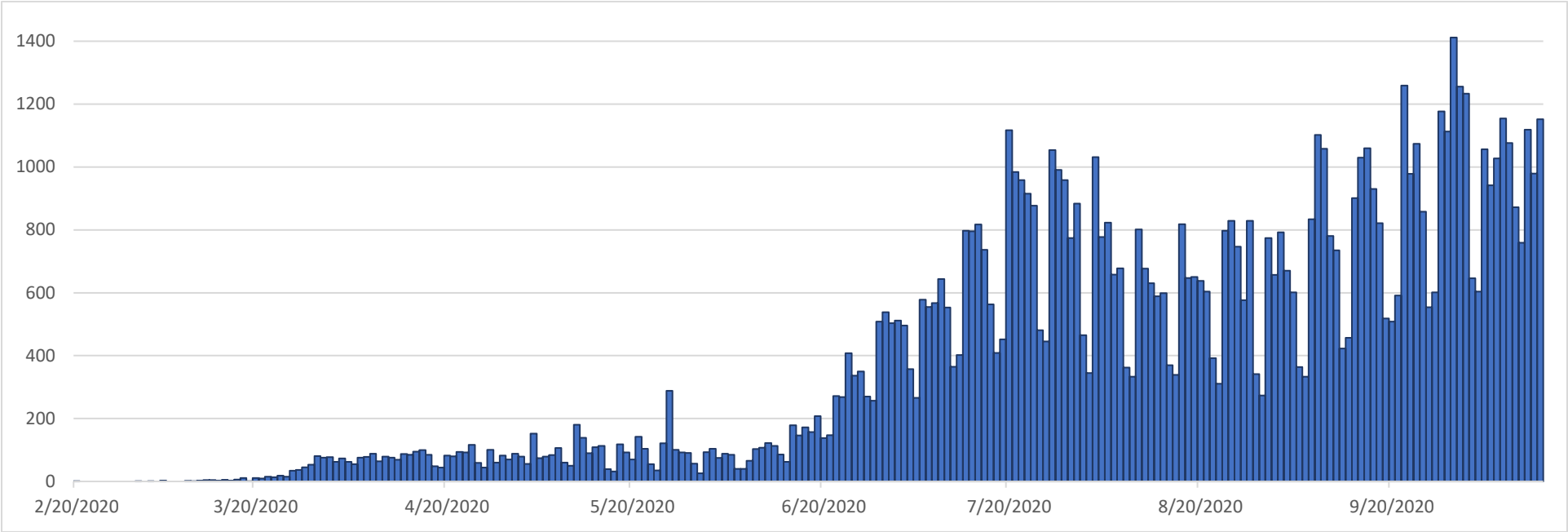
Comorbidities	Number (%)
At least 1 chronic condition*	852 (74.5)
Chronic heart or circulatory disease	594 (55.3)
Diabetes	398 (36.9)
Chronic renal failure	211 (19.6)
Chronic lung failure	250 (22.8)
Chronic liver failure	34 (3.0)

*Chronic conditions include; chronic heart or circulatory disease, diabetes, chronic lung failure, chronic liver failure and renal failure



RECOVERED CASES

Distribution of **recovered cases of COVID-19**, March - October 2020, Oklahoma

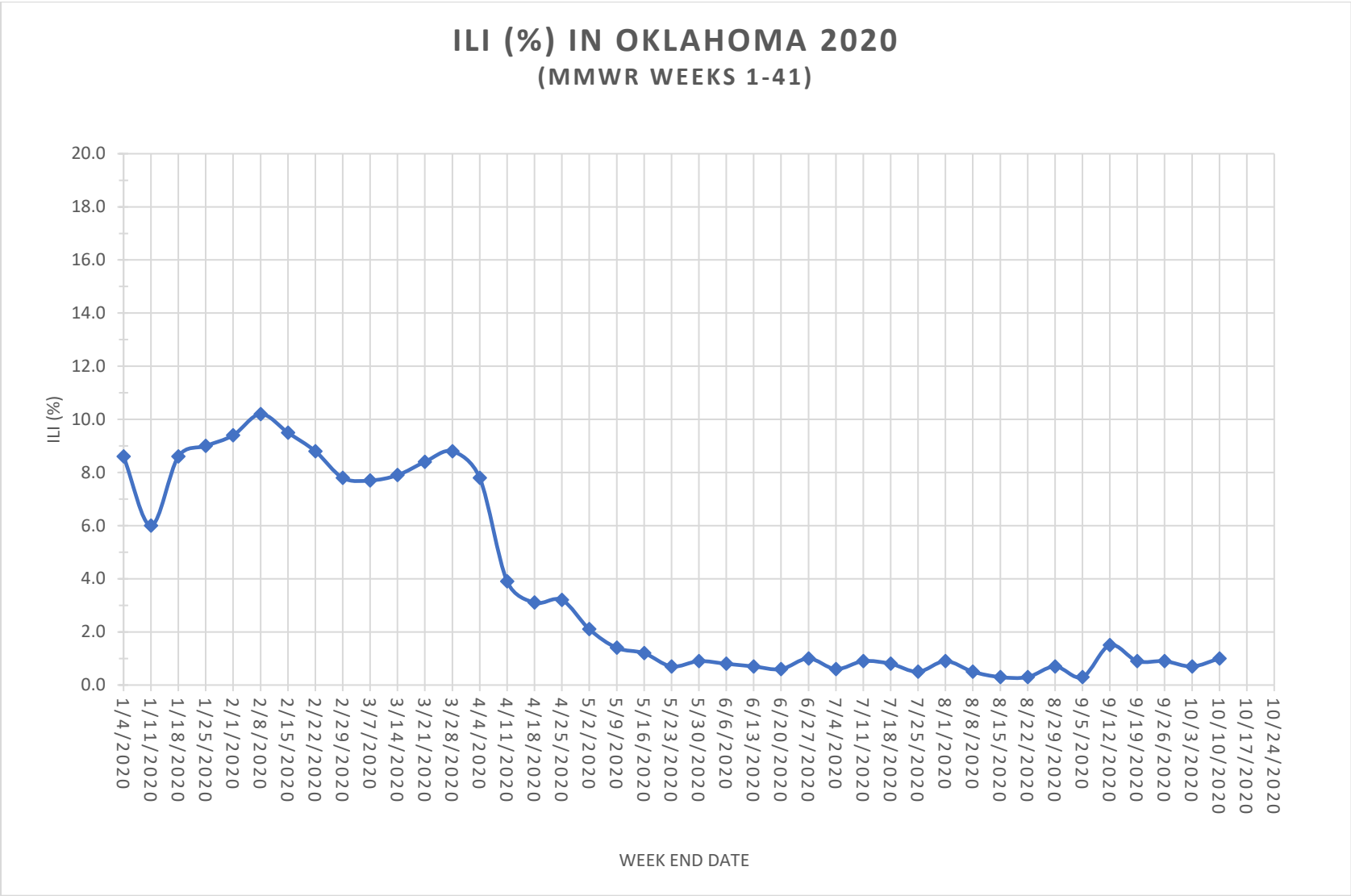


Note: A recovered case is an individual currently not hospitalized or deceased AND 14 days after the onset of symptoms

.....

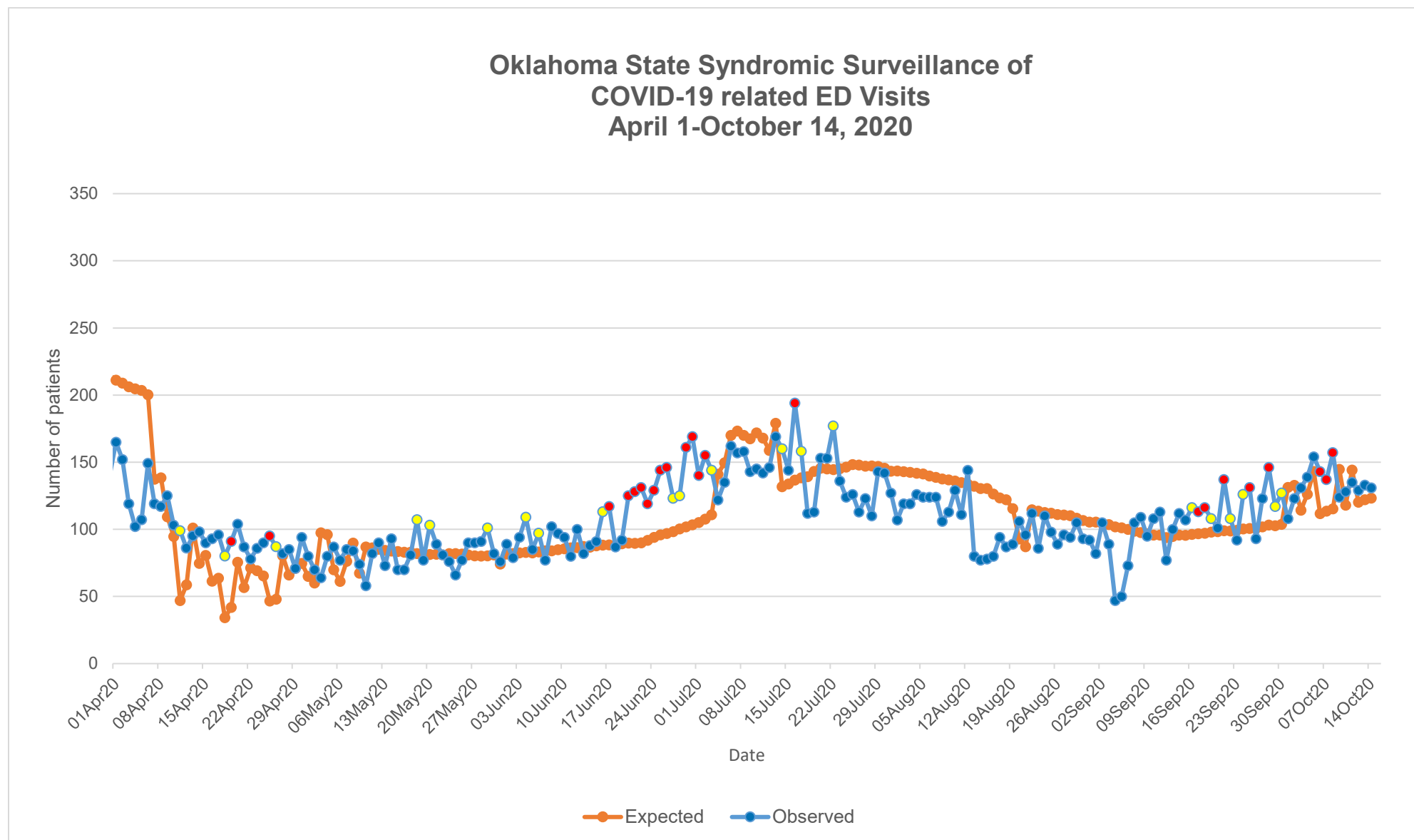
Symptoms Criteria

Weekly percentage of **Influenza-Like Illness (ILI)** (%), Morbidity and Mortality Weekly Report, Oklahoma, Jan–Oct 2020



Interpretation: Data on Influenza-Like Illness increased slightly to 1.0% of outpatient visits exhibiting fever with cough or sore throat. This week’s value of 01.0% is below Oklahoma’s baseline ILI of 3.9%.

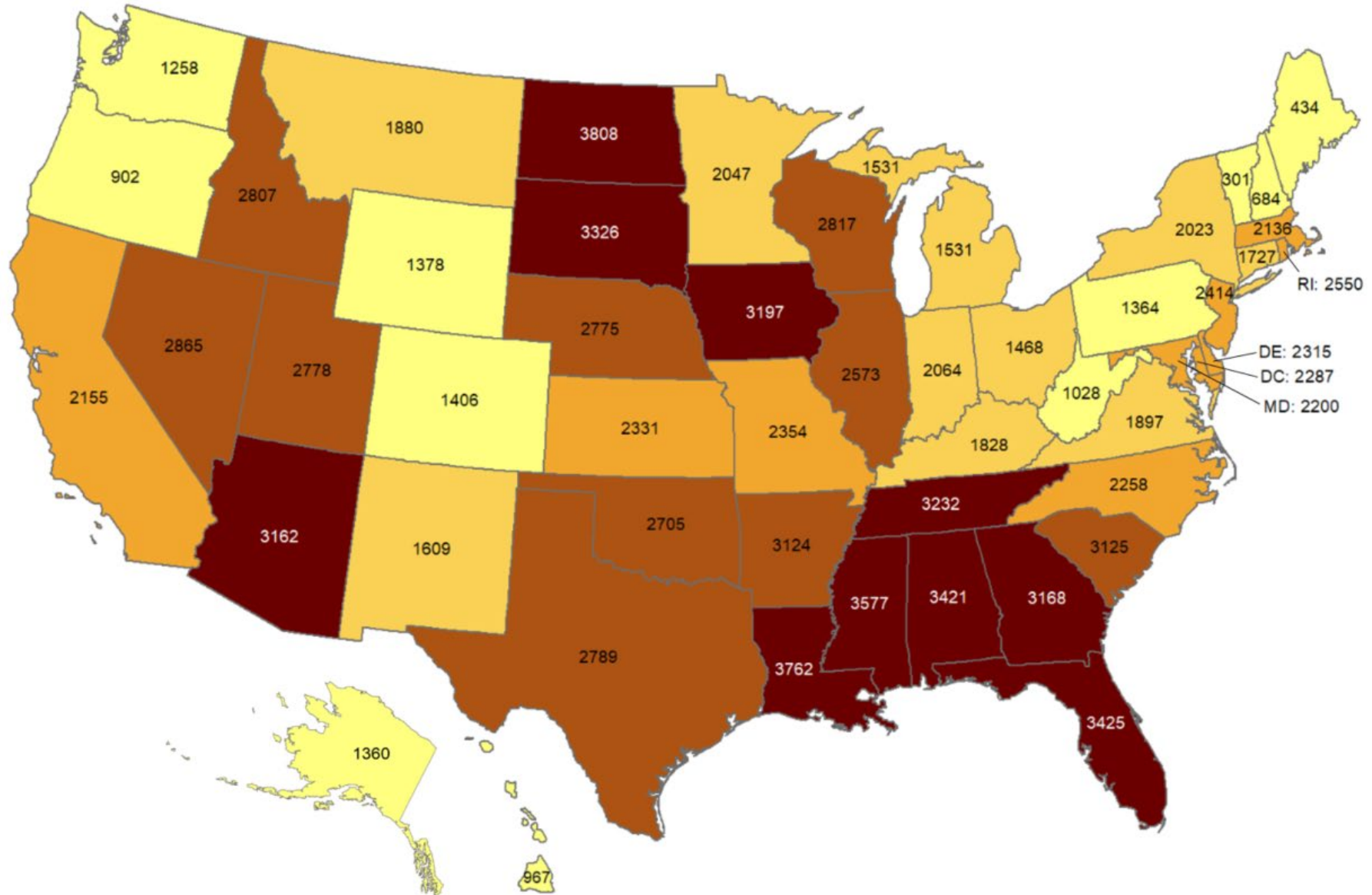
COVID-19 Related Emergency Department Visits



Interpretation: Data from syndromic surveillance shows that the number of COVID-19 related emergency department visits has been significantly higher than the expected value for 3 days in the past 2 weeks as indicated by the red dots on the observed line.

Cumulative incidence of reported COVID-19 cases

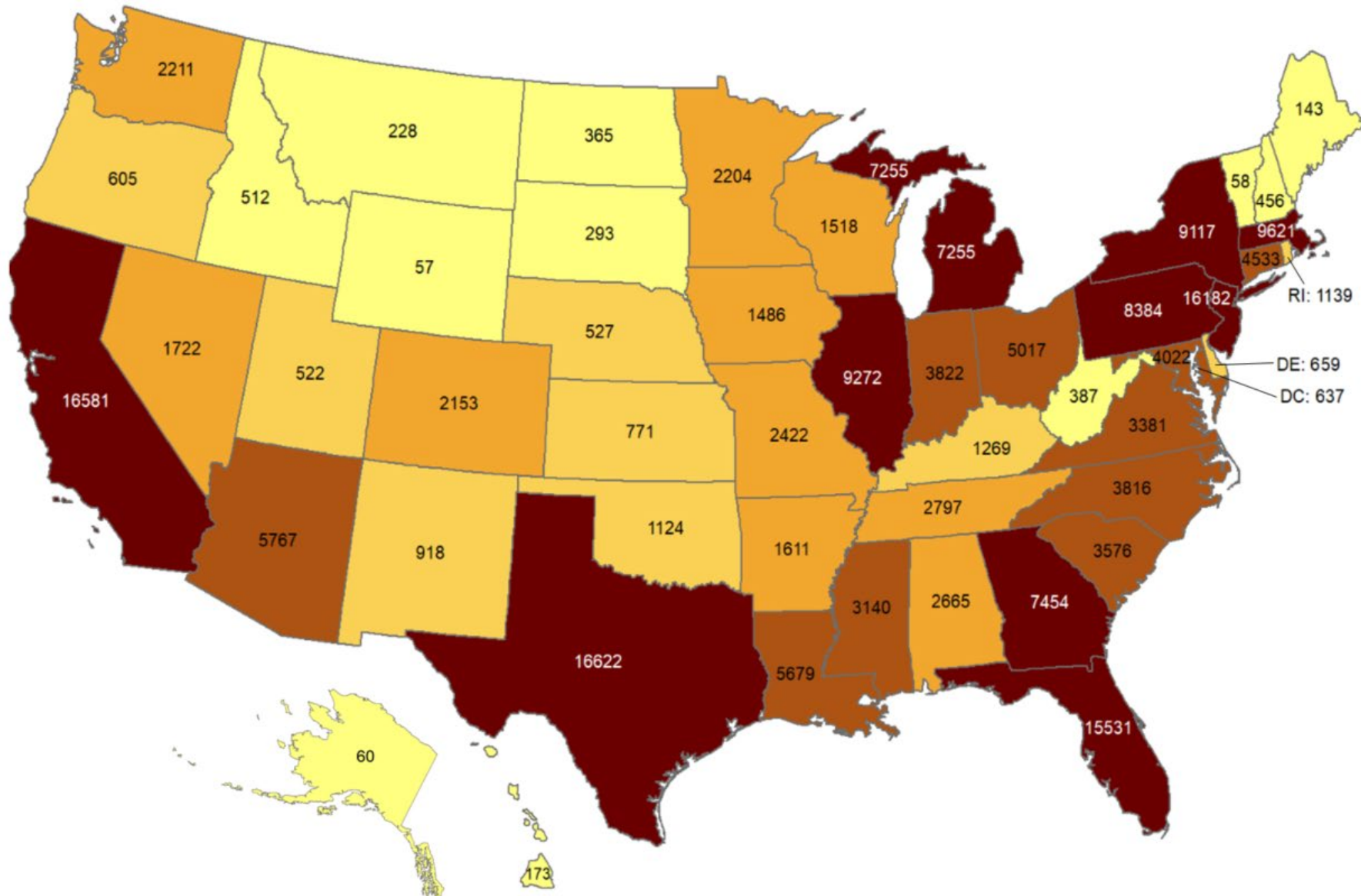
Oklahoma ranks **19** (out of all States and DC) in the cumulative incidence (per 100,000 persons) of reported COVID-19 cases in the US.



Data from CDC. Available at <https://www.cdc.gov/covid-data-tracker/index.html>
Data as of October 14, 2020

Total number of reported COVID-19 deaths

Oklahoma ranks **33** (out of all States and DC) in the total number of reported COVID-19 deaths in the US.



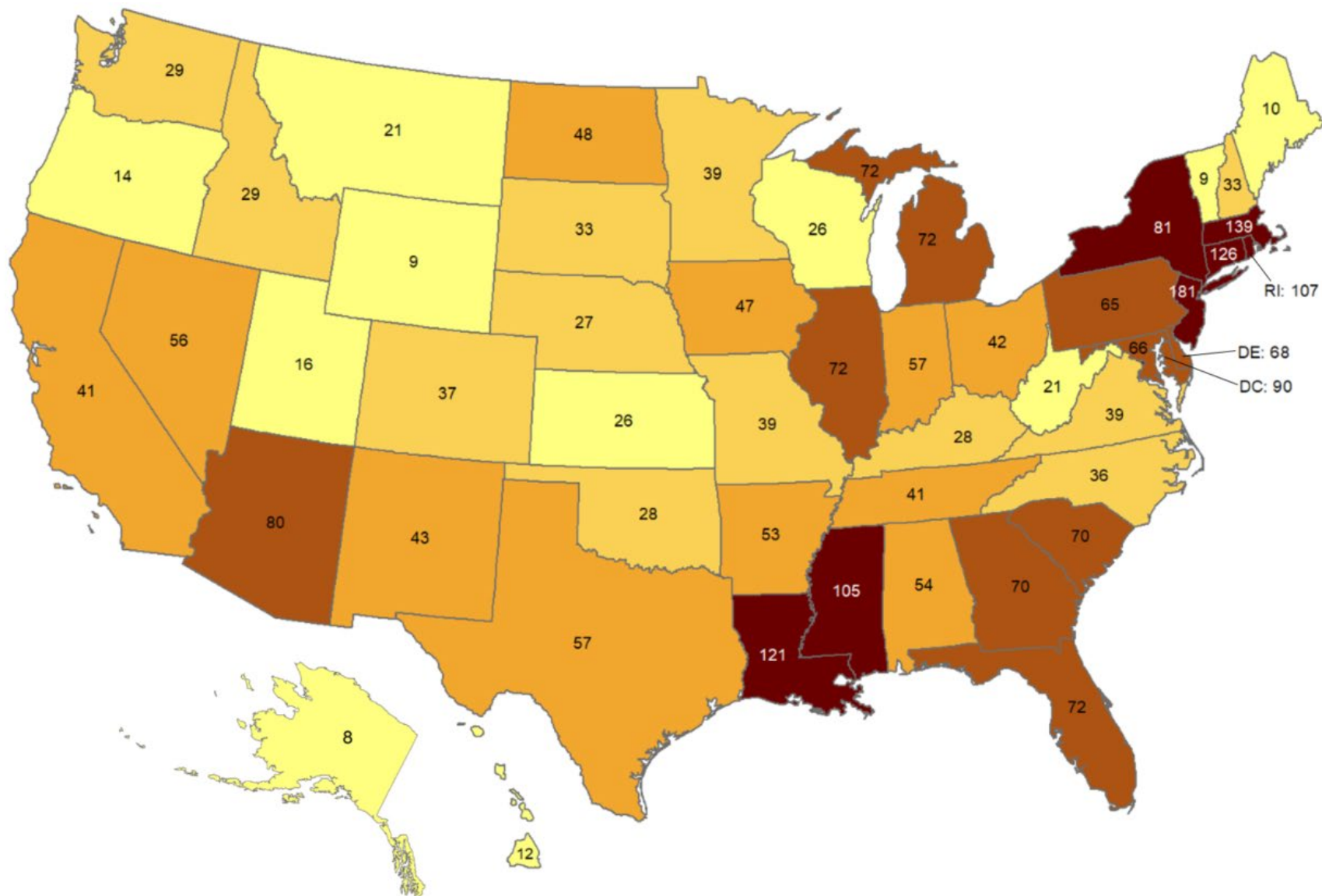
Data from CDC. Available at <https://www.cdc.gov/covid-data-tracker/index.html>

Data as of October 14, 2020

NOTE: CDC numbers include both Confirmed and Probable cases.

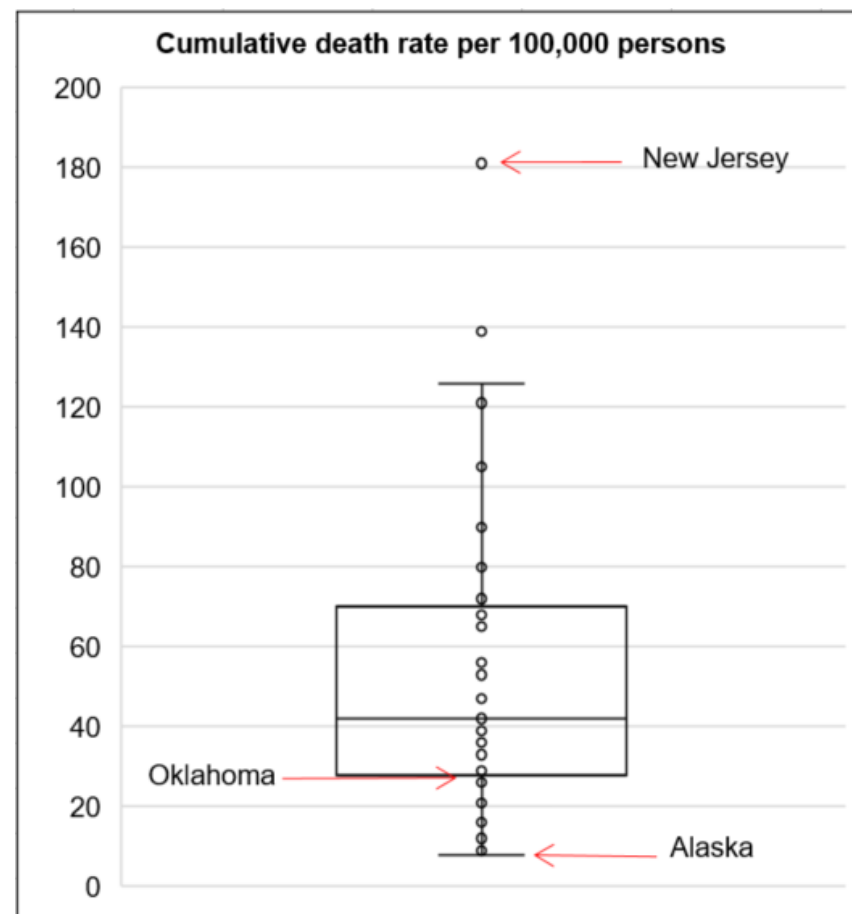
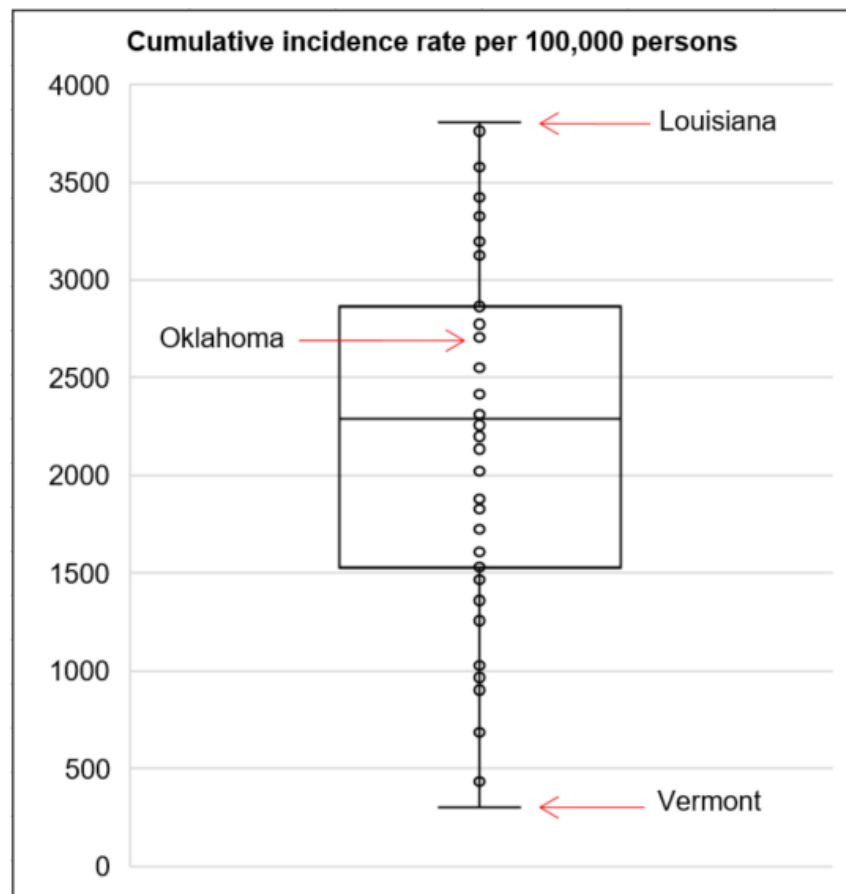
Cumulative death rate of reported COVID-19 cases

Oklahoma ranks **39** (out of all States and DC) in the cumulative death rate (per 100,000 persons) of reported COVID-19 cases in the US.



Data from CDC. Available at <https://www.cdc.gov/covid-data-tracker/index.html>
Data as of October 14, 2020

Cumulative incidence and cumulative death rate of reported COVID-19 cases



Interpretation: Oklahoma has cumulative incidence that is **above the median** of the US and cumulative death rate **below the median** of the US.

.....

ACKNOWLEDGEMENT

The weekly report is made by possible through the efforts of county and city public health and healthcare professionals.

NOTES

Every effort is made to ensure accuracy and the data is up-to-date for the time period reported.
For daily updates on COVID-19, please visit <https://coronavirus.health.ok.gov/>

DISCLAIMER

The purpose of publishing aggregated statistical COVID-19 data through the OSDH Dashboard, the Executive Order Report, and the Weekly Epidemiology and Surveillance Report is to support the needs of the general public in receiving important and necessary information regarding the state of the health and safety of the citizens of Oklahoma. These resources may be used only for statistical purposes and may not be used in any way that would determine the identity of any reported cases.