

# OKLAHOMA COVID-19 WEEKLY REPORT

Weekly Epidemiology and Surveillance Report  
October 3 – 9, 2021



**PURPOSE** To provide up-to-date weekly epidemiological data on COVID-19 in Oklahoma.

## SNAPSHOT

	Oct 3-9	Change <sup>1</sup>	Total
Cases	8,643	-7.3%	627,699
Recovered cases <sup>2</sup>	9,537	-22.9%	606,392
Deaths	189	n/a	9,402

1. Change from the week of September 26 – October 2, 2021.

2. Not deceased and 14 days after symptom onset/specimen collection. Please note that the definition for recovered was changed starting May 4, 2021 due to incomplete data on hospitalization which may result in an inaccurate estimation of the active cases.

CASES		DEATHS	
Persons aged 50 and over	Females	Persons aged 50 and over	Males
<b>32%</b>	<b>53%</b>	<b>93%</b>	<b>56%</b>
of <u>cases</u>	of <u>cases</u>	of <u>deaths</u>	of <u>deaths</u>

## KEY POINTS

- **8,643** cases were reported in the last week  
7.3% decrease from the week before (Sept 26-Oct 2)
- **189** deaths were reported in the past week
- **35,713 (5.7%)** cases have been hospitalized
- **\*13,763** specimens have been tested over the last 7 days according to the CDC COVID data tracker. \*Recent testing data was not available within the most current CDC data.
- **3,516,185** vaccine doses have been administered in total
- The average age of cases was **39** years and average age of individuals who died was **73** years
- The youngest case was **less than a year old** and the oldest case was **100+ years**
- The youngest individual to die from COVID-19 was **less than 15 years** and the oldest was **100+ years**

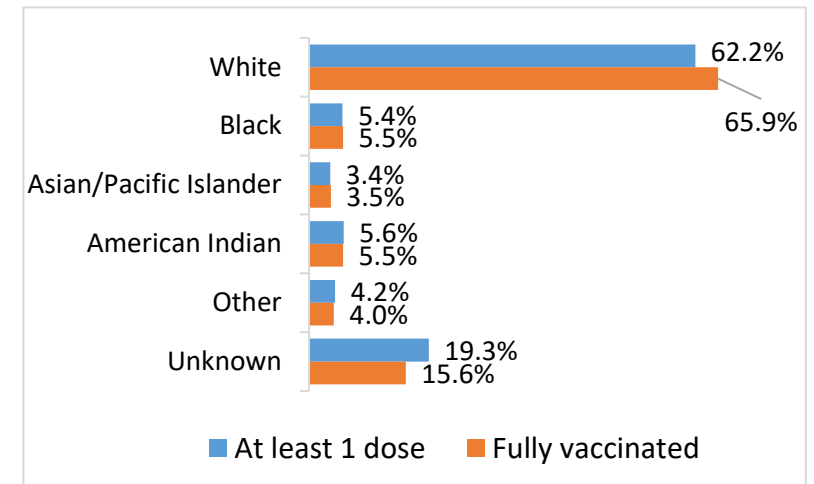
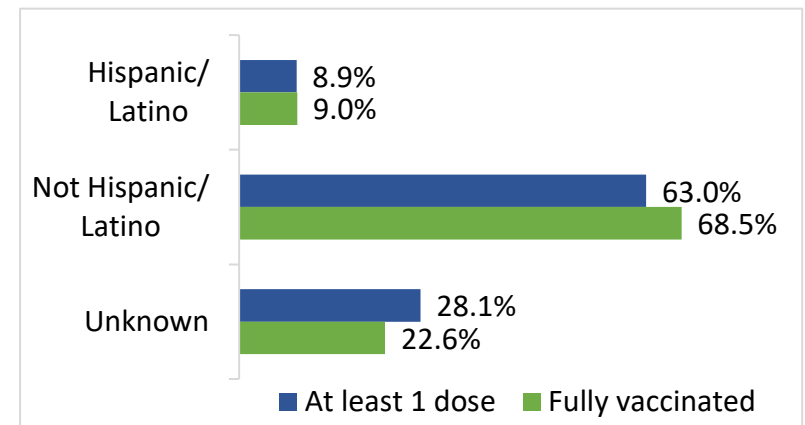
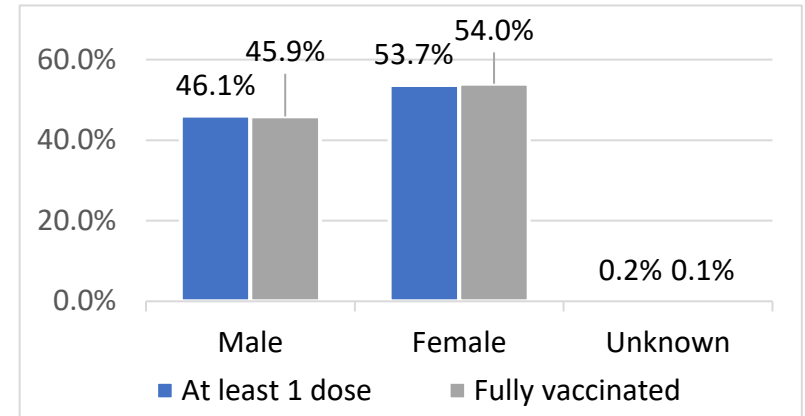
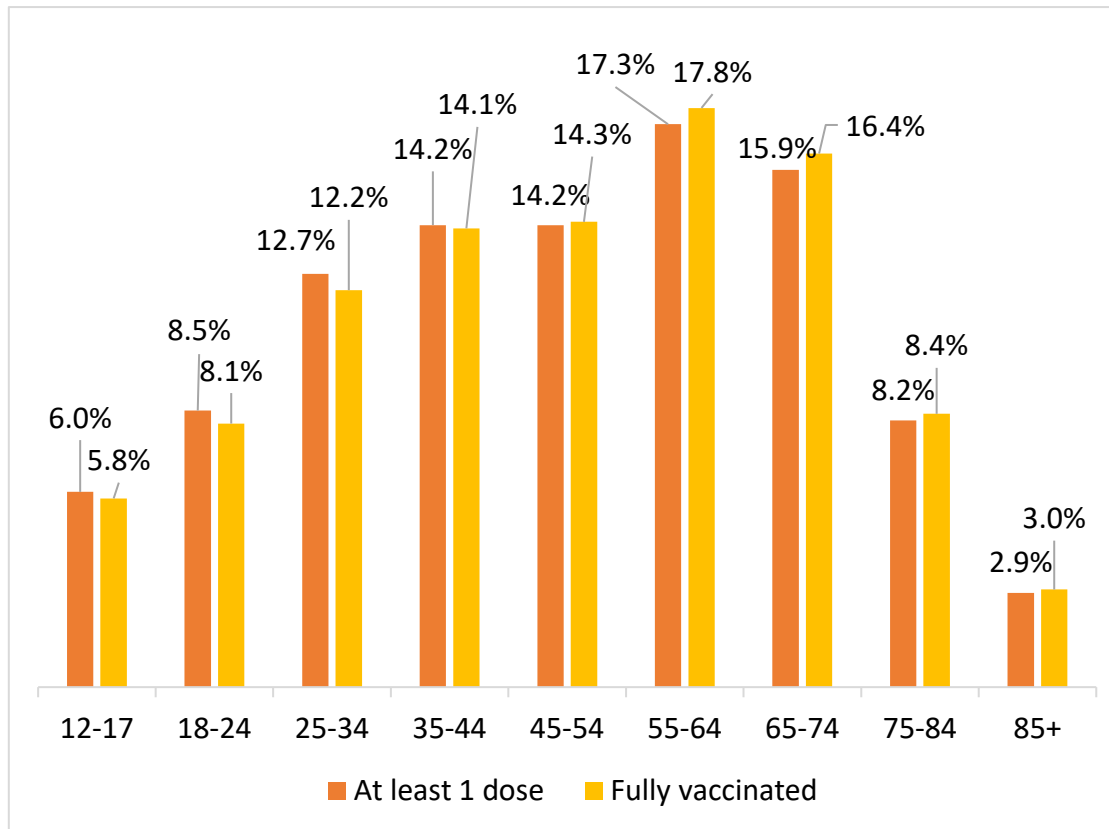
## COVID- 19 VACCINE DATA BY TOTAL AND KEY METRICS

	Oct 5 – Oct 11	Total Number
Doses Administered <sup>1</sup>	55,444	3,516,185
At least 1 dose <sup>2</sup>	14,705	1,889,982
Fully vaccinated <sup>3</sup>	16,803	1,628,309

1. Doses administered amount does not include doses administered by federal entities in Oklahoma.

2. At least one does refers to individuals receiving Pfizer and Moderna COVID-19 vaccines and/or receiving single shot of J&J/Janssen Vaccine.

3. Fully vaccinated refers to individuals fully vaccinated after receiving either Pfizer and/or Moderna COVID-19 vaccines (both doses) and/or receiving single shot of J&J/Janssen Vaccine.



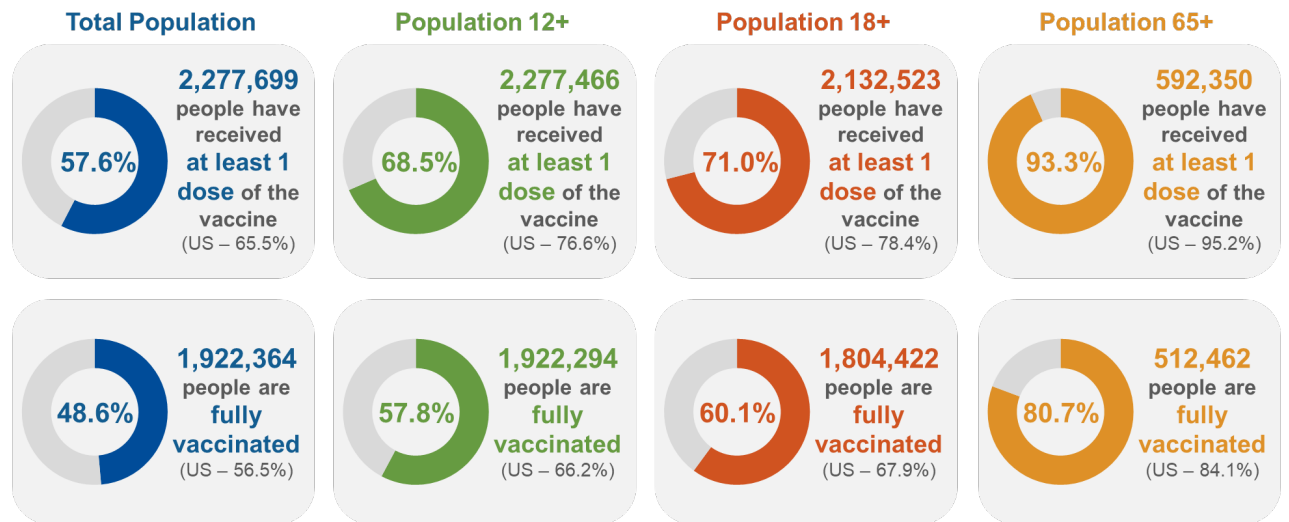
Source: COVID-19 Vaccination Reporting Specification Dataset Oklahoma State Immunization

Information System (OSIIS). Data reflect information entered as of 11:59PM 10/11/2021. Data does not include doses administered by federal entities in Oklahoma

# COVID-19 VACCINATIONS IN OKLAHOMA - FEDERAL AND STATE, AS OF OCTOBER 12, 2021

	Count*	Adult Rate per 100K
Total Doses Administered	4,282,557	133,688
Additional doses (booster/3rd) Administered	115,611	na

\*Includes state and federal administered doses.



## Percent of 12+ Population with At Least 1 Dose- Oklahoma Counties

County	At Least 1 Dose (%)	County	At Least 1 Dose (%)	County	At Least 1 Dose (%)	County	At Least 1 Dose (%)	County	At Least 1 Dose (%)
Adair	48.0%	Cotton	55.5%	Jackson	64.0%	McIntosh	63.9%	Roger Mills	41.5%
Alfalfa	52.0%	Craig	64.5%	Jefferson	49.6%	Murray	53.0%	Rogers	54.6%
Atoka	40.6%	Creek	51.7%	Johnston	50.6%	Muskogee	64.9%	Seminole	63.2%
Beaver	36.3%	Custer	59.5%	Kay	51.8%	Noble	74.6%	Sequoyah	48.0%
Beckham	50.1%	Delaware	47.9%	Kingfisher	58.5%	Nowata	53.4%	Stephens	57.7%
Blaine	56.8%	Dewey	31.1%	Kiowa	63.2%	Okfuskee	54.6%	Texas	53.6%
Bryan	45.7%	Ellis	41.2%	Latimer	39.2%	Oklahoma	79.4%	Tillman	56.7%
Caddo	75.9%	Garfield	60.7%	LeFlore	46.1%	Okmulgee	51.2%	Tulsa	74.4%
Canadian	69.9%	Garvin	57.0%	Lincoln	48.1%	Osage	41.7%	Wagoner	56.3%
Carter	54.8%	Grady	44.9%	Logan	40.1%	Ottawa	47.5%	Washington	54.0%
Cherokee	58.0%	Grant	52.9%	Love	50.6%	Pawnee	59.3%	Washita	48.7%
Choctaw	40.3%	Greer	42.6%	Major	59.2%	Payne	56.8%	Woods	48.5%
Cimarron	35.0%	Harmon	58.2%	Marshall	55.2%	Pittsburg	54.1%	Woodward	45.9%
Cleveland	62.7%	Harper	53.1%	Mayes	53.8%	Pontotoc	63.8%		
Coal	46.7%	Haskell	48.6%	McClain	58.5%	Pottawatomie	57.6%		
Comanche	73.1%	Hughes	54.0%	McCurtain	43.7%	Pushmataha	40.1%		

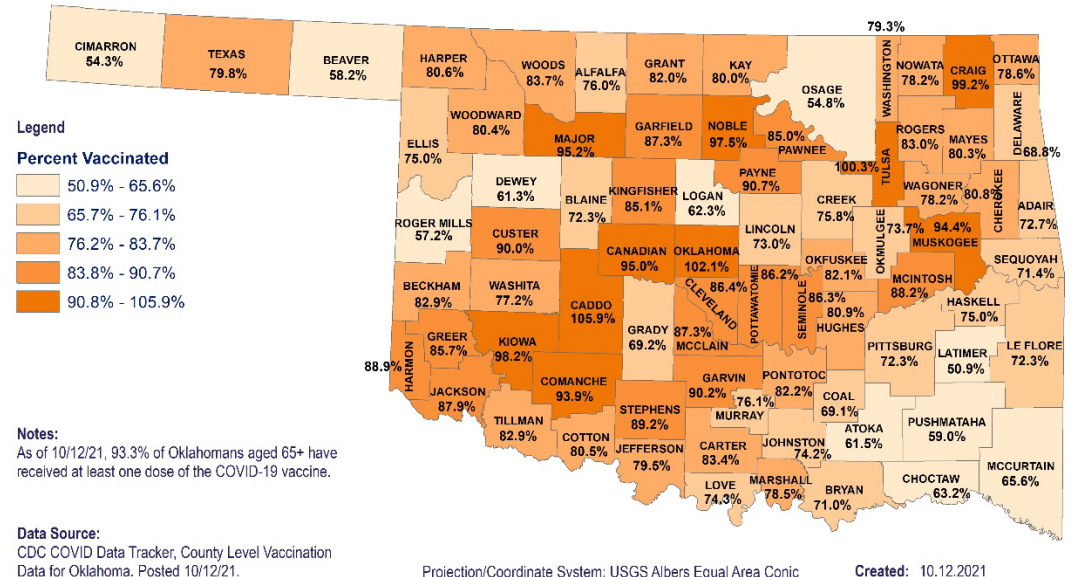
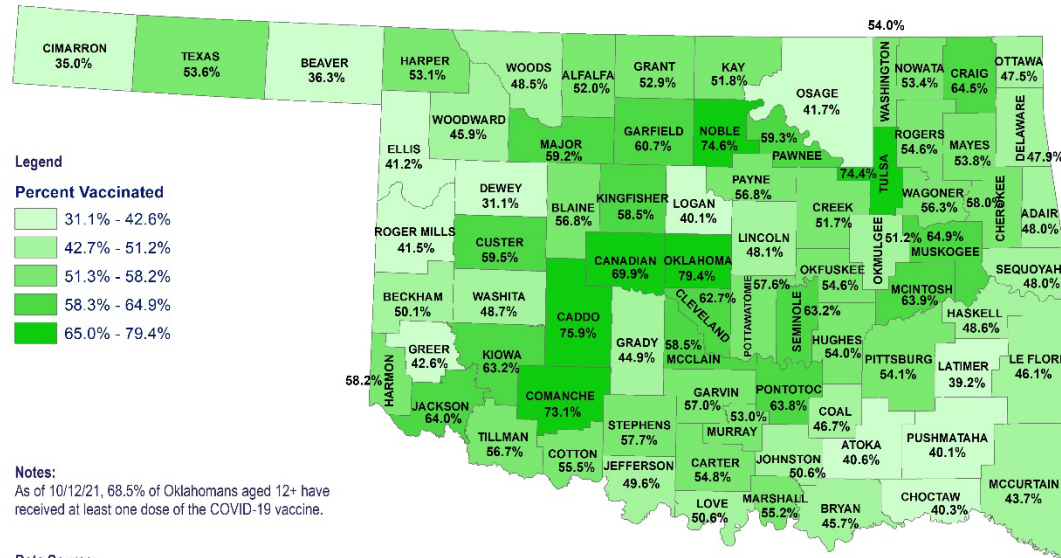
Source: CDC COVID Data Tracker – COVID-19 Vaccinations in the United States and COVID-19 Integrated County View. Posted: 10/12/2021

## COVID- 19 VACCINE DATA

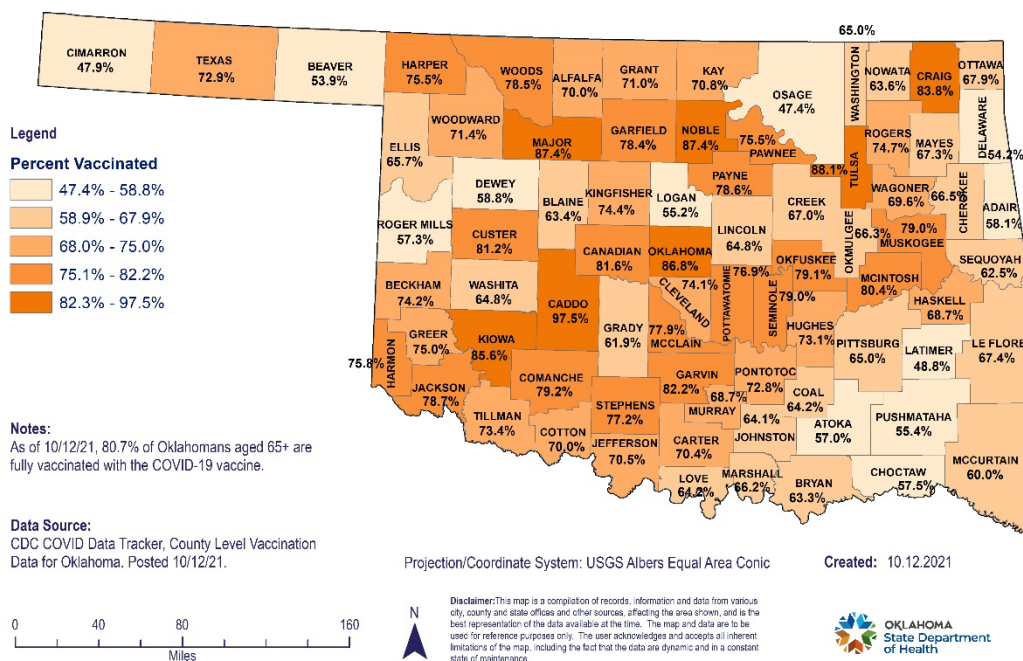
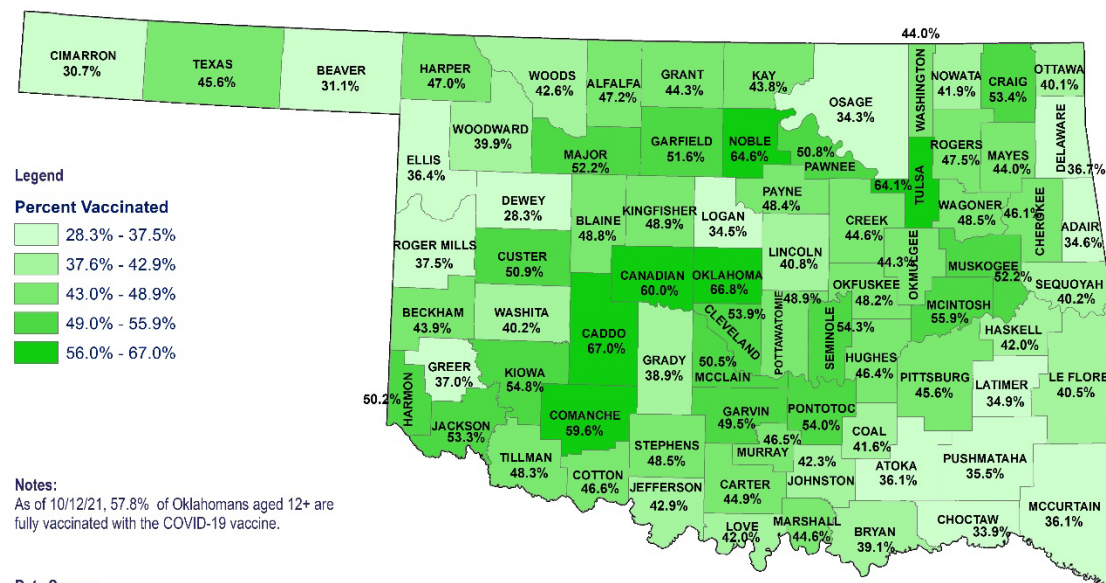
		Total Population >12 years of age	People who received at least 1 dose	People who are fully vaccinated
<b>Oklahoma</b>		3,325,223	1,889,982 (56.8%)	1,628,309 (49.0%)
<b>Gender</b>				
	Male	1,637,286 (49.2%)	872,351 (53.3%)	746,658 (45.6%)
	Female	1,687,937 (50.8%)	1,014,814 (60.1%)	879,845 (52.1%)
	Unknown		2,817	1,806
<b>Age group</b>				
	12-17	320,490 (9.6%)	114,295 (35.7%)	94,494 (29.5%)
	18-24	380,905 (11.5%)	161,469 (42.4%)	132,155 (34.7%)
	25-34	543,593 (16.3%)	239,946 (44.1%)	199,269 (36.7%)
	35-44	497,873 (15.0%)	268,162 (53.9%)	228,890 (46.0%)
	45-54	453,536 (13.6%)	267,938 (59.1%)	232,066 (51.2%)
	55-64	493,694 (14.8%)	327,807 (66.4%)	289,218 (58.6%)
	65-74	368,050 (11.1%)	300,792 (81.7%)	267,240 (72.6%)
	75-84	192,919 (5.8%)	154,300 (80.0%)	136,870 (70.9%)
	85+	74,163 (2.2%)	55,164 (74.4%)	48,081 (64.8%)
<b>Race</b>				
	White	2,610,851 (78.5%)	1,174,402 (45.0%)	1,072,478 (41.1%)
	Black	282,592 (8.5%)	102,813 (36.4%)	90,049 (31.9%)
	Asian/PI	94,874 (2.9%)	64,093 (67.6%)	57,556 (60.7%)
	American Indian	336,906 (10.1%)	104,897 (31.1%)	89,810 (26.7%)
	Other	-	78,548	65,532
	Unknown	-	365,229	252,884
<b>Ethnicity</b>				
	Hispanic or Latino	323,153 (9.7%)	167,541 (51.8%)	145,863 (45.1%)
	Not Hispanic or Latino	3,002,070 (90.3%)	1,191,071 (39.7%)	1,114,891 (37.1%)
	Unknown	-	531,370	367,555

Note: Fully vaccinated refers to individuals completing series after receiving either Pfizer and/or Moderna COVID-19 vaccines (both doses) and/or receiving single shot of J&J/Janssen Vaccine  
Data Source: 1. Single-race Population Estimates, United States, 2010-2019. July 1st resident population by state, age, sex, single-race, and Hispanic origin, on CDC WONDER Online Database. Vintage 2019 estimates released by U.S. Census Bureau on June 25, 2020 COVID-19. 2. Vaccination Reporting Specification (CVRS) Dataset - Oklahoma State Immunization Information System (OSIIS); Data reflect information entered as of 11:59PM 10/11/2021. Data does not include doses administered by federal entities in Oklahoma

# OKLAHOMA COVID-19 AT LEAST 1 DOSE COUNTY LEVEL VACCINE ADMINISTRATION FOR AGES 12+ AND 65+



# OKLAHOMA COVID-19 FULLY VACCINATED COUNTY LEVEL VACCINE ADMINISTRATION FOR AGES 12+ AND 65+

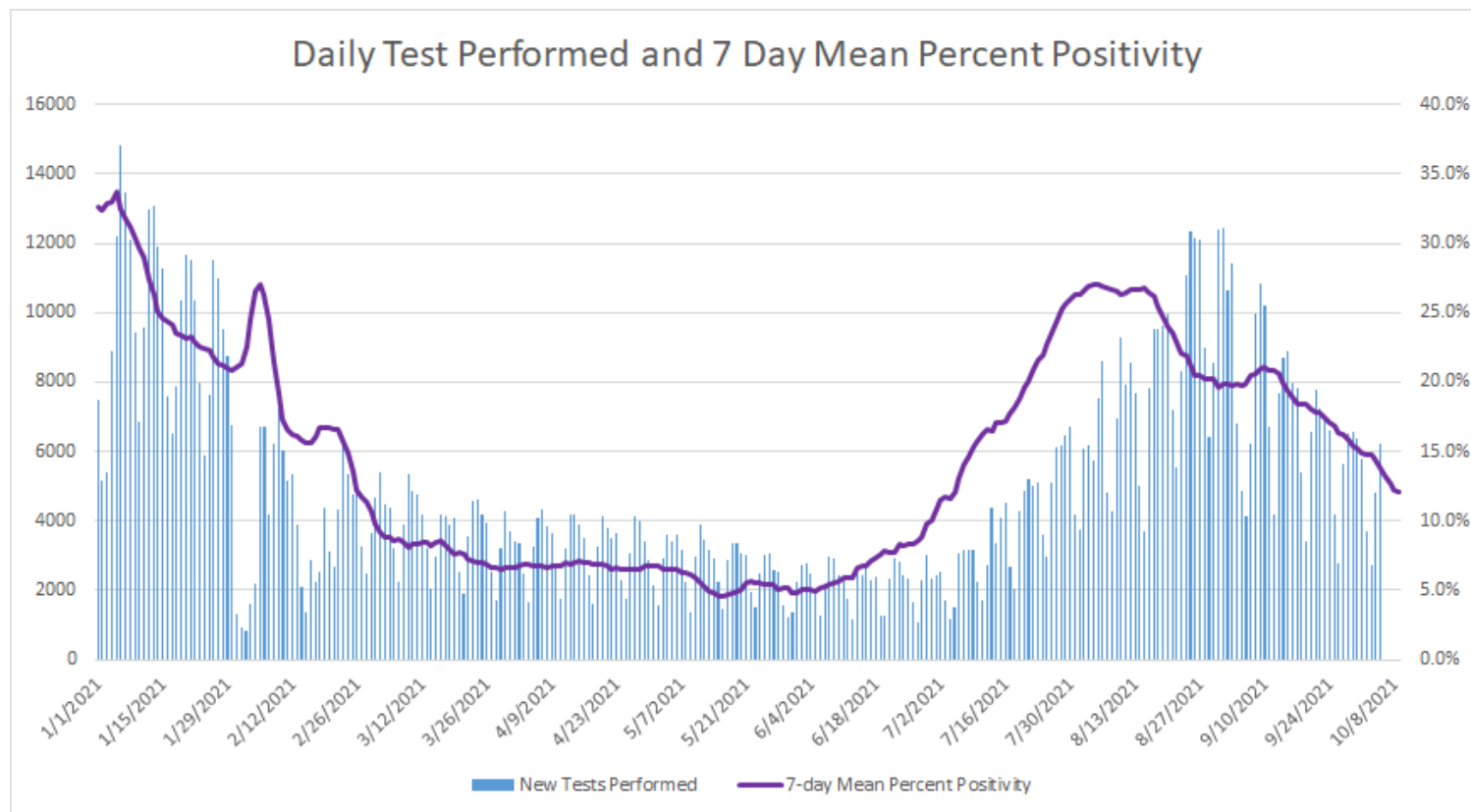


## DISEASE TESTING

Oct 03– Oct 09	
Specimens tested, count	13,763*
Specimens positive, count	8,906
Percent positive	12.1

Source: CDC COVID Data Tracker CDC | Data as of: Tuesday, October 12, 2021 1:16 PM ET. Posted: Tuesday, October 12, 2021 2:51 PM ET  
 \*(Recent testing data was not available within the most current CDC data.)

## COVID-19 DAILY TESTS PERFORMED AND 7 DAY MEAN PERCENT POSITIVITY



Oklahoma, October 12, 2021

Source: CDC COVID Data Tracker CDC | Data as of: Tuesday, October 12, 2021 1:16 PM ET. Posted: Tuesday, October 12, 2021 2:51 PM ET  
 (Recent testing data was not available within the most current CDC data.)

## COVID-19 VARIANT STRAINS

Genetic variants of SARS-CoV-2 have been emerging and circulating around the world throughout the COVID-19 pandemic.

- A variant has one or more mutations that differentiate it from other variants in circulation. As expected, multiple variants of SARS-CoV-2 have been documented in the United States and globally throughout this pandemic.

SARS-CoV-2 Sequencing Data, Oklahoma, January 1, 2021-October 11, 2021		
Variant Designation and Strain Name	SARS-CoV-2 Strain Count	SARS-CoV-2 Strain Percentage
No Concern	380	5.7%
Variants of Concern	5,685	85.1%
B.1.617.2 (Delta)	5,685	100.0%
Variants to Watch	47	0.7%
C.37 (Lambda)	47	100.0%
Variants Being Monitored	570	8.5%
B.1.1.7 (Alpha)	471	82.6%
B.1.351 (Beta)	7	1.2%
B.1.427/429 (Epsilon)	24	4.2%
B.1.525 (Eta)	2	0.4%
P.1 (Gamma)	35	6.1%
B.1.526/526.1 (Iota)	15	2.6%
B.1.617.1 (Kappa)	1	0.2%
B.1.621 (Mu)	15	2.6%
Grand Total	6,682	100.0%

Additional information on variant classifications and definitions can be found [here](#).

## COVID-19 VACCINE BREAKTHROUGH INFECTIONS IN OKLAHOMA

- Total Number Reported Vaccine Breakthrough Cases: 12,790

### VACCINE BREAKTHROUGH CASES, HOSPITALIZATIONS AND DEATHS BY VACCINE TYPE AS OF OCT 11, 2021

Vaccine Brand	Number of Fully Vaccinated OK Residents*	Number of Vaccine Breakthrough Cases**	Cumulative Breakthrough Incidence Rate Per 100,000 Fully Vaccinated OK Residents	Hospitalizations	Deaths
Johnson and Johnson	120,432	1,297	1077.0	84	18
Moderna	764,996	4,244	554.8	225	50
Pfizer	1,029,816	7,249	703.9	426	92
Total	1,915,244	12,790	667.8	735	160

\*Vaccine Denominator: Represents the number of people who have received the second dose in a two-dose COVID-19 vaccine series or one dose of the single-shot Johnson and Johnson's Janssen COVID-19 vaccine.

\*\*Vaccine breakthrough cases is defined as an individual with a COVID-19 positive laboratory results (PCR/Antigen) and documentation of COVID-19 vaccination that meets the definition of fully vaccinated. (Individuals are considered fully vaccinated  $\geq 2$  weeks after receiving the last dose in the COVID-19 vaccine series.)

Source: CDC COVID Data Tracker—COVID-19 Vaccinations in the United States. Accessed: 10/11/21

## PROPORTION OF BREAKTHROUGH CASES BY MONTH OF ONSET AS OF OCTOBER 11, 2021

Month	Breakthrough Cases**	Unvaccinated Cases	Total	Percent of Cases Vaccinated	Percent of Cases Unvaccinated
February 2021	7	23,342	23,349	0.0%	100.0%
March 2021	41	9,130	9,171	0.4%	99.6%
April 2021	195	6,615	6,810	2.9%	97.1%
May 2021	261	4,220	4,481	5.8%	94.2%
June 2021	447	5,692	6,139	7.3%	92.7%
July 2021	2,638	29,330	31,968	8.3%	91.7%
August 2021	4,298	73,325	77,623	5.5%	94.5%
September 2021	4,243	47,039	51,282	8.3%	91.7%
October 2021	660	6,078	6738	9.8%	90.2%

\*\*Vaccine breakthrough case is defined as an individual with a COVID-19 positive laboratory results (PCR/Antigen) and documentation of COVID-19 vaccination that meets the definition of fully vaccinated. (Individuals are considered fully vaccinated  $\geq 2$  weeks after receiving the last dose in the COVID-19 vaccine series.)

## COVID-19 REINFECTIONS\* AND BREAKTHROUGH CASES\*\* BY MONTH AS OF OCT 11, 2021

Month	Approximate Number of Cases Eligible for Reinfection	Reinfection Cases to Date by Month	Reinfection Rate per 100,000 Eligible Cases	Oklahoma's Fully Vaccinated Population Eligible for a Breakthrough Case	Breakthrough Cases to Date by Month	Breakthrough Rate per 100,000 Fully Vaccinated	Reinfection to Breakthrough Rate Ratio
May 2021	410,225	1,469	358.1	1,335,445	504	37.7	9.49
June 2021	433,584	1,598	368.6	1,518,992	951	62.6	5.89
July 2021	442,655	2,270	512.8	1,593,194	3,589	225.3	2.28
August 2021	449,465	4,028	896.2	1,734,367	7,887	454.7	1.97
September 2021	453,946	5,229	1,151.9	1,883,414	12,130	644.0	1.79
October 2021	460,085	5,369	1,167.0	1,915,359	12,790	667.8	1.75

\*For a case to be a reinfection, the cases must have happened at least 90 days apart.

\*\*Vaccine breakthrough case is defined as an individual with a COVID-19 positive laboratory results (PCR/Antigen) and documentation of COVID-19 vaccination that meets the definition of fully vaccinated. (Individuals are considered fully vaccinated  $\geq 2$  weeks after receiving the last dose in the COVID-19 vaccine series.)

## DISTRIBUTION OF RECENT COVID-19 HOSPITAL ADMISSIONS BY VACCINATION STATUS AND AGE GROUP AS OF OCTOBER 11, 2021

Vaccination Status	Age Group	Hospital Admissions in the last 30 days***	Percentage within Vaccination Status Category	Percentage of Total Hospitalizations
Non-Vaccinated	Under 1- 4	38	2.4%	2.1%
	5-17	33	2.1%	1.8%
	18-35	213	13.3%	11.5%
	36-49	288	18.0%	15.5%
	50-64	426	26.7%	23.0%
	65+	598	37.5%	32.3%
	Unknown	0	0.0%	0.0%
	Total	1,596	100.0%	86.1%
Fully Vaccinated*	5-17	1	0.5%	0.1%
	18-35	7	3.4%	0.4%
	36-49	9	4.4%	0.5%
	50-64	40	19.7%	2.2%
	65+	146	71.9%	7.9%
	Total	203	100.0%	11.0%
Partially Vaccinated**	5-17	0	0.0%	0.0%
	18-35	4	7.4%	0.2%
	36-49	2	3.7%	0.1%
	50-64	19	35.2%	1.0%
	65+	29	53.7%	1.6%
	Total	54	100.0%	2.9%
Total Hospitalizations	1,853			

\*Fully Vaccinated Vaccine breakthrough cases are defined as an individual with a COVID-19 positive laboratory results (PCR/Antigen) and documentation of COVID-19 vaccination that meets the definition of fully vaccinated. (Individuals are considered fully vaccinated  $\geq 2$  weeks after receiving the last dose in the COVID-19 vaccine series.)

\*\*Partially Vaccinated Vaccine breakthrough cases is defined as an individual with a COVID-19 positive laboratory result (PCR/Antigen) and documentation of one COVID-19 vaccination. (Individuals are considered partially vaccinated  $\geq 2$  weeks after receiving the first dose in a 2-dose COVID-19 vaccine series.)

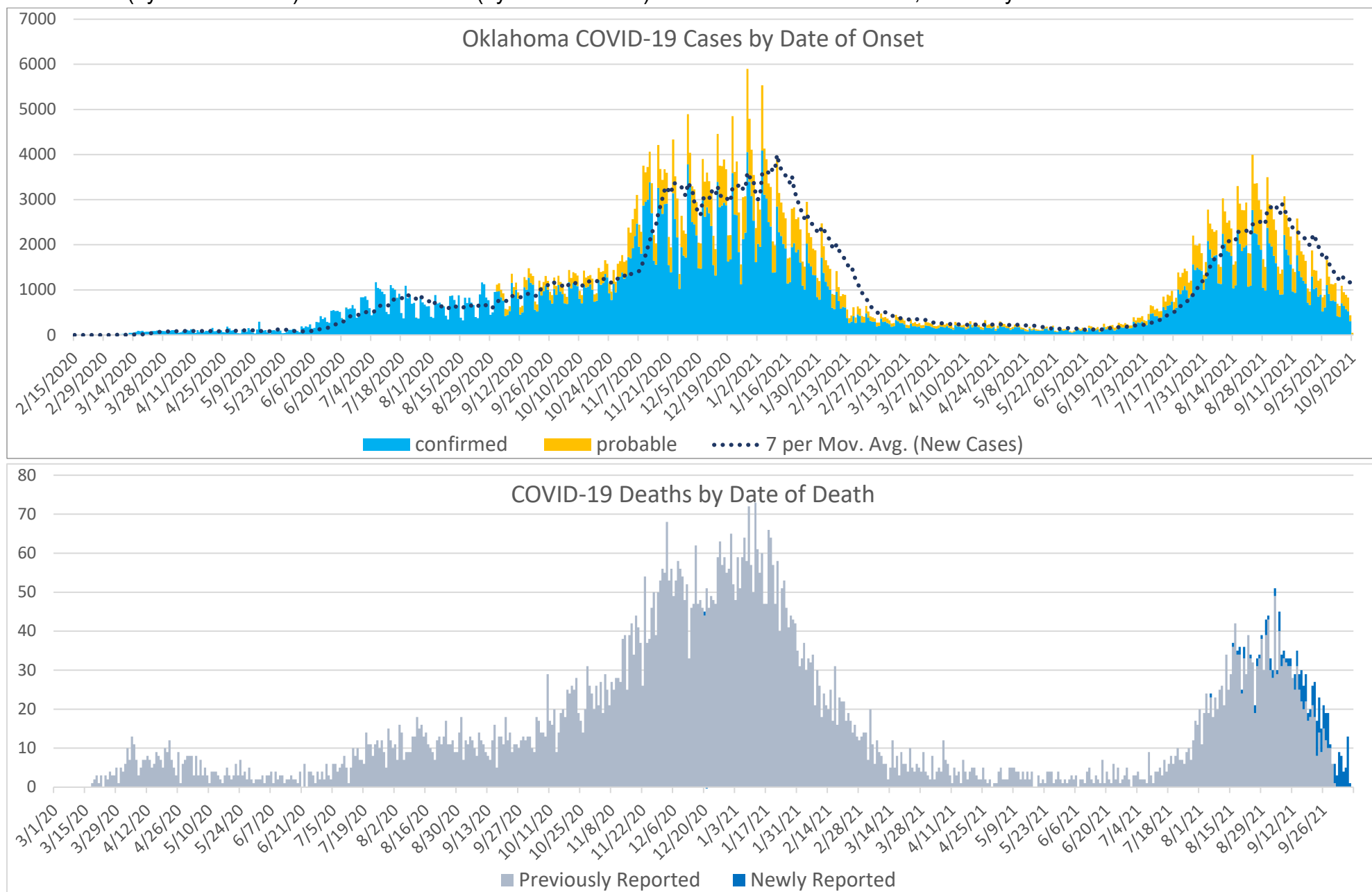
\*\*\*Numbers based on hospital admission date within the past 30 days.

## EPIDEMIOLOGICAL ESTIMATES

	Estimate	Notes / Interpretation
<b>Cases</b>		
Cumulative incidence	15,863.1 (per 100,000 persons)	From March 7, 2020 to October 9, 2021 there were about 15,863 (per 100,000) new cases of COVID-19 in Oklahoma.
Absolute change in cumulative incidence from previous week	-17.1 (per 100,000 persons)	Compared to September 26 - October 2 there were 17.1 (per 100,000) less cases of COVID-19 reported in Oklahoma during the past week (October 3 - October 9).
<b>Disease Severity</b>		
Case-fatality risk (crude)	1.5%	The estimate is not adjusted for the lag time from reporting to death (i.e., delay between the time someone dies and the time their death is reported). The fatality estimate could be lower due to cases that were undiagnosed or had milder symptoms.
Cumulative Hospitalization rate (overall)	902.5 (per 100,000 persons)	About 902 people per 100,000 have ever been hospitalized for COVID-19 during this outbreak.

## CASES AND DEATHS

**New cases** (by date of onset) and **new deaths** (by date of death) of COVID-19 in Oklahoma, February 2020–October 2021



Please note the different axes for new cases (top—from 0 to 7,000 for new cases) and new deaths (bottom—from 0 to 80 for new deaths). Additionally, a 7-day lag has been applied to the COVID-19 case trend line based on information.

## DEMOGRAPHIC INFORMATION AS OF OCTOBER 12, 2021

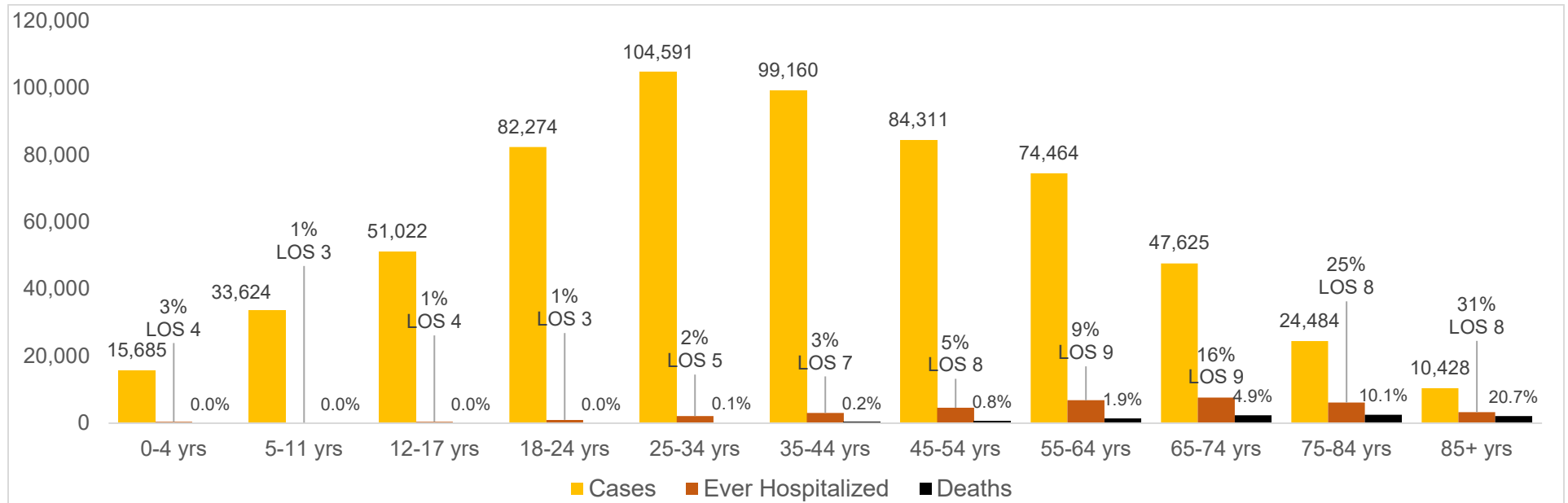
		Cases count (%) <sup>1</sup>		Deaths count (%) <sup>1</sup>		Cumulative Incidence Rate <sup>2</sup>	Cumulative Mortality Rate <sup>2</sup>
<b>Oklahoma</b>		<b>627,699</b>		<b>9,402</b>		<b>15,863.1</b>	<b>237.6</b>
<b>Gender</b>							
	Male	<b>295,499</b>	<b>(47.1)</b>	<b>5,266</b>	<b>(56.0)</b>	<b>15,130.2</b>	<b>269.6</b>
	Female	<b>332,200</b>	<b>(52.9)</b>	<b>4,136</b>	<b>(44.0)</b>	<b>16,693.2</b>	<b>207.8</b>
	Unknown	<b>0</b>	<b>(0.0)</b>	<b>0</b>	<b>(0.0)</b>		
<b>Age group</b>							
	Under 1- 4	<b>15,685</b>	<b>(2.5)</b>	<b>0</b>	<b>(0.0)</b>	<b>6,138.2</b>	<b>0.0</b>
	5-11	<b>33,624</b>	<b>(5.4)</b>	<b>0</b>	<b>(0.0)</b>	<b>8,937.4</b>	<b>0.0</b>
	12-17	<b>51,022</b>	<b>(8.1)</b>	<b>5</b>	<b>(0.1)</b>	<b>15,920.0</b>	<b>1.6</b>
	18-24	<b>82,274</b>	<b>(13.1)</b>	<b>17</b>	<b>(0.2)</b>	<b>21,599.6</b>	<b>4.5</b>
	25-34	<b>104,591</b>	<b>(16.7)</b>	<b>91</b>	<b>(1.0)</b>	<b>19,240.7</b>	<b>16.7</b>
	35-44	<b>99,160</b>	<b>(15.8)</b>	<b>244</b>	<b>(2.6)</b>	<b>19,916.7</b>	<b>49.0</b>
	45-54	<b>84,311</b>	<b>(13.4)</b>	<b>645</b>	<b>(6.9)</b>	<b>18,589.7</b>	<b>142.2</b>
	55-64	<b>74,464</b>	<b>(11.9)</b>	<b>1,438</b>	<b>(15.3)</b>	<b>15,083.0</b>	<b>291.3</b>
	65-74	<b>47,625</b>	<b>(7.6)</b>	<b>2,327</b>	<b>(24.8)</b>	<b>12,939.8</b>	<b>632.3</b>
	75-84	<b>24,484</b>	<b>(3.9)</b>	<b>2,475</b>	<b>(26.3)</b>	<b>12,691.3</b>	<b>1,282.9</b>
	85+	<b>10,428</b>	<b>(1.7)</b>	<b>2,160</b>	<b>(23.0)</b>	<b>14,060.9</b>	<b>2,912.5</b>
	Unknown	<b>31</b>	<b>(0.0)</b>				
<b>Race</b>							
	American Indian or Alaska Native	<b>63,811</b>	<b>(10.2)</b>	<b>818</b>	<b>(8.7)</b>	<b>20,773.0</b>	<b>266.3</b>
	Asian or Pacific Islander	<b>10,491</b>	<b>(1.7)</b>	<b>101</b>	<b>(1.1)</b>	<b>11,847.1</b>	<b>114.1</b>
	Black or African American	<b>37,136</b>	<b>(5.9)</b>	<b>615</b>	<b>(6.5)</b>	<b>12,908.8</b>	<b>213.8</b>
	Multiracial/Other	<b>22,018</b>	<b>(3.5)</b>	<b>254</b>	<b>(2.7)</b>	<b>5,321.5</b>	<b>61.4</b>
	White	<b>353,951</b>	<b>(56.4)</b>	<b>6,796</b>	<b>(72.3)</b>	<b>12,437.2</b>	<b>238.8</b>
	Unknown	<b>140,292</b>	<b>(22.4)</b>	<b>818</b>	<b>(8.7)</b>		
<b>Ethnicity</b>							
	Hispanic or Latino	<b>59,609</b>	<b>(9.5)</b>	<b>486</b>	<b>(5.2)</b>	<b>13,892.3</b>	<b>113.3</b>
	Not Hispanic or Latino	<b>399,080</b>	<b>(63.6)</b>	<b>7,826</b>	<b>(83.2)</b>	<b>11,356.9</b>	<b>222.7</b>
	Unknown/Other	<b>169,010</b>	<b>(26.9)</b>	<b>1,090</b>	<b>(11.6)</b>		

1. Percentages may not add up to 100 due to rounding. 2. Rate per 100,000 population based on 2019 Census Population data.

## NEW CASES, HOSPITALIZATIONS, AND DEATHS BY AGE GROUP FOR WEEK OF OCT 3-9

Age group	Percentage of Population Fully Vaccinated	New Cases (%)	New Hospitalizations (%)	New Deaths (%)
Under 1- 4	-	339 (3.9%)	4 (0.9%)	0 (0.0%)
5-11	-	826 (9.6%)	3 (0.7%)	0 (0.0%)
12-17	29.5%	805 (9.3%)	9 (2.0%)	0 (0.0%)
18-24	34.7%	892 (10.3%)	17 (3.7%)	1 (0.5%)
25-34	36.7%	1400 (16.2%)	35 (7.7%)	3 (1.6%)
35-44	46.0%	1329 (15.4%)	51 (11.2%)	9 (4.8%)
45-54	51.2%	1030 (11.9%)	63 (13.8%)	21 (11.1%)
55-64	58.6%	964 (11.2%)	83 (18.2%)	46 (24.3%)
65-74	72.6%	633 (7.3%)	84 (18.4%)	42 (22.2%)
75-84	70.9%	310 (3.6%)	73 (16.0%)	37 (19.6%)
85+	64.8%	115 (1.3%)	34 (7.5%)	30 (15.9%)
Unknown	-	0 (0.0%)	0 (0.0%)	0 (0.0%)

## CUMULATIVE CASES, PERCENT HOSPITALIZED, AVERAGE LENGTH OF STAY (AUGUST 2021 CASES) AND DEATHS BY AGE GROUP



## AT-RISK SETTINGS

### HEALTHCARE & NON-HEALTHCARE

Status	Non-Healthcare Worker count (%)	Healthcare Worker count (%)
Active	11,675 (1.9)	230 (1.2)
Deceased	9,317 (1.5)	85 (0.4)
Recovered	587,587 (96.6)	18,805 (98.4)
<b>Total</b>	<b>608,579</b>	<b>19,120</b>

### LONG TERM CARE (LTC) FACILITIES<sup>2</sup>

	Cases (%)	Deaths (%)
Residents	9,039 (61.9)	1,748 (98.8)
Staff	5,558 (38.1)	22 (1.2)
<b>Total</b>	<b>14,597</b>	<b>1,778</b>

<sup>2</sup>Long term care facility or nursing home.

### CORRECTIONAL FACILITIES<sup>1</sup>

	Cases (%)	Deaths (%)
Inmates	5,395 (75.5%)	57 (91.9%)
Staff	1,755 (24.5%)	5 (8.1%)
<b>Total</b>	<b>7,150</b>	<b>62</b>

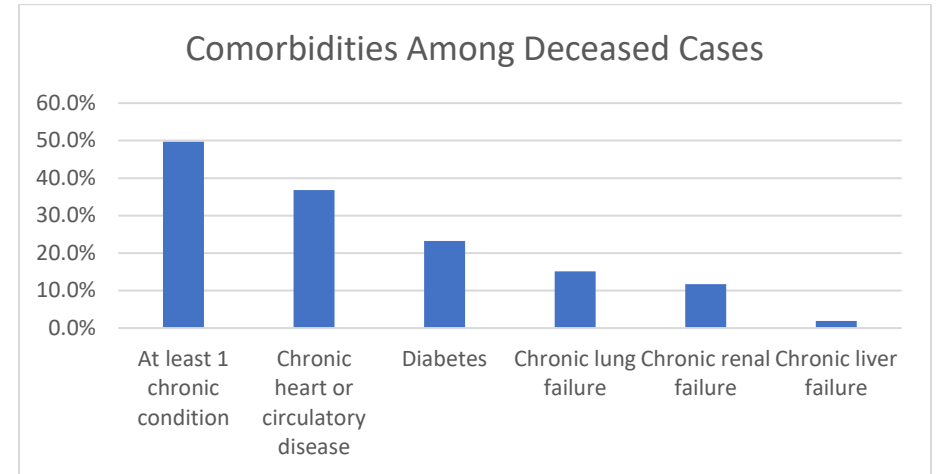
<sup>1</sup>Correctional facilities include prisons, jails, and juvenile detention center

*Detailed counts of LTC Cases by County and Facility can be found at the end of this report.*

## COMORBIDITIES AMONG DECEASED CASES

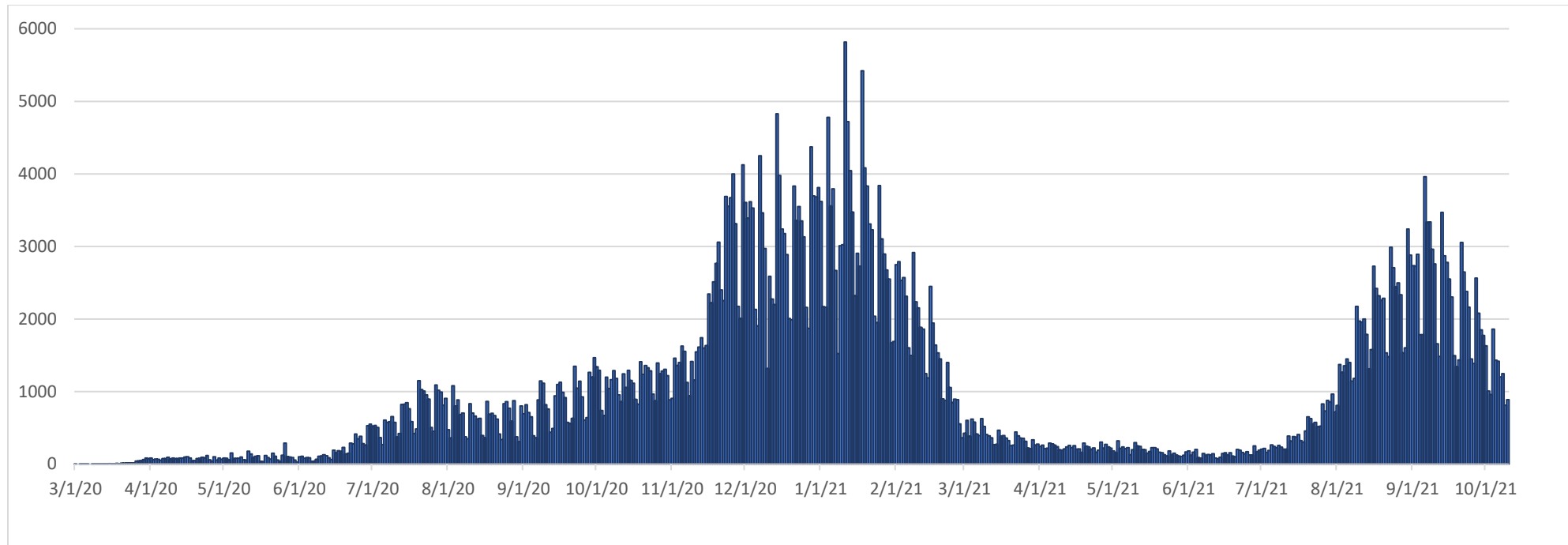
Comorbidities	Number (%)
At least 1 chronic condition <sup>4</sup>	4,675 (49.7%)
Chronic heart or circulatory disease	3,462 (36.8%)
Diabetes	2,185 (23.2%)
Chronic lung failure	1,422 (15.1%)
Chronic renal failure	1,100 (11.7%)
Chronic liver failure	181 (1.9%)

<sup>4</sup>Chronic conditions include chronic heart or circulatory disease, diabetes, chronic lung failure, chronic liver failure and renal failure.



## RECOVERED CASES

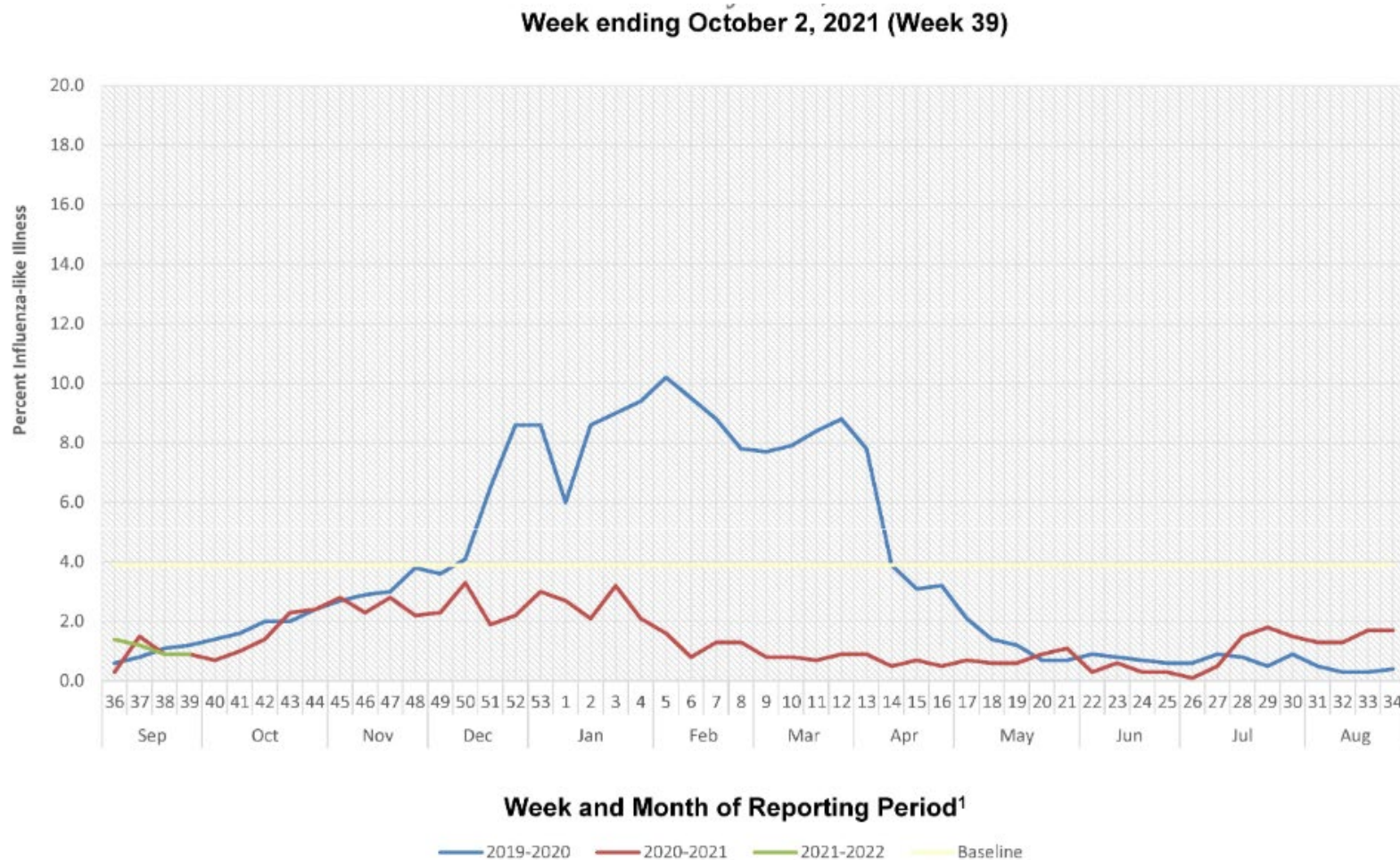
### Distribution of recovered cases of COVID-19, March 2020 – October 2021, Oklahoma



Recovered case: is not deceased and 14 days after symptom onset/specimen collection. Please note that the definition for recovered was changed starting May 4, 2021 due to incomplete data on hospitalizations which may result in an inaccurate estimation of the active cases.

## SYMPTOMS CRITERIA

### WEEKLY PERCENT OF INFLUENZA-LIKE ILLNESS BASED ON TOTAL PATIENT VISITS TO SENTINEL CLINICIANS, OKLAHOMA VIRAL RESPIRATORY ILLNESS SURVEILLANCE SYSTEM, 2019-2021



<sup>1</sup>These units correspond to the number of weeks in a year and allow for a comparison between multiple seasons.

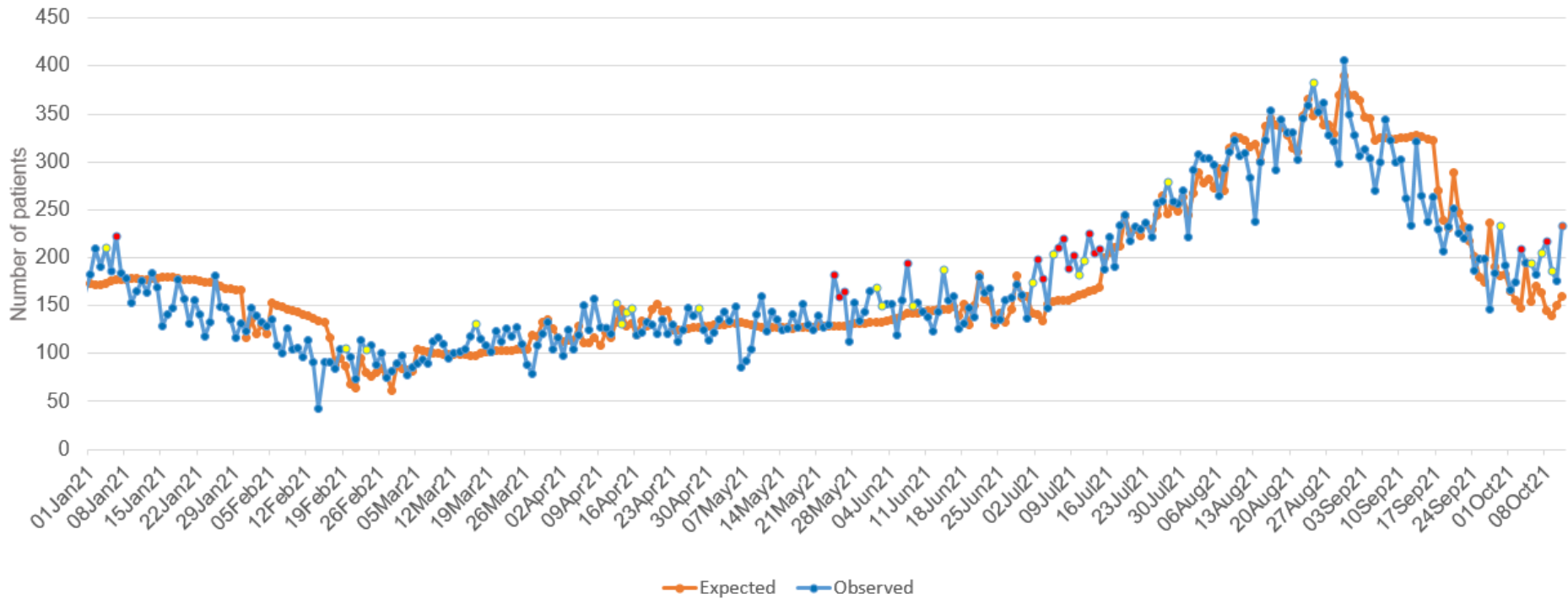
**Interpretation:** Data on Influenza-Like Illness (ILI) accounted for 1.5% of outpatient visits exhibiting fever with cough or sore throat. The most current week's value of 1.5% is below Oklahoma's baseline ILI of 3.9%.

**Note:** Data current up to week ending October 2, 2021 (Week 39).

**Source:** <https://oklahoma.gov/content/dam/ok/en/health/health2/aem-documents/prevention-and-preparedness/acute-disease-service/disease-information/flu-view>

## COVID-19 RELATED EMERGENCY DEPARTMENT VISITS

Oklahoma State Syndromic Surveillance of  
COVID-19 related ED Visits  
January 01, 2021 – October 11, 2021



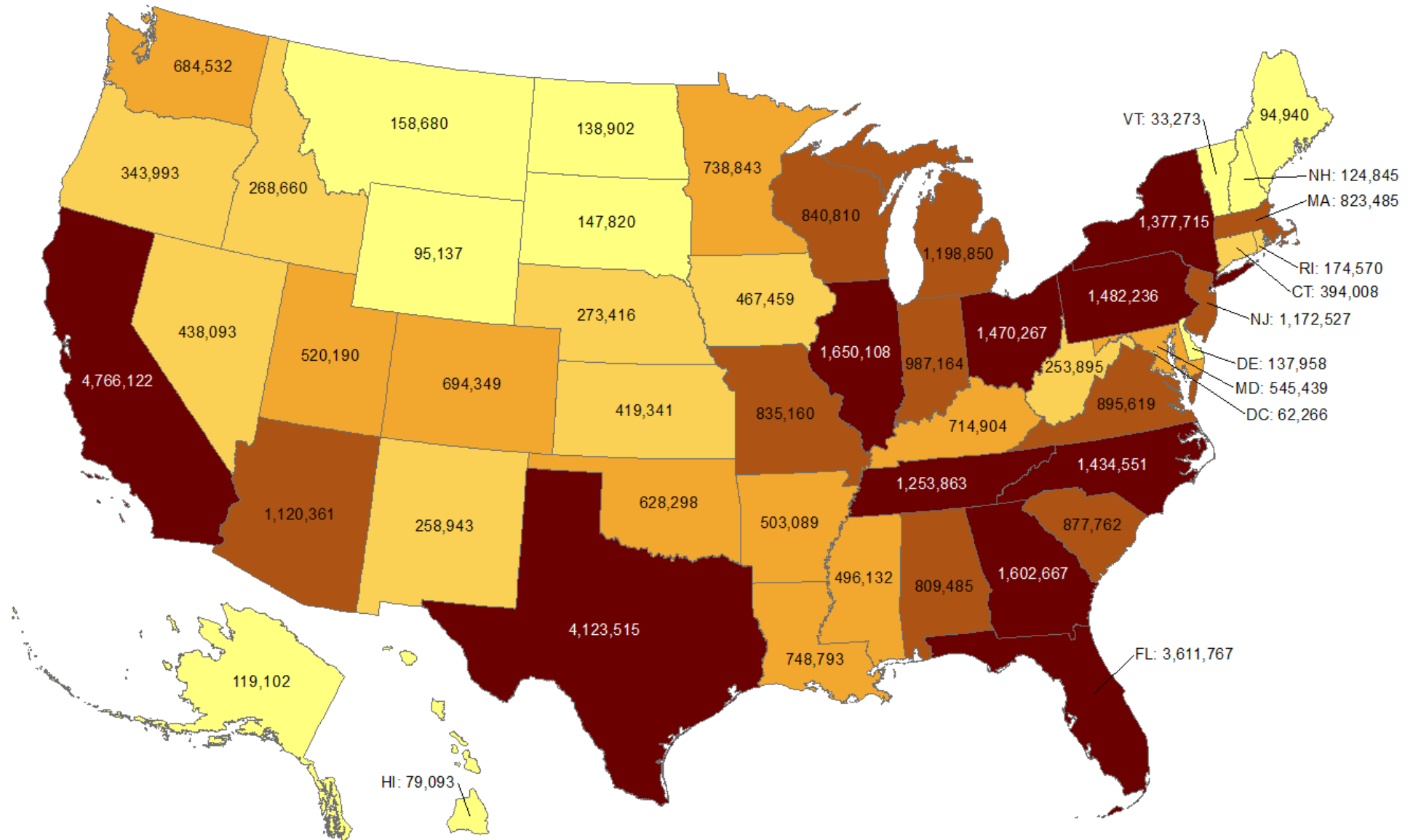
**Interpretation:** Data from syndromic surveillance shows that the number of COVID-19 related emergency department visits were significantly higher than the expected range on 3 days out of the past 2 weeks as indicated by the red dots on the observed line.

.....

# OKLAHOMA IN COMPARISON

## Total number of reported COVID-19 cases

Oklahoma ranks **26** (out of all States and DC) in the total number of reported COVID-19 cases in the US.



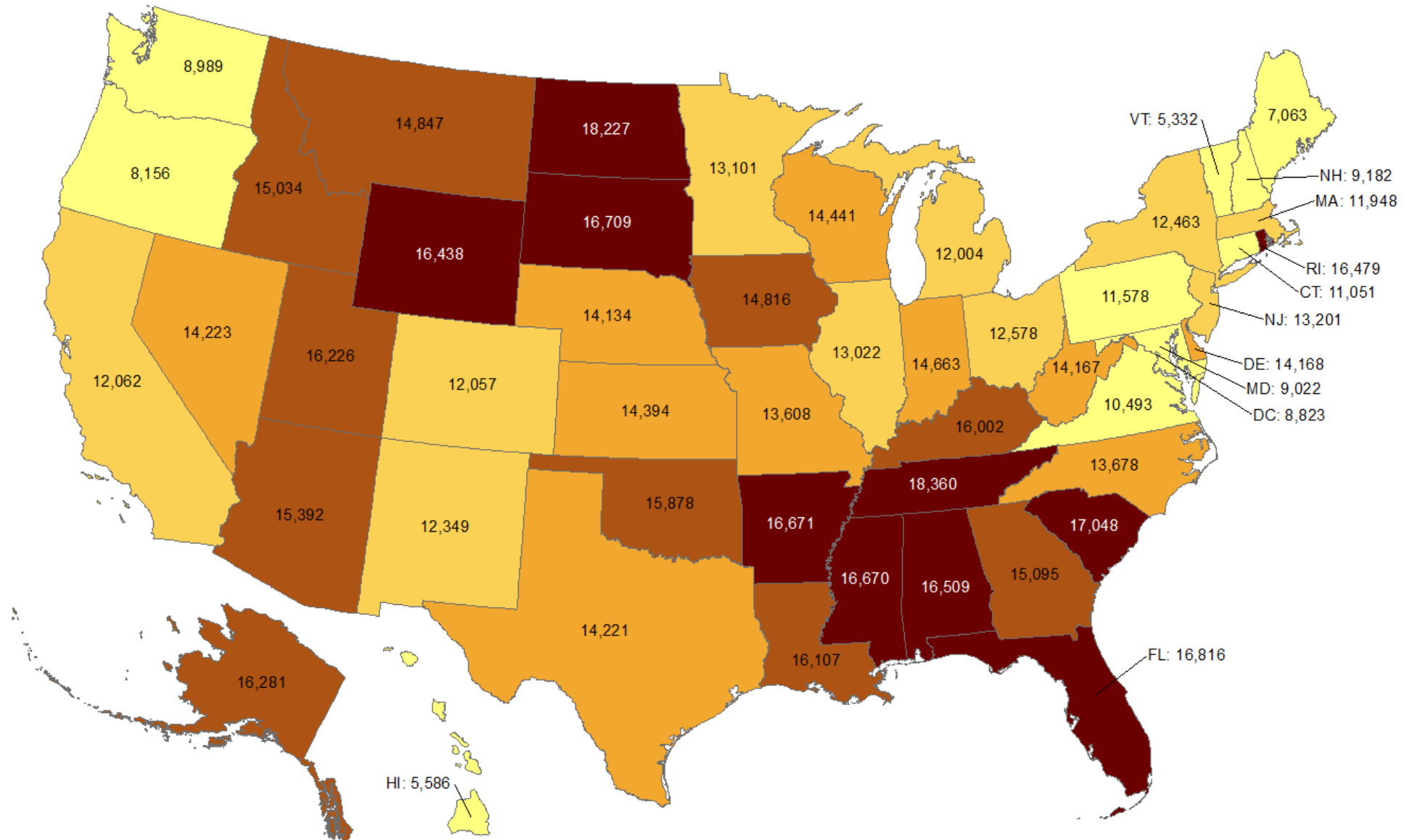
Data from CDC. Available at <https://www.cdc.gov/covid-data-tracker/index.html>

Data as of October 12, 2021

NOTE: CDC numbers include both Confirmed and Probable cases.

## Cumulative incidence of reported COVID-19 cases

Oklahoma ranks **15** (out of all States and DC) in the cumulative incidence (per 100,000 persons) of reported COVID-19 cases in the US.



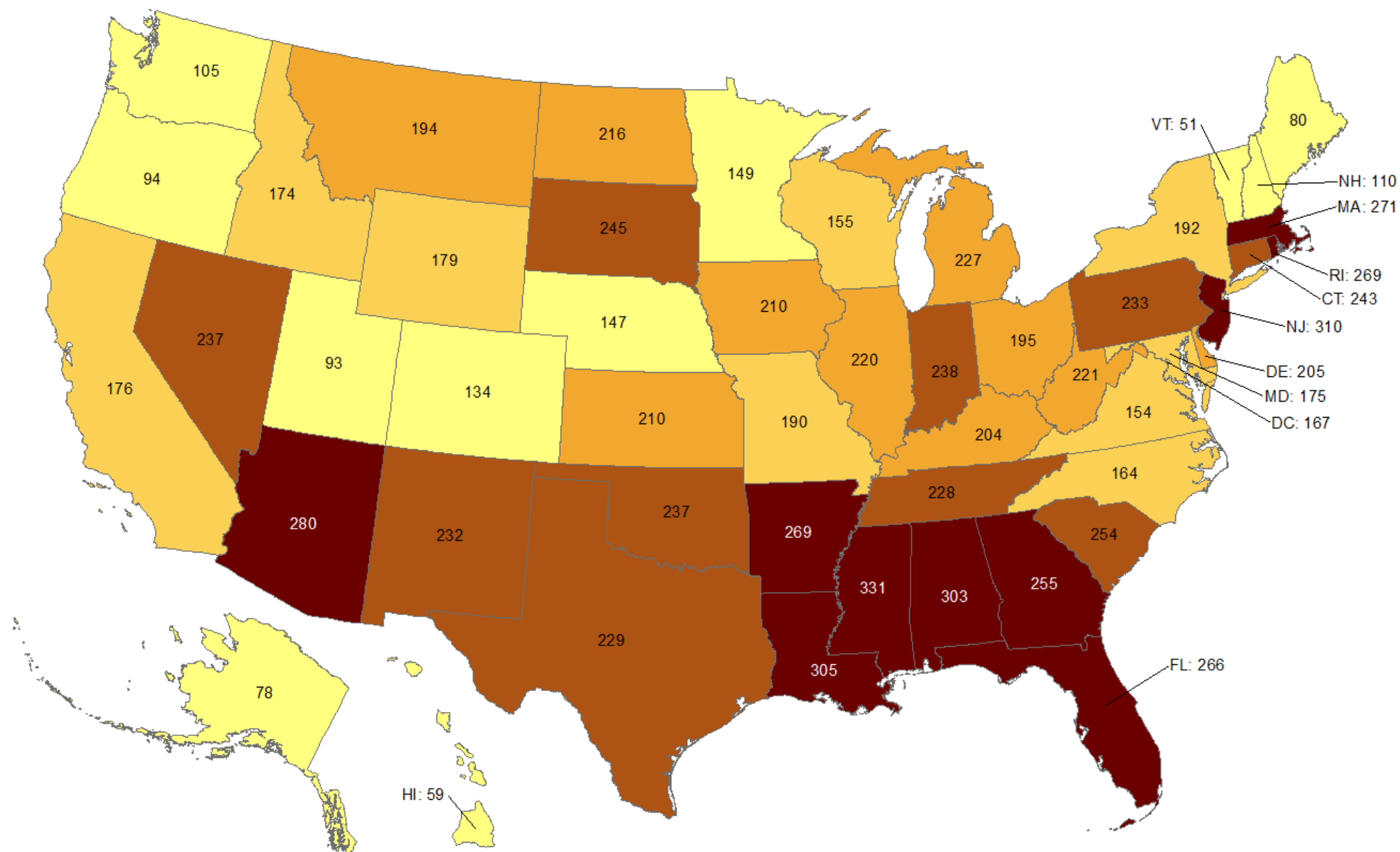
Data from CDC. Available at <https://www.cdc.gov/covid-data-tracker/index.html>  
Data as of October 12, 2021

Oklahoma ranks **23** (out of all States and DC) in the total number of reported COVID-19 deaths in the US.



## Cumulative death rate of reported COVID-19 cases

Oklahoma ranks **15** (out of all States and DC) in the cumulative death rate (per 100,000 persons) of reported COVID-19 cases in the US.

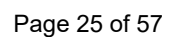


Data from CDC. Available at <https://www.cdc.gov/covid-data-tracker/index.html>  
Data as of October 12, 2021

Oklahoma ranks **24** (out of all States and DC) in the total number of reported COVID-19 cases in the last 7 days.

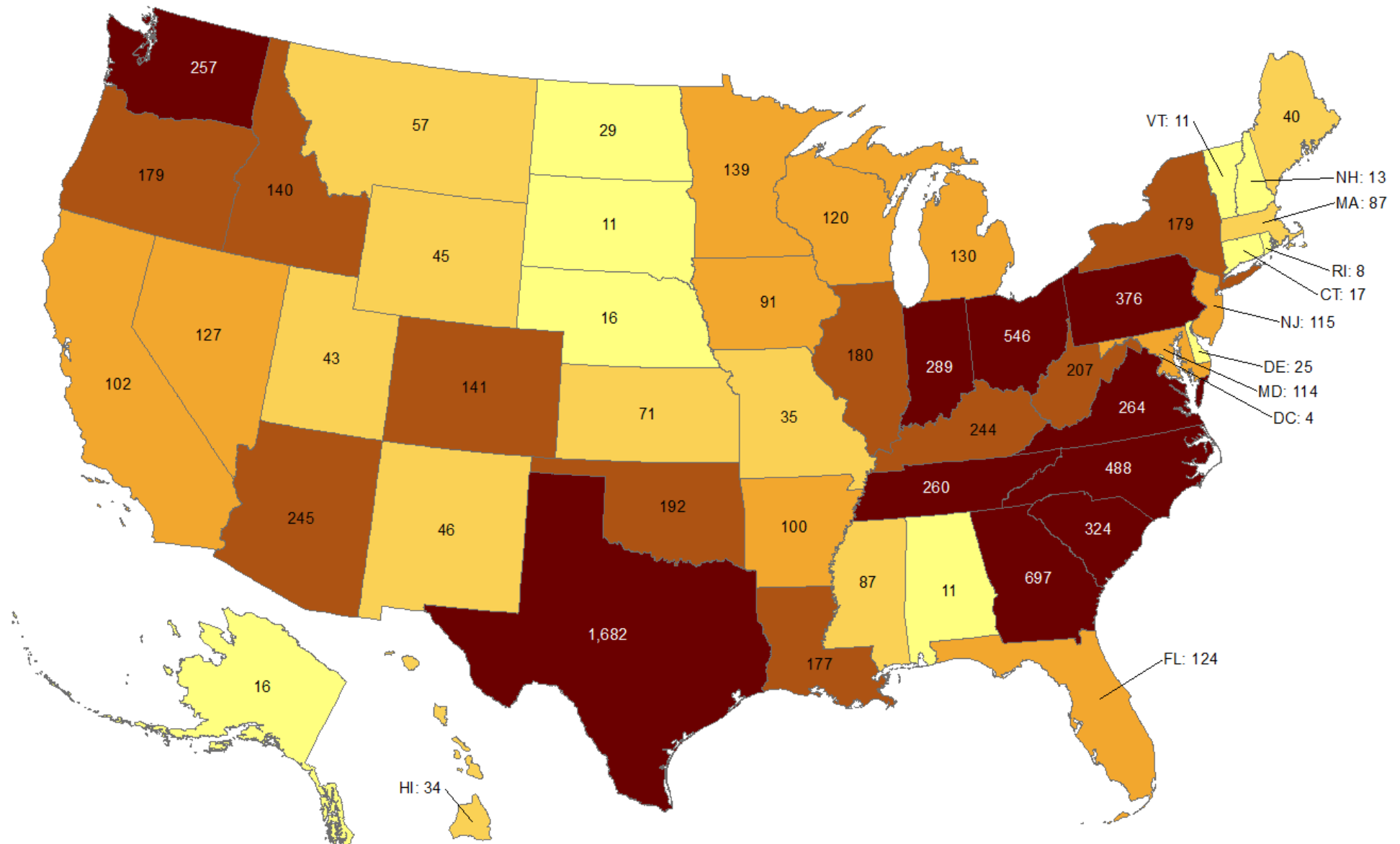
NOTE: CDC numbers include both Confirmed and Probable cases. Total new cases reported October 6, 2021 – October 12, 2021.

Oklahoma ranks **24** (out of all States and DC) in the cumulative incidence (per 100,000 persons) of reported COVID-19 cases in the last 7 days.



### Total number of reported COVID-19 deaths in last 7 days

Oklahoma ranks **14** (out of all States and DC) in the total number of reported COVID-19 deaths in the last 7 days.



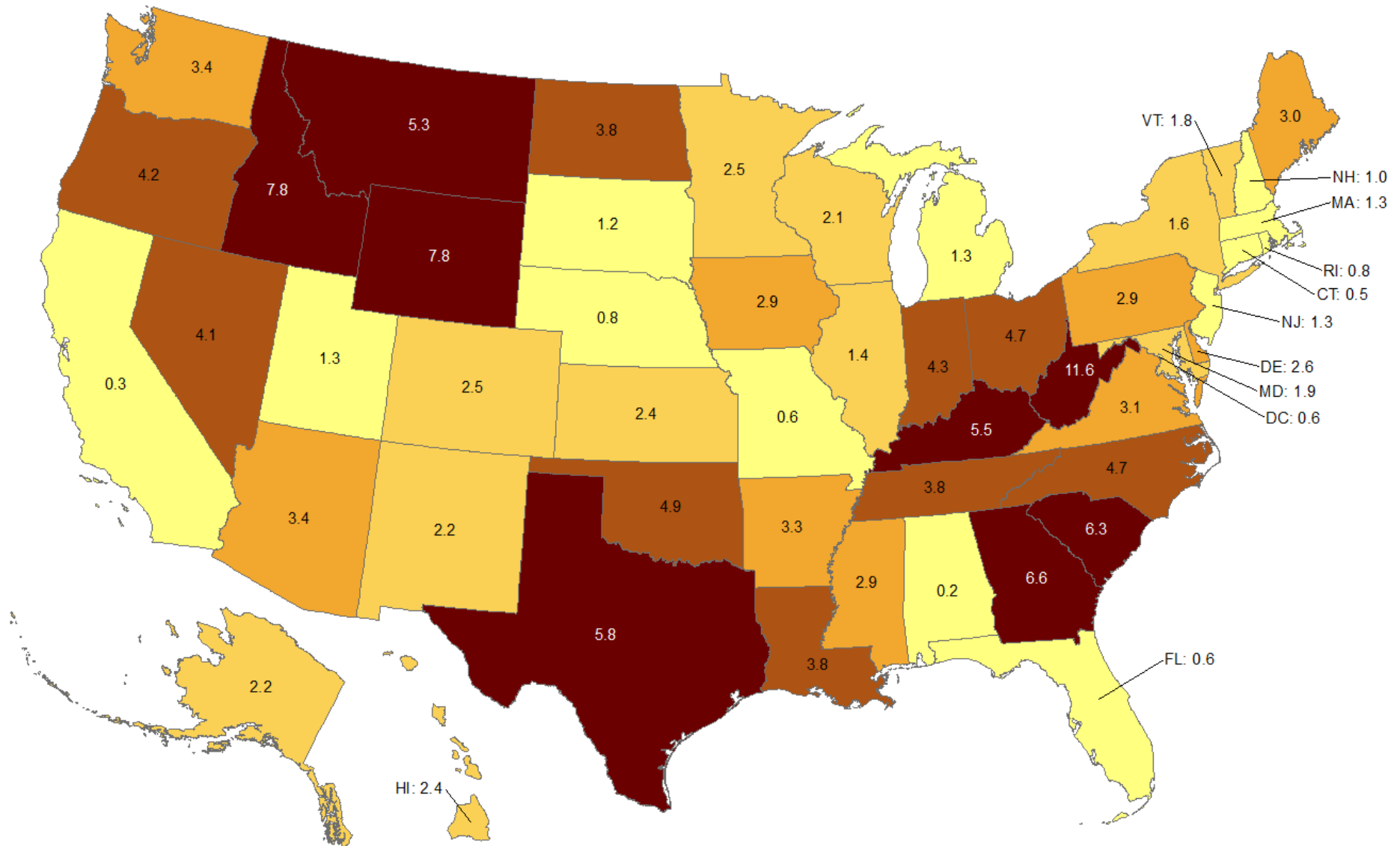
Data from CDC. Available at <https://www.cdc.gov/covid-data-tracker/index.html>

Data as of October 12, 2021

NOTE: CDC numbers include both Confirmed and Probable cases. Total new cases reported October 6, 2021 – October 12, 2021.

## Cumulative death rate of reported COVID-19 cases in last 7 days

Oklahoma ranks **9** (out of all States and DC) in the cumulative death rate (per 100,000 persons) of reported COVID-19 cases in the last 7 days.

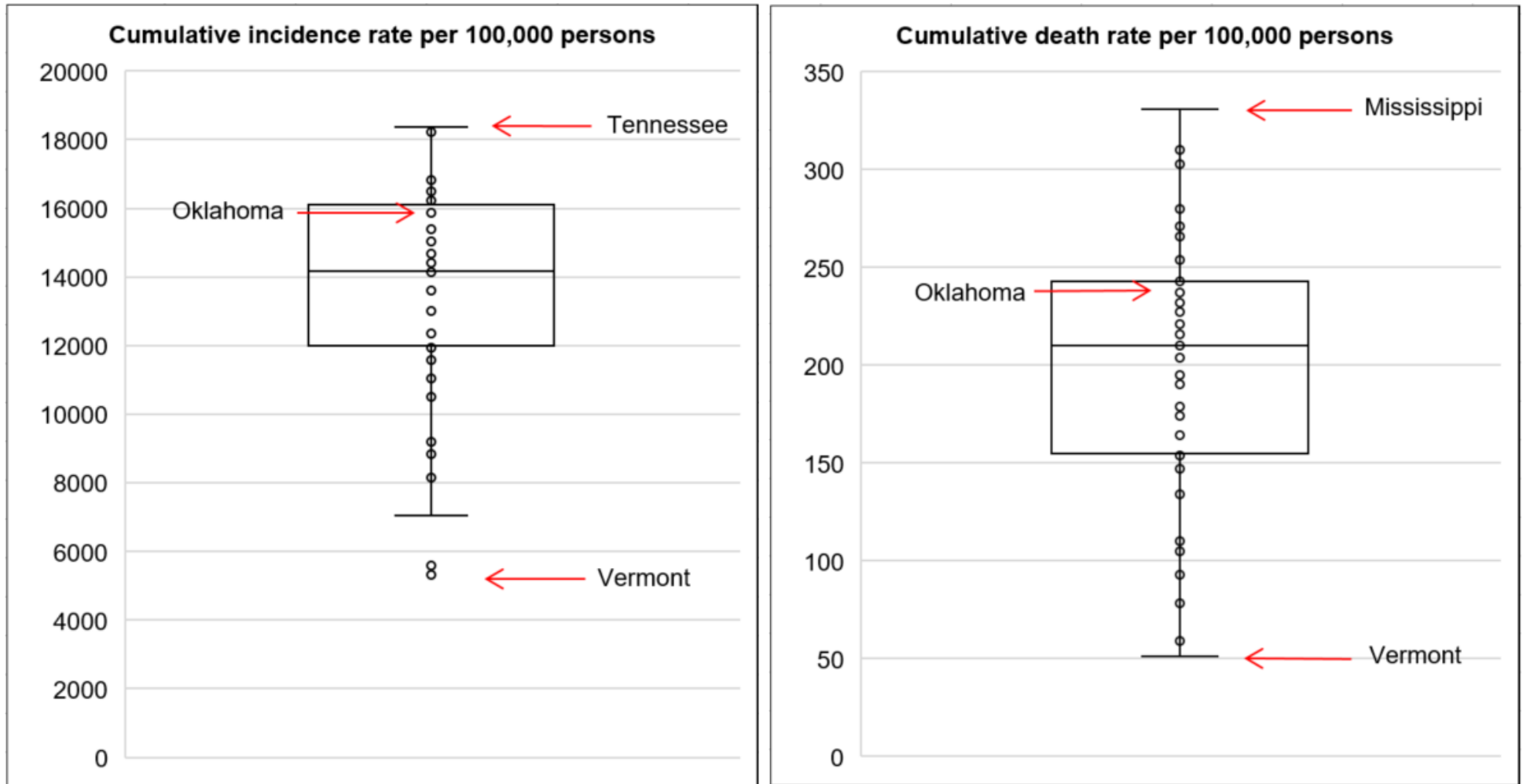


Data from CDC. Available at <https://www.cdc.gov/covid-data-tracker/index.html>

Data as of October 12, 2021

NOTE: Totals per 100,000 people in the last 7 days are calculated as the 7-day moving average of new cases or deaths (October 12, 2021 + 6 preceding days divided by 7) per 100,000 people using the U.S. Census Bureau, 2019.

## Cumulative incidence and cumulative death rate of reported COVID-19 cases



**Interpretation:** Oklahoma has cumulative incidence rate that is **below the 75<sup>th</sup> percentile** of the US and cumulative death rate that is between 50<sup>th</sup> and 75<sup>th</sup> percentile of the US.

## OKLAHOMA EXCESS DEATH ANALYSIS

- + indicates observed count above threshold
- Predicted number of deaths from all causes
- upper bound threshold for excess deaths

### Weekly number of deaths (from all causes)

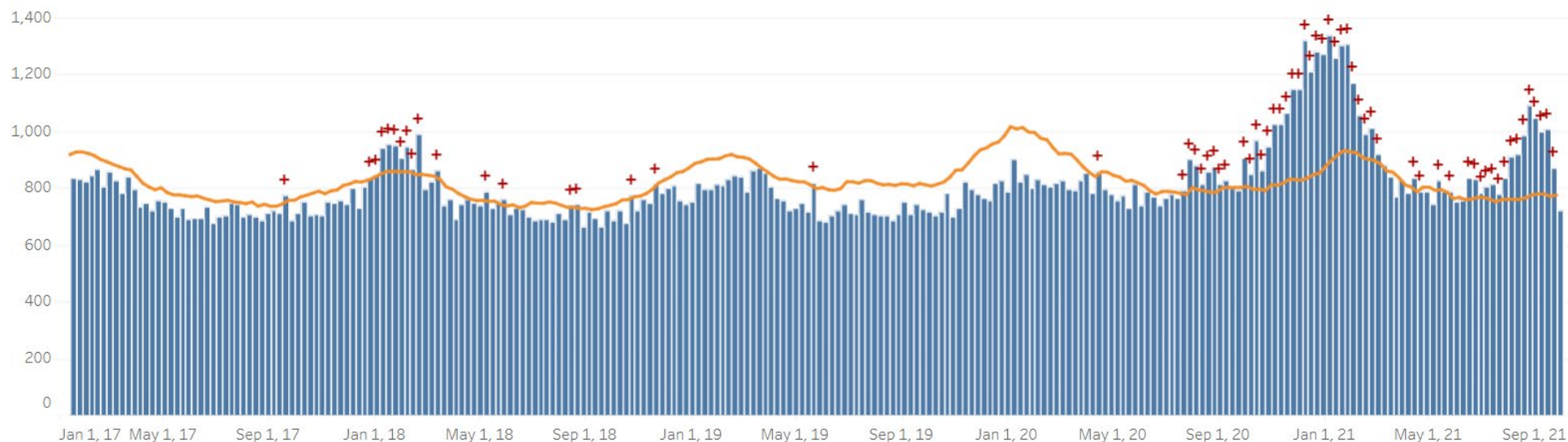


Figure notes: Contains data up to the week-ending date of September 25, 2021. Data in recent weeks are incomplete. Only 60% of the death records are submitted to NCHS within 10 days of the date of death, and completeness varies by jurisdiction.

Source: CDC, National Center for Health Statistics, [https://www.cdc.gov/nchs/nvss/vsrr/covid19/excess\\_deaths.htm#dashboard](https://www.cdc.gov/nchs/nvss/vsrr/covid19/excess_deaths.htm#dashboard), October 12, 2021 3PM

---

## COVID-19 LTC OR NURSING HOME ASSOCIATED CASES BY COUNTY

Status as of 7:00 AM October 12, 2021

Data are preliminary and are subject to change as cases are processed.

County of Residence	Cases	Recovered**	Deaths
Adair	42	33	8
Alfalfa	12	12	0
Atoka	104	98	6
Beaver	24	21	3
Beckham	175	153	16
Blaine	55	52	3
Bryan	283	255	25
Caddo	178	156	22
Canadian	275	247	20
Carter	202	165	35
Cherokee	164	139	25
Choctaw	119	101	9
Cleveland	802	673	123
Coal	73	65	8
Comanche	282	248	30
Cotton	55	46	9
Craig	58	55	3
Creek	259	232	26
Custer	247	199	47

County of Residence	Cases	Recovered**	Deaths
Delaware	266	220	45
Dewey	19	18	1
Ellis	8	7	0
Garfield	348	310	37
Garvin	94	86	7
Grady	229	193	34
Grant	15	13	2
Greer	64	56	7
Harmon	57	56	1
Harper	3	2	1
Haskell	71	66	5
Hughes	43	41	1
Jackson	127	106	20
Jefferson	28	25	3
Johnston	36	29	6
Kay	240	211	27
Kingfisher	126	110	15
Kiowa	51	39	9
Latimer	49	42	6
Le Flore	267	249	17
Lincoln	145	121	24
Logan	184	158	22
Love	31	28	3

County of Residence	Cases	Recovered**	Deaths
Major	85	73	12
Marshall	37	35	1
Mayes	147	138	9
McClain	167	151	16
McCurtain	105	82	20
McIntosh	138	125	12
Murray	83	76	5
Muskogee	438	387	48
Noble	157	153	4
Nowata	87	86	1
Okfuskee	44	43	1
Oklahoma	2,056	1,771	271
Okmulgee	117	111	3
Osage	124	105	14
Ottawa	275	250	24
Pawnee	118	97	20
Payne	159	149	8
Pittsburg	333	296	36
Pontotoc	80	72	8
Pottawatomie	245	220	23
Pushmataha	71	66	5
Roger Mills	3	2	1
Rogers	540	449	87

County of Residence	Cases	Recovered**	Deaths
Seminole	197	167	9
Sequoyah	109	95	14
Stephens	289	266	19
Texas	72	62	10
Tillman	34	32	2
Tulsa	1,655	1,341	302
Wagoner	195	175	19
Washington	370	318	49
Washita	48	45	2
Woods	44	38	5
Woodward	65	58	7
<i>Total</i>	<i>14,597</i>	<i>12,670</i>	<i>1,,778</i>

\*\* Recovered case: is not deceased and 14 days after symptom onset/specimen collection. Please note that the definition for recovered was changed starting May 4, 2021 due to incomplete data on hospitalizations which may result in an inaccurate estimation of the active cases.

## COVID-19 LTC OR NURSING HOME ASSOCIATED CASES BY FACILITY

Status as of 7:00 AM October 12, 2021

Data are preliminary and are subject to change as cases are processed.

Facility	Cases	Recovered**	Deaths
Aberdeen Heights Assisted Living Community	16	13	3
Aberdeen Memory Care of Tulsa	7	3	4
Accel at Crystal Park	53	43	10
Ada Care Center	7	7	0
Adams PARC Post Acute Recovery Center	111	91	19
Albert Hall	7	7	0
Alcis Place	1	1	0
Ambassador Manor Nursing Center	38	27	11
Anadarko Nursing & Rehab	45	43	2
Angelwood Assisted Living and Memory Care	1	1	0
Antlers Manor	29	29	0
Arbor House Assisted Living Center - Norman	23	15	8
Arbor House Assisted Living Center of Mustang	37	30	7
Arbor House Assisted Living of Midwest City	4	3	1
Arbor House Reminisce	36	28	8
Arbor Village	12	11	1
Artesian Home	28	24	3
Ash Street Place	7	6	0
Ashbrook Village	6	6	0
Aspen Health and Rehab	15	15	0

Facility	Cases	Recovered**	Deaths
Atoka Manor	94	87	6
Autumn Leaves of Edmond	34	30	4
Autumn Leaves of Southwest Oklahoma City	3	2	1
Autumn Leaves of Tulsa	6	5	1
Avondale Cottage of Pryor	1	1	0
Avonlea Cottage of Seminole	26	23	1
Avonlea Cottage of Shawnee, LLC	10	10	0
Ayers Nursing Home	20	12	7
Ballard Nursing Center	27	22	5
Baptist Village of Hugo	71	57	4
Baptist Village of Oklahoma City	70	64	5
Baptist Village of Owasso	58	46	12
Baptist Village of Owasso AL	27	26	1
Barnsdall Nursing Home	14	13	1
Bartlesville Assisted Living	34	34	0
Bartlesville Health and Rehabilitation Community	110	87	22
Beacon Ridge	16	15	0
Beadles Nursing Home	34	29	5
Beare Manor	32	23	9
Beaver County Nursing Home	23	20	3
Beehive Homes of Broken Arrow	1	1	0
Beehive Homes of Glenpool	2	2	0

Facility	Cases	Recovered**	Deaths
Belfair of McAlester	12	10	2
Belfair of Shawnee	4	4	0
Bell Avenue Nursing Center	44	40	4
Bellarose Senior Living	8	5	3
Bellevue Health and Rehabilitation	108	86	21
Betty Ann Nursing Center	30	28	2
Beverly Place	1	1	0
Billings Fairchild Center, Inc	133	131	2
Binger Nursing and Rehabilitation	63	51	12
Blue Ridge Place	3	3	0
Blue River Healthcare, Inc	26	21	5
Boyce Manor Nursing Home	15	14	1
Bradford Village Healthcare Center: Nursing Home	24	20	4
Brentwood Extended Care & Rehab	24	22	2
Broadway Living Center	7	6	1
Broadway Manor Nursing Home	51	42	8
Broken Arrow Assisted Living	7	5	2
Broken Arrow Nursing Home, Inc.	38	31	6
Broken Bow Nursing Home	59	46	12
Brookdale Ada	5	5	0
Brookdale Bartlesville North	23	19	4
Brookdale Bartlesville South	16	14	2

Facility	Cases	Recovered**	Deaths
Brookdale Broken Arrow	14	12	2
Brookdale Cedar Ridge	17	15	2
Brookdale Chickasha	23	17	6
Brookdale Claremore	7	6	1
Brookdale Durant	27	25	2
Brookdale Edmond Danforth	20	16	4
Brookdale Edmond Santa Fe	6	6	0
Brookdale Enid	4	4	0
Brookdale Muskogee	23	17	6
Brookdale Norman	1	1	0
Brookdale Owasso	2	2	0
Brookdale Shawnee	1	0	1
Brookdale Stillwater	5	4	1
Brookdale Tulsa 71st and Sheridan	72	58	14
Brookdale Tulsa Midtown	11	8	3
Brookdale Tulsa South	8	7	1
Brookdale Village	3	2	1
Brookdale Weatherford	14	12	2
Brookridge Retirement Community	8	8	0
Brookside Nursing Center	8	8	0
Brookwood Skilled Nursing and Therapy	11	8	3
Burford Manor	17	16	1

Facility	Cases	Recovered**	Deaths
Calera Manor, LLC	45	41	4
Callaway Nursing Home	14	14	0
Canoe Brook Ardmore	7	7	0
Capitol Hill Skilled Nursing and Therapy	49	41	7
Carnegie Nursing Home, Inc.	39	33	6
Cearu Medical Resort	2	2	0
Cedar Creek Nursing Center	80	75	5
Cedar Crest Manor	29	28	0
Cedarcrest Care Center	53	44	9
Center of Family Love	18	18	0
Chandler Therapy & Living Center, LLC	60	51	9
Checotah Nursing Center	8	6	2
Cherokee County Nursing Center	66	57	9
Chickasha Nursing Center, Inc	13	9	4
Chisholm Trail Assisted Living	24	23	1
Choctaw Nation Nursing Home	37	32	5
Cimarron Nursing Center	23	19	4
Cimarron Pointe Care Center	28	24	3
Claremore Skilled Nursing and Therapy	36	30	5
Cleveland Manor Nursing & Rehab	69	58	10
Clinton Therapy & Living Center	7	7	0
Colonial Manor II	60	59	1

Facility	Cases	Recovered**	Deaths
Colonial Manor Nursing Home	25	21	4
Colonial Park Manor, LLC	6	6	0
Colonial Terrace Care Center	28	28	0
Community Health Care of Gore	12	12	0
Community Health Center	11	9	2
Copp's Residential Care, Inc	3	3	0
Cordell Christian	12	12	0
Corn Heritage Village and Rehab	27	26	1
Corn Heritage Village and Rehab of Weatherford	65	54	11
Cottonwood Creek Skilled Nursing & Therapy	35	29	6
Country Club Care	95	87	5
Country Club at Woodland Hills	9	9	0
Country Gardens Assisted Living Community	1	0	0
Country Lane	4	4	0
Country Place	1	1	0
Countryside Estates	19	17	2
Countrywood Assisted Living and Memory Care	12	8	4
Covenant Living at Inverness	30	27	3
Covenant Living of Bixby	6	6	0
Coweta Manor Nursing Home	76	64	12
Creek Place	3	3	0
Creekside Village	14	13	1

Facility	Cases	Recovered**	Deaths
Cross Place	1	1	0
Cross Timbers Nursing and Rehabilitation	59	56	3
Crossroads Residential Care	16	14	2
Crystal Place, LLC	1	1	0
Dogwood Creek Retirement Center	8	8	0
Dorset Place - Assisted Living	2	2	0
Dr W F & Mada Dunaway Manor	41	36	5
Drumright Nursing Home	47	45	2
Duncan Assisted Living	19	18	1
Duncan Community Residence	1	1	0
EastOK Cottage 1	3	3	0
Eastgate Village Retirement Center	105	97	8
Eastwood Manor	96	91	5
Eden Care - The Greens	1	1	0
Edith Kassanavoid Gordon Assisted Living Center	4	4	0
Edmond Healthcare Center	53	44	9
Edna Lee's Residential Care	4	4	0
El Reno Post-Acute Rehabilitation Center	12	10	2
Elk City Nursing Center	61	52	8
Elk Crossing	43	36	7
Elkwood Assisted Living and Memory Care	25	22	3
Elmbrook Home	20	18	2

Facility	Cases	Recovered**	Deaths
Elmwood Manor Nursing Home	26	20	0
Emerald Care Center Claremore	125	109	16
Emerald Care Center Midwest	73	66	7
Emerald Care Center Southwest LLC	59	57	2
Emerald Care Center Tulsa	40	33	7
Emerald Square Assisted Living Community	3	3	0
English Village Manor	52	41	11
Enid Senior Care	18	15	3
Epworth Villa Health Services	35	33	2
Eufaula Manor Nursing and Rehabilitation Center	83	76	7
Fairfax Manor	31	26	5
Fairmont Skilled Nursing and Therapy	79	71	7
Fairview Fellowship Home for Senior Citizens, Inc	95	85	10
Family Care Center of Fairland	2	2	0
Family Care Center of Kingston	20	19	1
Faye's Place	7	7	0
Featherstone Assisted Living Community of Ada	4	4	0
Featherstone Assisted Living Community of Durant	5	5	0
Featherstone Assisted Living Community of Moore	38	33	5
Featherstone of Miami	1	0	0
First Shamrock Care Center	5	5	0
Forest Hills Care and Rehabilitation Center	32	26	6

Facility	Cases	Recovered**	Deaths
Forrest Manor Nursing Center	53	49	4
Fort Gibson Nursing Home	22	18	4
Fountain View Manor, Inc	11	10	1
FountainBrook Assisted Living and Memory Support	12	12	0
Four Seasons Rehabilitation & Care	44	43	1
Franciscan Villa	135	112	22
Garland Road Nursing and Rehab Center	13	11	2
Gatesway Foundation, Inc	9	9	0
Glade Avenue Assisted Living	6	6	0
Glade Avenue South	6	3	3
Glenhaven Retirement Village	77	69	8
Glenwood Healthcare	27	18	9
Go Ye Village Continuum of Care Retirement Community	9	4	5
Golden Age Nursing Home of Guthrie, LLC	89	68	19
Golden Oaks Village	51	40	11
Grace Living Center - Buffalo	1	0	1
Grace Living Center - Clinton	19	16	3
Grace Living Center - Jenks	41	32	9
Grace Living Center - Norman	92	75	17
Grace Living Center - Stillwater	16	15	1
Grace Living Center - Tahlequah East Shawnee	6	4	2
Gracewood Health and Rehab	45	37	8

Facility	Cases	Recovered**	Deaths
Gran Grans Place	2	2	0
Grand Lake Villa	38	29	9
Grandwood Assisted Living, LC	41	35	6
Green Country Care Center	103	91	12
Green Country Village Assisted Living Center	6	6	0
Green Tree at Sand Springs	29	23	6
Greenbrier Nursing Home	50	47	3
Greenbrier Village Residential Living, LLC	15	15	0
Gregston Nursing Home, Inc.	13	12	1
Grove Nursing Center	98	78	19
Harborchase of Oklahoma City	1	1	0
Harrah Nursing Center	48	42	6
Haskell Care Center	9	9	0
Haskell County Nursing Center, Inc	67	62	5
Hays House	38	38	0
Heartsworth Center for Nursing and Rehabilitation	49	46	3
Heartsworth House Assisted Living	1	1	0
Heatheridge Residential Care Center	22	16	6
Heavener Nursing & Rehab	56	47	8
Hennessey Nursing & Rehab	81	73	7
Henryetta Community Skilled Healthcare & Rehab	10	9	1
Hensley Nursing & Rehab	39	31	5

Facility	Cases	Recovered**	Deaths
Heritage Assisted Living	12	11	0
Heritage Community	32	27	5
Heritage Grove at Tahlequah	3	3	0
Heritage Hills Living & Rehabilitation Center	70	67	3
Heritage Manor	30	29	1
Heritage Park	7	4	3
Heritage Point of Oklahoma City	2	2	0
Heritage Point of Tulsa	7	7	0
Heritage Skilled Nursing & Therapy	9	7	1
Heritage Villa Nursing Center	22	17	4
Heritage Village Nursing Home	15	15	0
Heritage at Brandon Place Health and Rehabilitation	57	51	6
High Cedar Residential Care	1	1	0
Higher Call Nursing Center	38	31	7
Highland Park Health Care	10	9	1
Hill Nursing Home, Inc	16	15	1
Hillcrest Manor Nursing Center	9	3	5
Hillcrest Nursing Center	21	20	1
Hobart Nursing & Rehab	26	21	3
Holiday Heights Nursing Home	13	11	2
Home of Hope Elmwood House	1	1	0
Home of Hope Scraper House	1	1	0

Facility	Cases	Recovered**	Deaths
Homestead Residential Care	2	2	0
Homestead of Bethany, LLC	9	8	1
Homestead of Hugo	45	40	5
Homestead of Owasso	16	15	0
Ignite Medical Resort Norman, LLC	50	41	9
Ignite Medical Resort OKC	117	102	14
Iris Memory Care of Edmond	10	7	3
Jacquelyn House	2	2	0
Jan Frances Care Center	14	12	2
John H. Johnson Care Suites	10	10	0
Kenwood Manor	23	22	1
Kingwood Skilled Nursing and Therapy	29	26	3
Lake Country Nursing Center	30	27	3
Lake Drive Care and Rehabilitation Center	45	42	0
Lakeland Manor, Inc	14	11	3
Lakeview Nursing & Rehab	26	24	2
Landmark of Midwest City Rehabilitation and Nursing	44	38	6
Lane Nursing & Ventilator Care	3	3	0
Latimer Nursing Home	26	22	4
Legacy Village of Stillwater	17	16	0
Legend at 71st St	16	13	3
Legend at Council Road	7	7	0

Facility	Cases	Recovered**	Deaths
Legend at Mingo Road	4	4	0
Legend at Rivendell	61	48	13
Leisure Village Health Care Center	51	39	12
Lexington Nursing Home	17	13	2
Liberty Place	2	2	0
Lindsay Nursing & Rehab	34	31	3
Linwood Village Nursing & Retirement Apts	16	16	0
Lyndale at Edmond	2	2	0
Magnolia Creek Skilled Nursing and Therapy	44	35	9
Mangum Skilled Nursing and Therapy	66	59	6
Maple Lawn Nursing and Rehabilitation	20	16	4
Maplewood Care Center	37	32	5
Marlow Nursing & Rehab	16	15	1
McAlester Nursing & Rehab	52	47	4
McCall's Chapel School, Inc #11	2	2	0
McCall's Chapel School, Inc #13	1	1	0
McCall's Chapel School, Inc #4	1	1	0
McCall's Chapel School, Inc #7	1	1	0
McCall's Chapel School, Inc #8	1	1	0
McCall's Chapel School, Inc #9	1	1	0
McLoud Nursing Center	8	8	0
McMahon-Tomlinson Nursing Center	46	42	4

Facility	Cases	Recovered**	Deaths
Meadow Brook Residential Care	29	29	0
Meadowbrook Nursing Center	42	39	3
Meadowlake Estates	85	68	17
Meadowlakes Retirement Village	4	4	0
Medical Park West Rehabilitation	10	8	2
Medicallodes Dewey	6	6	0
Meeker Nursing Center	51	36	15
Memorial Heights Nursing Center	27	20	7
Memorial Nursing Center	28	27	1
Memory Care Center at Emerald	13	12	1
Meridian Nursing Home	17	15	1
Miami Nursing Center, LLC	87	80	7
Mid-Del Skilled Nursing and Therapy	26	24	2
Miller's Residential Care, LLC	2	2	0
Mitchell Manor	86	79	5
Monroe Manor	17	12	5
Montereau, Inc Assisted Living	26	21	5
Montereau, Inc LTC/SNF	15	13	1
Montevista Rehabilitation and Skilled Care	23	20	3
Mooreland Heritage Manor	26	24	2
Muscogee (Creek) Nation Skilled Nursing Facility	1	1	0
Muskogee Nursing Center	20	19	1

Facility	Cases	Recovered**	Deaths
New Hope Retirement & Care Center	4	4	0
Noble Health Care Center	81	76	5
North County Assisted Living	6	5	1
North County Center for Nursing and Rehabilitation	36	32	4
North Winds Living Center	2	2	0
Northhaven Place	10	9	1
Northwest Nursing Center	3	3	0
Nowata Nursing Center	7	6	1
Oak Hills Living Center	20	19	1
Oakridge Home	14	12	2
Oakridge Nursing Center	63	55	7
Okemah Care Center	27	25	2
Oklahoma Methodist Manor AL	5	4	1
Oklahoma Methodist Manor NH	37	34	3
Oklahoma Veterans Center, Ardmore Division	36	22	13
Oklahoma Veterans Center, Claremore Division	319	267	52
Oklahoma Veterans Center, Clinton Division	159	124	33
Oklahoma Veterans Center, Lawton-Ft. Sill Division	63	52	7
Oklahoma Veterans Center, Norman Division	99	71	27
Oklahoma Veterans Center, Sulfur Division	54	49	1
Oklahoma Veterans Center, Talihina Division	34	29	4
Okmulgee Terrace	3	3	0

Facility	Cases	Recovered**	Deaths
Osage Nursing Home, LLC	33	32	1
Oxford Glen at Owasso	25	20	5
Parkhill North Nursing Home	25	23	2
Parkland Manor	1	1	0
Parkview Pointe Senior Living	1	1	0
Pauls Valley Care Center	3	3	0
Perry Green Valley Nursing Center, LLC	29	27	2
Pleasant Valley Health Care Center	81	77	4
Pocola Health & Rehab	63	59	4
Ponca City Nursing and Rehabilitation	69	61	8
Prairie House Assisted Living & Memory Care	8	5	3
Prairie Pointe at Stroud	11	11	0
Primrose Retirement Community of Shawnee	12	12	0
Primrose Retirement Community of Stillwater	3	3	0
Providence House	9	8	0
Providence Place	2	2	0
Purcell Care Center, LLC	43	36	7
Quail Creek Senior Living	23	19	4
Quail Ridge Living Center, Inc (Colcord, OK)	37	35	2
Quail Ridge Senior Living	27	21	6
Quinton Manor Nursing Home	10	10	0
RT 66 Residential Care Home, LLC	7	7	0

Facility	Cases	Recovered**	Deaths
Rainbow Health Care Community: Nursing Home	84	75	9
Rainbow Terrace Care Center	1	1	0
Rambling Oaks (Norman)	29	26	3
Rambling Oaks Courtyard Assisted Living & Memory Care	9	9	0
Ranch Terrace Nursing Home	22	19	3
Ranchwood Nursing Center	42	35	2
Reliant Living Center	22	21	1
Reliant Living Center of Del City	3	3	0
River Oaks Skilled Nursing	51	43	8
Riverside Health Services LLC	18	18	0
Robert M Greer Center	1	1	0
Rolling Hills Care Center	30	17	11
Ruth Wilson Hurley Manor	75	67	8
Saint Simeons Episcopal Home	35	29	3
Sand Plum Assisted Living Community	13	12	1
Sand Springs Nursing and Rehabilitation	15	10	0
Seiling Nursing Center	7	5	2
Seminole Care and Rehabilitation Center	106	87	6
Seminole Pioneer Nursing Home	22	21	0
Seminole Place	2	2	0
Senior Star The Brook	3	3	0
Senior Suites Healthcare	17	14	3

Facility	Cases	Recovered**	Deaths
Senior Village	12	10	2
Sequoyah East Nursing Center, LLC	17	16	1
Sequoyah Manor	55	44	11
Sequoyah Pointe Living Center	27	22	4
Shady Rest Care Center	34	31	3
Shanoan Springs Nursing and Rehabilitation	62	55	7
Share Medical Center	8	7	0
Shattuck Nursing Center	7	6	0
Shawn Manor Nursing Home	2	2	0
Shawnee Care Center	39	31	7
Shawnee Colonial Estates Nursing Home	74	64	10
Sherwood Manor Nursing Home	19	14	5
Shiloh Manor	14	14	0
Sienna Extended Care & Rehab	40	37	3
Skiatook Nursing Home	47	41	6
Skyview Nursing Center	9	8	1
Sommerset Neighborhood	23	22	1
South Park East	46	42	4
South Pointe Rehabilitation and Care Center	195	167	28
Southbrook Healthcare, Inc.	36	30	6
Southern Hills Rehabilitation Center	89	77	12
Southern Oaks Care Center	55	44	11

Facility	Cases	Recovered**	Deaths
Southern Plaza Assisted Living and Memory Care	30	28	2
Southern Pointe Living Center	49	41	8
Southridge Place	1	1	0
Spanish Cove Housing Authority	27	26	0
Spiro Nursing Home, Inc.	56	55	1
St. Ann's Skilled Nursing and Therapy	89	61	28
St. Katharine Drexel Retirement Center	10	10	0
Stilwell Nursing Home, LLC	34	26	8
Stonecreek Assisted Living and Memory Care	6	4	2
Storey Oaks	48	43	5
Stroud Health Care Center South	8	8	0
Summers Healthcare, LLC	30	29	1
Sunset Estates of Purcell	87	81	6
Tamarack Retirement Center	18	16	2
Teal Creek Assisted Living & Memory Care	8	7	0
Tealridge Assisted Living	13	13	0
Temple Manor Nursing Home	47	40	7
Ten Oaks Place	12	8	4
The Arbors Assisted Living Center	11	10	1
The Brentwood Senior Living	22	20	2
The Chateau	10	8	2
The Commons	133	122	10

Facility	Cases	Recovered**	Deaths
The Commons - AL	3	3	0
The Cottage Extended Care	31	23	8
The Courtyards at Claremore Assisted Living	7	5	2
The Courtyards at Magnolia Creek	9	9	0
The Fountains at Canterbury Health Center	37	31	6
The Gardens	20	16	4
The Gardens at Rivermont	3	3	0
The Golden Rule Home	58	55	3
The Grand at Bethany Skilled Nursing and Therapy	24	24	0
The Health Center at Concordia	36	32	3
The Health Center at Concordia ALC	8	8	0
The Heaven House Elmwood	1	1	0
The Highlands at Owasso	39	28	10
The King's Daughters & Sons Nursing Home	69	64	3
The Lakes	12	11	1
The Legend at Jefferson's Garden	2	2	0
The Linden at Stonehaven Square	19	10	9
The Living Centre	36	29	7
The Lodge at Brookline	16	14	2
The Mansion at Waterford	21	17	4
The Neighborhoods at Baptist Village of Ada	7	7	0
The Neighborhoods at Baptist Village of Elk City	13	11	0

Facility	Cases	Recovered**	Deaths
The Neighborhoods at Baptist Village of Okmulgee	1	1	0
The Nova Center	1	1	0
The Oaks Healthcare Center	32	30	2
The Parke Assisted Living	17	15	2
The Regency Skilled Nursing and Therapy	26	24	2
The Renaissance of Stillwater - Assisted Living	5	5	0
The Springs Skilled Nursing and Therapy	50	40	9
The Timbers Skilled Nursing and Therapy	69	57	12
The Veraden	12	12	0
The Villages at Southern Hills	86	66	20
The Willows	1	1	0
The Wilshire Skilled Nursing and Therapy	5	5	0
The Wolfe Living Center at Summit Ridge	18	16	1
Tidwell Living Center	1	1	0
Timberwood Assisted Living & Memory Care	1	1	0
Touchmark at Coffee Creek	26	25	1
Town Village Assisted Living	2	2	0
Town of Vici Nursing Home	19	18	1
Tulsa Assisted Living and Memory Care	4	3	1
Tulsa Nursing Center	38	32	3
Tuscany Village Nursing Center	26	24	2
Tuttle Care Center	32	28	2

Facility	Cases	Recovered**	Deaths
University Park Skilled Nursing & Therapy	66	60	6
University Village	80	65	15
Van Buren House Assisted Living	2	2	0
Via Christi Village Ponca City	105	98	6
Vian Nursing & Rehab, LLC	22	20	2
Victorian Estates	8	7	1
Village Health Care Center	15	12	2
Village Lodge of Ardmore Village	11	10	1
Village at Oakwood	8	7	1
Village on the Park	46	36	8
Villagio of Oklahoma City	1	0	1
Wagoner Health & Rehab	44	41	3
Wagoner Health & Rehab Res Care	11	11	0
Walnut Grove Living Center	70	57	13
Warr Acres Nursing Center	22	19	1
Washita Valley Living Center	35	32	3
Weatherwood Assisted Living and Memory Care	10	10	0
Wellington Parke, LLC	5	5	0
West Wind Assisted Living	26	23	2
Westbrook Gardens	6	5	1
Westbrook Healthcare, Inc	19	17	2
Westhaven Nursing Home	81	78	3

Facility	Cases	Recovered**	Deaths
Westview Cottages	36	35	0
Wewoka Healthcare Center	13	13	0
Whispering Oaks	3	3	0
Wildewood Skilled Nursing and Therapy	20	13	1
Wildwood Care Center, Inc	37	34	3
Wilkins Health and Rehabilitation Community	34	34	0
Willow Creek Health Care	20	18	2
Willow Haven Nursing Home	33	27	6
Willow Park Health Care Center	73	63	10
Willow Place	5	5	0
Willowood at Mustang Assisted Living and Memory Care	7	7	0
Wilson Nursing Center	48	40	8
Windridge Nursing and Rehabilitation Center	32	28	4
Windsor Hills Nursing Center	8	7	1
Woodland Park Home, Inc	6	5	1
Woodlands Skilled Nursing & Therapy	3	3	0
Woodview Home, Inc.	21	21	0
Woodward Skilled Nursing and Therapy	33	29	4
York Manor Nursing Home	43	41	2
Zarrow Pointe	20	17	3
<i>Total</i>	<i>14,597</i>	<i>12,670</i>	<i>1,778</i>

\*\* Recovered case: is not deceased and 14 days after symptom onset/specimen collection. Please note that the definition for recovered was changed starting May 4, 2021 due to incomplete data on hospitalizations which may result in an inaccurate estimation of the active cases.

## **ACKNOWLEDGEMENT**

The weekly report is made by possible through the efforts of county and city public health and healthcare professionals.

---

## **NOTES**

Every effort is made to ensure accuracy and the data is up-to-date for the time period reported.

---

## **DISCLAIMER**

The purpose of publishing aggregated statistical COVID-19 data through the OSDH Dashboard, the Executive Order Report, and the Weekly Epidemiology and Surveillance Report is to support the needs of the general public in receiving important and necessary information regarding the state of the health and safety of the citizens of Oklahoma. These resources may be used only for statistical purposes and may not be used in any way that would determine the identity of any reported cases.