



## Applications

### Surveying

- Topographic and planimetric maps
- Elevation and terrain models
- Orthorectified imagery

### Mining

- Pit and leach pad volume measurements
- Disturbance and reclamation monitoring
- Mine claim base maps
- Site documentation for regulatory permitting

### Monitoring & Inspection

- Geological surface monitoring
- Infrastructure and facility inspection
- Change detection over time
- Removing personnel from dangerous situations

### GIS

- Imagery and elevation layers for databases
- Imagery classification and analysis



### CONTACT US

**Kevin Almeter, PLS - Survey & Mapping Manager**

**Phone:** (775) 828-5687

**Email:** kalmeter@woodrogers.com

### CONTACT US

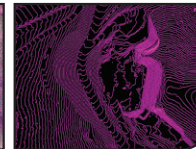
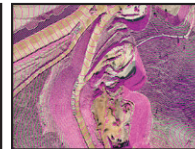
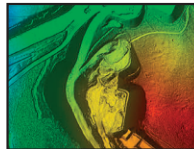
**Michael Detwiler, PLS - Photogrammetrist**

**Phone:** (775) 828-5688

**Email:** mdetwiler@woodrogers.com

Wood Rodgers provides a full range of aerial mapping services, utilizing photogrammetry and LiDAR sensors from both manned aircraft and unmanned aerial systems (UAS). We have the ability to capture oblique imagery and video, model surfaces, produce cross sections, compute volumes, surveying vertical structures, monitor mining and construction sites, and detect change over time. Our licensed Remote UAS pilots ensure data is collected in the safest way and ensuring regulatory procedures. We use modern digital mapping techniques and workflows to help reduce delivery time and get your project moving through, faster. Our licensed land surveyors and photogrammetrists will ensure your data meets the accuracy standards you need for your project each and every time.

## CHALLENGE. INNOVATE. CREATE.



**WOOD RODGERS ADVANCED TECHNOLOGY**

**PHOTOGRAMMETRY & AERIAL MAPPING**